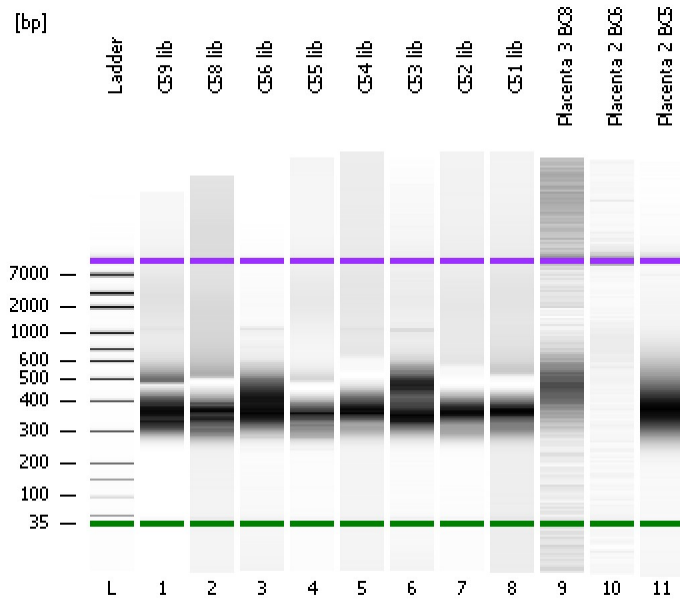


Assay Class: High Sensitivity DNA Assay
Data Path: C:\...ents and Settings\Bioanalyzer\2012-02-17\2012-02-17_002.xad

Created: 2/17/2012 10:14:54 AM
Modified: 2/17/2012 11:02:06 AM

Electrophoresis File Run Summary



Instrument Information:

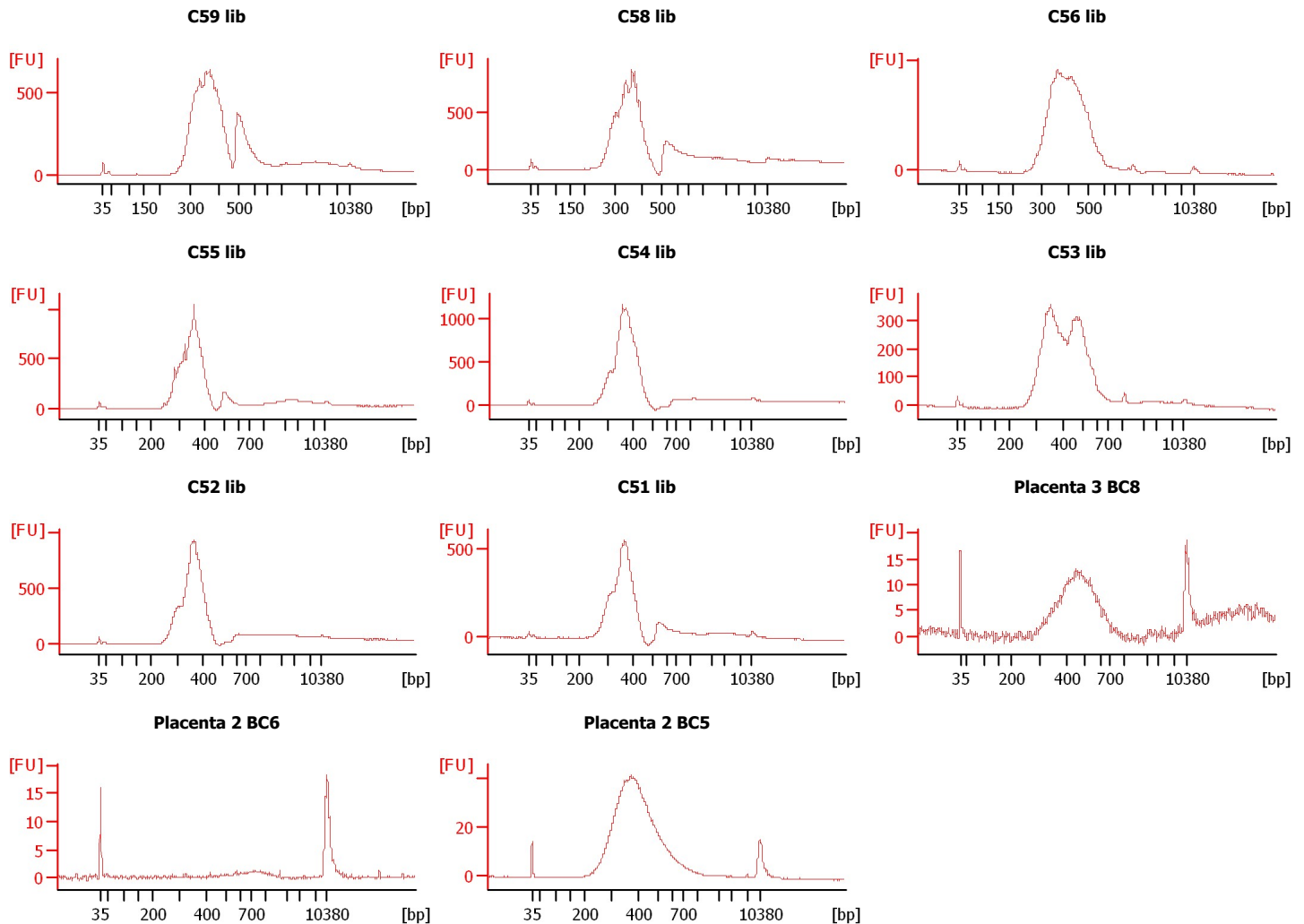
Instrument Name: DE13701086 Firmware: C.01.069
Serial#: DE13701086 Type: G2938B

Assay Information:

Assay Origin Path: C:\Program Files\Agilent\2100 bioanalyzer\2100 expert\assays\dsDNA\High Sensitivity DNA.xsy
Assay Class: High Sensitivity DNA Assay
Version: 1.03
Assay Comments: Copyright © 2003-2010 Agilent Technologies

Chip Information:

Chip Lot #: Reagent Kit Lot #: Chip Comments:



Assay Class: High Sensitivity DNA Assay
Data Path: C:\...ents and Settings\Bioanalyzer\2012-02-17\2012-02-17_002.xad

Created: 2/17/2012 10:14:54 AM
Modified: 2/17/2012 11:02:06 AM

Electrophoresis File Run Summary (Chip Summary)

Sample Name	Sample Comment	Rest. Digest	Status	Observation	Result Label	Result Color
C59 lib		<input type="checkbox"/>	✓			
C58 lib		<input type="checkbox"/>	✓			
C56 lib		<input type="checkbox"/>	✓			
C55 lib		<input type="checkbox"/>	✓			
C54 lib		<input type="checkbox"/>	✓			
C53 lib		<input type="checkbox"/>	✓			
C52 lib		<input type="checkbox"/>	✓			
C51 lib		<input type="checkbox"/>	✓			
Placenta 3 BC8		<input type="checkbox"/>	✓			
Placenta 2 BC6		<input type="checkbox"/>	✓			
Placenta 2 BC5		<input type="checkbox"/>	✓			
Ladder		<input type="checkbox"/>	✓			

Chip Lot #

Reagent Kit Lot #

Chip Comments :

Assay Class: High Sensitivity DNA Assay
Data Path: C:\...ents and Settings\Bioanalyzer\2012-02-17\2012-02-17_002.xad

Created: 2/17/2012 10:14:54 AM
Modified: 2/17/2012 11:02:06 AM

Electrophoresis Assay Details

General Analysis Settings

Number of Available Sample and Ladder Wells (Max.) : 12
Minimum Visible Range [s] : 32
Maximum Visible Range [s] : 138
Start Analysis Time Range [s] : 33
End Analysis Time Range [s] : 137.5
Ladder Concentration [pg/μl] : 1950
Uses Standard Area for Ladder Fragments
Lower Marker Concentration [pg/μl] : 125
Upper Marker Concentration [pg/μl] : 75
Used Upper Marker for Quantitation
Standard Curve Fit is Point to Point
Show Data Aligned to Lower and Upper Marker

Integrator Settings

Integration Start Time [s] : 33.05
Integration End Time [s] : 137
Slope Threshold : 0.8
Height Threshold [FU] : 5
Area Threshold : 0.1
Width Threshold [s] : 0.6
Baseline Plateau [s] : 0.5

Filter Settings

Filter Width [s] : 0.5
Polynomial Order : 4

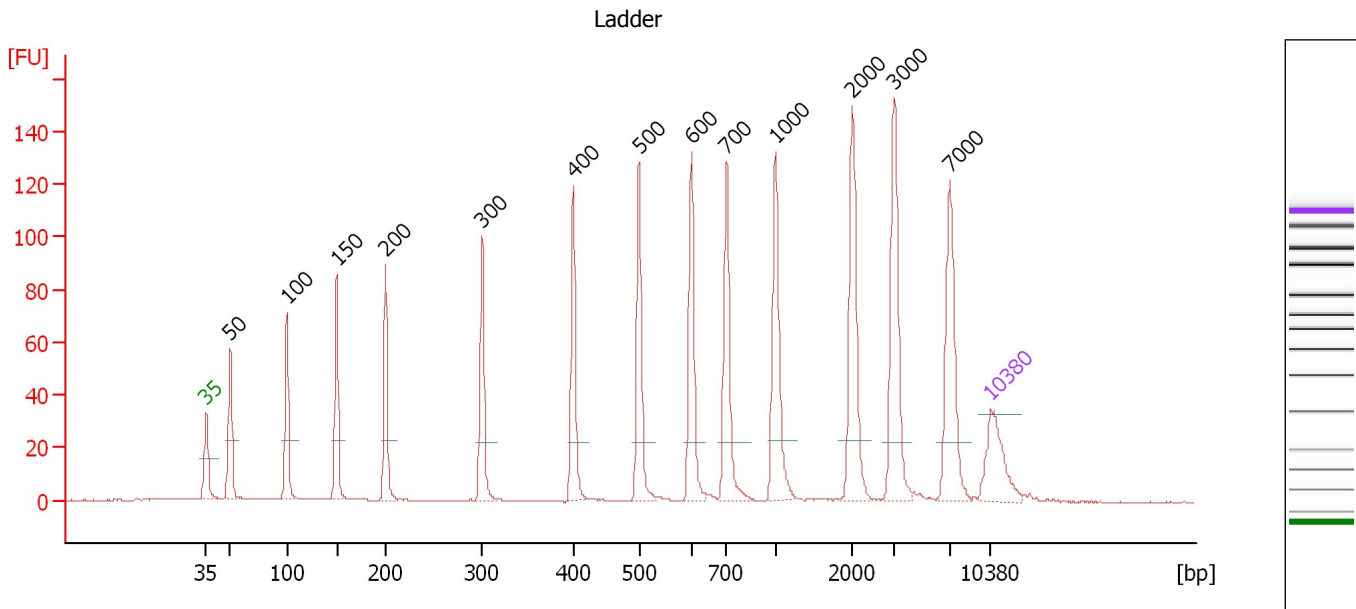
Ladder

Ladder Peak	Size	Area
1	35	160
2	50	210
3	100	208
4	150	221
5	200	242
6	300	270
7	400	305
8	500	306
9	600	336
10	700	321
11	1000	366
12	2000	413
13	3000	411
14	7000	400
15	10380	214

Assay Class: High Sensitivity DNA Assay
 Data Path: C:\...ents and Settings\Bioanalyzer\2012-02-17\2012-02-17_002.xad

Created: 2/17/2012 10:14:54 AM
 Modified: 2/17/2012 11:02:06 AM

Electropherogram Summary



Overall Results for Ladder

Noise: 0.1

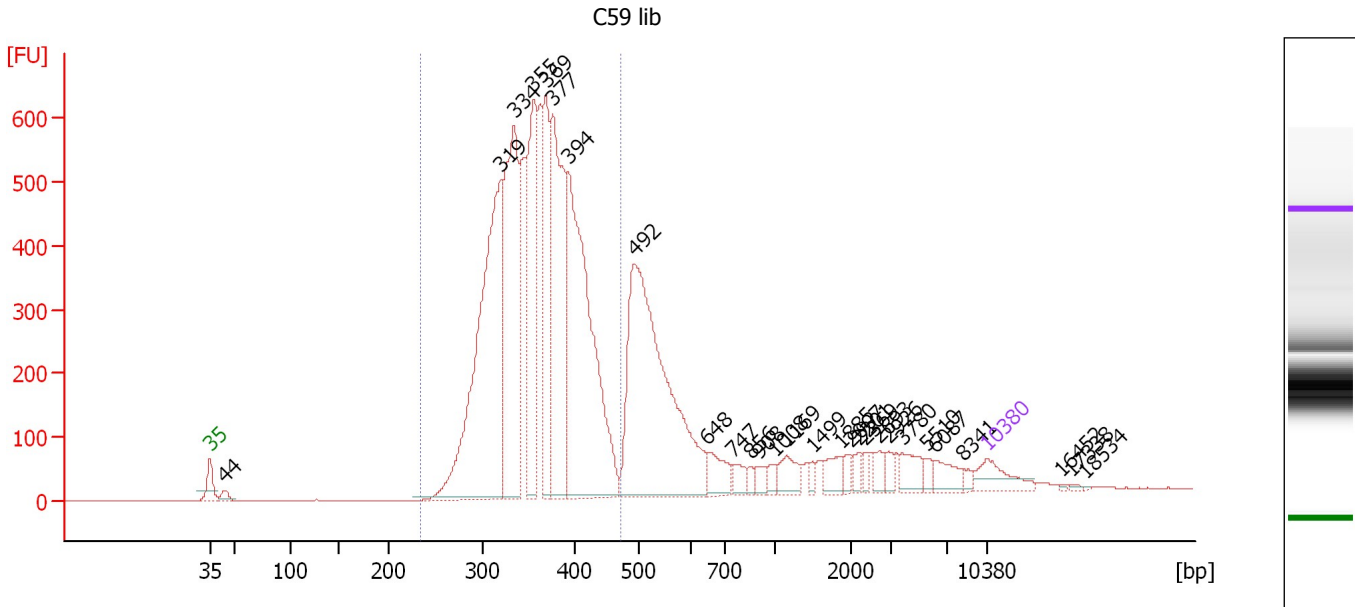
Peak table for Ladder

Peak	Size [bp]	Conc. [pg/μl]	Molarity [pmol/l]	Observations
1	35	125.00	5,411.3	Lower Marker
2	50	150.00	4,545.5	Ladder Peak
3	100	150.00	2,272.7	Ladder Peak
4	150	150.00	1,515.2	Ladder Peak
5	200	150.00	1,136.4	Ladder Peak
6	300	150.00	757.6	Ladder Peak
7	400	150.00	568.2	Ladder Peak
8	500	150.00	454.5	Ladder Peak
9	600	150.00	378.8	Ladder Peak
10	700	150.00	324.7	Ladder Peak
11	1,000	150.00	227.3	Ladder Peak
12	2,000	150.00	113.6	Ladder Peak
13	3,000	150.00	75.8	Ladder Peak
14	7,000	150.00	32.5	Ladder Peak
15	10,380	75.00	10.9	Upper Marker

Assay Class: High Sensitivity DNA Assay
 Data Path: C:\...ents and Settings\Bioanalyzer\2012-02-17\2012-02-17_002.xad

Created: 2/17/2012 10:14:54 AM
 Modified: 2/17/2012 11:02:06 AM

Electropherogram Summary Continued ...



Overall Results for sample 1 : C59 lib

Number of peaks found: 28 Corr. Area 1: 7,788.1
 Noise: 0.1

Peak table for sample 1 : C59 lib

Peak	Size [bp]	Conc. [pg/μl]	Molarity [pmol/l]	Observations
1	35	125.00	5,411.3	Lower Marker
2	44	33.71	1,149.8	
3	319	1,442.75	6,855.8	
4	334	922.18	4,188.3	
5	355	624.22	2,660.8	
6	369	422.34	1,734.0	
7	377	792.71	3,188.3	
8	394	1,245.33	4,791.1	
9	492	1,330.14	4,093.1	
10	648	99.21	231.8	
11	747	46.96	95.3	
12	856	19.00	33.6	
13	908	30.19	50.4	
14	1,008	28.76	43.2	
15	1,169	68.47	88.7	
16	1,499	18.32	18.5	
17	1,885	55.00	44.2	
18	2,007	24.46	18.5	
19	2,201	26.74	18.4	
20	2,369	20.81	13.3	
21	2,693	33.89	19.1	
22	2,926	26.63	13.8	
23	3,780	61.57	24.7	
24	5,510	21.85	6.0	
25	6,087	57.89	14.4	
26	8,341	17.48	3.2	


Assay Class: High Sensitivity DNA Assay
Data Path: C:\...ents and Settings\Bioanalyzer\2012-02-17\2012-02-17_002.xad

Created: 2/17/2012 10:14:54 AM
Modified: 2/17/2012 11:02:06 AM

Electropherogram Summary Continued ...**... Peak table for sample 1 : C59 lib**

Peak	Size [bp]	Conc. [pg/ μ l]	Molarity [pmol/l]	Observations
27	10,380	75.00	10.9	Upper Marker
28	16,452	0.00	0.0	
29	17,338	0.00	0.0	
30	18,534	0.00	0.0	

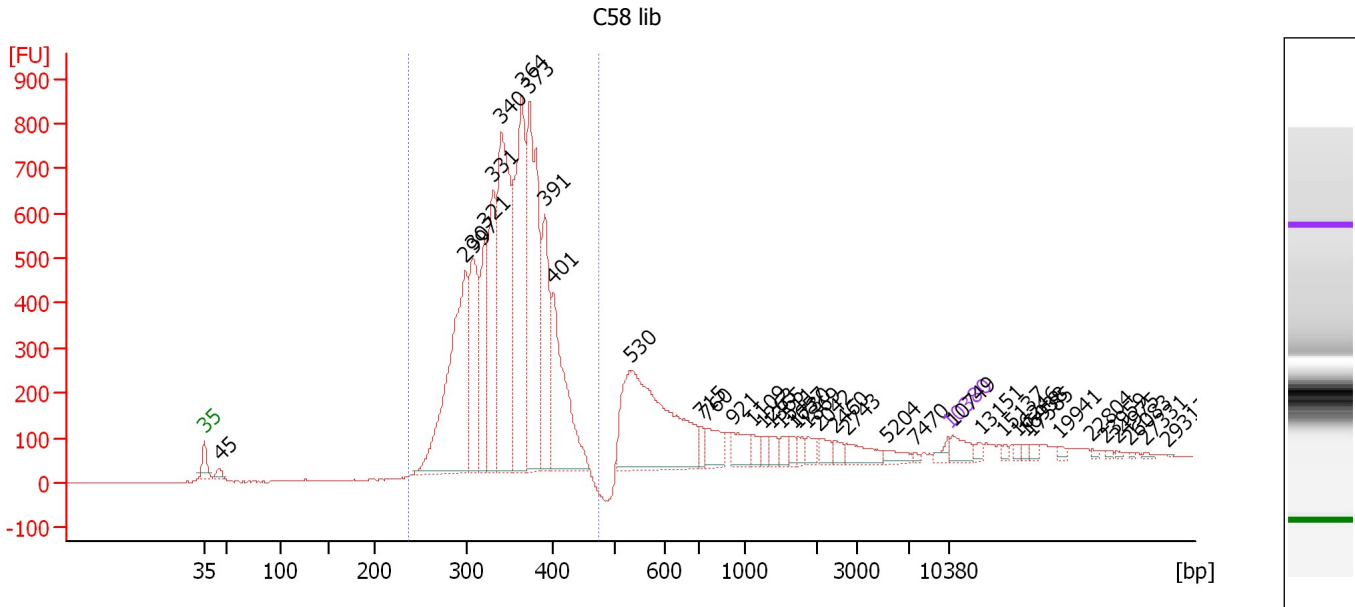
Region table for sample 1 : C59 lib

From [bp]	Molarity [pmol/l]	Average Size [bp]	Conc. [pg/ μ l]	To [bp]	Corr. Area	% of Total	Size distribution in CV [%]	Color
234	25,837.4	358	6,014.77	471	7,788.1	72	11.7	

Assay Class: High Sensitivity DNA Assay
 Data Path: C:\...ents and Settings\Bioanalyzer\2012-02-17\2012-02-17_002.xad

Created: 2/17/2012 10:14:54 AM
 Modified: 2/17/2012 11:02:06 AM

Electropherogram Summary Continued ...



Overall Results for sample 2 : C58 lib

Number of peaks found: 39 Corr. Area 1: 8,635.3
 Noise: 1.5

Peak table for sample 2 : C58 lib


Peak	Size [bp]	Conc. [pg/μl]	Molarity [pmol/l]	Observations
1	35	125.00	5,411.3	Lower Marker
2	45	117.10	3,927.7	
3	299	3,549.85	17,974.2	
4	307	1,652.01	8,148.1	
5	321	1,283.29	6,050.8	
6	331	1,697.76	7,767.0	
7	340	3,454.79	15,376.7	
8	364	3,017.68	12,546.7	
9	373	3,053.18	12,401.2	
10	391	1,409.60	5,464.1	
11	401	1,754.01	6,627.4	
12	530	2,957.47	8,449.1	
13	715	150.23	318.3	
14	760	349.79	697.6	
15	921	267.25	439.7	
16	1,109	119.81	163.6	
17	1,263	101.47	121.7	
18	1,365	107.92	119.8	
19	1,511	103.06	103.3	
20	1,657	77.65	71.0	
21	1,730	80.56	70.5	
22	1,869	111.74	90.6	
23	2,042	129.66	96.2	
24	2,460	84.46	52.0	
25	2,743	222.09	122.7	
26	5,204	103.64	30.2	

Assay Class: High Sensitivity DNA Assay
 Data Path: C:\...ents and Settings\Bioanalyzer\2012-02-17\2012-02-17_002.xad


Created: 2/17/2012 10:14:54 AM
 Modified: 2/17/2012 11:02:06 AM

Electropherogram Summary Continued ...

... Peak table for sample 2 : C58 lib

Peak	Size [bp]	Conc. [pg/μl]	Molarity [pmol/l]	Observations
27	7,470	22.69	4.6	
28	 10,380	75.00	10.9	Upper Marker
29	10,749	0.00	0.0	
30	13,151	0.00	0.0	
31	15,137	0.00	0.0	
32	16,246	0.00	0.0	
33	16,939	0.00	0.0	
34	17,585	0.00	0.0	
35	19,941	0.00	0.0	
36	22,804	0.00	0.0	
37	23,959	0.00	0.0	
38	24,975	0.00	0.0	
39	26,083	0.00	0.0	
40	27,331	0.00	0.0	
41	29,317	0.00	0.0	

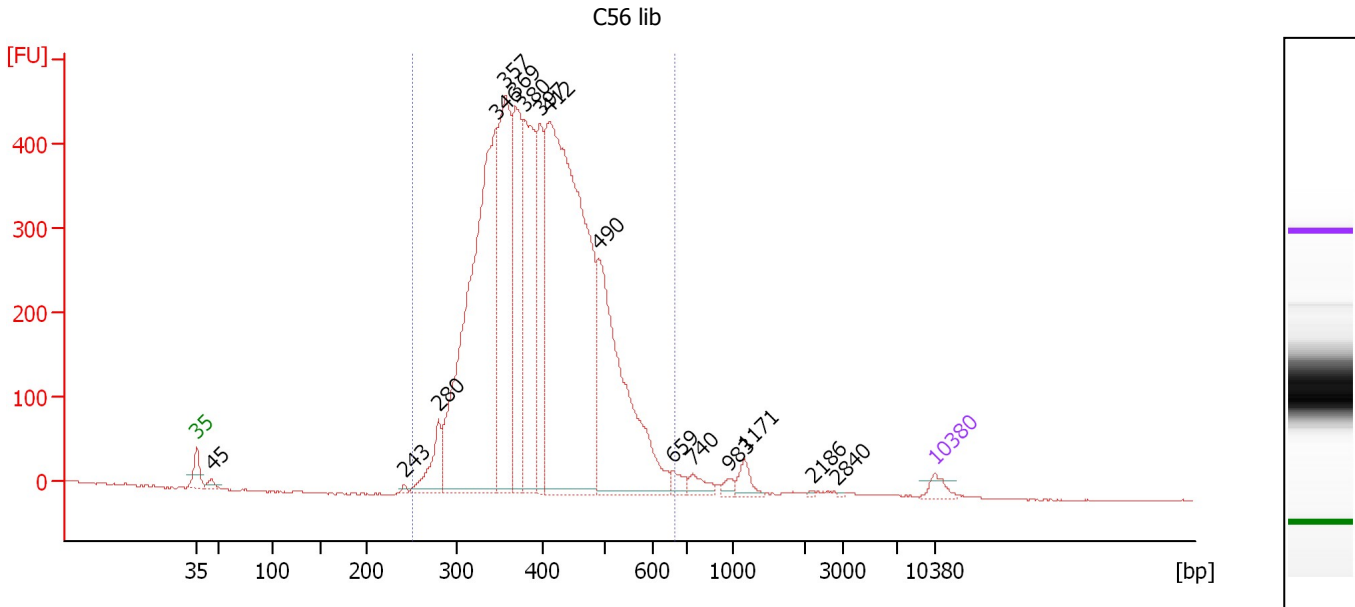
Region table for sample 2 : C58 lib

From [bp]	Molarity [pmol/l]	Average Size [bp]	Conc. [pg/μl]	To [bp]	Corr. Area	% of Total	Size distribution in CV [%]	Color
237	92,283.8	348	20,910.38	473	8,635.3	74	11.4	

Assay Class: High Sensitivity DNA Assay
 Data Path: C:\...ents and Settings\Bioanalyzer\2012-02-17\2012-02-17_002.xad

Created: 2/17/2012 10:14:54 AM
 Modified: 2/17/2012 11:02:06 AM

Electropherogram Summary Continued ...



Overall Results for sample 3 : C56 lib

Number of peaks found: 16 Corr. Area 1: 7,810.3
 Noise: 0.6

Peak table for sample 3 : C56 lib

Peak	Size [bp]	Conc. [pg/μl]	Molarity [pmol/l]	Observations
1	35	125.00	5,411.3	Lower Marker
2	45	72.40	2,442.0	
3	243	18.34	114.4	
4	280	395.90	2,143.8	
5	346	4,575.42	20,014.3	
6	357	2,163.30	9,182.8	
7	369	1,497.75	6,154.1	
8	380	1,690.66	6,742.2	
9	397	1,012.05	3,859.2	
10	412	5,633.41	20,724.3	
11	490	2,458.34	7,594.0	
12	659	97.40	223.9	
13	740	119.19	243.9	
14	983	52.74	81.3	
15	1,171	113.06	146.3	
16	2,186	8.41	5.8	
17	2,840	6.99	3.7	
18	10,380	75.00	10.9	Upper Marker

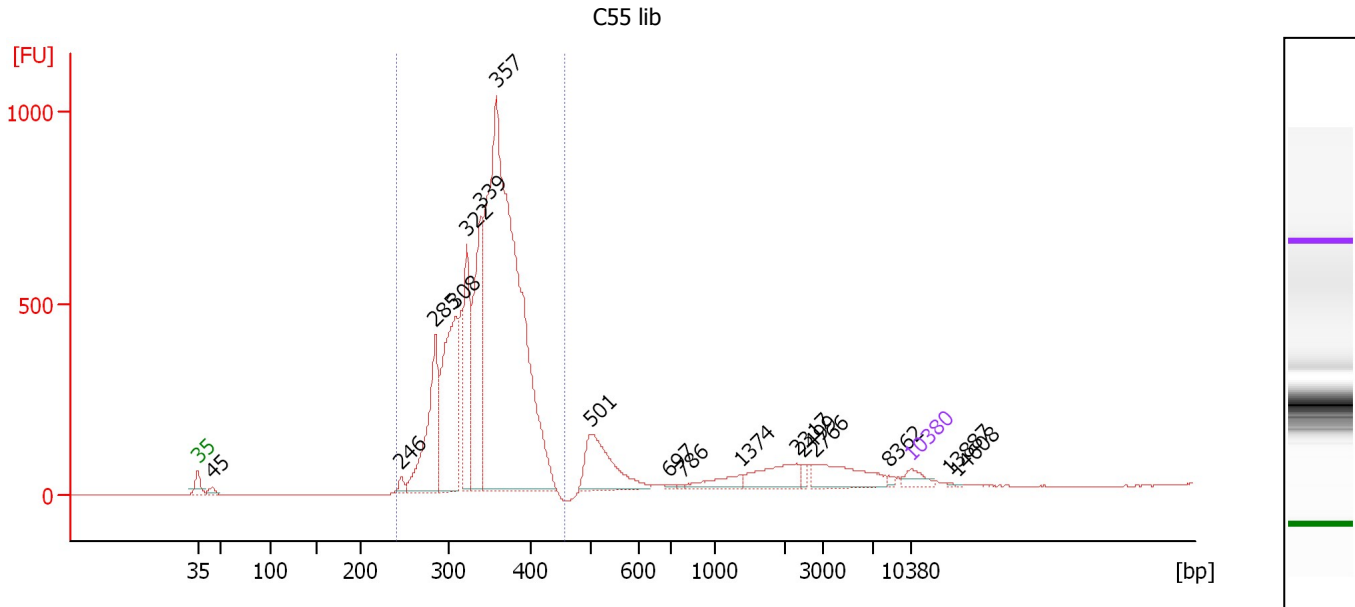
Region table for sample 3 : C56 lib

From [bp]	Molarity [pmol/l]	Average Size [bp]	Conc. [pg/μl]	To [bp]	Corr. Area	% of Total	Size distribution in CV [%]	Color
251	74,233.4	405	19,081.96	665	7,810.3	98	17.9	Blue

Assay Class: High Sensitivity DNA Assay
 Data Path: C:\...ents and Settings\Bioanalyzer\2012-02-17\2012-02-17_002.xad

Created: 2/17/2012 10:14:54 AM
 Modified: 2/17/2012 11:02:06 AM

Electropherogram Summary Continued ...



Overall Results for sample 4 : C55 lib

Number of peaks found: 17 Corr. Area 1: 8,440.1
 Noise: 0.9

Peak table for sample 4 : C55 lib

Peak	Size [bp]	Conc. [pg/μl]	Molarity [pmol/l]	Observations
1	35	125.00	5,411.3	Lower Marker
2	45	52.43	1,771.3	
3	246	56.84	350.1	
4	285	1,018.18	5,418.7	
5	308	1,357.93	6,677.4	
6	322	857.63	4,033.0	
7	339	1,212.36	5,421.1	
8	357	5,960.97	25,270.5	
9	501	644.11	1,947.3	
10	697	14.59	31.7	
11	786	11.80	22.7	
12	1,374	128.50	141.8	
13	2,317	245.03	160.3	
14	2,499	34.90	21.2	
15	2,766	288.29	157.9	
16	8,362	18.92	3.4	
17	10,380	75.00	10.9	Upper Marker
18	13,887	0.00	0.0	
19	14,608	0.00	0.0	

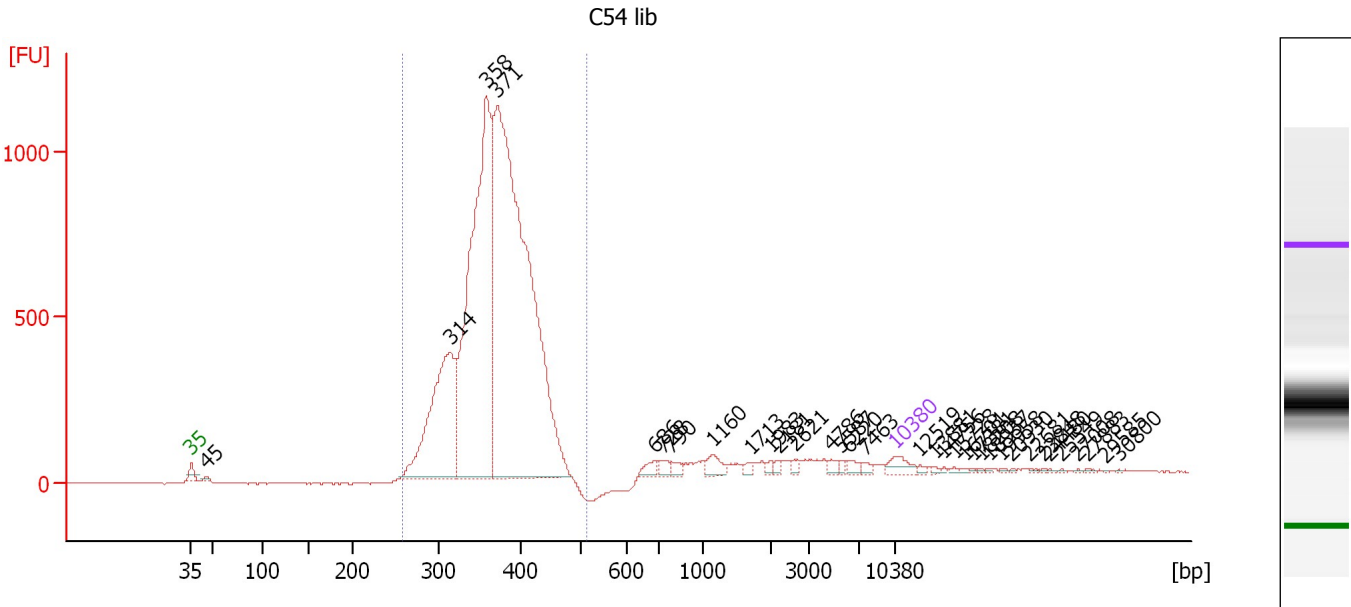
Region table for sample 4 : C55 lib

From [bp]	Molarity [pmol/l]	Average Size [bp]	Conc. [pg/μl]	To [bp]	Corr. Area	% of Total	Size distribution in CV [%]	Color
241	47,483.4	345	10,677.14	454	8,440.1	85	10.7	Blue

Assay Class: High Sensitivity DNA Assay
 Data Path: C:\...ents and Settings\Bioanalyzer\2012-02-17\2012-02-17_002.xad

Created: 2/17/2012 10:14:54 AM
 Modified: 2/17/2012 11:02:06 AM

Electropherogram Summary Continued ...



Overall Results for sample 5 : C54 lib

Number of peaks found: 34 Corr. Area 1: 10,997.9
 Noise: 2.1

Peak table for sample 5 : C54 lib

Peak	Size [bp]	Conc. [pg/μl]	Molarity [pmol/l]	Observations
1	35	125.00	5,411.3	Lower Marker
2	45	20.90	698.5	
3	314	1,658.73	8,008.7	
4	358	3,691.59	15,630.1	
5	371	5,909.91	24,106.1	
6	686	62.97	139.0	
7	728	52.59	109.4	
8	790	44.33	85.1	
9	1,160	83.78	109.5	
10	1,713	26.79	23.7	
11	1,983	22.66	17.3	
12	2,181	23.62	16.4	
13	2,621	26.04	15.0	
14	4,786	32.38	10.3	
15	5,587	20.51	5.6	
16	6,220	39.58	9.6	
17	7,463	23.72	4.8	
18	10,380	75.00	10.9	Upper Marker
19	12,519	0.00	0.0	
20	13,881	0.00	0.0	
21	14,756	0.00	0.0	
22	15,728	0.00	0.0	
23	16,701	0.00	0.0	
24	17,381	0.00	0.0	
25	18,208	0.00	0.0	
26	18,937	0.00	0.0	

Assay Class: High Sensitivity DNA Assay
 Data Path: C:\...ents and Settings\Bioanalyzer\2012-02-17\2012-02-17_002.xad


Created: 2/17/2012 10:14:54 AM
 Modified: 2/17/2012 11:02:06 AM

Electropherogram Summary Continued ...

... Peak table for sample 5 : C54 lib

Peak	Size [bp]	Conc. [pg/μl]	Molarity [pmol/l]	Observations
27	19,958	0.00	0.0	
28	20,930	0.00	0.0	
29	22,681	0.00	0.0	
30	23,848	0.00	0.0	
31	24,480	0.00	0.0	
32	25,549	0.00	0.0	
33	27,008	0.00	0.0	
34	27,883	0.00	0.0	
35	29,585	0.00	0.0	
36	30,800	0.00	0.0	

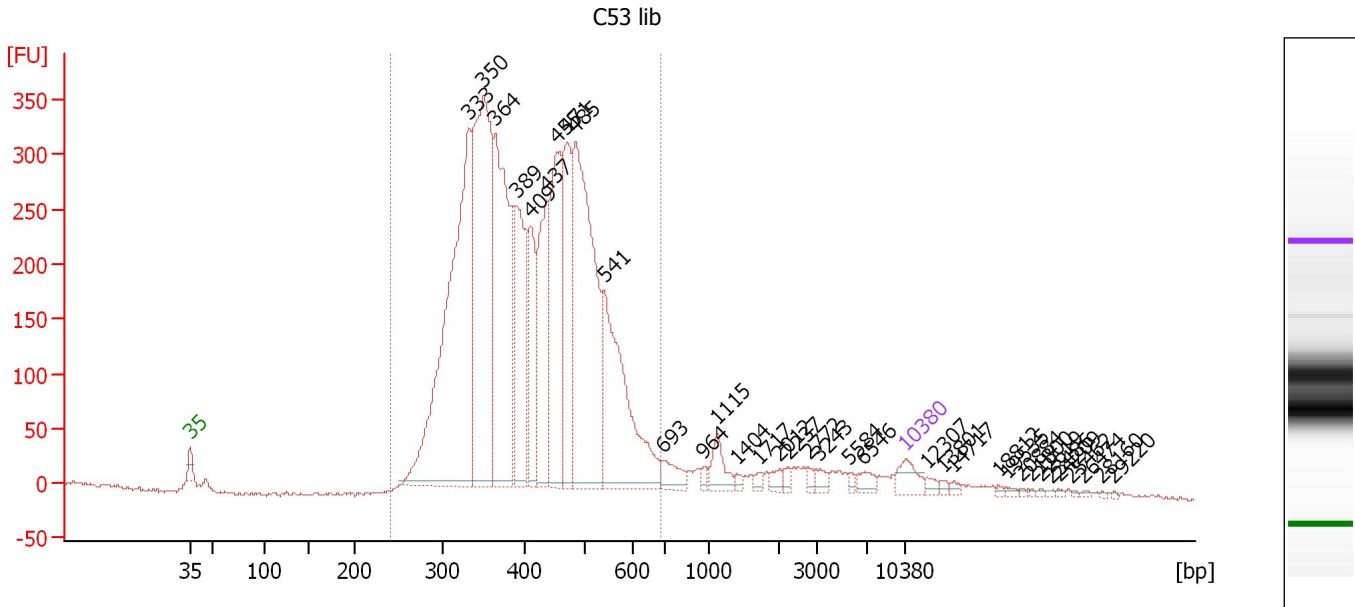
Region table for sample 5 : C54 lib

From [bp]	Molarity [pmol/l]	Average Size [bp]	Conc. [pg/μl]	To [bp]	Corr. Area	% of Total	Size distribution in CV [%]	Color
258	46,566.7	369	11,169.47	516	10,997.9	90	11.0	

Assay Class: High Sensitivity DNA Assay
 Data Path: C:\...ents and Settings\Bioanalyzer\2012-02-17\2012-02-17_002.xad

Created: 2/17/2012 10:14:54 AM
 Modified: 2/17/2012 11:02:06 AM

Electropherogram Summary Continued ...



Overall Results for sample 6 : C53 lib

Number of peaks found: 35 Corr. Area 1: 6,306.3
 Noise: 1.3

Peak table for sample 6 : C53 lib

Peak	Size [bp]	Conc. [pg/μl]	Molarity [pmol/l]	Observations
1	35	125.00	5,411.3	Lower Marker
2	333	2,278.19	10,372.0	
3	350	1,825.48	7,899.5	
4	364	1,345.72	5,597.6	
5	389	683.97	2,662.1	
6	409	432.39	1,601.0	
7	437	669.84	2,323.1	
8	455	795.28	2,649.9	
9	471	659.38	2,122.1	
10	485	1,549.08	4,838.7	
11	541	974.42	2,730.9	
12	693	102.49	224.0	
13	964	22.22	34.9	
14	1,115	108.02	146.8	
15	1,404	19.70	21.3	
16	1,717	22.47	19.8	
17	2,012	28.58	21.5	
18	2,237	20.99	14.2	
19	2,772	18.27	10.0	
20	3,243	33.34	15.6	
21	5,584	16.12	4.4	
22	6,546	44.67	10.3	
23	10,380	75.00	10.9	Upper Marker
24	12,307	0.00	0.0	
25	13,801	0.00	0.0	
26	14,717	0.00	0.0	

Assay Class: High Sensitivity DNA Assay
 Data Path: C:\...ents and Settings\Bioanalyzer\2012-02-17\2012-02-17_002.xad


Created: 2/17/2012 10:14:54 AM
 Modified: 2/17/2012 11:02:06 AM

Electropherogram Summary Continued ...

... Peak table for sample 6 : C53 lib

Peak	Size [bp]	Conc. [pg/μl]	Molarity [pmol/l]	Observations
27	18,812	0.00	0.0	
28	19,535	0.00	0.0	
29	20,884	0.00	0.0	
30	21,800	0.00	0.0	
31	22,619	0.00	0.0	
32	23,486	0.00	0.0	
33	24,209	0.00	0.0	
34	25,462	0.00	0.0	
35	26,474	0.00	0.0	
36	28,160	0.00	0.0	
37	29,220	0.00	0.0	

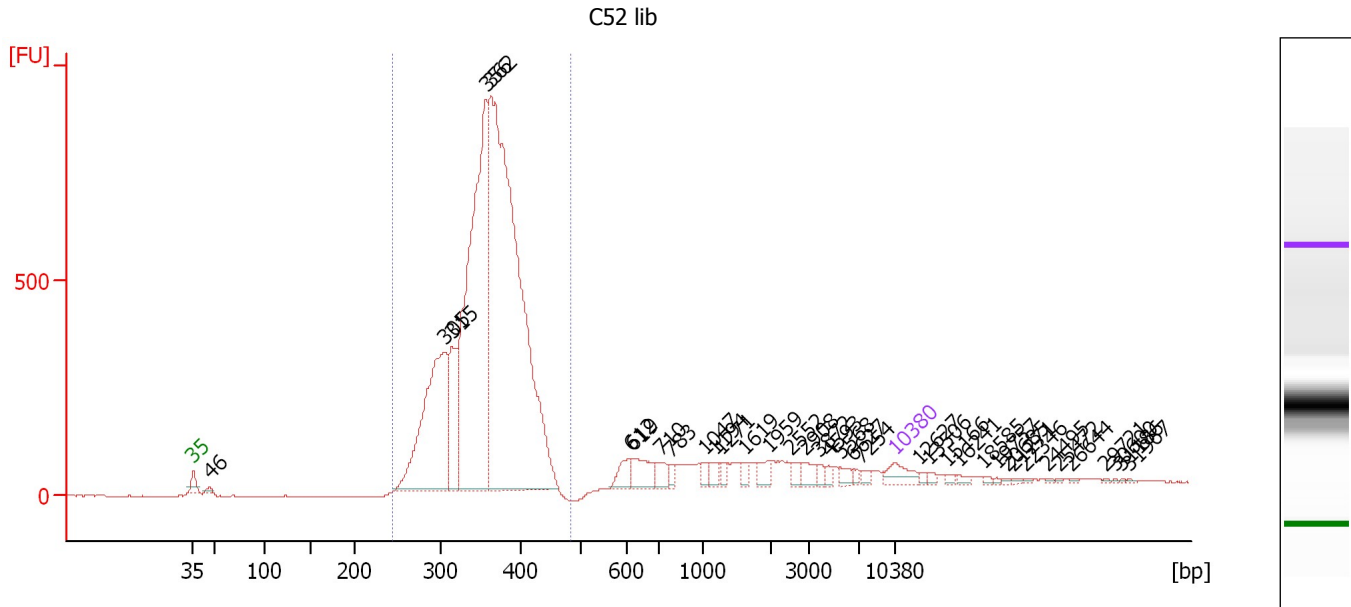
Region table for sample 6 : C53 lib

From [bp]	Molarity [pmol/l]	Average Size [bp]	Conc. [pg/μl]	To [bp]	Corr. Area	% of Total	Size distribution in CV [%]	Color
242	43,984.0	418	11,495.43	690	6,306.3	91	20.4	

Assay Class: High Sensitivity DNA Assay
 Data Path: C:\...ents and Settings\Bioanalyzer\2012-02-17\2012-02-17_002.xad

Created: 2/17/2012 10:14:54 AM
 Modified: 2/17/2012 11:02:06 AM

Electropherogram Summary Continued ...



Overall Results for sample 7 : C52 lib

Number of peaks found: 37 Corr. Area 1: 8,452.8
 Noise: 0.9

Peak table for sample 7 : C52 lib

Peak	Size [bp]	Conc. [pg/μl]	Molarity [pmol/l]	Observations
1	35	125.00	5,411.3	Lower Marker
2	46	25.70	837.4	
3	305	1,243.94	6,169.7	
4	315	420.54	2,025.4	
5	356	2,314.44	9,843.8	
6	362	3,890.38	16,278.9	
7	612	89.63	221.9	
8	619	126.08	308.7	
9	710	70.90	151.3	
10	783	32.11	62.2	
11	1,047	28.75	41.6	
12	1,194	38.76	49.2	
13	1,271	29.42	35.1	
14	1,619	29.69	27.8	
15	1,959	47.99	37.1	
16	2,552	37.51	22.3	
17	2,908	47.72	24.9	
18	3,872	22.96	9.0	
19	4,593	21.71	7.2	
20	5,568	34.14	9.3	
21	6,627	15.13	3.5	
22	7,254	20.71	4.3	
23	10,380	75.00	10.9	Upper Marker
24	12,627	0.00	0.0	
25	13,506	0.00	0.0	
26	15,166	0.00	0.0	

Assay Class: High Sensitivity DNA Assay
 Data Path: C:\...ents and Settings\Bioanalyzer\2012-02-17\2012-02-17_002.xad


Created: 2/17/2012 10:14:54 AM
 Modified: 2/17/2012 11:02:06 AM

Electropherogram Summary Continued ...

... Peak table for sample 7 : C52 lib

Peak	Size [bp]	Conc. [pg/μl]	Molarity [pmol/l]	Observations
27	16,241	0.00	0.0	
28	18,585	0.00	0.0	
29	19,757	0.00	0.0	
30	20,685	0.00	0.0	
31	21,271	0.00	0.0	
32	22,346	0.00	0.0	
33	24,495	0.00	0.0	
34	25,472	0.00	0.0	
35	26,644	0.00	0.0	
36	29,721	0.00	0.0	
37	30,600	0.00	0.0	
38	31,186	0.00	0.0	
39	31,967	0.00	0.0	

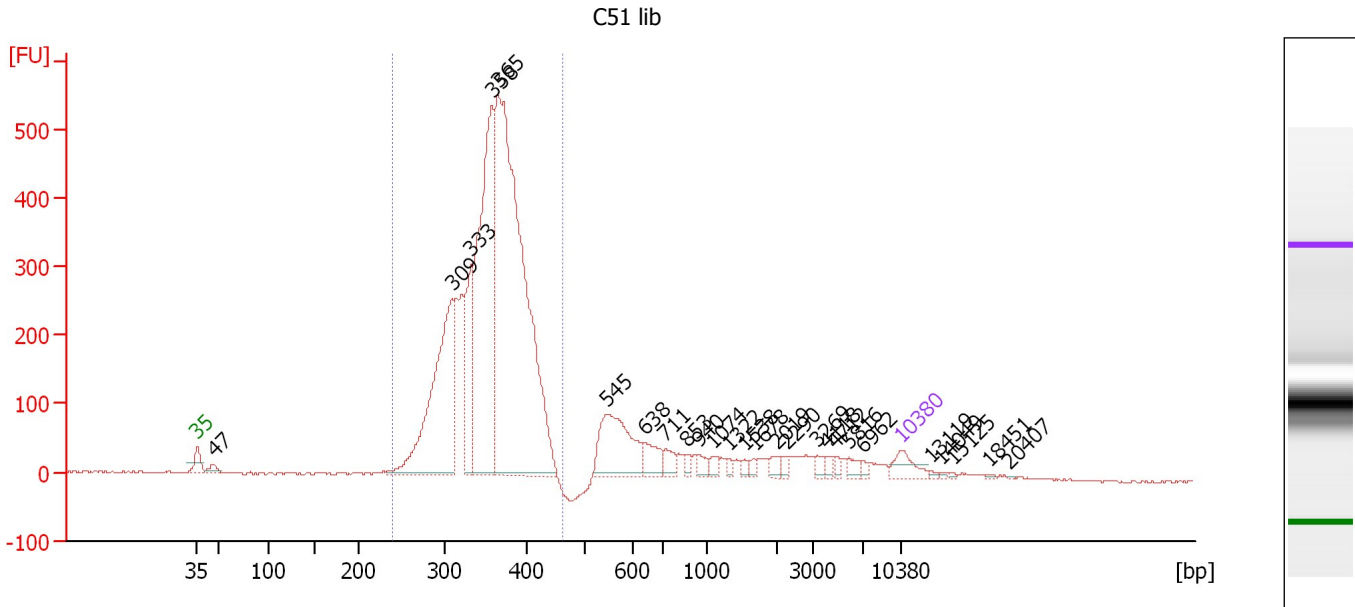
Region table for sample 7 : C52 lib

From [bp]	Molarity [pmol/l]	Average Size [bp]	Conc. [pg/μl]	To [bp]	Corr. Area	% of Total	Size distribution in CV [%]	Color
246	33,759.4	357	7,829.88	482	8,452.8	83	11.0	

Assay Class: High Sensitivity DNA Assay
 Data Path: C:\...ents and Settings\Bioanalyzer\2012-02-17\2012-02-17_002.xad

Created: 2/17/2012 10:14:54 AM
 Modified: 2/17/2012 11:02:06 AM

Electropherogram Summary Continued ...



Overall Results for sample 8 : C51 lib

Number of peaks found: 26 Corr. Area 1: 5,105.8
 Noise: 1.4

Peak table for sample 8 : C51 lib

Peak	Size [bp]	Conc. [pg/μl]	Molarity [pmol/l]	Observations
1	35	125.00	5,411.3	Lower Marker
2	47	46.79	1,524.0	
3	309	1,162.21	5,694.9	
4	333	435.75	1,984.6	
5	358	1,537.73	6,506.5	
6	365	3,012.43	12,496.2	
7	545	442.85	1,231.9	
8	638	111.37	264.6	
9	711	58.83	125.3	
10	853	25.09	44.6	
11	940	43.31	69.8	
12	1,074	29.92	42.2	
13	1,322	17.74	20.3	
14	1,538	16.66	16.4	
15	1,678	17.85	16.1	
16	2,019	28.98	21.7	
17	2,290	24.05	15.9	
18	3,269	26.89	12.5	
19	4,118	20.97	7.7	
20	4,712	18.68	6.0	
21	5,816	32.16	8.4	
22	6,962	14.83	3.2	
23	10,380	75.00	10.9	Upper Marker
24	13,119	0.00	0.0	
25	14,049	0.00	0.0	
26	15,125	0.00	0.0	


Assay Class: High Sensitivity DNA Assay
Data Path: C:\...ents and Settings\Bioanalyzer\2012-02-17\2012-02-17_002.xad

Created: 2/17/2012 10:14:54 AM
Modified: 2/17/2012 11:02:06 AM

Electropherogram Summary Continued ...**... Peak table for sample 8 : C51 lib**

Peak	Size [bp]	Conc. [pg/μl]	Molarity [pmol/l]	Observations
27	18,451	0.00	0.0	
28	20,407	0.00	0.0	

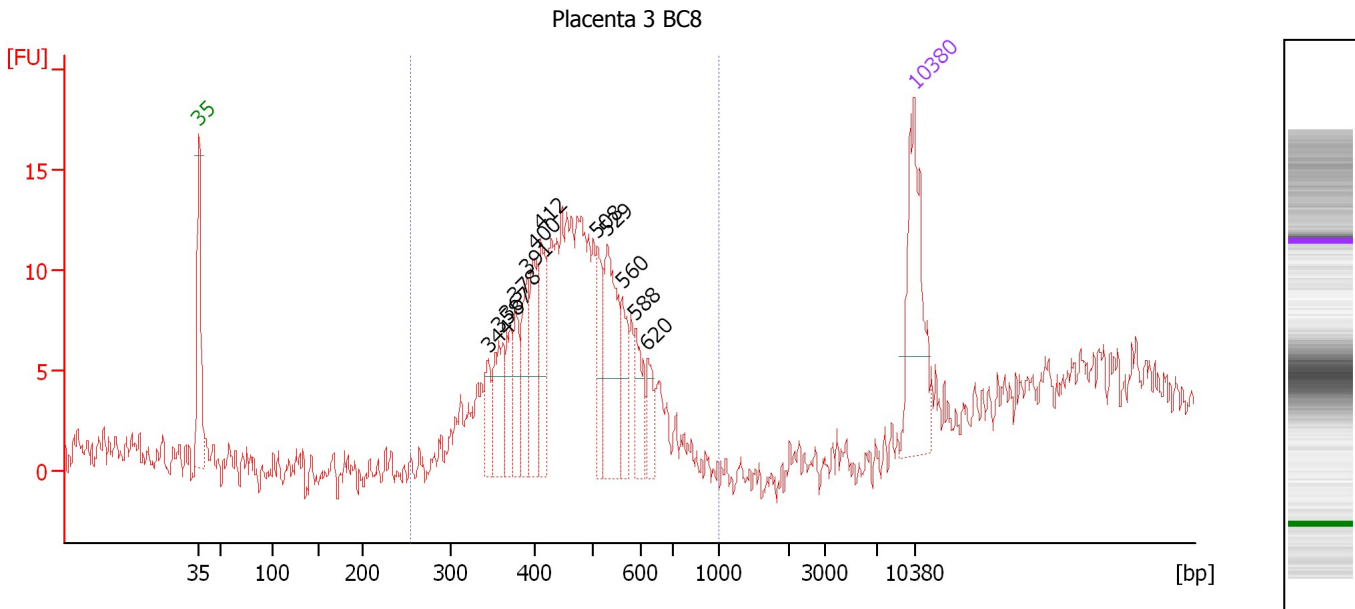
Region table for sample 8 : C51 lib

From [bp]	Molarity [pmol/l]	Average Size [bp]	Conc. [pg/μl]	To [bp]	Corr. Area	% of Total	Size distribution in CV [%]	Color
240	28,813.1	354	6,649.65	462	5,105.8	80	10.9	

Assay Class: High Sensitivity DNA Assay
 Data Path: C:\...ents and Settings\Bioanalyzer\2012-02-17\2012-02-17_002.xad

Created: 2/17/2012 10:14:54 AM
 Modified: 2/17/2012 11:02:06 AM

Electropherogram Summary Continued ...



Overall Results for sample 9 : Placenta 3 BC8

Number of peaks found: 12 Corr. Area 1: 134.4
 Noise: 1.0

Peak table for sample 9 : Placenta 3 BC8

Peak	Size [bp]	Conc. [pg/μl]	Molarity [pmol/l]	Observations
1	35	125.00	5,411.3	Lower Marker
2	344	24.74	108.8	
3	358	43.17	182.8	
4	367	31.36	129.3	
5	378	31.49	126.3	
6	391	37.76	146.3	
7	400	48.89	185.1	
8	412	55.35	203.6	
9	508	36.23	108.0	
10	529	80.01	229.0	
11	560	29.41	79.6	
12	588	29.45	75.9	
13	620	18.93	46.3	
14	10,380	75.00	10.9	Upper Marker

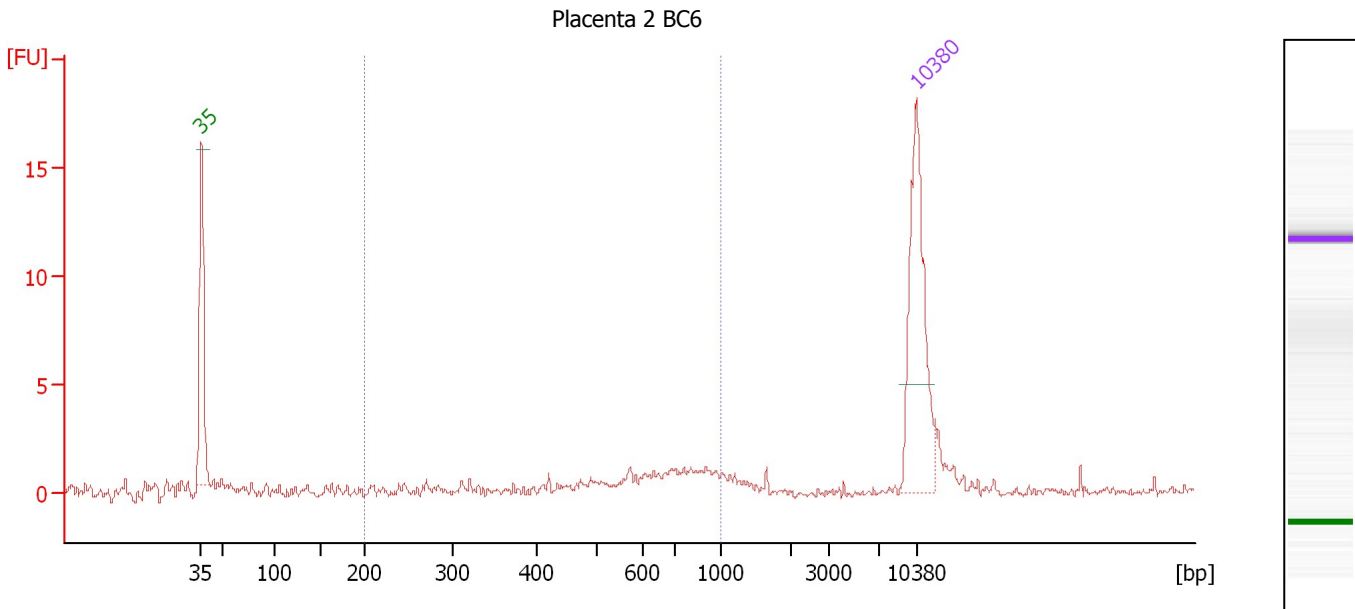
Region table for sample 9 : Placenta 3 BC8

From [bp]	Molarity [pmol/l]	Average Size [bp]	Conc. [pg/μl]	To [bp]	Corr. Area	% of Total	Size distribution in CV [%]	Color
255	1,913.3	465	567.71	1,000	134.4	87	15.9	Blue

Assay Class: High Sensitivity DNA Assay
 Data Path: C:\...ents and Settings\Bioanalyzer\2012-02-17\2012-02-17_002.xad

Created: 2/17/2012 10:14:54 AM
 Modified: 2/17/2012 11:02:06 AM

Electropherogram Summary Continued ...



Overall Results for sample 10 : Placenta 2 BC6

Number of peaks found: 0 Corr. Area 1: 12.5
 Noise: 0.2

Peak table for sample 10 : Placenta 2 BC6

Peak	Size [bp]	Conc. [pg/μl]	Molarity [pmol/l]	Observations
1	35	125.00	5,411.3	Lower Marker
2	10,380	75.00	10.9	Upper Marker

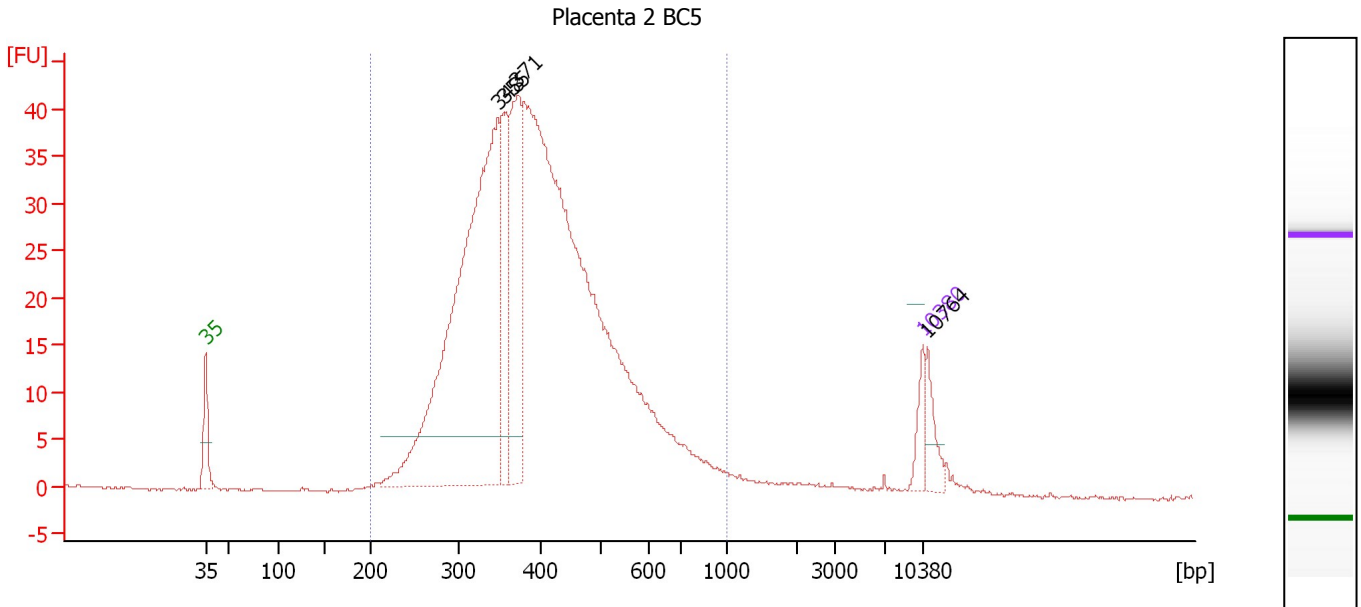
Region table for sample 10 : Placenta 2 BC6

From [bp]	Molarity [pmol/l]	Average Size [bp]	Conc. [pg/μl]	To [bp]	Corr. Area	% of Total	Size distribution in CV [%]	Color
200	138.6	640	48.76	1,000	12.5	53	29.8	Blue

Assay Class: High Sensitivity DNA Assay
 Data Path: C:\...ents and Settings\Bioanalyzer\2012-02-17\2012-02-17_002.xad

Created: 2/17/2012 10:14:54 AM
 Modified: 2/17/2012 11:02:06 AM

Electropherogram Summary Continued ...



Overall Results for sample 11 : Placenta 2 BC5

Number of peaks found: 4 Corr. Area 1: 774.8
 Noise: 0.2

Peak table for sample 11 : Placenta 2 BC5

Peak	Size [bp]	Conc. [pg/μl]	Molarity [pmol/l]	Observations
1	35	125.00	5,411.3	Lower Marker
2	348	2,582.29	11,249.3	
3	355	452.91	1,933.9	
4	371	648.89	2,646.6	
5	10,380	75.00	10.9	Upper Marker
6	10,764	0.00	0.0	

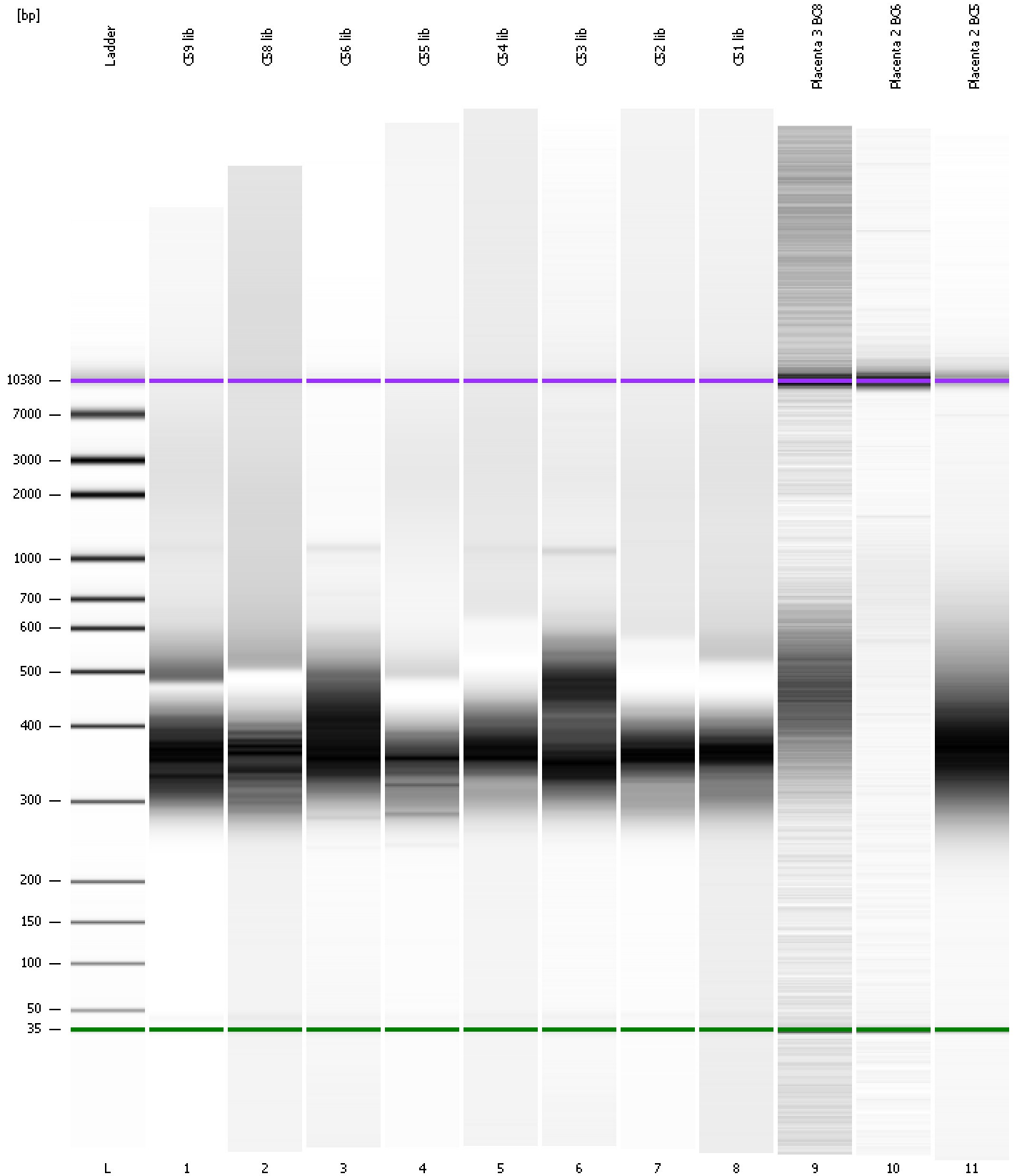
Region table for sample 11 : Placenta 2 BC5

From [bp]	Molarity [pmol/l]	Average Size [bp]	Conc. [pg/μl]	To [bp]	Corr. Area	% of Total	Size distribution in CV [%]	Color
200	32,308.4	411	8,068.78	1,000	774.8	96	27.2	Blue

Assay Class: High Sensitivity DNA Assay
Data Path: C:\...ents and Settings\Bioanalyzer\2012-02-17\2012-02-17_002.xad

Created: 2/17/2012 10:14:54 AM
Modified: 2/17/2012 11:02:06 AM

Gel Image



Assay Class: High Sensitivity DNA Assay
 Data Path: C:\...ents and Settings\Bioanalyzer\2012-02-17\2012-02-17_002.xad

Created: 2/17/2012 10:14:54 AM
 Modified: 2/17/2012 11:02:06 AM

Run Logbook

Description	Number	Source	Category	Sub Category	Time	Time Zone	User	Host
Run ended on port 1 (Number of wells acquired: 12)		Instrument	Run		2/17/2012 10:56:12 AM	(GMT --08:00) Pacific Standard Time	UC Davis	D8XSMGH1
Run started on port 1 (File: C:\Documents and Settings\Bioanalyzer\2012-02-17\2012-02-17_002.xad)		Instrument	Run		2/17/2012 10:15:00 AM	(GMT --08:00) Pacific Standard Time	UC Davis	D8XSMGH1
Product Number : G2938B		Instrument	Run		2/17/2012 10:15:00 AM	(GMT --08:00) Pacific Standard Time	UC Davis	D8XSMGH1
Name :		Instrument	Run		2/17/2012 10:15:00 AM	(GMT --08:00) Pacific Standard Time	UC Davis	D8XSMGH1
Vendor : Agilent Technologies		Instrument	Run		2/17/2012 10:15:00 AM	(GMT --08:00) Pacific Standard Time	UC Davis	D8XSMGH1
Serial# : DE13701086		Instrument	Run		2/17/2012 10:15:00 AM	(GMT --08:00) Pacific Standard Time	UC Davis	D8XSMGH1
Firmware : C.01.069		Instrument	Run		2/17/2012 10:15:00 AM	(GMT --08:00) Pacific Standard Time	UC Davis	D8XSMGH1
Cartridge : Electrode		Instrument	Run		2/17/2012 10:15:00 AM	(GMT --08:00) Pacific Standard Time	UC Davis	D8XSMGH1