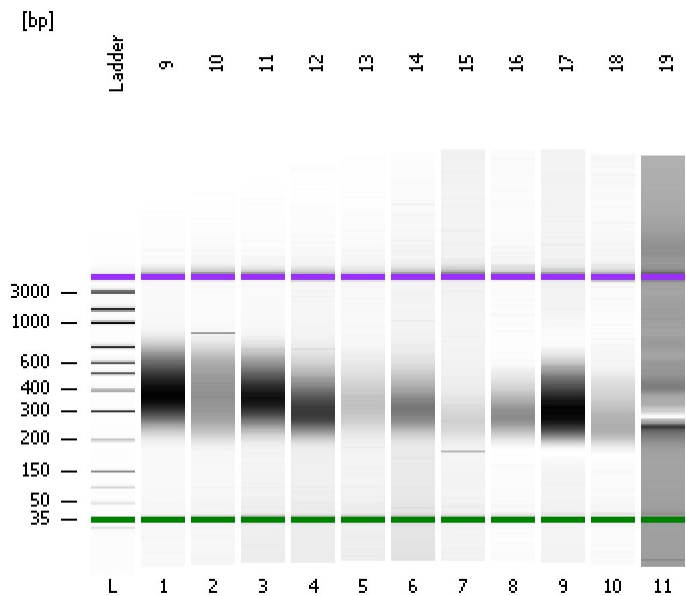


Assay Class: High Sensitivity DNA Assay  
Data Path: C:\...ents and Settings\Bioanalyzer\2012-02-17\2012-02-17\_003.xad

Created: 2/17/2012 11:15:55 AM  
Modified: 2/17/2012 11:57:16 AM

### Electrophoresis File Run Summary



#### Instrument Information:

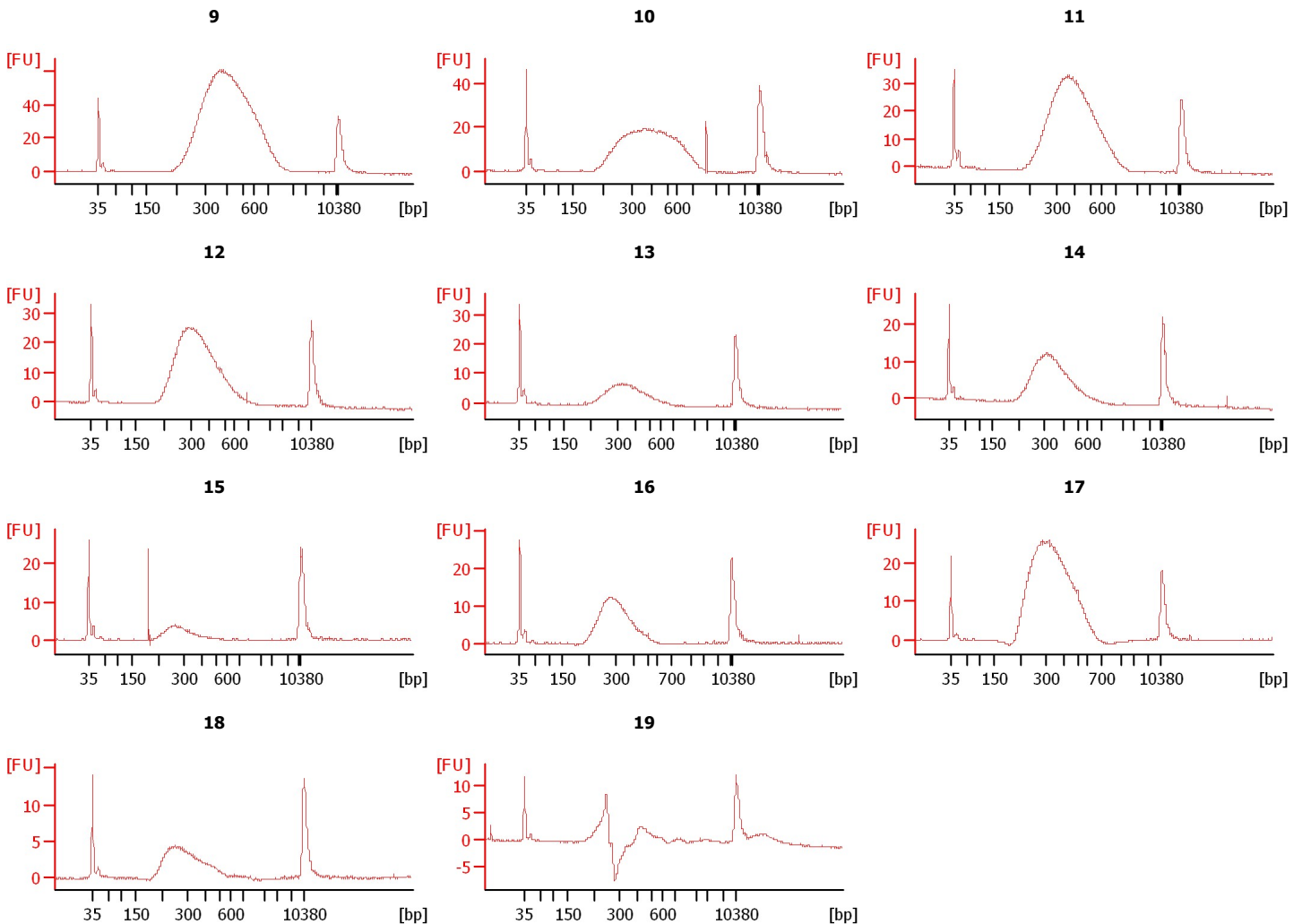
Instrument Name: DE13701086      Firmware: C.01.069  
Serial#: DE13701086      Type: G2938B

#### Assay Information:

Assay Origin Path: C:\Program Files\Agilent\2100 bioanalyzer\2100 expert\assays\dsDNA\High Sensitivity DNA.xsy  
Assay Class: High Sensitivity DNA Assay  
Version: 1.03  
Assay Comments: Copyright © 2003-2010 Agilent Technologies

#### Chip Information:

Chip Lot #:      Reagent Kit Lot #:      Chip Comments:



Assay Class: High Sensitivity DNA Assay  
Data Path: C:\...ents and Settings\Bioanalyzer\2012-02-17\2012-02-17\_003.xad

Created: 2/17/2012 11:15:55 AM  
Modified: 2/17/2012 11:57:16 AM

**Electrophoresis File Run Summary (Chip Summary)**

| Sample Name | Sample Comment | Rest. Digest             | Status | Observation | Result Label | Result Color |
|-------------|----------------|--------------------------|--------|-------------|--------------|--------------|
| 9           |                | <input type="checkbox"/> | ✓      |             |              |              |
| 10          |                | <input type="checkbox"/> | ✓      |             |              |              |
| 11          |                | <input type="checkbox"/> | ✓      |             |              |              |
| 12          |                | <input type="checkbox"/> | ✓      |             |              |              |
| 13          |                | <input type="checkbox"/> | ✓      |             |              |              |
| 14          |                | <input type="checkbox"/> | ✓      |             |              |              |
| 15          |                | <input type="checkbox"/> | ✓      |             |              |              |
| 16          |                | <input type="checkbox"/> | ✓      |             |              |              |
| 17          |                | <input type="checkbox"/> | ✓      |             |              |              |
| 18          |                | <input type="checkbox"/> | ✓      |             |              |              |
| 19          |                | <input type="checkbox"/> | ✓      |             |              |              |
| Ladder      |                | <input type="checkbox"/> | ✓      |             |              |              |

**Chip Lot #**

**Reagent Kit Lot #**

**Chip Comments :**

Assay Class: High Sensitivity DNA Assay  
Data Path: C:\...ents and Settings\Bioanalyzer\2012-02-17\2012-02-17\_003.xad

Created: 2/17/2012 11:15:55 AM  
Modified: 2/17/2012 11:57:16 AM

**Electrophoresis Assay Details**

**General Analysis Settings**

Number of Available Sample and Ladder Wells (Max.) : 12  
Minimum Visible Range [s] : 32  
Maximum Visible Range [s] : 138  
Start Analysis Time Range [s] : 33  
End Analysis Time Range [s] : 137.5  
Ladder Concentration [pg/μl] : 1950  
Uses Standard Area for Ladder Fragments  
Lower Marker Concentration [pg/μl] : 125  
Upper Marker Concentration [pg/μl] : 75  
Used Upper Marker for Quantitation  
Standard Curve Fit is Point to Point  
Show Data Aligned to Lower and Upper Marker

**Integrator Settings**

Integration Start Time [s] : 33.05  
Integration End Time [s] : 137  
Slope Threshold : 0.8  
Height Threshold [FU] : 5  
Area Threshold : 0.1  
Width Threshold [s] : 0.6  
Baseline Plateau [s] : 0.5

**Filter Settings**

Filter Width [s] : 0.5  
Polynomial Order : 4

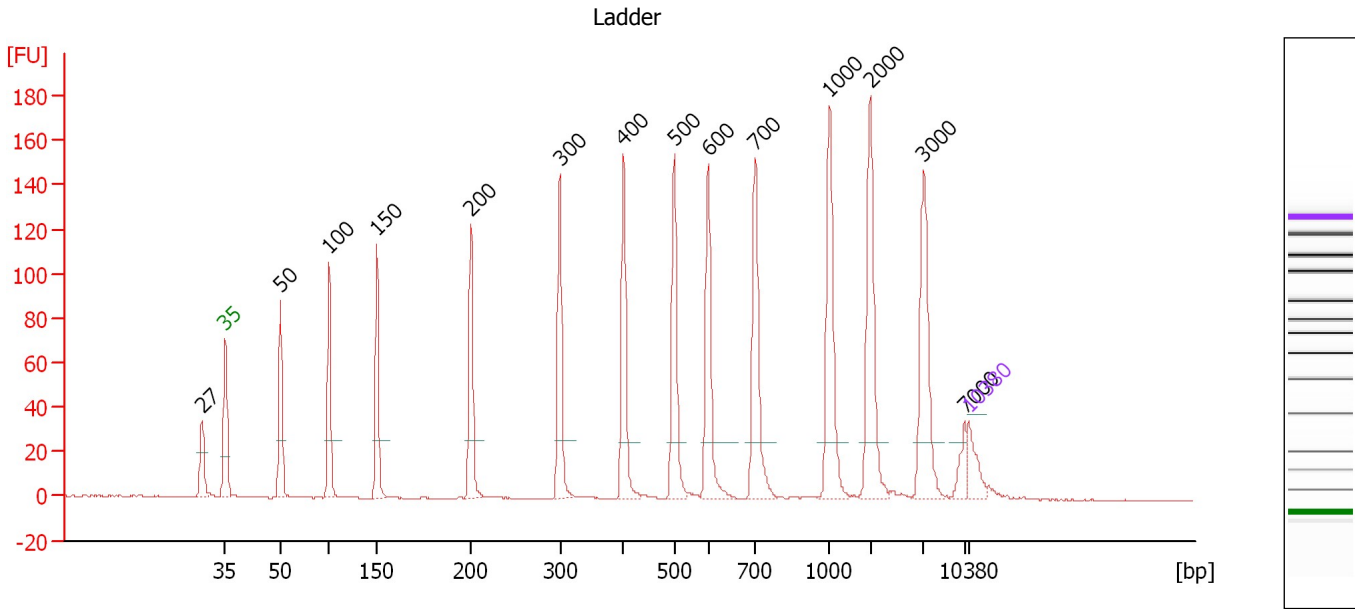
**Ladder**

| Ladder Peak | Size  | Area |
|-------------|-------|------|
| 1           | 35    | 160  |
| 2           | 50    | 210  |
| 3           | 100   | 208  |
| 4           | 150   | 221  |
| 5           | 200   | 242  |
| 6           | 300   | 270  |
| 7           | 400   | 305  |
| 8           | 500   | 306  |
| 9           | 600   | 336  |
| 10          | 700   | 321  |
| 11          | 1000  | 366  |
| 12          | 2000  | 413  |
| 13          | 3000  | 411  |
| 14          | 7000  | 400  |
| 15          | 10380 | 214  |

Assay Class: High Sensitivity DNA Assay  
 Data Path: C:\...ents and Settings\Bioanalyzer\2012-02-17\2012-02-17\_003.xad

Created: 2/17/2012 11:15:55 AM  
 Modified: 2/17/2012 11:57:16 AM

**Electropherogram Summary**



**Overall Results for Ladder**

Noise: 0.1

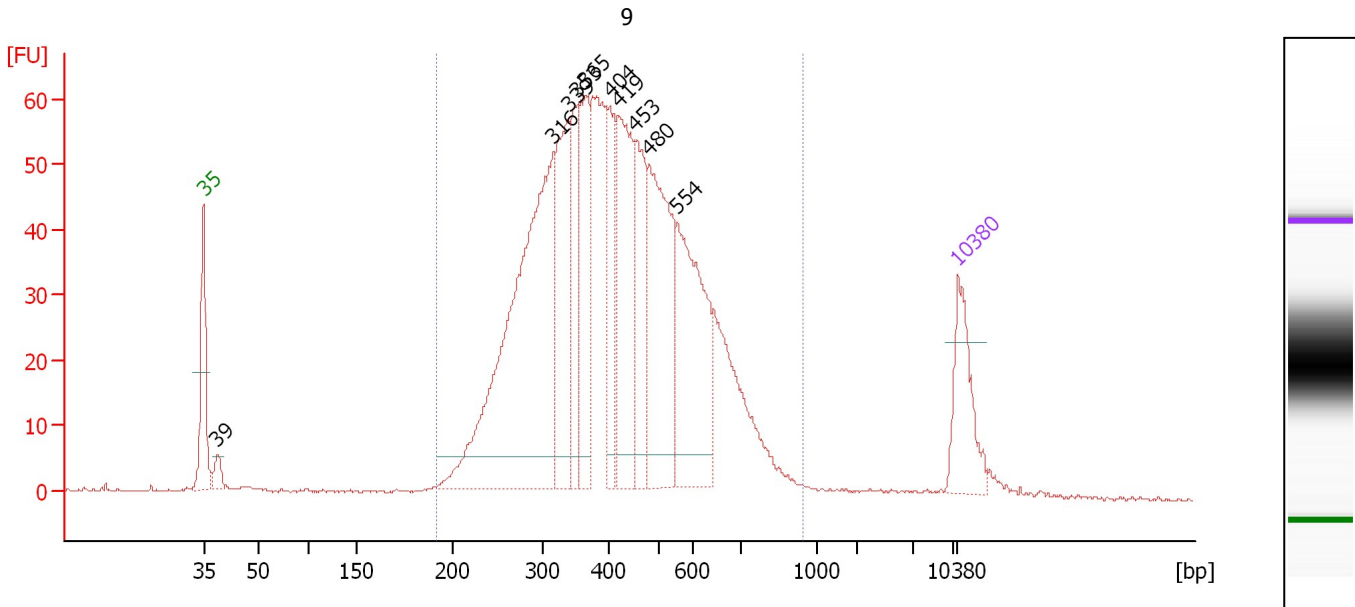
**Peak table for Ladder**

| Peak | Size [bp] | Conc. [pg/μl] | Molarity [pmol/l] | Observations |
|------|-----------|---------------|-------------------|--------------|
| 1    | 27        | 0.00          | 0.0               |              |
| 2    | 35        | 125.00        | 5,411.3           | Lower Marker |
| 3    | 50        | 150.00        | 4,545.5           | Ladder Peak  |
| 4    | 100       | 150.00        | 2,272.7           | Ladder Peak  |
| 5    | 150       | 150.00        | 1,515.2           | Ladder Peak  |
| 6    | 200       | 150.00        | 1,136.4           | Ladder Peak  |
| 7    | 300       | 150.00        | 757.6             | Ladder Peak  |
| 8    | 400       | 150.00        | 568.2             | Ladder Peak  |
| 9    | 500       | 150.00        | 454.5             | Ladder Peak  |
| 10   | 600       | 150.00        | 378.8             | Ladder Peak  |
| 11   | 700       | 150.00        | 324.7             | Ladder Peak  |
| 12   | 1,000     | 150.00        | 227.3             | Ladder Peak  |
| 13   | 2,000     | 150.00        | 113.6             | Ladder Peak  |
| 14   | 3,000     | 150.00        | 75.8              | Ladder Peak  |
| 15   | 7,000     | 150.00        | 32.5              | Ladder Peak  |
| 16   | 10,380    | 75.00         | 10.9              | Upper Marker |

Assay Class: High Sensitivity DNA Assay  
 Data Path: C:\...ents and Settings\Bioanalyzer\2012-02-17\2012-02-17\_003.xad

Created: 2/17/2012 11:15:55 AM  
 Modified: 2/17/2012 11:57:16 AM

**Electropherogram Summary Continued ...**



**Overall Results for sample 1 : 9**

Number of peaks found: 10                      Corr. Area 1: 1,313.3  
 Noise: 0.2

**Peak table for sample 1 : 9**

| Peak | Size [bp] | Conc. [pg/μl] | Molarity [pmol/l] | Observations |
|------|-----------|---------------|-------------------|--------------|
| 1    | 35        | 125.00        | 5,411.3           | Lower Marker |
| 2    | 39        | 25.54         | 999.1             |              |
| 3    | 316       | 683.55        | 3,276.9           |              |
| 4    | 339       | 197.76        | 883.8             |              |
| 5    | 353       | 106.11        | 455.5             |              |
| 6    | 365       | 182.14        | 755.4             |              |
| 7    | 404       | 89.62         | 336.2             |              |
| 8    | 419       | 215.90        | 779.9             |              |
| 9    | 453       | 143.57        | 480.6             |              |
| 10   | 480       | 267.58        | 845.4             |              |
| 11   | 554       | 247.56        | 677.5             |              |
| 12   | 10,380    | 75.00         | 10.9              | Upper Marker |

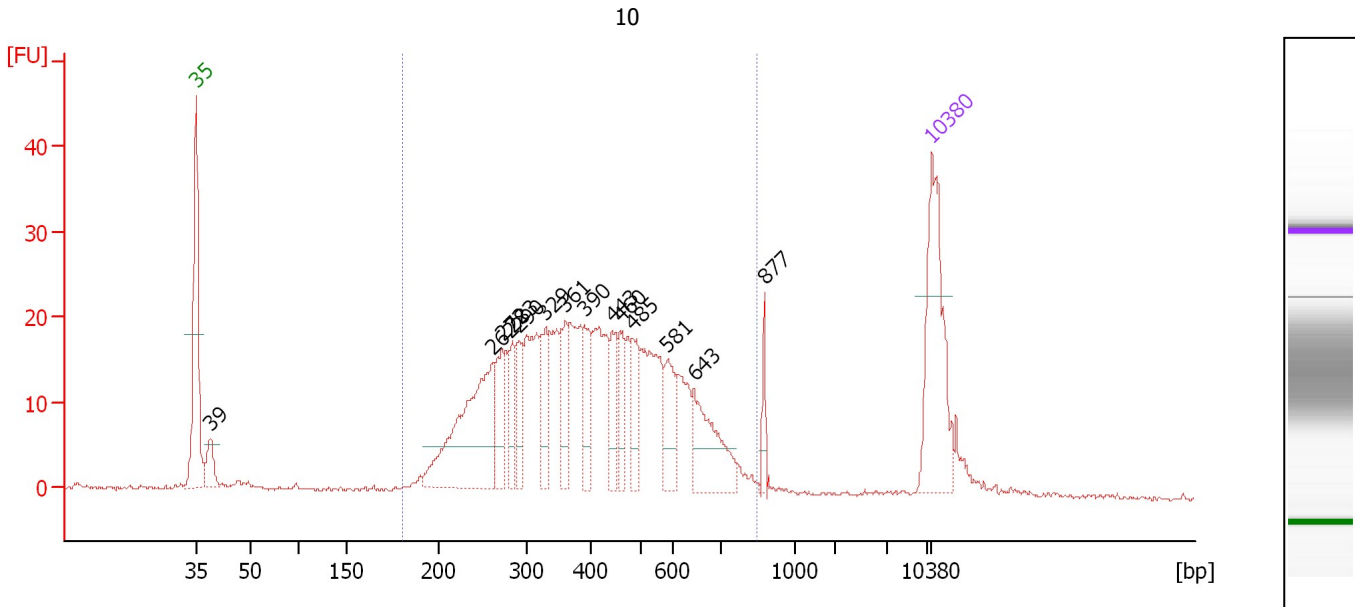
**Region table for sample 1 : 9**

| From [bp] | Molarity [pmol/l] | Average Size [bp] | Conc. [pg/μl] | To [bp] | Corr. Area | % of Total | Size distribution in CV [%] | Color |
|-----------|-------------------|-------------------|---------------|---------|------------|------------|-----------------------------|-------|
| 192       | 10,871.6          | 431               | 2,705.83      | 949     | 1,313.3    | 97         | 31.7                        | Blue  |

Assay Class: High Sensitivity DNA Assay  
 Data Path: C:\...ents and Settings\Bioanalyzer\2012-02-17\2012-02-17\_003.xad

Created: 2/17/2012 11:15:55 AM  
 Modified: 2/17/2012 11:57:16 AM

**Electropherogram Summary Continued ...**



**Overall Results for sample 2 : 10**

Number of peaks found: 14                      Corr. Area 1: 511.0  
 Noise: 0.3

**Peak table for sample 2 : 10**

| Peak | Size [bp] | Conc. [pg/μl] | Molarity [pmol/l] | Observations |
|------|-----------|---------------|-------------------|--------------|
| 1    | 35        | 125.00        | 5,411.3           | Lower Marker |
| 2    | 39        | 25.01         | 972.4             |              |
| 3    | 262       | 147.23        | 852.0             |              |
| 4    | 272       | 40.35         | 225.1             |              |
| 5    | 283       | 28.88         | 154.6             |              |
| 6    | 290       | 29.14         | 152.0             |              |
| 7    | 329       | 35.45         | 163.3             |              |
| 8    | 361       | 32.71         | 137.4             |              |
| 9    | 390       | 28.34         | 110.0             |              |
| 10   | 443       | 28.18         | 96.4              |              |
| 11   | 460       | 26.02         | 85.7              |              |
| 12   | 485       | 26.10         | 81.6              |              |
| 13   | 581       | 30.18         | 78.7              |              |
| 14   | 643       | 54.40         | 128.1             |              |
| 15   | 877       | 10.36         | 17.9              |              |
| 16   | 10,380    | 75.00         | 10.9              | Upper Marker |

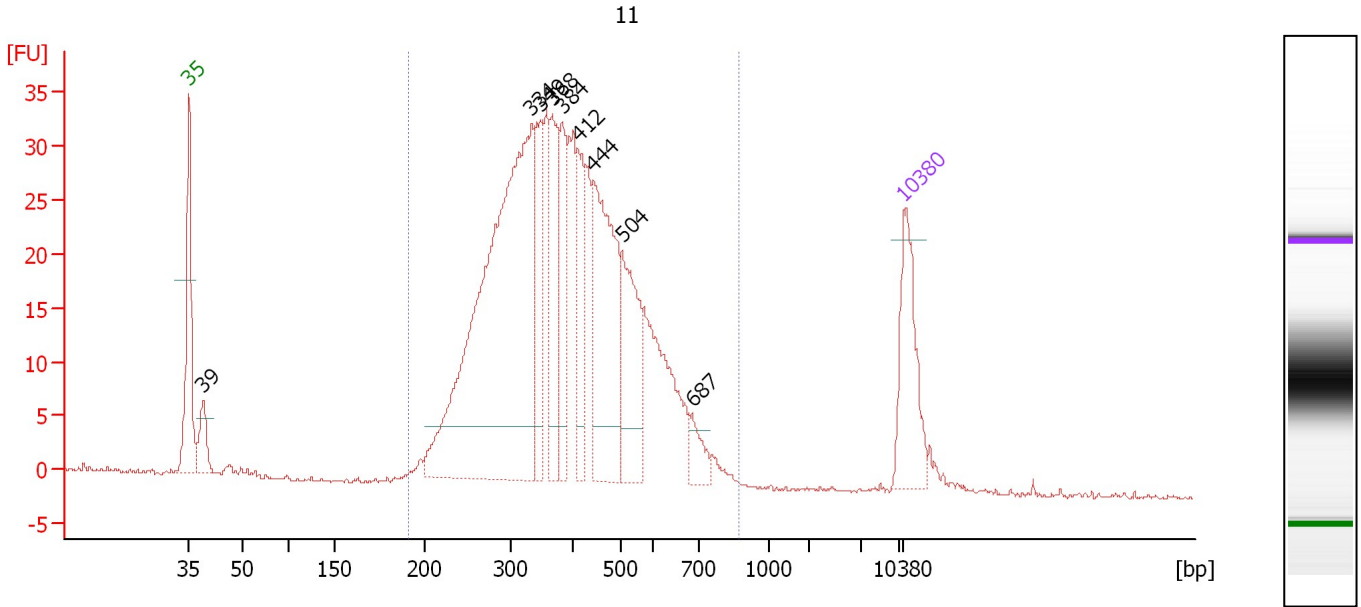
**Region table for sample 2 : 10**

| From [bp] | Molarity [pmol/l] | Average Size [bp] | Conc. [pg/μl] | To [bp] | Corr. Area | % of Total | Size distribution in CV [%] | Color |
|-----------|-------------------|-------------------|---------------|---------|------------|------------|-----------------------------|-------|
| 181       | 3,966.8           | 415               | 923.40        | 846     | 511.0      | 94         | 34.0                        | Blue  |

Assay Class: High Sensitivity DNA Assay  
 Data Path: C:\...ents and Settings\Bioanalyzer\2012-02-17\2012-02-17\_003.xad

Created: 2/17/2012 11:15:55 AM  
 Modified: 2/17/2012 11:57:16 AM

**Electropherogram Summary Continued ...**



**Overall Results for sample 3 : 11**

Number of peaks found: 9                      Corr. Area 1: 665.5  
 Noise: 0.2

**Peak table for sample 3 : 11**

| Peak | Size [bp] | Conc. [pg/μl] | Molarity [pmol/l] | Observations |
|------|-----------|---------------|-------------------|--------------|
| 1    | 35        | 125.00        | 5,411.3           | Lower Marker |
| 2    | 39        | 47.15         | 1,834.7           |              |
| 3    | 334       | 660.50        | 2,995.8           |              |
| 4    | 349       | 95.68         | 415.6             |              |
| 5    | 368       | 104.30        | 429.6             |              |
| 6    | 384       | 87.71         | 345.8             |              |
| 7    | 412       | 73.48         | 270.2             |              |
| 8    | 444       | 209.32        | 714.7             |              |
| 9    | 504       | 112.89        | 339.2             |              |
| 10   | 687       | 23.66         | 52.2              |              |
| 11   | 10,380    | 75.00         | 10.9              | Upper Marker |

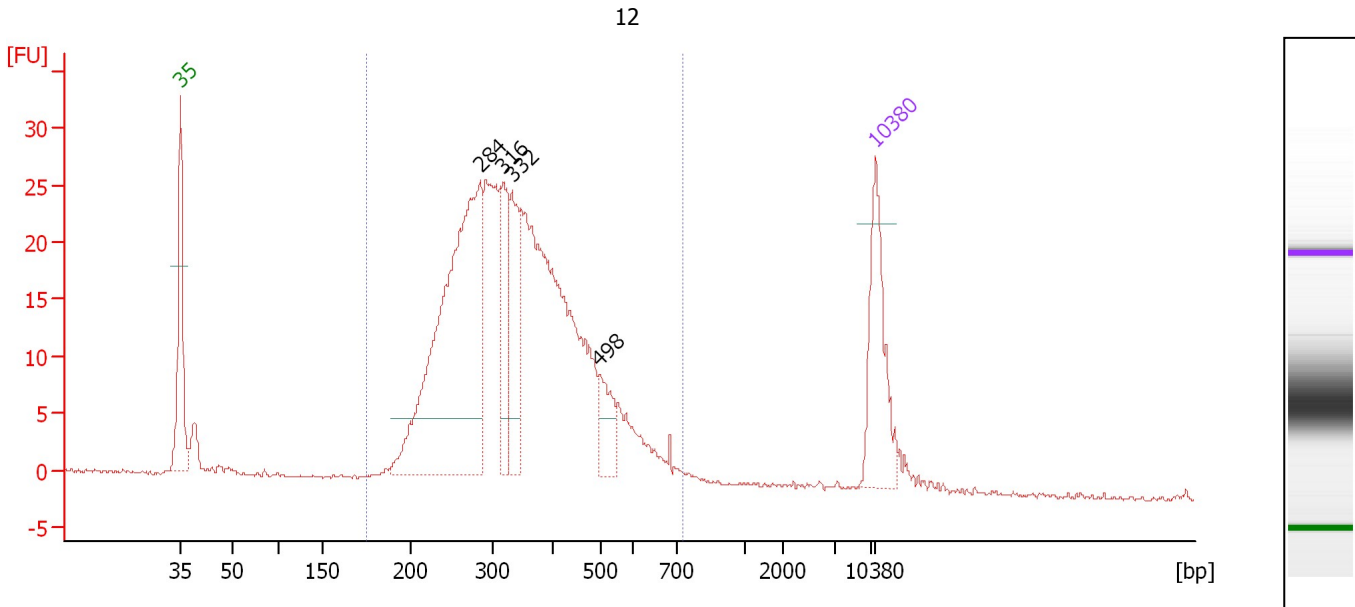
**Region table for sample 3 : 11**

| From [bp] | Molarity [pmol/l] | Average Size [bp] | Conc. [pg/μl] | To [bp] | Corr. Area | % of Total | Size distribution in CV [%] | Color |
|-----------|-------------------|-------------------|---------------|---------|------------|------------|-----------------------------|-------|
| 191       | 7,707.5           | 404               | 1,828.99      | 869     | 665.5      | 97         | 30.0                        | Blue  |

Assay Class: High Sensitivity DNA Assay  
 Data Path: C:\...ents and Settings\Bioanalyzer\2012-02-17\2012-02-17\_003.xad

Created: 2/17/2012 11:15:55 AM  
 Modified: 2/17/2012 11:57:16 AM

**Electropherogram Summary Continued ...**



**Overall Results for sample 4 : 12**

Number of peaks found: 4                      Corr. Area 1: 495.9  
 Noise: 0.2

**Peak table for sample 4 : 12**

| Peak | Size [bp] | Conc. [pg/μl] | Molarity [pmol/l] | Observations |
|------|-----------|---------------|-------------------|--------------|
| 1    | 35        | 125.00        | 5,411.3           | Lower Marker |
| 2    | 284       | 465.43        | 2,481.3           |              |
| 3    | 316       | 86.82         | 415.7             |              |
| 4    | 332       | 97.94         | 447.5             |              |
| 5    | 498       | 38.71         | 117.7             |              |
| 6    | 10,380    | 75.00         | 10.9              | Upper Marker |

**Region table for sample 4 : 12**

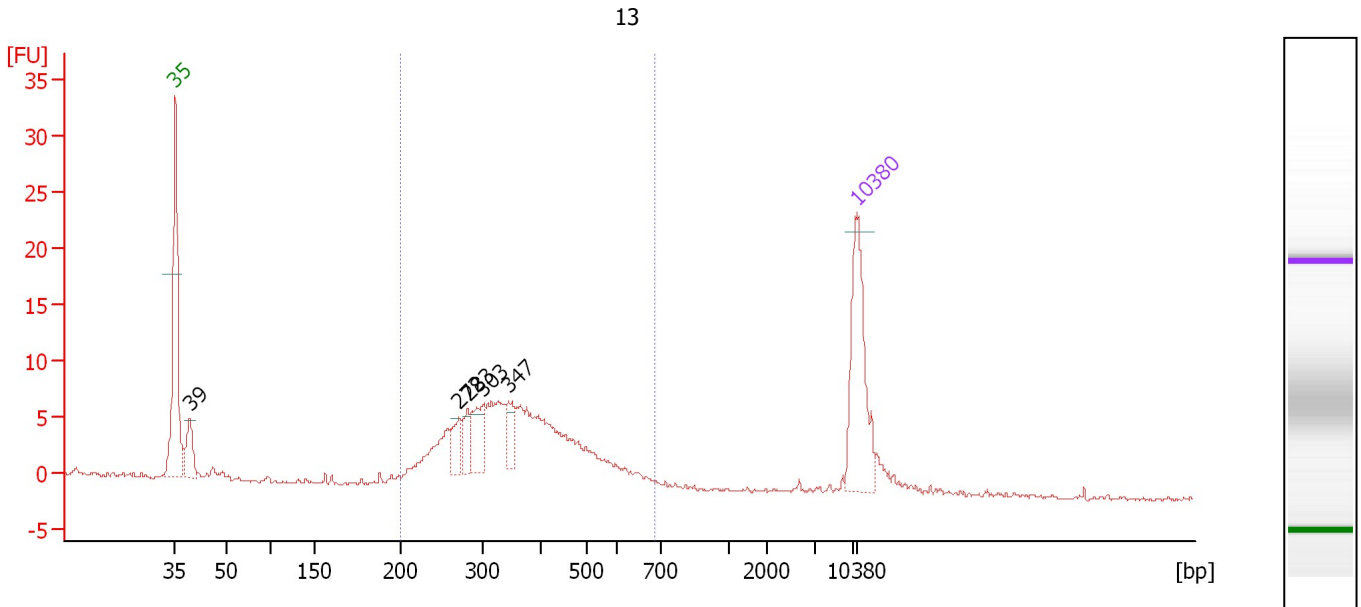
| From [bp] | Molarity [pmol/l] | Average Size [bp] | Conc. [pg/μl] | To [bp] | Corr. Area | % of Total | Size distribution in CV [%] | Color |
|-----------|-------------------|-------------------|---------------|---------|------------|------------|-----------------------------|-------|
| 175       | 6,631.1           | 351               | 1,381.16      | 729     | 495.9      | 95         | 29.9                        | Blue  |



Assay Class: High Sensitivity DNA Assay  
 Data Path: C:\...ents and Settings\Bioanalyzer\2012-02-17\2012-02-17\_003.xad

Created: 2/17/2012 11:15:55 AM  
 Modified: 2/17/2012 11:57:16 AM

**Electropherogram Summary Continued ...**



**Overall Results for sample 5 : 13**

Number of peaks found: 5                      Corr. Area 1: 125.4  
 Noise: 0.1

**Peak table for sample 5 : 13**

| Peak | Size [bp] | Conc. [pg/μl] | Molarity [pmol/l] | Observations |
|------|-----------|---------------|-------------------|--------------|
| 1    | 35        | 125.00        | 5,411.3           | Lower Marker |
| 2    | 39        | 39.40         | 1,519.4           |              |
| 3    | 272       | 23.38         | 130.3             |              |
| 4    | 283       | 18.54         | 99.3              |              |
| 5    | 303       | 34.34         | 171.8             |              |
| 6    | 347       | 21.77         | 95.2              |              |
| 7    | 10,380    | 75.00         | 10.9              | Upper Marker |

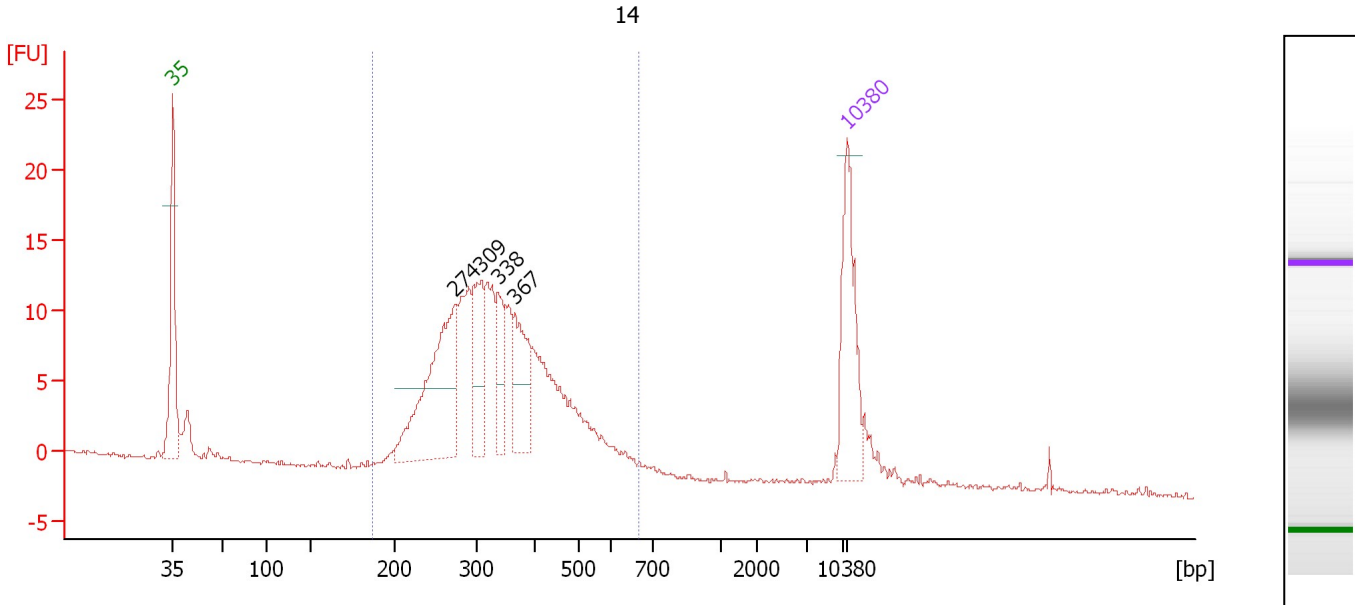
**Region table for sample 5 : 13**

| From [bp] | Molarity [pmol/l] | Average Size [bp] | Conc. [pg/μl] | To [bp] | Corr. Area | % of Total | Size distribution in CV [%] | Color |
|-----------|-------------------|-------------------|---------------|---------|------------|------------|-----------------------------|-------|
| 200       | 1,864.4           | 368               | 413.41        | 684     | 125.4      | 87         | 27.2                        | Blue  |

Assay Class: High Sensitivity DNA Assay  
 Data Path: C:\...ents and Settings\Bioanalyzer\2012-02-17\2012-02-17\_003.xad

Created: 2/17/2012 11:15:55 AM  
 Modified: 2/17/2012 11:57:16 AM

**Electropherogram Summary Continued ...**



**Overall Results for sample 6 : 14**

Number of peaks found: 4                      Corr. Area 1: 220.6  
 Noise: 0.1

**Peak table for sample 6 : 14**

| Peak | Size [bp] | Conc. [pg/μl] | Molarity [pmol/l] | Observations |
|------|-----------|---------------|-------------------|--------------|
| 1    | 35        | 125.00        | 5,411.3           | Lower Marker |
| 2    | 274       | 191.15        | 1,058.0           |              |
| 3    | 309       | 73.09         | 358.8             |              |
| 4    | 338       | 43.66         | 195.7             |              |
| 5    | 367       | 68.46         | 282.9             |              |
| 6    | 10,380    | 75.00         | 10.9              | Upper Marker |

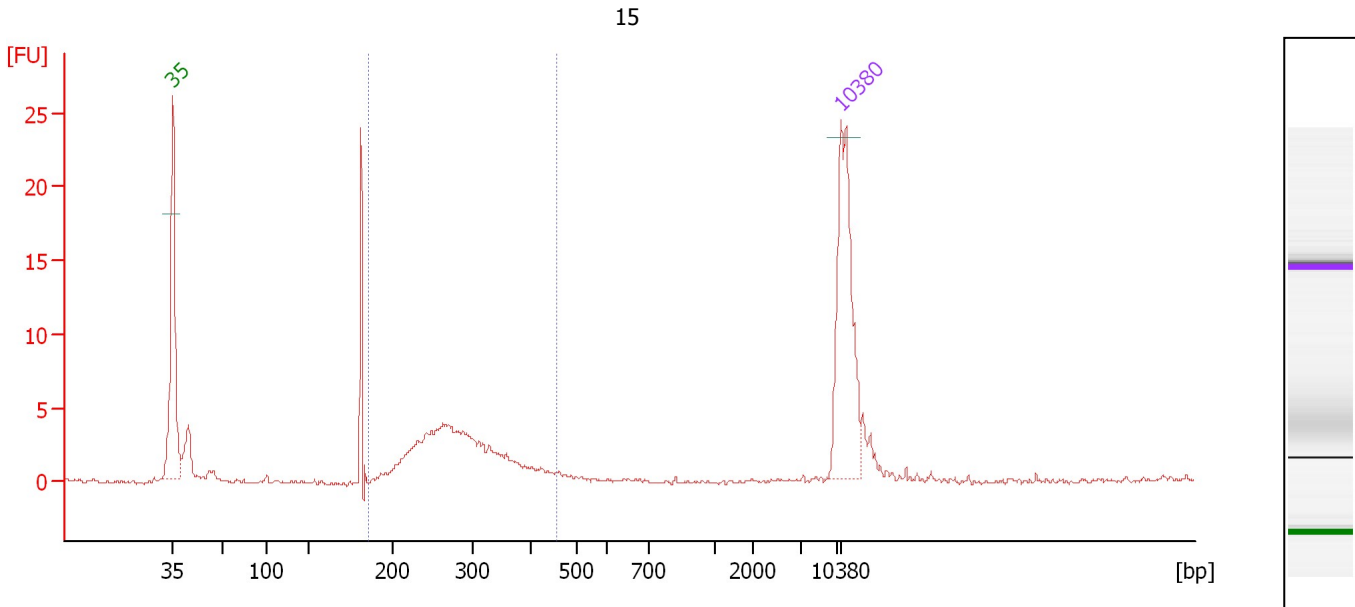
**Region table for sample 6 : 14**

| From [bp] | Molarity [pmol/l] | Average Size [bp] | Conc. [pg/μl] | To [bp] | Corr. Area | % of Total | Size distribution in CV [%] | Color |
|-----------|-------------------|-------------------|---------------|---------|------------|------------|-----------------------------|-------|
| 186       | 3,768.2           | 349               | 797.09        | 668     | 220.6      | 92         | 26.8                        | Blue  |

Assay Class: High Sensitivity DNA Assay  
 Data Path: C:\...ents and Settings\Bioanalyzer\2012-02-17\2012-02-17\_003.xad

Created: 2/17/2012 11:15:55 AM  
 Modified: 2/17/2012 11:57:16 AM

**Electropherogram Summary Continued ...**



**Overall Results for sample 7 : 15**

Number of peaks found: 0                      Corr. Area 1: 43.5  
 Noise: 0.1

**Peak table for sample 7 : 15**

| Peak | Size [bp] | Conc. [pg/μl] | Molarity [pmol/l] | Observations |
|------|-----------|---------------|-------------------|--------------|
| 1    | 35        | 125.00        | 5,411.3           | Lower Marker |
| 2    | 10,380    | 75.00         | 10.9              | Upper Marker |

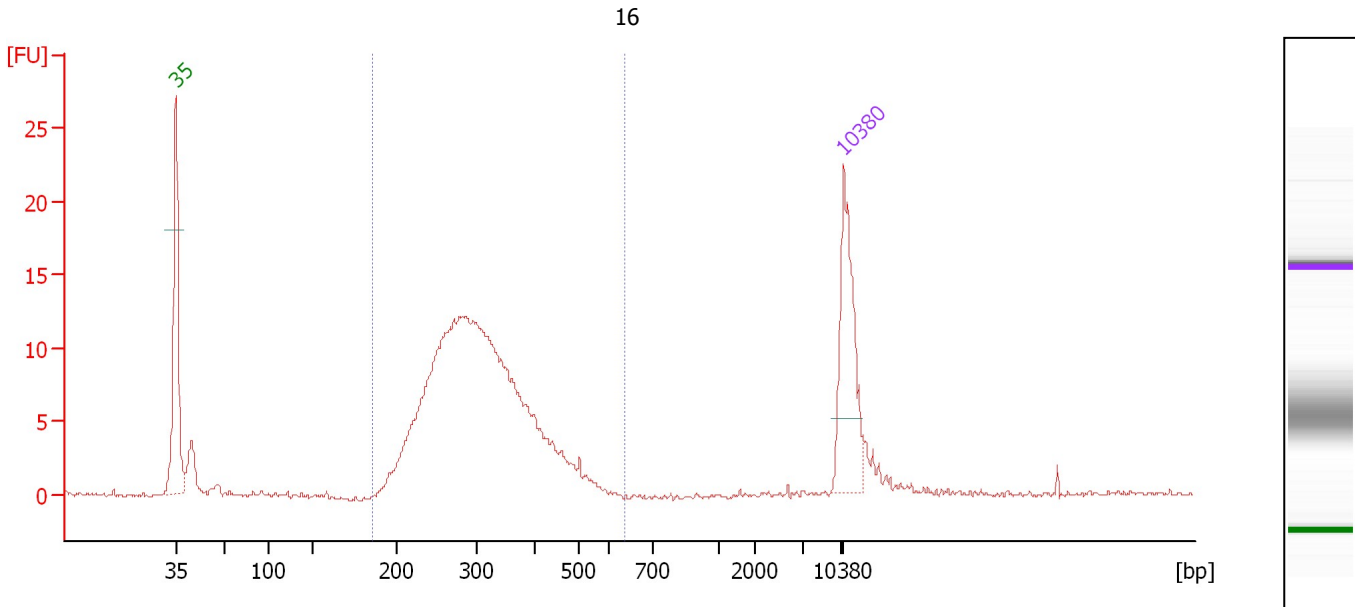
**Region table for sample 7 : 15**

| From [bp] | Molarity [pmol/l] | Average Size [bp] | Conc. [pg/μl] | To [bp] | Corr. Area | % of Total | Size distribution in CV [%] | Color |
|-----------|-------------------|-------------------|---------------|---------|------------|------------|-----------------------------|-------|
| 185       | 787.9             | 286               | 143.19        | 456     | 43.5       | 67         | 18.9                        | Blue  |

Assay Class: High Sensitivity DNA Assay  
 Data Path: C:\...ents and Settings\Bioanalyzer\2012-02-17\2012-02-17\_003.xad

Created: 2/17/2012 11:15:55 AM  
 Modified: 2/17/2012 11:57:16 AM

**Electropherogram Summary Continued ...**



**Overall Results for sample 8 : 16**

Number of peaks found: 0  
 Noise: 0.2  
 Corr. Area 1: 181.6

**Peak table for sample 8 : 16**

| Peak | Size [bp] | Conc. [pg/μl] | Molarity [pmol/l] | Observations |
|------|-----------|---------------|-------------------|--------------|
| 1    | 35        | 125.00        | 5,411.3           | Lower Marker |
| 2    | 10,380    | 75.00         | 10.9              | Upper Marker |

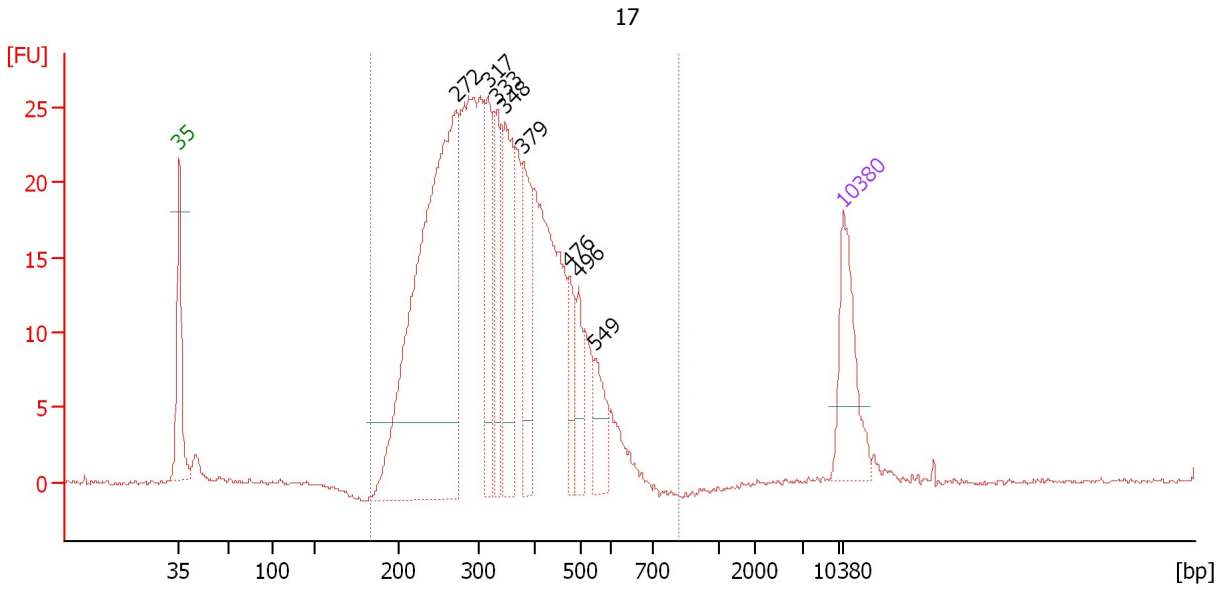
**Region table for sample 8 : 16**

| From [bp] | Molarity [pmol/l] | Average Size [bp] | Conc. [pg/μl] | To [bp] | Corr. Area | % of Total | Size distribution in CV [%] | Color |
|-----------|-------------------|-------------------|---------------|---------|------------|------------|-----------------------------|-------|
| 186       | 3,607.2           | 314               | 702.54        | 636     | 181.6      | 90         | 23.2                        | Blue  |

Assay Class: High Sensitivity DNA Assay  
 Data Path: C:\...ents and Settings\Bioanalyzer\2012-02-17\2012-02-17\_003.xad

Created: 2/17/2012 11:15:55 AM  
 Modified: 2/17/2012 11:57:16 AM

**Electropherogram Summary Continued ...**



**Overall Results for sample 9 : 17**

Number of peaks found: 8                      Corr. Area 1: 507.9  
 Noise: 0.1

**Peak table for sample 9 : 17**

| Peak | Size [bp] | Conc. [pg/μl] | Molarity [pmol/l] | Observations |
|------|-----------|---------------|-------------------|--------------|
| 1    | 35        | 125.00        | 5,411.3           | Lower Marker |
| 2    | 272       | 688.58        | 3,834.6           |              |
| 3    | 317       | 102.31        | 488.5             |              |
| 4    | 333       | 88.86         | 404.1             |              |
| 5    | 348       | 152.03        | 661.8             |              |
| 6    | 379       | 106.09        | 424.3             |              |
| 7    | 476       | 40.88         | 130.2             |              |
| 8    | 496       | 46.71         | 142.8             |              |
| 9    | 549       | 46.49         | 128.4             |              |
| 10   | 10,380    | 75.00         | 10.9              | Upper Marker |

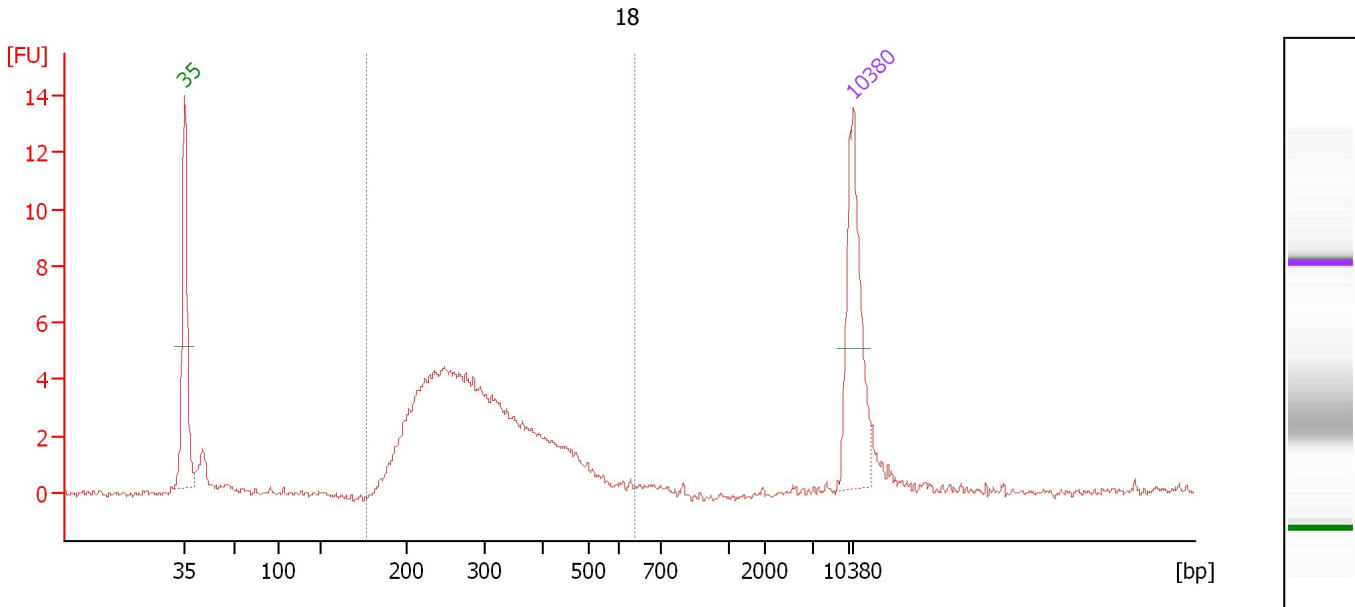
**Region table for sample 9 : 17**

| From [bp] | Molarity [pmol/l] | Average Size [bp] | Conc. [pg/μl] | To [bp] | Corr. Area | % of Total | Size distribution in CV [%] | Color |
|-----------|-------------------|-------------------|---------------|---------|------------|------------|-----------------------------|-------|
| 184       | 9,795.8           | 345               | 2,016.62      | 822     | 507.9      | 98         | 28.5                        | Blue  |

Assay Class: High Sensitivity DNA Assay  
 Data Path: C:\...ents and Settings\Bioanalyzer\2012-02-17\2012-02-17\_003.xad

Created: 2/17/2012 11:15:55 AM  
 Modified: 2/17/2012 11:57:16 AM

**Electropherogram Summary Continued ...**



**Overall Results for sample 10 : 18**

Number of peaks found: 0                      Corr. Area 1: 75.6  
 Noise: 0.1

**Peak table for sample 10 : 18**

| Peak | Size [bp] | Conc. [pg/μl] | Molarity [pmol/l] | Observations |
|------|-----------|---------------|-------------------|--------------|
| 1    | 35        | 125.00        | 5,411.3           | Lower Marker |
| 2    | 10,380    | 75.00         | 10.9              | Upper Marker |

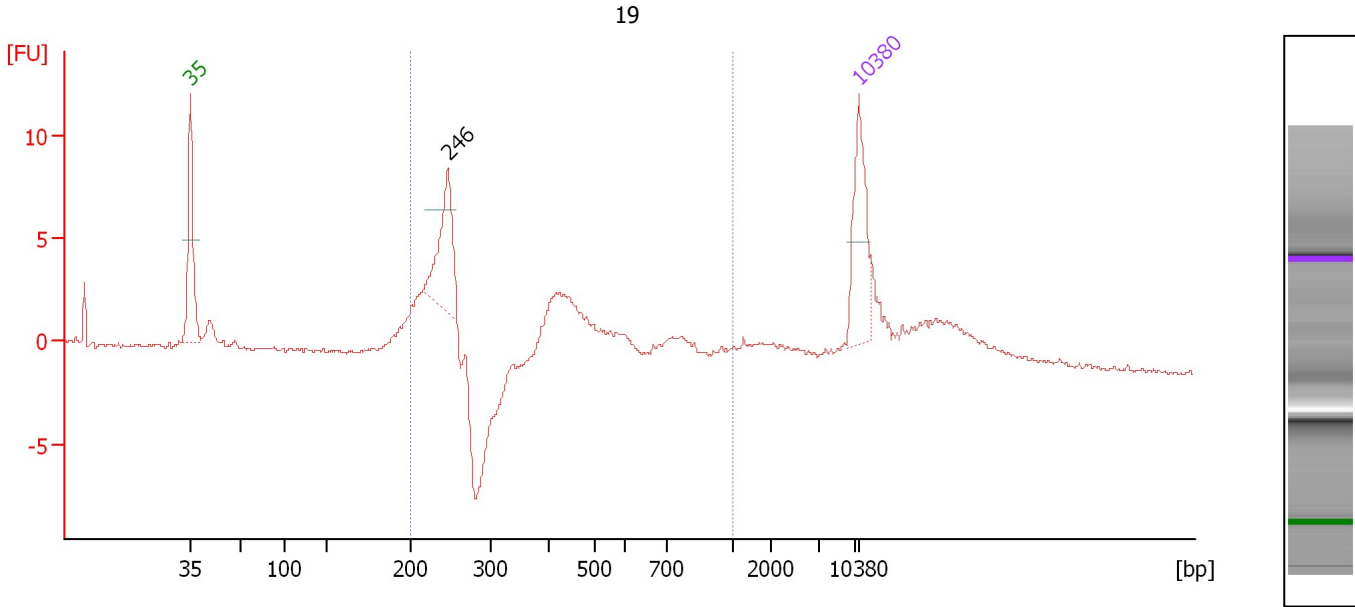
**Region table for sample 10 : 18**

| From [bp] | Molarity [pmol/l] | Average Size [bp] | Conc. [pg/μl] | To [bp] | Corr. Area | % of Total | Size distribution in CV [%] | Color |
|-----------|-------------------|-------------------|---------------|---------|------------|------------|-----------------------------|-------|
| 177       | 2,665.5           | 302               | 485.70        | 637     | 75.6       | 90         | 28.3                        | Blue  |

Assay Class: High Sensitivity DNA Assay  
 Data Path: C:\...ents and Settings\Bioanalyzer\2012-02-17\2012-02-17\_003.xad

Created: 2/17/2012 11:15:55 AM  
 Modified: 2/17/2012 11:57:16 AM

**Electropherogram Summary Continued ...**



**Overall Results for sample 11 : 19**

Number of peaks found: 1                      Corr. Area 1: 54.8  
 Noise: 0.1

**Peak table for sample 11 : 19**

| Peak | Size [bp] | Conc. [pg/μl] | Molarity [pmol/l] | Observations |
|------|-----------|---------------|-------------------|--------------|
| 1    | 35        | 125.00        | 5,411.3           | Lower Marker |
| 2    | 246       | 121.78        | 750.8             |              |
| 3    | 10,380    | 75.00         | 10.9              | Upper Marker |

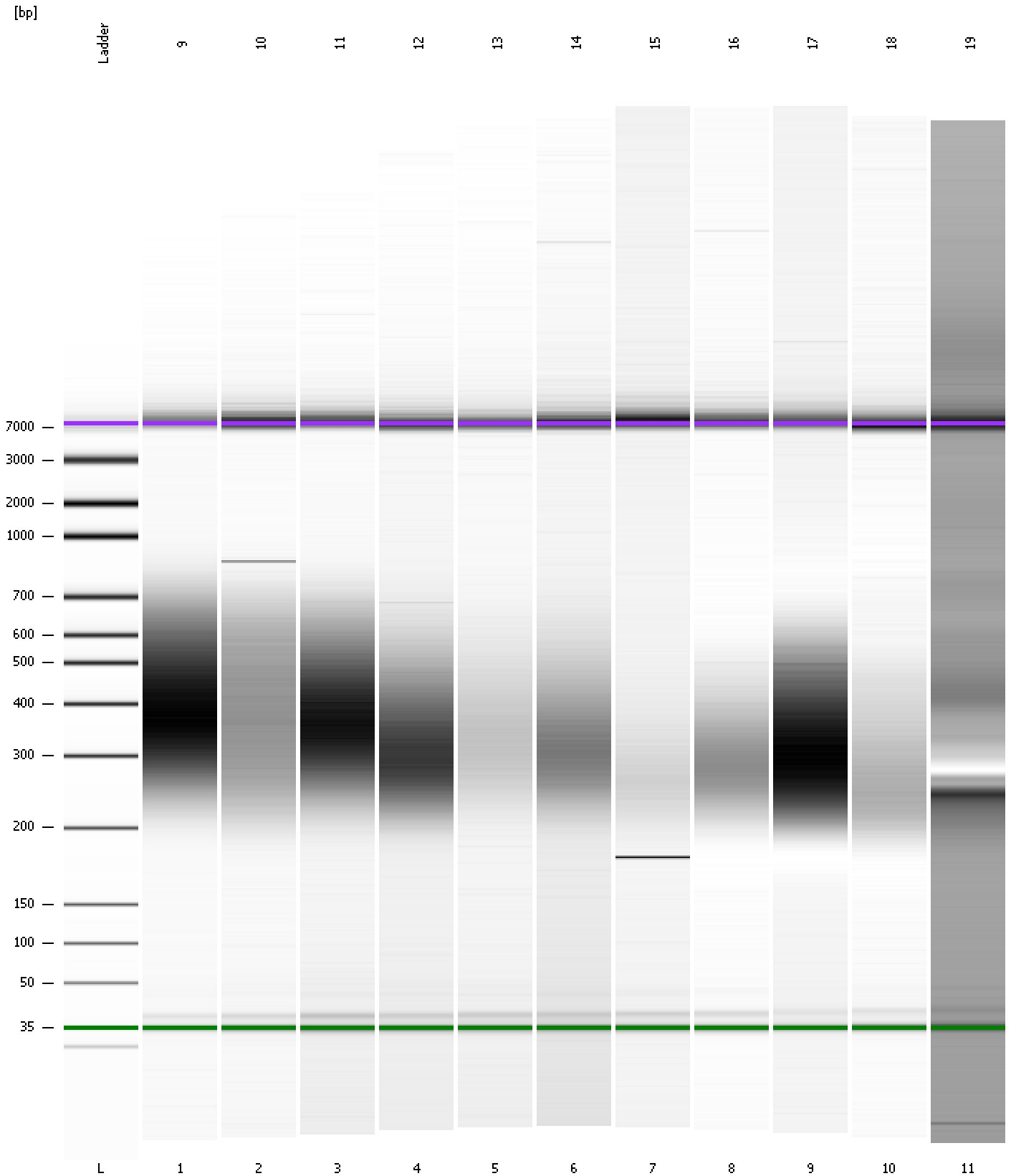
**Region table for sample 11 : 19**

| From [bp] | Molarity [pmol/l] | Average Size [bp] | Conc. [pg/μl] | To [bp] | Corr. Area | % of Total | Size distribution in CV [%] | Color |
|-----------|-------------------|-------------------|---------------|---------|------------|------------|-----------------------------|-------|
| 200       | 2,190.7           | 392               | 431.88        | 1,000   | 54.8       | 59         | 48.3                        | Blue  |

Assay Class: High Sensitivity DNA Assay  
Data Path: C:\...ents and Settings\Bioanalyzer\2012-02-17\2012-02-17\_003.xad

Created: 2/17/2012 11:15:55 AM  
Modified: 2/17/2012 11:57:16 AM

**Gel Image**





Assay Class: High Sensitivity DNA Assay  
 Data Path: C:\...ents and Settings\Bioanalyzer\2012-02-17\2012-02-17\_003.xad

Created: 2/17/2012 11:15:55 AM  
 Modified: 2/17/2012 11:57:16 AM

**Run Logbook**

| Description   | Number | Source     | Category | Sub Category | Time                  | Time Zone                           | User     | Host     |
|---|--------|------------|----------|--------------|-----------------------|-------------------------------------|----------|----------|
| Run ended on port 1 (Number of wells acquired: 12)  |        | Instrument | Run      |              | 2/17/2012 11:57:12 AM | (GMT --08:00) Pacific Standard Time | UC Davis | D8XSMGH1 |
| Run started on port 1 (File: C:\Documents and Settings\Bioanalyzer\2012-02-17\2012-02-17_003.xad) |        | Instrument | Run      |              | 2/17/2012 11:16:00 AM | (GMT --08:00) Pacific Standard Time | UC Davis | D8XSMGH1 |
| Product Number : G2938B   |        | Instrument | Run      |              | 2/17/2012 11:16:00 AM | (GMT --08:00) Pacific Standard Time | UC Davis | D8XSMGH1 |
| Name :  |        | Instrument | Run      |              | 2/17/2012 11:16:00 AM | (GMT --08:00) Pacific Standard Time | UC Davis | D8XSMGH1 |
| Vendor : Agilent Technologies   |        | Instrument | Run      |              | 2/17/2012 11:16:00 AM | (GMT --08:00) Pacific Standard Time | UC Davis | D8XSMGH1 |
| Serial# : DE13701086  |        | Instrument | Run      |              | 2/17/2012 11:16:00 AM | (GMT --08:00) Pacific Standard Time | UC Davis | D8XSMGH1 |
| Firmware : C.01.069   |        | Instrument | Run      |              | 2/17/2012 11:16:00 AM | (GMT --08:00) Pacific Standard Time | UC Davis | D8XSMGH1 |
| Cartridge : Electrode   |        | Instrument | Run      |              | 2/17/2012 11:16:00 AM | (GMT --08:00) Pacific Standard Time | UC Davis | D8XSMGH1 |