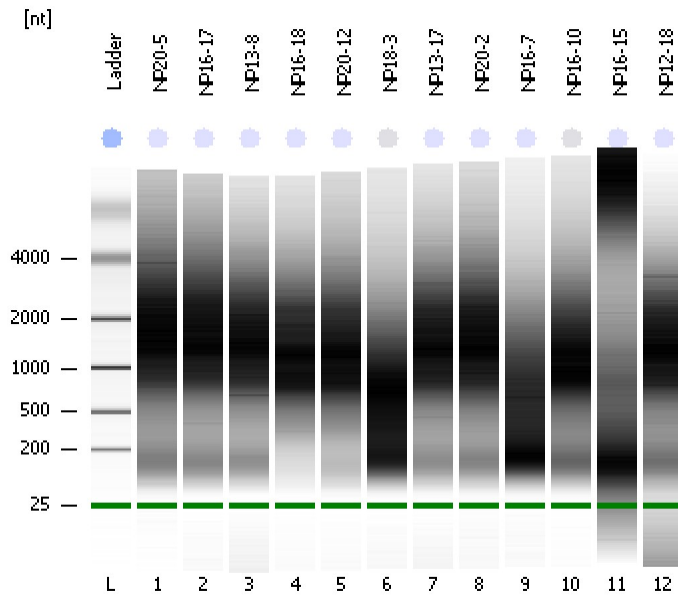


Assay Class: Eukaryote Total RNA Nano
Data Path: C:\...ents and Settings\Bioanalyzer\2012-02-17\2012-02-17_006.xad

Created: 2/17/2012 1:52:26 PM
Modified: 2/17/2012 2:27:42 PM

Electrophoresis File Run Summary



Instrument Information:

Instrument Name: DE13701086 Firmware: C.01.069
Serial#: DE13701086 Type: G2938B

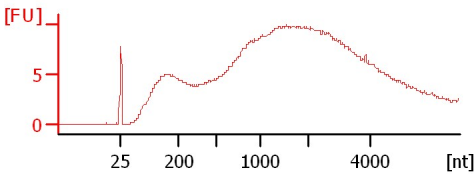
Assay Information:

Assay Origin Path: C:\Program Files\Agilent\2100 bioanalyzer\2100 expert\assays\RNA\Eukaryote Total RNA Nano Series II.xsy
Assay Class: Eukaryote Total RNA Nano
Version: 2.6
Assay Comments: Total RNA Analysis ng sensitivity (Eukaryote)
© Copyright 2003 - 2009 Agilent Technologies, Inc.

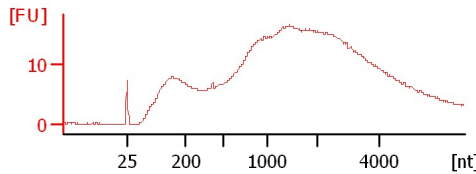
Chip Information:

Chip Lot #:
Reagent Kit Lot #:
Chip Comments:

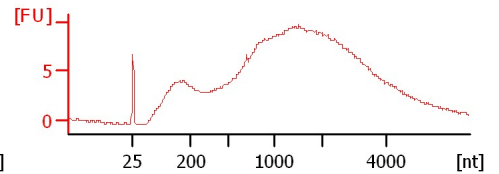
NP20-5
RIN: 2.80



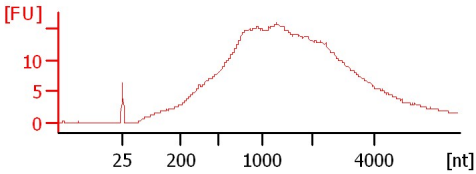
NP16-17
RIN: 2.40



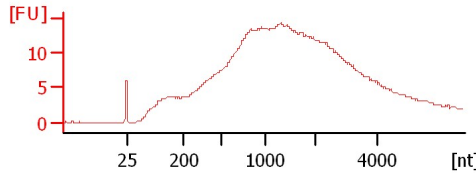
NP13-8
RIN: 2.80



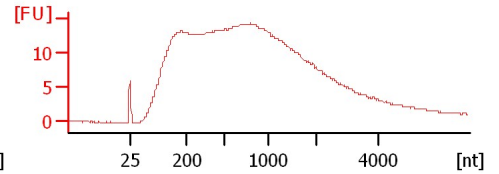
NP16-18
RIN: 2.20



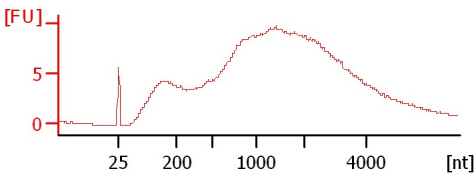
NP20-12
RIN: 2.30



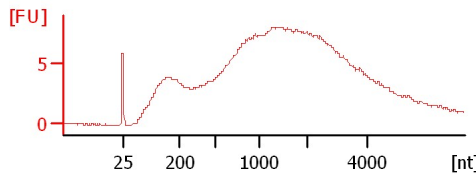
NP18-3
RIN N/A



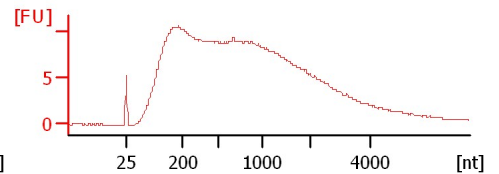
NP13-17
RIN: 2.80



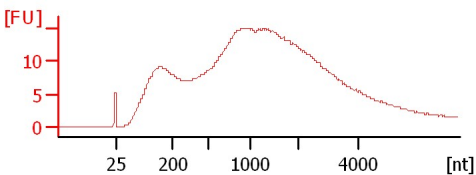
NP20-2
RIN: 1.90



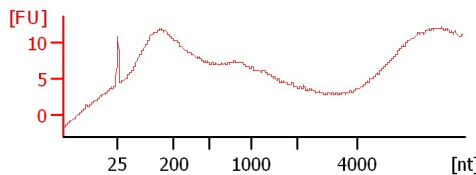
NP16-7
RIN: 2.20



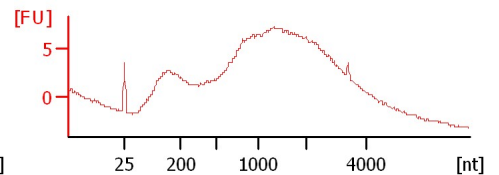
NP16-10
RIN N/A



NP16-15
RIN: 2.10



NP12-18
RIN: 2.40



Assay Class: Eukaryote Total RNA Nano
 Data Path: C:\...ents and Settings\Bioanalyzer\2012-02-17\2012-02-17_006.xad

Created: 2/17/2012 1:52:26 PM
 Modified: 2/17/2012 2:27:42 PM

Electrophoresis File Run Summary (Chip Summary)

Sample Name	Sample Comment	Status	Result Label	Result Color
NP20-5		✓	RIN: 2.80	
NP16-17		✓	RIN: 2.40	
NP13-8		✓	RIN: 2.80	
NP16-18		✓	RIN: 2.20	
NP20-12		✓	RIN: 2.30	
NP18-3		✓	RIN N/A	
NP13-17		✓	RIN: 2.80	
NP20-2		✓	RIN: 1.90	
NP16-7		✓	RIN: 2.20	
NP16-10		✓	RIN N/A	
NP16-15		✓	RIN: 2.10	
NP12-18		✓	RIN: 2.40	
Ladder		✓	All Other Samples	

Chip Lot #

Reagent Kit Lot #

Chip Comments :

Assay Class: Eukaryote Total RNA Nano
Data Path: C:\...ents and Settings\Bioanalyzer\2012-02-17\2012-02-17_006.xad

Created: 2/17/2012 1:52:26 PM
Modified: 2/17/2012 2:27:42 PM

Electrophoresis Assay Details

General Analysis Settings

Number of Available Sample and Ladder Wells (Max.) : 13
Minimum Visible Range [s] : 17
Maximum Visible Range [s] : 70
Start Analysis Time Range [s] : 19
End Analysis Time Range [s] : 69
Ladder Concentration [ng/μl] : 150
Lower Marker Concentration [ng/μl] : 0
Upper Marker Concentration [ng/μl] : 0
Used Lower Marker for Quantitation
Standard Curve Fit is Logarithmic
Show Data Aligned to Lower Marker

Integrator Settings

Integration Start Time [s] : 19
Integration End Time [s] : 69
Slope Threshold : 0.6
Height Threshold [FU] : 0.5
Area Threshold : 0.2
Width Threshold [s] : 0.01
Baseline Plateau [s] : 6

Filter Settings

Filter Width [s] : 0.5
Polynomial Order : 4

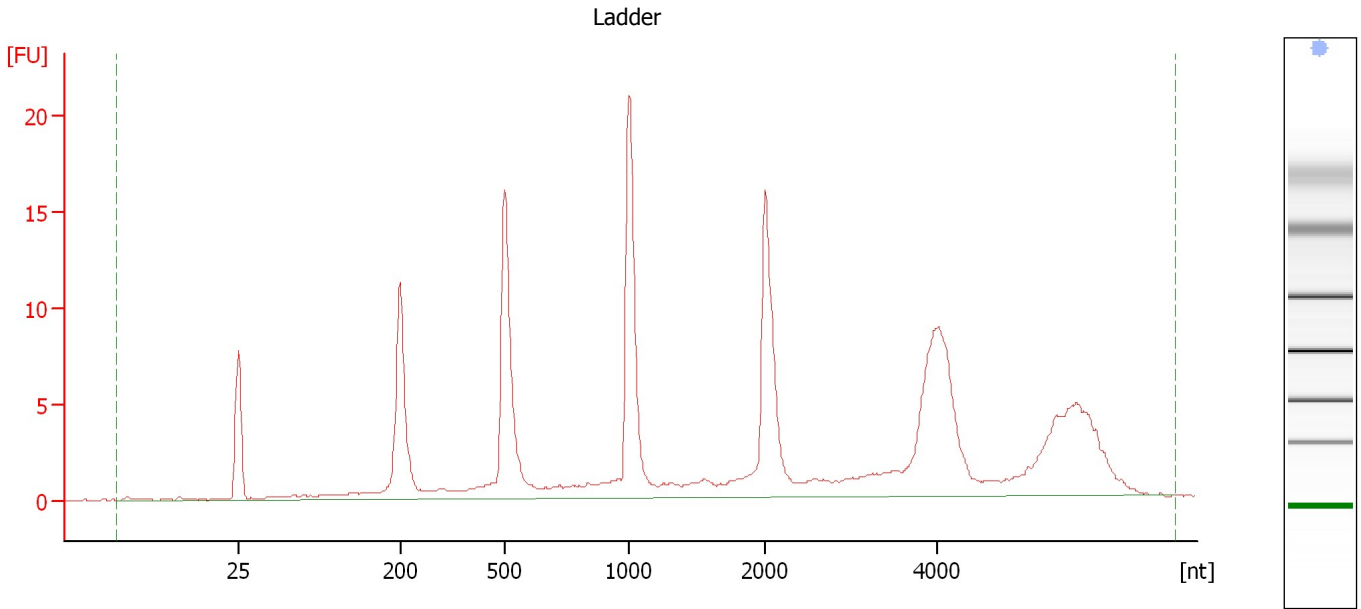
Ladder

Ladder Peak	Size
1	25
2	200
3	500
4	1000
5	2000
6	4000

Assay Class: Eukaryote Total RNA Nano
Data Path: C:\...ents and Settings\Bioanalyzer\2012-02-17\2012-02-17_006.xad

Created: 2/17/2012 1:52:26 PM
Modified: 2/17/2012 2:27:42 PM

Electropherogram Summary



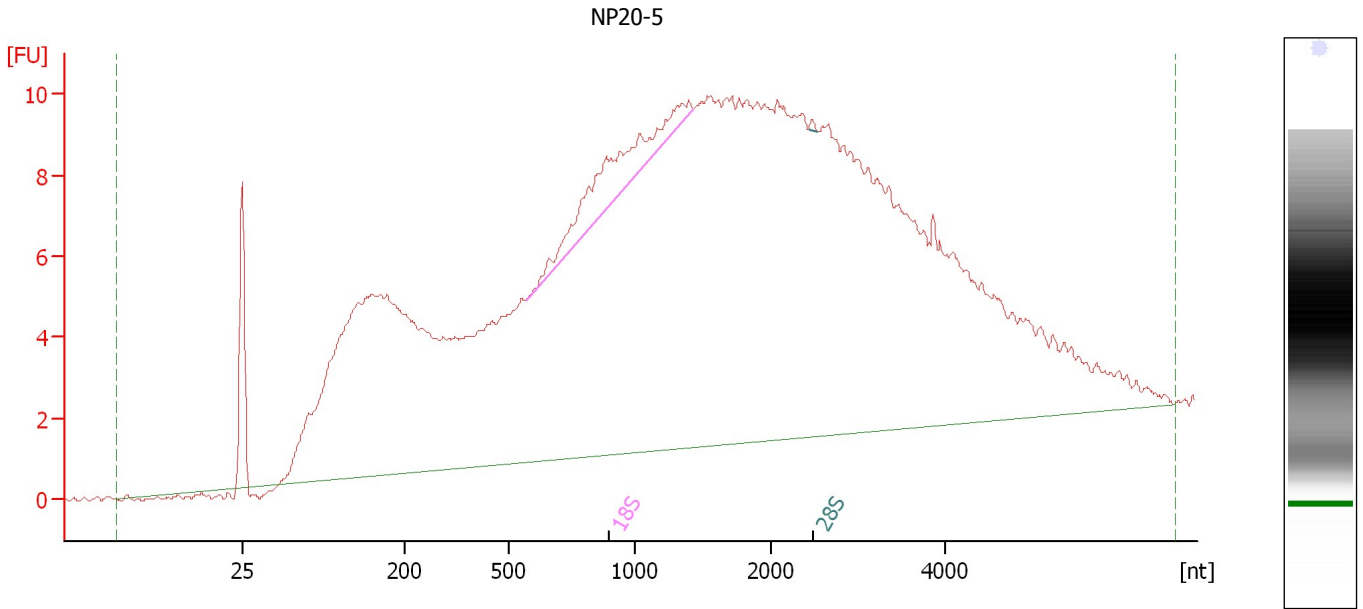
Overall Results for Ladder

RNA Area:	167.5	Result Flagging Color:	
RNA Concentration:	150 ng/μl	Result Flagging Label:	All Other Samples

Assay Class: Eukaryote Total RNA Nano
Data Path: C:\...ents and Settings\Bioanalyzer\2012-02-17\2012-02-17_006.xad

Created: 2/17/2012 1:52:26 PM
Modified: 2/17/2012 2:27:42 PM

Electropherogram Summary Continued ...



Overall Results for sample 1 : NP20-5

RNA Area:	430.4	RNA Integrity Number (RIN):	2.8 (B.02.08, Anomaly Threshold(s) manually adapted)
RNA Concentration:	385 ng/μl	Result Flagging Color:	
rRNA Ratio [28s / 18s]:	0.0	Result Flagging Label:	RIN: 2.80

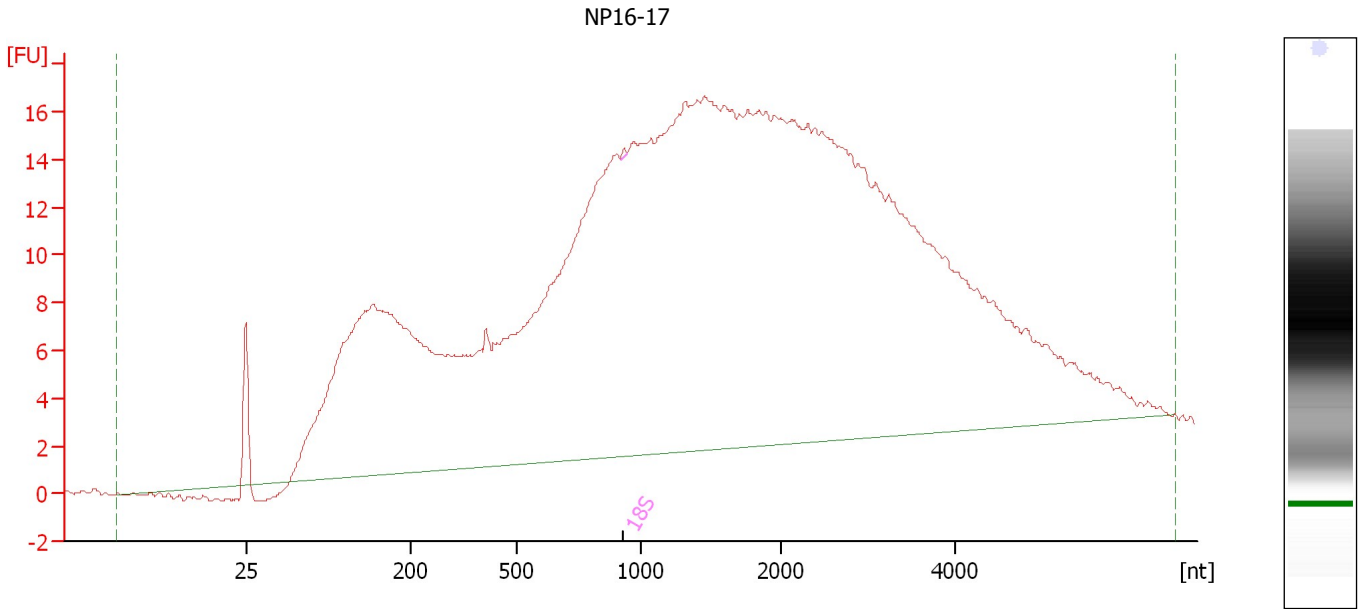
Fragment table for sample 1 : NP20-5

Name	Start Size [nt]	End Size [nt]	Area	% of total Area
18S	566	1,425	10.6	2.5
28S	2,420	2,531	0.1	0.0

Assay Class: Eukaryote Total RNA Nano
Data Path: C:\...ents and Settings\Bioanalyzer\2012-02-17\2012-02-17_006.xad

Created: 2/17/2012 1:52:26 PM
Modified: 2/17/2012 2:27:42 PM

Electropherogram Summary Continued ...



Overall Results for sample 2 : NP16-17

RNA Area:	695.5	RNA Integrity Number (RIN):	2.4 (B.02.08, Anomaly Threshold(s) manually adapted)
RNA Concentration:	623 ng/μl	Result Flagging Color:	
rRNA Ratio [28s / 18s]:	0.0	Result Flagging Label:	RIN: 2.40

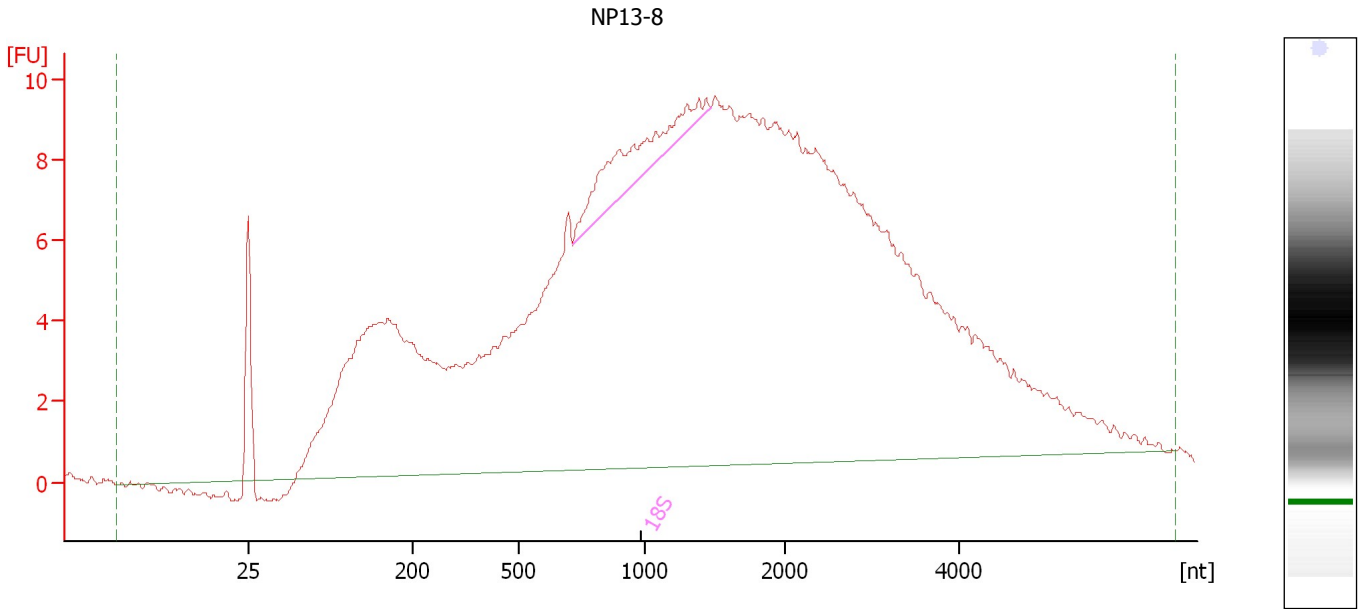
Fragment table for sample 2 : NP16-17

Name	Start Size [nt]	End Size [nt]	Area	% of total Area
18S	914	940	0.1	0.0

Assay Class: Eukaryote Total RNA Nano
Data Path: C:\...ents and Settings\Bioanalyzer\2012-02-17\2012-02-17_006.xad

Created: 2/17/2012 1:52:26 PM
Modified: 2/17/2012 2:27:42 PM

Electropherogram Summary Continued ...



Overall Results for sample 3 : NP13-8

RNA Area:	402.7	RNA Integrity Number (RIN):	2.8 (B.02.08, Anomaly Threshold(s) manually adapted)
RNA Concentration:	361 ng/μl	Result Flagging Color:	
rRNA Ratio [28s / 18s]:	0.0	Result Flagging Label:	RIN: 2.80

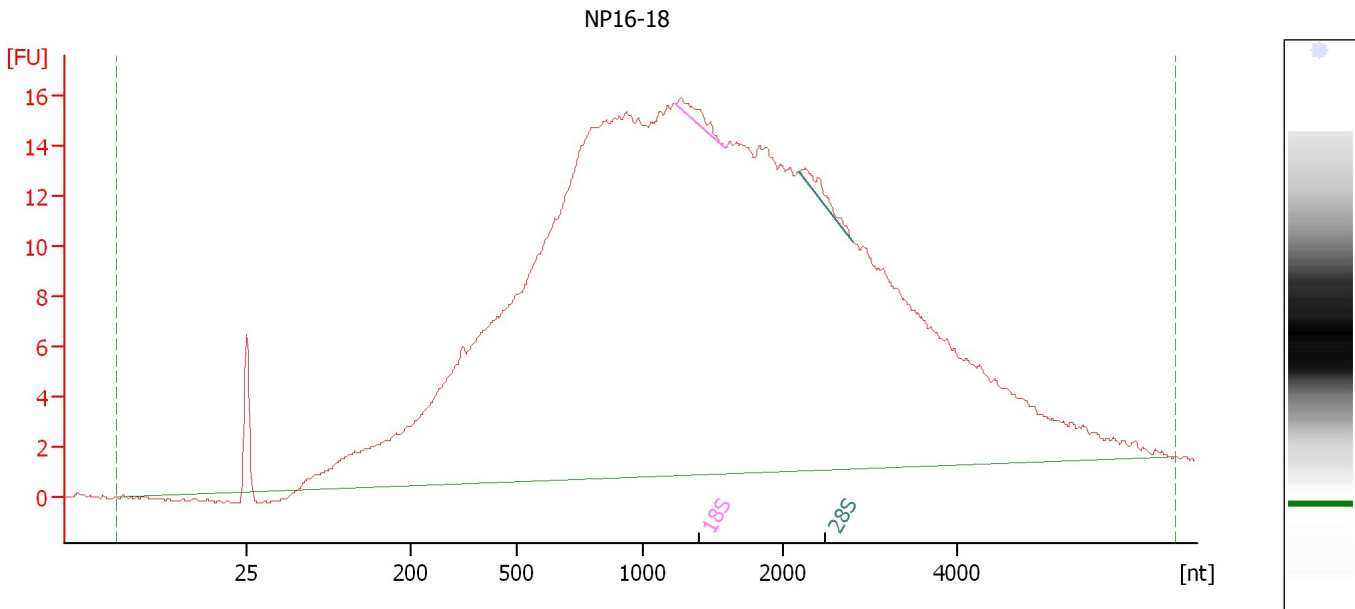
Fragment table for sample 3 : NP13-8

Name	Start Size [nt]	End Size [nt]	Area	% of total Area
18S	711	1,468	10.4	2.6

Assay Class: Eukaryote Total RNA Nano
 Data Path: C:\...ents and Settings\Bioanalyzer\2012-02-17\2012-02-17_006.xad

Created: 2/17/2012 1:52:26 PM
 Modified: 2/17/2012 2:27:42 PM

Electropherogram Summary Continued ...



Overall Results for sample 4 : NP16-18

RNA Area:	606.0	RNA Integrity Number (RIN):	2.2 (B.02.08, Anomaly Threshold(s) manually adapted)
RNA Concentration:	543 ng/μl	Result Flagging Color:	
rRNA Ratio [28s / 18s]:	1.2	Result Flagging Label:	RIN: 2.20

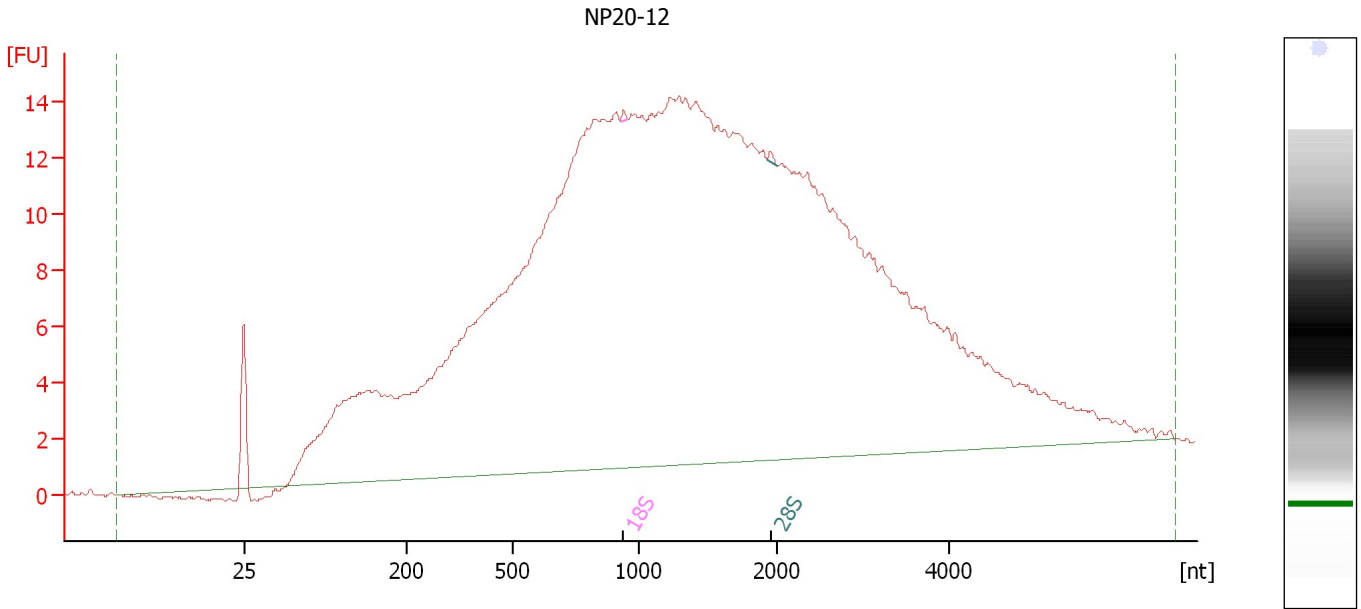
Fragment table for sample 4 : NP16-18

Name	Start Size [nt]	End Size [nt]	Area	% of total Area
18S	1,232	1,586	1.6	0.3
28S	2,185	2,796	2.0	0.3

Assay Class: Eukaryote Total RNA Nano
 Data Path: C:\...ents and Settings\Bioanalyzer\2012-02-17\2012-02-17_006.xad

Created: 2/17/2012 1:52:26 PM
 Modified: 2/17/2012 2:27:42 PM

Electropherogram Summary Continued ...



Overall Results for sample 5 : NP20-12

RNA Area:	568.4	RNA Integrity Number (RIN):	2.3 (B.02.08, Anomaly Threshold(s) manually adapted)
RNA Concentration:	509 ng/μl	Result Flagging Color:	
rRNA Ratio [28s / 18s]:	1.1	Result Flagging Label:	RIN: 2.30

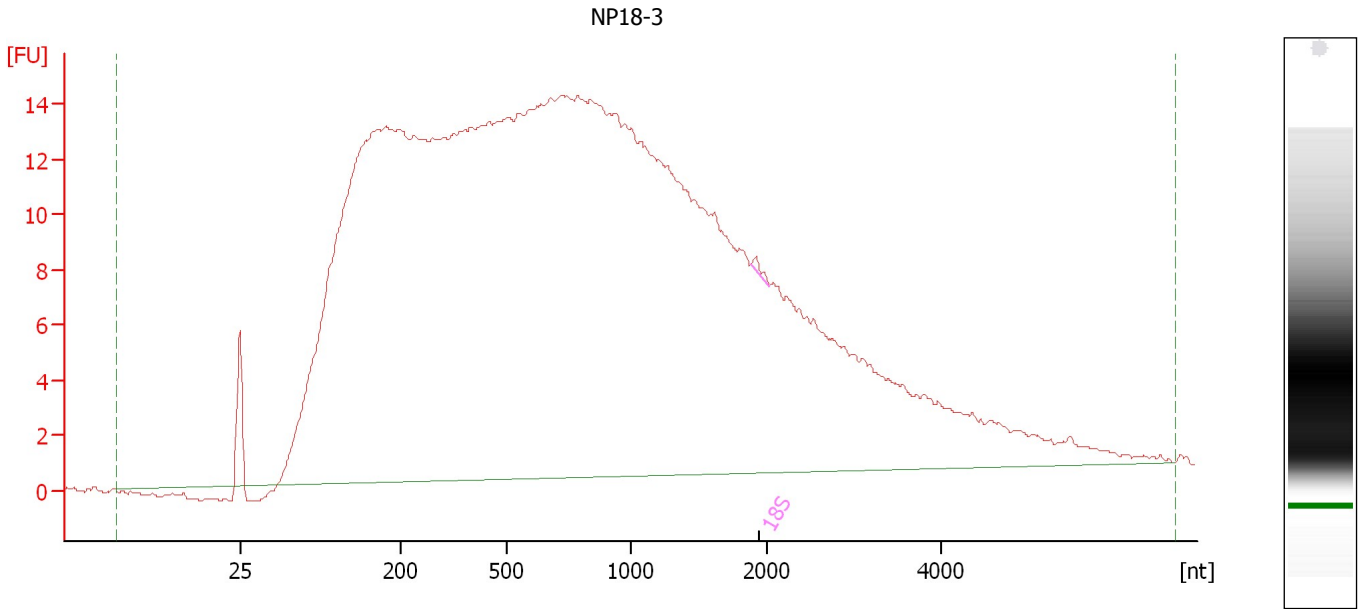
Fragment table for sample 5 : NP20-12

Name	Start Size [nt]	End Size [nt]	Area	% of total Area
18S	929	958	0.1	0.0
28S	1,938	2,001	0.2	0.0

Assay Class: Eukaryote Total RNA Nano
Data Path: C:\...ents and Settings\Bioanalyzer\2012-02-17\2012-02-17_006.xad

Created: 2/17/2012 1:52:26 PM
Modified: 2/17/2012 2:27:42 PM

Electropherogram Summary Continued ...



Overall Results for sample 6 : NP18-3

RNA Area: 739.0 Result Flagging Color:
RNA Concentration: 662 ng/μl Result Flagging Label: RIN N/A
rRNA Ratio [28s / 18s]: 0.0

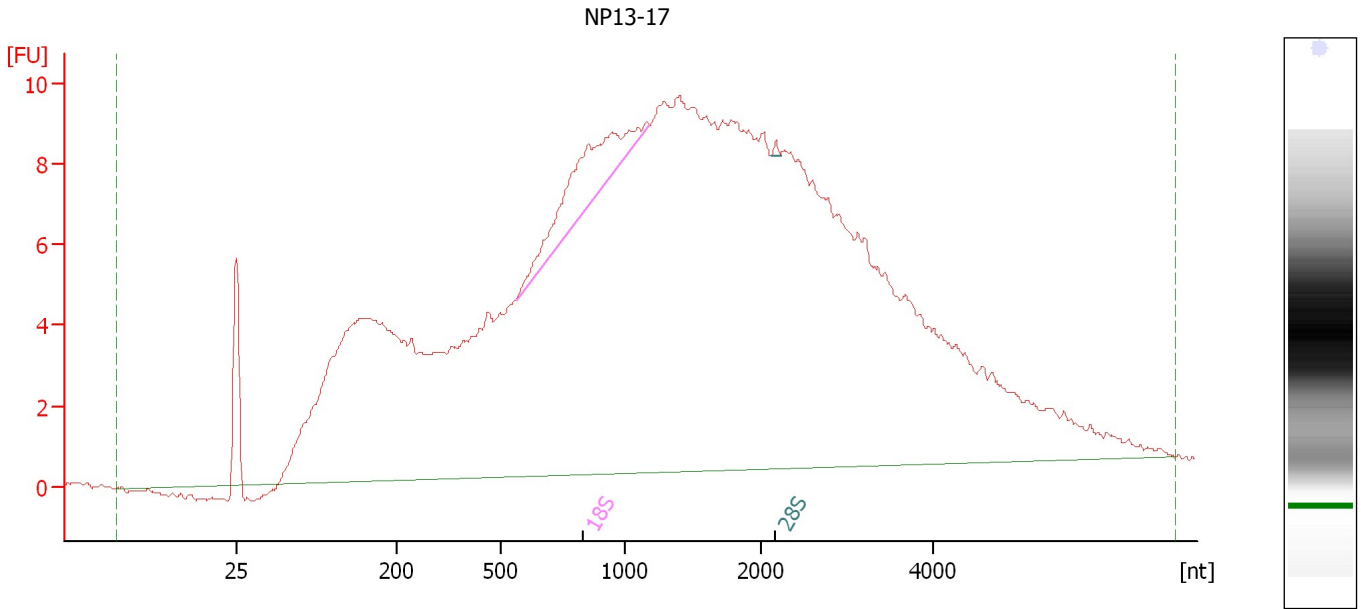
Fragment table for sample 6 : NP18-3

Name	Start Size [nt]	End Size [nt]	Area	% of total Area
18S	1,875	2,025	0.4	0.1

Assay Class: Eukaryote Total RNA Nano
Data Path: C:\...ents and Settings\Bioanalyzer\2012-02-17\2012-02-17_006.xad

Created: 2/17/2012 1:52:26 PM
Modified: 2/17/2012 2:27:42 PM

Electropherogram Summary Continued ...



Overall Results for sample 7 : NP13-17

RNA Area:	425.7	RNA Integrity Number (RIN):	2.8 (B.02.08, Anomaly Threshold(s) manually adapted)
RNA Concentration:	381 ng/μl		
rRNA Ratio [28s / 18s]:	0.0	Result Flagging Color:	
		Result Flagging Label:	RIN: 2.80

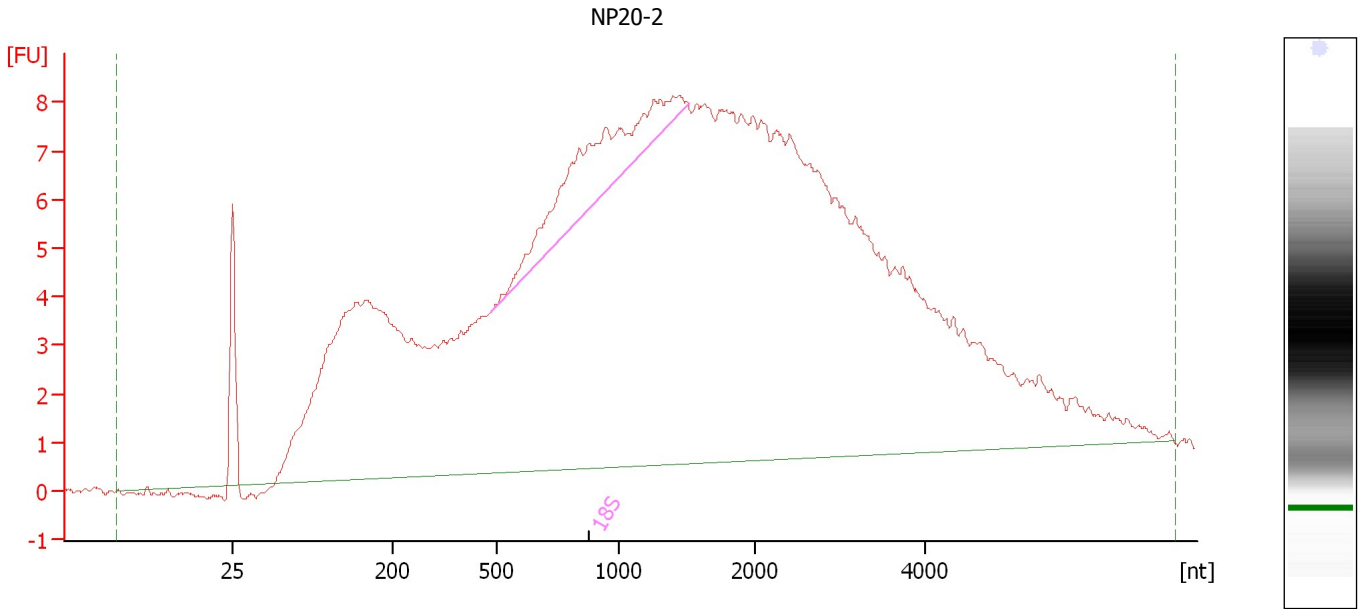
Fragment table for sample 7 : NP13-17

Name	Start Size [nt]	End Size [nt]	Area	% of total Area
18S	560	1,176	11.2	2.6
28S	2,111	2,223	0.2	0.0

Assay Class: Eukaryote Total RNA Nano
Data Path: C:\...ents and Settings\Bioanalyzer\2012-02-17\2012-02-17_006.xad

Created: 2/17/2012 1:52:26 PM
Modified: 2/17/2012 2:27:42 PM

Electropherogram Summary Continued ...



Overall Results for sample 8 : NP20-2

RNA Area:	366.3	RNA Integrity Number (RIN):	1.9 (B.02.08, Anomaly Threshold(s) manually adapted)
RNA Concentration:	328 ng/μl	Result Flagging Color:	
rRNA Ratio [28s / 18s]:	0.0	Result Flagging Label:	RIN: 1.90

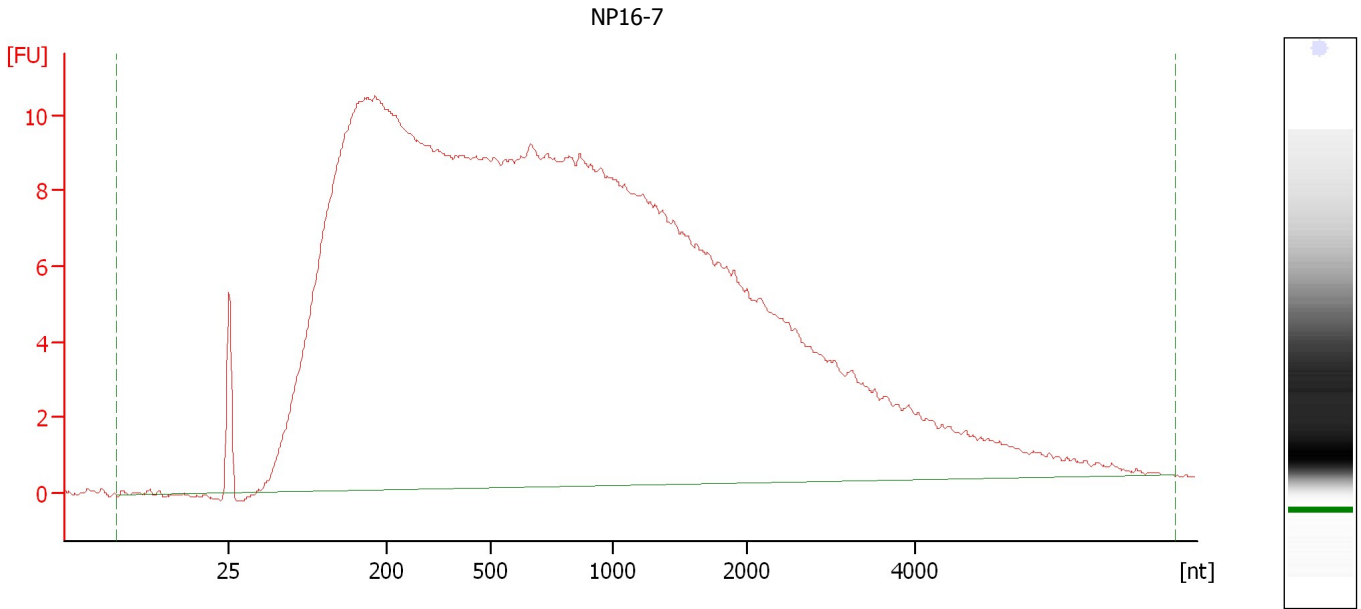
Fragment table for sample 8 : NP20-2

Name	Start Size [nt]	End Size [nt]	Area	% of total Area
18S	482	1,509	15.9	4.3

Assay Class: Eukaryote Total RNA Nano
Data Path: C:\...ents and Settings\Bioanalyzer\2012-02-17\2012-02-17_006.xad

Created: 2/17/2012 1:52:26 PM
Modified: 2/17/2012 2:27:42 PM

Electropherogram Summary Continued ...



Overall Results for sample 9 : NP16-7

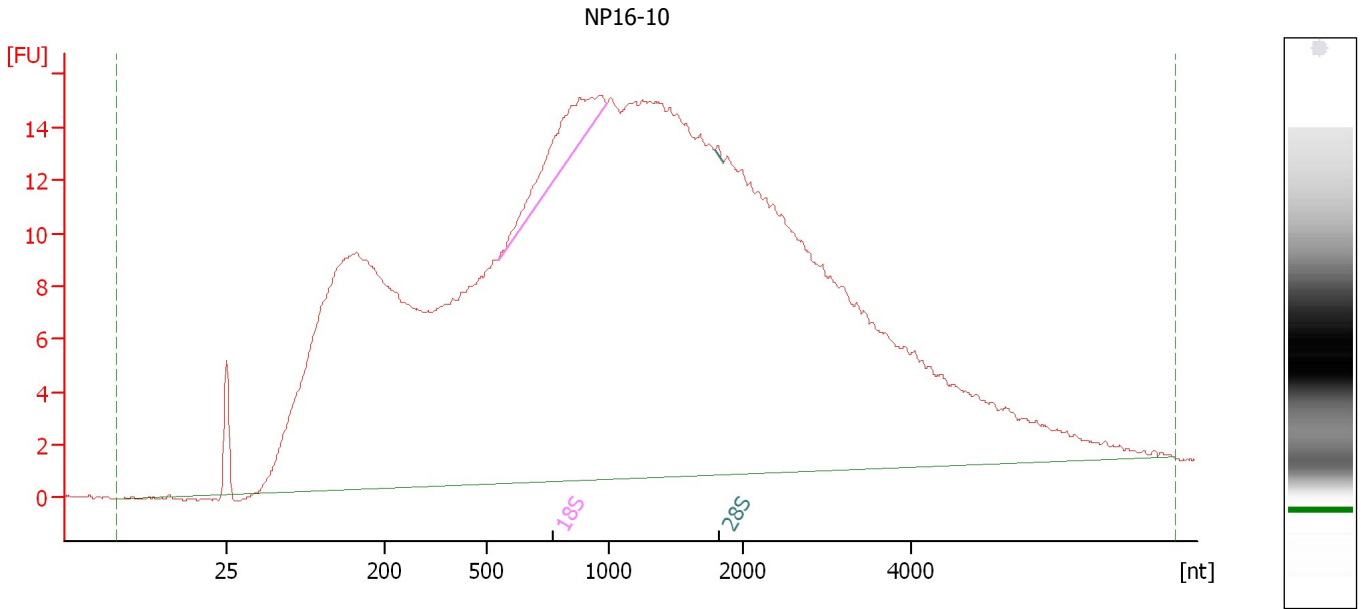
RNA Area: 529.6
RNA Concentration: 474 ng/μl
rRNA Ratio [28s / 18s]: 0.0

RNA Integrity Number (RIN): 2.2 (B.02.08, Anomaly Threshold(s) manually adapted)
Result Flagging Color:
Result Flagging Label: RIN: 2.20

Assay Class: Eukaryote Total RNA Nano
Data Path: C:\...ents and Settings\Bioanalyzer\2012-02-17\2012-02-17_006.xad

Created: 2/17/2012 1:52:26 PM
Modified: 2/17/2012 2:27:42 PM

Electropherogram Summary Continued ...



Overall Results for sample 10 : NP16-10

RNA Area: 713.6 Result Flagging Color:
RNA Concentration: 639 ng/μl Result Flagging Label: RIN N/A
rRNA Ratio [28s / 18s]: 0.0

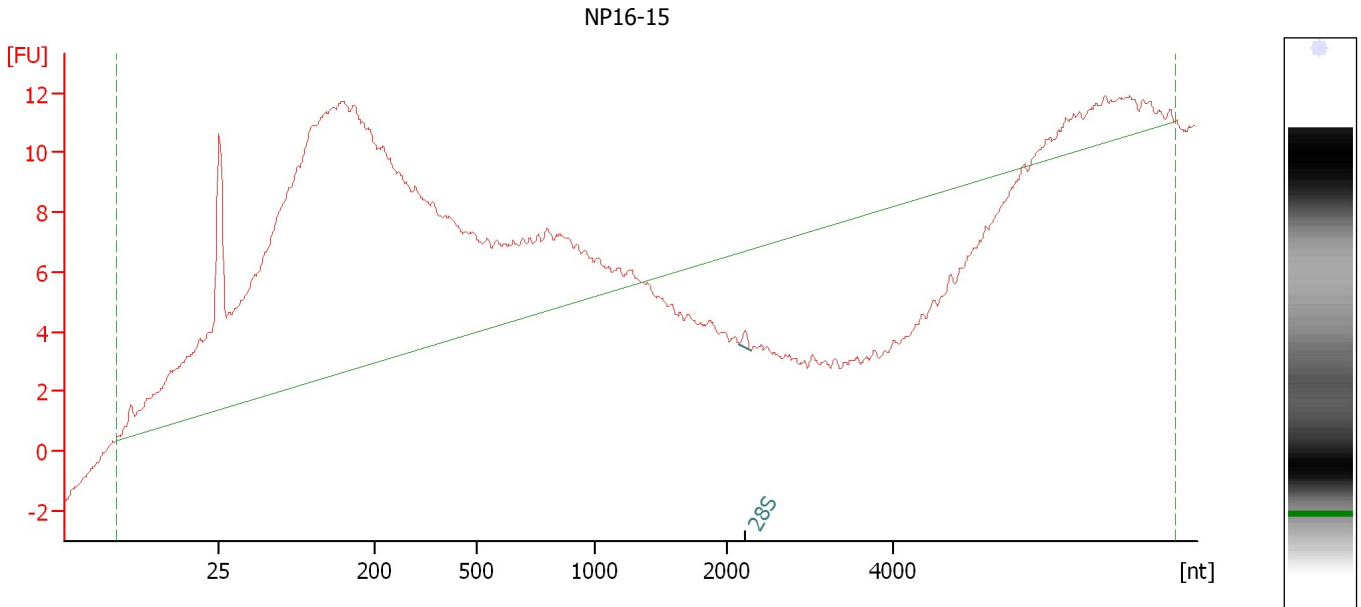
Fragment table for sample 10 : NP16-10

Name	Start Size [nt]	End Size [nt]	Area	% of total Area
18S	545	991	12.2	1.7
28S	1,798	1,854	0.2	0.0

Assay Class: Eukaryote Total RNA Nano
 Data Path: C:\...ents and Settings\Bioanalyzer\2012-02-17\2012-02-17_006.xad

Created: 2/17/2012 1:52:26 PM
 Modified: 2/17/2012 2:27:42 PM

Electropherogram Summary Continued ...



Overall Results for sample 11 : NP16-15

RNA Area:	276.9	RNA Integrity Number (RIN):	2.1 (B.02.08, Anomaly Threshold(s) manually adapted)
RNA Concentration:	248 ng/μl	Result Flagging Color:	
rRNA Ratio [28s / 18s]:	0.0	Result Flagging Label:	RIN: 2.10

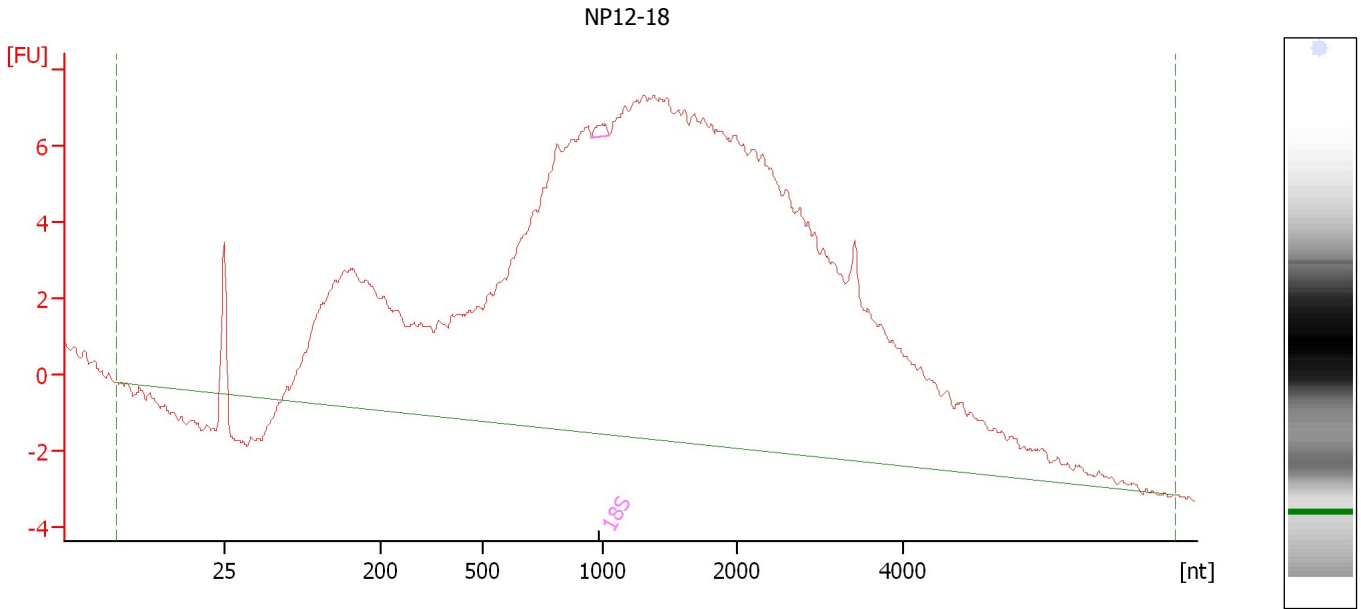
Fragment table for sample 11 : NP16-15

Name	Start Size [nt]	End Size [nt]	Area	% of total Area
28S	2,149	2,278	0.3	0.1

Assay Class: Eukaryote Total RNA Nano
Data Path: C:\...ents and Settings\Bioanalyzer\2012-02-17\2012-02-17_006.xad

Created: 2/17/2012 1:52:26 PM
Modified: 2/17/2012 2:27:42 PM

Electropherogram Summary Continued ...



Overall Results for sample 12 : NP12-18

RNA Area:	381.5	RNA Integrity Number (RIN):	2.4 (B.02.08, Anomaly Threshold(s) manually adapted)
RNA Concentration:	342 ng/μl	Result Flagging Color:	
rRNA Ratio [28s / 18s]:	0.0	Result Flagging Label:	RIN: 2.40

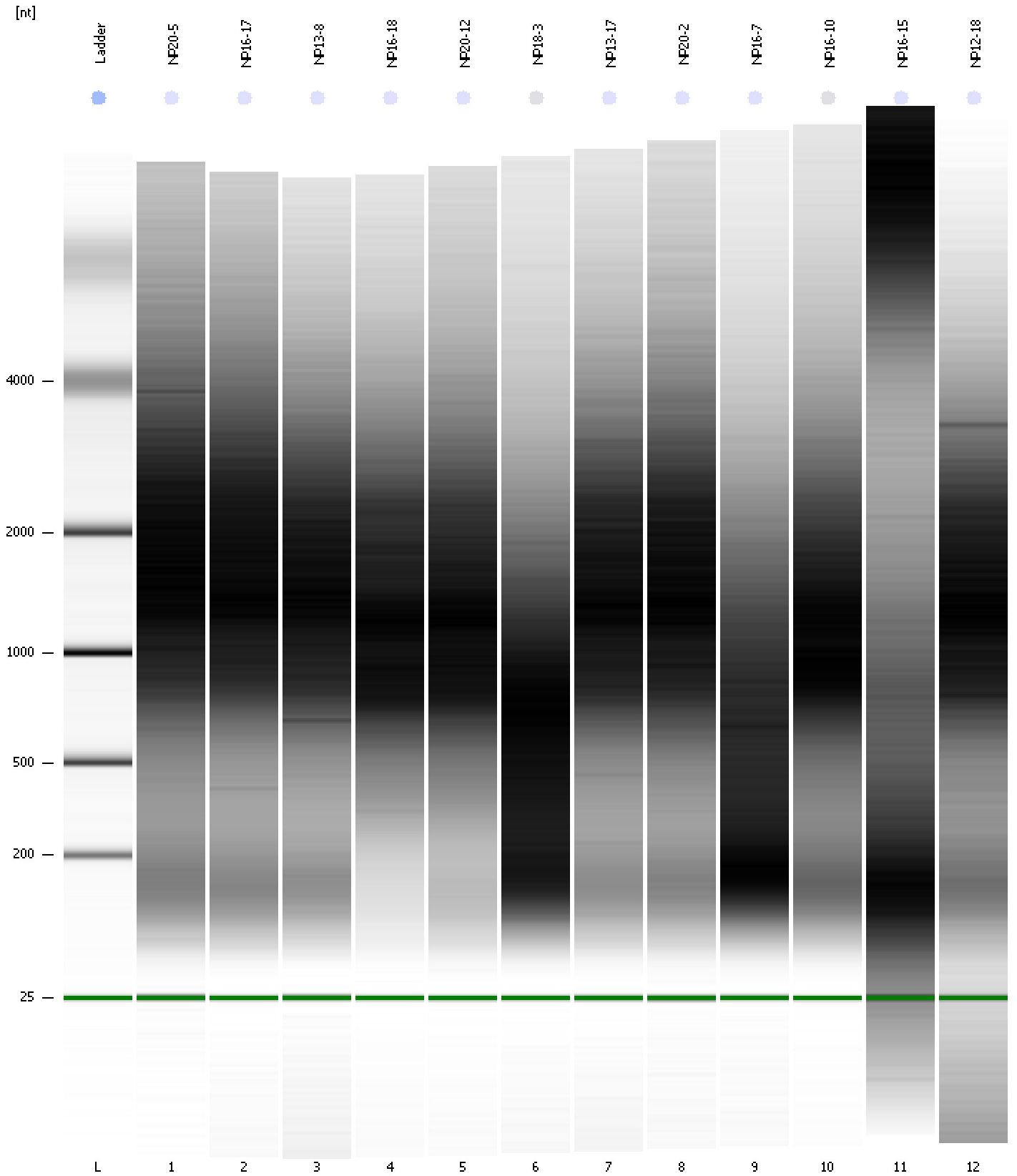
Fragment table for sample 12 : NP12-18

Name	Start Size [nt]	End Size [nt]	Area	% of total Area
18S	951	1,049	0.4	0.1

Assay Class: Eukaryote Total RNA Nano
Data Path: C:\...ents and Settings\Bioanalyzer\2012-02-17\2012-02-17_006.xad

Created: 2/17/2012 1:52:26 PM
Modified: 2/17/2012 2:27:42 PM

Gel Image



Assay Class: Eukaryote Total RNA Nano
 Data Path: C:\...ents and Settings\Bioanalyzer\2012-02-17\2012-02-17_006.xad

Created: 2/17/2012 1:52:26 PM
 Modified: 2/17/2012 2:27:42 PM

Run Logbook

Description	Number	Source	Category	Sub Category	Time	Time Zone	User	Host
Run ended on port 1 (Number of wells acquired: 13)		Instrument	Run		2/17/2012 2:15:31 PM	(GMT --08:00) Pacific Standard Time	UC Davis	D8XSMGH1
Run started on port 1 (File: C:\Documents and Settings\Bioanalyzer\2012-02-17\2012-02-17_006.xad)		Instrument	Run		2/17/2012 1:52:33 PM	(GMT --08:00) Pacific Standard Time	UC Davis	D8XSMGH1
Product Number : G2938B		Instrument	Run		2/17/2012 1:52:33 PM	(GMT --08:00) Pacific Standard Time	UC Davis	D8XSMGH1
Name :		Instrument	Run		2/17/2012 1:52:33 PM	(GMT --08:00) Pacific Standard Time	UC Davis	D8XSMGH1
Vendor : Agilent Technologies		Instrument	Run		2/17/2012 1:52:33 PM	(GMT --08:00) Pacific Standard Time	UC Davis	D8XSMGH1
Serial# : DE13701086		Instrument	Run		2/17/2012 1:52:33 PM	(GMT --08:00) Pacific Standard Time	UC Davis	D8XSMGH1
Firmware : C.01.069		Instrument	Run		2/17/2012 1:52:33 PM	(GMT --08:00) Pacific Standard Time	UC Davis	D8XSMGH1
Cartridge : Electrode		Instrument	Run		2/17/2012 1:52:33 PM	(GMT --08:00) Pacific Standard Time	UC Davis	D8XSMGH1