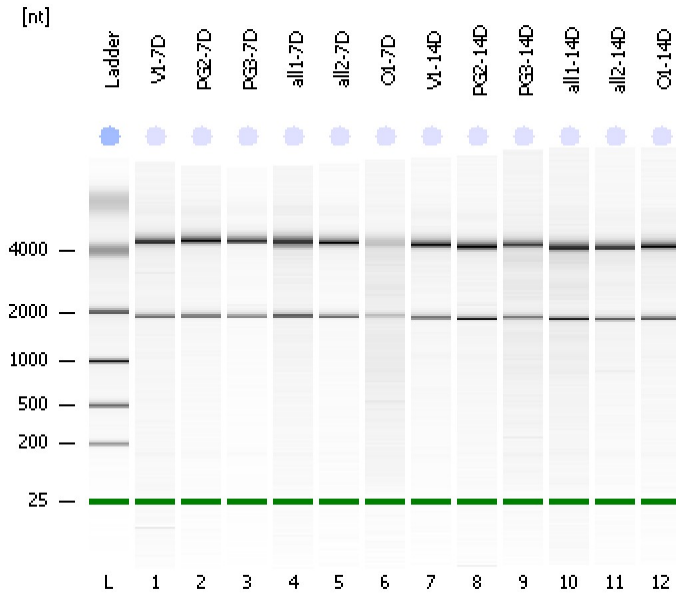


Assay Class: Eukaryote Total RNA Nano
Data Path: C:\...ents and Settings\Bioanalyzer\2012-02-17\2012-02-17_008.xad

Created: 2/17/2012 2:59:10 PM
Modified: 2/17/2012 3:22:58 PM

Electrophoresis File Run Summary



Instrument Information:

Instrument Name: DE13701086 Firmware: C.01.069
Serial#: DE13701086 Type: G2938B

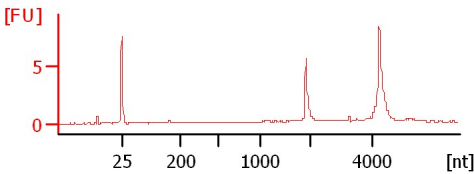
Assay Information:

Assay Origin Path: C:\Program Files\Agilent\2100 bioanalyzer\2100 expert\assays\RNA\Eukaryote Total RNA Nano Series II.xsy
Assay Class: Eukaryote Total RNA Nano
Version: 2.6
Assay Comments: Total RNA Analysis ng sensitivity (Eukaryote)
© Copyright 2003 - 2009 Agilent Technologies, Inc.

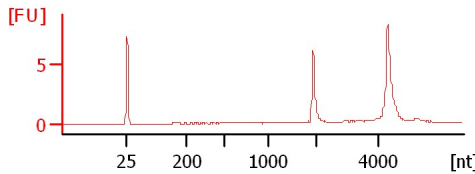
Chip Information:

Chip Lot #:
Reagent Kit Lot #:
Chip Comments:

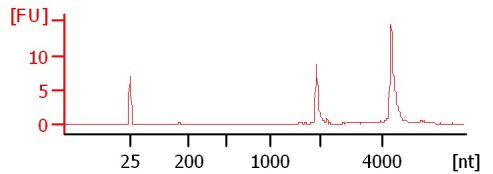
V1-7D
RIN: 9.50



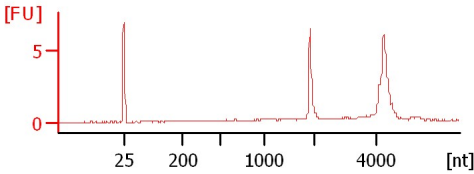
PG2-7D
RIN: 9.90



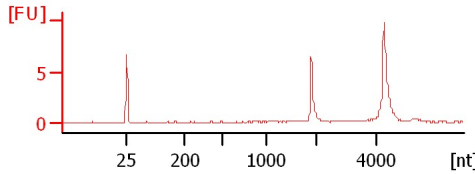
PG3-7D
RIN: 10



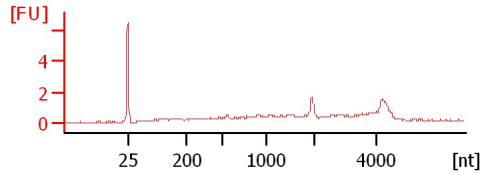
all1-7D
RIN: 9.50



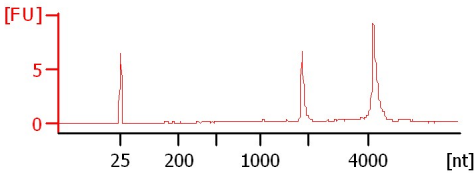
all2-7D
RIN: 9.80



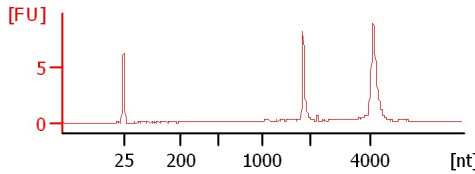
O1-7D
RIN: 6.90



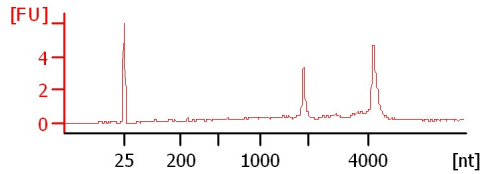
V1-14D
RIN: 9.50



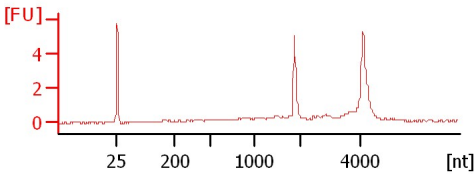
PG2-14D
RIN: 9.20



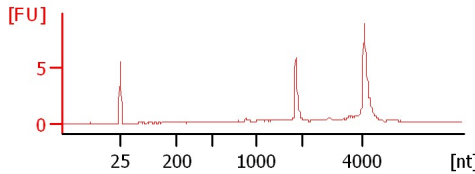
PG3-14D
RIN: 7.90



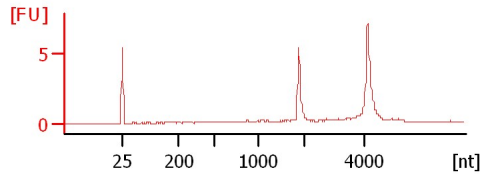
all1-14D
RIN: 8.40



all2-14D
RIN: 8.80



O1-14D
RIN: 9.10



Assay Class: Eukaryote Total RNA Nano
 Data Path: C:\...ents and Settings\Bioanalyzer\2012-02-17\2012-02-17_008.xad

Created: 2/17/2012 2:59:10 PM
 Modified: 2/17/2012 3:22:58 PM

Electrophoresis File Run Summary (Chip Summary)

Sample Name	Sample Comment	Status	Result Label	Result Color
V1-7D		✓	RIN: 9.50	
PG2-7D		✓	RIN: 9.90	
PG3-7D		✓	RIN:10	
all1-7D		✓	RIN: 9.50	
all2-7D		✓	RIN: 9.80	
O1-7D		✓	RIN: 6.90	
V1-14D		✓	RIN: 9.50	
PG2-14D		✓	RIN: 9.20	
PG3-14D		✓	RIN: 7.90	
all1-14D		✓	RIN: 8.40	
all2-14D		✓	RIN: 8.80	
O1-14D		✓	RIN: 9.10	
Ladder		✓	All Other Samples	

Chip Lot #

Reagent Kit Lot #

Chip Comments :

Assay Class: Eukaryote Total RNA Nano
Data Path: C:\...ents and Settings\Bioanalyzer\2012-02-17\2012-02-17_008.xad

Created: 2/17/2012 2:59:10 PM
Modified: 2/17/2012 3:22:58 PM

Electrophoresis Assay Details

General Analysis Settings

Number of Available Sample and Ladder Wells (Max.) : 13
Minimum Visible Range [s] : 17
Maximum Visible Range [s] : 70
Start Analysis Time Range [s] : 19
End Analysis Time Range [s] : 69
Ladder Concentration [ng/ μ l] : 150
Lower Marker Concentration [ng/ μ l] : 0
Upper Marker Concentration [ng/ μ l] : 0
Used Lower Marker for Quantitation
Standard Curve Fit is Logarithmic
Show Data Aligned to Lower Marker

Integrator Settings

Integration Start Time [s] : 19
Integration End Time [s] : 69
Slope Threshold : 0.6
Height Threshold [FU] : 0.5
Area Threshold : 0.2
Width Threshold [s] : 0.5
Baseline Plateau [s] : 6

Filter Settings

Filter Width [s] : 0.5
Polynomial Order : 4

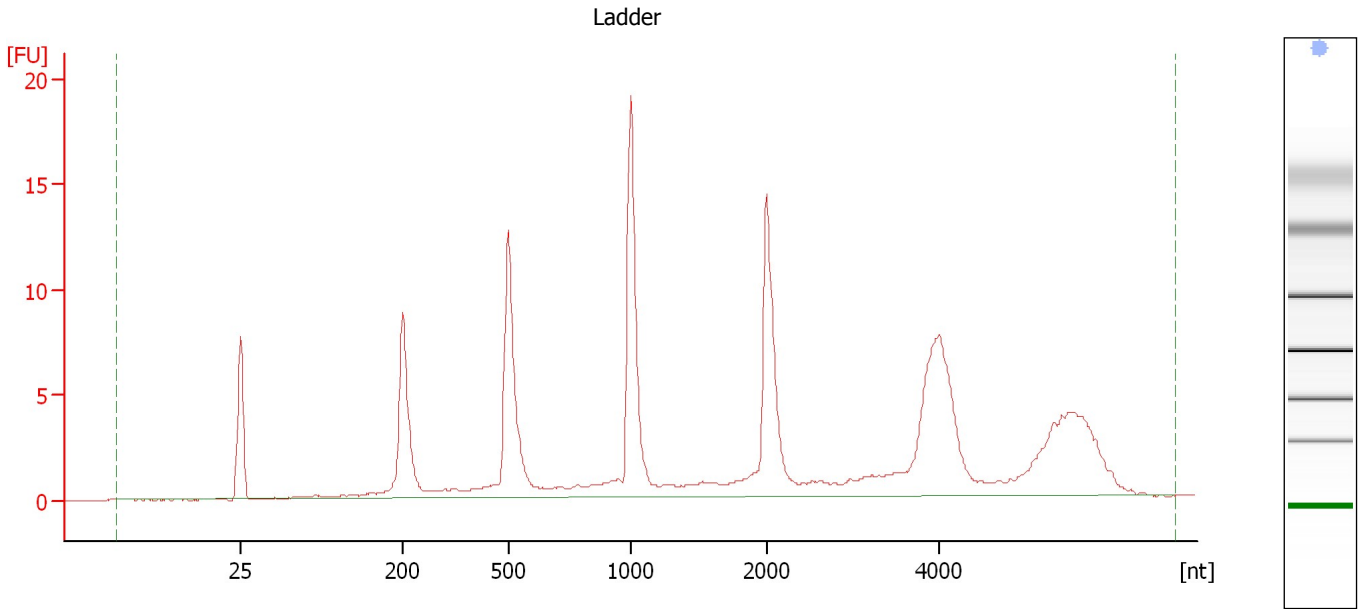
Ladder

Ladder Peak	Size
1	25
2	200
3	500
4	1000
5	2000
6	4000

Assay Class: Eukaryote Total RNA Nano
Data Path: C:\...ents and Settings\Bioanalyzer\2012-02-17\2012-02-17_008.xad

Created: 2/17/2012 2:59:10 PM
Modified: 2/17/2012 3:22:58 PM

Electropherogram Summary



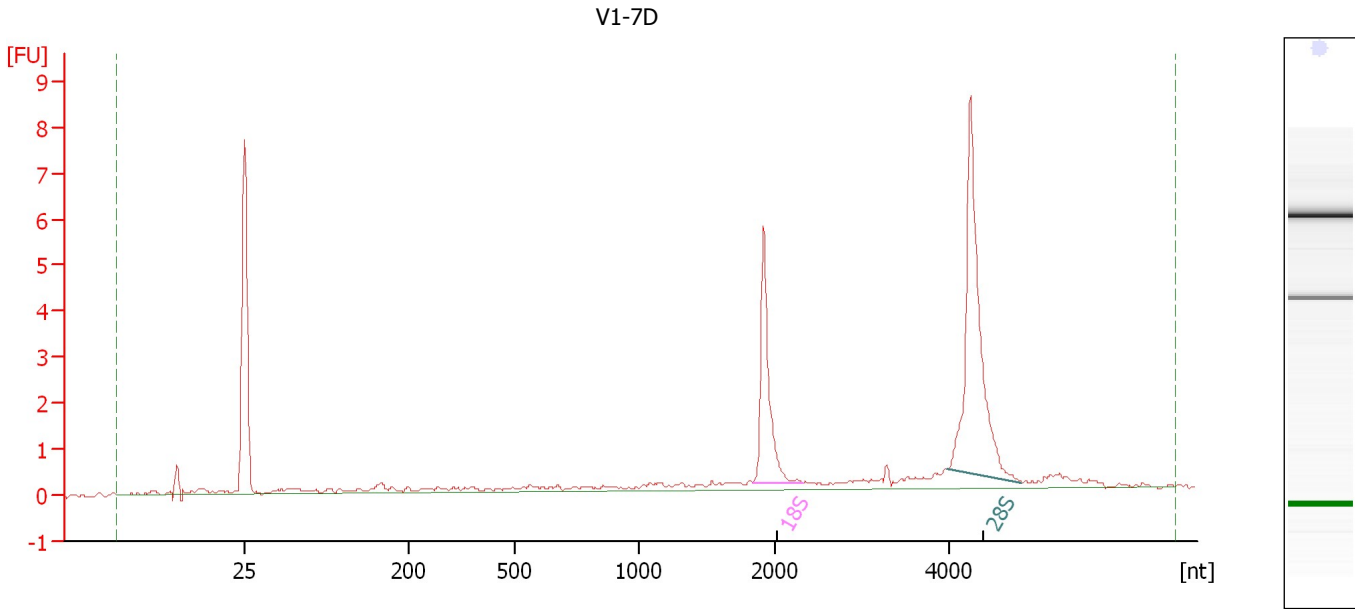
Overall Results for Ladder

RNA Area:	138.9	Result Flagging Color:	
RNA Concentration:	150 ng/ μ l	Result Flagging Label:	All Other Samples

Assay Class: Eukaryote Total RNA Nano
Data Path: C:\...ents and Settings\Bioanalyzer\2012-02-17\2012-02-17_008.xad

Created: 2/17/2012 2:59:10 PM
Modified: 2/17/2012 3:22:58 PM

Electropherogram Summary Continued ...



Overall Results for sample 1 : V1-7D

RNA Area:	25.2	RNA Integrity Number (RIN):	9.5 (B.02.08, Anomaly Threshold(s) manually adapted)
RNA Concentration:	27 ng/μl	Result Flagging Color:	
rRNA Ratio [28s / 18s]:	2.0	Result Flagging Label:	RIN: 9.50

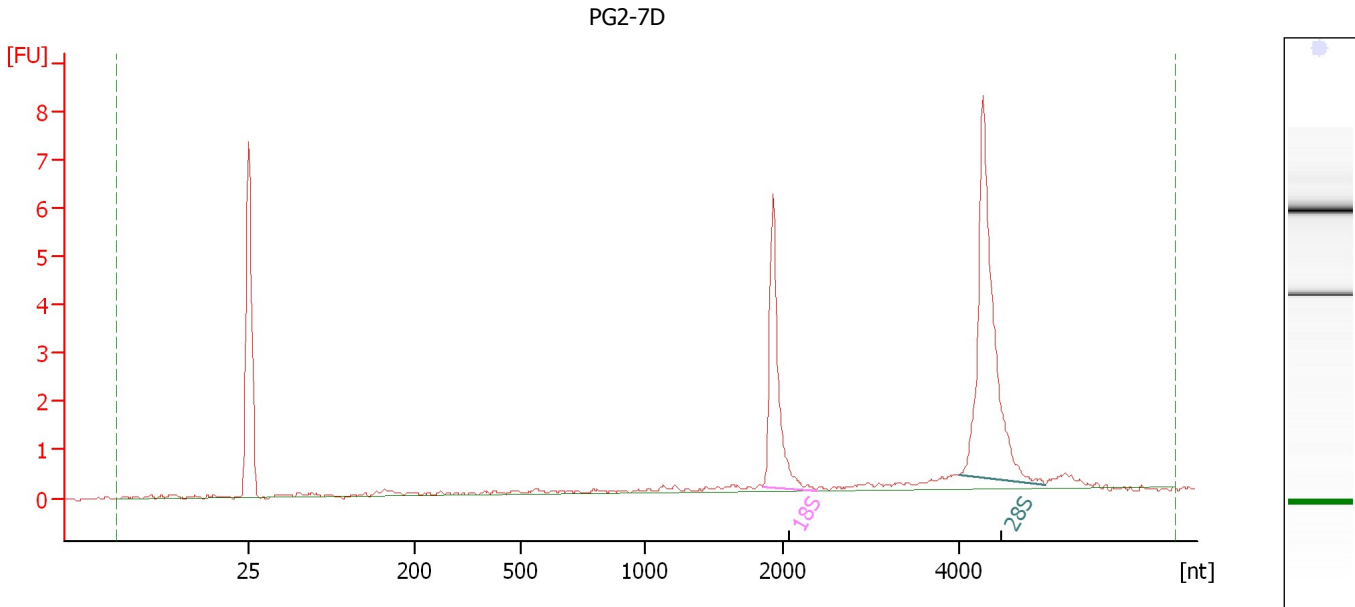
Fragment table for sample 1 : V1-7D

Name	Start Size [nt]	End Size [nt]	Area	% of total Area
18S	1,836	2,321	4.9	19.6
28S	3,985	4,848	9.9	39.4

Assay Class: Eukaryote Total RNA Nano
 Data Path: C:\...ents and Settings\Bioanalyzer\2012-02-17\2012-02-17_008.xad

Created: 2/17/2012 2:59:10 PM
 Modified: 2/17/2012 3:22:58 PM

Electropherogram Summary Continued ...



Overall Results for sample 2 : PG2-7D

RNA Area:	23.1	RNA Integrity Number (RIN):	9.9 (B.02.08, Anomaly Threshold(s) manually adapted)
RNA Concentration:	25 ng/μl	Result Flagging Color:	
rRNA Ratio [28s / 18s]:	2.0	Result Flagging Label:	RIN: 9.90

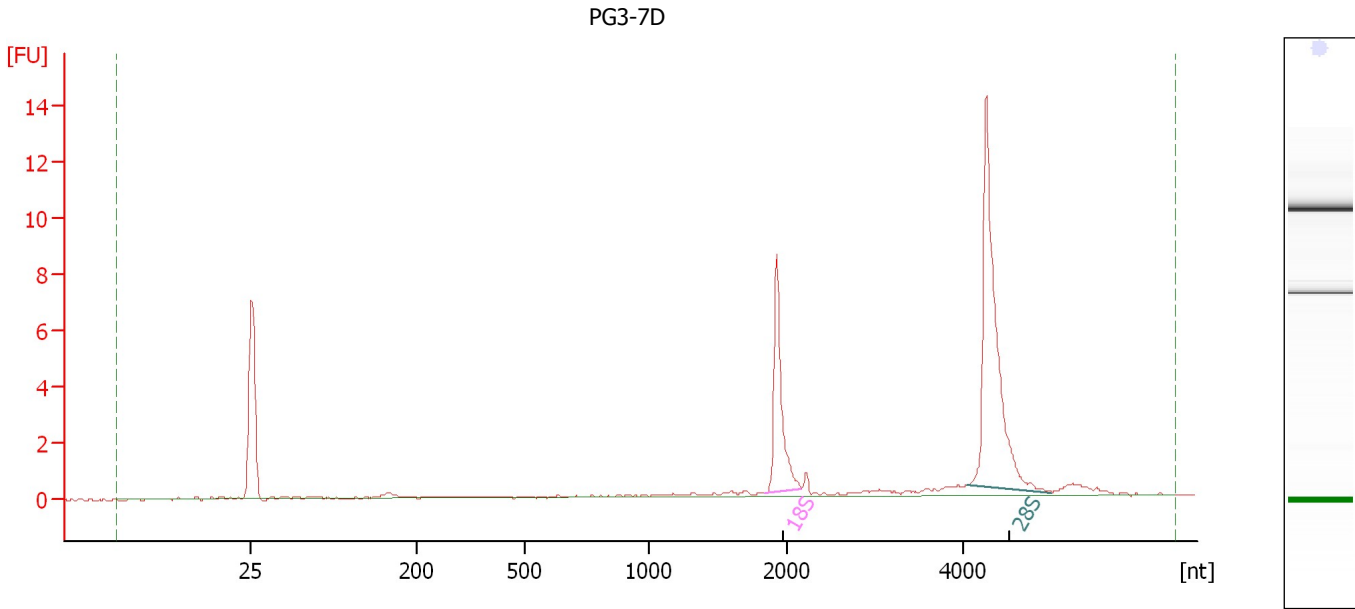
Fragment table for sample 2 : PG2-7D

Name	Start Size [nt]	End Size [nt]	Area	% of total Area
18S	1,846	2,381	5.4	23.3
28S	4,008	4,998	10.6	46.0

Assay Class: Eukaryote Total RNA Nano
Data Path: C:\...ents and Settings\Bioanalyzer\2012-02-17\2012-02-17_008.xad

Created: 2/17/2012 2:59:10 PM
Modified: 2/17/2012 3:22:58 PM

Electropherogram Summary Continued ...



Overall Results for sample 3 : PG3-7D

RNA Area: 29.9 RNA Integrity Number (RIN): 10 (B.02.08, Anomaly Threshold(s) manually adapted)
RNA Concentration: 32 ng/μl
rRNA Ratio [28s / 18s]: 2.3
Result Flagging Color:
Result Flagging Label: RIN:10

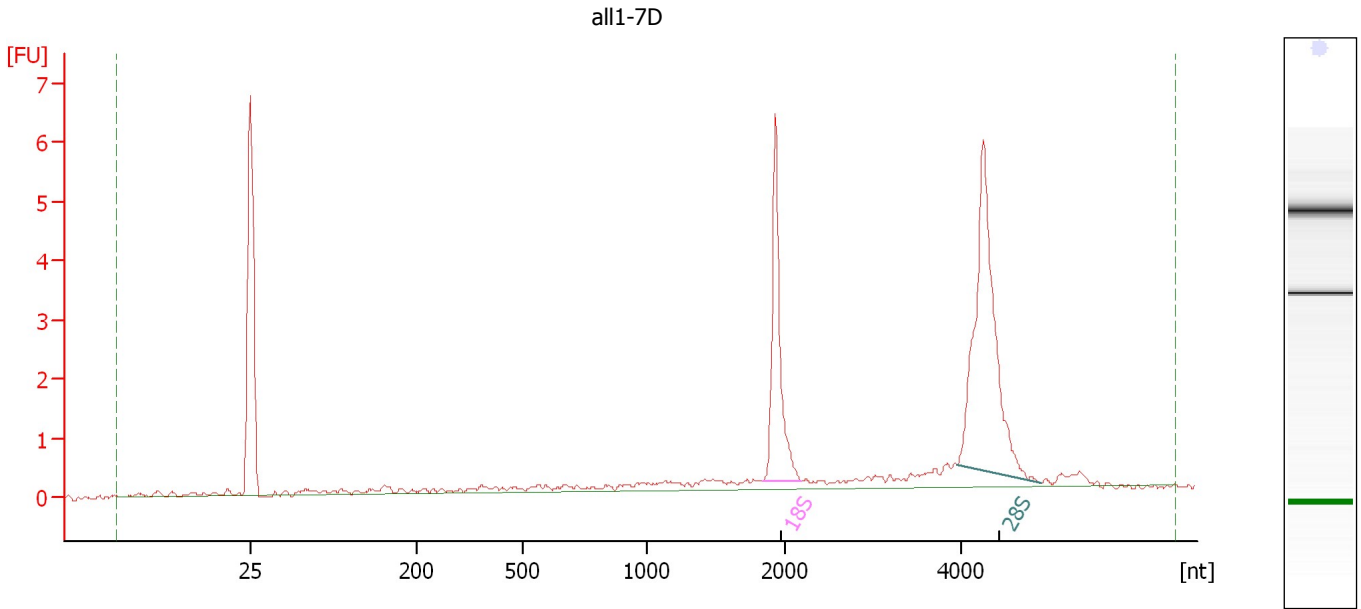
Fragment table for sample 3 : PG3-7D

Name	Start Size [nt]	End Size [nt]	Area	% of total Area
18S	1,839	2,161	6.9	23.0
28S	4,049	5,012	15.5	51.7

Assay Class: Eukaryote Total RNA Nano
Data Path: C:\...ents and Settings\Bioanalyzer\2012-02-17\2012-02-17_008.xad

Created: 2/17/2012 2:59:10 PM
Modified: 2/17/2012 3:22:58 PM

Electropherogram Summary Continued ...



Overall Results for sample 4 : all1-7D

RNA Area:	24.0	RNA Integrity Number (RIN):	9.5 (B.02.08, Anomaly Threshold(s) manually adapted)
RNA Concentration:	26 ng/μl	Result Flagging Color:	
rRNA Ratio [28s / 18s]:	1.9	Result Flagging Label:	RIN: 9.50

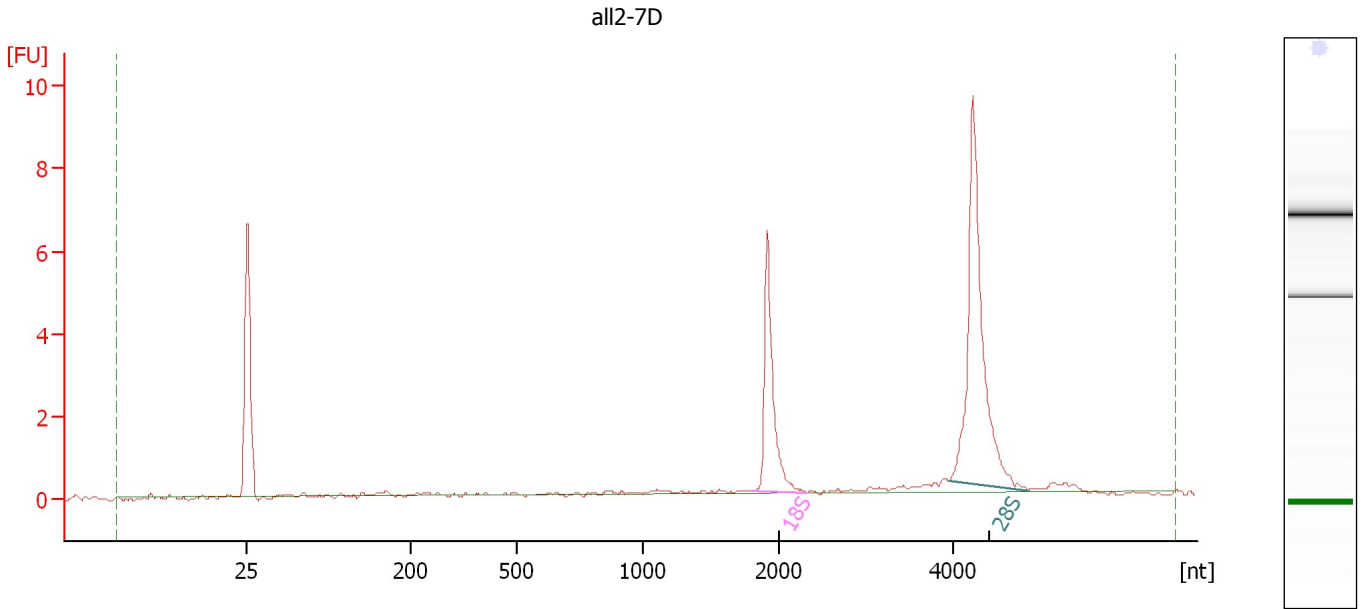
Fragment table for sample 4 : all1-7D

Name	Start Size [nt]	End Size [nt]	Area	% of total Area
18S	1,831	2,186	5.1	21.4
28S	3,955	4,907	9.7	40.2

Assay Class: Eukaryote Total RNA Nano
 Data Path: C:\...ents and Settings\Bioanalyzer\2012-02-17\2012-02-17_008.xad

Created: 2/17/2012 2:59:10 PM
 Modified: 2/17/2012 3:22:58 PM

Electropherogram Summary Continued ...



Overall Results for sample 5 : all2-7D

RNA Area:	22.7	RNA Integrity Number (RIN):	9.8 (B.02.08, Anomaly Threshold(s) manually adapted)
RNA Concentration:	24 ng/μl	Result Flagging Color:	
rRNA Ratio [28s / 18s]:	2.0	Result Flagging Label:	RIN: 9.80

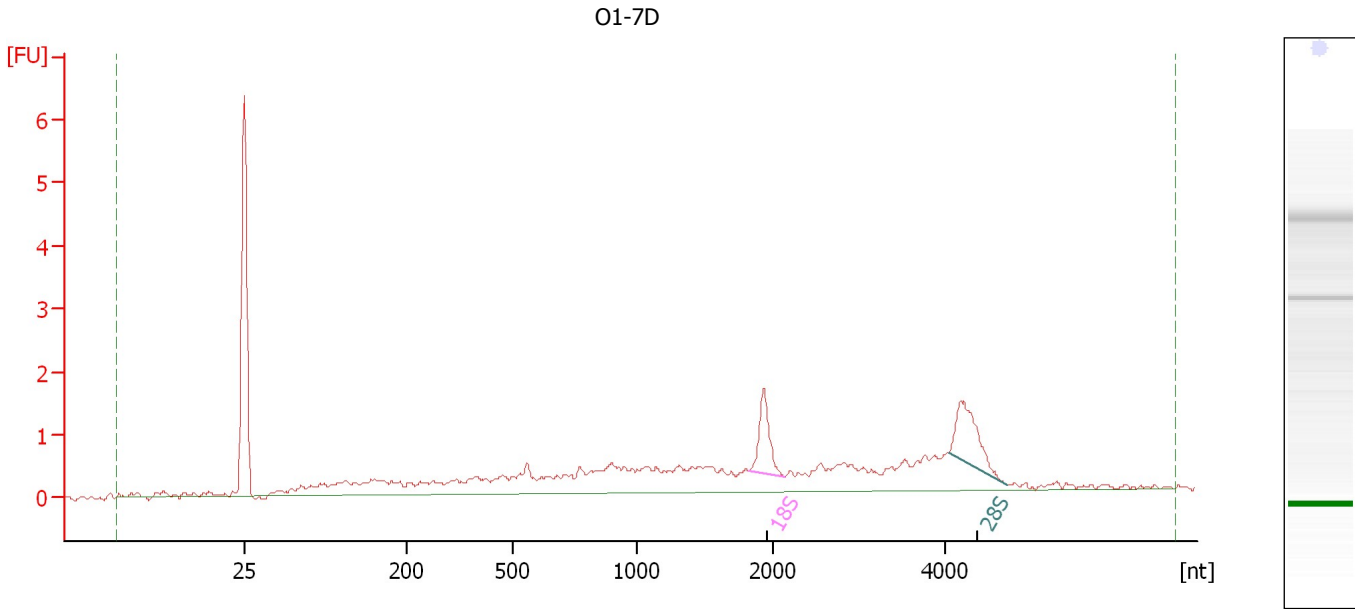
Fragment table for sample 5 : all2-7D

Name	Start Size [nt]	End Size [nt]	Area	% of total Area
18S	1,791	2,308	5.7	25.1
28S	3,941	4,862	11.5	50.7

Assay Class: Eukaryote Total RNA Nano
 Data Path: C:\...ents and Settings\Bioanalyzer\2012-02-17\2012-02-17_008.xad

Created: 2/17/2012 2:59:10 PM
 Modified: 2/17/2012 3:22:58 PM

Electropherogram Summary Continued ...



Overall Results for sample 6 : O1-7D

RNA Area:	29.2	RNA Integrity Number (RIN):	6.9 (B.02.08, Anomaly Threshold(s) manually adapted)
RNA Concentration:	32 ng/μl	Result Flagging Color:	
rRNA Ratio [28s / 18s]:	1.3	Result Flagging Label:	RIN: 6.90

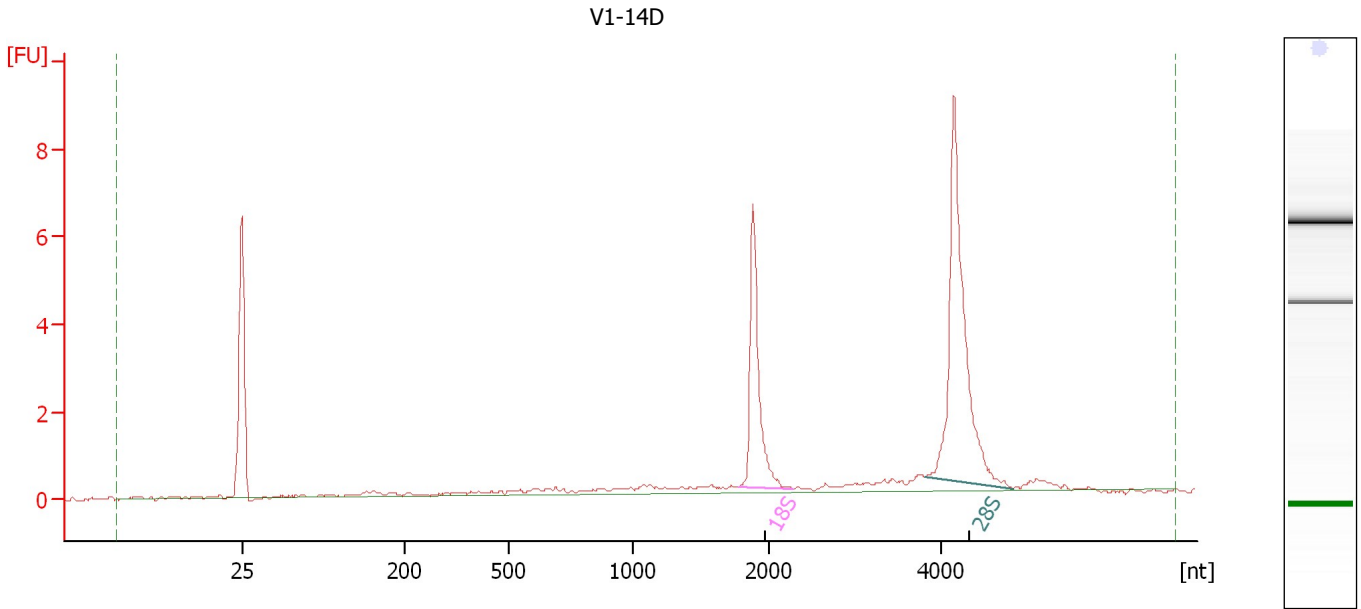
Fragment table for sample 6 : O1-7D

Name	Start Size [nt]	End Size [nt]	Area	% of total Area
18S	1,828	2,136	1.5	5.1
28S	4,026	4,705	1.9	6.6

Assay Class: Eukaryote Total RNA Nano
 Data Path: C:\...ents and Settings\Bioanalyzer\2012-02-17\2012-02-17_008.xad

Created: 2/17/2012 2:59:10 PM
 Modified: 2/17/2012 3:22:58 PM

Electropherogram Summary Continued ...



Overall Results for sample 7 : V1-14D

RNA Area:	29.6	RNA Integrity Number (RIN):	9.5 (B.02.08, Anomaly Threshold(s) manually adapted)
RNA Concentration:	32 ng/μl	Result Flagging Color:	
rRNA Ratio [28s / 18s]:	2.0	Result Flagging Label:	RIN: 9.50

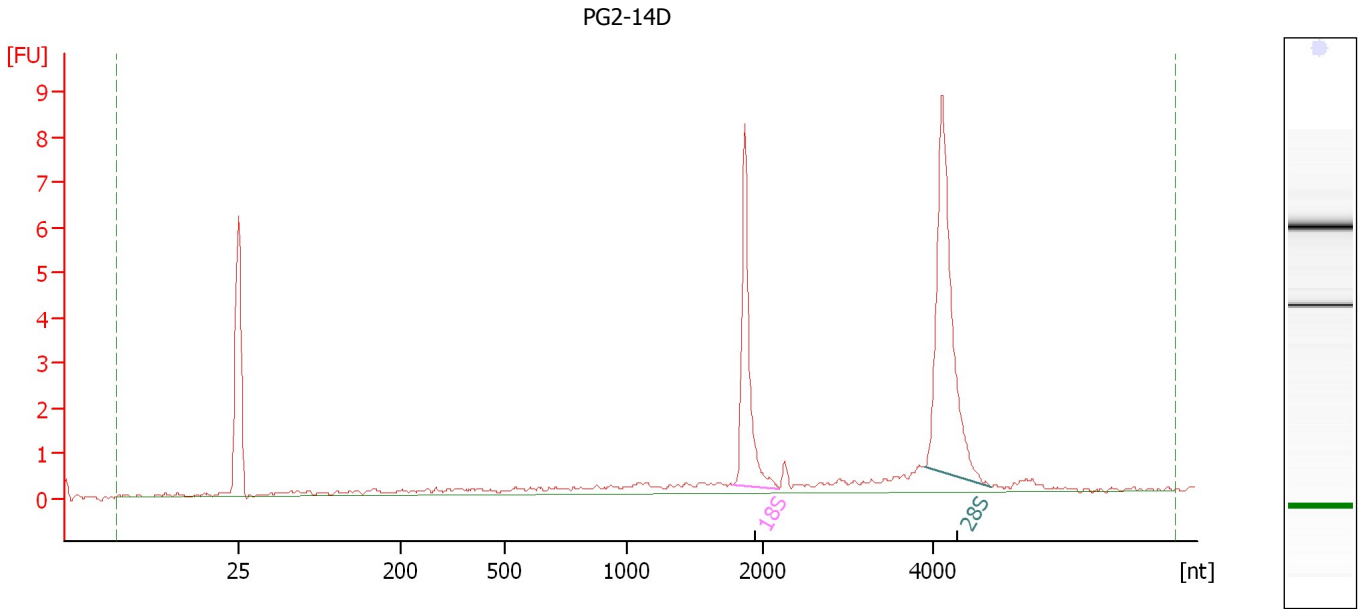
Fragment table for sample 7 : V1-14D

Name	Start Size [nt]	End Size [nt]	Area	% of total Area
18S	1,780	2,285	5.9	20.0
28S	3,822	4,839	11.8	39.9

Assay Class: Eukaryote Total RNA Nano
Data Path: C:\...ents and Settings\Bioanalyzer\2012-02-17\2012-02-17_008.xad

Created: 2/17/2012 2:59:10 PM
Modified: 2/17/2012 3:22:58 PM

Electropherogram Summary Continued ...



Overall Results for sample 8 : PG2-14D

RNA Area:	32.3	RNA Integrity Number (RIN):	9.2 (B.02.08, Anomaly Threshold(s) manually adapted)
RNA Concentration:	35 ng/μl		
rRNA Ratio [28s / 18s]:	1.8	Result Flagging Color:	
		Result Flagging Label:	RIN: 9.20

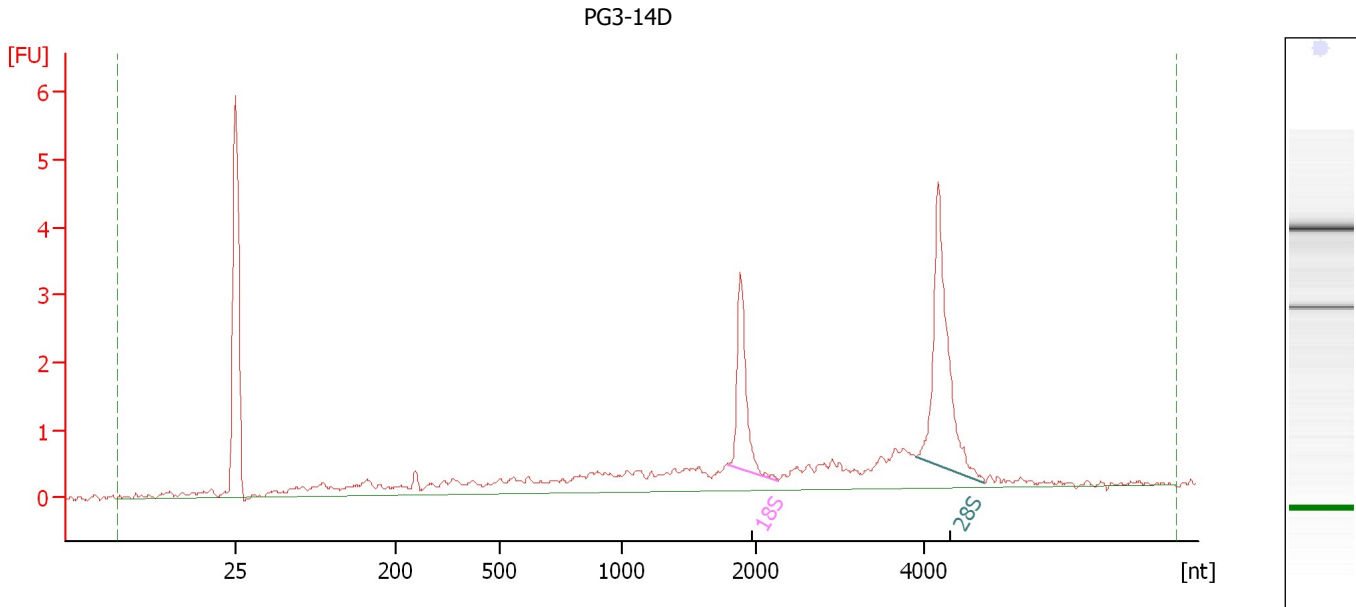
Fragment table for sample 8 : PG2-14D

Name	Start Size [nt]	End Size [nt]	Area	% of total Area
18S	1,786	2,198	6.4	19.9
28S	3,895	4,668	11.3	35.2

Assay Class: Eukaryote Total RNA Nano
 Data Path: C:\...ents and Settings\Bioanalyzer\2012-02-17\2012-02-17_008.xad

Created: 2/17/2012 2:59:10 PM
 Modified: 2/17/2012 3:22:58 PM

Electropherogram Summary Continued ...



Overall Results for sample 9 : PG3-14D

RNA Area:	27.3	RNA Integrity Number (RIN):	7.9 (B.02.08, Anomaly Threshold(s) manually adapted)
RNA Concentration:	29 ng/μl	Result Flagging Color:	
rRNA Ratio [28s / 18s]:	2.0	Result Flagging Label:	RIN: 7.90

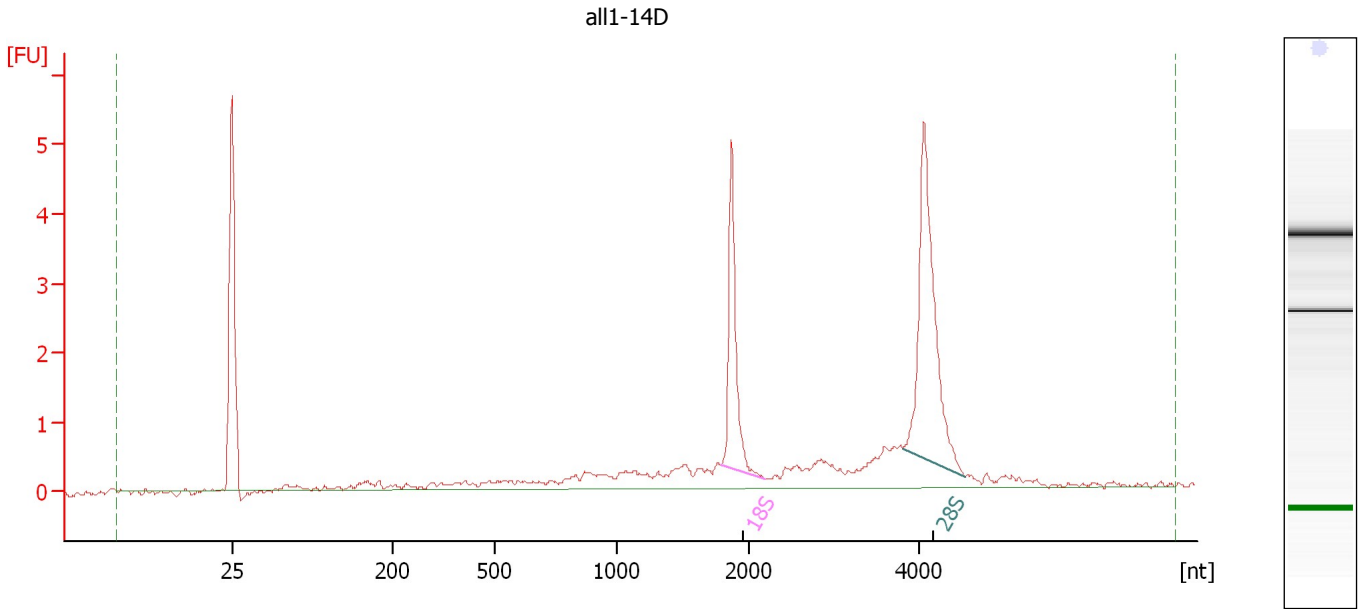
Fragment table for sample 9 : PG3-14D

Name	Start Size [nt]	End Size [nt]	Area	% of total Area
18S	1,799	2,274	2.7	10.0
28S	3,883	4,700	5.5	20.0

Assay Class: Eukaryote Total RNA Nano
Data Path: C:\...ents and Settings\Bioanalyzer\2012-02-17\2012-02-17_008.xad

Created: 2/17/2012 2:59:10 PM
Modified: 2/17/2012 3:22:58 PM

Electropherogram Summary Continued ...



Overall Results for sample 10 : all1-14D

RNA Area:	24.6	RNA Integrity Number (RIN):	8.4 (B.02.08, Anomaly Threshold(s) manually adapted)
RNA Concentration:	27 ng/μl		
rRNA Ratio [28s / 18s]:	1.8	Result Flagging Color:	
		Result Flagging Label:	RIN: 8.40

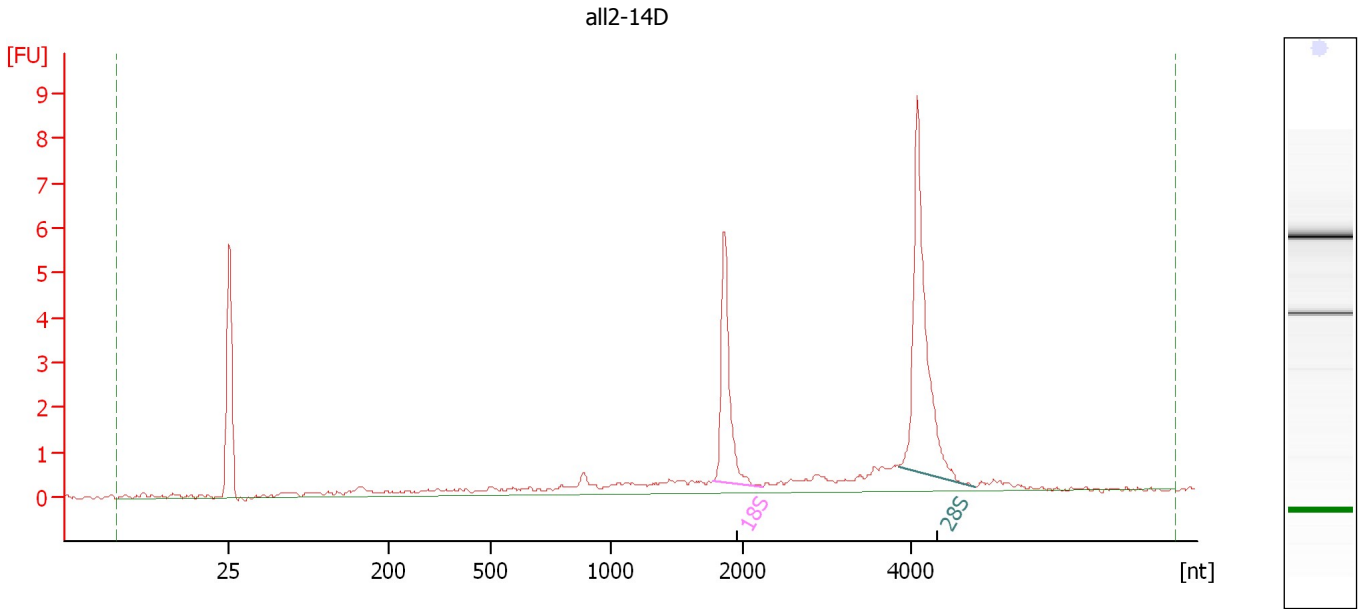
Fragment table for sample 10 : all1-14D

Name	Start Size [nt]	End Size [nt]	Area	% of total Area
18S	1,782	2,173	3.8	15.5
28S	3,802	4,534	7.0	28.3

Assay Class: Eukaryote Total RNA Nano
 Data Path: C:\...ents and Settings\Bioanalyzer\2012-02-17\2012-02-17_008.xad

Created: 2/17/2012 2:59:10 PM
 Modified: 2/17/2012 3:22:58 PM

Electropherogram Summary Continued ...



Overall Results for sample 11 : all2-14D

RNA Area:	30.9	RNA Integrity Number (RIN):	8.8 (B.02.08, Anomaly Threshold(s) manually adapted)
RNA Concentration:	33 ng/μl	Result Flagging Color:	
rRNA Ratio [28s / 18s]:	1.9	Result Flagging Label:	RIN: 8.80

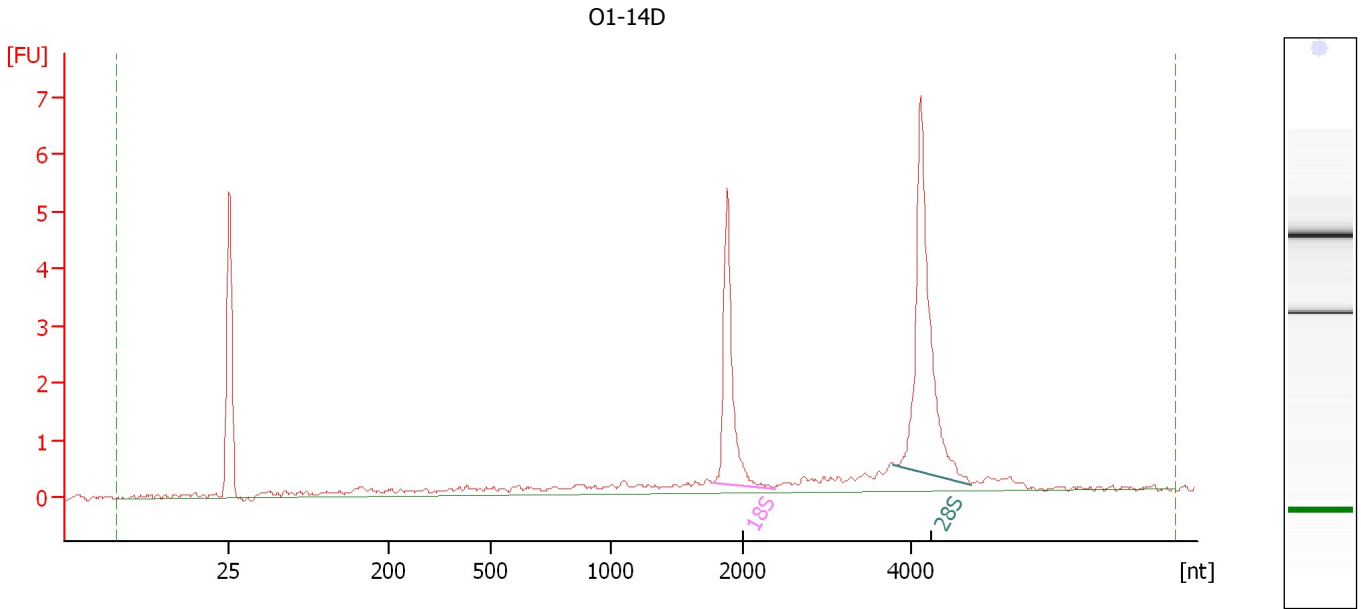
Fragment table for sample 11 : all2-14D

Name	Start Size [nt]	End Size [nt]	Area	% of total Area
18S	1,772	2,224	5.0	16.1
28S	3,837	4,751	9.4	30.4

Assay Class: Eukaryote Total RNA Nano
 Data Path: C:\...ents and Settings\Bioanalyzer\2012-02-17\2012-02-17_008.xad

Created: 2/17/2012 2:59:10 PM
 Modified: 2/17/2012 3:22:58 PM

Electropherogram Summary Continued ...



Overall Results for sample 12 : O1-14D

RNA Area:	25.6	RNA Integrity Number (RIN):	9.1 (B.02.08, Anomaly Threshold(s) manually adapted)
RNA Concentration:	28 ng/μl	Result Flagging Color:	
rRNA Ratio [28s / 18s]:	1.8	Result Flagging Label:	RIN: 9.10

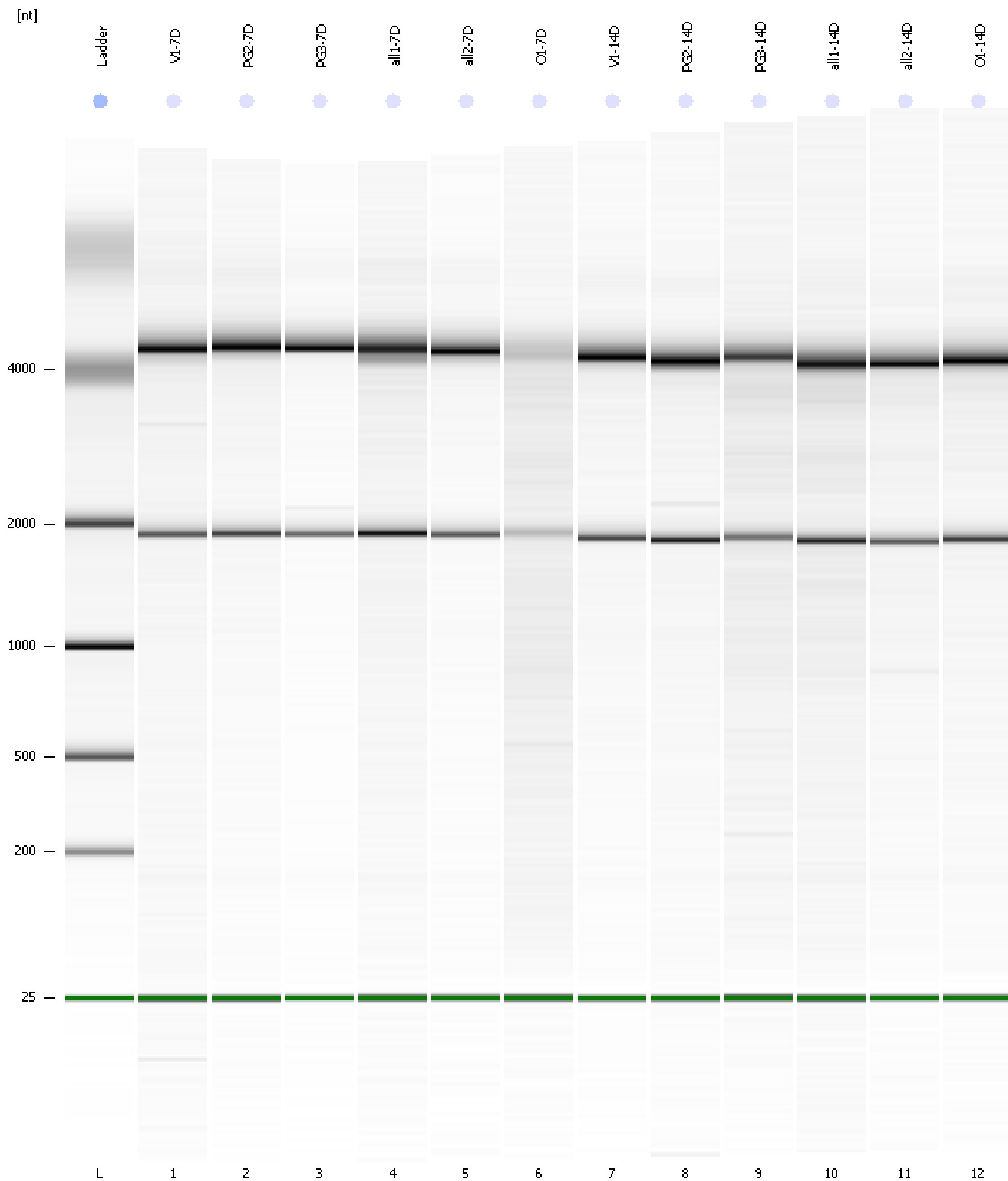
Fragment table for sample 12 : O1-14D

Name	Start Size [nt]	End Size [nt]	Area	% of total Area
18S	1,764	2,364	4.8	18.7
28S	3,786	4,700	8.5	33.2

Assay Class: Eukaryote Total RNA Nano
Data Path: C:\...ents and Settings\Bioanalyzer\2012-02-17\2012-02-17_008.xad

Created: 2/17/2012 2:59:10 PM
Modified: 2/17/2012 3:22:58 PM

Gel Image



Assay Class: Eukaryote Total RNA Nano
 Data Path: C:\...ents and Settings\Bioanalyzer\2012-02-17\2012-02-17_008.xad

Created: 2/17/2012 2:59:10 PM
 Modified: 2/17/2012 3:22:58 PM

Run Logbook

Description	Number	Source	Category	Sub Category	Time	Time Zone	User	Host
Run ended on port 1 (Number of wells acquired: 13)		Instrument	Run		2/17/2012 3:22:55 PM	(GMT --08:00) Pacific Standard Time	UC Davis	D8XSMGH1
Run started on port 1 (File: C:\Documents and Settings\Bioanalyzer\2012-02-17\2012-02-17_008.xad)		Instrument	Run		2/17/2012 2:59:12 PM	(GMT --08:00) Pacific Standard Time	UC Davis	D8XSMGH1
Product Number : G2938B		Instrument	Run		2/17/2012 2:59:12 PM	(GMT --08:00) Pacific Standard Time	UC Davis	D8XSMGH1
Name :		Instrument	Run		2/17/2012 2:59:12 PM	(GMT --08:00) Pacific Standard Time	UC Davis	D8XSMGH1
Vendor : Agilent Technologies		Instrument	Run		2/17/2012 2:59:12 PM	(GMT --08:00) Pacific Standard Time	UC Davis	D8XSMGH1
Serial# : DE13701086		Instrument	Run		2/17/2012 2:59:12 PM	(GMT --08:00) Pacific Standard Time	UC Davis	D8XSMGH1
Firmware : C.01.069		Instrument	Run		2/17/2012 2:59:12 PM	(GMT --08:00) Pacific Standard Time	UC Davis	D8XSMGH1
Cartridge : Electrode		Instrument	Run		2/17/2012 2:59:12 PM	(GMT --08:00) Pacific Standard Time	UC Davis	D8XSMGH1