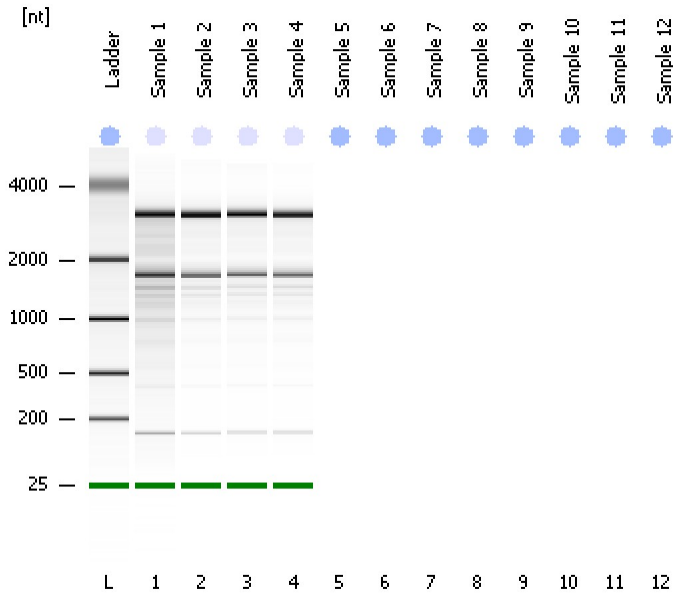


Assay Class: Eukaryote Total RNA Nano
Data Path: C:\...ents and Settings\Bioanalyzer\2012-02-21\2012-02-21_001.xad

Created: 2/21/2012 10:25:23 AM
Modified: 2/21/2012 10:46:18 AM

Electrophoresis File Run Summary



Instrument Information:

Instrument Name: DE13701086 Firmware: C.01.069
Serial#: DE13701086 Type: G2938B

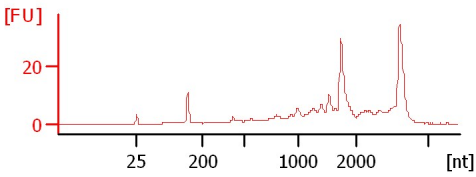
Assay Information:

Assay Origin Path: C:\Program Files\Agilent\2100 bioanalyzer\2100 expert\assays\RNA\Eukaryote Total RNA Nano Series II.xsy
Assay Class: Eukaryote Total RNA Nano
Version: 2.6
Assay Comments: Total RNA Analysis ng sensitivity (Eukaryote)
© Copyright 2003 - 2009 Agilent Technologies, Inc.

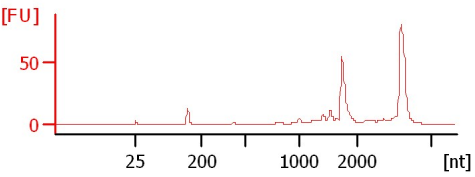
Chip Information:

Chip Lot #:
Reagent Kit Lot #:
Chip Comments:

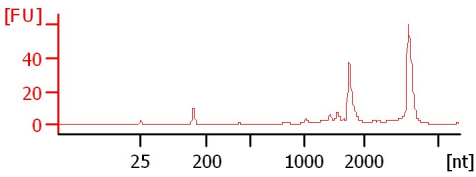
Sample 1
RIN: 5.80



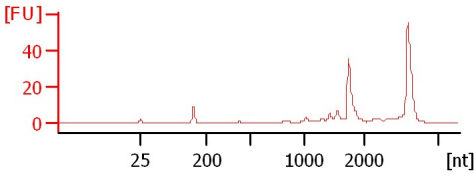
Sample 2
RIN: 7.70



Sample 3
RIN: 7.60



Sample 4
RIN: 7.50



Assay Class: Eukaryote Total RNA Nano
Data Path: C:\...ents and Settings\Bioanalyzer\2012-02-21\2012-02-21_001.xad

Created: 2/21/2012 10:25:23 AM
Modified: 2/21/2012 10:46:18 AM

Electrophoresis File Run Summary (Chip Summary)

Sample Name	Sample Comment	Status	Result Label	Result Color
Sample 1		✓	RIN: 5.80	
Sample 2		✓	RIN: 7.70	
Sample 3		✓	RIN: 7.60	
Sample 4		✓	RIN: 7.50	
Sample 5				
Sample 6				
Sample 7				
Sample 8				
Sample 9				
Sample 10				
Sample 11				
Sample 12				
Ladder		✓	All Other Samples	

Chip Lot #

Reagent Kit Lot #

Chip Comments :

Assay Class: Eukaryote Total RNA Nano
Data Path: C:\...ents and Settings\Bioanalyzer\2012-02-21\2012-02-21_001.xad

Created: 2/21/2012 10:25:23 AM
Modified: 2/21/2012 10:46:18 AM

Electrophoresis Assay Details

General Analysis Settings

Number of Available Sample and Ladder Wells (Max.) : 13
Minimum Visible Range [s] : 17
Maximum Visible Range [s] : 70
Start Analysis Time Range [s] : 19
End Analysis Time Range [s] : 69
Ladder Concentration [ng/μl] : 150
Lower Marker Concentration [ng/μl] : 0
Upper Marker Concentration [ng/μl] : 0
Used Lower Marker for Quantitation
Standard Curve Fit is Logarithmic
Show Data Aligned to Lower Marker

Integrator Settings

Integration Start Time [s] : 19
Integration End Time [s] : 69
Slope Threshold : 0.6
Height Threshold [FU] : 0.5
Area Threshold : 0.2
Width Threshold [s] : 0.5
Baseline Plateau [s] : 6

Filter Settings

Filter Width [s] : 0.5
Polynomial Order : 4

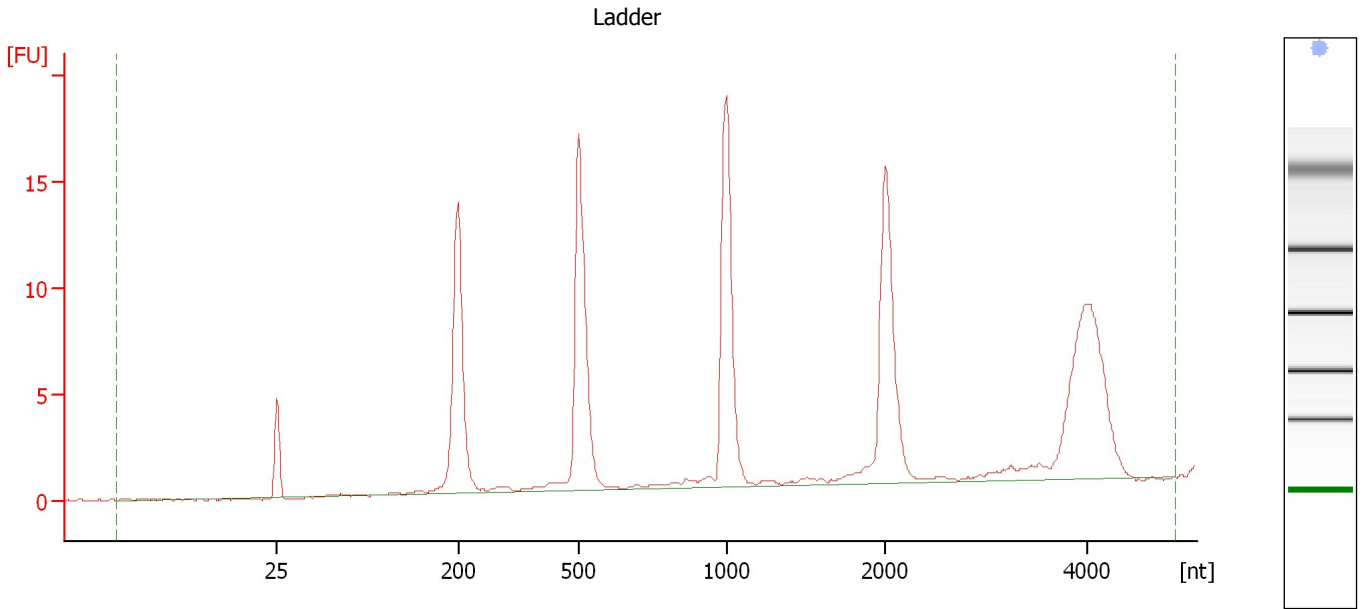
Ladder

Ladder Peak	Size
1	25
2	200
3	500
4	1000
5	2000
6	4000

Assay Class: Eukaryote Total RNA Nano
Data Path: C:\...ents and Settings\Bioanalyzer\2012-02-21\2012-02-21_001.xad

Created: 2/21/2012 10:25:23 AM
Modified: 2/21/2012 10:46:18 AM

Electropherogram Summary



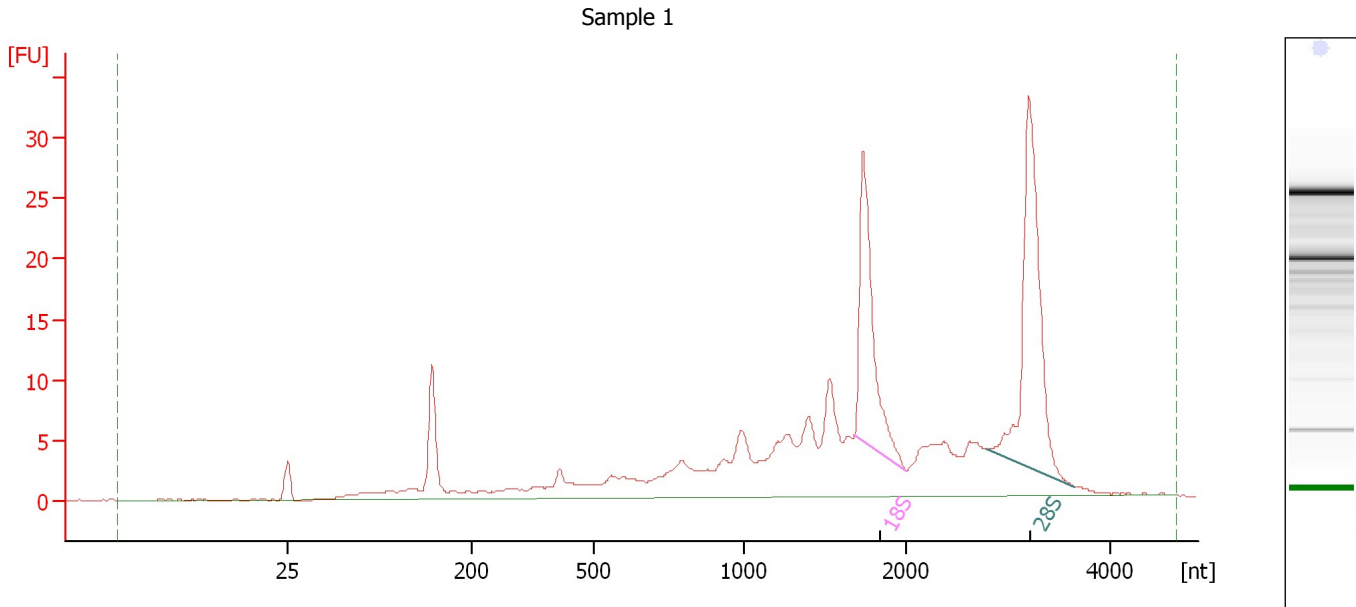
Overall Results for Ladder

RNA Area:	116.5	Result Flagging Color:	
RNA Concentration:	150 ng/μl	Result Flagging Label:	All Other Samples

Assay Class: Eukaryote Total RNA Nano
 Data Path: C:\...ents and Settings\Bioanalyzer\2012-02-21\2012-02-21_001.xad

Created: 2/21/2012 10:25:23 AM
 Modified: 2/21/2012 10:46:18 AM

Electropherogram Summary Continued ...



Overall Results for sample 1 : Sample 1

RNA Area:	255.9	RNA Integrity Number (RIN):	5.8 (B.02.08, Anomaly Threshold(s) manually adapted)
RNA Concentration:	329 ng/μl	Result Flagging Color:	
rRNA Ratio [28s / 18s]:	0.0	Result Flagging Label:	RIN: 5.80

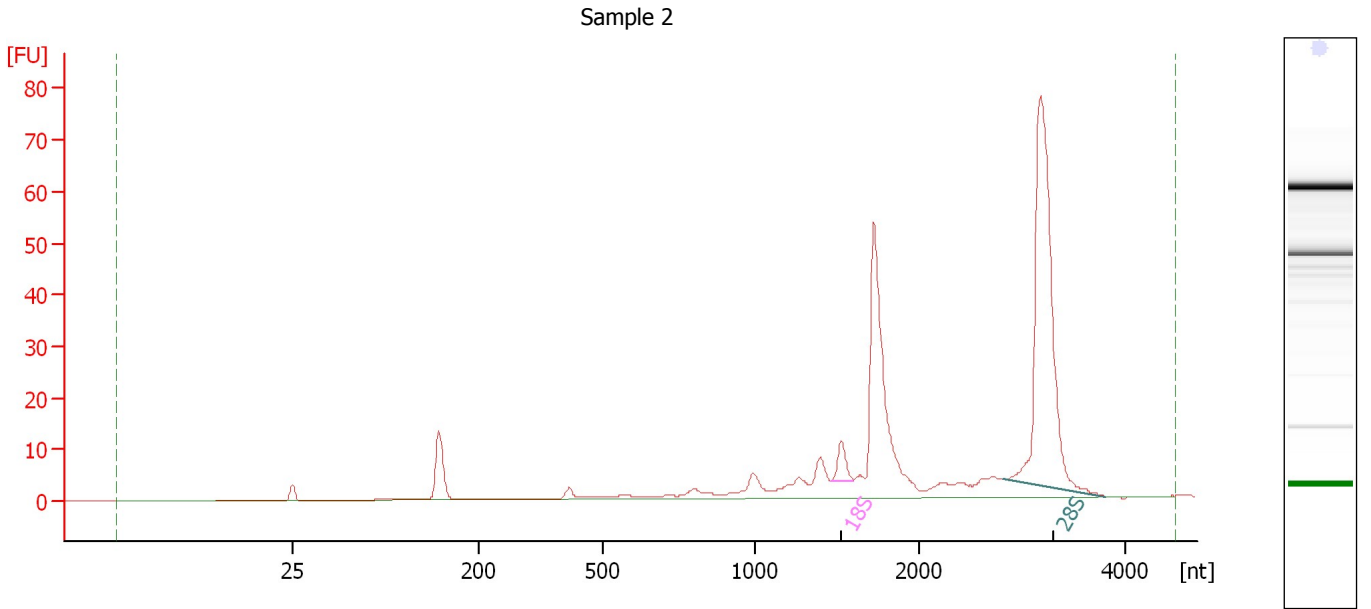
Fragment table for sample 1 : Sample 1

Name	Start Size [nt]	End Size [nt]	Area	% of total Area
18S	1,681	2,005	31.0	12.1
28S	2,779	3,648	44.1	17.2

Assay Class: Eukaryote Total RNA Nano
 Data Path: C:\...ents and Settings\Bioanalyzer\2012-02-21\2012-02-21_001.xad

Created: 2/21/2012 10:25:23 AM
 Modified: 2/21/2012 10:46:18 AM

Electropherogram Summary Continued ...



Overall Results for sample 2 : Sample 2

RNA Area:	279.6	RNA Integrity Number (RIN):	7.7 (B.02.08, Anomaly Threshold(s) manually adapted)
RNA Concentration:	360 ng/μl	Result Flagging Color:	
rRNA Ratio [28s / 18s]:	16.6	Result Flagging Label:	RIN: 7.70

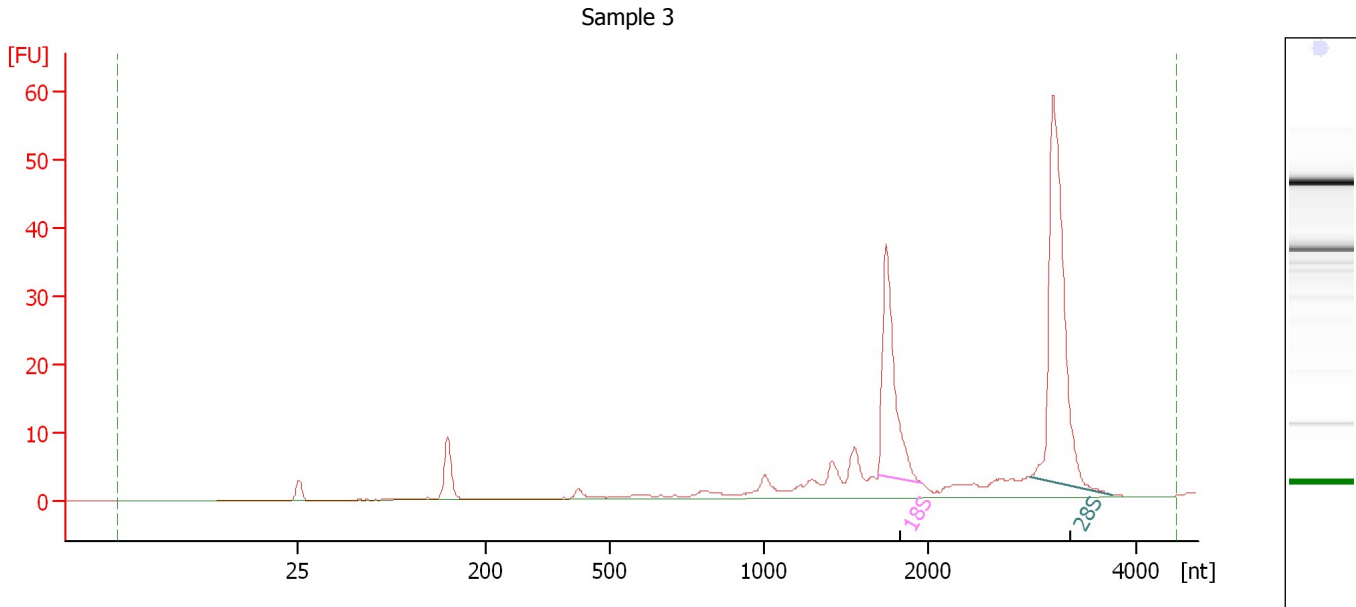
Fragment table for sample 2 : Sample 2

Name	Start Size [nt]	End Size [nt]	Area	% of total Area
18S	1,472	1,602	6.4	2.3
28S	2,819	3,813	105.6	37.8

Assay Class: Eukaryote Total RNA Nano
 Data Path: C:\...ents and Settings\Bioanalyzer\2012-02-21\2012-02-21_001.xad

Created: 2/21/2012 10:25:23 AM
 Modified: 2/21/2012 10:46:18 AM

Electropherogram Summary Continued ...



Overall Results for sample 3 : Sample 3

RNA Area:	194.9	RNA Integrity Number (RIN):	7.6 (B.02.08, Anomaly Threshold(s) manually adapted)
RNA Concentration:	251 ng/μl	Result Flagging Color:	
rRNA Ratio [28s / 18s]:	0.0	Result Flagging Label:	RIN: 7.60

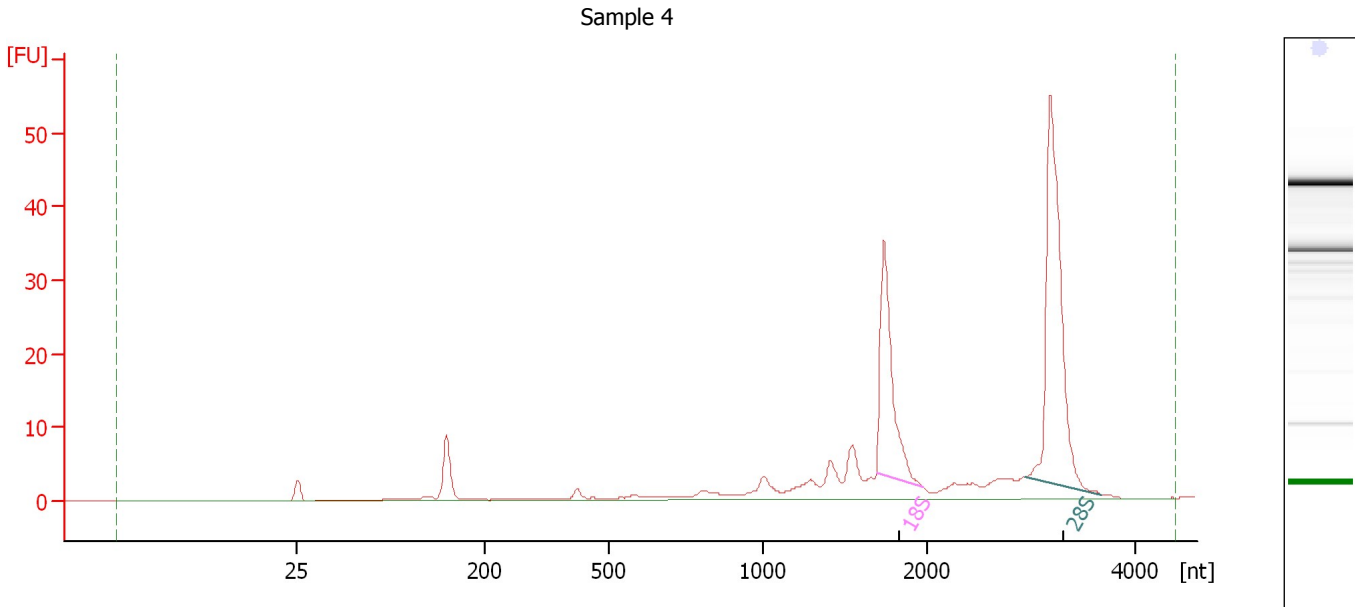
Fragment table for sample 3 : Sample 3

Name	Start Size [nt]	End Size [nt]	Area	% of total Area
18S	1,699	1,967	38.7	19.9
28S	2,976	3,767	69.4	35.6

Assay Class: Eukaryote Total RNA Nano
 Data Path: C:\...ents and Settings\Bioanalyzer\2012-02-21\2012-02-21_001.xad

Created: 2/21/2012 10:25:23 AM
 Modified: 2/21/2012 10:46:18 AM

Electropherogram Summary Continued ...



Overall Results for sample 4 : Sample 4

RNA Area:	190.0	RNA Integrity Number (RIN):	7.5 (B.02.08, Anomaly Threshold(s) manually adapted)
RNA Concentration:	245 ng/μl	Result Flagging Color:	
rRNA Ratio [28s / 18s]:	0.0	Result Flagging Label:	RIN: 7.50

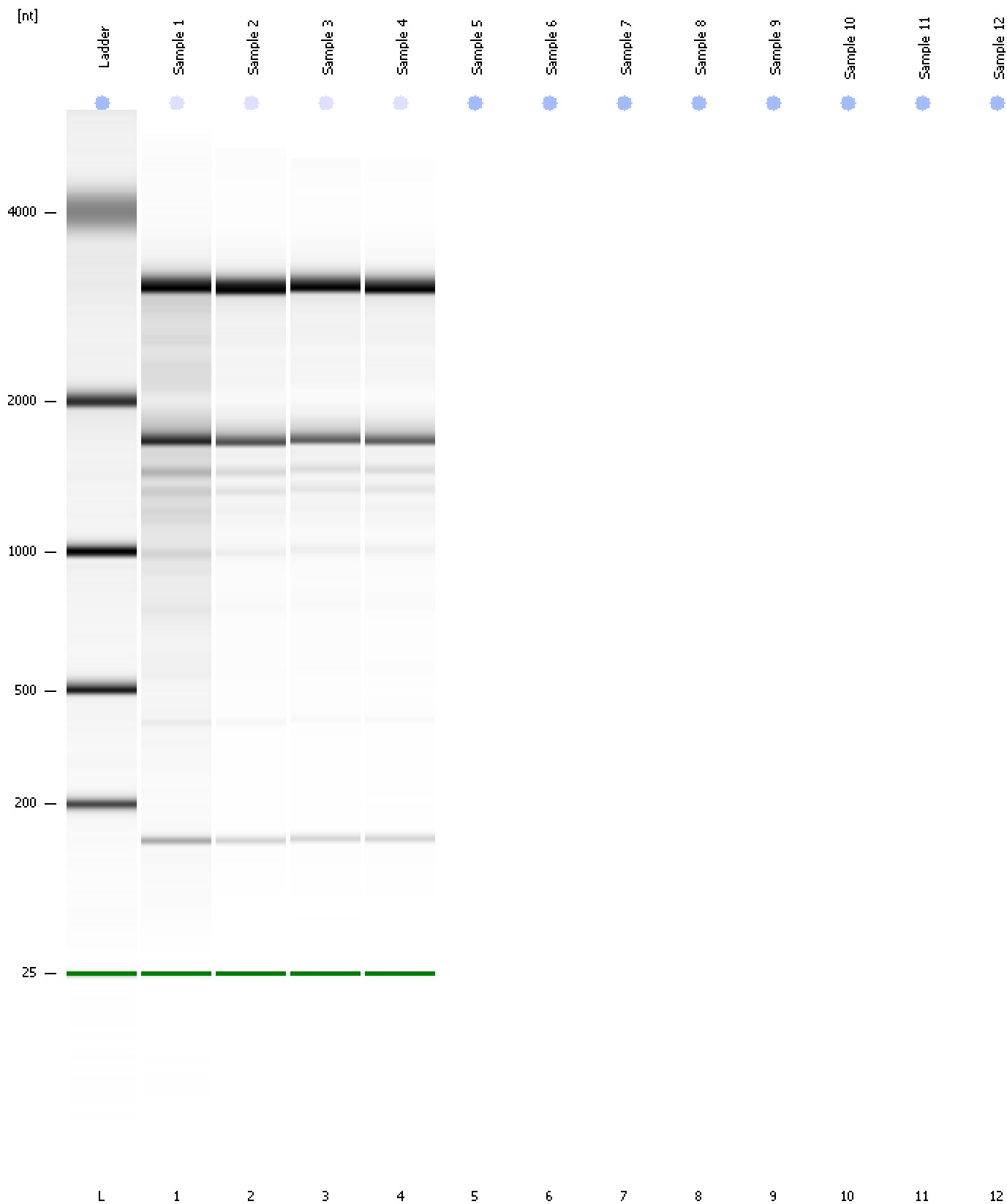
Fragment table for sample 4 : Sample 4

Name	Start Size [nt]	End Size [nt]	Area	% of total Area
18S	1,694	1,976	35.7	18.8
28S	2,945	3,674	64.2	33.8

Assay Class: Eukaryote Total RNA Nano
Data Path: C:\...ents and Settings\Bioanalyzer\2012-02-21\2012-02-21_001.xad

Created: 2/21/2012 10:25:23 AM
Modified: 2/21/2012 10:46:18 AM

Gel Image



Assay Class: Eukaryote Total RNA Nano
Data Path: C:\...ents and Settings\Bioanalyzer\2012-02-21\2012-02-21_001.xad

Created: 2/21/2012 10:25:23 AM
Modified: 2/21/2012 10:46:18 AM

Invalid Samples

- Sample 5 has not been run, no results available.
- Sample 6 has not been run, no results available.
- Sample 7 has not been run, no results available.
- Sample 8 has not been run, no results available.
- Sample 9 has not been run, no results available.
- Sample 10 has not been run, no results available.
- Sample 11 has not been run, no results available.
- Sample 12 has not been run, no results available.

Assay Class: Eukaryote Total RNA Nano
 Data Path: C:\...ents and Settings\Bioanalyzer\2012-02-21\2012-02-21_001.xad

Created: 2/21/2012 10:25:23 AM
 Modified: 2/21/2012 10:46:18 AM

Run Logbook

Description	Number	Source	Category	Sub Category	Time	Time Zone	User	Host
Run ended on port 1 (Number of wells acquired: 5)		Instrument	Run		2/21/2012 10:38:20 AM	(GMT --08:00) Pacific Standard Time	UC Davis	D8XSMGH1
Run started on port 1 (File: C:\Documents and Settings\Bioanalyzer\2012-02-21\2012-02-21_001.xad)		Instrument	Run		2/21/2012 10:25:30 AM	(GMT --08:00) Pacific Standard Time	UC Davis	D8XSMGH1
Product Number : G2938B		Instrument	Run		2/21/2012 10:25:30 AM	(GMT --08:00) Pacific Standard Time	UC Davis	D8XSMGH1
Name :		Instrument	Run		2/21/2012 10:25:30 AM	(GMT --08:00) Pacific Standard Time	UC Davis	D8XSMGH1
Vendor : Agilent Technologies		Instrument	Run		2/21/2012 10:25:30 AM	(GMT --08:00) Pacific Standard Time	UC Davis	D8XSMGH1
Serial# : DE13701086		Instrument	Run		2/21/2012 10:25:30 AM	(GMT --08:00) Pacific Standard Time	UC Davis	D8XSMGH1
Firmware : C.01.069		Instrument	Run		2/21/2012 10:25:30 AM	(GMT --08:00) Pacific Standard Time	UC Davis	D8XSMGH1
Cartridge : Electrode		Instrument	Run		2/21/2012 10:25:30 AM	(GMT --08:00) Pacific Standard Time	UC Davis	D8XSMGH1