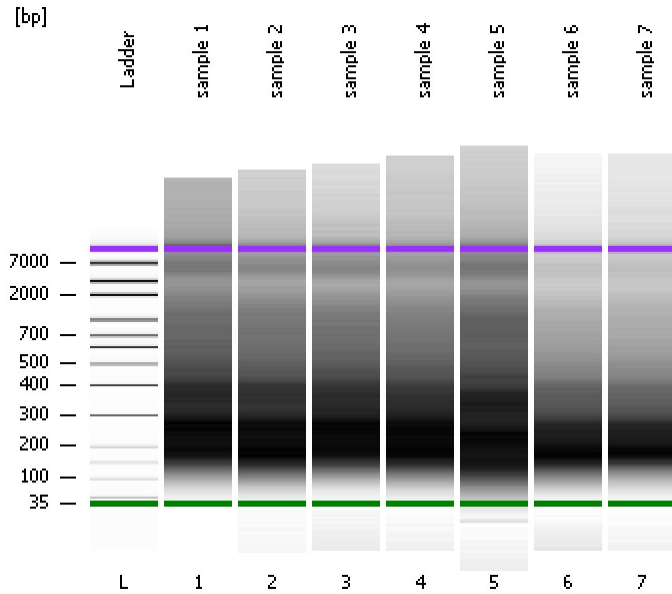


Assay Class: High Sensitivity DNA Assay
Data Path: C:\...nts and Settings\Bioanalyzer\2012-02-21\2012-02-21_002B.xad

Created: 2/21/2012 11:18:23 AM
Modified: 2/21/2012 12:09:03 PM

Electrophoresis File Run Summary



Instrument Information:

Instrument Name: DE13701086 Firmware: C.01.069
Serial#: DE13701086 Type: G2938B

Assay Information:

Assay Origin Path: C:\Program Files\Agilent\2100 bioanalyzer\2100 expert\assays\dsDNA\High Sensitivity DNA.xsy
Assay Class: High Sensitivity DNA Assay
Version: 1.03
Assay Comments: Copyright © 2003-2010 Agilent Technologies

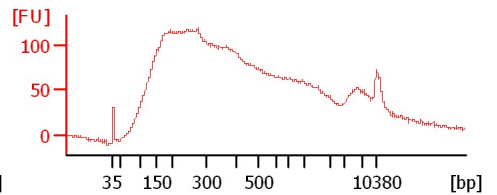
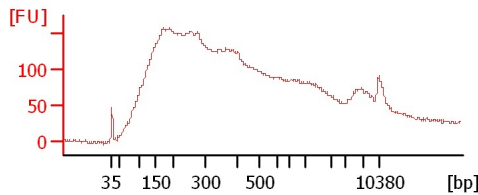
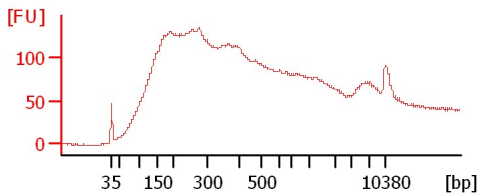
Chip Information:

Chip Lot #: Reagent Kit Lot #: Chip Comments:

sample 1

sample 2

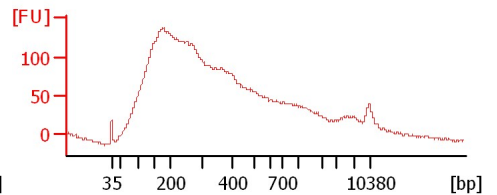
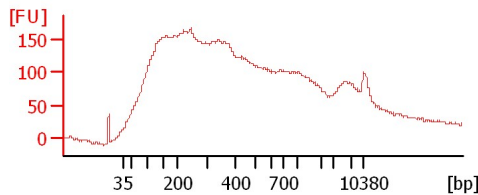
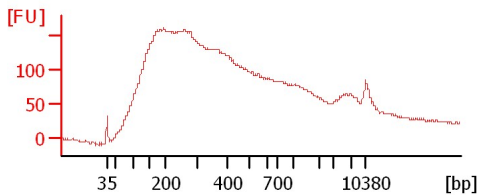
sample 3



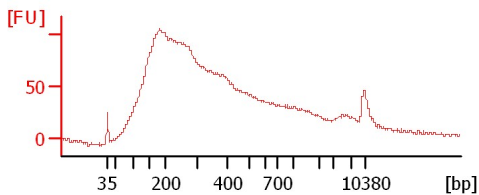
sample 4

sample 5

sample 6



sample 7



Assay Class: High Sensitivity DNA Assay
Data Path: C:\...nts and Settings\Bioanalyzer\2012-02-21\2012-02-21_002B.xad

Created: 2/21/2012 11:18:23 AM
Modified: 2/21/2012 12:09:03 PM

Electrophoresis File Run Summary (Chip Summary)

Sample Name	Sample Comment	Rest. Digest	Status	Observation	Result Label	Result Color
sample 1		<input type="checkbox"/>				
sample 2		<input type="checkbox"/>				
sample 3		<input type="checkbox"/>				
sample 4		<input type="checkbox"/>				
sample 5		<input type="checkbox"/>				
sample 6		<input type="checkbox"/>				
sample 7		<input type="checkbox"/>				
Ladder		<input type="checkbox"/>				

Chip Lot # **Reagent Kit Lot #**

Chip Comments :

Assay Class: High Sensitivity DNA Assay
Data Path: C:\...nts and Settings\Bioanalyzer\2012-02-21\2012-02-21_002B.xad

Created: 2/21/2012 11:18:23 AM
Modified: 2/21/2012 12:09:03 PM

Electrophoresis Assay Details

General Analysis Settings

Number of Available Sample and Ladder Wells (Max.) : 12
Minimum Visible Range [s] : 32
Maximum Visible Range [s] : 138
Start Analysis Time Range [s] : 33
End Analysis Time Range [s] : 137.5
Ladder Concentration [pg/μl] : 1950
Uses Standard Area for Ladder Fragments
Lower Marker Concentration [pg/μl] : 125
Upper Marker Concentration [pg/μl] : 75
Used Upper Marker for Quantitation
Standard Curve Fit is Point to Point
Show Data Aligned to Lower and Upper Marker

Integrator Settings

Integration Start Time [s] : 33.05
Integration End Time [s] : 137
Slope Threshold : 0.8
Height Threshold [FU] : 5
Area Threshold : 0.1
Width Threshold [s] : 0.6
Baseline Plateau [s] : 0.5

Filter Settings

Filter Width [s] : 0.5
Polynomial Order : 4

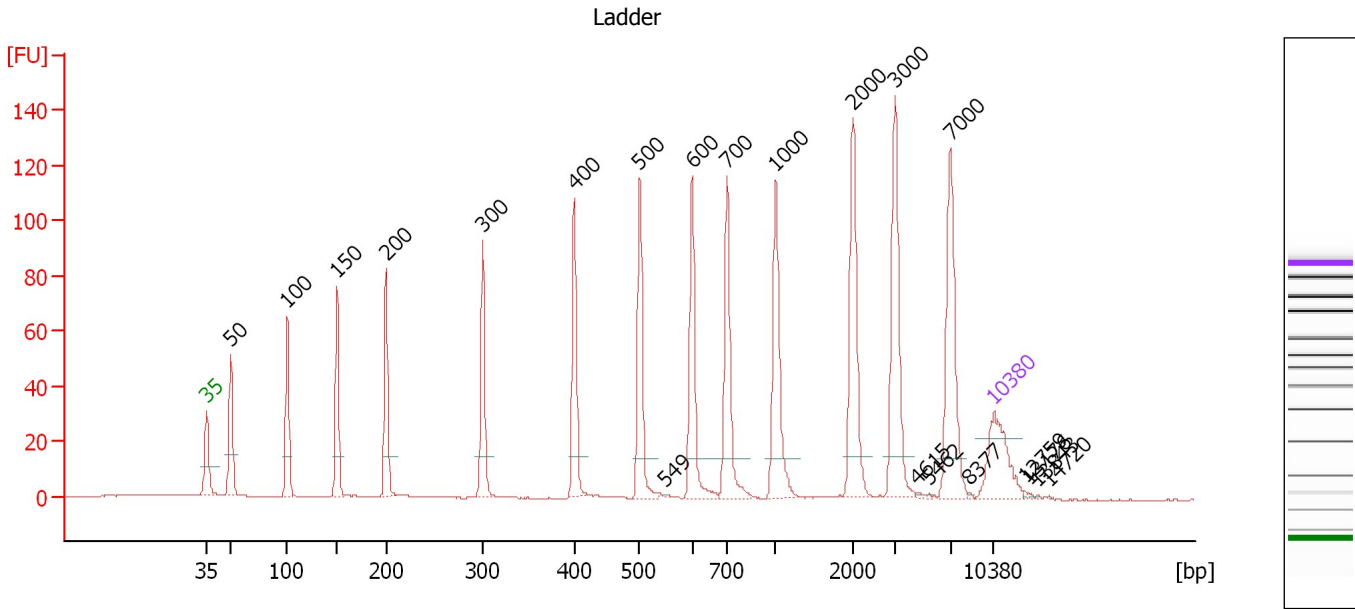
Ladder

Ladder Peak	Size	Area
1	35	160
2	50	210
3	100	208
4	150	221
5	200	242
6	300	270
7	400	305
8	500	306
9	600	336
10	700	321
11	1000	366
12	2000	413
13	3000	411
14	7000	400
15	10380	214

Assay Class: High Sensitivity DNA Assay
 Data Path: C:\...nts and Settings\Bioanalyzer\2012-02-21\2012-02-21_002B.xad

Created: 2/21/2012 11:18:23 AM
 Modified: 2/21/2012 12:09:03 PM

Electropherogram Summary



Overall Results for Ladder

Noise: 0.1

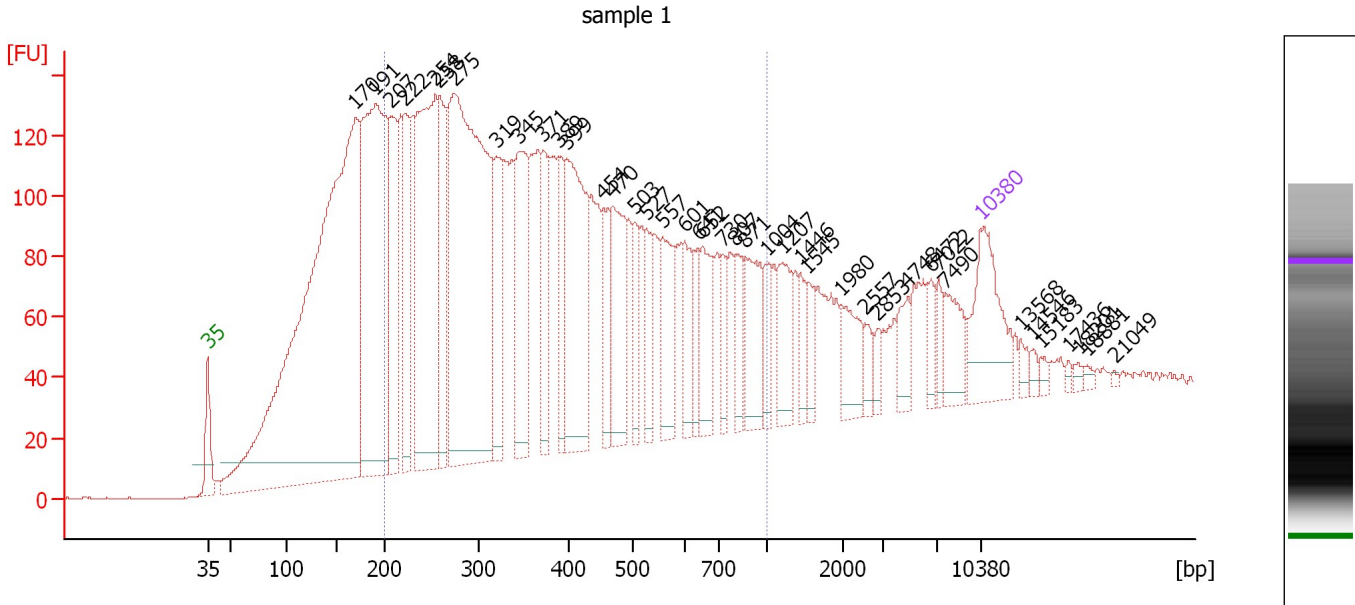
Peak table for Ladder

Peak	Size [bp]	Conc. [pg/μl]	Molarity [pmol/l]	Observations
1	35	125.00	5,411.3	Lower Marker
2	50	150.00	4,545.5	Ladder Peak
3	100	150.00	2,272.7	Ladder Peak
4	150	150.00	1,515.2	Ladder Peak
5	200	150.00	1,136.4	Ladder Peak
6	300	150.00	757.6	Ladder Peak
7	400	150.00	568.2	Ladder Peak
8	500	150.00	454.5	Ladder Peak
9	549	0.00	0.0	
10	600	150.00	378.8	Ladder Peak
11	700	150.00	324.7	Ladder Peak
12	1,000	150.00	227.3	Ladder Peak
13	2,000	150.00	113.6	Ladder Peak
14	3,000	150.00	75.8	Ladder Peak
15	4,615	0.00	0.0	
16	5,462	0.00	0.0	
17	7,000	150.00	32.5	Ladder Peak
18	8,377	0.00	0.0	
19	10,380	75.00	10.9	Upper Marker
20	12,759	0.00	0.0	
21	13,176	0.00	0.0	
22	13,843	0.00	0.0	
23	14,720	0.00	0.0	

Assay Class: High Sensitivity DNA Assay
 Data Path: C:\...nts and Settings\Bioanalyzer\2012-02-21\2012-02-21_002B.xad

Created: 2/21/2012 11:18:23 AM
 Modified: 2/21/2012 12:09:03 PM

Electropherogram Summary Continued ...



Overall Results for sample 1 : sample 1

Number of peaks found: 41 Corr. Area 1: 4,093.4
 Noise: 0.2

Peak table for sample 1 : sample 1


Peak	Size [bp]	Conc. [pg/μl]	Molarity [pmol/l]	Observations
1	35	125.00	5,411.3	Lower Marker
2	170	1,167.10	10,376.4	
3	191	494.33	3,918.8	
4	207	160.22	1,170.7	
5	222	128.70	878.7	
6	254	354.33	2,110.5	
7	258	128.56	754.2	
8	275	614.02	3,388.9	
9	319	92.35	439.0	
10	345	141.57	621.8	
11	371	76.31	311.5	
12	389	62.14	242.0	
13	399	196.94	748.6	
14	454	54.21	181.1	
15	470	108.35	349.2	
16	503	41.75	125.8	
17	527	44.36	127.6	
18	557	71.98	195.8	
19	601	48.40	122.0	
20	641	30.75	72.7	
21	652	58.15	135.1	
22	730	28.97	60.1	
23	807	33.70	63.3	
24	871	67.80	118.0	
25	1,004	26.32	39.7	
26	1,207	49.01	61.5	

Assay Class: High Sensitivity DNA Assay
 Data Path: C:\...nts and Settings\Bioanalyzer\2012-02-21\2012-02-21_002B.xad


Created: 2/21/2012 11:18:23 AM
 Modified: 2/21/2012 12:09:03 PM

Electropherogram Summary Continued ...

... Peak table for sample 1 : sample 1

Peak	Size [bp]	Conc. [pg/μl]	Molarity [pmol/l]	Observations
27	1,446	22.76	23.8	
28	1,545	21.19	20.8	
29	1,980	40.67	31.1	
30	2,557	13.78	8.2	
31	2,853	10.10	5.4	
32	4,748	23.41	7.5	
33	6,472	18.01	4.2	
34	7,022	14.10	3.0	
35	7,490	35.73	7.2	
36	 10,380	75.00	10.9	Upper Marker
37	13,568	0.00	0.0	
38	14,546	0.00	0.0	
39	15,183	0.00	0.0	
40	17,436	0.00	0.0	
41	18,201	0.00	0.0	
42	18,881	0.00	0.0	
43	21,049	0.00	0.0	

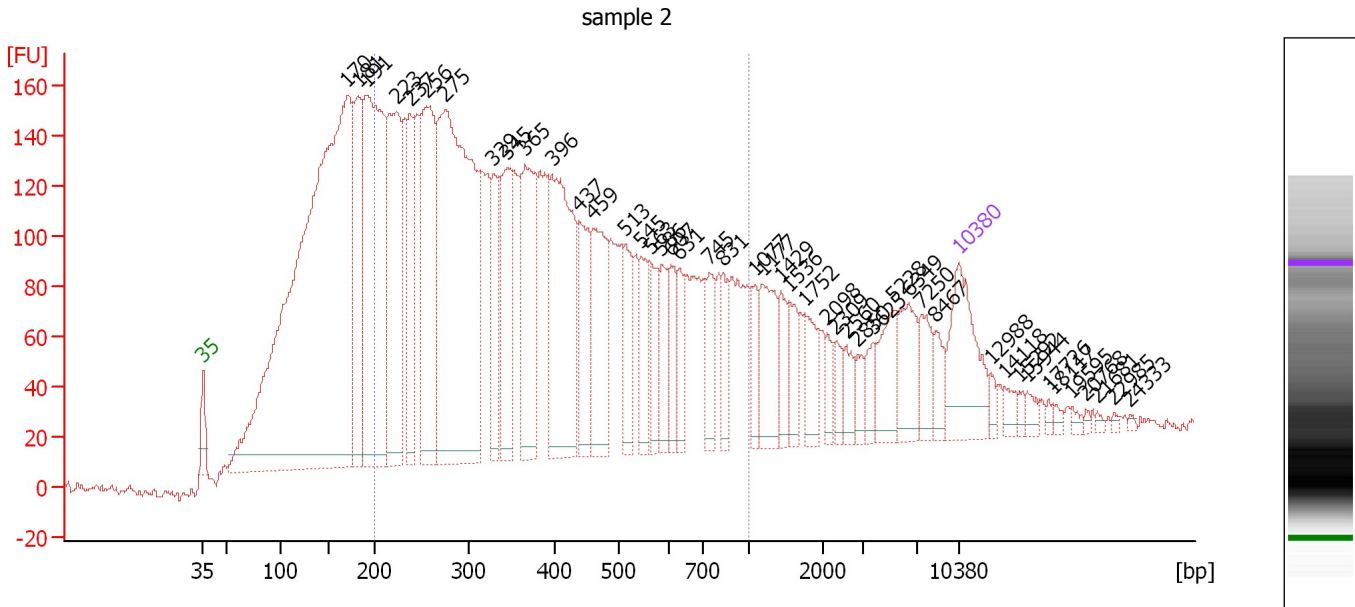
Region table for sample 1 : sample 1

From [bp]	Molarity [pmol/l]	Average Size [bp]	Conc. [pg/μl]	To [bp]	Corr. Area	% of Total	Size distribution in CV [%]	Color
200	15,291.6	411	3,327.28	1,000	4,093.4	63	43.5	

Assay Class: High Sensitivity DNA Assay
 Data Path: C:\...nts and Settings\Bioanalyzer\2012-02-21\2012-02-21_002B.xad

Created: 2/21/2012 11:18:23 AM
 Modified: 2/21/2012 12:09:03 PM

Electropherogram Summary Continued ...



Overall Results for sample 2 : sample 2

Number of peaks found: 46 Corr. Area 1: 4,878.2
 Noise: 2.1

Peak table for sample 2 : sample 2

Peak	Size [bp]	Conc. [pg/μl]	Molarity [pmol/l]	Observations
1	35	125.00	5,411.3	Lower Marker
2	170	1,257.34	11,174.3	
3	181	172.00	1,437.0	
4	191	433.71	3,449.2	
5	223	248.48	1,691.6	
6	237	106.82	681.6	
7	256	238.07	1,410.3	
8	275	561.78	3,092.7	
9	329	86.19	396.9	
10	345	110.98	487.6	
11	365	165.73	688.0	
12	396	226.90	868.0	
13	437	86.42	299.7	
14	459	116.66	385.2	
15	513	56.64	167.2	
16	545	43.31	120.4	
17	563	43.10	116.0	
18	586	38.98	100.9	
19	607	37.93	94.7	
20	631	32.68	78.5	
21	745	39.84	81.1	
22	831	29.09	53.1	
23	1,077	24.32	34.2	
24	1,177	59.93	77.1	
25	1,429	26.98	28.6	
26	1,536	26.41	26.0	

Assay Class: High Sensitivity DNA Assay
 Data Path: C:\...nts and Settings\Bioanalyzer\2012-02-21\2012-02-21_002B.xad


Created: 2/21/2012 11:18:23 AM
 Modified: 2/21/2012 12:09:03 PM

Electropherogram Summary Continued ...

... Peak table for sample 2 : sample 2

Peak	Size [bp]	Conc. [pg/µl]	Molarity [pmol/l]	Observations
27	1,752	33.79	29.2	
28	2,098	14.35	10.4	
29	2,309	16.00	10.5	
30	2,560	16.27	9.6	
31	2,850	13.74	7.3	
32	3,625	16.61	6.9	
33	5,228	41.87	12.1	
34	6,349	42.81	10.2	
35	7,250	29.45	6.2	
36	8,467	18.34	3.3	
37	10,380	75.00	10.9	Upper Marker
38	12,988	0.00	0.0	
39	14,118	0.00	0.0	
40	15,292	0.00	0.0	
41	15,944	0.00	0.0	
42	17,726	0.00	0.0	
43	18,117	0.00	0.0	
44	19,595	0.00	0.0	
45	20,768	0.00	0.0	
46	21,681	0.00	0.0	
47	22,985	0.00	0.0	
48	24,333	0.00	0.0	

Region table for sample 2 : sample 2


From [bp]	Molarity [pmol/l]	Average Size [bp]	Conc. [pg/µl]	To [bp]	Corr. Area	% of Total	Size distribution in CV [%]	Color
200	15,221.8	411	3,305.39	1,000	4,878.2	60	43.9	

Assay Class: High Sensitivity DNA Assay
 Data Path: C:\...nts and Settings\Bioanalyzer\2012-02-21\2012-02-21_002B.xad


Created: 2/21/2012 11:18:23 AM
 Modified: 2/21/2012 12:09:03 PM

Electropherogram Summary Continued ...

... Peak table for sample 3 : sample 3

Peak	Size [bp]	Conc. [pg/µl]	Molarity [pmol/l]	Observations
27	678	36.50	81.6	
28	736	50.64	104.3	
29	861	33.71	59.3	
30	966	68.23	107.1	
31	1,278	38.42	45.6	
32	1,540	20.94	20.6	
33	1,635	16.66	15.4	
34	1,715	26.99	23.8	
35	1,992	24.06	18.3	
36	2,306	11.87	7.8	
37	2,547	13.96	8.3	
38	2,881	13.70	7.2	
39	3,939	23.26	8.9	
40	4,345	13.06	4.6	
41	5,767	36.72	9.6	
42	7,426	26.50	5.4	
43	9,498	11.80	1.9	
44	 10,380	75.00	10.9	Upper Marker
45	12,805	0.00	0.0	
46	14,172	0.00	0.0	
47	15,538	0.00	0.0	
48	16,200	0.00	0.0	
49	17,390	0.00	0.0	
50	18,051	0.00	0.0	
51	19,859	0.00	0.0	
52	20,785	0.00	0.0	
53	21,622	0.00	0.0	
54	22,328	0.00	0.0	
55	23,651	0.00	0.0	
56	24,312	0.00	0.0	

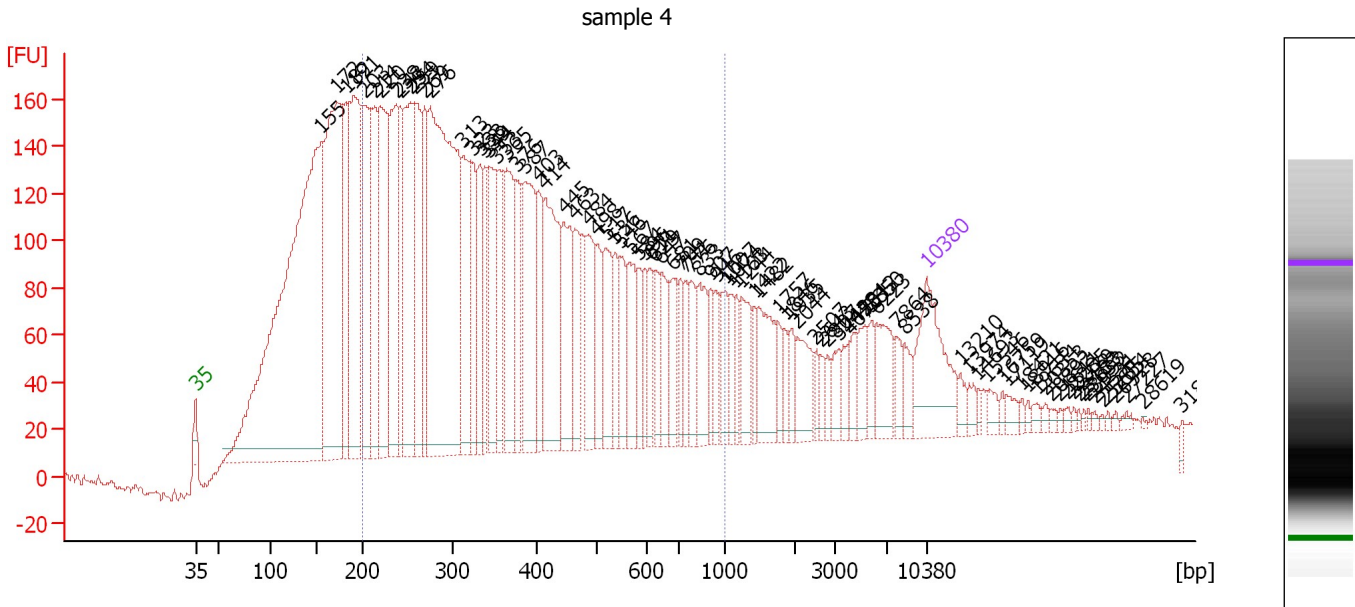
Region table for sample 3 : sample 3

From [bp]	Molarity [pmol/l]	Average Size [bp]	Conc. [pg/µl]	To [bp]	Corr. Area	% of Total	Size distribution in CV [%]	Color
200	14,572.9	413	3,180.67	1,000	3,964.5	63	43.9	

Assay Class: High Sensitivity DNA Assay
 Data Path: C:\...nts and Settings\Bioanalyzer\2012-02-21\2012-02-21_002B.xad

Created: 2/21/2012 11:18:23 AM
 Modified: 2/21/2012 12:09:03 PM

Electropherogram Summary Continued ...



Setpoint Deviations for sample 4 : sample 4

Width Threshold [s] : 0.2

Overall Results for sample 4 : sample 4

Number of peaks found: 89 Corr. Area 1: 5,068.2
 Noise: 1.4

Peak table for sample 4 : sample 4


Peak	Size [bp]	Conc. [pg/μl]	Molarity [pmol/l]	Observations
1	35	125.00	5,411.3	Lower Marker
2	155	920.25	8,996.4	
3	172	389.18	3,425.5	
4	182	118.62	986.4	
5	191	242.91	1,926.3	
6	203	160.05	1,195.2	
7	214	116.23	824.6	
8	220	180.21	1,240.8	
9	238	163.57	1,042.2	
10	243	72.01	448.7	
11	254	167.41	997.2	
12	259	130.52	765.0	
13	269	83.55	470.3	
14	276	489.53	2,690.7	
15	313	103.16	499.2	
16	323	61.40	287.8	
17	333	71.64	326.3	
18	339	35.22	157.4	
19	344	92.48	407.3	
20	353	67.32	289.1	
21	365	102.53	425.9	
22	376	56.21	226.4	

Assay Class: High Sensitivity DNA Assay
 Data Path: C:\...nts and Settings\Bioanalyzer\2012-02-21\2012-02-21_002B.xad

Created: 2/21/2012 11:18:23 AM
 Modified: 2/21/2012 12:09:03 PM

Electropherogram Summary Continued ...

... Peak table for sample 4 : sample 4

Peak	Size [bp]	Conc. [pg/µl]	Molarity [pmol/l]	Observations
23	387	127.73	500.3	
24	403	59.74	224.8	
25	414	143.60	525.5	
26	445	85.11	290.0	
27	463	55.90	182.9	
28	484	63.98	200.3	
29	498	43.65	132.8	
30	517	57.37	168.0	
31	536	39.49	111.6	
32	546	40.82	113.3	
33	567	49.44	132.2	
34	584	26.09	67.7	
35	596	22.98	58.4	
36	611	27.94	69.3	
37	629	27.63	66.6	
38	647	36.70	86.0	
39	681	43.24	96.2	
40	709	21.41	45.8	
41	741	20.84	42.6	
42	776	35.92	70.1	
43	833	44.27	80.5	
44	907	21.62	36.1	
45	946	19.10	30.6	
46	1,007	29.30	44.1	
47	1,074	17.89	25.3	
48	1,163	17.25	22.5	
49	1,244	36.07	43.9	
50	1,423	13.61	14.5	
51	1,482	50.63	51.8	
52	1,757	11.01	9.5	
53	1,846	10.44	8.6	
54	1,935	15.67	12.3	
55	2,044	33.41	24.8	
56	2,507	9.56	5.8	
57	2,643	7.49	4.3	
58	2,807	9.73	5.3	
59	3,242	15.29	7.1	
60	4,070	14.50	5.4	
61	4,484	14.07	4.8	
62	5,312	21.41	6.1	
63	5,850	15.53	4.0	
64	6,223	36.21	8.8	
65	7,864	14.60	2.8	
66	8,538	14.41	2.6	
67	 10,380	75.00	10.9	Upper Marker
68	13,210	0.00	0.0	
69	13,974	0.00	0.0	
70	14,693	0.00	0.0	
71	15,546	0.00	0.0	
72	16,759	0.00	0.0	
73	17,119	0.00	0.0	
74	18,421	0.00	0.0	
75	18,916	0.00	0.0	

Assay Class: High Sensitivity DNA Assay
 Data Path: C:\...nts and Settings\Bioanalyzer\2012-02-21\2012-02-21_002B.xad


Created: 2/21/2012 11:18:23 AM
 Modified: 2/21/2012 12:09:03 PM

Electropherogram Summary Continued ...

... Peak table for sample 4 : sample 4

Peak	Size [bp]	Conc. [pg/μl]	Molarity [pmol/l]	Observations
76	19,634	0.00	0.0	
77	20,353	0.00	0.0	
78	20,892	0.00	0.0	
79	21,611	0.00	0.0	
80	22,285	0.00	0.0	
81	22,779	0.00	0.0	
82	23,183	0.00	0.0	
83	23,633	0.00	0.0	
84	23,992	0.00	0.0	
85	24,531	0.00	0.0	
86	25,205	0.00	0.0	
87	25,654	0.00	0.0	
88	26,328	0.00	0.0	
89	27,227	0.00	0.0	
90	28,619	0.00	0.0	
91	31,899	0.00	0.0	

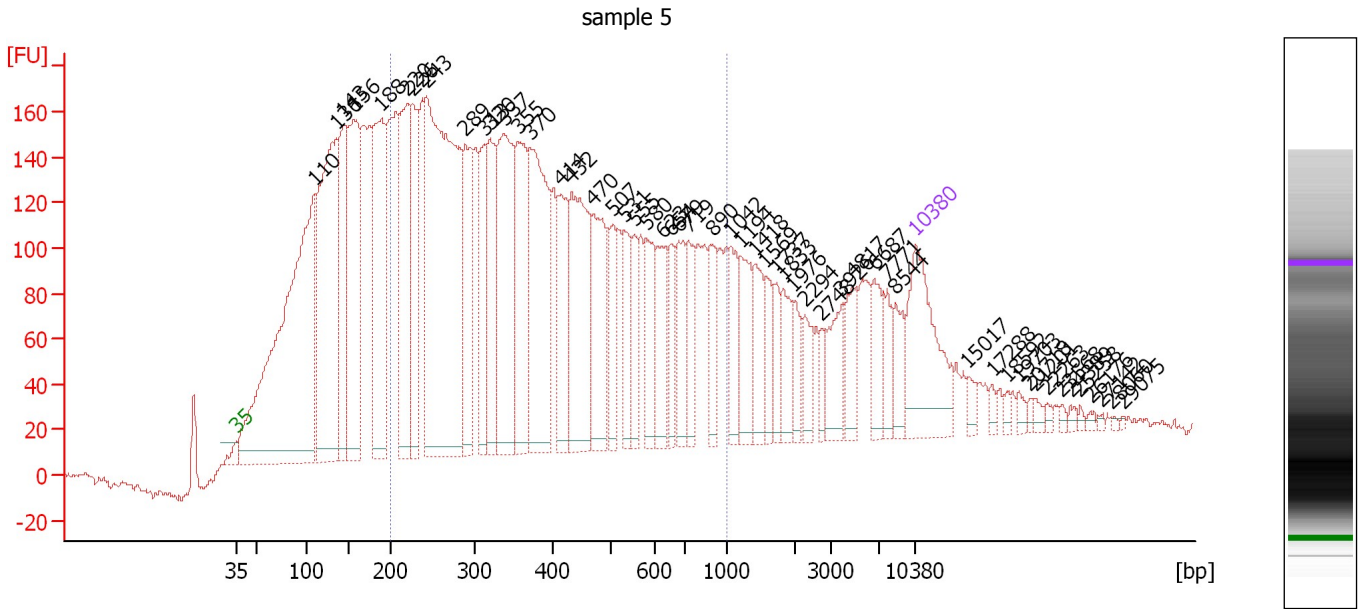
Region table for sample 4 : sample 4

From [bp]	Molarity [pmol/l]	Average Size [bp]	Conc. [pg/μl]	To [bp]	Corr. Area	% of Total	Size distribution in CV [%]	Color
200	16,280.7	407	3,515.85	1,000	5,068.2	62	43.8	

Assay Class: High Sensitivity DNA Assay
 Data Path: C:\...nts and Settings\Bioanalyzer\2012-02-21\2012-02-21_002B.xad

Created: 2/21/2012 11:18:23 AM
 Modified: 2/21/2012 12:09:03 PM

Electropherogram Summary Continued ...



Overall Results for sample 5 : sample 5

Number of peaks found: 54 Corr. Area 1: 4,976.4
 Noise: 2.0

Peak table for sample 5 : sample 5


Peak	Size [bp]	Conc. [pg/μl]	Molarity [pmol/l]	Observations
1	35	125.00	5,411.3	Lower Marker
2	110	528.35	7,305.2	
3	136	306.15	3,409.2	
4	143	129.78	1,370.7	
5	156	190.72	1,852.9	
6	188	187.28	1,511.3	
7	220	137.85	951.3	
8	226	95.31	639.2	
9	243	444.39	2,769.8	
10	289	93.18	488.7	
11	313	78.70	381.5	
12	320	83.22	394.0	
13	337	170.61	767.3	
14	355	102.92	439.0	
15	370	168.89	691.4	
16	414	73.11	267.6	
17	432	137.47	482.3	
18	470	83.94	270.3	
19	507	40.65	121.6	
20	531	43.13	123.0	
21	555	31.32	85.5	
22	580	49.63	129.7	
23	623	40.83	99.4	
24	654	28.19	65.3	
25	679	41.71	93.1	
26	719	39.01	82.2	

Assay Class: High Sensitivity DNA Assay
 Data Path: C:\...nts and Settings\Bioanalyzer\2012-02-21\2012-02-21_002B.xad


Created: 2/21/2012 11:18:23 AM
 Modified: 2/21/2012 12:09:03 PM

Electropherogram Summary Continued ...

... Peak table for sample 5 : sample 5

Peak	Size [bp]	Conc. [pg/µl]	Molarity [pmol/l]	Observations
27	890	34.60	58.9	
28	1,042	31.44	45.7	
29	1,194	41.74	53.0	
30	1,418	32.25	34.5	
31	1,569	22.72	21.9	
32	1,737	16.14	14.1	
33	1,833	25.25	20.9	
34	1,976	18.39	14.1	
35	2,294	18.86	12.5	
36	2,748	10.72	5.9	
37	3,926	30.38	11.7	
38	4,817	25.82	8.1	
39	6,687	26.65	6.0	
40	7,771	15.80	3.1	
41	8,544	21.15	3.7	
42	 10,380	75.00	10.9	Upper Marker
43	15,017	0.00	0.0	
44	17,288	0.00	0.0	
45	18,592	0.00	0.0	
46	19,703	0.00	0.0	
47	20,718	0.00	0.0	
48	21,201	0.00	0.0	
49	22,263	0.00	0.0	
50	23,568	0.00	0.0	
51	24,389	0.00	0.0	
52	25,258	0.00	0.0	
53	26,176	0.00	0.0	
54	27,142	0.00	0.0	
55	28,060	0.00	0.0	
56	29,075	0.00	0.0	

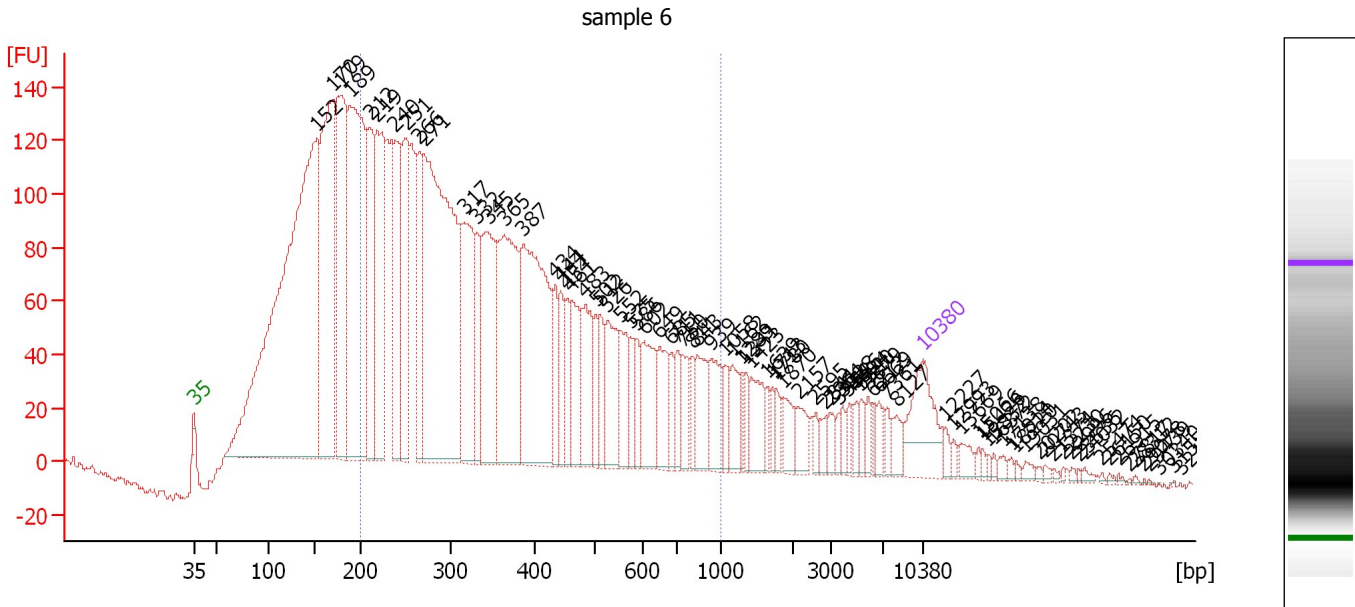
Region table for sample 5 : sample 5

From [bp]	Molarity [pmol/l]	Average Size [bp]	Conc. [pg/µl]	To [bp]	Corr. Area	% of Total	Size distribution in CV [%]	Color
200	11,192.7	422	2,480.05	1,000	4,976.4	56	44.2	

Assay Class: High Sensitivity DNA Assay
 Data Path: C:\...nts and Settings\Bioanalyzer\2012-02-21\2012-02-21_002B.xad

Created: 2/21/2012 11:18:23 AM
 Modified: 2/21/2012 12:09:03 PM

Electropherogram Summary Continued ...



Setpoint Deviations for sample 6 : sample 6

Height Threshold [FU] : 1 Width Threshold [s] : 0.2

Overall Results for sample 6 : sample 6

Number of peaks found: 85 Corr. Area 1: 3,663.0
 Noise: 1.9

Peak table for sample 6 : sample 6


Peak	Size [bp]	Conc. [pg/μl]	Molarity [pmol/l]	Observations
1	35	125.00	5,411.3	Lower Marker
2	152	1,310.24	13,074.8	
3	170	473.78	4,217.0	
4	179	354.67	3,010.0	
5	189	539.36	4,332.7	
6	212	187.60	1,342.3	
7	219	259.91	1,799.2	
8	240	193.07	1,220.7	
9	251	176.84	1,067.9	
10	266	120.29	684.3	
11	271	694.60	3,882.3	
12	317	187.32	896.5	
13	332	69.69	317.7	
14	345	195.35	857.9	
15	365	264.08	1,097.5	
16	387	331.93	1,298.5	
17	434	53.56	186.9	
18	444	51.79	176.8	
19	454	37.51	125.1	
20	461	76.75	252.0	
21	483	92.10	288.7	
22	502	32.76	98.9	

Assay Class: High Sensitivity DNA Assay
 Data Path: C:\...nts and Settings\Bioanalyzer\2012-02-21\2012-02-21_002B.xad

Created: 2/21/2012 11:18:23 AM
 Modified: 2/21/2012 12:09:03 PM

Electropherogram Summary Continued ...

... Peak table for sample 6 : sample 6

Peak	Size [bp]	Conc. [pg/µl]	Molarity [pmol/l]	Observations
23	512	45.91	135.8	
24	526	79.10	227.7	
25	552	60.42	165.9	
26	575	25.49	67.2	
27	586	32.51	84.1	
28	602	74.57	187.7	
29	649	57.54	134.2	
30	685	26.72	59.1	
31	711	31.78	67.7	
32	750	34.94	70.6	
33	811	20.17	37.7	
34	843	54.38	97.8	
35	939	49.86	80.5	
36	1,058	23.92	34.3	
37	1,162	33.39	43.5	
38	1,289	8.33	9.8	
39	1,341	15.99	18.1	
40	1,423	42.86	45.6	
41	1,639	9.36	8.7	
42	1,713	9.05	8.0	
43	1,780	13.49	11.5	
44	1,870	25.86	21.0	
45	2,157	24.06	16.9	
46	2,595	12.54	7.3	
47	2,841	9.62	5.1	
48	2,964	15.21	7.8	
49	3,554	6.91	2.9	
50	3,928	10.16	3.9	
51	4,426	8.77	3.0	
52	4,924	10.16	3.1	
53	5,340	11.42	3.2	
54	5,879	12.51	3.2	
55	6,212	7.14	1.7	
56	6,669	12.99	3.0	
57	7,361	11.60	2.4	
58	8,127	15.78	2.9	
59	 10,380	75.00	10.9	Upper Marker
60	12,227	0.00	0.0	
61	12,993	0.00	0.0	
62	13,669	0.00	0.0	
63	15,066	0.00	0.0	
64	15,426	0.00	0.0	
65	15,832	0.00	0.0	
66	16,372	0.00	0.0	
67	17,138	0.00	0.0	
68	17,814	0.00	0.0	
69	18,220	0.00	0.0	
70	19,031	0.00	0.0	
71	20,202	0.00	0.0	
72	20,743	0.00	0.0	
73	21,374	0.00	0.0	
74	22,230	0.00	0.0	
75	22,996	0.00	0.0	

Assay Class: High Sensitivity DNA Assay
 Data Path: C:\...nts and Settings\Bioanalyzer\2012-02-21\2012-02-21_002B.xad


Created: 2/21/2012 11:18:23 AM
 Modified: 2/21/2012 12:09:03 PM

Electropherogram Summary Continued ...

... Peak table for sample 6 : sample 6

Peak	Size [bp]	Conc. [pg/μl]	Molarity [pmol/l]	Observations
76	23,536	0.00	0.0	
77	24,032	0.00	0.0	
78	25,474	0.00	0.0	
79	26,150	0.00	0.0	
80	26,915	0.00	0.0	
81	27,817	0.00	0.0	
82	28,312	0.00	0.0	
83	29,078	0.00	0.0	
84	29,439	0.00	0.0	
85	30,340	0.00	0.0	
86	31,556	0.00	0.0	
87	32,142	0.00	0.0	

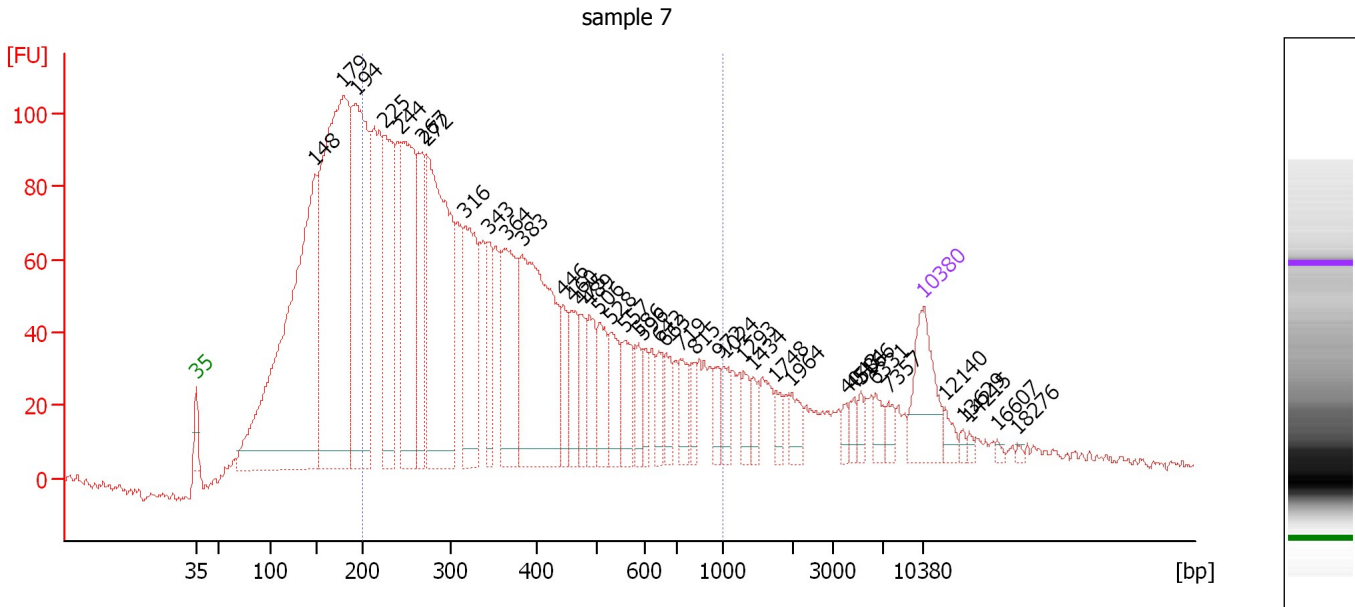
Region table for sample 6 : sample 6

From [bp]	Molarity [pmol/l]	Average Size [bp]	Conc. [pg/μl]	To [bp]	Corr. Area	% of Total	Size distribution in CV [%]	Color
200	20,124.5	393	4,219.25	1,000	3,663.0	60	44.2	

Assay Class: High Sensitivity DNA Assay
 Data Path: C:\...nts and Settings\Bioanalyzer\2012-02-21\2012-02-21_002B.xad

Created: 2/21/2012 11:18:23 AM
 Modified: 2/21/2012 12:09:03 PM

Electropherogram Summary Continued ...



Overall Results for sample 7 : sample 7

Number of peaks found: 40 Corr. Area 1: 2,638.7
 Noise: 1.3

Peak table for sample 7 : sample 7

Peak	Size [bp]	Conc. [pg/μl]	Molarity [pmol/l]	Observations
1	35	125.00	5,411.3	Lower Marker
2	148	875.07	8,962.0	
3	179	840.14	7,096.9	
4	194	466.18	3,648.0	
5	225	239.09	1,613.5	
6	244	329.64	2,045.9	
7	267	127.65	723.6	
8	272	461.50	2,570.3	
9	316	189.85	910.9	
10	343	81.74	361.1	
11	364	191.87	797.6	
12	383	352.25	1,391.9	
13	446	52.67	179.1	
14	460	64.48	212.6	
15	475	42.57	135.9	
16	489	56.28	174.5	
17	506	64.19	192.4	
18	528	63.43	182.1	
19	557	52.83	143.6	
20	586	31.27	80.8	
21	596	27.87	70.8	
22	642	29.08	68.7	
23	663	32.01	73.1	
24	719	39.81	83.9	
25	815	23.06	42.9	
26	972	23.10	36.0	

Assay Class: High Sensitivity DNA Assay
 Data Path: C:\...nts and Settings\Bioanalyzer\2012-02-21\2012-02-21_002B.xad


Created: 2/21/2012 11:18:23 AM
 Modified: 2/21/2012 12:09:03 PM

Electropherogram Summary Continued ...

... Peak table for sample 7 : sample 7

Peak	Size [bp]	Conc. [pg/μl]	Molarity [pmol/l]	Observations
27	1,024	25.47	37.7	
28	1,293	23.60	27.7	
29	1,434	18.13	19.2	
30	1,748	16.31	14.1	
31	1,964	21.72	16.8	
32	4,043	9.33	3.5	
33	4,584	12.30	4.1	
34	5,166	10.65	3.1	
35	6,331	17.06	4.1	
36	7,357	13.28	2.7	
37	10,380	75.00	10.9	Upper Marker
38	12,140	0.00	0.0	
39	13,629	0.00	0.0	
40	14,215	0.00	0.0	
41	16,607	0.00	0.0	
42	18,276	0.00	0.0	

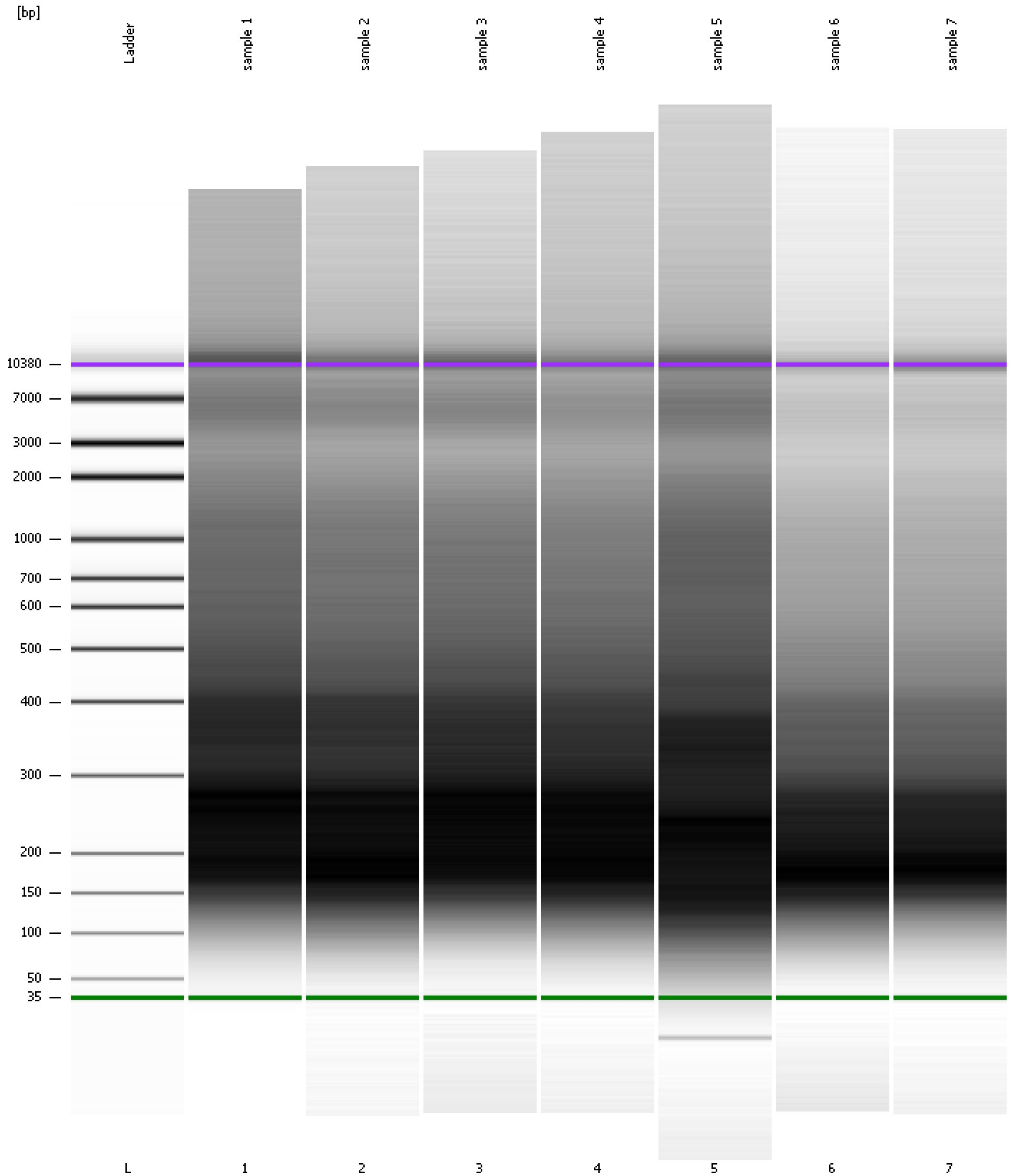
Region table for sample 7 : sample 7

From [bp]	Molarity [pmol/l]	Average Size [bp]	Conc. [pg/μl]	To [bp]	Corr. Area	% of Total	Size distribution in CV [%]	Color
200	17,705.8	388	3,677.69	1,000	2,638.7	61	44.2	

Assay Class: High Sensitivity DNA Assay
Data Path: C:\...nts and Settings\Bioanalyzer\2012-02-21\2012-02-21_002B.xad

Created: 2/21/2012 11:18:23 AM
Modified: 2/21/2012 12:09:03 PM

Gel Image



Assay Class: High Sensitivity DNA Assay
 Data Path: C:\...nts and Settings\Bioanalyzer\2012-02-21\2012-02-21_002B.xad

Created: 2/21/2012 11:18:23 AM
 Modified: 2/21/2012 12:09:03 PM

Run Logbook

Description	Number	Source	Category	Sub Category	Time	Time Zone	User	Host
Run aborted on port 1		Instrument	Run		2/21/2012 11:53:03 AM	(GMT --08:00) Pacific Standard Time	UC Davis	D8XSMGH1
Run started on port 1 (File: C:\Documents and Settings\Bioanalyzer\2012-02-21\2012-02-21_002.xad)		Instrument	Run		2/21/2012 11:18:30 AM	(GMT --08:00) Pacific Standard Time	UC Davis	D8XSMGH1
Product Number : G2938B		Instrument	Run		2/21/2012 11:18:30 AM	(GMT --08:00) Pacific Standard Time	UC Davis	D8XSMGH1
Name :		Instrument	Run		2/21/2012 11:18:30 AM	(GMT --08:00) Pacific Standard Time	UC Davis	D8XSMGH1
Vendor : Agilent Technologies		Instrument	Run		2/21/2012 11:18:30 AM	(GMT --08:00) Pacific Standard Time	UC Davis	D8XSMGH1
Serial# : DE13701086		Instrument	Run		2/21/2012 11:18:30 AM	(GMT --08:00) Pacific Standard Time	UC Davis	D8XSMGH1
Firmware : C.01.069		Instrument	Run		2/21/2012 11:18:30 AM	(GMT --08:00) Pacific Standard Time	UC Davis	D8XSMGH1
Cartridge : Electrode		Instrument	Run		2/21/2012 11:18:30 AM	(GMT --08:00) Pacific Standard Time	UC Davis	D8XSMGH1