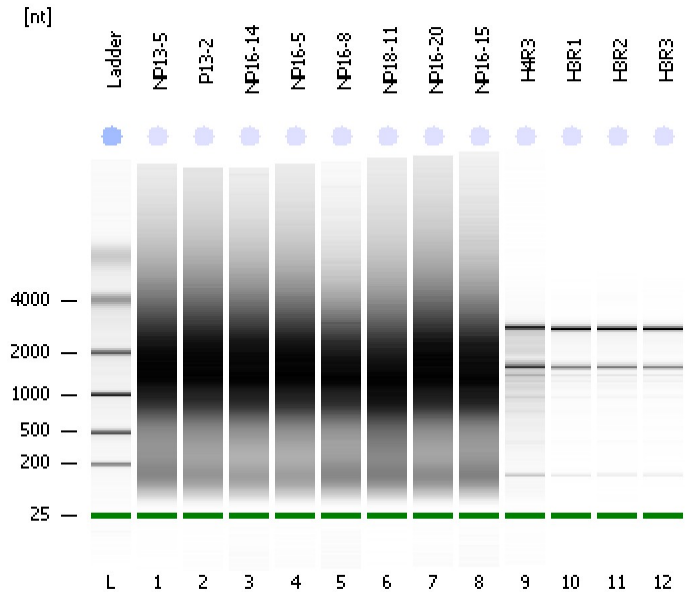


Assay Class: Eukaryote Total RNA Nano  
Data Path: C:\...ents and Settings\Bioanalyzer\2012-02-21\2012-02-21\_003.xad

Created: 2/21/2012 12:17:51 PM  
Modified: 2/21/2012 1:35:25 PM

Electrophoresis File Run Summary



Instrument Information:

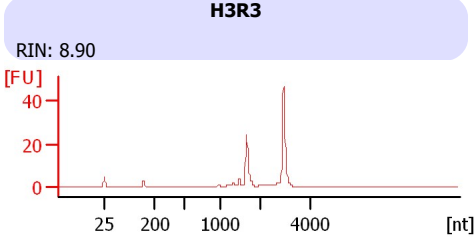
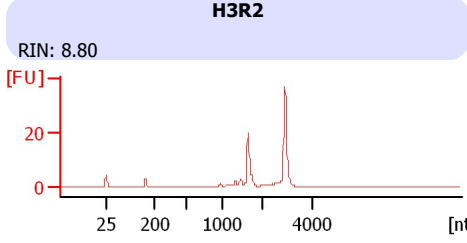
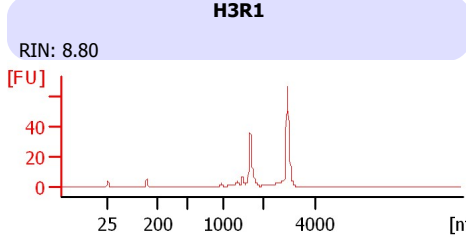
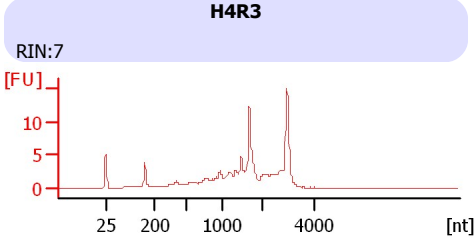
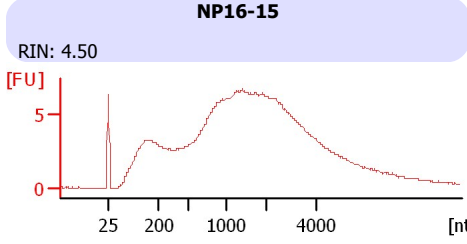
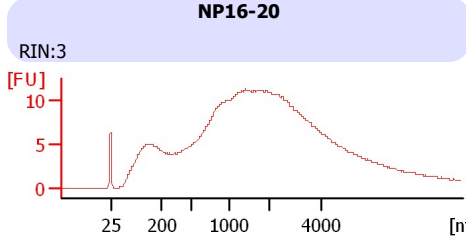
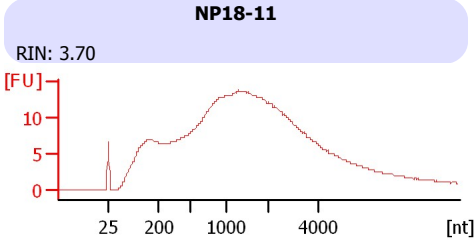
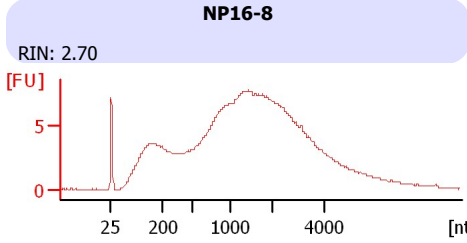
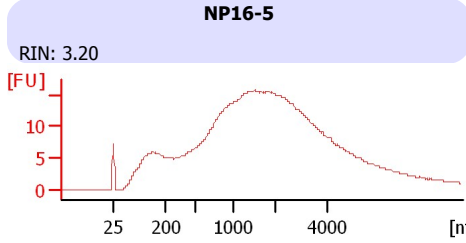
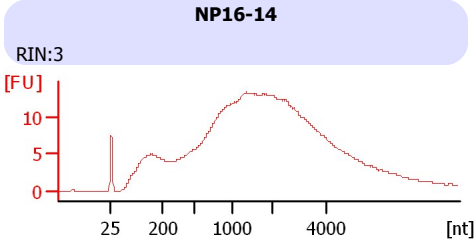
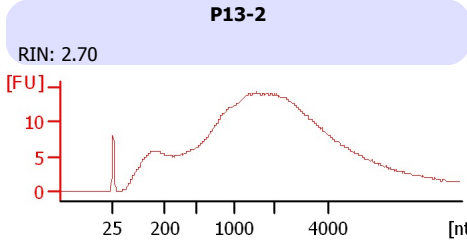
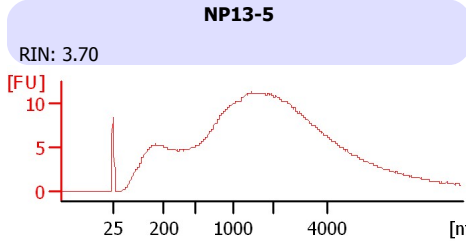
Instrument Name: DE13701086      Firmware: C.01.069  
Serial#: DE13701086      Type: G2938B

Assay Information:

Assay Origin Path: C:\Program Files\Agilent\2100 bioanalyzer\2100 expert\assays\RNA\Eukaryote Total RNA Nano Series II.xsy  
Assay Class: Eukaryote Total RNA Nano  
Version: 2.6  
Assay Comments: Total RNA Analysis ng sensitivity (Eukaryote)  
© Copyright 2003 - 2009 Agilent Technologies, Inc.

Chip Information:

Chip Lot #:   
Reagent Kit Lot #:   
Chip Comments:



Assay Class: Eukaryote Total RNA Nano  
 Data Path: C:\...ents and Settings\Bioanalyzer\2012-02-21\2012-02-21\_003.xad

Created: 2/21/2012 12:17:51 PM  
 Modified: 2/21/2012 1:35:25 PM

**Electrophoresis File Run Summary (Chip Summary)**

Sample Name	Sample Comment	Status	Result Label	Result Color
NP13-5		✓	RIN: 3.70	
P13-2		✓	RIN: 2.70	
NP16-14		✓	RIN:3	
NP16-5		✓	RIN: 3.20	
NP16-8		✓	RIN: 2.70	
NP18-11		✓	RIN: 3.70	
NP16-20		✓	RIN:3	
NP16-15		✓	RIN: 4.50	
H4R3		✓	RIN:7	
H3R1		✓	RIN: 8.80	
H3R2		✓	RIN: 8.80	
H3R3		✓	RIN: 8.90	
Ladder		✓	All Other Samples	

**Chip Lot #**

**Reagent Kit Lot #**

**Chip Comments :**

Assay Class: Eukaryote Total RNA Nano  
Data Path: C:\...ents and Settings\Bioanalyzer\2012-02-21\2012-02-21\_003.xad

Created: 2/21/2012 12:17:51 PM  
Modified: 2/21/2012 1:35:25 PM

## Electrophoresis Assay Details

### General Analysis Settings

Number of Available Sample and Ladder Wells (Max.) : 13  
Minimum Visible Range [s] : 17  
Maximum Visible Range [s] : 70  
Start Analysis Time Range [s] : 19  
End Analysis Time Range [s] : 69  
Ladder Concentration [ng/μl] : 150  
Lower Marker Concentration [ng/μl] : 0  
Upper Marker Concentration [ng/μl] : 0  
Used Lower Marker for Quantitation  
Standard Curve Fit is Logarithmic  
Show Data Aligned to Lower Marker

### Integrator Settings

Integration Start Time [s] : 19  
Integration End Time [s] : 69  
Slope Threshold : 0.6  
Height Threshold [FU] : 0.5  
Area Threshold : 0.2  
Width Threshold [s] : 0.5  
Baseline Plateau [s] : 6

### Filter Settings

Filter Width [s] : 0.5  
Polynomial Order : 4

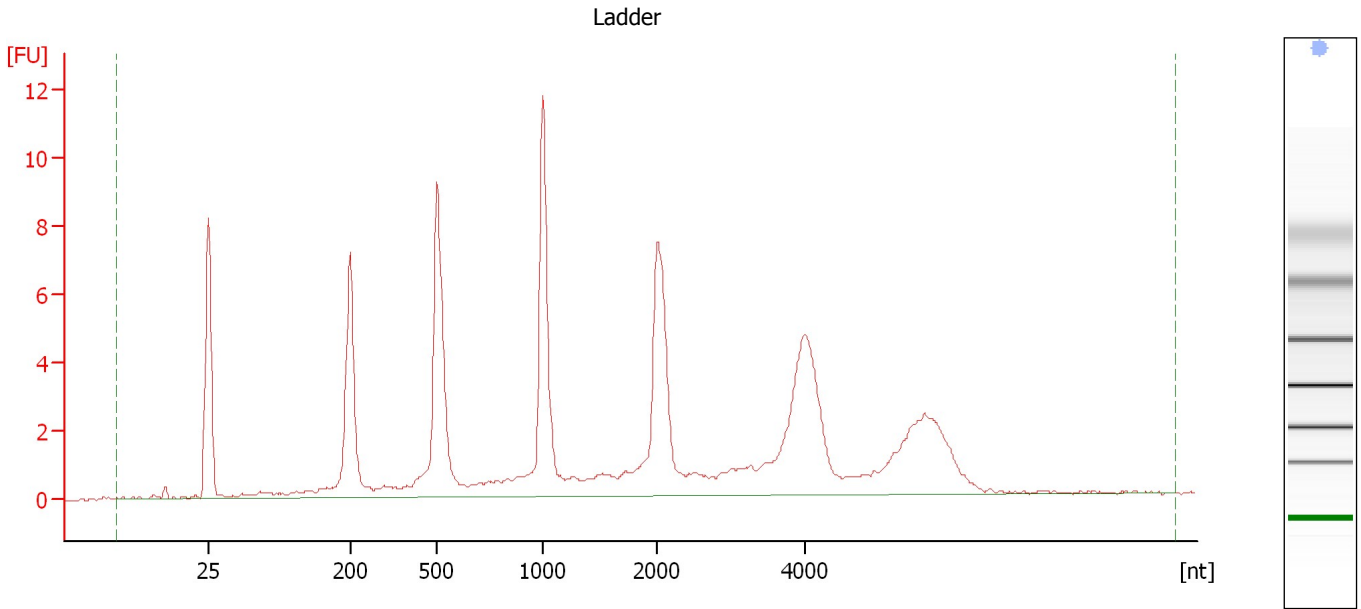
### Ladder

Ladder Peak	Size
1	25
2	200
3	500
4	1000
5	2000
6	4000

Assay Class: Eukaryote Total RNA Nano  
Data Path: C:\...ents and Settings\Bioanalyzer\2012-02-21\2012-02-21\_003.xad

Created: 2/21/2012 12:17:51 PM  
Modified: 2/21/2012 1:35:25 PM

**Electropherogram Summary**



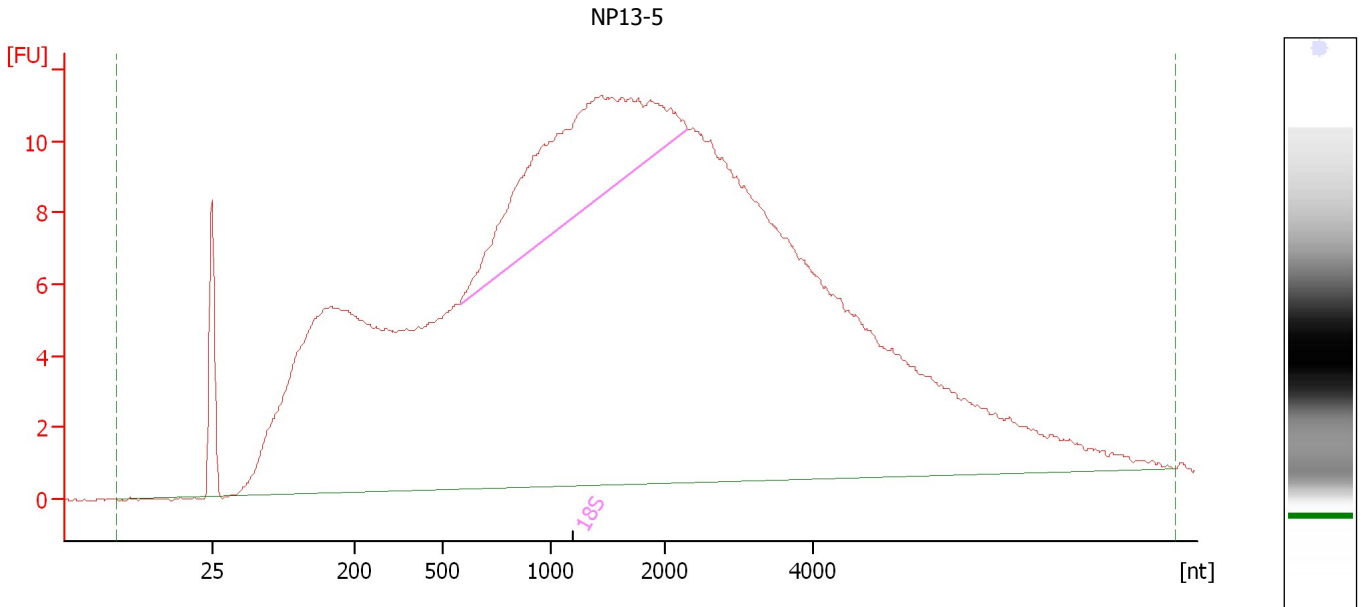
**Overall Results for Ladder**

RNA Area:	100.4	Result Flagging Color:	<span style="background-color: #add8e6; border: 1px solid black; display: inline-block; width: 20px; height: 10px;"></span>
RNA Concentration:	150 ng/μl	Result Flagging Label:	All Other Samples

Assay Class: Eukaryote Total RNA Nano  
 Data Path: C:\...ents and Settings\Bioanalyzer\2012-02-21\2012-02-21\_003.xad

Created: 2/21/2012 12:17:51 PM  
 Modified: 2/21/2012 1:35:25 PM

**Electropherogram Summary Continued ...**



**Overall Results for sample 1 : NP13-5**

RNA Area:	532.3	RNA Integrity Number (RIN):	3.7 (B.02.08, Anomaly Threshold(s) manually adapted)
RNA Concentration:	795 ng/μl	Result Flagging Color:	<span style="background-color: #ccccff; border: 1px solid black; display: inline-block; width: 20px; height: 10px;"></span>
rRNA Ratio [28s / 18s]:	0.0	Result Flagging Label:	RIN: 3.70

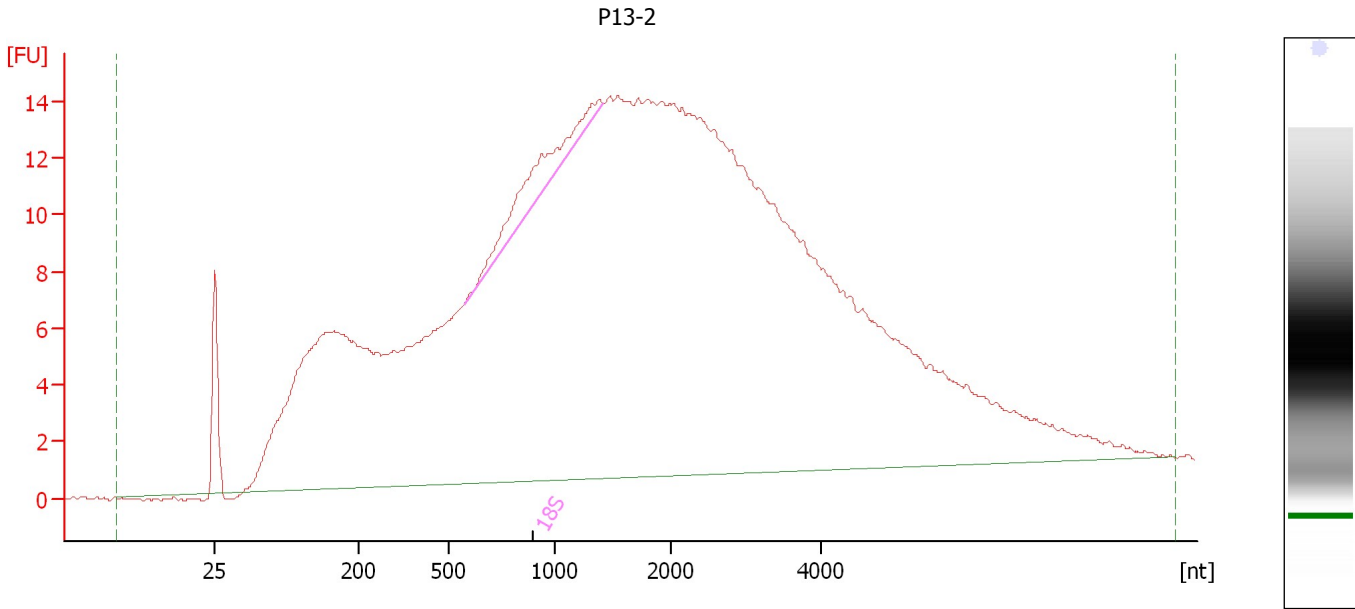
**Fragment table for sample 1 : NP13-5**

Name	Start Size [nt]	End Size [nt]	Area	% of total Area
18S	576	2,296	47.5	8.9

Assay Class: Eukaryote Total RNA Nano  
 Data Path: C:\...ents and Settings\Bioanalyzer\2012-02-21\2012-02-21\_003.xad

Created: 2/21/2012 12:17:51 PM  
 Modified: 2/21/2012 1:35:25 PM

**Electropherogram Summary Continued ...**



**Overall Results for sample 2 : P13-2**

RNA Area:	640.4	RNA Integrity Number (RIN):	2.7 (B.02.08, Anomaly Threshold(s) manually adapted)
RNA Concentration:	957 ng/μl	Result Flagging Color:	<span style="background-color: #ccccff; border: 1px solid black; display: inline-block; width: 20px; height: 10px;"></span>
rRNA Ratio [28s / 18s]:	0.0	Result Flagging Label:	RIN: 2.70

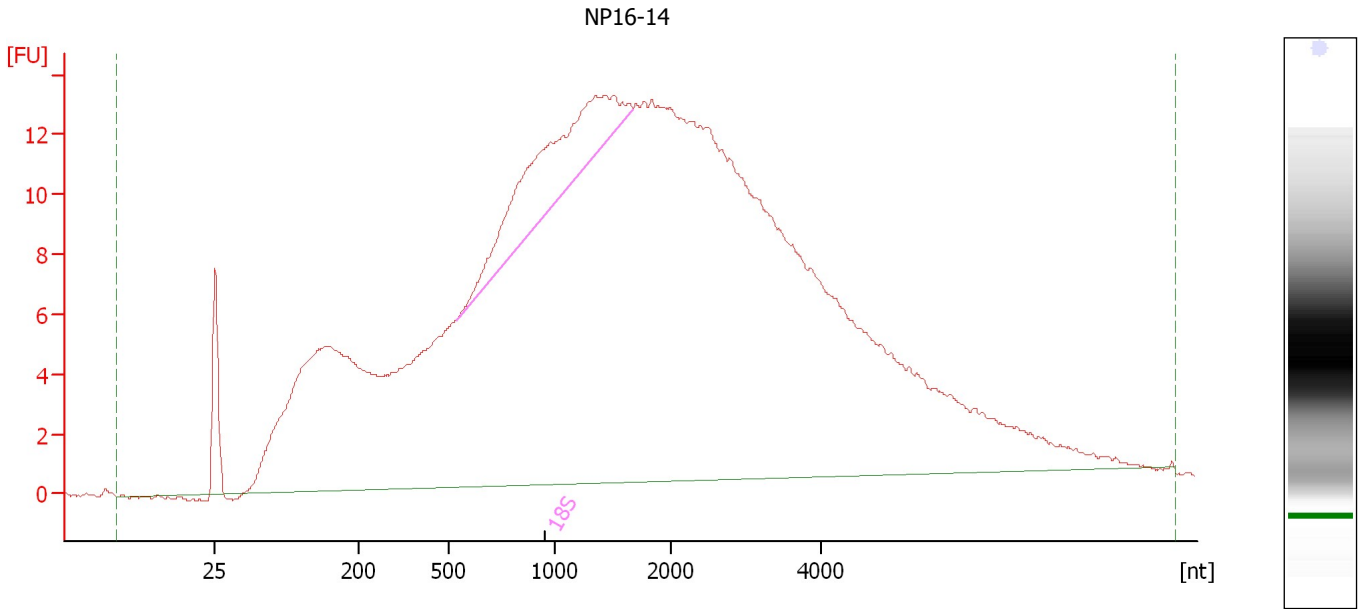
**Fragment table for sample 2 : P13-2**

Name	Start Size [nt]	End Size [nt]	Area	% of total Area
18S	573	1,408	10.9	1.7

Assay Class: Eukaryote Total RNA Nano  
 Data Path: C:\...ents and Settings\Bioanalyzer\2012-02-21\2012-02-21\_003.xad

Created: 2/21/2012 12:17:51 PM  
 Modified: 2/21/2012 1:35:25 PM

**Electropherogram Summary Continued ...**



**Overall Results for sample 3 : NP16-14**

RNA Area:	587.2	RNA Integrity Number (RIN):	3 (B.02.08, Anomaly Threshold(s) manually adapted)
RNA Concentration:	877 ng/μl	Result Flagging Color:	<span style="background-color: #ccccff; border: 1px solid black; display: inline-block; width: 20px; height: 10px;"></span>
rRNA Ratio [28s / 18s]:	0.0	Result Flagging Label:	RIN:3

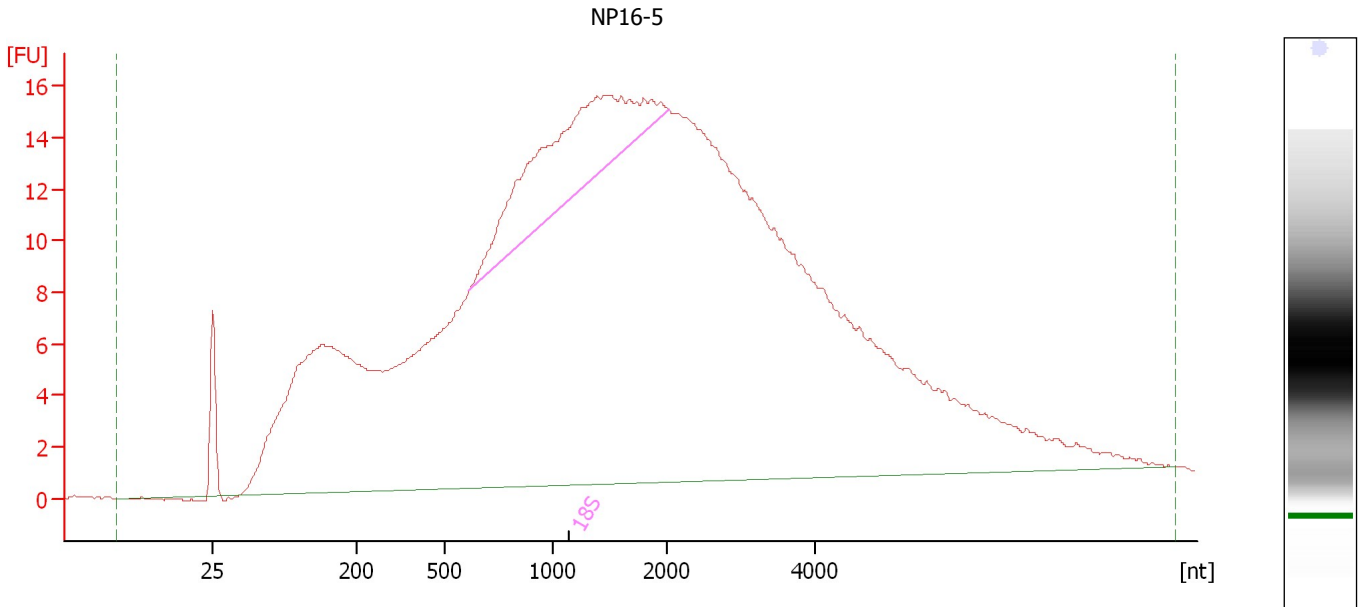
**Fragment table for sample 3 : NP16-14**

Name	Start Size [nt]	End Size [nt]	Area	% of total Area
18S	538	1,666	29.3	5.0

Assay Class: Eukaryote Total RNA Nano  
 Data Path: C:\...ents and Settings\Bioanalyzer\2012-02-21\2012-02-21\_003.xad

Created: 2/21/2012 12:17:51 PM  
 Modified: 2/21/2012 1:35:25 PM

**Electropherogram Summary Continued ...**



**Overall Results for sample 4 : NP16-5**

RNA Area:	696.3	RNA Integrity Number (RIN):	3.2 (B.02.08, Anomaly Threshold(s) manually adapted)
RNA Concentration:	1,040 ng/μl	Result Flagging Color:	<span style="background-color: #ccccff; border: 1px solid black; display: inline-block; width: 20px; height: 10px;"></span>
rRNA Ratio [28s / 18s]:	0.0	Result Flagging Label:	RIN: 3.20

**Fragment table for sample 4 : NP16-5**

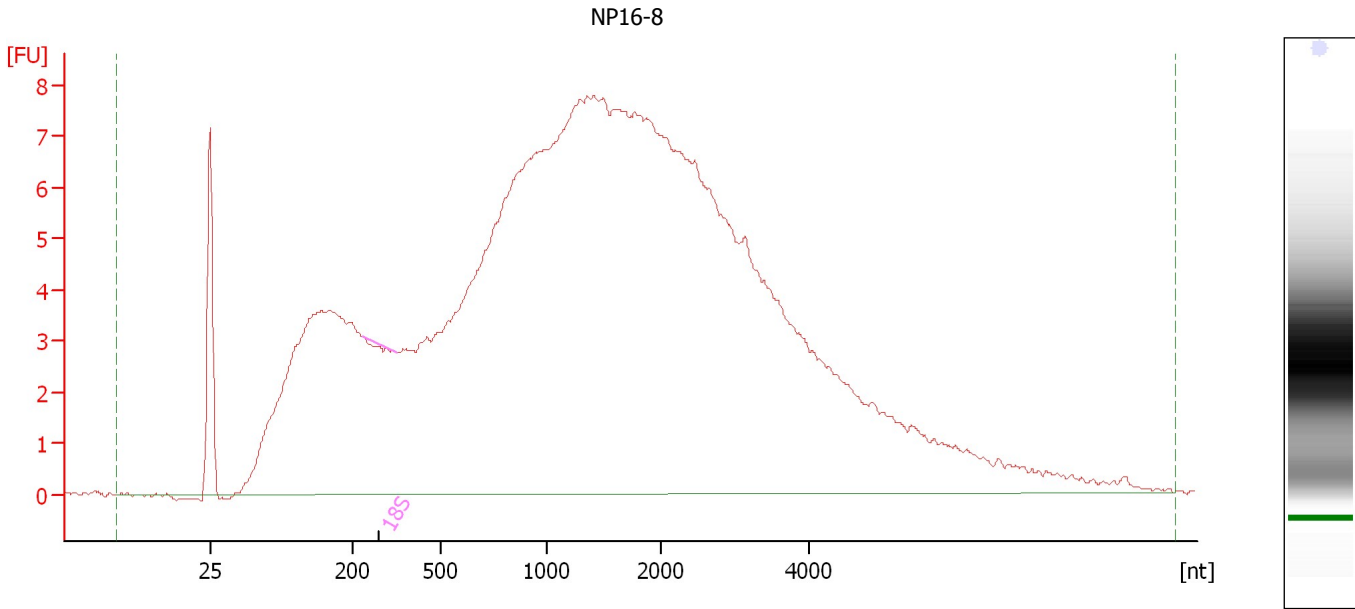
Name	Start Size [nt]	End Size [nt]	Area	% of total Area
18S	613	2,022	46.9	6.7



Assay Class: Eukaryote Total RNA Nano  
Data Path: C:\...ents and Settings\Bioanalyzer\2012-02-21\2012-02-21\_003.xad

Created: 2/21/2012 12:17:51 PM  
Modified: 2/21/2012 1:35:25 PM

**Electropherogram Summary Continued ...**



**Overall Results for sample 5 : NP16-8**

RNA Area:	343.7	RNA Integrity Number (RIN):	2.7 (B.02.08)
RNA Concentration:	513 ng/μl	Result Flagging Color:	<span style="background-color: #ccccff; border: 1px solid black; display: inline-block; width: 20px; height: 10px;"></span>
rRNA Ratio [28s / 18s]:	0.0	Result Flagging Label:	RIN: 2.70

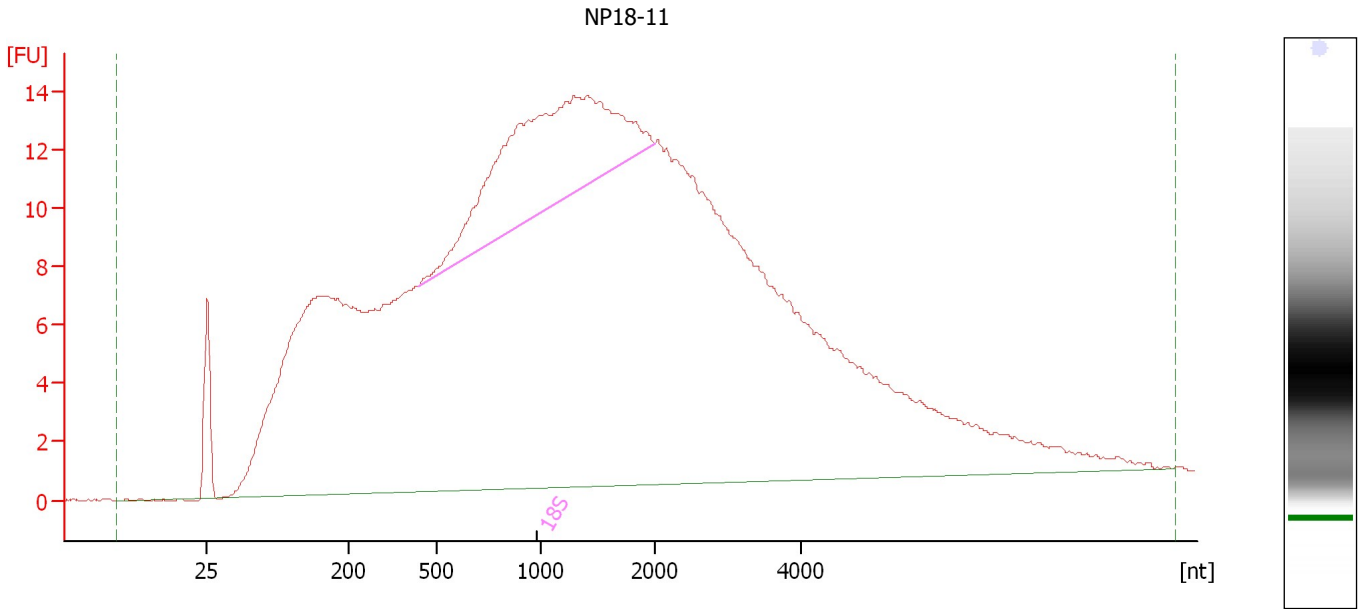
**Fragment table for sample 5 : NP16-8**

Name	Start Size [nt]	End Size [nt]	Area	% of total Area
18S	237	352	0.0	0.0

Assay Class: Eukaryote Total RNA Nano  
 Data Path: C:\...ents and Settings\Bioanalyzer\2012-02-21\2012-02-21\_003.xad

Created: 2/21/2012 12:17:51 PM  
 Modified: 2/21/2012 1:35:25 PM

**Electropherogram Summary Continued ...**



**Overall Results for sample 6 : NP18-11**

RNA Area:	654.4	RNA Integrity Number (RIN):	3.7 (B.02.08, Anomaly Threshold(s) manually adapted)
RNA Concentration:	978 ng/μl	Result Flagging Color:	<span style="background-color: #ccccff; border: 1px solid black; display: inline-block; width: 20px; height: 10px;"></span>
rRNA Ratio [28s / 18s]:	0.0	Result Flagging Label:	RIN: 3.70

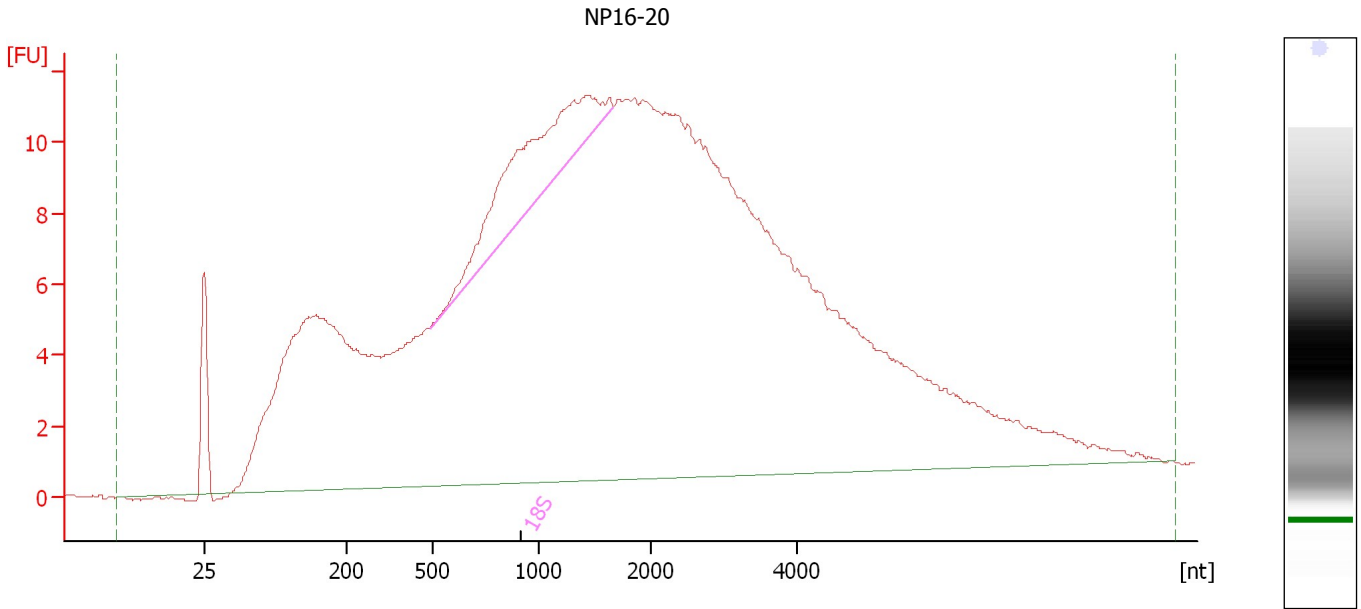
**Fragment table for sample 6 : NP18-11**

Name	Start Size [nt]	End Size [nt]	Area	% of total Area
18S	439	1,998	57.0	8.7

Assay Class: Eukaryote Total RNA Nano  
 Data Path: C:\...ents and Settings\Bioanalyzer\2012-02-21\2012-02-21\_003.xad

Created: 2/21/2012 12:17:51 PM  
 Modified: 2/21/2012 1:35:25 PM

**Electropherogram Summary Continued ...**



**Overall Results for sample 7 : NP16-20**

RNA Area:	527.5	RNA Integrity Number (RIN):	3 (B.02.08, Anomaly Threshold(s) manually adapted)
RNA Concentration:	788 ng/μl	Result Flagging Color:	<span style="background-color: #ccccff; border: 1px solid black; display: inline-block; width: 20px; height: 10px;"></span>
rRNA Ratio [28s / 18s]:	0.0	Result Flagging Label:	RIN:3

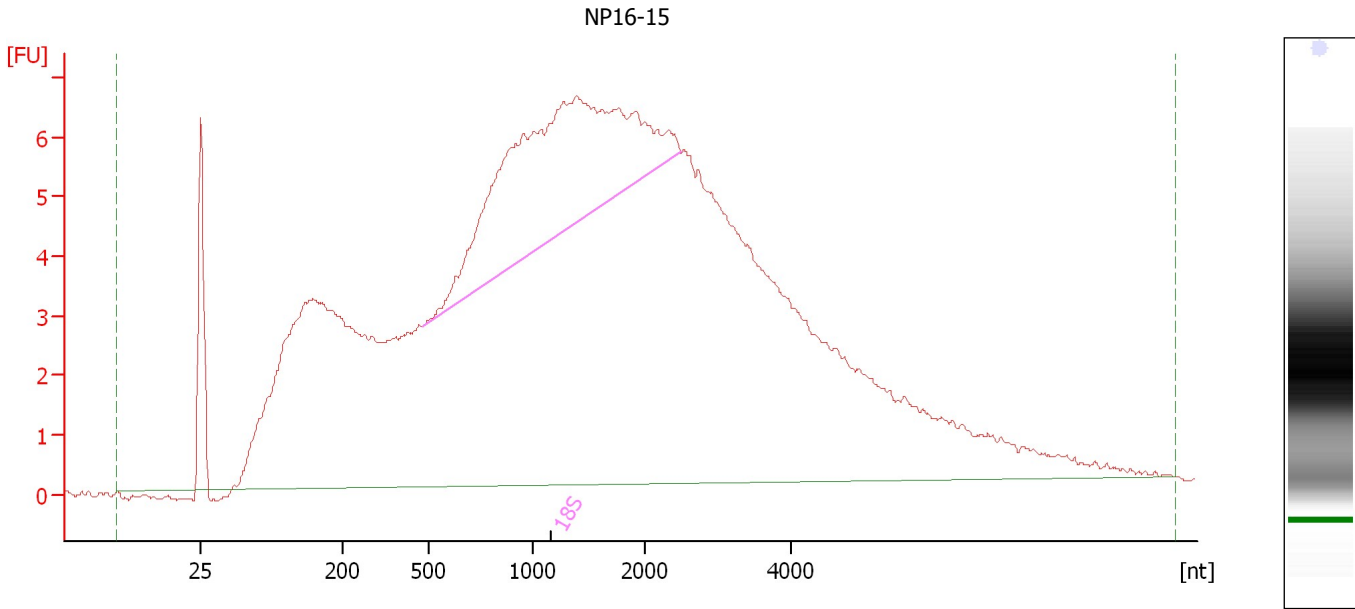
**Fragment table for sample 7 : NP16-20**

Name	Start Size [nt]	End Size [nt]	Area	% of total Area
18S	490	1,667	24.6	4.7

Assay Class: Eukaryote Total RNA Nano  
Data Path: C:\...ents and Settings\Bioanalyzer\2012-02-21\2012-02-21\_003.xad

Created: 2/21/2012 12:17:51 PM  
Modified: 2/21/2012 1:35:25 PM

**Electropherogram Summary Continued ...**



**Overall Results for sample 8 : NP16-15**

RNA Area:	307.0	RNA Integrity Number (RIN):	4.5 (B.02.08)
RNA Concentration:	459 ng/μl	Result Flagging Color:	<span style="background-color: #ccccff; border: 1px solid black; display: inline-block; width: 20px; height: 10px;"></span>
rRNA Ratio [28s / 18s]:	0.0	Result Flagging Label:	RIN: 4.50

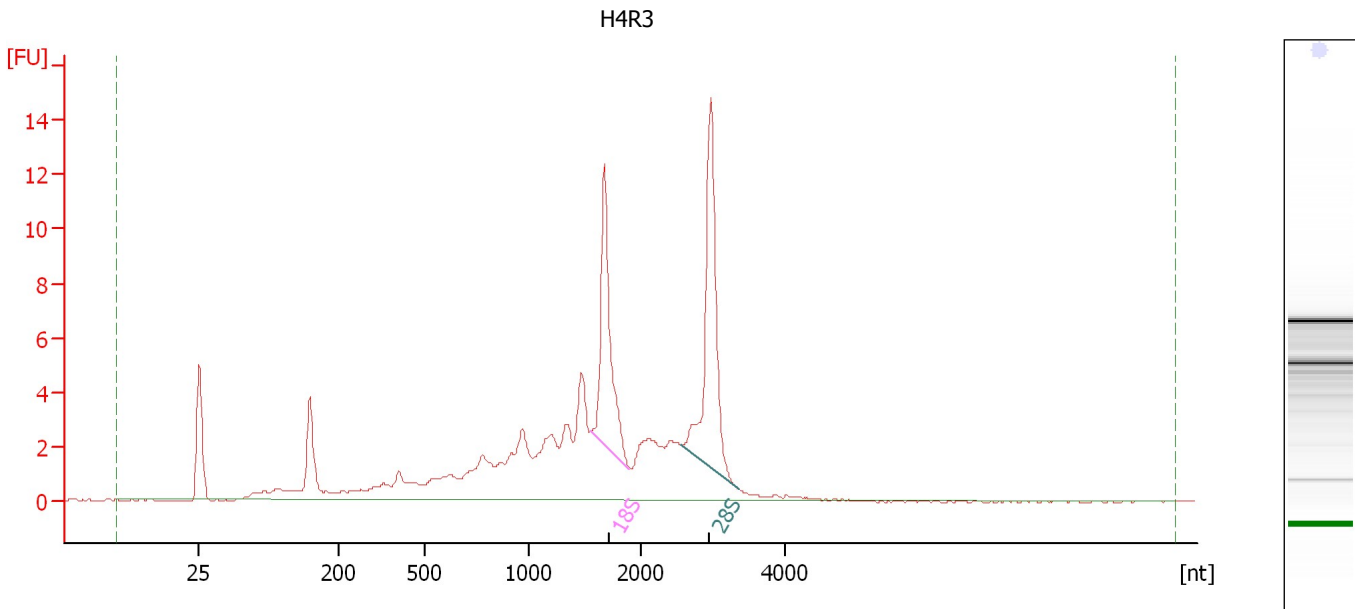
**Fragment table for sample 8 : NP16-15**

Name	Start Size [nt]	End Size [nt]	Area	% of total Area
18S	484	2,477	38.1	12.4

Assay Class: Eukaryote Total RNA Nano  
 Data Path: C:\...ents and Settings\Bioanalyzer\2012-02-21\2012-02-21\_003.xad

Created: 2/21/2012 12:17:51 PM  
 Modified: 2/21/2012 1:35:25 PM

**Electropherogram Summary Continued ...**



**Overall Results for sample 9 : H4R3**

RNA Area:	103.9	RNA Integrity Number (RIN):	7 (B.02.08)
RNA Concentration:	155 ng/μl	Result Flagging Color:	<span style="background-color: #ccccff; border: 1px solid black; display: inline-block; width: 20px; height: 10px;"></span>
rRNA Ratio [28s / 18s]:	1.3	Result Flagging Label:	RIN:7

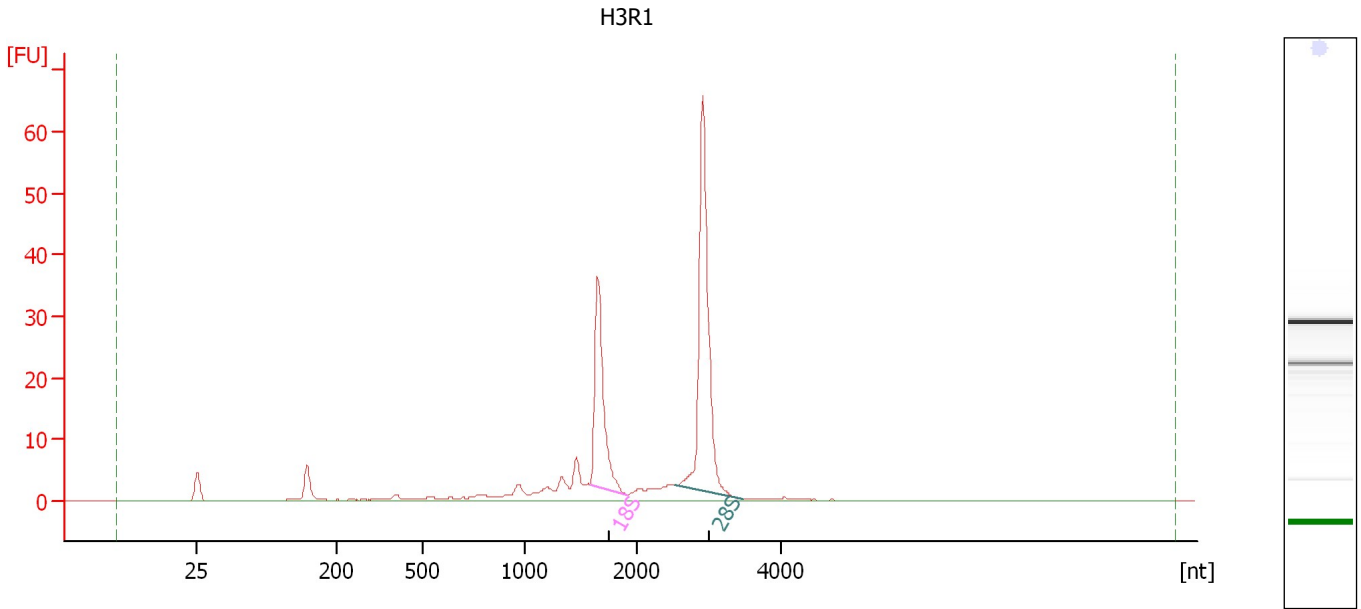
**Fragment table for sample 9 : H4R3**

Name	Start Size [nt]	End Size [nt]	Area	% of total Area
18S	1,544	1,896	12.4	11.9
28S	2,550	3,367	16.0	15.4

Assay Class: Eukaryote Total RNA Nano  
 Data Path: C:\...ents and Settings\Bioanalyzer\2012-02-21\2012-02-21\_003.xad

Created: 2/21/2012 12:17:51 PM  
 Modified: 2/21/2012 1:35:25 PM

**Electropherogram Summary Continued ...**



**Overall Results for sample 10 : H3R1**

RNA Area:	179.6	RNA Integrity Number (RIN):	8.8 (B.02.08)
RNA Concentration:	268 ng/μl	Result Flagging Color:	<span style="background-color: #ccccff; border: 1px solid black; display: inline-block; width: 20px; height: 10px;"></span>
rRNA Ratio [28s / 18s]:	1.9	Result Flagging Label:	RIN: 8.80

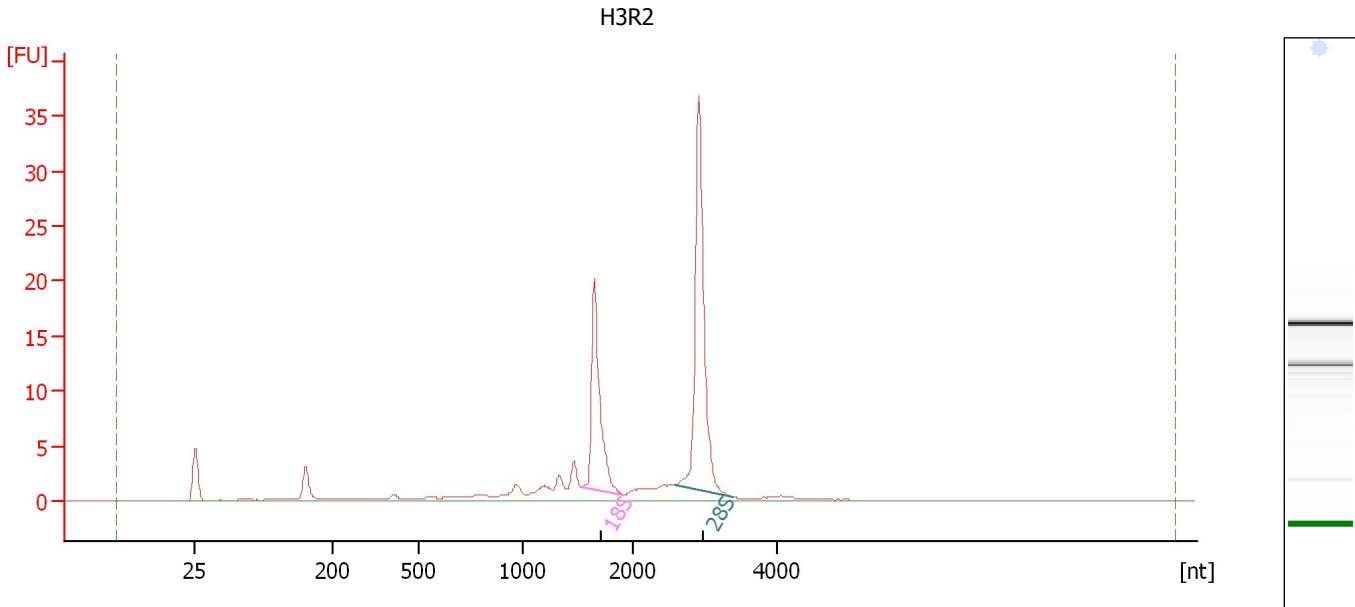
**Fragment table for sample 10 : H3R1**

Name	Start Size [nt]	End Size [nt]	Area	% of total Area
18S	1,578	1,903	36.3	20.2
28S	2,534	3,474	68.0	37.9

Assay Class: Eukaryote Total RNA Nano  
 Data Path: C:\...ents and Settings\Bioanalyzer\2012-02-21\2012-02-21\_003.xad

Created: 2/21/2012 12:17:51 PM  
 Modified: 2/21/2012 1:35:25 PM

**Electropherogram Summary Continued ...**



**Overall Results for sample 11 : H3R2**

RNA Area:	98.2	RNA Integrity Number (RIN):	8.8 (B.02.08)
RNA Concentration:	147 ng/μl	Result Flagging Color:	<span style="background-color: #ccccff; border: 1px solid black; display: inline-block; width: 20px; height: 10px;"></span>
rRNA Ratio [28s / 18s]:	1.8	Result Flagging Label:	RIN: 8.80

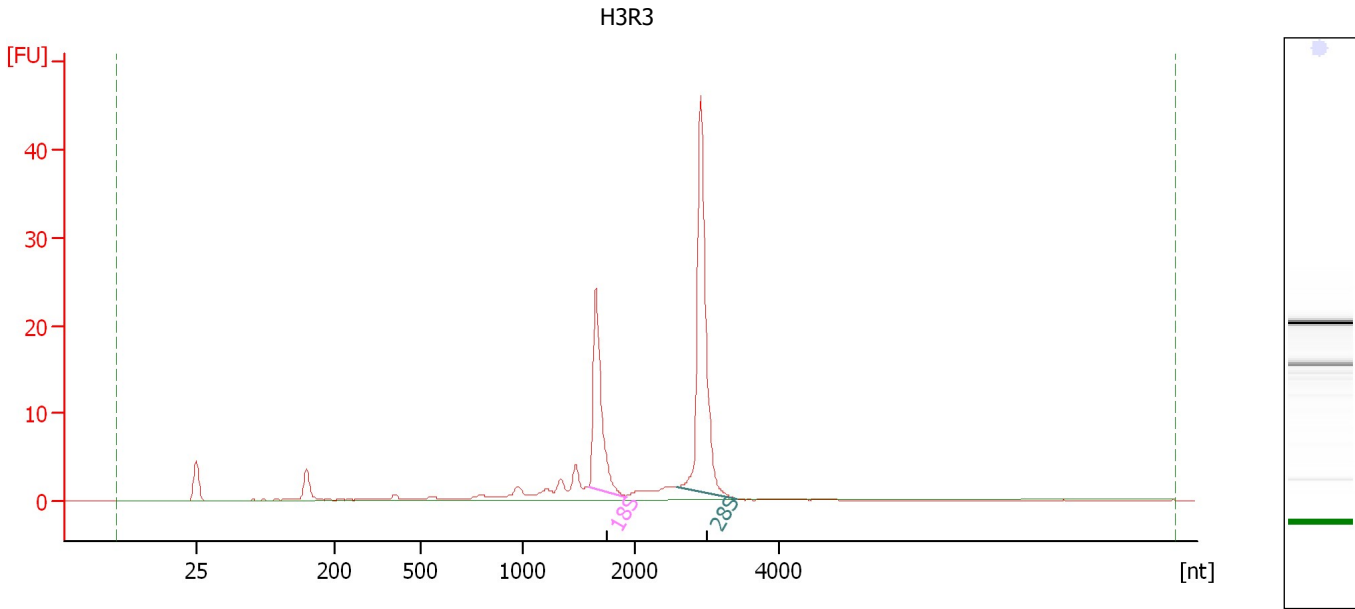
**Fragment table for sample 11 : H3R2**

Name	Start Size [nt]	End Size [nt]	Area	% of total Area
18S	1,536	1,910	20.2	20.6
28S	2,593	3,402	37.2	37.9

Assay Class: Eukaryote Total RNA Nano  
Data Path: C:\...ents and Settings\Bioanalyzer\2012-02-21\2012-02-21\_003.xad

Created: 2/21/2012 12:17:51 PM  
Modified: 2/21/2012 1:35:25 PM

**Electropherogram Summary Continued ...**



**Overall Results for sample 12 : H3R3**

RNA Area:	109.3	RNA Integrity Number (RIN):	8.9 (B.02.08)
RNA Concentration:	163 ng/μl	Result Flagging Color:	<span style="background-color: #ccccff; border: 1px solid black; display: inline-block; width: 20px; height: 10px;"></span>
rRNA Ratio [28s / 18s]:	2.0	Result Flagging Label:	RIN: 8.90

**Fragment table for sample 12 : H3R3**

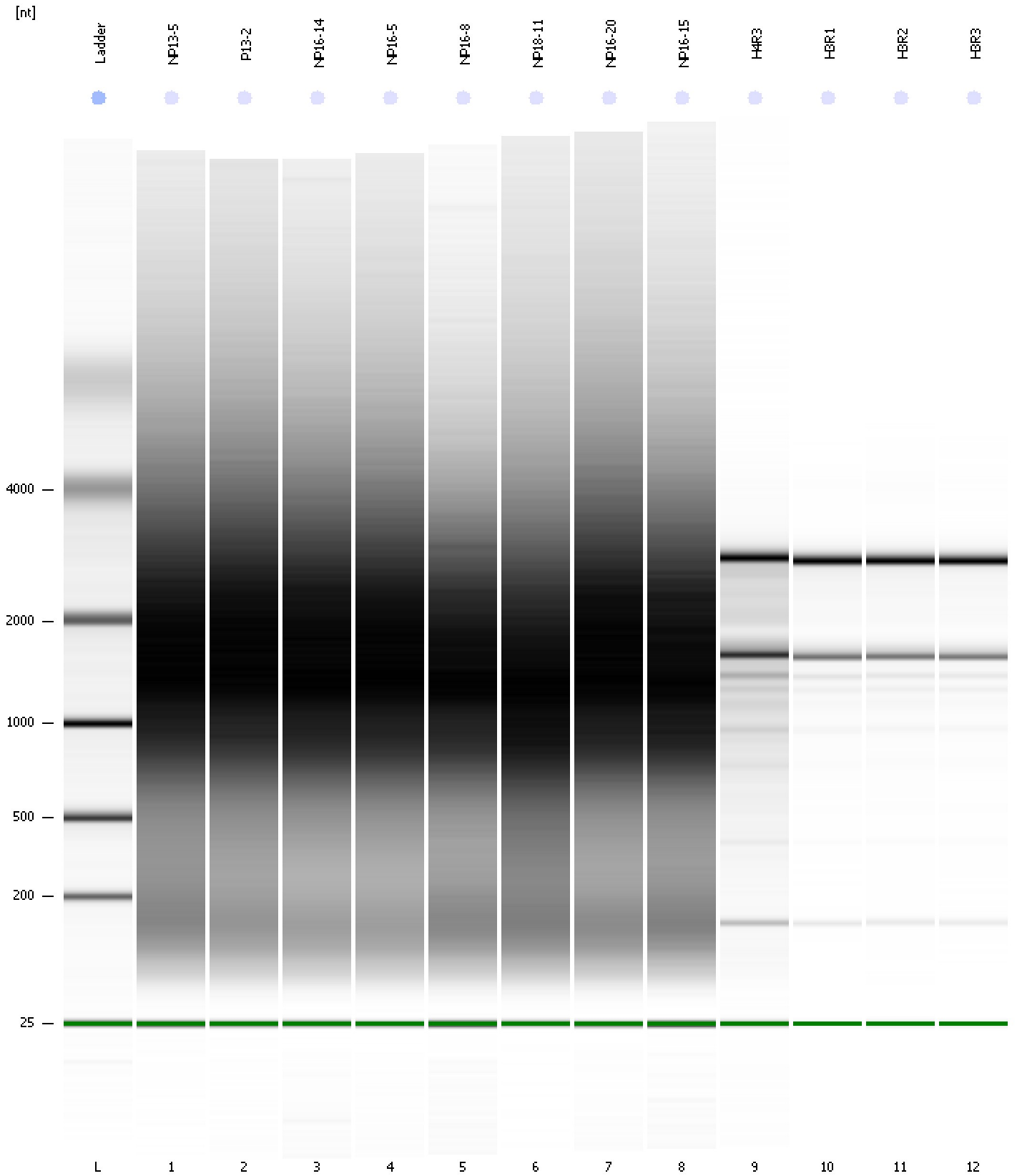
Name	Start Size [nt]	End Size [nt]	Area	% of total Area
18S	1,576	1,911	23.1	21.1
28S	2,579	3,430	45.8	41.9



Assay Class: Eukaryote Total RNA Nano  
Data Path: C:\...ents and Settings\Bioanalyzer\2012-02-21\2012-02-21\_003.xad

Created: 2/21/2012 12:17:51 PM  
Modified: 2/21/2012 1:35:25 PM

**Gel Image**



Assay Class: Eukaryote Total RNA Nano  
 Data Path: C:\...ents and Settings\Bioanalyzer\2012-02-21\2012-02-21\_003.xad

Created: 2/21/2012 12:17:51 PM  
 Modified: 2/21/2012 1:35:25 PM

**Run Logbook**

Description	Number	Source	Category	Sub Category	Time	Time Zone	User	Host
Run ended on port 1 (Number of wells acquired: 13)		Instrument	Run		2/21/2012 12:41:40 PM	(GMT --08:00) Pacific Standard Time	UC Davis	D8XSMGH1
Run started on port 1 (File: C:\Documents and Settings\Bioanalyzer\2012-02-21\2012-02-21_003.xad)		Instrument	Run		2/21/2012 12:17:54 PM	(GMT --08:00) Pacific Standard Time	UC Davis	D8XSMGH1
Product Number : G2938B		Instrument	Run		2/21/2012 12:17:54 PM	(GMT --08:00) Pacific Standard Time	UC Davis	D8XSMGH1
Name :		Instrument	Run		2/21/2012 12:17:54 PM	(GMT --08:00) Pacific Standard Time	UC Davis	D8XSMGH1
Vendor : Agilent Technologies		Instrument	Run		2/21/2012 12:17:54 PM	(GMT --08:00) Pacific Standard Time	UC Davis	D8XSMGH1
Serial# : DE13701086		Instrument	Run		2/21/2012 12:17:54 PM	(GMT --08:00) Pacific Standard Time	UC Davis	D8XSMGH1
Firmware : C.01.069		Instrument	Run		2/21/2012 12:17:54 PM	(GMT --08:00) Pacific Standard Time	UC Davis	D8XSMGH1
Cartridge : Electrode		Instrument	Run		2/21/2012 12:17:54 PM	(GMT --08:00) Pacific Standard Time	UC Davis	D8XSMGH1