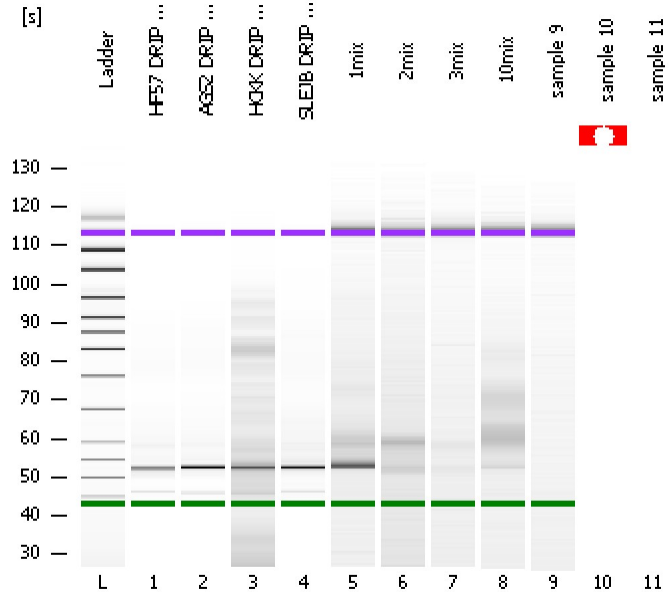


Assay Class: High Sensitivity DNA Assay
Data Path: C:\...ents and Settings\Bioanalyzer\2012-02-21\2012-02-21_007.xad

Created: 2/21/2012 4:28:12 PM
Modified: 2/21/2012 5:07:14 PM

Electrophoresis File Run Summary



Instrument Information:

Instrument Name: DE13701086 Firmware: C.01.069
Serial#: DE13701086 Type: G2938B

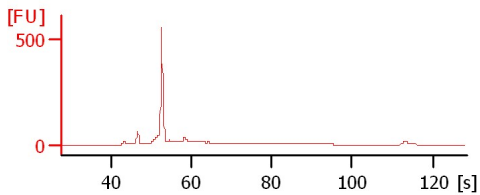
Assay Information:

Assay Origin Path: C:\Program Files\Agilent\2100 bioanalyzer\2100 expert\assays\dsDNA\High Sensitivity DNA.xsy
Assay Class: High Sensitivity DNA Assay
Version: 1.03
Assay Comments: Copyright © 2003-2010 Agilent Technologies

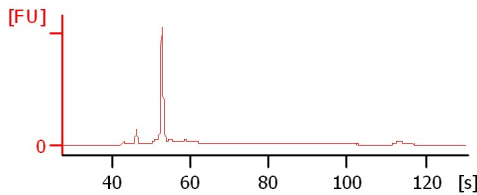
Chip Information:

Chip Lot #:
Reagent Kit Lot #:
Chip Comments:

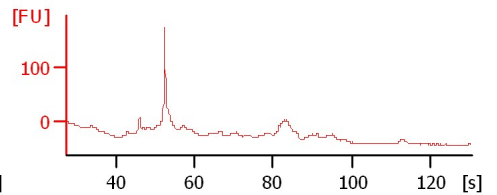
HF57 DRIP 12 lib



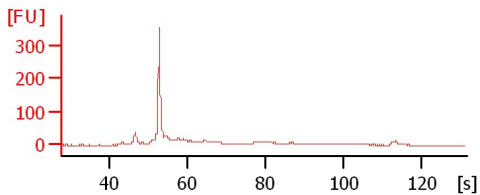
AGS2 DRIP 11 lib



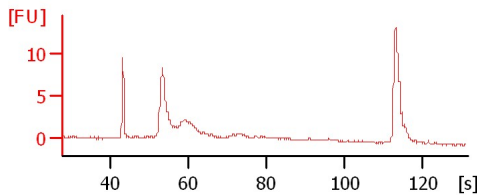
HCKK DRIP 15 lib



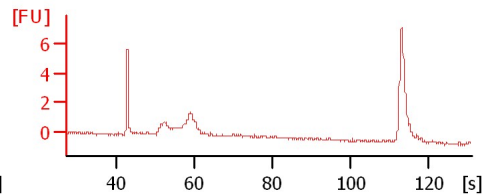
SLEJB DRIP 15 lib



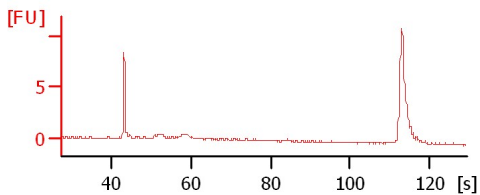
1mix



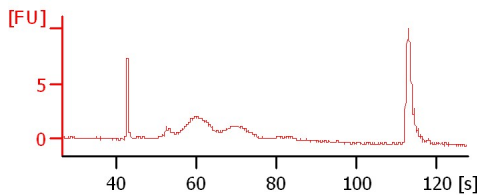
2mix



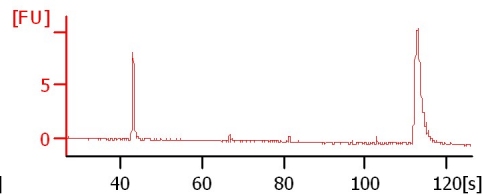
3mix



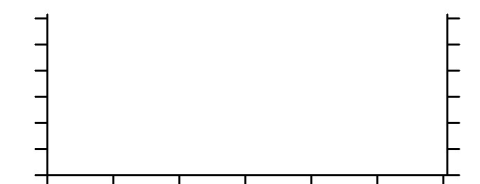
10mix



sample 9



sample 10



Assay Class: High Sensitivity DNA Assay
 Data Path: C:\...ents and Settings\Bioanalyzer\2012-02-21\2012-02-21_007.xad

Created: 2/21/2012 4:28:12 PM
 Modified: 2/21/2012 5:07:14 PM

Electrophoresis File Run Summary (Chip Summary)

Sample Name	Sample Comment	Rest. Digest	Status	Observation	Result Label	Result Color
HF57 DRIP 12 lib		<input type="checkbox"/>	✓			
AGS2 DRIP 11 lib		<input type="checkbox"/>	✓			
HCKK DRIP 15 lib		<input type="checkbox"/>	✓			
SLEJB DRIP 15 lib		<input type="checkbox"/>	✓			
1mix		<input type="checkbox"/>	✓			
2mix		<input type="checkbox"/>	✓			
3mix		<input type="checkbox"/>	✓			
10mix		<input type="checkbox"/>	✓			
sample 9		<input type="checkbox"/>	✓			
sample 10		<input type="checkbox"/>	✗			
sample 11		<input type="checkbox"/>	✗			
Ladder		<input type="checkbox"/>	✓			

Chip Lot #

Reagent Kit Lot #

Chip Comments :

Assay Class: High Sensitivity DNA Assay
Data Path: C:\...ents and Settings\Bioanalyzer\2012-02-21\2012-02-21_007.xad

Created: 2/21/2012 4:28:12 PM
Modified: 2/21/2012 5:07:14 PM

Electrophoresis Assay Details

General Analysis Settings

Number of Available Sample and Ladder Wells (Max.) : 12
Minimum Visible Range [s] : 32
Maximum Visible Range [s] : 138
Start Analysis Time Range [s] : 33
End Analysis Time Range [s] : 137.5
Ladder Concentration [pg/ μ l] : 1950
Uses Standard Area for Ladder Fragments
Lower Marker Concentration [pg/ μ l] : 125
Upper Marker Concentration [pg/ μ l] : 75
Used Upper Marker for Quantitation
Standard Curve Fit is Point to Point
Show Data Aligned to Lower and Upper Marker

Integrator Settings

Integration Start Time [s] : 33.05
Integration End Time [s] : 137
Slope Threshold : 0.8
Height Threshold [FU] : 5
Area Threshold : 0.1
Width Threshold [s] : 0.6
Baseline Plateau [s] : 0.5

Filter Settings

Filter Width [s] : 0.5
Polynomial Order : 4

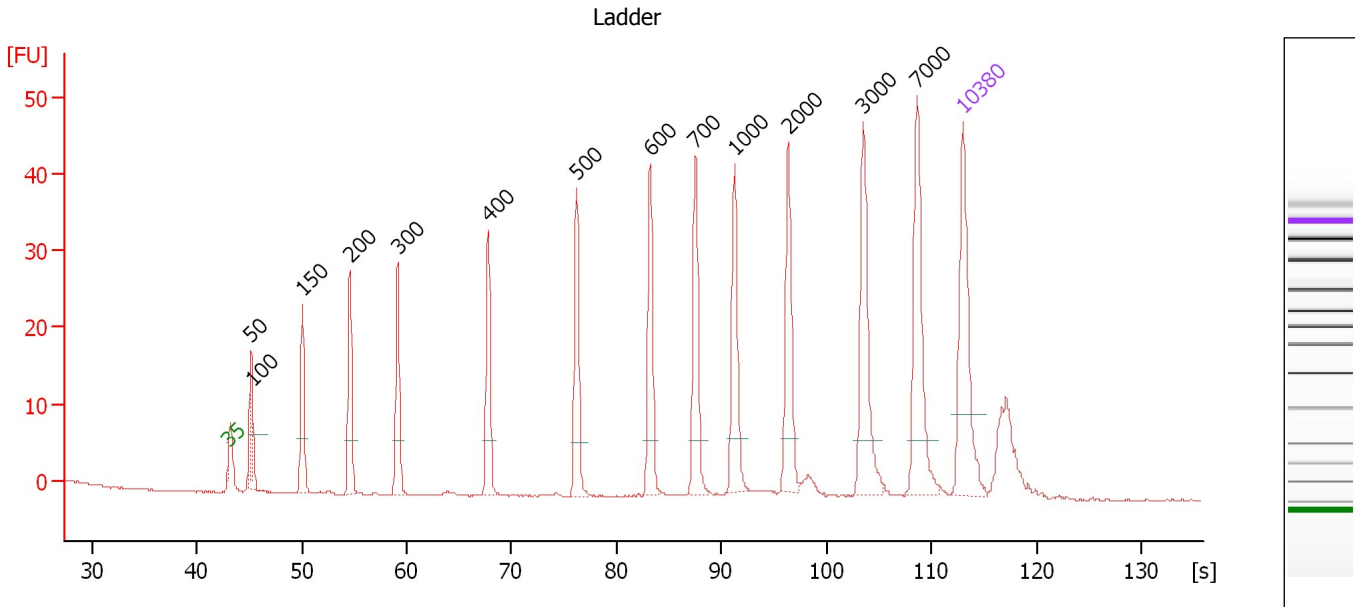
Ladder

Ladder Peak	Size	Area
1	35	160
2	50	210
3	100	208
4	150	221
5	200	242
6	300	270
7	400	305
8	500	306
9	600	336
10	700	321
11	1000	366
12	2000	413
13	3000	411
14	7000	400
15	10380	214

Assay Class: High Sensitivity DNA Assay
 Data Path: C:\...ents and Settings\Bioanalyzer\2012-02-21\2012-02-21_007.xad

Created: 2/21/2012 4:28:12 PM
 Modified: 2/21/2012 5:07:14 PM

Electropherogram Summary



Overall Results for Ladder

Noise: 0.1

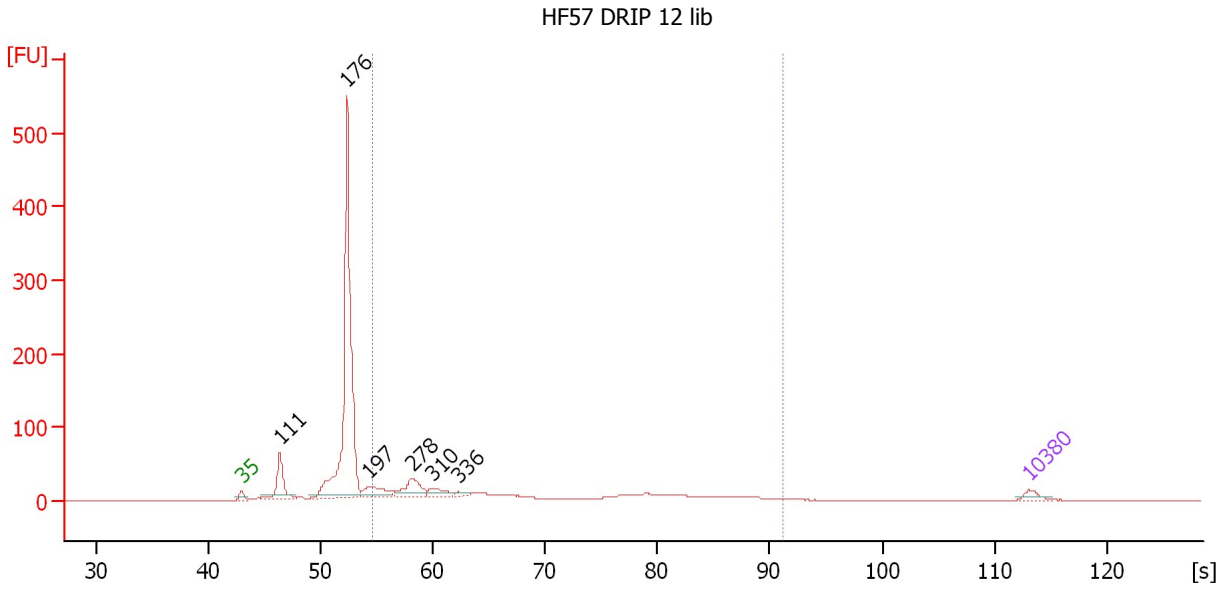
Peak table for Ladder

Peak	Size [bp]	Conc. [pg/μl]	Molarity [pmol/l]	Observations
1	0	0.00	0.0	
2	35	125.00	5,411.3	Lower Marker
3	50	150.00	4,545.5	Ladder Peak
4	100	150.00	2,272.7	Ladder Peak
5	150	150.00	1,515.2	Ladder Peak
6	200	150.00	1,136.4	Ladder Peak
7	300	150.00	757.6	Ladder Peak
8	400	150.00	568.2	Ladder Peak
9	500	150.00	454.5	Ladder Peak
10	600	150.00	378.8	Ladder Peak
11	700	150.00	324.7	Ladder Peak
12	1,000	150.00	227.3	Ladder Peak
13	2,000	150.00	113.6	Ladder Peak
14	3,000	150.00	75.8	Ladder Peak
15	7,000	150.00	32.5	Ladder Peak
16	10,380	75.00	10.9	Upper Marker

Assay Class: High Sensitivity DNA Assay
 Data Path: C:\...ents and Settings\Bioanalyzer\2012-02-21\2012-02-21_007.xad

Created: 2/21/2012 4:28:12 PM
 Modified: 2/21/2012 5:07:14 PM

Electropherogram Summary Continued ...



Overall Results for sample 1 : HF57 DRIP 12 lib

Number of peaks found: 6 Corr. Area 1: 432.3
 Noise: 0.1

Peak table for sample 1 : HF57 DRIP 12 lib

Peak	Size [bp]	Conc. [pg/μl]	Molarity [pmol/l]	Observations
1	35	125.00	5,411.3	Lower Marker
2	111	703.49	9,599.9	
3	176	4,816.82	41,510.0	
4	197	383.71	2,946.3	
5	278	427.77	2,335.3	
6	310	169.43	828.7	
7	336	59.34	267.2	
8	10,380	75.00	10.9	Upper Marker

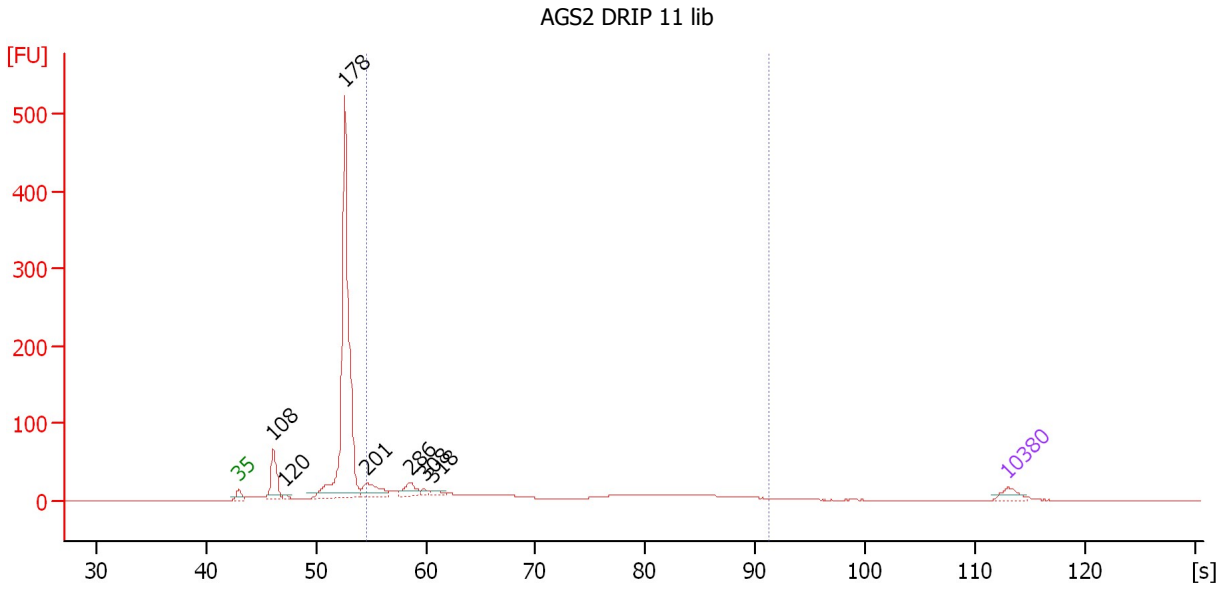
Region table for sample 1 : HF57 DRIP 12 lib

From [bp]	Molarity [pmol/l]	Average Size [bp]	Conc. [pg/μl]	To [bp]	Corr. Area	% of Total	Size distribution in CV [%]	Color
200	10,893.6	414	2,439.91	1,000	432.3	33	39.2	Blue

Assay Class: High Sensitivity DNA Assay
 Data Path: C:\...ents and Settings\Bioanalyzer\2012-02-21\2012-02-21_007.xad

Created: 2/21/2012 4:28:12 PM
 Modified: 2/21/2012 5:07:14 PM

Electropherogram Summary Continued ...



Overall Results for sample 2 : AGS2 DRIP 11 lib

Number of peaks found: 7 Corr. Area 1: 413.0
 Noise: 0.1

Peak table for sample 2 : AGS2 DRIP 11 lib

Peak	Size [bp]	Conc. [pg/μl]	Molarity [pmol/l]	Observations
1	35	125.00	5,411.3	Lower Marker
2	108	493.79	6,912.9	
3	120	38.59	488.7	
4	178	3,598.86	30,599.5	
5	201	282.96	2,127.9	
6	286	164.96	873.1	
7	308	41.11	202.5	
8	318	45.61	217.5	
9	10,380	75.00	10.9	Upper Marker

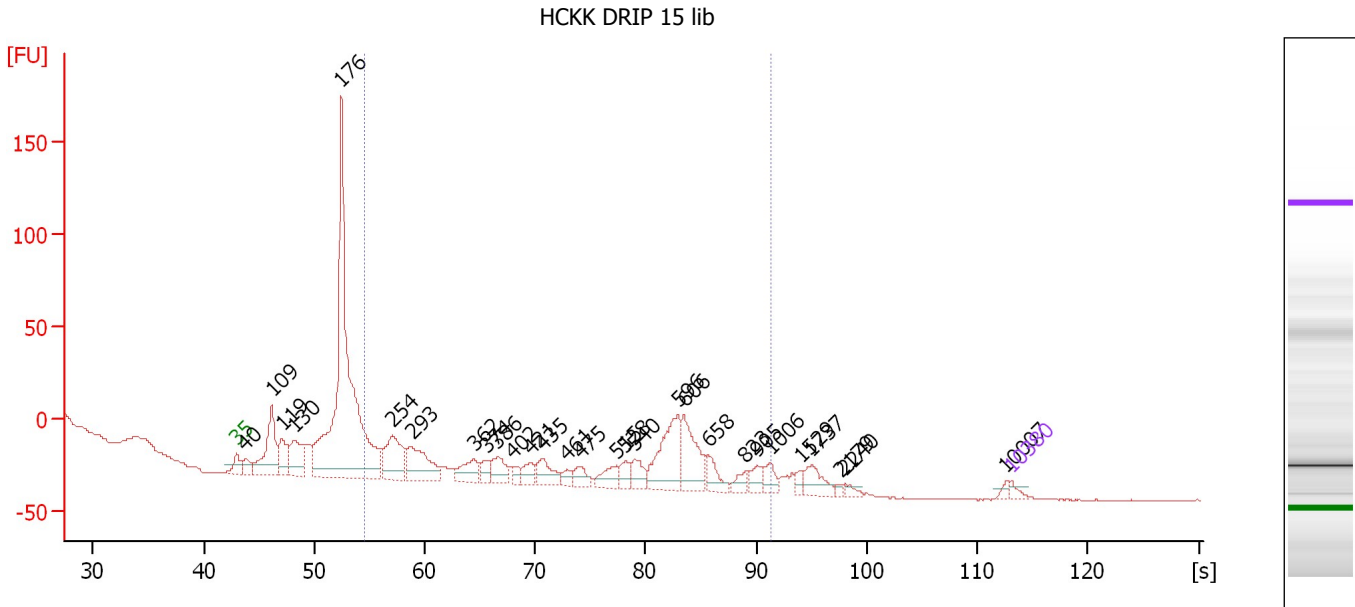
Region table for sample 2 : AGS2 DRIP 11 lib

From [bp]	Molarity [pmol/l]	Average Size [bp]	Conc. [pg/μl]	To [bp]	Corr. Area	% of Total	Size distribution in CV [%]	Color
200	8,015.6	430	1,824.77	1,000	413.0	32	39.9	Blue

Assay Class: High Sensitivity DNA Assay
 Data Path: C:\...ents and Settings\Bioanalyzer\2012-02-21\2012-02-21_007.xad

Created: 2/21/2012 4:28:12 PM
 Modified: 2/21/2012 5:07:14 PM

Electropherogram Summary Continued ...



Overall Results for sample 3 : HCKK DRIP 15 lib

Number of peaks found: 29 Corr. Area 1: 111.2
 Noise: 0.3

Peak table for sample 3 : HCKK DRIP 15 lib

Peak	Size [bp]	Conc. [pg/μl]	Molarity [pmol/l]	Observations
1	35	125.00	5,411.3	Lower Marker
2	40	296.37	11,143.0	
3	109	1,522.96	21,260.3	
4	119	637.70	8,129.3	
5	130	945.82	11,006.1	
6	176	8,435.36	72,423.9	
7	254	1,095.80	6,529.4	
8	293	1,000.96	5,181.8	
9	362	489.15	2,049.2	
10	374	213.09	863.0	
11	386	414.09	1,625.5	
12	402	147.42	555.1	
13	421	254.52	916.4	
14	435	422.19	1,471.8	
15	461	148.70	488.6	
16	475	250.54	799.3	
17	515	329.67	969.0	
18	528	216.97	622.6	
19	540	317.76	890.8	
20	596	1,223.17	3,110.2	
21	606	869.29	2,174.5	
22	658	322.62	743.2	
23	823	176.87	325.6	
24	905	201.92	338.0	
25	1,006	225.48	339.5	
26	1,529	106.43	105.5	

Assay Class: High Sensitivity DNA Assay
 Data Path: C:\...ents and Settings\Bioanalyzer\2012-02-21\2012-02-21_007.xad


Created: 2/21/2012 4:28:12 PM
 Modified: 2/21/2012 5:07:14 PM

Electropherogram Summary Continued ...

... Peak table for sample 3 : HCKK DRIP 15 lib

Peak	Size [bp]	Conc. [pg/μl]	Molarity [pmol/l]	Observations
27	1,737	326.48	284.7	
28	2,179	41.95	29.2	
29	2,240	79.99	54.1	
30	10,007	59.86	9.1	
31	10,380	75.00	10.9	Upper Marker

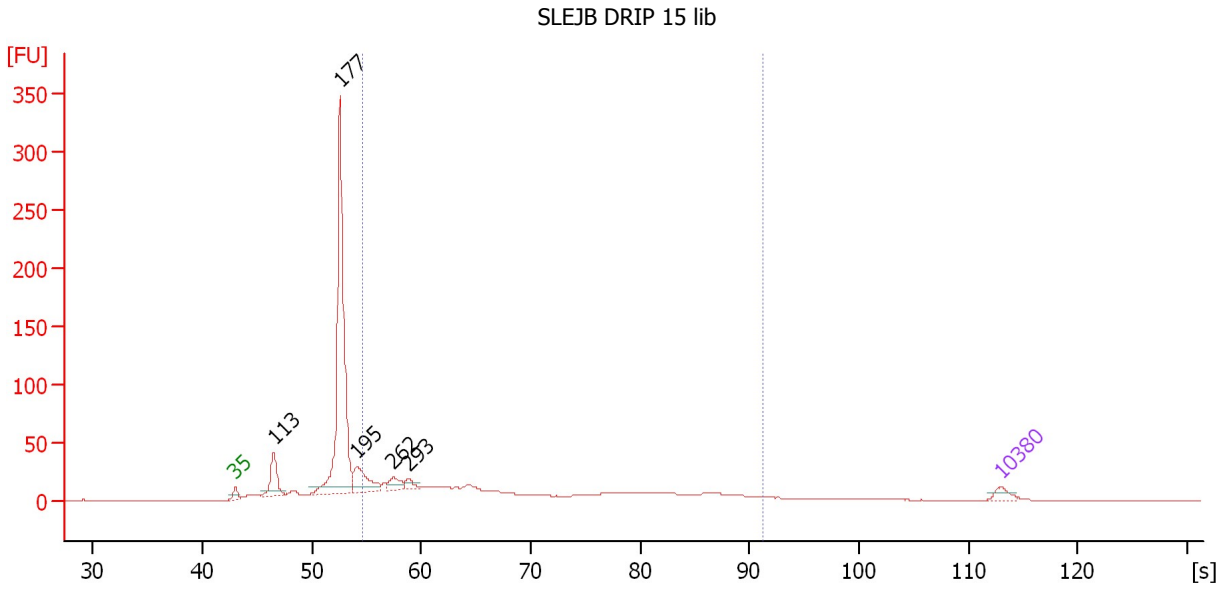
Region table for sample 3 : HCKK DRIP 15 lib

From [bp]	Molarity [pmol/l]	Average Size [bp]	Conc. [pg/μl]	To [bp]	Corr. Area	% of Total	Size distribution in CV [%]	Color
200	4,280.2	594	1,456.80	1,000	111.2	29	20.5	

Assay Class: High Sensitivity DNA Assay
 Data Path: C:\...ents and Settings\Bioanalyzer\2012-02-21\2012-02-21_007.xad

Created: 2/21/2012 4:28:12 PM
 Modified: 2/21/2012 5:07:14 PM

Electropherogram Summary Continued ...



Overall Results for sample 4 : SLEJB DRIP 15 lib

Number of peaks found: 5 Corr. Area 1: 428.7
 Noise: 0.2

Peak table for sample 4 : SLEJB DRIP 15 lib

Peak	Size [bp]	Conc. [pg/μl]	Molarity [pmol/l]	Observations
1	35	125.00	5,411.3	Lower Marker
2	113	578.06	7,784.4	
3	177	3,882.85	33,145.5	
4	195	502.04	3,906.3	
5	262	178.55	1,034.0	
6	293	95.90	496.1	
7	10,380	75.00	10.9	Upper Marker

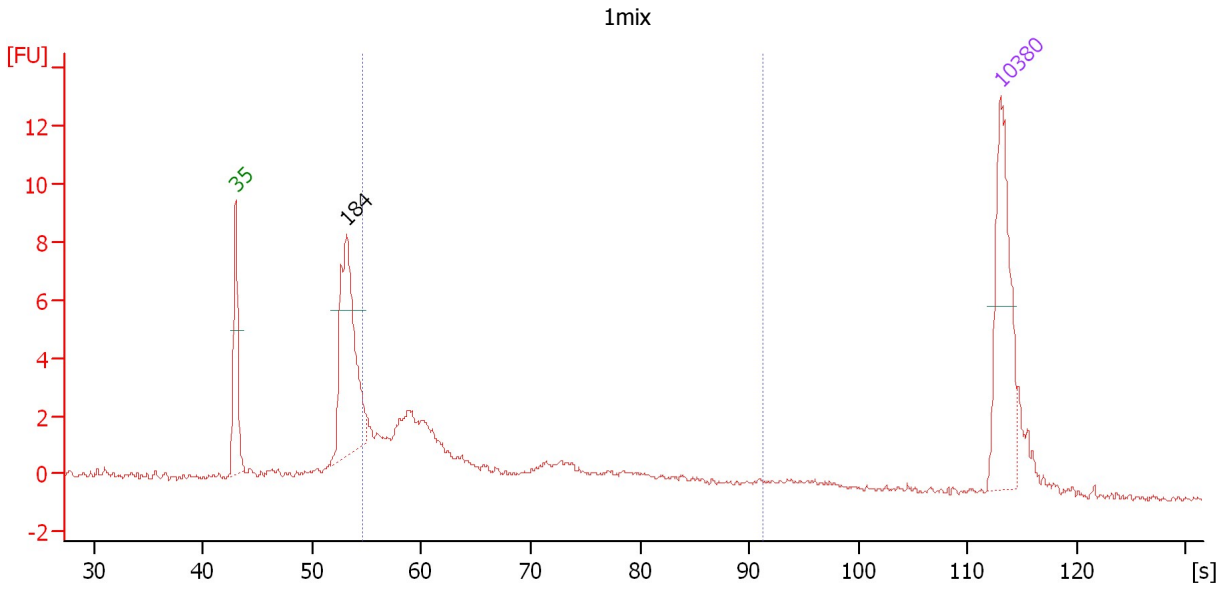
Region table for sample 4 : SLEJB DRIP 15 lib

From [bp]	Molarity [pmol/l]	Average Size [bp]	Conc. [pg/μl]	To [bp]	Corr. Area	% of Total	Size distribution in CV [%]	Color
200	14,145.9	419	3,183.94	1,000	428.7	39	39.5	Blue

Assay Class: High Sensitivity DNA Assay
 Data Path: C:\...ents and Settings\Bioanalyzer\2012-02-21\2012-02-21_007.xad

Created: 2/21/2012 4:28:12 PM
 Modified: 2/21/2012 5:07:14 PM

Electropherogram Summary Continued ...



Overall Results for sample 5 : 1mix

Number of peaks found: 1 Corr. Area 1: 42.2
 Noise: 0.1

Peak table for sample 5 : 1mix

Peak	Size [bp]	Conc. [pg/μl]	Molarity [pmol/l]	Observations
1	35	125.00	5,411.3	Lower Marker
2	184	158.35	1,306.4	
3	10,380	75.00	10.9	Upper Marker

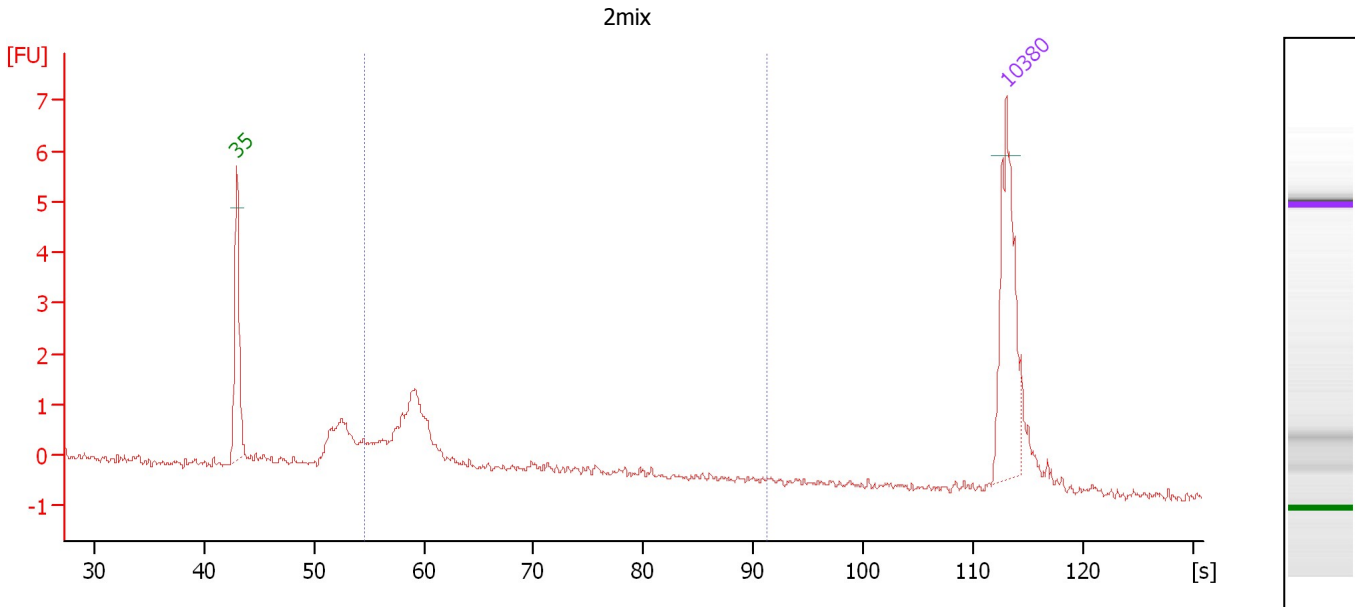
Region table for sample 5 : 1mix

From [bp]	Molarity [pmol/l]	Average Size [bp]	Conc. [pg/μl]	To [bp]	Corr. Area	% of Total	Size distribution in CV [%]	Color
200	1,251.4	384	267.10	1,000	42.2	51	38.5	Blue

Assay Class: High Sensitivity DNA Assay
 Data Path: C:\...ents and Settings\Bioanalyzer\2012-02-21\2012-02-21_007.xad

Created: 2/21/2012 4:28:12 PM
 Modified: 2/21/2012 5:07:14 PM

Electropherogram Summary Continued ...



Overall Results for sample 6 : 2mix

Number of peaks found: 0 Corr. Area 1: 12.0
 Noise: 0.1

Peak table for sample 6 : 2mix

Peak	Size [bp]	Conc. [pg/μl]	Molarity [pmol/l]	Observations
1	35	125.00	5,411.3	Lower Marker
2	10,380	75.00	10.9	Upper Marker

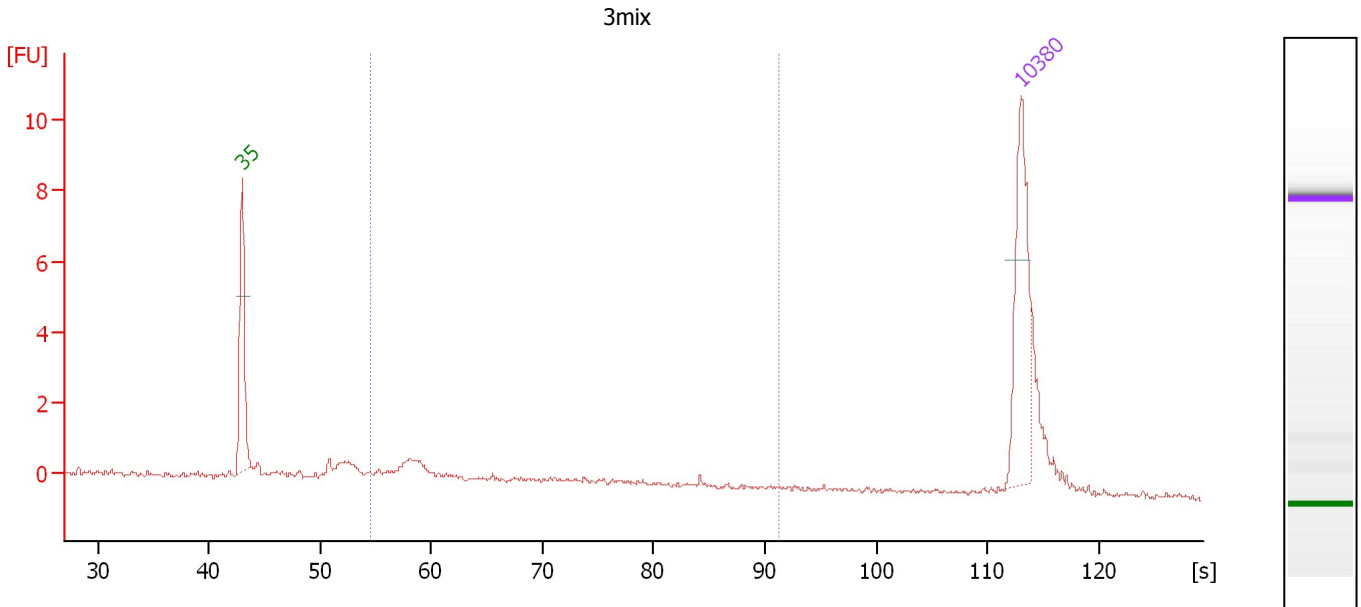
Region table for sample 6 : 2mix

From [bp]	Molarity [pmol/l]	Average Size [bp]	Conc. [pg/μl]	To [bp]	Corr. Area	% of Total	Size distribution in CV [%]	Color
200	789.1	336	157.71	1,000	12.0	59	34.0	Blue

Assay Class: High Sensitivity DNA Assay
 Data Path: C:\...ents and Settings\Bioanalyzer\2012-02-21\2012-02-21_007.xad

Created: 2/21/2012 4:28:12 PM
 Modified: 2/21/2012 5:07:14 PM

Electropherogram Summary Continued ...



Overall Results for sample 7 : 3mix

Number of peaks found: 0 Corr. Area 1: 8.3
 Noise: 0.1

Peak table for sample 7 : 3mix

Peak	Size [bp]	Conc. [pg/μl]	Molarity [pmol/l]	Observations
1	35	125.00	5,411.3	Lower Marker
2	10,380	75.00	10.9	Upper Marker

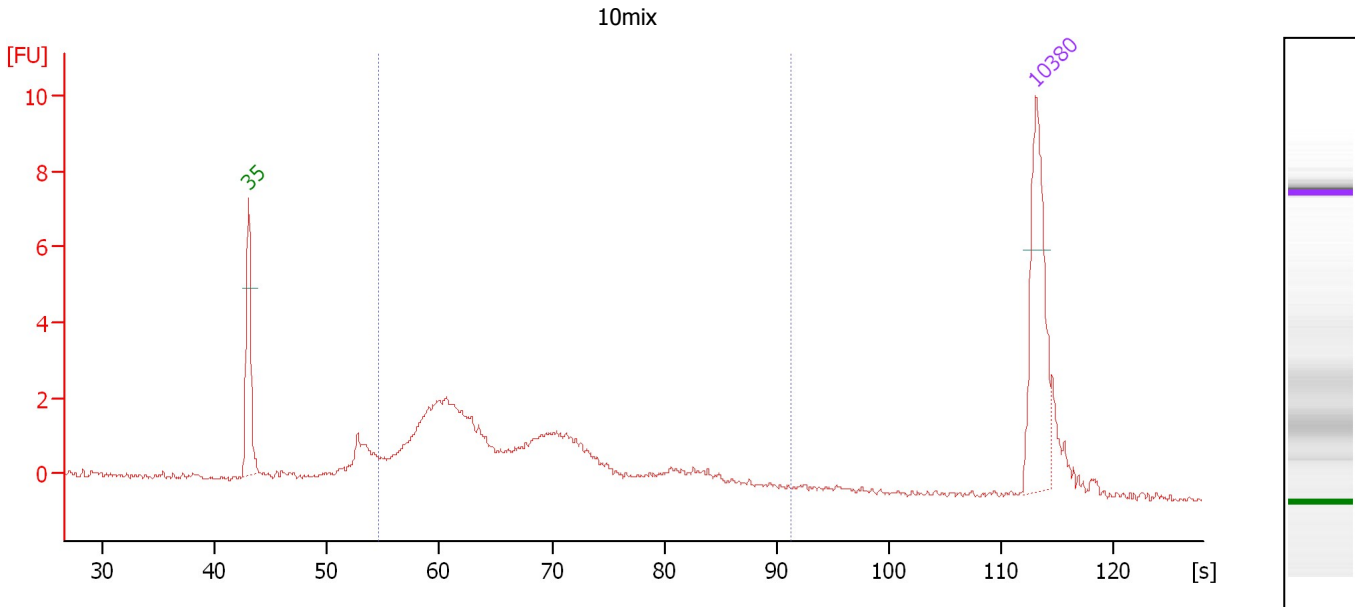
Region table for sample 7 : 3mix

From [bp]	Molarity [pmol/l]	Average Size [bp]	Conc. [pg/μl]	To [bp]	Corr. Area	% of Total	Size distribution in CV [%]	Color
200	351.1	410	79.03	1,000	8.3	37	38.7	Blue

Assay Class: High Sensitivity DNA Assay
 Data Path: C:\...ents and Settings\Bioanalyzer\2012-02-21\2012-02-21_007.xad

Created: 2/21/2012 4:28:12 PM
 Modified: 2/21/2012 5:07:14 PM

Electropherogram Summary Continued ...



Overall Results for sample 8 : 10mix

Number of peaks found: 0 Corr. Area 1: 43.9
 Noise: 0.1

Peak table for sample 8 : 10mix

Peak	Size [bp]	Conc. [pg/μl]	Molarity [pmol/l]	Observations
1	35	125.00	5,411.3	Lower Marker
2	10,380	75.00	10.9	Upper Marker

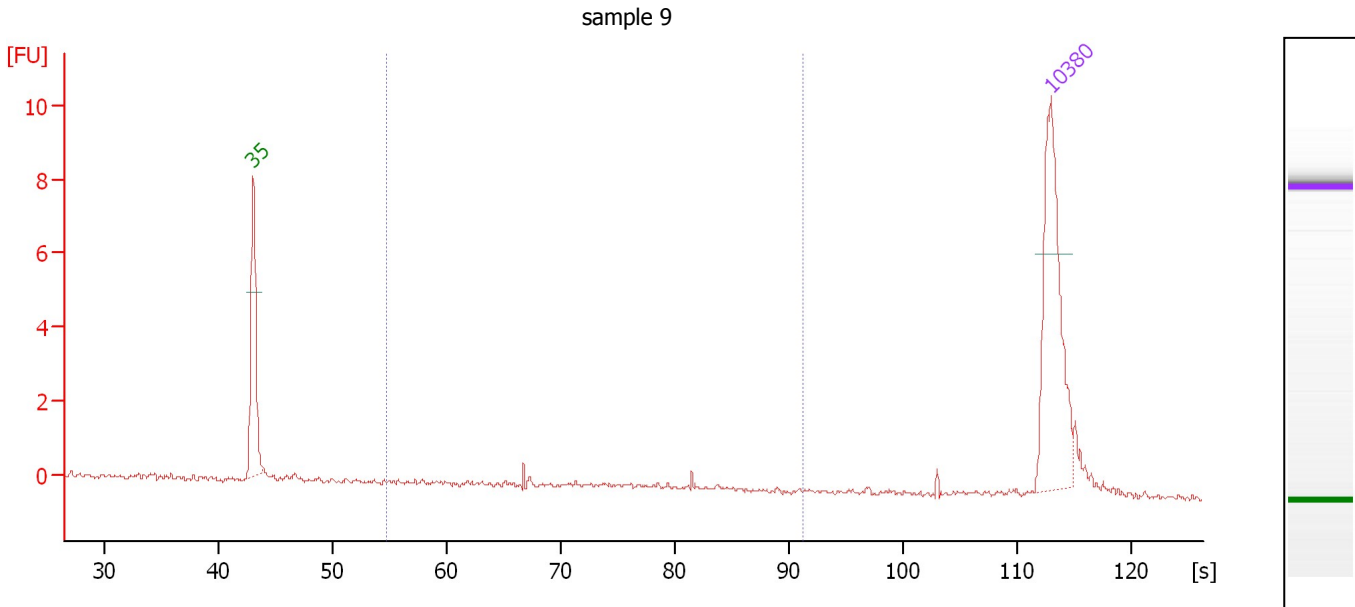
Region table for sample 8 : 10mix

From [bp]	Molarity [pmol/l]	Average Size [bp]	Conc. [pg/μl]	To [bp]	Corr. Area	% of Total	Size distribution in CV [%]	Color
200	1,621.2	395	378.54	1,000	43.9	78	29.6	Blue

Assay Class: High Sensitivity DNA Assay
 Data Path: C:\...ents and Settings\Bioanalyzer\2012-02-21\2012-02-21_007.xad

Created: 2/21/2012 4:28:12 PM
 Modified: 2/21/2012 5:07:14 PM

Electropherogram Summary Continued ...



Overall Results for sample 9 : sample 9

Number of peaks found: 0 Corr. Area 1: 2.2
 Noise: 0.1

Peak table for sample 9 : sample 9

Peak	Size [bp]	Conc. [pg/μl]	Molarity [pmol/l]	Observations
1	35	125.00	5,411.3	Lower Marker
2	10,380	75.00	10.9	Upper Marker

Region table for sample 9 : sample 9

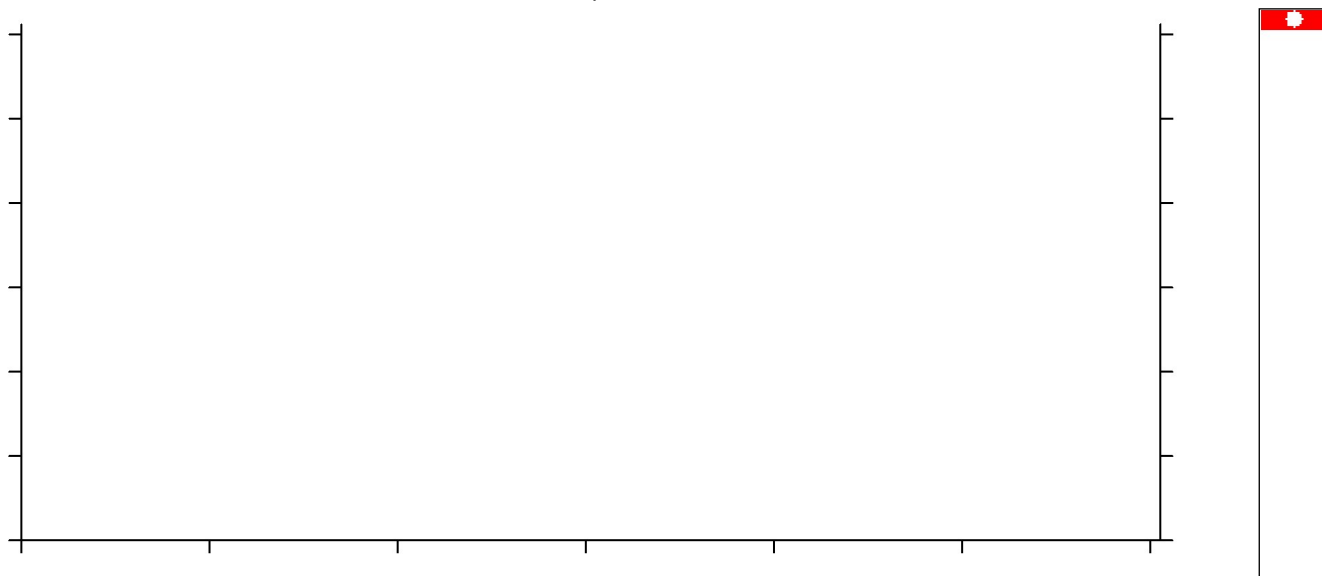
From [bp]	Molarity [pmol/l]	Average Size [bp]	Conc. [pg/μl]	To [bp]	Corr. Area	% of Total	Size distribution in CV [%]	Color
200	59.8	457	15.83	1,000	2.2	27	28.0	Blue

Assay Class: High Sensitivity DNA Assay
Data Path: C:\...ents and Settings\Bioanalyzer\2012-02-21\2012-02-21_007.xad

Created: 2/21/2012 4:28:12 PM
Modified: 2/21/2012 5:07:14 PM

Electropherogram Summary Continued ...

sample 10



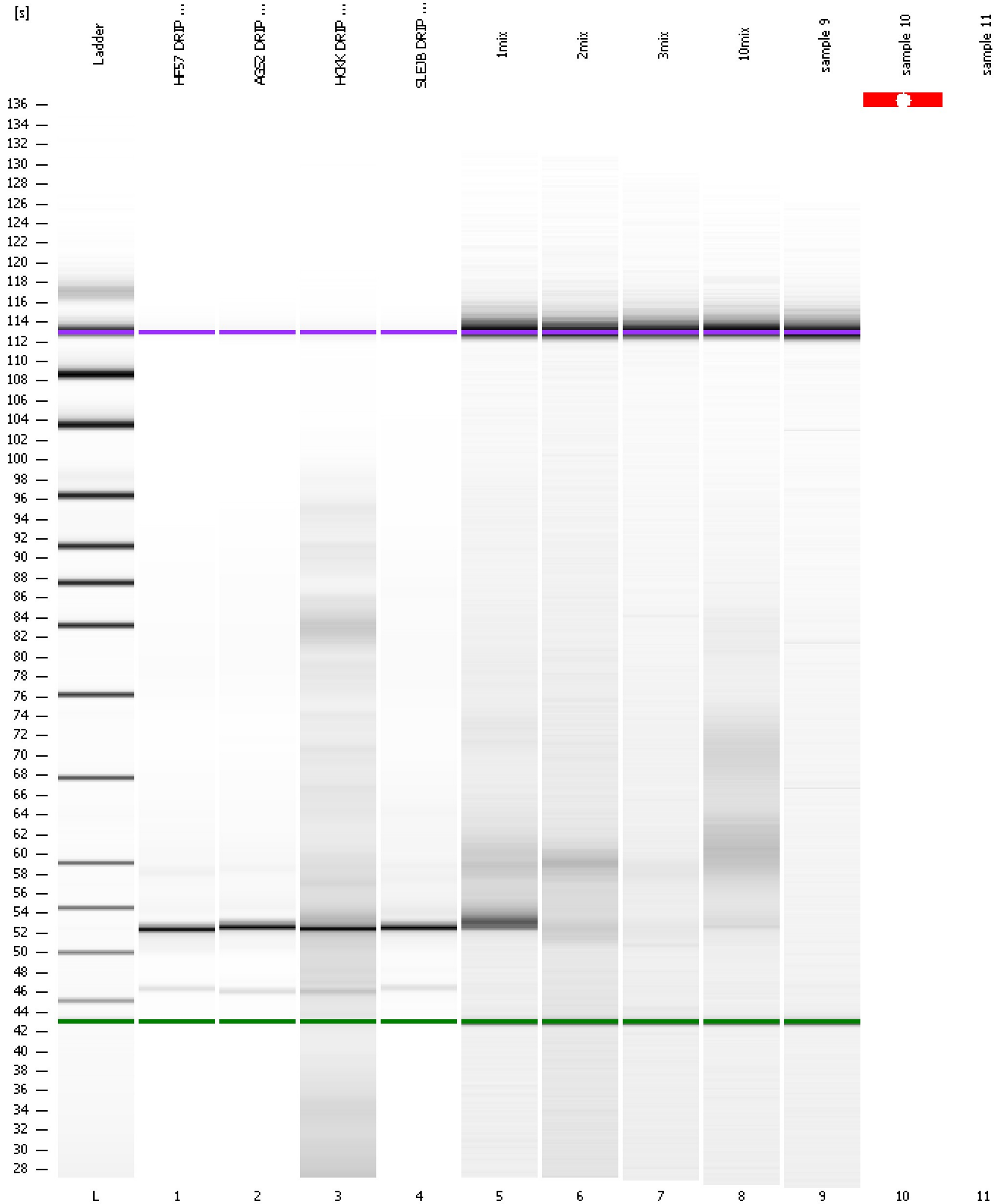
Setpoint Deviations for sample 10 : sample 10

End Analysis Time Range [s] : 0.7

Assay Class: High Sensitivity DNA Assay
Data Path: C:\...ents and Settings\Bioanalyzer\2012-02-21\2012-02-21_007.xad

Created: 2/21/2012 4:28:12 PM
Modified: 2/21/2012 5:07:14 PM

Gel Image



Assay Class: High Sensitivity DNA Assay
Data Path: C:\...ents and Settings\Bioanalyzer\2012-02-21\2012-02-21_007.xad

Created: 2/21/2012 4:28:12 PM
Modified: 2/21/2012 5:07:14 PM

Invalid Samples

Sample 11 has not been run, no results available.

Assay Class: High Sensitivity DNA Assay
 Data Path: C:\...ents and Settings\Bioanalyzer\2012-02-21\2012-02-21_007.xad

Created: 2/21/2012 4:28:12 PM
 Modified: 2/21/2012 5:07:14 PM

Run Logbook

Description	Number	Source	Category	Sub Category	Time	Time Zone	User	Host
Run aborted on port 1		Instrument	Run		2/21/2012 5:04:13 PM	(GMT --08:00) Pacific Standard Time	UC Davis	D8XSMGH1
Run started on port 1 (File: C:\Documents and Settings\Bioanalyzer\2012-02-21\2012-02-21_007.xad)		Instrument	Run		2/21/2012 4:28:19 PM	(GMT --08:00) Pacific Standard Time	UC Davis	D8XSMGH1
Product Number : G2938B		Instrument	Run		2/21/2012 4:28:19 PM	(GMT --08:00) Pacific Standard Time	UC Davis	D8XSMGH1
Name :		Instrument	Run		2/21/2012 4:28:19 PM	(GMT --08:00) Pacific Standard Time	UC Davis	D8XSMGH1
Vendor : Agilent Technologies		Instrument	Run		2/21/2012 4:28:19 PM	(GMT --08:00) Pacific Standard Time	UC Davis	D8XSMGH1
Serial# : DE13701086		Instrument	Run		2/21/2012 4:28:19 PM	(GMT --08:00) Pacific Standard Time	UC Davis	D8XSMGH1
Firmware : C.01.069		Instrument	Run		2/21/2012 4:28:19 PM	(GMT --08:00) Pacific Standard Time	UC Davis	D8XSMGH1
Cartridge : Electrode		Instrument	Run		2/21/2012 4:28:19 PM	(GMT --08:00) Pacific Standard Time	UC Davis	D8XSMGH1