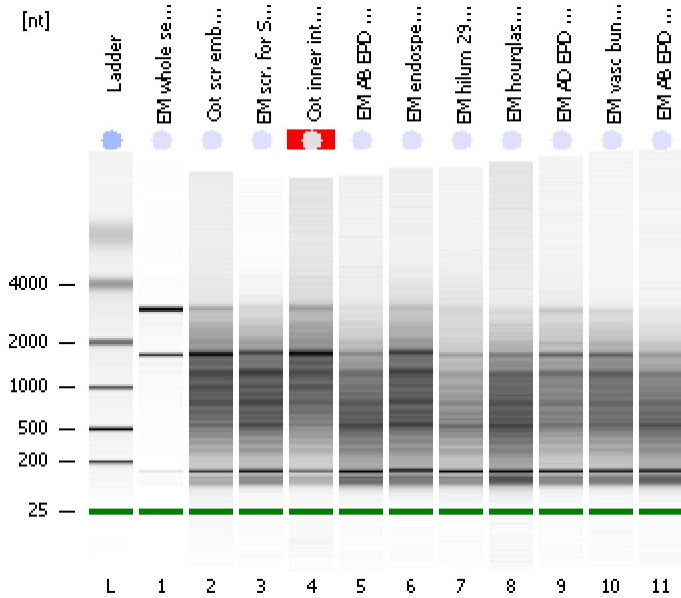


Assay Class: Eukaryote Total RNA Pico
Data Path: C:\...ents and Settings\Bioanalyzer\2012-02-21\2012-02-21_006.xad

Created: 2/21/2012 3:38:19 PM
Modified: 2/21/2012 4:01:20 PM

Electrophoresis File Run Summary



Instrument Information:

Instrument Name: DE13701086 Firmware: C.01.069
Serial#: DE13701086 Type: G2938B

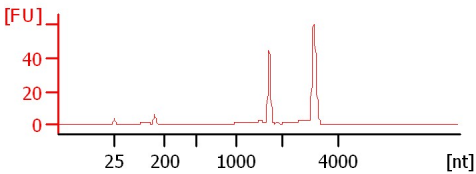
Assay Information:

Assay Origin Path: C:\Program Files\Agilent\2100 bioanalyzer\2100 expert\assays\RNA\Eukaryote Total RNA Pico Series II.xsy
Assay Class: Eukaryote Total RNA Pico
Version: 2.6
Assay Comments: Total RNA Analysis pg sensitivity (Eukaryote)
© Copyright 2003 - 2009 Agilent Technologies, Inc.

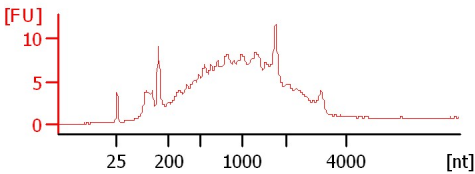
Chip Information:

Chip Lot #:
Reagent Kit Lot #:
Chip Comments:

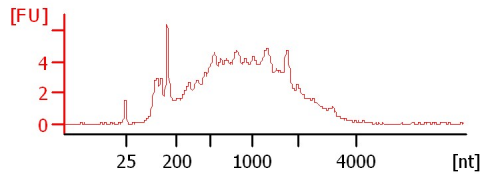
EM whole seed control
RIN: 9.40



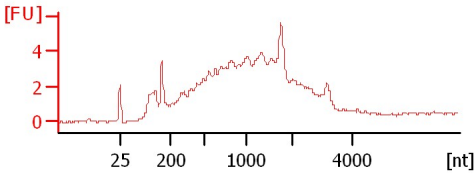
Cot scr embed 2/10
RIN:3



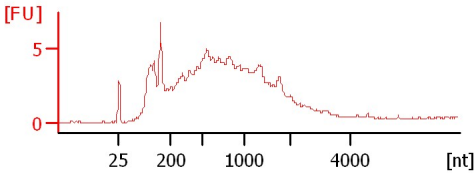
EM scr. for SAM embed 2/10
RIN: 2.50



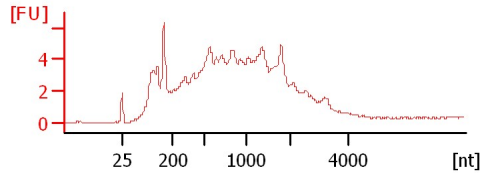
Cot inner integ 52-66
RIN N/A



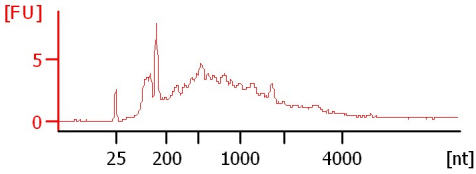
EM AB EPD 39-51
RIN: 2.20



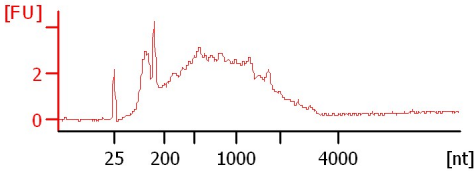
EM endosperm 32-41
RIN: 2.50



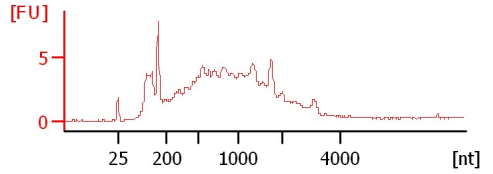
EM hilum 29-32
RIN: 2.30



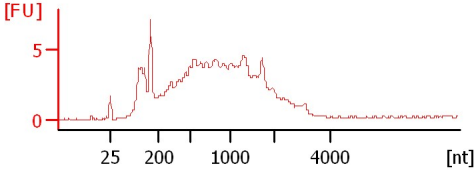
EM hourglass 67-93
RIN: 2.30



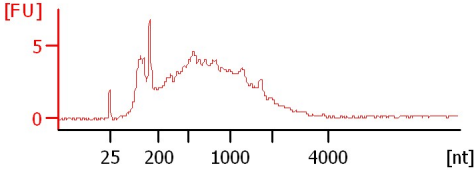
EM AD EPD 47-54
RIN: 2.80



EM vasc bundle 26-33
RIN: 2.40



EM AB EPD 52-67
RIN: 2.20



Assay Class: Eukaryote Total RNA Pico
Data Path: C:\...ents and Settings\Bioanalyzer\2012-02-21\2012-02-21_006.xad

Created: 2/21/2012 3:38:19 PM
Modified: 2/21/2012 4:01:20 PM

Electrophoresis File Run Summary (Chip Summary)

Sample Name	Sample Comment	Status	Result Label	Result Color
EM whole seed control		✓	RIN: 9.40	
Cot scr embed 2/10		✓	RIN:3	
EM scr. for SAM embed 2/10		✓	RIN: 2.50	
Cot inner integ 52-66		✓	RIN N/A	
EM AB EPD 39-51		✓	RIN: 2.20	
EM endosperm 32-41		✓	RIN: 2.50	
EM hilum 29-32		✓	RIN: 2.30	
EM hourglass 67-93		✓	RIN: 2.30	
EM AD EPD 47-54		✓	RIN: 2.80	
EM vasc bundle 26-33		✓	RIN: 2.40	
EM AB EPD 52-67		✓	RIN: 2.20	
Ladder		✓	All Other Samples	

Chip Lot #

Reagent Kit Lot #

Chip Comments :

Assay Class: Eukaryote Total RNA Pico
Data Path: C:\...ents and Settings\Bioanalyzer\2012-02-21\2012-02-21_006.xad

Created: 2/21/2012 3:38:19 PM
Modified: 2/21/2012 4:01:20 PM

Electrophoresis Assay Details

General Analysis Settings

Number of Available Sample and Ladder Wells (Max.) : 12

Minimum Visible Range [s] : 17

Maximum Visible Range [s] : 70

Start Analysis Time Range [s] : 18

End Analysis Time Range [s] : 69

Ladder Concentration [pg/ μ l] : 1000

Lower Marker Concentration [pg/ μ l] : 0

Upper Marker Concentration [pg/ μ l] : 0

Used Lower Marker for Quantitation

Standard Curve Fit is Logarithmic

Show Data Aligned to Lower Marker

Integrator Settings

Integration Start Time [s] : 18

Integration End Time [s] : 69

Slope Threshold : 0.6

Height Threshold [FU] : 0.5

Area Threshold : 0.2

Width Threshold [s] : 0.3

Baseline Plateau [s] : 6

Filter Settings

Filter Width [s] : 0.5

Polynomial Order : 4

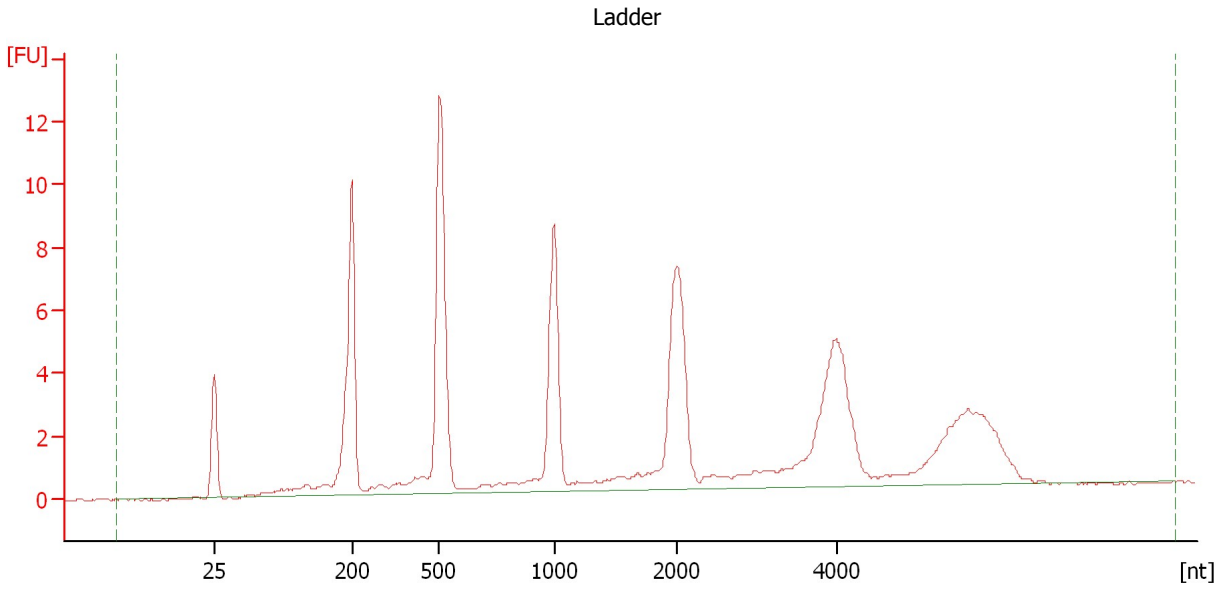
Ladder

Ladder Peak	Size
1	25
2	200
3	500
4	1000
5	2000
6	4000

Assay Class: Eukaryote Total RNA Pico
Data Path: C:\...ents and Settings\Bioanalyzer\2012-02-21\2012-02-21_006.xad

Created: 2/21/2012 3:38:19 PM
Modified: 2/21/2012 4:01:20 PM

Electropherogram Summary



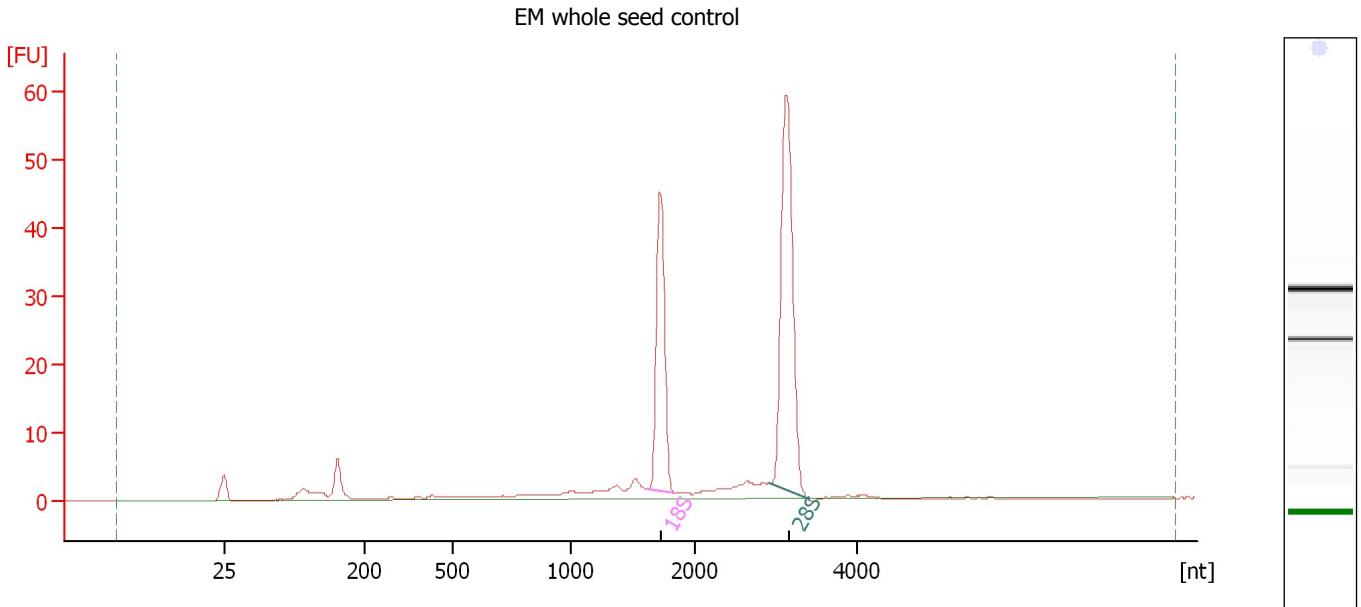
Overall Results for Ladder

RNA Area:	99.0	Result Flagging Color:	
RNA Concentration:	1,000 pg/μl	Result Flagging Label:	All Other Samples

Assay Class: Eukaryote Total RNA Pico
Data Path: C:\...ents and Settings\Bioanalyzer\2012-02-21\2012-02-21_006.xad

Created: 2/21/2012 3:38:19 PM
Modified: 2/21/2012 4:01:20 PM

Electropherogram Summary Continued ...



Overall Results for sample 1 : EM whole seed control

RNA Area: 180.1 RNA Integrity Number (RIN): 9.4 (B.02.08)
RNA Concentration: 1,820 pg/μl Result Flagging Color:
rRNA Ratio [28s / 18s]: 1.7 Result Flagging Label: RIN: 9.40

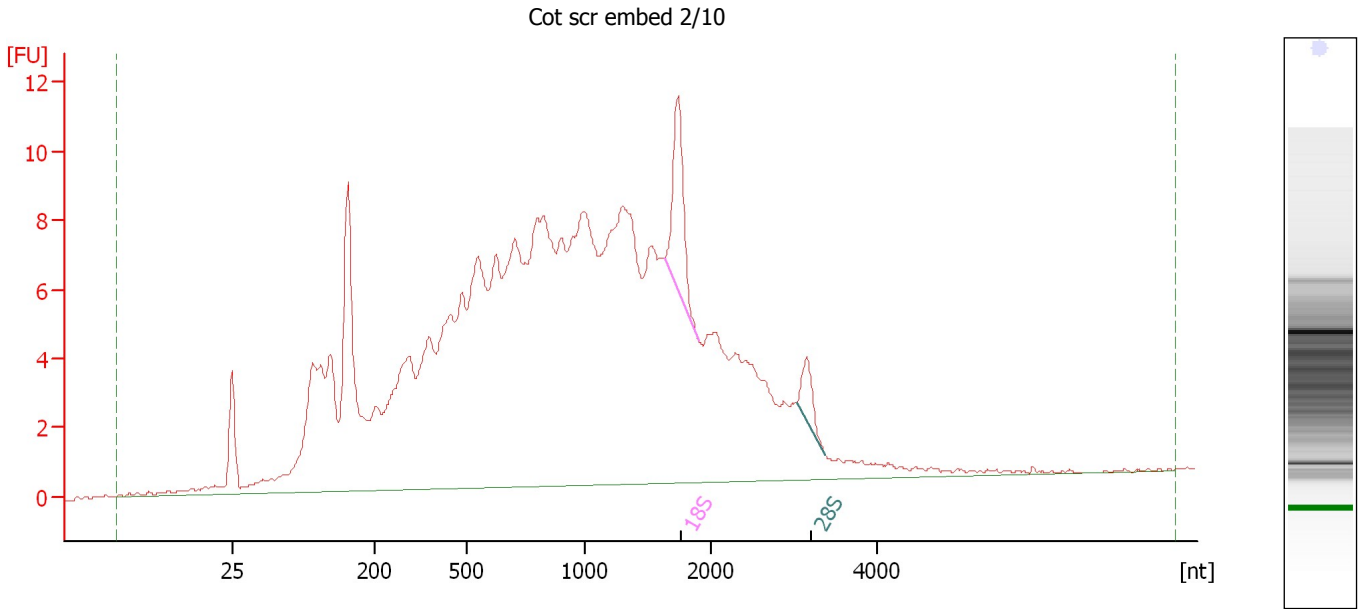
Fragment table for sample 1 : EM whole seed control

Name	Start Size [nt]	End Size [nt]	Area	% of total Area
18S	1,615	1,845	42.3	23.5
28S	2,920	3,395	71.7	39.8

Assay Class: Eukaryote Total RNA Pico
Data Path: C:\...ents and Settings\Bioanalyzer\2012-02-21\2012-02-21_006.xad

Created: 2/21/2012 3:38:19 PM
Modified: 2/21/2012 4:01:20 PM

Electropherogram Summary Continued ...



Overall Results for sample 2 : Cot scr embed 2/10

RNA Area: 317.7 RNA Integrity Number (RIN): 3 (B.02.08)
RNA Concentration: 3,210 pg/μl Result Flagging Color:
rRNA Ratio [28s / 18s]: 0.3 Result Flagging Label: RIN:3

Fragment table for sample 2 : Cot scr embed 2/10

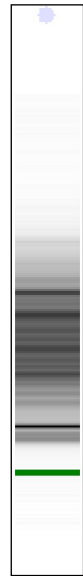
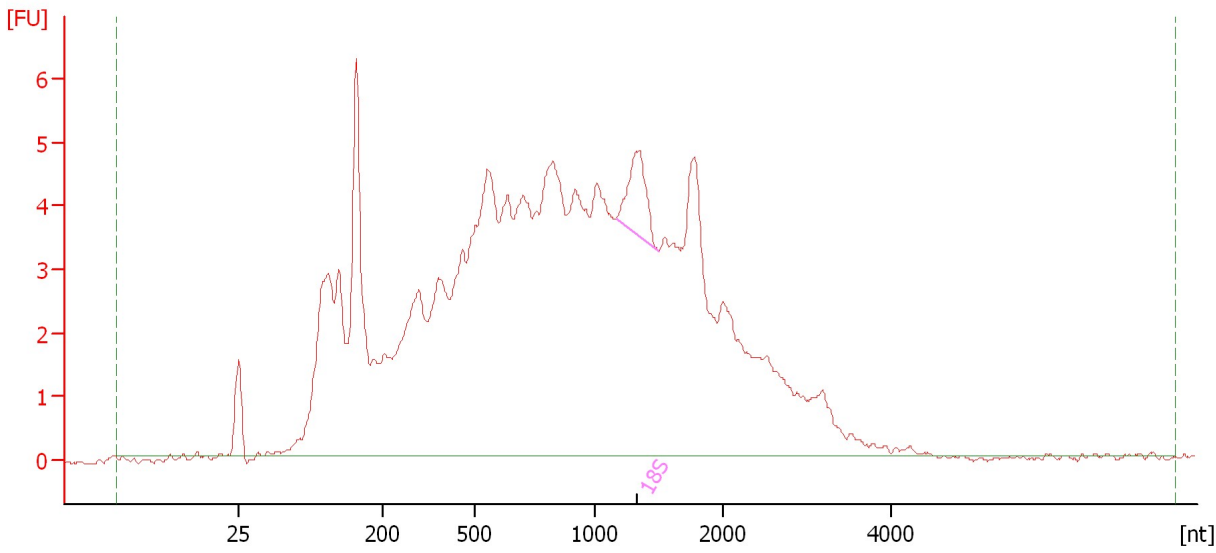
Name	Start Size [nt]	End Size [nt]	Area	% of total Area
18S	1,627	1,896	7.0	2.2
28S	3,033	3,383	2.0	0.6

Assay Class: Eukaryote Total RNA Pico
Data Path: C:\...ents and Settings\Bioanalyzer\2012-02-21\2012-02-21_006.xad

Created: 2/21/2012 3:38:19 PM
Modified: 2/21/2012 4:01:20 PM

Electropherogram Summary Continued ...

EM scr. for SAM embed 2/10



Overall Results for sample 3 : EM scr. for SAM embed 2/10

RNA Area:	182.8	RNA Integrity Number (RIN):	2.5 (B.02.08)
RNA Concentration:	1,847 pg/μl	Result Flagging Color:	
rRNA Ratio [28s / 18s]:	0.0	Result Flagging Label:	RIN: 2.50

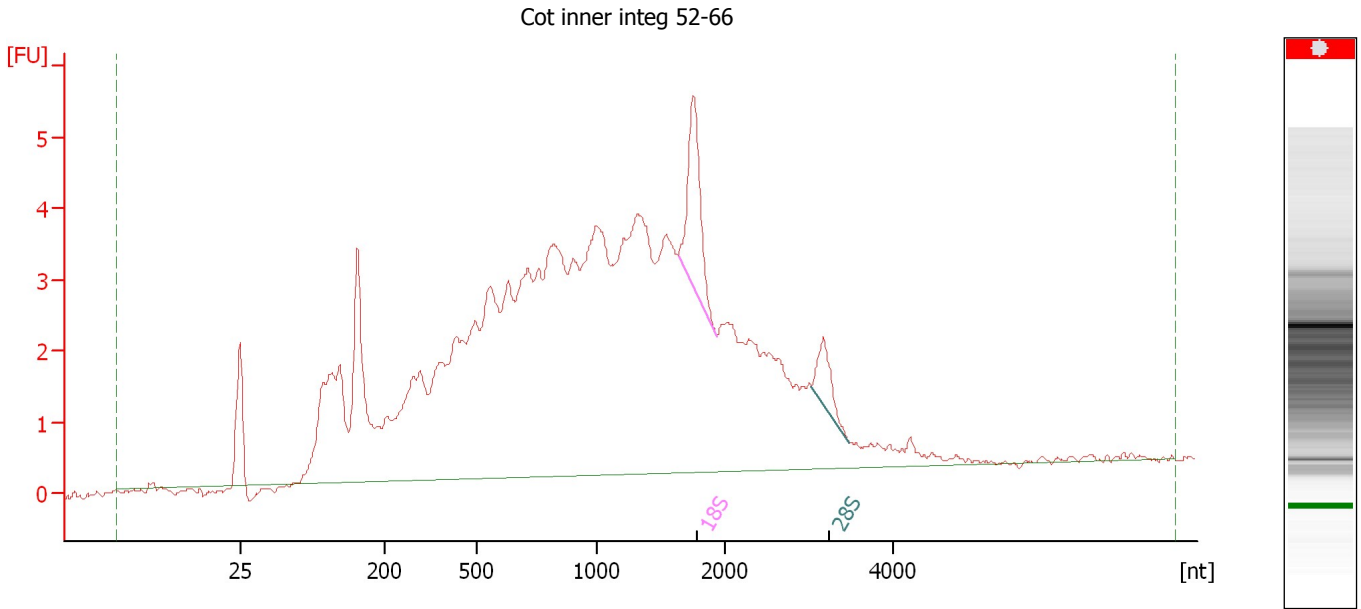
Fragment table for sample 3 : EM scr. for SAM embed 2/10

Name	Start Size [nt]	End Size [nt]	Area	% of total Area
18S	1,164	1,496	2.9	1.6

Assay Class: Eukaryote Total RNA Pico
Data Path: C:\...ents and Settings\Bioanalyzer\2012-02-21\2012-02-21_006.xad

Created: 2/21/2012 3:38:19 PM
Modified: 2/21/2012 4:01:20 PM

Electropherogram Summary Continued ...



Overall Results for sample 4 : Cot inner integ 52-66

RNA Area: 136.3 RNA Integrity Number (RIN): N/A (B.02.08)
RNA Concentration: 1,377 pg/μl Result Flagging Color:
rRNA Ratio [28s / 18s]: 0.3 Result Flagging Label: RIN N/A

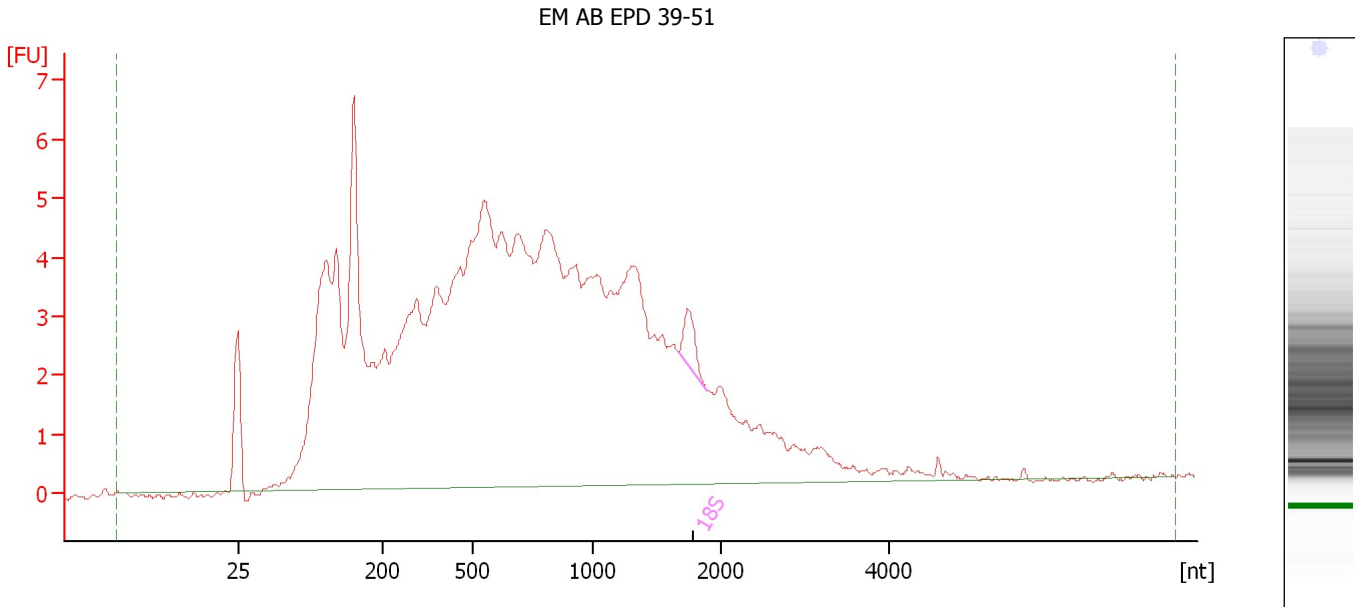
Fragment table for sample 4 : Cot inner integ 52-66

Name	Start Size [nt]	End Size [nt]	Area	% of total Area
18S	1,630	1,928	3.9	2.8
28S	3,027	3,488	1.2	0.9

Assay Class: Eukaryote Total RNA Pico
Data Path: C:\...ents and Settings\Bioanalyzer\2012-02-21\2012-02-21_006.xad

Created: 2/21/2012 3:38:19 PM
Modified: 2/21/2012 4:01:20 PM

Electropherogram Summary Continued ...



Overall Results for sample 5 : EM AB EPD 39-51

RNA Area:	180.2	RNA Integrity Number (RIN):	2.2 (B.02.08)
RNA Concentration:	1,821 pg/μl	Result Flagging Color:	
rRNA Ratio [28s / 18s]:	0.0	Result Flagging Label:	RIN: 2.20

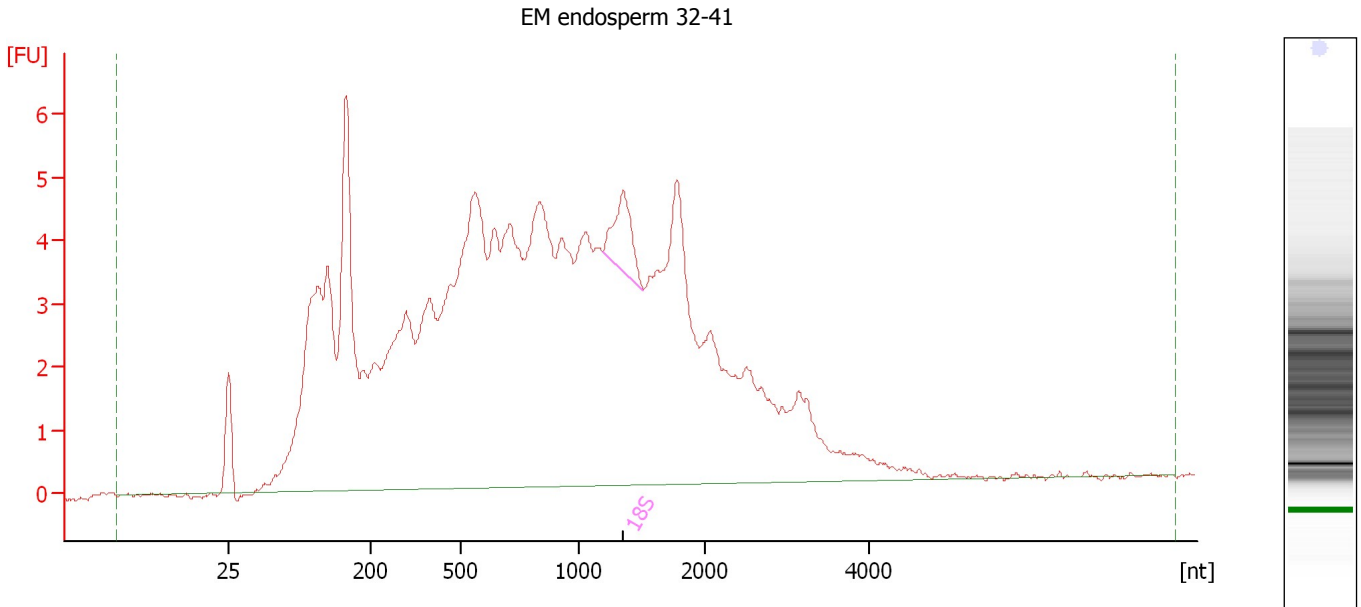
Fragment table for sample 5 : EM AB EPD 39-51

Name	Start Size [nt]	End Size [nt]	Area	% of total Area
18S	1,660	1,885	1.3	0.7

Assay Class: Eukaryote Total RNA Pico
 Data Path: C:\...ents and Settings\Bioanalyzer\2012-02-21\2012-02-21_006.xad

Created: 2/21/2012 3:38:19 PM
 Modified: 2/21/2012 4:01:20 PM

Electropherogram Summary Continued ...



Overall Results for sample 6 : EM endosperm 32-41

RNA Area:	194.6	RNA Integrity Number (RIN):	2.5 (B.02.08)
RNA Concentration:	1,966 µg/µl	Result Flagging Color:	
rRNA Ratio [28s / 18s]:	0.0	Result Flagging Label:	RIN: 2.50

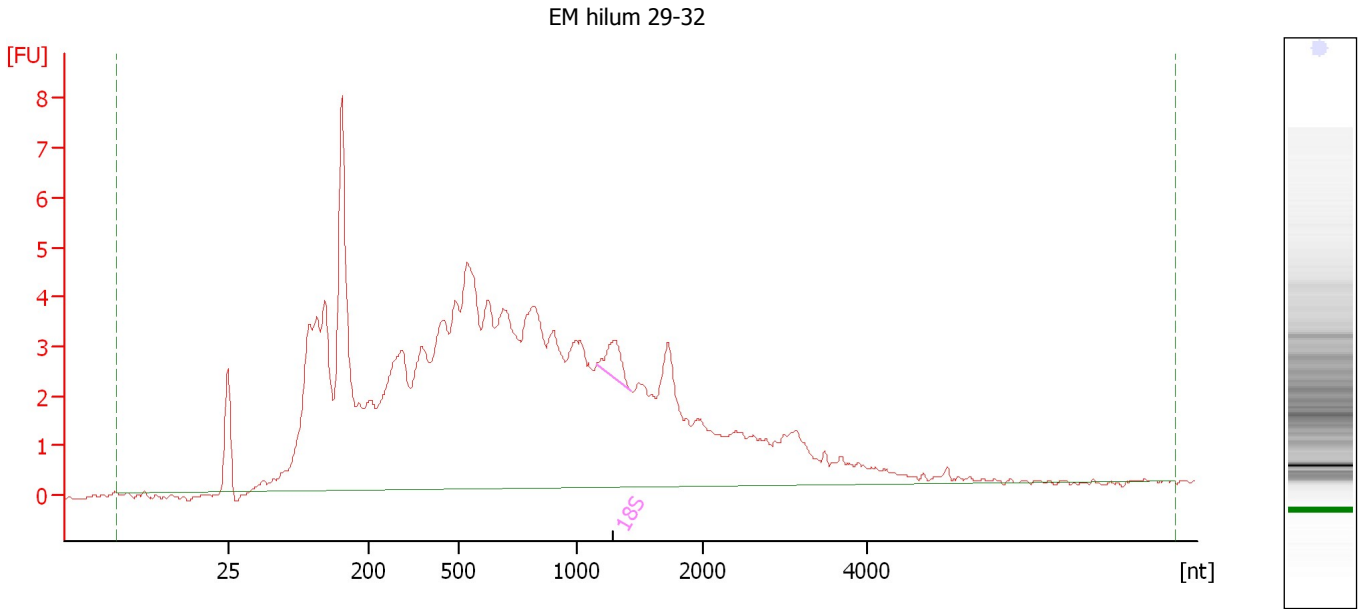
Fragment table for sample 6 : EM endosperm 32-41

Name	Start Size [nt]	End Size [nt]	Area	% of total Area
18S	1,192	1,513	2.7	1.4

Assay Class: Eukaryote Total RNA Pico
Data Path: C:\...ents and Settings\Bioanalyzer\2012-02-21\2012-02-21_006.xad

Created: 2/21/2012 3:38:19 PM
Modified: 2/21/2012 4:01:20 PM

Electropherogram Summary Continued ...



Overall Results for sample 7 : EM hilum 29-32

RNA Area:	159.4	RNA Integrity Number (RIN):	2.3 (B.02.08)
RNA Concentration:	1,611 pg/μl	Result Flagging Color:	
rRNA Ratio [28s / 18s]:	0.0	Result Flagging Label:	RIN: 2.30

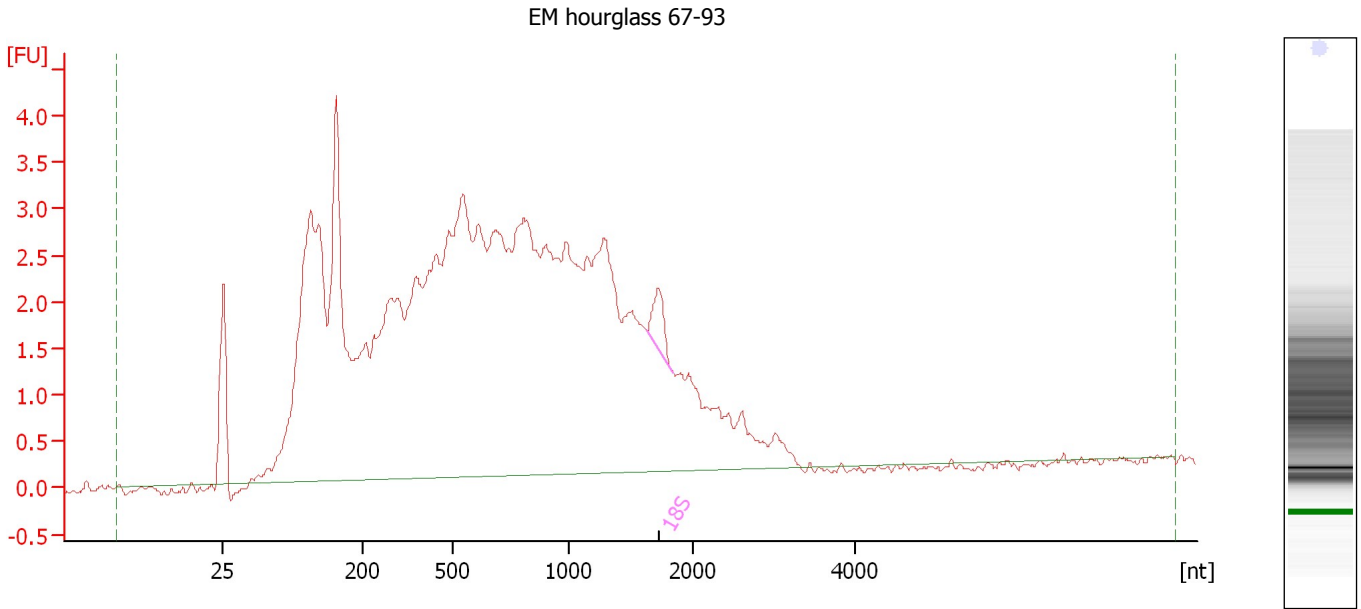
Fragment table for sample 7 : EM hilum 29-32

Name	Start Size [nt]	End Size [nt]	Area	% of total Area
18S	1,155	1,418	1.4	0.9

Assay Class: Eukaryote Total RNA Pico
Data Path: C:\...ents and Settings\Bioanalyzer\2012-02-21\2012-02-21_006.xad

Created: 2/21/2012 3:38:19 PM
Modified: 2/21/2012 4:01:20 PM

Electropherogram Summary Continued ...



Overall Results for sample 8 : EM hourglass 67-93

RNA Area:	116.5	RNA Integrity Number (RIN):	2.3 (B.02.08)
RNA Concentration:	1,177 pg/μl	Result Flagging Color:	
rRNA Ratio [28s / 18s]:	0.0	Result Flagging Label:	RIN: 2.30

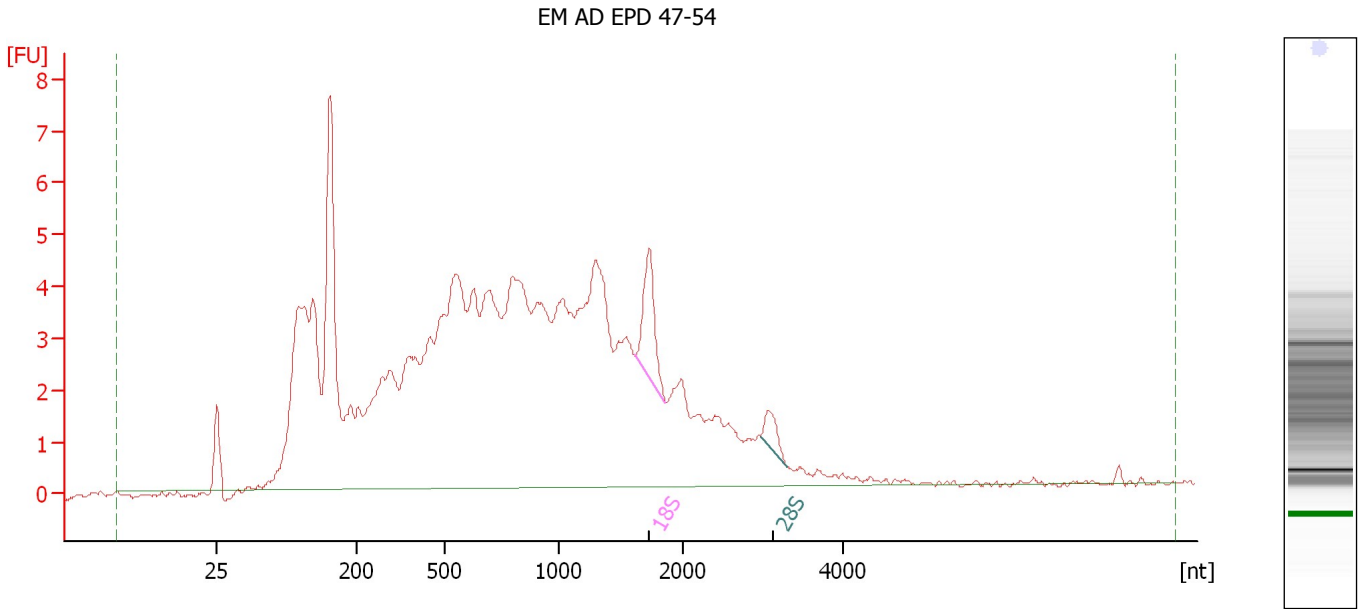
Fragment table for sample 8 : EM hourglass 67-93

Name	Start Size [nt]	End Size [nt]	Area	% of total Area
18S	1,621	1,844	0.9	0.7

Assay Class: Eukaryote Total RNA Pico
 Data Path: C:\...ents and Settings\Bioanalyzer\2012-02-21\2012-02-21_006.xad

Created: 2/21/2012 3:38:19 PM
 Modified: 2/21/2012 4:01:20 PM

Electropherogram Summary Continued ...



Overall Results for sample 9 : EM AD EPD 47-54

RNA Area:	169.8	RNA Integrity Number (RIN):	2.8 (B.02.08)
RNA Concentration:	1,716 µg/µl	Result Flagging Color:	
rRNA Ratio [28s / 18s]:	0.3	Result Flagging Label:	RIN: 2.80

Fragment table for sample 9 : EM AD EPD 47-54

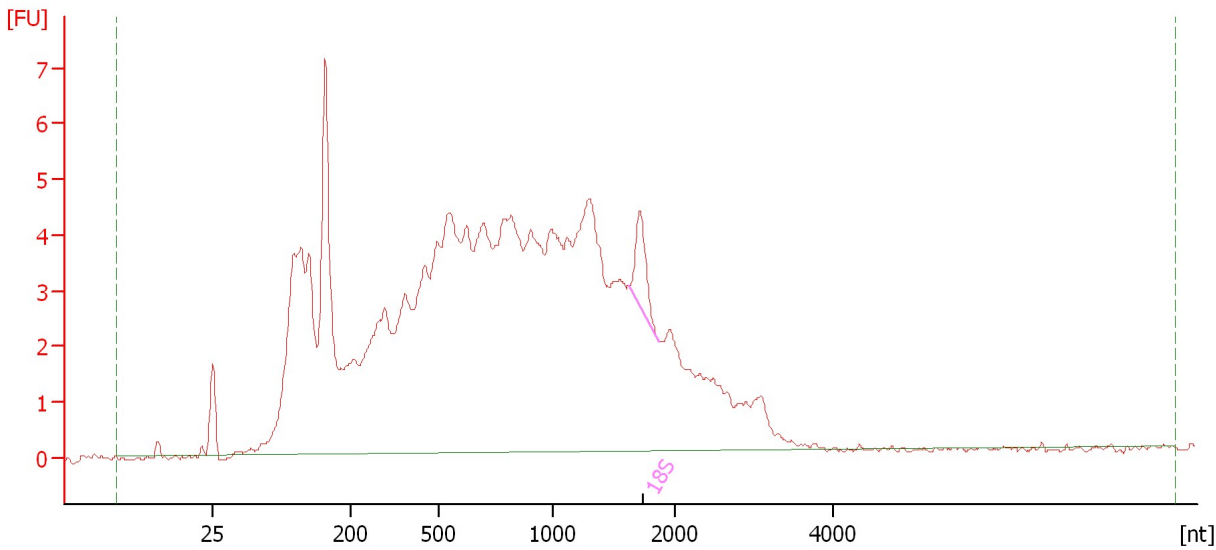
Name	Start Size [nt]	End Size [nt]	Area	% of total Area
18S	1,605	1,855	3.4	2.0
28S	2,964	3,297	0.9	0.6

Assay Class: Eukaryote Total RNA Pico
Data Path: C:\...ents and Settings\Bioanalyzer\2012-02-21\2012-02-21_006.xad

Created: 2/21/2012 3:38:19 PM
Modified: 2/21/2012 4:01:20 PM

Electropherogram Summary Continued ...

EM vasc bundle 26-33



Overall Results for sample 10 : EM vasc bundle 26-33

RNA Area:	178.5	RNA Integrity Number (RIN):	2.4 (B.02.08)
RNA Concentration:	1,803 pg/μl	Result Flagging Color:	
rRNA Ratio [28s / 18s]:	0.0	Result Flagging Label:	RIN: 2.40

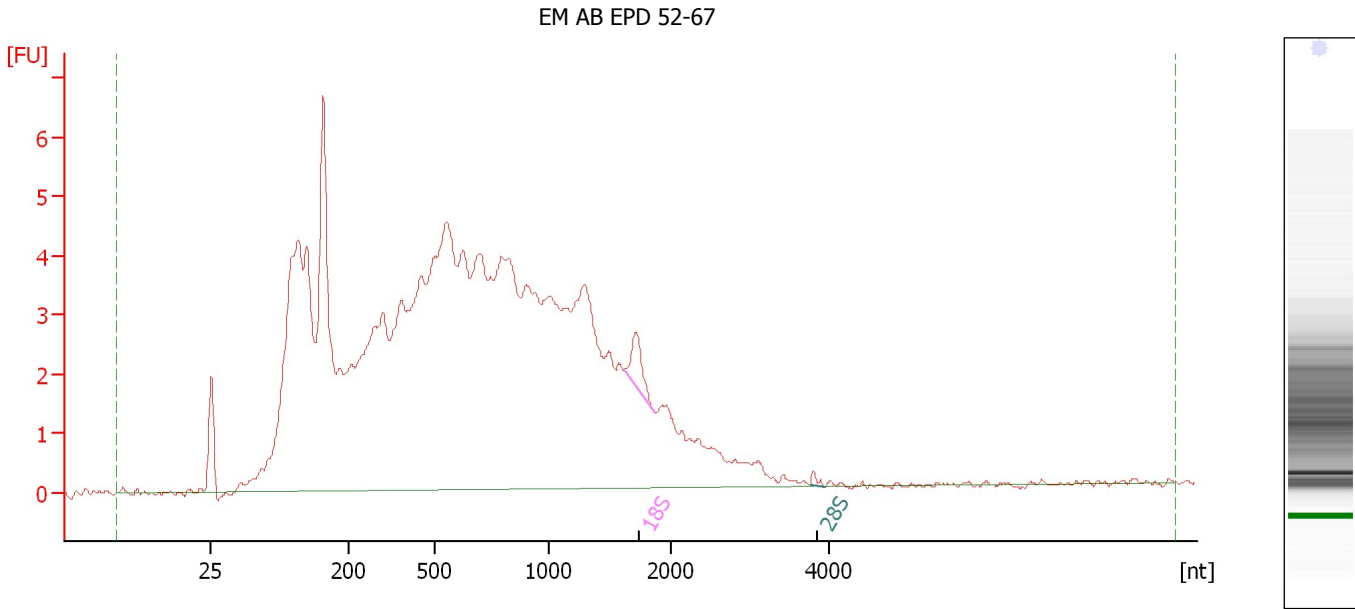
Fragment table for sample 10 : EM vasc bundle 26-33

Name	Start Size [nt]	End Size [nt]	Area	% of total Area
18S	1,624	1,868	2.2	1.3

Assay Class: Eukaryote Total RNA Pico
 Data Path: C:\...ents and Settings\Bioanalyzer\2012-02-21\2012-02-21_006.xad

Created: 2/21/2012 3:38:19 PM
 Modified: 2/21/2012 4:01:20 PM

Electropherogram Summary Continued ...



Overall Results for sample 11 : EM AB EPD 52-67

RNA Area:	168.4	RNA Integrity Number (RIN):	2.2 (B.02.08)
RNA Concentration:	1,701 pg/μl	Result Flagging Color:	
rRNA Ratio [28s / 18s]:	0.1	Result Flagging Label:	RIN: 2.20

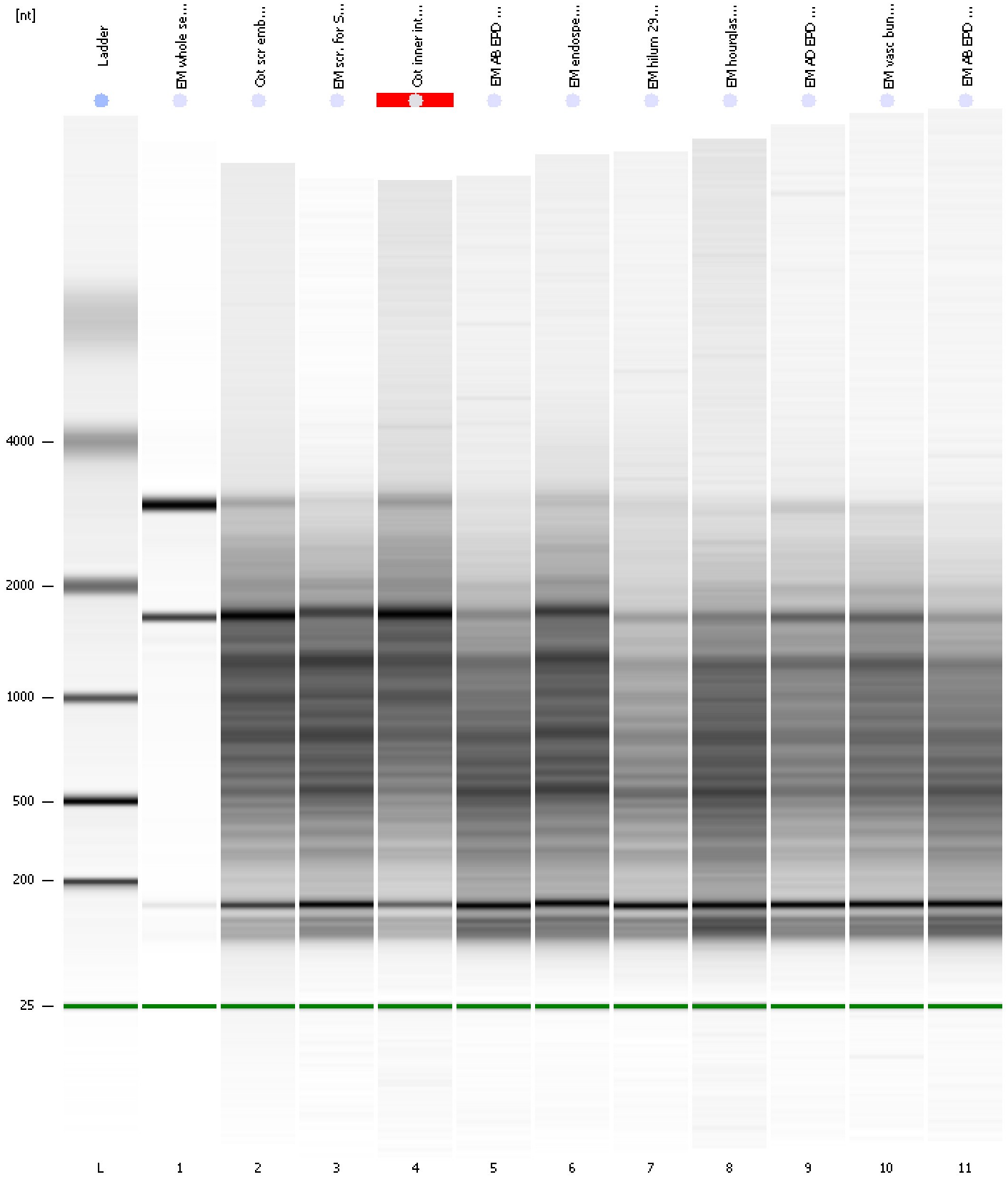
Fragment table for sample 11 : EM AB EPD 52-67

Name	Start Size [nt]	End Size [nt]	Area	% of total Area
18S	1,621	1,866	1.2	0.7
28S	3,765	3,940	0.1	0.1

Assay Class: Eukaryote Total RNA Pico
Data Path: C:\...ents and Settings\Bioanalyzer\2012-02-21\2012-02-21_006.xad

Created: 2/21/2012 3:38:19 PM
Modified: 2/21/2012 4:01:20 PM

Gel Image



Assay Class: Eukaryote Total RNA Pico
 Data Path: C:\...ents and Settings\Bioanalyzer\2012-02-21\2012-02-21_006.xad

Created: 2/21/2012 3:38:19 PM
 Modified: 2/21/2012 4:01:20 PM

Run Logbook

Description	Number	Source	Category	Sub Category	Time	Time Zone	User	Host
Run ended on port 1 (Number of wells acquired: 12)		Instrument	Run		2/21/2012 4:01:15 PM	(GMT --08:00) Pacific Standard Time	UC Davis	D8XSMGH1
Run started on port 1 (File: C:\Documents and Settings\Bioanalyzer\2012-02-21\2012-02-21_006.xad)		Instrument	Run		2/21/2012 3:38:26 PM	(GMT --08:00) Pacific Standard Time	UC Davis	D8XSMGH1
Product Number : G2938B		Instrument	Run		2/21/2012 3:38:26 PM	(GMT --08:00) Pacific Standard Time	UC Davis	D8XSMGH1
Name :		Instrument	Run		2/21/2012 3:38:26 PM	(GMT --08:00) Pacific Standard Time	UC Davis	D8XSMGH1
Vendor : Agilent Technologies		Instrument	Run		2/21/2012 3:38:26 PM	(GMT --08:00) Pacific Standard Time	UC Davis	D8XSMGH1
Serial# : DE13701086		Instrument	Run		2/21/2012 3:38:26 PM	(GMT --08:00) Pacific Standard Time	UC Davis	D8XSMGH1
Firmware : C.01.069		Instrument	Run		2/21/2012 3:38:26 PM	(GMT --08:00) Pacific Standard Time	UC Davis	D8XSMGH1
Cartridge : Electrode		Instrument	Run		2/21/2012 3:38:26 PM	(GMT --08:00) Pacific Standard Time	UC Davis	D8XSMGH1