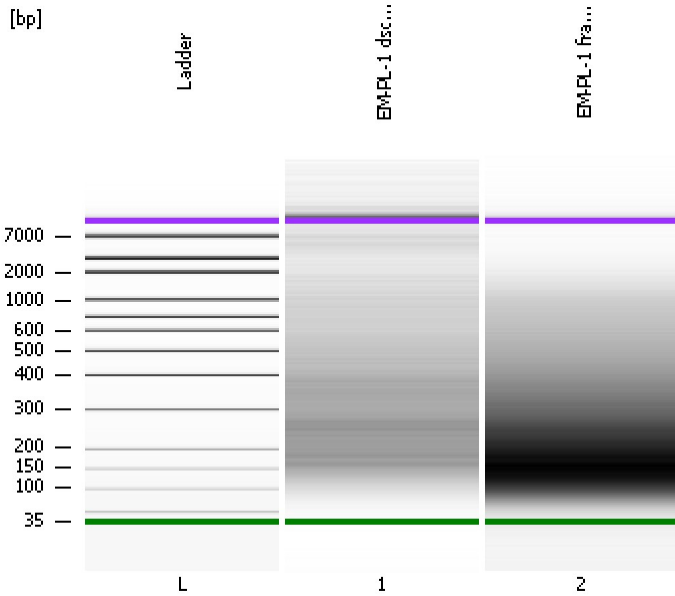


Assay Class: High Sensitivity DNA Assay  
Data Path: C:\...nts and Settings\Bioanalyzer\2012-02-22\2012-02-22\_002B.xad

Created: 2/22/2012 10:15:34 AM  
Modified: 2/22/2012 10:40:38 AM

**Electrophoresis File Run Summary**



Instrument Information:

Instrument Name: DE13701086      Firmware: C.01.069  
Serial#: DE13701086      Type: G2938B

Assay Information:

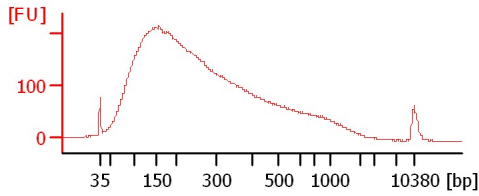
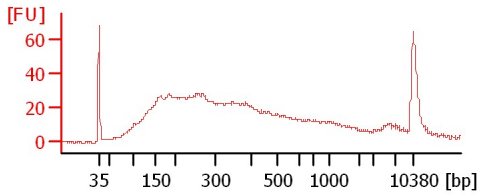
Assay Origin Path: C:\Program Files\Agilent\2100 bioanalyzer\2100 expert\assays\dscDNA\High Sensitivity DNA.xsy  
Assay Class: High Sensitivity DNA Assay  
Version: 1.03  
Assay Comments: Copyright © 2003-2010 Agilent Technologies

Chip Information:

Chip Lot #:  
Reagent Kit Lot #:  
Chip Comments:

EM-PL-1 dscDNA

EM-PL-1 frag dscDNA



Assay Class: High Sensitivity DNA Assay  
Data Path: C:\...nts and Settings\Bioanalyzer\2012-02-22\2012-02-22\_002B.xad

Created: 2/22/2012 10:15:34 AM  
Modified: 2/22/2012 10:40:38 AM

**Electrophoresis File Run Summary (Chip Summary)**

Sample Name	Sample Comment	Rest. Digest	Status	Observation	Result Label	Result Color
EM-PL-1 dscDNA		<input type="checkbox"/>				
EM-PL-1 frag dscDNA		<input type="checkbox"/>				
Ladder		<input type="checkbox"/>				

**Chip Lot #****Reagent Kit Lot #****Chip Comments :**

Assay Class: High Sensitivity DNA Assay  
Data Path: C:\...nts and Settings\Bioanalyzer\2012-02-22\2012-02-22\_002B.xad

Created: 2/22/2012 10:15:34 AM  
Modified: 2/22/2012 10:40:38 AM

**Electrophoresis Assay Details**

**General Analysis Settings**

Number of Available Sample and Ladder Wells (Max.) : 12  
Minimum Visible Range [s] : 32  
Maximum Visible Range [s] : 138  
Start Analysis Time Range [s] : 33  
End Analysis Time Range [s] : 137.5  
Ladder Concentration [pg/μl] : 1950  
Uses Standard Area for Ladder Fragments  
Lower Marker Concentration [pg/μl] : 125  
Upper Marker Concentration [pg/μl] : 75  
Used Upper Marker for Quantitation  
Standard Curve Fit is Point to Point  
Show Data Aligned to Lower and Upper Marker

**Integrator Settings**

Integration Start Time [s] : 33.05  
Integration End Time [s] : 137  
Slope Threshold : 0.8  
Height Threshold [FU] : 5  
Area Threshold : 0.1  
Width Threshold [s] : 0.6  
Baseline Plateau [s] : 0.5

**Filter Settings**

Filter Width [s] : 0.5  
Polynomial Order : 4

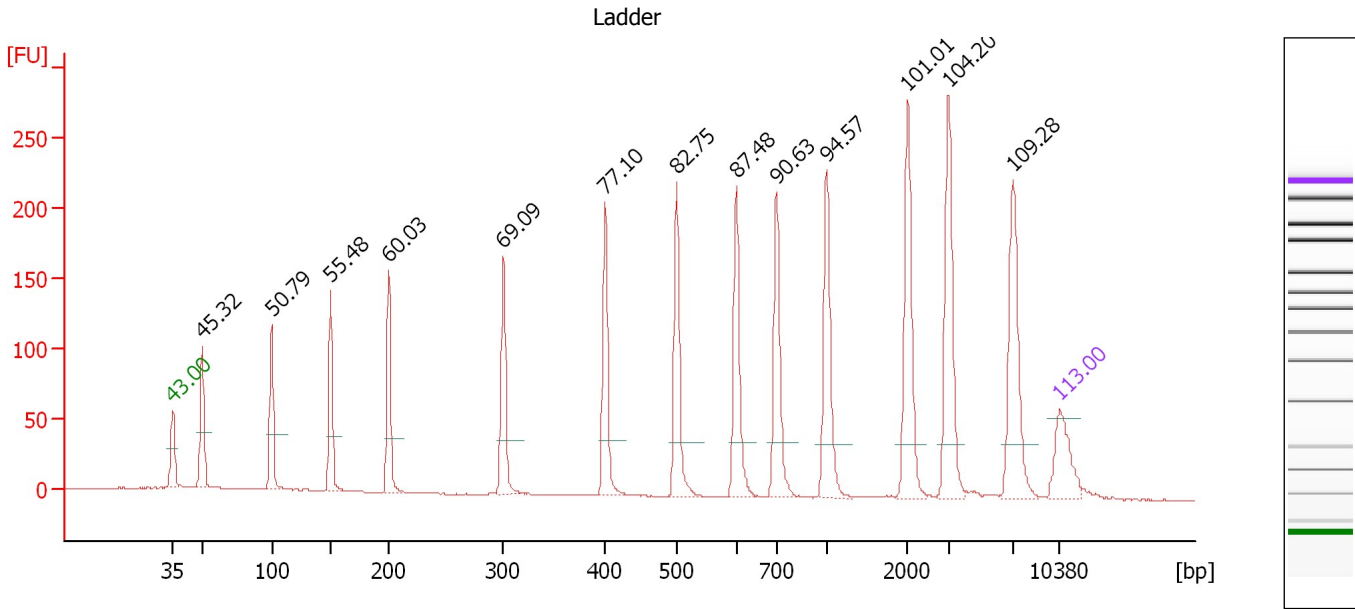
**Ladder**

Ladder Peak	Size	Area
1	35	160
2	50	210
3	100	208
4	150	221
5	200	242
6	300	270
7	400	305
8	500	306
9	600	336
10	700	321
11	1000	366
12	2000	413
13	3000	411
14	7000	400
15	10380	214

Assay Class: High Sensitivity DNA Assay  
 Data Path: C:\...nts and Settings\Bioanalyzer\2012-02-22\2012-02-22\_002B.xad

Created: 2/22/2012 10:15:34 AM  
 Modified: 2/22/2012 10:40:38 AM

**Electropherogram Summary**



**Overall Results for Ladder**

Noise: 0.2

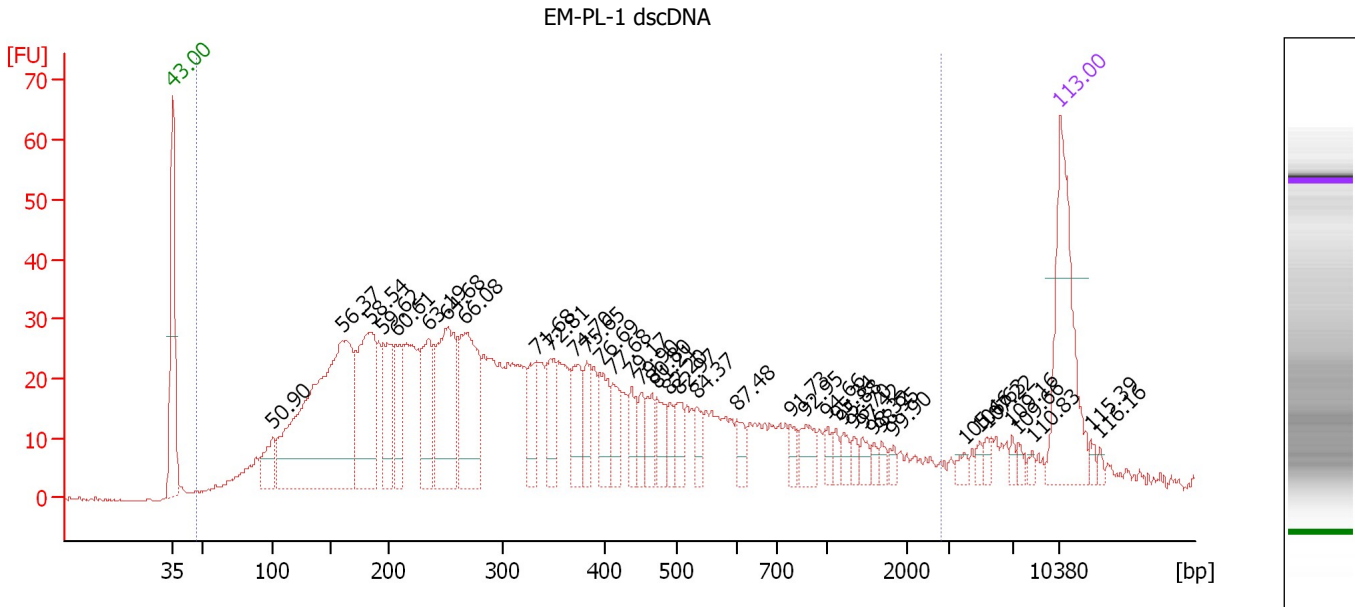
**Peak table for Ladder**

Peak	Size [bp]	Conc. [pg/μl]	Molarity [pmol/l]	Observations
1	35	125.00	5,411.3	Lower Marker
2	50	150.00	4,545.5	Ladder Peak
3	100	150.00	2,272.7	Ladder Peak
4	150	150.00	1,515.2	Ladder Peak
5	200	150.00	1,136.4	Ladder Peak
6	300	150.00	757.6	Ladder Peak
7	400	150.00	568.2	Ladder Peak
8	500	150.00	454.5	Ladder Peak
9	600	150.00	378.8	Ladder Peak
10	700	150.00	324.7	Ladder Peak
11	1,000	150.00	227.3	Ladder Peak
12	2,000	150.00	113.6	Ladder Peak
13	3,000	150.00	75.8	Ladder Peak
14	7,000	150.00	32.5	Ladder Peak
15	10,380	75.00	10.9	Upper Marker

Assay Class: High Sensitivity DNA Assay  
 Data Path: C:\...nts and Settings\Bioanalyzer\2012-02-22\2012-02-22\_002B.xad

Created: 2/22/2012 10:15:34 AM  
 Modified: 2/22/2012 10:40:38 AM

**Electropherogram Summary Continued ...**



**Overall Results for sample 1 : EM-PL-1 dscDNA**

Number of peaks found: 40                      Corr. Area 1: 1,376.8  
 Noise: 0.2

**Peak table for sample 1 : EM-PL-1 dscDNA**

Peak	Size [bp]	Conc. [pg/μl]	Molarity [pmol/l]	Observations
1	35	125.00	5,411.3	Lower Marker
2	101	31.86	477.0	
3	160	327.73	3,107.6	
4	184	118.85	980.8	
5	195	53.68	416.1	
6	206	43.03	315.8	
7	235	56.24	362.8	
8	251	110.53	666.4	
9	267	100.54	571.1	
10	332	32.35	147.5	
11	346	33.86	148.1	
12	370	33.74	138.2	
13	382	22.11	87.7	
14	395	30.26	116.1	
15	410	23.50	86.8	
16	437	16.90	58.6	
17	449	14.24	48.0	
18	465	16.96	55.2	
19	473	18.04	57.8	
20	490	12.43	38.4	
21	505	16.95	50.9	
22	534	13.42	38.1	
23	600	11.21	28.3	
24	784	7.78	15.0	
25	877	16.08	27.8	
26	1,015	6.47	9.7	

Assay Class: High Sensitivity DNA Assay  
 Data Path: C:\...nts and Settings\Bioanalyzer\2012-02-22\2012-02-22\_002B.xad

Created: 2/22/2012 10:15:34 AM  
 Modified: 2/22/2012 10:40:38 AM

**Electropherogram Summary Continued ...**

**... Peak table for sample 1 : EM-PL-1 dscDNA**

Peak	Size [bp]	Conc. [pg/μl]	Molarity [pmol/l]	Observations
27	1,120	6.01	8.1	
28	1,204	7.09	8.9	
29	1,331	4.99	5.7	
30	1,443	6.26	6.6	
31	1,583	3.88	3.7	
32	1,681	4.31	3.9	
33	1,829	4.00	3.3	
34	3,990	4.47	1.7	
35	4,915	3.48	1.1	
36	5,378	4.52	1.3	
37	6,907	3.53	0.8	
38	7,344	3.44	0.7	
39	8,411	2.57	0.5	
40	▶ 10,380	75.00	10.9	Upper Marker
41	12,554	0.00	0.0	
42	13,252	0.00	0.0	

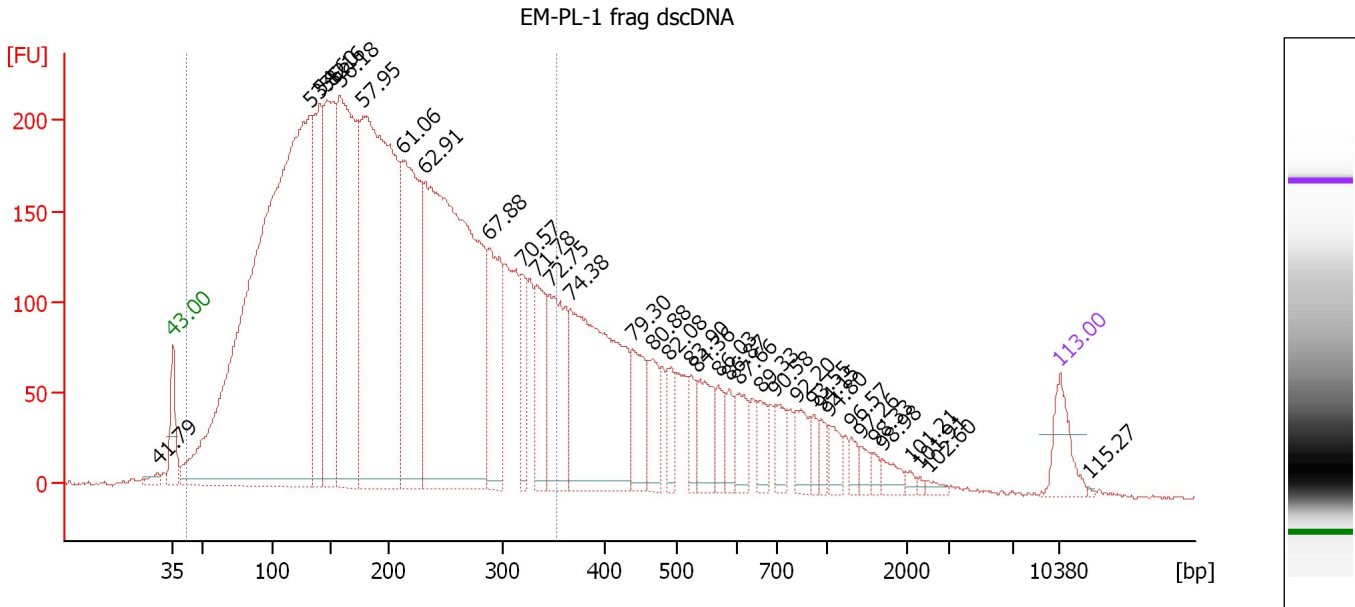
**Region table for sample 1 : EM-PL-1 dscDNA**

From [bp]	Molarity [pmol/l]	Average Size [bp]	Conc. [pg/μl]	To [bp]	Corr. Area	% of Total	Size distribution in CV [%]	Color
47	13,085.7	435	1,939.32	2,805	1,376.8	94	93.4	■

Assay Class: High Sensitivity DNA Assay  
 Data Path: C:\...nts and Settings\Bioanalyzer\2012-02-22\2012-02-22\_002B.xad

Created: 2/22/2012 10:15:34 AM  
 Modified: 2/22/2012 10:40:38 AM

**Electropherogram Summary Continued ...**



**Overall Results for sample 2 : EM-PL-1 frag dscDNA**

Number of peaks found: 35                      Corr. Area 1: 7,440.0  
 Noise: 1.2

**Peak table for sample 2 : EM-PL-1 frag dscDNA**

Peak	Size [bp]	Conc. [pg/μl]	Molarity [pmol/l]	Observations
1	31	0.00	0.0	
2	35	125.00	5,411.3	Lower Marker
3	132	3,427.14	39,257.4	
4	141	533.88	5,749.4	
5	147	685.08	7,078.5	
6	158	1,097.55	10,541.1	
7	177	1,689.32	14,450.2	
8	211	755.11	5,413.6	
9	232	1,778.90	11,626.2	
10	287	324.86	1,717.2	
11	318	133.10	633.2	
12	334	202.99	922.0	
13	346	303.95	1,332.1	
14	366	712.20	2,948.3	
15	439	147.28	508.4	
16	467	102.41	332.4	
17	488	72.43	224.8	
18	524	56.63	163.7	
19	534	120.85	342.9	
20	569	57.80	153.8	
21	587	48.07	124.1	
22	606	73.38	183.6	
23	659	54.46	125.3	
24	698	57.80	125.4	
25	820	64.55	119.3	
26	922	29.86	49.1	

Assay Class: High Sensitivity DNA Assay  
 Data Path: C:\...nts and Settings\Bioanalyzer\2012-02-22\2012-02-22\_002B.xad


Created: 2/22/2012 10:15:34 AM  
 Modified: 2/22/2012 10:40:38 AM

**Electropherogram Summary Continued ...**

**... Peak table for sample 2 : EM-PL-1 frag dscDNA**

Peak	Size [bp]	Conc. [pg/μl]	Molarity [pmol/l]	Observations
27	968	25.70	40.2	
28	1,036	41.02	60.0	
29	1,310	21.10	24.4	
30	1,419	22.26	23.8	
31	1,585	14.07	13.5	
32	1,686	28.25	25.4	
33	2,064	8.92	6.5	
34	2,282	4.71	3.1	
35	2,500	10.03	6.1	
36	10,380	75.00	10.9	Upper Marker
37	12,446	0.00	0.0	

**Region table for sample 2 : EM-PL-1 frag dscDNA**

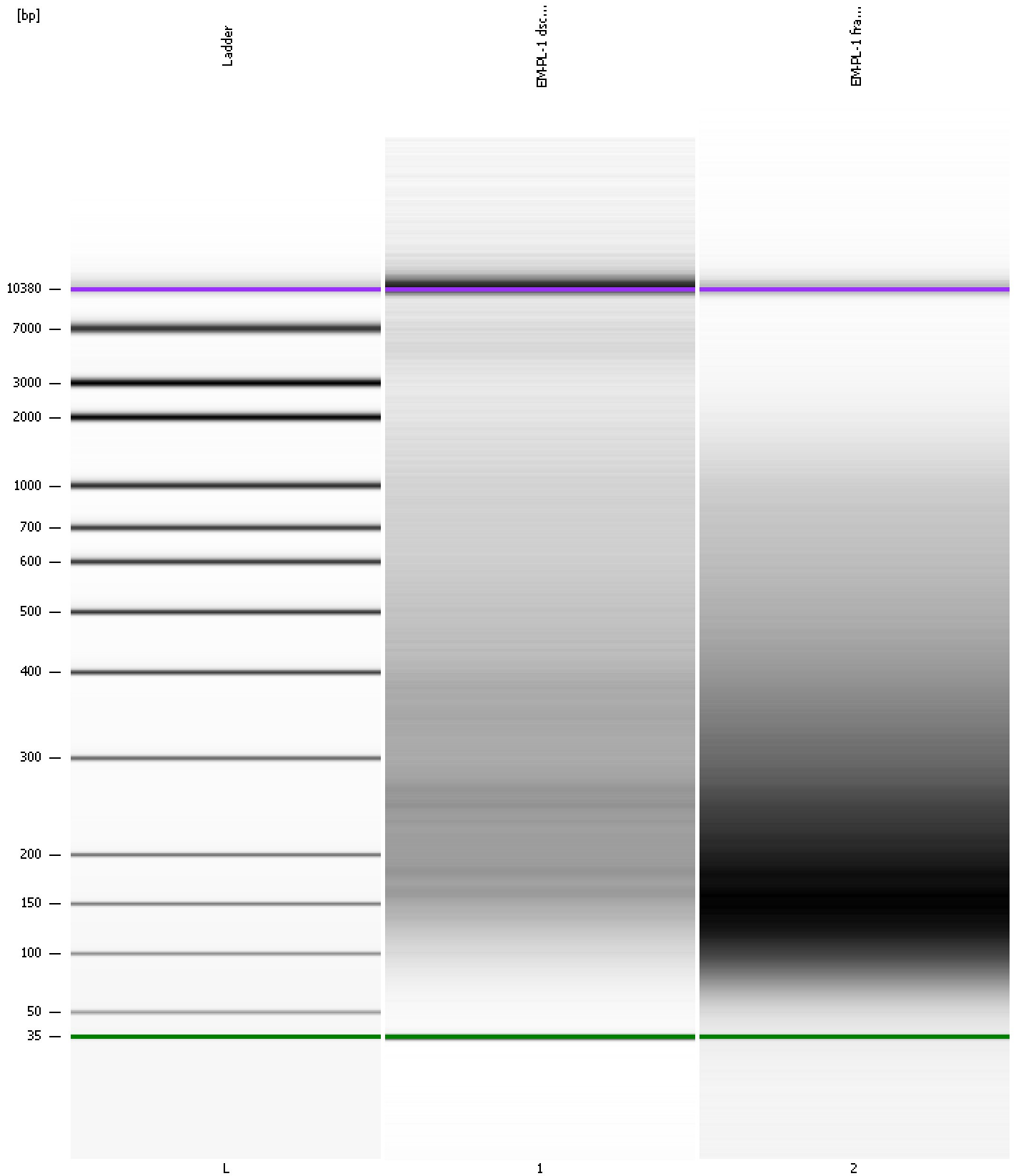
From [bp]	Molarity [pmol/l]	Average Size [bp]	Conc. [pg/μl]	To [bp]	Corr. Area	% of Total	Size distribution in CV [%]	Color
42	114,732.0	194	11,269.83	352	7,440.0	78	39.4	



Assay Class: High Sensitivity DNA Assay  
Data Path: C:\...nts and Settings\Bioanalyzer\2012-02-22\2012-02-22\_002B.xad

Created: 2/22/2012 10:15:34 AM  
Modified: 2/22/2012 10:40:38 AM

**Gel Image**



Assay Class: High Sensitivity DNA Assay  
 Data Path: C:\...nts and Settings\Bioanalyzer\2012-02-22\2012-02-22\_002B.xad

Created: 2/22/2012 10:15:34 AM  
 Modified: 2/22/2012 10:40:38 AM

**Run Logbook**

Description	Number	Source	Category	Sub Category	Time	Time Zone	User	Host
Run aborted on port 1		Instrument	Run		2/22/2012 10:35:35 AM	(GMT --08:00) Pacific Standard Time	UC Davis	D8XSMGH1
Run started on port 1 (File: C:\Documents and Settings\Bioanalyzer\2012-02-22\2012-02-22_002.xad)		Instrument	Run		2/22/2012 10:15:41 AM	(GMT --08:00) Pacific Standard Time	UC Davis	D8XSMGH1
Product Number : G2938B		Instrument	Run		2/22/2012 10:15:41 AM	(GMT --08:00) Pacific Standard Time	UC Davis	D8XSMGH1
Name :		Instrument	Run		2/22/2012 10:15:41 AM	(GMT --08:00) Pacific Standard Time	UC Davis	D8XSMGH1
Vendor : Agilent Technologies		Instrument	Run		2/22/2012 10:15:41 AM	(GMT --08:00) Pacific Standard Time	UC Davis	D8XSMGH1
Serial# : DE13701086		Instrument	Run		2/22/2012 10:15:41 AM	(GMT --08:00) Pacific Standard Time	UC Davis	D8XSMGH1
Firmware : C.01.069		Instrument	Run		2/22/2012 10:15:41 AM	(GMT --08:00) Pacific Standard Time	UC Davis	D8XSMGH1
Cartridge : Electrode		Instrument	Run		2/22/2012 10:15:41 AM	(GMT --08:00) Pacific Standard Time	UC Davis	D8XSMGH1