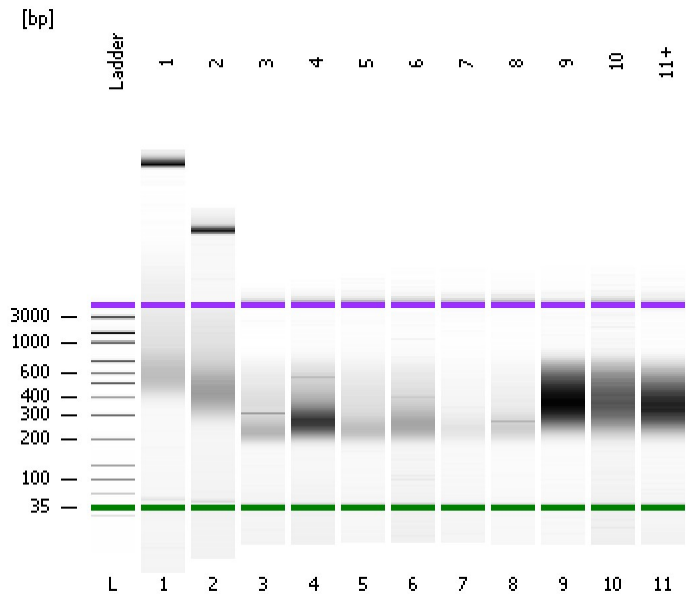


Assay Class: High Sensitivity DNA Assay
Data Path: C:\...ents and Settings\Bioanalyzer\2012-02-22\2012-02-22_003.xad

Created: 2/22/2012 11:17:48 AM
Modified: 2/22/2012 12:00:00 PM

Electrophoresis File Run Summary



Instrument Information:

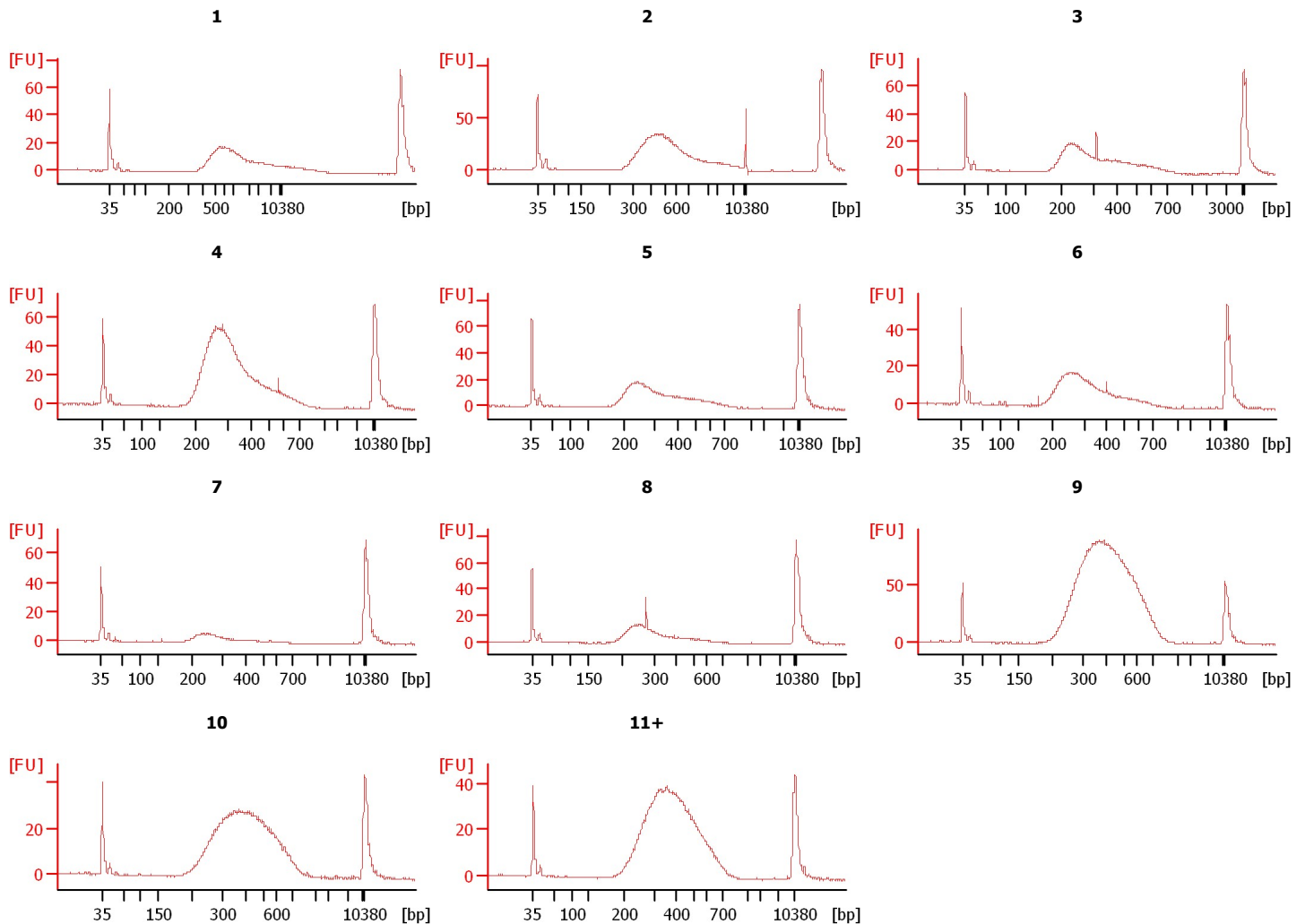
Instrument Name: DE13701086 Firmware: C.01.069
Serial#: DE13701086 Type: G2938B

Assay Information:

Assay Origin Path: C:\Program Files\Agilent\2100 bioanalyzer\2100 expert\assays\dsDNA\High Sensitivity DNA.xsy
Assay Class: High Sensitivity DNA Assay
Version: 1.03
Assay Comments: Copyright © 2003-2010 Agilent Technologies

Chip Information:

Chip Lot #:
Reagent Kit Lot #:
Chip Comments:



Assay Class: High Sensitivity DNA Assay
 Data Path: C:\...ents and Settings\Bioanalyzer\2012-02-22\2012-02-22_003.xad

Created: 2/22/2012 11:17:48 AM
 Modified: 2/22/2012 12:00:00 PM

Electrophoresis File Run Summary (Chip Summary)

Sample Name	Sample Comment	Rest. Digest	Status	Observation	Result Label	Result Color
1		<input type="checkbox"/>	✓			
2		<input type="checkbox"/>	✓			
3		<input type="checkbox"/>	✓			
4		<input type="checkbox"/>	✓			
5		<input type="checkbox"/>	✓			
6		<input type="checkbox"/>	✓			
7		<input type="checkbox"/>	✓			
8		<input type="checkbox"/>	✓			
9		<input type="checkbox"/>	✓			
10		<input type="checkbox"/>	✓			
11+		<input type="checkbox"/>	✓			
Ladder		<input type="checkbox"/>	✓			

Chip Lot #

Reagent Kit Lot #

Chip Comments :

Assay Class: High Sensitivity DNA Assay
Data Path: C:\...ents and Settings\Bioanalyzer\2012-02-22\2012-02-22_003.xad

Created: 2/22/2012 11:17:48 AM
Modified: 2/22/2012 12:00:00 PM

Electrophoresis Assay Details

General Analysis Settings

Number of Available Sample and Ladder Wells (Max.) : 12
Minimum Visible Range [s] : 32
Maximum Visible Range [s] : 138
Start Analysis Time Range [s] : 33
End Analysis Time Range [s] : 137.5
Ladder Concentration [pg/μl] : 1950
Uses Standard Area for Ladder Fragments
Lower Marker Concentration [pg/μl] : 125
Upper Marker Concentration [pg/μl] : 75
Used Upper Marker for Quantitation
Standard Curve Fit is Point to Point
Show Data Aligned to Lower and Upper Marker

Integrator Settings

Integration Start Time [s] : 33.05
Integration End Time [s] : 137
Slope Threshold : 0.8
Height Threshold [FU] : 5
Area Threshold : 0.1
Width Threshold [s] : 0.6
Baseline Plateau [s] : 0.5

Filter Settings

Filter Width [s] : 0.5
Polynomial Order : 4

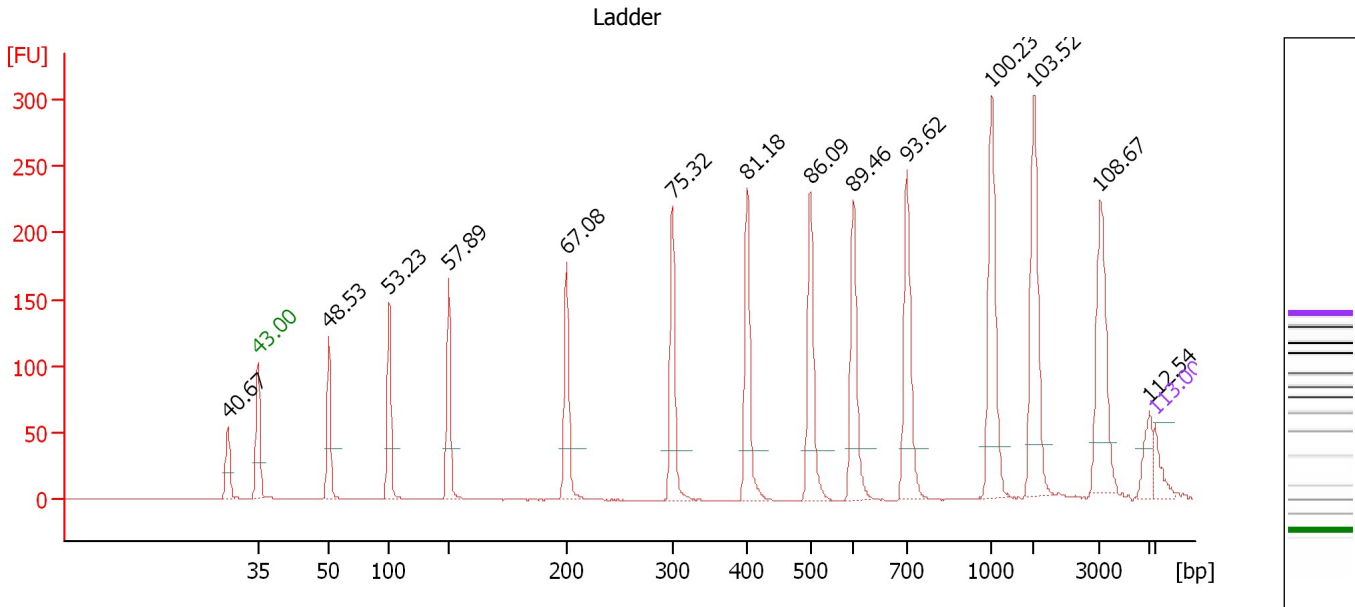
Ladder

Ladder Peak	Size	Area
1	35	160
2	50	210
3	100	208
4	150	221
5	200	242
6	300	270
7	400	305
8	500	306
9	600	336
10	700	321
11	1000	366
12	2000	413
13	3000	411
14	7000	400
15	10380	214

Assay Class: High Sensitivity DNA Assay
 Data Path: C:\...ents and Settings\Bioanalyzer\2012-02-22\2012-02-22_003.xad

Created: 2/22/2012 11:17:48 AM
 Modified: 2/22/2012 12:00:00 PM

Electropherogram Summary



Overall Results for Ladder

Noise: 0.1

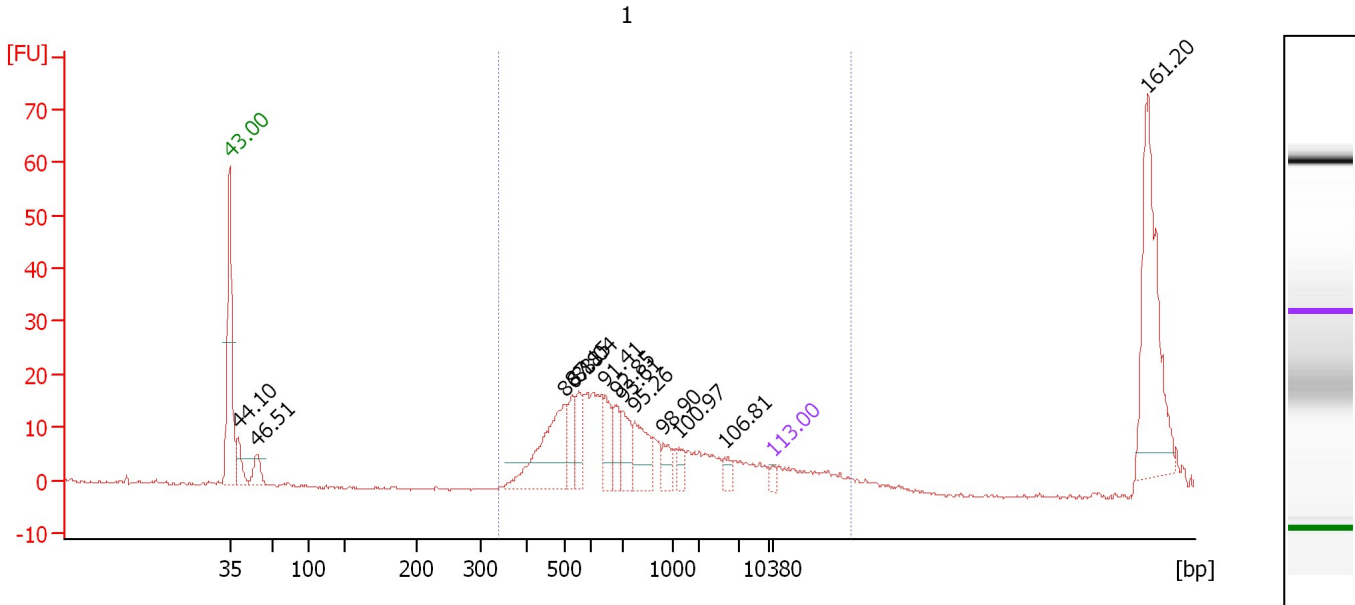
Peak table for Ladder

Peak	Size [bp]	Conc. [pg/μl]	Molarity [pmol/l]	Observations
1	27	0.00	0.0	
2	35	125.00	5,411.3	Lower Marker
3	50	150.00	4,545.5	Ladder Peak
4	100	150.00	2,272.7	Ladder Peak
5	150	150.00	1,515.2	Ladder Peak
6	200	150.00	1,136.4	Ladder Peak
7	300	150.00	757.6	Ladder Peak
8	400	150.00	568.2	Ladder Peak
9	500	150.00	454.5	Ladder Peak
10	600	150.00	378.8	Ladder Peak
11	700	150.00	324.7	Ladder Peak
12	1,000	150.00	227.3	Ladder Peak
13	2,000	150.00	113.6	Ladder Peak
14	3,000	150.00	75.8	Ladder Peak
15	7,000	150.00	32.5	Ladder Peak
16	10,380	75.00	10.9	Upper Marker

Assay Class: High Sensitivity DNA Assay
 Data Path: C:\...ents and Settings\Bioanalyzer\2012-02-22\2012-02-22_003.xad

Created: 2/22/2012 11:17:48 AM
 Modified: 2/22/2012 12:00:00 PM

Electropherogram Summary Continued ...



Overall Results for sample 1 : 1

Number of peaks found: 13 Corr. Area 1: 262.0
 Noise: 0.2

Peak table for sample 1 : 1

Peak	Size [bp]	Conc. [pg/μl]	Molarity [pmol/l]	Observations
1	35	125.00	5,411.3	Lower Marker
2	38	505.60	20,168.5	
3	45	410.31	13,967.3	
4	503	1,743.43	5,254.1	
5	531	484.77	1,382.4	
6	558	495.92	1,346.9	
7	647	466.17	1,091.9	
8	682	353.82	786.5	
9	700	507.12	1,098.0	
10	774	707.46	1,384.1	
11	940	251.86	406.1	
12	1,224	195.47	242.0	
13	2,639	135.74	77.9	
14	10,380	75.00	10.9	Upper Marker
15	366,483	0.00	0.0	

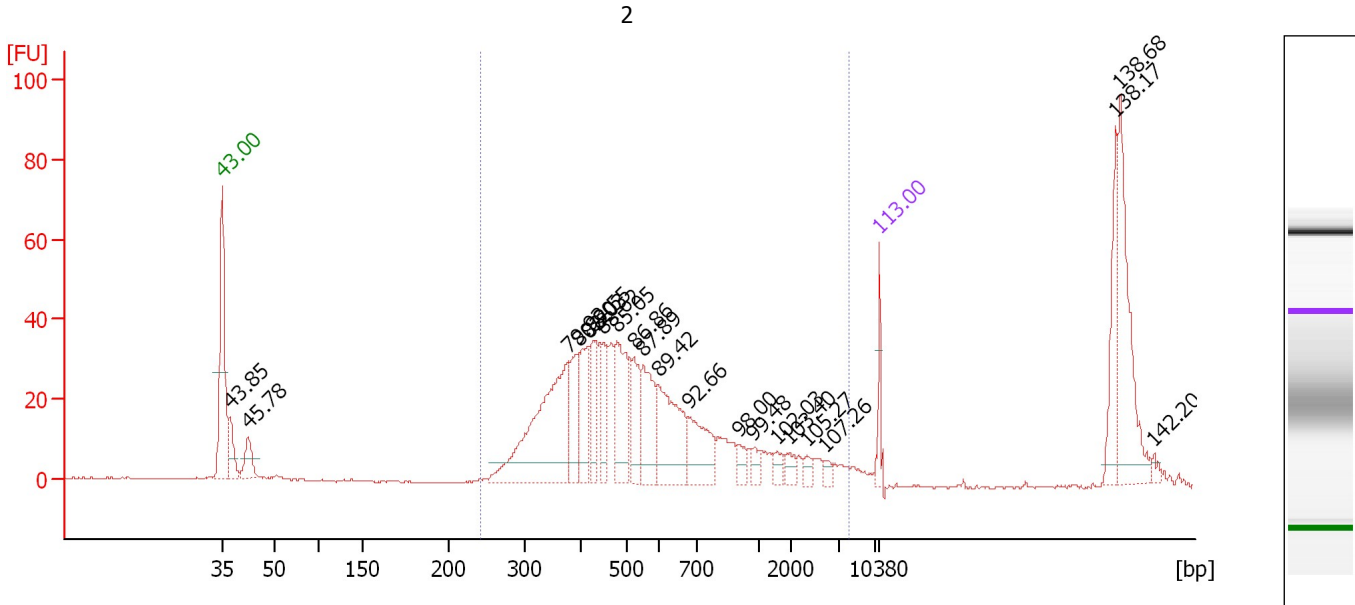
Region table for sample 1 : 1

From [bp]	Molarity [pmol/l]	Average Size [bp]	Conc. [pg/μl]	To [bp]	Corr. Area	% of Total	Size distribution in CV [%]	Color
340	15,708.3	4,014	7,172.91	84,523	262.0	70	100.0	Blue

Assay Class: High Sensitivity DNA Assay
 Data Path: C:\...ents and Settings\Bioanalyzer\2012-02-22\2012-02-22_003.xad

Created: 2/22/2012 11:17:48 AM
 Modified: 2/22/2012 12:00:00 PM

Electropherogram Summary Continued ...



Overall Results for sample 2 : 2

Number of peaks found: 21 Corr. Area 1: 639.1
 Noise: 0.2


Peak table for sample 2 : 2

Peak	Size [bp]	Conc. [pg/μl]	Molarity [pmol/l]	Observations
1	35	125.00	5,411.3	Lower Marker
2	37	207.77	8,437.4	
3	43	176.12	6,271.6	
4	379	1,018.23	4,074.0	
5	395	257.65	987.9	
6	417	282.95	1,027.2	
7	428	217.14	769.1	
8	450	212.41	715.5	
9	479	387.77	1,227.3	
10	523	211.71	613.4	
11	553	312.72	856.3	
12	599	430.99	1,090.4	
13	677	281.87	630.9	
14	899	50.96	85.9	
15	966	53.63	84.1	
16	1,549	43.53	42.6	
17	1,964	43.29	33.4	
18	2,340	32.09	20.8	
19	2,726	25.43	14.1	
20	10,380	75.00	10.9	Upper Marker
21	196,331	0.00	0.0	
22	200,109	0.00	0.0	
23	226,133	0.00	0.0	

Assay Class: High Sensitivity DNA Assay
Data Path: C:\...ents and Settings\Bioanalyzer\2012-02-22\2012-02-22_003.xad

Created: 2/22/2012 11:17:48 AM
Modified: 2/22/2012 12:00:00 PM

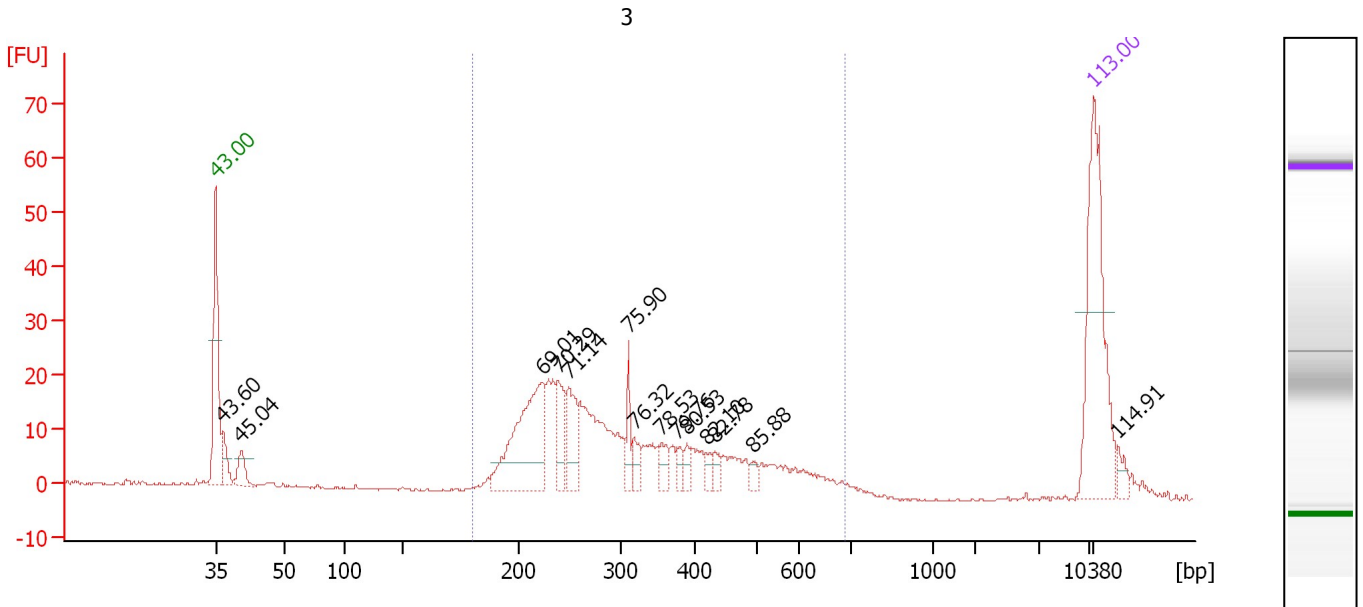
Electropherogram Summary Continued ...**... Region table for sample 2 : 2**

From [bp]	Molarity [pmol/l]	Average Size [bp]	Conc. [pg/μl]	To [bp]	Corr. Area	% of Total	Size distribution in CV [%]	Co lor
243	14,206.3	659	4,468.53	4,083	639.1	78	80.6	

Assay Class: High Sensitivity DNA Assay
 Data Path: C:\...ents and Settings\Bioanalyzer\2012-02-22\2012-02-22_003.xad

Created: 2/22/2012 11:17:48 AM
 Modified: 2/22/2012 12:00:00 PM

Electropherogram Summary Continued ...



Overall Results for sample 3 : 3

Number of peaks found: 14 Corr. Area 1: 347.7
 Noise: 0.2

Peak table for sample 3 : 3

Peak	Size [bp]	Conc. [pg/µl]	Molarity [pmol/l]	Observations
1	35	125.00	5,411.3	Lower Marker
2	37	19.98	826.7	
3	41	17.38	649.5	
4	223	104.42	708.1	
5	239	28.26	179.2	
6	249	31.05	188.7	
7	310	13.40	65.5	
8	317	10.42	49.8	
9	355	9.99	42.7	
10	376	6.19	25.0	
11	389	6.22	24.2	
12	419	5.22	18.9	
13	433	5.84	20.5	
14	496	4.83	14.7	
15	10,380	75.00	10.9	Upper Marker
16	24,509	0.00	0.0	

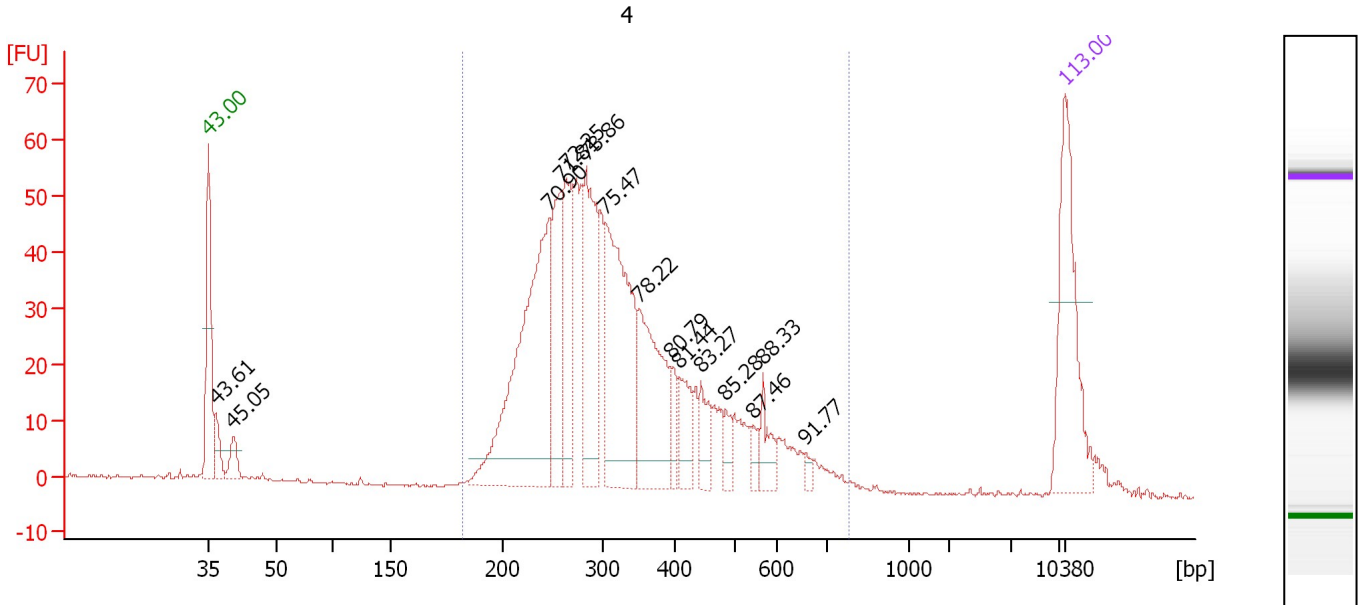
Region table for sample 3 : 3

From [bp]	Molarity [pmol/l]	Average Size [bp]	Conc. [pg/µl]	To [bp]	Corr. Area	% of Total	Size distribution in CV [%]	Color
181	2,268.2	322	416.67	688	347.7	91	36.4	Blue

Assay Class: High Sensitivity DNA Assay
 Data Path: C:\...ents and Settings\Bioanalyzer\2012-02-22\2012-02-22_003.xad

Created: 2/22/2012 11:17:48 AM
 Modified: 2/22/2012 12:00:00 PM

Electropherogram Summary Continued ...



Overall Results for sample 4 : 4

Number of peaks found: 15 Corr. Area 1: 967.3
 Noise: 0.3

Peak table for sample 4 : 4

Peak	Size [bp]	Conc. [pg/μl]	Molarity [pmol/l]	Observations
1	35	125.00	5,411.3	Lower Marker
2	37	23.74	981.4	
3	41	20.28	757.7	
4	246	261.86	1,610.9	
5	257	89.06	524.2	
6	263	80.05	461.7	
7	282	113.61	609.8	
8	303	174.98	876.0	
9	349	106.68	462.5	
10	393	16.38	63.1	
11	405	30.96	115.7	
12	443	23.27	79.6	
13	483	12.87	40.3	
14	541	8.66	24.3	
15	566	17.87	47.8	
16	656	4.55	10.5	
17	10,380	75.00	10.9	Upper Marker

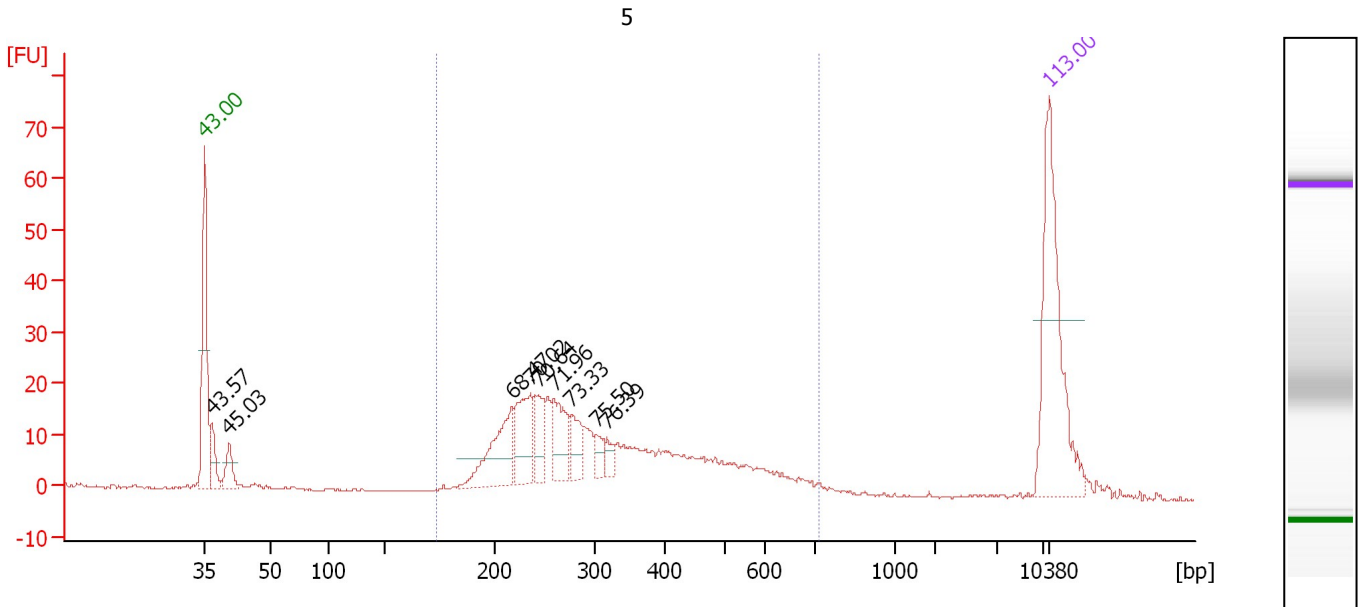
Region table for sample 4 : 4

From [bp]	Molarity [pmol/l]	Average Size [bp]	Conc. [pg/μl]	To [bp]	Corr. Area	% of Total	Size distribution in CV [%]	Color
183	5,804.0	335	1,137.32	777	967.3	95	33.8	Blue

Assay Class: High Sensitivity DNA Assay
 Data Path: C:\...ents and Settings\Bioanalyzer\2012-02-22\2012-02-22_003.xad

Created: 2/22/2012 11:17:48 AM
 Modified: 2/22/2012 12:00:00 PM

Electropherogram Summary Continued ...



Overall Results for sample 5 : 5

Number of peaks found: 9 Corr. Area 1: 371.9
 Noise: 0.2

Peak table for sample 5 : 5

Peak	Size [bp]	Conc. [pg/μl]	Molarity [pmol/l]	Observations
1	35	125.00	5,411.3	Lower Marker
2	37	20.63	855.2	
3	41	19.34	723.3	
4	217	54.68	382.1	
5	236	43.14	277.4	
6	243	24.71	153.9	
7	259	33.82	197.6	
8	276	19.34	106.2	
9	303	9.79	49.0	
10	318	7.13	34.0	
11	10,380	75.00	10.9	Upper Marker

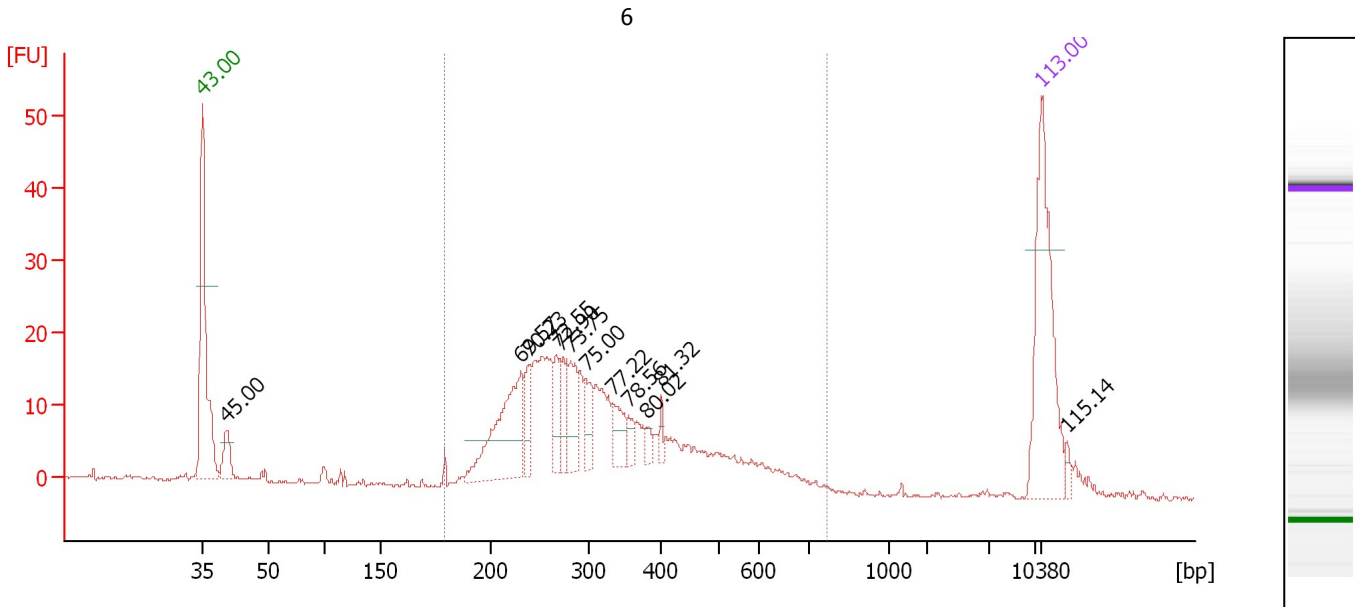
Region table for sample 5 : 5

From [bp]	Molarity [pmol/l]	Average Size [bp]	Conc. [pg/μl]	To [bp]	Corr. Area	% of Total	Size distribution in CV [%]	Color
173	2,096.2	335	395.09	716	371.9	87	37.7	Blue

Assay Class: High Sensitivity DNA Assay
 Data Path: C:\...ents and Settings\Bioanalyzer\2012-02-22\2012-02-22_003.xad

Created: 2/22/2012 11:17:48 AM
 Modified: 2/22/2012 12:00:00 PM

Electropherogram Summary Continued ...



Overall Results for sample 6 : 6

Number of peaks found: 12 Corr. Area 1: 344.2
 Noise: 0.2

Peak table for sample 6 : 6

Peak	Size [bp]	Conc. [pg/μl]	Molarity [pmol/l]	Observations
1	35	125.00	5,411.3	Lower Marker
2	40	22.99	861.8	
3	230	92.53	609.1	
4	238	23.38	148.7	
5	266	21.47	122.1	
6	271	22.36	125.2	
7	281	28.26	152.4	
8	296	17.52	89.7	
9	332	19.85	90.5	
10	355	8.21	35.0	
11	380	5.00	19.9	
12	403	5.72	21.5	
13	10,380	75.00	10.9	Upper Marker
14	26,160	0.00	0.0	

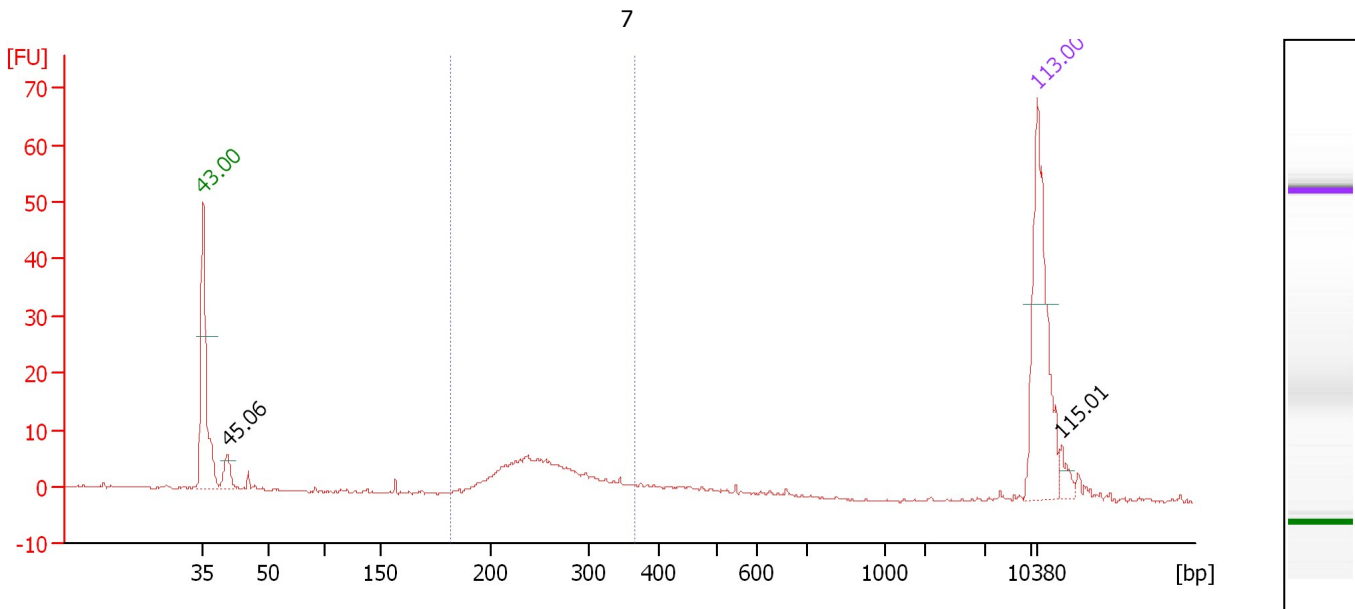
Region table for sample 6 : 6

From [bp]	Molarity [pmol/l]	Average Size [bp]	Conc. [pg/μl]	To [bp]	Corr. Area	% of Total	Size distribution in CV [%]	Color
179	2,803.8	331	537.57	772	344.2	91	35.1	Blue

Assay Class: High Sensitivity DNA Assay
 Data Path: C:\...ents and Settings\Bioanalyzer\2012-02-22\2012-02-22_003.xad

Created: 2/22/2012 11:17:48 AM
 Modified: 2/22/2012 12:00:00 PM

Electropherogram Summary Continued ...



Overall Results for sample 7 : 7

Number of peaks found: 2 Corr. Area 1: 72.1
 Noise: 0.2

Peak table for sample 7 : 7

Peak	Size [bp]	Conc. [pg/μl]	Molarity [pmol/l]	Observations
1	35	125.00	5,411.3	Lower Marker
2	41	17.59	656.7	
3	10,380	75.00	10.9	Upper Marker
4	25,250	0.00	0.0	

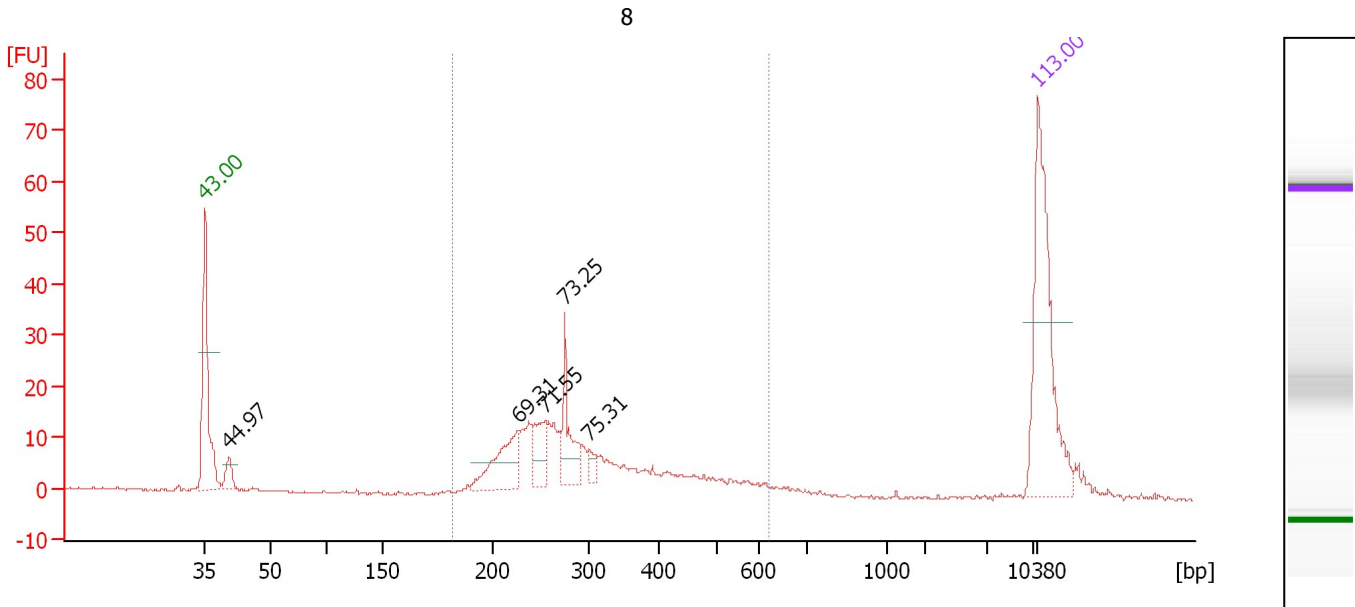
Region table for sample 7 : 7

From [bp]	Molarity [pmol/l]	Average Size [bp]	Conc. [pg/μl]	To [bp]	Corr. Area	% of Total	Size distribution in CV [%]	Color
182	634.5	259	105.81	366	72.1	64	16.1	Blue

Assay Class: High Sensitivity DNA Assay
 Data Path: C:\...ents and Settings\Bioanalyzer\2012-02-22\2012-02-22_003.xad

Created: 2/22/2012 11:17:48 AM
 Modified: 2/22/2012 12:00:00 PM

Electropherogram Summary Continued ...



Overall Results for sample 8 : 8

Number of peaks found: 5 Corr. Area 1: 234.4
 Noise: 0.2

Peak table for sample 8 : 8

Peak	Size [bp]	Conc. [pg/μl]	Molarity [pmol/l]	Observations
1	35	125.00	5,411.3	Lower Marker
2	40	14.56	546.7	
3	227	44.71	298.4	
4	254	22.13	131.9	
5	275	31.93	176.0	
6	300	7.17	36.2	
7	10,380	75.00	10.9	Upper Marker

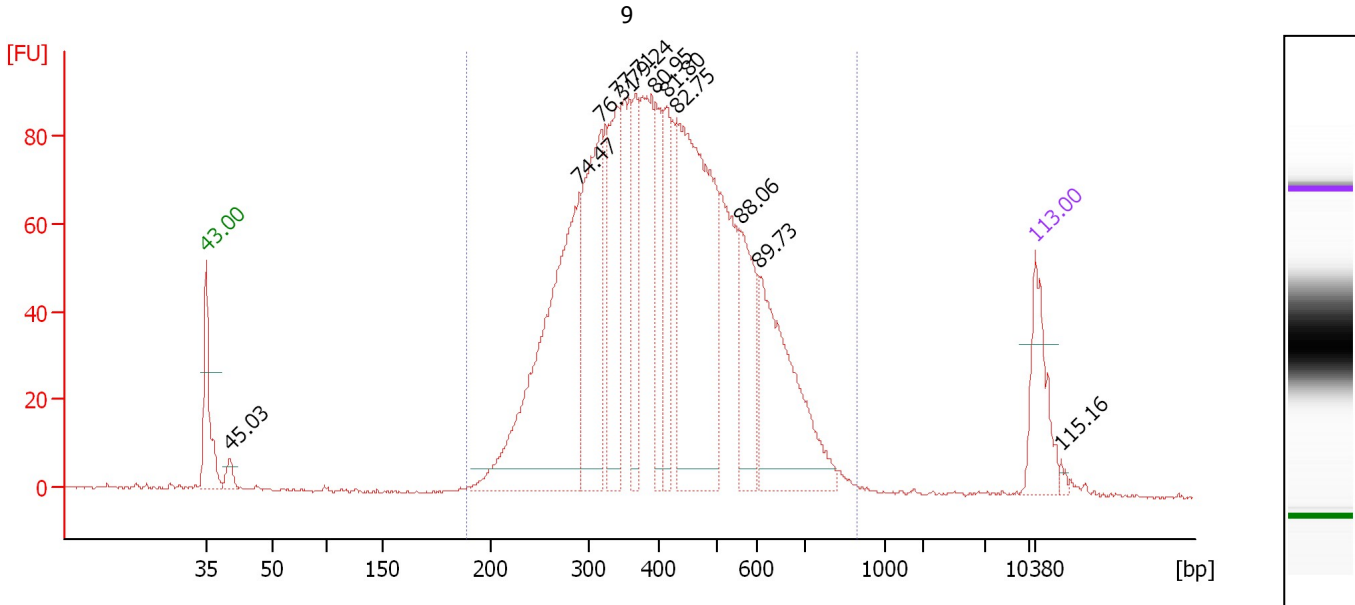
Region table for sample 8 : 8

From [bp]	Molarity [pmol/l]	Average Size [bp]	Conc. [pg/μl]	To [bp]	Corr. Area	% of Total	Size distribution in CV [%]	Color
182	1,415.2	310	259.89	622	234.4	86	31.8	Blue

Assay Class: High Sensitivity DNA Assay
 Data Path: C:\...ents and Settings\Bioanalyzer\2012-02-22\2012-02-22_003.xad

Created: 2/22/2012 11:17:48 AM
 Modified: 2/22/2012 12:00:00 PM

Electropherogram Summary Continued ...



Overall Results for sample 9 : 9

Number of peaks found: 11 Corr. Area 1: 2,030.7
 Noise: 0.3

Peak table for sample 9 : 9

Peak	Size [bp]	Conc. [pg/μl]	Molarity [pmol/l]	Observations
1	35	125.00	5,411.3	Lower Marker
2	40	24.83	929.0	
3	290	599.80	3,137.4	
4	317	294.41	1,407.4	
5	341	194.90	866.6	
6	367	113.24	467.7	
7	396	104.34	399.2	
8	413	123.38	453.0	
9	432	509.75	1,788.1	
10	559	136.17	369.4	
11	606	253.50	633.4	
12	10,380	75.00	10.9	Upper Marker
13	26,343	0.00	0.0	

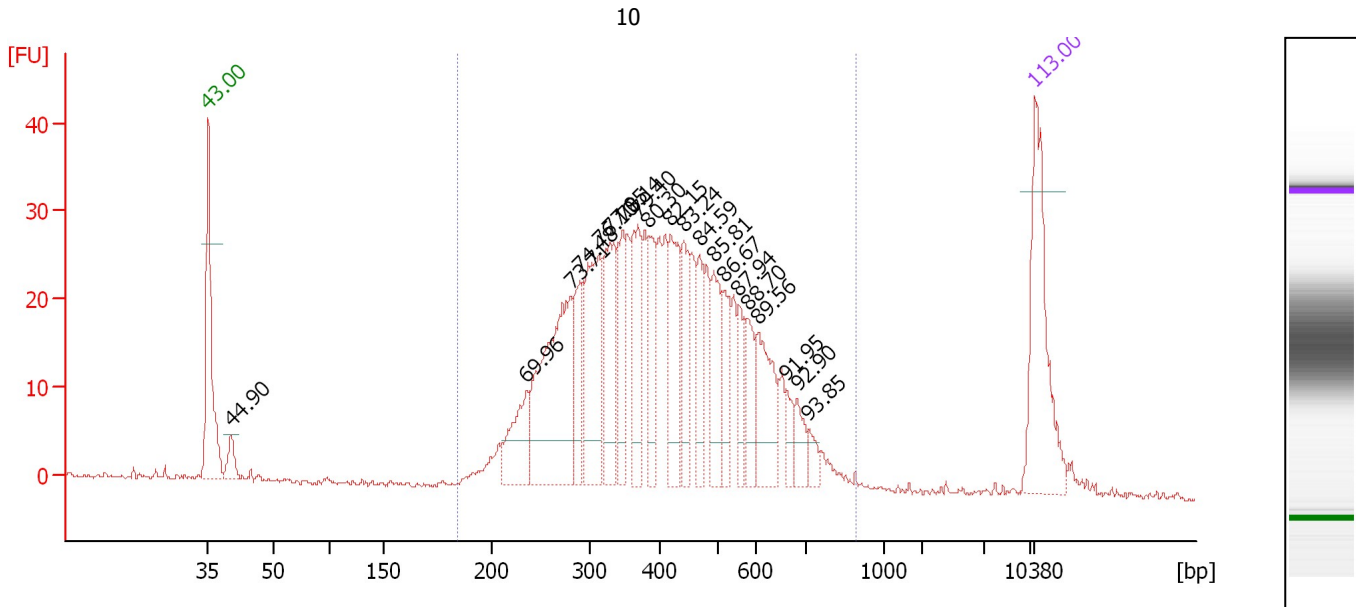
Region table for sample 9 : 9

From [bp]	Molarity [pmol/l]	Average Size [bp]	Conc. [pg/μl]	To [bp]	Corr. Area	% of Total	Size distribution in CV [%]	Color
188	12,846.5	421	3,145.16	898	2,030.7	98	30.6	Blue

Assay Class: High Sensitivity DNA Assay
 Data Path: C:\...ents and Settings\Bioanalyzer\2012-02-22\2012-02-22_003.xad

Created: 2/22/2012 11:17:48 AM
 Modified: 2/22/2012 12:00:00 PM

Electropherogram Summary Continued ...



Overall Results for sample 10 : 10

Number of peaks found: 20 Corr. Area 1: 699.4
 Noise: 0.3

Peak table for sample 10 : 10

Peak	Size [bp]	Conc. [pg/μl]	Molarity [pmol/l]	Observations
1	35	125.00	5,411.3	Lower Marker
2	40	19.92	751.9	
3	235	52.56	339.0	
4	280	169.25	914.3	
5	290	46.82	244.8	
6	313	99.03	478.8	
7	330	72.88	335.0	
8	348	45.77	199.3	
9	370	59.81	245.2	
10	385	39.76	156.5	
11	420	59.23	213.8	
12	442	41.44	142.1	
13	470	33.43	107.9	
14	494	45.35	139.0	
15	517	31.35	91.8	
16	555	22.11	60.4	
17	578	27.37	71.8	
18	602	52.13	131.1	
19	660	13.11	30.1	
20	683	15.46	34.3	
21	711	9.84	21.0	
22	10,380	75.00	10.9	Upper Marker

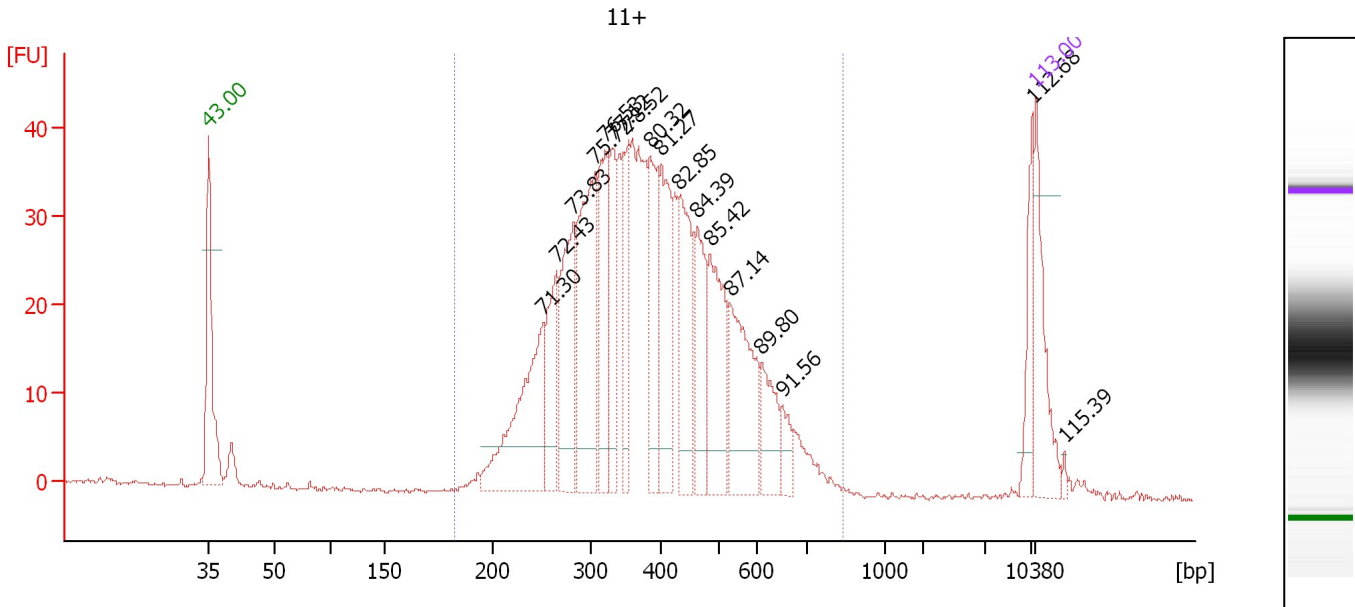
Region table for sample 10 : 10

From [bp]	Molarity [pmol/l]	Average Size [bp]	Conc. [pg/μl]	To [bp]	Corr. Area	% of Total	Size distribution in CV [%]	Color
184	5,260.8	418	1,261.05	895	699.4	96	32.1	Blue

Assay Class: High Sensitivity DNA Assay
 Data Path: C:\...ents and Settings\Bioanalyzer\2012-02-22\2012-02-22_003.xad

Created: 2/22/2012 11:17:48 AM
 Modified: 2/22/2012 12:00:00 PM

Electropherogram Summary Continued ...



Overall Results for sample 11 : 11+

Number of peaks found: 17 Corr. Area 1: 820.1
 Noise: 0.2

Peak table for sample 11 : 11+

Peak	Size [bp]	Conc. [pg/μl]	Molarity [pmol/l]	Observations
1	35	125.00	5,411.3	Lower Marker
2	251	213.48	1,287.7	
3	265	104.69	598.8	
4	282	164.17	882.4	
5	307	241.50	1,192.3	
6	321	132.22	624.6	
7	331	92.33	423.0	
8	355	89.24	381.3	
9	385	109.28	429.6	
10	402	138.44	522.0	
11	434	130.92	457.0	
12	465	89.87	292.7	
13	486	129.38	403.0	
14	531	136.29	388.8	
15	608	57.66	143.6	
16	651	26.29	61.2	
17	8,046	43.76	8.2	
18	10,380	75.00	10.9	Upper Marker
19	28,051	0.00	0.0	

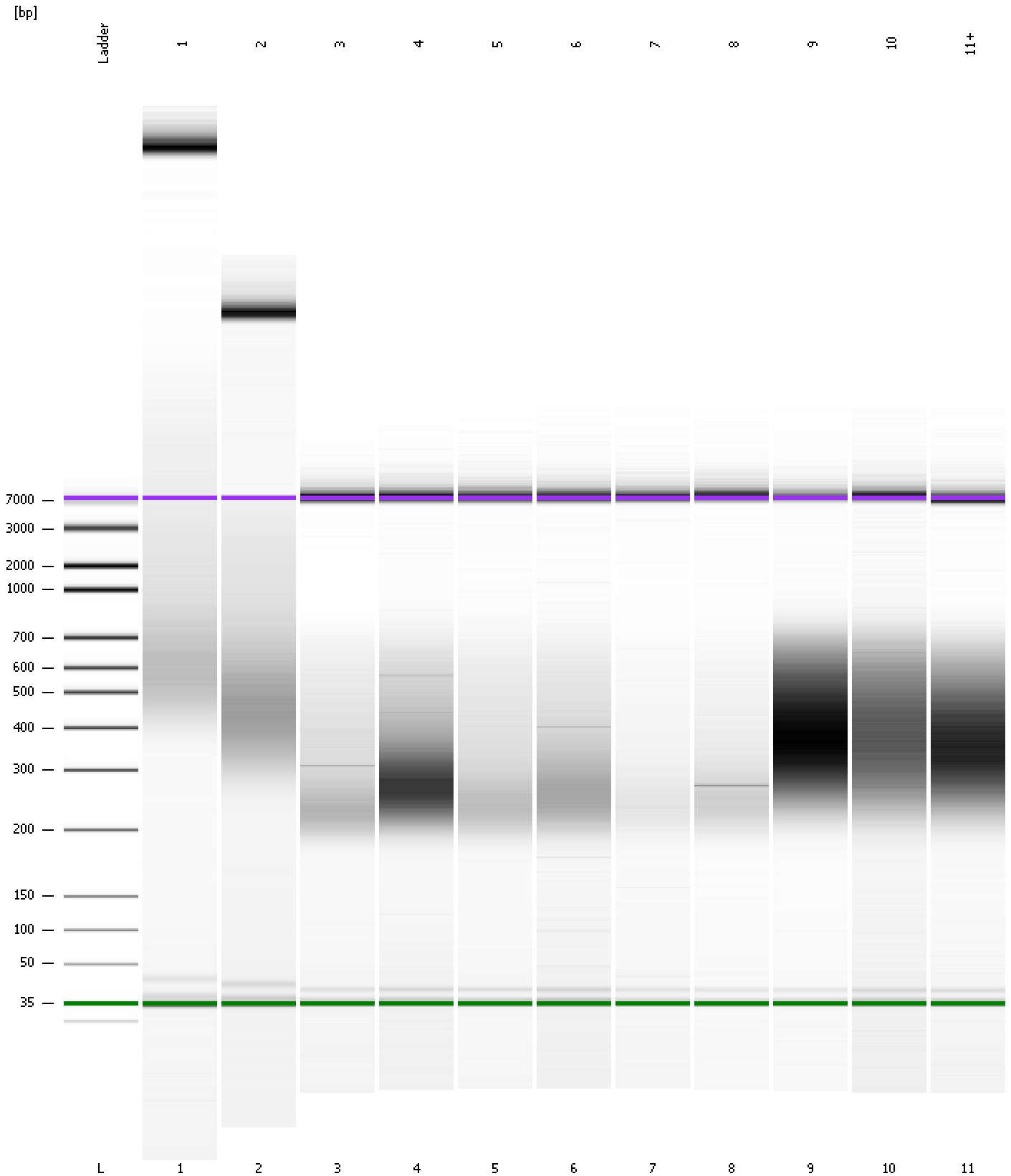
Region table for sample 11 : 11+

From [bp]	Molarity [pmol/l]	Average Size [bp]	Conc. [pg/μl]	To [bp]	Corr. Area	% of Total	Size distribution in CV [%]	Color
182	9,884.8	394	2,289.58	842	820.1	96	29.8	Blue

Assay Class: High Sensitivity DNA Assay
Data Path: C:\...ents and Settings\Bioanalyzer\2012-02-22\2012-02-22_003.xad

Created: 2/22/2012 11:17:48 AM
Modified: 2/22/2012 12:00:00 PM

Gel Image



Assay Class: High Sensitivity DNA Assay
 Data Path: C:\...ents and Settings\Bioanalyzer\2012-02-22\2012-02-22_003.xad

Created: 2/22/2012 11:17:48 AM
 Modified: 2/22/2012 12:00:00 PM

Run Logbook

Description	Number	Source	Category	Sub Category	Time	Time Zone	User	Host
Run ended on port 1 (Number of wells acquired: 12)		Instrument	Run		2/22/2012 11:59:05 AM	(GMT --08:00) Pacific Standard Time	UC Davis	D8XSMGH1
Run started on port 1 (File: C:\Documents and Settings\Bioanalyzer\2012-02-22\2012-02-22_003.xad)		Instrument	Run		2/22/2012 11:17:50 AM	(GMT --08:00) Pacific Standard Time	UC Davis	D8XSMGH1
Product Number : G2938B		Instrument	Run		2/22/2012 11:17:50 AM	(GMT --08:00) Pacific Standard Time	UC Davis	D8XSMGH1
Name :		Instrument	Run		2/22/2012 11:17:50 AM	(GMT --08:00) Pacific Standard Time	UC Davis	D8XSMGH1
Vendor : Agilent Technologies		Instrument	Run		2/22/2012 11:17:50 AM	(GMT --08:00) Pacific Standard Time	UC Davis	D8XSMGH1
Serial# : DE13701086		Instrument	Run		2/22/2012 11:17:50 AM	(GMT --08:00) Pacific Standard Time	UC Davis	D8XSMGH1
Firmware : C.01.069		Instrument	Run		2/22/2012 11:17:50 AM	(GMT --08:00) Pacific Standard Time	UC Davis	D8XSMGH1
Cartridge : Electrode		Instrument	Run		2/22/2012 11:17:50 AM	(GMT --08:00) Pacific Standard Time	UC Davis	D8XSMGH1