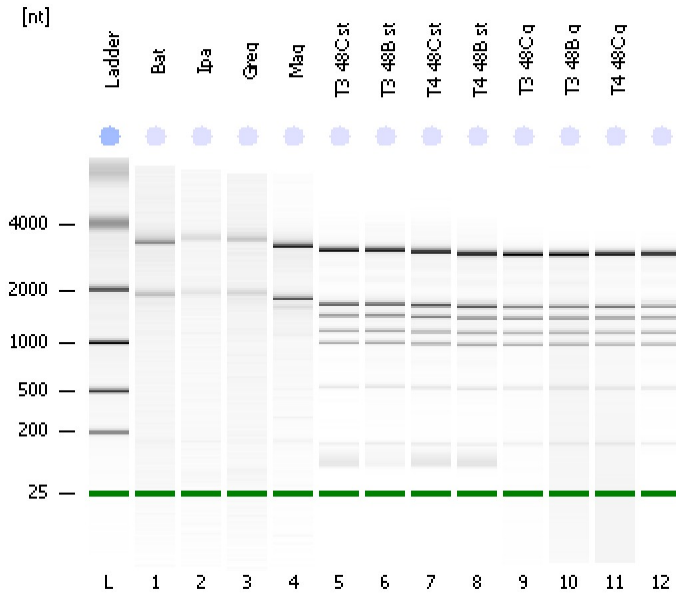


Assay Class: Plant RNA Nano
Data Path: C:\...ents and Settings\Bioanalyzer\2012-02-22\2012-02-22_006.xad

Created: 2/22/2012 3:44:55 PM
Modified: 2/22/2012 4:33:53 PM

Electrophoresis File Run Summary



Instrument Information:

Instrument Name: DE13701086 Firmware: C.01.069
Serial#: DE13701086 Type: G2938B

Assay Information:

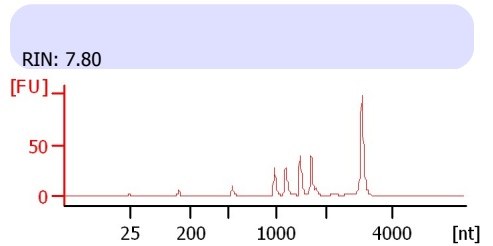
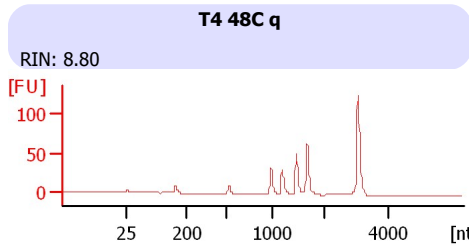
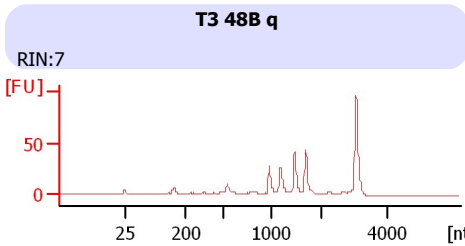
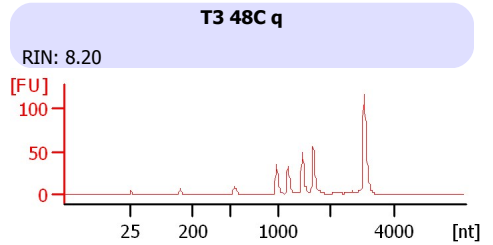
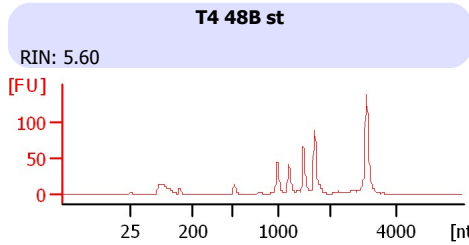
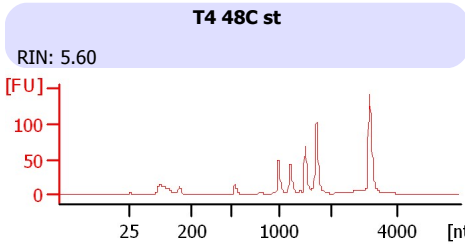
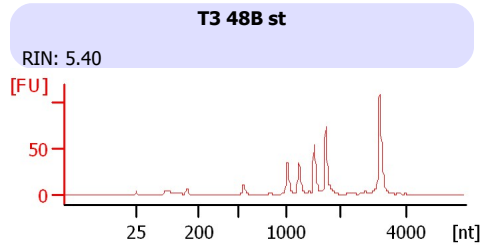
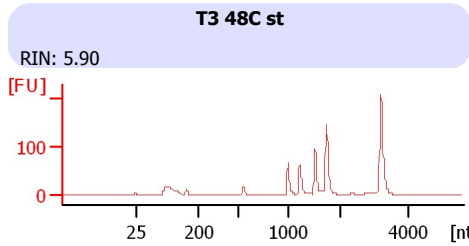
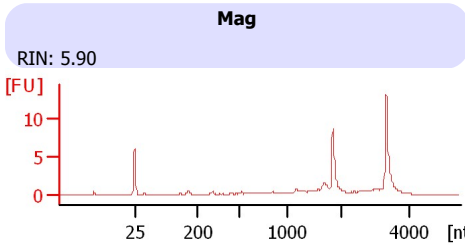
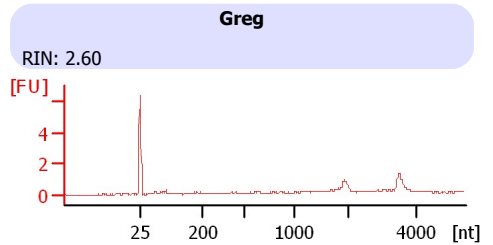
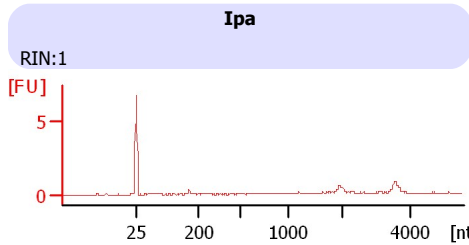
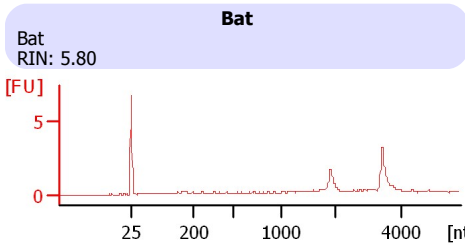
Assay Origin Path: C:\Program Files\Agilent\2100 bioanalyzer\2100 expert\assays\RNA\Plant RNA Nano.xsy

Assay Class: Plant RNA Nano
Version: 1.3
Assay Comments: Total RNA Analysis ng sensitivity (Plant)

© Copyright 2003 - 2009 Agilent Technologies, Inc.

Chip Information:

Chip Lot #:
Reagent Kit Lot #:
Chip Comments:



Assay Class: Plant RNA Nano
Data Path: C:\...ents and Settings\Bioanalyzer\2012-02-22\2012-02-22_006.xad

Created: 2/22/2012 3:44:55 PM
Modified: 2/22/2012 4:33:53 PM

Electrophoresis File Run Summary (Chip Summary)

Sample Name	Sample Comment	Status	Result Label	Result Color
Bat	Bat	✓	RIN: 5.80	
Ipa		✓	RIN:1	
Greg		✓	RIN: 2.60	
Mag		✓	RIN: 5.90	
T3 48C st		✓	RIN: 5.90	
T3 48B st		✓	RIN: 5.40	
T4 48C st		✓	RIN: 5.60	
T4 48B st		✓	RIN: 5.60	
T3 48C q		✓	RIN: 8.20	
T3 48B q		✓	RIN:7	
T4 48C q		✓	RIN: 8.80	
Ladder		✓	RIN: 7.80	
		✓	All Other Samples	

Chip Lot #

Reagent Kit Lot #

Chip Comments :

Assay Class: Plant RNA Nano
Data Path: C:\...ents and Settings\Bioanalyzer\2012-02-22\2012-02-22_006.xad

Created: 2/22/2012 3:44:55 PM
Modified: 2/22/2012 4:33:53 PM

Electrophoresis Assay Details

General Analysis Settings

Number of Available Sample and Ladder Wells (Max.) : 13
Minimum Visible Range [s] : 17
Maximum Visible Range [s] : 70
Start Analysis Time Range [s] : 19
End Analysis Time Range [s] : 69
Ladder Concentration [ng/μl] : 150
Lower Marker Concentration [ng/μl] : 0
Upper Marker Concentration [ng/μl] : 0
Used Lower Marker for Quantitation
Standard Curve Fit is Logarithmic
Show Data Aligned to Lower Marker

Integrator Settings

Integration Start Time [s] : 19
Integration End Time [s] : 69
Slope Threshold : 0.6
Height Threshold [FU] : 0.2
Area Threshold : 0.1
Width Threshold [s] : 0.2
Baseline Plateau [s] : 6

Filter Settings

Filter Width [s] : 0.5
Polynomial Order : 4

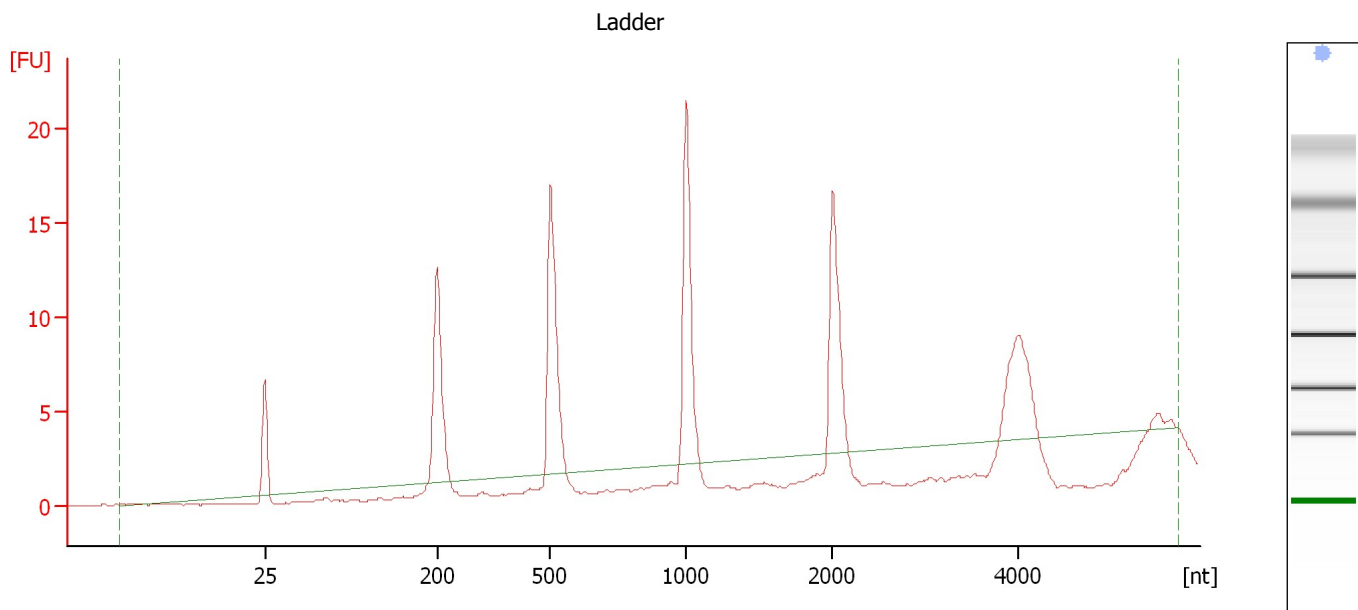
Ladder

Ladder Peak	Size
1	25
2	200
3	500
4	1000
5	2000
6	4000

Assay Class: Plant RNA Nano
Data Path: C:\...ents and Settings\Bioanalyzer\2012-02-22\2012-02-22_006.xad

Created: 2/22/2012 3:44:55 PM
Modified: 2/22/2012 4:33:53 PM

Electropherogram Summary



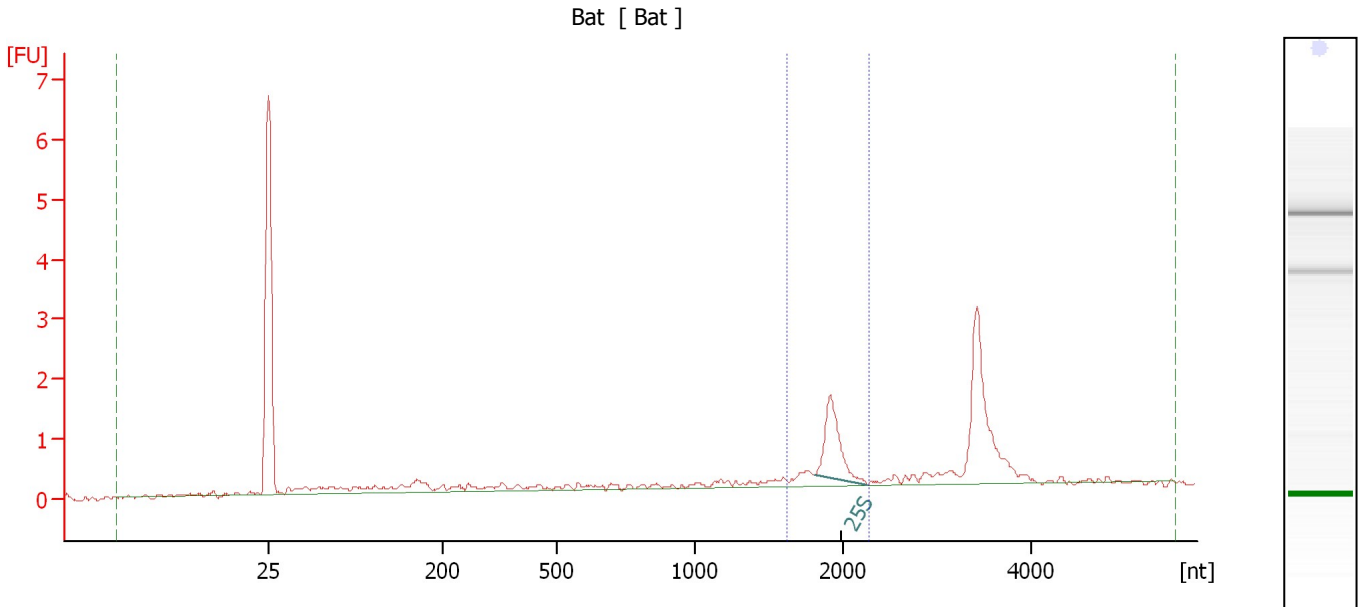
Overall Results for Ladder

RNA Area:	73.1	Result Flagging Color:	
RNA Concentration:	150 ng/ μ l	Result Flagging Label:	All Other Samples

Assay Class: Plant RNA Nano
 Data Path: C:\...ents and Settings\Bioanalyzer\2012-02-22\2012-02-22_006.xad

Created: 2/22/2012 3:44:55 PM
 Modified: 2/22/2012 4:33:53 PM

Electropherogram Summary Continued ...



Overall Results for sample 1 : Bat

RNA Area:	14.9	Result Flagging Color:	
RNA Concentration:	31 ng/μl	Result Flagging Label:	RIN: 5.80
rRNA Ratio [25s / 18s]:	0.0	Corr. Area 1:	3.1
RNA Integrity Number (RIN):	5.8 (B.02.08)		

Fragment table for sample 1 : Bat

Name	Start Size [nt]	End Size [nt]	Area	% of total Area
25S	1,811	2,260	2.1	14.2

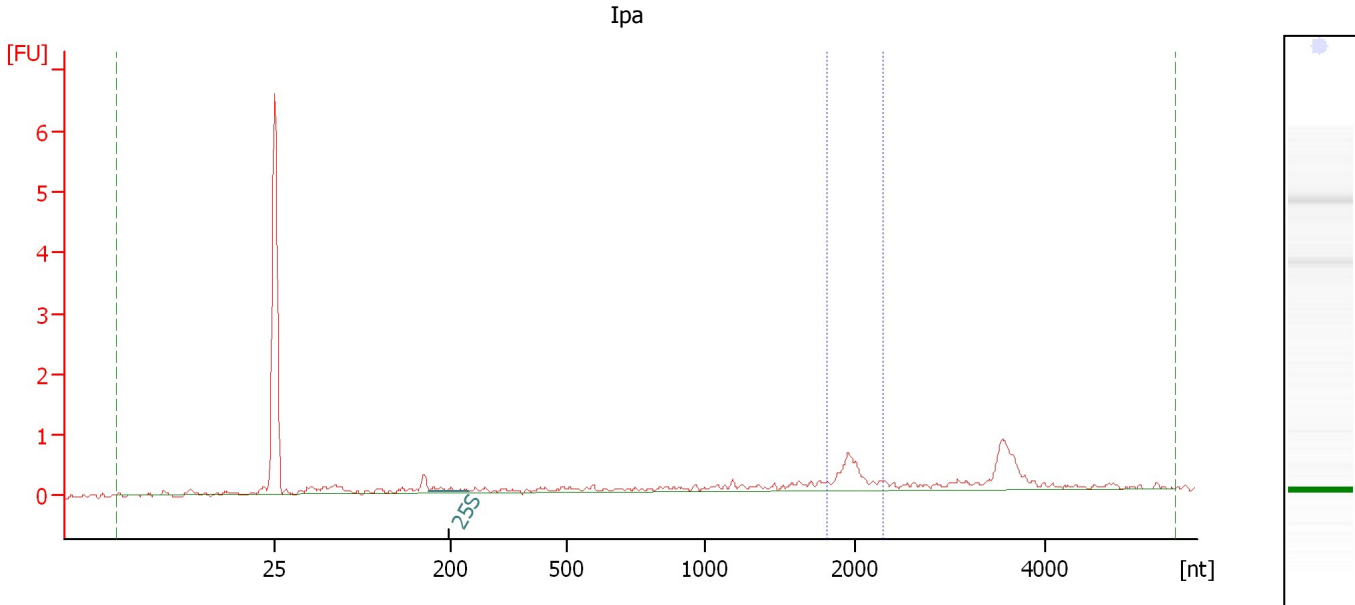
Region table for sample 1 : Bat

Name	From [nt]	To [nt]	Corr. Area	% of Total	Color
Region 1	1,631	2,287	3.1	21	

Assay Class: Plant RNA Nano
 Data Path: C:\...ents and Settings\Bioanalyzer\2012-02-22\2012-02-22_006.xad

Created: 2/22/2012 3:44:55 PM
 Modified: 2/22/2012 4:33:53 PM

Electropherogram Summary Continued ...



Overall Results for sample 2 : Ipa

RNA Area:	7.5	Result Flagging Color:	
RNA Concentration:	15 ng/μl	Result Flagging Label:	RIN:1
rRNA Ratio [25s / 18s]:	0.0	Corr. Area 1:	1.3
RNA Integrity Number (RIN):	1 (B.02.08)		

Fragment table for sample 2 : Ipa

Name	Start Size [nt]	End Size [nt]	Area	% of total Area
25S	243	178	0.0	0.0

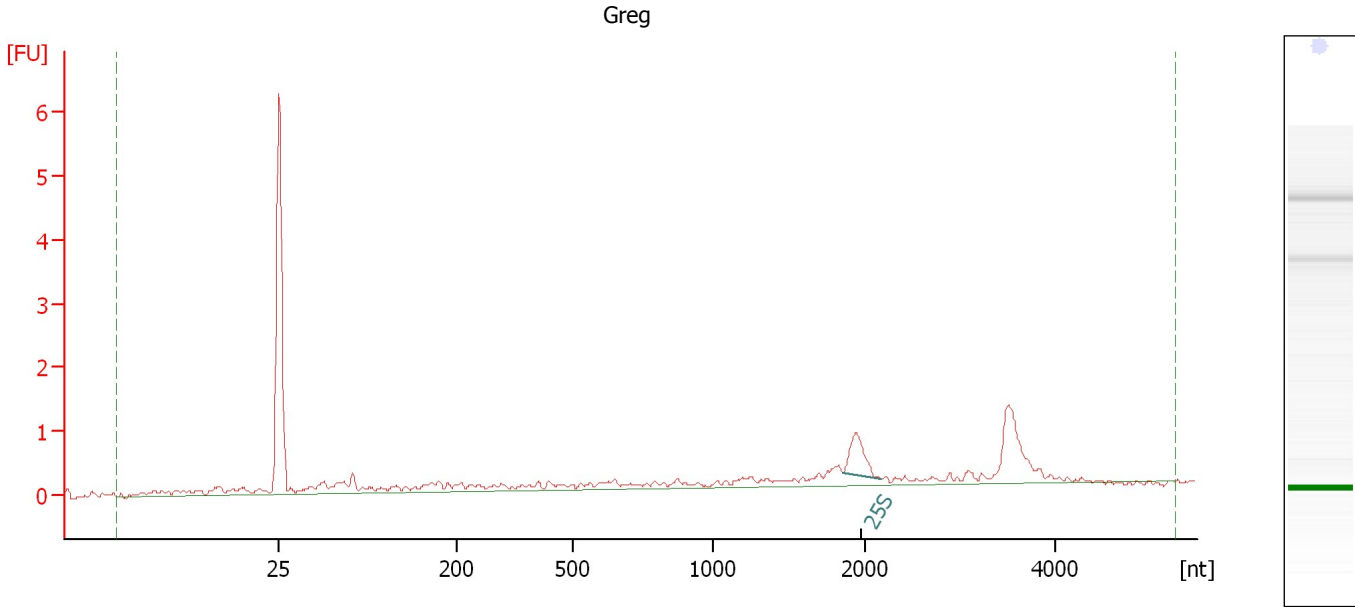
Region table for sample 2 : Ipa

Name	From [nt]	To [nt]	Corr. Area	% of Total	Color
Region 1	1,809	2,297	1.3	17	

Assay Class: Plant RNA Nano
Data Path: C:\...ents and Settings\Bioanalyzer\2012-02-22\2012-02-22_006.xad

Created: 2/22/2012 3:44:55 PM
Modified: 2/22/2012 4:33:53 PM

Electropherogram Summary Continued ...



Overall Results for sample 3 : Greg

RNA Area:	12.5	RNA Integrity Number (RIN):	2.6 (B.02.08)
RNA Concentration:	26 ng/μl	Result Flagging Color:	
rRNA Ratio [25s / 18s]:	0.0	Result Flagging Label:	RIN: 2.60

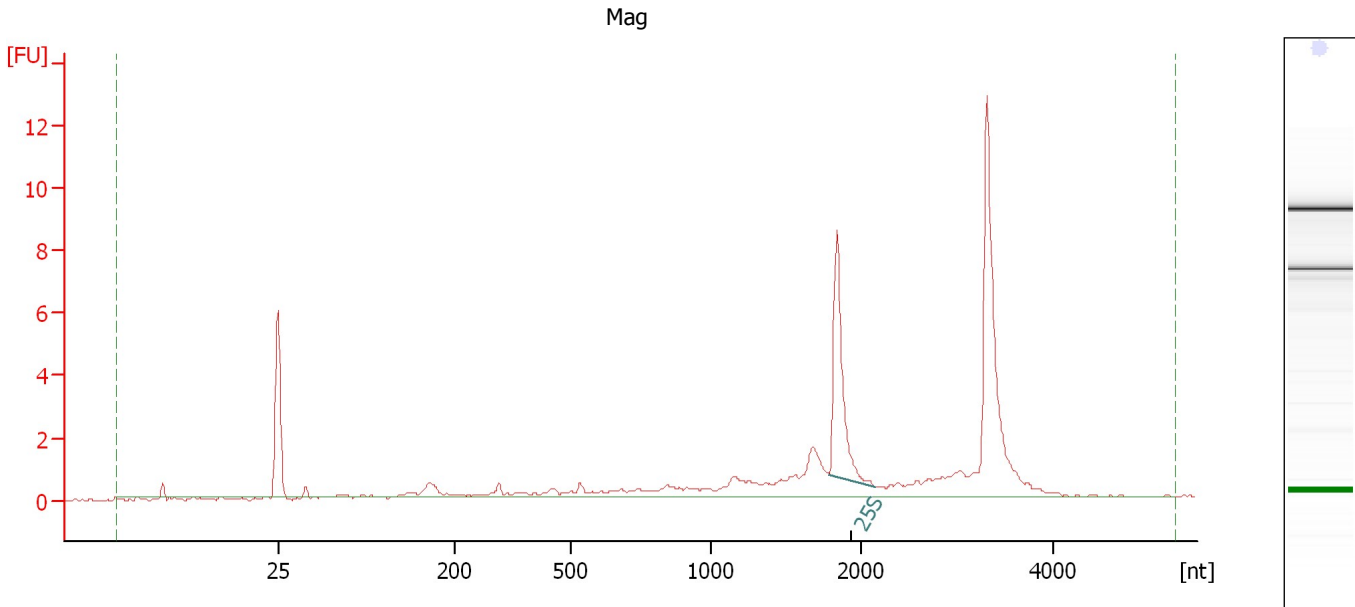
Fragment table for sample 3 : Greg

Name	Start Size [nt]	End Size [nt]	Area	% of total Area
25S	1,864	2,176	0.9	7.3

Assay Class: Plant RNA Nano
Data Path: C:\...ents and Settings\Bioanalyzer\2012-02-22\2012-02-22_006.xad

Created: 2/22/2012 3:44:55 PM
Modified: 2/22/2012 4:33:53 PM

Electropherogram Summary Continued ...



Overall Results for sample 4 : Mag

RNA Area: 40.7 RNA Integrity Number (RIN): 5.9 (B.02.08)
RNA Concentration: 83 ng/μl Result Flagging Color:
rRNA Ratio [25s / 18s]: 0.0 Result Flagging Label: RIN: 5.90

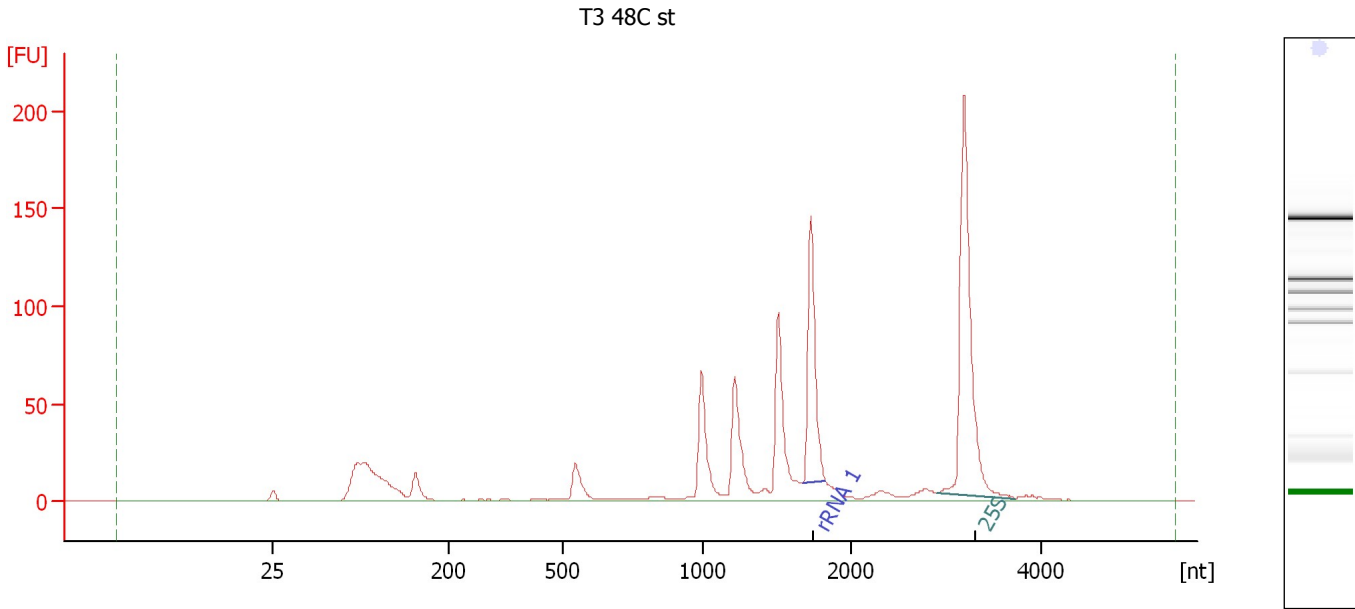
Fragment table for sample 4 : Mag

Name	Start Size [nt]	End Size [nt]	Area	% of total Area
25S	1,786	2,143	6.7	16.5

Assay Class: Plant RNA Nano
Data Path: C:\...ents and Settings\Bioanalyzer\2012-02-22\2012-02-22_006.xad

Created: 2/22/2012 3:44:55 PM
Modified: 2/22/2012 4:33:53 PM

Electropherogram Summary Continued ...



Overall Results for sample 5 : T3 48C st

RNA Area:	785.5	RNA Integrity Number (RIN):	5.9 (B.02.08)
RNA Concentration:	1,611 ng/μl	Result Flagging Color:	
rRNA Ratio [25s / 18s]:	0.0	Result Flagging Label:	RIN: 5.90

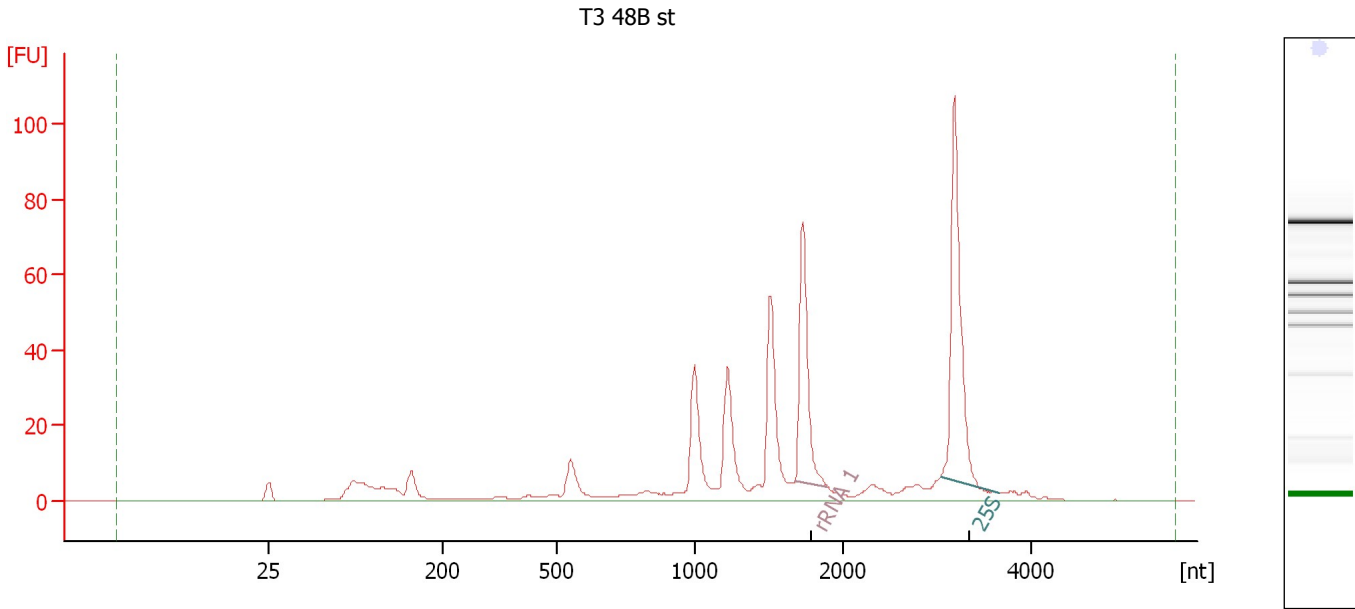
Fragment table for sample 5 : T3 48C st

Name	Start Size [nt]	End Size [nt]	Area	% of total Area
rRNA 1	1,677	1,827	105.5	13.4
25S	2,912	3,736	188.4	24.0

Assay Class: Plant RNA Nano
Data Path: C:\...ents and Settings\Bioanalyzer\2012-02-22\2012-02-22_006.xad

Created: 2/22/2012 3:44:55 PM
Modified: 2/22/2012 4:33:53 PM

Electropherogram Summary Continued ...



Overall Results for sample 6 : T3 48B st

RNA Area:	439.6	RNA Integrity Number (RIN):	5.4 (B.02.08)
RNA Concentration:	901 ng/μl	Result Flagging Color:	
rRNA Ratio [25s / 18s]:	0.0	Result Flagging Label:	RIN: 5.40

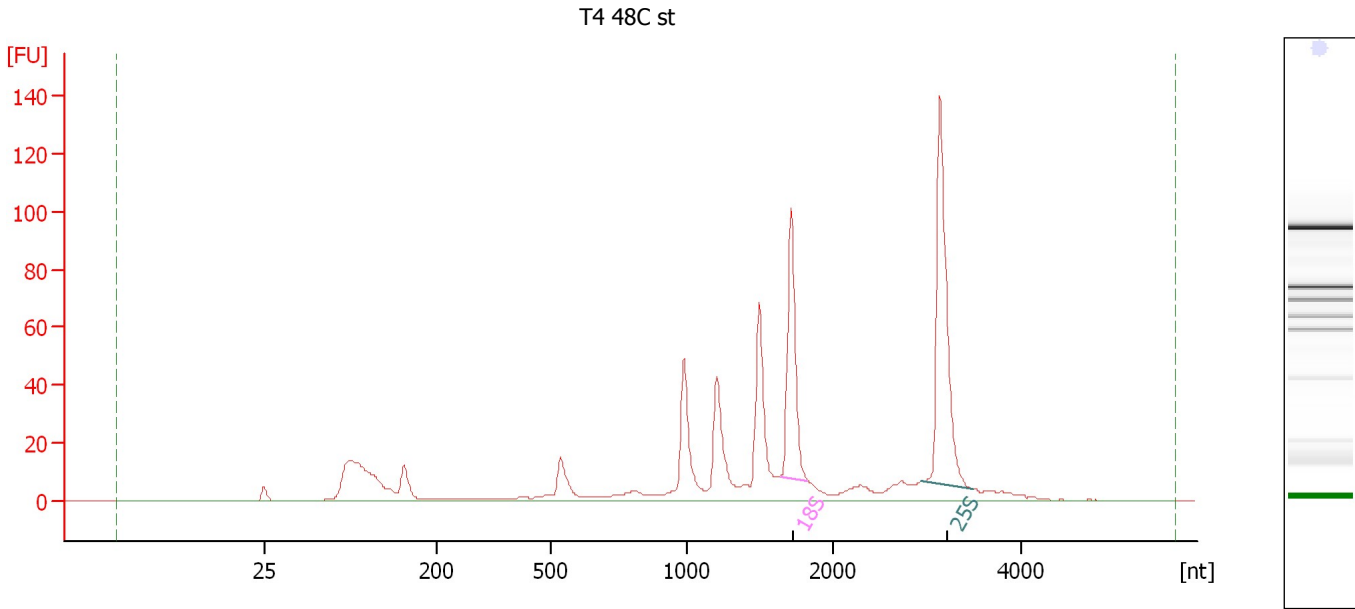
Fragment table for sample 6 : T3 48B st

Name	Start Size [nt]	End Size [nt]	Area	% of total Area
rRNA 1	1,677	1,898	56.3	12.8
25S	3,052	3,669	86.2	19.6

Assay Class: Plant RNA Nano
Data Path: C:\...ents and Settings\Bioanalyzer\2012-02-22\2012-02-22_006.xad

Created: 2/22/2012 3:44:55 PM
Modified: 2/22/2012 4:33:53 PM

Electropherogram Summary Continued ...



Overall Results for sample 7 : T4 48C st

RNA Area: 623.9 RNA Integrity Number (RIN): 5.6 (B.02.08)
RNA Concentration: 1,279 ng/μl Result Flagging Color:
rRNA Ratio [25s / 18s]: 0.0 Result Flagging Label: RIN: 5.60

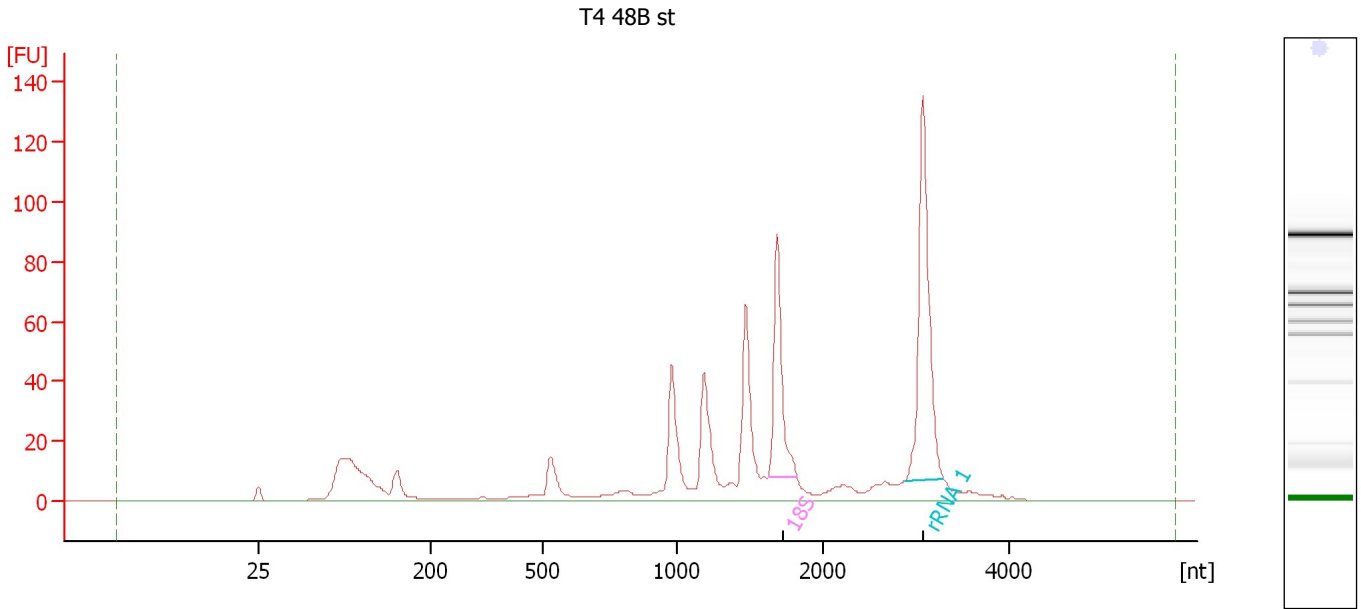
Fragment table for sample 7 : T4 48C st

Name	Start Size [nt]	End Size [nt]	Area	% of total Area
18S	1,636	1,817	75.1	12.0
25S	2,934	3,480	122.2	19.6

Assay Class: Plant RNA Nano
Data Path: C:\...ents and Settings\Bioanalyzer\2012-02-22\2012-02-22_006.xad

Created: 2/22/2012 3:44:55 PM
Modified: 2/22/2012 4:33:53 PM

Electropherogram Summary Continued ...



Overall Results for sample 8 : T4 48B st

RNA Area:	630.5	RNA Integrity Number (RIN):	5.6 (B.02.08)
RNA Concentration:	1,293 ng/μl	Result Flagging Color:	
rRNA Ratio [25s / 18s]:	0.0	Result Flagging Label:	RIN: 5.60

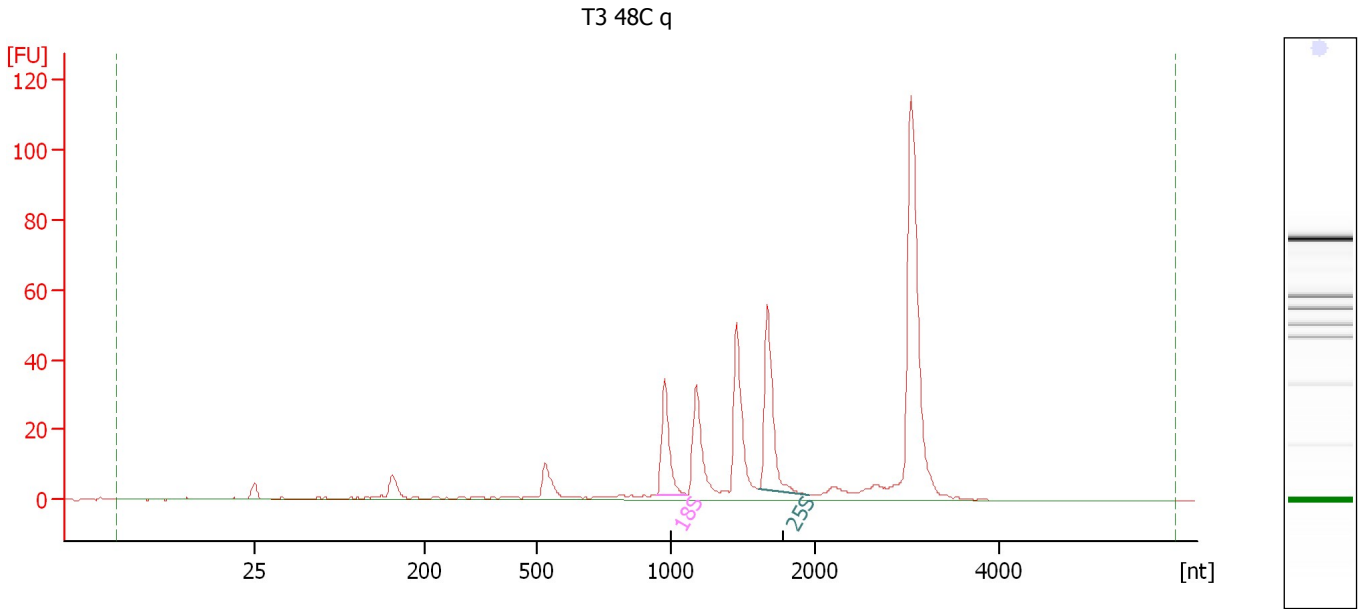
Fragment table for sample 8 : T4 48B st

Name	Start Size [nt]	End Size [nt]	Area	% of total Area
18S	1,623	1,819	69.8	11.1
rRNA 1	2,883	3,301	123.0	19.5

Assay Class: Plant RNA Nano
Data Path: C:\...ents and Settings\Bioanalyzer\2012-02-22\2012-02-22_006.xad

Created: 2/22/2012 3:44:55 PM
Modified: 2/22/2012 4:33:53 PM

Electropherogram Summary Continued ...



Overall Results for sample 9 : T3 48C q

RNA Area: 375.9 RNA Integrity Number (RIN): 8.2 (B.02.08)
RNA Concentration: 771 ng/μl Result Flagging Color:
rRNA Ratio [25s / 18s]: 1.5 Result Flagging Label: RIN: 8.20

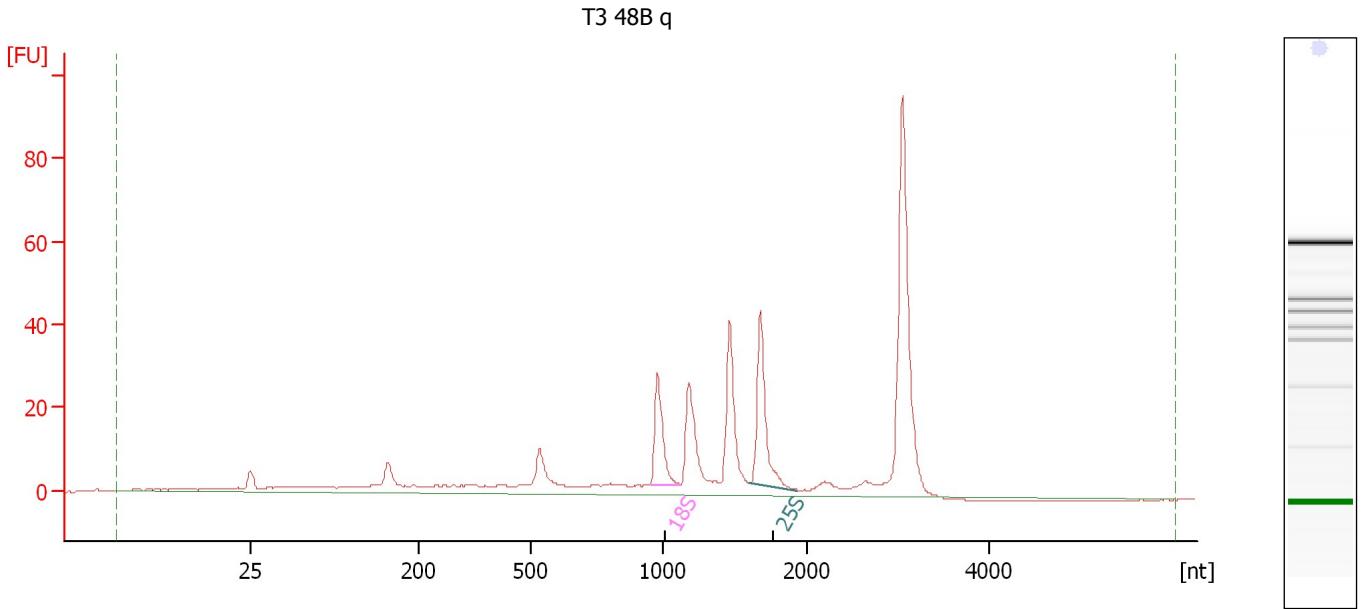
Fragment table for sample 9 : T3 48C q

Name	Start Size [nt]	End Size [nt]	Area	% of total Area
18S	949	1,120	30.0	8.0
25S	1,608	1,963	46.3	12.3

Assay Class: Plant RNA Nano
Data Path: C:\...ents and Settings\Bioanalyzer\2012-02-22\2012-02-22_006.xad

Created: 2/22/2012 3:44:55 PM
Modified: 2/22/2012 4:33:53 PM

Electropherogram Summary Continued ...



Overall Results for sample 10 : T3 48B q

RNA Area: 399.5 RNA Integrity Number (RIN): 7 (B.02.08)
RNA Concentration: 819 ng/μl Result Flagging Color:
rRNA Ratio [25s / 18s]: 1.5 Result Flagging Label: RIN:7

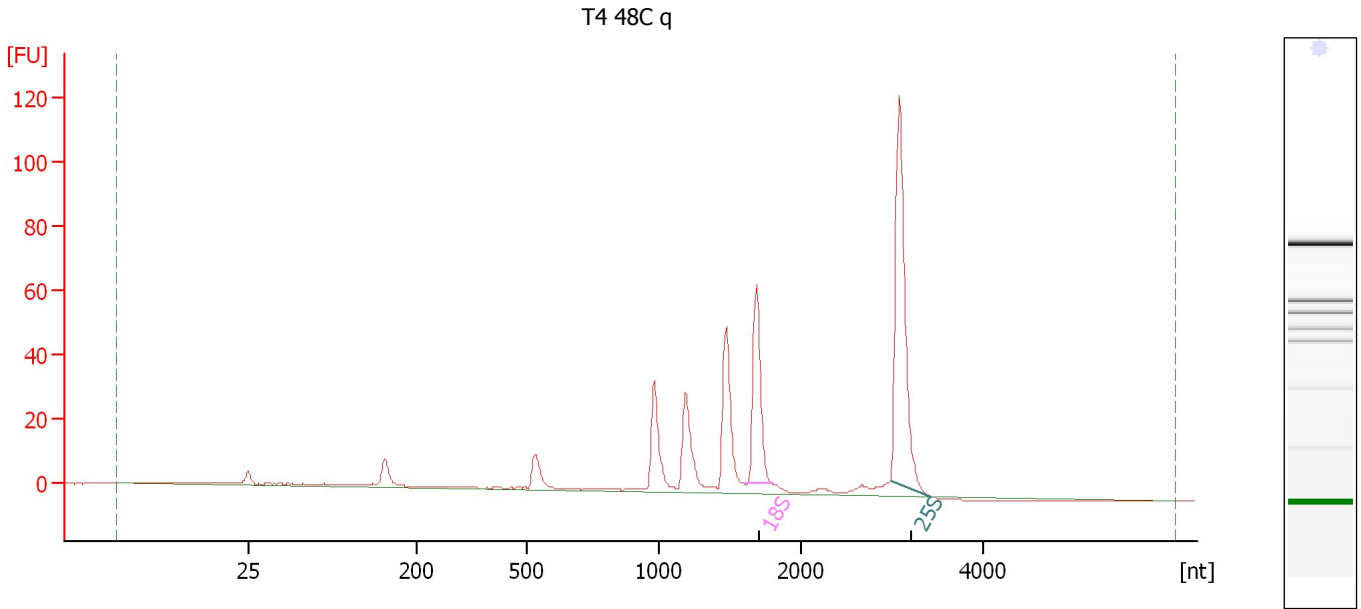
Fragment table for sample 10 : T3 48B q

Name	Start Size [nt]	End Size [nt]	Area	% of total Area
18S	952	1,121	25.1	6.3
25S	1,598	1,941	38.5	9.6

Assay Class: Plant RNA Nano
 Data Path: C:\...ents and Settings\Bioanalyzer\2012-02-22\2012-02-22_006.xad

Created: 2/22/2012 3:44:55 PM
 Modified: 2/22/2012 4:33:53 PM

Electropherogram Summary Continued ...



Overall Results for sample 11 : T4 48C q

RNA Area:	365.9	RNA Integrity Number (RIN):	8.8 (B.02.08, Anomaly Threshold(s) manually adapted)
RNA Concentration:	750 ng/μl	Result Flagging Color:	
rRNA Ratio [25s / 18s]:	0.0	Result Flagging Label:	RIN: 8.80

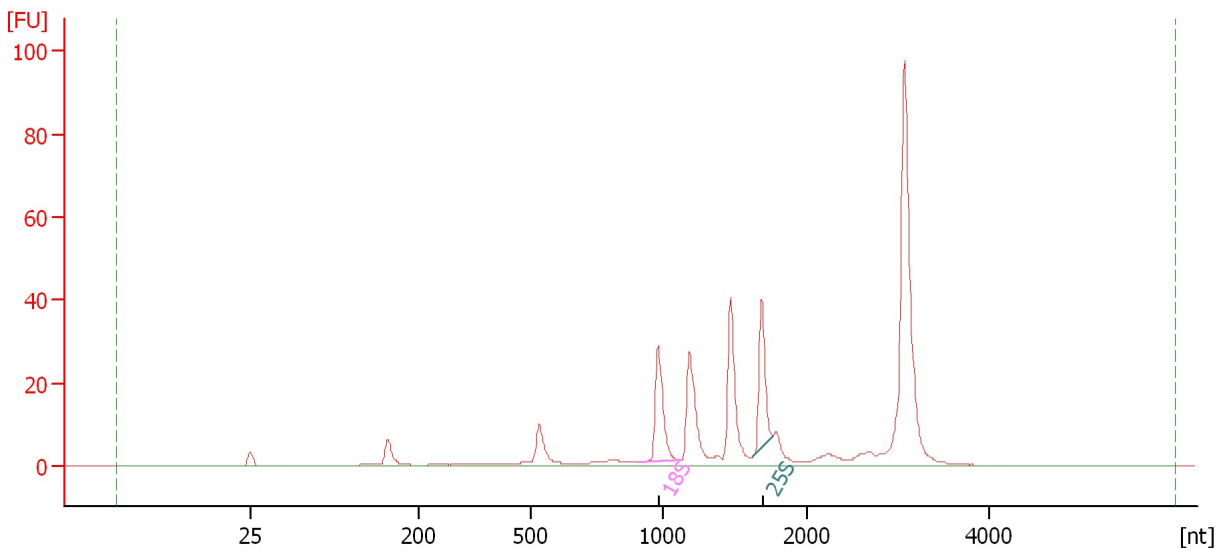
Fragment table for sample 11 : T4 48C q

Name	Start Size [nt]	End Size [nt]	Area	% of total Area
18S	1,594	1,794	49.1	13.4
25S	2,979	3,429	106.6	29.1

Assay Class: Plant RNA Nano
Data Path: C:\...ents and Settings\Bioanalyzer\2012-02-22\2012-02-22_006.xad

Created: 2/22/2012 3:44:55 PM
Modified: 2/22/2012 4:33:53 PM

Electropherogram Summary Continued ...



Overall Results for sample 12 :

RNA Area:	288.9	RNA Integrity Number (RIN):	7.8 (B.02.08)
RNA Concentration:	592 ng/μl	Result Flagging Color:	
rRNA Ratio [25s / 18s]:	1.0	Result Flagging Label:	RIN: 7.80

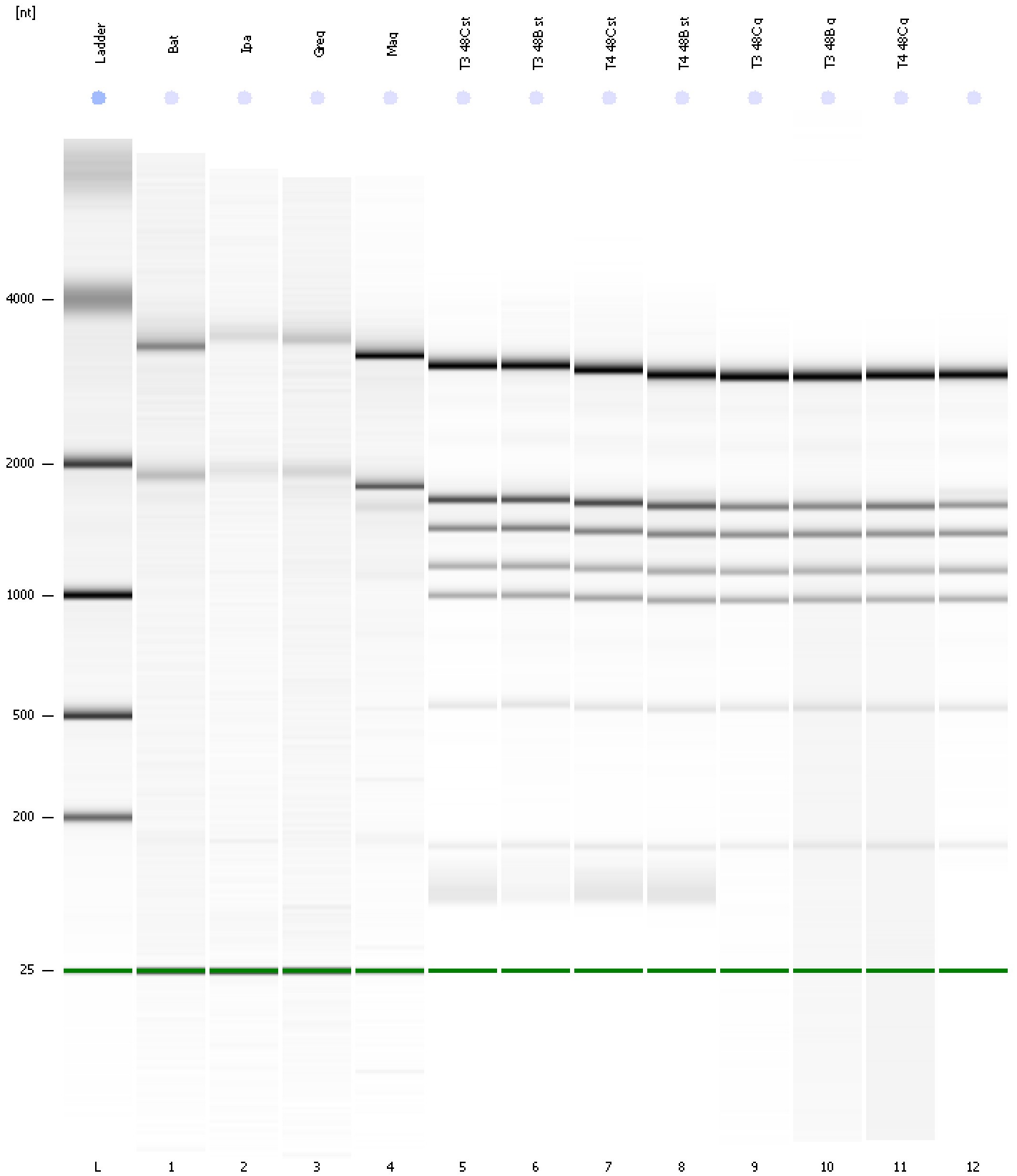
Fragment table for sample 12 :

Name	Start Size [nt]	End Size [nt]	Area	% of total Area
18S	912	1,128	25.2	8.7
25S	1,635	1,762	24.7	8.6

Assay Class: Plant RNA Nano
Data Path: C:\...ents and Settings\Bioanalyzer\2012-02-22\2012-02-22_006.xad

Created: 2/22/2012 3:44:55 PM
Modified: 2/22/2012 4:33:53 PM

Gel Image

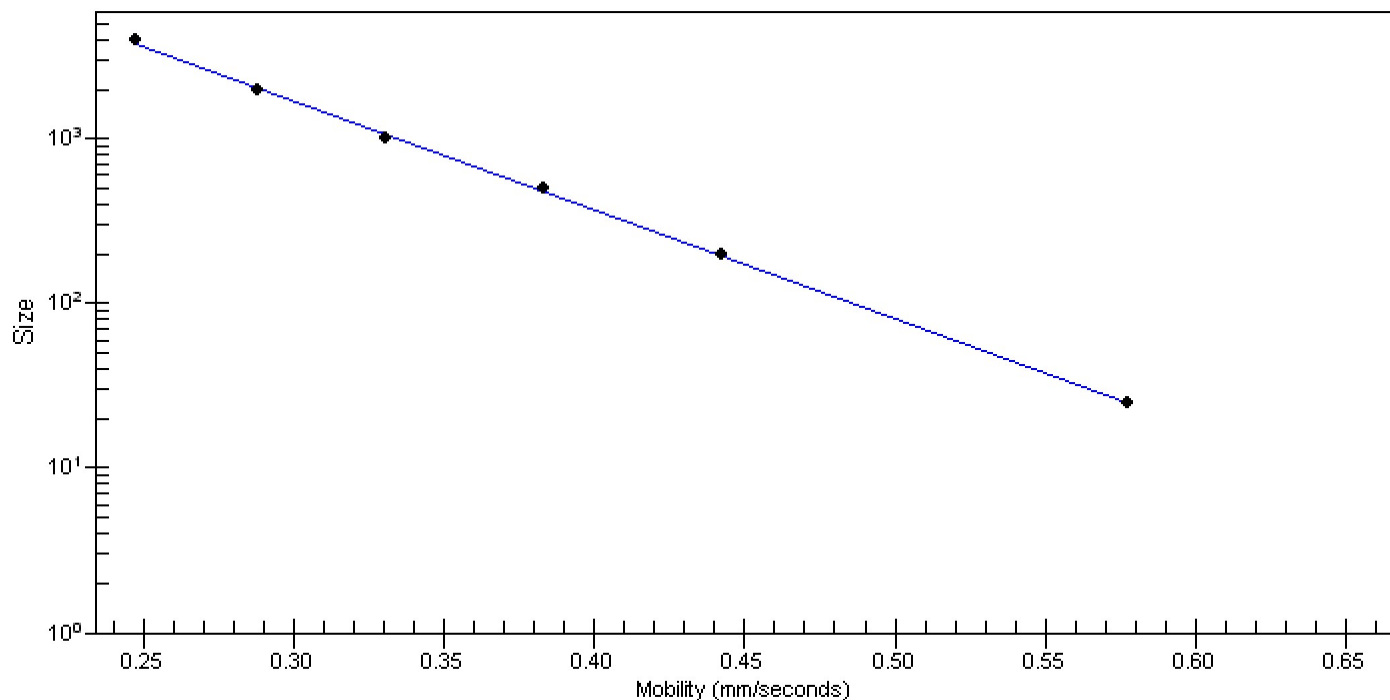


Assay Class: Plant RNA Nano
Data Path: C:\...ents and Settings\Bioanalyzer\2012-02-22\2012-02-22_006.xad

Created: 2/22/2012 3:44:55 PM
Modified: 2/22/2012 4:33:53 PM

Curves

Standard Curve



Assay Class: Plant RNA Nano
 Data Path: C:\...ents and Settings\Bioanalyzer\2012-02-22\2012-02-22_006.xad

Created: 2/22/2012 3:44:55 PM
 Modified: 2/22/2012 4:33:53 PM

Run Logbook

Description	Number	Source	Category	Sub Category	Time	Time Zone	User	Host
Run ended on port 1 (Number of wells acquired: 13)		Instrument	Run		2/22/2012 4:08:46 PM	(GMT --08:00) Pacific Standard Time	UC Davis	D8XSMGH1
Run started on port 1 (File: C:\Documents and Settings\Bioanalyzer\2012-02-22\2012-02-22_006.xad)		Instrument	Run		2/22/2012 3:45:02 PM	(GMT --08:00) Pacific Standard Time	UC Davis	D8XSMGH1
Product Number : G2938B		Instrument	Run		2/22/2012 3:45:02 PM	(GMT --08:00) Pacific Standard Time	UC Davis	D8XSMGH1
Name :		Instrument	Run		2/22/2012 3:45:02 PM	(GMT --08:00) Pacific Standard Time	UC Davis	D8XSMGH1
Vendor : Agilent Technologies		Instrument	Run		2/22/2012 3:45:02 PM	(GMT --08:00) Pacific Standard Time	UC Davis	D8XSMGH1
Serial# : DE13701086		Instrument	Run		2/22/2012 3:45:02 PM	(GMT --08:00) Pacific Standard Time	UC Davis	D8XSMGH1
Firmware : C.01.069		Instrument	Run		2/22/2012 3:45:02 PM	(GMT --08:00) Pacific Standard Time	UC Davis	D8XSMGH1
Cartridge : Electrode		Instrument	Run		2/22/2012 3:45:02 PM	(GMT --08:00) Pacific Standard Time	UC Davis	D8XSMGH1