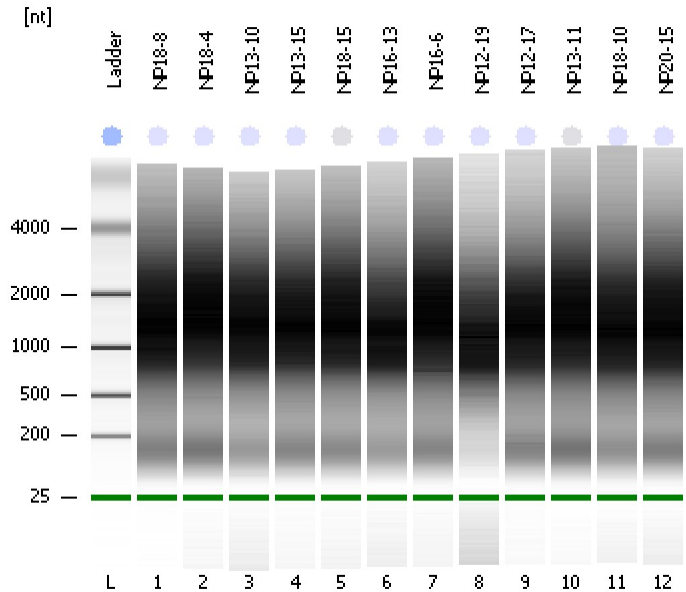


Assay Class: Eukaryote Total RNA Nano
Data Path: C:\...ents and Settings\Bioanalyzer\2012-02-23\2012-02-23_002.xad

Created: 2/23/2012 2:35:45 PM
Modified: 2/23/2012 3:04:02 PM

Electrophoresis File Run Summary



Instrument Information:

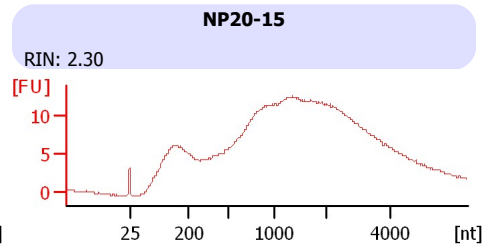
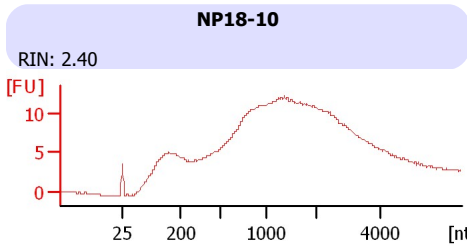
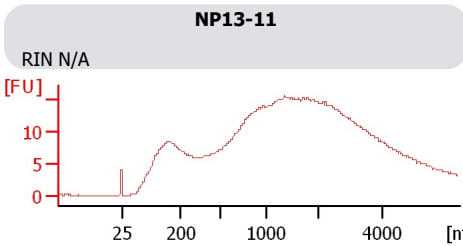
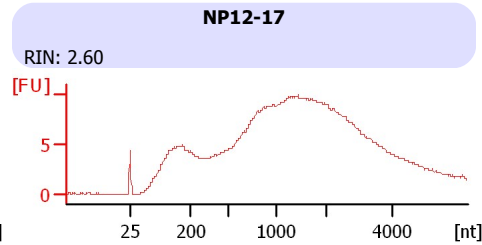
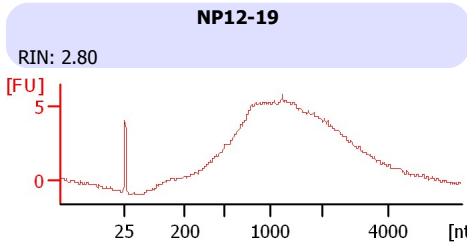
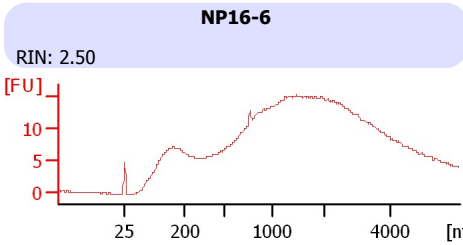
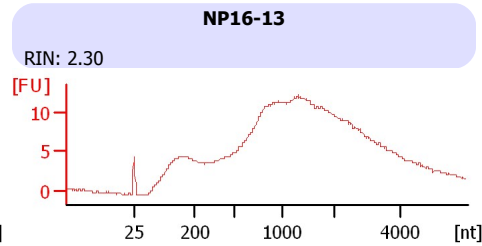
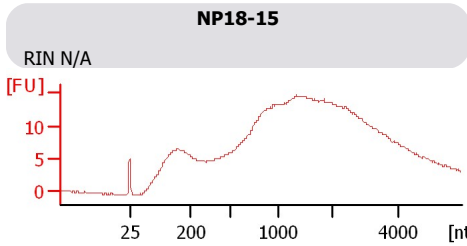
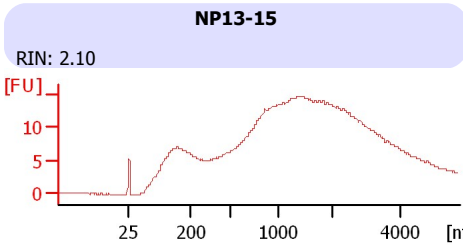
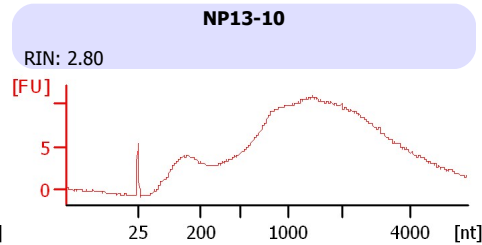
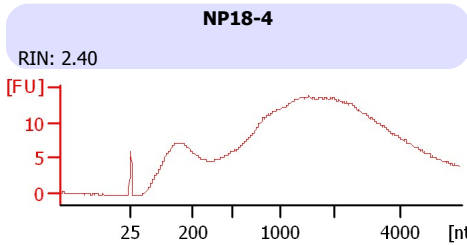
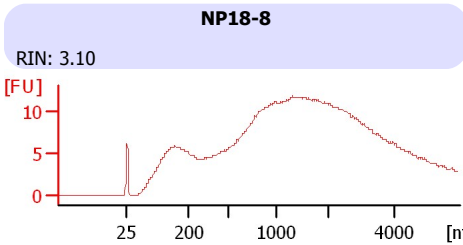
Instrument Name: DE13701086 Firmware: C.01.069
Serial#: DE13701086 Type: G2938B

Assay Information:

Assay Origin Path: C:\Program Files\Agilent\2100 bioanalyzer\2100 expert\assays\RNA\Eukaryote Total RNA Nano Series II.xsy
Assay Class: Eukaryote Total RNA Nano
Version: 2.6
Assay Comments: Total RNA Analysis ng sensitivity (Eukaryote)
© Copyright 2003 - 2009 Agilent Technologies, Inc.

Chip Information:

Chip Lot #: Reagent Kit Lot #: Chip Comments:



Assay Class: Eukaryote Total RNA Nano
 Data Path: C:\...ents and Settings\Bioanalyzer\2012-02-23\2012-02-23_002.xad

Created: 2/23/2012 2:35:45 PM
 Modified: 2/23/2012 3:04:02 PM

Electrophoresis File Run Summary (Chip Summary)

Sample Name	Sample Comment	Status	Result Label	Result Color
NP18-8		✓	RIN: 3.10	
NP18-4		✓	RIN: 2.40	
NP13-10		✓	RIN: 2.80	
NP13-15		✓	RIN: 2.10	
NP18-15		✓	RIN N/A	
NP16-13		✓	RIN: 2.30	
NP16-6		✓	RIN: 2.50	
NP12-19		✓	RIN: 2.80	
NP12-17		✓	RIN: 2.60	
NP13-11		✓	RIN N/A	
NP18-10		✓	RIN: 2.40	
NP20-15		✓	RIN: 2.30	
Ladder		✓	All Other Samples	

Chip Lot #

Reagent Kit Lot #

Chip Comments :

Assay Class: Eukaryote Total RNA Nano
Data Path: C:\...ents and Settings\Bioanalyzer\2012-02-23\2012-02-23_002.xad

Created: 2/23/2012 2:35:45 PM
Modified: 2/23/2012 3:04:02 PM

Electrophoresis Assay Details

General Analysis Settings

Number of Available Sample and Ladder Wells (Max.) : 13
Minimum Visible Range [s] : 17
Maximum Visible Range [s] : 70
Start Analysis Time Range [s] : 19
End Analysis Time Range [s] : 69
Ladder Concentration [ng/μl] : 150
Lower Marker Concentration [ng/μl] : 0
Upper Marker Concentration [ng/μl] : 0
Used Lower Marker for Quantitation
Standard Curve Fit is Logarithmic
Show Data Aligned to Lower Marker

Integrator Settings

Integration Start Time [s] : 19
Integration End Time [s] : 69
Slope Threshold : 0.6
Height Threshold [FU] : 0.5
Area Threshold : 0.2
Width Threshold [s] : 0.5
Baseline Plateau [s] : 6

Filter Settings

Filter Width [s] : 0.5
Polynomial Order : 4

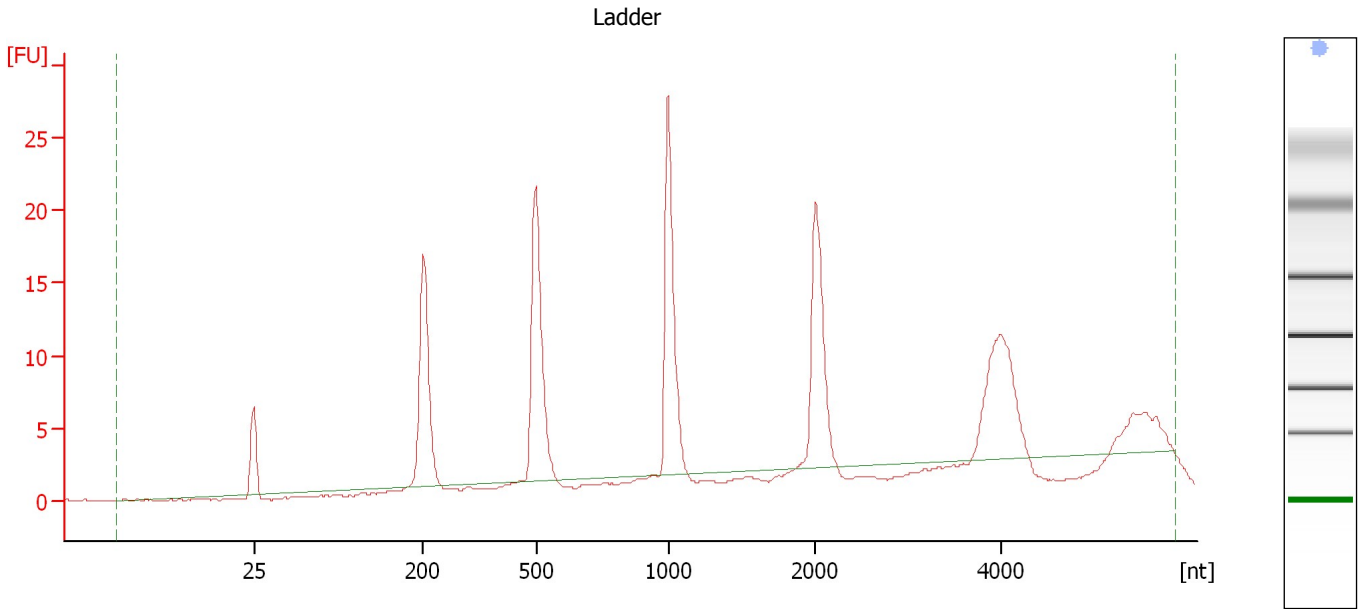
Ladder

Ladder Peak	Size
1	25
2	200
3	500
4	1000
5	2000
6	4000

Assay Class: Eukaryote Total RNA Nano
Data Path: C:\...ents and Settings\Bioanalyzer\2012-02-23\2012-02-23_002.xad

Created: 2/23/2012 2:35:45 PM
Modified: 2/23/2012 3:04:02 PM

Electropherogram Summary



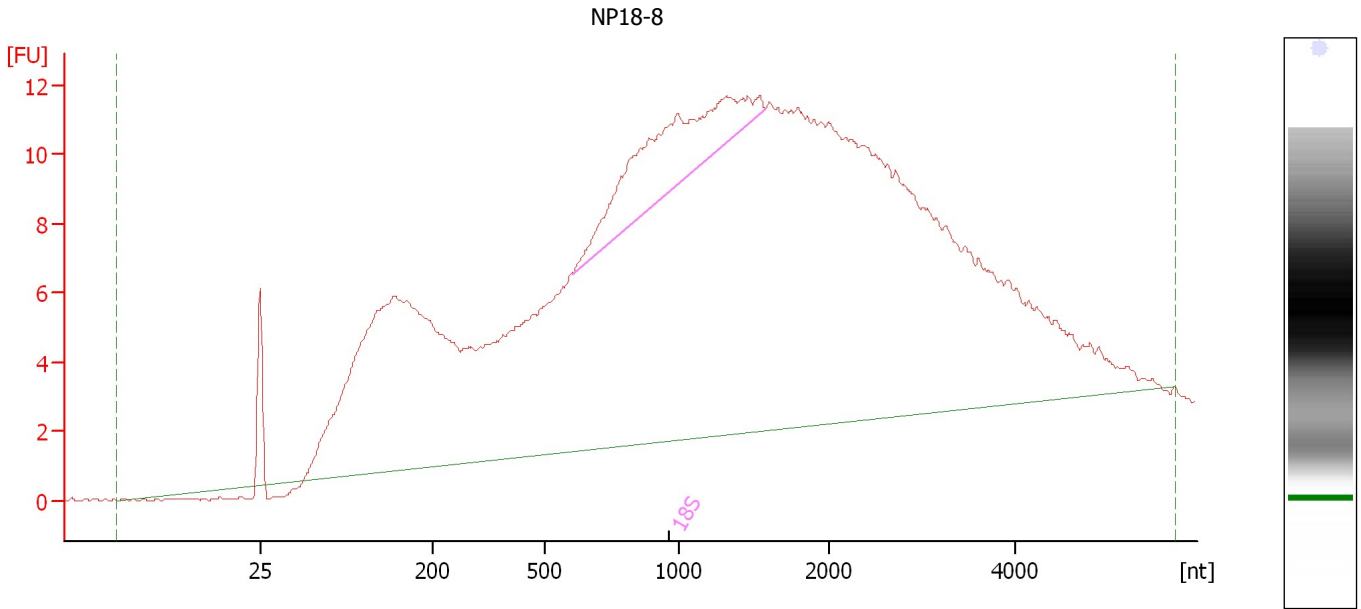
Overall Results for Ladder

RNA Area:	127.4	Result Flagging Color:	
RNA Concentration:	150 ng/μl	Result Flagging Label:	All Other Samples

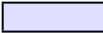
Assay Class: Eukaryote Total RNA Nano
Data Path: C:\...ents and Settings\Bioanalyzer\2012-02-23\2012-02-23_002.xad

Created: 2/23/2012 2:35:45 PM
Modified: 2/23/2012 3:04:02 PM

Electropherogram Summary Continued ...



Overall Results for sample 1 : NP18-8

RNA Area:	458.3	RNA Integrity Number (RIN):	3.1 (B.02.08, Anomaly Threshold(s) manually adapted)
RNA Concentration:	540 ng/μl	Result Flagging Color:	
rRNA Ratio [28s / 18s]:	0.0	Result Flagging Label:	RIN: 3.10

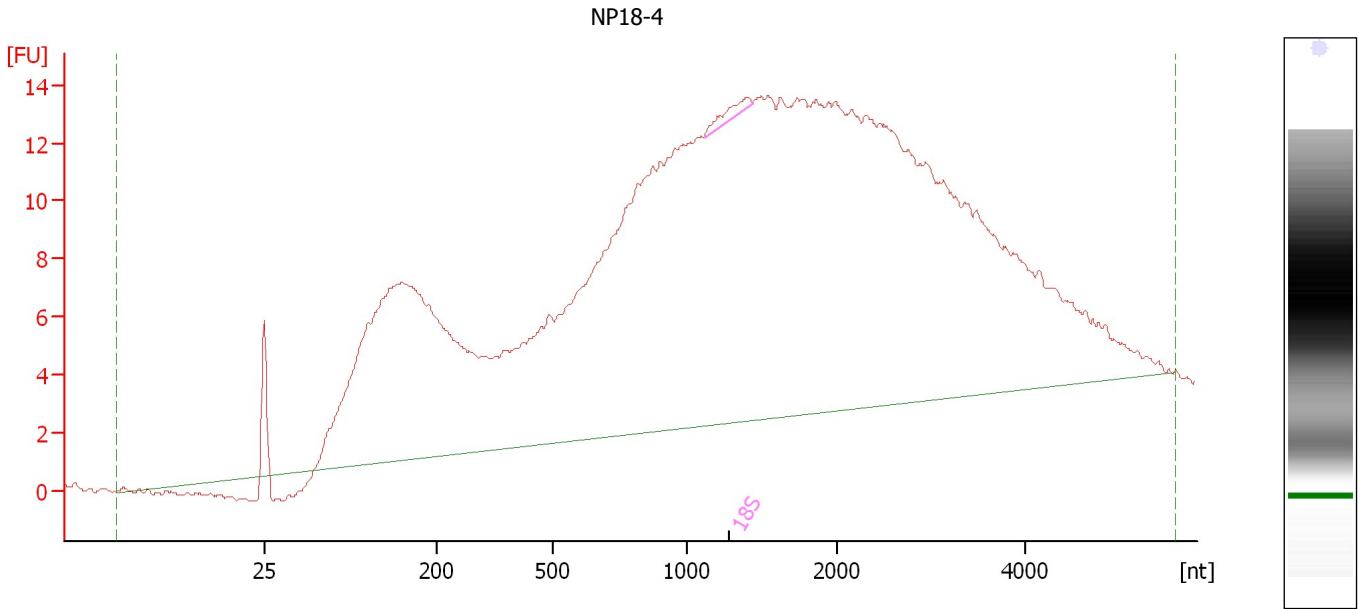
Fragment table for sample 1 : NP18-8

Name	Start Size [nt]	End Size [nt]	Area	% of total Area
18S	603	1,576	25.0	5.5

Assay Class: Eukaryote Total RNA Nano
 Data Path: C:\...ents and Settings\Bioanalyzer\2012-02-23\2012-02-23_002.xad

Created: 2/23/2012 2:35:45 PM
 Modified: 2/23/2012 3:04:02 PM

Electropherogram Summary Continued ...



Overall Results for sample 2 : NP18-4

RNA Area:	522.4	RNA Integrity Number (RIN):	2.4 (B.02.08, Anomaly Threshold(s) manually adapted)
RNA Concentration:	615 ng/μl	Result Flagging Color:	
rRNA Ratio [28s / 18s]:	0.0	Result Flagging Label:	RIN: 2.40

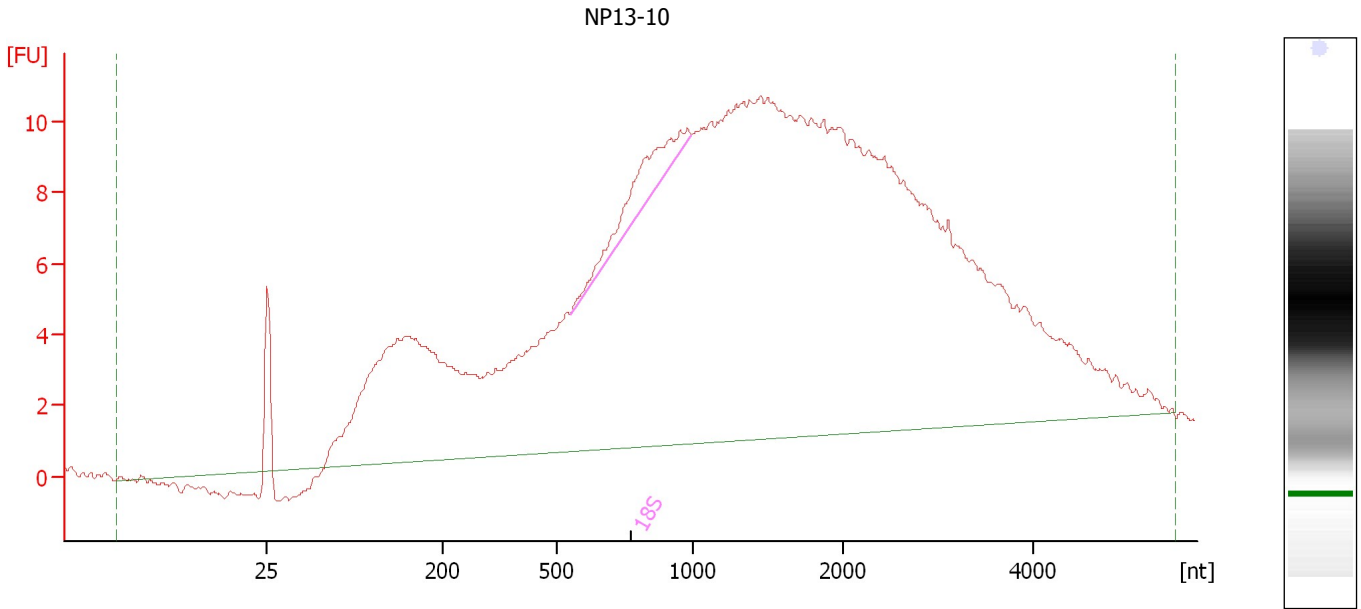
Fragment table for sample 2 : NP18-4

Name	Start Size [nt]	End Size [nt]	Area	% of total Area
18S	1,117	1,437	1.4	0.3

Assay Class: Eukaryote Total RNA Nano
Data Path: C:\...ents and Settings\Bioanalyzer\2012-02-23\2012-02-23_002.xad

Created: 2/23/2012 2:35:45 PM
Modified: 2/23/2012 3:04:02 PM

Electropherogram Summary Continued ...



Overall Results for sample 3 : NP13-10

RNA Area:	407.9	RNA Integrity Number (RIN):	2.8 (B.02.08, Anomaly Threshold(s) manually adapted)
RNA Concentration:	480 ng/μl	Result Flagging Color:	
rRNA Ratio [28s / 18s]:	0.0	Result Flagging Label:	RIN: 2.80

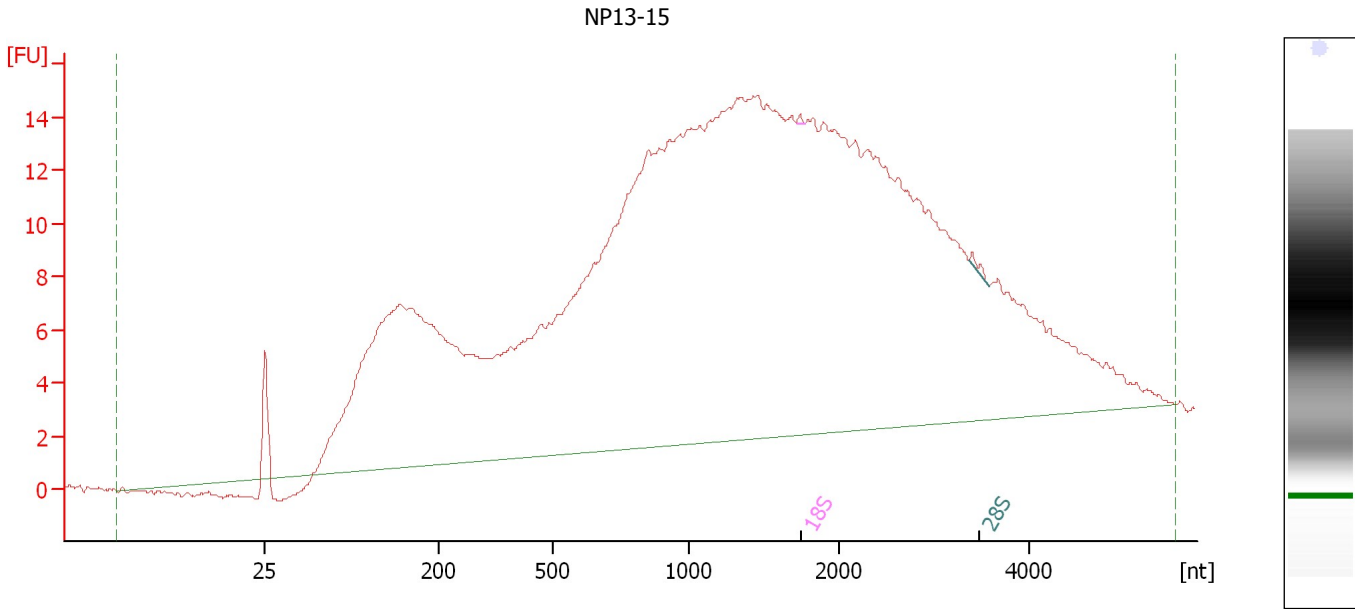
Fragment table for sample 3 : NP13-10

Name	Start Size [nt]	End Size [nt]	Area	% of total Area
18S	548	997	7.6	1.9

Assay Class: Eukaryote Total RNA Nano
 Data Path: C:\...ents and Settings\Bioanalyzer\2012-02-23\2012-02-23_002.xad

Created: 2/23/2012 2:35:45 PM
 Modified: 2/23/2012 3:04:02 PM

Electropherogram Summary Continued ...



Overall Results for sample 4 : NP13-15

RNA Area:	571.9	RNA Integrity Number (RIN):	2.1 (B.02.08, Anomaly Threshold(s) manually adapted)
RNA Concentration:	674 ng/μl	Result Flagging Color:	
rRNA Ratio [28s / 18s]:	3.0	Result Flagging Label:	RIN: 2.10

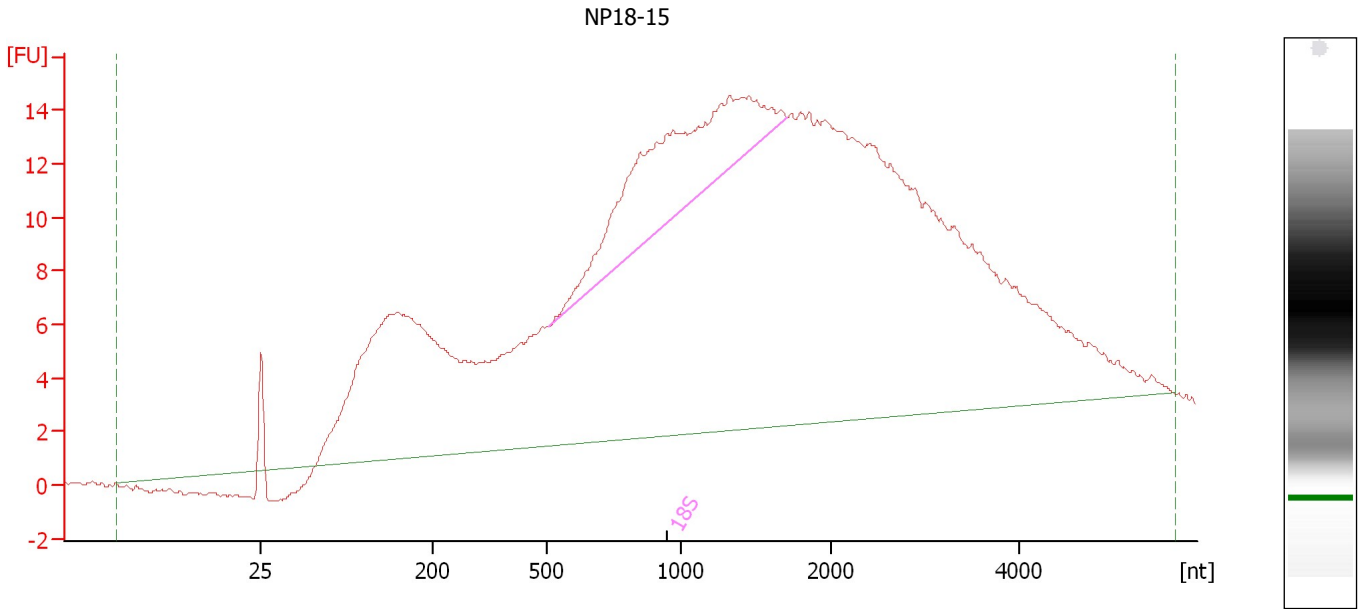
Fragment table for sample 4 : NP13-15

Name	Start Size [nt]	End Size [nt]	Area	% of total Area
18S	1,714	1,771	0.1	0.0
28S	3,367	3,582	0.4	0.1

Assay Class: Eukaryote Total RNA Nano
Data Path: C:\...ents and Settings\Bioanalyzer\2012-02-23\2012-02-23_002.xad

Created: 2/23/2012 2:35:45 PM
Modified: 2/23/2012 3:04:02 PM

Electropherogram Summary Continued ...



Setpoint Deviations for sample 5 : NP18-15

Width Threshold [s] : 0.01

Overall Results for sample 5 : NP18-15

RNA Area: 550.2 Result Flagging Color:
RNA Concentration: 648 ng/μl Result Flagging Label: RIN N/A
rRNA Ratio [28s / 18s]: 0.0

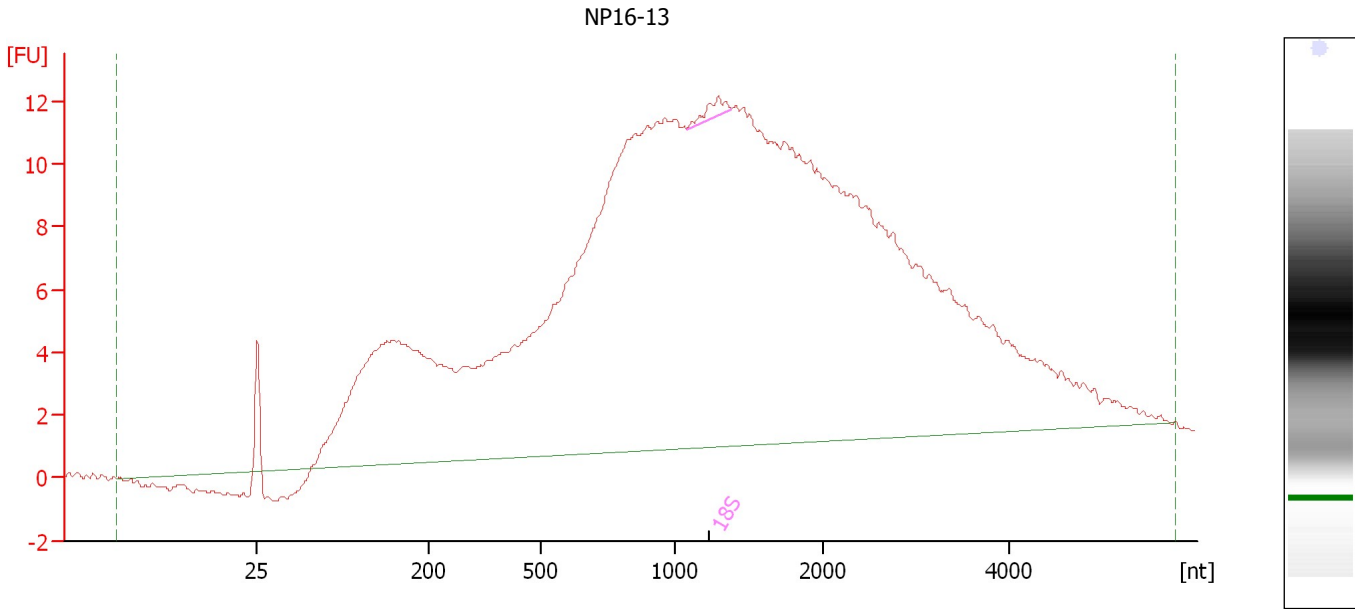
Fragment table for sample 5 : NP18-15

Name	Start Size [nt]	End Size [nt]	Area	% of total Area
18S	509	1,706	48.3	8.8

Assay Class: Eukaryote Total RNA Nano
Data Path: C:\...ents and Settings\Bioanalyzer\2012-02-23\2012-02-23_002.xad

Created: 2/23/2012 2:35:45 PM
Modified: 2/23/2012 3:04:02 PM

Electropherogram Summary Continued ...



Setpoint Deviations for sample 6 : NP16-13

Width Threshold [s] : 0.01

Overall Results for sample 6 : NP16-13

RNA Area: 451.7 RNA Integrity Number (RIN): 2.3 (B.02.08, Anomaly Threshold(s) manually adapted)
RNA Concentration: 532 ng/μl
rRNA Ratio [28s / 18s]: 0.0
Result Flagging Color:
Result Flagging Label: RIN: 2.30

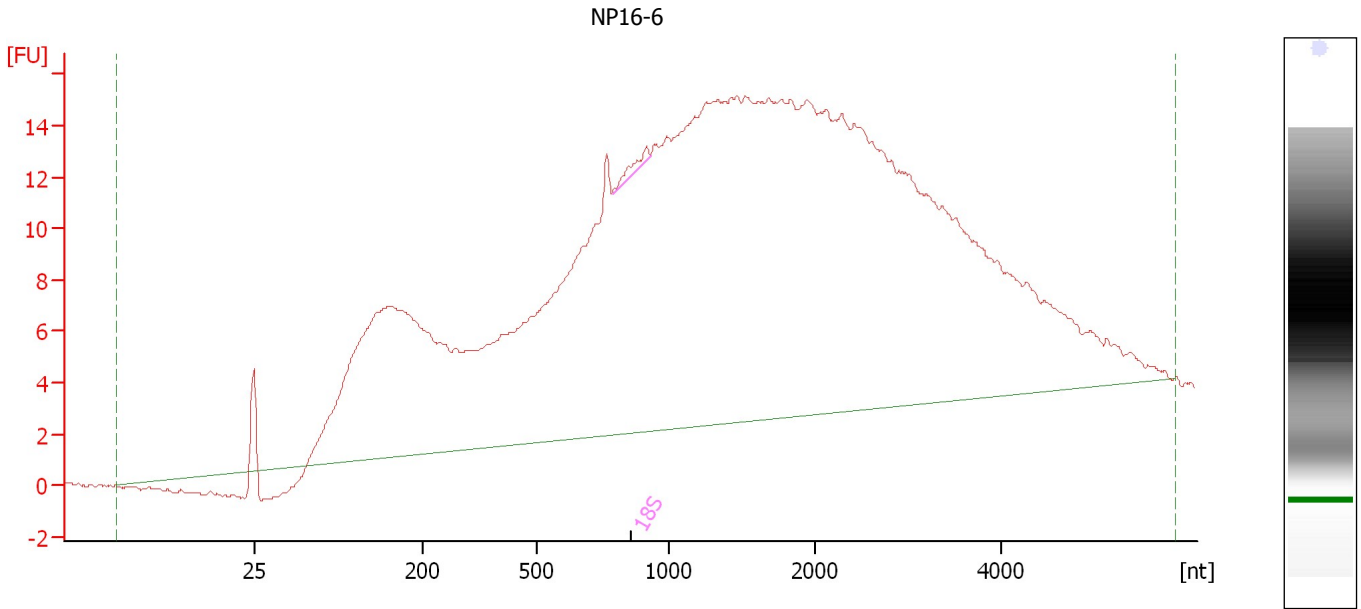
Fragment table for sample 6 : NP16-13

Name	Start Size [nt]	End Size [nt]	Area	% of total Area
18S	1,084	1,387	1.2	0.3

Assay Class: Eukaryote Total RNA Nano
Data Path: C:\...ents and Settings\Bioanalyzer\2012-02-23\2012-02-23_002.xad

Created: 2/23/2012 2:35:45 PM
Modified: 2/23/2012 3:04:02 PM

Electropherogram Summary Continued ...



Setpoint Deviations for sample 7 : NP16-6

Width Threshold [s] : 0.01

Overall Results for sample 7 : NP16-6

RNA Area: 594.3 RNA Integrity Number (RIN): 2.5 (B.02.08, Anomaly Threshold(s) manually adapted)
RNA Concentration: 700 ng/μl
rRNA Ratio [28s / 18s]: 0.0 Result Flagging Color:
Result Flagging Label: RIN: 2.50

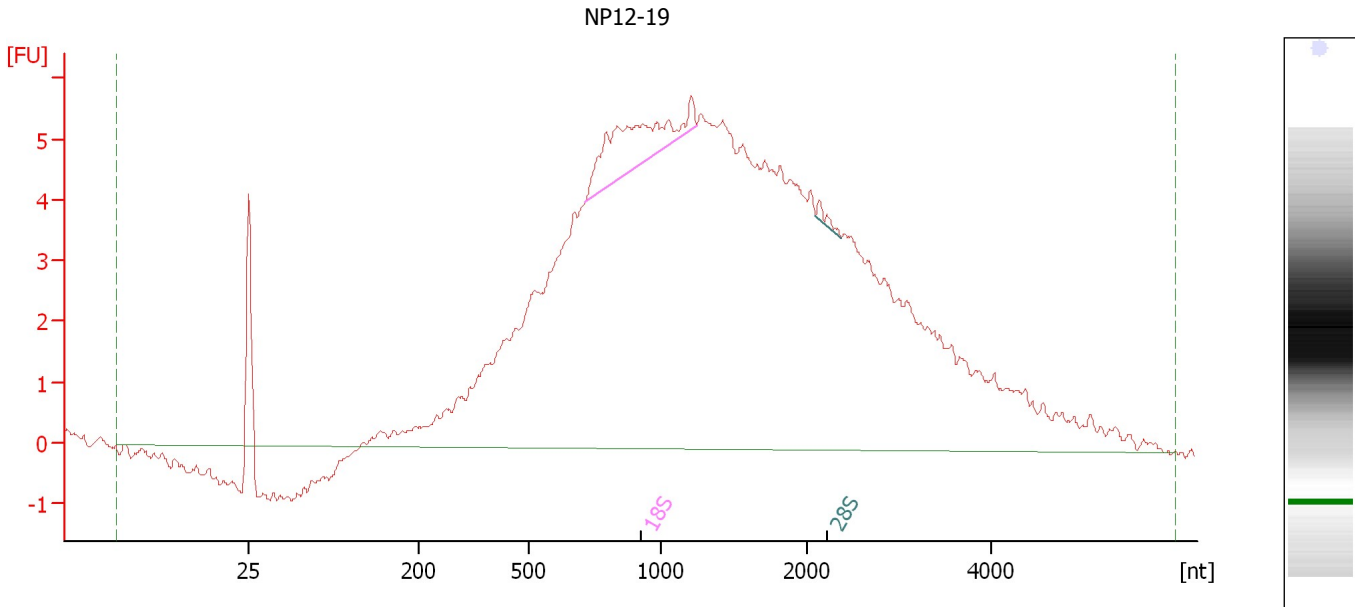
Fragment table for sample 7 : NP16-6

Name	Start Size [nt]	End Size [nt]	Area	% of total Area
18S	790	931	1.0	0.2

Assay Class: Eukaryote Total RNA Nano
 Data Path: C:\...ents and Settings\Bioanalyzer\2012-02-23\2012-02-23_002.xad

Created: 2/23/2012 2:35:45 PM
 Modified: 2/23/2012 3:04:02 PM

Electropherogram Summary Continued ...



Overall Results for sample 8 : NP12-19

RNA Area:	196.8	RNA Integrity Number (RIN):	2.8 (B.02.08, Anomaly Threshold(s) manually adapted)
RNA Concentration:	232 ng/μl	Result Flagging Color:	
rRNA Ratio [28s / 18s]:	0.0	Result Flagging Label:	RIN: 2.80

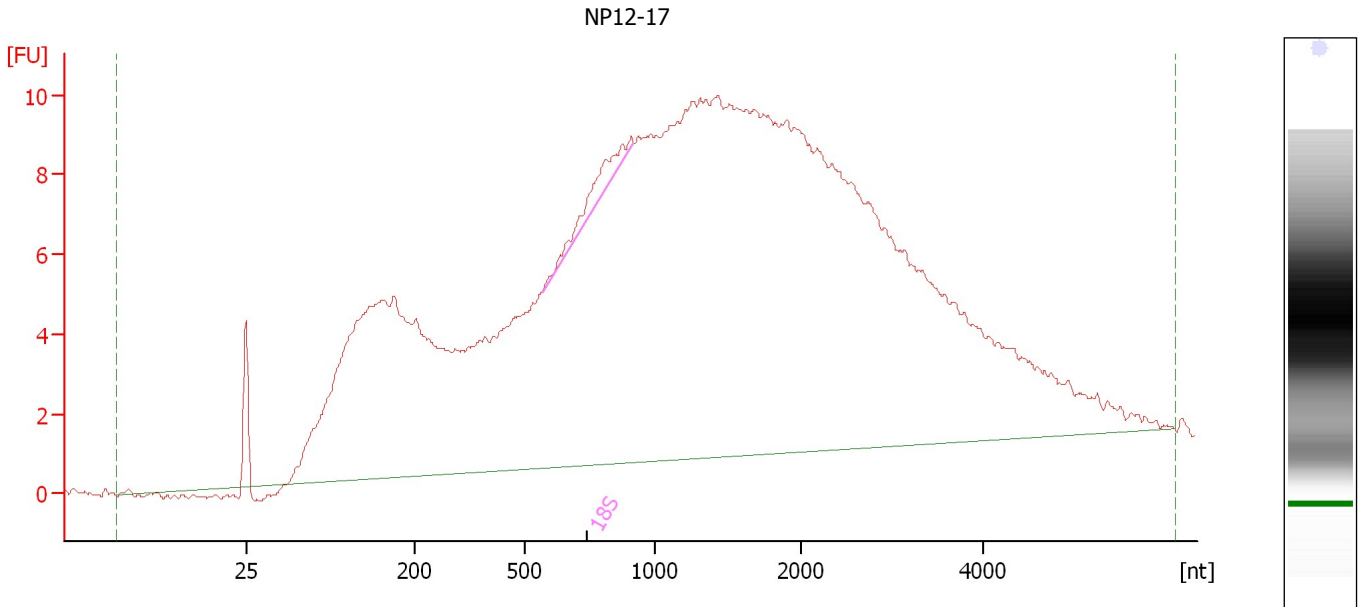
Fragment table for sample 8 : NP12-19

Name	Start Size [nt]	End Size [nt]	Area	% of total Area
18S	711	1,240	5.9	3.0
28S	2,093	2,373	0.3	0.1

Assay Class: Eukaryote Total RNA Nano
 Data Path: C:\...ents and Settings\Bioanalyzer\2012-02-23\2012-02-23_002.xad

Created: 2/23/2012 2:35:45 PM
 Modified: 2/23/2012 3:04:02 PM

Electropherogram Summary Continued ...



Overall Results for sample 9 : NP12-17

RNA Area:	418.5	RNA Integrity Number (RIN):	2.6 (B.02.08, Anomaly Threshold(s) manually adapted)
RNA Concentration:	493 ng/μl	Result Flagging Color:	
rRNA Ratio [28s / 18s]:	0.0	Result Flagging Label:	RIN: 2.60

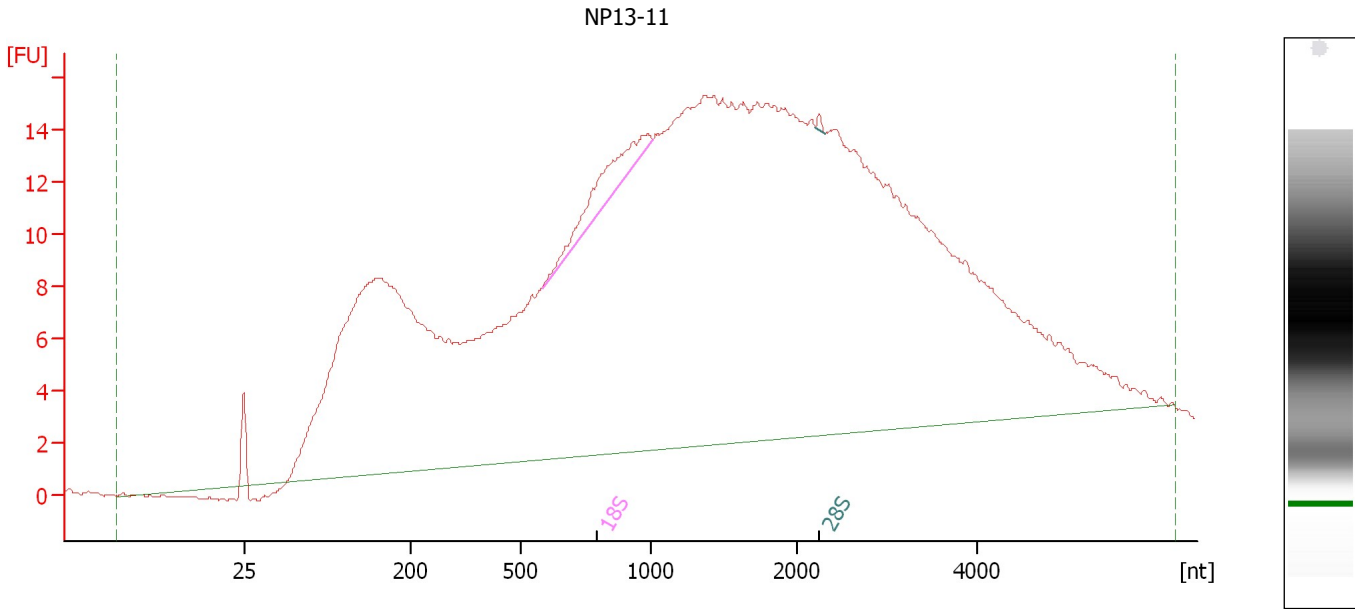
Fragment table for sample 9 : NP12-17

Name	Start Size [nt]	End Size [nt]	Area	% of total Area
18S	567	916	3.2	0.8

Assay Class: Eukaryote Total RNA Nano
 Data Path: C:\...ents and Settings\Bioanalyzer\2012-02-23\2012-02-23_002.xad

Created: 2/23/2012 2:35:45 PM
 Modified: 2/23/2012 3:04:02 PM

Electropherogram Summary Continued ...



Setpoint Deviations for sample 10 : NP13-11

Width Threshold [s] : 0.01

Overall Results for sample 10 : NP13-11

RNA Area: 661.9 Result Flagging Color:
 RNA Concentration: 780 ng/μl Result Flagging Label: RIN N/A
 rRNA Ratio [28s / 18s]: 0.0

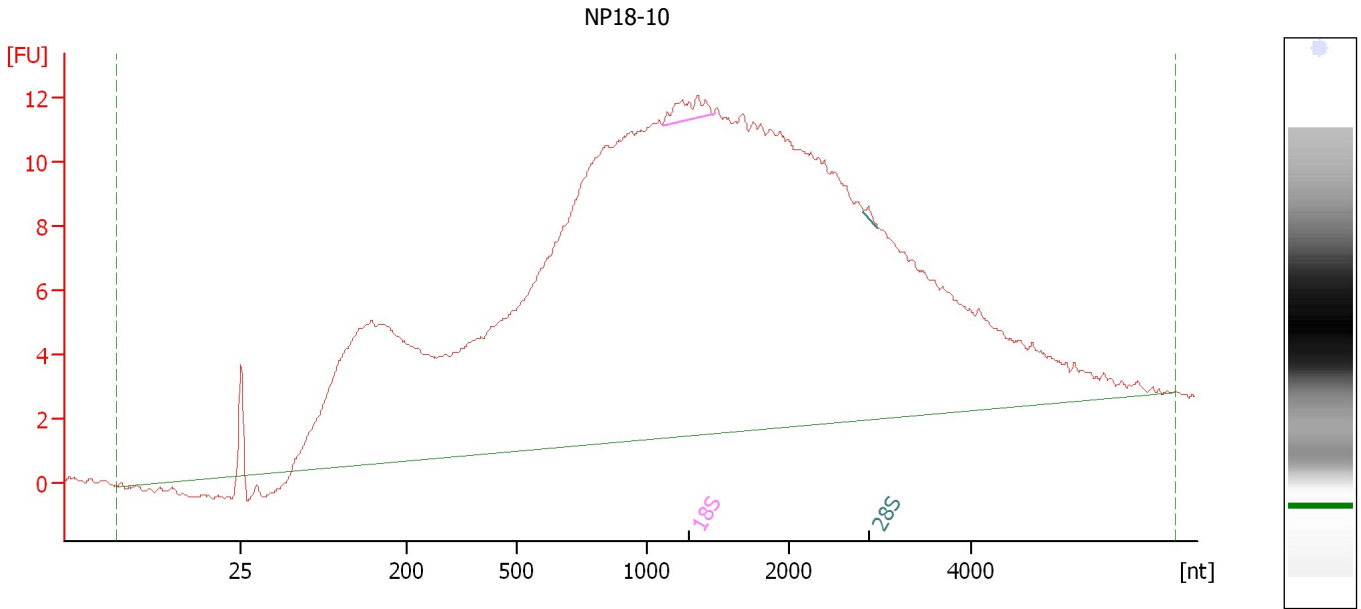
Fragment table for sample 10 : NP13-11

Name	Start Size [nt]	End Size [nt]	Area	% of total Area
18S	580	1,005	8.4	1.3
28S	2,213	2,319	0.2	0.0

Assay Class: Eukaryote Total RNA Nano
Data Path: C:\...ents and Settings\Bioanalyzer\2012-02-23\2012-02-23_002.xad

Created: 2/23/2012 2:35:45 PM
Modified: 2/23/2012 3:04:02 PM

Electropherogram Summary Continued ...



Setpoint Deviations for sample 11 : NP18-10

Width Threshold [s] : 0.01

Overall Results for sample 11 : NP18-10

RNA Area: 463.2 RNA Integrity Number (RIN): 2.4 (B.02.08, Anomaly Threshold(s) manually adapted)
RNA Concentration: 546 ng/μl
rRNA Ratio [28s / 18s]: 0.1
Result Flagging Color:
Result Flagging Label: RIN: 2.40

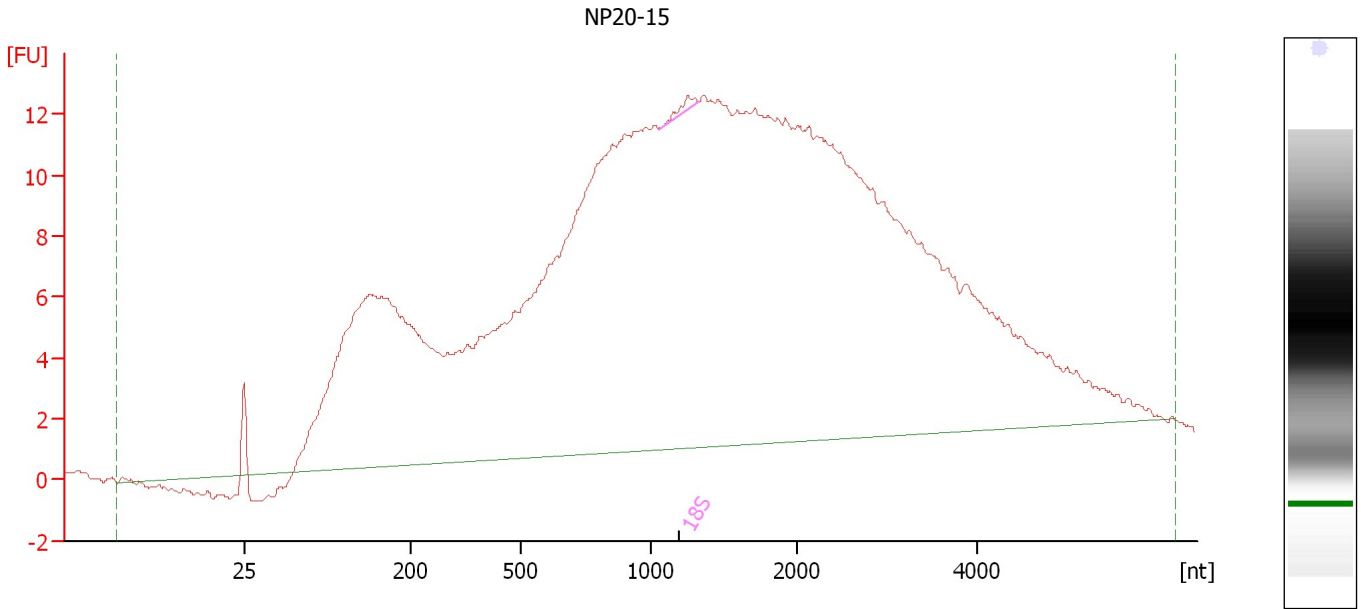
Fragment table for sample 11 : NP18-10

Name	Start Size [nt]	End Size [nt]	Area	% of total Area
18S	1,111	1,474	2.2	0.5
28S	2,818	2,972	0.1	0.0

Assay Class: Eukaryote Total RNA Nano
Data Path: C:\...ents and Settings\Bioanalyzer\2012-02-23\2012-02-23_002.xad

Created: 2/23/2012 2:35:45 PM
Modified: 2/23/2012 3:04:02 PM

Electropherogram Summary Continued ...



Setpoint Deviations for sample 12 : NP20-15

Width Threshold [s] : 0.01

Overall Results for sample 12 : NP20-15

RNA Area: 543.5 RNA Integrity Number (RIN): 2.3 (B.02.08, Anomaly Threshold(s) manually adapted)
RNA Concentration: 640 ng/μl
rRNA Ratio [28s / 18s]: 0.0 Result Flagging Color:
Result Flagging Label: RIN: 2.30

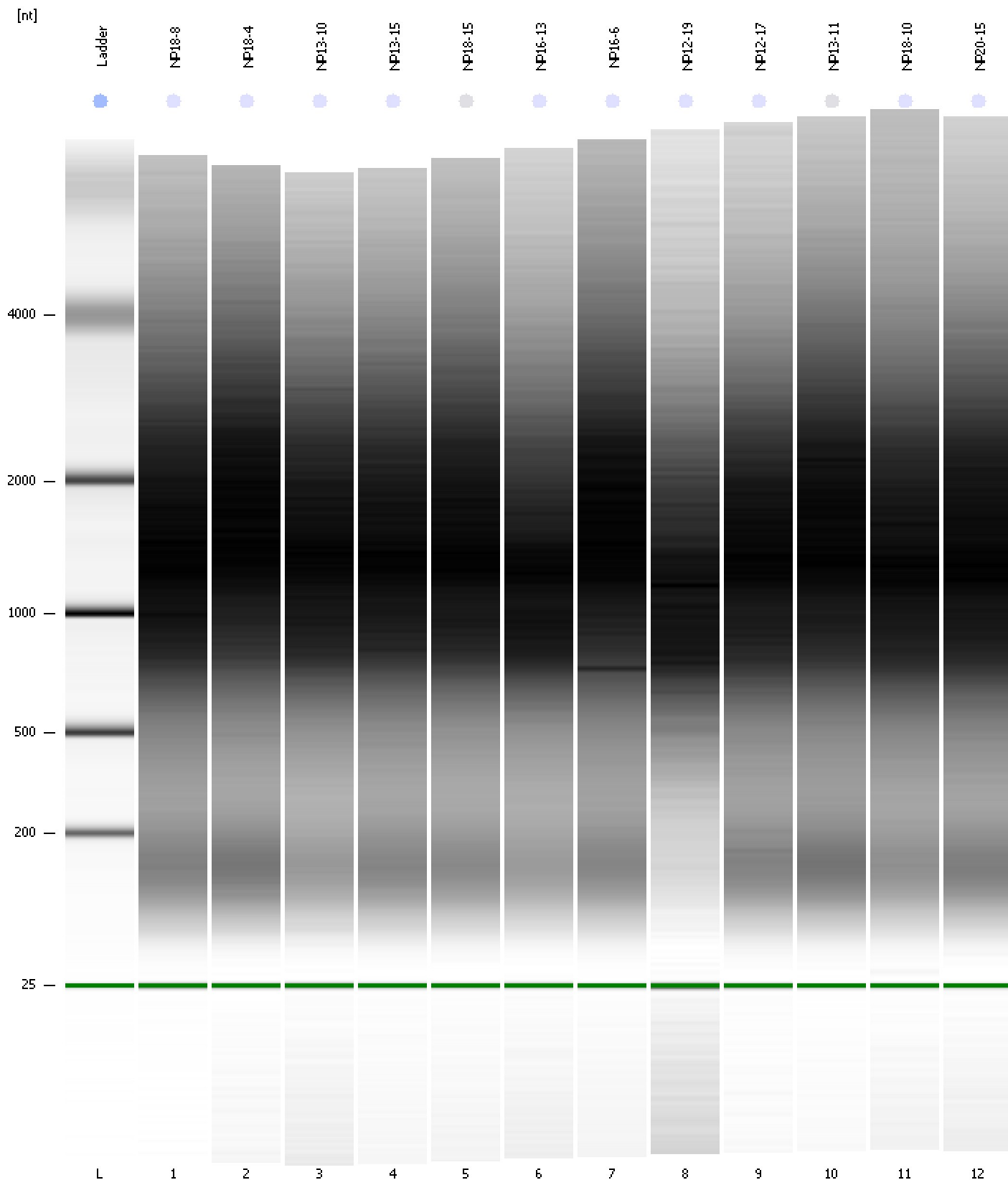
Fragment table for sample 12 : NP20-15

Name	Start Size [nt]	End Size [nt]	Area	% of total Area
18S	1,049	1,328	0.7	0.1

Assay Class: Eukaryote Total RNA Nano
Data Path: C:\...ents and Settings\Bioanalyzer\2012-02-23\2012-02-23_002.xad

Created: 2/23/2012 2:35:45 PM
Modified: 2/23/2012 3:04:02 PM

Gel Image

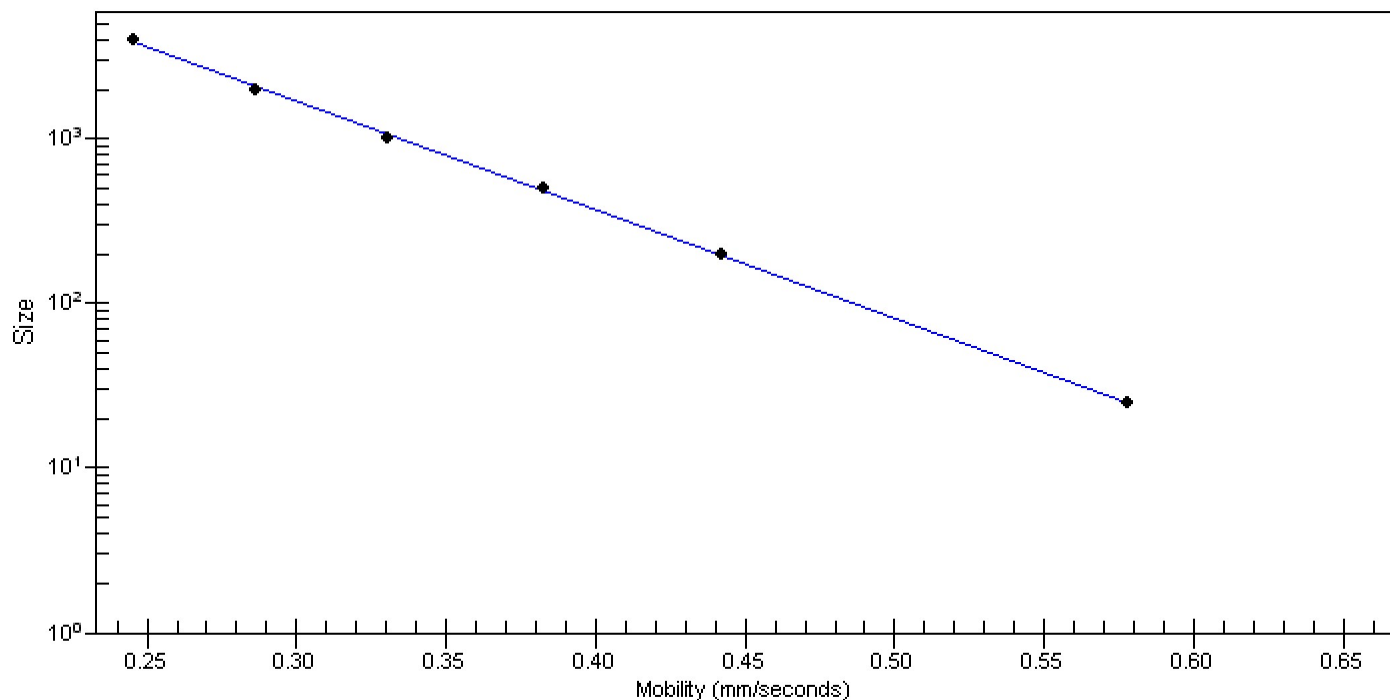


Assay Class: Eukaryote Total RNA Nano
Data Path: C:\...ents and Settings\Bioanalyzer\2012-02-23\2012-02-23_002.xad

Created: 2/23/2012 2:35:45 PM
Modified: 2/23/2012 3:04:02 PM

Curves

Standard Curve



Assay Class: Eukaryote Total RNA Nano
 Data Path: C:\...ents and Settings\Bioanalyzer\2012-02-23\2012-02-23_002.xad

Created: 2/23/2012 2:35:45 PM
 Modified: 2/23/2012 3:04:02 PM

Run Logbook

Description	Number	Source	Category	Sub Category	Time	Time Zone	User	Host
Run ended on port 1 (Number of wells acquired: 13)		Instrument	Run		2/23/2012 2:59:38 PM	(GMT --08:00) Pacific Standard Time	UC Davis	D8XSMGH1
Run started on port 1 (File: C:\Documents and Settings\Bioanalyzer\2012-02-23\2012-02-23_002.xad)		Instrument	Run		2/23/2012 2:35:52 PM	(GMT --08:00) Pacific Standard Time	UC Davis	D8XSMGH1
Product Number : G2938B		Instrument	Run		2/23/2012 2:35:52 PM	(GMT --08:00) Pacific Standard Time	UC Davis	D8XSMGH1
Name :		Instrument	Run		2/23/2012 2:35:52 PM	(GMT --08:00) Pacific Standard Time	UC Davis	D8XSMGH1
Vendor : Agilent Technologies		Instrument	Run		2/23/2012 2:35:52 PM	(GMT --08:00) Pacific Standard Time	UC Davis	D8XSMGH1
Serial# : DE13701086		Instrument	Run		2/23/2012 2:35:52 PM	(GMT --08:00) Pacific Standard Time	UC Davis	D8XSMGH1
Firmware : C.01.069		Instrument	Run		2/23/2012 2:35:52 PM	(GMT --08:00) Pacific Standard Time	UC Davis	D8XSMGH1
Cartridge : Electrode		Instrument	Run		2/23/2012 2:35:52 PM	(GMT --08:00) Pacific Standard Time	UC Davis	D8XSMGH1