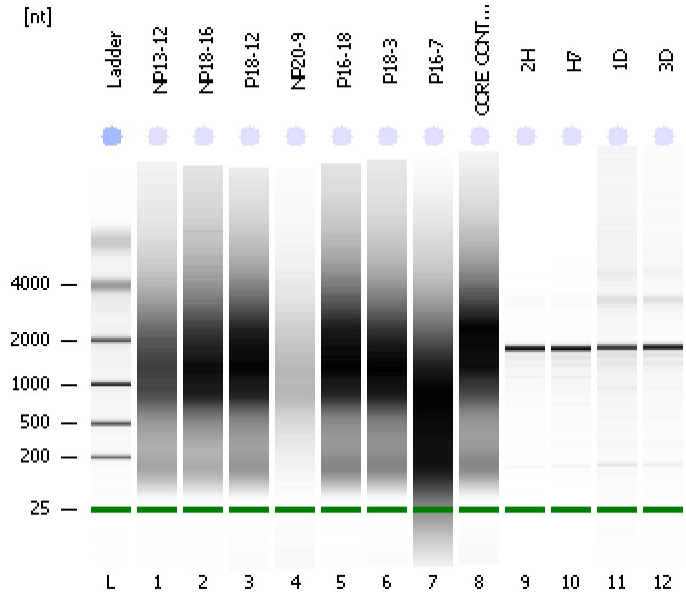


Assay Class: Eukaryote Total RNA Nano
Data Path: C:\...ents and Settings\Bioanalyzer\2012-02-23\2012-02-23_003.xad

Created: 2/23/2012 3:15:16 PM
Modified: 2/23/2012 4:02:54 PM

Electrophoresis File Run Summary



Instrument Information:

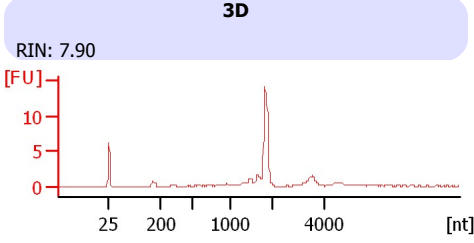
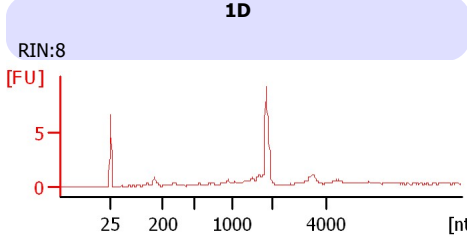
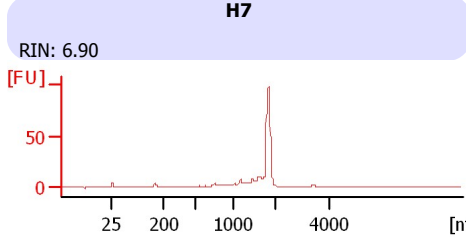
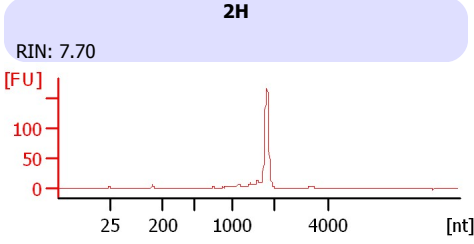
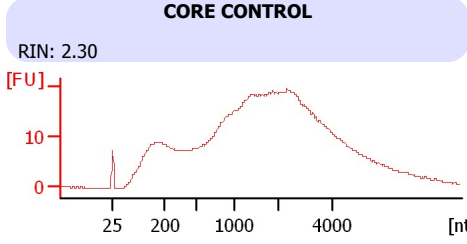
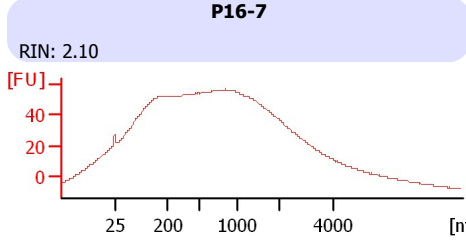
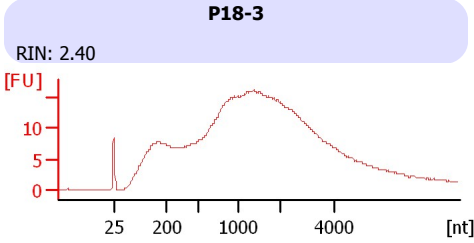
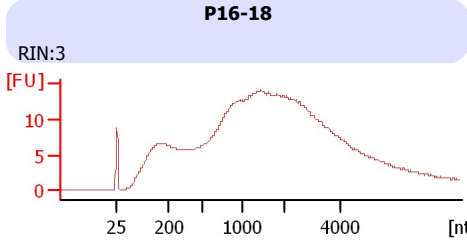
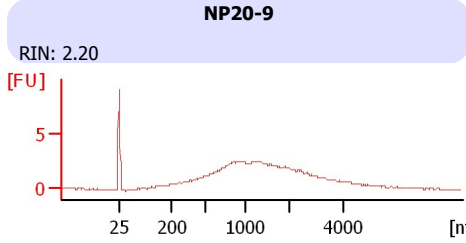
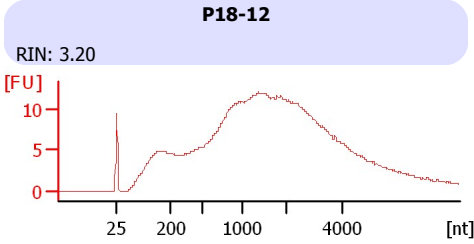
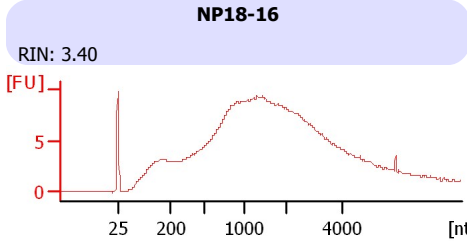
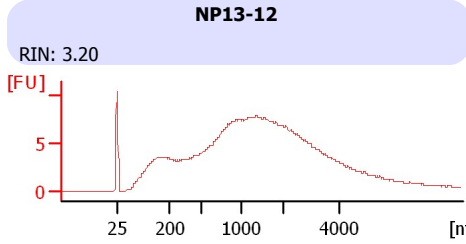
Instrument Name: DE13701086 Firmware: C.01.069
Serial#: DE13701086 Type: G2938B

Assay Information:

Assay Origin Path: C:\Program Files\Agilent\2100 bioanalyzer\2100 expert\assays\RNA\Eukaryote Total RNA Nano Series II.xsy
Assay Class: Eukaryote Total RNA Nano
Version: 2.6
Assay Comments: Total RNA Analysis ng sensitivity (Eukaryote)
© Copyright 2003 - 2009 Agilent Technologies, Inc.

Chip Information:

Chip Lot #:
Reagent Kit Lot #:
Chip Comments:



Assay Class: Eukaryote Total RNA Nano
 Data Path: C:\...ents and Settings\Bioanalyzer\2012-02-23\2012-02-23_003.xad

Created: 2/23/2012 3:15:16 PM
 Modified: 2/23/2012 4:02:54 PM

Electrophoresis File Run Summary (Chip Summary)

Sample Name	Sample Comment	Status	Result Label	Result Color
NP13-12		✓	RIN: 3.20	
NP18-16		✓	RIN: 3.40	
P18-12		✓	RIN: 3.20	
NP20-9		✓	RIN: 2.20	
P16-18		✓	RIN:3	
P18-3		✓	RIN: 2.40	
P16-7		✓	RIN: 2.10	
CORE CONTROL		✓	RIN: 2.30	
2H		✓	RIN: 7.70	
H7		✓	RIN: 6.90	
1D		✓	RIN:8	
3D		✓	RIN: 7.90	
Ladder		✓	All Other Samples	

Chip Lot #

Reagent Kit Lot #

Chip Comments :

Assay Class: Eukaryote Total RNA Nano
Data Path: C:\...ents and Settings\Bioanalyzer\2012-02-23\2012-02-23_003.xad

Created: 2/23/2012 3:15:16 PM
Modified: 2/23/2012 4:02:54 PM

Electrophoresis Assay Details

General Analysis Settings

Number of Available Sample and Ladder Wells (Max.) : 13
Minimum Visible Range [s] : 17
Maximum Visible Range [s] : 70
Start Analysis Time Range [s] : 19
End Analysis Time Range [s] : 69
Ladder Concentration [ng/ μ l] : 150
Lower Marker Concentration [ng/ μ l] : 0
Upper Marker Concentration [ng/ μ l] : 0
Used Lower Marker for Quantitation
Standard Curve Fit is Logarithmic
Show Data Aligned to Lower Marker

Integrator Settings

Integration Start Time [s] : 19
Integration End Time [s] : 69
Slope Threshold : 0.6
Height Threshold [FU] : 0.5
Area Threshold : 0.2
Width Threshold [s] : 0.5
Baseline Plateau [s] : 6

Filter Settings

Filter Width [s] : 0.5
Polynomial Order : 4

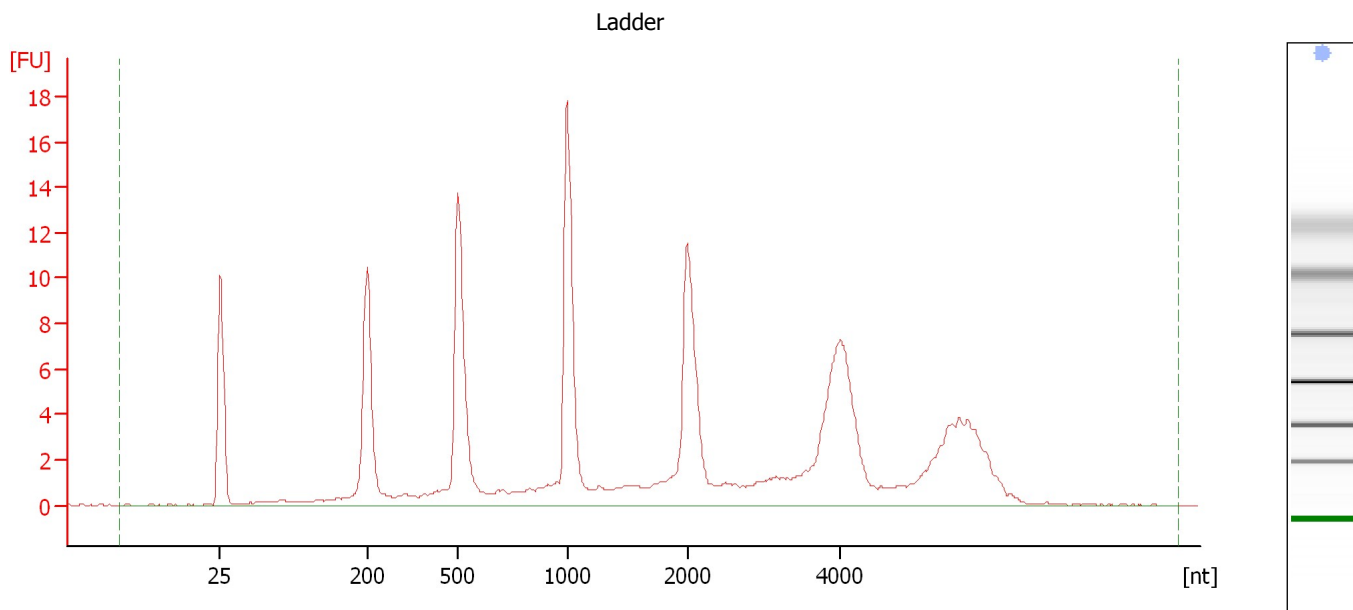
Ladder

Ladder Peak	Size
1	25
2	200
3	500
4	1000
5	2000
6	4000

Assay Class: Eukaryote Total RNA Nano
Data Path: C:\...ents and Settings\Bioanalyzer\2012-02-23\2012-02-23_003.xad

Created: 2/23/2012 3:15:16 PM
Modified: 2/23/2012 4:02:54 PM

Electropherogram Summary



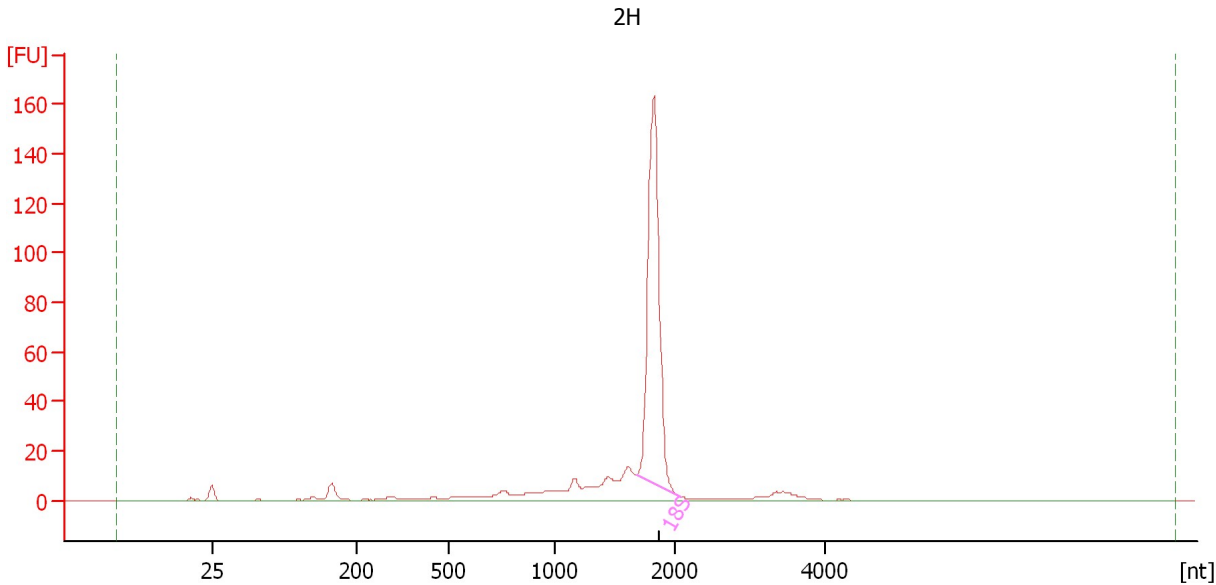
Overall Results for Ladder

RNA Area:	152.2	Result Flagging Color:	
RNA Concentration:	150 ng/μl	Result Flagging Label:	All Other Samples

Assay Class: Eukaryote Total RNA Nano
Data Path: C:\...ents and Settings\Bioanalyzer\2012-02-23\2012-02-23_003.xad

Created: 2/23/2012 3:15:16 PM
Modified: 2/23/2012 4:02:54 PM

Electropherogram Summary Continued ...



Setpoint Deviations for sample 9 : 2H

Height Threshold [FU] : 5

Overall Results for sample 9 : 2H

RNA Area:	391.3	RNA Integrity Number (RIN):	7.7 (B.02.08, Anomaly Threshold(s) manually adapted)
RNA Concentration:	386 ng/μl	Result Flagging Color:	
rRNA Ratio [28s / 18s]:	0.0	Result Flagging Label:	RIN: 7.70

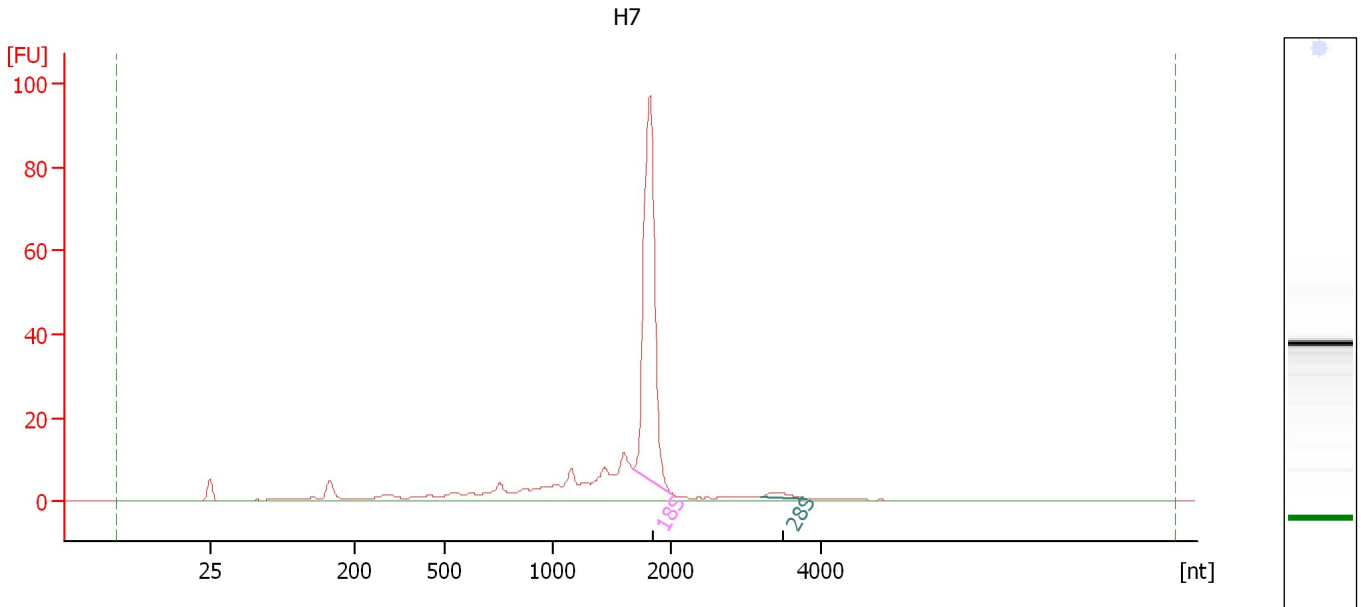
Fragment table for sample 9 : 2H

Name	Start Size [nt]	End Size [nt]	Area	% of total Area
18S	1,679	2,092	217.2	55.5

Assay Class: Eukaryote Total RNA Nano
Data Path: C:\...ents and Settings\Bioanalyzer\2012-02-23\2012-02-23_003.xad

Created: 2/23/2012 3:15:16 PM
Modified: 2/23/2012 4:02:54 PM

Electropherogram Summary Continued ...



Overall Results for sample 10 : H7

RNA Area:	271.1	RNA Integrity Number (RIN):	6.9 (B.02.08, Anomaly Threshold(s) manually adapted)
RNA Concentration:	267 ng/μl	Result Flagging Color:	
rRNA Ratio [28s / 18s]:	0.0	Result Flagging Label:	RIN: 6.90

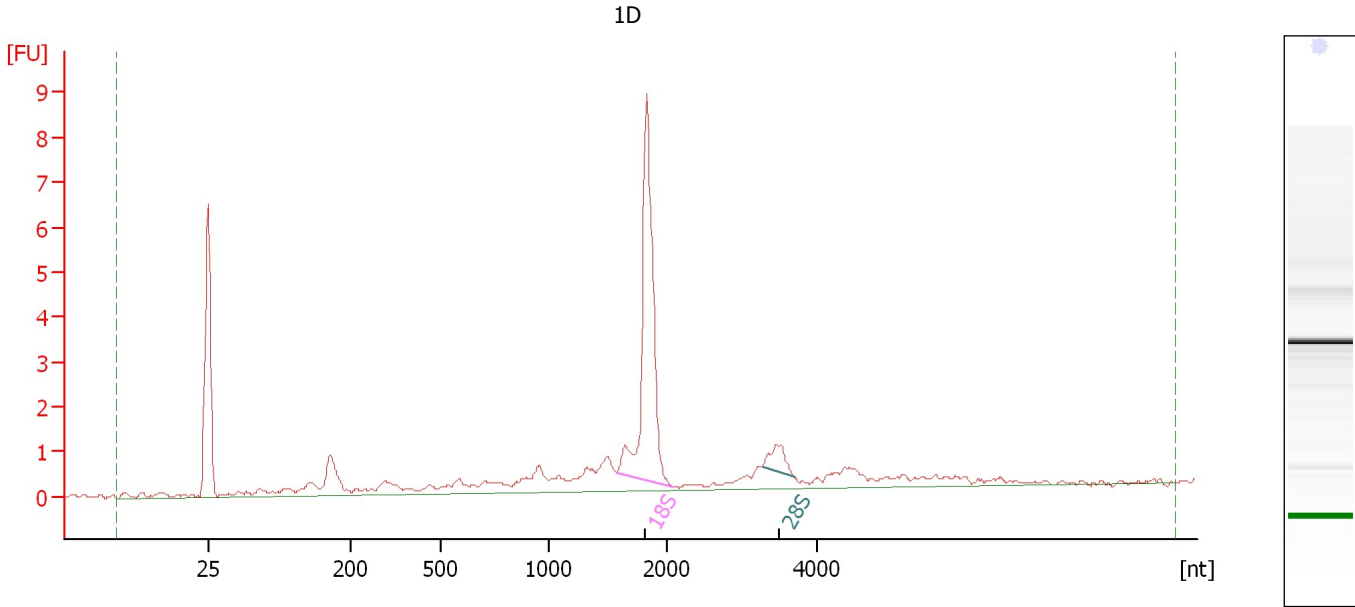
Fragment table for sample 10 : H7

Name	Start Size [nt]	End Size [nt]	Area	% of total Area
18S	1,685	2,047	123.5	45.6
28S	3,196	3,821	2.8	1.0

Assay Class: Eukaryote Total RNA Nano
 Data Path: C:\...ents and Settings\Bioanalyzer\2012-02-23\2012-02-23_003.xad

Created: 2/23/2012 3:15:16 PM
 Modified: 2/23/2012 4:02:54 PM

Electropherogram Summary Continued ...



Overall Results for sample 11 : 1D

RNA Area:	33.6	RNA Integrity Number (RIN):	8 (B.02.08, Anomaly Threshold(s) manually adapted)
RNA Concentration:	33 ng/μl	Result Flagging Color:	
rRNA Ratio [28s / 18s]:	0.1	Result Flagging Label:	RIN:8

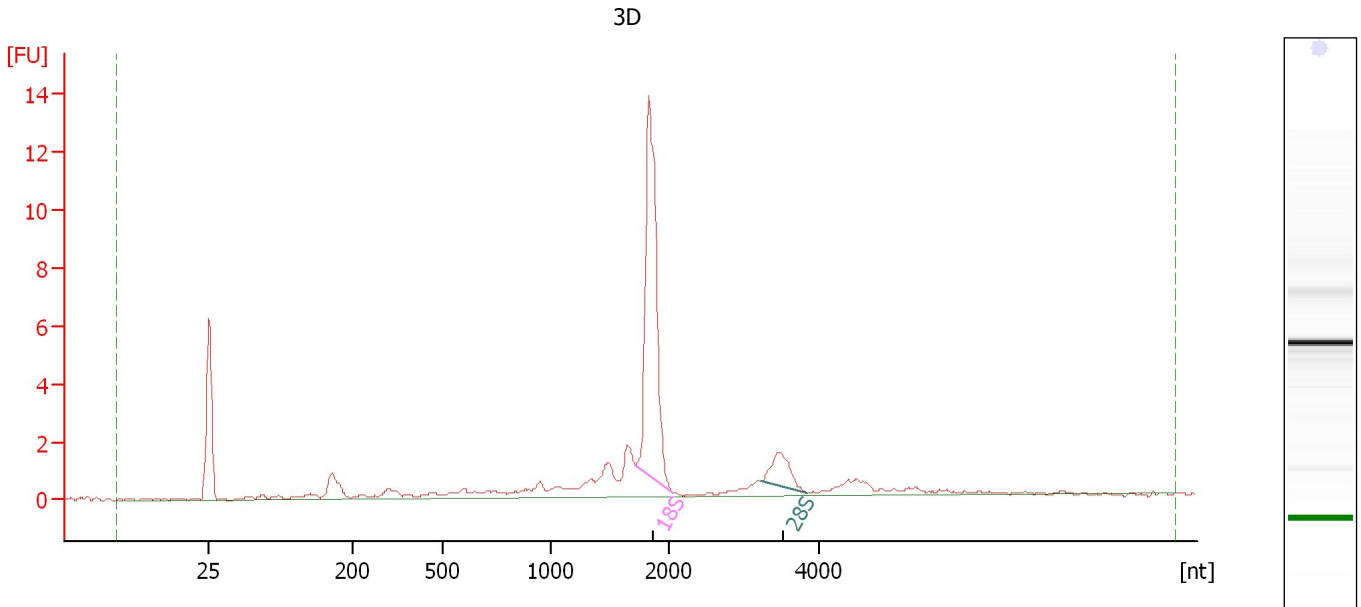
Fragment table for sample 11 : 1D

Name	Start Size [nt]	End Size [nt]	Area	% of total Area
18S	1,573	2,101	11.1	33.0
28S	3,284	3,711	1.0	3.0

Assay Class: Eukaryote Total RNA Nano
Data Path: C:\...ents and Settings\Bioanalyzer\2012-02-23\2012-02-23_003.xad

Created: 2/23/2012 3:15:16 PM
Modified: 2/23/2012 4:02:54 PM

Electropherogram Summary Continued ...



Overall Results for sample 12 : 3D

RNA Area: 42.8 RNA Integrity Number (RIN): 7.9 (B.02.08, Anomaly Threshold(s) manually adapted)
RNA Concentration: 42 ng/μl
rRNA Ratio [28s / 18s]: 0.1
Result Flagging Color:
Result Flagging Label: RIN: 7.90

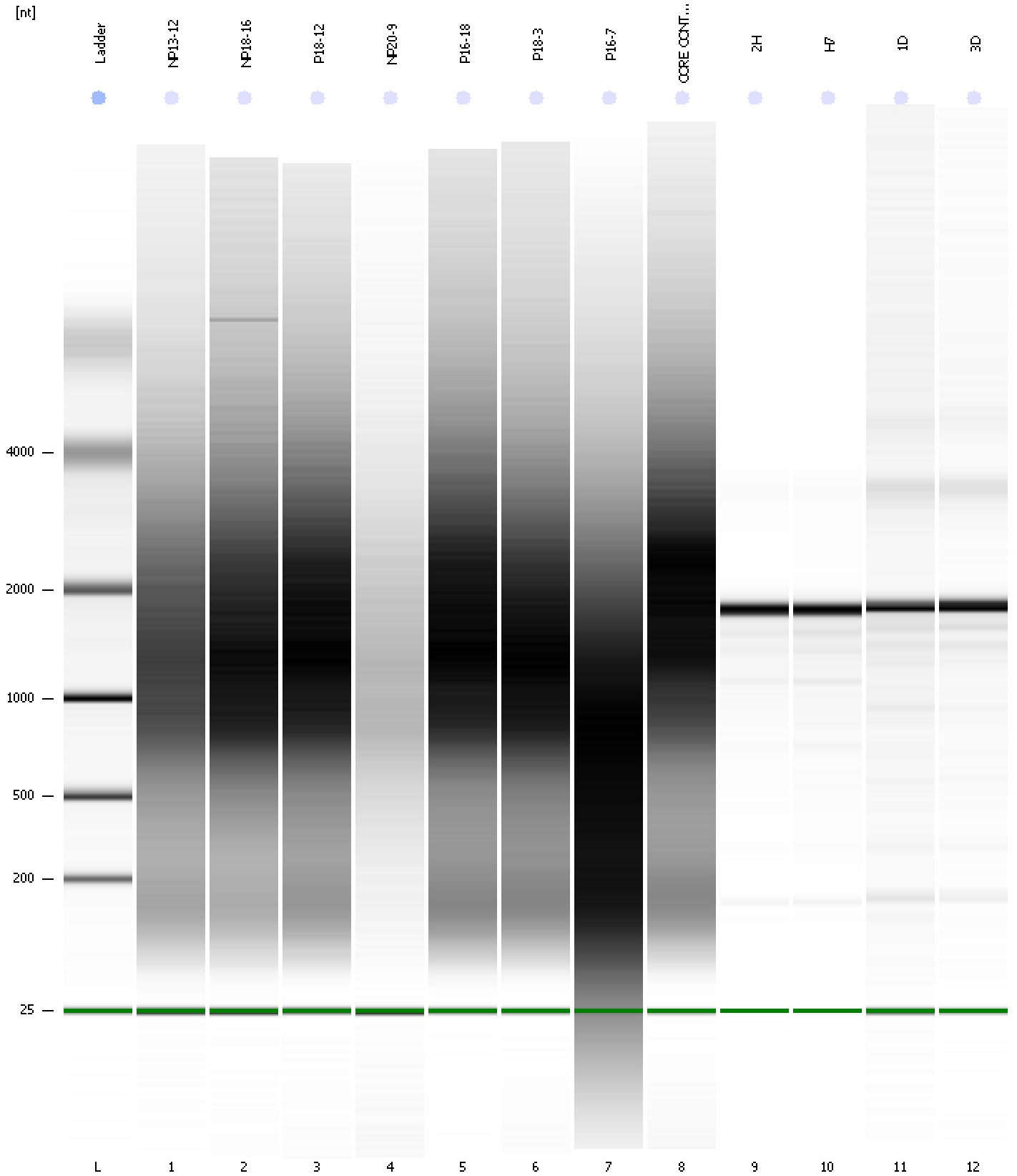
Fragment table for sample 12 : 3D

Name	Start Size [nt]	End Size [nt]	Area	% of total Area
18S	1,720	2,060	17.3	40.5
28S	3,226	3,837	2.4	5.5

Assay Class: Eukaryote Total RNA Nano
Data Path: C:\...ents and Settings\Bioanalyzer\2012-02-23\2012-02-23_003.xad

Created: 2/23/2012 3:15:16 PM
Modified: 2/23/2012 4:02:54 PM

Gel Image

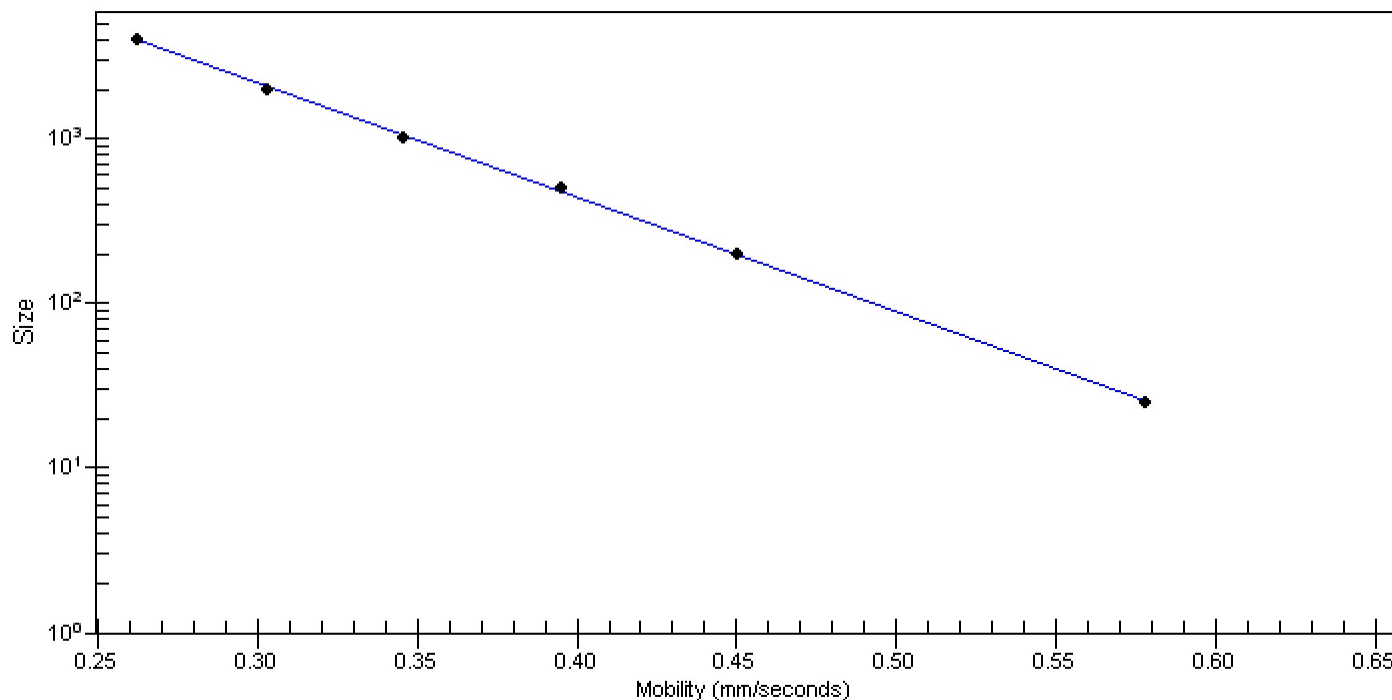


Assay Class: Eukaryote Total RNA Nano
Data Path: C:\...ents and Settings\Bioanalyzer\2012-02-23\2012-02-23_003.xad

Created: 2/23/2012 3:15:16 PM
Modified: 2/23/2012 4:02:54 PM

Curves

Standard Curve



Assay Class: Eukaryote Total RNA Nano
 Data Path: C:\...ents and Settings\Bioanalyzer\2012-02-23\2012-02-23_003.xad

Created: 2/23/2012 3:15:16 PM
 Modified: 2/23/2012 4:02:54 PM

Run Logbook

Description	Number	Source	Category	Sub Category	Time	Time Zone	User	Host
Run ended on port 1 (Number of wells acquired: 13)		Instrument	Run		2/23/2012 3:38:23 PM	(GMT --08:00) Pacific Standard Time	UC Davis	D8XSMGH1
Run started on port 1 (File: C:\Documents and Settings\Bioanalyzer\2012-02-23\2012-02-23_003.xad)		Instrument	Run		2/23/2012 3:15:24 PM	(GMT --08:00) Pacific Standard Time	UC Davis	D8XSMGH1
Product Number : G2938B		Instrument	Run		2/23/2012 3:15:24 PM	(GMT --08:00) Pacific Standard Time	UC Davis	D8XSMGH1
Name :		Instrument	Run		2/23/2012 3:15:24 PM	(GMT --08:00) Pacific Standard Time	UC Davis	D8XSMGH1
Vendor : Agilent Technologies		Instrument	Run		2/23/2012 3:15:24 PM	(GMT --08:00) Pacific Standard Time	UC Davis	D8XSMGH1
Serial# : DE13701086		Instrument	Run		2/23/2012 3:15:24 PM	(GMT --08:00) Pacific Standard Time	UC Davis	D8XSMGH1
Firmware : C.01.069		Instrument	Run		2/23/2012 3:15:24 PM	(GMT --08:00) Pacific Standard Time	UC Davis	D8XSMGH1
Cartridge : Electrode		Instrument	Run		2/23/2012 3:15:24 PM	(GMT --08:00) Pacific Standard Time	UC Davis	D8XSMGH1