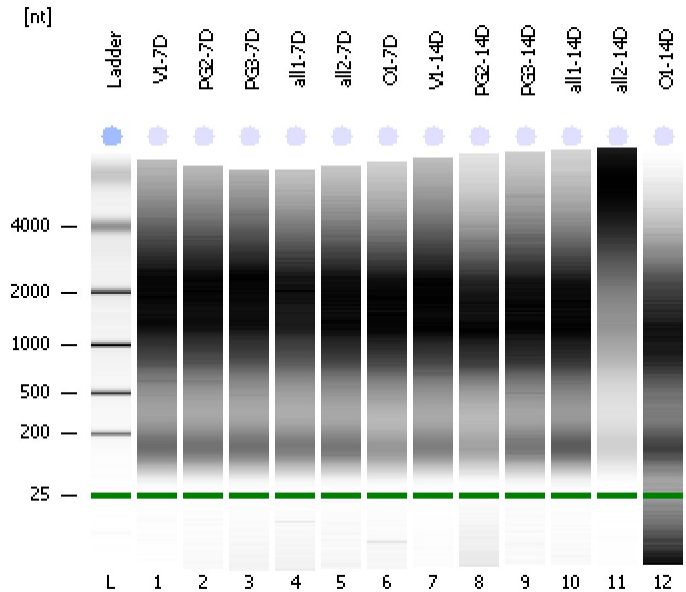


Assay Class: Eukaryote Total RNA Nano  
Data Path: C:\...ents and Settings\Bioanalyzer\2012-02-23\2012-02-23\_004.xad

Created: 2/23/2012 4:31:28 PM  
Modified: 2/23/2012 4:57:39 PM

Electrophoresis File Run Summary



Instrument Information:

Instrument Name: DE13701086      Firmware: C.01.069  
Serial#: DE13701086      Type: G2938B

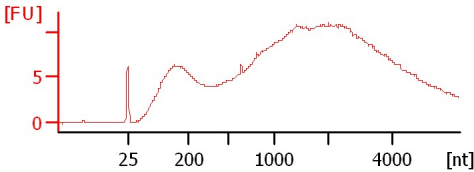
Assay Information:

Assay Origin Path: C:\Program Files\Agilent\2100 bioanalyzer\2100 expert\assays\RNA\Eukaryote Total RNA Nano Series II.xsy  
Assay Class: Eukaryote Total RNA Nano  
Version: 2.6  
Assay Comments: Total RNA Analysis ng sensitivity (Eukaryote)  
© Copyright 2003 - 2009 Agilent Technologies, Inc.

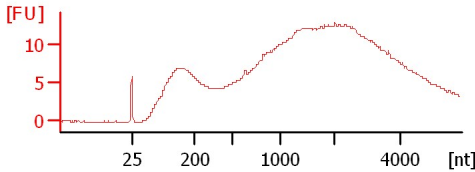
Chip Information:

Chip Lot #:   
Reagent Kit Lot #:   
Chip Comments:

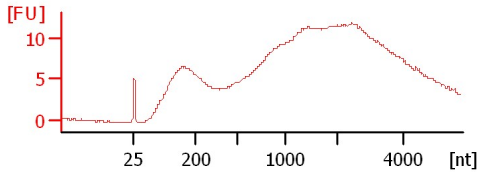
**V1-7D**  
RIN: 2.40



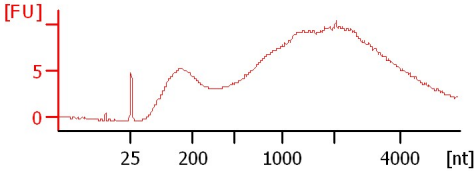
**PG2-7D**  
RIN: 2.30



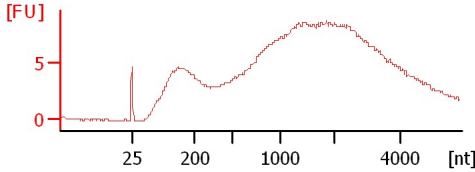
**PG3-7D**  
RIN: 2.40



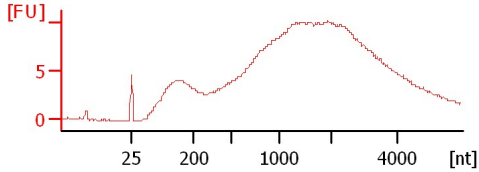
**all1-7D**  
RIN: 2.20



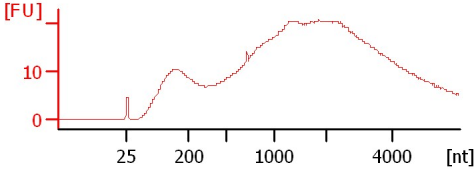
**all2-7D**  
RIN: 2.30



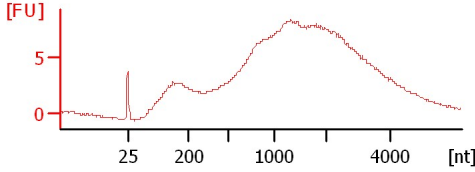
**O1-7D**  
RIN: 1.70



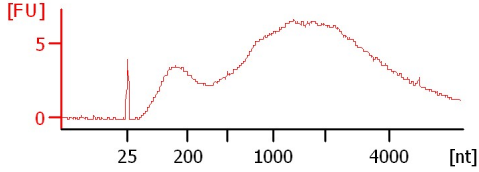
**V1-14D**  
RIN: 2.60



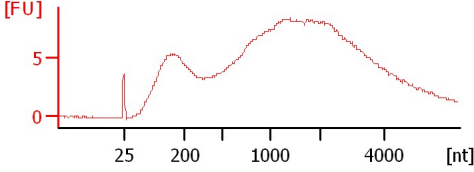
**PG2-14D**  
RIN: 3.20



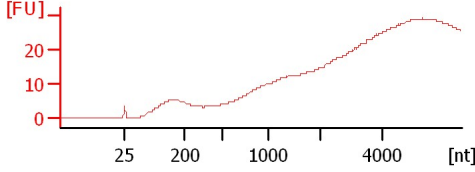
**PG3-14D**  
RIN: 1.80



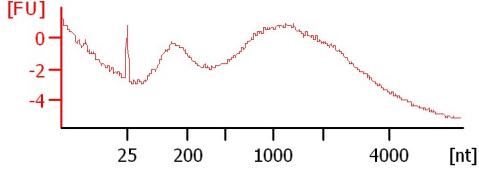
**all1-14D**  
RIN: 2.10



**all2-14D**  
RIN: 4.30



**O1-14D**  
RIN: 2.40



Assay Class: Eukaryote Total RNA Nano  
Data Path: C:\...ents and Settings\Bioanalyzer\2012-02-23\2012-02-23\_004.xad

Created: 2/23/2012 4:31:28 PM  
Modified: 2/23/2012 4:57:39 PM

**Electrophoresis File Run Summary (Chip Summary)**

Sample Name	Sample Comment	Status	Result Label	Result Color
V1-7D		✓	RIN: 2.40	
PG2-7D		✓	RIN: 2.30	
PG3-7D		✓	RIN: 2.40	
all1-7D		✓	RIN: 2.20	
all2-7D		✓	RIN: 2.30	
O1-7D		✓	RIN: 1.70	
V1-14D		✓	RIN: 2.60	
PG2-14D		✓	RIN: 3.20	
PG3-14D		✓	RIN: 1.80	
all1-14D		✓	RIN: 2.10	
all2-14D		✓	RIN: 4.30	
O1-14D		✓	RIN: 2.40	
Ladder		✓	All Other Samples	

**Chip Lot #**

**Reagent Kit Lot #**

**Chip Comments :**

Assay Class: Eukaryote Total RNA Nano  
Data Path: C:\...ents and Settings\Bioanalyzer\2012-02-23\2012-02-23\_004.xad

Created: 2/23/2012 4:31:28 PM  
Modified: 2/23/2012 4:57:39 PM

## Electrophoresis Assay Details

### General Analysis Settings

Number of Available Sample and Ladder Wells (Max.) : 13  
Minimum Visible Range [s] : 17  
Maximum Visible Range [s] : 70  
Start Analysis Time Range [s] : 19  
End Analysis Time Range [s] : 69  
Ladder Concentration [ng/ $\mu$ l] : 150  
Lower Marker Concentration [ng/ $\mu$ l] : 0  
Upper Marker Concentration [ng/ $\mu$ l] : 0  
Used Lower Marker for Quantitation  
Standard Curve Fit is Logarithmic  
Show Data Aligned to Lower Marker

### Integrator Settings

Integration Start Time [s] : 19  
Integration End Time [s] : 69  
Slope Threshold : 0.6  
Height Threshold [FU] : 0.5  
Area Threshold : 0.2  
Width Threshold [s] : 0.5  
Baseline Plateau [s] : 6

### Filter Settings

Filter Width [s] : 0.5  
Polynomial Order : 4

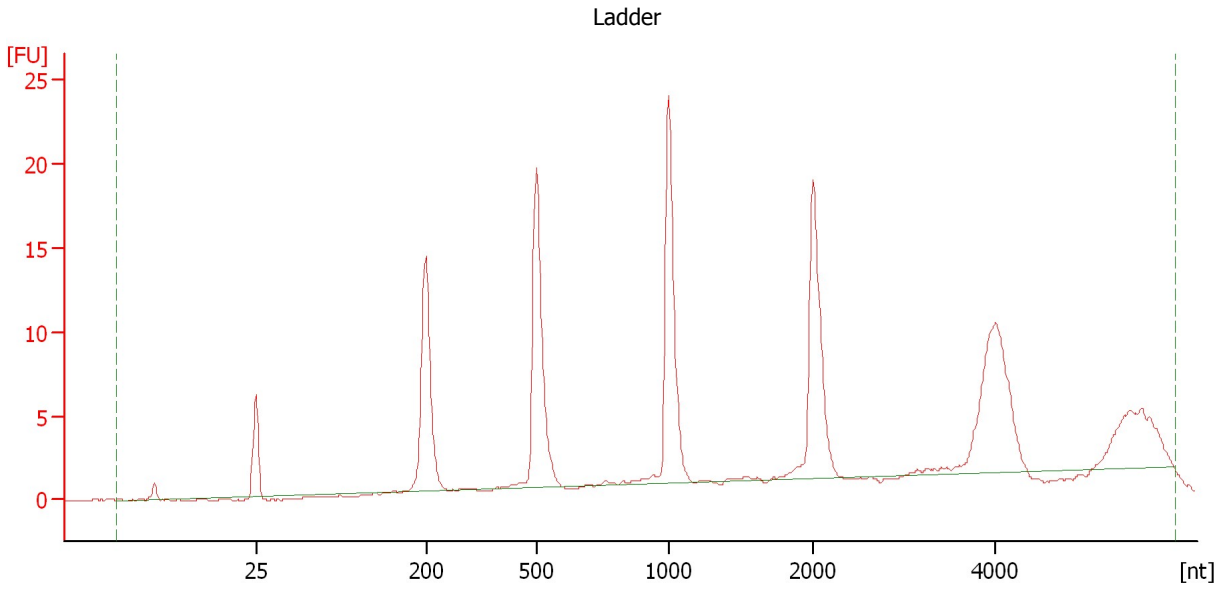
### Ladder

Ladder Peak	Size
1	25
2	200
3	500
4	1000
5	2000
6	4000

Assay Class: Eukaryote Total RNA Nano  
Data Path: C:\...ents and Settings\Bioanalyzer\2012-02-23\2012-02-23\_004.xad

Created: 2/23/2012 4:31:28 PM  
Modified: 2/23/2012 4:57:39 PM

**Electropherogram Summary**



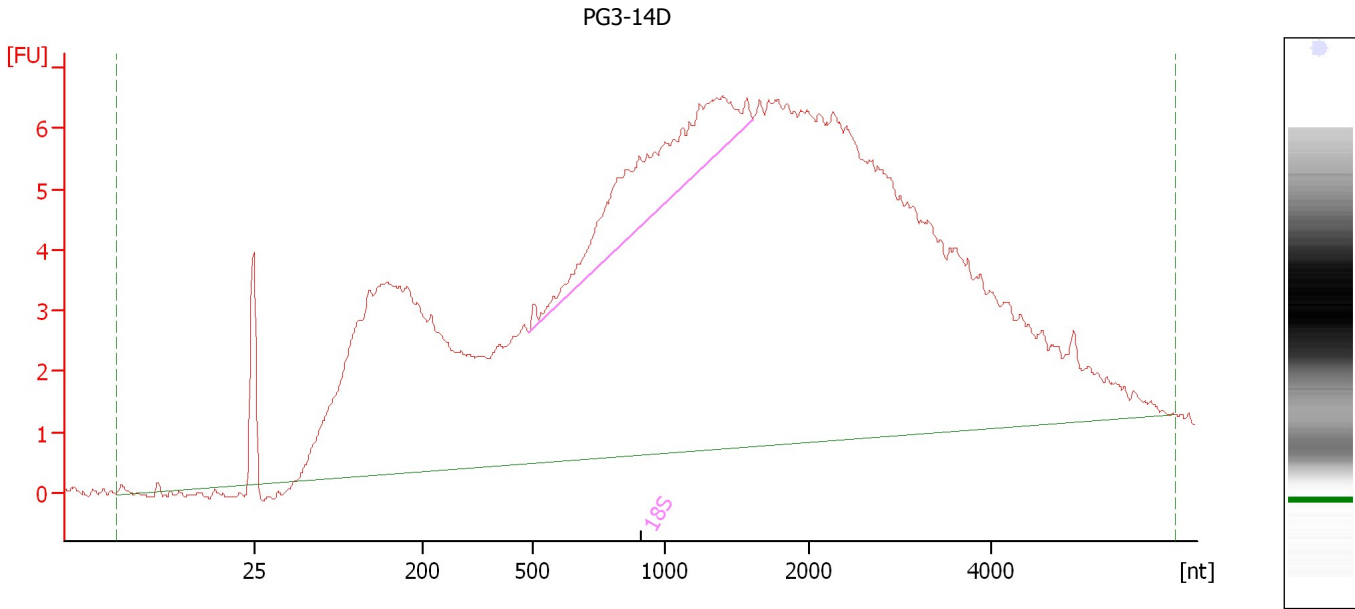
**Overall Results for Ladder**

RNA Area:	126.5	Result Flagging Color:	<span style="background-color: #add8e6; border: 1px solid black; display: inline-block; width: 20px; height: 10px;"></span>
RNA Concentration:	150 ng/ $\mu$ l	Result Flagging Label:	All Other Samples

Assay Class: Eukaryote Total RNA Nano  
Data Path: C:\...ents and Settings\Bioanalyzer\2012-02-23\2012-02-23\_004.xad

Created: 2/23/2012 4:31:28 PM  
Modified: 2/23/2012 4:57:39 PM

**Electropherogram Summary Continued ...**



**Setpoint Deviations for sample 9 : PG3-14D**

Width Threshold [s] : 0.01

**Overall Results for sample 9 : PG3-14D**

RNA Area: 274.1 RNA Integrity Number (RIN): 1.8 (B.02.08, Anomaly Threshold(s) manually adapted)

RNA Concentration: 325 ng/μl

rRNA Ratio [28s / 18s]: 0.0

Result Flagging Color:

Result Flagging Label: RIN: 1.80

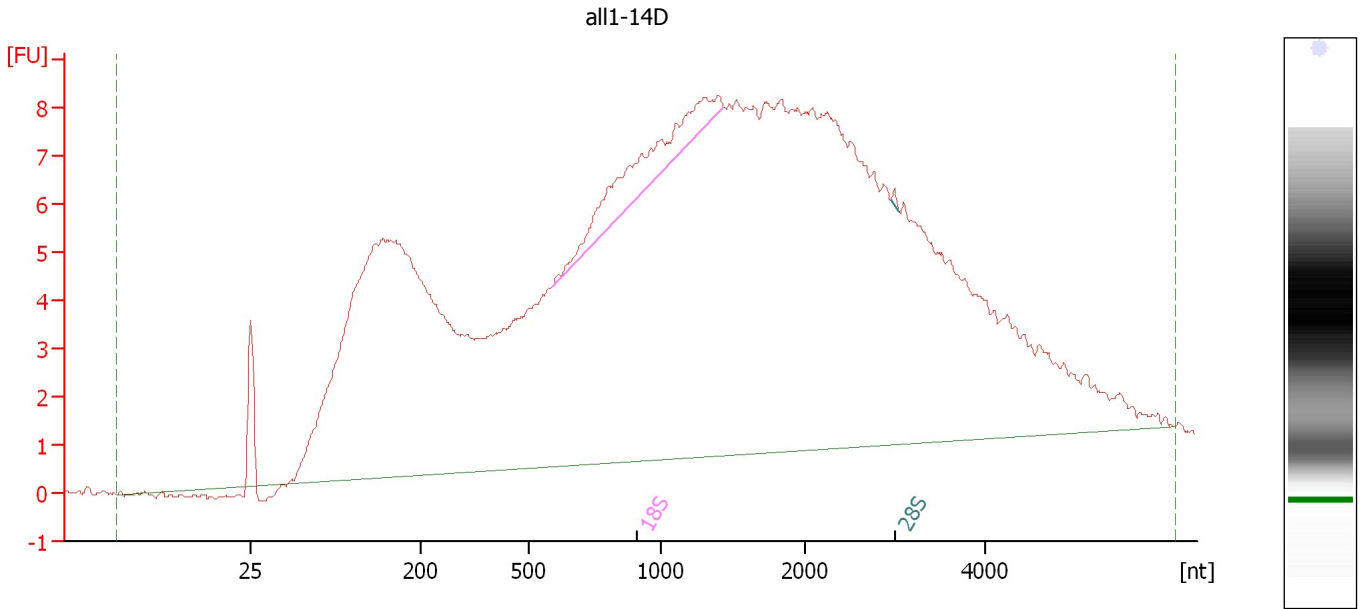
**Fragment table for sample 9 : PG3-14D**

Name	Start Size [nt]	End Size [nt]	Area	% of total Area
18S	491	1,608	16.2	5.9

Assay Class: Eukaryote Total RNA Nano  
 Data Path: C:\...ents and Settings\Bioanalyzer\2012-02-23\2012-02-23\_004.xad

Created: 2/23/2012 4:31:28 PM  
 Modified: 2/23/2012 4:57:39 PM

**Electropherogram Summary Continued ...**



**Setpoint Deviations for sample 10 : all1-14D**

Width Threshold [s] : 0.01

**Overall Results for sample 10 : all1-14D**

RNA Area:	372.4	RNA Integrity Number (RIN):	2.1 (B.02.08, Anomaly Threshold(s) manually adapted)
RNA Concentration:	442 ng/μl	Result Flagging Color:	<span style="border: 1px solid black; display: inline-block; width: 20px; height: 10px; background-color: #ccccff;"></span>
rRNA Ratio [28s / 18s]:	0.0	Result Flagging Label:	RIN: 2.10

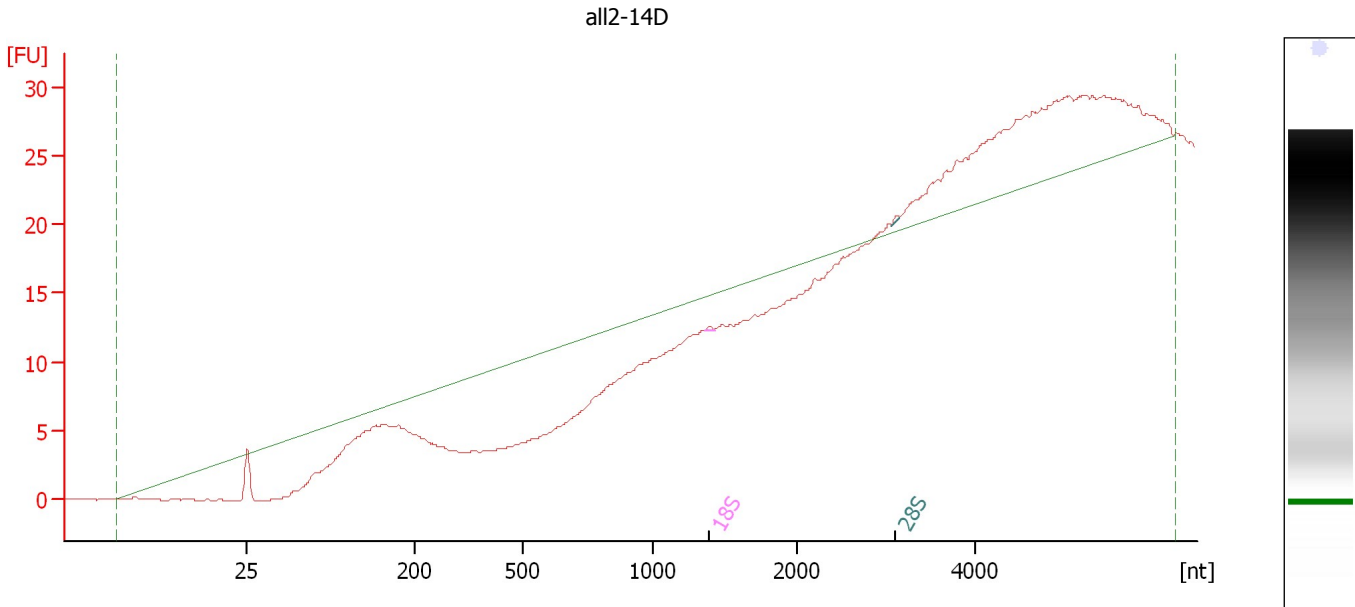
**Fragment table for sample 10 : all1-14D**

Name	Start Size [nt]	End Size [nt]	Area	% of total Area
18S	589	1,436	9.4	2.5
28S	2,948	3,031	0.1	0.0

Assay Class: Eukaryote Total RNA Nano  
Data Path: C:\...ents and Settings\Bioanalyzer\2012-02-23\2012-02-23\_004.xad

Created: 2/23/2012 4:31:28 PM  
Modified: 2/23/2012 4:57:39 PM

**Electropherogram Summary Continued ...**



**Setpoint Deviations for sample 11 : all2-14D**

Width Threshold [s] : 0.01

**Overall Results for sample 11 : all2-14D**

RNA Area: 77.0      RNA Integrity Number (RIN): 4.3 (B.02.08, Anomaly Threshold(s) manually adapted)  
RNA Concentration: 91 ng/μl  
rRNA Ratio [28s / 18s]: 0.6  
Result Flagging Color:   
Result Flagging Label: RIN: 4.30

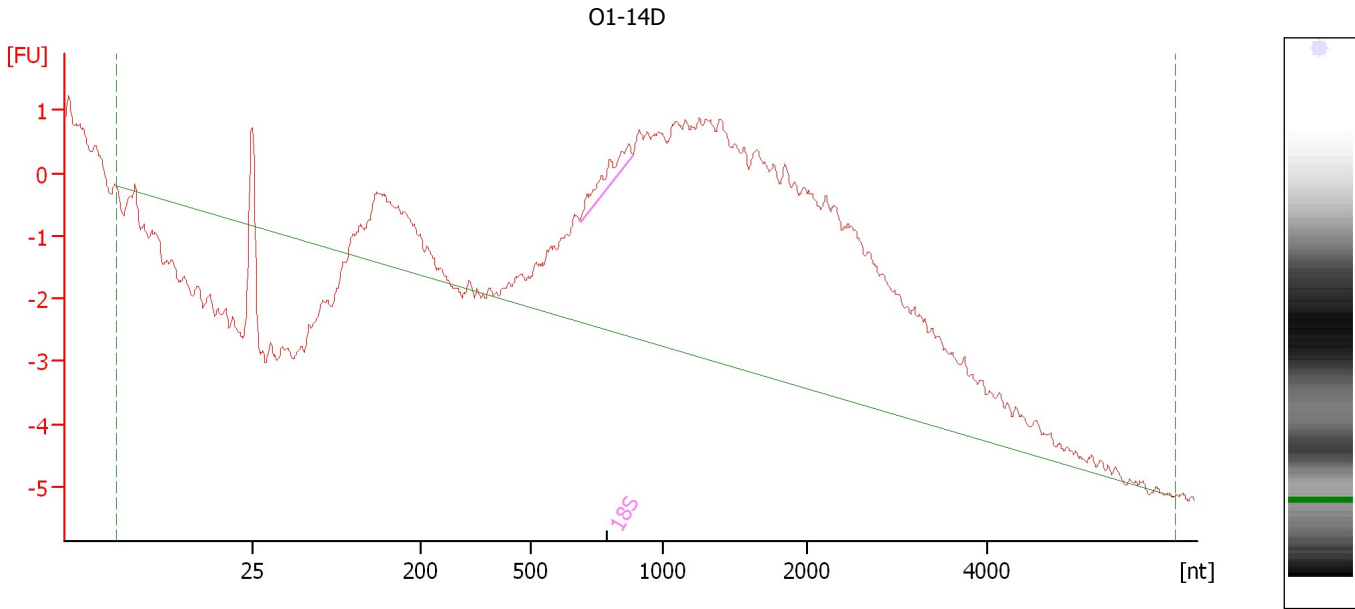
**Fragment table for sample 11 : all2-14D**

Name	Start Size [nt]	End Size [nt]	Area	% of total Area
18S	1,365	1,425	0.2	0.2
28S	3,063	3,147	0.1	0.1

Assay Class: Eukaryote Total RNA Nano  
 Data Path: C:\...ents and Settings\Bioanalyzer\2012-02-23\2012-02-23\_004.xad

Created: 2/23/2012 4:31:28 PM  
 Modified: 2/23/2012 4:57:39 PM

**Electropherogram Summary Continued ...**



**Setpoint Deviations for sample 12 : O1-14D**

Width Threshold [s] : 0.01

**Overall Results for sample 12 : O1-14D**

RNA Area:	125.0	RNA Integrity Number (RIN):	2.4 (B.02.08, Anomaly Threshold(s) manually adapted)
RNA Concentration:	148 ng/μl	Result Flagging Color:	<span style="border: 1px solid black; display: inline-block; width: 20px; height: 10px; background-color: #ccccff;"></span>
rRNA Ratio [28s / 18s]:	0.0	Result Flagging Label:	RIN: 2.40

**Fragment table for sample 12 : O1-14D**

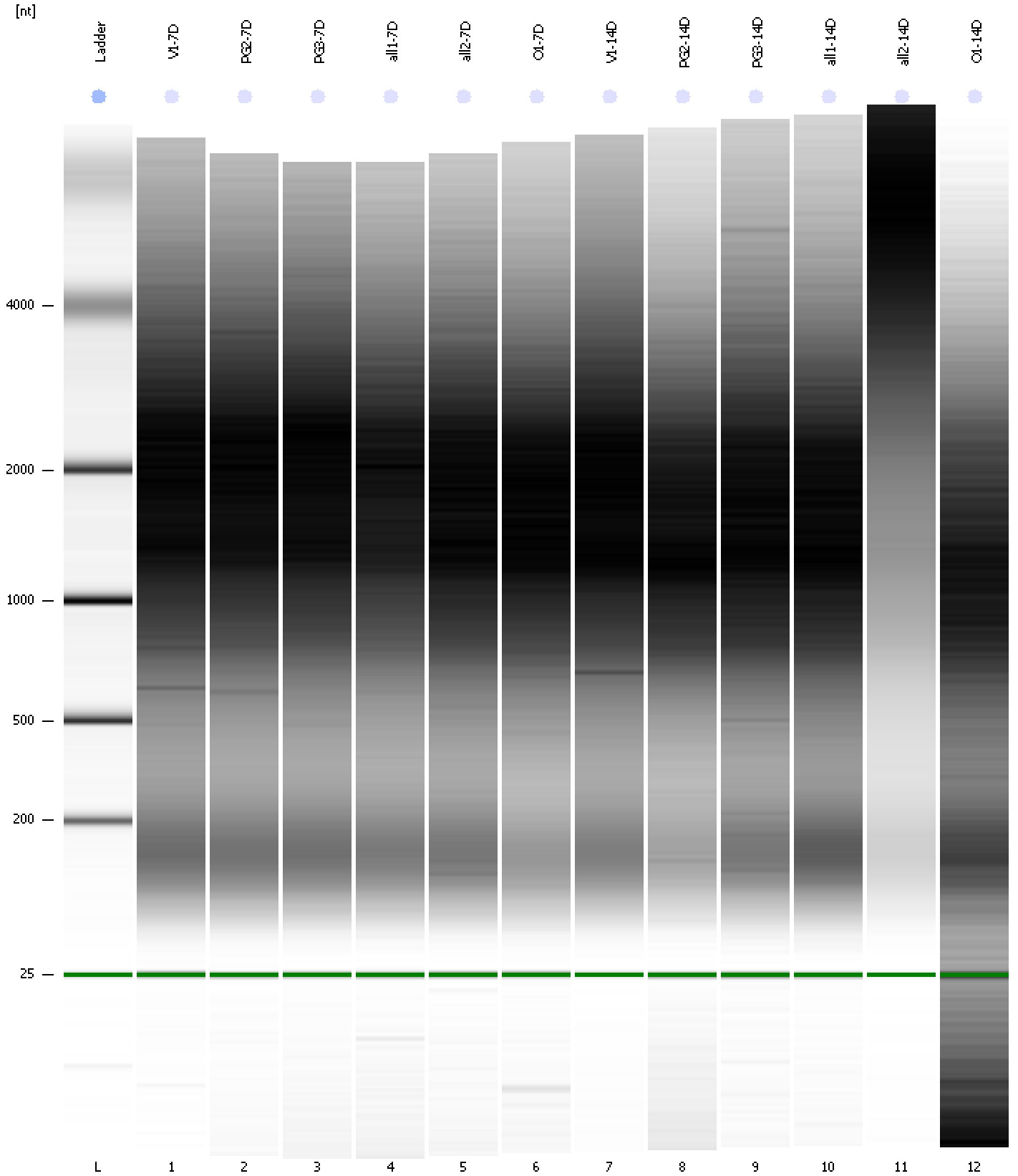
Name	Start Size [nt]	End Size [nt]	Area	% of total Area
18S	688	884	1.3	1.0



Assay Class: Eukaryote Total RNA Nano  
Data Path: C:\...ents and Settings\Bioanalyzer\2012-02-23\2012-02-23\_004.xad

Created: 2/23/2012 4:31:28 PM  
Modified: 2/23/2012 4:57:39 PM

**Gel Image**

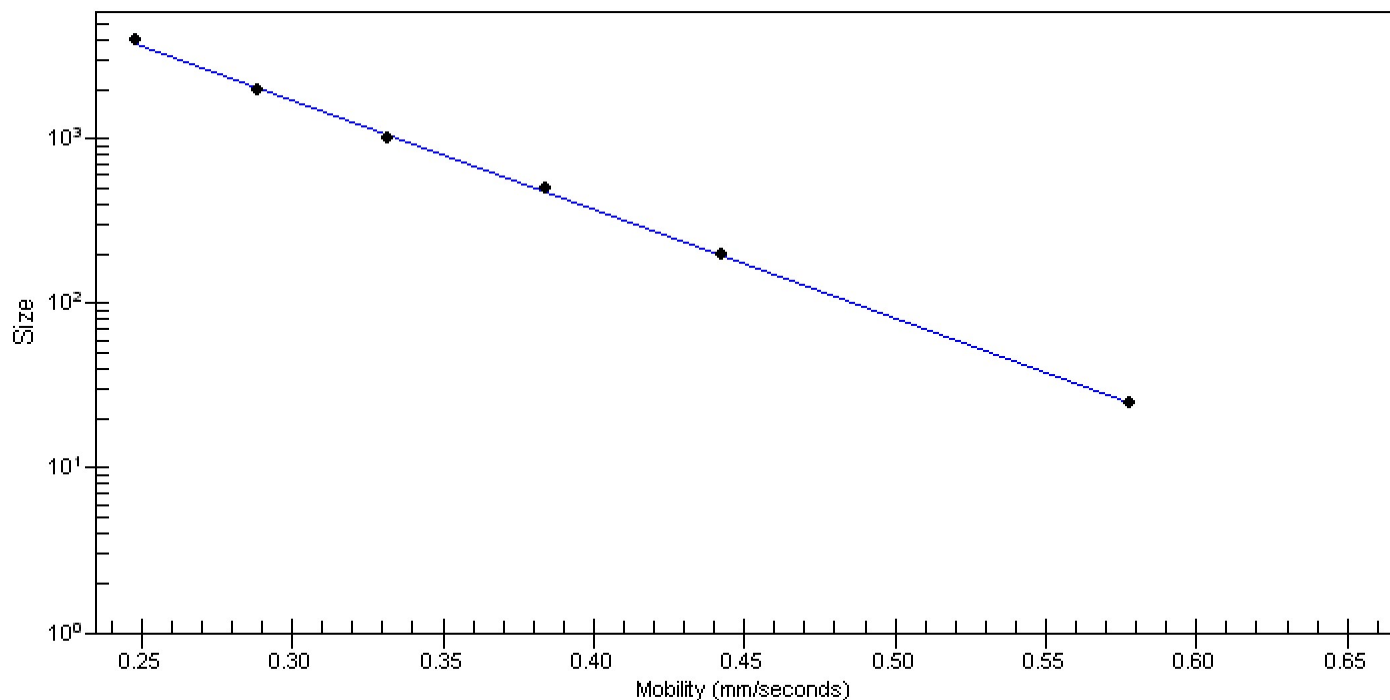


Assay Class: Eukaryote Total RNA Nano  
Data Path: C:\...ents and Settings\Bioanalyzer\2012-02-23\2012-02-23\_004.xad

Created: 2/23/2012 4:31:28 PM  
Modified: 2/23/2012 4:57:39 PM

**Curves**

**Standard Curve**



Assay Class: Eukaryote Total RNA Nano  
 Data Path: C:\...ents and Settings\Bioanalyzer\2012-02-23\2012-02-23\_004.xad

Created: 2/23/2012 4:31:28 PM  
 Modified: 2/23/2012 4:57:39 PM

**Run Logbook**

Description	Number	Source	Category	Sub Category	Time	Time Zone	User	Host
Run ended on port 1 (Number of wells acquired: 13)		Instrument	Run		2/23/2012 4:54:33 PM	(GMT --08:00) Pacific Standard Time	UC Davis	D8XSMGH1
Run started on port 1 (File: C:\Documents and Settings\Bioanalyzer\2012-02-23\2012-02-23_004.xad)		Instrument	Run		2/23/2012 4:31:34 PM	(GMT --08:00) Pacific Standard Time	UC Davis	D8XSMGH1
Product Number : G2938B		Instrument	Run		2/23/2012 4:31:34 PM	(GMT --08:00) Pacific Standard Time	UC Davis	D8XSMGH1
Name :		Instrument	Run		2/23/2012 4:31:34 PM	(GMT --08:00) Pacific Standard Time	UC Davis	D8XSMGH1
Vendor : Agilent Technologies		Instrument	Run		2/23/2012 4:31:34 PM	(GMT --08:00) Pacific Standard Time	UC Davis	D8XSMGH1
Serial# : DE13701086		Instrument	Run		2/23/2012 4:31:34 PM	(GMT --08:00) Pacific Standard Time	UC Davis	D8XSMGH1
Firmware : C.01.069		Instrument	Run		2/23/2012 4:31:34 PM	(GMT --08:00) Pacific Standard Time	UC Davis	D8XSMGH1
Cartridge : Electrode		Instrument	Run		2/23/2012 4:31:34 PM	(GMT --08:00) Pacific Standard Time	UC Davis	D8XSMGH1