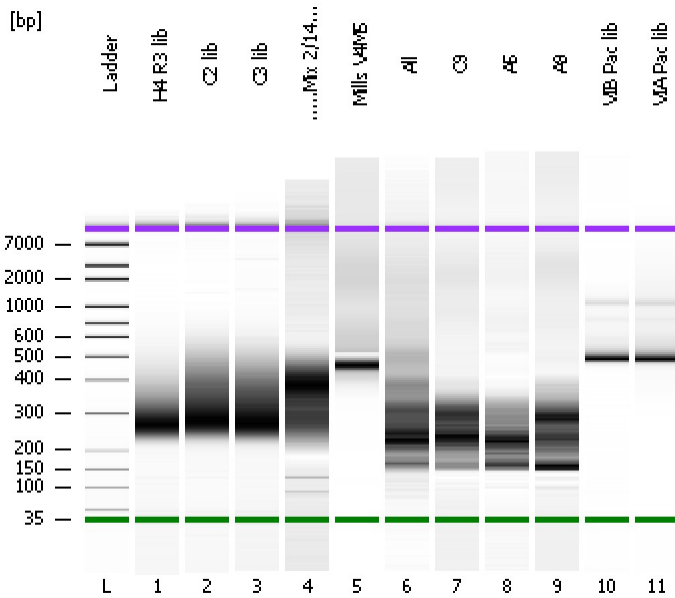


Assay Class: High Sensitivity DNA Assay
Data Path: C:\...ents and Settings\Bioanalyzer\2012-02-24\2012-02-24_001.xad

Created: 2/24/2012 9:57:05 AM
Modified: 2/24/2012 10:45:31 AM

Electrophoresis File Run Summary



Instrument Information:

Instrument Name: DE13701086 Firmware: C.01.069
Serial#: DE13701086 Type: G2938B

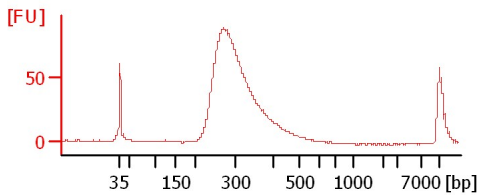
Assay Information:

Assay Origin Path: C:\Program Files\Agilent\2100 bioanalyzer\2100 expert\assays\dsDNA\High Sensitivity DNA.xsy
Assay Class: High Sensitivity DNA Assay
Version: 1.03
Assay Comments: Copyright © 2003-2010 Agilent Technologies

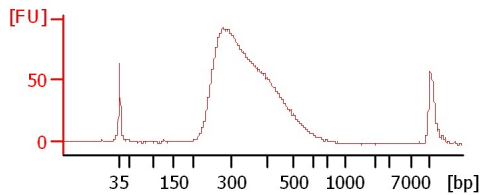
Chip Information:

Chip Lot #:
Reagent Kit Lot #:
Chip Comments:

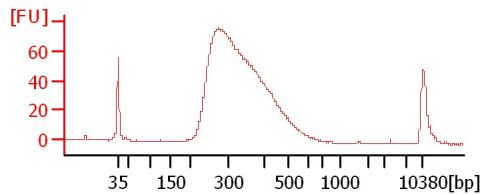
H4 R3 lib



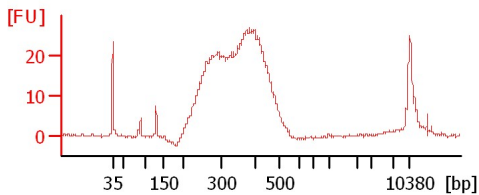
C2 lib



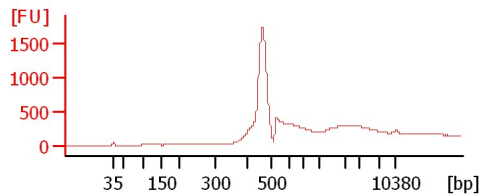
C3 lib



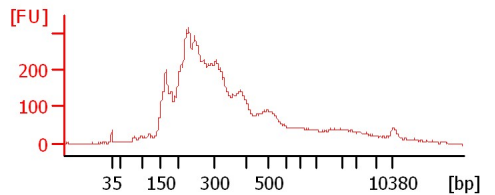
....Mix 2/14/11



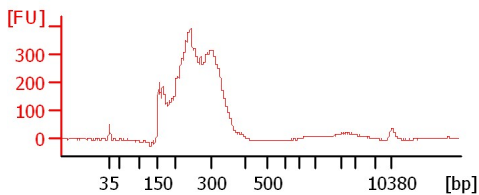
Mills V4M5



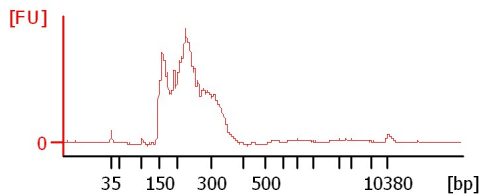
All



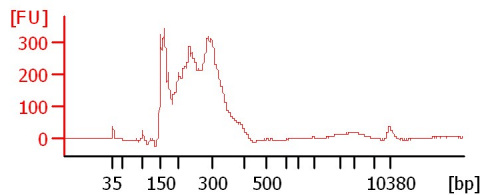
C9



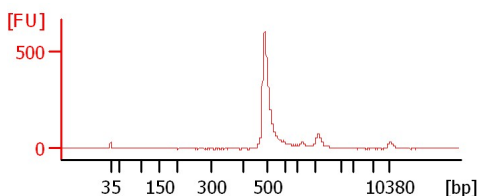
A5



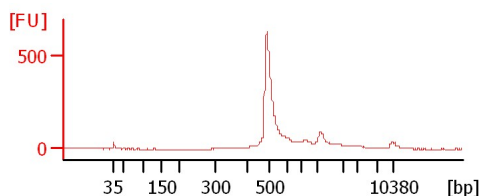
A9



VIB Pac lib



VIA Pac lib



Assay Class: High Sensitivity DNA Assay
 Data Path: C:\...ents and Settings\Bioanalyzer\2012-02-24\2012-02-24_001.xad

Created: 2/24/2012 9:57:05 AM
 Modified: 2/24/2012 10:45:31 AM

Electrophoresis File Run Summary (Chip Summary)

Sample Name	Sample Comment	Rest. Digest	Status	Observation	Result Label	Result Color
H4 R3 lib		<input type="checkbox"/>	✓			
C2 lib		<input type="checkbox"/>	✓			
C3 lib		<input type="checkbox"/>	✓			
.....Mix 2/14/11		<input type="checkbox"/>	✓			
Mills V4M5		<input type="checkbox"/>	✓			
All		<input type="checkbox"/>	✓			
C9		<input type="checkbox"/>	✓			
A5		<input type="checkbox"/>	✓			
A9		<input type="checkbox"/>	✓			
VIB Pac lib		<input type="checkbox"/>	✓			
VIA Pac lib		<input type="checkbox"/>	✓			
Ladder		<input type="checkbox"/>	✓			

Chip Lot #

Reagent Kit Lot #

Chip Comments :

Assay Class: High Sensitivity DNA Assay
Data Path: C:\...ents and Settings\Bioanalyzer\2012-02-24\2012-02-24_001.xad

Created: 2/24/2012 9:57:05 AM
Modified: 2/24/2012 10:45:31 AM

Electrophoresis Assay Details

General Analysis Settings

Number of Available Sample and Ladder Wells (Max.) : 12
Minimum Visible Range [s] : 32
Maximum Visible Range [s] : 138
Start Analysis Time Range [s] : 33
End Analysis Time Range [s] : 137.5
Ladder Concentration [pg/μl] : 1950
Uses Standard Area for Ladder Fragments
Lower Marker Concentration [pg/μl] : 125
Upper Marker Concentration [pg/μl] : 75
Used Upper Marker for Quantitation
Standard Curve Fit is Point to Point
Show Data Aligned to Lower and Upper Marker

Integrator Settings

Integration Start Time [s] : 33.05
Integration End Time [s] : 137
Slope Threshold : 0.8
Height Threshold [FU] : 5
Area Threshold : 0.1
Width Threshold [s] : 0.6
Baseline Plateau [s] : 0.5

Filter Settings

Filter Width [s] : 0.5
Polynomial Order : 4

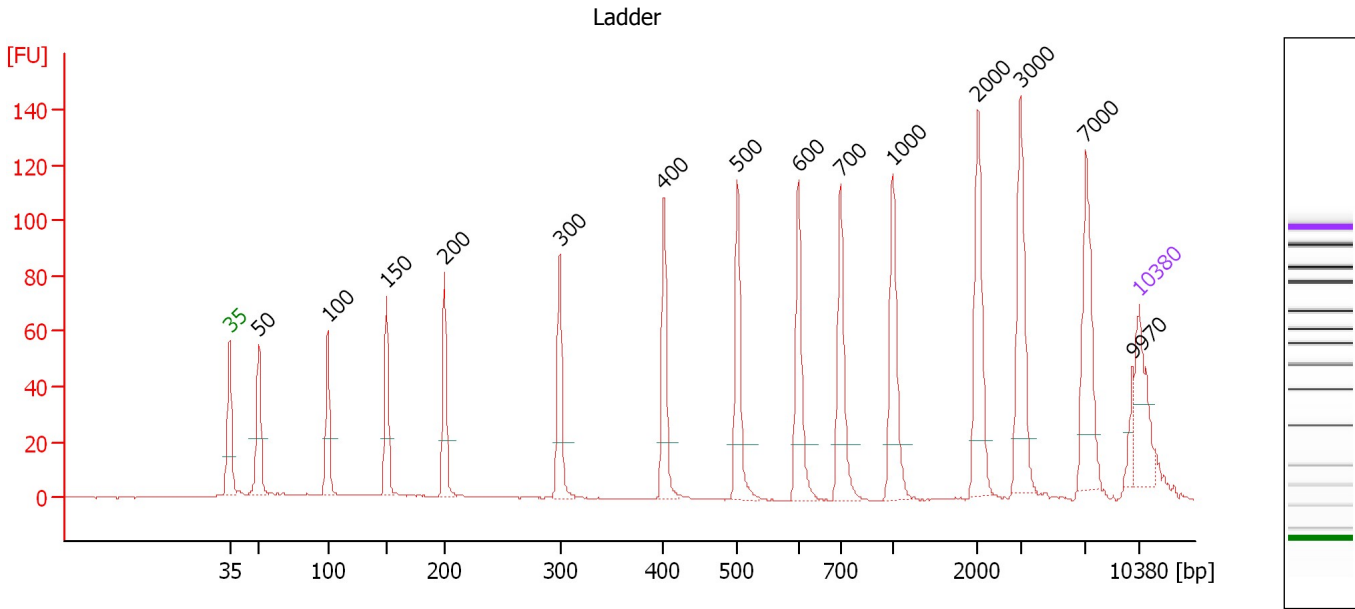
Ladder

Ladder Peak	Size	Area
1	35	160
2	50	210
3	100	208
4	150	221
5	200	242
6	300	270
7	400	305
8	500	306
9	600	336
10	700	321
11	1000	366
12	2000	413
13	3000	411
14	7000	400
15	10380	214

Assay Class: High Sensitivity DNA Assay
 Data Path: C:\...ents and Settings\Bioanalyzer\2012-02-24\2012-02-24_001.xad

Created: 2/24/2012 9:57:05 AM
 Modified: 2/24/2012 10:45:31 AM

Electropherogram Summary



Overall Results for Ladder

Noise: 0.2

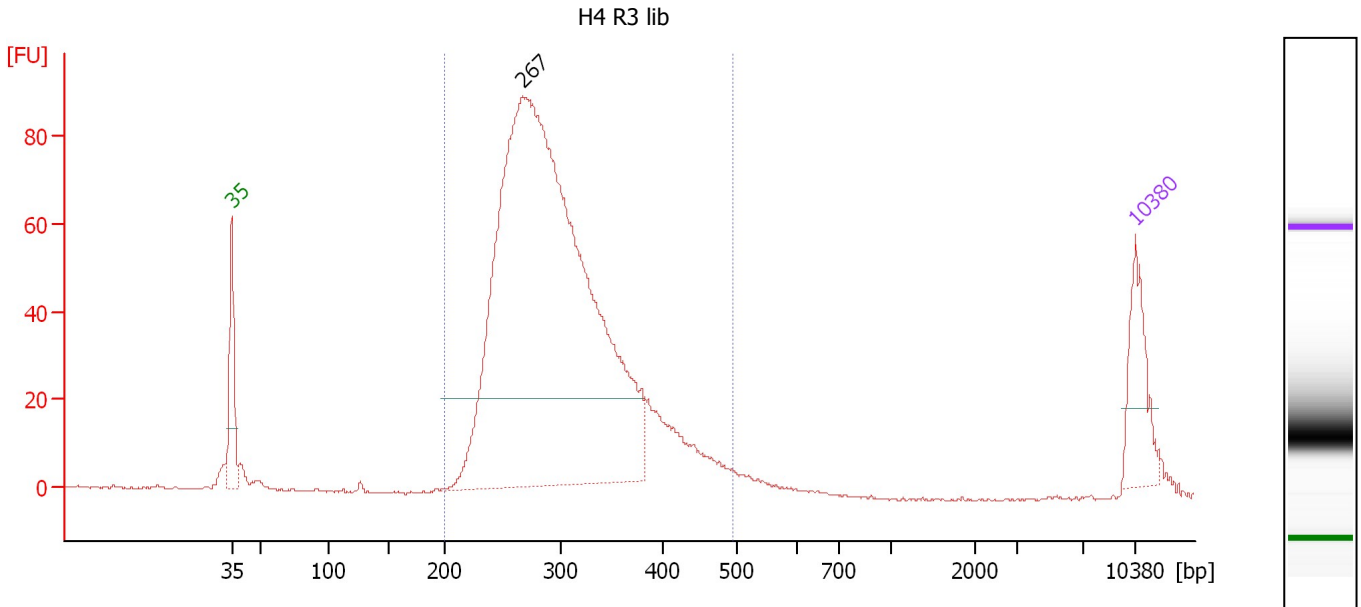
Peak table for Ladder

Peak	Size [bp]	Conc. [pg/µl]	Molarity [pmol/l]	Observations
1	35	125.00	5,411.3	Lower Marker
2	50	150.00	4,545.5	Ladder Peak
3	100	150.00	2,272.7	Ladder Peak
4	150	150.00	1,515.2	Ladder Peak
5	200	150.00	1,136.4	Ladder Peak
6	300	150.00	757.6	Ladder Peak
7	400	150.00	568.2	Ladder Peak
8	500	150.00	454.5	Ladder Peak
9	600	150.00	378.8	Ladder Peak
10	700	150.00	324.7	Ladder Peak
11	1,000	150.00	227.3	Ladder Peak
12	2,000	150.00	113.6	Ladder Peak
13	3,000	150.00	75.8	Ladder Peak
14	7,000	150.00	32.5	Ladder Peak
15	9,970	0.00	0.0	
16	10,380	75.00	10.9	Upper Marker

Assay Class: High Sensitivity DNA Assay
 Data Path: C:\...ents and Settings\Bioanalyzer\2012-02-24\2012-02-24_001.xad

Created: 2/24/2012 9:57:05 AM
 Modified: 2/24/2012 10:45:31 AM

Electropherogram Summary Continued ...



Setpoint Deviations for sample 1 : H4 R3 lib

Height Threshold [FU] : 20

Overall Results for sample 1 : H4 R3 lib

Number of peaks found: 1 Corr. Area 1: 1,258.0
 Noise: 0.3

Peak table for sample 1 : H4 R3 lib

Peak	Size [bp]	Conc. [pg/μl]	Molarity [pmol/l]	Observations
1	35	125.00	5,411.3	Lower Marker
2	267	1,918.16	10,875.7	
3	10,380	75.00	10.9	Upper Marker

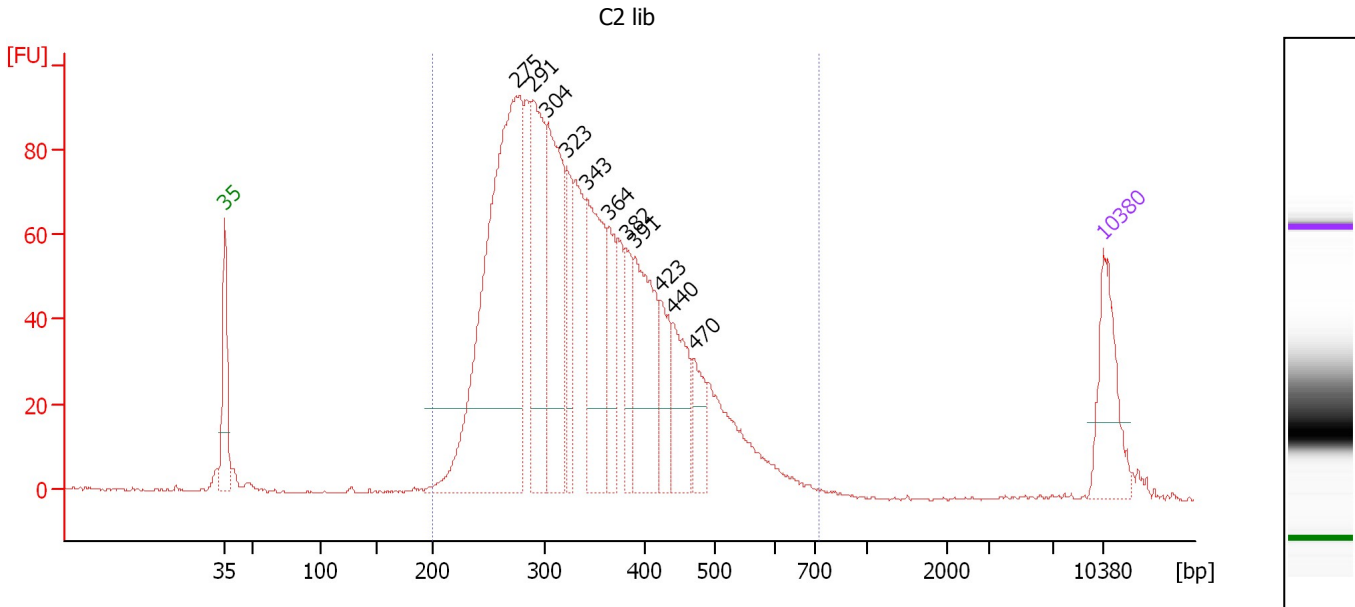
Region table for sample 1 : H4 R3 lib

From [bp]	Molarity [pmol/l]	Average Size [bp]	Conc. [pg/μl]	To [bp]	Corr. Area	% of Total	Size distribution in CV [%]	Color
200	10,371.1	304	2,004.79	496	1,258.0	97	17.8	Blue

Assay Class: High Sensitivity DNA Assay
 Data Path: C:\...ents and Settings\Bioanalyzer\2012-02-24\2012-02-24_001.xad

Created: 2/24/2012 9:57:05 AM
 Modified: 2/24/2012 10:45:31 AM

Electropherogram Summary Continued ...



Setpoint Deviations for sample 2 : C2 lib

Height Threshold [FU] : 20

Overall Results for sample 2 : C2 lib

Number of peaks found: 11 Corr. Area 1: 1,912.4
 Noise: 0.3

Peak table for sample 2 : C2 lib

Peak	Size [bp]	Conc. [pg/μl]	Molarity [pmol/l]	Observations
1	35	125.00	5,411.3	Lower Marker
2	275	724.55	3,992.8	
3	291	239.57	1,248.4	
4	304	261.83	1,306.9	
5	323	82.90	389.3	
6	343	206.86	914.3	
7	364	93.82	390.5	
8	382	54.39	216.0	
9	391	183.05	710.1	
10	423	65.37	233.9	
11	440	91.33	314.6	
12	470	53.64	173.0	
13	10,380	75.00	10.9	Upper Marker

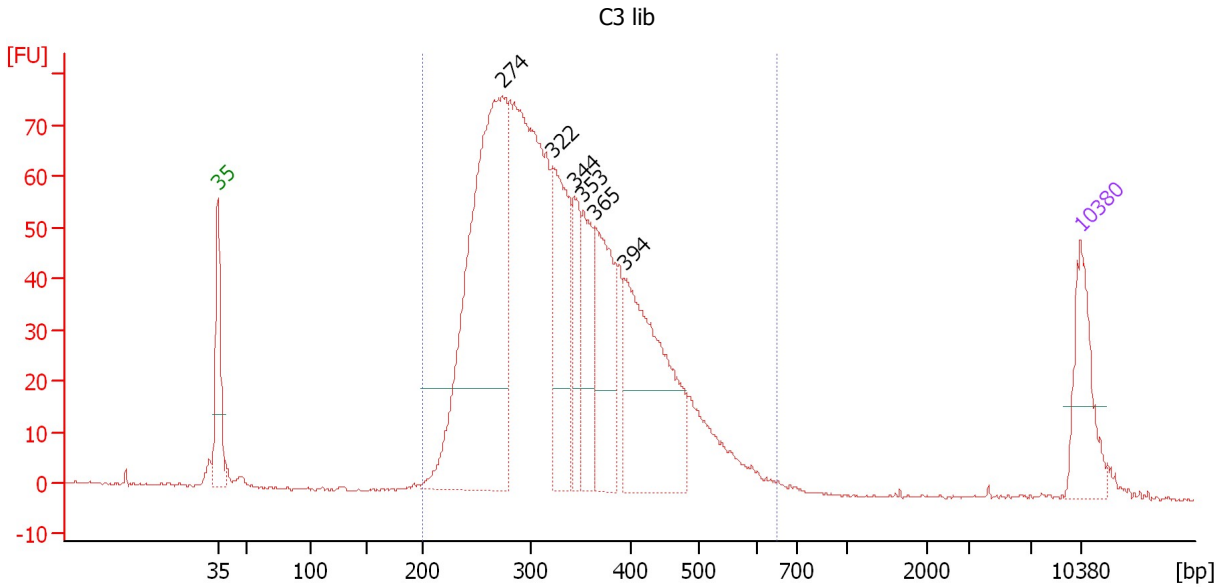
Region table for sample 2 : C2 lib

From [bp]	Molarity [pmol/l]	Average Size [bp]	Conc. [pg/μl]	To [bp]	Corr. Area	% of Total	Size distribution in CV [%]	Color
200	12,010.5	347	2,552.37	727	1,912.4	98	24.4	Blue

Assay Class: High Sensitivity DNA Assay
 Data Path: C:\...ents and Settings\Bioanalyzer\2012-02-24\2012-02-24_001.xad

Created: 2/24/2012 9:57:05 AM
 Modified: 2/24/2012 10:45:31 AM

Electropherogram Summary Continued ...



Setpoint Deviations for sample 3 : C3 lib

Height Threshold [FU] : 20

Overall Results for sample 3 : C3 lib

Number of peaks found: 6 Corr. Area 1: 1,558.7
 Noise: 0.3

Peak table for sample 3 : C3 lib

Peak	Size [bp]	Conc. [pg/μl]	Molarity [pmol/l]	Observations
1	35	125.00	5,411.3	Lower Marker
2	274	735.43	4,067.6	
3	322	225.55	1,061.5	
4	344	86.69	382.3	
5	353	114.73	492.8	
6	365	181.08	752.5	
7	394	309.95	1,190.9	
8	10,380	75.00	10.9	Upper Marker

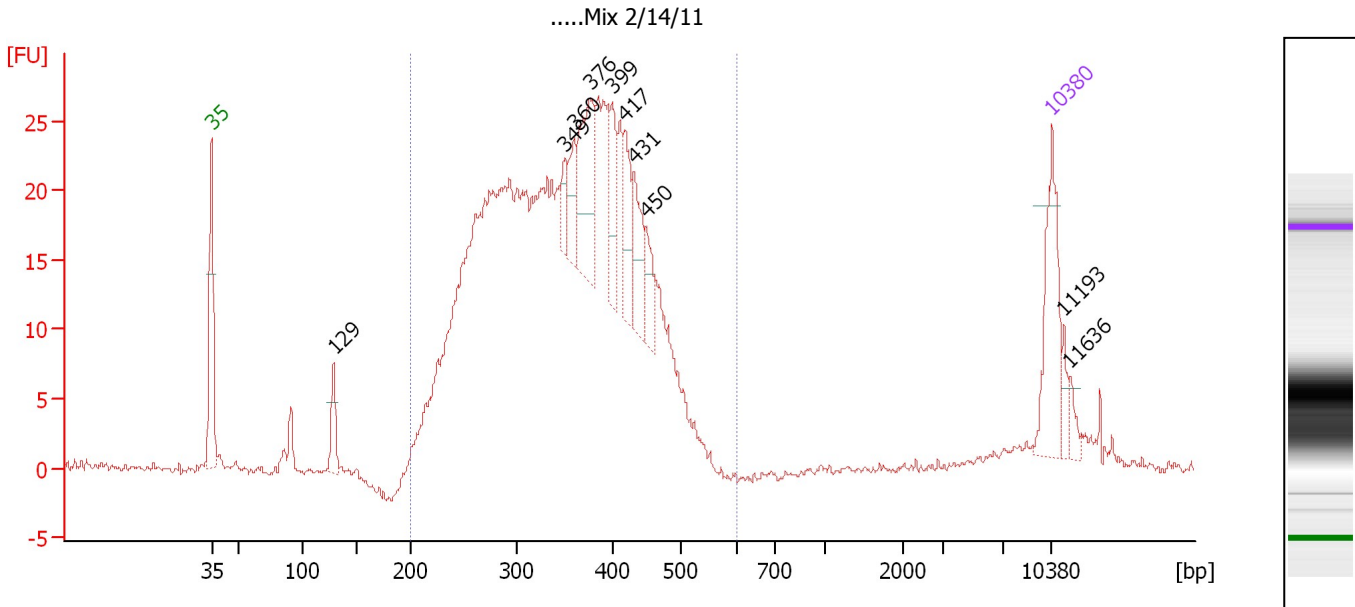
Region table for sample 3 : C3 lib

From [bp]	Molarity [pmol/l]	Average Size [bp]	Conc. [pg/μl]	To [bp]	Corr. Area	% of Total	Size distribution in CV [%]	Color
200	11,794.9	337	2,451.88	651	1,558.7	98	23.3	Blue

Assay Class: High Sensitivity DNA Assay
 Data Path: C:\...ents and Settings\Bioanalyzer\2012-02-24\2012-02-24_001.xad

Created: 2/24/2012 9:57:05 AM
 Modified: 2/24/2012 10:45:31 AM

Electropherogram Summary Continued ...



Overall Results for sample 4 :Mix 2/14/11

Number of peaks found: 10 Corr. Area 1: 557.2
 Noise: 0.3

Peak table for sample 4 :Mix 2/14/11

Peak	Size [bp]	Conc. [pg/μl]	Molarity [pmol/l]	Observations
1	35	125.00	5,411.3	Lower Marker
2	129	38.13	447.9	
3	349	21.80	94.6	
4	360	35.25	148.4	
5	376	104.23	419.5	
6	399	52.14	197.9	
7	417	51.81	188.3	
8	431	52.56	184.8	
9	450	31.81	107.1	
10	10,380	75.00	10.9	Upper Marker
11	11,193	0.00	0.0	
12	11,636	0.00	0.0	

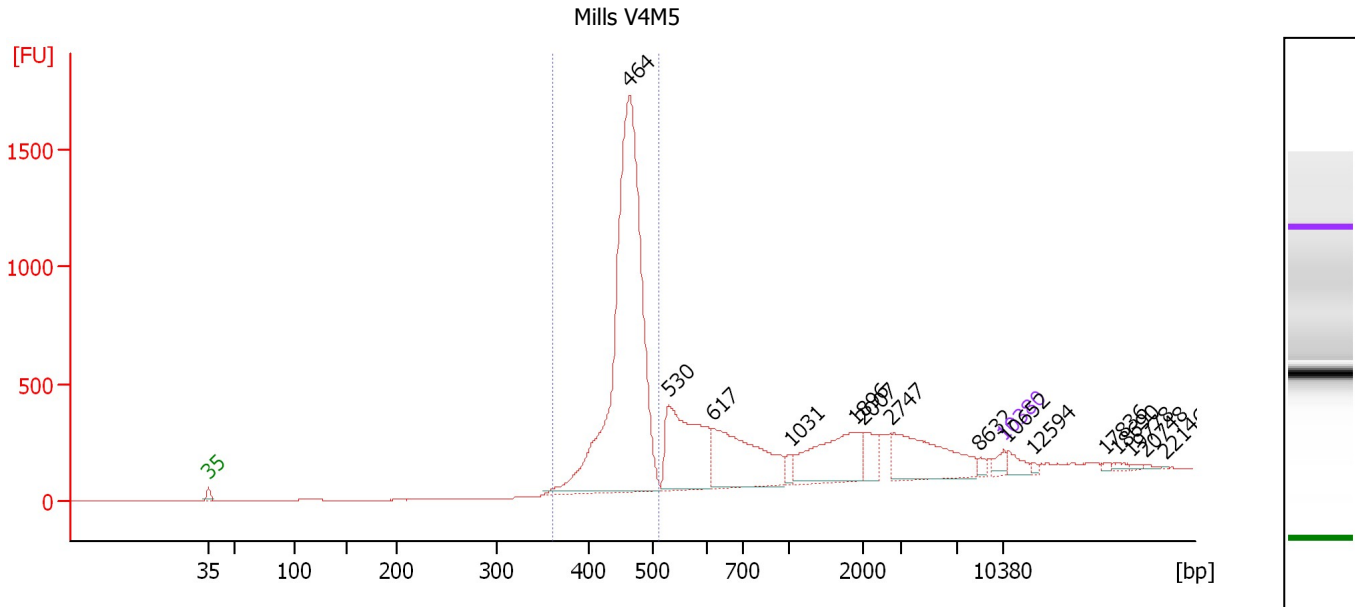
Region table for sample 4 :Mix 2/14/11

From [bp]	Molarity [pmol/l]	Average Size [bp]	Conc. [pg/μl]	To [bp]	Corr. Area	% of Total	Size distribution in CV [%]	Color
200	11,535.2	351	2,508.50	600	557.2	95	20.5	Blue

Assay Class: High Sensitivity DNA Assay
 Data Path: C:\...ents and Settings\Bioanalyzer\2012-02-24\2012-02-24_001.xad

Created: 2/24/2012 9:57:05 AM
 Modified: 2/24/2012 10:45:31 AM

Electropherogram Summary Continued ...



Overall Results for sample 5 : Mills V4M5

Number of peaks found: 15 Corr. Area 1: 5,615.4
 Noise: 0.3

Peak table for sample 5 : Mills V4M5

Peak	Size [bp]	Conc. [pg/μl]	Molarity [pmol/l]	Observations
1	35	125.00	5,411.3	Lower Marker
2	464	5,911.47	19,313.7	
3	530	1,397.41	3,995.2	
4	617	1,284.98	3,155.6	
5	1,031	82.34	121.0	
6	1,896	789.14	630.5	
7	2,007	210.60	159.0	
8	2,747	781.87	431.3	
9	8,633	45.67	8.0	
10	10,380	75.00	10.9	Upper Marker
11	10,652	0.00	0.0	
12	12,594	0.00	0.0	
13	17,836	0.00	0.0	
14	18,690	0.00	0.0	
15	19,778	0.00	0.0	
16	20,748	0.00	0.0	
17	22,146	0.00	0.0	

Region table for sample 5 : Mills V4M5


From [bp]	Molarity [pmol/l]	Average Size [bp]	Conc. [pg/μl]	To [bp]	Corr. Area	% of Total	Size distribution in CV [%]	Color
362	18,467.4	458	5,577.34	513	5,615.4	51	5.1	Blue

Assay Class: High Sensitivity DNA Assay
 Data Path: C:\...ents and Settings\Bioanalyzer\2012-02-24\2012-02-24_001.xad


Created: 2/24/2012 9:57:05 AM
 Modified: 2/24/2012 10:45:31 AM

Electropherogram Summary Continued ...

... Peak table for sample 6 : All

Peak	Size [bp]	Conc. [pg/µl]	Molarity [pmol/l]	Observations
27	611	36.29	90.1	
28	628	47.09	113.6	
29	660	38.44	88.2	
30	826	42.76	78.4	
31	952	40.84	65.0	
32	1,022	39.20	58.1	
33	1,296	35.99	42.1	
34	1,512	50.69	50.8	
35	1,700	32.78	29.2	
36	1,895	63.90	51.1	
37	2,221	56.32	38.4	
38	2,679	25.79	14.6	
39	2,880	18.58	9.8	
40	3,620	25.33	10.6	
41	4,999	30.27	9.2	
42	6,453	29.47	6.9	
43	7,757	16.06	3.1	
44	 10,380	75.00	10.9	Upper Marker
45	12,337	0.00	0.0	
46	13,042	0.00	0.0	
47	13,473	0.00	0.0	
48	14,295	0.00	0.0	
49	14,804	0.00	0.0	
50	15,391	0.00	0.0	
51	16,330	0.00	0.0	
52	17,466	0.00	0.0	
53	18,953	0.00	0.0	
54	19,814	0.00	0.0	
55	20,519	0.00	0.0	
56	21,772	0.00	0.0	

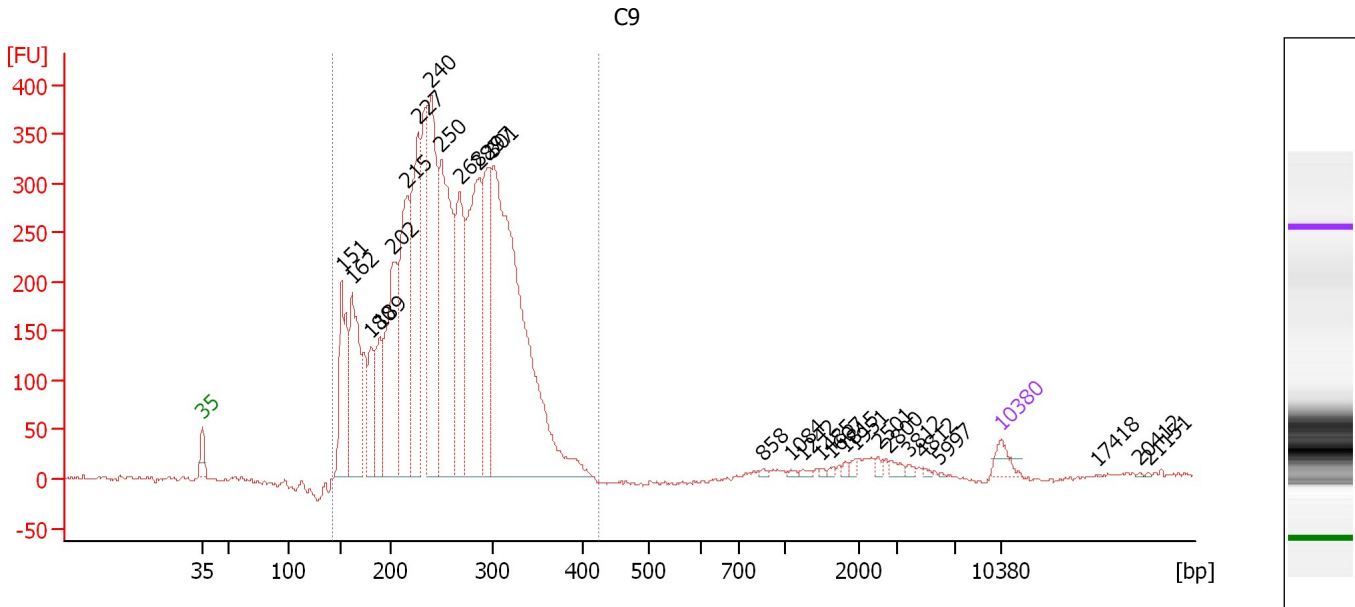
Region table for sample 6 : All

From [bp]	Molarity [pmol/l]	Average Size [bp]	Conc. [pg/µl]	To [bp]	Corr. Area	% of Total	Size distribution in CV [%]	Color
136	62,633.9	295	10,514.26	553	7,347.0	84	32.4	

Assay Class: High Sensitivity DNA Assay
 Data Path: C:\...ents and Settings\Bioanalyzer\2012-02-24\2012-02-24_001.xad

Created: 2/24/2012 9:57:05 AM
 Modified: 2/24/2012 10:45:31 AM

Electropherogram Summary Continued ...



Setpoint Deviations for sample 7 : C9

Height Threshold [FU] : 0.1

Overall Results for sample 7 : C9

Number of peaks found: 28 Corr. Area 1: 6,790.2
 Noise: 2.1

Peak table for sample 7 : C9

Peak	Size [bp]	Conc. [pg/μl]	Molarity [pmol/l]	Observations
1	35	125.00	5,411.3	Lower Marker
2	151	881.27	8,813.7	
3	162	1,064.48	9,959.1	
4	180	419.02	3,532.8	
5	189	505.46	4,049.6	
6	202	1,283.07	9,639.8	
7	215	1,327.68	9,340.0	
8	227	1,424.62	9,509.8	
9	240	1,708.09	10,799.9	
10	250	1,866.84	11,330.0	
11	268	1,053.26	5,952.3	
12	287	1,701.50	8,979.9	
13	297	934.47	4,765.5	
14	301	4,051.93	20,364.6	
15	858	12.30	21.7	
16	1,084	10.33	14.4	
17	1,242	13.91	17.0	
18	1,485	8.37	8.5	
19	1,607	11.04	10.4	
20	1,815	14.46	12.1	
21	1,951	21.19	16.5	
22	2,501	19.80	12.0	

Assay Class: High Sensitivity DNA Assay
 Data Path: C:\...ents and Settings\Bioanalyzer\2012-02-24\2012-02-24_001.xad


Created: 2/24/2012 9:57:05 AM
 Modified: 2/24/2012 10:45:31 AM

Electropherogram Summary Continued ...

... Peak table for sample 7 : C9

Peak	Size [bp]	Conc. [pg/μl]	Molarity [pmol/l]	Observations
23	2,800	33.65	18.2	
24	3,812	14.70	5.8	
25	4,812	9.46	3.0	
26	5,997	2.48	0.6	
27	10,380	75.00	10.9	Upper Marker
28	17,418	0.00	0.0	
29	20,412	0.00	0.0	
30	21,151	0.00	0.0	

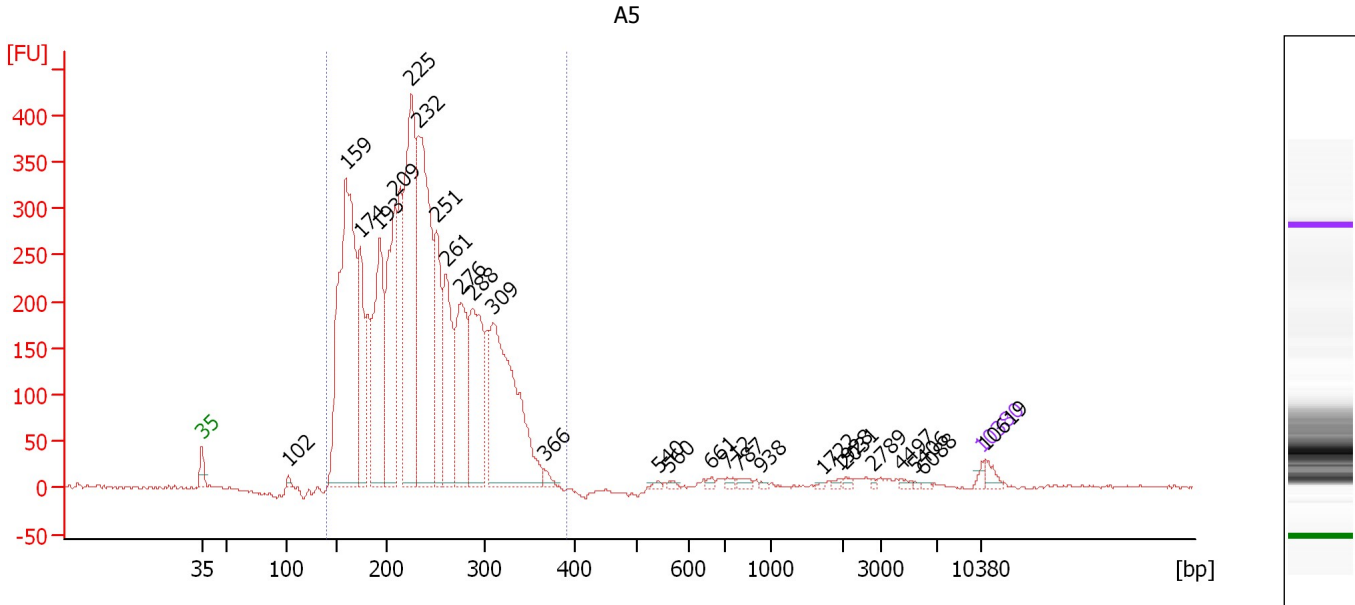
Region table for sample 7 : C9

From [bp]	Molarity [pmol/l]	Average Size [bp]	Conc. [pg/μl]	To [bp]	Corr. Area	% of Total	Size distribution in CV [%]	Color
143	122,752.0	256	19,450.72	423	6,790.2	98	20.9	

Assay Class: High Sensitivity DNA Assay
 Data Path: C:\...ents and Settings\Bioanalyzer\2012-02-24\2012-02-24_001.xad

Created: 2/24/2012 9:57:05 AM
 Modified: 2/24/2012 10:45:31 AM

Electropherogram Summary Continued ...



Overall Results for sample 8 : A5

Number of peaks found: 27 Corr. Area 1: 6,461.9
 Noise: 1.6


Peak table for sample 8 : A5

Peak	Size [bp]	Conc. [pg/μl]	Molarity [pmol/l]	Observations
1	35	125.00	5,411.3	Lower Marker
2	102	89.98	1,334.2	
3	159	9,425.39	89,547.8	
4	174	2,520.93	21,962.7	
5	193	3,961.84	31,077.2	
6	209	4,018.55	29,168.8	
7	225	6,215.10	41,765.9	
8	232	6,691.51	43,610.7	
9	251	2,522.53	15,237.8	
10	261	2,583.95	15,027.0	
11	276	2,744.14	15,083.9	
12	288	3,104.02	16,357.7	
13	309	5,444.33	26,706.1	
14	366	155.53	643.4	
15	540	44.49	124.8	
16	560	53.31	144.1	
17	661	59.76	137.0	
18	712	65.25	138.8	
19	787	100.17	193.0	
20	938	31.50	50.9	
21	1,722	21.86	19.2	
22	1,928	40.13	31.5	
23	2,031	47.06	35.1	
24	2,789	32.20	17.5	
25	4,497	43.39	14.6	
26	5,406	23.78	6.7	


Assay Class: High Sensitivity DNA Assay
Data Path: C:\...ents and Settings\Bioanalyzer\2012-02-24\2012-02-24_001.xad

Created: 2/24/2012 9:57:05 AM
Modified: 2/24/2012 10:45:31 AM

Electropherogram Summary Continued ...**... Peak table for sample 8 : A5**

Peak	Size [bp]	Conc. [pg/ μ l]	Molarity [pmol/l]	Observations
27	6,088	24.75	6.2	
28	 10,380	75.00	10.9	Upper Marker
29	10,619	0.00	0.0	

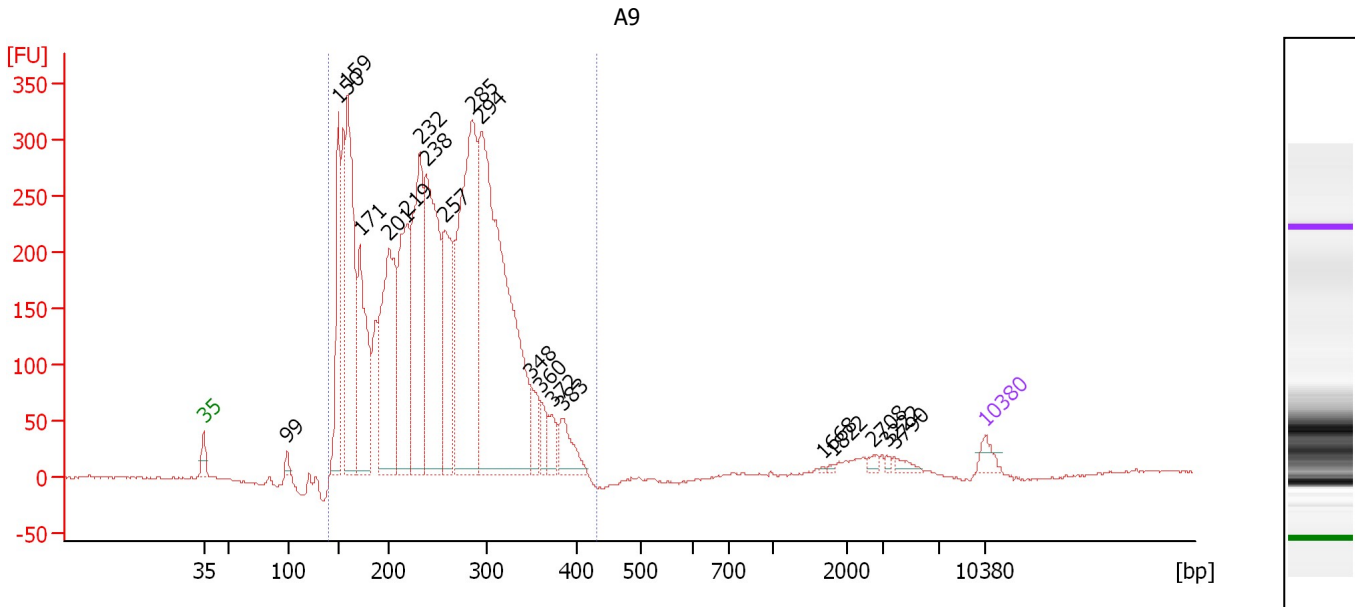
Region table for sample 8 : A5

From [bp]	Molarity [pmol/l]	Average Size [bp]	Conc. [pg/ μ l]	To [bp]	Corr. Area	% of Total	Size distribution in CV [%]	Color
140	366,627.3	235	53,119.19	392	6,461.9	97	22.6	

Assay Class: High Sensitivity DNA Assay
 Data Path: C:\...ents and Settings\Bioanalyzer\2012-02-24\2012-02-24_001.xad

Created: 2/24/2012 9:57:05 AM
 Modified: 2/24/2012 10:45:31 AM

Electropherogram Summary Continued ...



Overall Results for sample 9 : A9

Number of peaks found: 20 Corr. Area 1: 6,303.3
 Noise: 0.8

Peak table for sample 9 : A9

Peak	Size [bp]	Conc. [pg/μl]	Molarity [pmol/l]	Observations
1	35	125.00	5,411.3	Lower Marker
2	99	68.70	1,051.4	
3	150	1,070.55	10,805.5	
4	159	2,016.65	19,195.2	
5	171	1,290.67	11,405.8	
6	201	1,809.74	13,655.3	
7	219	1,383.44	9,590.1	
8	232	1,714.79	11,197.4	
9	238	2,123.15	13,488.4	
10	257	1,150.39	6,773.2	
11	285	2,783.20	14,806.8	
12	294	4,183.05	21,561.1	
13	348	264.79	1,152.3	
14	360	162.10	683.2	
15	372	180.46	734.9	
16	383	286.80	1,133.5	
17	1,668	8.12	7.4	
18	1,822	13.44	11.2	
19	2,708	34.95	19.6	
20	3,222	20.20	9.5	
21	3,790	48.35	19.3	
22	10,380	75.00	10.9	Upper Marker

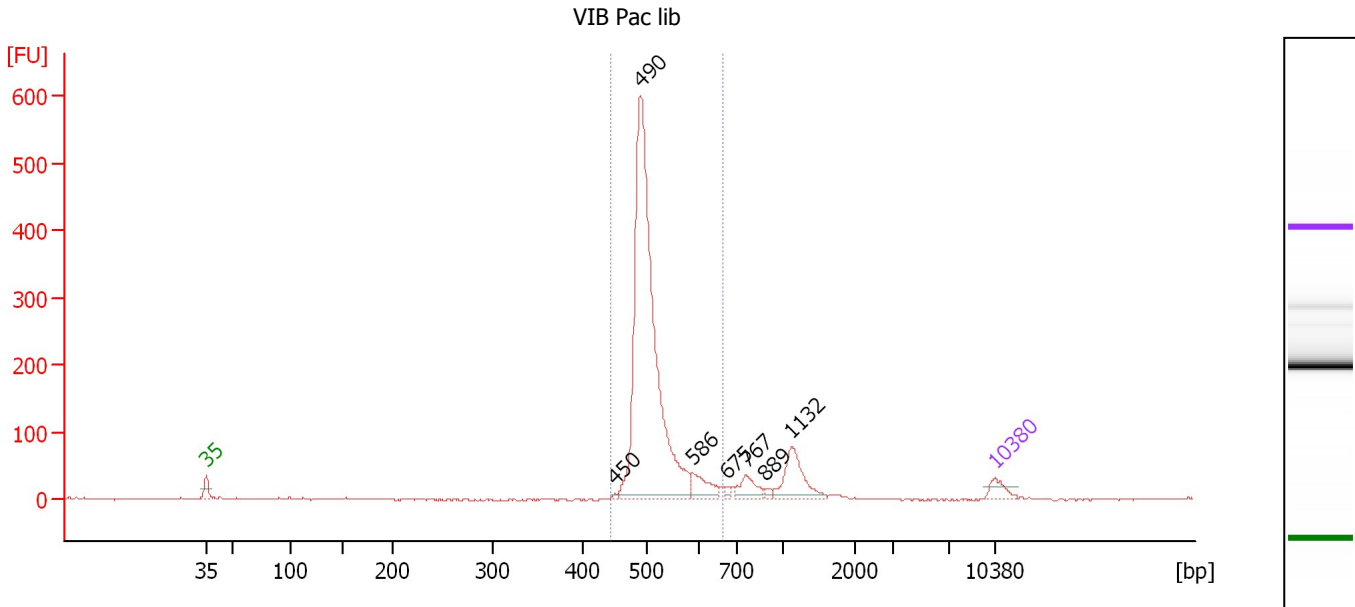
Region table for sample 9 : A9

From [bp]	Molarity [pmol/l]	Average Size [bp]	Conc. [pg/μl]	To [bp]	Corr. Area	% of Total	Size distribution in CV [%]	Color
141	142,703.9	250	21,509.36	433	6,303.3	98	24.6	Blue

Assay Class: High Sensitivity DNA Assay
 Data Path: C:\...ents and Settings\Bioanalyzer\2012-02-24\2012-02-24_001.xad

Created: 2/24/2012 9:57:05 AM
 Modified: 2/24/2012 10:45:31 AM

Electropherogram Summary Continued ...



Overall Results for sample 10 : VIB Pac lib

Number of peaks found: 7 Corr. Area 1: 1,536.5
 Noise: 1.4

Peak table for sample 10 : VIB Pac lib

Peak	Size [bp]	Conc. [pg/μl]	Molarity [pmol/l]	Observations
1	35	125.00	5,411.3	Lower Marker
2	450	9.83	33.1	
3	490	3,568.13	11,040.5	
4	586	183.85	475.7	
5	675	31.15	69.9	
6	767	147.34	291.2	
7	889	25.11	42.8	
8	1,132	317.17	424.7	
9	10,380	75.00	10.9	Upper Marker

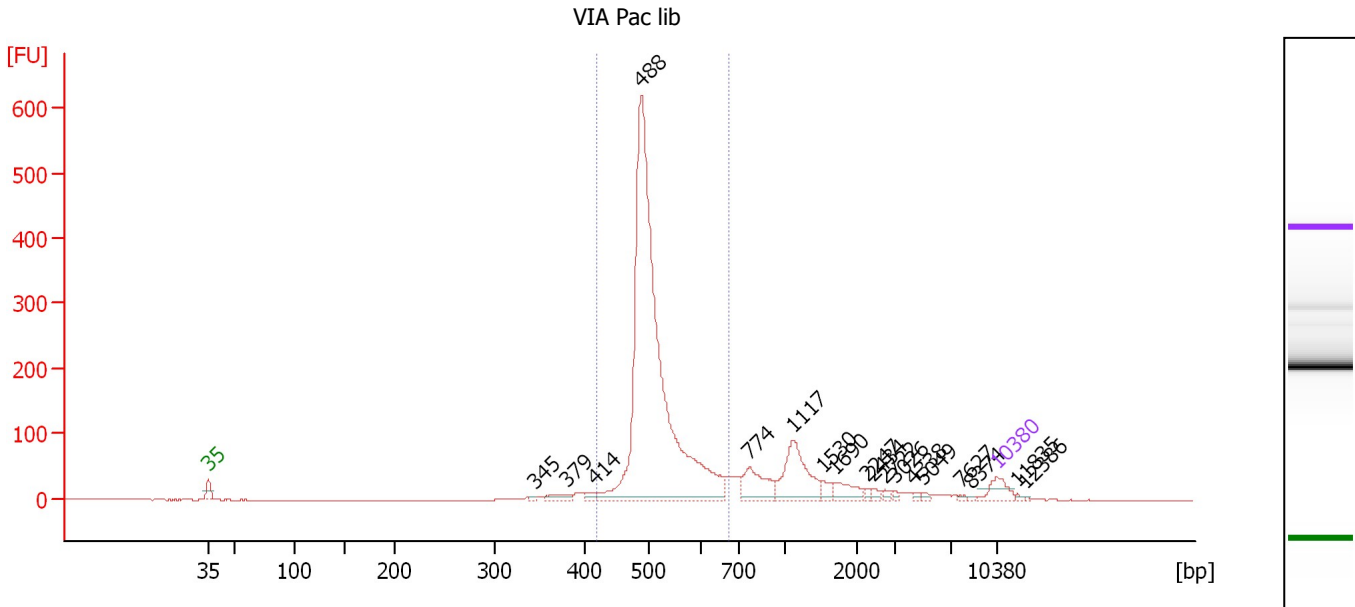
Region table for sample 10 : VIB Pac lib

From [bp]	Molarity [pmol/l]	Average Size [bp]	Conc. [pg/μl]	To [bp]	Corr. Area	% of Total	Size distribution in CV [%]	Color
445	10,982.8	510	3,676.52	664	1,536.5	86	6.8	Blue

Assay Class: High Sensitivity DNA Assay
 Data Path: C:\...ents and Settings\Bioanalyzer\2012-02-24\2012-02-24_001.xad

Created: 2/24/2012 9:57:05 AM
 Modified: 2/24/2012 10:45:31 AM

Electropherogram Summary Continued ...



Overall Results for sample 11 : VIA Pac lib

Number of peaks found: 18 Corr. Area 1: 1,872.0
 Noise: 0.4

Peak table for sample 11 : VIA Pac lib

Peak	Size [bp]	Conc. [pg/μl]	Molarity [pmol/l]	Observations
1	35	125.00	5,411.3	Lower Marker
2	345	8.76	38.5	
3	379	55.22	220.8	
4	414	27.47	100.6	
5	488	3,350.45	10,402.4	
6	774	204.89	401.3	
7	1,117	335.24	454.7	
8	1,530	38.37	38.0	
9	1,690	86.78	77.8	
10	2,247	15.75	10.6	
11	2,434	19.46	12.1	
12	2,722	16.12	9.0	
13	3,026	10.54	5.3	
14	4,338	10.03	3.5	
15	5,049	11.75	3.5	
16	7,627	6.76	1.3	
17	8,374	4.85	0.9	
18	10,380	75.00	10.9	Upper Marker
19	11,835	0.00	0.0	
20	12,386	0.00	0.0	

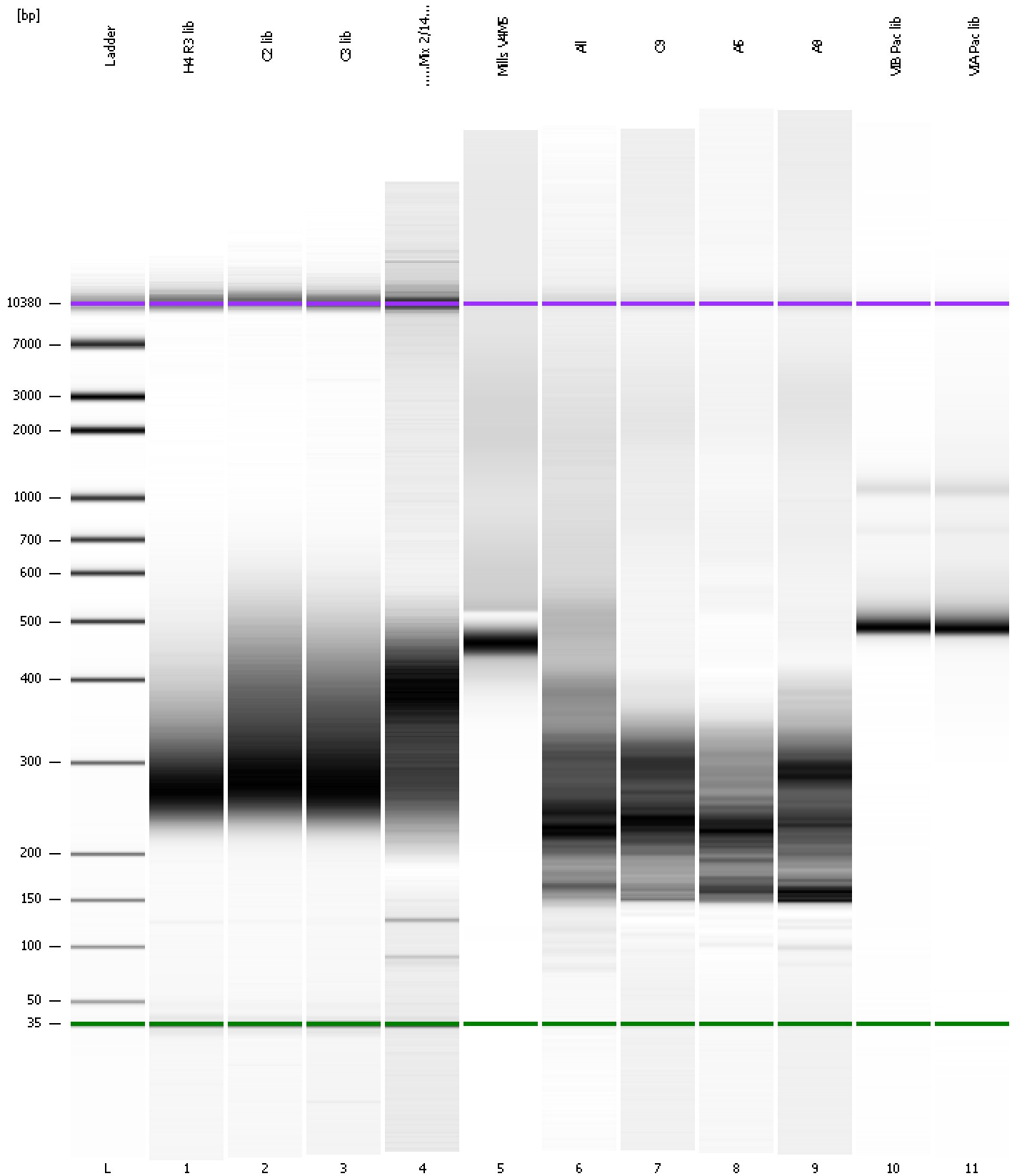
Region table for sample 11 : VIA Pac lib

From [bp]	Molarity [pmol/l]	Average Size [bp]	Conc. [pg/μl]	To [bp]	Corr. Area	% of Total	Size distribution in CV [%]	Color
419	9,616.6	514	3,237.57	674	1,872.0	74	8.5	Blue

Assay Class: High Sensitivity DNA Assay
Data Path: C:\...ents and Settings\Bioanalyzer\2012-02-24\2012-02-24_001.xad

Created: 2/24/2012 9:57:05 AM
Modified: 2/24/2012 10:45:31 AM

Gel Image

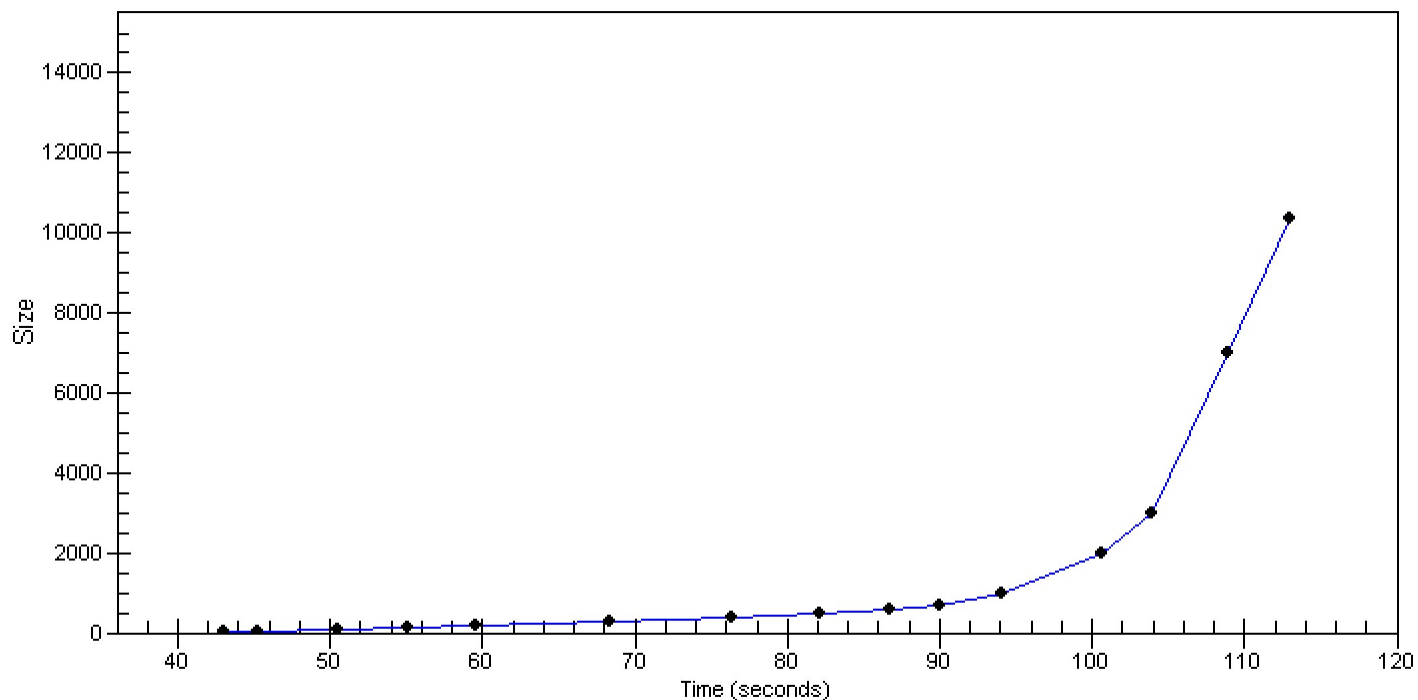


Assay Class: High Sensitivity DNA Assay
Data Path: C:\...ents and Settings\Bioanalyzer\2012-02-24\2012-02-24_001.xad

Created: 2/24/2012 9:57:05 AM
Modified: 2/24/2012 10:45:31 AM

Curves

Standard Curve



Assay Class: High Sensitivity DNA Assay
 Data Path: C:\...ents and Settings\Bioanalyzer\2012-02-24\2012-02-24_001.xad

Created: 2/24/2012 9:57:05 AM
 Modified: 2/24/2012 10:45:31 AM

Run Logbook

Description	Number	Source	Category	Sub Category	Time	Time Zone	User	Host
Run ended on port 1 (Number of wells acquired: 12)		Instrument	Run		2/24/2012 10:38:23 AM	(GMT --08:00) Pacific Standard Time	UC Davis	D8XSMGH1
Run started on port 1 (File: C:\Documents and Settings\Bioanalyzer\2012-02-24\2012-02-24_001.xad)		Instrument	Run		2/24/2012 9:57:10 AM	(GMT --08:00) Pacific Standard Time	UC Davis	D8XSMGH1
Product Number : G2938B		Instrument	Run		2/24/2012 9:57:10 AM	(GMT --08:00) Pacific Standard Time	UC Davis	D8XSMGH1
Name :		Instrument	Run		2/24/2012 9:57:10 AM	(GMT --08:00) Pacific Standard Time	UC Davis	D8XSMGH1
Vendor : Agilent Technologies		Instrument	Run		2/24/2012 9:57:10 AM	(GMT --08:00) Pacific Standard Time	UC Davis	D8XSMGH1
Serial# : DE13701086		Instrument	Run		2/24/2012 9:57:10 AM	(GMT --08:00) Pacific Standard Time	UC Davis	D8XSMGH1
Firmware : C.01.069		Instrument	Run		2/24/2012 9:57:10 AM	(GMT --08:00) Pacific Standard Time	UC Davis	D8XSMGH1
Cartridge : Electrode		Instrument	Run		2/24/2012 9:57:10 AM	(GMT --08:00) Pacific Standard Time	UC Davis	D8XSMGH1