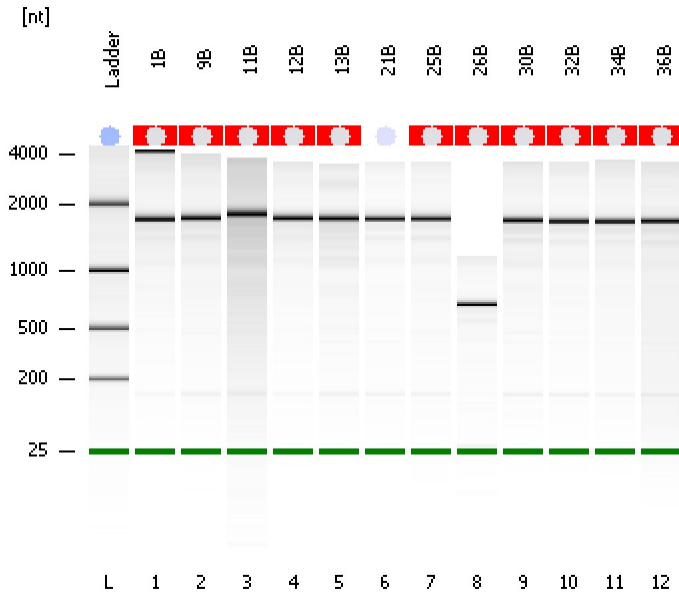


Assay Class: Eukaryote Total RNA Nano  
Data Path: C:\...ents and Settings\Bioanalyzer\2012-02-24\2012-02-24\_002.xad

Created: 2/24/2012 11:44:02 AM  
Modified: 2/24/2012 12:07:55 PM

Electrophoresis File Run Summary



Instrument Information:

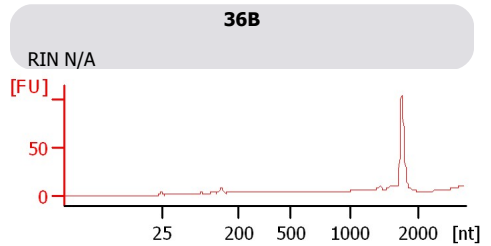
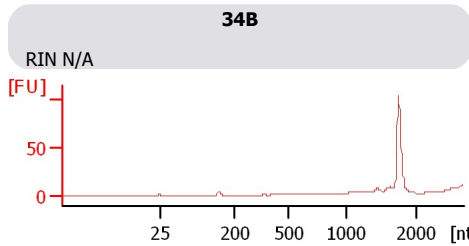
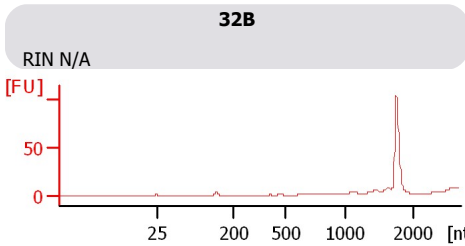
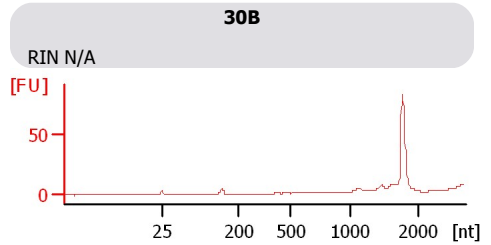
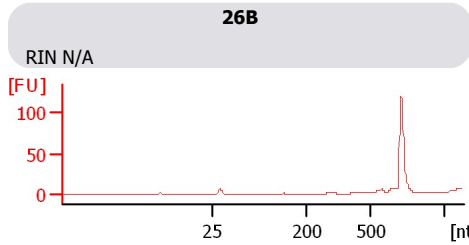
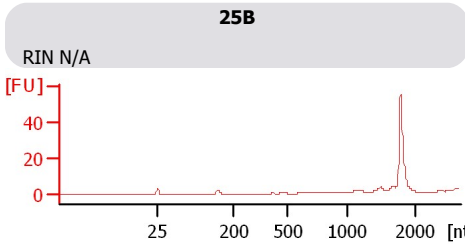
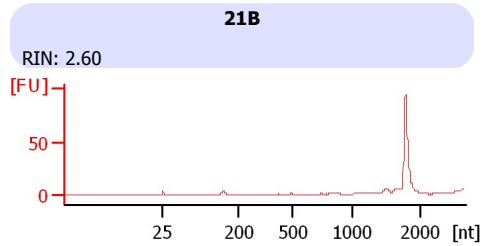
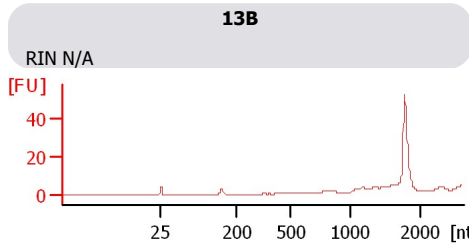
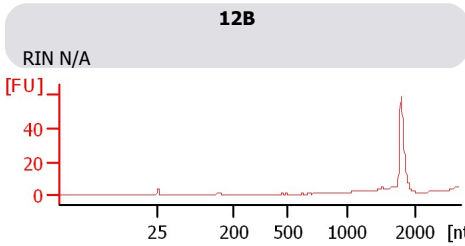
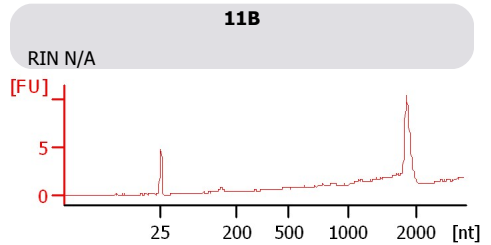
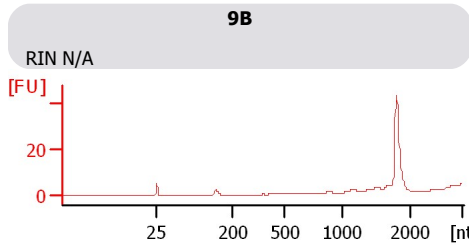
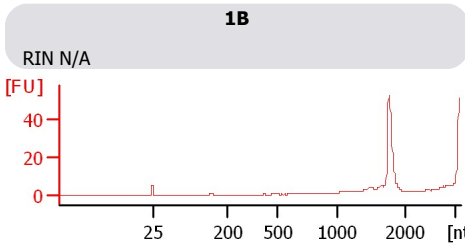
Instrument Name: DE13701086      Firmware: C.01.069  
Serial#: DE13701086      Type: G2938B

Assay Information:

Assay Origin Path: C:\Program Files\Agilent\2100 bioanalyzer\2100 expert\assays\RNA\Eukaryote Total RNA Nano Series II.xsy  
Assay Class: Eukaryote Total RNA Nano  
Version: 2.6  
Assay Comments: Total RNA Analysis ng sensitivity (Eukaryote)  
© Copyright 2003 - 2009 Agilent Technologies, Inc.

Chip Information:

Chip Lot #:   
Reagent Kit Lot #:   
Chip Comments:



Assay Class: Eukaryote Total RNA Nano  
 Data Path: C:\...ents and Settings\Bioanalyzer\2012-02-24\2012-02-24\_002.xad

Created: 2/24/2012 11:44:02 AM  
 Modified: 2/24/2012 12:07:55 PM

**Electrophoresis File Run Summary (Chip Summary)**

Sample Name	Sample Comment	Status	Result Label	Result Color
1B		✓	RIN N/A	
9B		✓	RIN N/A	
11B		✓	RIN N/A	
12B		✓	RIN N/A	
13B		✓	RIN N/A	
21B		✓	RIN: 2.60	
25B		✓	RIN N/A	
26B		✓	RIN N/A	
30B		✓	RIN N/A	
32B		✓	RIN N/A	
34B		✓	RIN N/A	
36B		✓	RIN N/A	
Ladder		✓	All Other Samples	

**Chip Lot #**

**Reagent Kit Lot #**

**Chip Comments :**

Assay Class: Eukaryote Total RNA Nano  
Data Path: C:\...ents and Settings\Bioanalyzer\2012-02-24\2012-02-24\_002.xad

Created: 2/24/2012 11:44:02 AM  
Modified: 2/24/2012 12:07:55 PM

## Electrophoresis Assay Details

### General Analysis Settings

Number of Available Sample and Ladder Wells (Max.) : 13

Minimum Visible Range [s] : 17

Maximum Visible Range [s] : 70

Start Analysis Time Range [s] : 19

End Analysis Time Range [s] : 69

Ladder Concentration [ng/μl] : 150

Lower Marker Concentration [ng/μl] : 0

Upper Marker Concentration [ng/μl] : 0

Used Lower Marker for Quantitation

Standard Curve Fit is Logarithmic

Show Data Aligned to Lower Marker

### Integrator Settings

Integration Start Time [s] : 19

Integration End Time [s] : 69

Slope Threshold : 0.6

Height Threshold [FU] : 0.5

Area Threshold : 0.2

Width Threshold [s] : 0.5

Baseline Plateau [s] : 6

### Filter Settings

Filter Width [s] : 0.5

Polynomial Order : 4

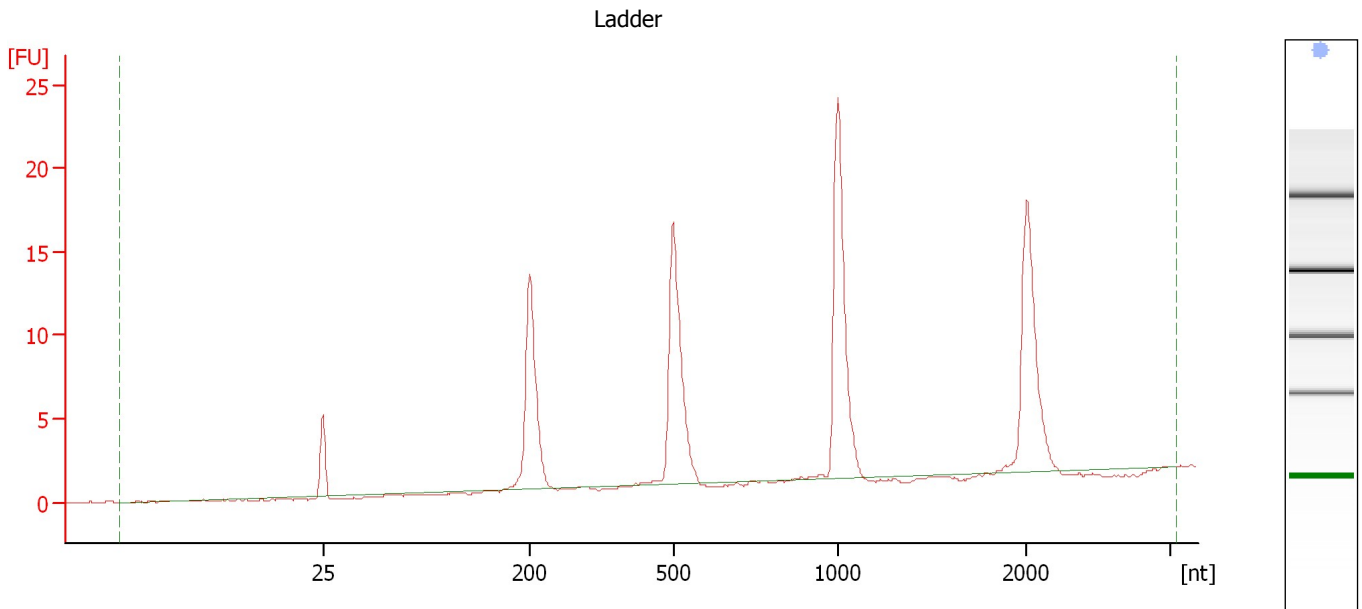
### Ladder

Ladder Peak	Size
1	25
2	200
3	500
4	1000
5	2000
6	4000

Assay Class: Eukaryote Total RNA Nano  
Data Path: C:\...ents and Settings\Bioanalyzer\2012-02-24\2012-02-24\_002.xad

Created: 2/24/2012 11:44:02 AM  
Modified: 2/24/2012 12:07:55 PM

**Electropherogram Summary**



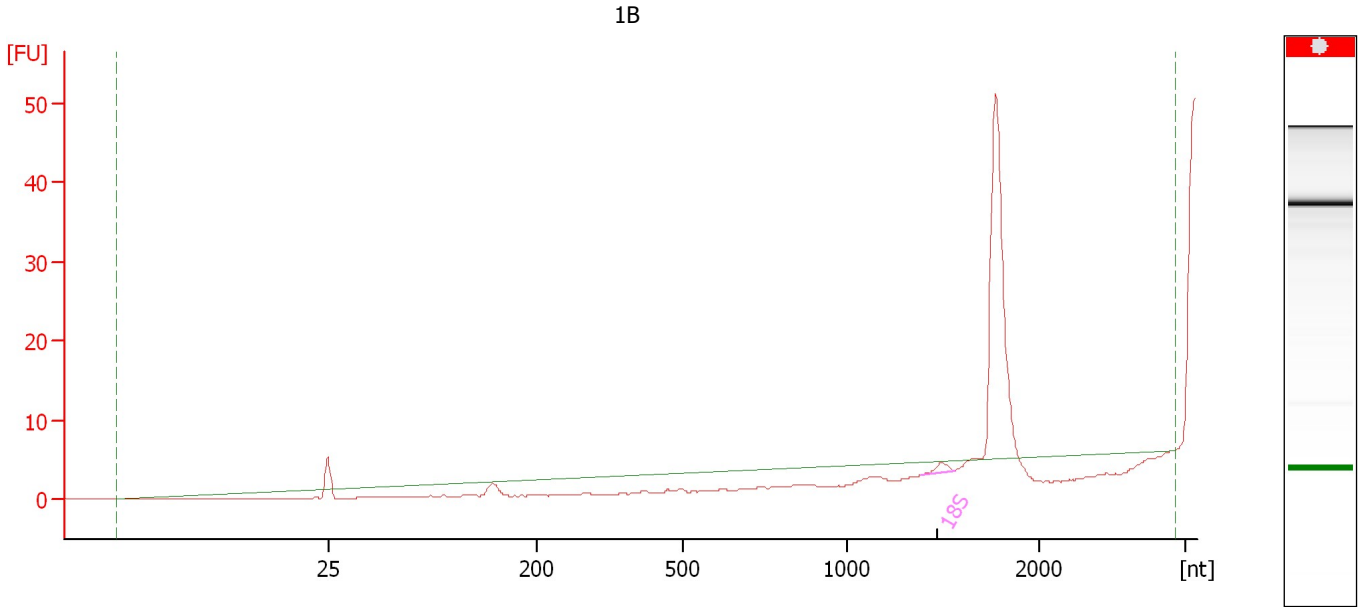
**Overall Results for Ladder**

RNA Area:	84.5	Result Flagging Color:	<span style="background-color: #add8e6; border: 1px solid black; display: inline-block; width: 20px; height: 10px;"></span>
RNA Concentration:	150 ng/ $\mu$ l	Result Flagging Label:	All Other Samples

Assay Class: Eukaryote Total RNA Nano  
Data Path: C:\...ents and Settings\Bioanalyzer\2012-02-24\2012-02-24\_002.xad

Created: 2/24/2012 11:44:02 AM  
Modified: 2/24/2012 12:07:55 PM

**Electropherogram Summary Continued ...**



**Overall Results for sample 1 : 1B**

RNA Area:	50.1	RNA Integrity Number (RIN):	N/A (B.02.08)
RNA Concentration:	89 ng/μl	Result Flagging Color:	<span style="background-color: #cccccc; border: 1px solid black; display: inline-block; width: 20px; height: 10px;"></span>
rRNA Ratio [28s / 18s]:	0.0	Result Flagging Label:	RIN N/A

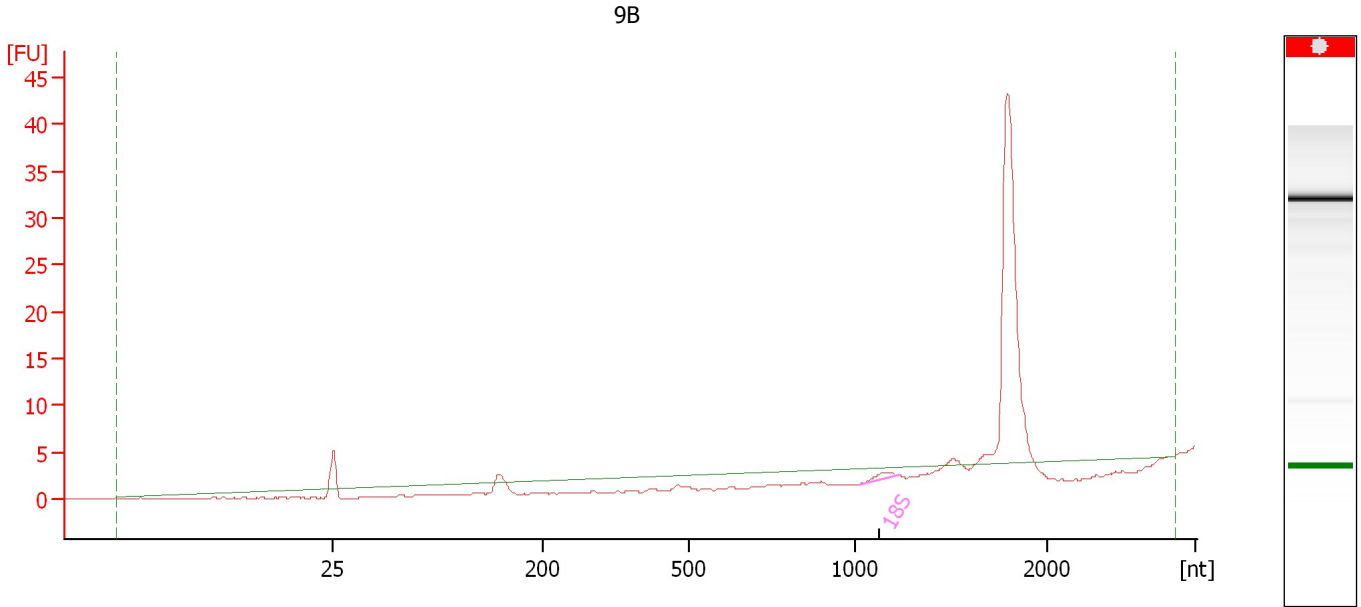
**Fragment table for sample 1 : 1B**

Name	Start Size [nt]	End Size [nt]	Area	% of total Area
18S	1,386	1,559	1.4	2.8

Assay Class: Eukaryote Total RNA Nano  
Data Path: C:\...ents and Settings\Bioanalyzer\2012-02-24\2012-02-24\_002.xad

Created: 2/24/2012 11:44:02 AM  
Modified: 2/24/2012 12:07:55 PM

**Electropherogram Summary Continued ...**



**Overall Results for sample 2 : 9B**

RNA Area:	45.8	RNA Integrity Number (RIN):	N/A (B.02.08)
RNA Concentration:	81 ng/μl	Result Flagging Color:	<span style="background-color: #cccccc; border: 1px solid black; display: inline-block; width: 20px; height: 10px;"></span>
rRNA Ratio [28s / 18s]:	0.0	Result Flagging Label:	RIN N/A

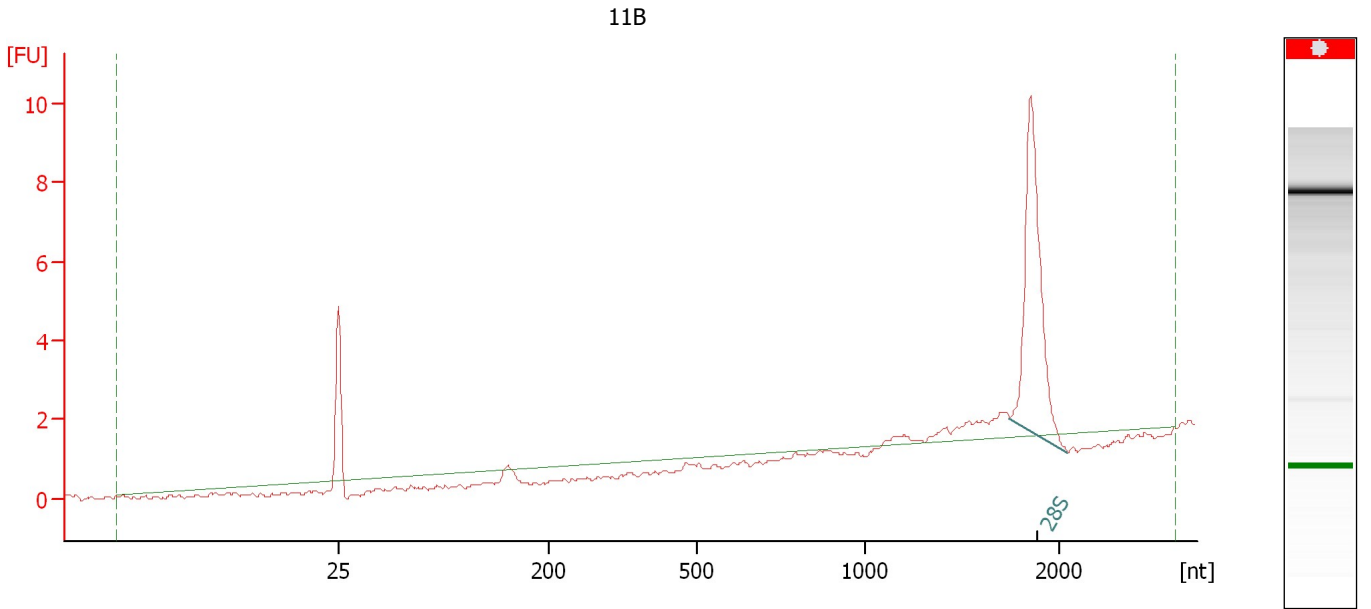
**Fragment table for sample 2 : 9B**

Name	Start Size [nt]	End Size [nt]	Area	% of total Area
18S	1,020	1,226	1.2	2.6

Assay Class: Eukaryote Total RNA Nano  
Data Path: C:\...ents and Settings\Bioanalyzer\2012-02-24\2012-02-24\_002.xad

Created: 2/24/2012 11:44:02 AM  
Modified: 2/24/2012 12:07:55 PM

**Electropherogram Summary Continued ...**



**Overall Results for sample 3 : 11B**

RNA Area:	14.4	RNA Integrity Number (RIN):	N/A (B.02.08)
RNA Concentration:	26 ng/μl	Result Flagging Color:	<span style="background-color: #cccccc; border: 1px solid black; display: inline-block; width: 20px; height: 10px;"></span>
rRNA Ratio [28s / 18s]:	0.0	Result Flagging Label:	RIN N/A

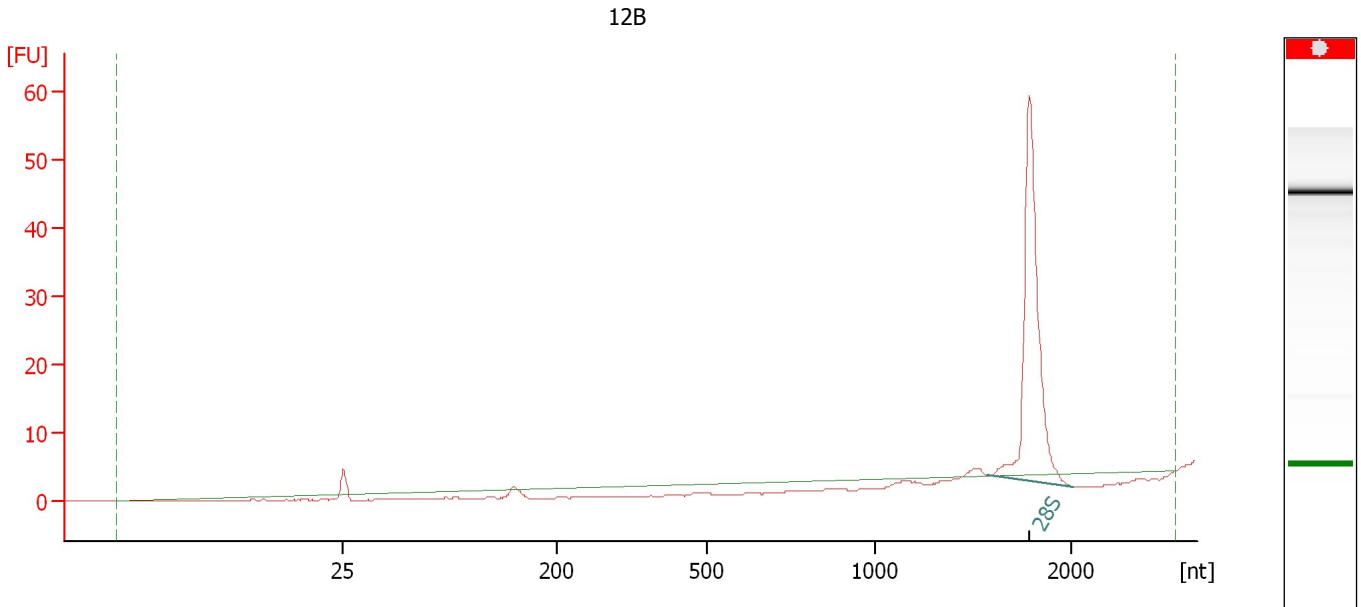
**Fragment table for sample 3 : 11B**

Name	Start Size [nt]	End Size [nt]	Area	% of total Area
28S	1,741	2,116	11.3	78.0

Assay Class: Eukaryote Total RNA Nano  
Data Path: C:\...ents and Settings\Bioanalyzer\2012-02-24\2012-02-24\_002.xad

Created: 2/24/2012 11:44:02 AM  
Modified: 2/24/2012 12:07:55 PM

**Electropherogram Summary Continued ...**



**Overall Results for sample 4 : 12B**

RNA Area:	64.6	RNA Integrity Number (RIN):	N/A (B.02.08)
RNA Concentration:	115 ng/μl	Result Flagging Color:	<span style="background-color: #cccccc; border: 1px solid black; display: inline-block; width: 20px; height: 10px;"></span>
rRNA Ratio [28s / 18s]:	0.0	Result Flagging Label:	RIN N/A

**Fragment table for sample 4 : 12B**

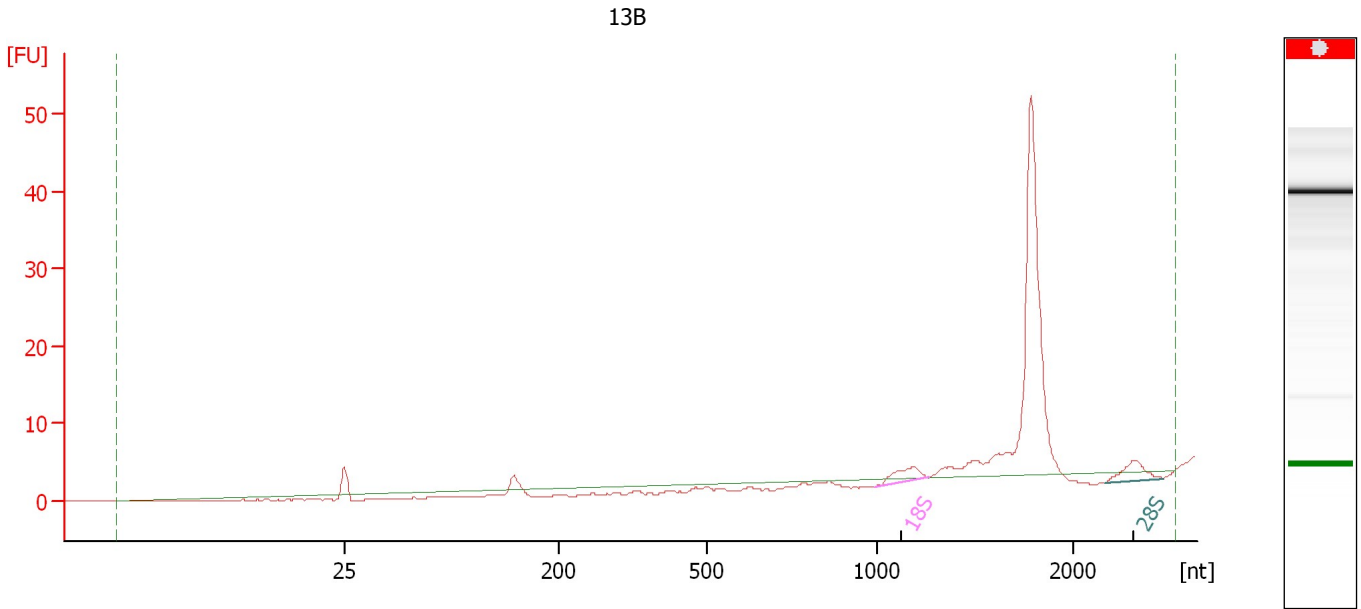
Name	Start Size [nt]	End Size [nt]	Area	% of total Area
28S	1,576	2,019	67.2	104.1



Assay Class: Eukaryote Total RNA Nano  
Data Path: C:\...ents and Settings\Bioanalyzer\2012-02-24\2012-02-24\_002.xad

Created: 2/24/2012 11:44:02 AM  
Modified: 2/24/2012 12:07:55 PM

**Electropherogram Summary Continued ...**



**Overall Results for sample 5 : 13B**

RNA Area:	74.5	RNA Integrity Number (RIN):	N/A (B.02.08)
RNA Concentration:	132 ng/μl	Result Flagging Color:	<span style="background-color: #cccccc; border: 1px solid black; display: inline-block; width: 20px; height: 10px;"></span>
rRNA Ratio [28s / 18s]:	1.1	Result Flagging Label:	RIN N/A

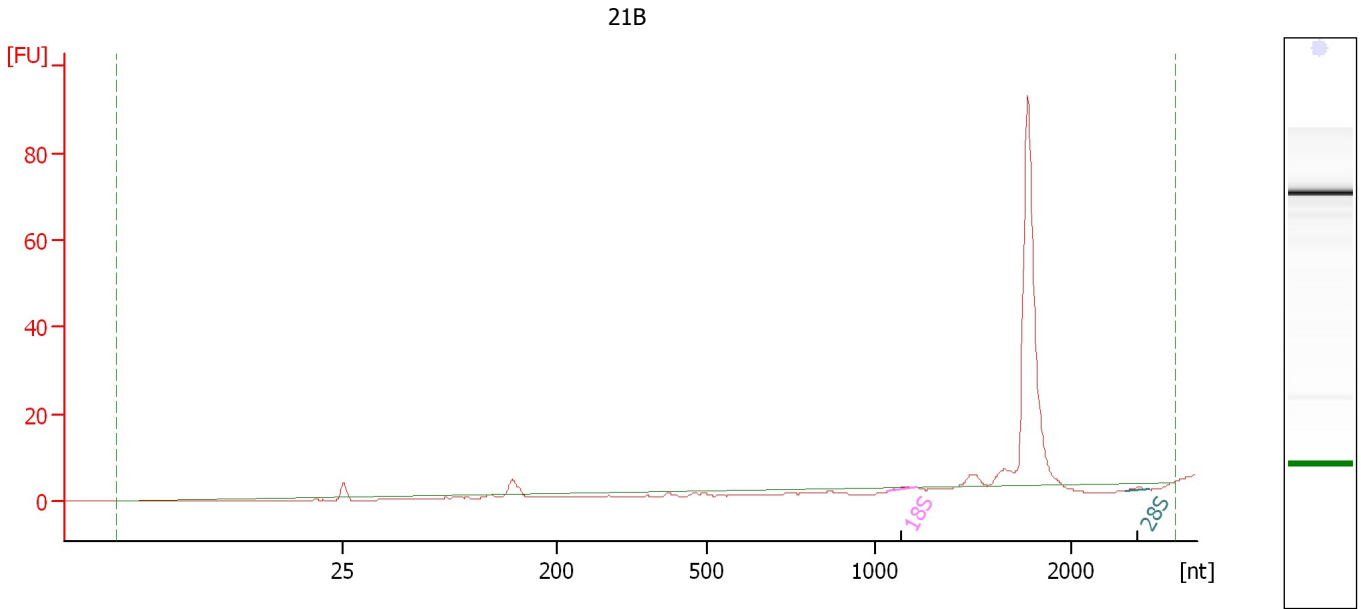
**Fragment table for sample 5 : 13B**

Name	Start Size [nt]	End Size [nt]	Area	% of total Area
18S	992	1,265	4.3	5.8
28S	2,418	3,204	4.6	6.2

Assay Class: Eukaryote Total RNA Nano  
Data Path: C:\...ents and Settings\Bioanalyzer\2012-02-24\2012-02-24\_002.xad

Created: 2/24/2012 11:44:02 AM  
Modified: 2/24/2012 12:07:55 PM

**Electropherogram Summary Continued ...**



**Overall Results for sample 6 : 21B**

RNA Area:	97.9	RNA Integrity Number (RIN):	2.6 (B.02.08)
RNA Concentration:	174 ng/μl	Result Flagging Color:	<span style="background-color: #ccccff; border: 1px solid black; display: inline-block; width: 20px; height: 10px;"></span>
rRNA Ratio [28s / 18s]:	0.7	Result Flagging Label:	RIN: 2.60

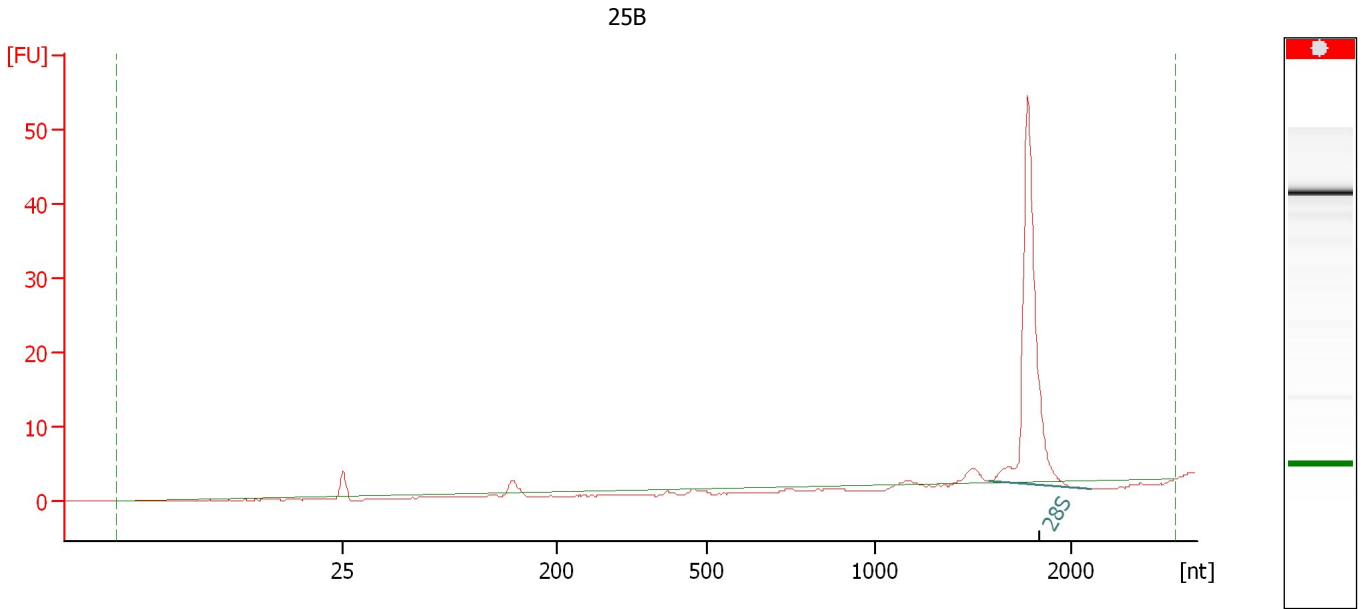
**Fragment table for sample 6 : 21B**

Name	Start Size [nt]	End Size [nt]	Area	% of total Area
18S	1,062	1,215	0.8	0.9
28S	2,721	3,051	0.6	0.6

Assay Class: Eukaryote Total RNA Nano  
Data Path: C:\...ents and Settings\Bioanalyzer\2012-02-24\2012-02-24\_002.xad

Created: 2/24/2012 11:44:02 AM  
Modified: 2/24/2012 12:07:55 PM

**Electropherogram Summary Continued ...**



**Overall Results for sample 7 : 25B**

RNA Area:	60.5	RNA Integrity Number (RIN):	N/A (B.02.08)
RNA Concentration:	107 ng/μl	Result Flagging Color:	<span style="background-color: #cccccc; border: 1px solid black; display: inline-block; width: 20px; height: 10px;"></span>
rRNA Ratio [28s / 18s]:	0.0	Result Flagging Label:	RIN N/A

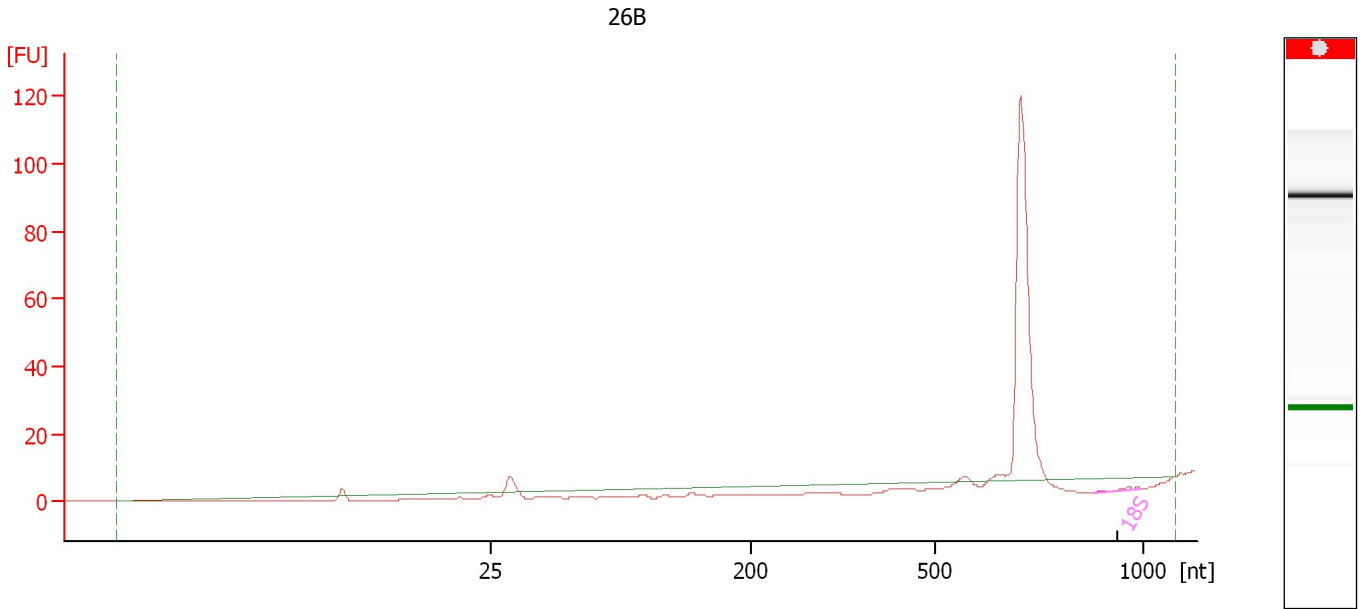
**Fragment table for sample 7 : 25B**

Name	Start Size [nt]	End Size [nt]	Area	% of total Area
28S	1,581	2,263	57.1	94.3

Assay Class: Eukaryote Total RNA Nano  
Data Path: C:\...ents and Settings\Bioanalyzer\2012-02-24\2012-02-24\_002.xad

Created: 2/24/2012 11:44:02 AM  
Modified: 2/24/2012 12:07:55 PM

**Electropherogram Summary Continued ...**



**Overall Results for sample 8 : 26B**

RNA Area:	124.3	RNA Integrity Number (RIN):	N/A (B.02.08)
RNA Concentration:	221 ng/μl	Result Flagging Color:	<span style="background-color: #cccccc; border: 1px solid black; display: inline-block; width: 20px; height: 10px;"></span>
rRNA Ratio [28s / 18s]:	0.0	Result Flagging Label:	RIN N/A

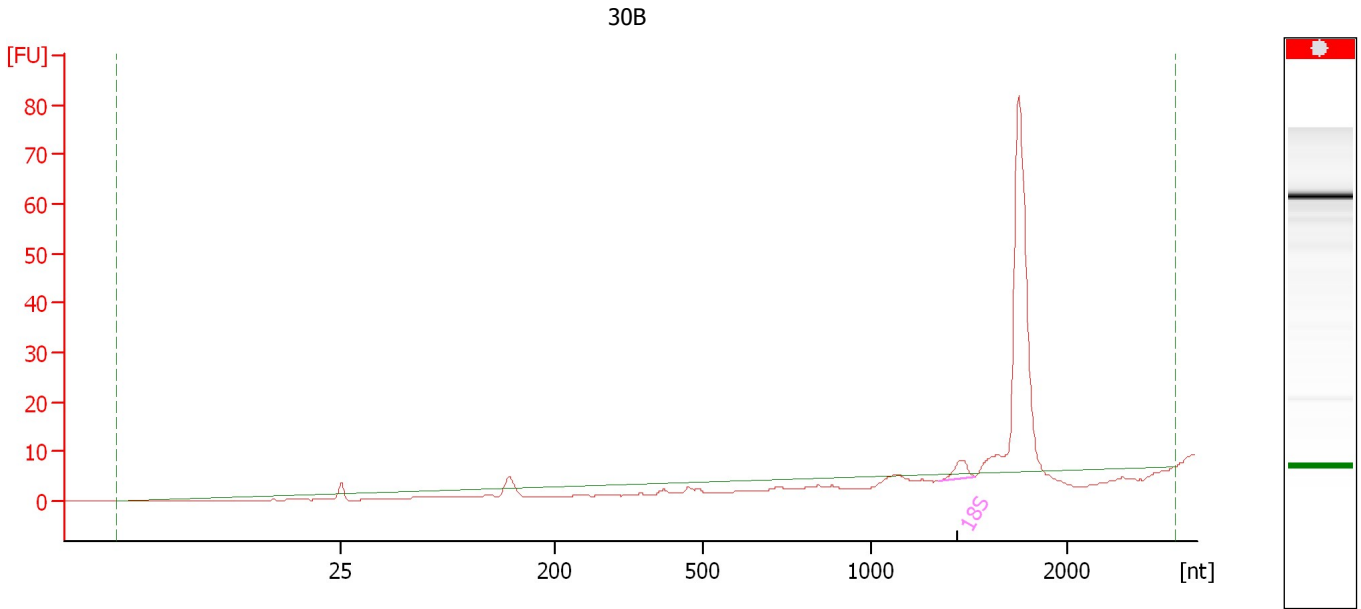
**Fragment table for sample 8 : 26B**

Name	Start Size [nt]	End Size [nt]	Area	% of total Area
18S	882	998	0.9	0.8

Assay Class: Eukaryote Total RNA Nano  
Data Path: C:\...ents and Settings\Bioanalyzer\2012-02-24\2012-02-24\_002.xad

Created: 2/24/2012 11:44:02 AM  
Modified: 2/24/2012 12:07:55 PM

**Electropherogram Summary Continued ...**



**Overall Results for sample 9 : 30B**

RNA Area:	89.8	RNA Integrity Number (RIN):	N/A (B.02.08)
RNA Concentration:	159 ng/μl	Result Flagging Color:	<span style="background-color: #cccccc; border: 1px solid black; display: inline-block; width: 20px; height: 10px;"></span>
rRNA Ratio [28s / 18s]:	0.0	Result Flagging Label:	RIN N/A

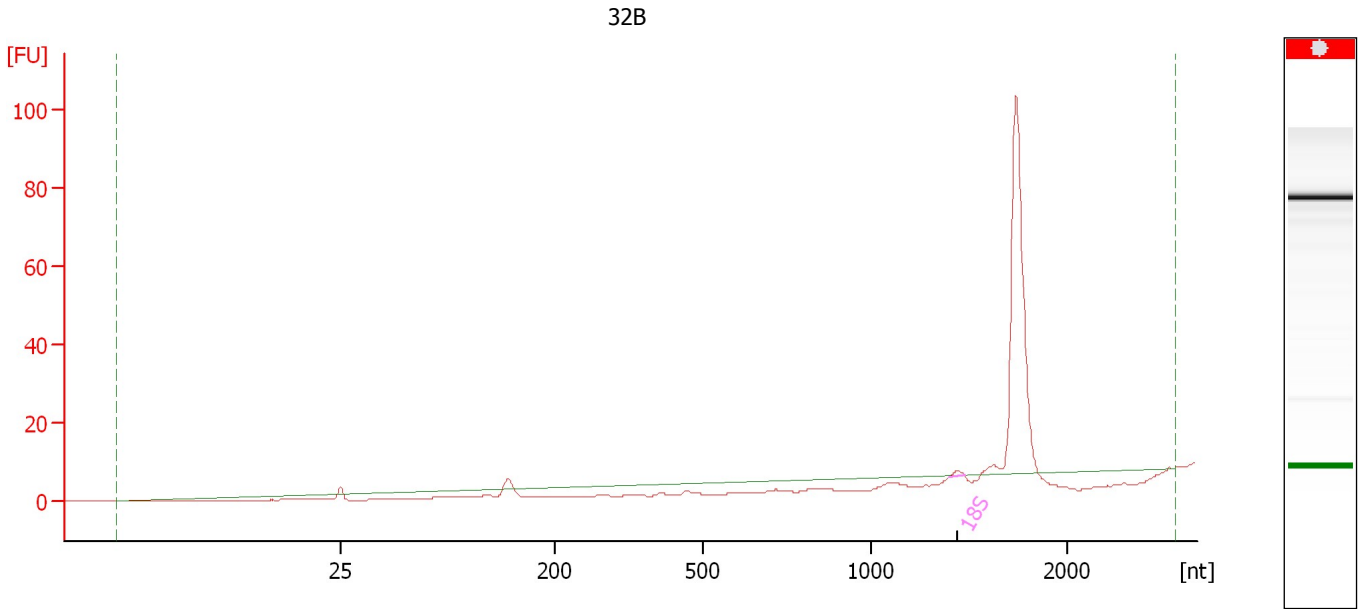
**Fragment table for sample 9 : 30B**

Name	Start Size [nt]	End Size [nt]	Area	% of total Area
18S	1,345	1,532	4.3	4.8

Assay Class: Eukaryote Total RNA Nano  
Data Path: C:\...ents and Settings\Bioanalyzer\2012-02-24\2012-02-24\_002.xad

Created: 2/24/2012 11:44:02 AM  
Modified: 2/24/2012 12:07:55 PM

**Electropherogram Summary Continued ...**



**Overall Results for sample 10 : 32B**

RNA Area:	104.4	RNA Integrity Number (RIN):	N/A (B.02.08)
RNA Concentration:	185 ng/μl	Result Flagging Color:	<span style="background-color: #cccccc; border: 1px solid black; display: inline-block; width: 20px; height: 10px;"></span>
rRNA Ratio [28s / 18s]:	0.0	Result Flagging Label:	RIN N/A

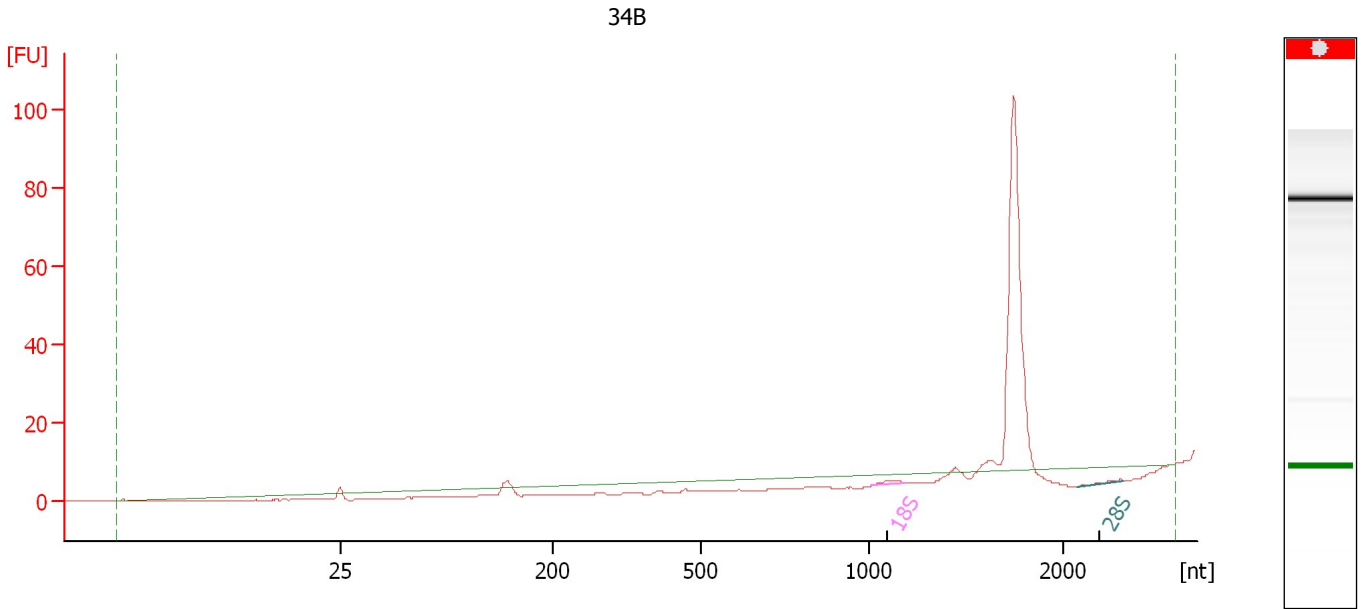
**Fragment table for sample 10 : 32B**

Name	Start Size [nt]	End Size [nt]	Area	% of total Area
18S	1,395	1,477	1.1	1.1

Assay Class: Eukaryote Total RNA Nano  
Data Path: C:\...ents and Settings\Bioanalyzer\2012-02-24\2012-02-24\_002.xad

Created: 2/24/2012 11:44:02 AM  
Modified: 2/24/2012 12:07:55 PM

**Electropherogram Summary Continued ...**



**Overall Results for sample 11 : 34B**

RNA Area:	102.1	RNA Integrity Number (RIN):	N/A (B.02.08)
RNA Concentration:	181 ng/μl	Result Flagging Color:	<span style="background-color: #cccccc; border: 1px solid black; display: inline-block; width: 20px; height: 10px;"></span>
rRNA Ratio [28s / 18s]:	0.3	Result Flagging Label:	RIN N/A

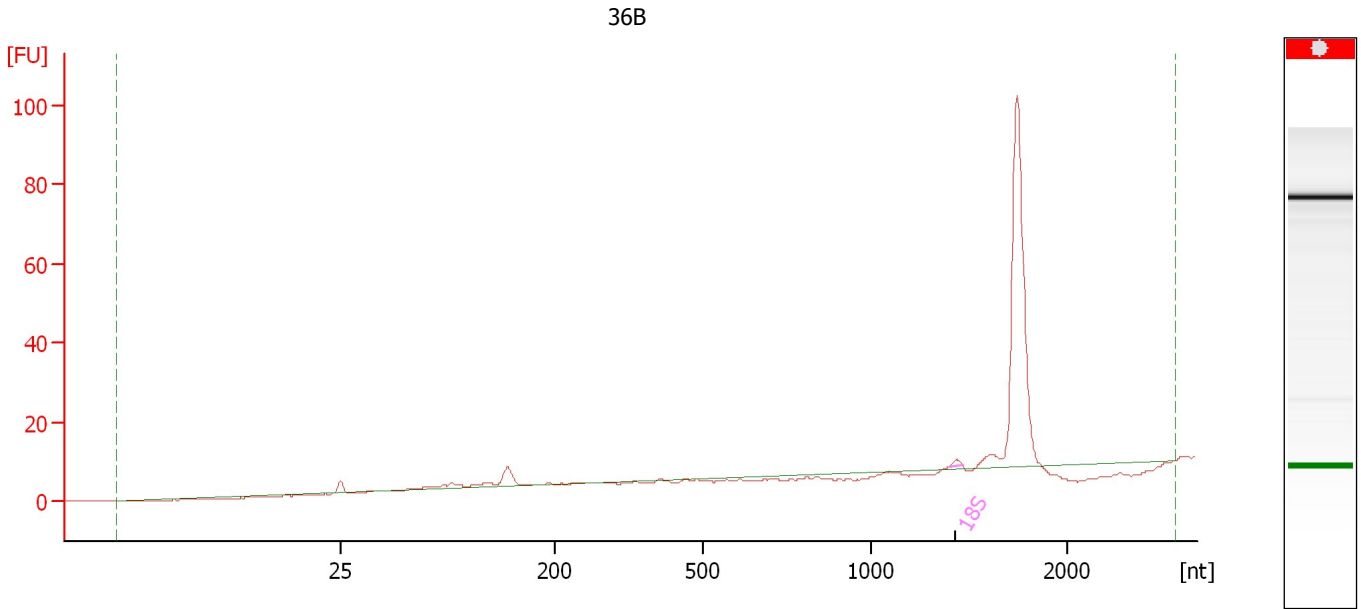
**Fragment table for sample 11 : 34B**

Name	Start Size [nt]	End Size [nt]	Area	% of total Area
18S	1,010	1,180	1.6	1.5
28S	2,183	2,788	0.5	0.5

Assay Class: Eukaryote Total RNA Nano  
Data Path: C:\...ents and Settings\Bioanalyzer\2012-02-24\2012-02-24\_002.xad

Created: 2/24/2012 11:44:02 AM  
Modified: 2/24/2012 12:07:55 PM

**Electropherogram Summary Continued ...**



**Overall Results for sample 12 : 36B**

RNA Area:	120.6	RNA Integrity Number (RIN):	N/A (B.02.08)
RNA Concentration:	214 ng/μl	Result Flagging Color:	<span style="background-color: #cccccc; border: 1px solid black; display: inline-block; width: 20px; height: 10px;"></span>
rRNA Ratio [28s / 18s]:	0.0	Result Flagging Label:	RIN N/A

**Fragment table for sample 12 : 36B**

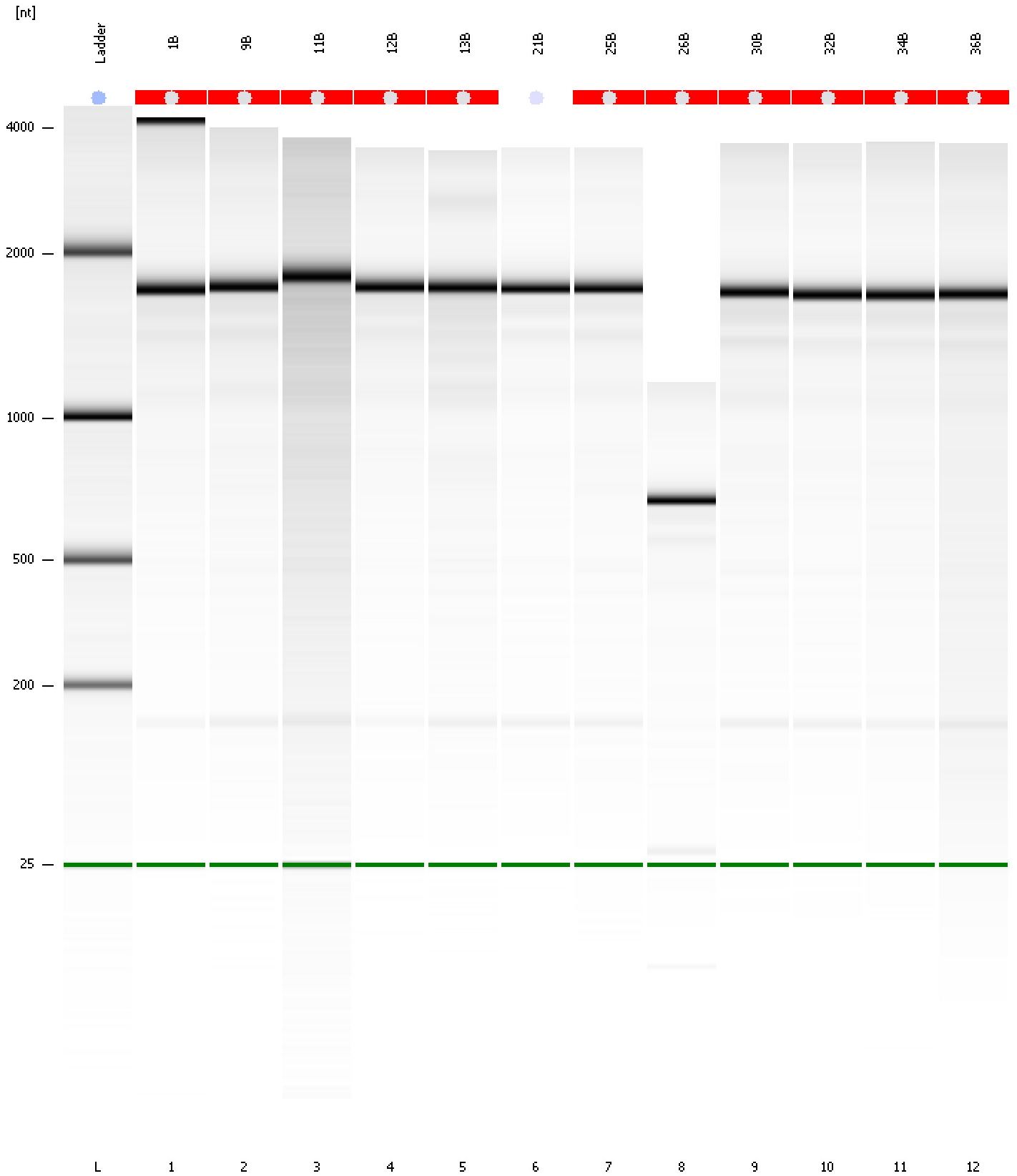
Name	Start Size [nt]	End Size [nt]	Area	% of total Area
18S	1,395	1,466	1.0	0.8



Assay Class: Eukaryote Total RNA Nano  
Data Path: C:\...ents and Settings\Bioanalyzer\2012-02-24\2012-02-24\_002.xad

Created: 2/24/2012 11:44:02 AM  
Modified: 2/24/2012 12:07:55 PM

**Gel Image**

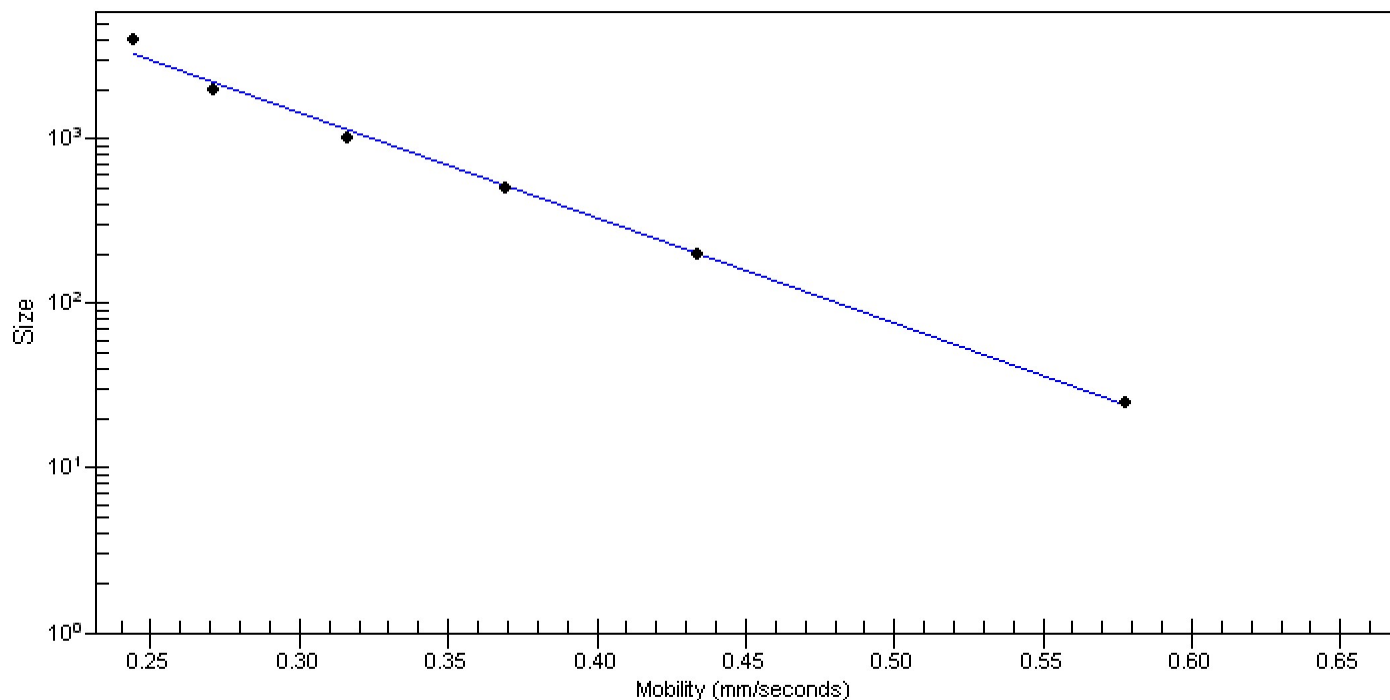


Assay Class: Eukaryote Total RNA Nano  
Data Path: C:\...ents and Settings\Bioanalyzer\2012-02-24\2012-02-24\_002.xad

Created: 2/24/2012 11:44:02 AM  
Modified: 2/24/2012 12:07:55 PM

**Curves**

**Standard Curve**



Assay Class: Eukaryote Total RNA Nano  
 Data Path: C:\...ents and Settings\Bioanalyzer\2012-02-24\2012-02-24\_002.xad

Created: 2/24/2012 11:44:02 AM  
 Modified: 2/24/2012 12:07:55 PM

**Run Logbook**

Description	Number	Source	Category	Sub Category	Time	Time Zone	User	Host
Run ended on port 1 (Number of wells acquired: 13)		Instrument	Run		2/24/2012 12:07:51 PM	(GMT --08:00) Pacific Standard Time	UC Davis	D8XSMGH1
Run started on port 1 (File: C:\Documents and Settings\Bioanalyzer\2012-02-24\2012-02-24_002.xad)		Instrument	Run		2/24/2012 11:44:08 AM	(GMT --08:00) Pacific Standard Time	UC Davis	D8XSMGH1
Product Number : G2938B		Instrument	Run		2/24/2012 11:44:08 AM	(GMT --08:00) Pacific Standard Time	UC Davis	D8XSMGH1
Name :		Instrument	Run		2/24/2012 11:44:08 AM	(GMT --08:00) Pacific Standard Time	UC Davis	D8XSMGH1
Vendor : Agilent Technologies		Instrument	Run		2/24/2012 11:44:08 AM	(GMT --08:00) Pacific Standard Time	UC Davis	D8XSMGH1
Serial# : DE13701086		Instrument	Run		2/24/2012 11:44:08 AM	(GMT --08:00) Pacific Standard Time	UC Davis	D8XSMGH1
Firmware : C.01.069		Instrument	Run		2/24/2012 11:44:08 AM	(GMT --08:00) Pacific Standard Time	UC Davis	D8XSMGH1
Cartridge : Electrode		Instrument	Run		2/24/2012 11:44:08 AM	(GMT --08:00) Pacific Standard Time	UC Davis	D8XSMGH1