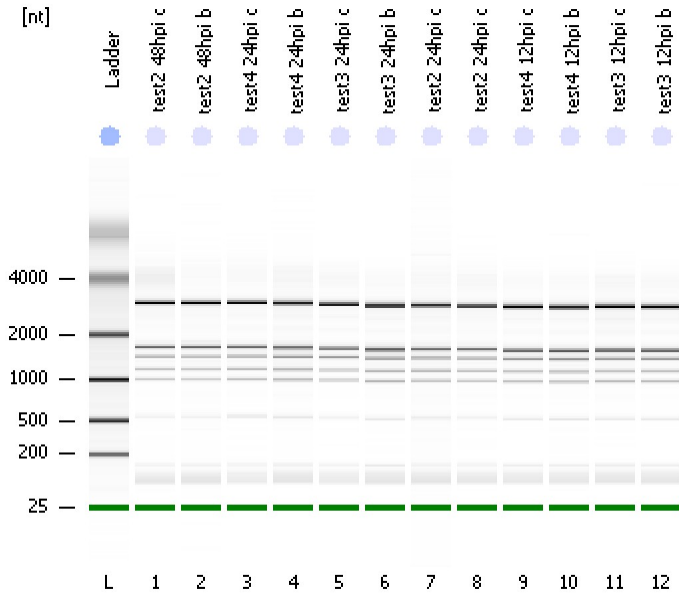


Assay Class: Plant RNA Nano
Data Path: C:\...ents and Settings\Bioanalyzer\2012-02-27\2012-02-27_001.xad

Created: 2/27/2012 9:41:20 AM
Modified: 2/27/2012 10:05:14 AM

Electrophoresis File Run Summary



Instrument Information:

Instrument Name: DE13701086 Firmware: C.01.069
Serial#: DE13701086 Type: G2938B

Assay Information:

Assay Origin Path: C:\Program Files\Agilent\2100 bioanalyzer\2100 expert\assays\RNA\Plant RNA Nano.xsy

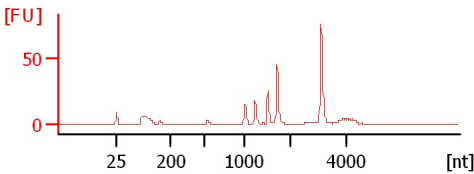
Assay Class: Plant RNA Nano
Version: 1.3
Assay Comments: Total RNA Analysis ng sensitivity (Plant)

© Copyright 2003 - 2009 Agilent Technologies, Inc.

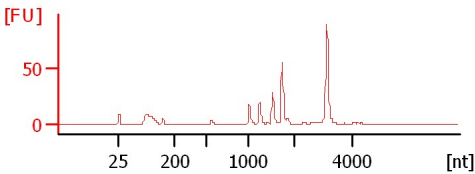
Chip Information:

Chip Lot #:
Reagent Kit Lot #:
Chip Comments:

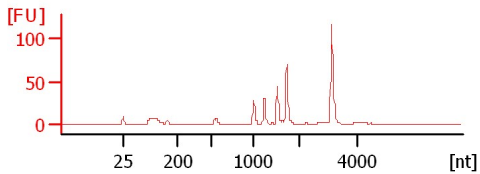
test2 48hpi c
RIN: 7.90



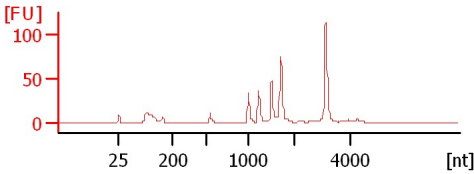
test2 48hpi b
RIN: 7.90



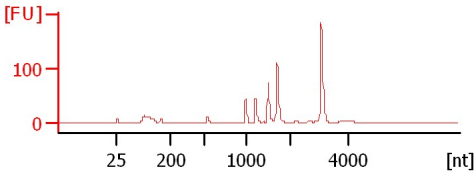
test4 24hpi c
RIN: 7.70



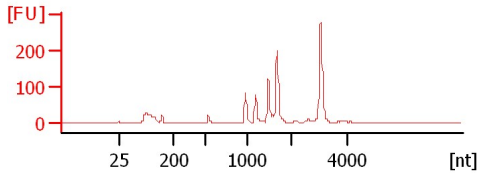
test4 24hpi b
RIN: 7.50



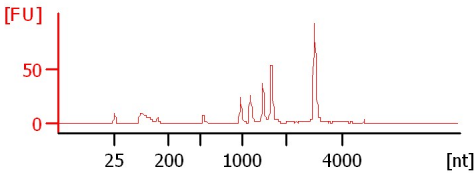
test3 24hpi c
RIN: 7.80



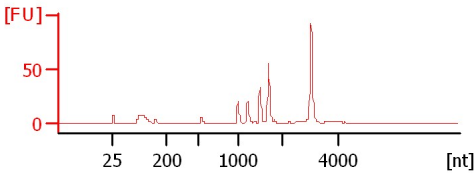
test3 24hpi b
RIN: 7.60



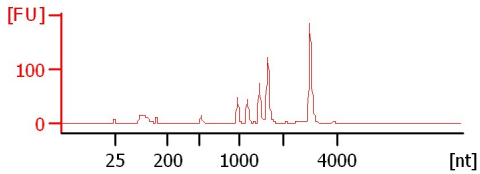
test2 24hpi c
RIN: 7.70



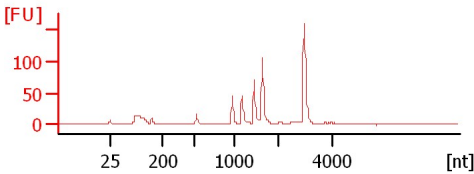
test2 24hpi c
RIN: 7.80



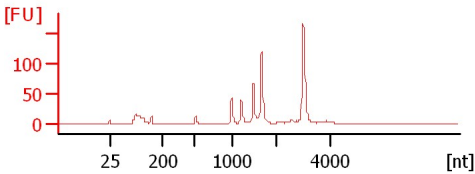
test4 12hpi c
RIN: 7.70



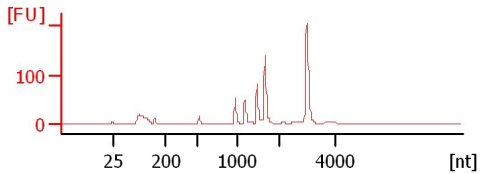
test4 12hpi b
RIN: 7.60



test3 12hpi c
RIN: 7.50



test3 12hpi b
RIN: 7.70



Assay Class: Plant RNA Nano
Data Path: C:\...ents and Settings\Bioanalyzer\2012-02-27\2012-02-27_001.xad

Created: 2/27/2012 9:41:20 AM
Modified: 2/27/2012 10:05:14 AM

Electrophoresis File Run Summary (Chip Summary)

Sample Name	Sample Comment	Status	Result Label	Result Color
test2 48hpi c		✓	RIN: 7.90	
test2 48hpi b		✓	RIN: 7.90	
test4 24hpi c		✓	RIN: 7.70	
test4 24hpi b		✓	RIN: 7.50	
test3 24hpi c		✓	RIN: 7.80	
test3 24hpi b		✓	RIN: 7.60	
test2 24hpi c		✓	RIN: 7.70	
test2 24hpi c		✓	RIN: 7.80	
test4 12hpi c		✓	RIN: 7.70	
test4 12hpi b		✓	RIN: 7.60	
test3 12hpi c		✓	RIN: 7.50	
test3 12hpi b		✓	RIN: 7.70	
Ladder		✓	All Other Samples	

Chip Lot #

Reagent Kit Lot #

Chip Comments :

Assay Class: Plant RNA Nano
Data Path: C:\...ents and Settings\Bioanalyzer\2012-02-27\2012-02-27_001.xad

Created: 2/27/2012 9:41:20 AM
Modified: 2/27/2012 10:05:14 AM

Electrophoresis Assay Details

General Analysis Settings

Number of Available Sample and Ladder Wells (Max.) : 13
Minimum Visible Range [s] : 17
Maximum Visible Range [s] : 70
Start Analysis Time Range [s] : 19
End Analysis Time Range [s] : 69
Ladder Concentration [ng/μl] : 150
Lower Marker Concentration [ng/μl] : 0
Upper Marker Concentration [ng/μl] : 0
Used Lower Marker for Quantitation
Standard Curve Fit is Logarithmic
Show Data Aligned to Lower Marker

Integrator Settings

Integration Start Time [s] : 19
Integration End Time [s] : 69
Slope Threshold : 0.6
Height Threshold [FU] : 0.2
Area Threshold : 0.1
Width Threshold [s] : 0.2
Baseline Plateau [s] : 6

Filter Settings

Filter Width [s] : 0.5
Polynomial Order : 4

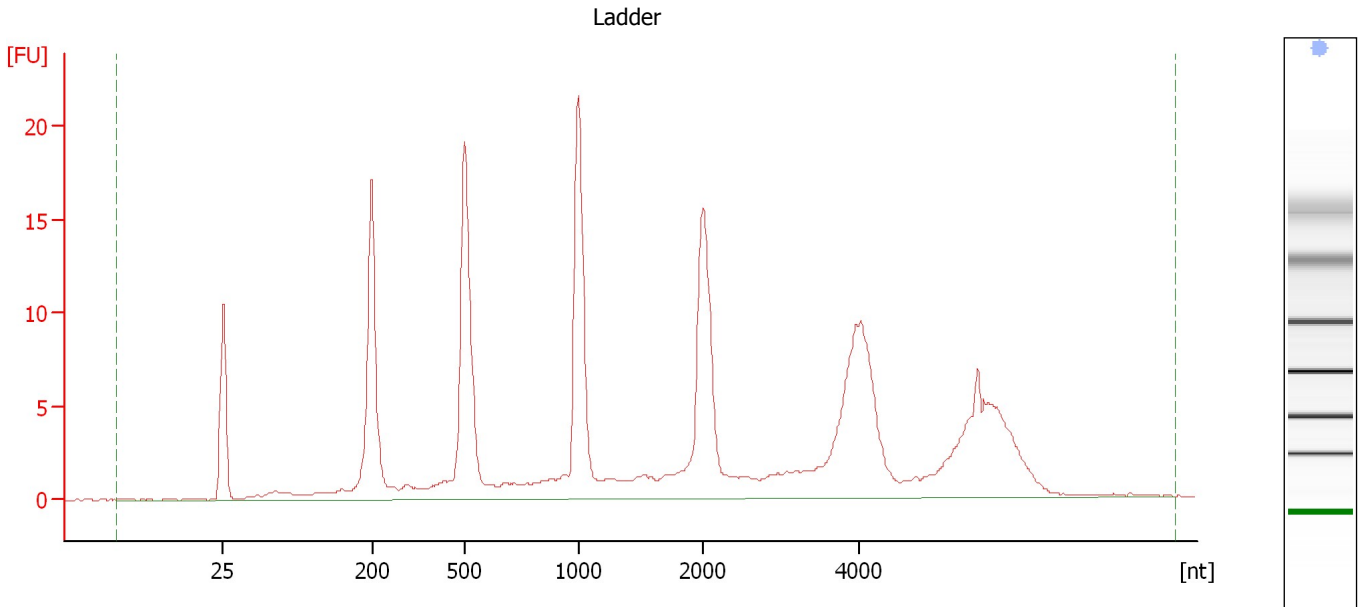
Ladder

Ladder Peak	Size
1	25
2	200
3	500
4	1000
5	2000
6	4000

Assay Class: Plant RNA Nano
Data Path: C:\...ents and Settings\Bioanalyzer\2012-02-27\2012-02-27_001.xad

Created: 2/27/2012 9:41:20 AM
Modified: 2/27/2012 10:05:14 AM

Electropherogram Summary



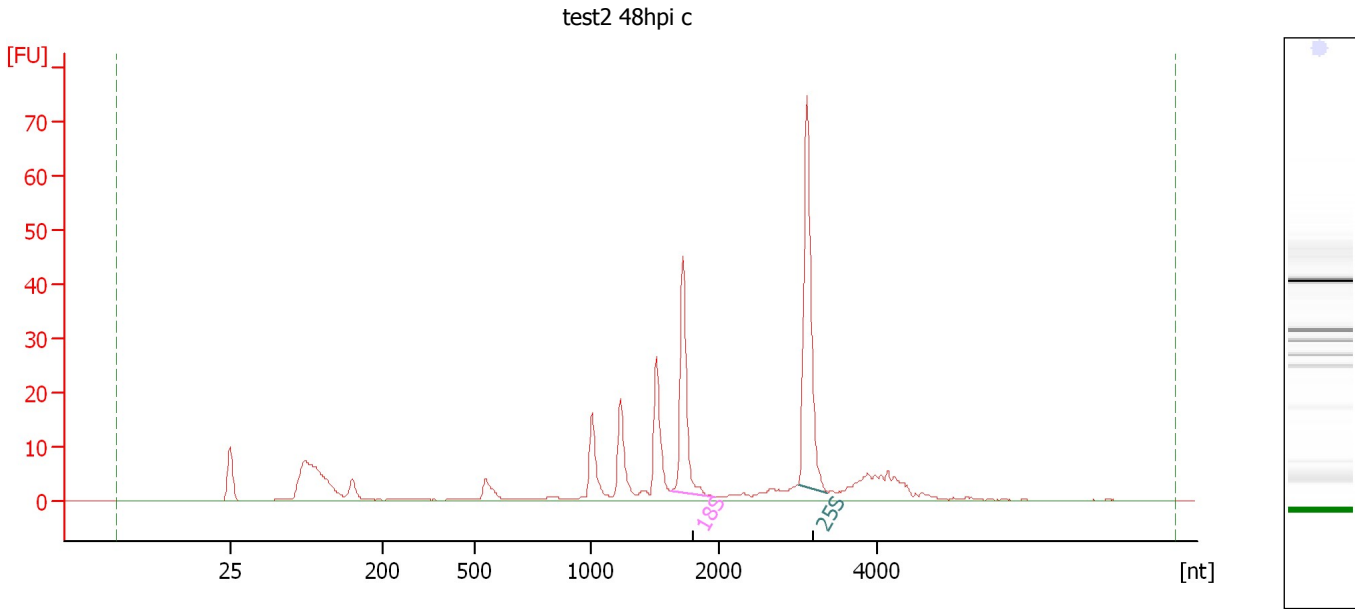
Overall Results for Ladder

RNA Area:	213.8	Result Flagging Color:	
RNA Concentration:	150 ng/μl	Result Flagging Label:	All Other Samples

Assay Class: Plant RNA Nano
Data Path: C:\...ents and Settings\Bioanalyzer\2012-02-27\2012-02-27_001.xad

Created: 2/27/2012 9:41:20 AM
Modified: 2/27/2012 10:05:14 AM

Electropherogram Summary Continued ...



Overall Results for sample 1 : test2 48hpi c

RNA Area: 255.1 RNA Integrity Number (RIN): 7.9 (B.02.08)
RNA Concentration: 179 ng/μl Result Flagging Color:
rRNA Ratio [25s / 18s]: 1.6 Result Flagging Label: RIN: 7.90

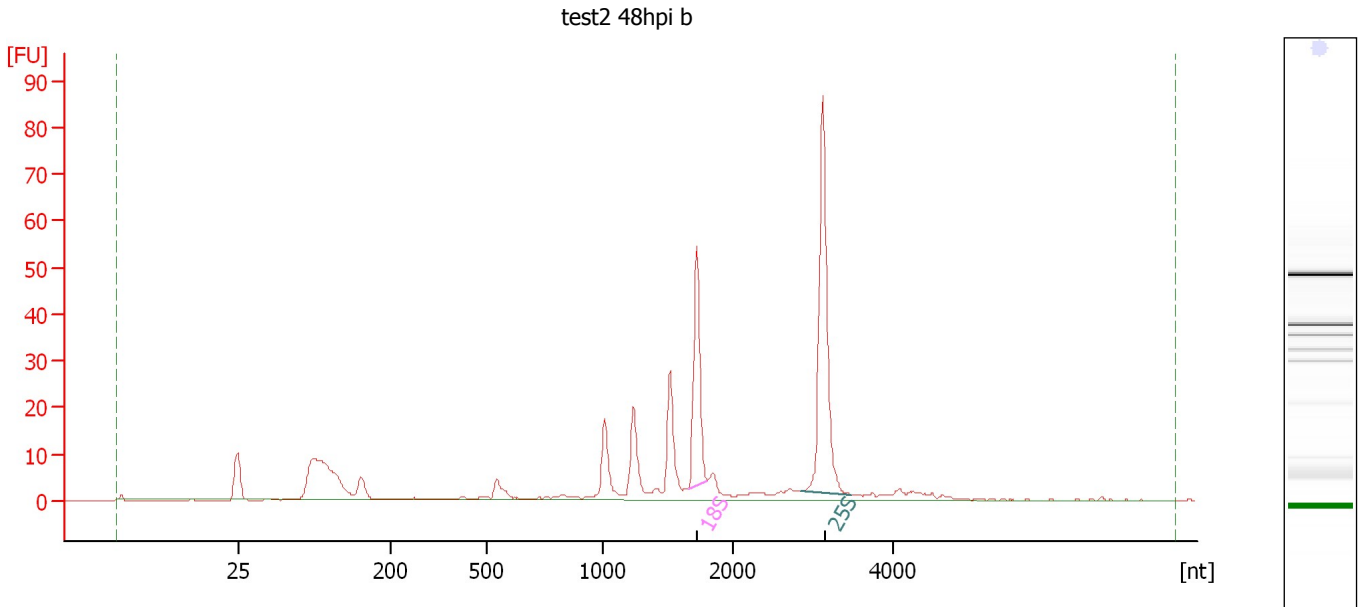
Fragment table for sample 1 : test2 48hpi c

Name	Start Size [nt]	End Size [nt]	Area	% of total Area
18S	1,633	1,970	34.5	13.5
25S	3,020	3,385	55.2	21.6

Assay Class: Plant RNA Nano
Data Path: C:\...ents and Settings\Bioanalyzer\2012-02-27\2012-02-27_001.xad

Created: 2/27/2012 9:41:20 AM
Modified: 2/27/2012 10:05:14 AM

Electropherogram Summary Continued ...



Setpoint Deviations for sample 2 : test2 48hpi b

Height Threshold [FU] : 10

Overall Results for sample 2 : test2 48hpi b

RNA Area: 279.1 RNA Integrity Number (RIN): 7.9 (B.02.08)
RNA Concentration: 196 ng/μl Result Flagging Color:
rRNA Ratio [25s / 18s]: 1.9 Result Flagging Label: RIN: 7.90

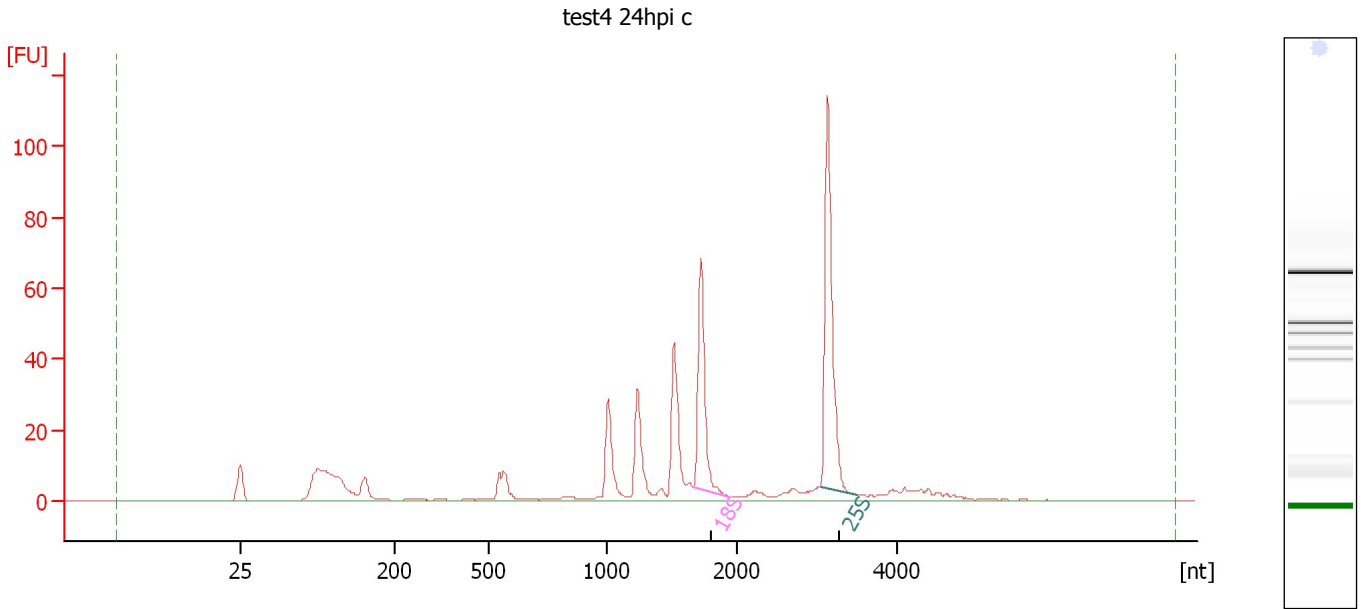
Fragment table for sample 2 : test2 48hpi b

Name	Start Size [nt]	End Size [nt]	Area	% of total Area
18S	1,660	1,809	37.0	13.3
25S	2,867	3,479	69.2	24.8

Assay Class: Plant RNA Nano
Data Path: C:\...ents and Settings\Bioanalyzer\2012-02-27\2012-02-27_001.xad

Created: 2/27/2012 9:41:20 AM
Modified: 2/27/2012 10:05:14 AM

Electropherogram Summary Continued ...



Overall Results for sample 3 : test4 24hpi c

RNA Area: 373.3 RNA Integrity Number (RIN): 7.7 (B.02.08)
RNA Concentration: 262 ng/μl Result Flagging Color:
rRNA Ratio [25s / 18s]: 1.6 Result Flagging Label: RIN: 7.70

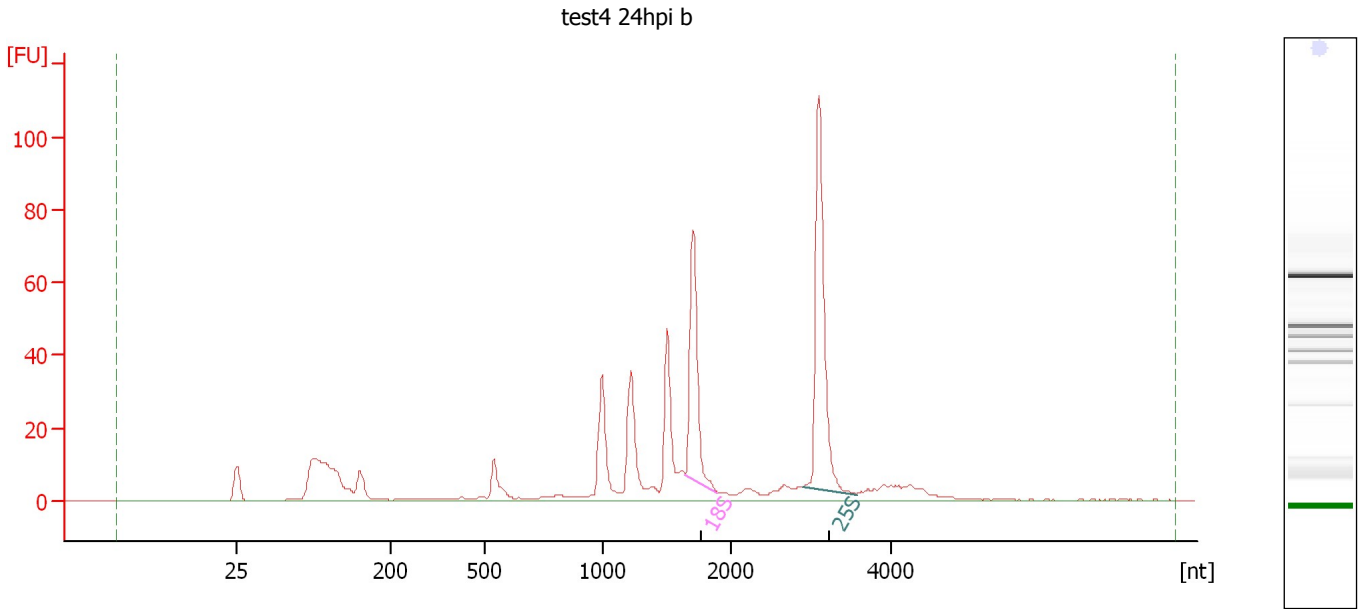
Fragment table for sample 3 : test4 24hpi c

Name	Start Size [nt]	End Size [nt]	Area	% of total Area
18S	1,662	1,936	51.7	13.8
25S	3,038	3,502	84.7	22.7

Assay Class: Plant RNA Nano
Data Path: C:\...ents and Settings\Bioanalyzer\2012-02-27\2012-02-27_001.xad

Created: 2/27/2012 9:41:20 AM
Modified: 2/27/2012 10:05:14 AM

Electropherogram Summary Continued ...



Overall Results for sample 4 : test4 24hpi b

RNA Area: 440.7 RNA Integrity Number (RIN): 7.5 (B.02.08)
RNA Concentration: 309 ng/μl Result Flagging Color:
rRNA Ratio [25s / 18s]: 1.6 Result Flagging Label: RIN: 7.50

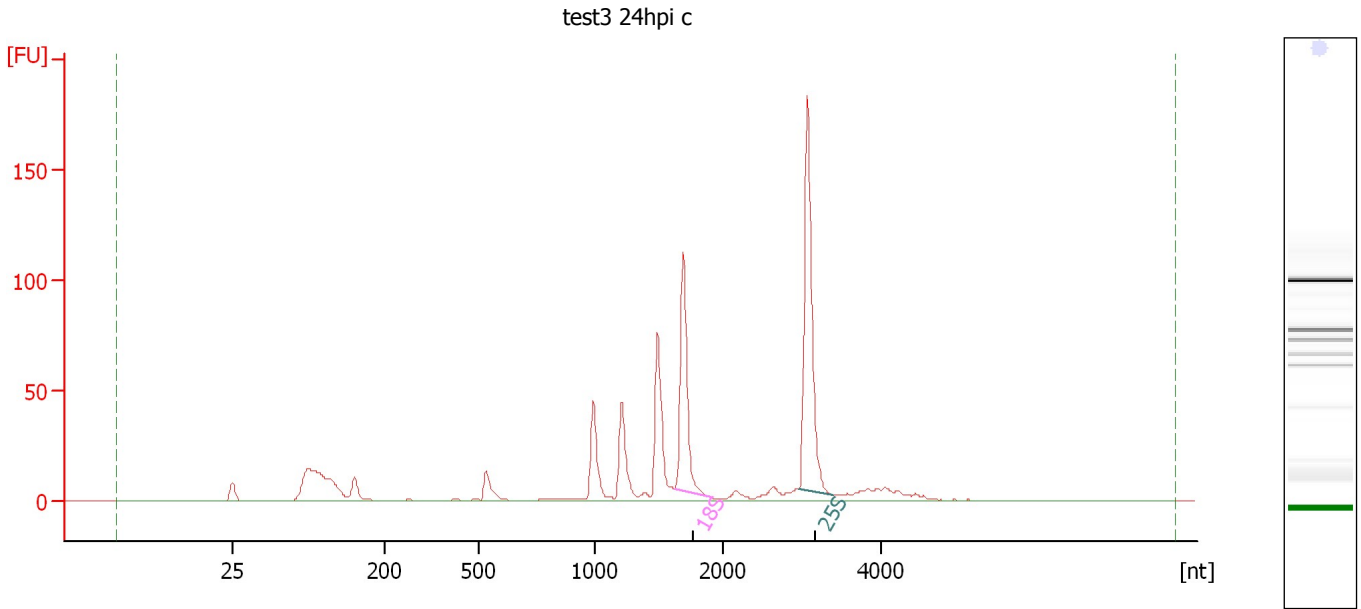
Fragment table for sample 4 : test4 24hpi b

Name	Start Size [nt]	End Size [nt]	Area	% of total Area
18S	1,650	1,900	56.5	12.8
25S	2,907	3,575	91.1	20.7

Assay Class: Plant RNA Nano
Data Path: C:\...ents and Settings\Bioanalyzer\2012-02-27\2012-02-27_001.xad

Created: 2/27/2012 9:41:20 AM
Modified: 2/27/2012 10:05:14 AM

Electropherogram Summary Continued ...



Overall Results for sample 5 : test3 24hpi c

RNA Area: 584.6 RNA Integrity Number (RIN): 7.8 (B.02.08)
RNA Concentration: 410 ng/μl Result Flagging Color:
rRNA Ratio [25s / 18s]: 1.6 Result Flagging Label: RIN: 7.80

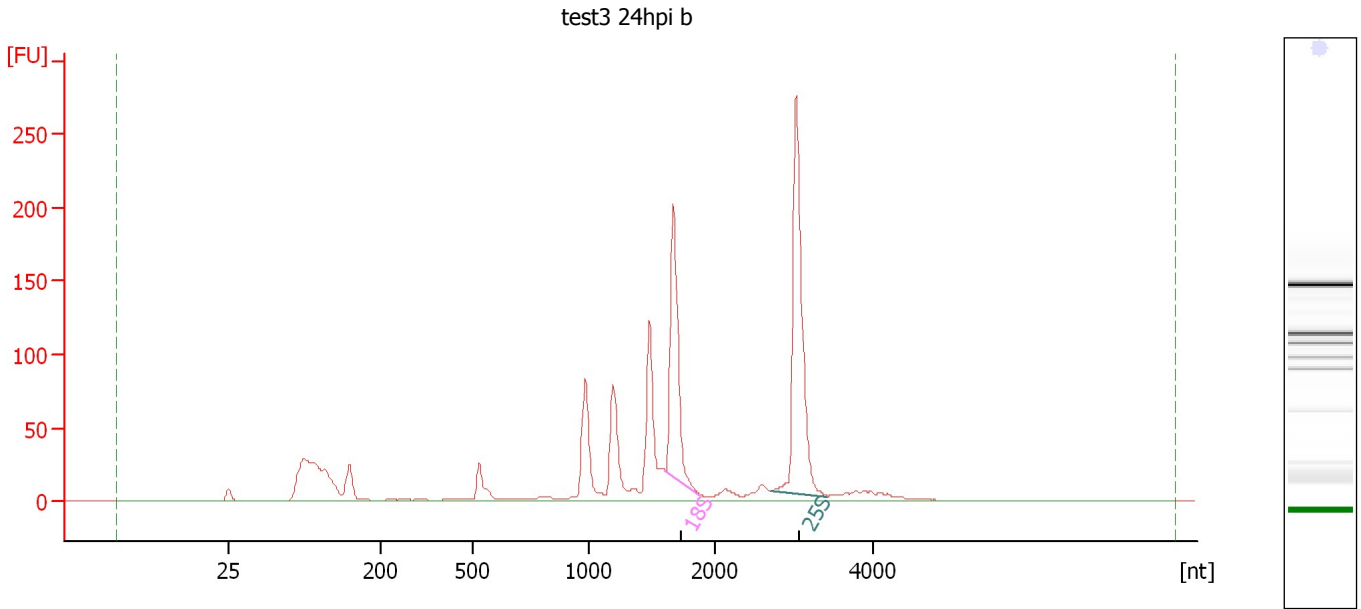
Fragment table for sample 5 : test3 24hpi c

Name	Start Size [nt]	End Size [nt]	Area	% of total Area
18S	1,636	1,905	89.9	15.4
25S	2,978	3,408	140.4	24.0

Assay Class: Plant RNA Nano
Data Path: C:\...ents and Settings\Bioanalyzer\2012-02-27\2012-02-27_001.xad

Created: 2/27/2012 9:41:20 AM
Modified: 2/27/2012 10:05:14 AM

Electropherogram Summary Continued ...



Overall Results for sample 6 : test3 24hpi b

RNA Area: 1,114.6 RNA Integrity Number (RIN): 7.6 (B.02.08)
RNA Concentration: 782 ng/μl Result Flagging Color:
rRNA Ratio [25s / 18s]: 1.6 Result Flagging Label: RIN: 7.60

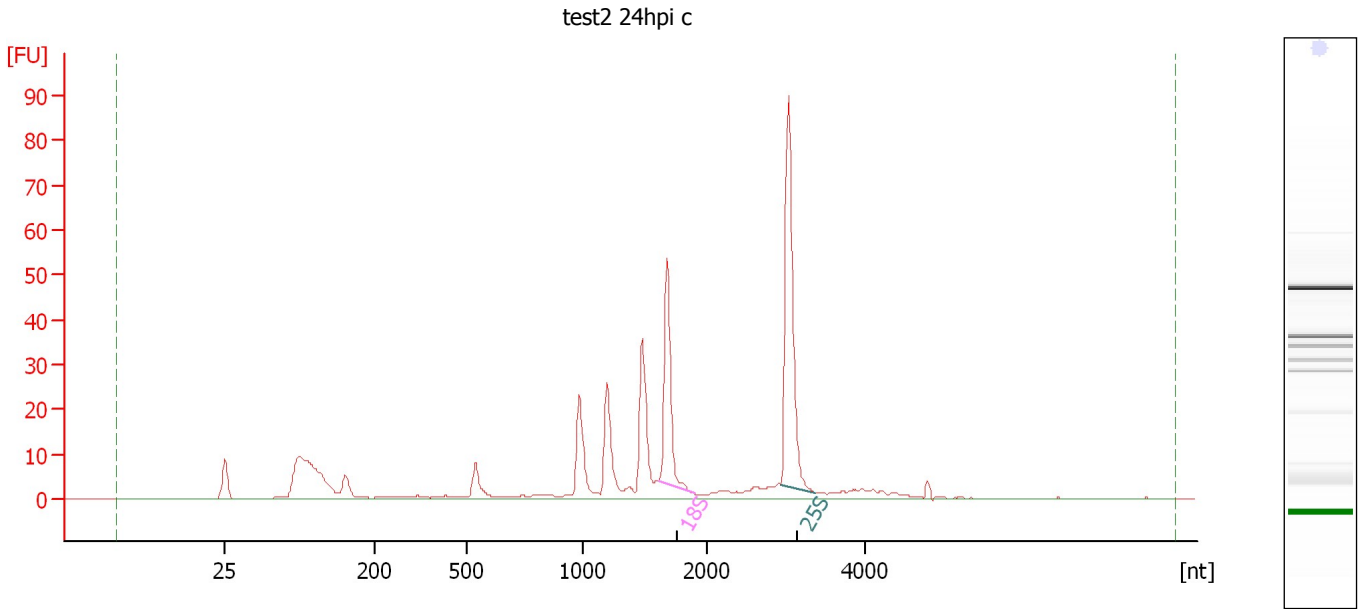
Fragment table for sample 6 : test3 24hpi b

Name	Start Size [nt]	End Size [nt]	Area	% of total Area
18S	1,598	1,868	165.9	14.9
25S	2,696	3,413	263.7	23.7

Assay Class: Plant RNA Nano
Data Path: C:\...ents and Settings\Bioanalyzer\2012-02-27\2012-02-27_001.xad

Created: 2/27/2012 9:41:20 AM
Modified: 2/27/2012 10:05:14 AM

Electropherogram Summary Continued ...



Overall Results for sample 7 : test2 24hpi c

RNA Area: 310.4 RNA Integrity Number (RIN): 7.7 (B.02.08)
RNA Concentration: 218 ng/μl Result Flagging Color:
rRNA Ratio [25s / 18s]: 1.7 Result Flagging Label: RIN: 7.70

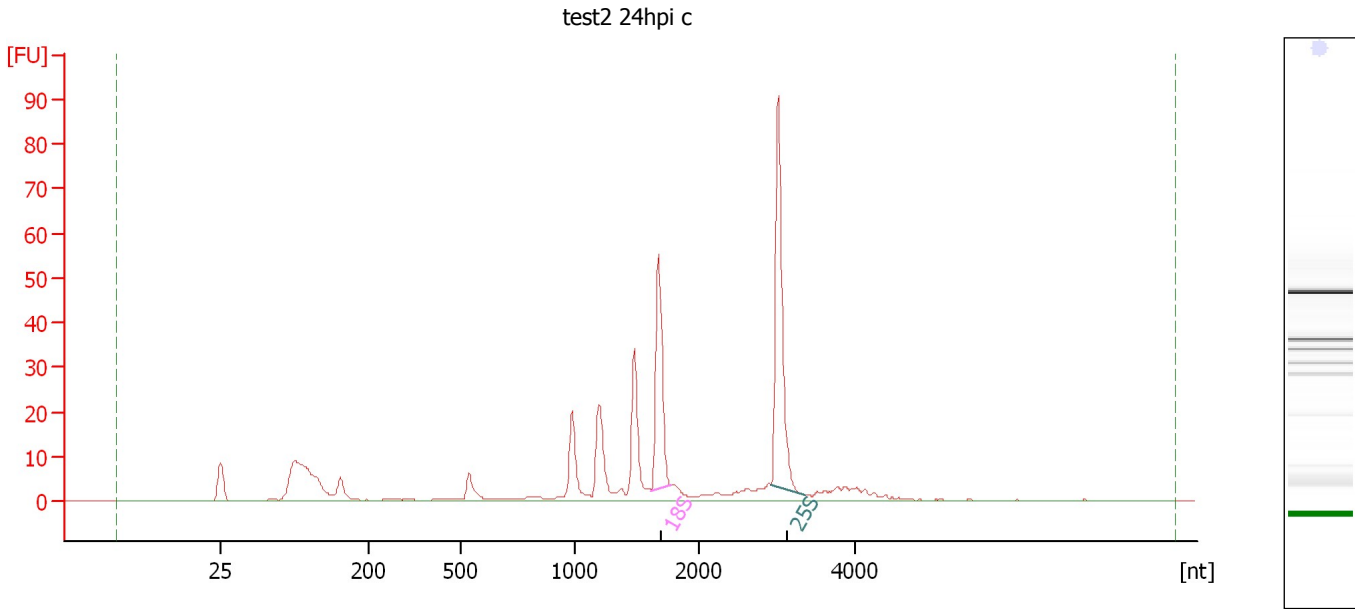
Fragment table for sample 7 : test2 24hpi c

Name	Start Size [nt]	End Size [nt]	Area	% of total Area
18S	1,618	1,890	40.2	13.0
25S	2,929	3,366	66.7	21.5

Assay Class: Plant RNA Nano
Data Path: C:\...ents and Settings\Bioanalyzer\2012-02-27\2012-02-27_001.xad

Created: 2/27/2012 9:41:20 AM
Modified: 2/27/2012 10:05:14 AM

Electropherogram Summary Continued ...



Overall Results for sample 8 : test2 24hpi c

RNA Area: 291.4 RNA Integrity Number (RIN): 7.8 (B.02.08)
RNA Concentration: 204 ng/μl Result Flagging Color:
rRNA Ratio [25s / 18s]: 1.7 Result Flagging Label: RIN: 7.80

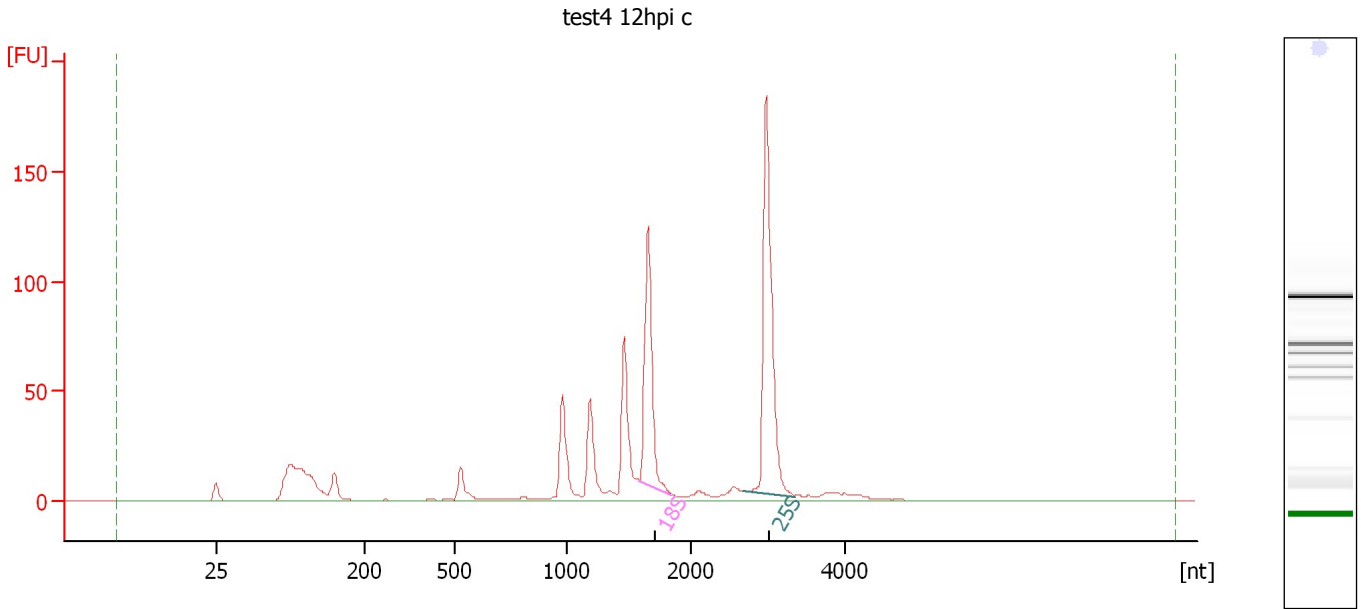
Fragment table for sample 8 : test2 24hpi c

Name	Start Size [nt]	End Size [nt]	Area	% of total Area
18S	1,612	1,775	38.9	13.3
25S	2,919	3,345	65.9	22.6

Assay Class: Plant RNA Nano
Data Path: C:\...ents and Settings\Bioanalyzer\2012-02-27\2012-02-27_001.xad

Created: 2/27/2012 9:41:20 AM
Modified: 2/27/2012 10:05:14 AM

Electropherogram Summary Continued ...



Overall Results for sample 9 : test4 12hpi c

RNA Area: 653.7 RNA Integrity Number (RIN): 7.7 (B.02.08)
RNA Concentration: 459 ng/μl Result Flagging Color:
rRNA Ratio [25s / 18s]: 1.6 Result Flagging Label: RIN: 7.70

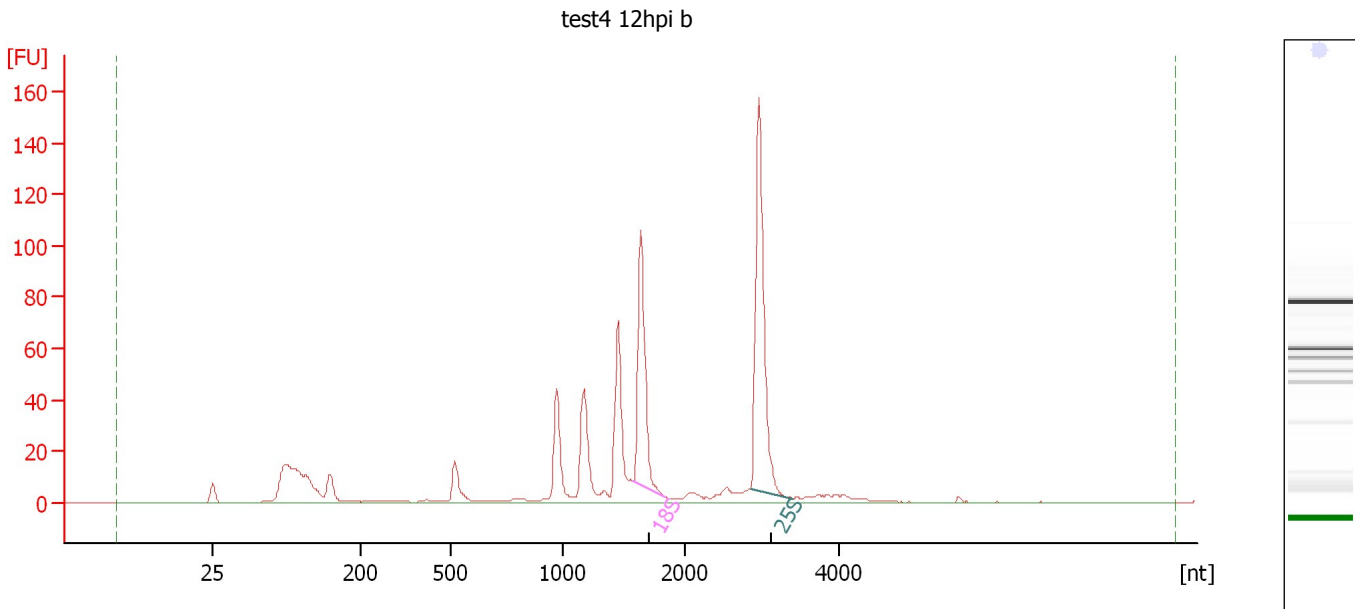
Fragment table for sample 9 : test4 12hpi c

Name	Start Size [nt]	End Size [nt]	Area	% of total Area
18S	1,580	1,840	100.7	15.4
25S	2,672	3,338	163.8	25.1

Assay Class: Plant RNA Nano
 Data Path: C:\...ents and Settings\Bioanalyzer\2012-02-27\2012-02-27_001.xad

Created: 2/27/2012 9:41:20 AM
 Modified: 2/27/2012 10:05:14 AM

Electropherogram Summary Continued ...



Overall Results for sample 10 : test4 12hpi b

RNA Area:	567.1	RNA Integrity Number (RIN):	7.6 (B.02.08)
RNA Concentration:	398 ng/μl	Result Flagging Color:	
rRNA Ratio [25s / 18s]:	1.6	Result Flagging Label:	RIN: 7.60

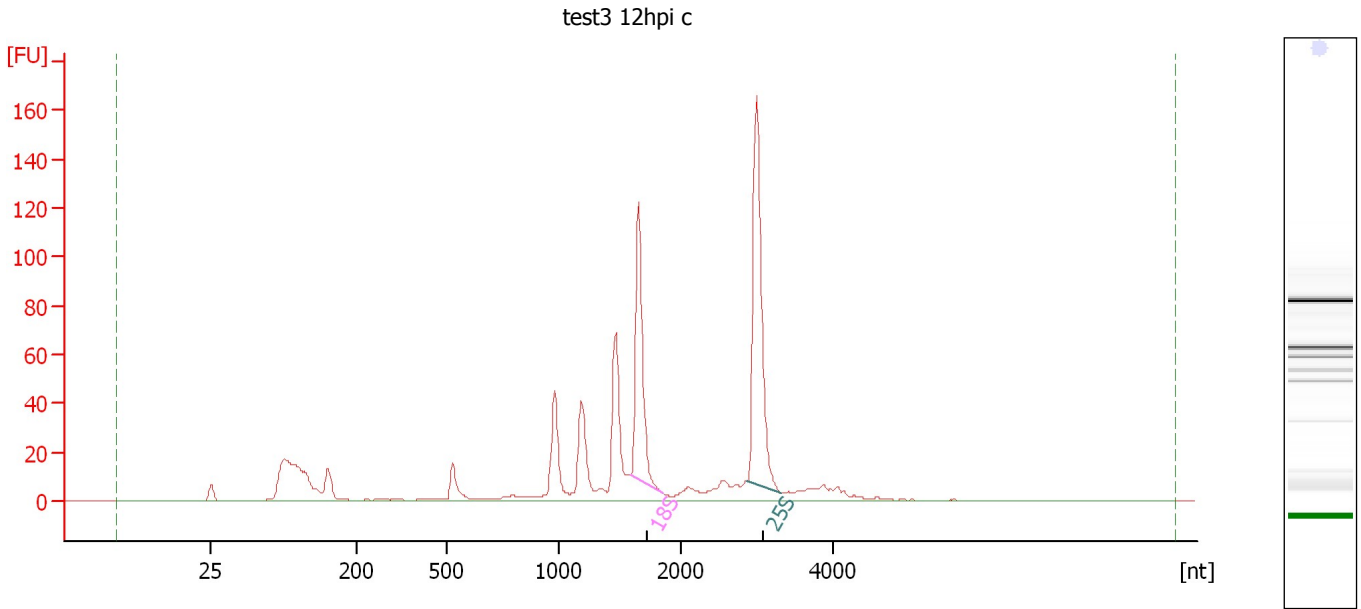
Fragment table for sample 10 : test4 12hpi b

Name	Start Size [nt]	End Size [nt]	Area	% of total Area
18S	1,575	1,837	85.2	15.0
25S	2,855	3,399	136.3	24.0

Assay Class: Plant RNA Nano
Data Path: C:\...ents and Settings\Bioanalyzer\2012-02-27\2012-02-27_001.xad

Created: 2/27/2012 9:41:20 AM
Modified: 2/27/2012 10:05:14 AM

Electropherogram Summary Continued ...



Overall Results for sample 11 : test3 12hpi c

RNA Area: 660.8 RNA Integrity Number (RIN): 7.5 (B.02.08)
RNA Concentration: 464 ng/μl Result Flagging Color:
rRNA Ratio [25s / 18s]: 1.5 Result Flagging Label: RIN: 7.50

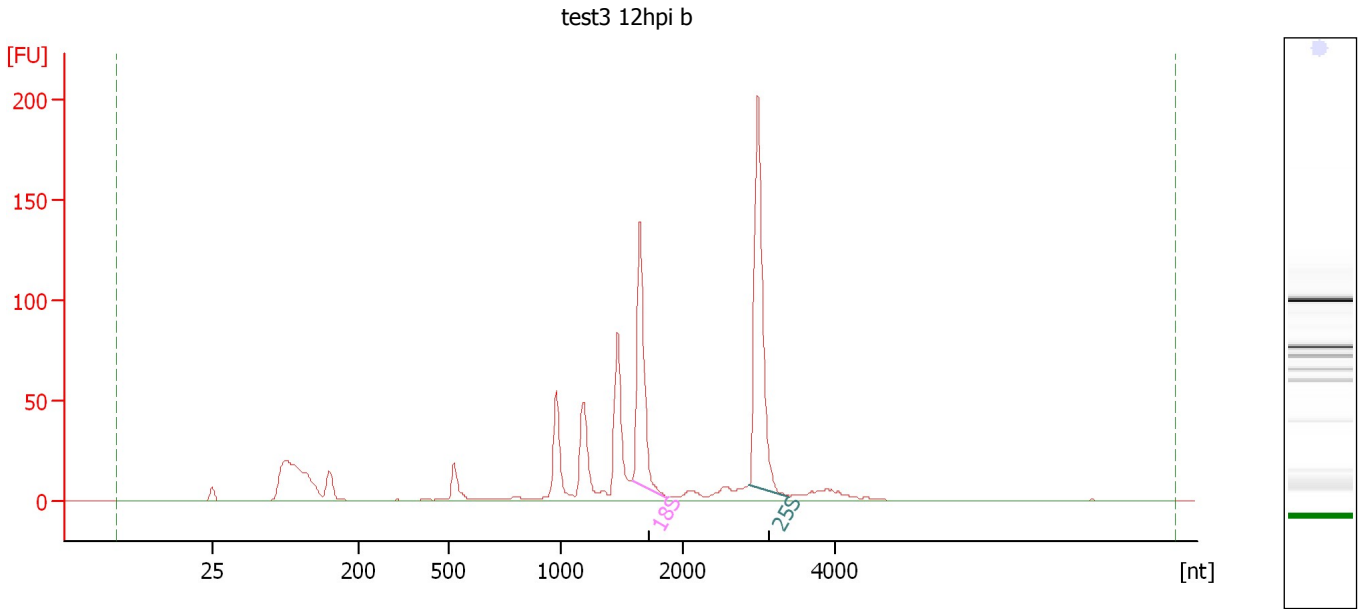
Fragment table for sample 11 : test3 12hpi c

Name	Start Size [nt]	End Size [nt]	Area	% of total Area
18S	1,590	1,843	98.0	14.8
25S	2,870	3,319	142.8	21.6

Assay Class: Plant RNA Nano
Data Path: C:\...ents and Settings\Bioanalyzer\2012-02-27\2012-02-27_001.xad

Created: 2/27/2012 9:41:20 AM
Modified: 2/27/2012 10:05:14 AM

Electropherogram Summary Continued ...



Overall Results for sample 12 : test3 12hpi b

RNA Area: 744.5 RNA Integrity Number (RIN): 7.7 (B.02.08)
RNA Concentration: 522 ng/μl Result Flagging Color:
rRNA Ratio [25s / 18s]: 1.5 Result Flagging Label: RIN: 7.70

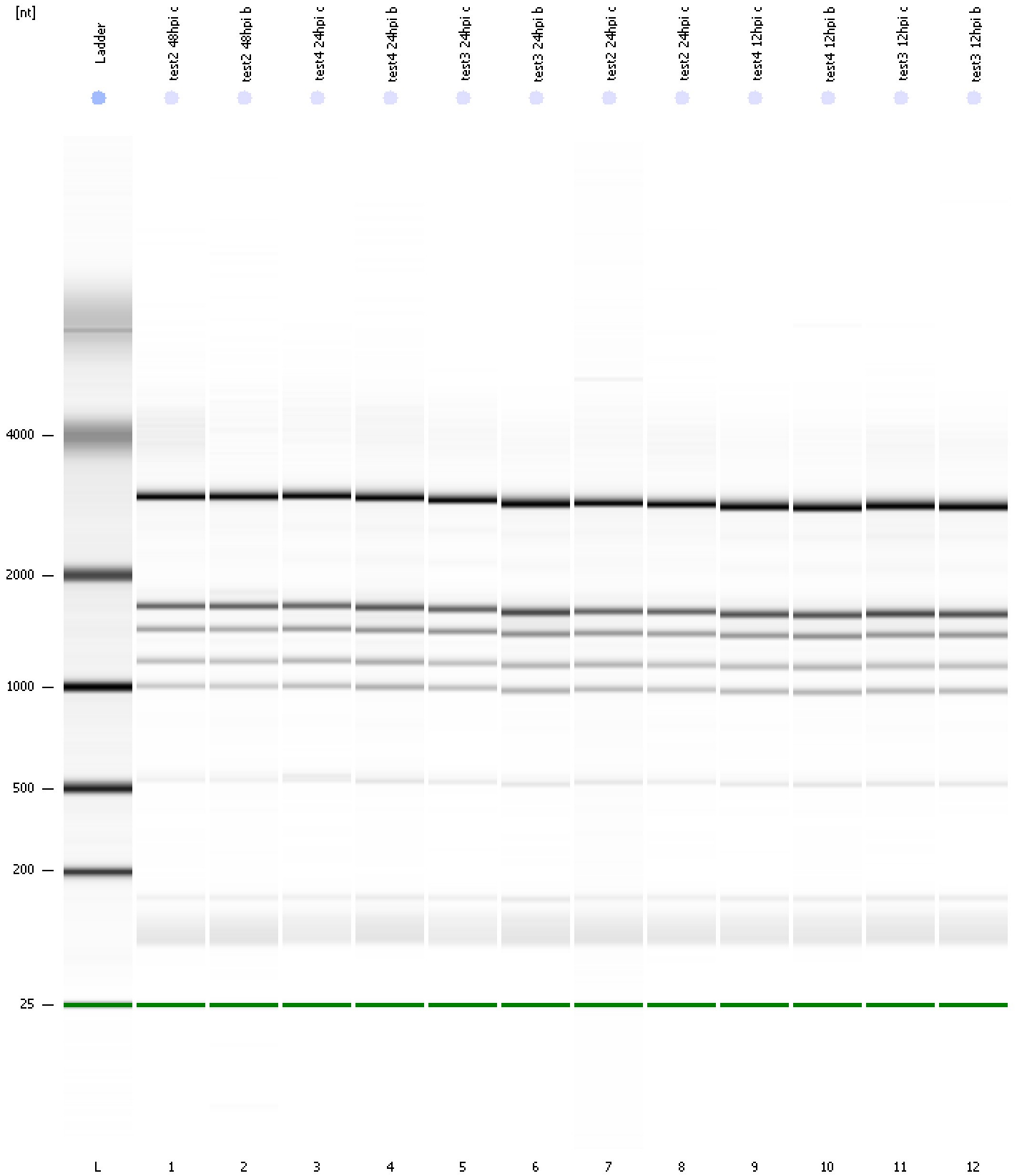
Fragment table for sample 12 : test3 12hpi b

Name	Start Size [nt]	End Size [nt]	Area	% of total Area
18S	1,582	1,853	113.2	15.2
25S	2,869	3,387	172.7	23.2

Assay Class: Plant RNA Nano
Data Path: C:\...ents and Settings\Bioanalyzer\2012-02-27\2012-02-27_001.xad

Created: 2/27/2012 9:41:20 AM
Modified: 2/27/2012 10:05:14 AM

Gel Image

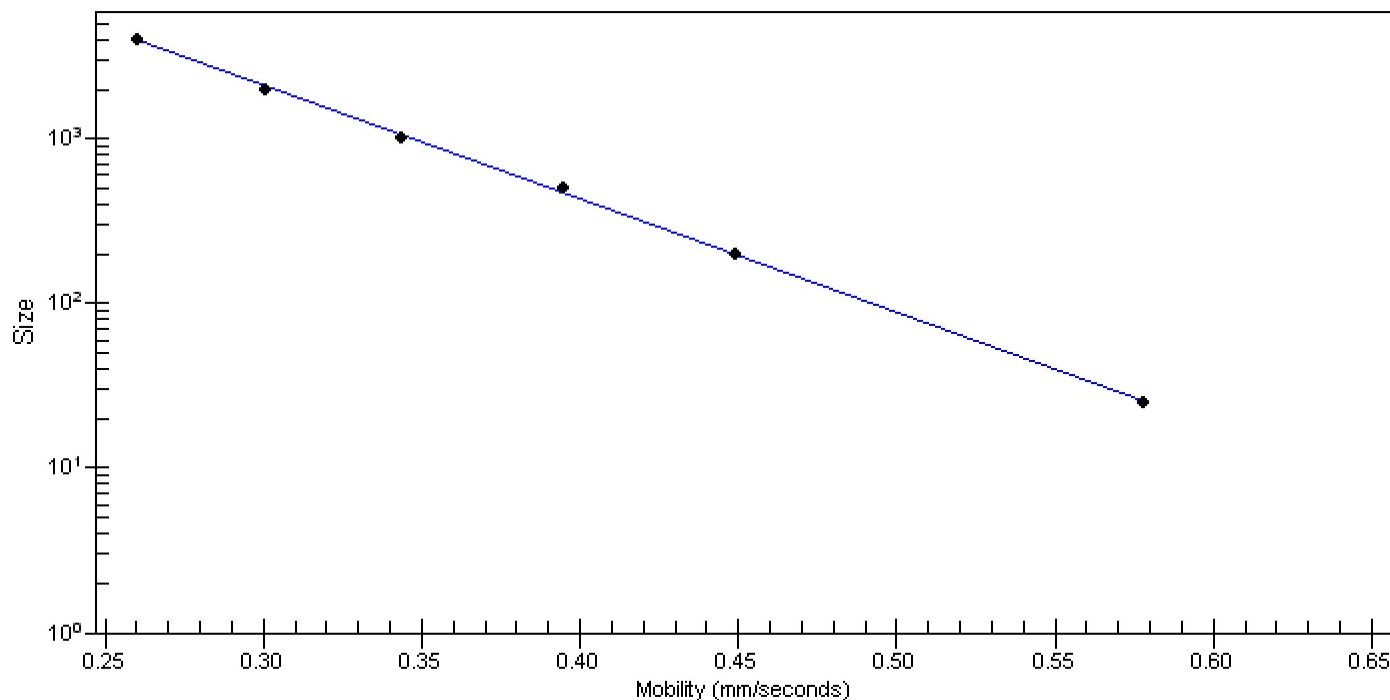


Assay Class: Plant RNA Nano
Data Path: C:\...ents and Settings\Bioanalyzer\2012-02-27\2012-02-27_001.xad

Created: 2/27/2012 9:41:20 AM
Modified: 2/27/2012 10:05:14 AM

Curves

Standard Curve



Assay Class: Plant RNA Nano
 Data Path: C:\...ents and Settings\Bioanalyzer\2012-02-27\2012-02-27_001.xad

Created: 2/27/2012 9:41:20 AM
 Modified: 2/27/2012 10:05:14 AM

Run Logbook

Description	Number	Source	Category	Sub Category	Time	Time Zone	User	Host
Run ended on port 1 (Number of wells acquired: 13)		Instrument	Run		2/27/2012 10:05:10 AM	(GMT --08:00) Pacific Standard Time	UC Davis	D8XSMGH1
Run started on port 1 (File: C:\Documents and Settings\Bioanalyzer\2012-02-27\2012-02-27_001.xad)		Instrument	Run		2/27/2012 9:41:25 AM	(GMT --08:00) Pacific Standard Time	UC Davis	D8XSMGH1
Product Number : G2938B		Instrument	Run		2/27/2012 9:41:25 AM	(GMT --08:00) Pacific Standard Time	UC Davis	D8XSMGH1
Name :		Instrument	Run		2/27/2012 9:41:25 AM	(GMT --08:00) Pacific Standard Time	UC Davis	D8XSMGH1
Vendor : Agilent Technologies		Instrument	Run		2/27/2012 9:41:25 AM	(GMT --08:00) Pacific Standard Time	UC Davis	D8XSMGH1
Serial# : DE13701086		Instrument	Run		2/27/2012 9:41:25 AM	(GMT --08:00) Pacific Standard Time	UC Davis	D8XSMGH1
Firmware : C.01.069		Instrument	Run		2/27/2012 9:41:25 AM	(GMT --08:00) Pacific Standard Time	UC Davis	D8XSMGH1
Cartridge : Electrode		Instrument	Run		2/27/2012 9:41:25 AM	(GMT --08:00) Pacific Standard Time	UC Davis	D8XSMGH1