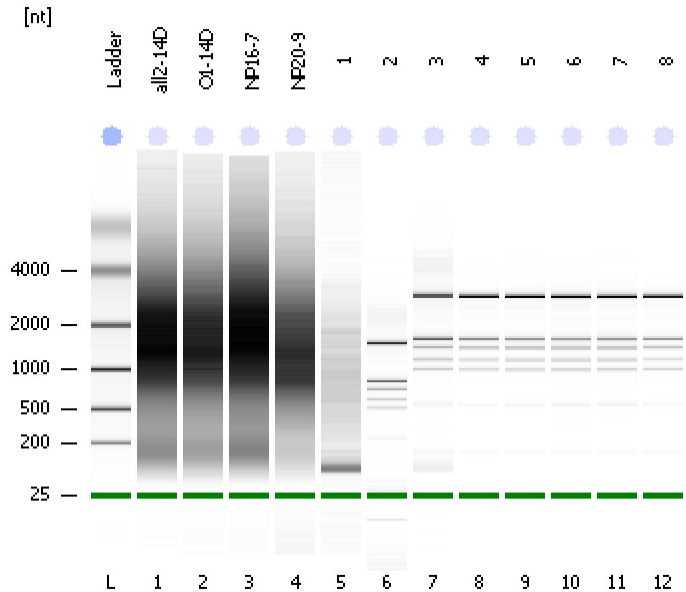


Assay Class: Eukaryote Total RNA Nano
Data Path: C:\...ents and Settings\Bioanalyzer\2012-02-27\2012-02-27_002.xad

Created: 2/27/2012 2:19:03 PM
Modified: 2/27/2012 3:09:22 PM

Electrophoresis File Run Summary



Instrument Information:

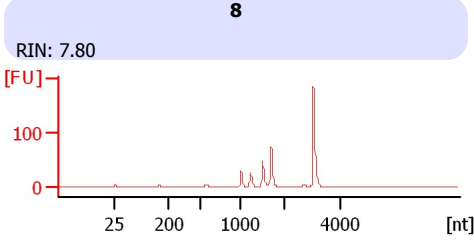
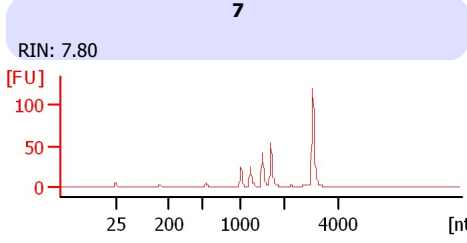
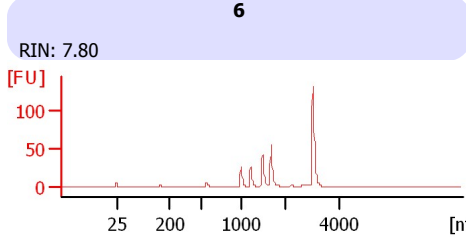
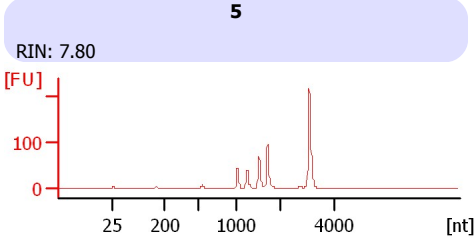
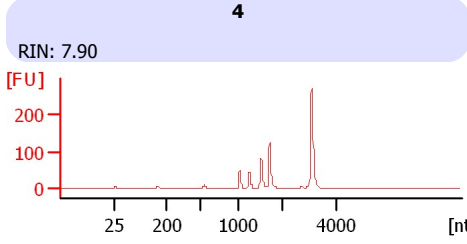
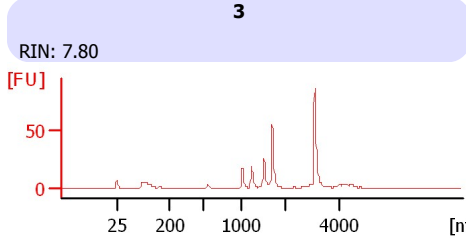
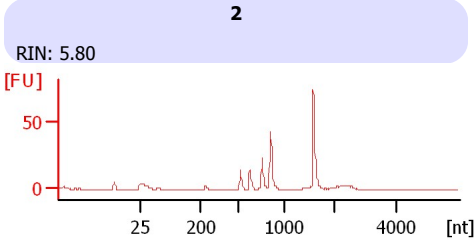
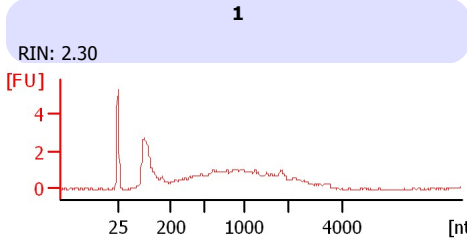
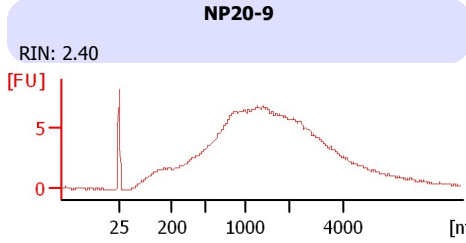
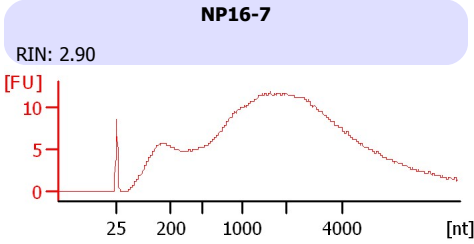
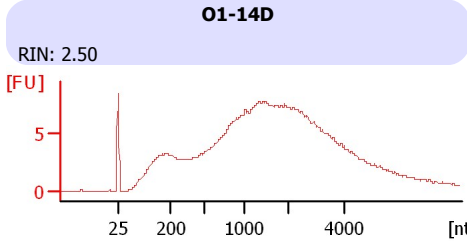
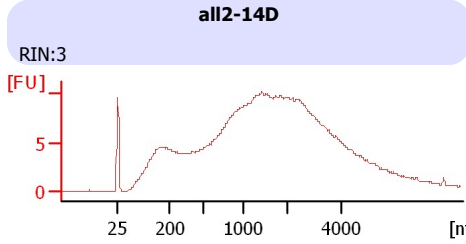
Instrument Name: DE13701086 Firmware: C.01.069
Serial#: DE13701086 Type: G2938B

Assay Information:

Assay Origin Path: C:\Program Files\Agilent\2100 bioanalyzer\2100 expert\assays\RNA\Eukaryote Total RNA Nano Series II.xsy
Assay Class: Eukaryote Total RNA Nano
Version: 2.6
Assay Comments: Total RNA Analysis ng sensitivity (Eukaryote)
© Copyright 2003 - 2009 Agilent Technologies, Inc.

Chip Information:

Chip Lot #:
Reagent Kit Lot #:
Chip Comments:



Assay Class: Eukaryote Total RNA Nano
 Data Path: C:\...ents and Settings\Bioanalyzer\2012-02-27\2012-02-27_002.xad

Created: 2/27/2012 2:19:03 PM
 Modified: 2/27/2012 3:09:22 PM

Electrophoresis File Run Summary (Chip Summary)

Sample Name	Sample Comment	Status	Result Label	Result Color
all2-14D		✓	RIN:3	
O1-14D		✓	RIN: 2.50	
NP16-7		✓	RIN: 2.90	
NP20-9		✓	RIN: 2.40	
1		✓	RIN: 2.30	
2		✓	RIN: 5.80	
3		✓	RIN: 7.80	
4		✓	RIN: 7.90	
5		✓	RIN: 7.80	
6		✓	RIN: 7.80	
7		✓	RIN: 7.80	
8		✓	RIN: 7.80	
Ladder		✓	All Other Samples	

Chip Lot #

Reagent Kit Lot #

Chip Comments :

Assay Class: Eukaryote Total RNA Nano
Data Path: C:\...ents and Settings\Bioanalyzer\2012-02-27\2012-02-27_002.xad

Created: 2/27/2012 2:19:03 PM
Modified: 2/27/2012 3:09:22 PM

Electrophoresis Assay Details

General Analysis Settings

Number of Available Sample and Ladder Wells (Max.) : 13
Minimum Visible Range [s] : 17
Maximum Visible Range [s] : 70
Start Analysis Time Range [s] : 19
End Analysis Time Range [s] : 69
Ladder Concentration [ng/μl] : 150
Lower Marker Concentration [ng/μl] : 0
Upper Marker Concentration [ng/μl] : 0
Used Lower Marker for Quantitation
Standard Curve Fit is Logarithmic
Show Data Aligned to Lower Marker

Integrator Settings

Integration Start Time [s] : 19
Integration End Time [s] : 69
Slope Threshold : 0.6
Height Threshold [FU] : 0.5
Area Threshold : 0.2
Width Threshold [s] : 0.5
Baseline Plateau [s] : 6

Filter Settings

Filter Width [s] : 0.5
Polynomial Order : 4

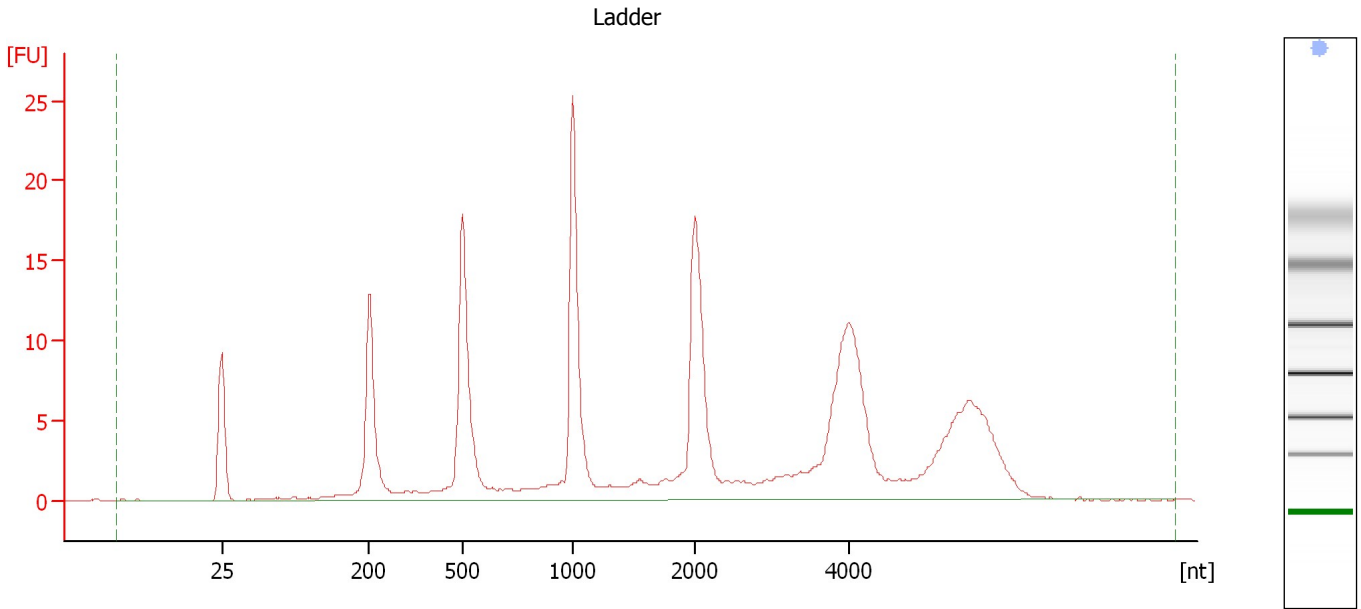
Ladder

Ladder Peak	Size
1	25
2	200
3	500
4	1000
5	2000
6	4000

Assay Class: Eukaryote Total RNA Nano
Data Path: C:\...ents and Settings\Bioanalyzer\2012-02-27\2012-02-27_002.xad

Created: 2/27/2012 2:19:03 PM
Modified: 2/27/2012 3:09:22 PM

Electropherogram Summary



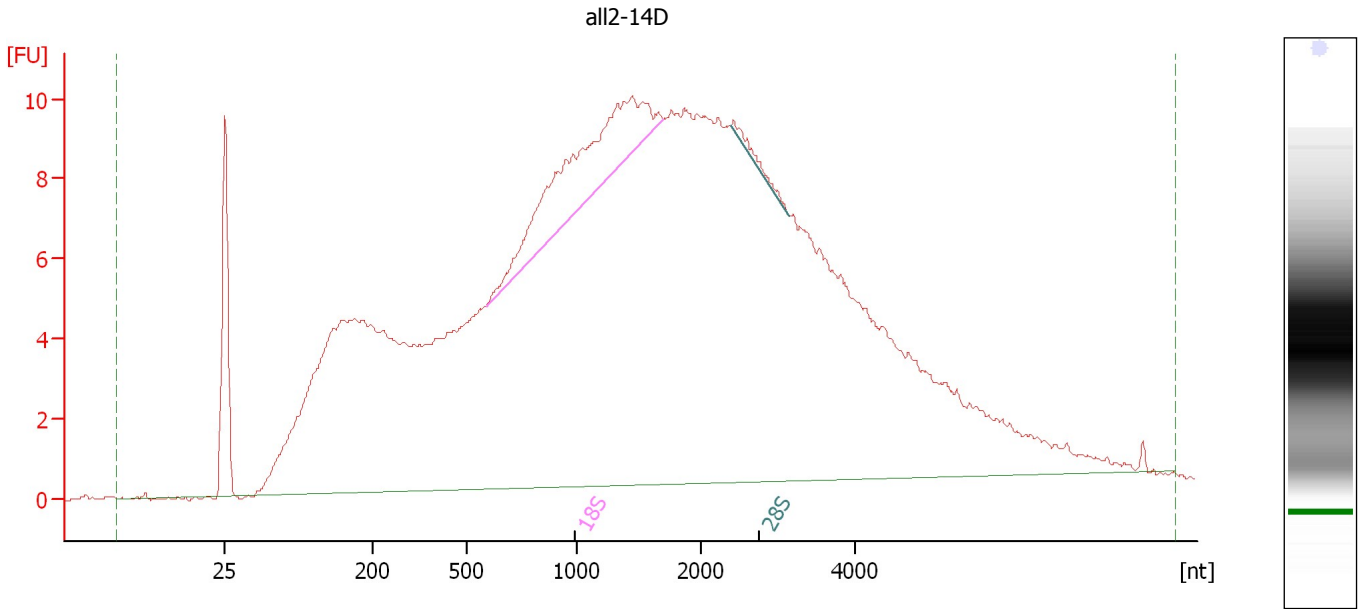
Overall Results for Ladder

RNA Area:	210.7	Result Flagging Color:	
RNA Concentration:	150 ng/μl	Result Flagging Label:	All Other Samples

Assay Class: Eukaryote Total RNA Nano
Data Path: C:\...ents and Settings\Bioanalyzer\2012-02-27\2012-02-27_002.xad

Created: 2/27/2012 2:19:03 PM
Modified: 2/27/2012 3:09:22 PM

Electropherogram Summary Continued ...



Overall Results for sample 1 : all2-14D

RNA Area: 446.3 RNA Integrity Number (RIN): 3 (B.02.08)
RNA Concentration: 318 ng/μl Result Flagging Color:
rRNA Ratio [28s / 18s]: 0.0 Result Flagging Label: RIN:3

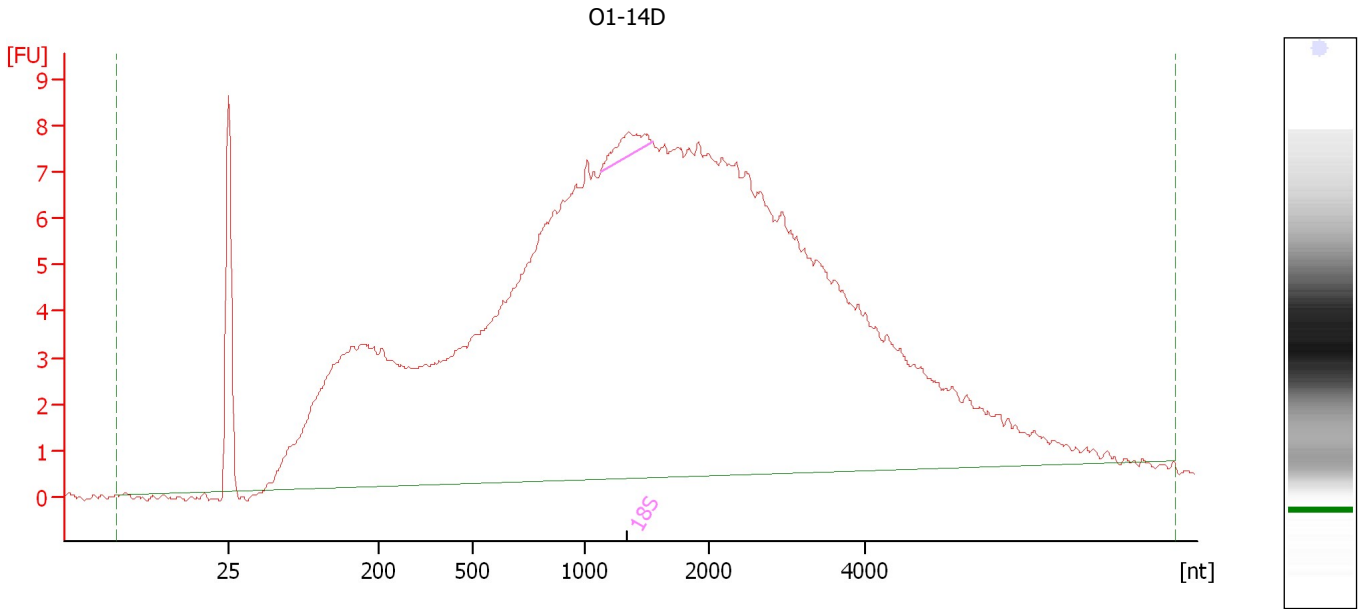
Fragment table for sample 1 : all2-14D

Name	Start Size [nt]	End Size [nt]	Area	% of total Area
18S	589	1,682	19.7	4.4
28S	2,390	3,121	0.8	0.2

Assay Class: Eukaryote Total RNA Nano
Data Path: C:\...ents and Settings\Bioanalyzer\2012-02-27\2012-02-27_002.xad

Created: 2/27/2012 2:19:03 PM
Modified: 2/27/2012 3:09:22 PM

Electropherogram Summary Continued ...



Overall Results for sample 2 : O1-14D

RNA Area:	330.3	RNA Integrity Number (RIN):	2.5 (B.02.08)
RNA Concentration:	235 ng/μl	Result Flagging Color:	
rRNA Ratio [28s / 18s]:	0.0	Result Flagging Label:	RIN: 2.50

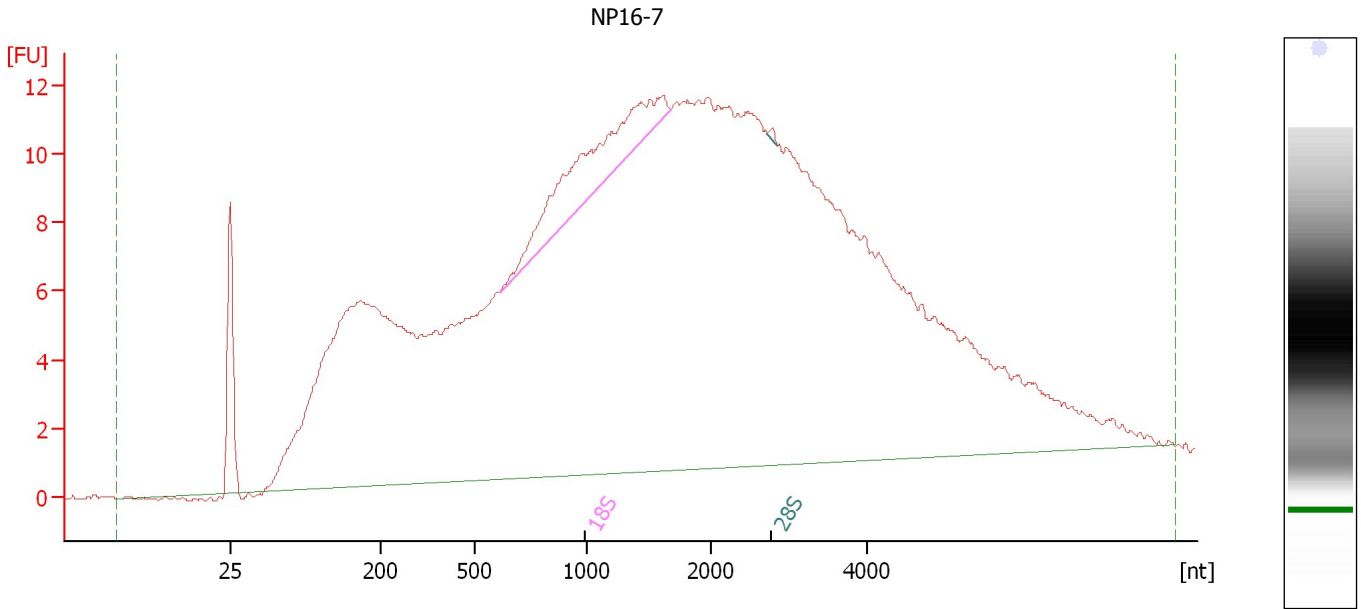
Fragment table for sample 2 : O1-14D

Name	Start Size [nt]	End Size [nt]	Area	% of total Area
18S	1,122	1,551	1.7	0.5

Assay Class: Eukaryote Total RNA Nano
 Data Path: C:\...ents and Settings\Bioanalyzer\2012-02-27\2012-02-27_002.xad

Created: 2/27/2012 2:19:03 PM
 Modified: 2/27/2012 3:09:22 PM

Electropherogram Summary Continued ...



Overall Results for sample 3 : NP16-7

RNA Area:	537.4	RNA Integrity Number (RIN):	2.9 (B.02.08, Anomaly Threshold(s) manually adapted)
RNA Concentration:	383 ng/μl	Result Flagging Color:	
rRNA Ratio [28s / 18s]:	0.0	Result Flagging Label:	RIN: 2.90

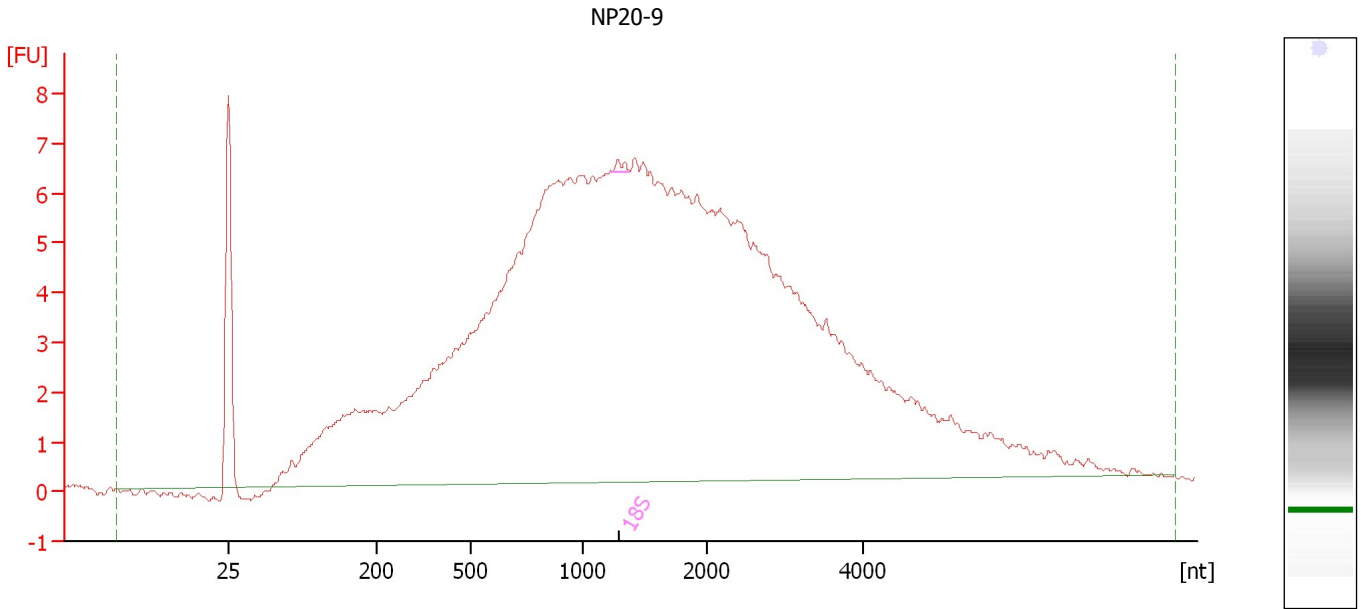
Fragment table for sample 3 : NP16-7

Name	Start Size [nt]	End Size [nt]	Area	% of total Area
18S	616	1,681	17.9	3.3
28S	2,720	2,843	0.2	0.0

Assay Class: Eukaryote Total RNA Nano
Data Path: C:\...ents and Settings\Bioanalyzer\2012-02-27\2012-02-27_002.xad

Created: 2/27/2012 2:19:03 PM
Modified: 2/27/2012 3:09:22 PM

Electropherogram Summary Continued ...



Overall Results for sample 4 : NP20-9

RNA Area:	264.9	RNA Integrity Number (RIN):	2.4 (B.02.08)
RNA Concentration:	189 ng/μl	Result Flagging Color:	
rRNA Ratio [28s / 18s]:	0.0	Result Flagging Label:	RIN: 2.40

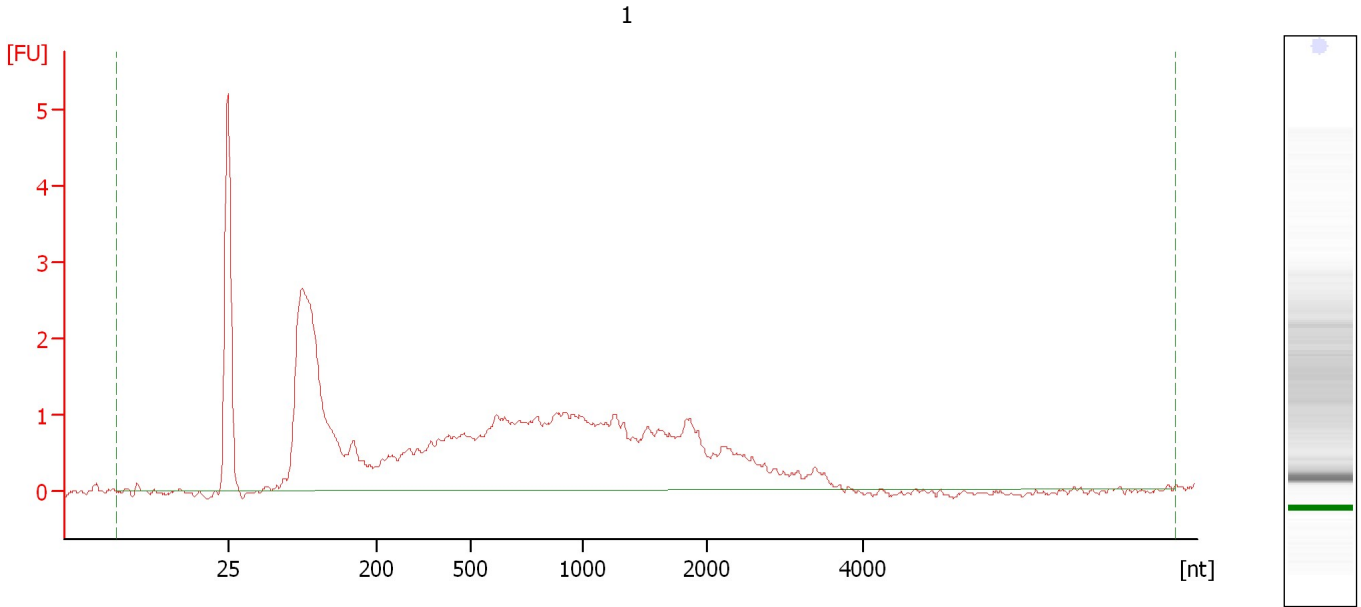
Fragment table for sample 4 : NP20-9

Name	Start Size [nt]	End Size [nt]	Area	% of total Area
18S	1,231	1,377	0.2	0.1

Assay Class: Eukaryote Total RNA Nano
Data Path: C:\...ents and Settings\Bioanalyzer\2012-02-27\2012-02-27_002.xad

Created: 2/27/2012 2:19:03 PM
Modified: 2/27/2012 3:09:22 PM

Electropherogram Summary Continued ...



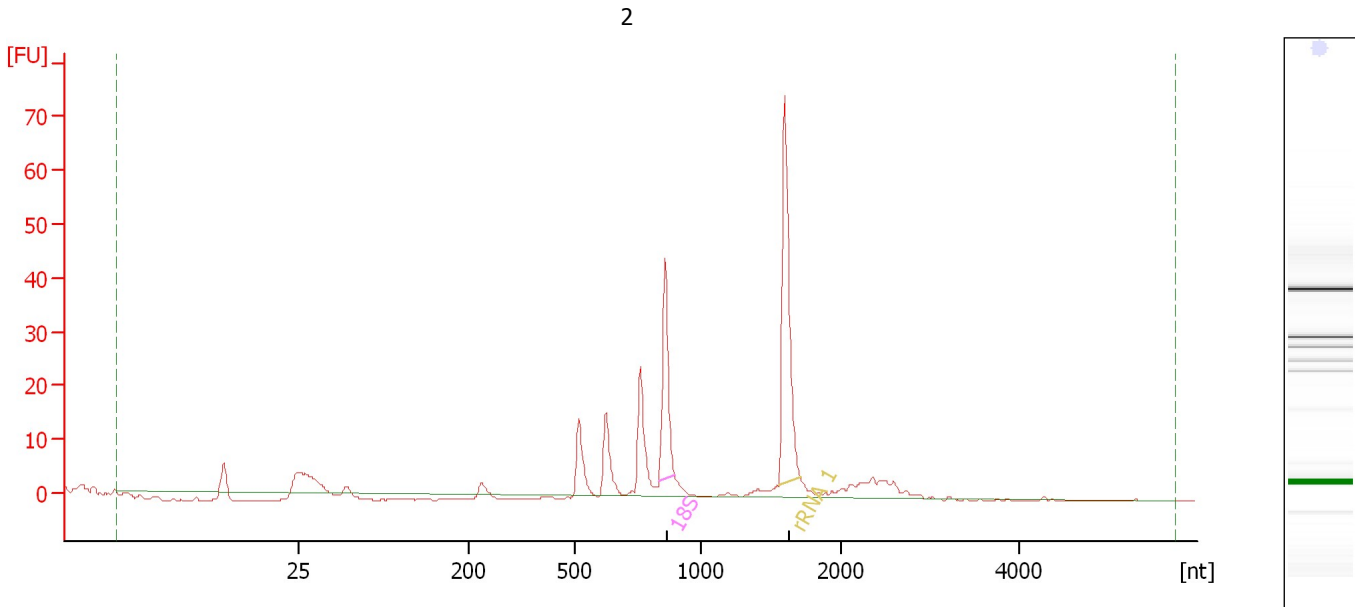
Overall Results for sample 5 : 1

RNA Area:	50.0	RNA Integrity Number (RIN):	2.3 (B.02.08)
RNA Concentration:	36 ng/μl	Result Flagging Color:	
rRNA Ratio [28s / 18s]:	0.0	Result Flagging Label:	RIN: 2.30

Assay Class: Eukaryote Total RNA Nano
 Data Path: C:\...ents and Settings\Bioanalyzer\2012-02-27\2012-02-27_002.xad

Created: 2/27/2012 2:19:03 PM
 Modified: 2/27/2012 3:09:22 PM

Electropherogram Summary Continued ...



Overall Results for sample 6 : 2

RNA Area:	167.7	RNA Integrity Number (RIN):	5.8 (B.02.08, Anomaly Threshold(s) manually adapted)
RNA Concentration:	119 ng/μl	Result Flagging Color:	
rRNA Ratio [28s / 18s]:	0.0	Result Flagging Label:	RIN: 5.80

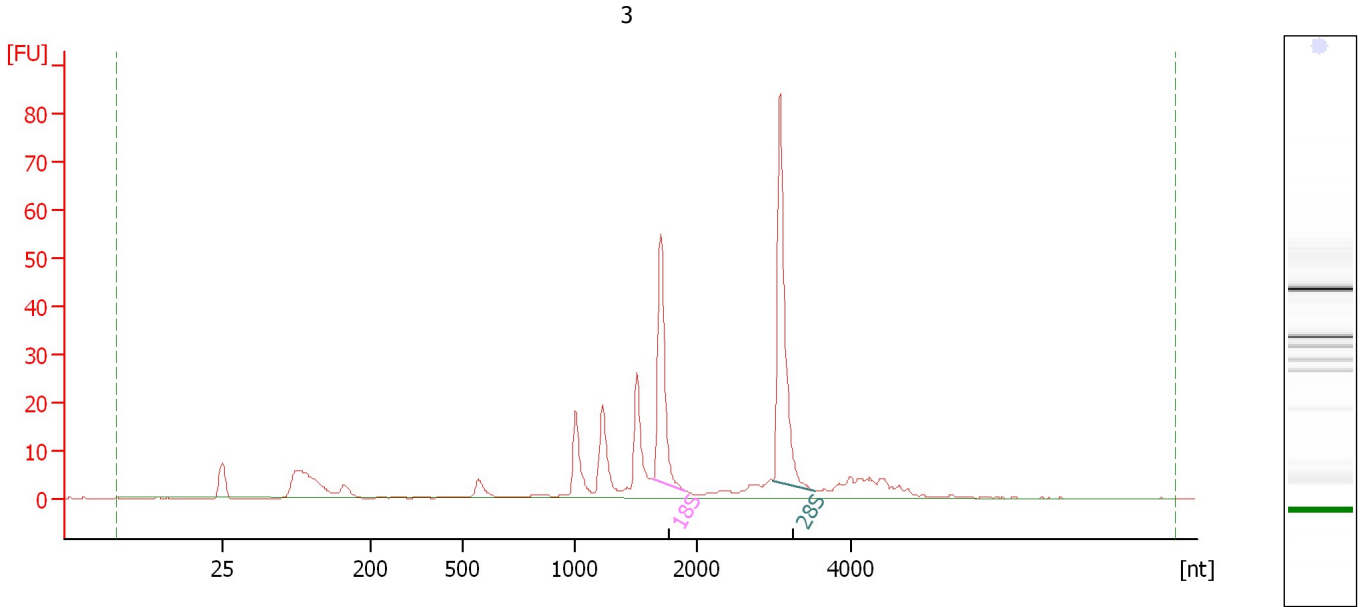
Fragment table for sample 6 : 2

Name	Start Size [nt]	End Size [nt]	Area	% of total Area
18S	835	897	26.9	16.0
rRNA 1	1,553	1,705	51.0	30.4

Assay Class: Eukaryote Total RNA Nano
Data Path: C:\...ents and Settings\Bioanalyzer\2012-02-27\2012-02-27_002.xad

Created: 2/27/2012 2:19:03 PM
Modified: 2/27/2012 3:09:22 PM

Electropherogram Summary Continued ...



Overall Results for sample 7 : 3

RNA Area:	268.1	RNA Integrity Number (RIN):	7.8 (B.02.08, Anomaly Threshold(s) manually adapted)
RNA Concentration:	191 ng/μl	Result Flagging Color:	
rRNA Ratio [28s / 18s]:	1.6	Result Flagging Label:	RIN: 7.80

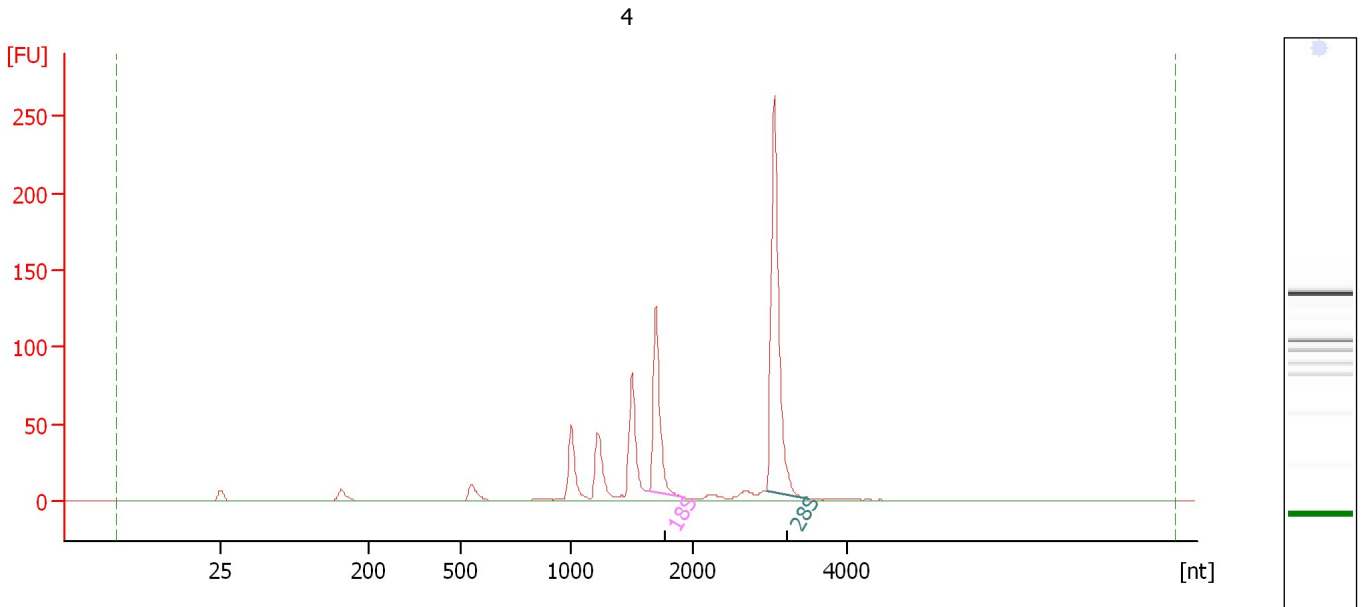
Fragment table for sample 7 : 3

Name	Start Size [nt]	End Size [nt]	Area	% of total Area
18S	1,645	1,896	39.9	14.9
28S	2,985	3,525	65.7	24.5

Assay Class: Eukaryote Total RNA Nano
Data Path: C:\...ents and Settings\Bioanalyzer\2012-02-27\2012-02-27_002.xad

Created: 2/27/2012 2:19:03 PM
Modified: 2/27/2012 3:09:22 PM

Electropherogram Summary Continued ...



Overall Results for sample 8 : 4

RNA Area: 580.9 RNA Integrity Number (RIN): 7.9 (B.02.08, Anomaly Threshold(s) manually adapted)
RNA Concentration: 414 ng/μl
rRNA Ratio [28s / 18s]: 2.2
Result Flagging Color:
Result Flagging Label: RIN: 7.90

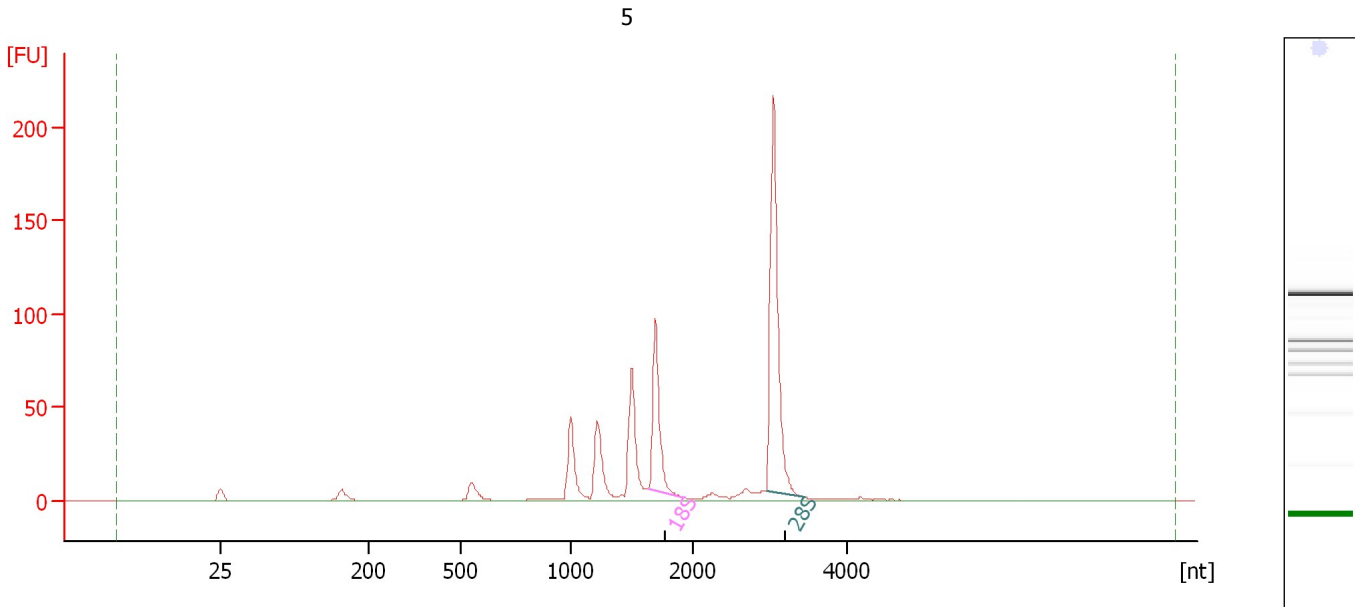
Fragment table for sample 8 : 4

Name	Start Size [nt]	End Size [nt]	Area	% of total Area
18S	1,641	1,920	95.8	16.5
28S	2,959	3,501	207.3	35.7

Assay Class: Eukaryote Total RNA Nano
 Data Path: C:\...ents and Settings\Bioanalyzer\2012-02-27\2012-02-27_002.xad

Created: 2/27/2012 2:19:03 PM
 Modified: 2/27/2012 3:09:22 PM

Electropherogram Summary Continued ...



Overall Results for sample 9 : 5

RNA Area:	494.7	RNA Integrity Number (RIN):	7.8 (B.02.08, Anomaly Threshold(s) manually adapted)
RNA Concentration:	352 ng/μl	Result Flagging Color:	
rRNA Ratio [28s / 18s]:	2.3	Result Flagging Label:	RIN: 7.80

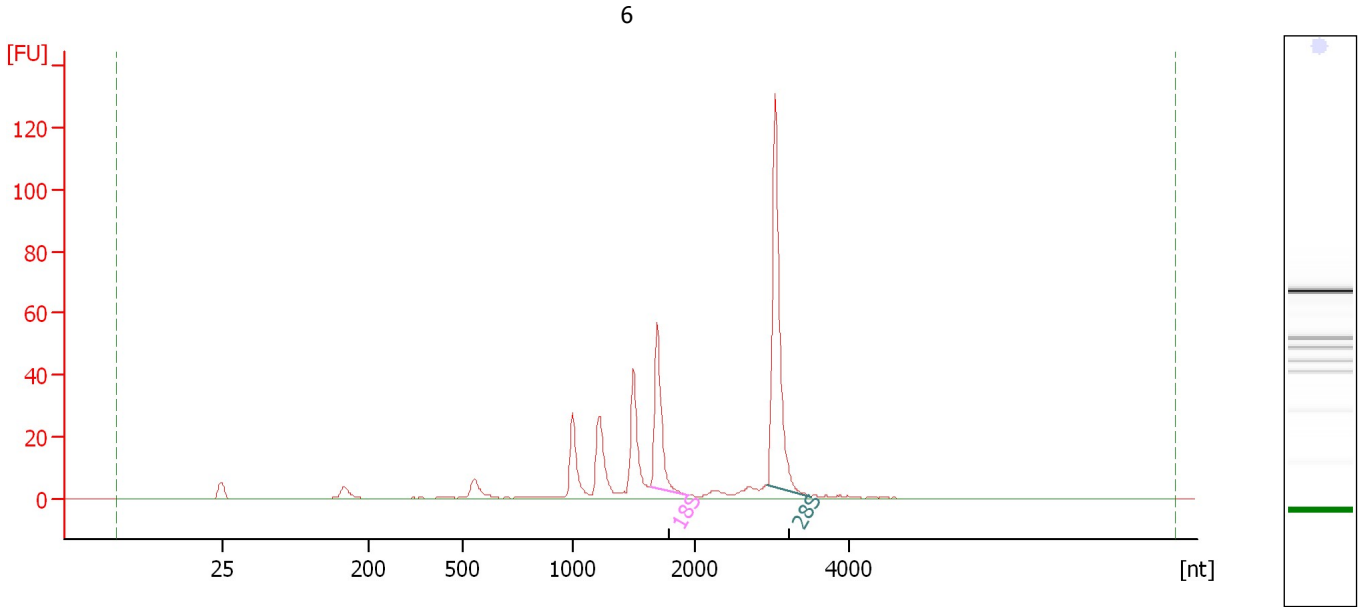
Fragment table for sample 9 : 5

Name	Start Size [nt]	End Size [nt]	Area	% of total Area
18S	1,633	1,894	73.0	14.8
28S	2,959	3,460	167.6	33.9

Assay Class: Eukaryote Total RNA Nano
 Data Path: C:\...ents and Settings\Bioanalyzer\2012-02-27\2012-02-27_002.xad

Created: 2/27/2012 2:19:03 PM
 Modified: 2/27/2012 3:09:22 PM

Electropherogram Summary Continued ...



Overall Results for sample 10 : 6

RNA Area:	309.5	RNA Integrity Number (RIN):	7.8 (B.02.08, Anomaly Threshold(s) manually adapted)
RNA Concentration:	220 ng/μl	Result Flagging Color:	
rRNA Ratio [28s / 18s]:	2.3	Result Flagging Label:	RIN: 7.80

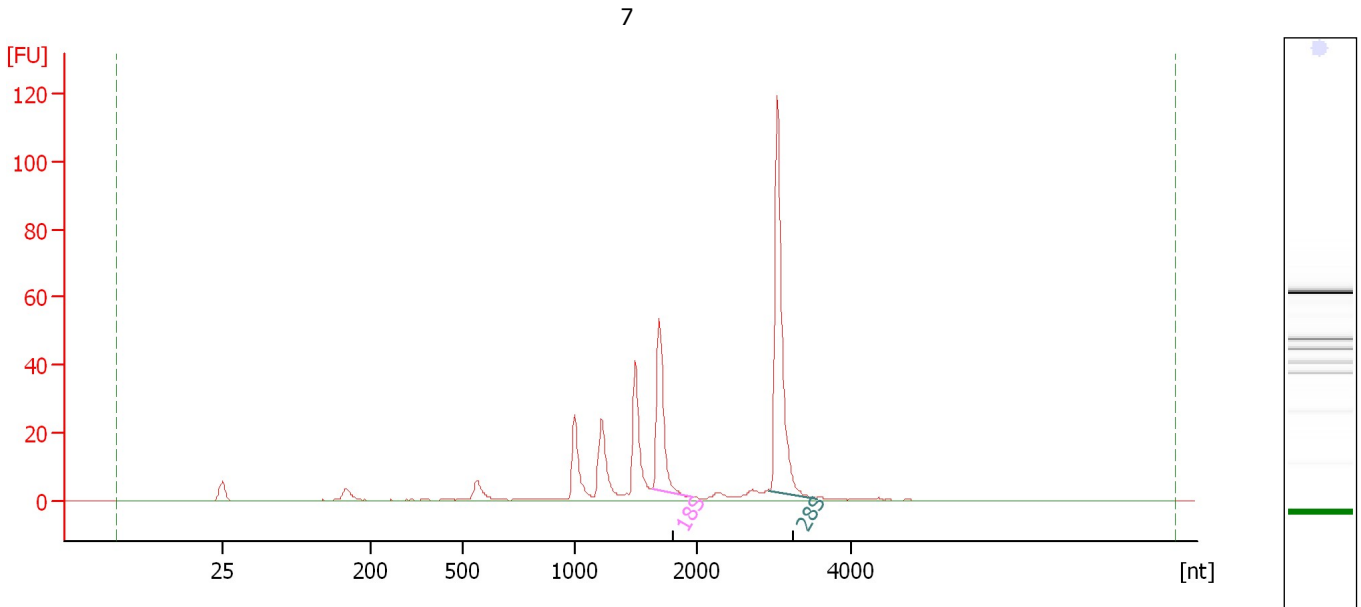
Fragment table for sample 10 : 6

Name	Start Size [nt]	End Size [nt]	Area	% of total Area
18S	1,634	1,939	42.1	13.6
28S	2,944	3,500	98.9	31.9

Assay Class: Eukaryote Total RNA Nano
 Data Path: C:\...ents and Settings\Bioanalyzer\2012-02-27\2012-02-27_002.xad

Created: 2/27/2012 2:19:03 PM
 Modified: 2/27/2012 3:09:22 PM

Electropherogram Summary Continued ...



Overall Results for sample 11 : 7

RNA Area:	291.0	RNA Integrity Number (RIN):	7.8 (B.02.08, Anomaly Threshold(s) manually adapted)
RNA Concentration:	207 ng/μl	Result Flagging Color:	
rRNA Ratio [28s / 18s]:	2.2	Result Flagging Label:	RIN: 7.80

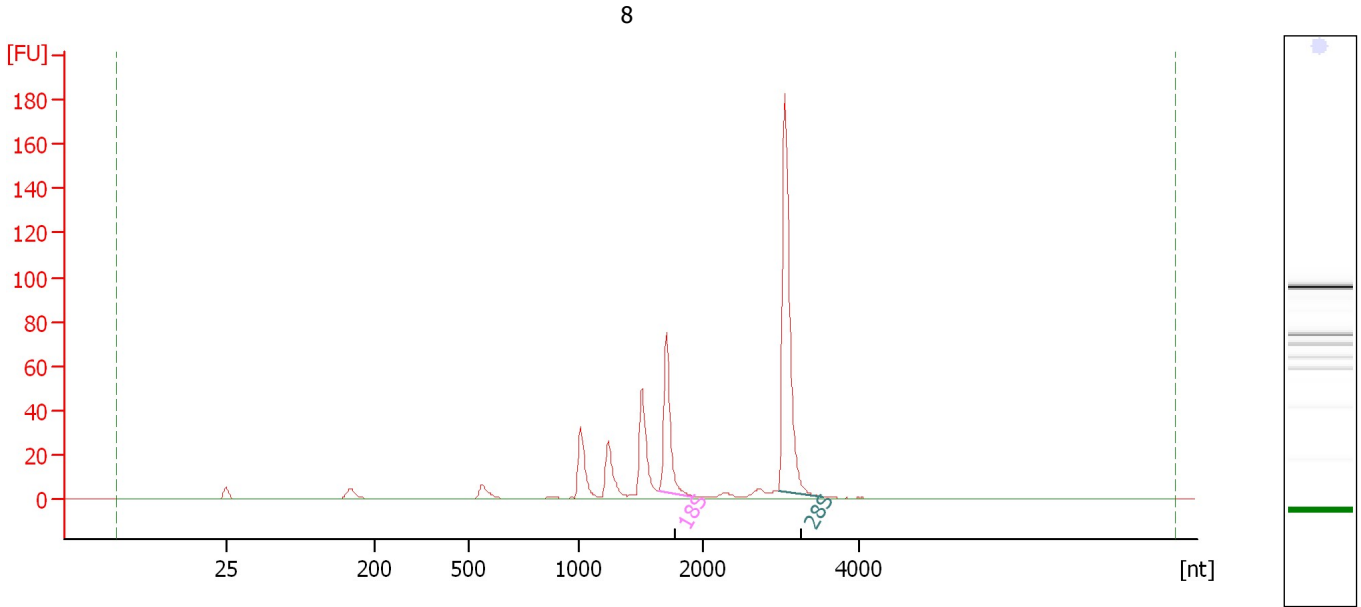
Fragment table for sample 11 : 7

Name	Start Size [nt]	End Size [nt]	Area	% of total Area
18S	1,636	1,966	41.1	14.1
28S	2,943	3,553	91.4	31.4

Assay Class: Eukaryote Total RNA Nano
Data Path: C:\...ents and Settings\Bioanalyzer\2012-02-27\2012-02-27_002.xad

Created: 2/27/2012 2:19:03 PM
Modified: 2/27/2012 3:09:22 PM

Electropherogram Summary Continued ...



Overall Results for sample 12 : 8

RNA Area:	355.8	RNA Integrity Number (RIN):	7.8 (B.02.08, Anomaly Threshold(s) manually adapted)
RNA Concentration:	253 ng/μl	Result Flagging Color:	
rRNA Ratio [28s / 18s]:	2.4	Result Flagging Label:	RIN: 7.80

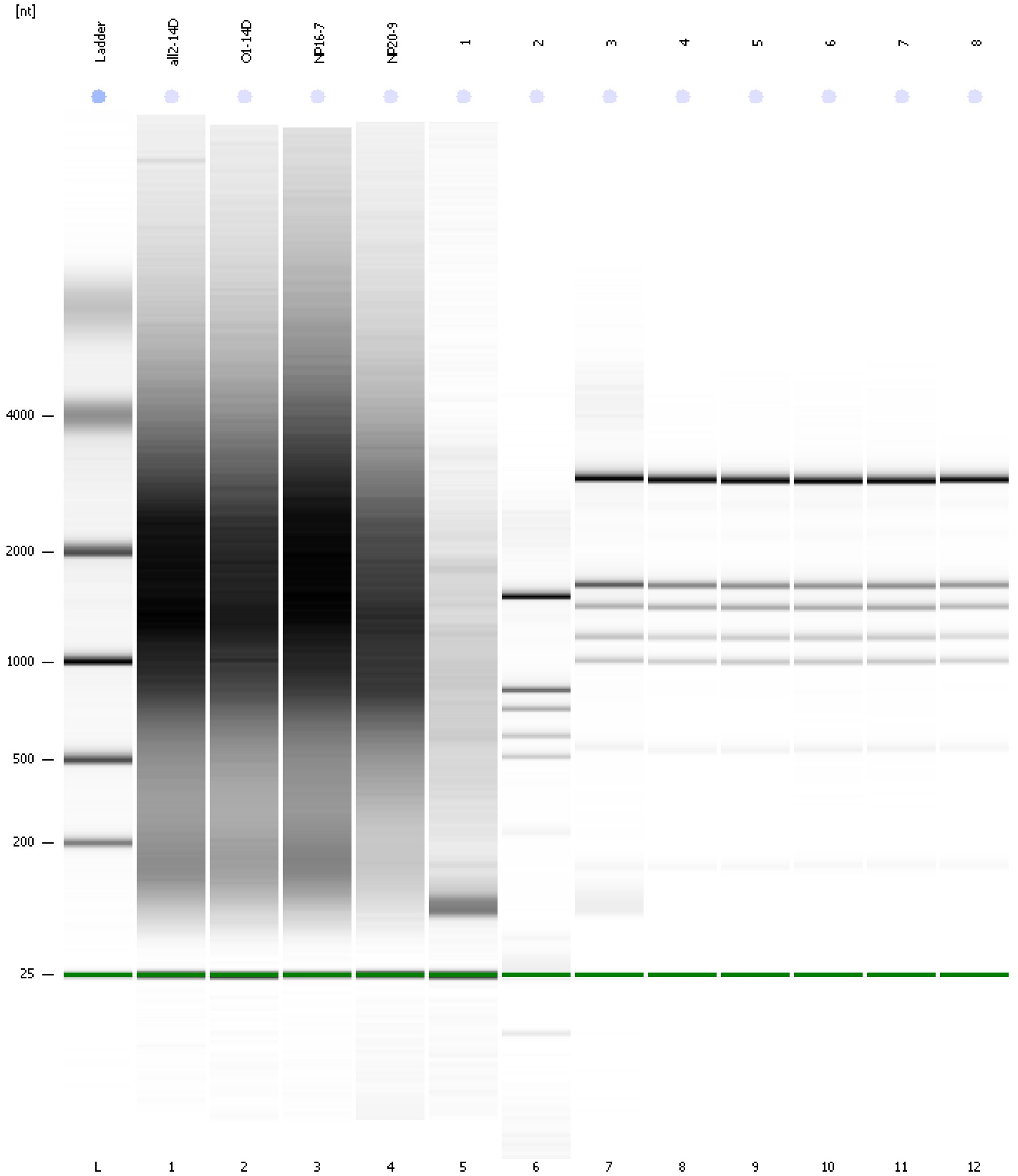
Fragment table for sample 12 : 8

Name	Start Size [nt]	End Size [nt]	Area	% of total Area
18S	1,640	1,916	56.2	15.8
28S	2,969	3,534	135.2	38.0

Assay Class: Eukaryote Total RNA Nano
Data Path: C:\...ents and Settings\Bioanalyzer\2012-02-27\2012-02-27_002.xad

Created: 2/27/2012 2:19:03 PM
Modified: 2/27/2012 3:09:22 PM

Gel Image

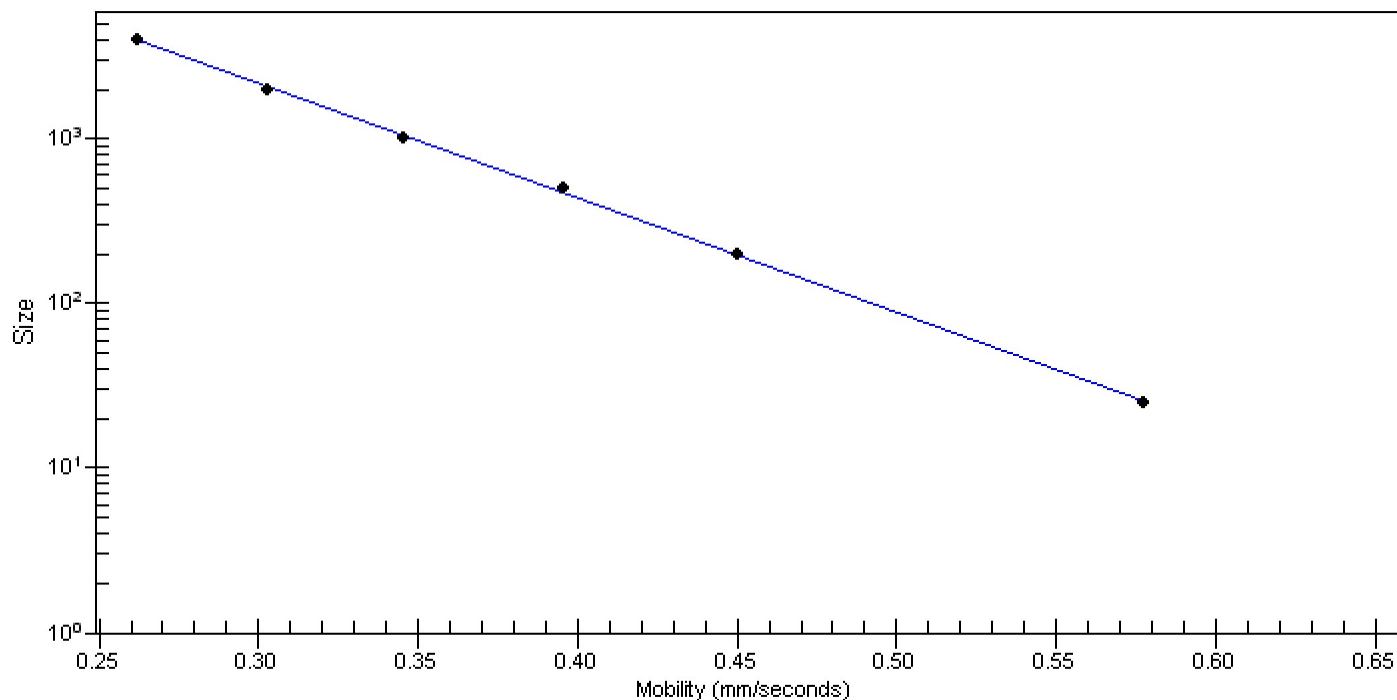


Assay Class: Eukaryote Total RNA Nano
Data Path: C:\...ents and Settings\Bioanalyzer\2012-02-27\2012-02-27_002.xad

Created: 2/27/2012 2:19:03 PM
Modified: 2/27/2012 3:09:22 PM

Curves

Standard Curve



Assay Class: Eukaryote Total RNA Nano
 Data Path: C:\...ents and Settings\Bioanalyzer\2012-02-27\2012-02-27_002.xad

Created: 2/27/2012 2:19:03 PM
 Modified: 2/27/2012 3:09:22 PM

Run Logbook

Description	Number	Source	Category	Sub Category	Time	Time Zone	User	Host
Run ended on port 1 (Number of wells acquired: 13)		Instrument	Run		2/27/2012 2:42:53 PM	(GMT --08:00) Pacific Standard Time	UC Davis	D8XSMGH1
Run started on port 1 (File: C:\Documents and Settings\Bioanalyzer\2012-02-27\2012-02-27_002.xad)		Instrument	Run		2/27/2012 2:19:09 PM	(GMT --08:00) Pacific Standard Time	UC Davis	D8XSMGH1
Product Number : G2938B		Instrument	Run		2/27/2012 2:19:09 PM	(GMT --08:00) Pacific Standard Time	UC Davis	D8XSMGH1
Name :		Instrument	Run		2/27/2012 2:19:09 PM	(GMT --08:00) Pacific Standard Time	UC Davis	D8XSMGH1
Vendor : Agilent Technologies		Instrument	Run		2/27/2012 2:19:09 PM	(GMT --08:00) Pacific Standard Time	UC Davis	D8XSMGH1
Serial# : DE13701086		Instrument	Run		2/27/2012 2:19:09 PM	(GMT --08:00) Pacific Standard Time	UC Davis	D8XSMGH1
Firmware : C.01.069		Instrument	Run		2/27/2012 2:19:09 PM	(GMT --08:00) Pacific Standard Time	UC Davis	D8XSMGH1
Cartridge : Electrode		Instrument	Run		2/27/2012 2:19:09 PM	(GMT --08:00) Pacific Standard Time	UC Davis	D8XSMGH1