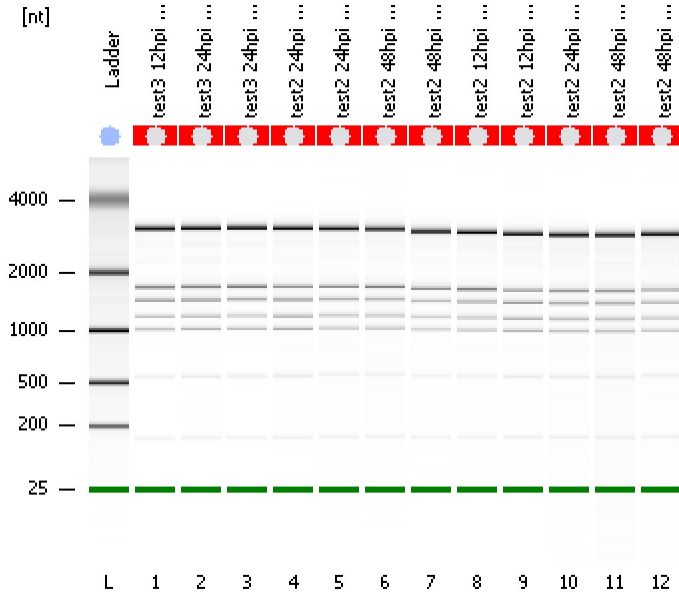


Assay Class: Eukaryote Total RNA Nano
Data Path: C:\...ents and Settings\Bioanalyzer\2012-02-27\2012-02-27_003.xad

Created: 2/27/2012 3:40:34 PM
Modified: 2/27/2012 4:22:30 PM

Electrophoresis File Run Summary



Instrument Information:

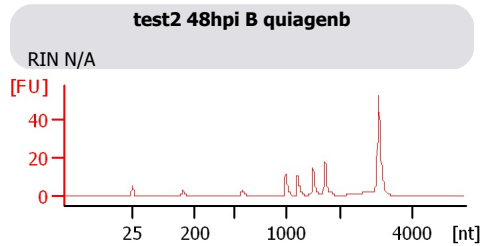
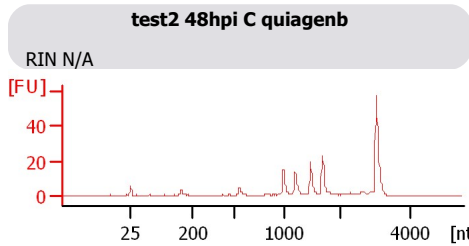
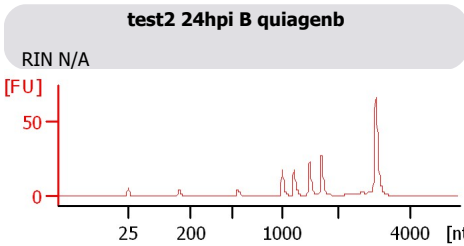
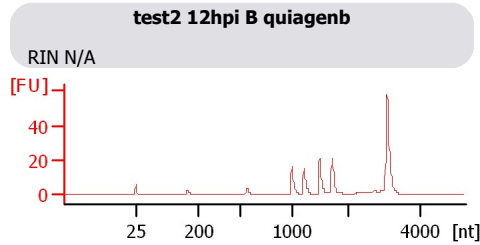
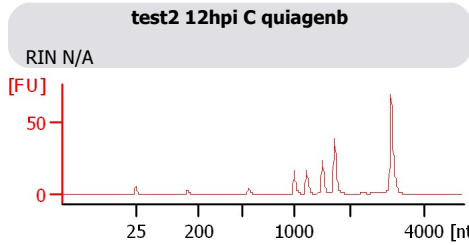
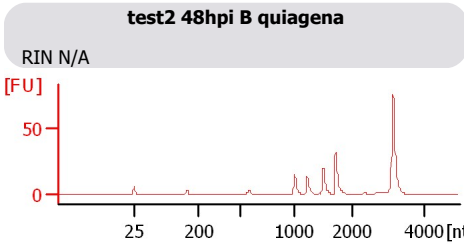
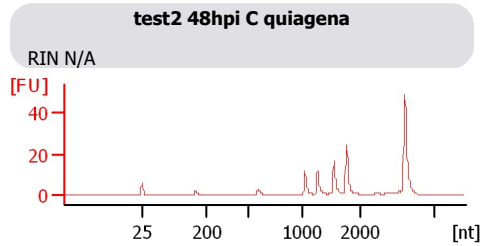
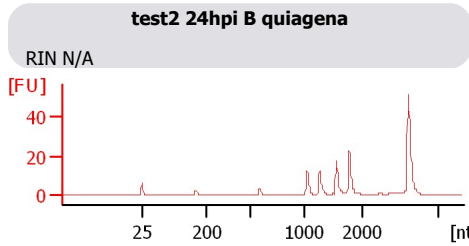
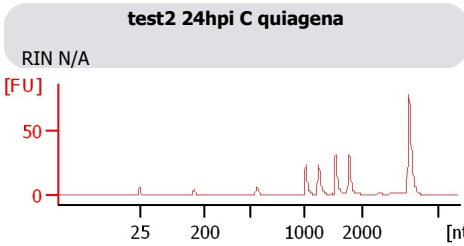
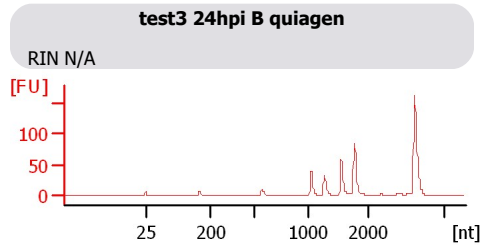
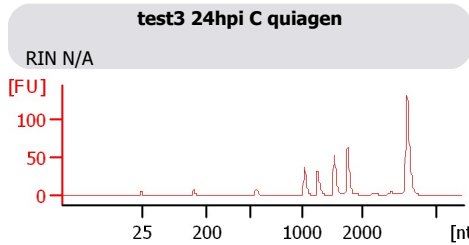
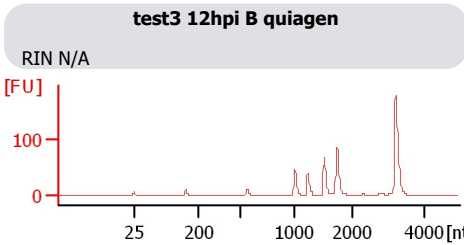
Instrument Name: DE13701086 Firmware: C.01.069
Serial#: DE13701086 Type: G2938B

Assay Information:

Assay Origin Path: C:\Program Files\Agilent\2100 bioanalyzer\2100 expert\assays\RNA\Eukaryote Total RNA Nano Series II.xsy
Assay Class: Eukaryote Total RNA Nano
Version: 2.6
Assay Comments: Total RNA Analysis ng sensitivity (Eukaryote)
© Copyright 2003 - 2009 Agilent Technologies, Inc.

Chip Information:

Chip Lot #:
Reagent Kit Lot #:
Chip Comments:



Assay Class: Eukaryote Total RNA Nano
Data Path: C:\...ents and Settings\Bioanalyzer\2012-02-27\2012-02-27_003.xad

Created: 2/27/2012 3:40:34 PM
Modified: 2/27/2012 4:22:30 PM

Electrophoresis File Run Summary (Chip Summary)

Sample Name	Sample Comment	Status	Result Label	Result Color
test3 12hpi B quiagen		✓	RIN N/A	
test3 24hpi C quiagen		✓	RIN N/A	
test3 24hpi B quiagen		✓	RIN N/A	
test2 24hpi C quiagena		✓	RIN N/A	
test2 24hpi B quiagena		✓	RIN N/A	
test2 48hpi C quiagena		✓	RIN N/A	
test2 48hpi B quiagena		✓	RIN N/A	
test2 12hpi C quiagenb		✓	RIN N/A	
test2 12hpi B quiagenb		✓	RIN N/A	
test2 24hpi B quiagenb		✓	RIN N/A	
test2 48hpi C quiagenb		✓	RIN N/A	
test2 48hpi B quiagenb		✓	RIN N/A	
Ladder		✓	All Other Samples	

Chip Lot #

Reagent Kit Lot #

Chip Comments :

Assay Class: Eukaryote Total RNA Nano
Data Path: C:\...ents and Settings\Bioanalyzer\2012-02-27\2012-02-27_003.xad

Created: 2/27/2012 3:40:34 PM
Modified: 2/27/2012 4:22:30 PM

Electrophoresis Assay Details

General Analysis Settings

Number of Available Sample and Ladder Wells (Max.) : 13
Minimum Visible Range [s] : 17
Maximum Visible Range [s] : 70
Start Analysis Time Range [s] : 19
End Analysis Time Range [s] : 69
Ladder Concentration [ng/ μ l] : 150
Lower Marker Concentration [ng/ μ l] : 0
Upper Marker Concentration [ng/ μ l] : 0
Used Lower Marker for Quantitation
Standard Curve Fit is Logarithmic
Show Data Aligned to Lower Marker

Integrator Settings

Integration Start Time [s] : 19
Integration End Time [s] : 69
Slope Threshold : 0.6
Height Threshold [FU] : 0.5
Area Threshold : 0.2
Width Threshold [s] : 0.5
Baseline Plateau [s] : 6

Filter Settings

Filter Width [s] : 0.5
Polynomial Order : 4

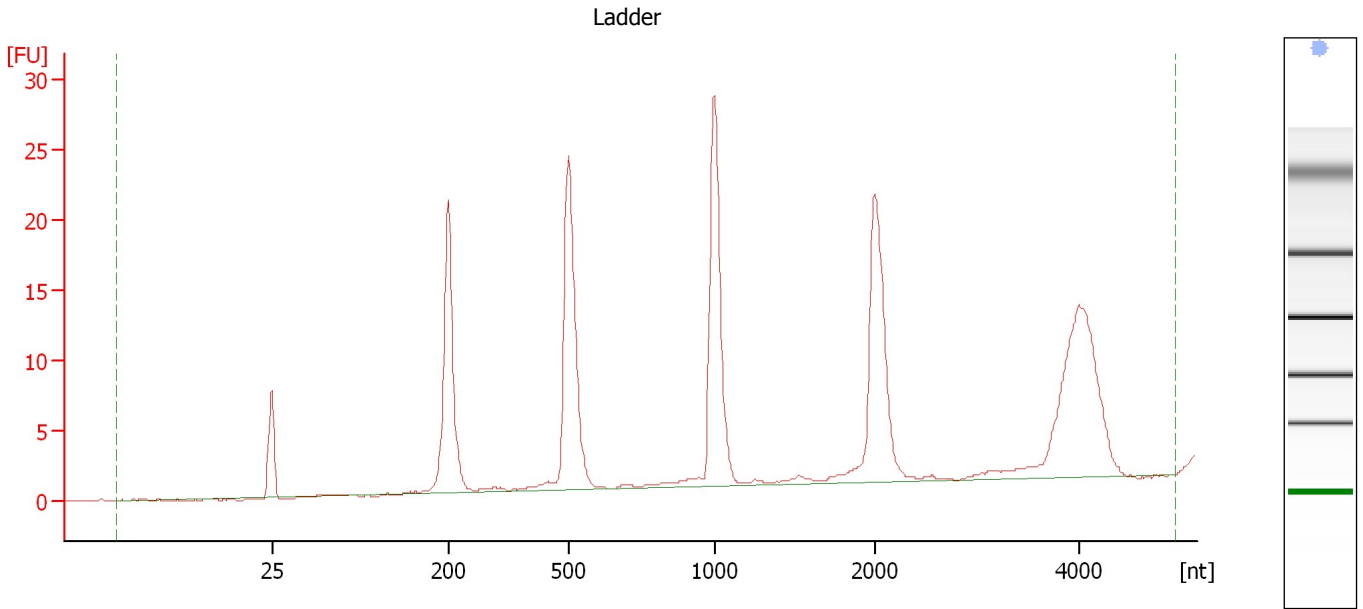
Ladder

Ladder Peak	Size
1	25
2	200
3	500
4	1000
5	2000
6	4000

Assay Class: Eukaryote Total RNA Nano
Data Path: C:\...ents and Settings\Bioanalyzer\2012-02-27\2012-02-27_003.xad

Created: 2/27/2012 3:40:34 PM
Modified: 2/27/2012 4:22:30 PM

Electropherogram Summary



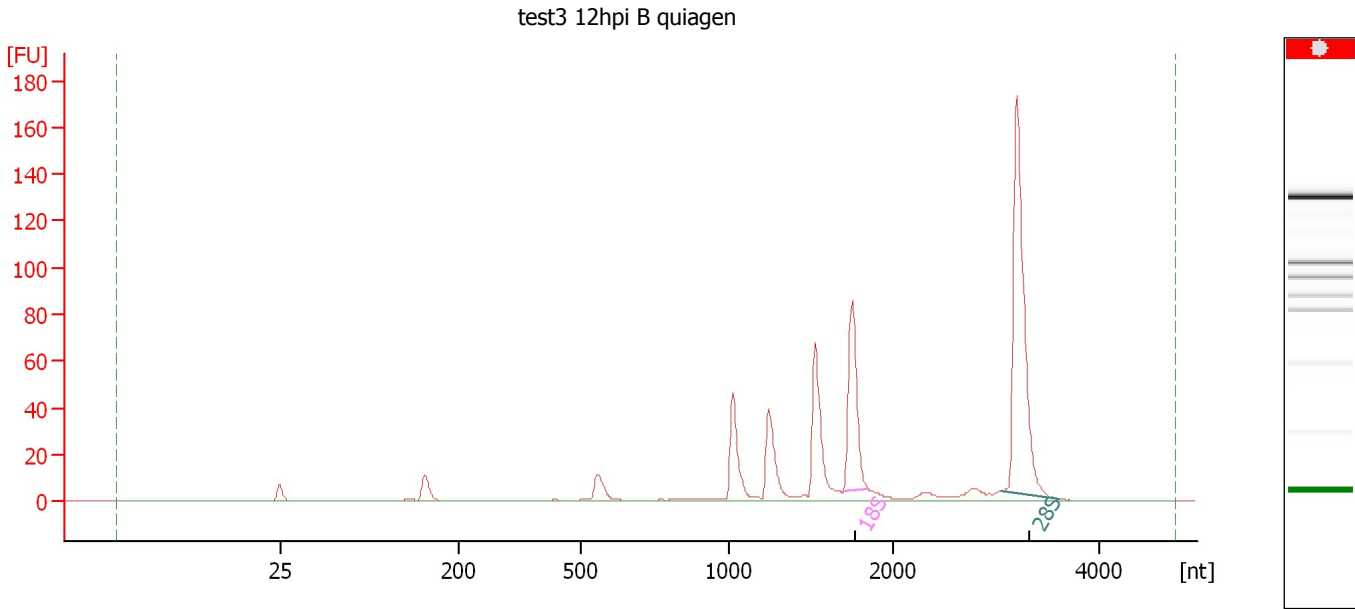
Overall Results for Ladder

RNA Area:	177.2	Result Flagging Color:	
RNA Concentration:	150 ng/ μ l	Result Flagging Label:	All Other Samples

Assay Class: Eukaryote Total RNA Nano
Data Path: C:\...ents and Settings\Bioanalyzer\2012-02-27\2012-02-27_003.xad

Created: 2/27/2012 3:40:34 PM
Modified: 2/27/2012 4:22:30 PM

Electropherogram Summary Continued ...



Overall Results for sample 1 : test3 12hpi B quiagen

RNA Area:	455.3	RNA Integrity Number (RIN):	N/A (B.02.08)
RNA Concentration:	385 ng/μl	Result Flagging Color:	
rRNA Ratio [28s / 18s]:	0.0	Result Flagging Label:	RIN N/A

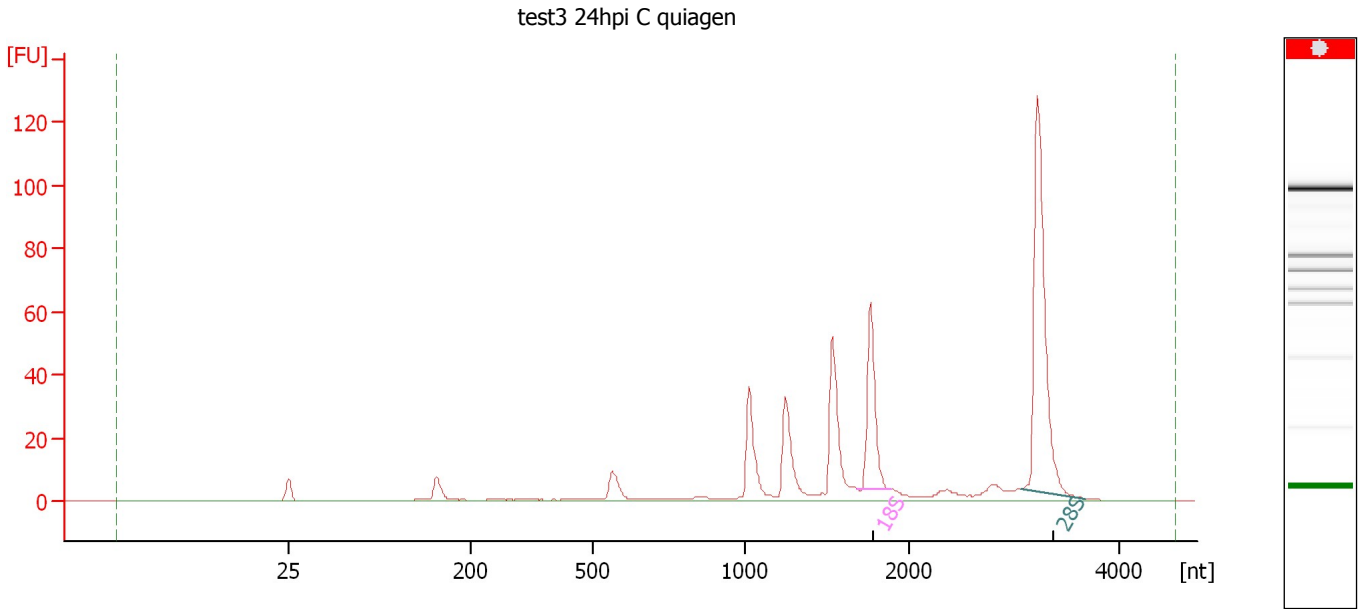
Fragment table for sample 1 : test3 12hpi B quiagen

Name	Start Size [nt]	End Size [nt]	Area	% of total Area
18S	1,700	1,845	65.0	14.3
28S	3,058	3,615	158.0	34.7

Assay Class: Eukaryote Total RNA Nano
Data Path: C:\...ents and Settings\Bioanalyzer\2012-02-27\2012-02-27_003.xad

Created: 2/27/2012 3:40:34 PM
Modified: 2/27/2012 4:22:30 PM

Electropherogram Summary Continued ...



Overall Results for sample 2 : test3 24hpi C quiagen

RNA Area:	368.7	RNA Integrity Number (RIN):	N/A (B.02.08)
RNA Concentration:	312 ng/μl	Result Flagging Color:	
rRNA Ratio [28s / 18s]:	0.0	Result Flagging Label:	RIN N/A

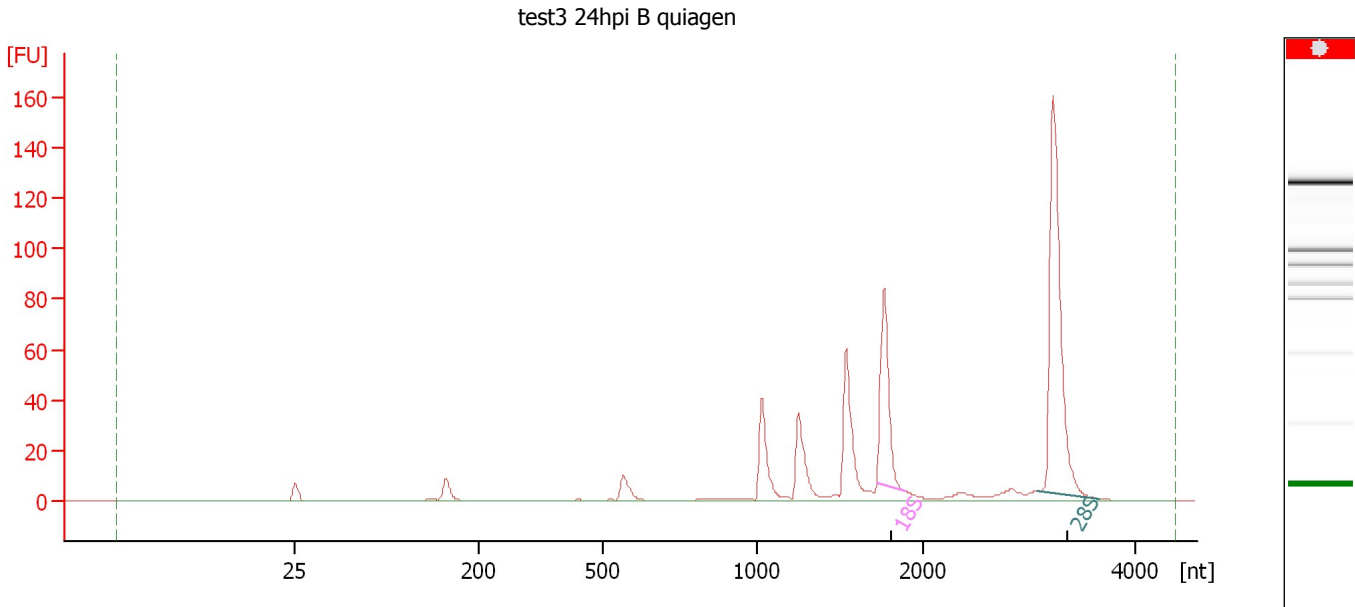
Fragment table for sample 2 : test3 24hpi C quiagen

Name	Start Size [nt]	End Size [nt]	Area	% of total Area
18S	1,681	1,883	45.7	12.4
28S	3,058	3,668	111.7	30.3

Assay Class: Eukaryote Total RNA Nano
 Data Path: C:\...ents and Settings\Bioanalyzer\2012-02-27\2012-02-27_003.xad

Created: 2/27/2012 3:40:34 PM
 Modified: 2/27/2012 4:22:30 PM

Electropherogram Summary Continued ...



Overall Results for sample 3 : test3 24hpi B quiagen

RNA Area:	408.7	RNA Integrity Number (RIN):	N/A (B.02.08)
RNA Concentration:	346 ng/μl	Result Flagging Color:	
rRNA Ratio [28s / 18s]:	0.0	Result Flagging Label:	RIN N/A

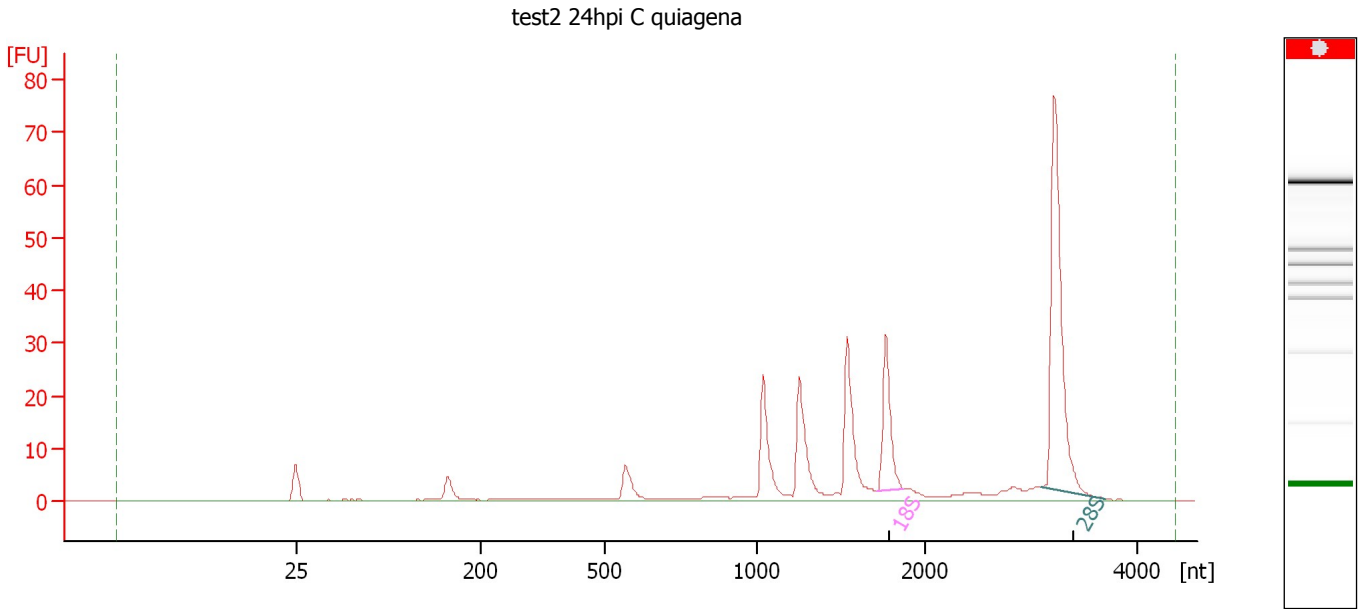
Fragment table for sample 3 : test3 24hpi B quiagen

Name	Start Size [nt]	End Size [nt]	Area	% of total Area
18S	1,723	1,888	61.4	15.0
28S	3,084	3,657	137.8	33.7

Assay Class: Eukaryote Total RNA Nano
 Data Path: C:\...ents and Settings\Bioanalyzer\2012-02-27\2012-02-27_003.xad

Created: 2/27/2012 3:40:34 PM
 Modified: 2/27/2012 4:22:30 PM

Electropherogram Summary Continued ...



Overall Results for sample 4 : test2 24hpi C quiagena

RNA Area:	216.8	RNA Integrity Number (RIN):	N/A (B.02.08)
RNA Concentration:	183 ng/μl	Result Flagging Color:	
rRNA Ratio [28s / 18s]:	0.0	Result Flagging Label:	RIN N/A

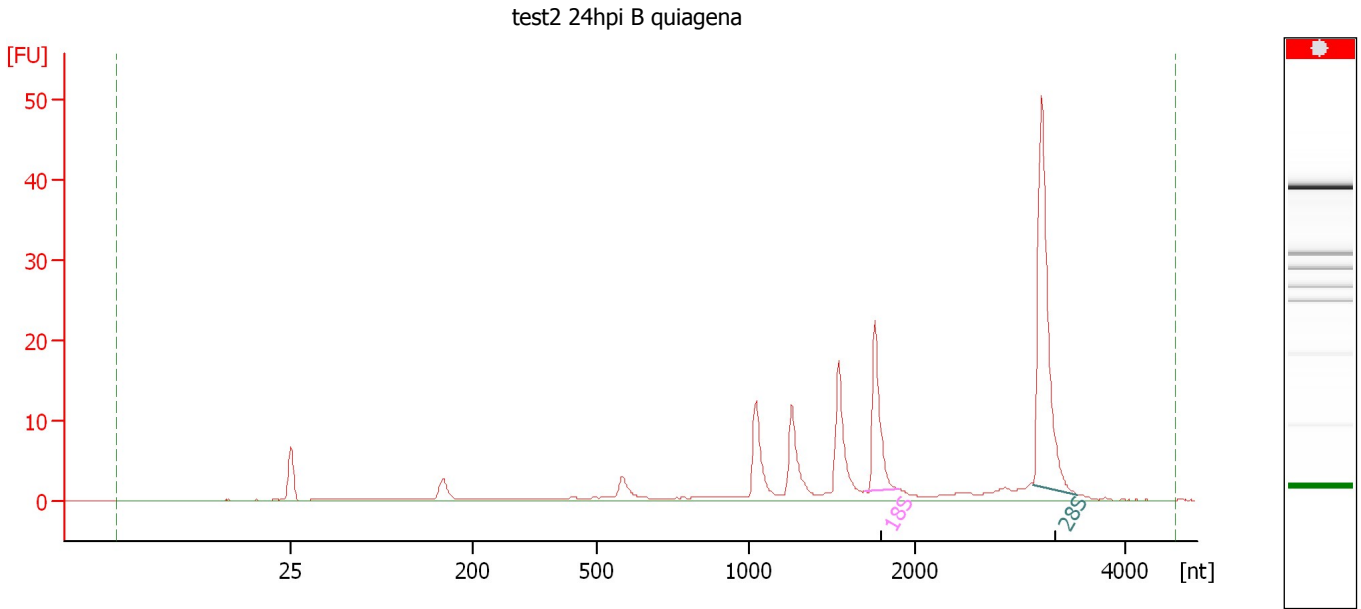
Fragment table for sample 4 : test2 24hpi C quiagena

Name	Start Size [nt]	End Size [nt]	Area	% of total Area
18S	1,711	1,863	21.5	9.9
28S	3,081	3,694	63.1	29.1

Assay Class: Eukaryote Total RNA Nano
Data Path: C:\...ents and Settings\Bioanalyzer\2012-02-27\2012-02-27_003.xad

Created: 2/27/2012 3:40:34 PM
Modified: 2/27/2012 4:22:30 PM

Electropherogram Summary Continued ...



Overall Results for sample 5 : test2 24hpi B quiagena

RNA Area:	136.0	RNA Integrity Number (RIN):	N/A (B.02.08)
RNA Concentration:	115 ng/μl	Result Flagging Color:	
rRNA Ratio [28s / 18s]:	0.0	Result Flagging Label:	RIN N/A

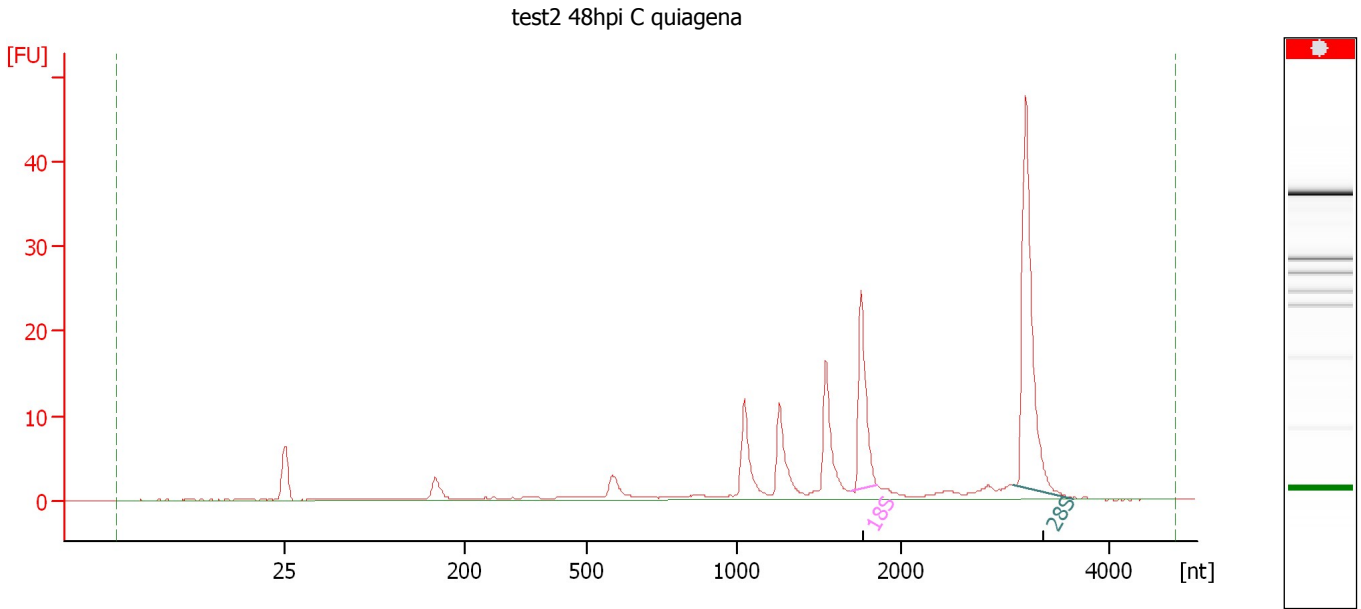
Fragment table for sample 5 : test2 24hpi B quiagena

Name	Start Size [nt]	End Size [nt]	Area	% of total Area
18S	1,703	1,904	15.2	11.2
28S	3,134	3,550	40.2	29.6

Assay Class: Eukaryote Total RNA Nano
Data Path: C:\...ents and Settings\Bioanalyzer\2012-02-27\2012-02-27_003.xad

Created: 2/27/2012 3:40:34 PM
Modified: 2/27/2012 4:22:30 PM

Electropherogram Summary Continued ...



Overall Results for sample 6 : test2 48hpi C quiagena

RNA Area:	127.7	RNA Integrity Number (RIN):	N/A (B.02.08)
RNA Concentration:	108 ng/μl	Result Flagging Color:	
rRNA Ratio [28s / 18s]:	0.0	Result Flagging Label:	RIN N/A

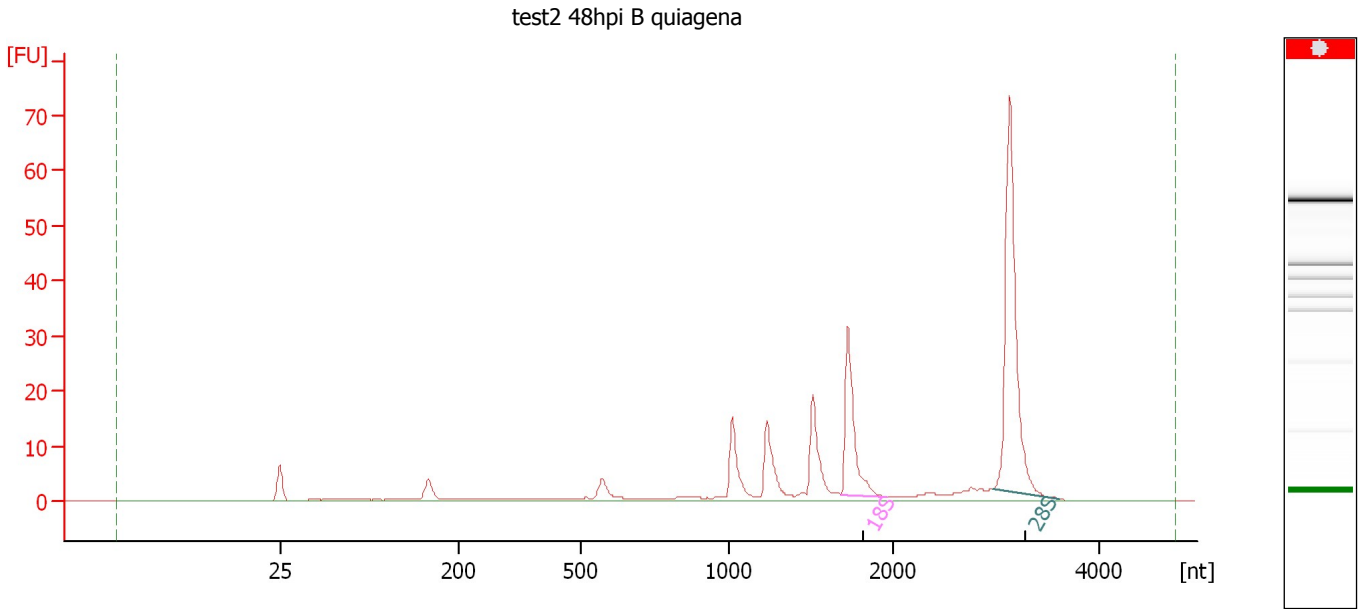
Fragment table for sample 6 : test2 48hpi C quiagena

Name	Start Size [nt]	End Size [nt]	Area	% of total Area
18S	1,697	1,852	16.5	12.9
28S	3,068	3,642	37.6	29.5

Assay Class: Eukaryote Total RNA Nano
Data Path: C:\...ents and Settings\Bioanalyzer\2012-02-27\2012-02-27_003.xad

Created: 2/27/2012 3:40:34 PM
Modified: 2/27/2012 4:22:30 PM

Electropherogram Summary Continued ...



Overall Results for sample 7 : test2 48hpi B quiagena

RNA Area:	179.2	RNA Integrity Number (RIN):	N/A (B.02.08)
RNA Concentration:	152 ng/μl	Result Flagging Color:	
rRNA Ratio [28s / 18s]:	2.5	Result Flagging Label:	RIN N/A

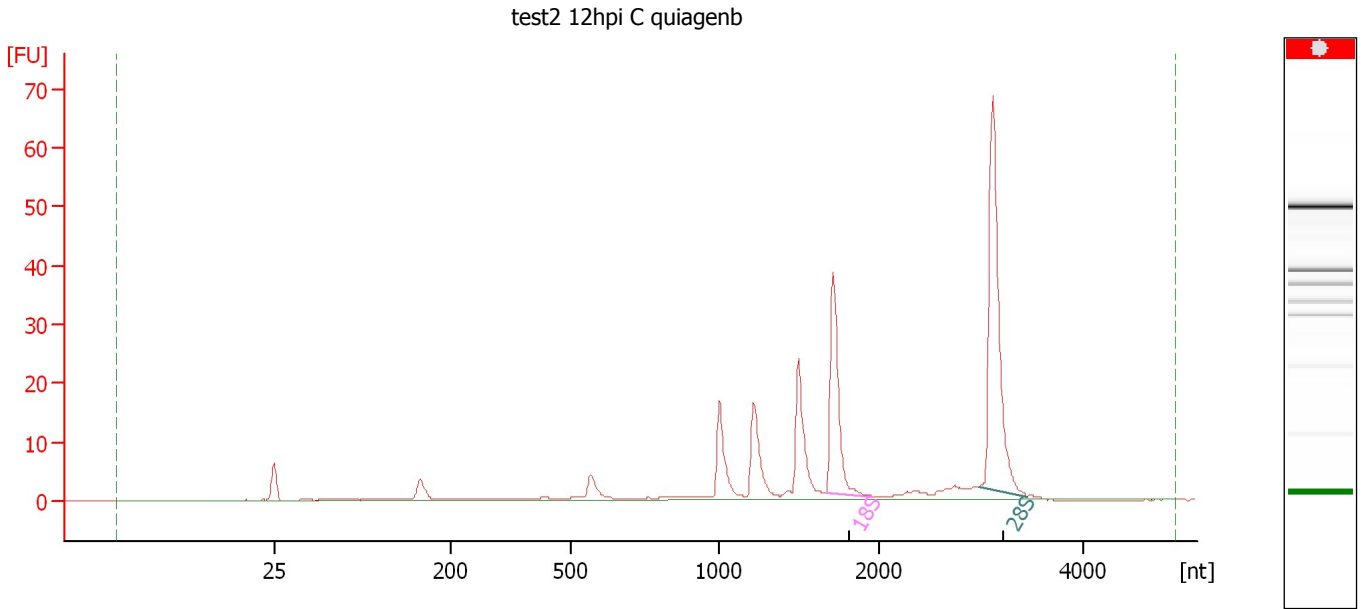
Fragment table for sample 7 : test2 48hpi B quiagena

Name	Start Size [nt]	End Size [nt]	Area	% of total Area
18S	1,688	1,964	25.7	14.3
28S	2,975	3,604	63.5	35.4

Assay Class: Eukaryote Total RNA Nano
Data Path: C:\...ents and Settings\Bioanalyzer\2012-02-27\2012-02-27_003.xad

Created: 2/27/2012 3:40:34 PM
Modified: 2/27/2012 4:22:30 PM

Electropherogram Summary Continued ...



Overall Results for sample 8 : test2 12hpi C quiagenb

RNA Area: 183.2 RNA Integrity Number (RIN): N/A (B.02.08)
RNA Concentration: 155 ng/μl Result Flagging Color:
rRNA Ratio [28s / 18s]: 1.9 Result Flagging Label: RIN N/A

Fragment table for sample 8 : test2 12hpi C quiagenb

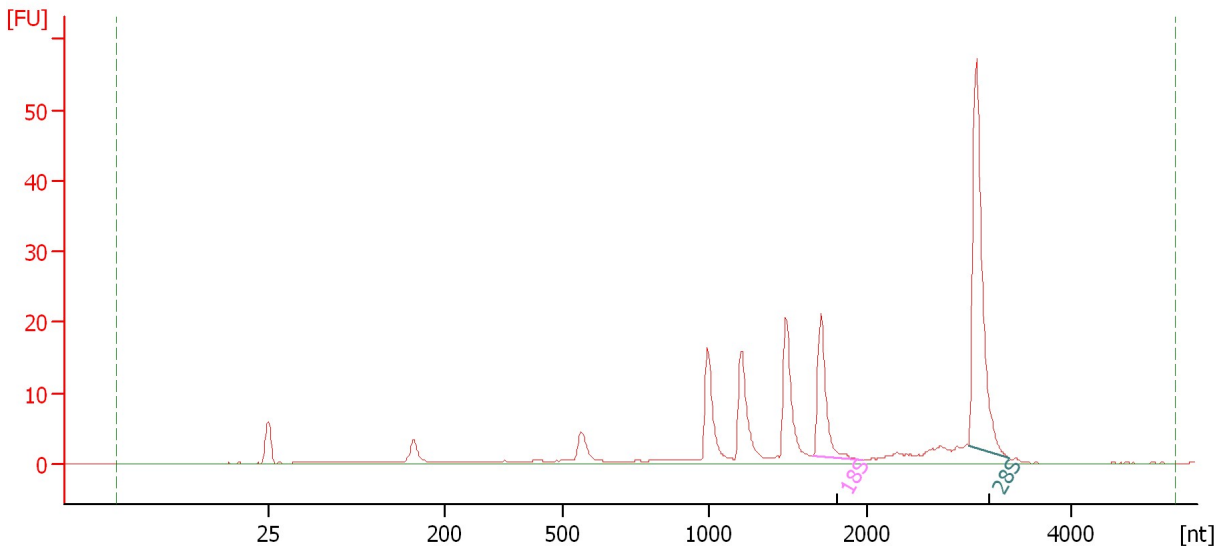
Name	Start Size [nt]	End Size [nt]	Area	% of total Area
18S	1,673	1,966	30.0	16.4
28S	2,979	3,448	56.1	30.6

Assay Class: Eukaryote Total RNA Nano
Data Path: C:\...ents and Settings\Bioanalyzer\2012-02-27\2012-02-27_003.xad

Created: 2/27/2012 3:40:34 PM
Modified: 2/27/2012 4:22:30 PM

Electropherogram Summary Continued ...

test2 12hpi B quiagenb



Overall Results for sample 9 : test2 12hpi B quiagenb

RNA Area: 154.0 RNA Integrity Number (RIN): N/A (B.02.08)
RNA Concentration: 130 ng/μl Result Flagging Color:
rRNA Ratio [28s / 18s]: 2.7 Result Flagging Label: RIN N/A

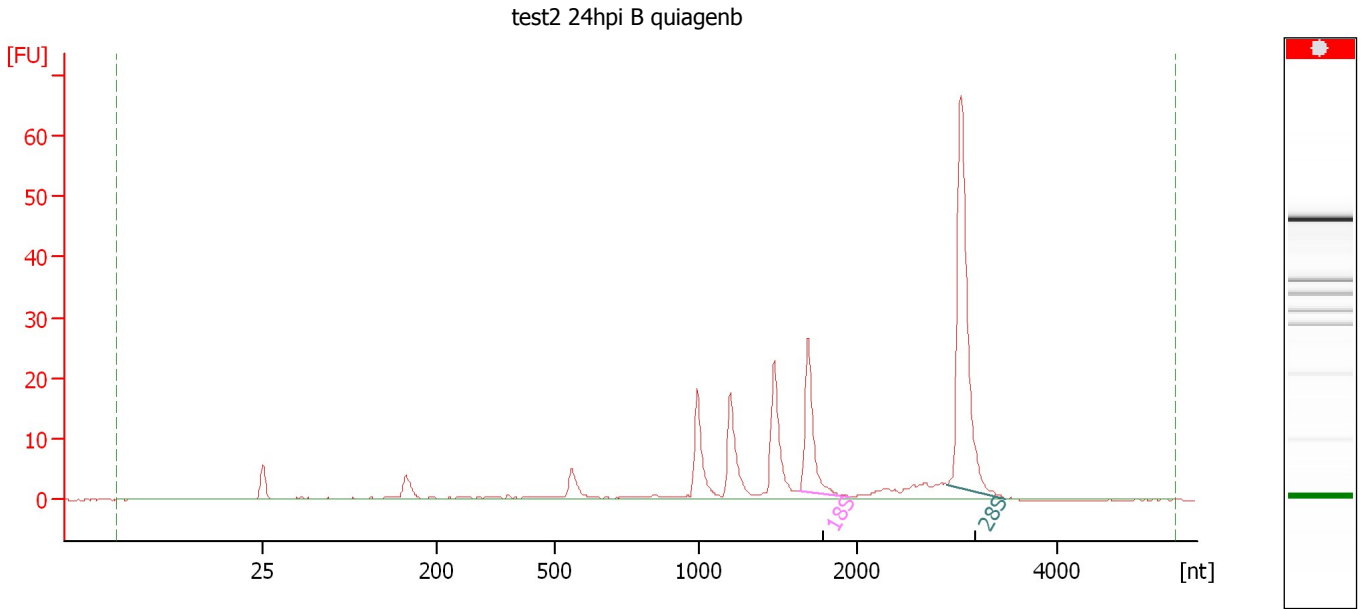
Fragment table for sample 9 : test2 12hpi B quiagenb

Name	Start Size [nt]	End Size [nt]	Area	% of total Area
18S	1,659	1,967	16.5	10.7
28S	2,991	3,391	45.1	29.3

Assay Class: Eukaryote Total RNA Nano
Data Path: C:\...ents and Settings\Bioanalyzer\2012-02-27\2012-02-27_003.xad

Created: 2/27/2012 3:40:34 PM
Modified: 2/27/2012 4:22:30 PM

Electropherogram Summary Continued ...



Overall Results for sample 10 : test2 24hpi B quiagenb

RNA Area:	192.9	RNA Integrity Number (RIN):	N/A (B.02.08)
RNA Concentration:	163 ng/μl	Result Flagging Color:	
rRNA Ratio [28s / 18s]:	2.7	Result Flagging Label:	RIN N/A

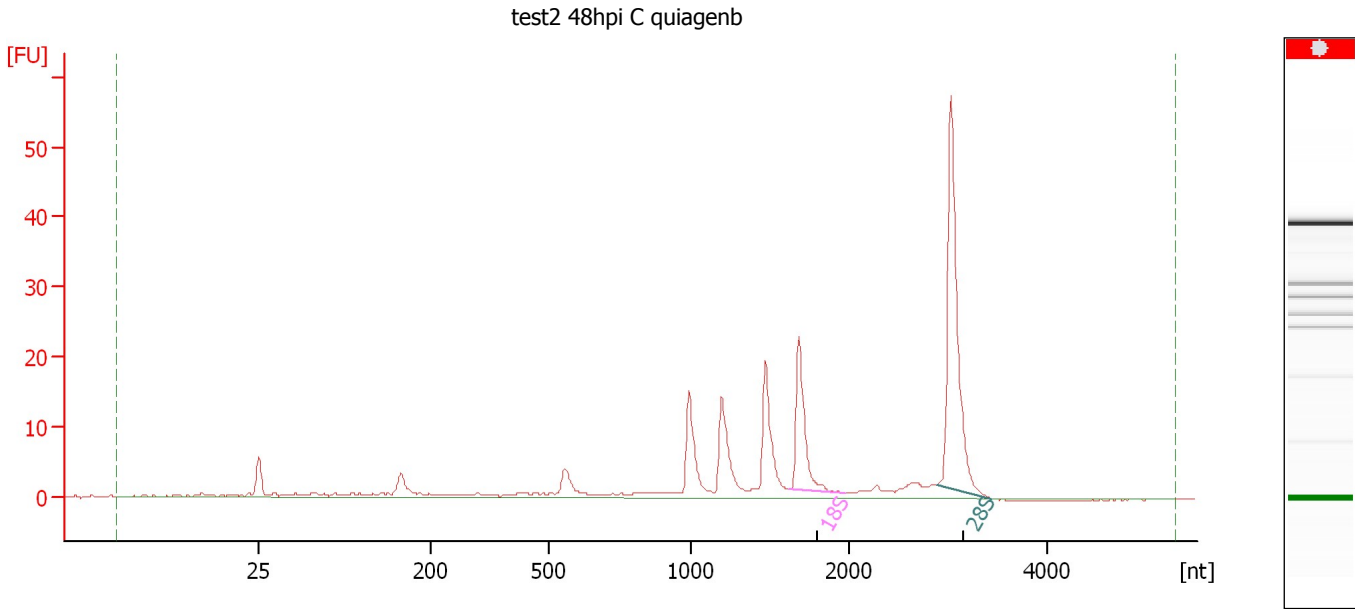
Fragment table for sample 10 : test2 24hpi B quiagenb

Name	Start Size [nt]	End Size [nt]	Area	% of total Area
18S	1,630	1,948	21.6	11.2
28S	2,897	3,471	58.0	30.1

Assay Class: Eukaryote Total RNA Nano
Data Path: C:\...ents and Settings\Bioanalyzer\2012-02-27\2012-02-27_003.xad

Created: 2/27/2012 3:40:34 PM
Modified: 2/27/2012 4:22:30 PM

Electropherogram Summary Continued ...



Overall Results for sample 11 : test2 48hpi C quiagenb

RNA Area: 191.6 RNA Integrity Number (RIN): N/A (B.02.08)
RNA Concentration: 162 ng/μl Result Flagging Color:
rRNA Ratio [28s / 18s]: 2.6 Result Flagging Label: RIN N/A

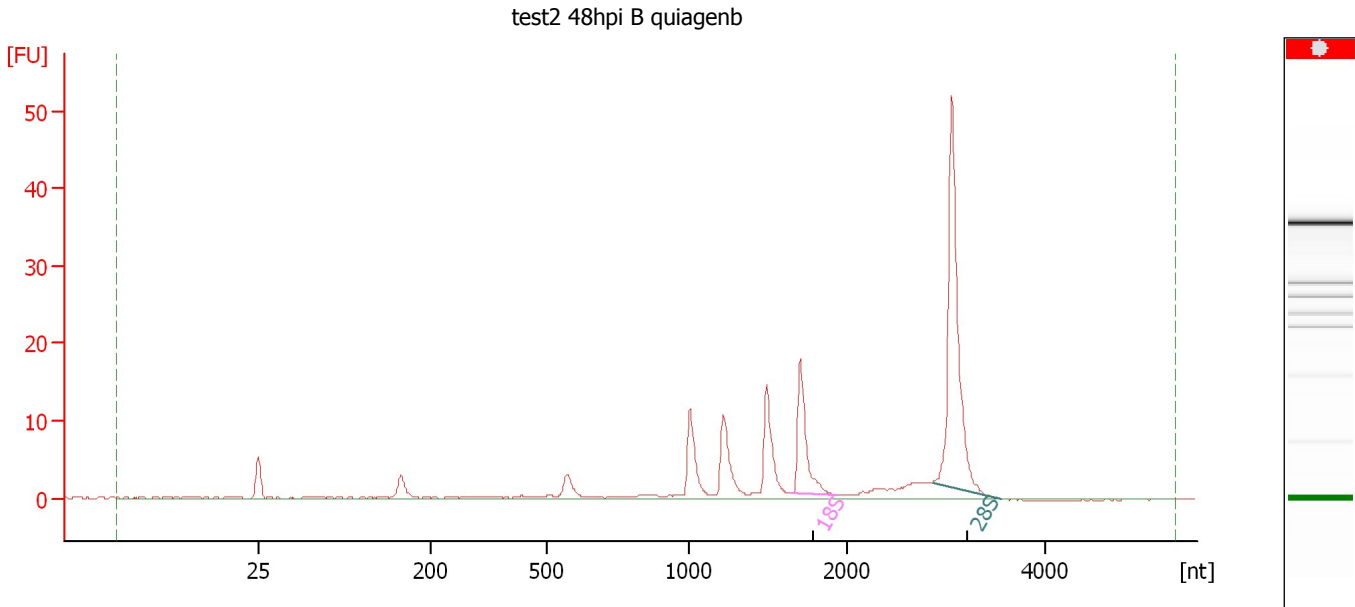
Fragment table for sample 11 : test2 48hpi C quiagenb

Name	Start Size [nt]	End Size [nt]	Area	% of total Area
18S	1,615	1,977	19.3	10.1
28S	2,885	3,431	50.2	26.2

Assay Class: Eukaryote Total RNA Nano
Data Path: C:\...ents and Settings\Bioanalyzer\2012-02-27\2012-02-27_003.xad

Created: 2/27/2012 3:40:34 PM
Modified: 2/27/2012 4:22:30 PM

Electropherogram Summary Continued ...



Overall Results for sample 12 : test2 48hpi B quiagenb

RNA Area: 133.0 RNA Integrity Number (RIN): N/A (B.02.08)
RNA Concentration: 113 ng/μl Result Flagging Color:
rRNA Ratio [28s / 18s]: 3.1 Result Flagging Label: RIN N/A

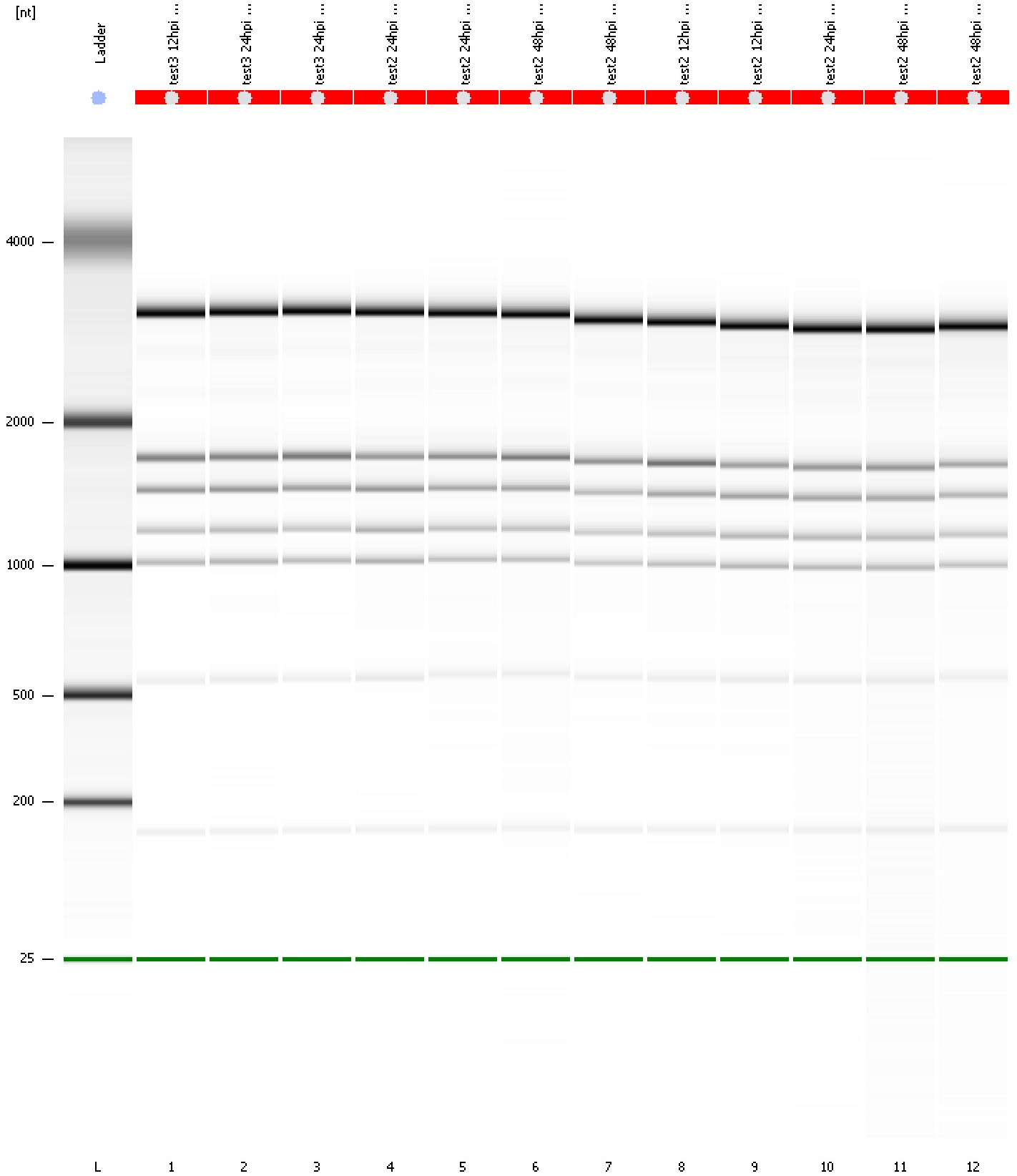
Fragment table for sample 12 : test2 48hpi B quiagenb

Name	Start Size [nt]	End Size [nt]	Area	% of total Area
18S	1,649	1,943	14.6	11.0
28S	2,866	3,552	45.8	34.4

Assay Class: Eukaryote Total RNA Nano
Data Path: C:\...ents and Settings\Bioanalyzer\2012-02-27\2012-02-27_003.xad

Created: 2/27/2012 3:40:34 PM
Modified: 2/27/2012 4:22:30 PM

Gel Image

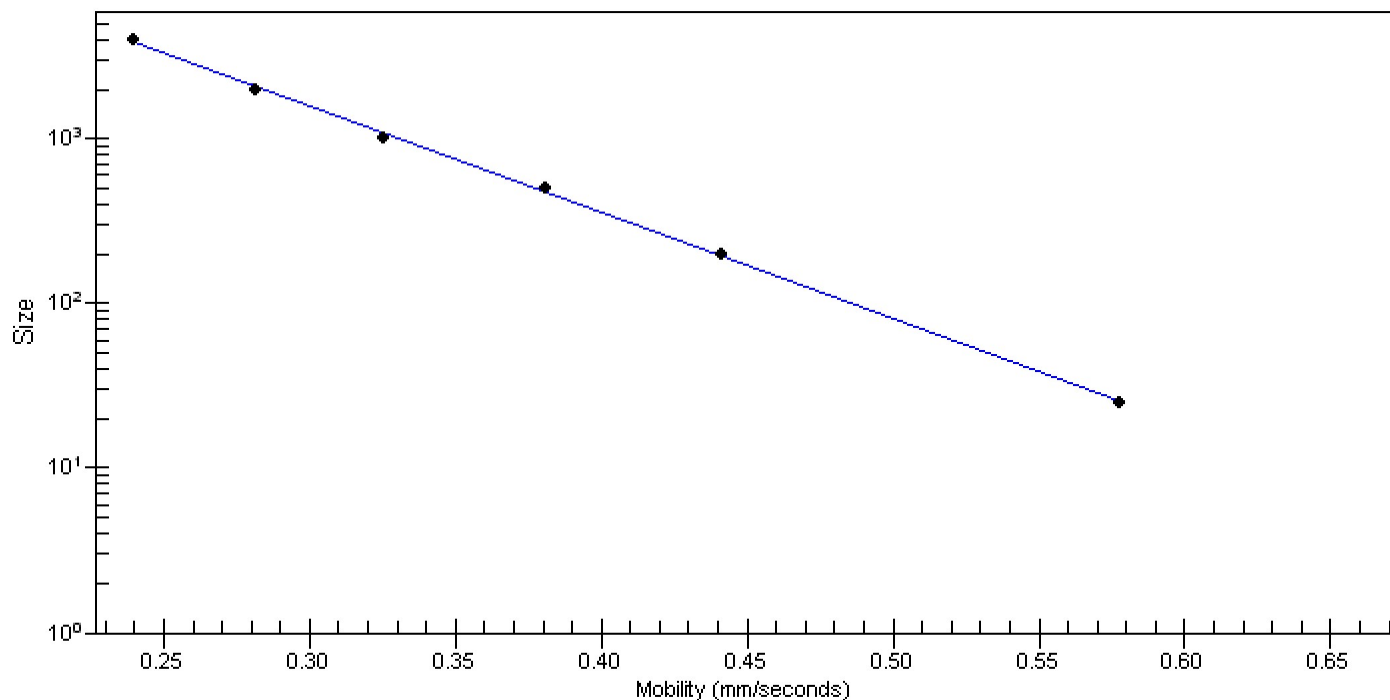


Assay Class: Eukaryote Total RNA Nano
Data Path: C:\...ents and Settings\Bioanalyzer\2012-02-27\2012-02-27_003.xad

Created: 2/27/2012 3:40:34 PM
Modified: 2/27/2012 4:22:30 PM

Curves

Standard Curve



Assay Class: Eukaryote Total RNA Nano
 Data Path: C:\...ents and Settings\Bioanalyzer\2012-02-27\2012-02-27_003.xad

Created: 2/27/2012 3:40:34 PM
 Modified: 2/27/2012 4:22:30 PM

Run Logbook

Description	Number	Source	Category	Sub Category	Time	Time Zone	User	Host
Run ended on port 1 (Number of wells acquired: 13)		Instrument	Run		2/27/2012 4:04:24 PM	(GMT --08:00) Pacific Standard Time	UC Davis	D8XSMGH1
Run started on port 1 (File: C:\Documents and Settings\Bioanalyzer\2012-02-27\2012-02-27_003.xad)		Instrument	Run		2/27/2012 3:40:39 PM	(GMT --08:00) Pacific Standard Time	UC Davis	D8XSMGH1
Product Number : G2938B		Instrument	Run		2/27/2012 3:40:39 PM	(GMT --08:00) Pacific Standard Time	UC Davis	D8XSMGH1
Name :		Instrument	Run		2/27/2012 3:40:39 PM	(GMT --08:00) Pacific Standard Time	UC Davis	D8XSMGH1
Vendor : Agilent Technologies		Instrument	Run		2/27/2012 3:40:39 PM	(GMT --08:00) Pacific Standard Time	UC Davis	D8XSMGH1
Serial# : DE13701086		Instrument	Run		2/27/2012 3:40:39 PM	(GMT --08:00) Pacific Standard Time	UC Davis	D8XSMGH1
Firmware : C.01.069		Instrument	Run		2/27/2012 3:40:39 PM	(GMT --08:00) Pacific Standard Time	UC Davis	D8XSMGH1
Cartridge : Electrode		Instrument	Run		2/27/2012 3:40:39 PM	(GMT --08:00) Pacific Standard Time	UC Davis	D8XSMGH1