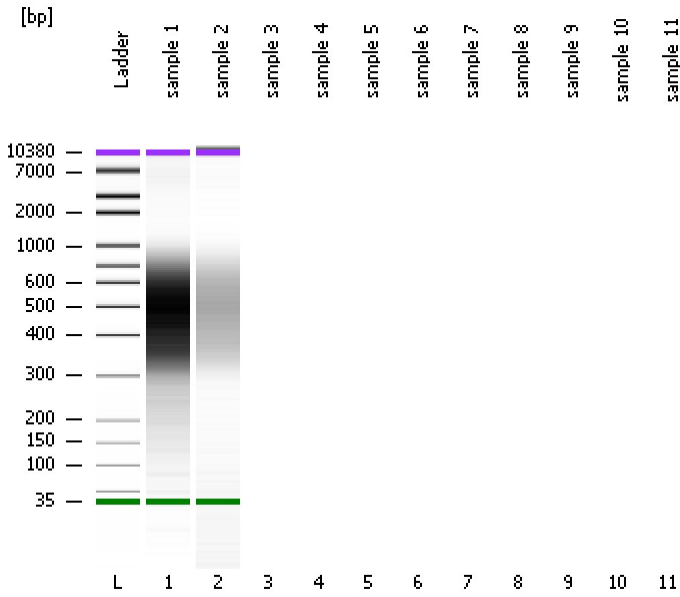


Assay Class: High Sensitivity DNA Assay
Data Path: C:\...ents and Settings\Bioanalyzer\2012-02-27\2012-02-27_004.xad

Created: 2/27/2012 4:37:30 PM
Modified: 2/27/2012 4:56:46 PM

Electrophoresis File Run Summary



Instrument Information:

Instrument Name: DE13701086 Firmware: C.01.069
Serial#: DE13701086 Type: G2938B

Assay Information:

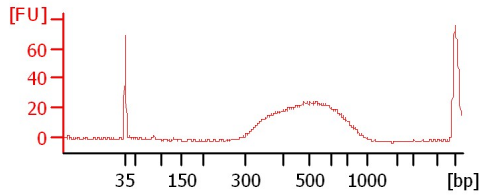
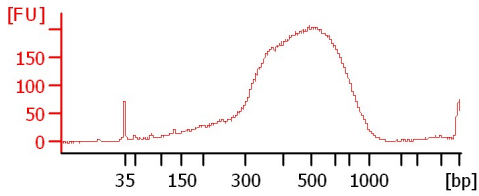
Assay Origin Path: C:\Program Files\Agilent\2100 bioanalyzer\2100 expert\assays\dsDNA\High Sensitivity DNA.xsy
Assay Class: High Sensitivity DNA Assay
Version: 1.03
Assay Comments: Copyright © 2003-2010 Agilent Technologies

Chip Information:

Chip Lot #:
Reagent Kit Lot #:
Chip Comments:

sample 1

sample 2



Assay Class: High Sensitivity DNA Assay
 Data Path: C:\...ents and Settings\Bioanalyzer\2012-02-27\2012-02-27_004.xad

Created: 2/27/2012 4:37:30 PM
 Modified: 2/27/2012 4:56:46 PM

Electrophoresis File Run Summary (Chip Summary)

Sample Name	Sample Comment	Rest. Digest	Status	Observation	Result Label	Result Color
sample 1		<input type="checkbox"/>	✓			
sample 2		<input type="checkbox"/>	✓			
sample 3		<input type="checkbox"/>				
sample 4		<input type="checkbox"/>				
sample 5		<input type="checkbox"/>				
sample 6		<input type="checkbox"/>				
sample 7		<input type="checkbox"/>				
sample 8		<input type="checkbox"/>				
sample 9		<input type="checkbox"/>				
sample 10		<input type="checkbox"/>				
sample 11		<input type="checkbox"/>				
Ladder		<input type="checkbox"/>	✓			

Chip Lot #

Reagent Kit Lot #

Chip Comments :

Assay Class: High Sensitivity DNA Assay
Data Path: C:\...ents and Settings\Bioanalyzer\2012-02-27\2012-02-27_004.xad

Created: 2/27/2012 4:37:30 PM
Modified: 2/27/2012 4:56:46 PM

Electrophoresis Assay Details

General Analysis Settings

Number of Available Sample and Ladder Wells (Max.) : 12
Minimum Visible Range [s] : 32
Maximum Visible Range [s] : 138
Start Analysis Time Range [s] : 33
End Analysis Time Range [s] : 137.5
Ladder Concentration [pg/μl] : 1950
Uses Standard Area for Ladder Fragments
Lower Marker Concentration [pg/μl] : 125
Upper Marker Concentration [pg/μl] : 75
Used Upper Marker for Quantitation
Standard Curve Fit is Point to Point
Show Data Aligned to Lower and Upper Marker

Integrator Settings

Integration Start Time [s] : 33.05
Integration End Time [s] : 137
Slope Threshold : 0.8
Height Threshold [FU] : 5
Area Threshold : 0.1
Width Threshold [s] : 0.6
Baseline Plateau [s] : 0.5

Filter Settings

Filter Width [s] : 0.5
Polynomial Order : 4

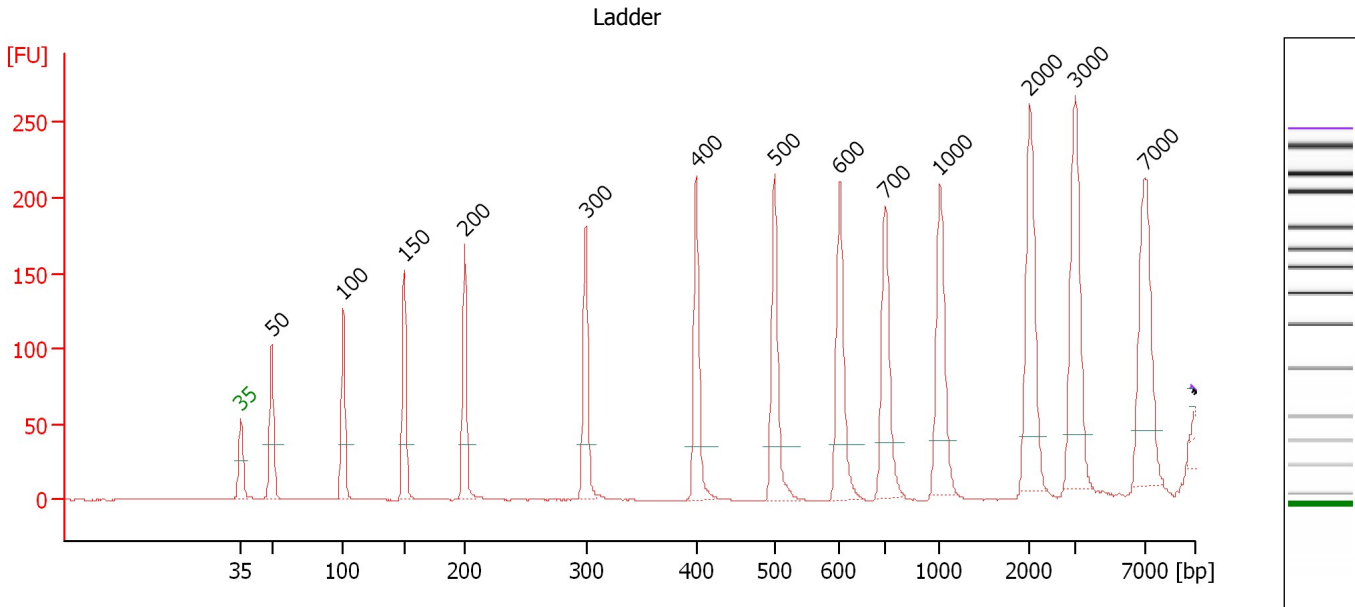
Ladder

Ladder Peak	Size	Area
1	35	160
2	50	210
3	100	208
4	150	221
5	200	242
6	300	270
7	400	305
8	500	306
9	600	336
10	700	321
11	1000	366
12	2000	413
13	3000	411
14	7000	400
15	10380	214

Assay Class: High Sensitivity DNA Assay
 Data Path: C:\...ents and Settings\Bioanalyzer\2012-02-27\2012-02-27_004.xad

Created: 2/27/2012 4:37:30 PM
 Modified: 2/27/2012 4:56:46 PM

Electropherogram Summary



Overall Results for Ladder

Noise: 0.2

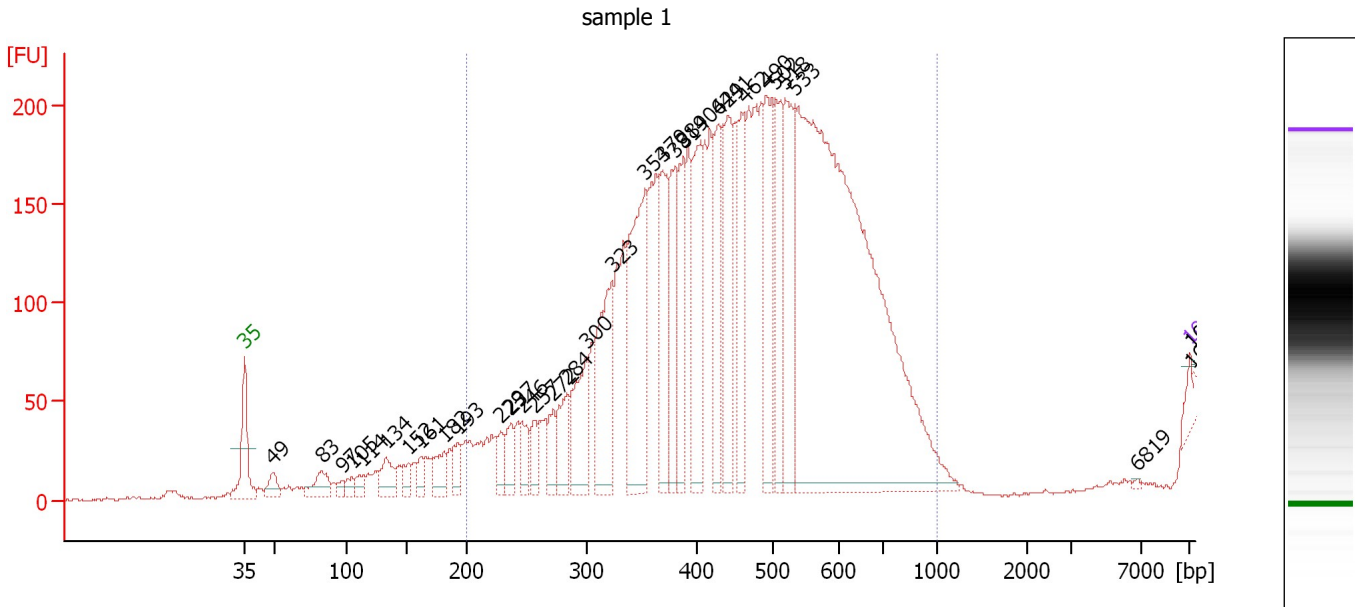
Peak table for Ladder

Peak	Size [bp]	Conc. [pg/μl]	Molarity [pmol/l]	Observations
1	35	125.00	5,411.3	Lower Marker
2	50	150.00	4,545.5	Ladder Peak
3	100	150.00	2,272.7	Ladder Peak
4	150	150.00	1,515.2	Ladder Peak
5	200	150.00	1,136.4	Ladder Peak
6	300	150.00	757.6	Ladder Peak
7	400	150.00	568.2	Ladder Peak
8	500	150.00	454.5	Ladder Peak
9	600	150.00	378.8	Ladder Peak
10	700	150.00	324.7	Ladder Peak
11	1,000	150.00	227.3	Ladder Peak
12	2,000	150.00	113.6	Ladder Peak
13	3,000	150.00	75.8	Ladder Peak
14	7,000	150.00	32.5	Ladder Peak
15	10,380	75.00	10.9	Upper Marker
16	10,488	0.00	0.0	
17	10,632	0.00	0.0	

Assay Class: High Sensitivity DNA Assay
 Data Path: C:\...ents and Settings\Bioanalyzer\2012-02-27\2012-02-27_004.xad

Created: 2/27/2012 4:37:30 PM
 Modified: 2/27/2012 4:56:46 PM

Electropherogram Summary Continued ...



Overall Results for sample 1 : sample 1

Number of peaks found: 34 Corr. Area 1: 4,059.5
 Noise: 0.8

Peak table for sample 1 : sample 1

Peak	Size [bp]	Conc. [pg/μl]	Molarity [pmol/l]	Observations
1	0	0.00	0.0	
2	35	125.00	5,411.3	Lower Marker
3	49	154.73	4,801.2	
4	83	234.85	4,289.6	
5	97	56.74	884.0	
6	105	82.10	1,187.6	
7	114	92.93	1,234.7	
8	134	239.45	2,717.5	
9	152	127.90	1,274.1	
10	161	104.47	980.8	
11	182	220.57	1,838.8	
12	193	175.38	1,375.0	
13	229	181.52	1,202.1	
14	237	195.13	1,246.3	
15	246	197.56	1,216.2	
16	257	161.31	951.8	
17	272	200.50	1,115.5	
18	284	322.15	1,719.3	
19	300	581.86	2,939.6	
20	323	903.74	4,235.5	
21	354	1,430.00	6,128.9	
22	370	710.20	2,907.6	
23	381	622.94	2,478.5	
24	389	508.34	1,982.0	
25	406	829.40	3,095.8	
26	429	574.67	2,031.6	

Assay Class: High Sensitivity DNA Assay
 Data Path: C:\...ents and Settings\Bioanalyzer\2012-02-27\2012-02-27_004.xad


Created: 2/27/2012 4:37:30 PM
 Modified: 2/27/2012 4:56:46 PM

Electropherogram Summary Continued ...

... Peak table for sample 1 : sample 1

Peak	Size [bp]	Conc. [pg/μl]	Molarity [pmol/l]	Observations
27	441	747.96	2,570.2	
28	462	578.96	1,897.8	
29	490	758.33	2,343.2	
30	502	620.69	1,871.7	
31	518	882.08	2,579.3	
32	533	6,383.28	18,144.2	
33	6,819	8.63	1.9	
34	10,380	75.00	10.9	Upper Marker
35	10,416	0.00	0.0	
36	10,525	0.00	0.0	

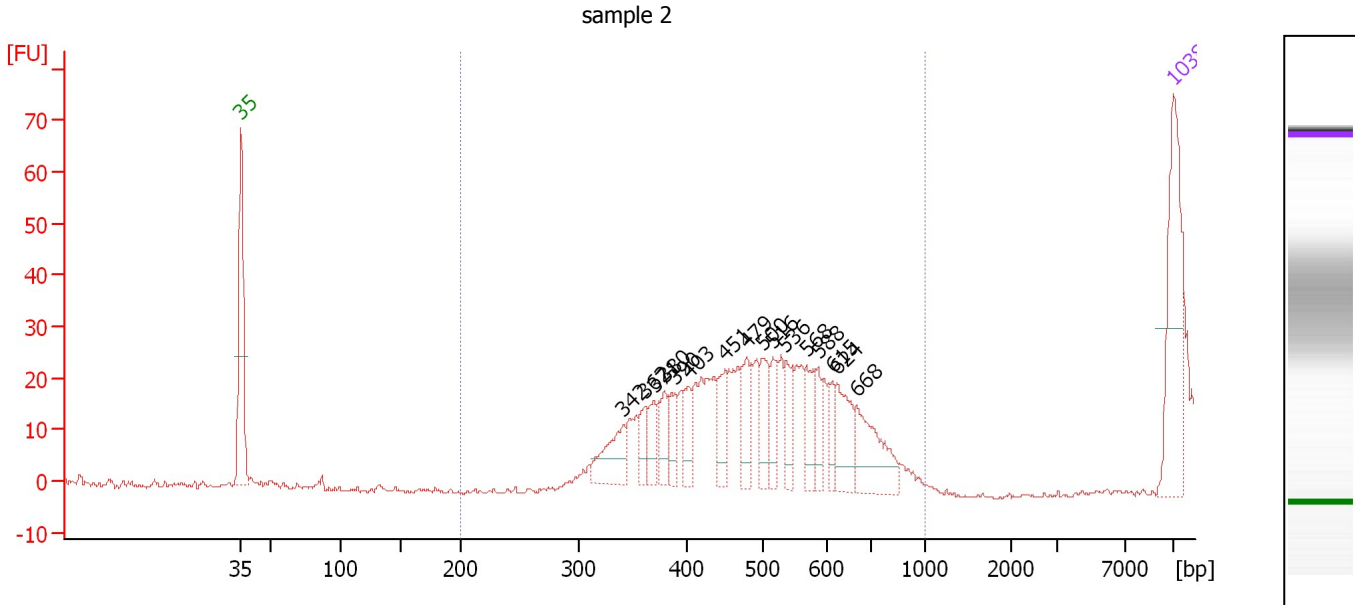
Region table for sample 1 : sample 1

From [bp]	Molarity [pmol/l]	Average Size [bp]	Conc. [pg/μl]	To [bp]	Corr. Area	% of Total	Size distribution in CV [%]	Color
200	60,414.9	467	16,957.46	1,000	4,059.5	99	24.6	

Assay Class: High Sensitivity DNA Assay
 Data Path: C:\...ents and Settings\Bioanalyzer\2012-02-27\2012-02-27_004.xad

Created: 2/27/2012 4:37:30 PM
 Modified: 2/27/2012 4:56:46 PM

Electropherogram Summary Continued ...



Overall Results for sample 2 : sample 2

Number of peaks found: 16 Corr. Area 1: 69.6
 Noise: 0.4

Peak table for sample 2 : sample 2

Peak	Size [bp]	Conc. [pg/μl]	Molarity [pmol/l]	Observations
1	35	125.00	5,411.3	Lower Marker
2	342	42.38	187.6	
3	362	19.12	79.9	
4	371	22.61	92.3	
5	380	25.47	101.5	
6	390	24.46	95.1	
7	403	24.04	90.4	
8	451	26.78	90.0	
9	479	30.73	97.1	
10	500	30.90	93.6	
11	516	23.54	69.1	
12	536	23.89	67.5	
13	568	29.13	77.7	
14	588	18.06	46.6	
15	615	16.19	39.9	
16	624	37.58	91.2	
17	668	55.59	126.2	
18	10,380	75.00	10.9	Upper Marker

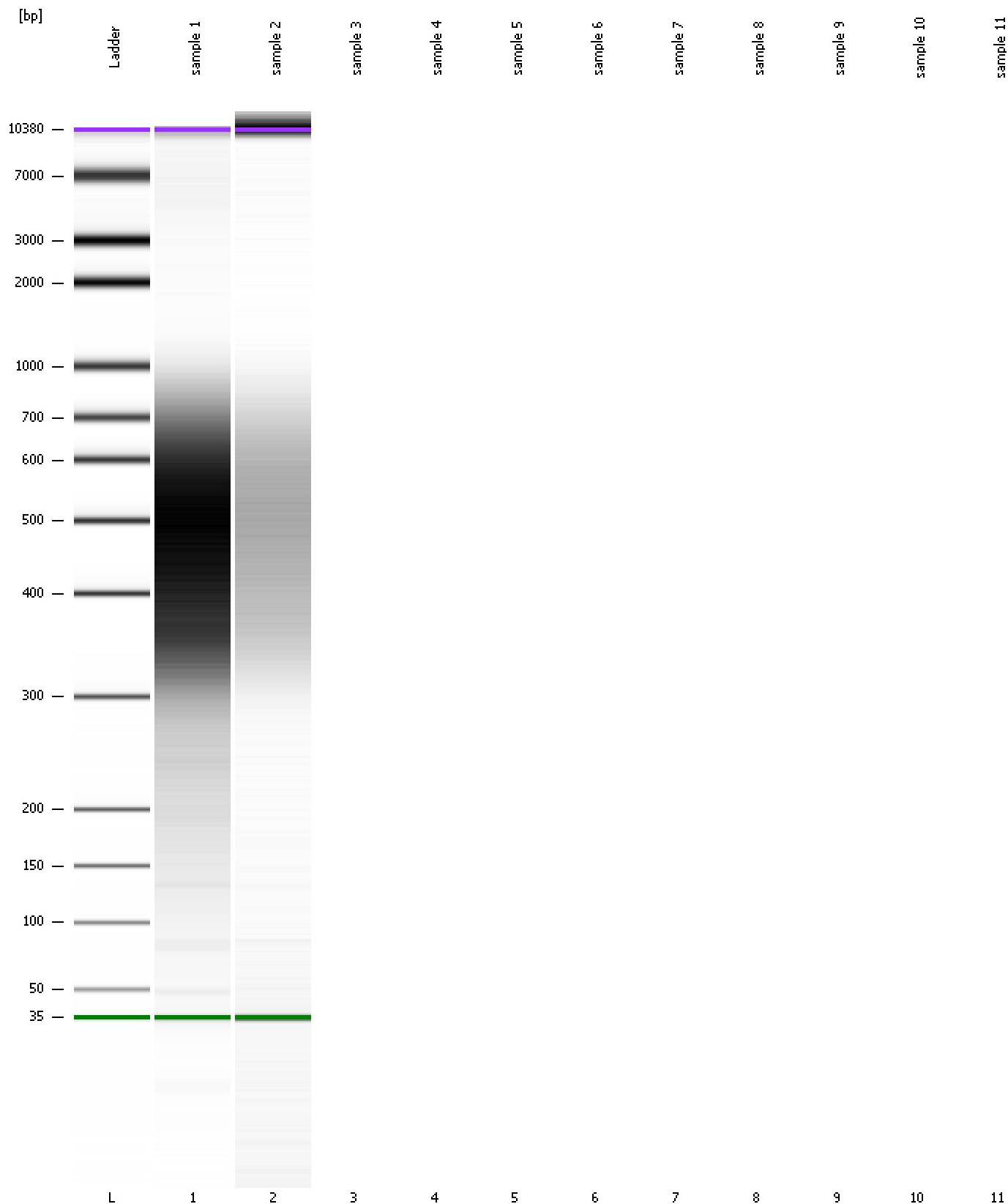
Region table for sample 2 : sample 2

From [bp]	Molarity [pmol/l]	Average Size [bp]	Conc. [pg/μl]	To [bp]	Corr. Area	% of Total	Size distribution in CV [%]	Color
200	296.6	483	92.96	1,000	69.6	94	11.8	Blue

Assay Class: High Sensitivity DNA Assay
Data Path: C:\...ents and Settings\Bioanalyzer\2012-02-27\2012-02-27_004.xad

Created: 2/27/2012 4:37:30 PM
Modified: 2/27/2012 4:56:46 PM

Gel Image

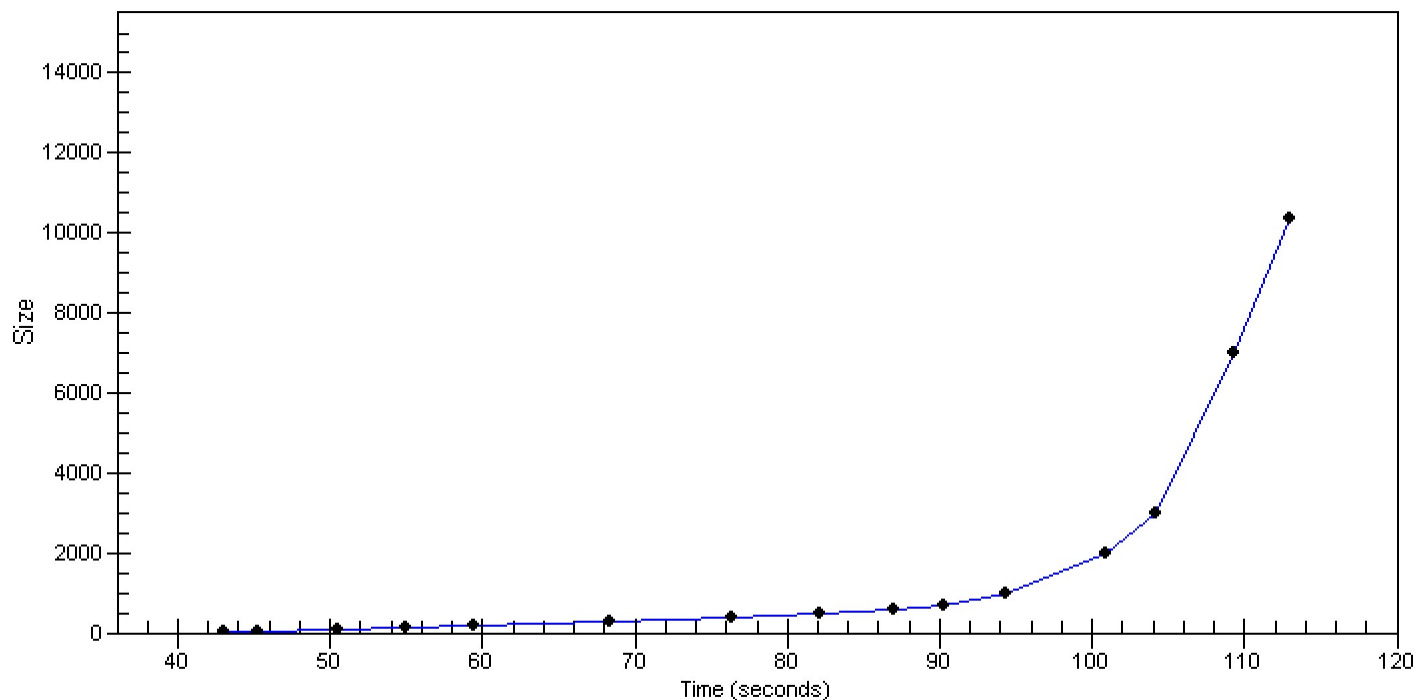


Assay Class: High Sensitivity DNA Assay
Data Path: C:\...ents and Settings\Bioanalyzer\2012-02-27\2012-02-27_004.xad

Created: 2/27/2012 4:37:30 PM
Modified: 2/27/2012 4:56:46 PM

Curves

Standard Curve



Assay Class: High Sensitivity DNA Assay
Data Path: C:\...ents and Settings\Bioanalyzer\2012-02-27\2012-02-27_004.xad

Created: 2/27/2012 4:37:30 PM
Modified: 2/27/2012 4:56:46 PM

Invalid Samples

Sample 3 has not been run, no results available.

Sample 4 has not been run, no results available.

Sample 5 has not been run, no results available.

Sample 6 has not been run, no results available.

Sample 7 has not been run, no results available.

Sample 8 has not been run, no results available.

Sample 9 has not been run, no results available.

Sample 10 has not been run, no results available.

Sample 11 has not been run, no results available.

Assay Class: High Sensitivity DNA Assay
 Data Path: C:\...ents and Settings\Bioanalyzer\2012-02-27\2012-02-27_004.xad

Created: 2/27/2012 4:37:30 PM
 Modified: 2/27/2012 4:56:46 PM

Run Logbook

Description	Number	Source	Category	Sub Category	Time	Time Zone	User	Host
Run ended on port 1 (Number of wells acquired: 3)		Instrument	Run		2/27/2012 4:53:06 PM	(GMT --08:00) Pacific Standard Time	UC Davis	D8XSMGH1
Run started on port 1 (File: C:\Documents and Settings\Bioanalyzer\2012-02-27\2012-02-27_004.xad)		Instrument	Run		2/27/2012 4:37:35 PM	(GMT --08:00) Pacific Standard Time	UC Davis	D8XSMGH1
Product Number : G2938B		Instrument	Run		2/27/2012 4:37:35 PM	(GMT --08:00) Pacific Standard Time	UC Davis	D8XSMGH1
Name :		Instrument	Run		2/27/2012 4:37:35 PM	(GMT --08:00) Pacific Standard Time	UC Davis	D8XSMGH1
Vendor : Agilent Technologies		Instrument	Run		2/27/2012 4:37:35 PM	(GMT --08:00) Pacific Standard Time	UC Davis	D8XSMGH1
Serial# : DE13701086		Instrument	Run		2/27/2012 4:37:35 PM	(GMT --08:00) Pacific Standard Time	UC Davis	D8XSMGH1
Firmware : C.01.069		Instrument	Run		2/27/2012 4:37:35 PM	(GMT --08:00) Pacific Standard Time	UC Davis	D8XSMGH1
Cartridge : Electrode		Instrument	Run		2/27/2012 4:37:35 PM	(GMT --08:00) Pacific Standard Time	UC Davis	D8XSMGH1