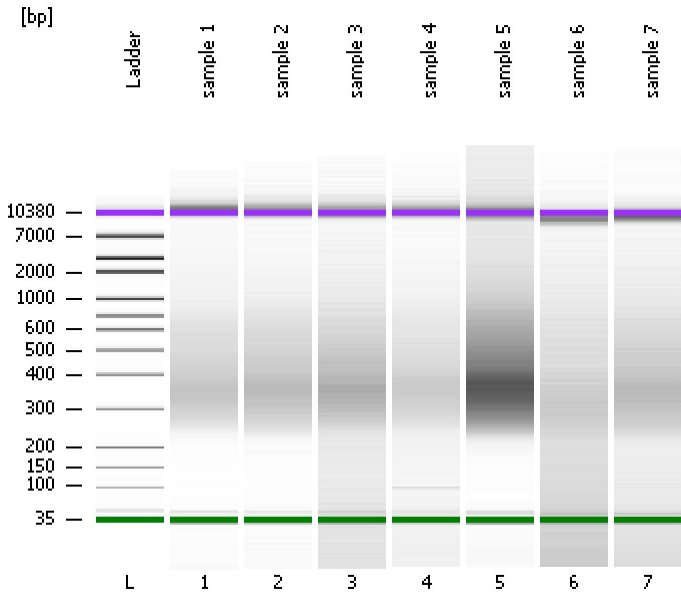


Assay Class: High Sensitivity DNA Assay  
Data Path: C:\...nts and Settings\Bioanalyzer\2012-02-28\2012-02-28\_001B.xad

Created: 2/28/2012 9:27:41 AM  
Modified: 2/28/2012 9:59:14 AM

### Electrophoresis File Run Summary



#### Instrument Information:

Instrument Name: DE13701086      Firmware: C.01.069  
Serial#: DE13701086      Type: G2938B

#### Assay Information:

Assay Origin Path: C:\Program Files\Agilent\2100 bioanalyzer\2100 expert\assays\dsDNA\High Sensitivity DNA.xsy  
Assay Class: High Sensitivity DNA Assay  
Version: 1.03  
Assay Comments: Copyright © 2003-2010 Agilent Technologies

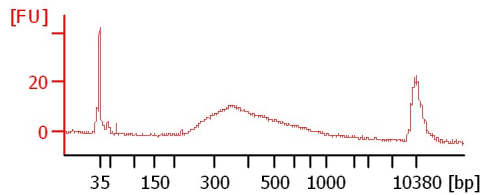
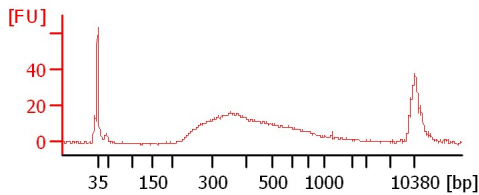
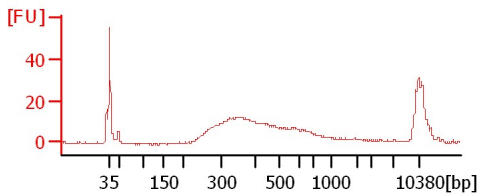
#### Chip Information:

Chip Lot #:      Reagent Kit Lot #:      Chip Comments:

sample 1

sample 2

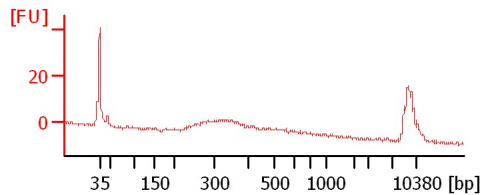
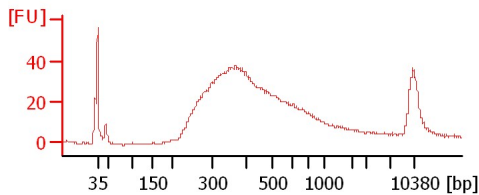
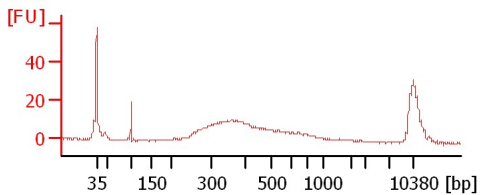
sample 3



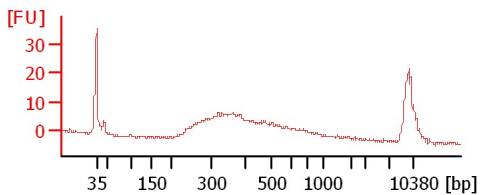
sample 4

sample 5

sample 6



sample 7



Assay Class: High Sensitivity DNA Assay  
 Data Path: C:\...nts and Settings\Bioanalyzer\2012-02-28\2012-02-28\_001B.xad

Created: 2/28/2012 9:27:41 AM  
 Modified: 2/28/2012 9:59:14 AM

**Electrophoresis File Run Summary (Chip Summary)**

Sample Name	Sample Comment	Rest. Digest	Status	Observation	Result Label	Result Color
sample 1		<input type="checkbox"/>	<input checked="" type="checkbox"/>			
sample 2		<input type="checkbox"/>	<input checked="" type="checkbox"/>			
sample 3		<input type="checkbox"/>	<input checked="" type="checkbox"/>			
sample 4		<input type="checkbox"/>	<input checked="" type="checkbox"/>			
sample 5		<input type="checkbox"/>	<input checked="" type="checkbox"/>			
sample 6		<input type="checkbox"/>	<input checked="" type="checkbox"/>			
sample 7		<input type="checkbox"/>	<input checked="" type="checkbox"/>			
Ladder		<input type="checkbox"/>	<input checked="" type="checkbox"/>			

**Chip Lot #** **Reagent Kit Lot #**

**Chip Comments :**

Assay Class: High Sensitivity DNA Assay  
Data Path: C:\...nts and Settings\Bioanalyzer\2012-02-28\2012-02-28\_001B.xad

Created: 2/28/2012 9:27:41 AM  
Modified: 2/28/2012 9:59:14 AM

**Electrophoresis Assay Details**

**General Analysis Settings**

Number of Available Sample and Ladder Wells (Max.) : 12  
Minimum Visible Range [s] : 32  
Maximum Visible Range [s] : 138  
Start Analysis Time Range [s] : 33  
End Analysis Time Range [s] : 137.5  
Ladder Concentration [pg/μl] : 1950  
Uses Standard Area for Ladder Fragments  
Lower Marker Concentration [pg/μl] : 125  
Upper Marker Concentration [pg/μl] : 75  
Used Upper Marker for Quantitation  
Standard Curve Fit is Point to Point  
Show Data Aligned to Lower and Upper Marker

**Integrator Settings**

Integration Start Time [s] : 33.05  
Integration End Time [s] : 137  
Slope Threshold : 0.8  
Height Threshold [FU] : 5  
Area Threshold : 0.1  
Width Threshold [s] : 0.6  
Baseline Plateau [s] : 0.5

**Filter Settings**

Filter Width [s] : 0.5  
Polynomial Order : 4

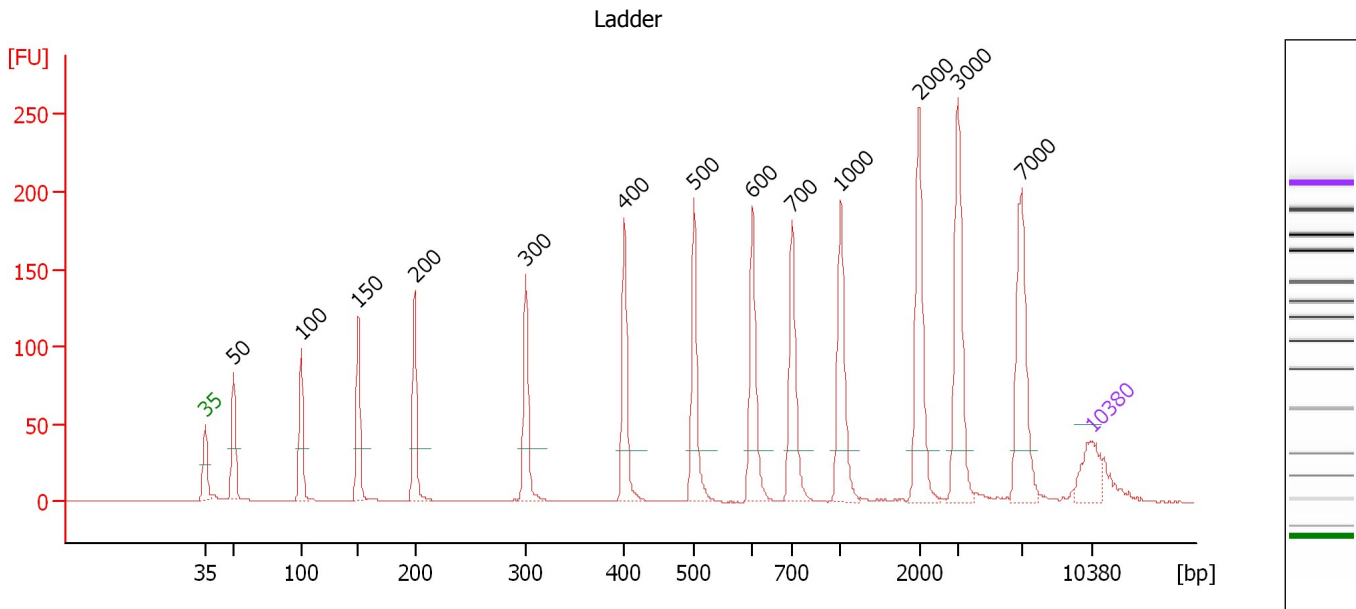
**Ladder**

Ladder Peak	Size	Area
1	35	160
2	50	210
3	100	208
4	150	221
5	200	242
6	300	270
7	400	305
8	500	306
9	600	336
10	700	321
11	1000	366
12	2000	413
13	3000	411
14	7000	400
15	10380	214

Assay Class: High Sensitivity DNA Assay  
 Data Path: C:\...nts and Settings\Bioanalyzer\2012-02-28\2012-02-28\_001B.xad

Created: 2/28/2012 9:27:41 AM  
 Modified: 2/28/2012 9:59:14 AM

**Electropherogram Summary**



**Overall Results for Ladder**

Noise: 0.1

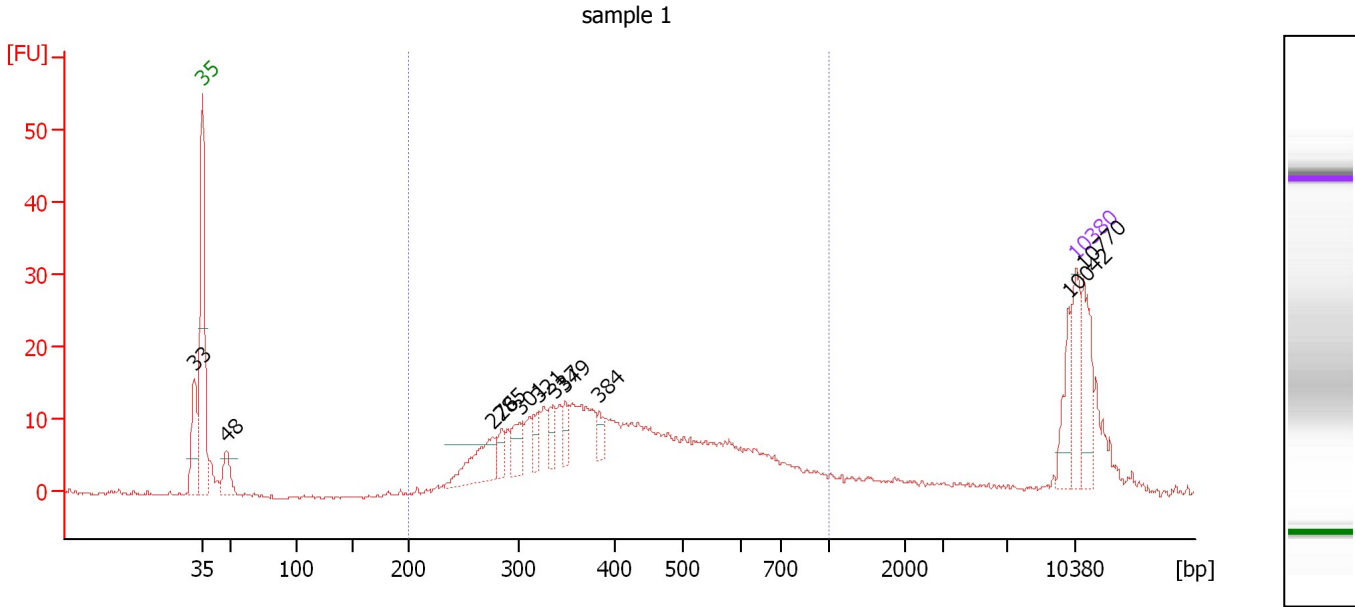
**Peak table for Ladder**

Peak	Size [bp]	Conc. [pg/μl]	Molarity [pmol/l]	Observations
1	35	125.00	5,411.3	Lower Marker
2	50	150.00	4,545.5	Ladder Peak
3	100	150.00	2,272.7	Ladder Peak
4	150	150.00	1,515.2	Ladder Peak
5	200	150.00	1,136.4	Ladder Peak
6	300	150.00	757.6	Ladder Peak
7	400	150.00	568.2	Ladder Peak
8	500	150.00	454.5	Ladder Peak
9	600	150.00	378.8	Ladder Peak
10	700	150.00	324.7	Ladder Peak
11	1,000	150.00	227.3	Ladder Peak
12	2,000	150.00	113.6	Ladder Peak
13	3,000	150.00	75.8	Ladder Peak
14	7,000	150.00	32.5	Ladder Peak
15	10,380	75.00	10.9	Upper Marker

Assay Class: High Sensitivity DNA Assay  
 Data Path: C:\...nts and Settings\Bioanalyzer\2012-02-28\2012-02-28\_001B.xad

Created: 2/28/2012 9:27:41 AM  
 Modified: 2/28/2012 9:59:14 AM

**Electropherogram Summary Continued ...**



**Overall Results for sample 1 : sample 1**

Number of peaks found: 11                      Corr. Area 1: 298.5  
 Noise: 0.3

**Peak table for sample 1 : sample 1**

Peak	Size [bp]	Conc. [pg/μl]	Molarity [pmol/l]	Observations
1	33	0.00	0.0	
2	35	125.00	5,411.3	Lower Marker
3	48	79.07	2,511.5	
4	276	134.51	737.4	
5	285	44.20	235.3	
6	301	61.41	308.8	
7	321	42.41	200.4	
8	337	43.20	194.4	
9	349	39.61	172.1	
10	384	28.24	111.6	
11	10,042	57.98	8.7	
12	10,380	75.00	10.9	Upper Marker
13	10,770	0.00	0.0	

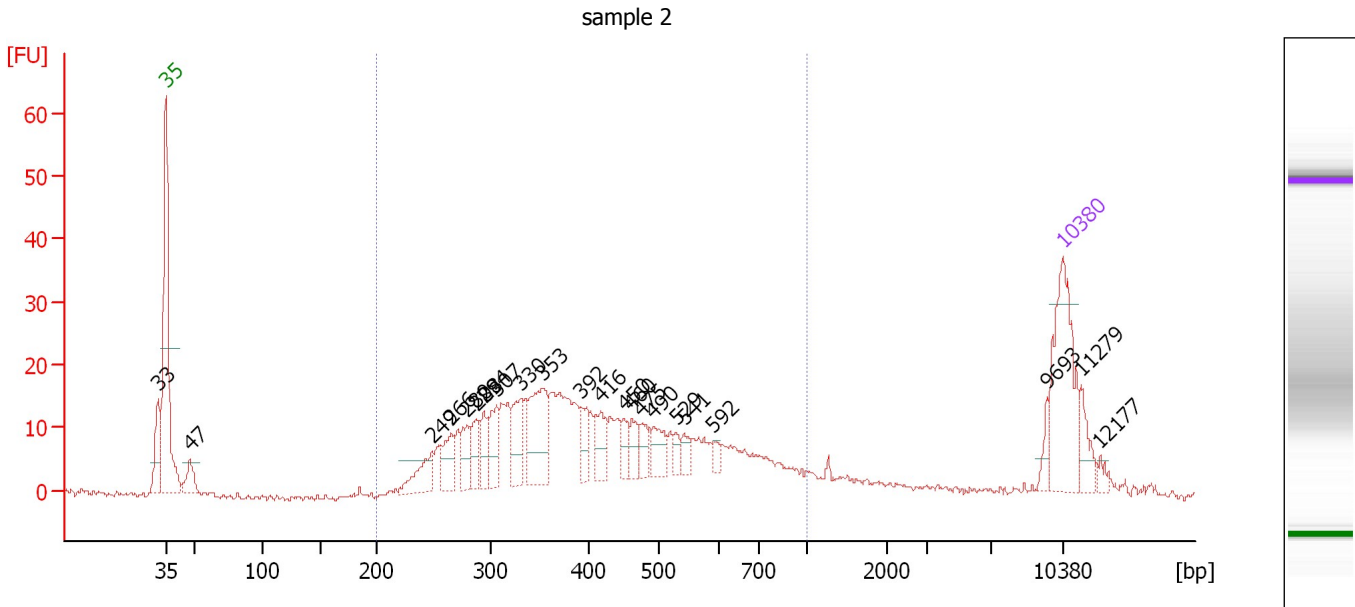
**Region table for sample 1 : sample 1**

From [bp]	Molarity [pmol/l]	Average Size [bp]	Conc. [pg/μl]	To [bp]	Corr. Area	% of Total	Size distribution in CV [%]	Color
200	6,560.4	428	1,633.07	1,000	298.5	75	32.6	Blue

Assay Class: High Sensitivity DNA Assay  
 Data Path: C:\...nts and Settings\Bioanalyzer\2012-02-28\2012-02-28\_001B.xad

Created: 2/28/2012 9:27:41 AM  
 Modified: 2/28/2012 9:59:14 AM

**Electropherogram Summary Continued ...**



**Overall Results for sample 2 : sample 2**

Number of peaks found: 22                      Corr. Area 1: 435.9  
 Noise: 0.5

**Peak table for sample 2 : sample 2**

Peak	Size [bp]	Conc. [pg/μl]	Molarity [pmol/l]	Observations
1	33	0.00	0.0	
2	35	125.00	5,411.3	Lower Marker
3	47	23.24	743.9	
4	249	32.82	200.0	
5	266	28.13	160.4	
6	280	22.60	122.4	
7	288	22.32	117.6	
8	294	20.57	105.9	
9	307	31.10	153.7	
10	330	35.83	164.4	
11	353	66.49	285.2	
12	392	19.31	74.7	
13	416	23.26	84.7	
14	450	13.43	45.2	
15	460	15.50	51.0	
16	475	15.16	48.4	
17	490	22.92	70.8	
18	529	8.48	24.3	
19	541	10.23	28.6	
20	592	5.45	14.0	
21	9,693	7.60	1.2	
22	10,380	75.00	10.9	Upper Marker
23	11,279	0.00	0.0	
24	12,177	0.00	0.0	

Assay Class: High Sensitivity DNA Assay  
Data Path: C:\...nts and Settings\Bioanalyzer\2012-02-28\2012-02-28\_001B.xad

Created: 2/28/2012 9:27:41 AM  
Modified: 2/28/2012 9:59:14 AM

**Electropherogram Summary Continued ...**

... Region table for sample 2 :

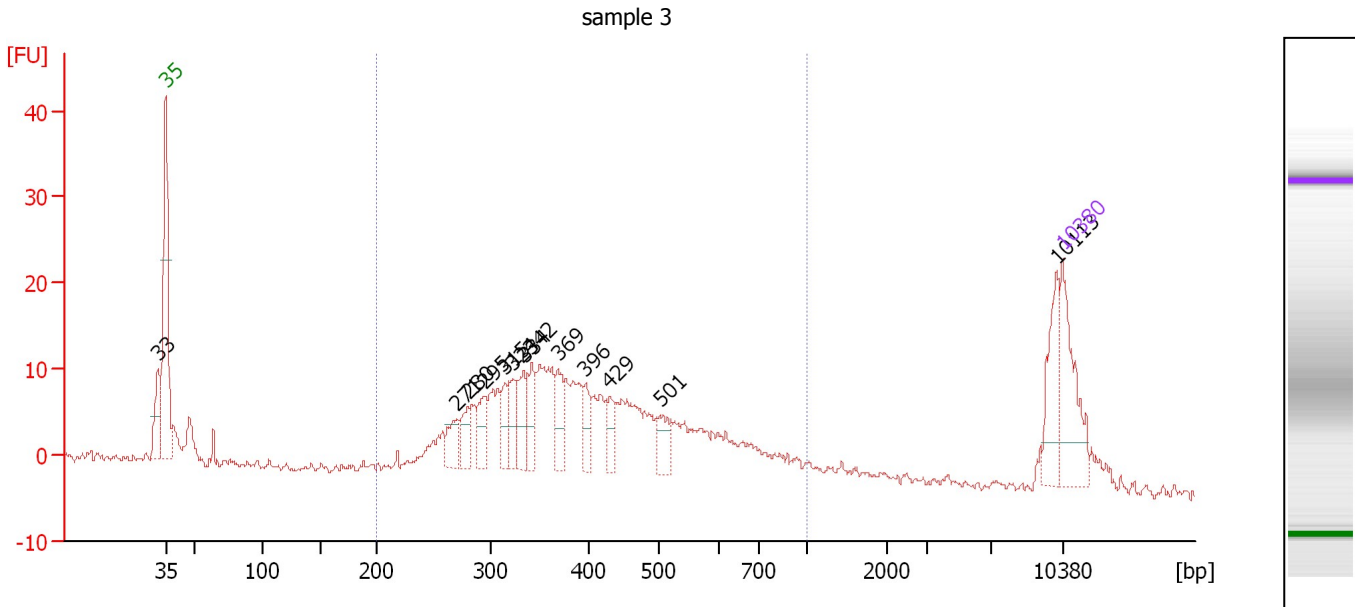
sample 2

From [bp]	Molarity [pmol/l]	Average Size [bp]	Conc. [pg/μl]	To [bp]	Corr. Area	% of Total	Size distribution in CV [%]	Color
200	3,284.2	433	812.31	1,000	435.9	83	34.6	■

Assay Class: High Sensitivity DNA Assay  
 Data Path: C:\...nts and Settings\Bioanalyzer\2012-02-28\2012-02-28\_001B.xad

Created: 2/28/2012 9:27:41 AM  
 Modified: 2/28/2012 9:59:14 AM

**Electropherogram Summary Continued ...**



**Overall Results for sample 3 : sample 3**

Number of peaks found: 13      Corr. Area 1: 302.0  
 Noise: 0.5

**Peak table for sample 3 : sample 3**

Peak	Size [bp]	Conc. [pg/μl]	Molarity [pmol/l]	Observations
1	33	0.00	0.0	
2	35	125.00	5,411.3	Lower Marker
3	271	32.41	181.3	
4	280	33.90	183.2	
5	295	39.76	204.3	
6	315	31.55	151.7	
7	324	37.86	177.2	
8	334	44.11	199.8	
9	342	38.18	169.2	
10	369	39.61	162.8	
11	396	25.89	99.0	
12	429	23.80	84.0	
13	501	32.08	97.0	
14	10,113	52.88	7.9	
15	10,380	75.00	10.9	Upper Marker

**Region table for sample 3 : sample 3**

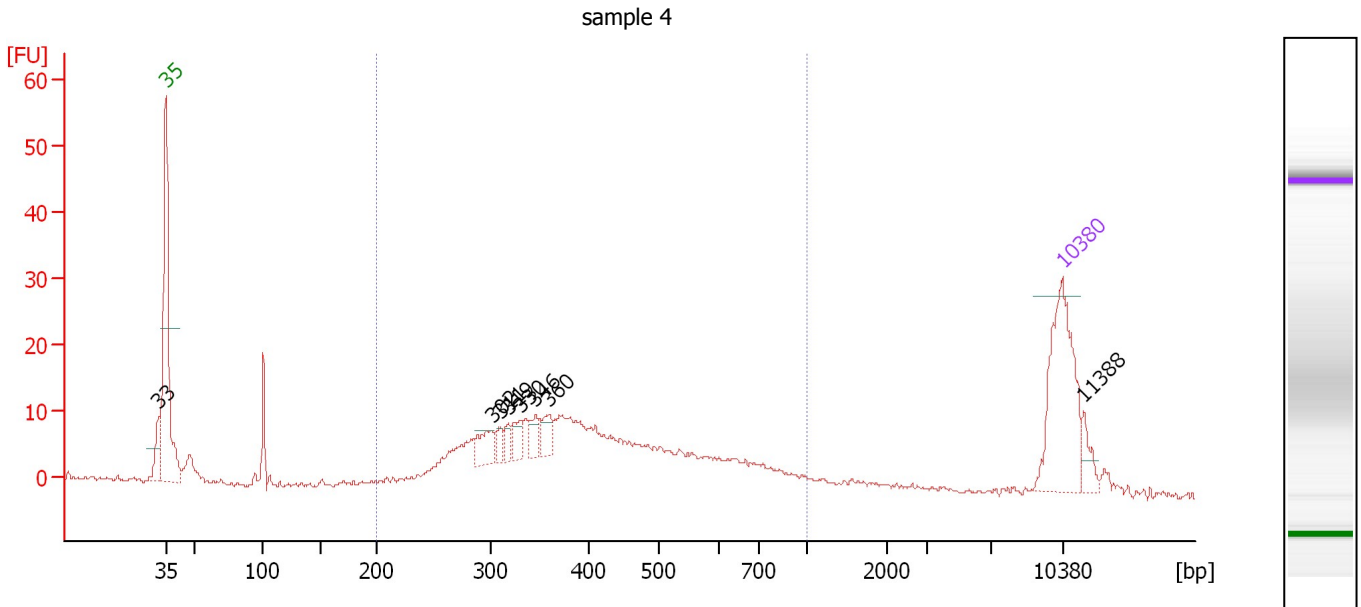
From [bp]	Molarity [pmol/l]	Average Size [bp]	Conc. [pg/μl]	To [bp]	Corr. Area	% of Total	Size distribution in CV [%]	Color
200	4,251.4	429	1,056.09	1,000	302.0	78	33.4	Blue



Assay Class: High Sensitivity DNA Assay  
 Data Path: C:\...nts and Settings\Bioanalyzer\2012-02-28\2012-02-28\_001B.xad

Created: 2/28/2012 9:27:41 AM  
 Modified: 2/28/2012 9:59:14 AM

**Electropherogram Summary Continued ...**



**Overall Results for sample 4 : sample 4**

Number of peaks found: 8                      Corr. Area 1: 264.2  
 Noise: 0.4

**Peak table for sample 4 : sample 4**

Peak	Size [bp]	Conc. [pg/μl]	Molarity [pmol/l]	Observations
1	33	0.00	0.0	
2	35	125.00	5,411.3	Lower Marker
3	302	22.02	110.5	
4	311	8.51	41.5	
5	319	8.88	42.2	
6	330	11.91	54.6	
7	346	12.68	55.6	
8	360	13.58	57.2	
9	10,380	75.00	10.9	Upper Marker
10	11,388	0.00	0.0	

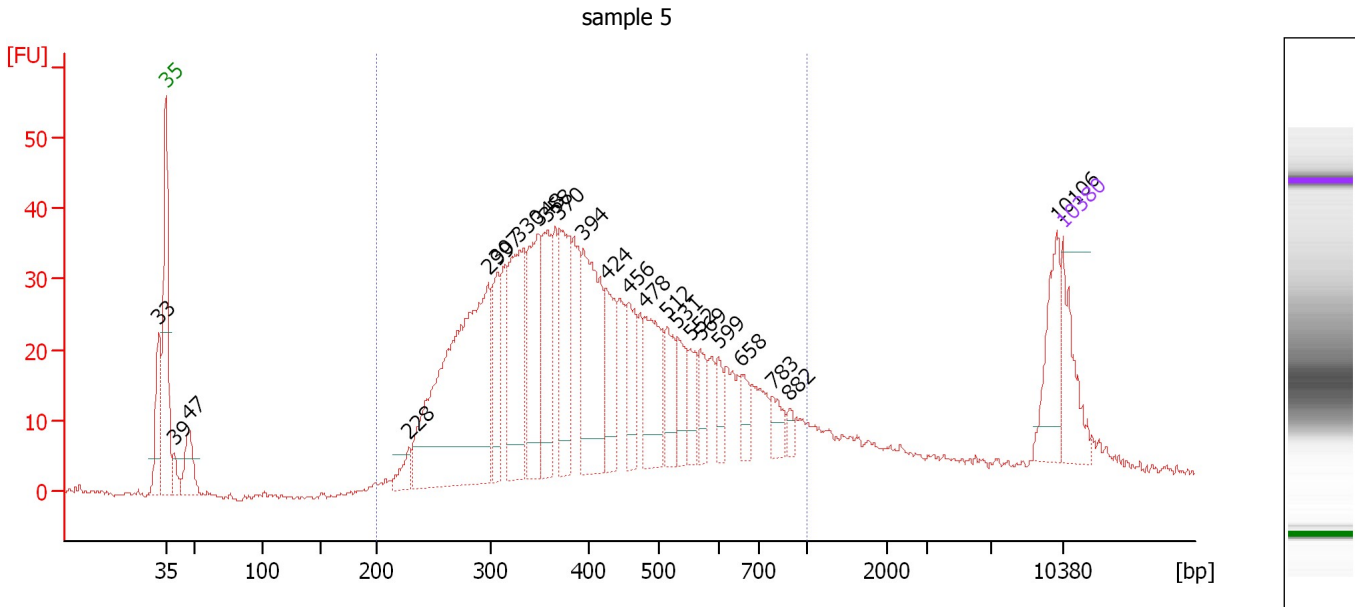
**Region table for sample 4 : sample 4**

From [bp]	Molarity [pmol/l]	Average Size [bp]	Conc. [pg/μl]	To [bp]	Corr. Area	% of Total	Size distribution in CV [%]	Color
200	1,857.1	432	462.49	1,000	264.2	81	34.0	Blue

Assay Class: High Sensitivity DNA Assay  
 Data Path: C:\...nts and Settings\Bioanalyzer\2012-02-28\2012-02-28\_001B.xad

Created: 2/28/2012 9:27:41 AM  
 Modified: 2/28/2012 9:59:14 AM

**Electropherogram Summary Continued ...**



**Overall Results for sample 5 : sample 5**

Number of peaks found: 23                      Corr. Area 1: 947.0  
 Noise: 0.4

**Peak table for sample 5 : sample 5**

Peak	Size [bp]	Conc. [pg/μl]	Molarity [pmol/l]	Observations
1	33	0.00	0.0	
2	35	125.00	5,411.3	Lower Marker
3	39	31.58	1,221.7	
4	47	81.45	2,631.0	
5	228	35.50	235.6	
6	299	674.79	3,424.7	
7	307	103.11	508.7	
8	330	229.94	1,056.4	
9	348	177.53	772.0	
10	358	140.36	594.5	
11	370	158.11	647.5	
12	394	235.96	907.8	
13	424	105.88	378.3	
14	456	85.35	283.6	
15	478	127.56	404.3	
16	512	66.55	197.0	
17	531	56.54	161.4	
18	552	48.08	131.9	
19	569	44.85	119.4	
20	599	32.14	81.2	
21	658	35.81	82.5	
22	783	32.32	62.5	
23	882	12.86	22.1	
24	10,106	83.52	12.5	
25	10,380	75.00	10.9	Upper Marker


Assay Class: High Sensitivity DNA Assay  
Data Path: C:\...nts and Settings\Bioanalyzer\2012-02-28\2012-02-28\_001B.xad

Created: 2/28/2012 9:27:41 AM  
Modified: 2/28/2012 9:59:14 AM

**Electropherogram Summary Continued ...**

... Region table for sample 5 :

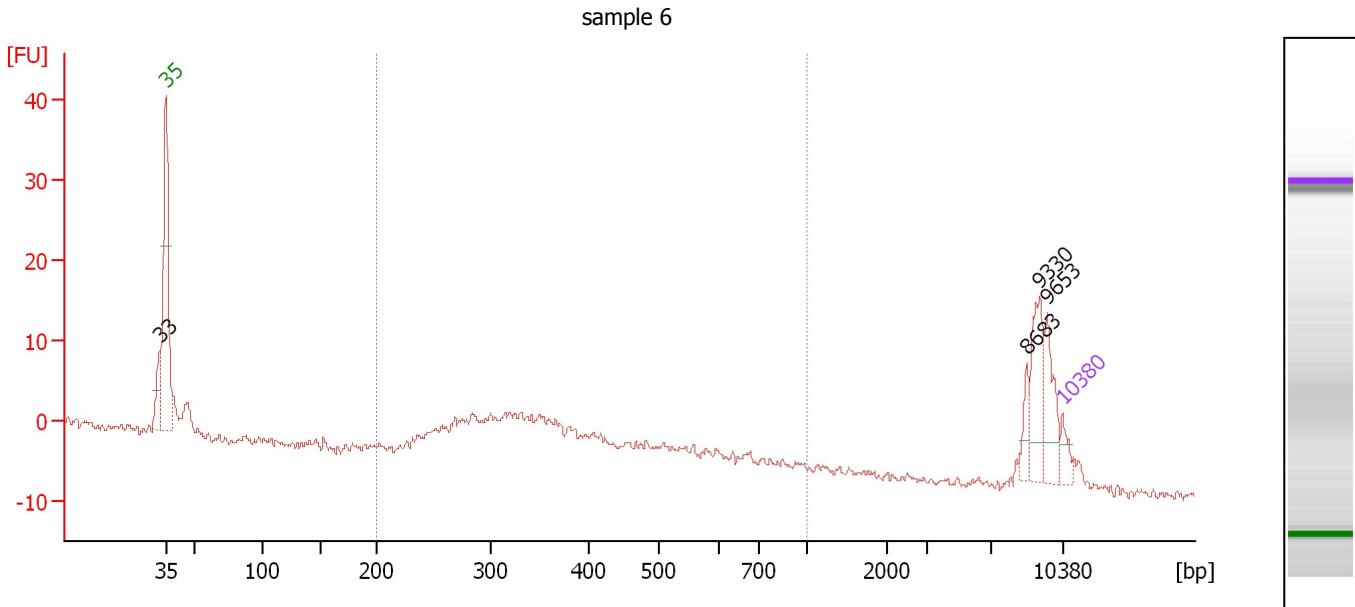
sample 5

From [bp]	Molarity [pmol/l]	Average Size [bp]	Conc. [pg/ $\mu$ l]	To [bp]	Corr. Area	% of Total	Size distribution in CV [%]	Co lor
200	13,217.1	428	3,245.61	1,000	947.0	87	34.5	

Assay Class: High Sensitivity DNA Assay  
 Data Path: C:\...nts and Settings\Bioanalyzer\2012-02-28\2012-02-28\_001B.xad

Created: 2/28/2012 9:27:41 AM  
 Modified: 2/28/2012 9:59:14 AM

**Electropherogram Summary Continued ...**



**Overall Results for sample 6 : sample 6**

Number of peaks found: 4                      Corr. Area 1: 100.8  
 Noise: 0.4

**Peak table for sample 6 : sample 6**

Peak	Size [bp]	Conc. [pg/μl]	Molarity [pmol/l]	Observations
1	33	0.00	0.0	
2	35	125.00	5,411.3	Lower Marker
3	8,683	98.57	17.2	
4	9,330	304.19	49.4	
5	9,653	231.19	36.3	
6	10,380	75.00	10.9	Upper Marker

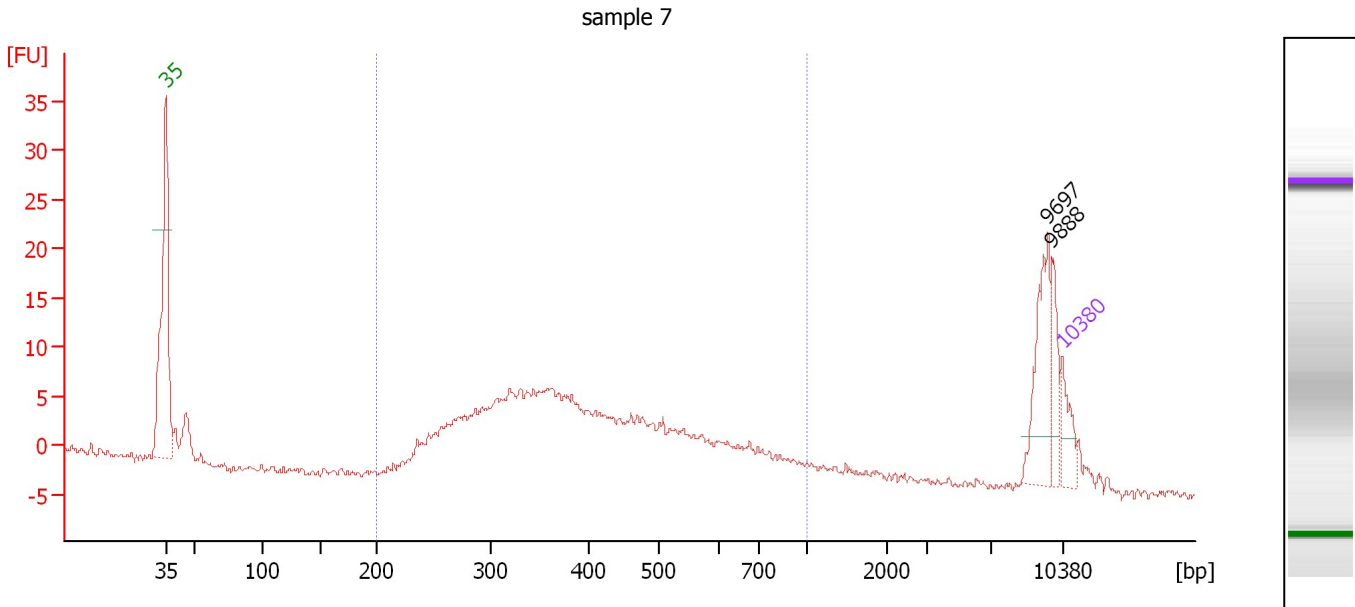
**Region table for sample 6 : sample 6**

From [bp]	Molarity [pmol/l]	Average Size [bp]	Conc. [pg/μl]	To [bp]	Corr. Area	% of Total	Size distribution in CV [%]	Color
200	9,007.6	393	2,069.73	1,000	100.8	57	33.4	Blue

Assay Class: High Sensitivity DNA Assay  
 Data Path: C:\...nts and Settings\Bioanalyzer\2012-02-28\2012-02-28\_001B.xad

Created: 2/28/2012 9:27:41 AM  
 Modified: 2/28/2012 9:59:14 AM

**Electropherogram Summary Continued ...**



**Overall Results for sample 7 : sample 7**

Number of peaks found: 2      Corr. Area 1: 194.6  
 Noise: 0.4

**Peak table for sample 7 : sample 7**

Peak	Size [bp]	Conc. [pg/μl]	Molarity [pmol/l]	Observations
1	35	125.00	5,411.3	Lower Marker
2	9,697	229.22	35.8	
3	9,888	83.25	12.8	
4	10,380	75.00	10.9	Upper Marker

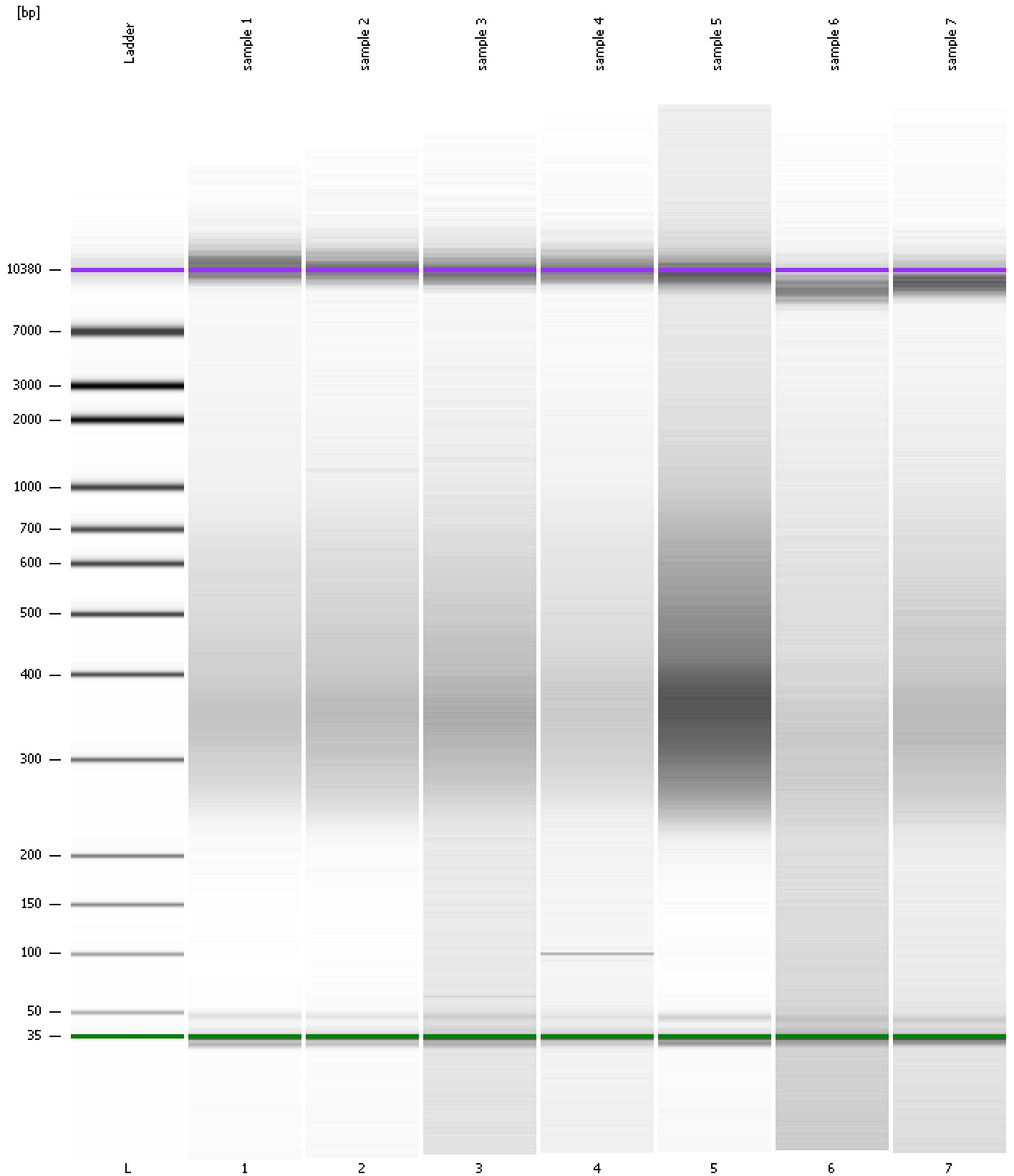
**Region table for sample 7 : sample 7**

From [bp]	Molarity [pmol/l]	Average Size [bp]	Conc. [pg/μl]	To [bp]	Corr. Area	% of Total	Size distribution in CV [%]	Color
200	8,843.2	426	2,175.70	1,000	194.6	76	33.9	Blue

Assay Class: High Sensitivity DNA Assay  
Data Path: C:\...nts and Settings\Bioanalyzer\2012-02-28\2012-02-28\_001B.xad

Created: 2/28/2012 9:27:41 AM  
Modified: 2/28/2012 9:59:14 AM

**Gel Image**

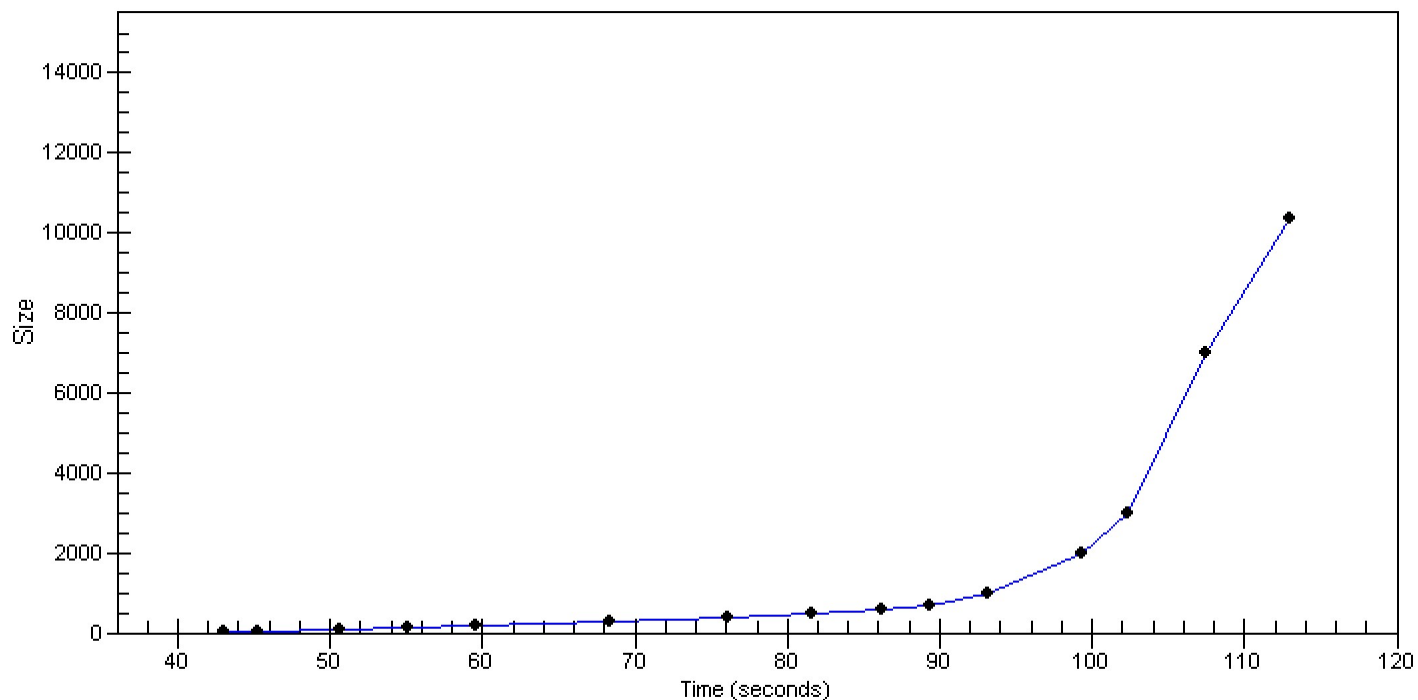


Assay Class: High Sensitivity DNA Assay  
Data Path: C:\...nts and Settings\Bioanalyzer\2012-02-28\2012-02-28\_001B.xad

Created: 2/28/2012 9:27:41 AM  
Modified: 2/28/2012 9:59:14 AM

### Curves

#### Standard Curve



Assay Class: High Sensitivity DNA Assay  
 Data Path: C:\...nts and Settings\Bioanalyzer\2012-02-28\2012-02-28\_001B.xad

Created: 2/28/2012 9:27:41 AM  
 Modified: 2/28/2012 9:59:14 AM

**Run Logbook**

Description	Number	Source	Category	Sub Category	Time	Time Zone	User	Host
Run aborted on port 1		Instrument	Run		2/28/2012 9:58:22 AM	(GMT --08:00) Pacific Standard Time	UC Davis	D8XSMGH1
Run started on port 1 (File: C:\Documents and Settings\Bioanalyzer\2012-02-28\2012-02-28_001.xad)		Instrument	Run		2/28/2012 9:27:46 AM	(GMT --08:00) Pacific Standard Time	UC Davis	D8XSMGH1
Product Number : G2938B		Instrument	Run		2/28/2012 9:27:46 AM	(GMT --08:00) Pacific Standard Time	UC Davis	D8XSMGH1
Name :		Instrument	Run		2/28/2012 9:27:46 AM	(GMT --08:00) Pacific Standard Time	UC Davis	D8XSMGH1
Vendor : Agilent Technologies		Instrument	Run		2/28/2012 9:27:46 AM	(GMT --08:00) Pacific Standard Time	UC Davis	D8XSMGH1
Serial# : DE13701086		Instrument	Run		2/28/2012 9:27:46 AM	(GMT --08:00) Pacific Standard Time	UC Davis	D8XSMGH1
Firmware : C.01.069		Instrument	Run		2/28/2012 9:27:46 AM	(GMT --08:00) Pacific Standard Time	UC Davis	D8XSMGH1
Cartridge : Electrode		Instrument	Run		2/28/2012 9:27:46 AM	(GMT --08:00) Pacific Standard Time	UC Davis	D8XSMGH1