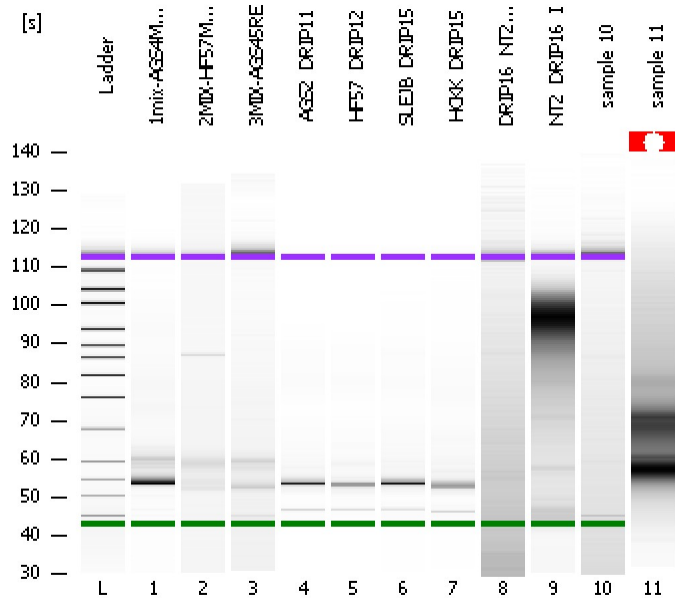


Assay Class: High Sensitivity DNA Assay  
Data Path: C:\...ents and Settings\Bioanalyzer\2012-02-28\2012-02-28\_005.xad

Created: 2/28/2012 2:47:17 PM  
Modified: 2/28/2012 3:26:15 PM

### Electrophoresis File Run Summary



#### Instrument Information:

Instrument Name: DE13701086      Firmware: C.01.069  
Serial#: DE13701086      Type: G2938B

#### Assay Information:

Assay Origin Path: C:\Program Files\Agilent\2100 bioanalyzer\2100 expert\assays\dsDNA\High Sensitivity DNA.xsy  
Assay Class: High Sensitivity DNA Assay  
Version: 1.03  
Assay Comments: Copyright © 2003-2010 Agilent Technologies

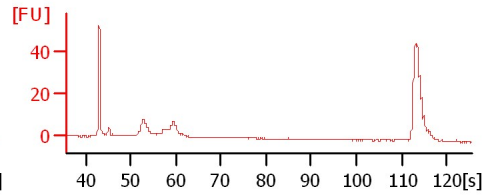
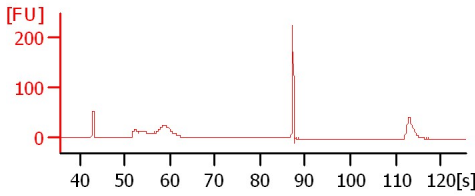
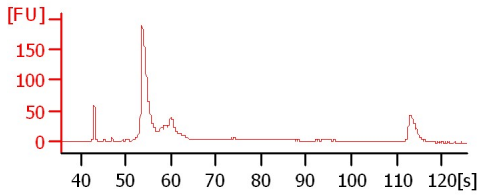
#### Chip Information:

Chip Lot #:   
Reagent Kit Lot #:   
Chip Comments:

1mix-AGS4MRC

2MIX-HF57MRC

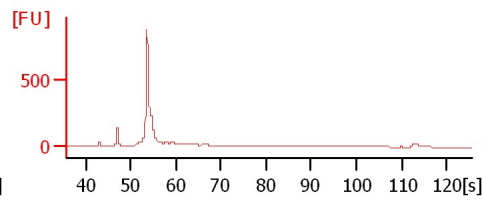
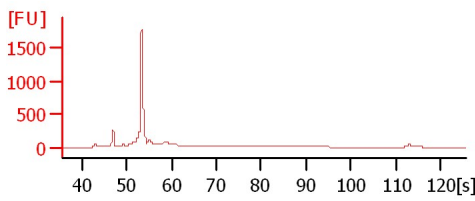
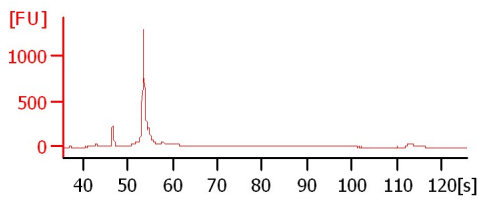
3MIX-AGS45RE



AGS2\_DRIP11

HF57\_DRIP12

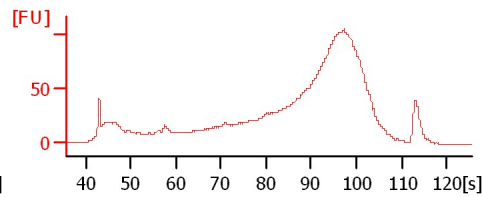
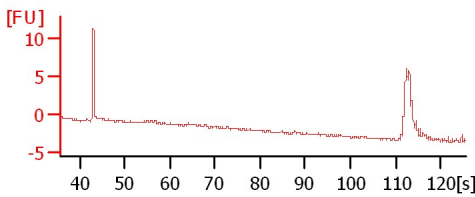
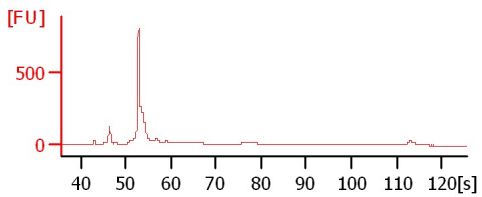
SLEJB\_DRIP15



HCKK\_DRIP15

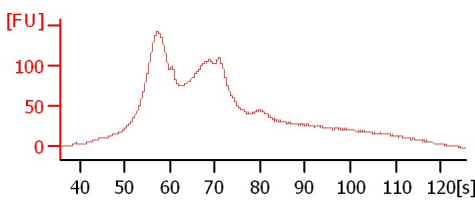
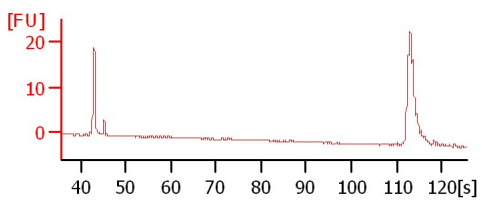
DRIP16\_NT2 E1

NT2\_DRIP16\_I



sample 10

sample 11



Assay Class: High Sensitivity DNA Assay  
 Data Path: C:\...ents and Settings\Bioanalyzer\2012-02-28\2012-02-28\_005.xad

Created: 2/28/2012 2:47:17 PM  
 Modified: 2/28/2012 3:26:15 PM

**Electrophoresis File Run Summary (Chip Summary)**

Sample Name	Sample Comment	Rest. Digest	Status	Observation	Result Label	Result Color
1mix-AGS4MRC		<input type="checkbox"/>	✓			
2MIX-HF57MRC		<input type="checkbox"/>	✓			
3MIX-AGS45RE		<input type="checkbox"/>	✓			
AGS2_DRIP11		<input type="checkbox"/>	✓			
HF57_DRIP12		<input type="checkbox"/>	✓			
SLEJB_DRIP15		<input type="checkbox"/>	✓			
HCKK_DRIP15		<input type="checkbox"/>	✓			
DRIP16_NT2 E1		<input type="checkbox"/>	✓			
NT2_DRIP16_I		<input type="checkbox"/>	✓			
sample 10		<input type="checkbox"/>	✓			
sample 11		<input type="checkbox"/>	✓			
Ladder		<input type="checkbox"/>	✓			

**Chip Lot #**

**Reagent Kit Lot #**

**Chip Comments :**

Assay Class: High Sensitivity DNA Assay  
 Data Path: C:\...ents and Settings\Bioanalyzer\2012-02-28\2012-02-28\_005.xad

Created: 2/28/2012 2:47:17 PM  
 Modified: 2/28/2012 3:26:15 PM

**Electrophoresis Assay Details**

**General Analysis Settings**

Number of Available Sample and Ladder Wells (Max.) : 12  
 Minimum Visible Range [s] : 32  
 Maximum Visible Range [s] : 138  
 Start Analysis Time Range [s] : 33  
 End Analysis Time Range [s] : 137.5  
 Ladder Concentration [pg/μl] : 1950  
 Uses Standard Area for Ladder Fragments  
 Lower Marker Concentration [pg/μl] : 125  
 Upper Marker Concentration [pg/μl] : 75  
 Used Upper Marker for Quantitation  
 Standard Curve Fit is Point to Point  
 Show Data Aligned to Lower and Upper Marker

**Integrator Settings**

Integration Start Time [s] : 33.05  
 Integration End Time [s] : 137  
 Slope Threshold : 0.8  
 Height Threshold [FU] : 5  
 Area Threshold : 0.1  
 Width Threshold [s] : 0.6  
 Baseline Plateau [s] : 0.5

**Filter Settings**

Filter Width [s] : 0.5  
 Polynomial Order : 4

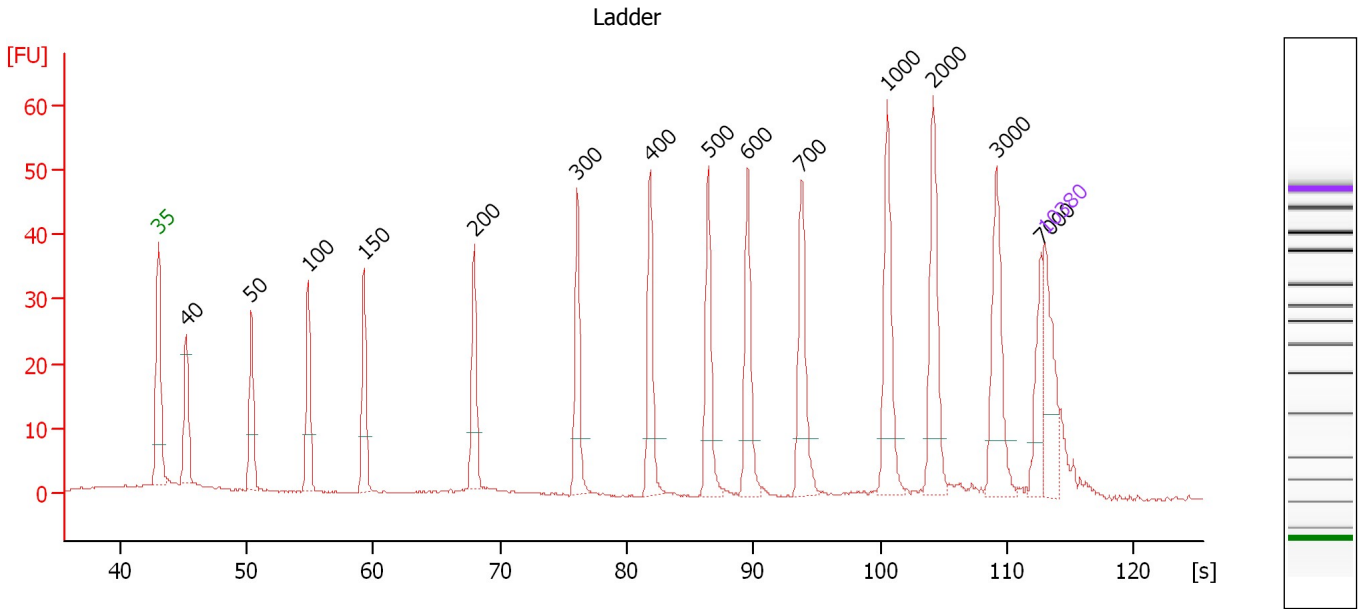
**Ladder**

Ladder Peak	Size	Area
1	35	160
2	50	210
3	100	208
4	150	221
5	200	242
6	300	270
7	400	305
8	500	306
9	600	336
10	700	321
11	1000	366
12	2000	413
13	3000	411
14	7000	400
15	10380	214

Assay Class: High Sensitivity DNA Assay  
 Data Path: C:\...ents and Settings\Bioanalyzer\2012-02-28\2012-02-28\_005.xad

Created: 2/28/2012 2:47:17 PM  
 Modified: 2/28/2012 3:26:15 PM

**Electropherogram Summary**



**Overall Results for Ladder**

Noise: 0.2

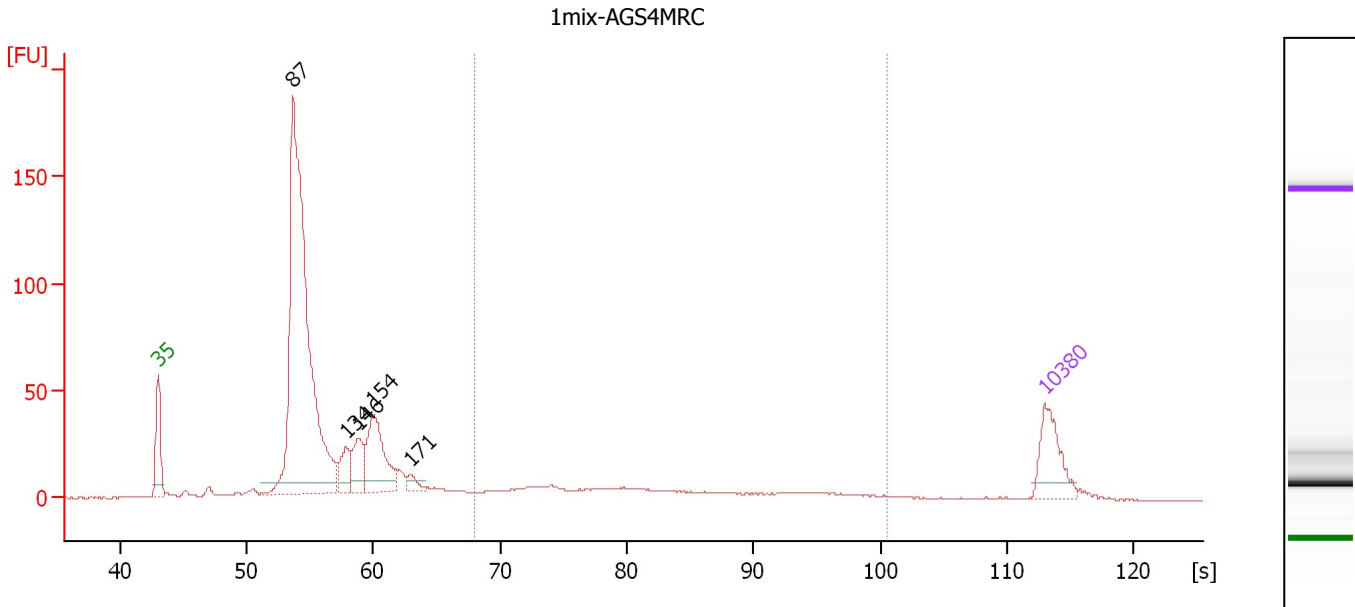
**Peak table for Ladder**

Peak	Size [bp]	Conc. [pg/μl]	Molarity [pmol/l]	Observations
1	35	125.00	5,411.3	Lower Marker
2	40	0.00	0.0	
3	50	150.00	4,545.5	Ladder Peak
4	100	150.00	2,272.7	Ladder Peak
5	150	150.00	1,515.2	Ladder Peak
6	200	150.00	1,136.4	Ladder Peak
7	300	150.00	757.6	Ladder Peak
8	400	150.00	568.2	Ladder Peak
9	500	150.00	454.5	Ladder Peak
10	600	150.00	378.8	Ladder Peak
11	700	150.00	324.7	Ladder Peak
12	1,000	150.00	227.3	Ladder Peak
13	2,000	150.00	113.6	Ladder Peak
14	3,000	150.00	75.8	Ladder Peak
15	7,000	150.00	32.5	Ladder Peak
16	10,380	75.00	10.9	Upper Marker

Assay Class: High Sensitivity DNA Assay  
 Data Path: C:\...ents and Settings\Bioanalyzer\2012-02-28\2012-02-28\_005.xad

Created: 2/28/2012 2:47:17 PM  
 Modified: 2/28/2012 3:26:15 PM

**Electropherogram Summary Continued ...**



**Overall Results for sample 1 : 1mix-AGS4MRC**

Number of peaks found: 5                      Corr. Area 1: 144.9  
 Noise: 0.2

**Peak table for sample 1 : 1mix-AGS4MRC**

Peak	Size [bp]	Conc. [pg/µl]	Molarity [pmol/l]	Observations
1	35	125.00	5,411.3	Lower Marker
2	87	1,205.32	21,018.1	
3	134	68.15	770.8	
4	146	86.50	899.9	
5	154	188.02	1,846.8	
6	171	23.31	206.5	
7	10,380	75.00	10.9	Upper Marker

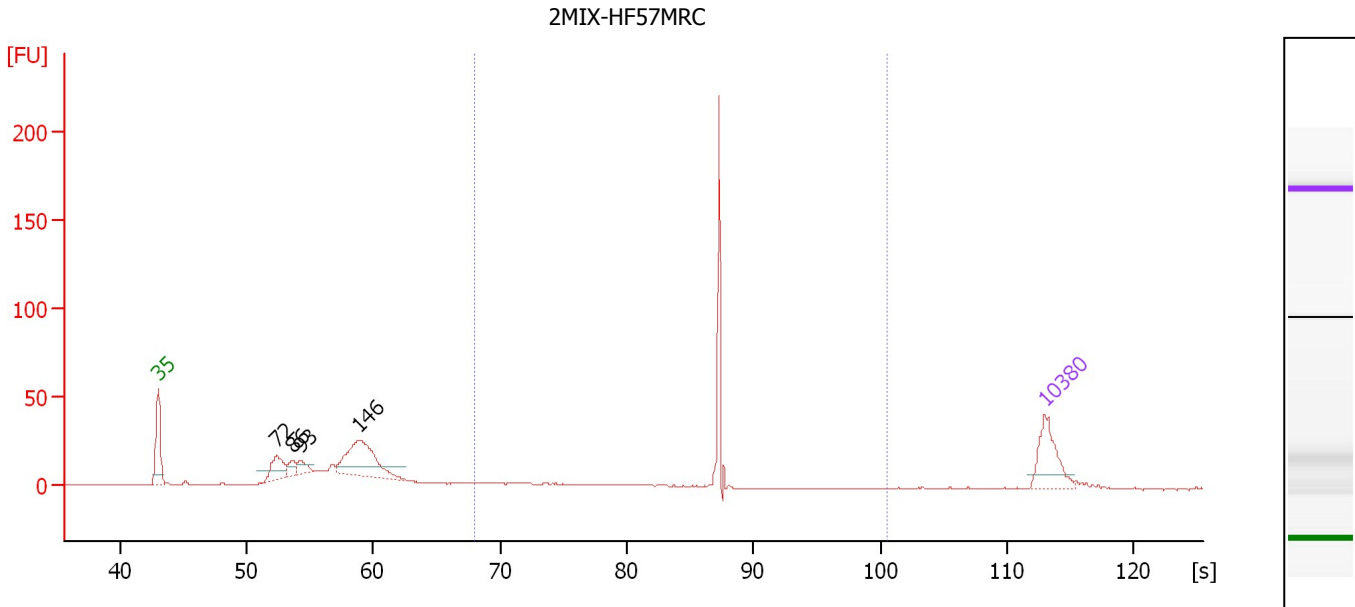
**Region table for sample 1 : 1mix-AGS4MRC**

From [s]	Molarity [pmol/l]	Average Size [bp]	Conc. [pg/µl]	To [s]	Corr. Area	% of Total	Size distribution in CV [%]	Color
67.96	982.0	448	226.42	100.56	144.9	14	45.3	Blue

Assay Class: High Sensitivity DNA Assay  
 Data Path: C:\...ents and Settings\Bioanalyzer\2012-02-28\2012-02-28\_005.xad

Created: 2/28/2012 2:47:17 PM  
 Modified: 2/28/2012 3:26:15 PM

**Electropherogram Summary Continued ...**



**Overall Results for sample 2 : 2MIX-HF57MRC**

Number of peaks found: 4                      Corr. Area 1: 92.6  
 Noise: 0.2

**Peak table for sample 2 : 2MIX-HF57MRC**

Peak	Size [bp]	Conc. [pg/μl]	Molarity [pmol/l]	Observations
1	35	125.00	5,411.3	Lower Marker
2	72	75.61	1,581.4	
3	86	26.66	470.9	
4	93	29.71	482.6	
5	146	212.96	2,216.3	
6	10,380	75.00	10.9	Upper Marker

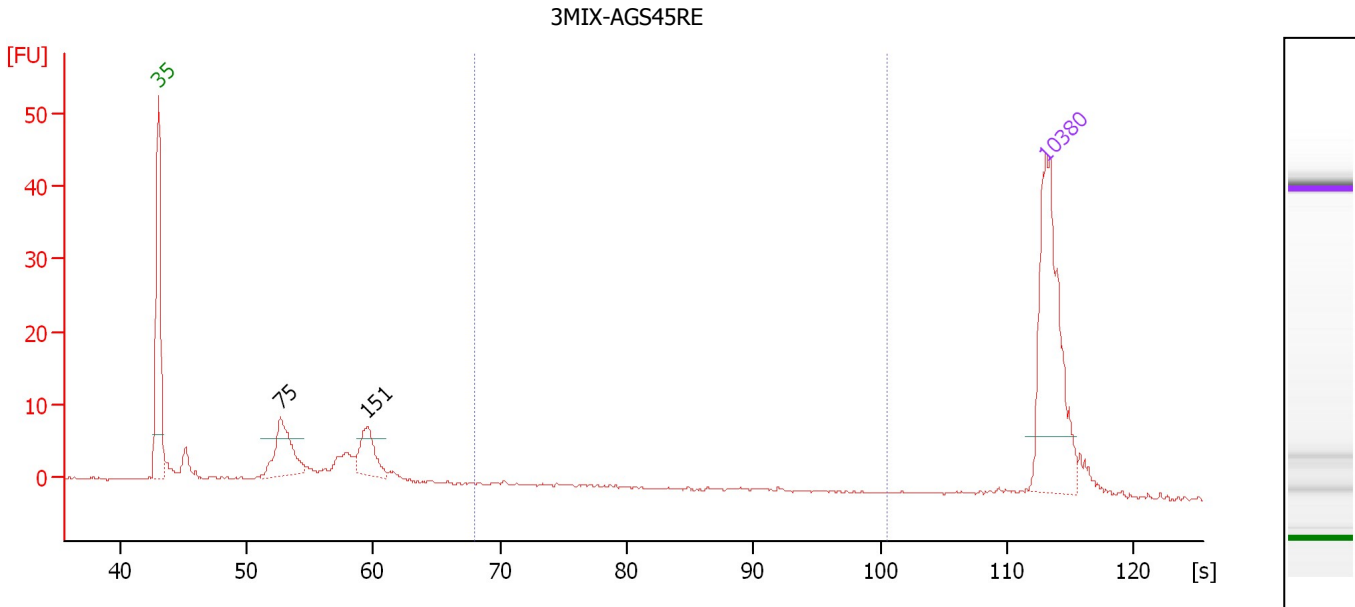
**Region table for sample 2 : 2MIX-HF57MRC**

From [s]	Molarity [pmol/l]	Average Size [bp]	Conc. [pg/μl]	To [s]	Corr. Area	% of Total	Size distribution in CV [%]	Color
67.96	629.1	460	165.79	100.56	92.6	24	24.1	Blue

Assay Class: High Sensitivity DNA Assay  
 Data Path: C:\...ents and Settings\Bioanalyzer\2012-02-28\2012-02-28\_005.xad

Created: 2/28/2012 2:47:17 PM  
 Modified: 2/28/2012 3:26:15 PM

**Electropherogram Summary Continued ...**



**Overall Results for sample 3 : 3MIX-AGS45RE**

Number of peaks found: 2                      Corr. Area 1: 0.1  
 Noise: 0.2

**Peak table for sample 3 : 3MIX-AGS45RE**

Peak	Size [bp]	Conc. [pg/μl]	Molarity [pmol/l]	Observations
1	35	125.00	5,411.3	Lower Marker
2	75	44.52	894.7	
3	151	28.51	285.5	
4	10,380	75.00	10.9	Upper Marker

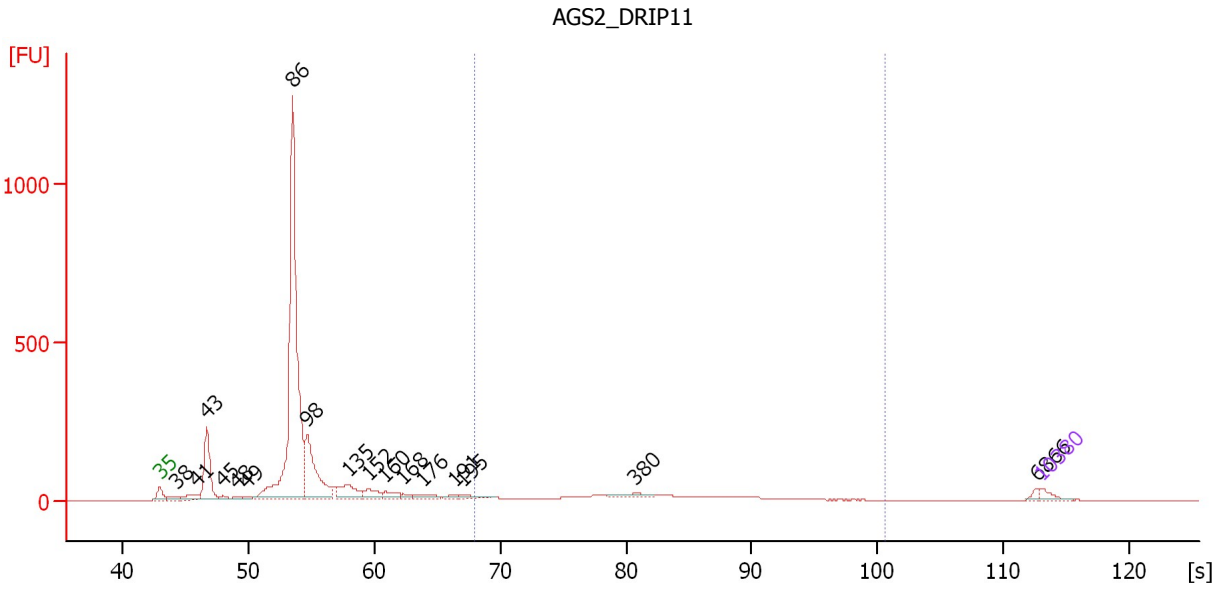
**Region table for sample 3 : 3MIX-AGS45RE**

From [s]	Molarity [pmol/l]	Average Size [bp]	Conc. [pg/μl]	To [s]	Corr. Area	% of Total	Size distribution in CV [%]	Color
67.96	0.9	230	0.14	100.56	0.1	0	2.9	Blue

Assay Class: High Sensitivity DNA Assay  
 Data Path: C:\...ents and Settings\Bioanalyzer\2012-02-28\2012-02-28\_005.xad

Created: 2/28/2012 2:47:17 PM  
 Modified: 2/28/2012 3:26:15 PM

**Electropherogram Summary Continued ...**



**Overall Results for sample 4 : AGS2\_DRIP11**

Number of peaks found: 17                      Corr. Area 1: 420.2  
 Noise: 0.2

**Peak table for sample 4 : AGS2\_DRIP11**

Peak	Size [bp]	Conc. [pg/μl]	Molarity [pmol/l]	Observations
1	35	125.00	5,411.3	Lower Marker
2	38	119.47	4,809.7	
3	41	180.66	6,678.8	
4	43	1,129.54	40,168.5	
5	45	66.98	2,248.2	
6	48	53.83	1,714.2	
7	49	37.19	1,145.4	
8	86	6,542.12	115,718.4	
9	98	1,547.24	23,810.8	
10	135	477.11	5,355.4	
11	152	231.06	2,306.3	
12	160	151.20	1,436.2	
13	168	60.79	549.9	
14	176	122.03	1,048.4	
15	191	45.48	361.5	
16	195	66.51	517.7	
17	380	93.97	374.3	
18	6,866	43.13	9.5	
19	10,380	75.00	10.9	Upper Marker

**Region table for sample 4 : AGS2\_DRIP11**

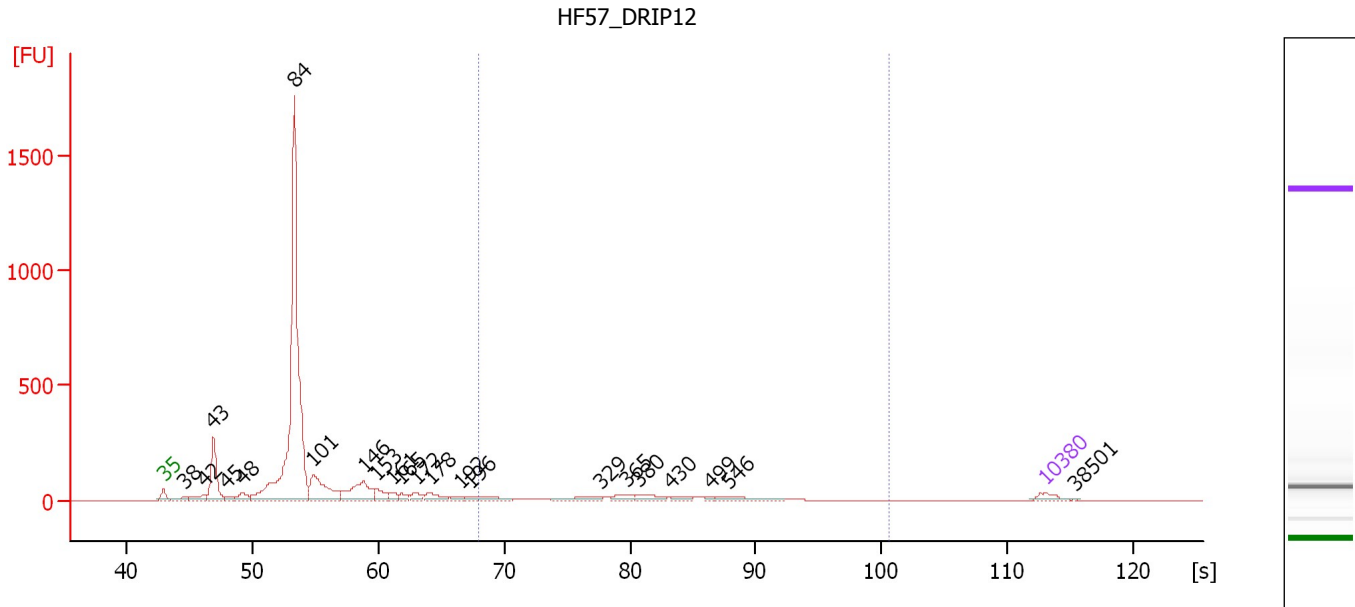
From [s]	Molarity [pmol/l]	Average Size [bp]	Conc. [pg/μl]	To [s]	Corr. Area	% of Total	Size distribution in CV [%]	Color
67.96	5,048.7	435	1,204.92	100.56	420.2	12	38.3	■



Assay Class: High Sensitivity DNA Assay  
 Data Path: C:\...ents and Settings\Bioanalyzer\2012-02-28\2012-02-28\_005.xad

Created: 2/28/2012 2:47:17 PM  
 Modified: 2/28/2012 3:26:15 PM

**Electropherogram Summary Continued ...**



**Overall Results for sample 5 : HF57 DRIP12**

Number of peaks found: 22                      Corr. Area 1: 472.8  
 Noise: 0.2

**Peak table for sample 5 : HF57 DRIP12**

Peak	Size [bp]	Conc. [pg/μl]	Molarity [pmol/l]	Observations
1	35	125.00	5,411.3	Lower Marker
2	38	96.60	3,822.0	
3	42	169.28	6,166.5	
4	43	898.20	31,622.5	
5	45	82.09	2,745.5	
6	48	166.49	5,291.4	
7	84	6,448.88	116,912.0	
8	101	877.98	13,231.6	
9	146	660.58	6,871.3	
10	153	214.07	2,115.6	
11	161	100.84	949.9	
12	165	99.34	912.7	
13	172	121.21	1,070.3	
14	178	181.40	1,544.3	
15	192	75.40	595.3	
16	196	192.59	1,486.9	
17	329	129.09	595.1	
18	365	106.00	440.6	
19	380	123.06	490.3	
20	430	54.25	191.1	
21	499	20.87	63.3	
22	546	103.27	286.3	
23	10,380	75.00	10.9	Upper Marker
24	38,501	0.00	0.0	


Assay Class: High Sensitivity DNA Assay  
Data Path: C:\...ents and Settings\Bioanalyzer\2012-02-28\2012-02-28\_005.xad

Created: 2/28/2012 2:47:17 PM  
Modified: 2/28/2012 3:26:15 PM

**Electropherogram Summary Continued ...**

... Region table for sample 5 :

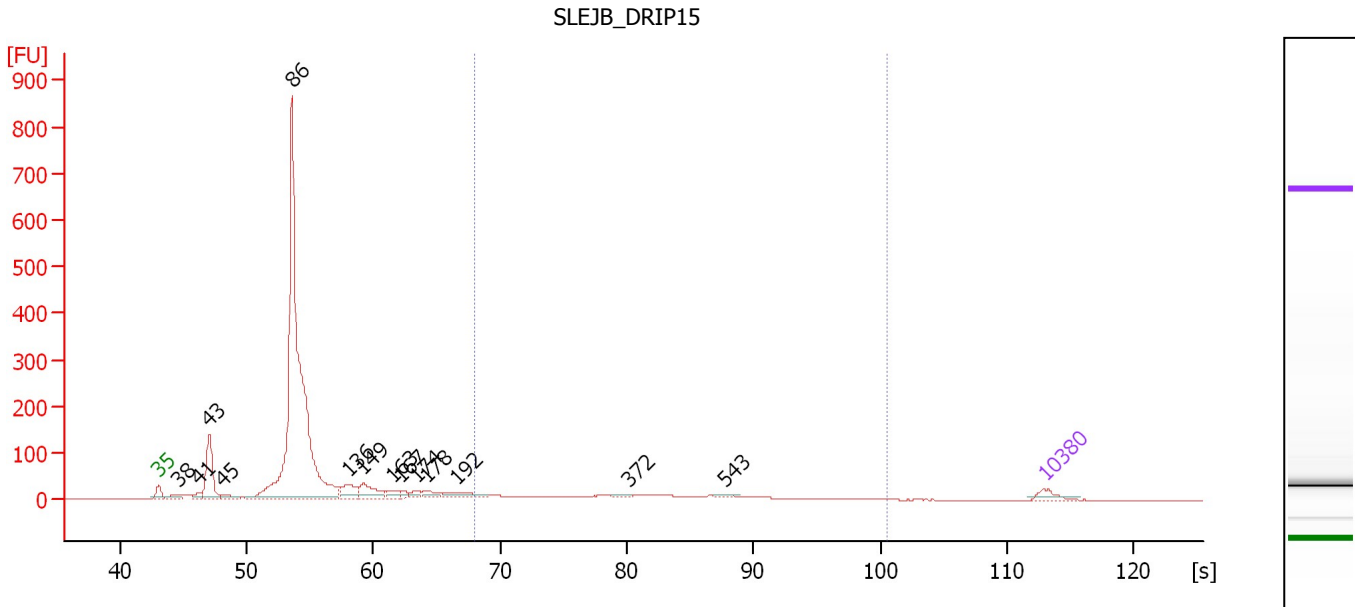
**HF57\_DRIP12**

<b>From [s]</b>	<b>Molarity [pmol/l]</b>	<b>Average Size [bp]</b>	<b>Conc. [pg/<math>\mu</math>l]</b>	<b>To [s]</b>	<b>Corr. Area</b>	<b>% of Total</b>	<b>Size distribution in CV [%]</b>	<b>Co lor</b>
67.96	4,187.3	417	970.53	100.56	472.8	11	37.1	

Assay Class: High Sensitivity DNA Assay  
 Data Path: C:\...ents and Settings\Bioanalyzer\2012-02-28\2012-02-28\_005.xad

Created: 2/28/2012 2:47:17 PM  
 Modified: 2/28/2012 3:26:15 PM

**Electropherogram Summary Continued ...**



**Overall Results for sample 6 : SLEJB DRIP15**

Number of peaks found: 14      Corr. Area 1: 291.4  
 Noise: 0.2

**Peak table for sample 6 : SLEJB DRIP15**

Peak	Size [bp]	Conc. [pg/μl]	Molarity [pmol/l]	Observations
1	35	125.00	5,411.3	Lower Marker
2	38	107.15	4,237.1	
3	41	69.31	2,535.1	
4	43	675.87	23,712.4	
5	45	78.52	2,622.5	
6	86	6,267.47	110,478.9	
7	136	245.12	2,723.6	
8	149	300.52	3,056.0	
9	163	90.61	844.2	
10	167	56.18	510.6	
11	174	70.29	612.0	
12	178	91.69	778.8	
13	192	163.57	1,290.1	
14	372	29.35	119.6	
15	543	23.96	66.8	
16	10,380	75.00	10.9	Upper Marker

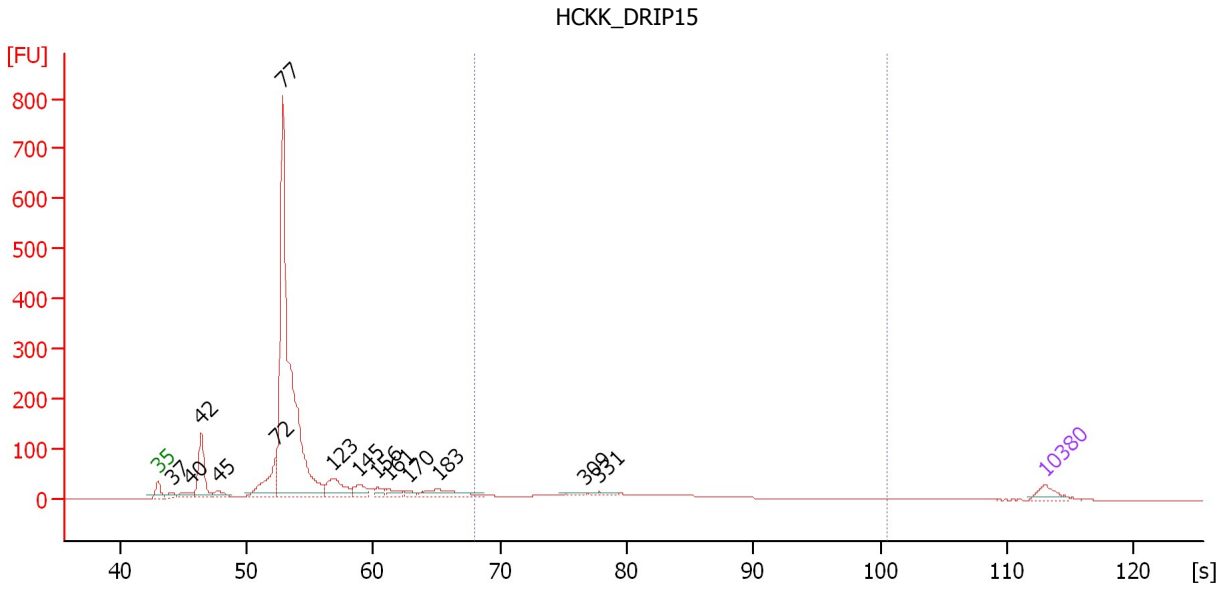
**Region table for sample 6 : SLEJB DRIP15**

From [s]	Molarity [pmol/l]	Average Size [bp]	Conc. [pg/μl]	To [s]	Corr. Area	% of Total	Size distribution in CV [%]	Color
67.96	3,692.0	427	845.47	100.56	291.4	12	40.1	Blue

Assay Class: High Sensitivity DNA Assay  
 Data Path: C:\...ents and Settings\Bioanalyzer\2012-02-28\2012-02-28\_005.xad

Created: 2/28/2012 2:47:17 PM  
 Modified: 2/28/2012 3:26:15 PM

**Electropherogram Summary Continued ...**



**Overall Results for sample 7 : HCKK\_DRIP15**

Number of peaks found: 14      Corr. Area 1: 305.4  
 Noise: 0.1

**Peak table for sample 7 : HCKK\_DRIP15**

Peak	Size [bp]	Conc. [pg/μl]	Molarity [pmol/l]	Observations
1	35	125.00	5,411.3	Lower Marker
2	37	64.64	2,636.4	
3	40	98.66	3,721.2	
4	42	568.29	20,535.4	
5	45	75.81	2,577.5	
6	72	491.24	10,320.5	
7	77	4,482.13	87,657.1	
8	123	341.31	4,215.2	
9	145	146.01	1,521.4	
10	156	73.91	718.3	
11	161	80.65	759.6	
12	170	46.71	416.5	
13	183	206.22	1,703.7	
14	309	34.07	166.8	
15	331	39.39	180.3	
16	10,380	75.00	10.9	Upper Marker

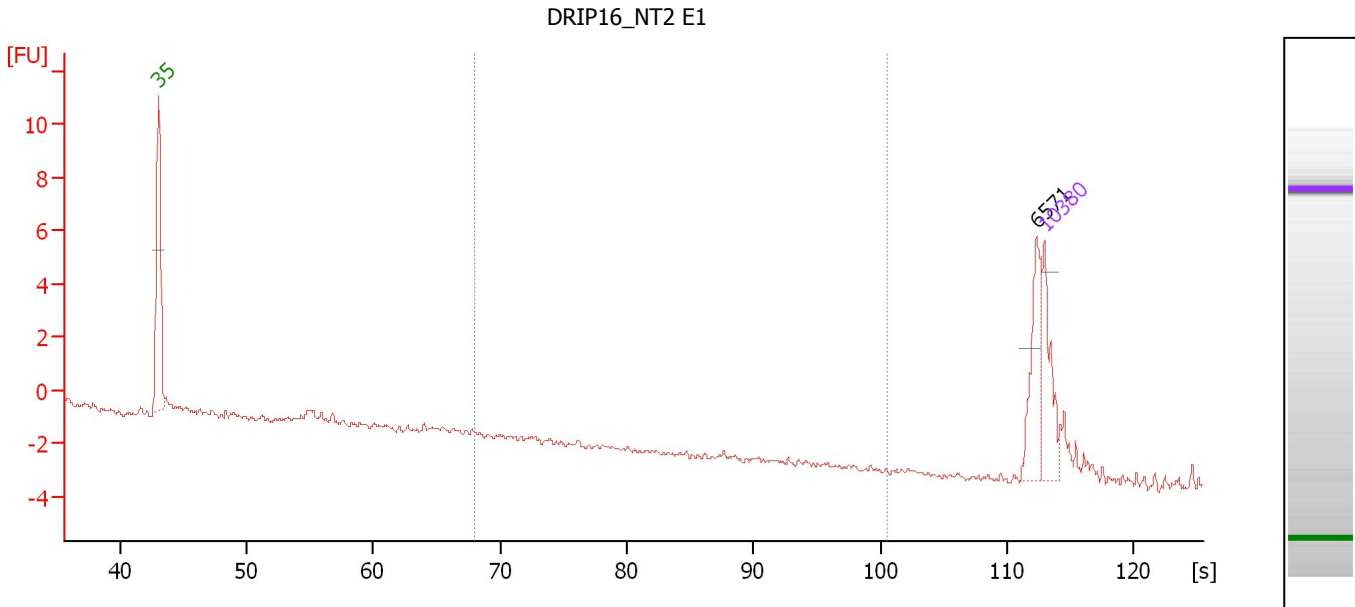
**Region table for sample 7 : HCKK\_DRIP15**

From [s]	Molarity [pmol/l]	Average Size [bp]	Conc. [pg/μl]	To [s]	Corr. Area	% of Total	Size distribution in CV [%]	Color
67.96	3,543.3	405	791.77	100.56	305.4	12	41.2	Blue

Assay Class: High Sensitivity DNA Assay  
 Data Path: C:\...ents and Settings\Bioanalyzer\2012-02-28\2012-02-28\_005.xad

Created: 2/28/2012 2:47:17 PM  
 Modified: 2/28/2012 3:26:15 PM

**Electropherogram Summary Continued ...**



**Overall Results for sample 8 : DRIP16\_NT2 E1**

Number of peaks found: 1                      Corr. Area 1: 0.0  
 Noise: 0.1

**Peak table for sample 8 : DRIP16\_NT2 E1**

Peak	Size [bp]	Conc. [pg/μl]	Molarity [pmol/l]	Observations
1	35	125.00	5,411.3	Lower Marker
2	6,571	91.88	21.2	
3	10,380	75.00	10.9	Upper Marker

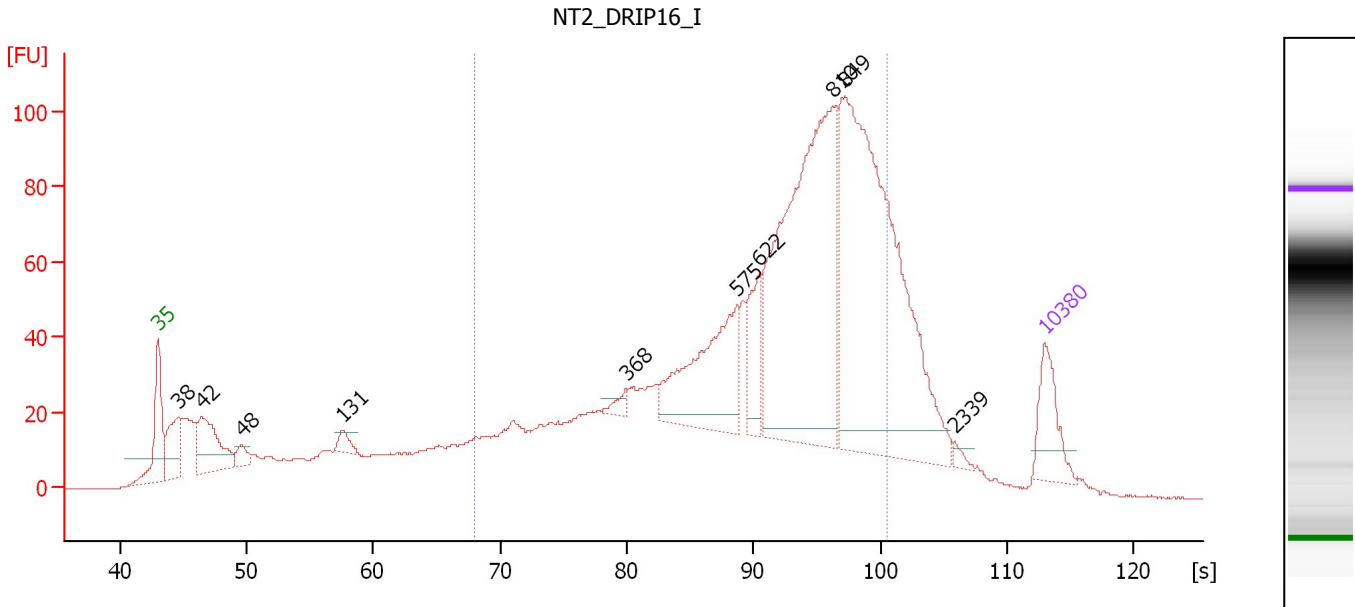
**Region table for sample 8 : DRIP16\_NT2 E1**

From [s]	Molarity [pmol/l]	Average Size [bp]	Conc. [pg/μl]	To [s]	Corr. Area	% of Total	Size distribution in CV [%]	Color
67.96	0.0	0	0.00	100.56	0.0	0	0.0	Blue

Assay Class: High Sensitivity DNA Assay  
 Data Path: C:\...ents and Settings\Bioanalyzer\2012-02-28\2012-02-28\_005.xad

Created: 2/28/2012 2:47:17 PM  
 Modified: 2/28/2012 3:26:15 PM

**Electropherogram Summary Continued ...**



**Overall Results for sample 9 : NT2\_DRIP16\_I**

Number of peaks found: 10                      Corr. Area 1: 1,639.6  
 Noise: 0.1

**Peak table for sample 9 : NT2\_DRIP16\_I**

Peak	Size [bp]	Conc. [pg/μl]	Molarity [pmol/l]	Observations
1	35	125.00	5,411.3	Lower Marker
2	38	127.32	5,039.2	
3	42	185.07	6,678.7	
4	48	30.95	968.1	
5	131	28.51	329.2	
6	368	18.89	77.8	
7	575	261.27	688.8	
8	622	90.18	219.7	
9	810	769.92	1,440.9	
10	849	892.90	1,593.8	
11	2,339	8.15	5.3	
12	10,380	75.00	10.9	Upper Marker

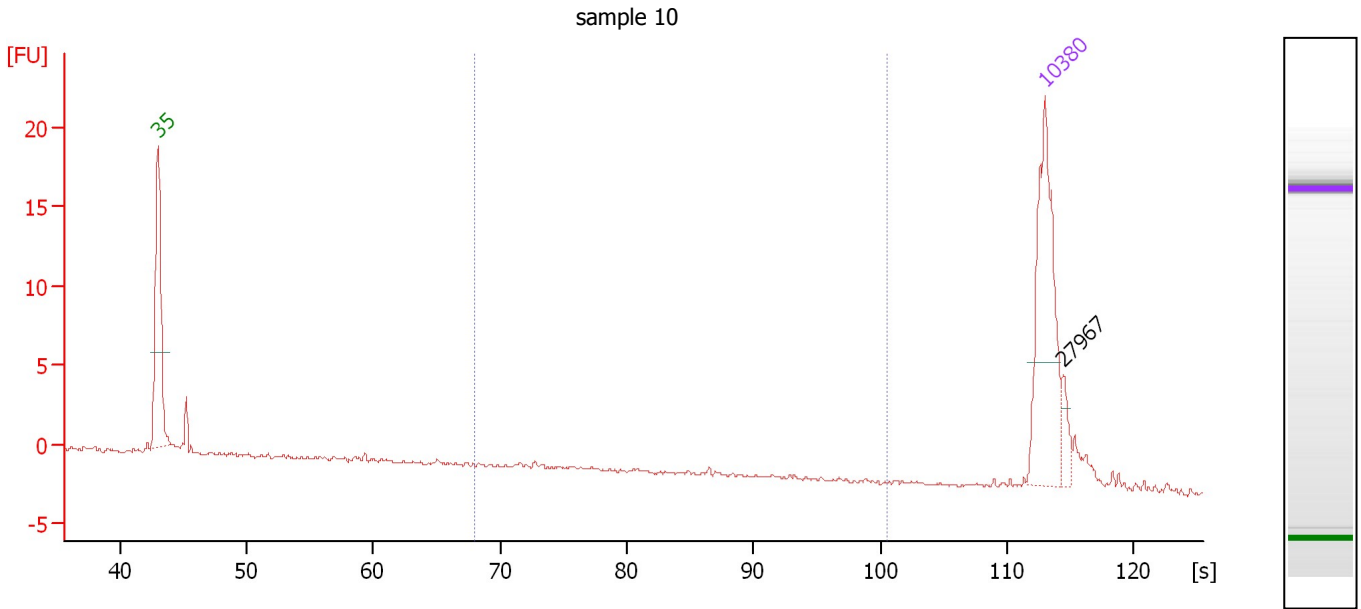
**Region table for sample 9 : NT2\_DRIP16\_I**

From [s]	Molarity [pmol/l]	Average Size [bp]	Conc. [pg/μl]	To [s]	Corr. Area	% of Total	Size distribution in CV [%]	Color
67.96	9,722.0	642	3,225.24	100.56	1,639.6	69	34.0	Blue

Assay Class: High Sensitivity DNA Assay  
 Data Path: C:\...ents and Settings\Bioanalyzer\2012-02-28\2012-02-28\_005.xad

Created: 2/28/2012 2:47:17 PM  
 Modified: 2/28/2012 3:26:15 PM

**Electropherogram Summary Continued ...**



**Overall Results for sample 10 : sample 10**

Number of peaks found: 1                      Corr. Area 1: 0.4  
 Noise: 0.1

**Peak table for sample 10 : sample 10**

Peak	Size [bp]	Conc. [pg/μl]	Molarity [pmol/l]	Observations
1	35	125.00	5,411.3	Lower Marker
2	10,380	75.00	10.9	Upper Marker
3	27,967	0.00	0.0	

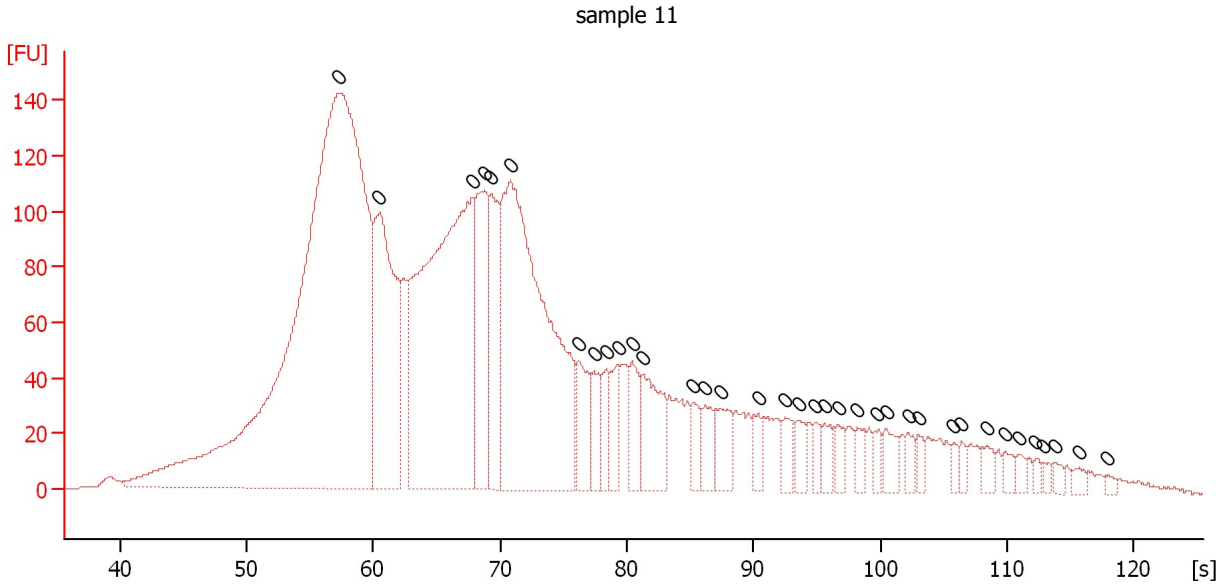
**Region table for sample 10 : sample 10**

From [s]	Molarity [pmol/l]	Average Size [bp]	Conc. [pg/μl]	To [s]	Corr. Area	% of Total	Size distribution in CV [%]	Color
67.96	7.1	377	1.46	100.56	0.4	3	37.9	Blue

Assay Class: High Sensitivity DNA Assay  
 Data Path: C:\...ents and Settings\Bioanalyzer\2012-02-28\2012-02-28\_005.xad

Created: 2/28/2012 2:47:17 PM  
 Modified: 2/28/2012 3:26:15 PM

**Electropherogram Summary Continued ...**



**Overall Results for sample 11 : sample 11**

Number of peaks found: 0                      Noise: 0.2

**Peak table for sample 11 : sample 11**

Peak	Size [bp]	Conc. [pg/μl]	Molarity [pmol/l]	Observations
1	0	0.00	0.0	
2	0	0.00	0.0	
3	0	0.00	0.0	
4	0	0.00	0.0	
5	0	0.00	0.0	
6	0	0.00	0.0	
7	0	0.00	0.0	
8	0	0.00	0.0	
9	0	0.00	0.0	
10	0	0.00	0.0	
11	0	0.00	0.0	
12	0	0.00	0.0	
13	0	0.00	0.0	
14	0	0.00	0.0	
15	0	0.00	0.0	
16	0	0.00	0.0	
17	0	0.00	0.0	
18	0	0.00	0.0	
19	0	0.00	0.0	
20	0	0.00	0.0	
21	0	0.00	0.0	
22	0	0.00	0.0	
23	0	0.00	0.0	
24	0	0.00	0.0	
25	0	0.00	0.0	
26	0	0.00	0.0	
27	0	0.00	0.0	



Assay Class: High Sensitivity DNA Assay  
Data Path: C:\...ents and Settings\Bioanalyzer\2012-02-28\2012-02-28\_005.xad

Created: 2/28/2012 2:47:17 PM  
Modified: 2/28/2012 3:26:15 PM

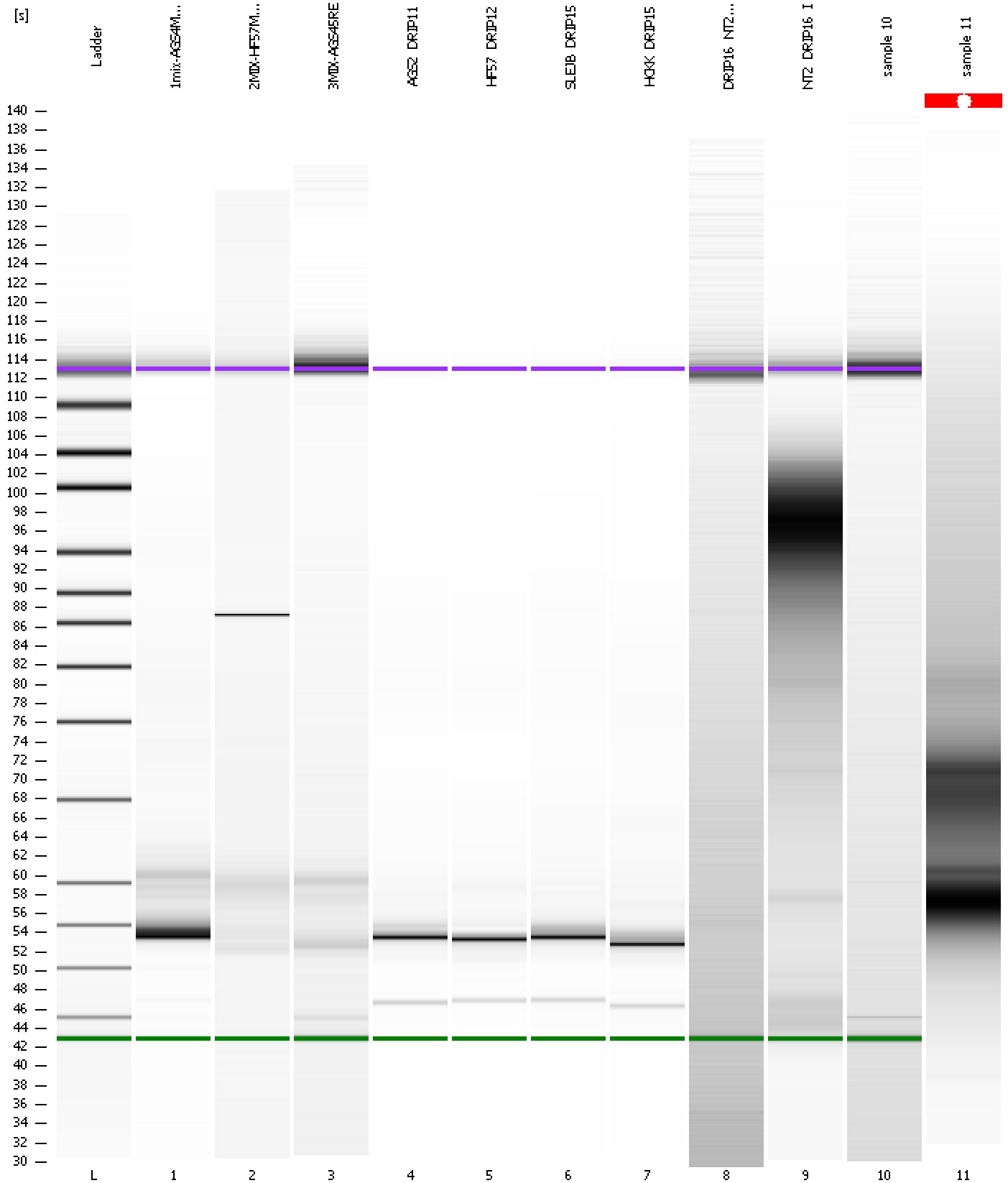
**Electropherogram Summary Continued ...****... Peak table for sample 11 : sample 11**

Peak	Size [bp]	Conc. [pg/ $\mu$ l]	Molarity [pmol/l]	Observations
28	0	0.00	0.0	
29	0	0.00	0.0	
30	0	0.00	0.0	
31	0	0.00	0.0	
32	0	0.00	0.0	
33	0	0.00	0.0	
34	0	0.00	0.0	
35	0	0.00	0.0	
36	0	0.00	0.0	

Assay Class: High Sensitivity DNA Assay  
Data Path: C:\...ents and Settings\Bioanalyzer\2012-02-28\2012-02-28\_005.xad

Created: 2/28/2012 2:47:17 PM  
Modified: 2/28/2012 3:26:15 PM

Gel Image

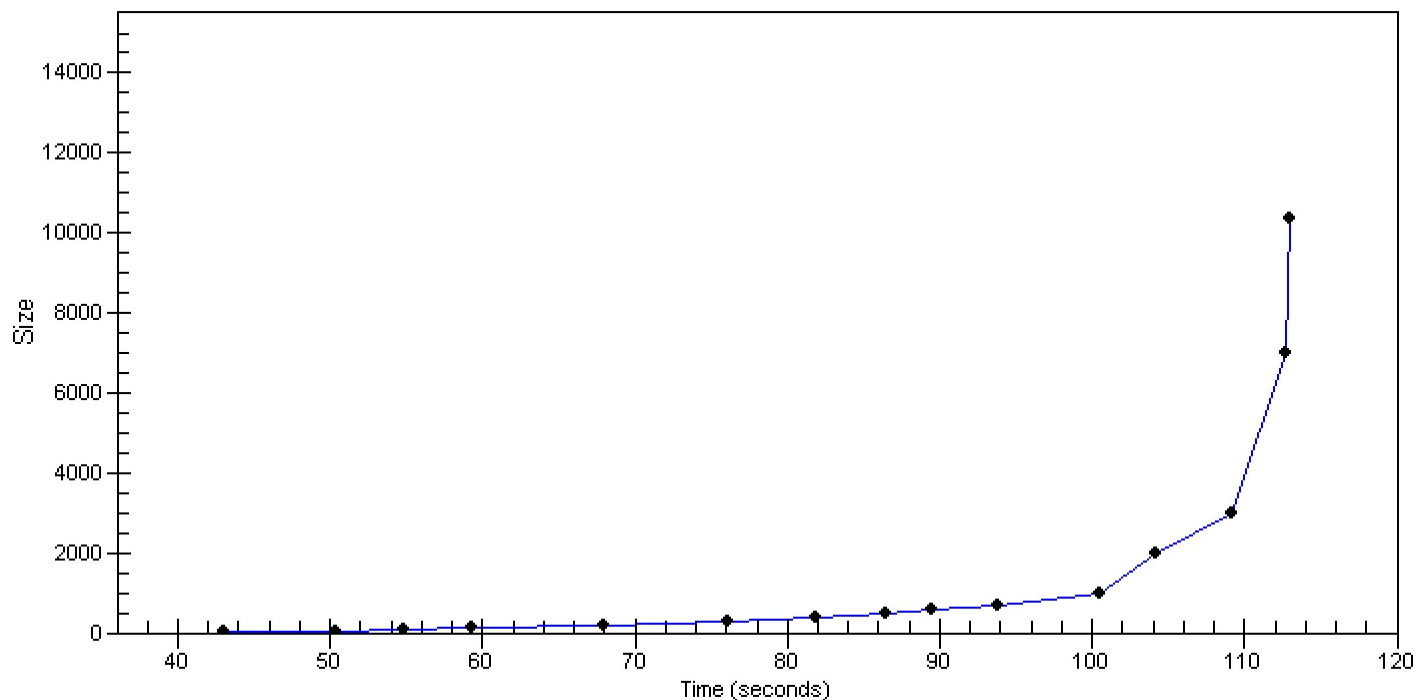


Assay Class: High Sensitivity DNA Assay  
Data Path: C:\...ents and Settings\Bioanalyzer\2012-02-28\2012-02-28\_005.xad

Created: 2/28/2012 2:47:17 PM  
Modified: 2/28/2012 3:26:15 PM

**Curves**

**Standard Curve**



Assay Class: High Sensitivity DNA Assay  
 Data Path: C:\...ents and Settings\Bioanalyzer\2012-02-28\2012-02-28\_005.xad

Created: 2/28/2012 2:47:17 PM  
 Modified: 2/28/2012 3:26:15 PM

**Run Logbook**

Description	Number	Source	Category	Sub Category	Time	Time Zone	User	Host
Run ended on port 1 (Number of wells acquired: 12)		Instrument	Run		2/28/2012 3:28:37 PM	(GMT --08:00) Pacific Standard Time	UC Davis	D8XSMGH1
Run started on port 1 (File: C:\Documents and Settings\Bioanalyzer\2012-02-28\2012-02-28_005.xad)		Instrument	Run		2/28/2012 2:47:23 PM	(GMT --08:00) Pacific Standard Time	UC Davis	D8XSMGH1
Product Number : G2938B		Instrument	Run		2/28/2012 2:47:23 PM	(GMT --08:00) Pacific Standard Time	UC Davis	D8XSMGH1
Name :		Instrument	Run		2/28/2012 2:47:23 PM	(GMT --08:00) Pacific Standard Time	UC Davis	D8XSMGH1
Vendor : Agilent Technologies		Instrument	Run		2/28/2012 2:47:23 PM	(GMT --08:00) Pacific Standard Time	UC Davis	D8XSMGH1
Serial# : DE13701086		Instrument	Run		2/28/2012 2:47:23 PM	(GMT --08:00) Pacific Standard Time	UC Davis	D8XSMGH1
Firmware : C.01.069		Instrument	Run		2/28/2012 2:47:23 PM	(GMT --08:00) Pacific Standard Time	UC Davis	D8XSMGH1
Cartridge : Electrode		Instrument	Run		2/28/2012 2:47:23 PM	(GMT --08:00) Pacific Standard Time	UC Davis	D8XSMGH1