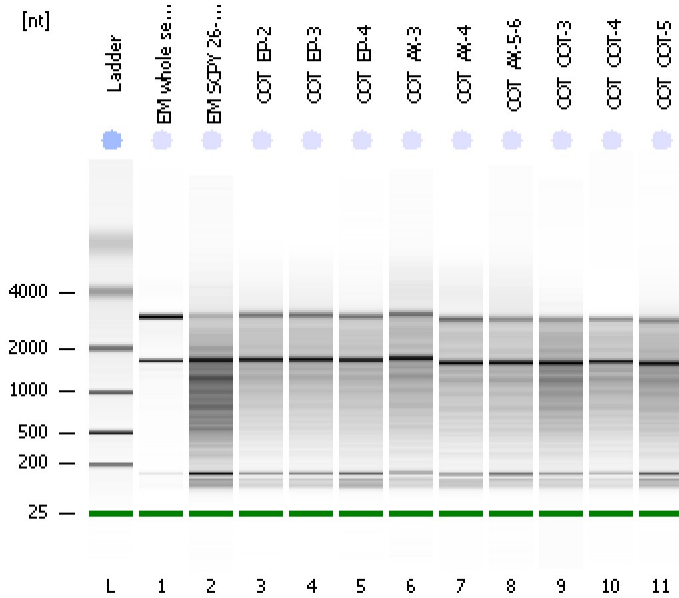


Assay Class: Eukaryote Total RNA Pico
Data Path: C:\...ents and Settings\Bioanalyzer\2012-02-28\2012-02-28_004.xad

Created: 2/28/2012 1:36:56 PM
Modified: 2/28/2012 1:59:52 PM

Electrophoresis File Run Summary



Instrument Information:

Instrument Name: DE13701086 Firmware: C.01.069
Serial#: DE13701086 Type: G2938B

Assay Information:

Assay Origin Path: C:\Program Files\Agilent\2100 bioanalyzer\2100 expert\assays\RNA\Eukaryote Total RNA Pico Series II.xsy

Assay Class: Eukaryote Total RNA Pico

Version: 2.6

Assay Comments: Total RNA Analysis pg sensitivity (Eukaryote)

© Copyright 2003 - 2009 Agilent Technologies, Inc.

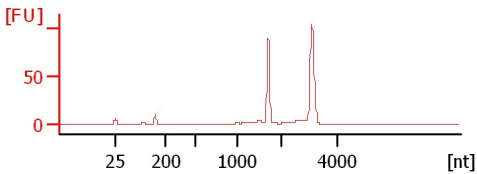
Chip Information:

Chip Lot #:

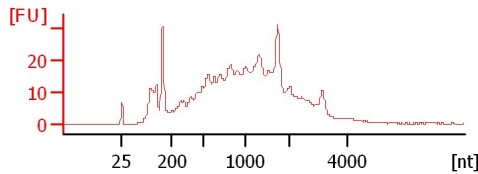
Reagent Kit Lot #:

Chip Comments:

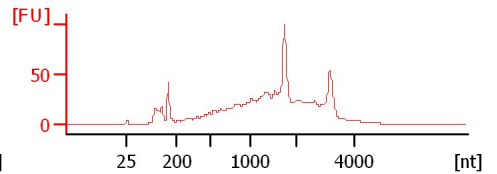
EM whole seed control
RIN: 9.50



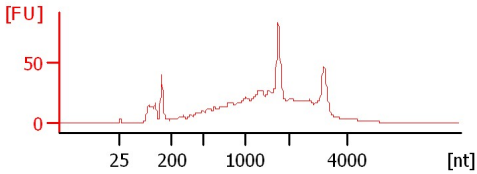
EM SCPY 26-30
RIN: 3.30



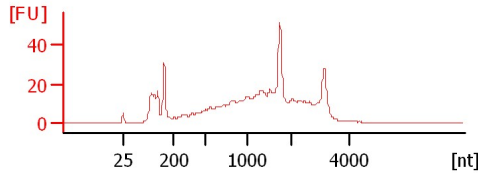
COT_EP-2
RIN:5



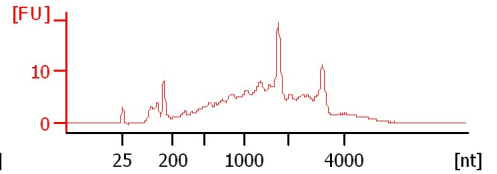
COT_EP-3
RIN: 5.10



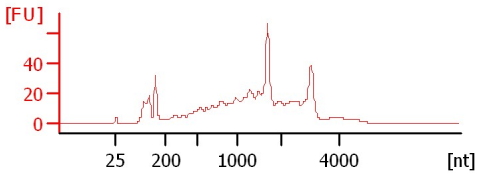
COT_EP-4
RIN: 5.20



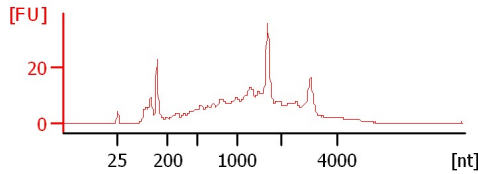
COT_AX-3
RIN:5



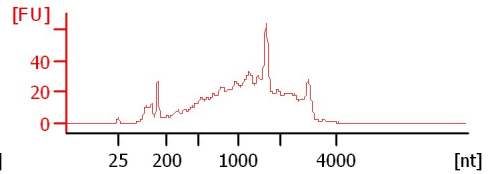
COT_AX-4
RIN: 5.50



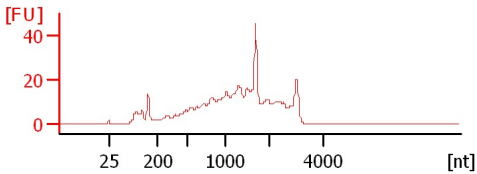
COT_AX-5-6
RIN: 5.10



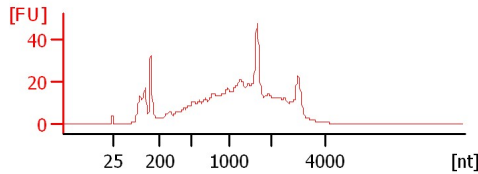
COT_COT-3
RIN: 4.20



COT_COT-4
RIN: 4.80



COT_COT-5
RIN: 4.50



Assay Class: Eukaryote Total RNA Pico
 Data Path: C:\...ents and Settings\Bioanalyzer\2012-02-28\2012-02-28_004.xad

Created: 2/28/2012 1:36:56 PM
 Modified: 2/28/2012 1:59:52 PM

Electrophoresis File Run Summary (Chip Summary)

Sample Name	Sample Comment	Status	Result Label	Result Color
EM whole seed control		✓	RIN: 9.50	
EM SCPY 26-30		✓	RIN: 3.30	
COT_EP-2		✓	RIN:5	
COT_EP-3		✓	RIN: 5.10	
COT_EP-4		✓	RIN: 5.20	
COT_AX-3		✓	RIN:5	
COT_AX-4		✓	RIN: 5.50	
COT_AX-5-6		✓	RIN: 5.10	
COT_COT-3		✓	RIN: 4.20	
COT_COT-4		✓	RIN: 4.80	
COT_COT-5		✓	RIN: 4.50	
Ladder		✓	All Other Samples	

Chip Lot #

Reagent Kit Lot #

Chip Comments :

Assay Class: Eukaryote Total RNA Pico
Data Path: C:\...ents and Settings\Bioanalyzer\2012-02-28\2012-02-28_004.xad

Created: 2/28/2012 1:36:56 PM
Modified: 2/28/2012 1:59:52 PM

Electrophoresis Assay Details

General Analysis Settings

Number of Available Sample and Ladder Wells (Max.) : 12
Minimum Visible Range [s] : 17
Maximum Visible Range [s] : 70
Start Analysis Time Range [s] : 18
End Analysis Time Range [s] : 69
Ladder Concentration [pg/ μ l] : 1000
Lower Marker Concentration [pg/ μ l] : 0
Upper Marker Concentration [pg/ μ l] : 0
Used Lower Marker for Quantitation
Standard Curve Fit is Logarithmic
Show Data Aligned to Lower Marker

Integrator Settings

Integration Start Time [s] : 18
Integration End Time [s] : 69
Slope Threshold : 0.6
Height Threshold [FU] : 0.5
Area Threshold : 0.2
Width Threshold [s] : 0.3
Baseline Plateau [s] : 6

Filter Settings

Filter Width [s] : 0.5
Polynomial Order : 4

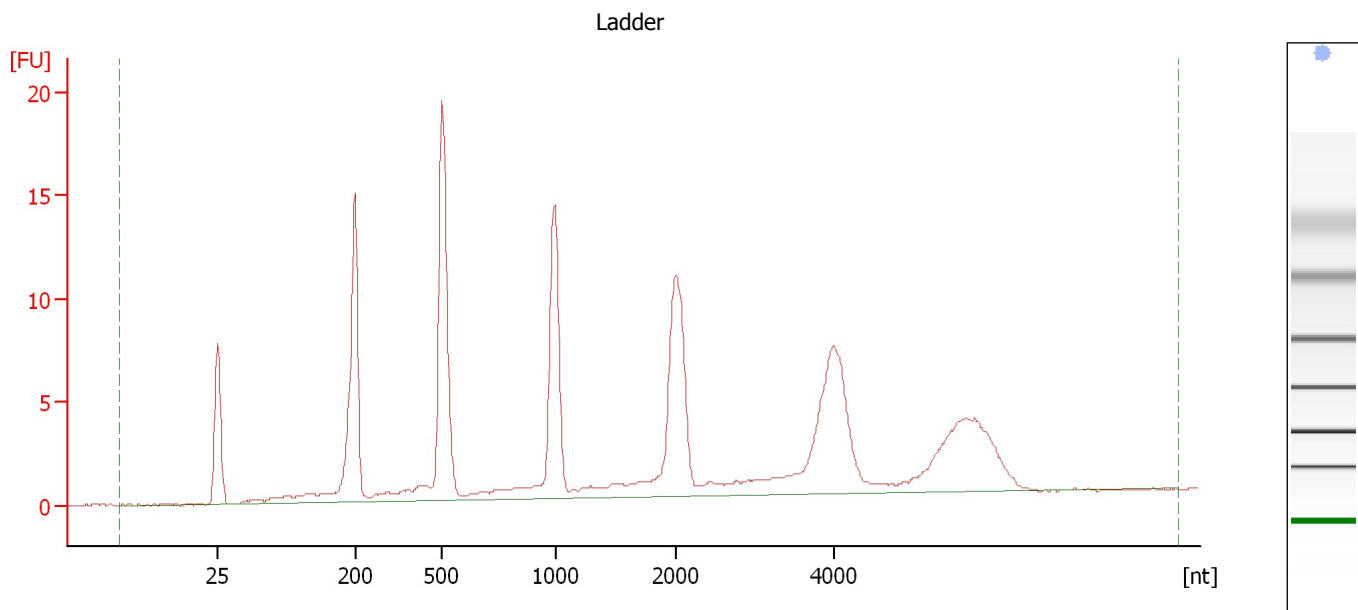
Ladder

Ladder Peak	Size
1	25
2	200
3	500
4	1000
5	2000
6	4000

Assay Class: Eukaryote Total RNA Pico
Data Path: C:\...ents and Settings\Bioanalyzer\2012-02-28\2012-02-28_004.xad

Created: 2/28/2012 1:36:56 PM
Modified: 2/28/2012 1:59:52 PM

Electropherogram Summary



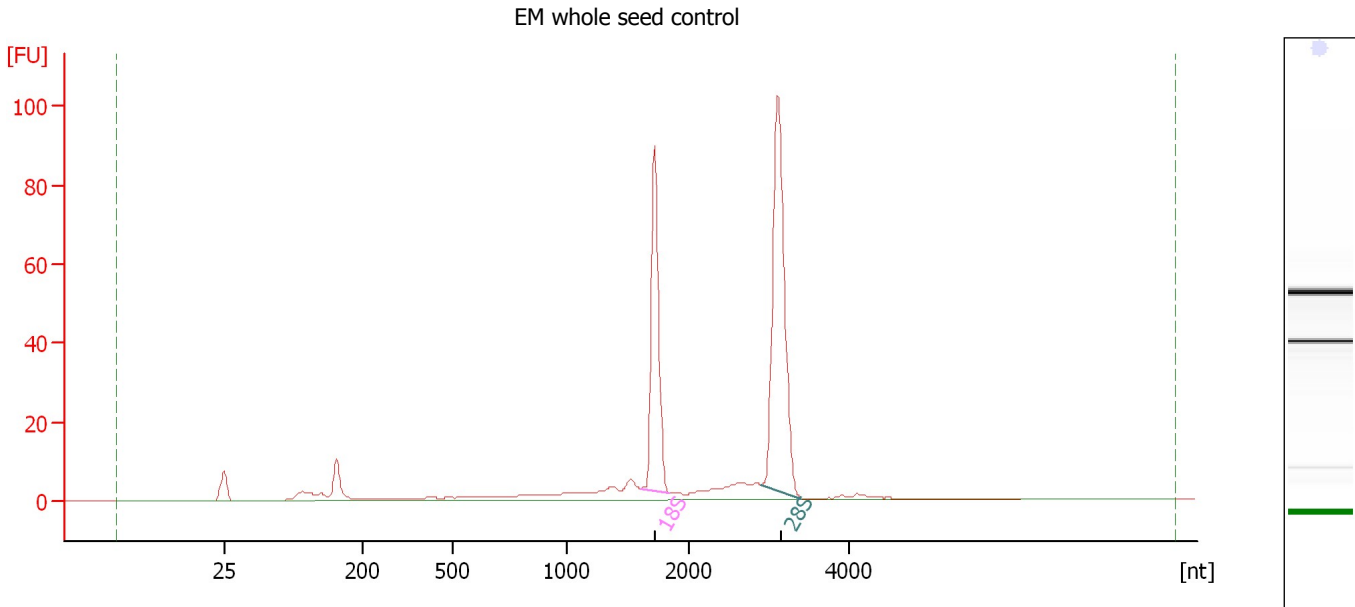
Overall Results for Ladder

RNA Area:	149.3	Result Flagging Color:	
RNA Concentration:	1,000 pg/μl	Result Flagging Label:	All Other Samples

Assay Class: Eukaryote Total RNA Pico
Data Path: C:\...ents and Settings\Bioanalyzer\2012-02-28\2012-02-28_004.xad

Created: 2/28/2012 1:36:56 PM
Modified: 2/28/2012 1:59:52 PM

Electropherogram Summary Continued ...



Overall Results for sample 1 : EM whole seed control

RNA Area: 316.0 RNA Integrity Number (RIN): 9.5 (B.02.08)
RNA Concentration: 2,116 pg/μl Result Flagging Color:
rRNA Ratio [28s / 18s]: 1.6 Result Flagging Label: RIN: 9.50

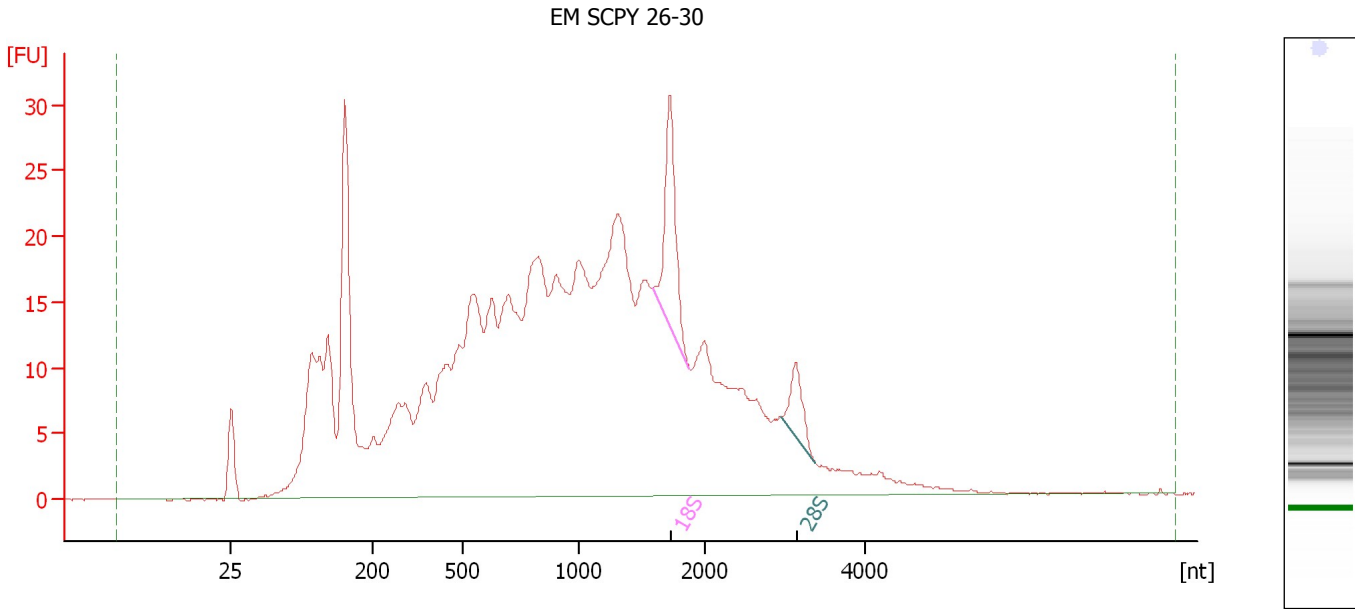
Fragment table for sample 1 : EM whole seed control

Name	Start Size [nt]	End Size [nt]	Area	% of total Area
18S	1,602	1,835	79.3	25.1
28S	2,895	3,403	126.6	40.1

Assay Class: Eukaryote Total RNA Pico
 Data Path: C:\...ents and Settings\Bioanalyzer\2012-02-28\2012-02-28_004.xad

Created: 2/28/2012 1:36:56 PM
 Modified: 2/28/2012 1:59:52 PM

Electropherogram Summary Continued ...



Overall Results for sample 2 : EM SCPY 26-30

RNA Area:	739.8	RNA Integrity Number (RIN):	3.3 (B.02.08)
RNA Concentration:	4,954 pg/μl	Result Flagging Color:	
rRNA Ratio [28s / 18s]:	0.3	Result Flagging Label:	RIN: 3.30

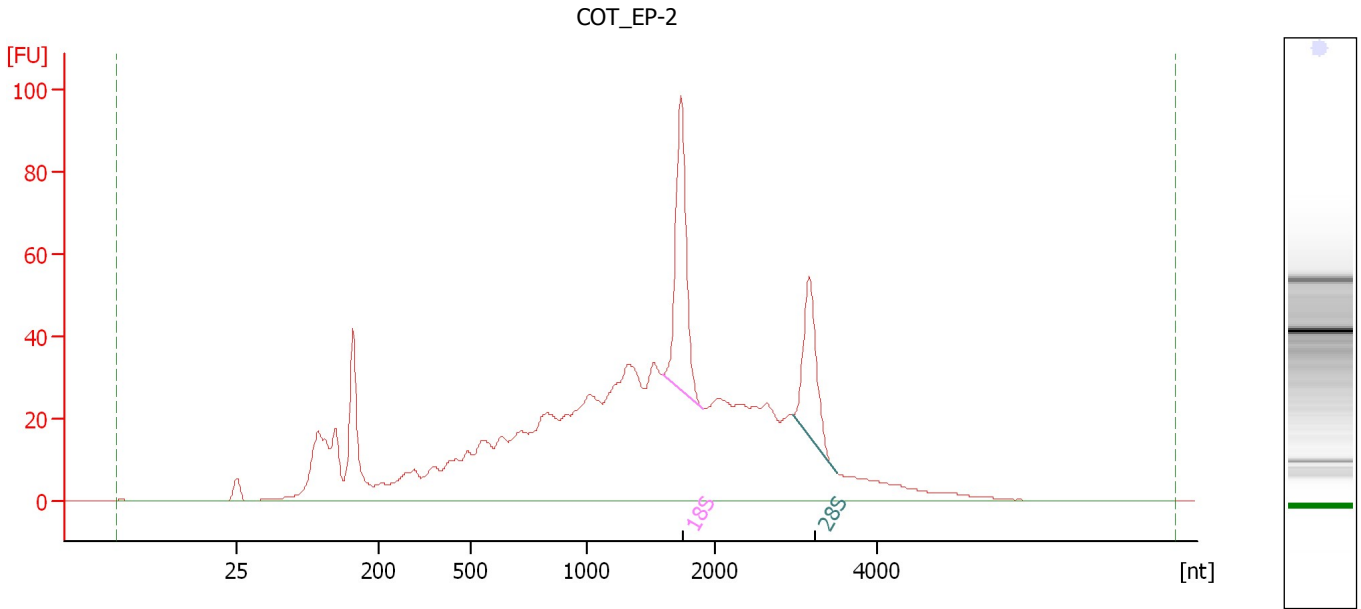
Fragment table for sample 2 : EM SCPY 26-30

Name	Start Size [nt]	End Size [nt]	Area	% of total Area
18S	1,588	1,886	22.4	3.0
28S	2,958	3,380	7.1	1.0

Assay Class: Eukaryote Total RNA Pico
Data Path: C:\...ents and Settings\Bioanalyzer\2012-02-28\2012-02-28_004.xad

Created: 2/28/2012 1:36:56 PM
Modified: 2/28/2012 1:59:52 PM

Electropherogram Summary Continued ...



Overall Results for sample 3 : COT_EP-2

RNA Area: 1,257.1 RNA Integrity Number (RIN): 5 (B.02.08)
RNA Concentration: 8,419 pg/μl Result Flagging Color:
rRNA Ratio [28s / 18s]: 0.6 Result Flagging Label: RIN:5

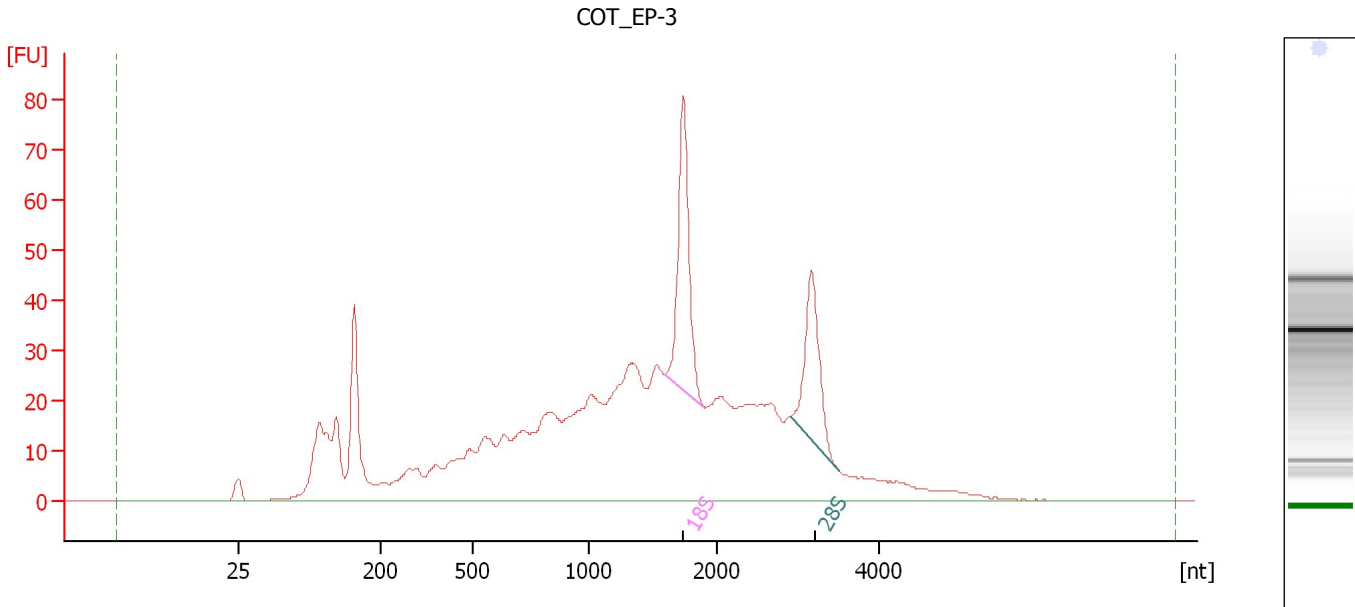
Fragment table for sample 3 : COT_EP-2

Name	Start Size [nt]	End Size [nt]	Area	% of total Area
18S	1,597	1,909	88.7	7.1
28S	2,956	3,491	53.7	4.3

Assay Class: Eukaryote Total RNA Pico
Data Path: C:\...ents and Settings\Bioanalyzer\2012-02-28\2012-02-28_004.xad

Created: 2/28/2012 1:36:56 PM
Modified: 2/28/2012 1:59:52 PM

Electropherogram Summary Continued ...



Overall Results for sample 4 : COT_EP-3

RNA Area: 1,065.7 RNA Integrity Number (RIN): 5.1 (B.02.08)
RNA Concentration: 7,137 pg/μl Result Flagging Color:
rRNA Ratio [28s / 18s]: 0.7 Result Flagging Label: RIN: 5.10

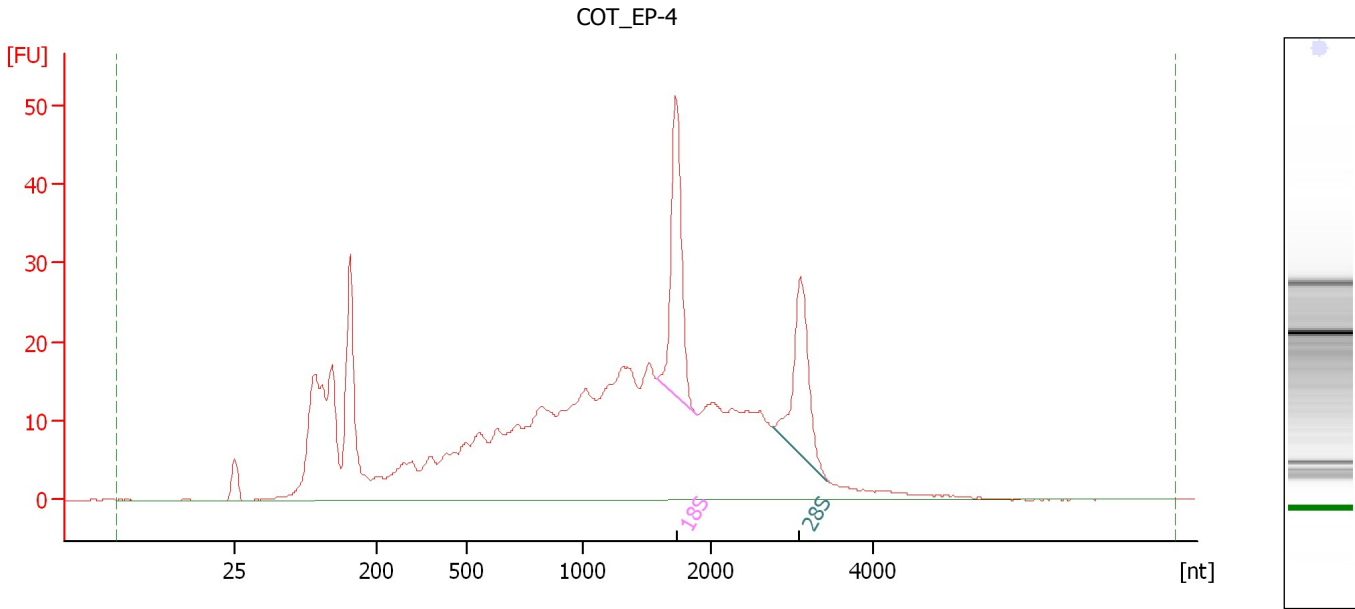
Fragment table for sample 4 : COT_EP-3

Name	Start Size [nt]	End Size [nt]	Area	% of total Area
18S	1,590	1,901	74.7	7.0
28S	2,916	3,503	49.8	4.7

Assay Class: Eukaryote Total RNA Pico
 Data Path: C:\...ents and Settings\Bioanalyzer\2012-02-28\2012-02-28_004.xad

Created: 2/28/2012 1:36:56 PM
 Modified: 2/28/2012 1:59:52 PM

Electropherogram Summary Continued ...



Overall Results for sample 5 : COT_EP-4

RNA Area:	697.4	RNA Integrity Number (RIN):	5.2 (B.02.08)
RNA Concentration:	4,670 pg/μl	Result Flagging Color:	
rRNA Ratio [28s / 18s]:	0.8	Result Flagging Label:	RIN: 5.20

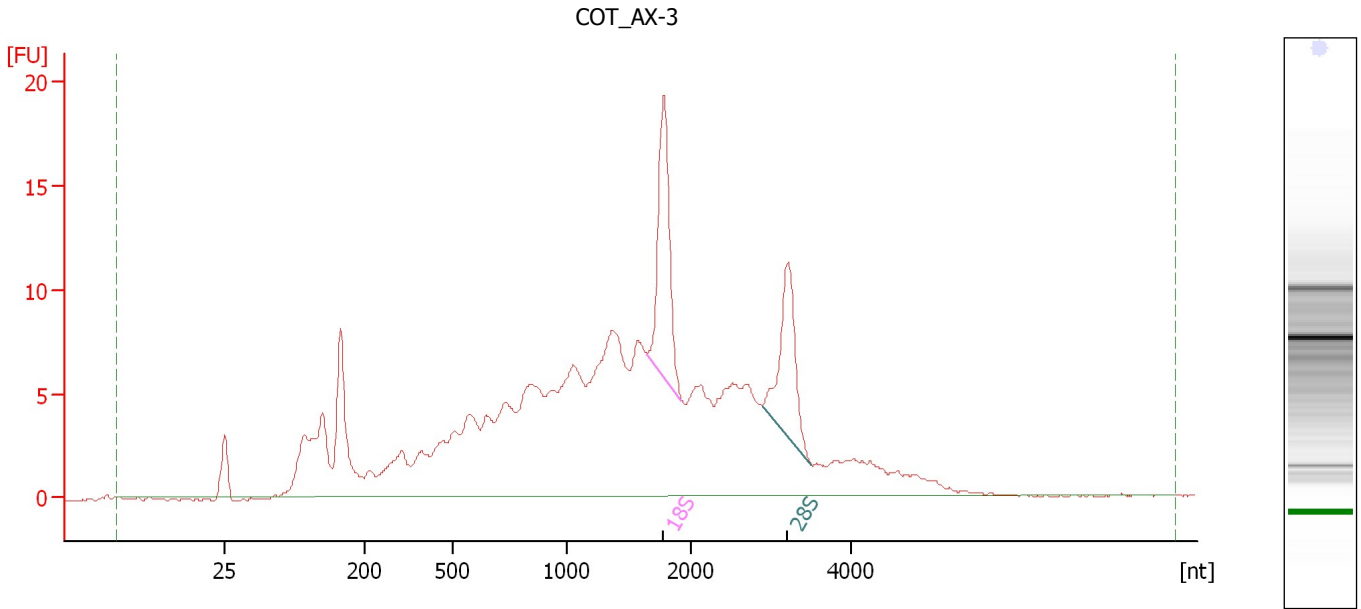
Fragment table for sample 5 : COT_EP-4

Name	Start Size [nt]	End Size [nt]	Area	% of total Area
18S	1,577	1,889	46.1	6.6
28S	2,760	3,442	35.1	5.0

Assay Class: Eukaryote Total RNA Pico
Data Path: C:\...ents and Settings\Bioanalyzer\2012-02-28\2012-02-28_004.xad

Created: 2/28/2012 1:36:56 PM
Modified: 2/28/2012 1:59:52 PM

Electropherogram Summary Continued ...



Overall Results for sample 6 : COT_AX-3

RNA Area: 290.0 RNA Integrity Number (RIN): 5 (B.02.08)
RNA Concentration: 1,942 pg/μl Result Flagging Color:
rRNA Ratio [28s / 18s]: 0.7 Result Flagging Label: RIN:5

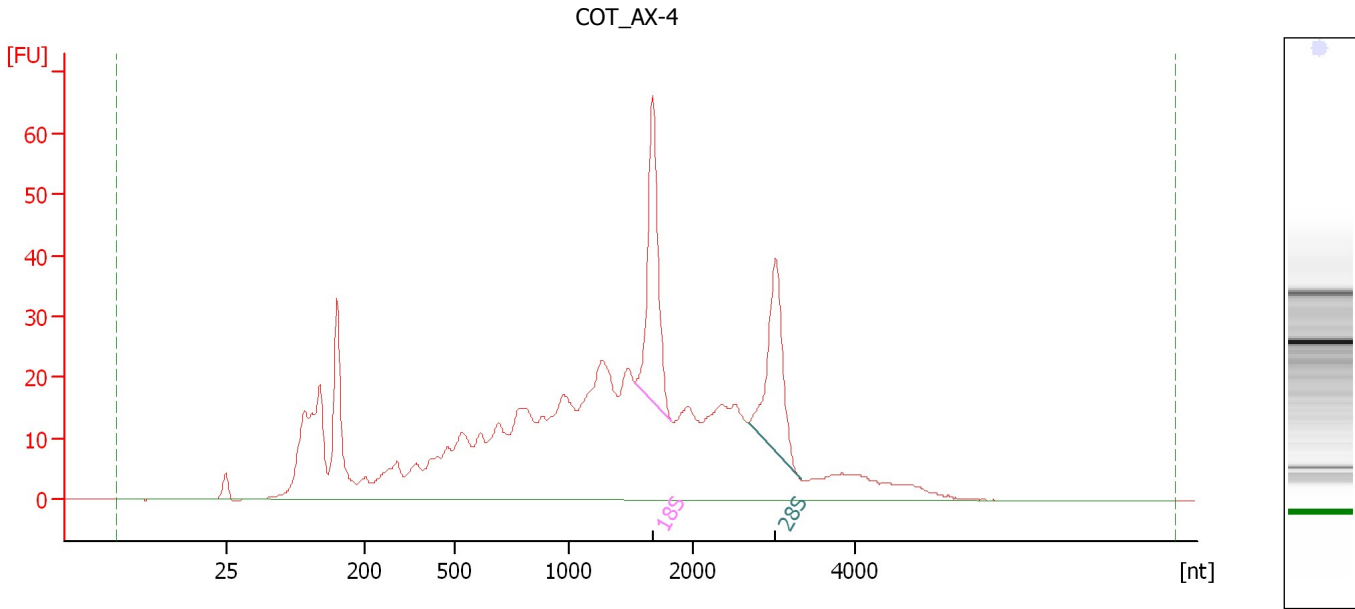
Fragment table for sample 6 : COT_AX-3

Name	Start Size [nt]	End Size [nt]	Area	% of total Area
18S	1,638	1,913	18.0	6.2
28S	2,881	3,495	13.5	4.6

Assay Class: Eukaryote Total RNA Pico
Data Path: C:\...ents and Settings\Bioanalyzer\2012-02-28\2012-02-28_004.xad

Created: 2/28/2012 1:36:56 PM
Modified: 2/28/2012 1:59:52 PM

Electropherogram Summary Continued ...



Overall Results for sample 7 : COT_AX-4

RNA Area: 860.8 RNA Integrity Number (RIN): 5.5 (B.02.08)
RNA Concentration: 5,764 pg/μl Result Flagging Color:
rRNA Ratio [28s / 18s]: 0.8 Result Flagging Label: RIN: 5.50

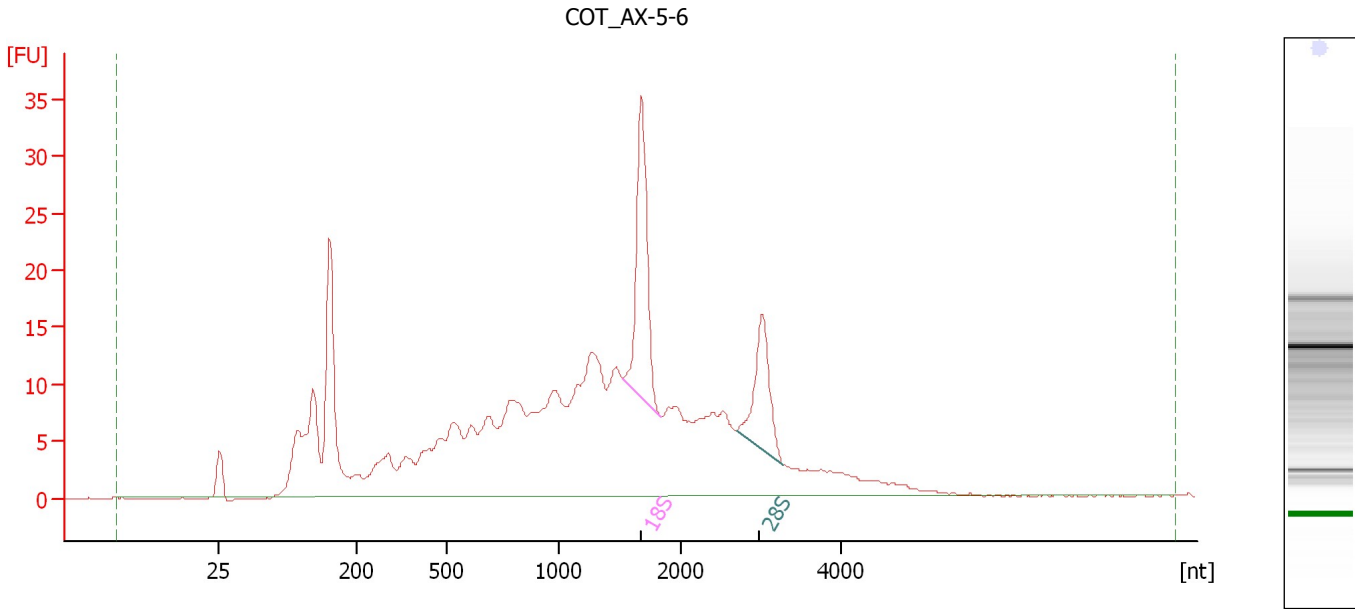
Fragment table for sample 7 : COT_AX-4

Name	Start Size [nt]	End Size [nt]	Area	% of total Area
18S	1,519	1,820	63.3	7.3
28S	2,681	3,334	50.8	5.9

Assay Class: Eukaryote Total RNA Pico
 Data Path: C:\...ents and Settings\Bioanalyzer\2012-02-28\2012-02-28_004.xad

Created: 2/28/2012 1:36:56 PM
 Modified: 2/28/2012 1:59:52 PM

Electropherogram Summary Continued ...



Overall Results for sample 8 : COT AX-5-6

RNA Area:	459.5	RNA Integrity Number (RIN):	5.1 (B.02.08)
RNA Concentration:	3,077 pg/μl	Result Flagging Color:	
rRNA Ratio [28s / 18s]:	0.6	Result Flagging Label:	RIN: 5.10

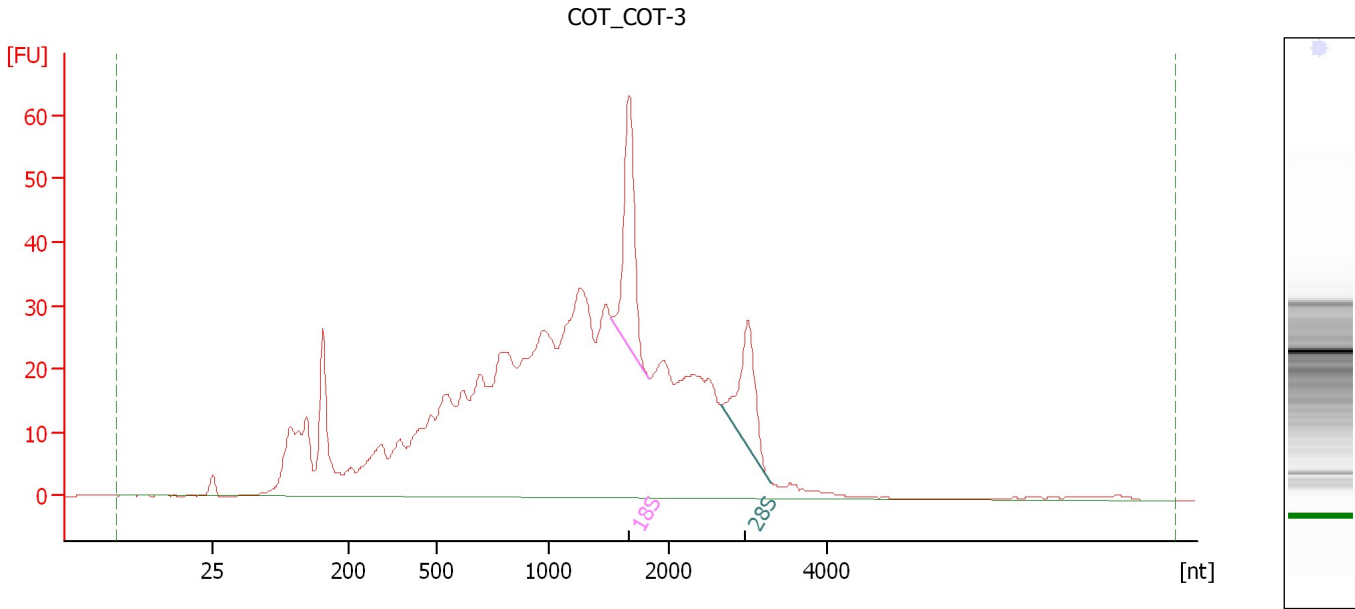
Fragment table for sample 8 : COT AX-5-6

Name	Start Size [nt]	End Size [nt]	Area	% of total Area
18S	1,525	1,829	33.6	7.3
28S	2,694	3,287	19.1	4.2

Assay Class: Eukaryote Total RNA Pico
Data Path: C:\...ents and Settings\Bioanalyzer\2012-02-28\2012-02-28_004.xad

Created: 2/28/2012 1:36:56 PM
Modified: 2/28/2012 1:59:52 PM

Electropherogram Summary Continued ...



Overall Results for sample 9 : COT_COT-3

RNA Area: 1,049.2 RNA Integrity Number (RIN): 4.2 (B.02.08)
RNA Concentration: 7,026 pg/μl Result Flagging Color:
rRNA Ratio [28s / 18s]: 0.7 Result Flagging Label: RIN: 4.20

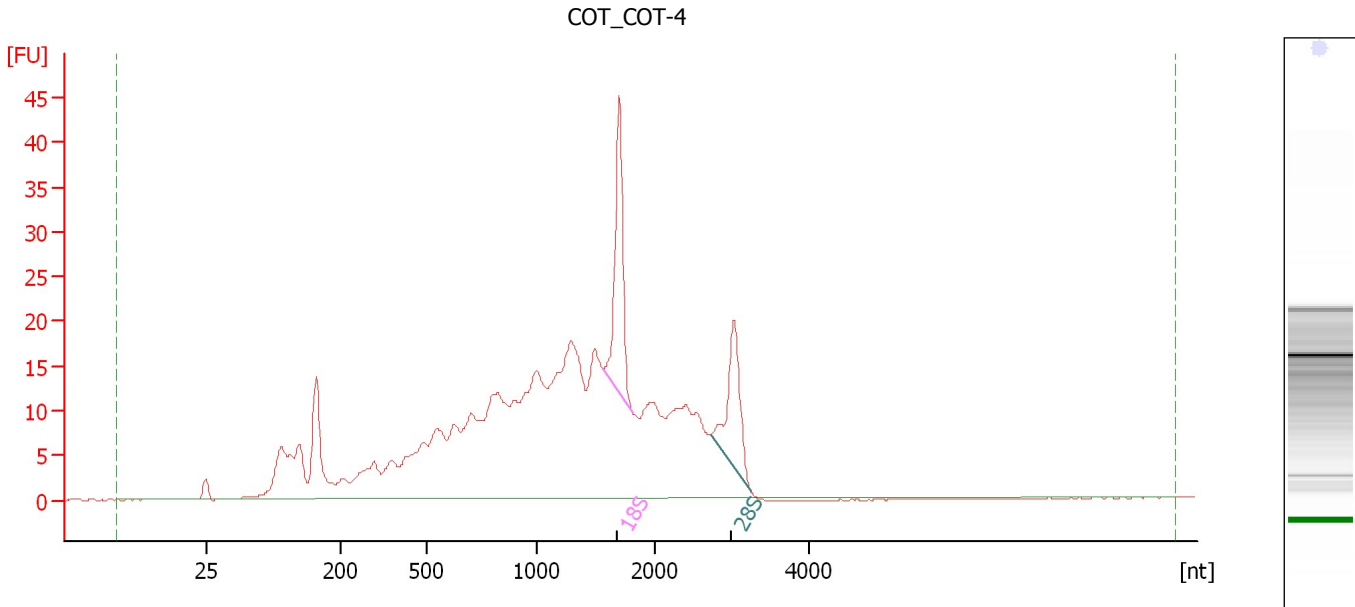
Fragment table for sample 9 : COT_COT-3

Name	Start Size [nt]	End Size [nt]	Area	% of total Area
18S	1,522	1,821	50.0	4.8
28S	2,666	3,294	32.8	3.1

Assay Class: Eukaryote Total RNA Pico
Data Path: C:\...ents and Settings\Bioanalyzer\2012-02-28\2012-02-28_004.xad

Created: 2/28/2012 1:36:56 PM
Modified: 2/28/2012 1:59:52 PM

Electropherogram Summary Continued ...



Overall Results for sample 10 : COT_COT-4

RNA Area:	532.3	RNA Integrity Number (RIN):	4.8 (B.02.08)
RNA Concentration:	3,565 µg/µl	Result Flagging Color:	
rRNA Ratio [28s / 18s]:	0.7	Result Flagging Label:	RIN: 4.80

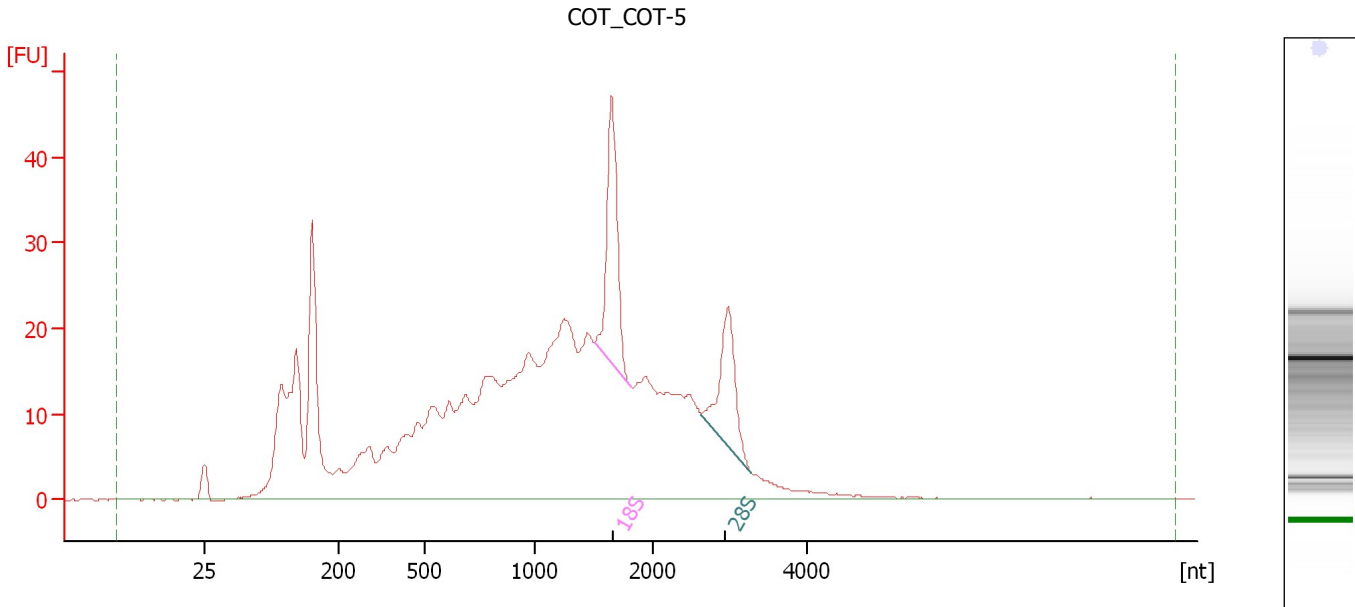
Fragment table for sample 10 : COT_COT-4

Name	Start Size [nt]	End Size [nt]	Area	% of total Area
18S	1,562	1,803	32.2	6.0
28S	2,707	3,234	23.0	4.3

Assay Class: Eukaryote Total RNA Pico
 Data Path: C:\...ents and Settings\Bioanalyzer\2012-02-28\2012-02-28_004.xad

Created: 2/28/2012 1:36:56 PM
 Modified: 2/28/2012 1:59:52 PM

Electropherogram Summary Continued ...



Overall Results for sample 11 : COT_COT-5

RNA Area:	765.6	RNA Integrity Number (RIN):	4.5 (B.02.08)
RNA Concentration:	5,127 pg/μl	Result Flagging Color:	
rRNA Ratio [28s / 18s]:	0.7	Result Flagging Label:	RIN: 4.50

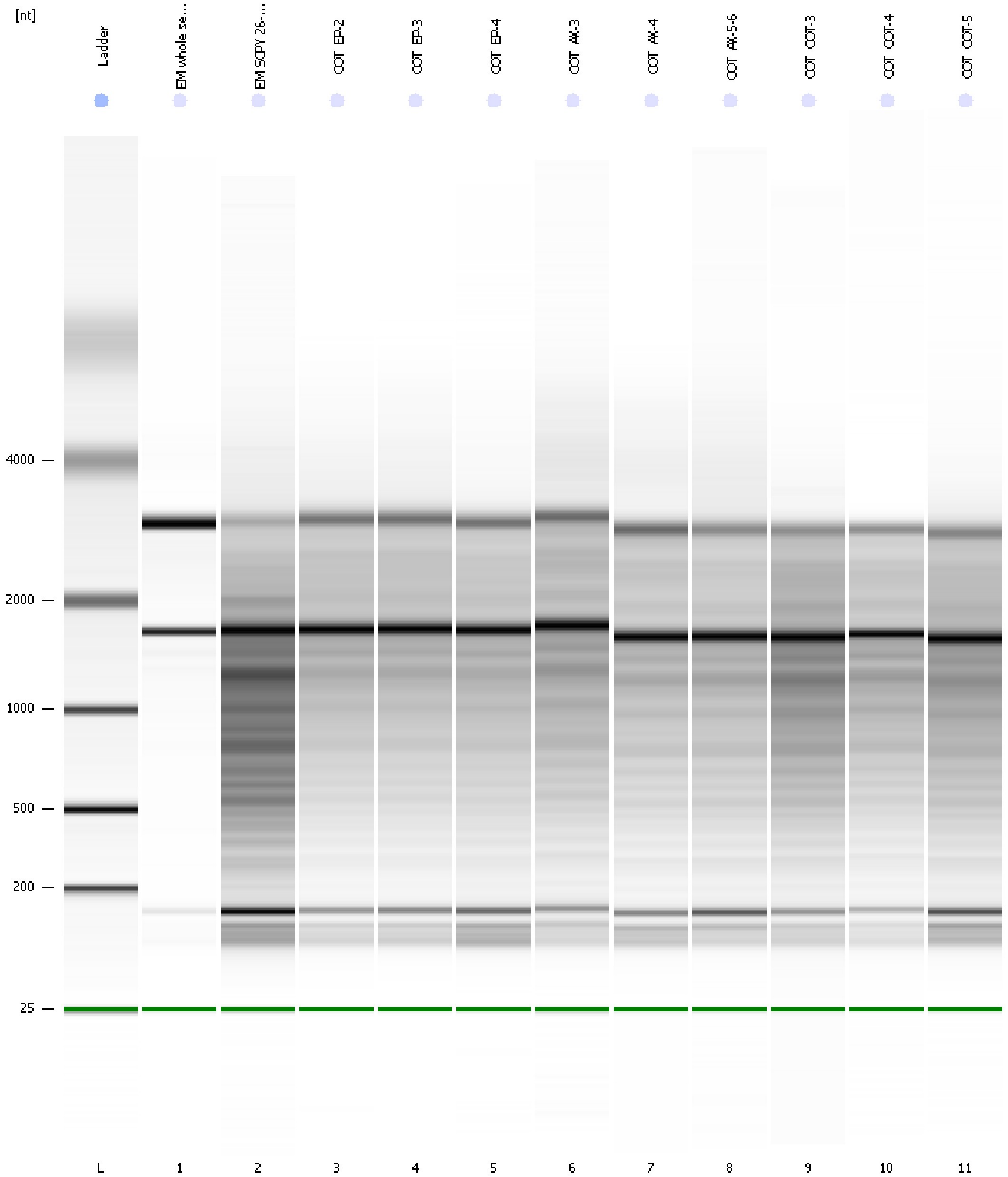
Fragment table for sample 11 : COT_COT-5

Name	Start Size [nt]	End Size [nt]	Area	% of total Area
18S	1,506	1,810	40.5	5.3
28S	2,623	3,276	27.3	3.6

Assay Class: Eukaryote Total RNA Pico
Data Path: C:\...ents and Settings\Bioanalyzer\2012-02-28\2012-02-28_004.xad

Created: 2/28/2012 1:36:56 PM
Modified: 2/28/2012 1:59:52 PM

Gel Image

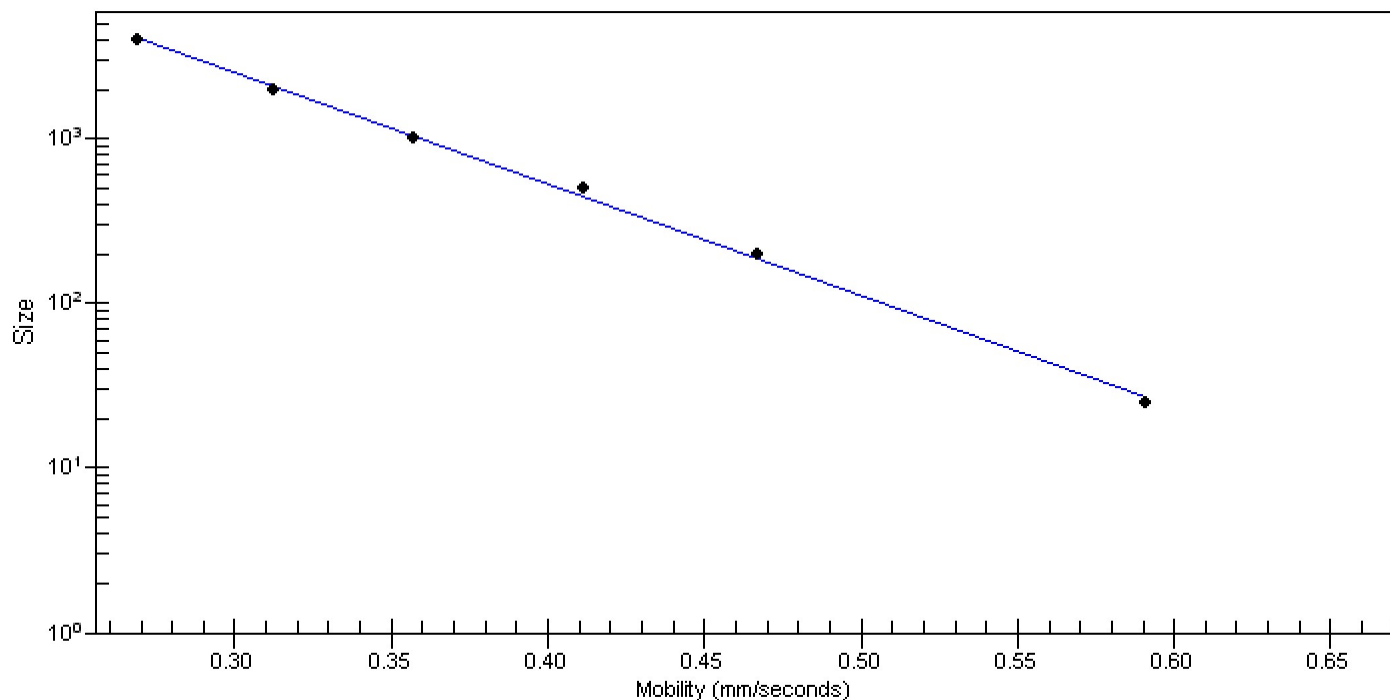


Assay Class: Eukaryote Total RNA Pico
Data Path: C:\...ents and Settings\Bioanalyzer\2012-02-28\2012-02-28_004.xad

Created: 2/28/2012 1:36:56 PM
Modified: 2/28/2012 1:59:52 PM

Curves

Standard Curve



Assay Class: Eukaryote Total RNA Pico
 Data Path: C:\...ents and Settings\Bioanalyzer\2012-02-28\2012-02-28_004.xad

Created: 2/28/2012 1:36:56 PM
 Modified: 2/28/2012 1:59:52 PM

Run Logbook

Description	Number	Source	Category	Sub Category	Time	Time Zone	User	Host
Run ended on port 1 (Number of wells acquired: 12)		Instrument	Run		2/28/2012 1:59:50 PM	(GMT --08:00) Pacific Standard Time	UC Davis	D8XSMGH1
Run started on port 1 (File: C:\Documents and Settings\Bioanalyzer\2012-02-28\2012-02-28_004.xad)		Instrument	Run		2/28/2012 1:37:01 PM	(GMT --08:00) Pacific Standard Time	UC Davis	D8XSMGH1
Product Number : G2938B		Instrument	Run		2/28/2012 1:37:01 PM	(GMT --08:00) Pacific Standard Time	UC Davis	D8XSMGH1
Name :		Instrument	Run		2/28/2012 1:37:01 PM	(GMT --08:00) Pacific Standard Time	UC Davis	D8XSMGH1
Vendor : Agilent Technologies		Instrument	Run		2/28/2012 1:37:01 PM	(GMT --08:00) Pacific Standard Time	UC Davis	D8XSMGH1
Serial# : DE13701086		Instrument	Run		2/28/2012 1:37:01 PM	(GMT --08:00) Pacific Standard Time	UC Davis	D8XSMGH1
Firmware : C.01.069		Instrument	Run		2/28/2012 1:37:01 PM	(GMT --08:00) Pacific Standard Time	UC Davis	D8XSMGH1
Cartridge : Electrode		Instrument	Run		2/28/2012 1:37:01 PM	(GMT --08:00) Pacific Standard Time	UC Davis	D8XSMGH1