

Assay Class: High Sensitivity DNA Assay
Data Path: C:\...ents and Settings\Bioanalyzer\2012-02-29\2012-02-29_002.xad

Created: 2/29/2012 10:38:43 AM
Modified: 2/29/2012 2:48:23 PM

Electrophoresis File Run Summary

Instrument Information:

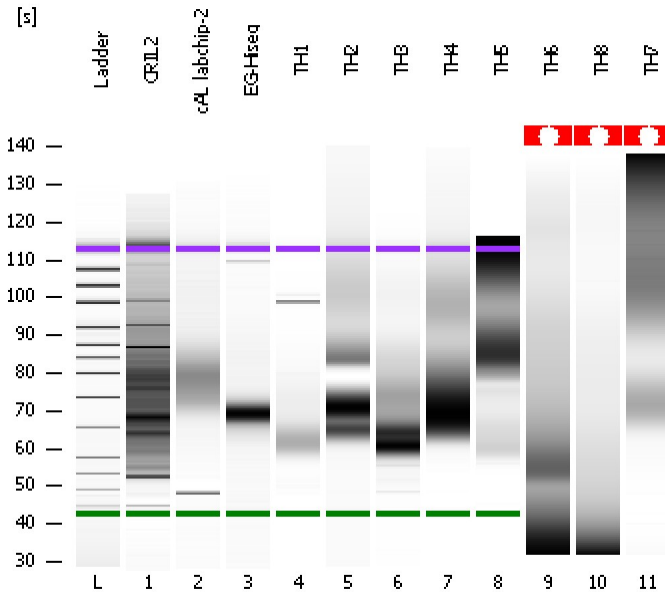
Instrument Name: DE13701086 Firmware: C.01.069
Serial#: DE13701086 Type: G2938B

Assay Information:

Assay Origin Path: C:\Program Files\Agilent\2100 bioanalyzer\2100 expert\assays\dsDNA\High Sensitivity DNA.xsy
Assay Class: High Sensitivity DNA Assay
Version: 1.03
Assay Comments: Copyright © 2003-2010 Agilent Technologies

Chip Information:

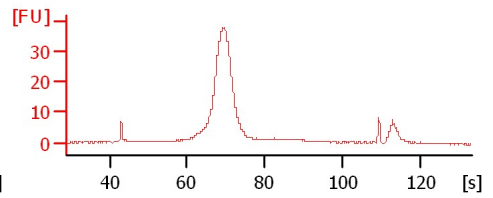
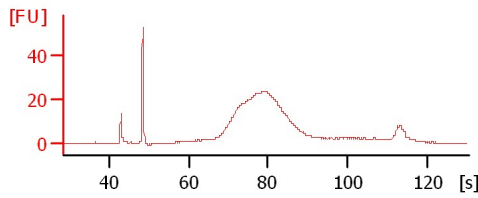
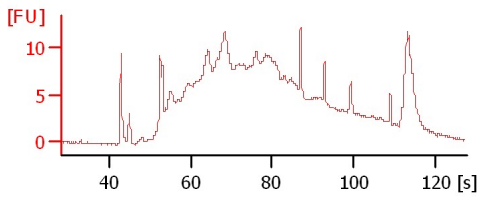
Chip Lot #: Reagent Kit Lot #: Chip Comments:



CRIL2

cAL labchip-2

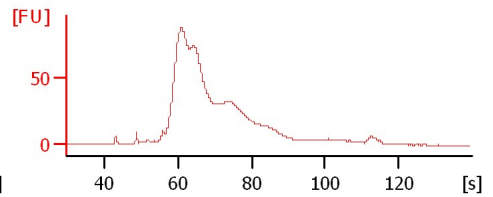
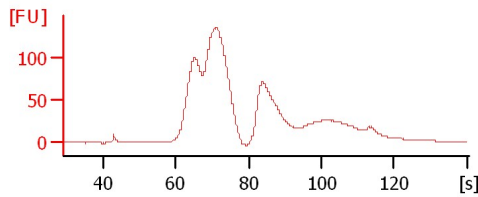
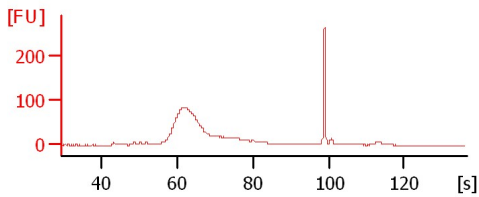
EG-Hiseq



TH1

TH2

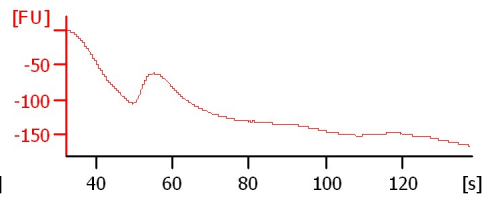
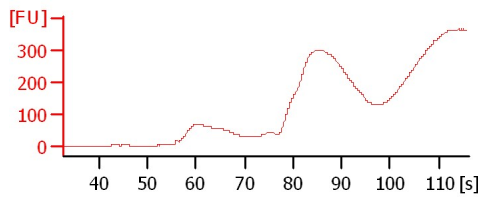
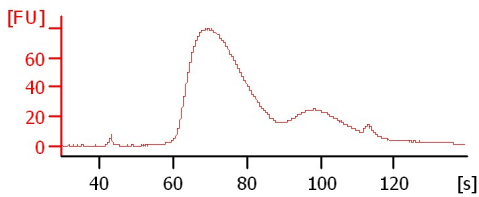
TH3



TH4

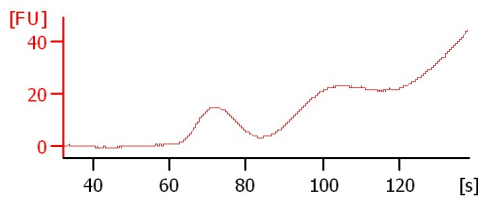
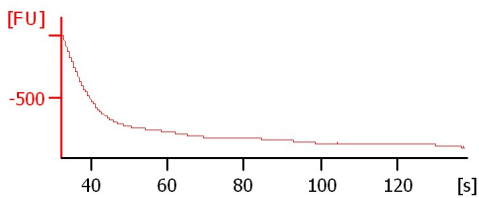
TH5

TH6



TH8

TH7



Assay Class: High Sensitivity DNA Assay
 Data Path: C:\...ents and Settings\Bioanalyzer\2012-02-29\2012-02-29_002.xad

Created: 2/29/2012 10:38:43 AM
 Modified: 2/29/2012 2:48:23 PM

Electrophoresis File Run Summary (Chip Summary)

Sample Name	Sample Comment	Rest. Digest	Status	Observation	Result Label	Result Color
CRIL2		<input type="checkbox"/>	✓			
cAL labchip-2		<input type="checkbox"/>	✓			
EG-Hiseq		<input type="checkbox"/>	✓			
TH1		<input type="checkbox"/>	✓			
TH2		<input type="checkbox"/>	✓			
TH3		<input type="checkbox"/>	✓			
TH4		<input type="checkbox"/>	✓			
TH5		<input type="checkbox"/>	✓			
TH6		<input type="checkbox"/>	✓			
TH8		<input type="checkbox"/>	✓			
TH7		<input type="checkbox"/>	✓			
Ladder		<input type="checkbox"/>	✓			

Chip Lot #

Reagent Kit Lot #

Chip Comments :

Assay Class: High Sensitivity DNA Assay
Data Path: C:\...ents and Settings\Bioanalyzer\2012-02-29\2012-02-29_002.xad

Created: 2/29/2012 10:38:43 AM
Modified: 2/29/2012 2:48:23 PM

Electrophoresis Assay Details

General Analysis Settings

Number of Available Sample and Ladder Wells (Max.) : 12
Minimum Visible Range [s] : 32
Maximum Visible Range [s] : 138
Start Analysis Time Range [s] : 33
End Analysis Time Range [s] : 137.5
Ladder Concentration [pg/μl] : 1950
Uses Standard Area for Ladder Fragments
Lower Marker Concentration [pg/μl] : 125
Upper Marker Concentration [pg/μl] : 75
Used Upper Marker for Quantitation
Standard Curve Fit is Point to Point
Show Data Aligned to Lower and Upper Marker

Integrator Settings

Integration Start Time [s] : 33.05
Integration End Time [s] : 137
Slope Threshold : 0.8
Height Threshold [FU] : 5
Area Threshold : 0.1
Width Threshold [s] : 0.6
Baseline Plateau [s] : 0.5

Filter Settings

Filter Width [s] : 0.5
Polynomial Order : 4

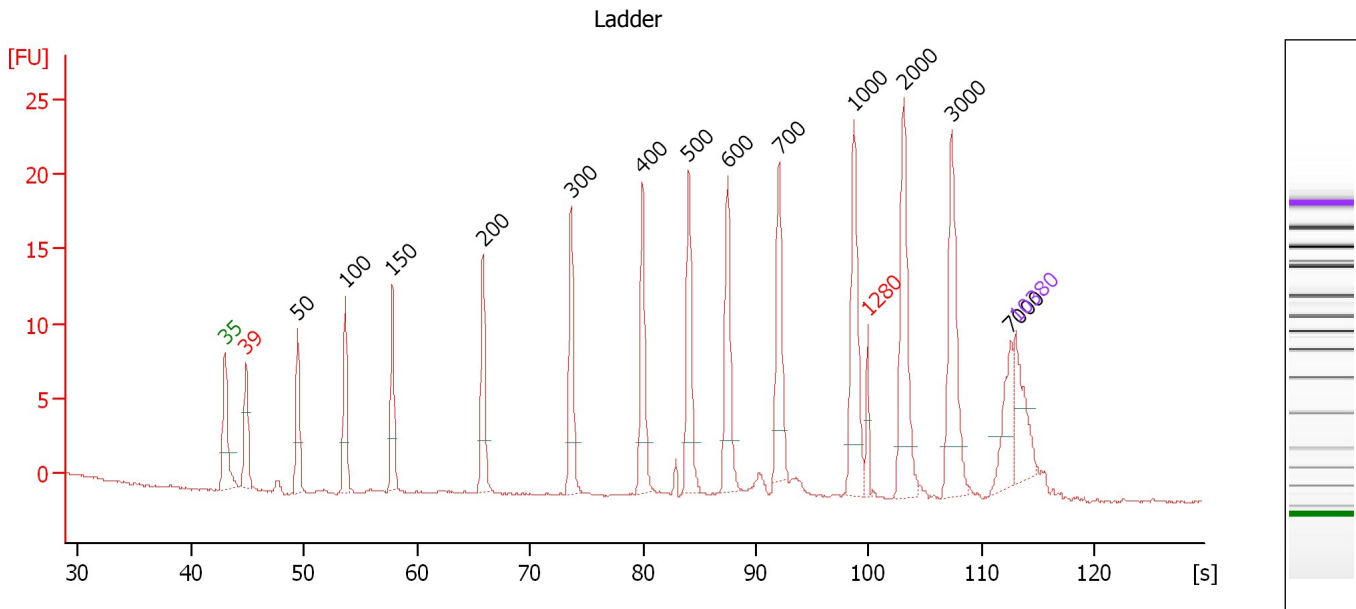
Ladder

Ladder Peak	Size	Area
1	35	160
2	50	210
3	100	208
4	150	221
5	200	242
6	300	270
7	400	305
8	500	306
9	600	336
10	700	321
11	1000	366
12	2000	413
13	3000	411
14	7000	400
15	10380	214

Assay Class: High Sensitivity DNA Assay
 Data Path: C:\...ents and Settings\Bioanalyzer\2012-02-29\2012-02-29_002.xad

Created: 2/29/2012 10:38:43 AM
 Modified: 2/29/2012 2:48:23 PM

Electropherogram Summary



Overall Results for Ladder

Noise: 0.1

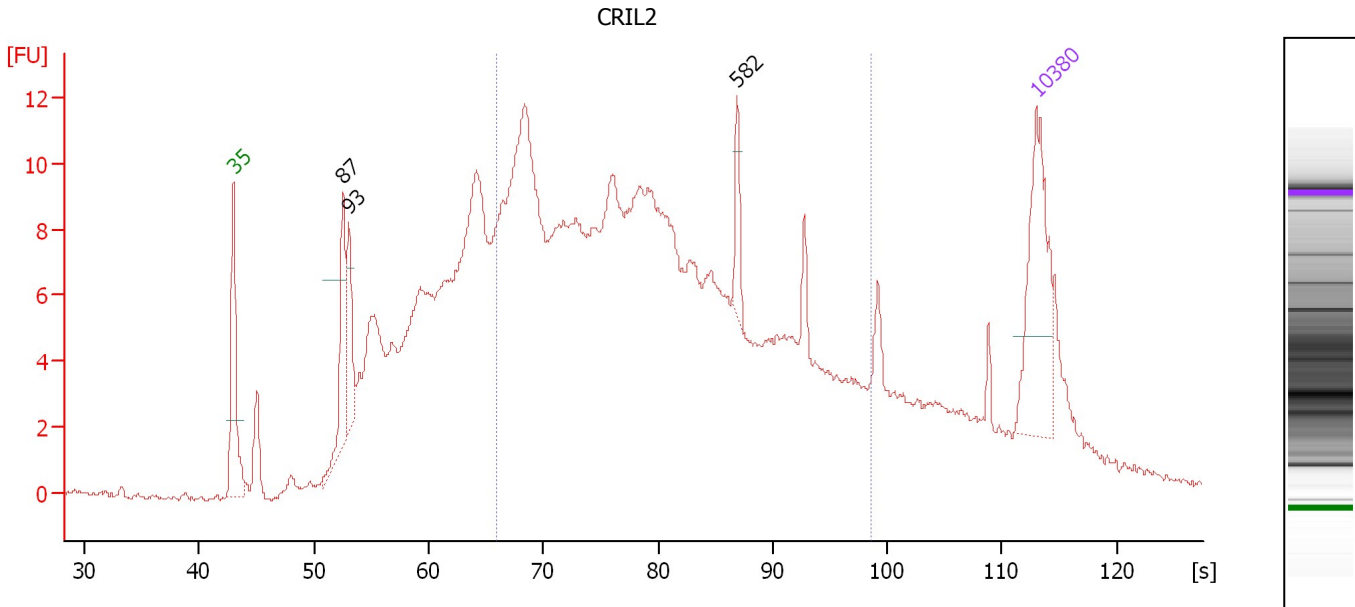
Peak table for Ladder

Peak	Size [bp]	Conc. [pg/μl]	Molarity [pmol/l]	Observations
1	35	125.00	5,411.3	Lower Marker
2	39	0.00	0.0	excluded peak
3	50	150.00	4,545.5	Ladder Peak
4	100	150.00	2,272.7	Ladder Peak
5	150	150.00	1,515.2	Ladder Peak
6	200	150.00	1,136.4	Ladder Peak
7	300	150.00	757.6	Ladder Peak
8	400	150.00	568.2	Ladder Peak
9	500	150.00	454.5	Ladder Peak
10	600	150.00	378.8	Ladder Peak
11	700	150.00	324.7	Ladder Peak
12	1,000	150.00	227.3	Ladder Peak
13	1,280	0.00	0.0	excluded peak
14	2,000	150.00	113.6	Ladder Peak
15	3,000	150.00	75.8	Ladder Peak
16	7,000	150.00	32.5	Ladder Peak
17	10,380	75.00	10.9	Upper Marker

Assay Class: High Sensitivity DNA Assay
 Data Path: C:\...ents and Settings\Bioanalyzer\2012-02-29\2012-02-29_002.xad

Created: 2/29/2012 10:38:43 AM
 Modified: 2/29/2012 2:48:23 PM

Electropherogram Summary Continued ...



Overall Results for sample 1 : CRIL2

Number of peaks found: 3 Corr. Area 1: 273.2
 Noise: 0.1

Peak table for sample 1 : CRIL2

Peak	Size [bp]	Conc. [pg/μl]	Molarity [pmol/l]	Observations
1	35	125.00	5,411.3	Lower Marker
2	87	74.74	1,302.7	
3	93	52.19	849.5	
4	582	21.58	56.2	
5	10,380	75.00	10.9	Upper Marker

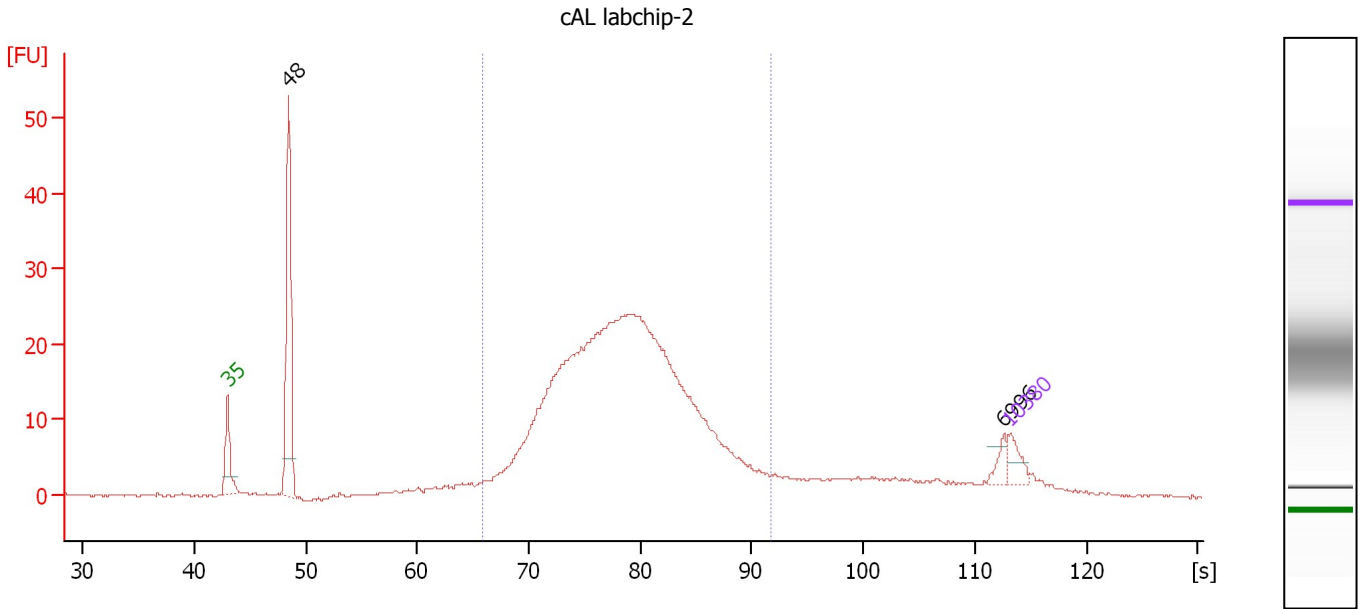
Region table for sample 1 : CRIL2

From [s]	Molarity [pmol/l]	Average Size [bp]	Conc. [pg/μl]	To [s]	Corr. Area	% of Total	Size distribution in CV [%]	Color
65.86	8,375.4	434	1,882.48	98.65	273.2	60	44.7	Blue

Assay Class: High Sensitivity DNA Assay
 Data Path: C:\...ents and Settings\Bioanalyzer\2012-02-29\2012-02-29_002.xad

Created: 2/29/2012 10:38:43 AM
 Modified: 2/29/2012 2:48:23 PM

Electropherogram Summary Continued ...



Overall Results for sample 2 : cAL labchip-2

Number of peaks found: 2 Corr. Area 1: 419.5
 Noise: 0.2

Peak table for sample 2 : cAL labchip-2

Peak	Size [bp]	Conc. [pg/μl]	Molarity [pmol/l]	Observations
1	35	125.00	5,411.3	Lower Marker
2	48	1,023.18	32,474.8	
3	6,996	53.22	11.5	
4	10,380	75.00	10.9	Upper Marker

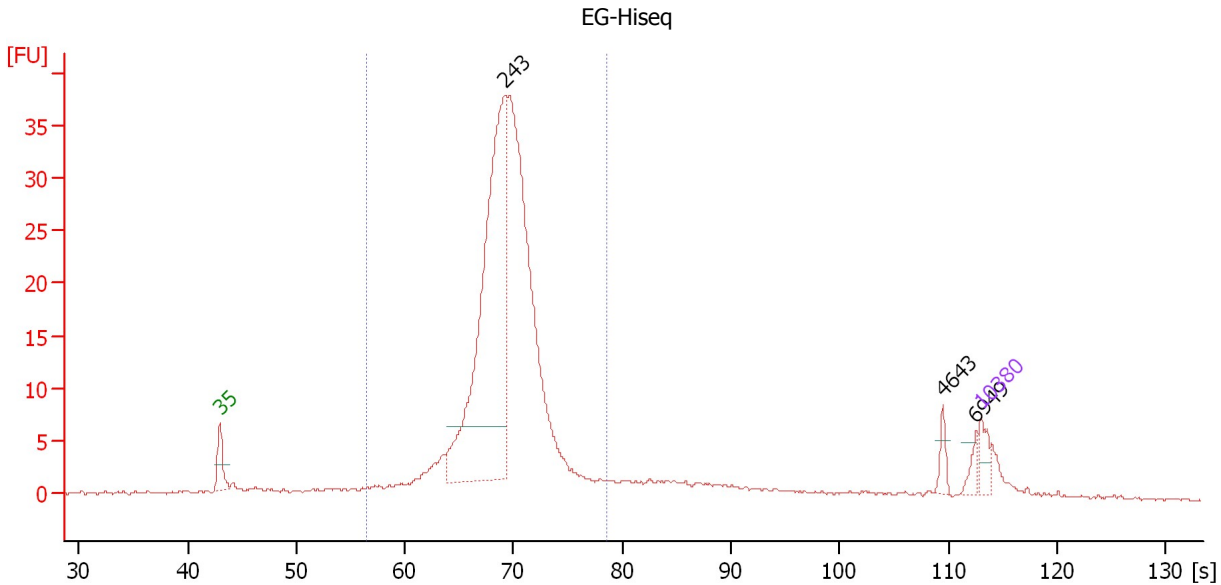
Region table for sample 2 : cAL labchip-2

From [s]	Molarity [pmol/l]	Average Size [bp]	Conc. [pg/μl]	To [s]	Corr. Area	% of Total	Size distribution in CV [%]	Color
65.86	25,771.8	392	6,082.06	91.63	419.5	77	26.6	Blue

Assay Class: High Sensitivity DNA Assay
 Data Path: C:\...ents and Settings\Bioanalyzer\2012-02-29\2012-02-29_002.xad

Created: 2/29/2012 10:38:43 AM
 Modified: 2/29/2012 2:48:23 PM

Electropherogram Summary Continued ...



Overall Results for sample 3 : EG-Hiseq

Number of peaks found: 3 Corr. Area 1: 304.5
 Noise: 0.1

Peak table for sample 3 : EG-Hiseq

Peak	Size [bp]	Conc. [pg/μl]	Molarity [pmol/l]	Observations
1	35	125.00	5,411.3	Lower Marker
2	243	2,823.84	17,632.6	
3	4,643	57.05	18.6	
4	6,949	50.47	11.0	
5	10,380	75.00	10.9	Upper Marker

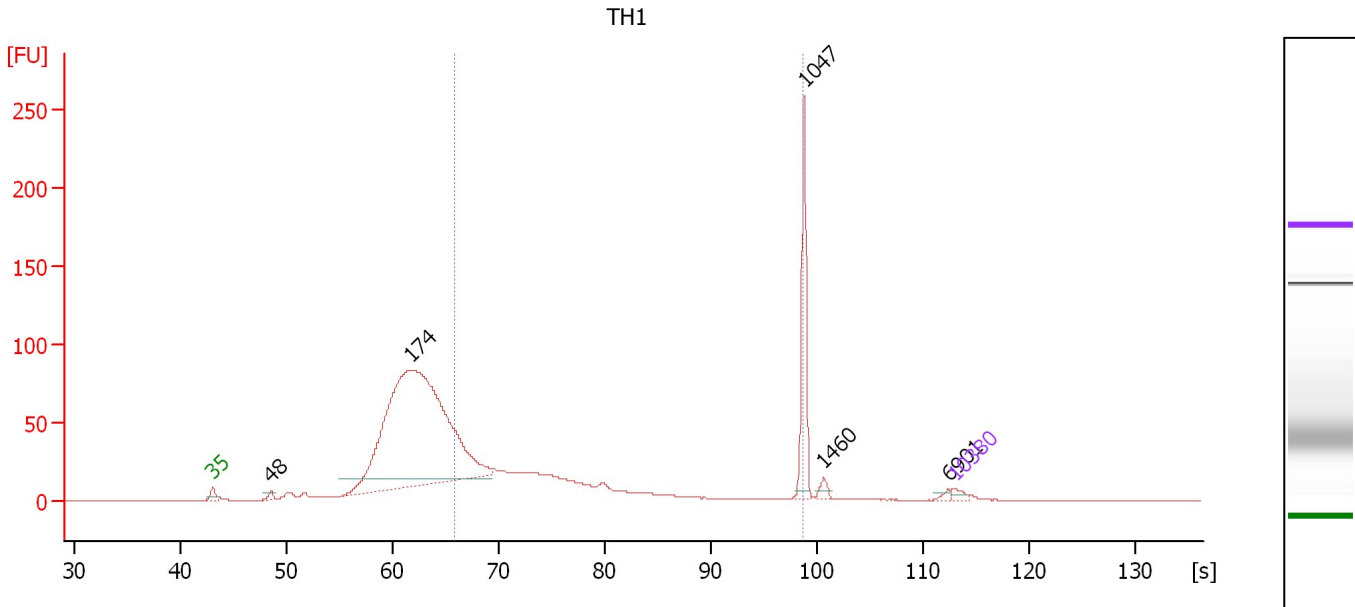
Region table for sample 3 : EG-Hiseq

From [s]	Molarity [pmol/l]	Average Size [bp]	Conc. [pg/μl]	To [s]	Corr. Area	% of Total	Size distribution in CV [%]	Color
56.44	41,486.1	244	6,525.65	78.50	304.5	83	14.7	Blue

Assay Class: High Sensitivity DNA Assay
 Data Path: C:\...ents and Settings\Bioanalyzer\2012-02-29\2012-02-29_002.xad

Created: 2/29/2012 10:38:43 AM
 Modified: 2/29/2012 2:48:23 PM

Electropherogram Summary Continued ...



Overall Results for sample 4 : TH1

Number of peaks found: 5 Corr. Area 1: 433.3
 Noise: 0.1

Peak table for sample 4 : TH1

Peak	Size [bp]	Conc. [pg/μl]	Molarity [pmol/l]	Observations
1	35	125.00	5,411.3	Lower Marker
2	48	104.10	3,298.0	
3	174	12,840.91	111,525.7	
4	1,047	1,303.95	1,886.2	
5	1,460	104.13	108.0	
6	6,901	47.06	10.3	
7	10,380	75.00	10.9	Upper Marker

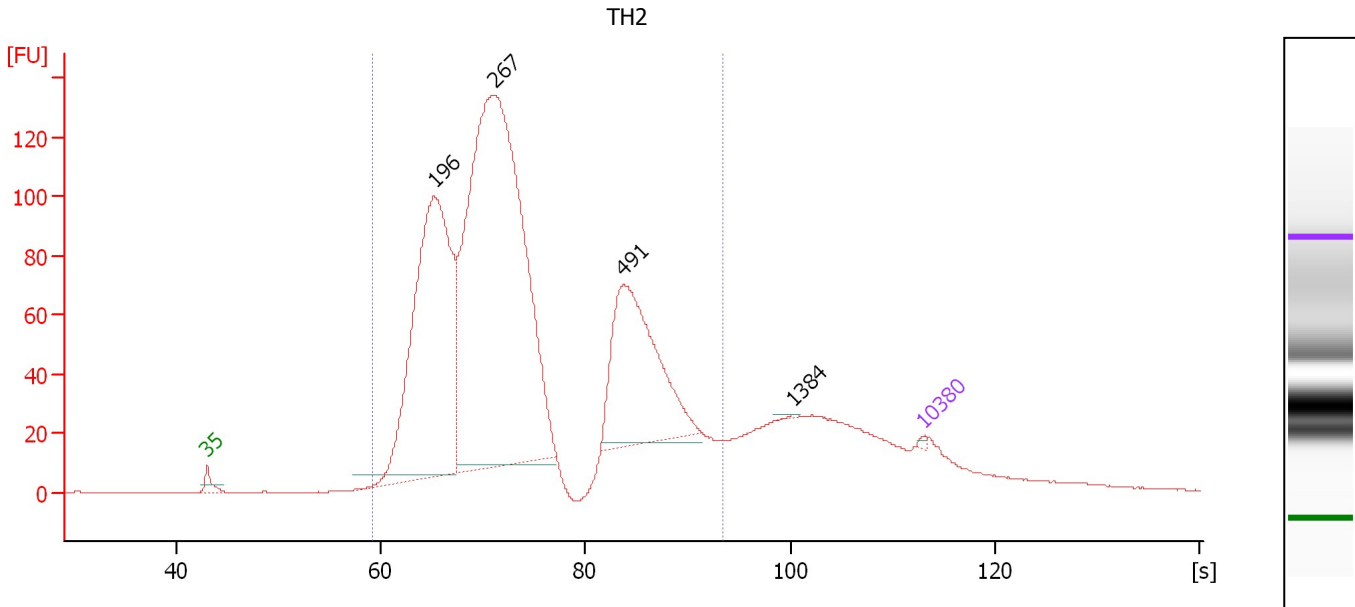
Region table for sample 4 : TH1

From [s]	Molarity [pmol/l]	Average Size [bp]	Conc. [pg/μl]	To [s]	Corr. Area	% of Total	Size distribution in CV [%]	Color
65.86	32,142.3	369	6,084.37	98.65	433.3	30	58.4	Blue

Assay Class: High Sensitivity DNA Assay
 Data Path: C:\...ents and Settings\Bioanalyzer\2012-02-29\2012-02-29_002.xad

Created: 2/29/2012 10:38:43 AM
 Modified: 2/29/2012 2:48:23 PM

Electropherogram Summary Continued ...



Setpoint Deviations for sample 5 : TH2

Height Threshold [FU] : 1

Overall Results for sample 5 : TH2

Number of peaks found: 4
 Noise: 0.1
 Corr. Area 1: 2,358.3

Peak table for sample 5 : TH2

Peak	Size [bp]	Conc. [pg/μl]	Molarity [pmol/l]	Observations
1	35	125.00	5,411.3	Lower Marker
2	196	25,883.66	200,106.2	
3	267	43,485.80	247,219.1	
4	491	10,815.56	33,364.4	
5	1,384	42.05	46.0	
6	10,380	75.00	10.9	Upper Marker

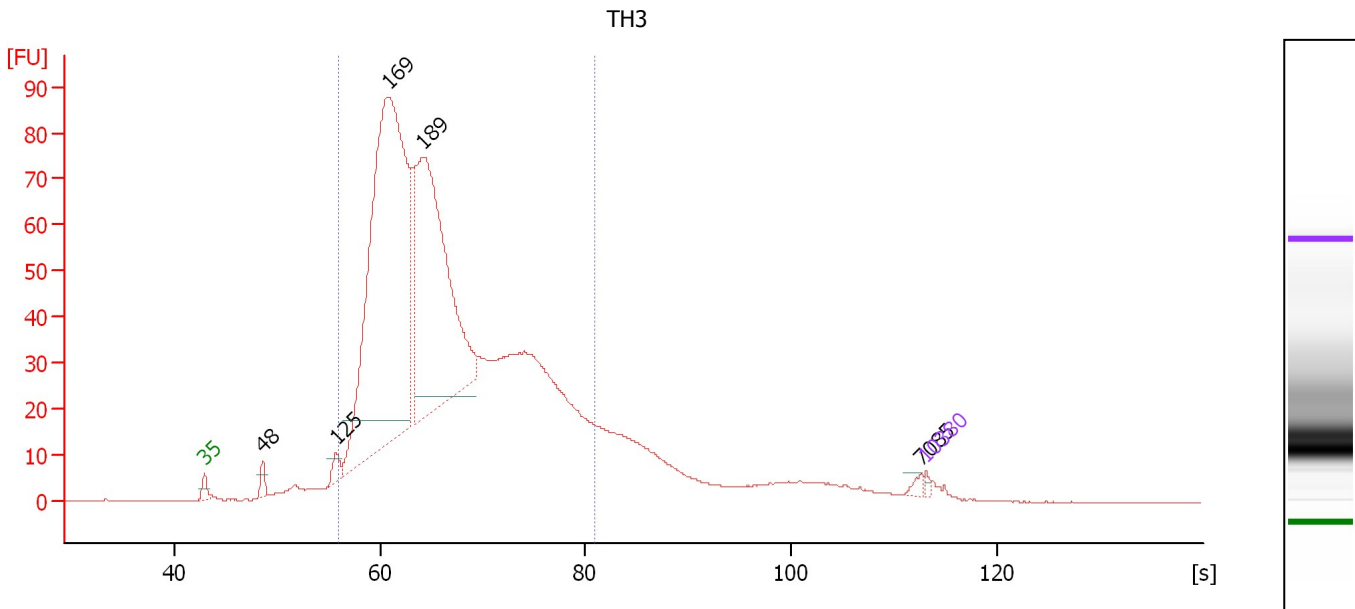
Region table for sample 5 : TH2

From [s]	Molarity [pmol/l]	Average Size [bp]	Conc. [pg/μl]	To [s]	Corr. Area	% of Total	Size distribution in CV [%]	Color
59.16	534,553.9	330	93,674.76	93.42	2,358.3	84	45.0	Blue

Assay Class: High Sensitivity DNA Assay
 Data Path: C:\...ents and Settings\Bioanalyzer\2012-02-29\2012-02-29_002.xad

Created: 2/29/2012 10:38:43 AM
 Modified: 2/29/2012 2:48:23 PM

Electropherogram Summary Continued ...



Overall Results for sample 6 : TH3

Number of peaks found: 5 Corr. Area 1: 1,501.7
 Noise: 0.1

Peak table for sample 6 : TH3

Peak	Size [bp]	Conc. [pg/μl]	Molarity [pmol/l]	Observations
1	35	125.00	5,411.3	Lower Marker
2	48	424.58	13,384.0	
3	125	501.44	6,088.6	
4	169	25,177.64	225,734.5	
5	189	14,781.11	118,221.3	
6	7,085	130.26	27.9	
7	10,380	75.00	10.9	Upper Marker

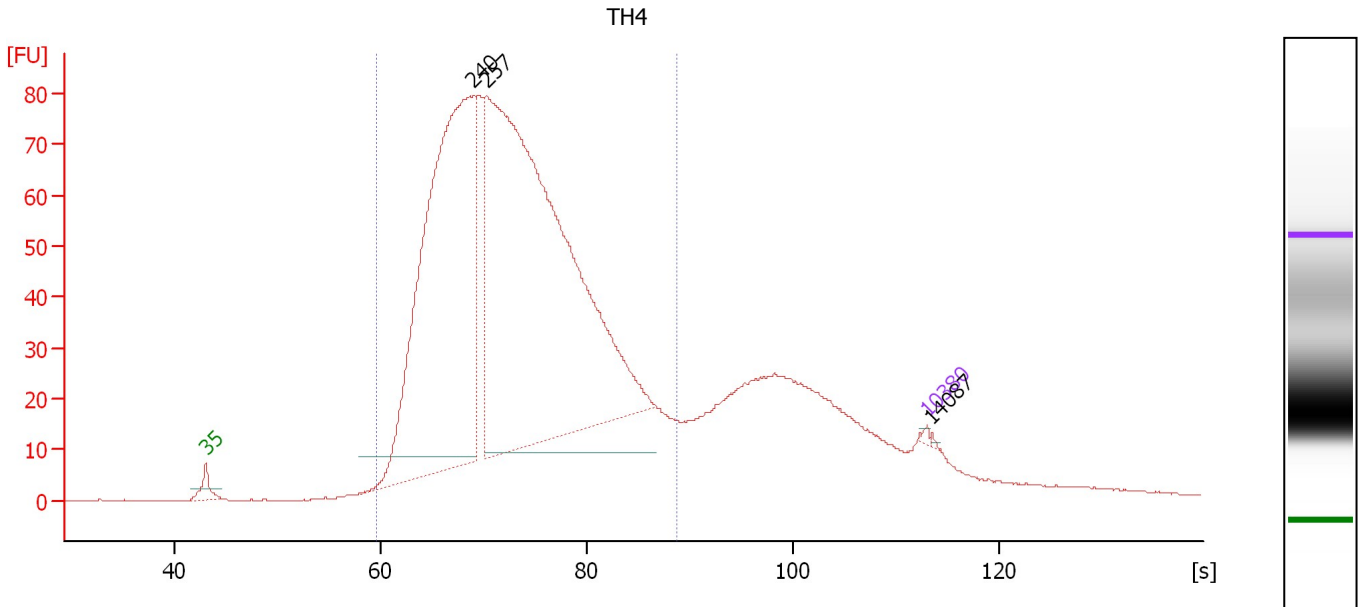
Region table for sample 6 : TH3

From [s]	Molarity [pmol/l]	Average Size [bp]	Conc. [pg/μl]	To [s]	Corr. Area	% of Total	Size distribution in CV [%]	Color
56.07	555,984.1	224	73,913.49	80.96	1,501.7	85	30.9	Blue

Assay Class: High Sensitivity DNA Assay
 Data Path: C:\...ents and Settings\Bioanalyzer\2012-02-29\2012-02-29_002.xad

Created: 2/29/2012 10:38:43 AM
 Modified: 2/29/2012 2:48:23 PM

Electropherogram Summary Continued ...



Setpoint Deviations for sample 7 : TH4

Height Threshold [FU] : 1

Overall Results for sample 7 : TH4

Number of peaks found: 3 Corr. Area 1: 1,797.4
 Noise: 0.1

Peak table for sample 7 : TH4

Peak	Size [bp]	Conc. [pg/μl]	Molarity [pmol/l]	Observations
1	35	125.00	5,411.3	Lower Marker
2	240	30,207.22	190,362.3	
3	257	43,025.68	253,513.2	
4	10,380	75.00	10.9	Upper Marker
5	14,087	0.00	0.0	

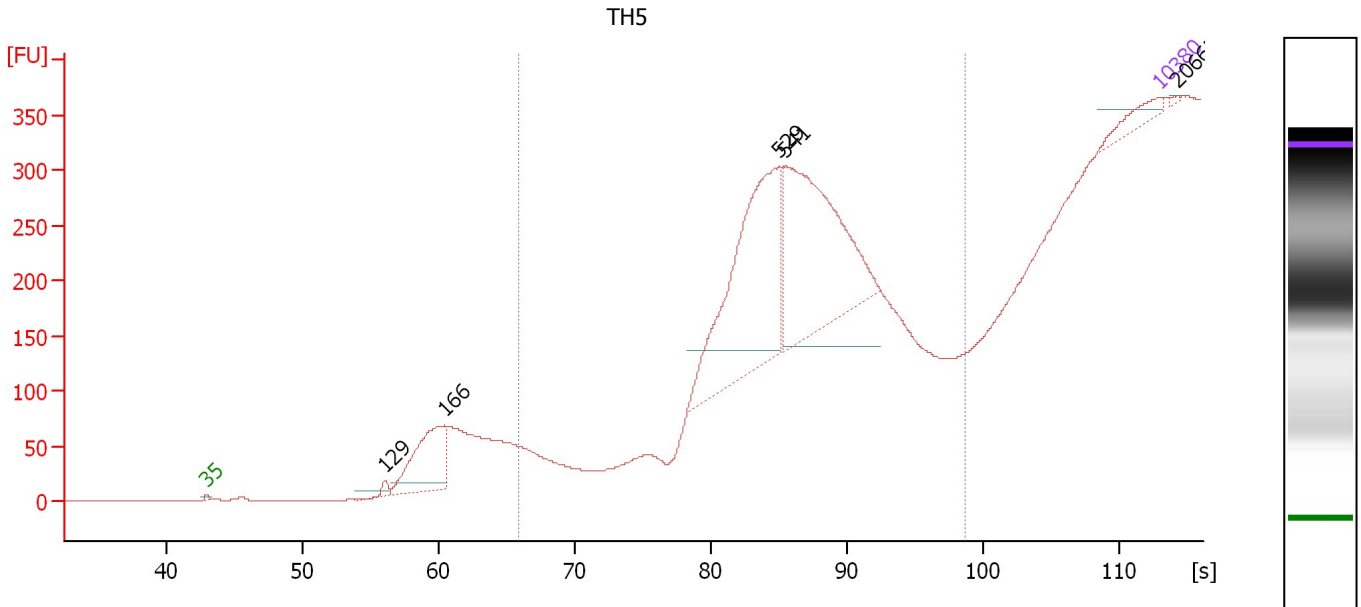
Region table for sample 7 : TH4

From [s]	Molarity [pmol/l]	Average Size [bp]	Conc. [pg/μl]	To [s]	Corr. Area	% of Total	Size distribution in CV [%]	Color
59.58	521,130.5	305	91,565.82	88.83	1,797.4	80	34.0	Blue

Assay Class: High Sensitivity DNA Assay
 Data Path: C:\...ents and Settings\Bioanalyzer\2012-02-29\2012-02-29_002.xad

Created: 2/29/2012 10:38:43 AM
 Modified: 2/29/2012 2:48:23 PM

Electropherogram Summary Continued ...



Overall Results for sample 8 : TH5

Number of peaks found: 5 Corr. Area 1: 496.1
 Noise: 0.1

Peak table for sample 8 : TH5

Peak	Size [bp]	Conc. [pg/μl]	Molarity [pmol/l]	Observations
1	35	125.00	5,411.3	Lower Marker
2	129	42.73	500.8	
3	166	673.80	6,133.1	
4	529	1,597.80	4,579.4	
5	541	1,483.94	4,153.5	
6	10,380	75.00	10.9	Upper Marker
7	20,665	0.00	0.0	

Region table for sample 8 : TH5

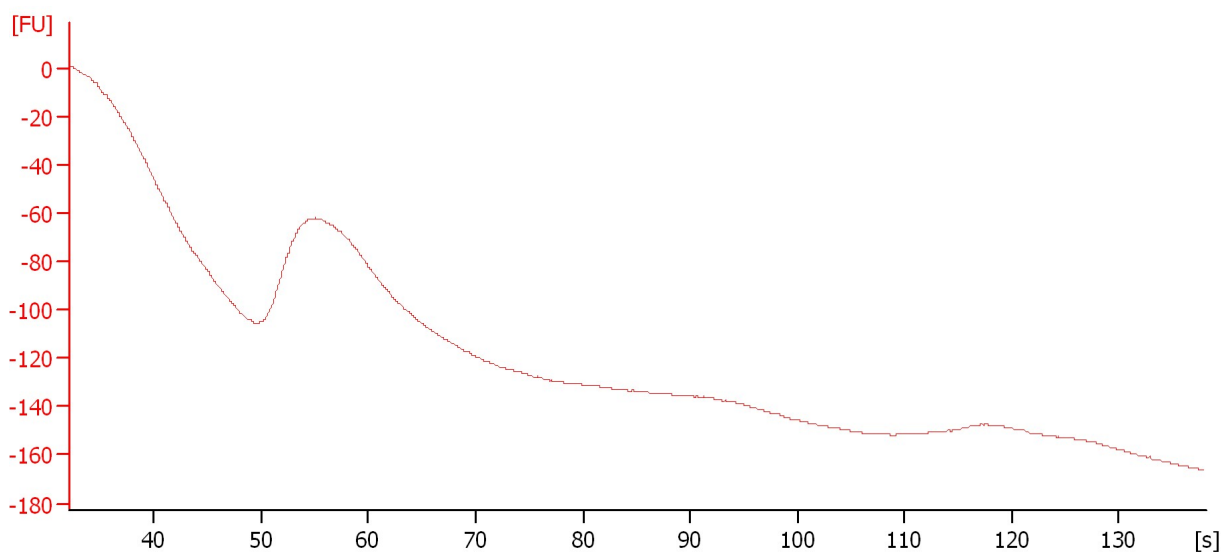
From [s]	Molarity [pmol/l]	Average Size [bp]	Conc. [pg/μl]	To [s]	Corr. Area	% of Total	Size distribution in CV [%]	Color
65.86	2,326.0	539	819.00	98.65	496.1	97	9.2	Blue

Assay Class: High Sensitivity DNA Assay
Data Path: C:\...ents and Settings\Bioanalyzer\2012-02-29\2012-02-29_002.xad

Created: 2/29/2012 10:38:43 AM
Modified: 2/29/2012 2:48:23 PM

Electropherogram Summary Continued ...

TH6



Overall Results for sample 9 : TH6

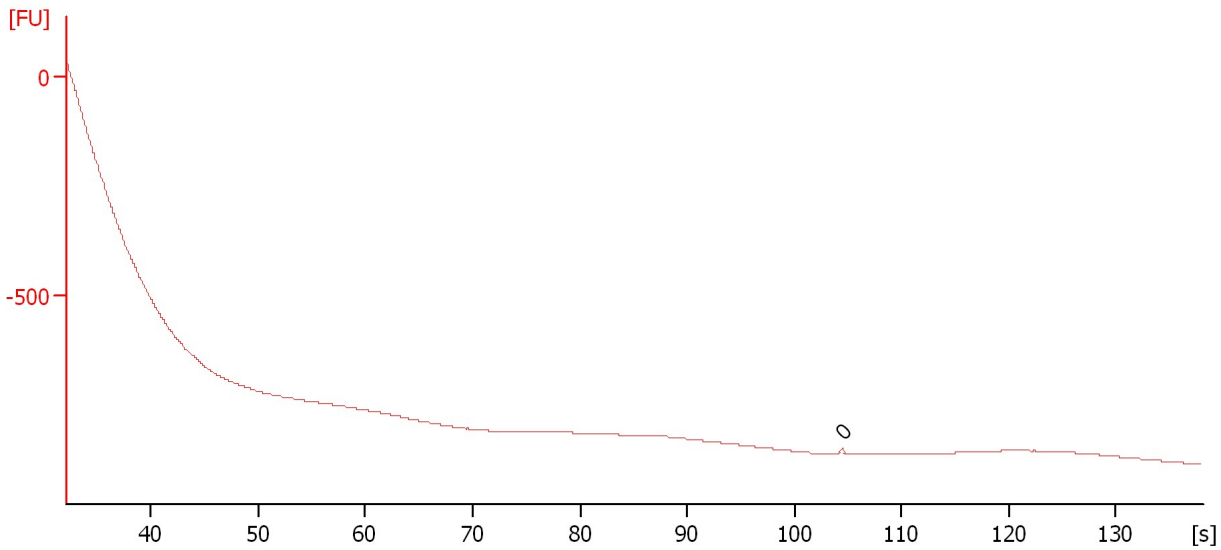
Noise: 0.1

Assay Class: High Sensitivity DNA Assay
Data Path: C:\...ents and Settings\Bioanalyzer\2012-02-29\2012-02-29_002.xad

Created: 2/29/2012 10:38:43 AM
Modified: 2/29/2012 2:48:23 PM

Electropherogram Summary Continued ...

TH8



Overall Results for sample 10 : TH8

Number of peaks found: 0 Noise: 0.2

Peak table for sample 10 : TH8

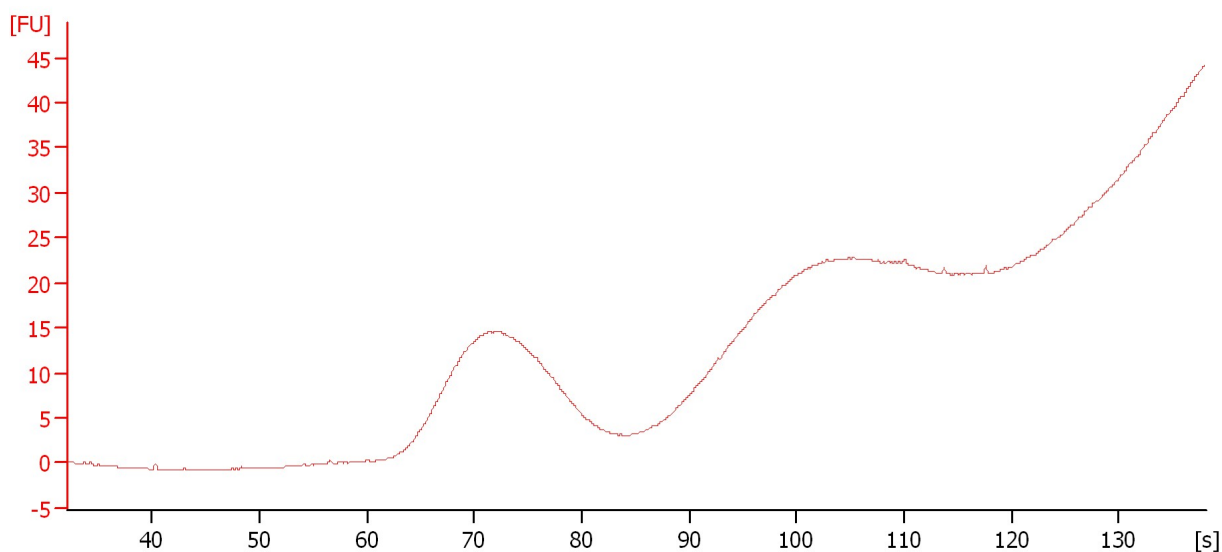
Peak	Size [bp]	Conc. [pg/μl]	Molarity [pmol/l]	Observations
1	0	0.00	0.0	

Assay Class: High Sensitivity DNA Assay
Data Path: C:\...ents and Settings\Bioanalyzer\2012-02-29\2012-02-29_002.xad

Created: 2/29/2012 10:38:43 AM
Modified: 2/29/2012 2:48:23 PM

Electropherogram Summary Continued ...

TH7



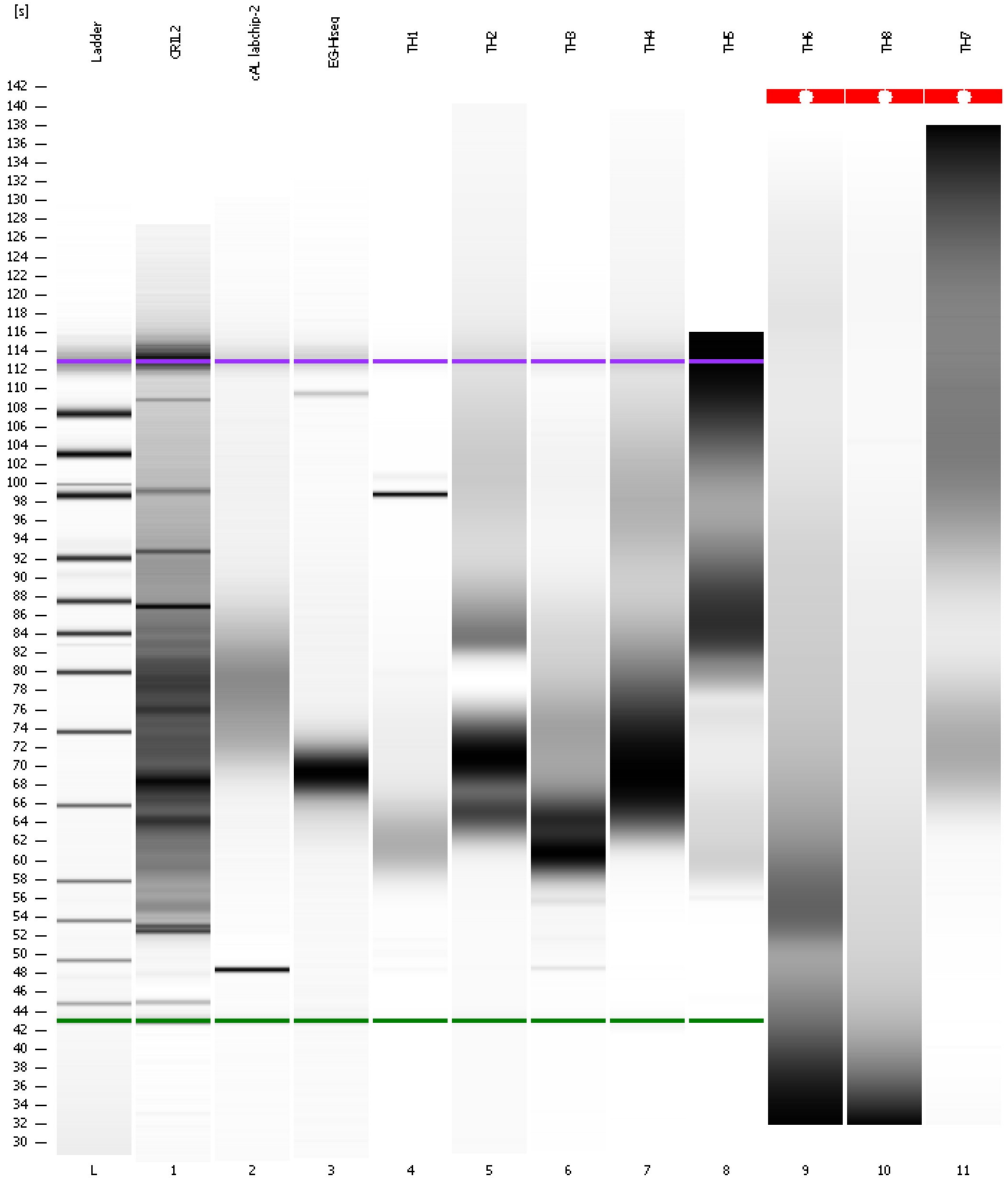
Overall Results for sample 11 : TH7

Noise: 0.1

Assay Class: High Sensitivity DNA Assay
Data Path: C:\...ents and Settings\Bioanalyzer\2012-02-29\2012-02-29_002.xad

Created: 2/29/2012 10:38:43 AM
Modified: 2/29/2012 2:48:23 PM

Gel Image

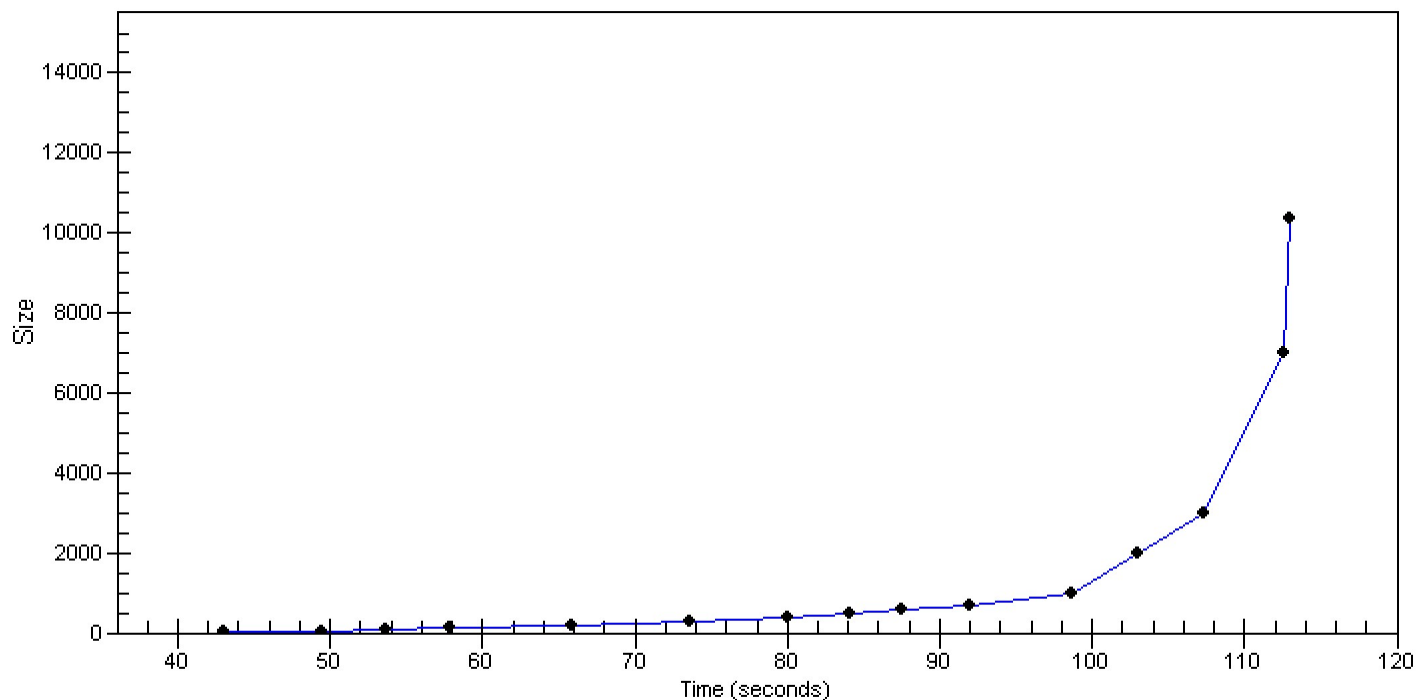


Assay Class: High Sensitivity DNA Assay
Data Path: C:\...ents and Settings\Bioanalyzer\2012-02-29\2012-02-29_002.xad

Created: 2/29/2012 10:38:43 AM
Modified: 2/29/2012 2:48:23 PM

Curves

Standard Curve



Assay Class: High Sensitivity DNA Assay
 Data Path: C:\...ents and Settings\Bioanalyzer\2012-02-29\2012-02-29_002.xad

Created: 2/29/2012 10:38:43 AM
 Modified: 2/29/2012 2:48:23 PM

Run Logbook

Description	Number	Source	Category	Sub Category	Time	Time Zone	User	Host
Run ended on port 1 (Number of wells acquired: 12)		Instrument	Run		2/29/2012 11:20:00 AM	(GMT --08:00) Pacific Standard Time	UC Davis	D8XSMGH1
Run started on port 1 (File: C:\Documents and Settings\Bioanalyzer\2012-02-29\2012-02-29_002.xad)		Instrument	Run		2/29/2012 10:38:48 AM	(GMT --08:00) Pacific Standard Time	UC Davis	D8XSMGH1
Product Number : G2938B		Instrument	Run		2/29/2012 10:38:48 AM	(GMT --08:00) Pacific Standard Time	UC Davis	D8XSMGH1
Name :		Instrument	Run		2/29/2012 10:38:48 AM	(GMT --08:00) Pacific Standard Time	UC Davis	D8XSMGH1
Vendor : Agilent Technologies		Instrument	Run		2/29/2012 10:38:48 AM	(GMT --08:00) Pacific Standard Time	UC Davis	D8XSMGH1
Serial# : DE13701086		Instrument	Run		2/29/2012 10:38:48 AM	(GMT --08:00) Pacific Standard Time	UC Davis	D8XSMGH1
Firmware : C.01.069		Instrument	Run		2/29/2012 10:38:48 AM	(GMT --08:00) Pacific Standard Time	UC Davis	D8XSMGH1
Cartridge : Electrode		Instrument	Run		2/29/2012 10:38:48 AM	(GMT --08:00) Pacific Standard Time	UC Davis	D8XSMGH1