

Assay Class: High Sensitivity DNA Assay
Data Path: C:\...ents and Settings\Bioanalyzer\2012-02-29\2012-02-29_003.xad

Created: 2/29/2012 11:39:35 AM
Modified: 2/29/2012 2:57:03 PM

Electrophoresis File Run Summary

Instrument Information:

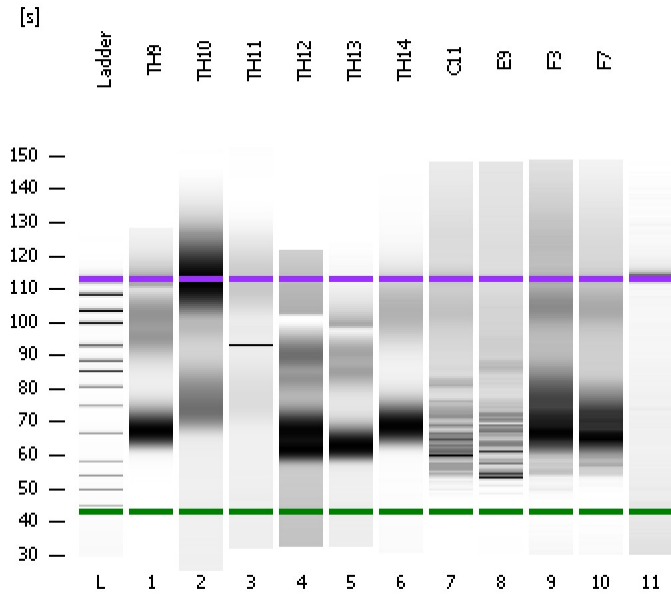
Instrument Name: DE13701086 Firmware: C.01.069
Serial#: DE13701086 Type: G2938B

Assay Information:

Assay Origin Path: C:\Program Files\Agilent\2100 bioanalyzer\2100 expert\assays\dsDNA\High Sensitivity DNA.xsy
Assay Class: High Sensitivity DNA Assay
Version: 1.03
Assay Comments: Copyright © 2003-2010 Agilent Technologies

Chip Information:

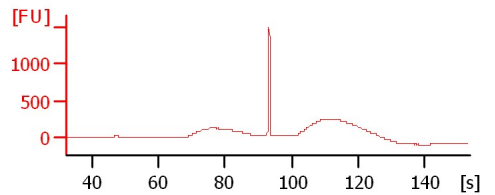
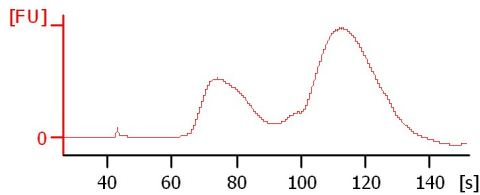
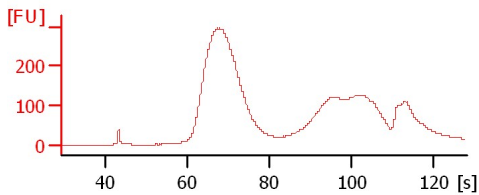
Chip Lot #:
Reagent Kit Lot #:
Chip Comments:



TH9

TH10

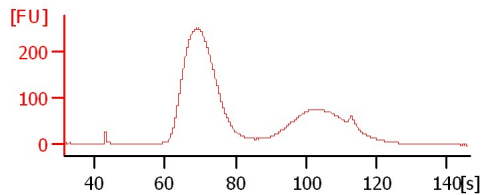
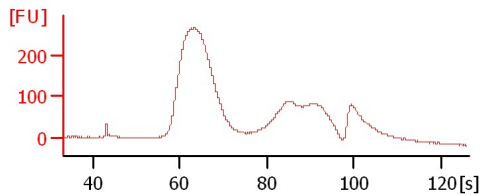
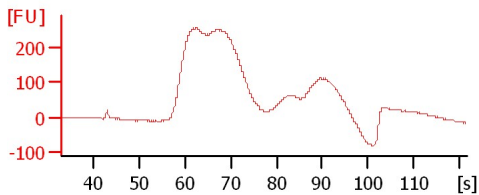
TH11



TH12

TH13

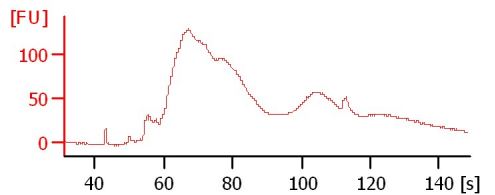
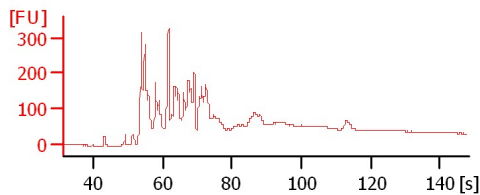
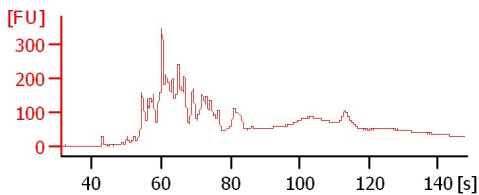
TH14



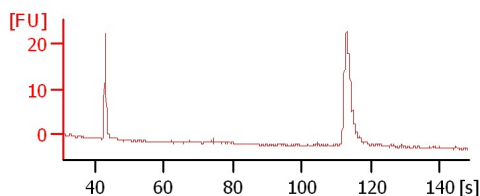
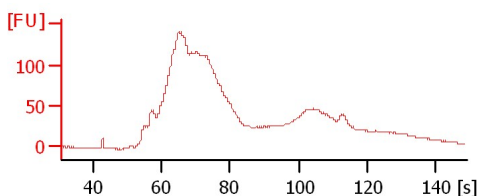
C11

E9

F3



F7



Assay Class: High Sensitivity DNA Assay
Data Path: C:\...ents and Settings\Bioanalyzer\2012-02-29\2012-02-29_003.xad

Created: 2/29/2012 11:39:35 AM
Modified: 2/29/2012 2:57:03 PM

Electrophoresis File Run Summary (Chip Summary)

Sample Name	Sample Comment	Rest. Digest	Status	Observation	Result Label	Result Color
TH9		<input type="checkbox"/>	✓			
TH10		<input type="checkbox"/>	✓			
TH11		<input type="checkbox"/>	✓			
TH12		<input type="checkbox"/>	✓			
TH13		<input type="checkbox"/>	✓			
TH14		<input type="checkbox"/>	✓			
C11		<input type="checkbox"/>	✓			
E9		<input type="checkbox"/>	✓			
F3		<input type="checkbox"/>	✓			
F7		<input type="checkbox"/>	✓			
Ladder		<input type="checkbox"/>	✓			

Chip Lot #

Reagent Kit Lot #

Chip Comments :

Assay Class: High Sensitivity DNA Assay
 Data Path: C:\...ents and Settings\Bioanalyzer\2012-02-29\2012-02-29_003.xad

Created: 2/29/2012 11:39:35 AM
 Modified: 2/29/2012 2:57:03 PM

Electrophoresis Assay Details

General Analysis Settings

Number of Available Sample and Ladder Wells (Max.) : 12
 Minimum Visible Range [s] : 32
 Maximum Visible Range [s] : 138
 Start Analysis Time Range [s] : 33
 End Analysis Time Range [s] : 137.5
 Ladder Concentration [pg/μl] : 1950
 Uses Standard Area for Ladder Fragments
 Lower Marker Concentration [pg/μl] : 125
 Upper Marker Concentration [pg/μl] : 75
 Used Upper Marker for Quantitation
 Standard Curve Fit is Point to Point
 Show Data Aligned to Lower and Upper Marker

Integrator Settings

Integration Start Time [s] : 33.05
 Integration End Time [s] : 137
 Slope Threshold : 0.8
 Height Threshold [FU] : 5
 Area Threshold : 0.1
 Width Threshold [s] : 0.6
 Baseline Plateau [s] : 0.5

Filter Settings

Filter Width [s] : 0.5
 Polynomial Order : 4

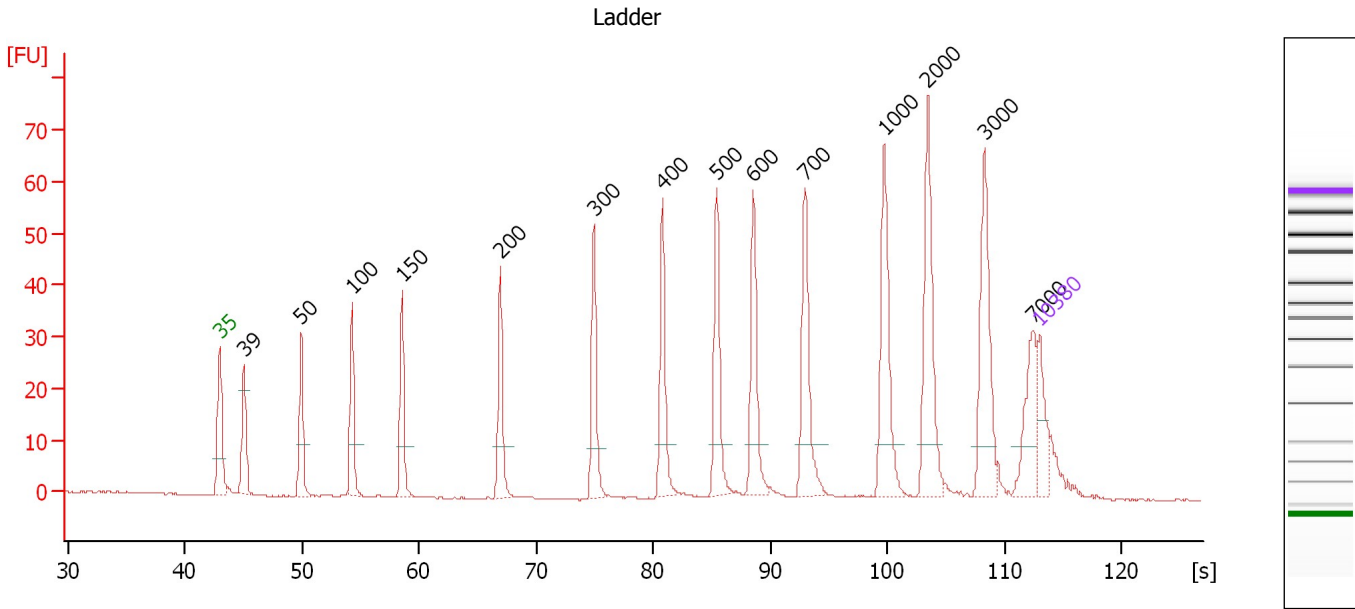
Ladder

Ladder Peak	Size	Area
1	35	160
2	50	210
3	100	208
4	150	221
5	200	242
6	300	270
7	400	305
8	500	306
9	600	336
10	700	321
11	1000	366
12	2000	413
13	3000	411
14	7000	400
15	10380	214

Assay Class: High Sensitivity DNA Assay
 Data Path: C:\...ents and Settings\Bioanalyzer\2012-02-29\2012-02-29_003.xad

Created: 2/29/2012 11:39:35 AM
 Modified: 2/29/2012 2:57:03 PM

Electropherogram Summary



Overall Results for Ladder

Noise: 0.1

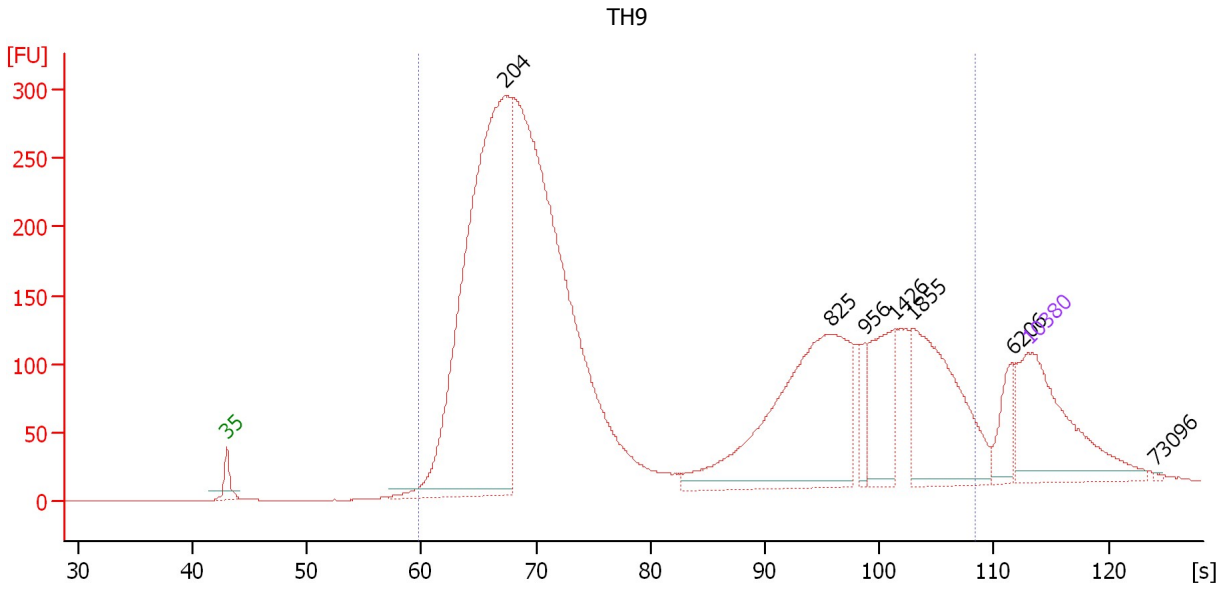
Peak table for Ladder

Peak	Size [bp]	Conc. [pg/µl]	Molarity [pmol/l]	Observations
1	35	125.00	5,411.3	Lower Marker
2	39	0.00	0.0	
3	50	150.00	4,545.5	Ladder Peak
4	100	150.00	2,272.7	Ladder Peak
5	150	150.00	1,515.2	Ladder Peak
6	200	150.00	1,136.4	Ladder Peak
7	300	150.00	757.6	Ladder Peak
8	400	150.00	568.2	Ladder Peak
9	500	150.00	454.5	Ladder Peak
10	600	150.00	378.8	Ladder Peak
11	700	150.00	324.7	Ladder Peak
12	1,000	150.00	227.3	Ladder Peak
13	2,000	150.00	113.6	Ladder Peak
14	3,000	150.00	75.8	Ladder Peak
15	7,000	150.00	32.5	Ladder Peak
16	10,380	75.00	10.9	Upper Marker

Assay Class: High Sensitivity DNA Assay
 Data Path: C:\...ents and Settings\Bioanalyzer\2012-02-29\2012-02-29_003.xad

Created: 2/29/2012 11:39:35 AM
 Modified: 2/29/2012 2:57:03 PM

Electropherogram Summary Continued ...



Overall Results for sample 1 : TH9

Number of peaks found: 7 Corr. Area 1: 6,088.7
 Noise: 0.2

Peak table for sample 1 : TH9

Peak	Size [bp]	Conc. [pg/μl]	Molarity [pmol/l]	Observations
1	35	125.00	5,411.3	Lower Marker
2	204	568.94	4,219.8	
3	825	196.68	361.0	
4	956	13.67	21.7	
5	1,426	49.26	52.3	
6	1,855	92.71	75.7	
7	6,206	18.85	4.6	
8	10,380	75.00	10.9	Upper Marker
9	73,096	0.00	0.0	

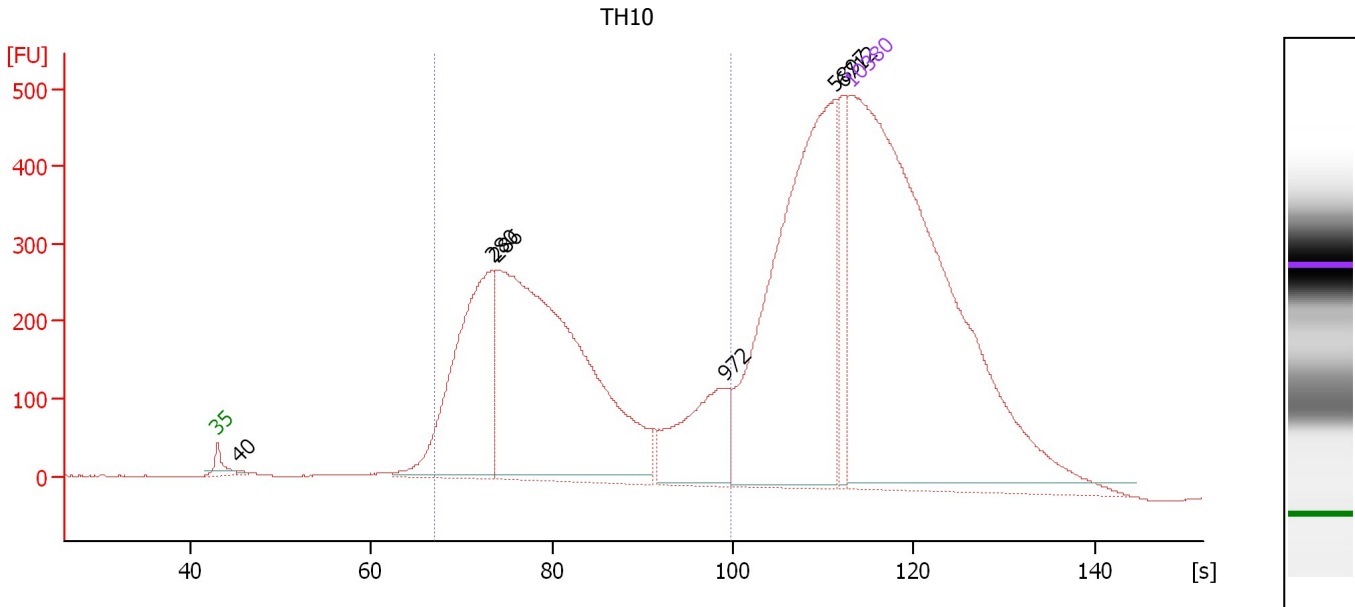
Region table for sample 1 : TH9

From [s]	Molarity [pmol/l]	Average Size [bp]	Conc. [pg/μl]	To [s]	Corr. Area	% of Total	Size distribution in CV [%]	Color
59.84	8,831.4	651	1,577.06	108.37	6,088.7	97	100.0	Blue

Assay Class: High Sensitivity DNA Assay
 Data Path: C:\...ents and Settings\Bioanalyzer\2012-02-29\2012-02-29_003.xad

Created: 2/29/2012 11:39:35 AM
 Modified: 2/29/2012 2:57:03 PM

Electropherogram Summary Continued ...



Overall Results for sample 2 : TH10

Number of peaks found: 6 Corr. Area 1: 5,839.1
 Noise: 0.6

Peak table for sample 2 : TH10

Peak	Size [bp]	Conc. [pg/μl]	Molarity [pmol/l]	Observations
1	35	125.00	5,411.3	Lower Marker
2	40	0.35	13.3	
3	280	37.10	200.7	
4	286	84.15	445.7	
5	972	12.32	19.2	
6	5,897	49.02	12.6	
7	6,712	6.43	1.5	
8	10,380	75.00	10.9	Upper Marker

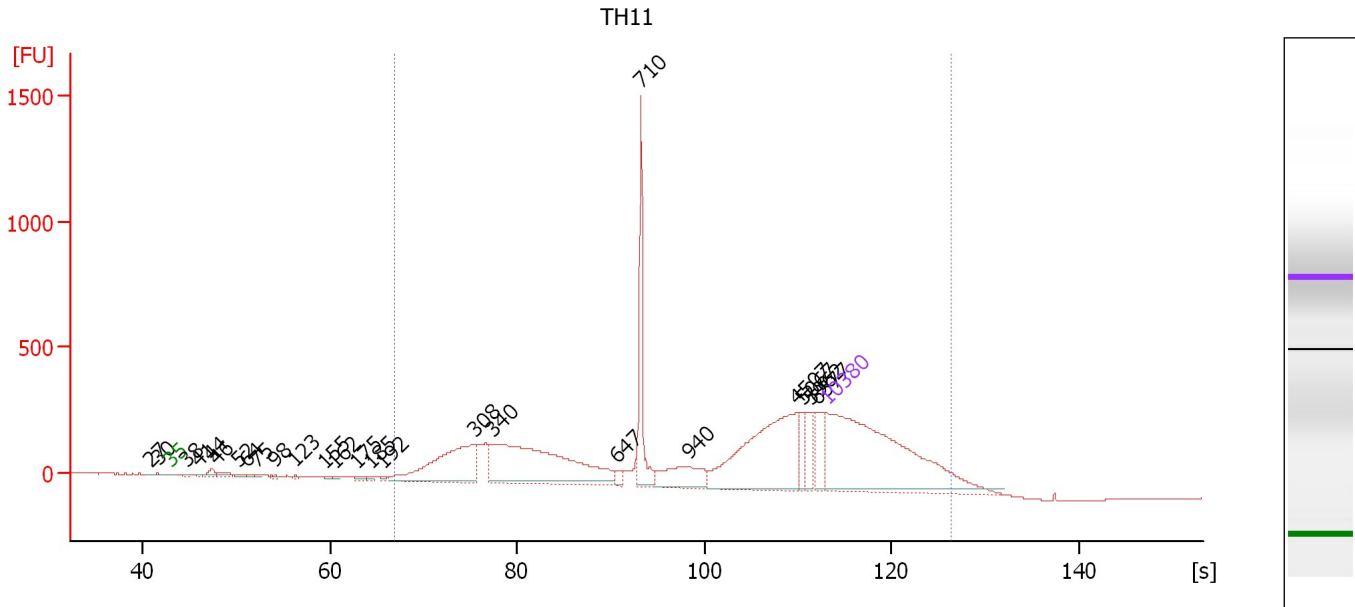
Region table for sample 2 : TH10

From [s]	Molarity [pmol/l]	Average Size [bp]	Conc. [pg/μl]	To [s]	Corr. Area	% of Total	Size distribution in CV [%]	Color
66.94	552.1	437	126.57	99.74	5,839.1	58	46.9	Blue

Assay Class: High Sensitivity DNA Assay
 Data Path: C:\...ents and Settings\Bioanalyzer\2012-02-29\2012-02-29_003.xad

Created: 2/29/2012 11:39:35 AM
 Modified: 2/29/2012 2:57:03 PM

Electropherogram Summary Continued ...



Overall Results for sample 3 : TH11

Number of peaks found: 25 Corr. Area 1: 6,536.4
 Noise: 0.3

Peak table for sample 3 : TH11

Peak	Size [bp]	Conc. [pg/μl]	Molarity [pmol/l]	Observations
1	27	0.00	0.0	
2	30	0.00	0.0	
3	35	125.00	5,411.3	Lower Marker
4	38	0.62	24.6	
5	41	0.64	23.6	
6	44	3.08	105.4	
7	46	2.97	98.5	
8	52	1.47	43.0	
9	64	0.91	21.6	
10	75	0.95	19.3	
11	98	0.86	13.4	
12	123	0.79	9.8	
13	155	0.81	7.9	
14	162	0.91	8.5	
15	175	1.21	10.4	
16	185	1.01	8.3	
17	192	0.90	7.1	
18	308	43.82	215.8	
19	340	81.67	364.3	
20	647	1.80	4.2	
21	710	26.42	56.4	
22	940	13.86	22.3	
23	4,507	50.71	17.0	
24	5,067	6.11	1.8	
25	5,962	7.57	1.9	
26	6,577	8.51	2.0	

Assay Class: High Sensitivity DNA Assay
Data Path: C:\...ents and Settings\Bioanalyzer\2012-02-29\2012-02-29_003.xad

Created: 2/29/2012 11:39:35 AM
Modified: 2/29/2012 2:57:03 PM

Electropherogram Summary Continued ...**... Peak table for sample 3 : TH11**

Peak	Size [bp]	Conc. [pg/μl]	Molarity [pmol/l]	Observations
27	▶ 10,380	75.00	10.9	Upper Marker

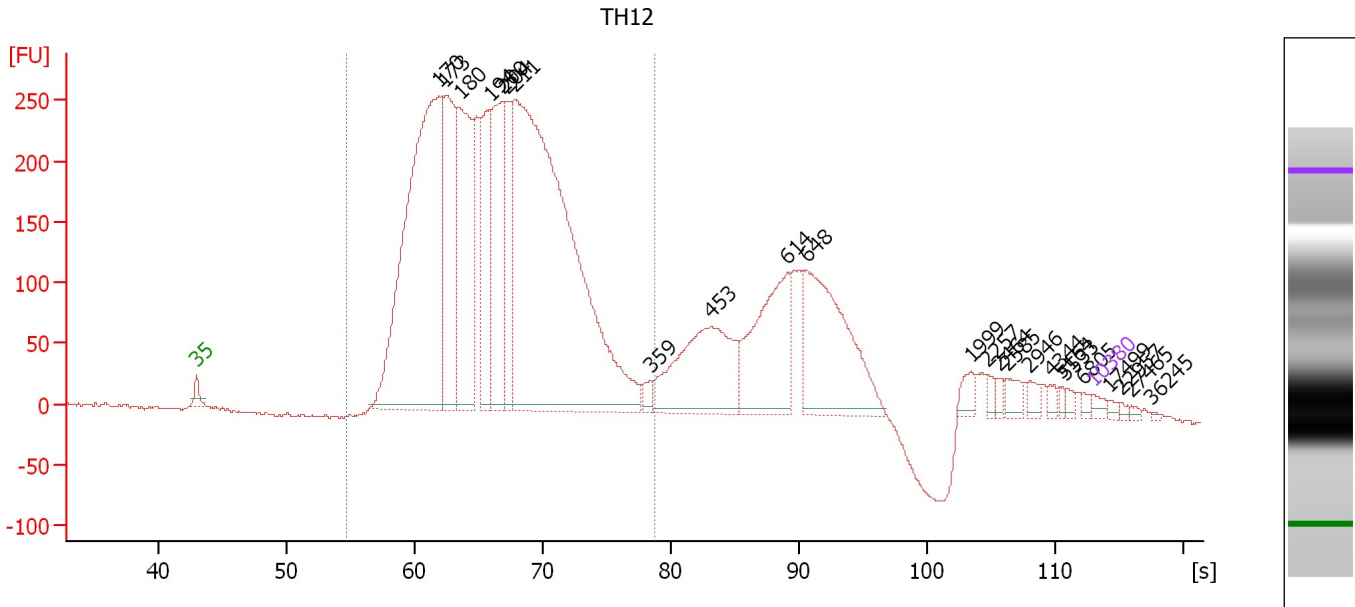
Region table for sample 3 : TH11

From [s]	Molarity [pmol/l]	Average Size [bp]	Conc. [pg/μl]	To [s]	Corr. Area	% of Total	Size distribution in CV [%]	Color
66.94	674.5	13,606	245.10	126.38	6,536.4	94	100.0	■

Assay Class: High Sensitivity DNA Assay
 Data Path: C:\...ents and Settings\Bioanalyzer\2012-02-29\2012-02-29_003.xad

Created: 2/29/2012 11:39:35 AM
 Modified: 2/29/2012 2:57:03 PM

Electropherogram Summary Continued ...



Overall Results for sample 4 : TH12

Number of peaks found: 24 Corr. Area 1: 6,008.7
 Noise: 1.1

Peak table for sample 4 : TH12

Peak	Size [bp]	Conc. [pg/μl]	Molarity [pmol/l]	Observations
1	35	125.00	5,411.3	Lower Marker
2	170	10,352.43	92,218.5	
3	173	3,589.57	31,422.8	
4	180	3,948.47	33,270.3	
5	194	2,316.30	18,110.9	
6	200	2,898.80	21,986.4	
7	204	1,622.97	12,040.7	
8	211	14,430.94	103,603.5	
9	359	153.78	648.2	
10	453	2,566.31	8,591.9	
11	614	2,040.37	5,032.9	
12	648	2,712.91	6,347.9	
13	1,999	174.22	132.1	
14	2,257	101.93	68.4	
15	2,464	80.58	49.5	
16	2,585	173.51	101.7	
17	2,946	123.07	63.3	
18	4,344	81.98	28.6	
19	5,164	52.80	15.5	
20	5,533	72.22	19.8	
21	6,805	57.03	12.7	
22	10,380	75.00	10.9	Upper Marker
23	17,499	0.00	0.0	
24	22,957	0.00	0.0	
25	27,465	0.00	0.0	
26	36,245	0.00	0.0	

Assay Class: High Sensitivity DNA Assay
Data Path: C:\...ents and Settings\Bioanalyzer\2012-02-29\2012-02-29_003.xad

Created: 2/29/2012 11:39:35 AM
Modified: 2/29/2012 2:57:03 PM

Electropherogram Summary Continued ...

... Region table for sample 4 :

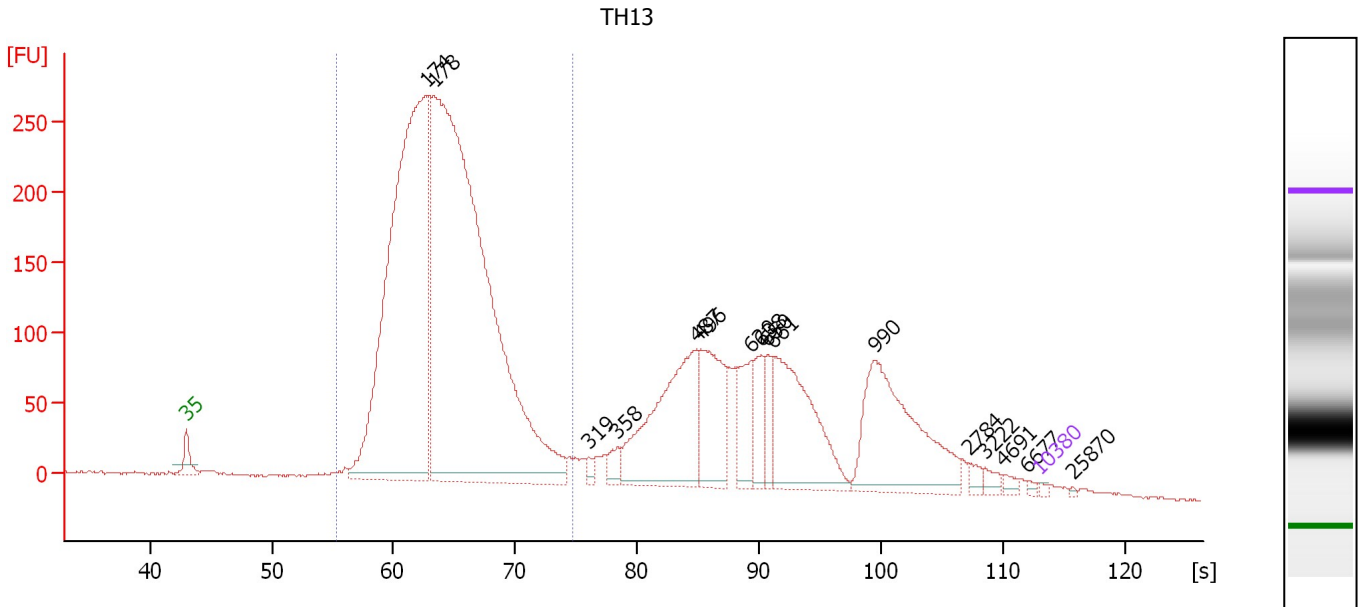
TH12

From [s]	Molarity [pmol/l]	Average Size [bp]	Conc. [pg/μl]	To [s]	Corr. Area % of Total	Size distribution in CV [%]	Color
54.75	312,462.0	207	40,516.21	78.75	6,008.7	75	21.2

Assay Class: High Sensitivity DNA Assay
 Data Path: C:\...ents and Settings\Bioanalyzer\2012-02-29\2012-02-29_003.xad

Created: 2/29/2012 11:39:35 AM
 Modified: 2/29/2012 2:57:03 PM

Electropherogram Summary Continued ...



Overall Results for sample 5 : TH13

Number of peaks found: 16 Corr. Area 1: 4,221.0
 Noise: 1.0

Peak table for sample 5 : TH13

Peak	Size [bp]	Conc. [pg/μl]	Molarity [pmol/l]	Observations
1	35	125.00	5,411.3	Lower Marker
2	174	36,810.56	319,660.6	
3	178	53,106.73	450,995.5	
4	319	316.48	1,501.7	
5	358	716.82	3,030.8	
6	487	8,105.19	25,212.8	
7	496	4,424.16	13,524.5	
8	620	1,929.54	4,717.9	
9	638	1,678.48	3,988.1	
10	650	1,035.83	2,415.6	
11	661	6,318.30	14,489.1	
12	990	6,836.02	10,464.8	
13	2,784	275.59	150.0	
14	3,222	293.06	137.8	
15	4,691	201.91	65.2	
16	6,677	104.32	23.7	
17	10,380	75.00	10.9	Upper Marker
18	25,870	0.00	0.0	

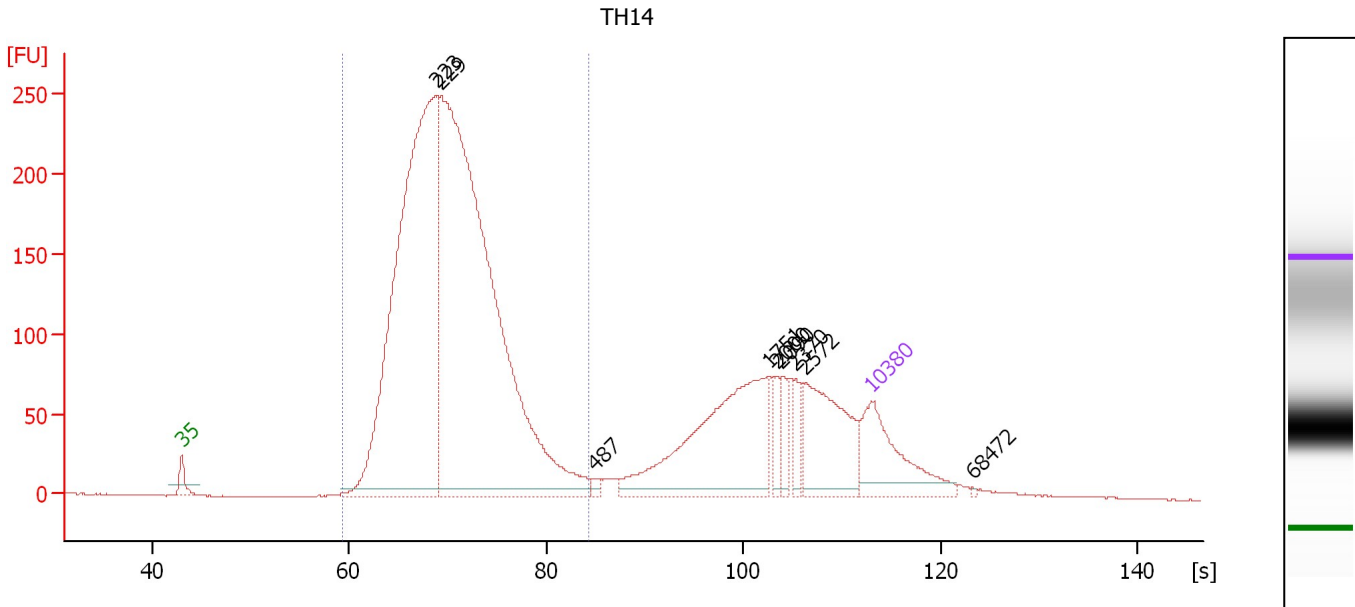
Region table for sample 5 : TH13

From [s]	Molarity [pmol/l]	Average Size [bp]	Conc. [pg/μl]	To [s]	Corr. Area % of Total	Size distribution in CV [%]	Color	
55.40	745,984.8	186	89,804.98	74.67	4,221.0	64	15.0	Blue

Assay Class: High Sensitivity DNA Assay
 Data Path: C:\...ents and Settings\Bioanalyzer\2012-02-29\2012-02-29_003.xad

Created: 2/29/2012 11:39:35 AM
 Modified: 2/29/2012 2:57:03 PM

Electropherogram Summary Continued ...



Overall Results for sample 6 : TH14

Number of peaks found: 9 Corr. Area 1: 3,736.3
 Noise: 0.4

Peak table for sample 6 : TH14

Peak	Size [bp]	Conc. [pg/μl]	Molarity [pmol/l]	Observations
1	35	125.00	5,411.3	Lower Marker
2	223	890.38	6,047.6	
3	229	1,154.11	7,628.7	
4	487	5.09	15.9	
5	1,751	200.90	173.9	
6	2,000	17.38	13.2	
7	2,090	18.47	13.4	
8	2,370	15.37	9.8	
9	2,572	97.71	57.6	
10	10,380	75.00	10.9	Upper Marker
11	68,472	0.00	0.0	

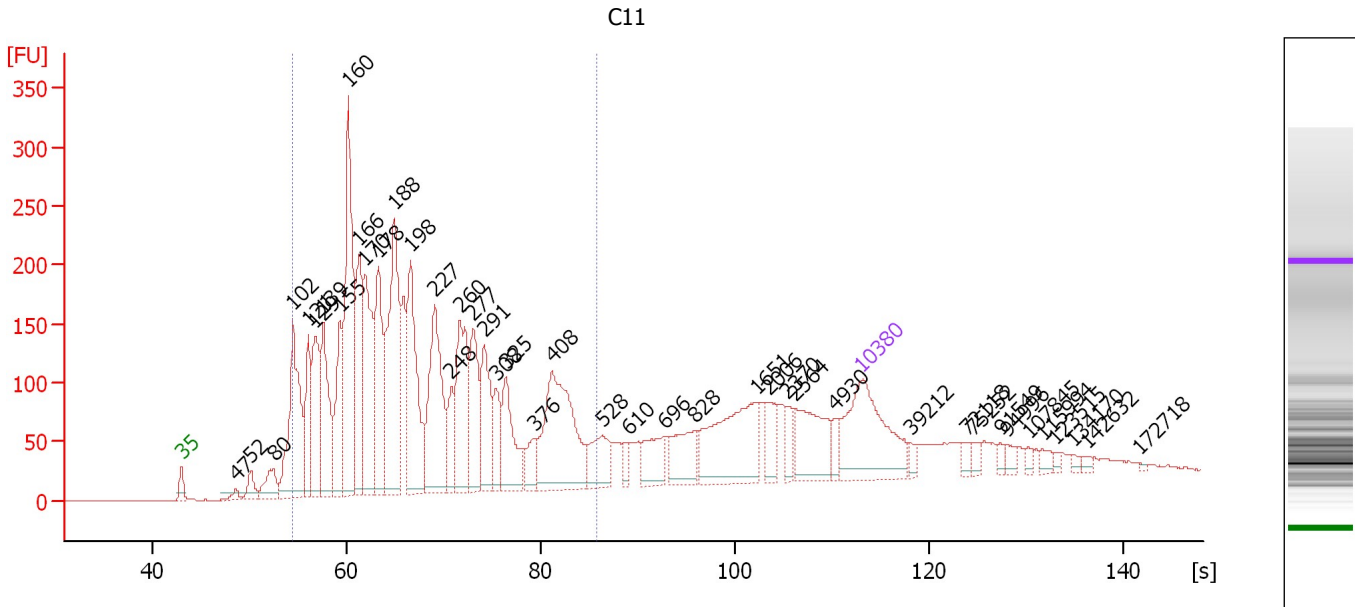
Region table for sample 6 : TH14

From [s]	Molarity [pmol/l]	Average Size [bp]	Conc. [pg/μl]	To [s]	Corr. Area	% of Total	Size distribution in CV [%]	Color
59.36	12,904.6	247	1,989.68	84.40	3,736.3	75	22.6	Blue

Assay Class: High Sensitivity DNA Assay
 Data Path: C:\...ents and Settings\Bioanalyzer\2012-02-29\2012-02-29_003.xad

Created: 2/29/2012 11:39:35 AM
 Modified: 2/29/2012 2:57:03 PM

Electropherogram Summary Continued ...



Overall Results for sample 7 : C11

Number of peaks found: 43 Corr. Area 1: 4,742.2
 Noise: 0.4

Peak table for sample 7 : C11

Peak	Size [bp]	Conc. [pg/μl]	Molarity [pmol/l]	Observations
1	35	125.00	5,411.3	Lower Marker
2	47	6.40	205.5	
3	52	16.74	484.3	
4	80	28.21	536.7	
5	102	149.87	2,228.7	
6	121	62.08	779.4	
7	129	83.89	984.5	
8	139	101.72	1,110.2	
9	155	82.23	806.2	
10	160	194.92	1,848.1	
11	166	96.14	875.5	
12	170	117.48	1,047.0	
13	178	100.26	852.2	
14	188	182.18	1,467.3	
15	198	130.43	998.1	
16	227	128.86	860.2	
17	248	32.12	195.9	
18	260	95.99	560.4	
19	277	63.49	347.5	
20	291	62.91	327.9	
21	308	31.86	156.7	
22	325	55.97	260.9	
23	376	21.75	87.7	
24	408	127.49	473.9	
25	528	33.53	96.3	
26	610	8.32	20.6	

Assay Class: High Sensitivity DNA Assay
 Data Path: C:\...ents and Settings\Bioanalyzer\2012-02-29\2012-02-29_003.xad


Created: 2/29/2012 11:39:35 AM
 Modified: 2/29/2012 2:57:03 PM

Electropherogram Summary Continued ...

... Peak table for sample 7 : C11

Peak	Size [bp]	Conc. [pg/μl]	Molarity [pmol/l]	Observations
27	696	31.29	68.1	
28	828	35.49	64.9	
29	1,651	80.29	73.7	
30	2,006	17.89	13.5	
31	2,370	11.28	7.2	
32	2,564	45.20	26.7	
33	4,930	9.01	2.8	
34	10,380	75.00	10.9	Upper Marker
35	39,212	0.00	0.0	
36	72,118	0.00	0.0	
37	75,252	0.00	0.0	
38	91,549	0.00	0.0	
39	94,996	0.00	0.0	
40	107,845	0.00	0.0	
41	115,994	0.00	0.0	
42	123,515	0.00	0.0	
43	134,170	0.00	0.0	
44	142,632	0.00	0.0	
45	172,718	0.00	0.0	

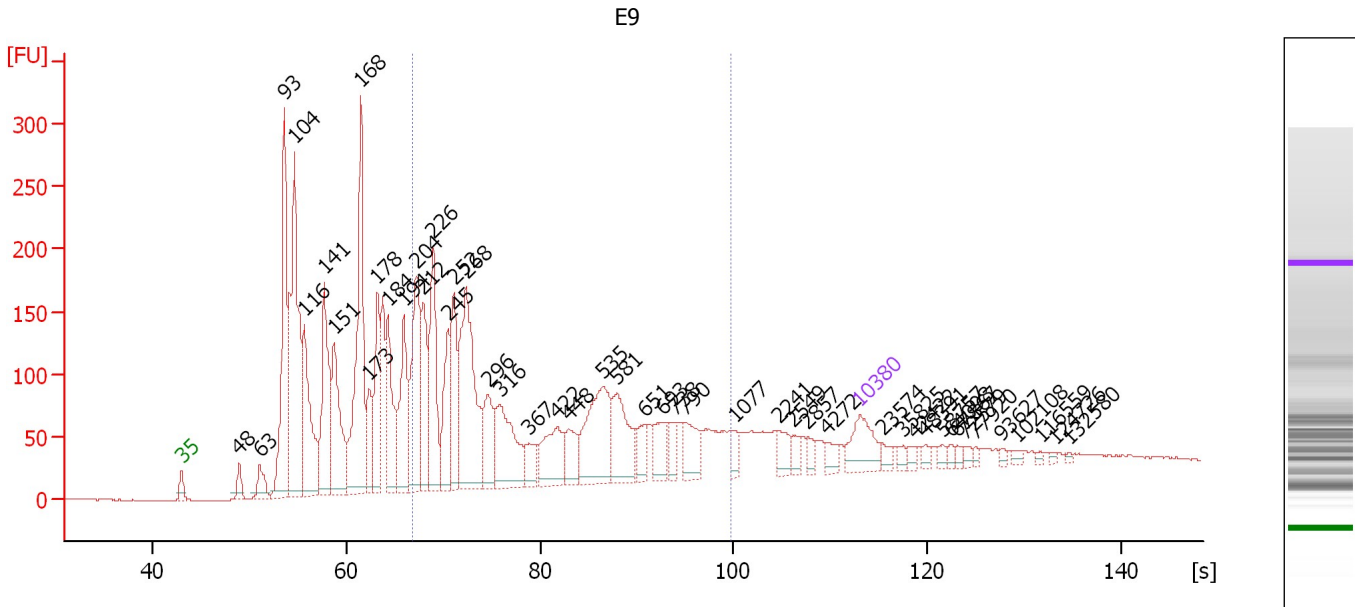
Region table for sample 7 : C11

From [s]	Molarity [pmol/l]	Average Size [bp]	Conc. [pg/μl]	To [s]	Corr. Area	% of Total	Size distribution in CV [%]	Color
54.43	15,296.5	229	1,899.36	85.86	4,742.2	73	41.1	

Assay Class: High Sensitivity DNA Assay
 Data Path: C:\...ents and Settings\Bioanalyzer\2012-02-29\2012-02-29_003.xad

Created: 2/29/2012 11:39:35 AM
 Modified: 2/29/2012 2:57:03 PM

Electropherogram Summary Continued ...



Overall Results for sample 8 : E9

Number of peaks found: 48 Corr. Area 1: 2,425.6
 Noise: 0.5

Peak table for sample 8 : E9


Peak	Size [bp]	Conc. [pg/μl]	Molarity [pmol/l]	Observations
1	35	125.00	5,411.3	Lower Marker
2	48	38.69	1,222.3	
3	63	57.91	1,384.5	
4	93	495.66	8,108.2	
5	104	623.78	9,074.1	
6	116	330.17	4,294.1	
7	141	312.38	3,367.9	
8	151	272.30	2,729.9	
9	168	527.57	4,768.3	
10	173	114.75	1,007.4	
11	178	194.84	1,659.7	
12	184	207.21	1,705.0	
13	194	224.65	1,754.1	
14	204	303.33	2,251.3	
15	212	185.69	1,324.2	
16	226	262.65	1,763.4	
17	245	153.01	945.8	
18	252	192.47	1,157.0	
19	268	425.42	2,404.9	
20	296	123.77	632.5	
21	316	215.55	1,033.5	
22	367	57.31	236.6	
23	422	131.24	471.7	
24	448	71.47	241.8	
25	535	230.89	654.5	
26	581	140.09	365.5	

Assay Class: High Sensitivity DNA Assay
 Data Path: C:\...ents and Settings\Bioanalyzer\2012-02-29\2012-02-29_003.xad


Created: 2/29/2012 11:39:35 AM
 Modified: 2/29/2012 2:57:03 PM

Electropherogram Summary Continued ...

... Peak table for sample 8 : E9

Peak	Size [bp]	Conc. [pg/µl]	Molarity [pmol/l]	Observations
27	651	49.26	114.7	
28	693	63.86	139.6	
29	738	34.97	71.8	
30	790	71.38	136.9	
31	1,077	23.49	33.0	
32	2,241	31.48	21.3	
33	2,549	19.08	11.3	
34	2,857	17.11	9.1	
35	4,272	22.03	7.8	
36	 10,380	75.00	10.9	Upper Marker
37	23,574	0.00	0.0	
38	35,825	0.00	0.0	
39	42,422	0.00	0.0	
40	48,391	0.00	0.0	
41	58,757	0.00	0.0	
42	64,098	0.00	0.0	
43	67,867	0.00	0.0	
44	72,579	0.00	0.0	
45	77,920	0.00	0.0	
46	93,627	0.00	0.0	
47	102,108	0.00	0.0	
48	116,559	0.00	0.0	
49	124,726	0.00	0.0	
50	132,580	0.00	0.0	

Region table for sample 8 : E9


From [s]	Molarity [pmol/l]	Average Size [bp]	Conc. [pg/µl]	To [s]	Corr. Area % of Total	Size distribution in CV [%]	Color
66.94	12,924.4	426	2,697.10	99.74	2,425.6	45	50.8 

Assay Class: High Sensitivity DNA Assay
 Data Path: C:\...ents and Settings\Bioanalyzer\2012-02-29\2012-02-29_003.xad


Created: 2/29/2012 11:39:35 AM
 Modified: 2/29/2012 2:57:03 PM

Electropherogram Summary Continued ...

... Peak table for sample 9 : F3

Peak	Size [bp]	Conc. [pg/µl]	Molarity [pmol/l]	Observations
22	857	20.59	36.4	
23	889	12.39	21.1	
24	936	21.08	34.1	
25	963	9.73	15.3	
26	2,084	126.70	92.1	
27	2,164	11.48	8.0	
28	2,279	97.76	65.0	
29	2,977	62.20	31.7	
30	 10,380	75.00	10.9	Upper Marker
31	26,478	0.00	0.0	
32	38,156	0.00	0.0	
33	40,997	0.00	0.0	
34	44,784	0.00	0.0	
35	48,888	0.00	0.0	
36	52,991	0.00	0.0	
37	55,516	0.00	0.0	
38	62,460	0.00	0.0	
39	64,670	0.00	0.0	
40	71,929	0.00	0.0	
41	75,401	0.00	0.0	
42	82,030	0.00	0.0	
43	87,711	0.00	0.0	
44	91,499	0.00	0.0	
45	96,233	0.00	0.0	
46	99,074	0.00	0.0	
47	102,862	0.00	0.0	
48	106,334	0.00	0.0	
49	107,281	0.00	0.0	
50	120,537	0.00	0.0	
51	128,113	0.00	0.0	
52	131,585	0.00	0.0	
53	136,319	0.00	0.0	
54	142,948	0.00	0.0	
55	146,104	0.00	0.0	
56	150,523	0.00	0.0	
57	153,048	0.00	0.0	
58	156,836	0.00	0.0	
59	163,464	0.00	0.0	
60	167,883	0.00	0.0	
61	173,880	0.00	0.0	
62	178,930	0.00	0.0	
63	183,665	0.00	0.0	
64	189,031	0.00	0.0	

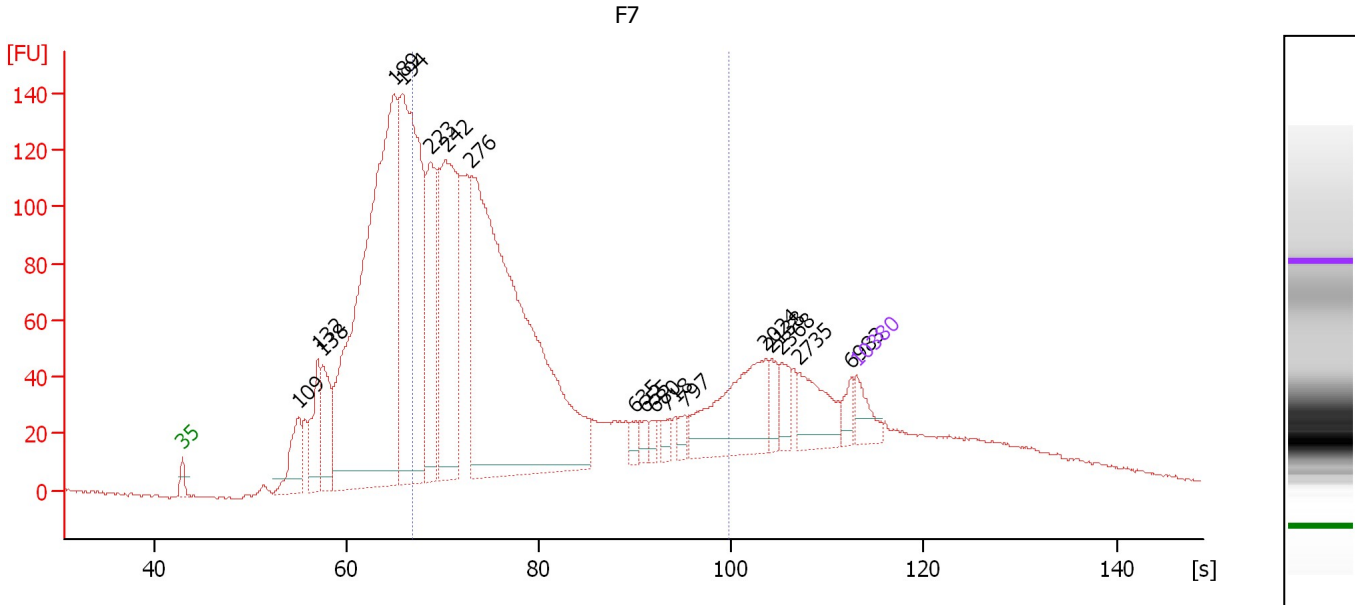
Region table for sample 9 : F3

From [s]	Molarity [pmol/l]	Average Size [bp]	Conc. [pg/µl]	To [s]	Corr. Area % of Total	Size distribution in CV [%]	Color
52.28	23,354.2	297	3,618.04	92.51	3,433.7	78	43.3 

Assay Class: High Sensitivity DNA Assay
 Data Path: C:\...ents and Settings\Bioanalyzer\2012-02-29\2012-02-29_003.xad

Created: 2/29/2012 11:39:35 AM
 Modified: 2/29/2012 2:57:03 PM

Electropherogram Summary Continued ...



Overall Results for sample 10 : F7

Number of peaks found: 18 Corr. Area 1: 2,173.1
 Noise: 0.5

Peak table for sample 10 : F7

Peak	Size [bp]	Conc. [pg/μl]	Molarity [pmol/l]	Observations
1	35	125.00	5,411.3	Lower Marker
2	109	264.32	3,676.0	
3	132	312.17	3,570.2	
4	138	301.39	3,316.0	
5	189	3,179.43	25,541.8	
6	194	1,831.54	14,334.8	
7	223	696.64	4,736.4	
8	242	1,099.60	6,872.7	
9	276	3,013.75	16,546.8	
10	635	40.10	95.7	
11	655	42.40	98.1	
12	680	37.58	83.7	
13	718	39.06	82.4	
14	797	40.77	77.5	
15	2,024	400.79	300.1	
16	2,138	67.63	47.9	
17	2,368	77.10	49.3	
18	2,735	183.23	101.5	
19	6,983	51.31	11.1	
20	10,380	75.00	10.9	Upper Marker

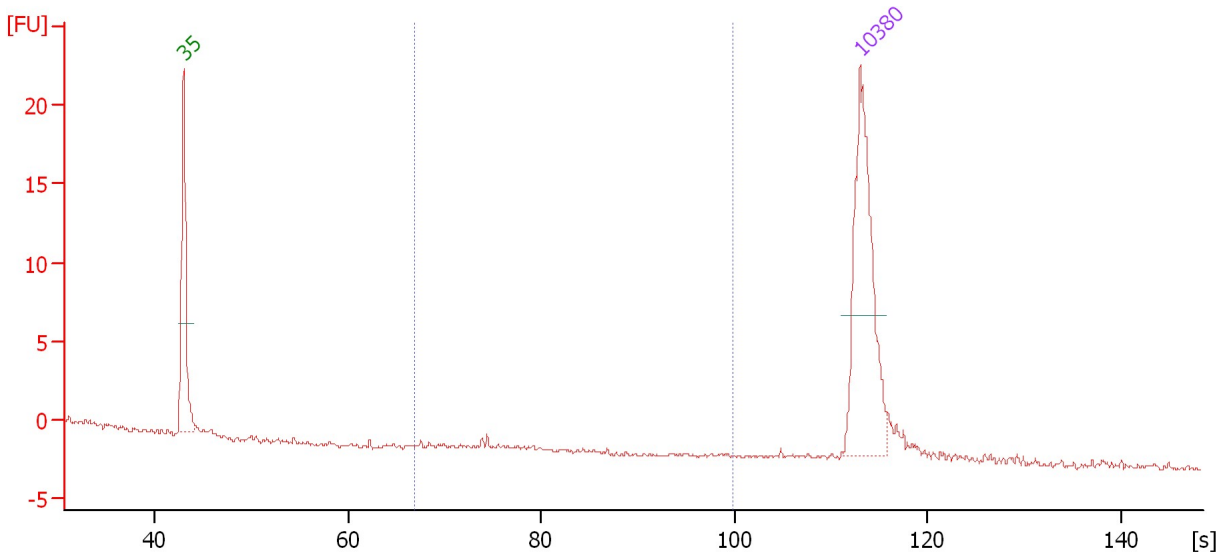
Region table for sample 10 : F7

From [s]	Molarity [pmol/l]	Average Size [bp]	Conc. [pg/μl]	To [s]	Corr. Area	% of Total	Size distribution in CV [%]	Color
66.94	35,734.6	380	7,093.18	99.74	2,173.1	51	51.9	Blue

Assay Class: High Sensitivity DNA Assay
 Data Path: C:\...ents and Settings\Bioanalyzer\2012-02-29\2012-02-29_003.xad

Created: 2/29/2012 11:39:35 AM
 Modified: 2/29/2012 2:57:03 PM

Electropherogram Summary Continued ...



Overall Results for sample 11 :

Number of peaks found: 0 Corr. Area 1: 0.1
 Noise: 0.1

Peak table for sample 11 :

Peak	Size [bp]	Conc. [pg/μl]	Molarity [pmol/l]	Observations
1	35	125.00	5,411.3	Lower Marker
2	10,380	75.00	10.9	Upper Marker

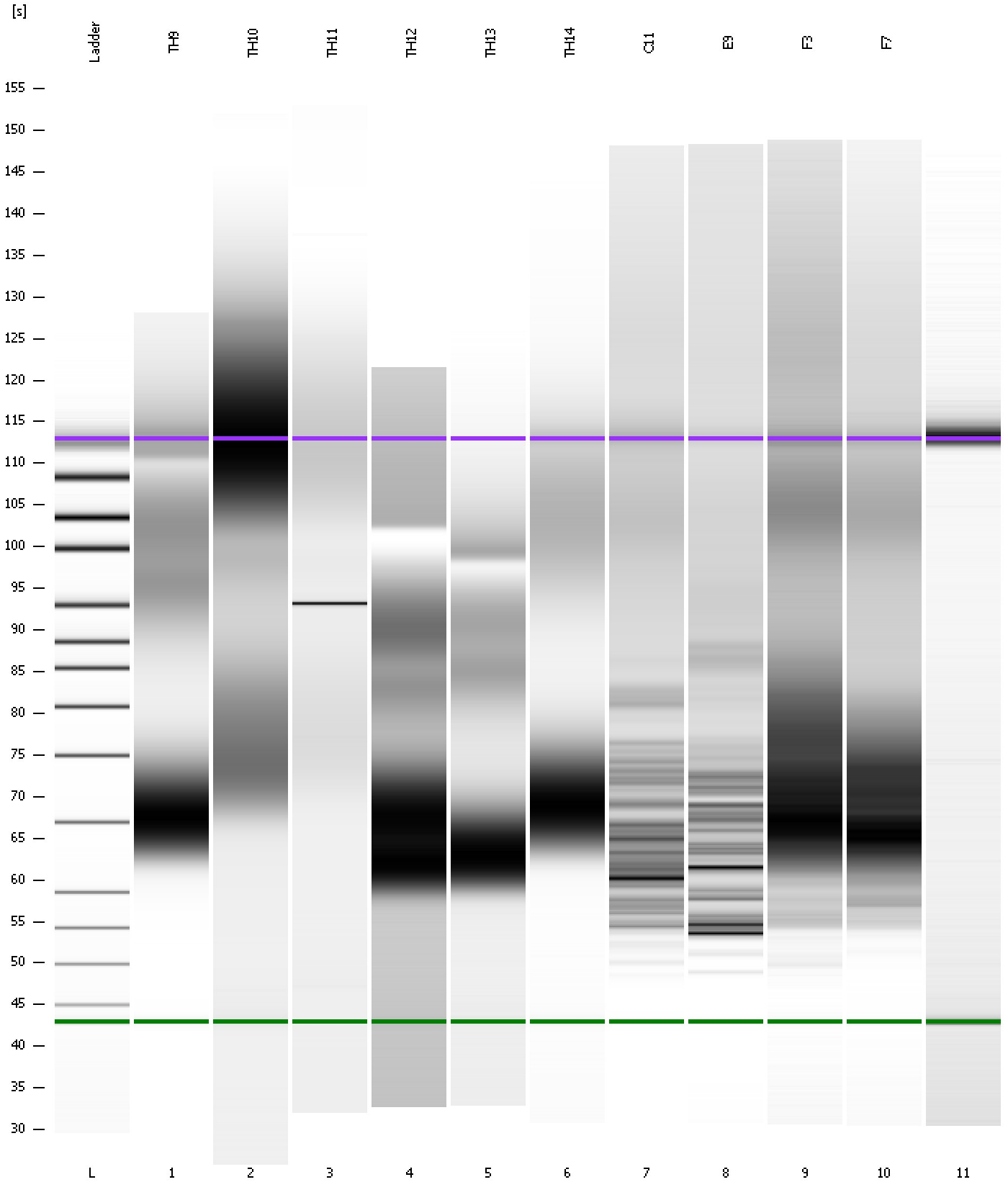
Region table for sample 11 :

From [s]	Molarity [pmol/l]	Average Size [bp]	Conc. [pg/μl]	To [s]	Corr. Area	% of Total	Size distribution in CV [%]	Color
66.94	1.4	292	0.26	99.74	0.1	1	0.9	Blue

Assay Class: High Sensitivity DNA Assay
Data Path: C:\...ents and Settings\Bioanalyzer\2012-02-29\2012-02-29_003.xad

Created: 2/29/2012 11:39:35 AM
Modified: 2/29/2012 2:57:03 PM

Gel Image

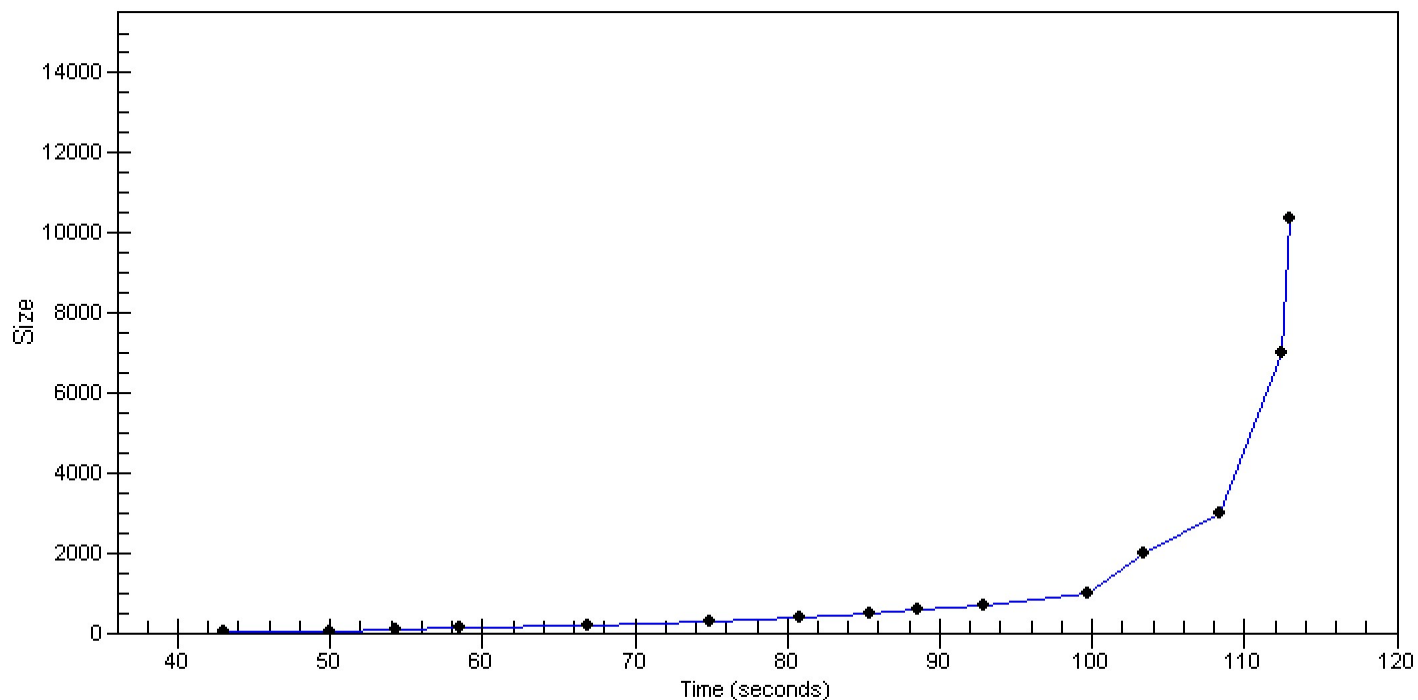


Assay Class: High Sensitivity DNA Assay
Data Path: C:\...ents and Settings\Bioanalyzer\2012-02-29\2012-02-29_003.xad

Created: 2/29/2012 11:39:35 AM
Modified: 2/29/2012 2:57:03 PM

Curves

Standard Curve



Assay Class: High Sensitivity DNA Assay
 Data Path: C:\...ents and Settings\Bioanalyzer\2012-02-29\2012-02-29_003.xad

Created: 2/29/2012 11:39:35 AM
 Modified: 2/29/2012 2:57:03 PM

Run Logbook

Description	Number	Source	Category	Sub Category	Time	Time Zone	User	Host
Run ended on port 1 (Number of wells acquired: 12)		Instrument	Run		2/29/2012 12:20:53 PM	(GMT --08:00) Pacific Standard Time	UC Davis	D8XSMGH1
Run started on port 1 (File: C:\Documents and Settings\Bioanalyzer\2012-02-29\2012-02-29_003.xad)		Instrument	Run		2/29/2012 11:39:40 AM	(GMT --08:00) Pacific Standard Time	UC Davis	D8XSMGH1
Product Number : G2938B		Instrument	Run		2/29/2012 11:39:40 AM	(GMT --08:00) Pacific Standard Time	UC Davis	D8XSMGH1
Name :		Instrument	Run		2/29/2012 11:39:40 AM	(GMT --08:00) Pacific Standard Time	UC Davis	D8XSMGH1
Vendor : Agilent Technologies		Instrument	Run		2/29/2012 11:39:40 AM	(GMT --08:00) Pacific Standard Time	UC Davis	D8XSMGH1
Serial# : DE13701086		Instrument	Run		2/29/2012 11:39:40 AM	(GMT --08:00) Pacific Standard Time	UC Davis	D8XSMGH1
Firmware : C.01.069		Instrument	Run		2/29/2012 11:39:40 AM	(GMT --08:00) Pacific Standard Time	UC Davis	D8XSMGH1
Cartridge : Electrode		Instrument	Run		2/29/2012 11:39:40 AM	(GMT --08:00) Pacific Standard Time	UC Davis	D8XSMGH1