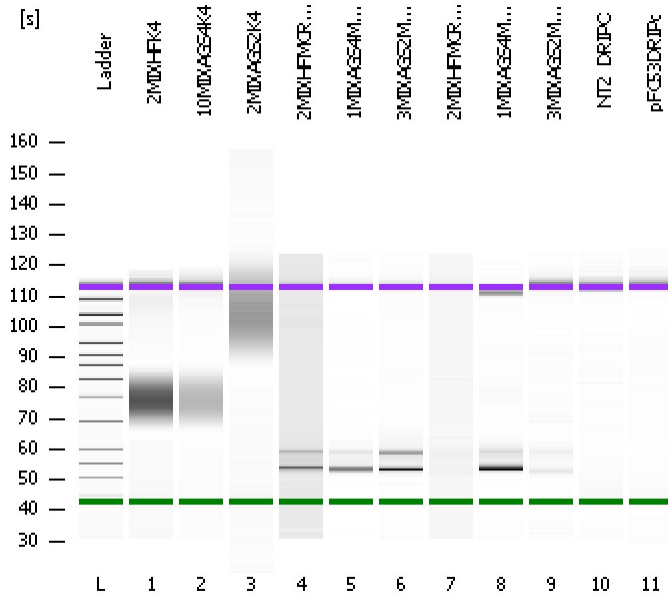


Assay Class: High Sensitivity DNA Assay
Data Path: C:\...ents and Settings\Bioanalyzer\2012-02-29\2012-02-29_004.xad

Created: 2/29/2012 1:16:27 PM
Modified: 2/29/2012 1:56:15 PM

Electrophoresis File Run Summary



Instrument Information:

Instrument Name: DE13701086 Firmware: C.01.069
Serial#: DE13701086 Type: G2938B

Assay Information:

Assay Origin Path: C:\Program Files\Agilent\2100 bioanalyzer\2100 expert\assays\dsDNA\High Sensitivity DNA.xsy
Assay Class: High Sensitivity DNA Assay
Version: 1.03
Assay Comments: Copyright © 2003-2010 Agilent Technologies

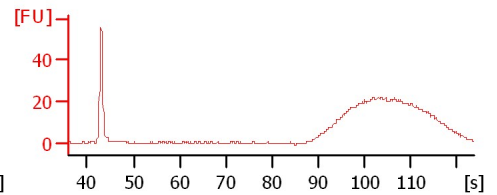
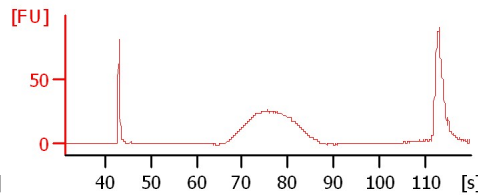
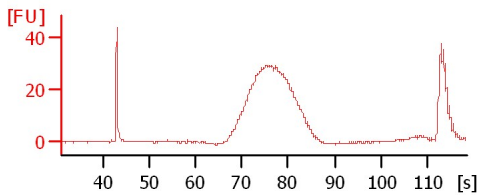
Chip Information:

Chip Lot #:
Reagent Kit Lot #:
Chip Comments:

2MIXHFK4

10MIXAGS4K4

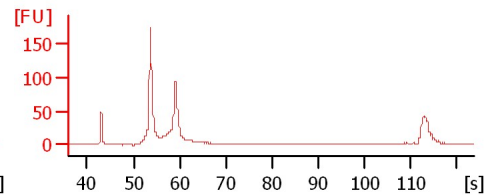
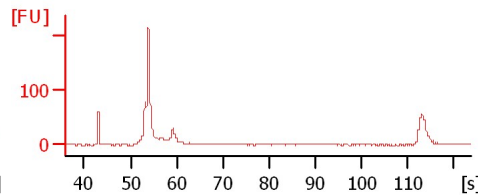
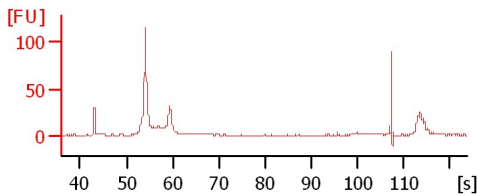
2MIXAGS2K4



2MIXHFMCRA1.2/1.8

1MIXAGS4MCRAMP1.2/1.8

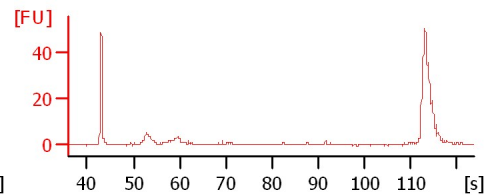
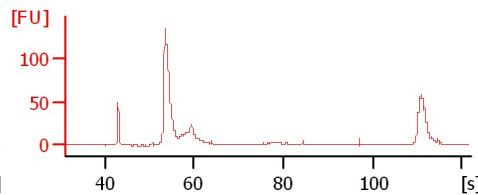
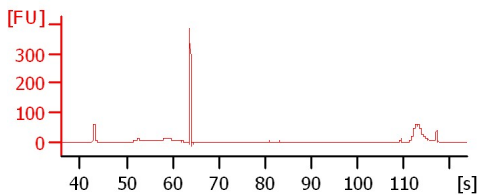
3MIXAGS2MCRAMP1.8



2MIXHFMCRA1.8

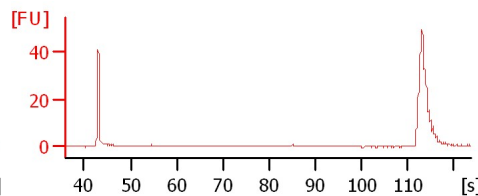
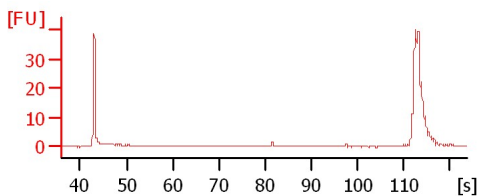
1MIXAGS4MCRG/A1.8

3MIXAGS2MCRG/A1.8



NT2_DRIPC

pFC53DRIPC



Assay Class: High Sensitivity DNA Assay
 Data Path: C:\...ents and Settings\Bioanalyzer\2012-02-29\2012-02-29_004.xad

Created: 2/29/2012 1:16:27 PM
 Modified: 2/29/2012 1:56:15 PM

Electrophoresis File Run Summary (Chip Summary)

Sample Name	Sample Comment	Rest. Digest	Status	Observation	Result Label	Result Color
2MIXHFK4		<input type="checkbox"/>	✓			
10MIXAGS4K4		<input type="checkbox"/>	✓			
2MIXAGS2K4		<input type="checkbox"/>	✓			
2MIXHFMCAMP1.2/1.8		<input type="checkbox"/>	✓			
1MIXAGS4MCRAMP1.2/1.8		<input type="checkbox"/>	✓			
3MIXAGS2MCRAMP1.8		<input type="checkbox"/>	✓			
2MIXHFMCAMP/A1.8		<input type="checkbox"/>	✓			
1MIXAGS4MCRG/A1.8		<input type="checkbox"/>	✓			
3MIXAGS2MCRG/A1.8		<input type="checkbox"/>	✓			
NT2_DRIPC		<input type="checkbox"/>	✓			
pFC53DRIPC		<input type="checkbox"/>	✓			
Ladder		<input type="checkbox"/>	✓			

Chip Lot #

Reagent Kit Lot #

Chip Comments :

Assay Class: High Sensitivity DNA Assay
Data Path: C:\...ents and Settings\Bioanalyzer\2012-02-29\2012-02-29_004.xad

Created: 2/29/2012 1:16:27 PM
Modified: 2/29/2012 1:56:15 PM

Electrophoresis Assay Details

General Analysis Settings

Number of Available Sample and Ladder Wells (Max.) : 12
Minimum Visible Range [s] : 32
Maximum Visible Range [s] : 138
Start Analysis Time Range [s] : 33
End Analysis Time Range [s] : 137.5
Ladder Concentration [pg/μl] : 1950
Uses Standard Area for Ladder Fragments
Lower Marker Concentration [pg/μl] : 125
Upper Marker Concentration [pg/μl] : 75
Used Upper Marker for Quantitation
Standard Curve Fit is Point to Point
Show Data Aligned to Lower and Upper Marker

Integrator Settings

Integration Start Time [s] : 33.05
Integration End Time [s] : 137
Slope Threshold : 0.8
Height Threshold [FU] : 5
Area Threshold : 0.1
Width Threshold [s] : 0.6
Baseline Plateau [s] : 0.5

Filter Settings

Filter Width [s] : 0.5
Polynomial Order : 4

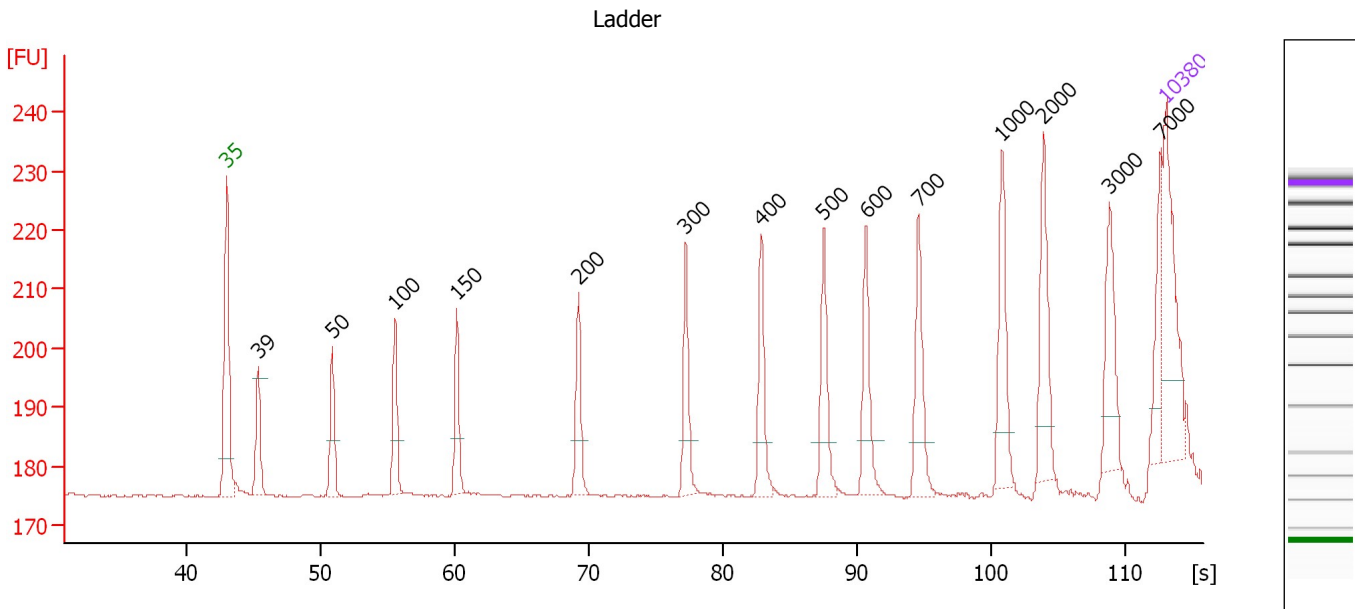
Ladder

Ladder Peak	Size	Area
1	35	160
2	50	210
3	100	208
4	150	221
5	200	242
6	300	270
7	400	305
8	500	306
9	600	336
10	700	321
11	1000	366
12	2000	413
13	3000	411
14	7000	400
15	10380	214

Assay Class: High Sensitivity DNA Assay
 Data Path: C:\...ents and Settings\Bioanalyzer\2012-02-29\2012-02-29_004.xad

Created: 2/29/2012 1:16:27 PM
 Modified: 2/29/2012 1:56:15 PM

Electropherogram Summary



Overall Results for Ladder

Noise: 0.2

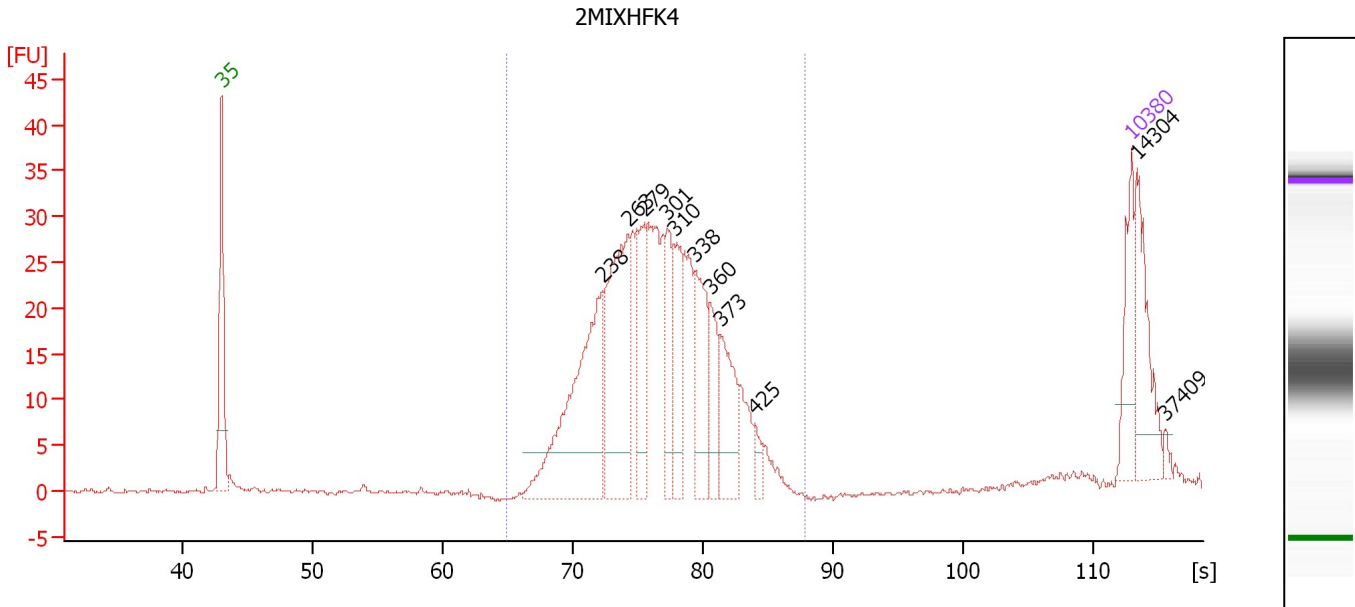
Peak table for Ladder

Peak	Size [bp]	Conc. [pg/μl]	Molarity [pmol/l]	Observations
1	35	125.00	5,411.3	Lower Marker
2	39	0.00	0.0	
3	50	150.00	4,545.5	Ladder Peak
4	100	150.00	2,272.7	Ladder Peak
5	150	150.00	1,515.2	Ladder Peak
6	200	150.00	1,136.4	Ladder Peak
7	300	150.00	757.6	Ladder Peak
8	400	150.00	568.2	Ladder Peak
9	500	150.00	454.5	Ladder Peak
10	600	150.00	378.8	Ladder Peak
11	700	150.00	324.7	Ladder Peak
12	1,000	150.00	227.3	Ladder Peak
13	2,000	150.00	113.6	Ladder Peak
14	3,000	150.00	75.8	Ladder Peak
15	7,000	150.00	32.5	Ladder Peak
16	10,380	75.00	10.9	Upper Marker

Assay Class: High Sensitivity DNA Assay
 Data Path: C:\...ents and Settings\Bioanalyzer\2012-02-29\2012-02-29_004.xad

Created: 2/29/2012 1:16:27 PM
 Modified: 2/29/2012 1:56:15 PM

Electropherogram Summary Continued ...



Overall Results for sample 1 : 2MIXHFK4

Number of peaks found: 11 Corr. Area 1: 440.7
 Noise: 0.2

Peak table for sample 1 : 2MIXHFK4

Peak	Size [bp]	Conc. [pg/μl]	Molarity [pmol/l]	Observations
1	35	125.00	5,411.3	Lower Marker
2	238	449.22	2,856.2	
3	263	346.79	1,997.4	
4	279	168.18	914.8	
5	301	118.26	595.2	
6	310	124.62	609.4	
7	338	150.87	675.6	
8	360	81.79	343.9	
9	373	120.90	491.4	
10	425	23.05	82.2	
11	10,380	75.00	10.9	Upper Marker
12	14,304	0.00	0.0	
13	37,409	0.00	0.0	

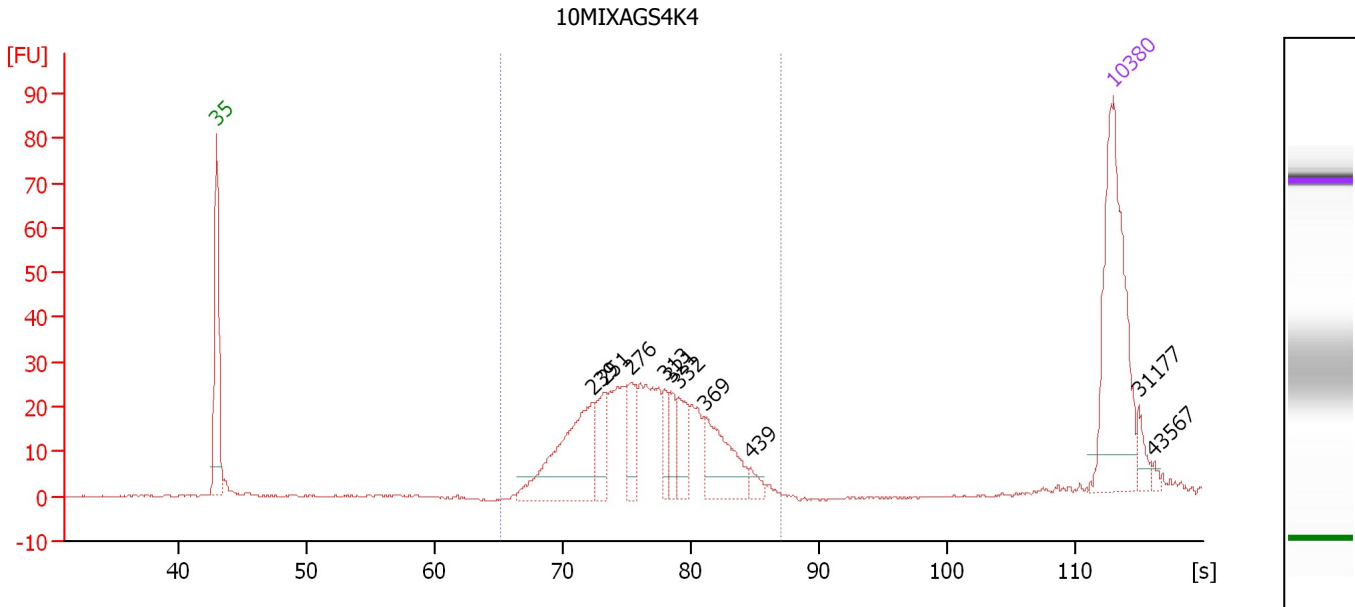
Region table for sample 1 : 2MIXHFK4

From [s]	Molarity [pmol/l]	Average Size [bp]	Conc. [pg/μl]	To [s]	Corr. Area % of Total	Size distribution in CV [%]	Color	
64.98	10,841.7	296	2,022.95	87.92	440.7	90	19.7	Blue

Assay Class: High Sensitivity DNA Assay
 Data Path: C:\...ents and Settings\Bioanalyzer\2012-02-29\2012-02-29_004.xad

Created: 2/29/2012 1:16:27 PM
 Modified: 2/29/2012 1:56:15 PM

Electropherogram Summary Continued ...



Overall Results for sample 2 : 10MIXAGS4K4

Number of peaks found: 10 Corr. Area 1: 418.5
 Noise: 0.2

Peak table for sample 2 : 10MIXAGS4K4

Peak	Size [bp]	Conc. [pg/μl]	Molarity [pmol/l]	Observations
1	35	125.00	5,411.3	Lower Marker
2	239	88.26	560.6	
3	251	26.20	158.1	
4	276	23.96	131.4	
5	313	14.23	68.8	
6	321	14.64	69.0	
7	332	21.19	96.8	
8	369	42.21	173.4	
9	439	5.89	20.3	
10	10,380	75.00	10.9	Upper Marker
11	31,177	0.00	0.0	
12	43,567	0.00	0.0	

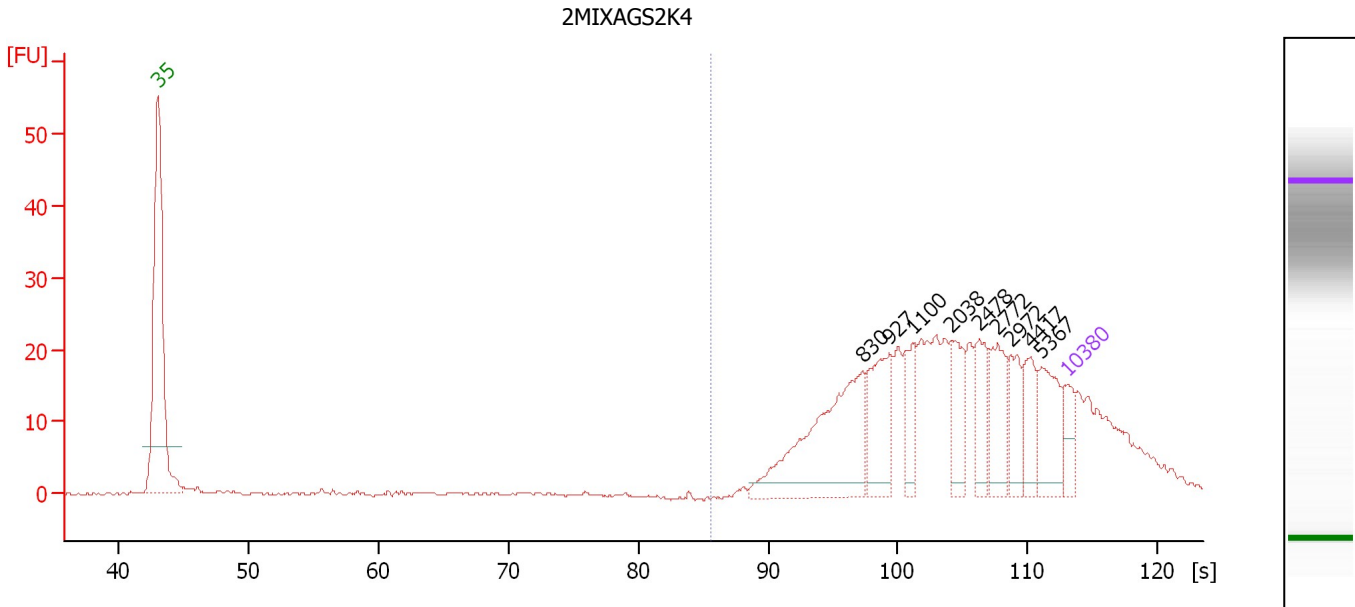
Region table for sample 2 : 10MIXAGS4K4

From [s]	Molarity [pmol/l]	Average Size [bp]	Conc. [pg/μl]	To [s]	Corr. Area	% of Total	Size distribution in CV [%]	Color
65.24	1,839.9	297	340.71	87.10	418.5	93	21.2	Blue

Assay Class: High Sensitivity DNA Assay
 Data Path: C:\...ents and Settings\Bioanalyzer\2012-02-29\2012-02-29_004.xad

Created: 2/29/2012 1:16:27 PM
 Modified: 2/29/2012 1:56:15 PM

Electropherogram Summary Continued ...



Setpoint Deviations for sample 3 : 2MIXAGS2K4

Height Threshold [FU] : 2

Overall Results for sample 3 : 2MIXAGS2K4

Number of peaks found: 9 Corr. Area 1: 341.9
 Noise: 0.2

Peak table for sample 3 : 2MIXAGS2K4

Peak	Size [bp]	Conc. [pg/µl]	Molarity [pmol/l]	Observations
1	35	125.00	5,411.3	Lower Marker
2	830	589.80	1,076.3	
3	927	229.67	375.3	
4	1,100	111.54	153.7	
5	2,038	123.19	91.6	
6	2,478	121.11	74.0	
7	2,772	151.49	82.8	
8	2,972	114.24	58.2	
9	4,417	111.17	38.1	
10	5,367	171.82	48.5	
11	10,380	75.00	10.9	Upper Marker

Region table for sample 3 : 2MIXAGS2K4

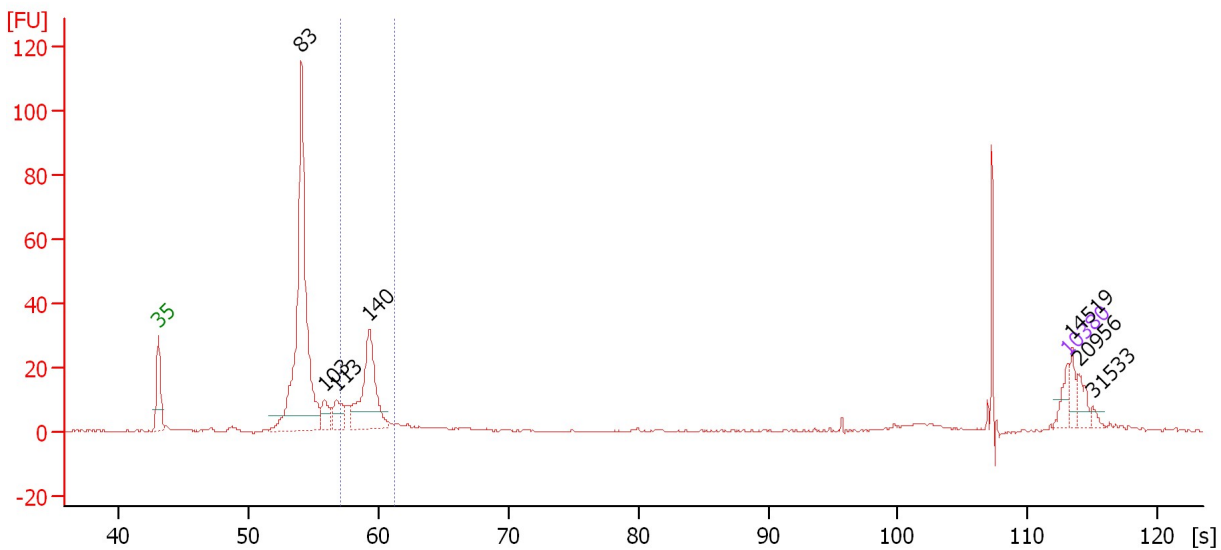
From [s]	Molarity [pmol/l]	Average Size [bp]	Conc. [pg/µl]	To [s]	Corr. Area	% of Total	Size distribution in CV [%]	Color
85.64	2,720.2	9,272	2,441.13	125.31	341.9	98	100.0	Blue

Assay Class: High Sensitivity DNA Assay
 Data Path: C:\...ents and Settings\Bioanalyzer\2012-02-29\2012-02-29_004.xad

Created: 2/29/2012 1:16:27 PM
 Modified: 2/29/2012 1:56:15 PM

Electropherogram Summary Continued ...

2MIXHFMCAMP1.2/1.8



Overall Results for sample 4 : 2MIXHFMCAMP1.2/1.8

Number of peaks found: 7 Corr. Area 1: 83.0
 Noise: 0.2

Peak table for sample 4 : 2MIXHFMCAMP1.2/1.8

Peak	Size [bp]	Conc. [pg/μl]	Molarity [pmol/l]	Observations
1	35	125.00	5,411.3	Lower Marker
2	83	2,552.45	46,320.4	
3	103	180.89	2,671.2	
4	113	223.60	2,997.6	
5	140	878.83	9,511.7	
6	10,380	75.00	10.9	Upper Marker
7	14,519	0.00	0.0	
8	20,956	0.00	0.0	
9	31,533	0.00	0.0	

Region table for sample 4 : 2MIXHFMCAMP1.2/1.8

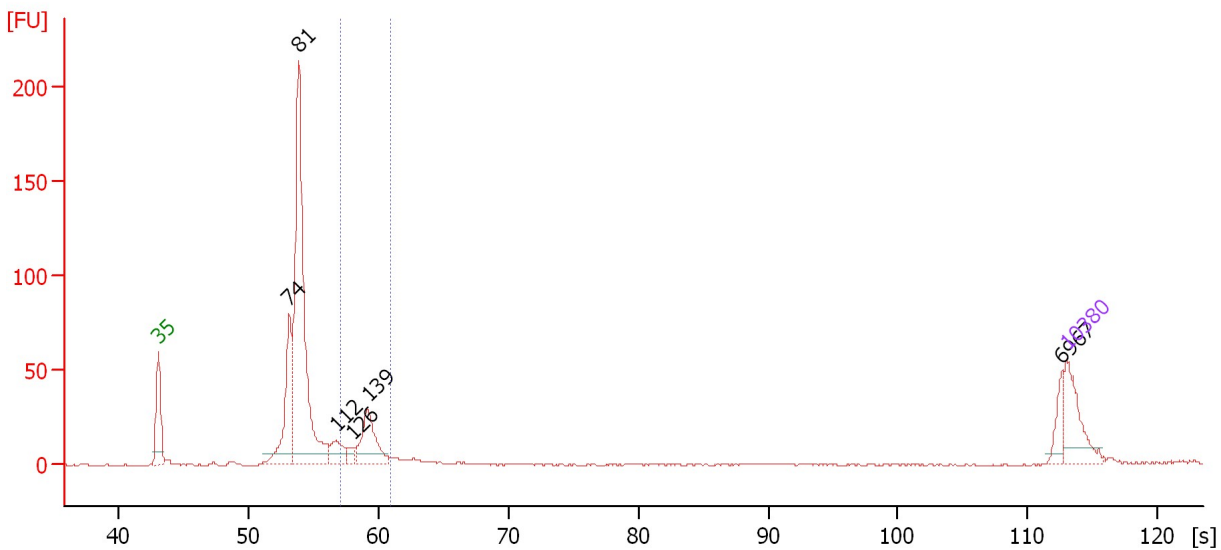
From [s]	Molarity [pmol/l]	Average Size [bp]	Conc. [pg/μl]	To [s]	Corr. Area	% of Total	Size distribution in CV [%]	Color
56.99	12,722.8	137	1,145.57	61.28	83.0	23	7.2	Blue

Assay Class: High Sensitivity DNA Assay
 Data Path: C:\...ents and Settings\Bioanalyzer\2012-02-29\2012-02-29_004.xad

Created: 2/29/2012 1:16:27 PM
 Modified: 2/29/2012 1:56:15 PM

Electropherogram Summary Continued ...

1MIXAGS4MCRAMP1.2/1.8



Overall Results for sample 5 : 1MIXAGS4MCRAMP1.2/1.8

Number of peaks found: 6 Corr. Area 1: 83.7
 Noise: 0.2

Peak table for sample 5 : 1MIXAGS4MCRAMP1.2/1.8

Peak	Size [bp]	Conc. [pg/μl]	Molarity [pmol/l]	Observations
1	35	125.00	5,411.3	Lower Marker
2	74	227.72	4,679.4	
3	81	741.20	13,823.3	
4	112	54.12	732.5	
5	126	21.05	253.5	
6	139	133.72	1,461.0	
7	6,967	30.97	6.7	
8	10,380	75.00	10.9	Upper Marker

Region table for sample 5 : 1MIXAGS4MCRAMP1.2/1.8

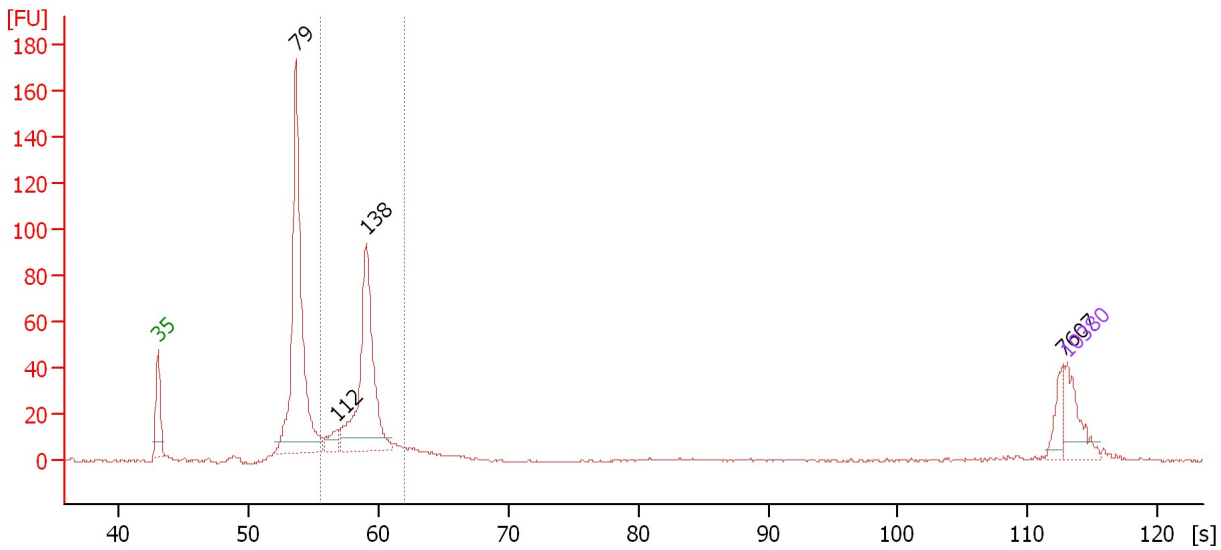
From [s]	Molarity [pmol/l]	Average Size [bp]	Conc. [pg/μl]	To [s]	Corr. Area	% of Total	Size distribution in CV [%]	Color
57.01	1,998.1	136	178.94	60.86	83.7	14	7.1	Blue

Assay Class: High Sensitivity DNA Assay
 Data Path: C:\...ents and Settings\Bioanalyzer\2012-02-29\2012-02-29_004.xad

Created: 2/29/2012 1:16:27 PM
 Modified: 2/29/2012 1:56:15 PM

Electropherogram Summary Continued ...

3MIXAGS2MCRAMP1.8



Overall Results for sample 6 : 3MIXAGS2MCRAMP1.8

Number of peaks found: 4 Corr. Area 1: 261.4
 Noise: 0.3

Peak table for sample 6 : 3MIXAGS2MCRAMP1.8

Peak	Size [bp]	Conc. [pg/μl]	Molarity [pmol/l]	Observations
1	35	125.00	5,411.3	Lower Marker
2	79	829.37	15,919.0	
3	112	48.17	649.7	
4	138	546.66	6,021.7	
5	7,607	43.50	8.7	
6	10,380	75.00	10.9	Upper Marker

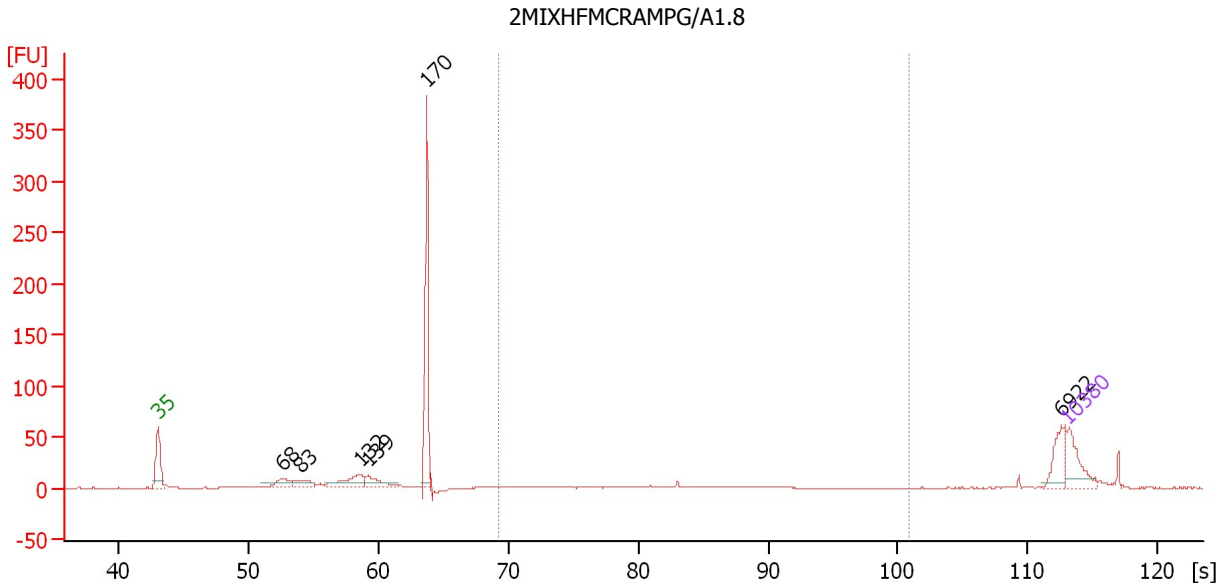
Region table for sample 6 : 3MIXAGS2MCRAMP1.8

From [s]	Molarity [pmol/l]	Average Size [bp]	Conc. [pg/μl]	To [s]	Corr. Area	% of Total	Size distribution in CV [%]	Color
55.51	8,534.9	134	754.77	62.06	261.4	42	9.7	Blue

Assay Class: High Sensitivity DNA Assay
 Data Path: C:\...ents and Settings\Bioanalyzer\2012-02-29\2012-02-29_004.xad

Created: 2/29/2012 1:16:27 PM
 Modified: 2/29/2012 1:56:15 PM

Electropherogram Summary Continued ...



Overall Results for sample 7 : 2MIXHFMCRAMPG/A1.8

Number of peaks found: 6 Corr. Area 1: 19.0
 Noise: 0.2

Peak table for sample 7 : 2MIXHFMCRAMPG/A1.8

Peak	Size [bp]	Conc. [pg/μl]	Molarity [pmol/l]	Observations
1	35	125.00	5,411.3	Lower Marker
2	68	57.68	1,287.0	
3	83	49.72	903.6	
4	132	103.79	1,189.9	
5	139	67.55	737.2	
6	170	392.30	3,506.1	
7	6,922	73.65	16.1	
8	10,380	75.00	10.9	Upper Marker

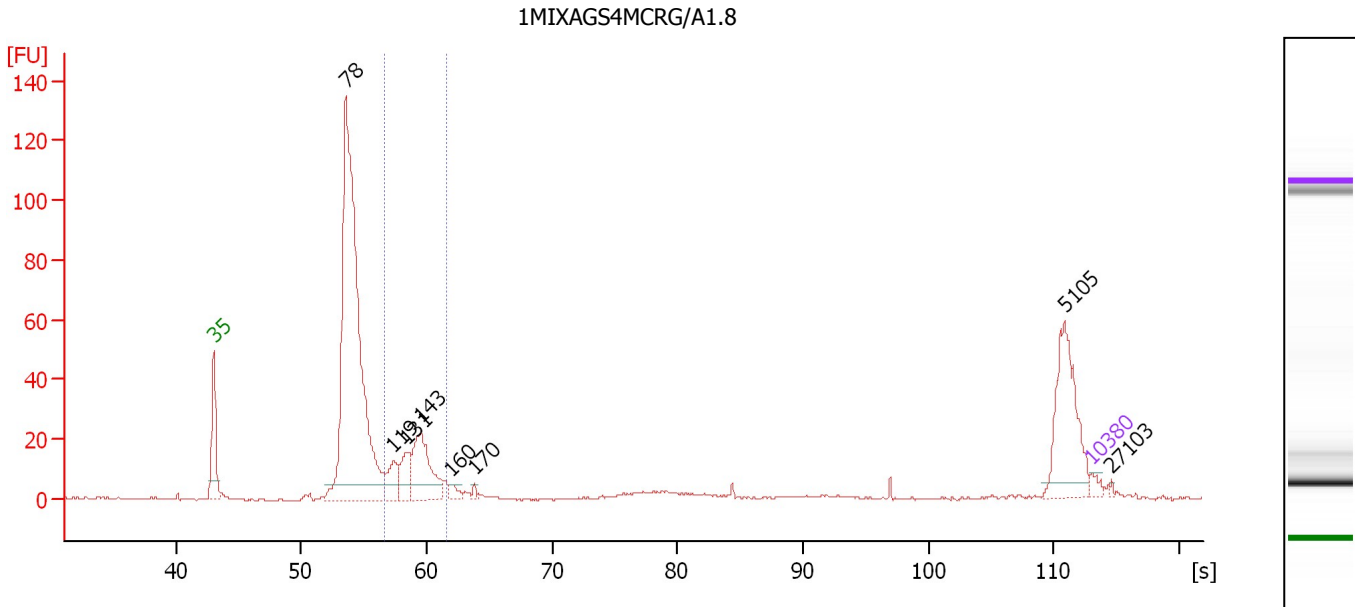
Region table for sample 7 : 2MIXHFMCRAMPG/A1.8

From [s]	Molarity [pmol/l]	Average Size [bp]	Conc. [pg/μl]	To [s]	Corr. Area	% of Total	Size distribution in CV [%]	Color
69.23	151.9	400	34.65	100.83	19.0	5	30.6	Blue

Assay Class: High Sensitivity DNA Assay
 Data Path: C:\...ents and Settings\Bioanalyzer\2012-02-29\2012-02-29_004.xad

Created: 2/29/2012 1:16:27 PM
 Modified: 2/29/2012 1:56:15 PM

Electropherogram Summary Continued ...



Overall Results for sample 8 : 1MIXAGS4MCRG/A1.8

Number of peaks found: 8 Corr. Area 1: 112.3
 Noise: 0.3

Peak table for sample 8 : 1MIXAGS4MCRG/A1.8

Peak	Size [bp]	Conc. [pg/μl]	Molarity [pmol/l]	Observations
1	35	125.00	5,411.3	Lower Marker
2	78	9,391.85	181,796.5	
3	119	491.85	6,247.1	
4	131	588.85	6,790.6	
5	143	1,423.75	15,083.9	
6	160	145.93	1,384.5	
7	170	53.71	478.4	
8	5,105	1,221.33	362.5	
9	10,380	75.00	10.9	Upper Marker
10	27,103	0.00	0.0	

Region table for sample 8 : 1MIXAGS4MCRG/A1.8

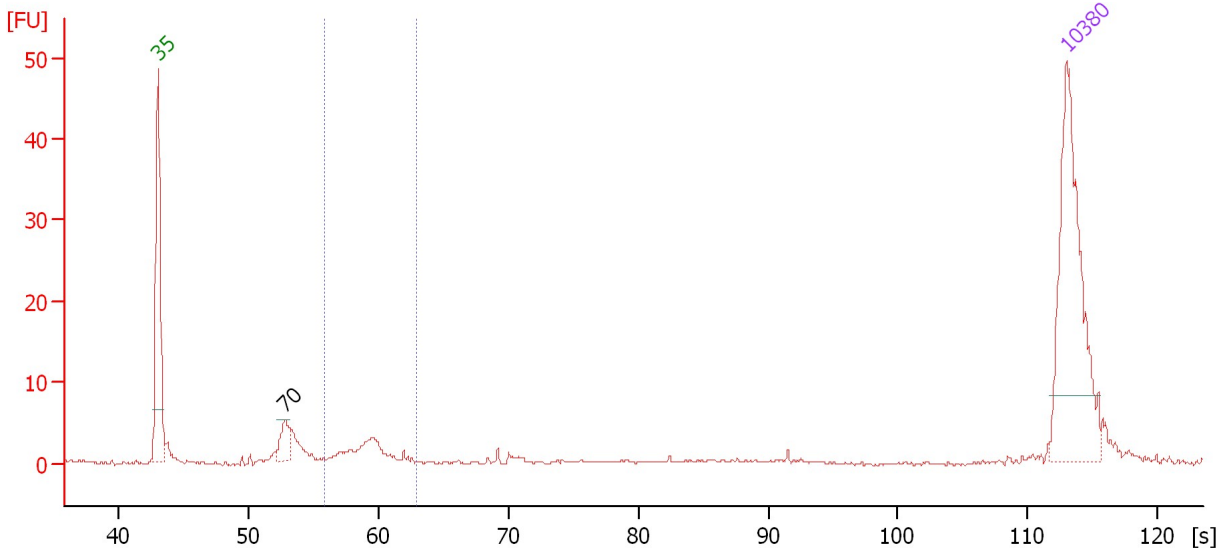
From [s]	Molarity [pmol/l]	Average Size [bp]	Conc. [pg/μl]	To [s]	Corr. Area	% of Total	Size distribution in CV [%]	Color
56.61	28,041.7	136	2,513.55	61.60	112.3	17	9.1	Blue

Assay Class: High Sensitivity DNA Assay
 Data Path: C:\...ents and Settings\Bioanalyzer\2012-02-29\2012-02-29_004.xad

Created: 2/29/2012 1:16:27 PM
 Modified: 2/29/2012 1:56:15 PM

Electropherogram Summary Continued ...

3MIXAGS2MCRG/A1.8



Overall Results for sample 9 : 3MIXAGS2MCRG/A1.8

Number of peaks found: 1 Corr. Area 1: 15.8
 Noise: 0.2

Peak table for sample 9 : 3MIXAGS2MCRG/A1.8

Peak	Size [bp]	Conc. [pg/μl]	Molarity [pmol/l]	Observations
1	35	125.00	5,411.3	Lower Marker
2	70	13.58	293.6	
3	10,380	75.00	10.9	Upper Marker

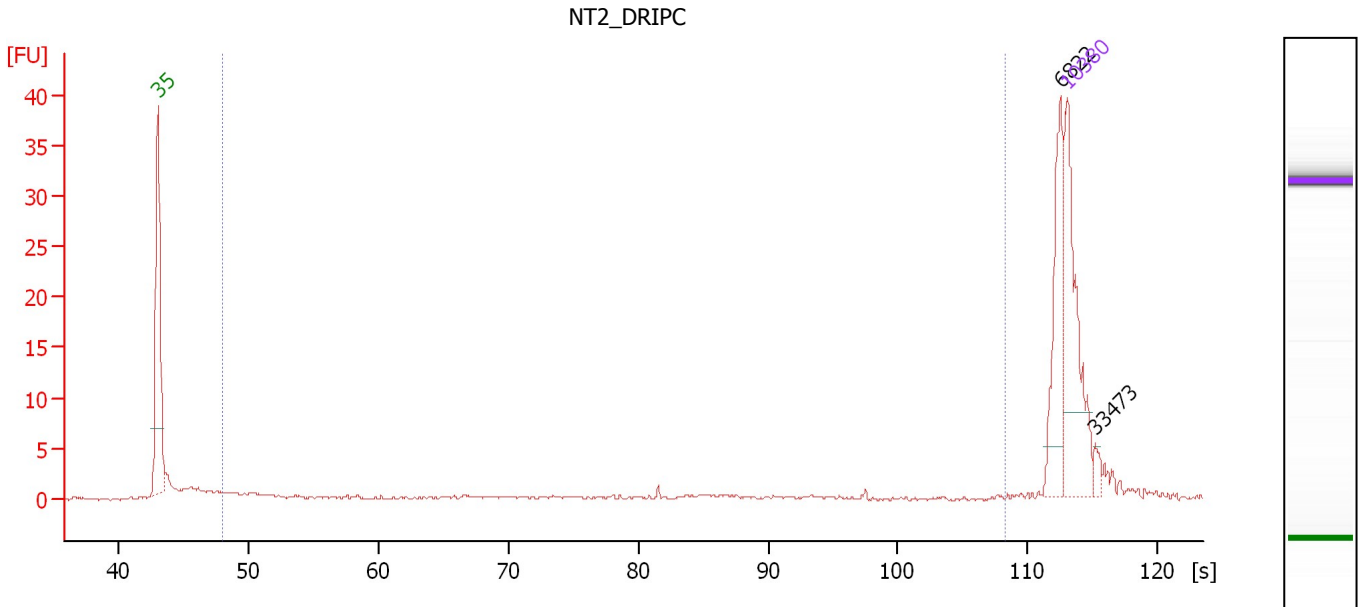
Region table for sample 9 : 3MIXAGS2MCRG/A1.8

From [s]	Molarity [pmol/l]	Average Size [bp]	Conc. [pg/μl]	To [s]	Corr. Area	% of Total	Size distribution in CV [%]	Color
55.86	310.2	137	27.91	62.85	15.8	27	10.6	Blue

Assay Class: High Sensitivity DNA Assay
 Data Path: C:\...ents and Settings\Bioanalyzer\2012-02-29\2012-02-29_004.xad

Created: 2/29/2012 1:16:27 PM
 Modified: 2/29/2012 1:56:15 PM

Electropherogram Summary Continued ...



Overall Results for sample 10 : NT2_DRIPC

Number of peaks found: 2 Corr. Area 1: 9.8
 Noise: 0.1

Peak table for sample 10 : NT2_DRIPC

Peak	Size [bp]	Conc. [pg/μl]	Molarity [pmol/l]	Observations
1	35	125.00	5,411.3	Lower Marker
2	6,822	59.80	13.3	
3	10,380	75.00	10.9	Upper Marker
4	33,473	0.00	0.0	

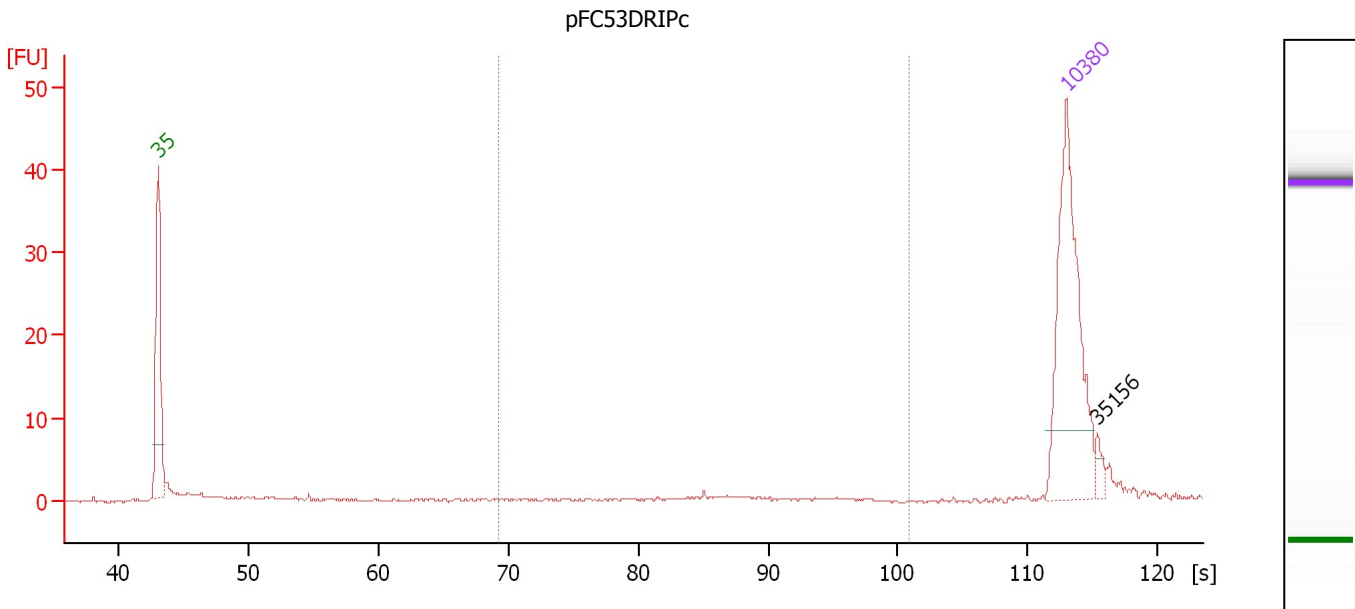
Region table for sample 10 : NT2_DRIPC

From [s]	Molarity [pmol/l]	Average Size [bp]	Conc. [pg/μl]	To [s]	Corr. Area	% of Total	Size distribution in CV [%]	Color
47.88	491.6	455	31.14	108.28	9.8	17	100.0	Blue

Assay Class: High Sensitivity DNA Assay
 Data Path: C:\...ents and Settings\Bioanalyzer\2012-02-29\2012-02-29_004.xad

Created: 2/29/2012 1:16:27 PM
 Modified: 2/29/2012 1:56:15 PM

Electropherogram Summary Continued ...



Overall Results for sample 11 : pFC53DRIPc

Number of peaks found: 1 Corr. Area 1: 0.2
 Noise: 0.1

Peak table for sample 11 : pFC53DRIPc

Peak	Size [bp]	Conc. [pg/μl]	Molarity [pmol/l]	Observations
1	35	125.00	5,411.3	Lower Marker
2	10,380	75.00	10.9	Upper Marker
3	35,156	0.00	0.0	

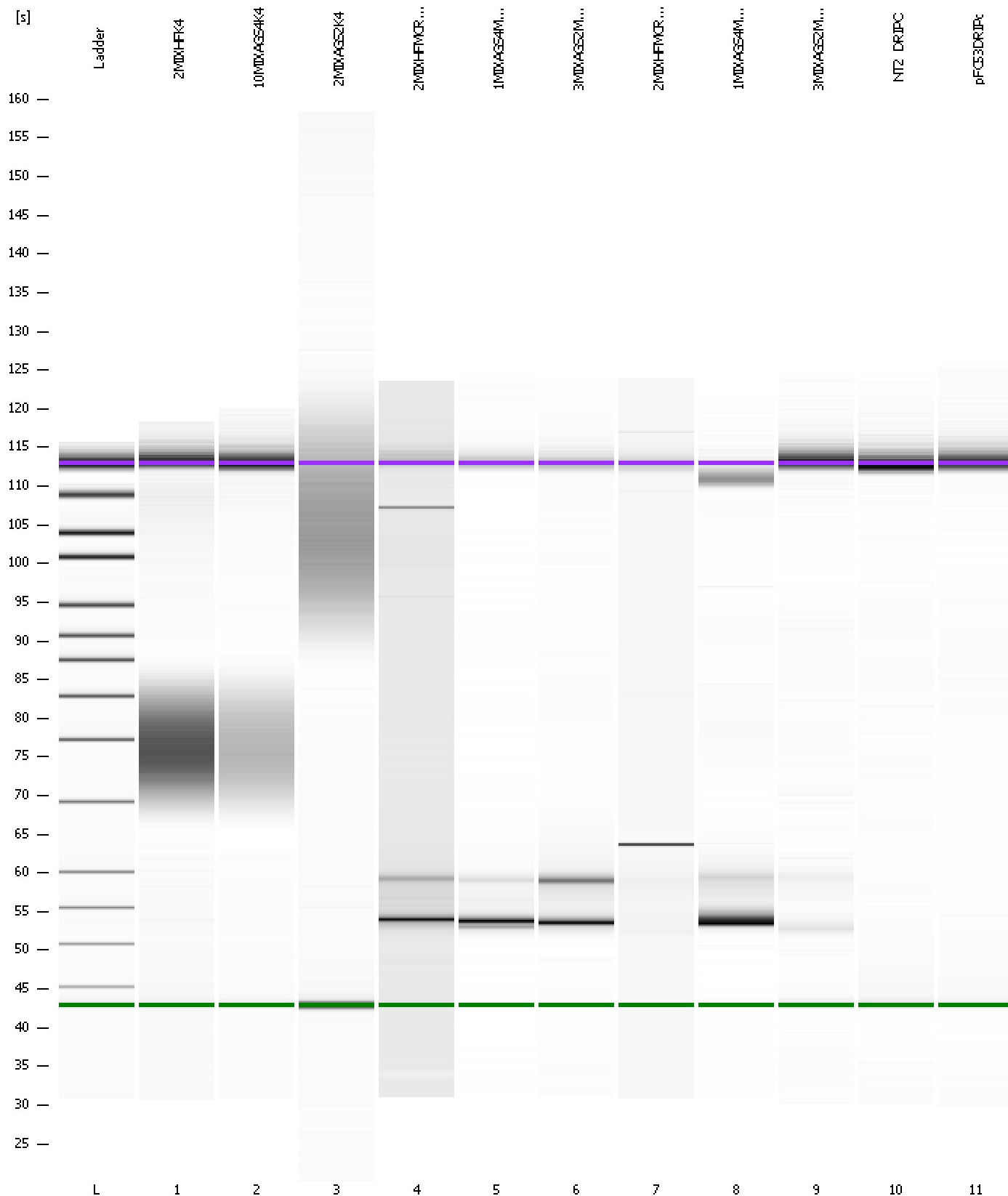
Region table for sample 11 : pFC53DRIPc

From [s]	Molarity [pmol/l]	Average Size [bp]	Conc. [pg/μl]	To [s]	Corr. Area	% of Total	Size distribution in CV [%]	Color
69.23	1.0	462	0.32	100.83	0.2	2	4.6	Blue

Assay Class: High Sensitivity DNA Assay
Data Path: C:\...ents and Settings\Bioanalyzer\2012-02-29\2012-02-29_004.xad

Created: 2/29/2012 1:16:27 PM
Modified: 2/29/2012 1:56:15 PM

Gel Image

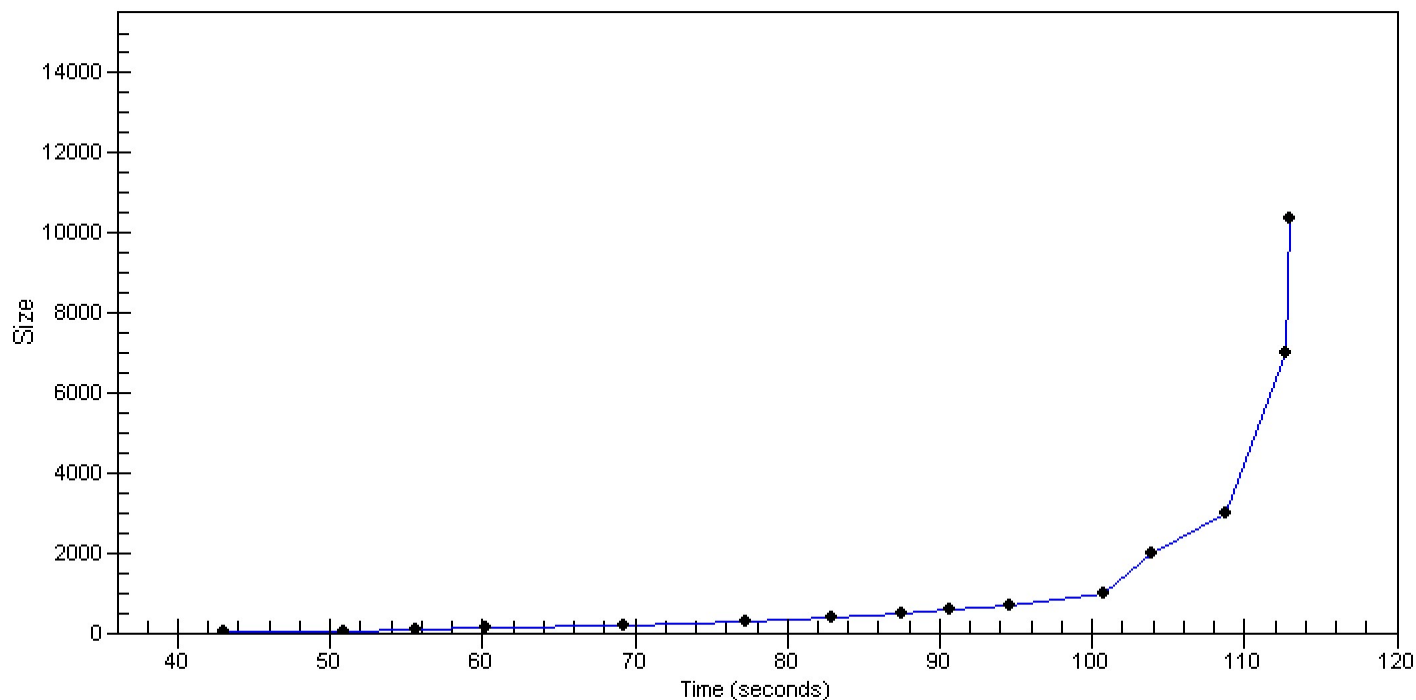


Assay Class: High Sensitivity DNA Assay
Data Path: C:\...ents and Settings\Bioanalyzer\2012-02-29\2012-02-29_004.xad

Created: 2/29/2012 1:16:27 PM
Modified: 2/29/2012 1:56:15 PM

Curves

Standard Curve



Assay Class: High Sensitivity DNA Assay
 Data Path: C:\...ents and Settings\Bioanalyzer\2012-02-29\2012-02-29_004.xad

Created: 2/29/2012 1:16:27 PM
 Modified: 2/29/2012 1:56:15 PM

Run Logbook

Description	Number	Source	Category	Sub Category	Time	Time Zone	User	Host
Run ended on port 1 (Number of wells acquired: 12)		Instrument	Run		2/29/2012 1:57:46 PM	(GMT --08:00) Pacific Standard Time	UC Davis	D8XSMGH1
Run started on port 1 (File: C:\Documents and Settings\Bioanalyzer\2012-02-29\2012-02-29_004.xad)		Instrument	Run		2/29/2012 1:16:33 PM	(GMT --08:00) Pacific Standard Time	UC Davis	D8XSMGH1
Product Number : G2938B		Instrument	Run		2/29/2012 1:16:33 PM	(GMT --08:00) Pacific Standard Time	UC Davis	D8XSMGH1
Name :		Instrument	Run		2/29/2012 1:16:33 PM	(GMT --08:00) Pacific Standard Time	UC Davis	D8XSMGH1
Vendor : Agilent Technologies		Instrument	Run		2/29/2012 1:16:33 PM	(GMT --08:00) Pacific Standard Time	UC Davis	D8XSMGH1
Serial# : DE13701086		Instrument	Run		2/29/2012 1:16:33 PM	(GMT --08:00) Pacific Standard Time	UC Davis	D8XSMGH1
Firmware : C.01.069		Instrument	Run		2/29/2012 1:16:33 PM	(GMT --08:00) Pacific Standard Time	UC Davis	D8XSMGH1
Cartridge : Electrode		Instrument	Run		2/29/2012 1:16:33 PM	(GMT --08:00) Pacific Standard Time	UC Davis	D8XSMGH1