

Assay Class: High Sensitivity DNA Assay
Data Path: C:\...ents and Settings\Bioanalyzer\2012-02-29\2012-02-29_005.xad

Created: 2/29/2012 2:32:43 PM
Modified: 2/29/2012 4:38:17 PM

Electrophoresis File Run Summary

Instrument Information:

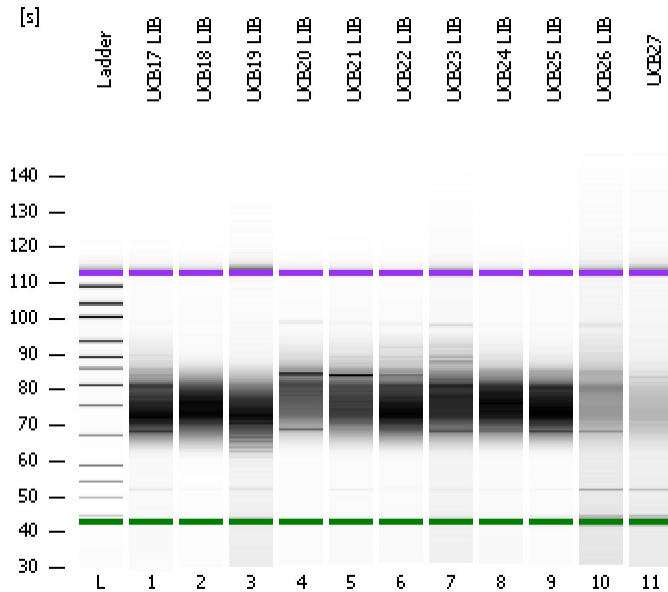
Instrument Name: DE13701086 Firmware: C.01.069
Serial#: DE13701086 Type: G2938B

Assay Information:

Assay Origin Path: C:\Program Files\Agilent\2100 bioanalyzer\2100 expert\assays\dsDNA\High Sensitivity DNA.xsy
Assay Class: High Sensitivity DNA Assay
Version: 1.03
Assay Comments: Copyright © 2003-2010 Agilent Technologies

Chip Information:

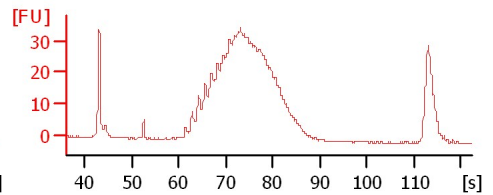
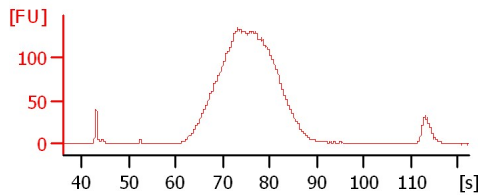
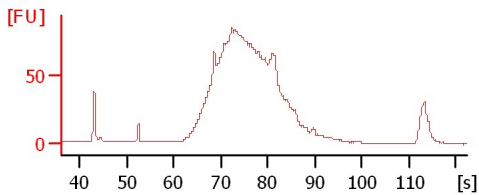
Chip Lot #:
Reagent Kit Lot #:
Chip Comments:



UCB17 LIB

UCB18 LIB

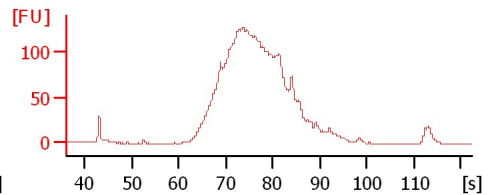
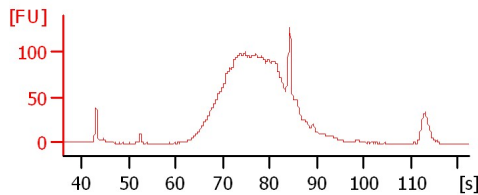
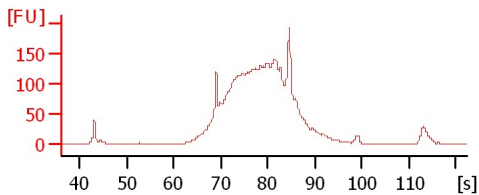
UCB19 LIB



UCB20 LIB

UCB21 LIB

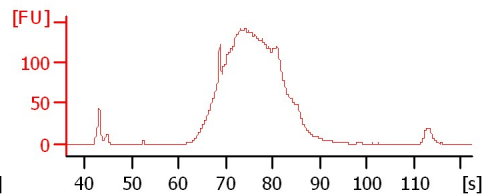
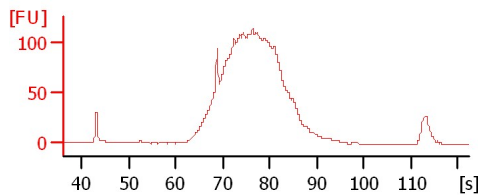
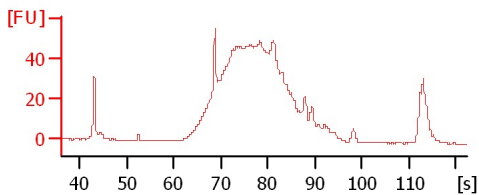
UCB22 LIB



UCB23 LIB

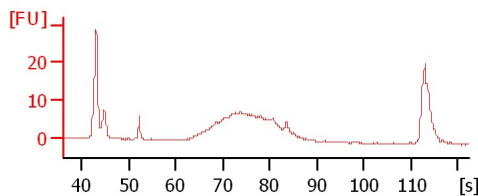
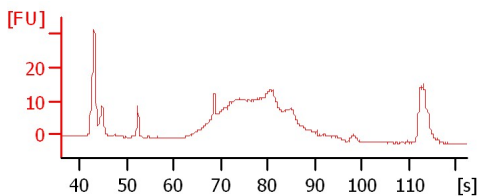
UCB24 LIB

UCB25 LIB



UCB26 LIB

UCB27



Assay Class: High Sensitivity DNA Assay
 Data Path: C:\...ents and Settings\Bioanalyzer\2012-02-29\2012-02-29_005.xad

Created: 2/29/2012 2:32:43 PM
 Modified: 2/29/2012 4:38:17 PM

Electrophoresis File Run Summary (Chip Summary)

Sample Name	Sample Comment	Rest. Digest	Status	Observation	Result Label	Result Color
UCB17 LIB		<input type="checkbox"/>	✓			
UCB18 LIB		<input type="checkbox"/>	✓			
UCB19 LIB		<input type="checkbox"/>	✓			
UCB20 LIB		<input type="checkbox"/>	✓			
UCB21 LIB		<input type="checkbox"/>	✓			
UCB22 LIB		<input type="checkbox"/>	✓			
UCB23 LIB		<input type="checkbox"/>	✓			
UCB24 LIB		<input type="checkbox"/>	✓			
UCB25 LIB		<input type="checkbox"/>	✓			
UCB26 LIB		<input type="checkbox"/>	✓			
UCB27		<input type="checkbox"/>	✓			
Ladder		<input type="checkbox"/>	✓			

Chip Lot #

Reagent Kit Lot #

Chip Comments :

Assay Class: High Sensitivity DNA Assay
 Data Path: C:\...ents and Settings\Bioanalyzer\2012-02-29\2012-02-29_005.xad

Created: 2/29/2012 2:32:43 PM
 Modified: 2/29/2012 4:38:17 PM

Electrophoresis Assay Details

General Analysis Settings

Number of Available Sample and Ladder Wells (Max.) : 12
 Minimum Visible Range [s] : 32
 Maximum Visible Range [s] : 138
 Start Analysis Time Range [s] : 33
 End Analysis Time Range [s] : 137.5
 Ladder Concentration [pg/μl] : 1950
 Uses Standard Area for Ladder Fragments
 Lower Marker Concentration [pg/μl] : 125
 Upper Marker Concentration [pg/μl] : 75
 Used Upper Marker for Quantitation
 Standard Curve Fit is Point to Point
 Show Data Aligned to Lower and Upper Marker

Integrator Settings

Integration Start Time [s] : 33.05
 Integration End Time [s] : 137
 Slope Threshold : 0.8
 Height Threshold [FU] : 5
 Area Threshold : 0.1
 Width Threshold [s] : 0.6
 Baseline Plateau [s] : 0.5

Filter Settings

Filter Width [s] : 0.5
 Polynomial Order : 4

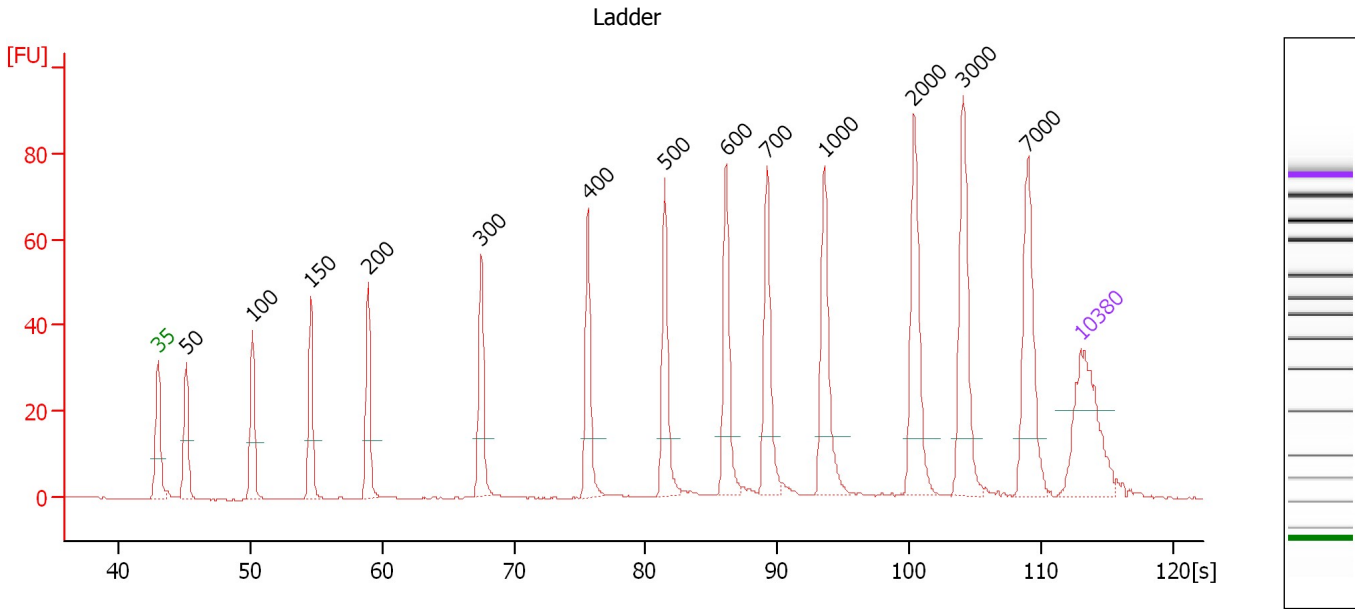
Ladder

Ladder Peak	Size	Area
1	35	160
2	50	210
3	100	208
4	150	221
5	200	242
6	300	270
7	400	305
8	500	306
9	600	336
10	700	321
11	1000	366
12	2000	413
13	3000	411
14	7000	400
15	10380	214

Assay Class: High Sensitivity DNA Assay
 Data Path: C:\...ents and Settings\Bioanalyzer\2012-02-29\2012-02-29_005.xad

Created: 2/29/2012 2:32:43 PM
 Modified: 2/29/2012 4:38:17 PM

Electropherogram Summary



Overall Results for Ladder

Noise: 0.1

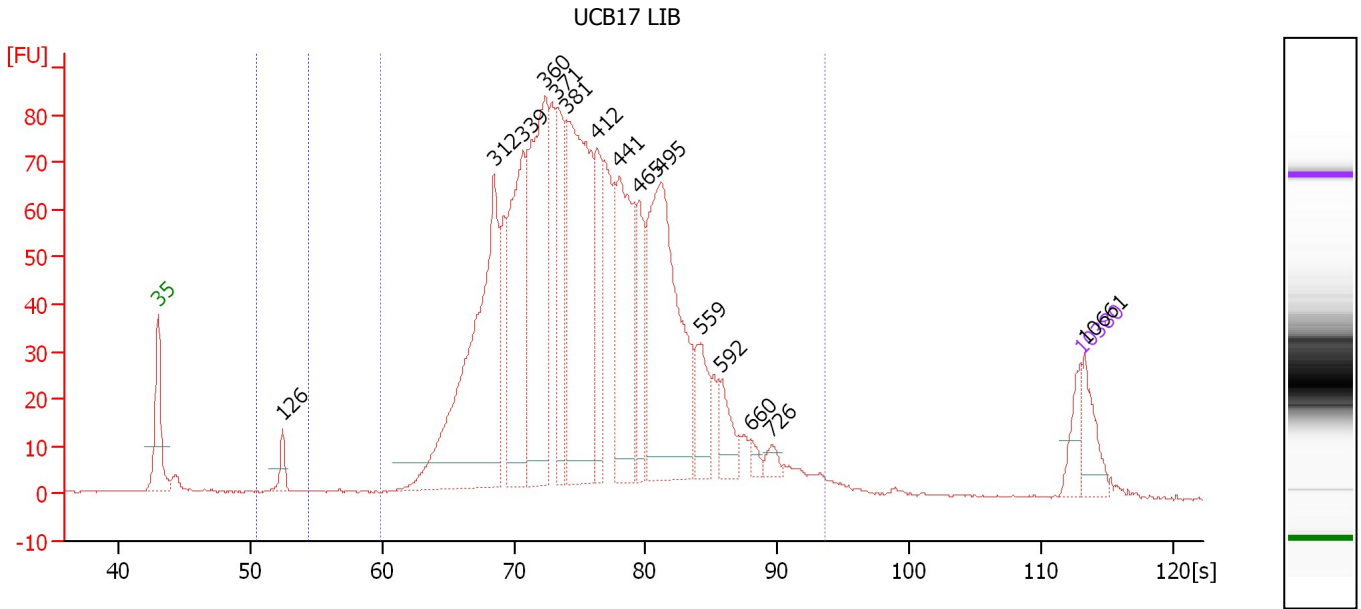
Peak table for Ladder

Peak	Size [bp]	Conc. [pg/μl]	Molarity [pmol/l]	Observations
1	35	125.00	5,411.3	Lower Marker
2	50	150.00	4,545.5	Ladder Peak
3	100	150.00	2,272.7	Ladder Peak
4	150	150.00	1,515.2	Ladder Peak
5	200	150.00	1,136.4	Ladder Peak
6	300	150.00	757.6	Ladder Peak
7	400	150.00	568.2	Ladder Peak
8	500	150.00	454.5	Ladder Peak
9	600	150.00	378.8	Ladder Peak
10	700	150.00	324.7	Ladder Peak
11	1,000	150.00	227.3	Ladder Peak
12	2,000	150.00	113.6	Ladder Peak
13	3,000	150.00	75.8	Ladder Peak
14	7,000	150.00	32.5	Ladder Peak
15	10,380	75.00	10.9	Upper Marker

Assay Class: High Sensitivity DNA Assay
 Data Path: C:\...ents and Settings\Bioanalyzer\2012-02-29\2012-02-29_005.xad

Created: 2/29/2012 2:32:43 PM
 Modified: 2/29/2012 4:38:17 PM

Electropherogram Summary Continued ...



Overall Results for sample 1 : UCB17 LIB

Number of peaks found: 15 Corr. Area 1: 1,693.4
 Noise: 0.2 Corr. Area 2: 16.1

Peak table for sample 1 : UCB17 LIB

Peak	Size [bp]	Conc. [pg/μl]	Molarity [pmol/l]	Observations
1	35	125.00	5,411.3	Lower Marker
2	126	70.40	847.6	
3	312	1,221.43	5,927.3	
4	339	647.92	2,895.3	
5	360	875.86	3,685.4	
6	371	368.37	1,506.1	
7	381	958.44	3,810.6	
8	412	262.25	964.8	
9	441	556.14	1,910.5	
10	465	238.30	775.8	
11	495	972.87	2,980.2	
12	559	167.57	454.3	
13	592	110.98	284.0	
14	660	29.42	67.5	
15	726	35.21	73.5	
16	10,380	75.00	10.9	Upper Marker
17	10,661	0.00	0.0	

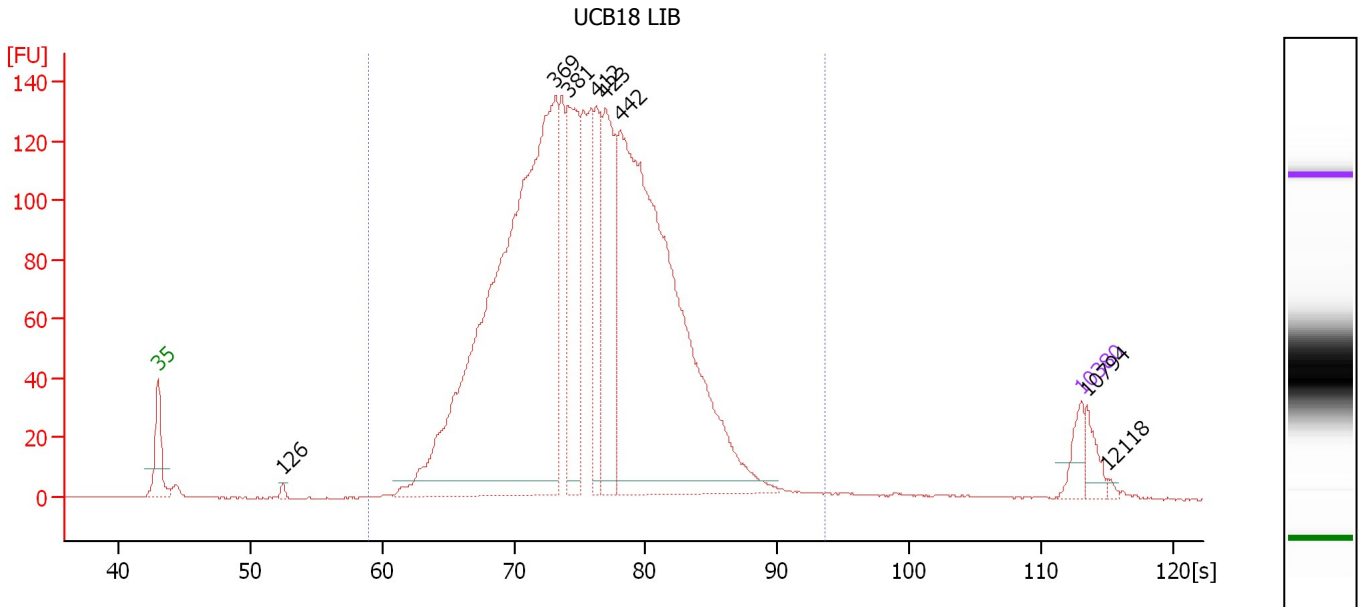
Region table for sample 1 : UCB17 LIB

From [s]	Molarity [pmol/l]	Average Size [bp]	Conc. [pg/μl]	To [s]	Corr. Area	% of Total	Size distribution in CV [%]	Color
50.38	1,301.1	125	107.75	54.41	16.1	1	6.5	Blue
59.86	32,038.4	420	8,212.34	93.55	1,693.4	94	25.8	Dark Blue

Assay Class: High Sensitivity DNA Assay
 Data Path: C:\...ents and Settings\Bioanalyzer\2012-02-29\2012-02-29_005.xad

Created: 2/29/2012 2:32:43 PM
 Modified: 2/29/2012 4:38:17 PM

Electropherogram Summary Continued ...



Overall Results for sample 2 : UCB18 LIB

Number of peaks found: 8 Corr. Area 1: 2,615.9
 Noise: 0.2

Peak table for sample 2 : UCB18 LIB

Peak	Size [bp]	Conc. [pg/μl]	Molarity [pmol/l]	Observations
1	35	125.00	5,411.3	Lower Marker
2	126	19.33	231.8	
3	369	3,659.33	15,009.9	
4	381	672.05	2,669.7	
5	412	376.70	1,386.0	
6	423	641.58	2,299.9	
7	442	2,922.53	10,020.7	
8	10,380	75.00	10.9	Upper Marker
9	10,794	0.00	0.0	
10	12,118	0.00	0.0	

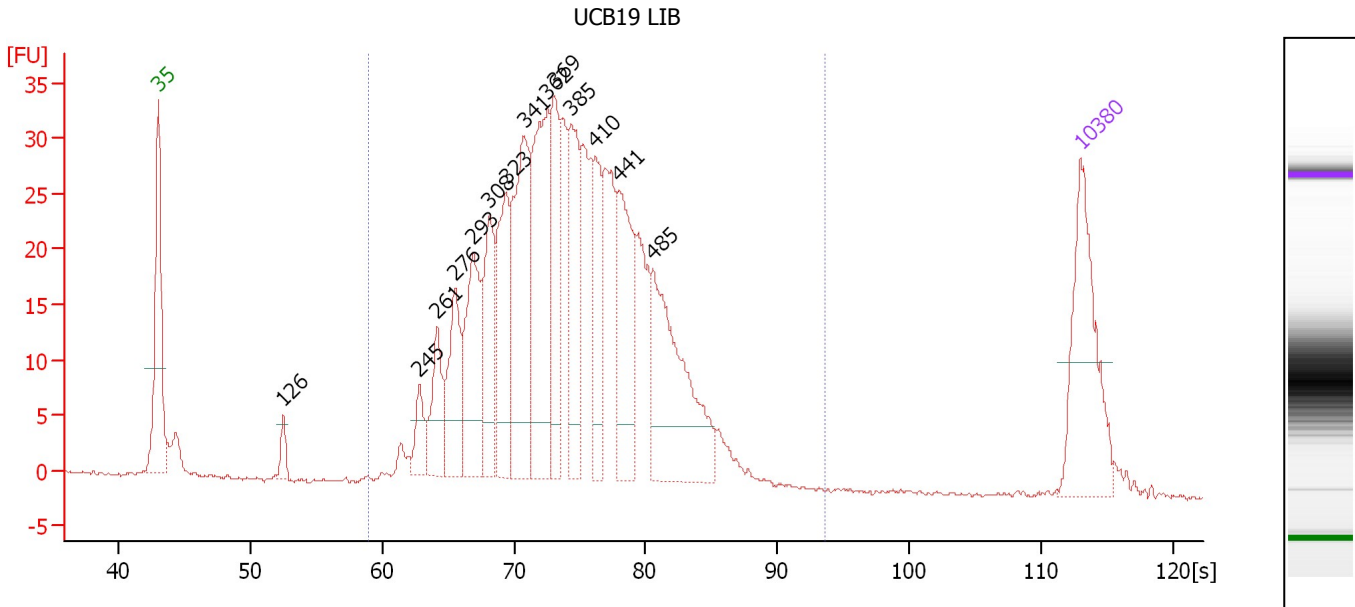
Region table for sample 2 : UCB18 LIB

From [s]	Molarity [pmol/l]	Average Size [bp]	Conc. [pg/μl]	To [s]	Corr. Area	% of Total	Size distribution in CV [%]	Color
58.95	37,493.4	410	9,554.29	93.55	2,615.9	97	21.5	Blue

Assay Class: High Sensitivity DNA Assay
 Data Path: C:\...ents and Settings\Bioanalyzer\2012-02-29\2012-02-29_005.xad

Created: 2/29/2012 2:32:43 PM
 Modified: 2/29/2012 4:38:17 PM

Electropherogram Summary Continued ...



Overall Results for sample 3 : UCB19 LIB

Number of peaks found: 14 Corr. Area 1: 646.1
 Noise: 0.2

Peak table for sample 3 : UCB19 LIB

Peak	Size [bp]	Conc. [pg/μl]	Molarity [pmol/l]	Observations
1	35	125.00	5,411.3	Lower Marker
2	126	12.98	155.9	
3	245	23.13	143.1	
4	261	42.73	247.8	
5	276	61.38	336.4	
6	293	84.98	439.7	
7	308	72.42	356.4	
8	323	83.32	390.4	
9	341	122.67	545.5	
10	362	132.31	553.2	
11	369	71.30	293.1	
12	385	80.93	318.8	
13	410	56.09	207.5	
14	441	84.20	289.0	
15	485	131.85	412.3	
16	10,380	75.00	10.9	Upper Marker

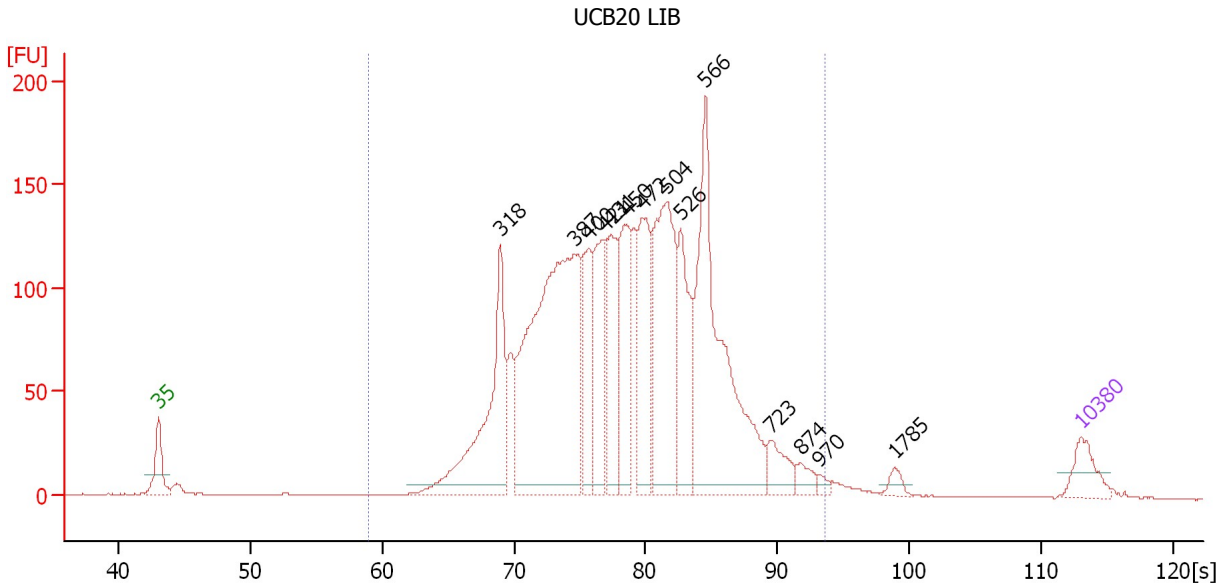
Region table for sample 3 : UCB19 LIB

From [s]	Molarity [pmol/l]	Average Size [bp]	Conc. [pg/μl]	To [s]	Corr. Area	% of Total	Size distribution in CV [%]	Color
58.95	5,687.0	388	1,370.50	93.55	646.1	98	20.9	Blue

Assay Class: High Sensitivity DNA Assay
 Data Path: C:\...ents and Settings\Bioanalyzer\2012-02-29\2012-02-29_005.xad

Created: 2/29/2012 2:32:43 PM
 Modified: 2/29/2012 4:38:17 PM

Electropherogram Summary Continued ...



Overall Results for sample 4 : UCB20 LIB

Number of peaks found: 14 Corr. Area 1: 2,856.1
 Noise: 0.1

Peak table for sample 4 : UCB20 LIB

Peak	Size [bp]	Conc. [pg/μl]	Molarity [pmol/l]	Observations
1	35	125.00	5,411.3	Lower Marker
2	318	607.98	2,897.2	
3	387	1,345.46	5,262.0	
4	400	267.93	1,013.9	
5	421	306.39	1,102.8	
6	431	311.28	1,094.8	
7	450	316.45	1,066.6	
8	472	353.83	1,136.1	
9	504	631.99	1,900.1	
10	526	333.21	959.5	
11	566	914.04	2,446.1	
12	723	98.98	207.4	
13	874	42.98	74.5	
14	970	15.25	23.8	
15	1,785	24.21	20.6	
16	10,380	75.00	10.9	Upper Marker

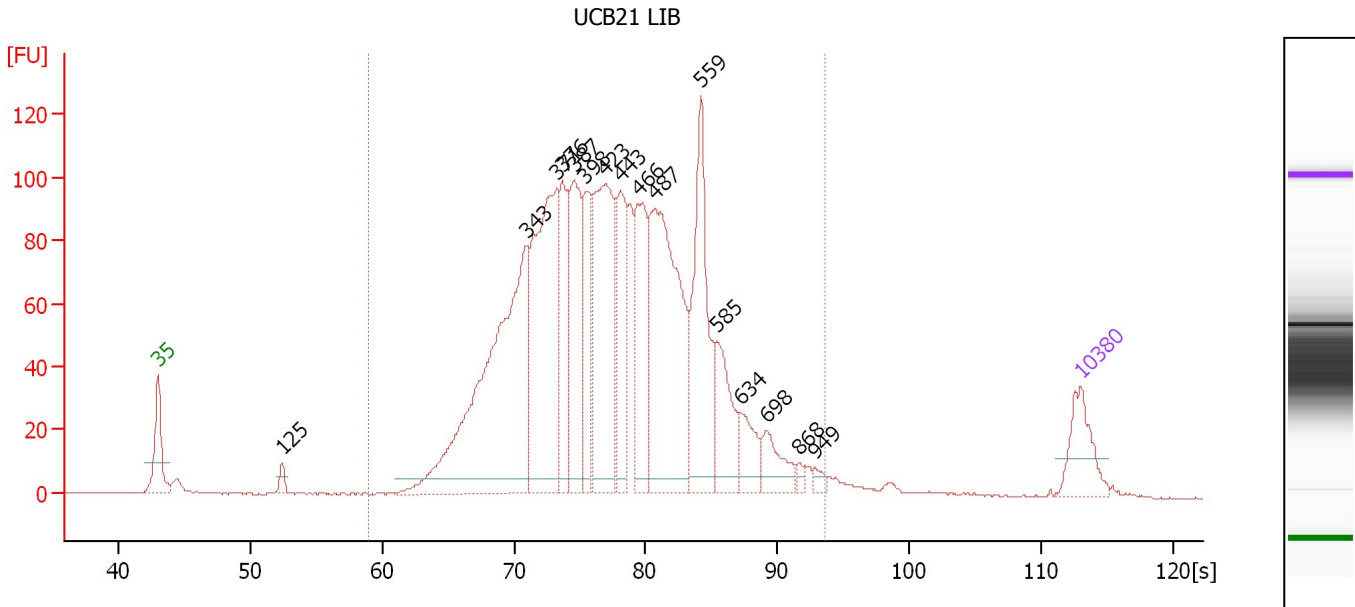
Region table for sample 4 : UCB20 LIB

From [s]	Molarity [pmol/l]	Average Size [bp]	Conc. [pg/μl]	To [s]	Corr. Area	% of Total	Size distribution in CV [%]	Color
58.95	21,566.0	463	6,088.47	93.55	2,856.1	98	25.0	Blue

Assay Class: High Sensitivity DNA Assay
 Data Path: C:\...ents and Settings\Bioanalyzer\2012-02-29\2012-02-29_005.xad

Created: 2/29/2012 2:32:43 PM
 Modified: 2/29/2012 4:38:17 PM

Electropherogram Summary Continued ...



Overall Results for sample 5 : UCB21 LIB

Number of peaks found: 16 Corr. Area 1: 2,150.9
 Noise: 0.2

Peak table for sample 5 : UCB21 LIB

Peak	Size [bp]	Conc. [pg/μl]	Molarity [pmol/l]	Observations
1	35	125.00	5,411.3	Lower Marker
2	125	17.61	212.7	
3	343	766.53	3,390.8	
4	371	504.47	2,058.0	
5	376	166.33	670.2	
6	387	261.65	1,023.9	
7	398	155.61	592.9	
8	423	377.34	1,350.8	
9	443	181.58	620.6	
10	466	214.76	698.0	
11	487	525.11	1,633.2	
12	559	302.16	819.1	
13	585	121.60	314.9	
14	634	70.63	168.7	
15	698	66.21	143.7	
16	868	10.76	18.8	
17	949	11.78	18.8	
18	10,380	75.00	10.9	Upper Marker

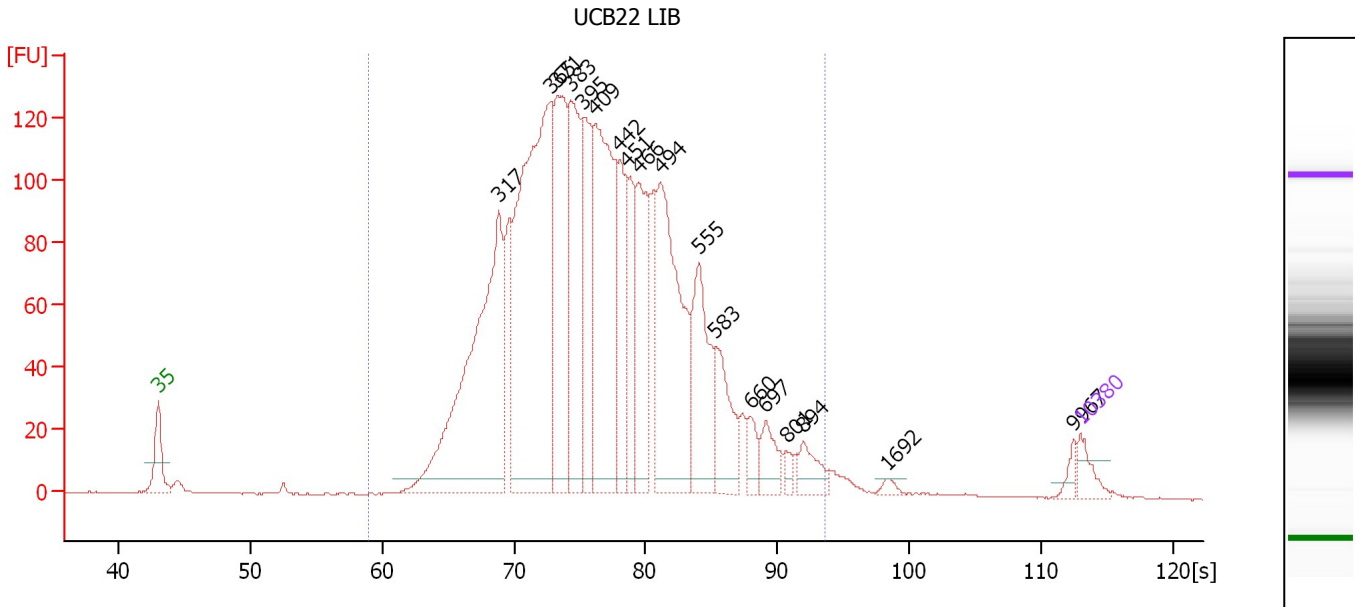
Region table for sample 5 : UCB21 LIB

From [s]	Molarity [pmol/l]	Average Size [bp]	Conc. [pg/μl]	To [s]	Corr. Area % of Total	Size distribution in CV [%]	Color
58.95	14,724.7	445	3,992.58	93.55	2,150.9	97	25.7

Assay Class: High Sensitivity DNA Assay
 Data Path: C:\...ents and Settings\Bioanalyzer\2012-02-29\2012-02-29_005.xad

Created: 2/29/2012 2:32:43 PM
 Modified: 2/29/2012 4:38:17 PM

Electropherogram Summary Continued ...



Overall Results for sample 6 : UCB22 LIB

Number of peaks found: 18 Corr. Area 1: 2,567.9
 Noise: 0.1

Peak table for sample 6 : UCB22 LIB

Peak	Size [bp]	Conc. [pg/μl]	Molarity [pmol/l]	Observations
1	35	125.00	5,411.3	Lower Marker
2	317	1,904.62	9,117.8	
3	365	2,243.72	9,326.3	
4	371	925.29	3,777.0	
5	383	796.69	3,150.2	
6	395	553.63	2,122.6	
7	409	1,285.53	4,761.4	
8	442	431.43	1,480.5	
9	451	411.30	1,382.4	
10	466	577.35	1,878.7	
11	494	1,197.93	3,671.5	
12	555	560.67	1,530.1	
13	583	313.90	816.0	
14	660	103.99	238.8	
15	697	149.33	324.8	
16	801	42.39	80.2	
17	894	121.16	205.4	
18	1,692	21.36	19.1	
19	9,967	39.10	5.9	
20	10,380	75.00	10.9	Upper Marker

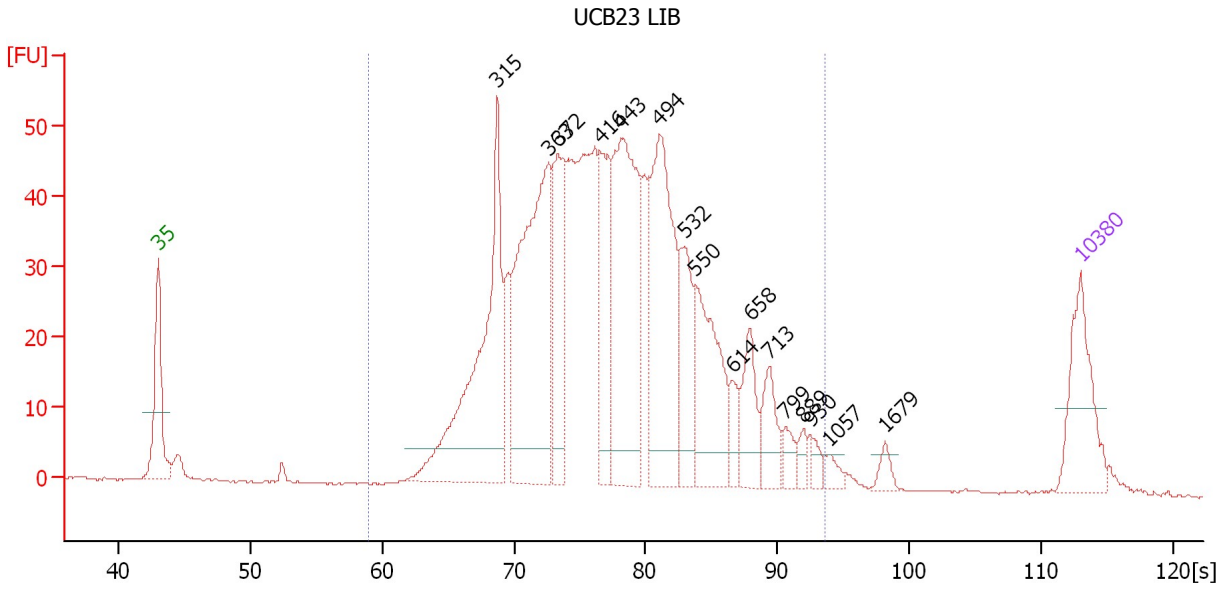
Region table for sample 6 : UCB22 LIB

From [s]	Molarity [pmol/l]	Average Size [bp]	Conc. [pg/μl]	To [s]	Corr. Area	% of Total	Size distribution in CV [%]	Color
58.95	47,626.5	432	12,493.47	93.55	2,567.9	98	27.1	Blue

Assay Class: High Sensitivity DNA Assay
 Data Path: C:\...ents and Settings\Bioanalyzer\2012-02-29\2012-02-29_005.xad

Created: 2/29/2012 2:32:43 PM
 Modified: 2/29/2012 4:38:17 PM

Electropherogram Summary Continued ...



Overall Results for sample 7 : UCB23 LIB

Number of peaks found: 16 Corr. Area 1: 1,075.8
 Noise: 0.1

Peak table for sample 7 : UCB23 LIB

Peak	Size [bp]	Conc. [pg/μl]	Molarity [pmol/l]	Observations
1	35	125.00	5,411.3	Lower Marker
2	315	320.29	1,540.0	
3	363	338.94	1,415.6	
4	372	123.17	501.4	
5	416	108.98	396.6	
6	443	280.39	958.2	
7	494	248.03	761.1	
8	532	83.72	238.6	
9	550	135.65	373.6	
10	614	22.68	56.0	
11	658	56.03	128.9	
12	713	45.66	97.1	
13	799	17.59	33.4	
14	889	12.20	20.8	
15	930	11.91	19.4	
16	1,057	11.29	16.2	
17	1,679	10.57	9.5	
18	10,380	75.00	10.9	Upper Marker

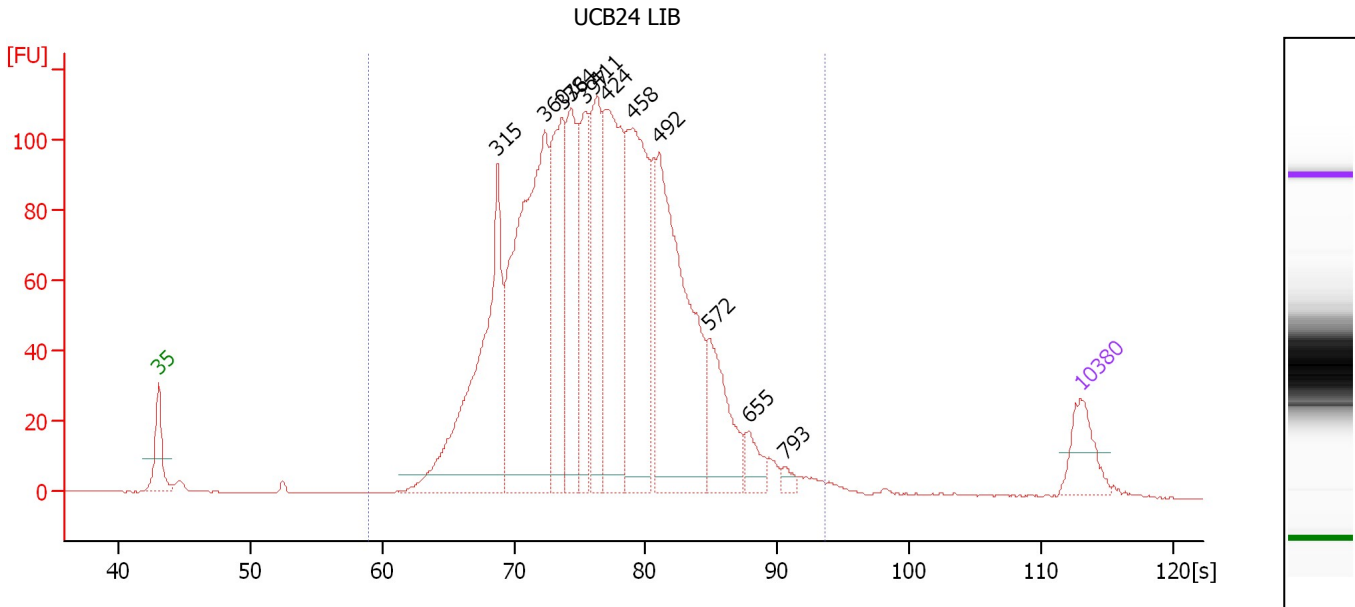
Region table for sample 7 : UCB23 LIB

From [s]	Molarity [pmol/l]	Average Size [bp]	Conc. [pg/μl]	To [s]	Corr. Area % of Total	Size distribution in CV [%]	Color
58.95	8,613.1	449	2,328.25	93.55	1,075.8	97	28.0

Assay Class: High Sensitivity DNA Assay
 Data Path: C:\...ents and Settings\Bioanalyzer\2012-02-29\2012-02-29_005.xad

Created: 2/29/2012 2:32:43 PM
 Modified: 2/29/2012 4:38:17 PM

Electropherogram Summary Continued ...



Overall Results for sample 8 : UCB24 LIB

Number of peaks found: 12 Corr. Area 1: 2,176.7
 Noise: 0.1

Peak table for sample 8 : UCB24 LIB

Peak	Size [bp]	Conc. [pg/μl]	Molarity [pmol/l]	Observations
1	35	125.00	5,411.3	Lower Marker
2	315	664.50	3,195.3	
3	360	874.93	3,685.9	
4	376	368.17	1,484.2	
5	384	288.88	1,140.0	
6	397	247.57	943.8	
7	411	285.03	1,049.5	
8	424	479.92	1,716.2	
9	458	515.43	1,703.6	
10	492	695.14	2,139.8	
11	572	189.17	501.1	
12	655	52.36	121.1	
13	793	17.17	32.8	
14	10,380	75.00	10.9	Upper Marker

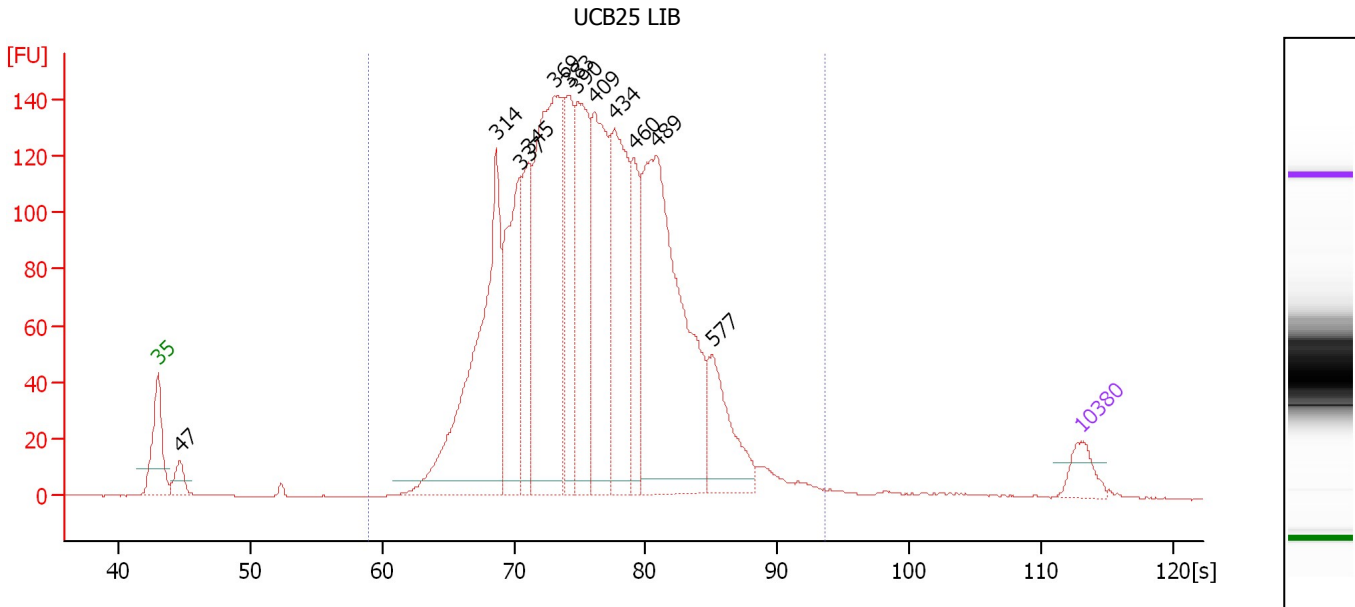
Region table for sample 8 : UCB24 LIB

From [s]	Molarity [pmol/l]	Average Size [bp]	Conc. [pg/μl]	To [s]	Corr. Area	% of Total	Size distribution in CV [%]	Color
58.95	18,587.0	428	4,915.59	93.55	2,176.7	99	23.6	■

Assay Class: High Sensitivity DNA Assay
 Data Path: C:\...ents and Settings\Bioanalyzer\2012-02-29\2012-02-29_005.xad

Created: 2/29/2012 2:32:43 PM
 Modified: 2/29/2012 4:38:17 PM

Electropherogram Summary Continued ...



Overall Results for sample 9 : UCB25 LIB

Number of peaks found: 12 Corr. Area 1: 2,730.9
 Noise: 0.2

Peak table for sample 9 : UCB25 LIB

Peak	Size [bp]	Conc. [pg/μl]	Molarity [pmol/l]	Observations
1	35	125.00	5,411.3	Lower Marker
2	47	90.68	2,946.6	
3	314	1,230.04	5,936.5	
4	337	628.64	2,825.9	
5	345	382.64	1,682.7	
6	369	1,318.72	5,414.6	
7	383	455.68	1,804.5	
8	390	642.49	2,495.5	
9	409	706.66	2,618.4	
10	434	708.78	2,472.0	
11	460	325.08	1,070.8	
12	489	1,500.29	4,646.1	
13	577	312.14	819.5	
14	10,380	75.00	10.9	Upper Marker

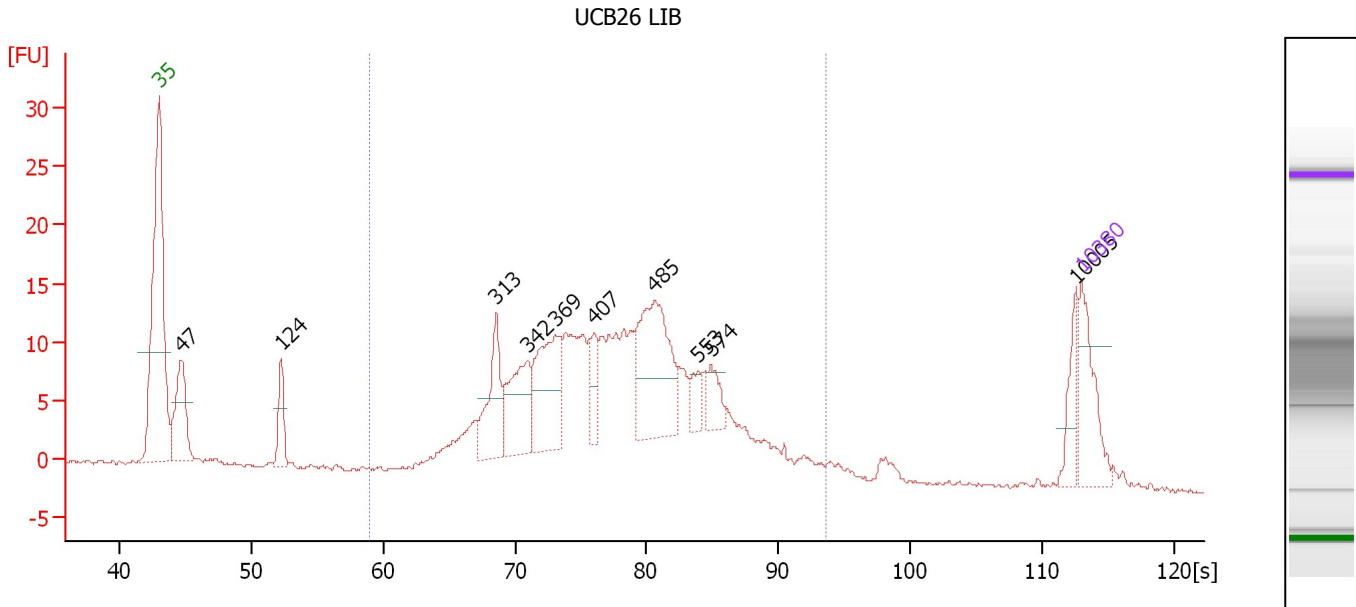
Region table for sample 9 : UCB25 LIB

From [s]	Molarity [pmol/l]	Average Size [bp]	Conc. [pg/μl]	To [s]	Corr. Area	% of Total	Size distribution in CV [%]	Color
58.95	32,657.6	418	8,468.50	93.55	2,730.9	98	22.8	Blue

Assay Class: High Sensitivity DNA Assay
 Data Path: C:\...ents and Settings\Bioanalyzer\2012-02-29\2012-02-29_005.xad

Created: 2/29/2012 2:32:43 PM
 Modified: 2/29/2012 4:38:17 PM

Electropherogram Summary Continued ...



Overall Results for sample 10 : UCB26 LIB

Number of peaks found: 10 Corr. Area 1: 286.2
 Noise: 0.2

Peak table for sample 10 : UCB26 LIB

Peak	Size [bp]	Conc. [pg/μl]	Molarity [pmol/l]	Observations
1	35	125.00	5,411.3	Lower Marker
2	47	127.29	4,134.7	
3	124	55.67	681.6	
4	313	99.02	479.2	
5	342	108.49	480.1	
6	369	135.15	555.0	
7	407	42.75	159.1	
8	485	193.09	603.7	
9	553	25.74	70.6	
10	574	32.56	86.0	
11	10,005	37.75	5.7	
12	10,380	75.00	10.9	Upper Marker

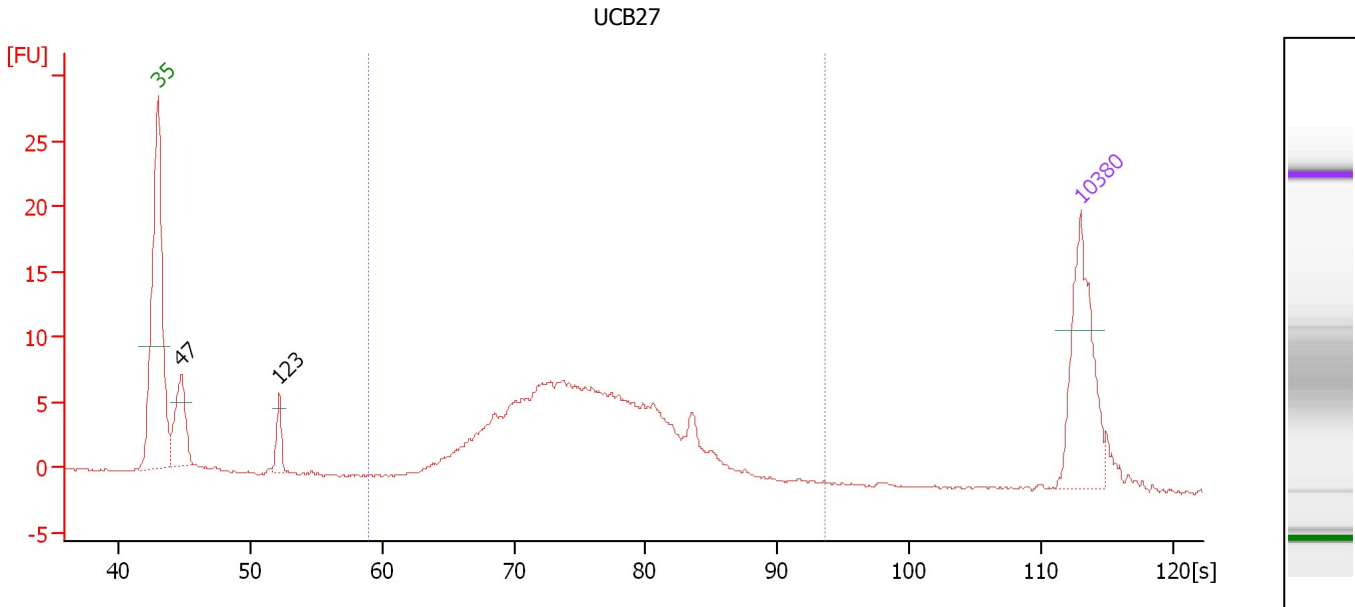
Region table for sample 10 : UCB26 LIB

From [s]	Molarity [pmol/l]	Average Size [bp]	Conc. [pg/μl]	To [s]	Corr. Area % of Total	Size distribution in CV [%]	Color	
58.95	5,521.7	451	1,501.05	93.55	286.2	85	27.3	Blue

Assay Class: High Sensitivity DNA Assay
 Data Path: C:\...ents and Settings\Bioanalyzer\2012-02-29\2012-02-29_005.xad

Created: 2/29/2012 2:32:43 PM
 Modified: 2/29/2012 4:38:17 PM

Electropherogram Summary Continued ...



Overall Results for sample 11 : UCB27

Number of peaks found: 2 Corr. Area 1: 142.2
 Noise: 0.1

Peak table for sample 11 : UCB27

Peak	Size [bp]	Conc. [pg/μl]	Molarity [pmol/l]	Observations
1	35	125.00	5,411.3	Lower Marker
2	47	63.93	2,055.2	
3	123	21.24	262.3	
4	10,380	75.00	10.9	Upper Marker

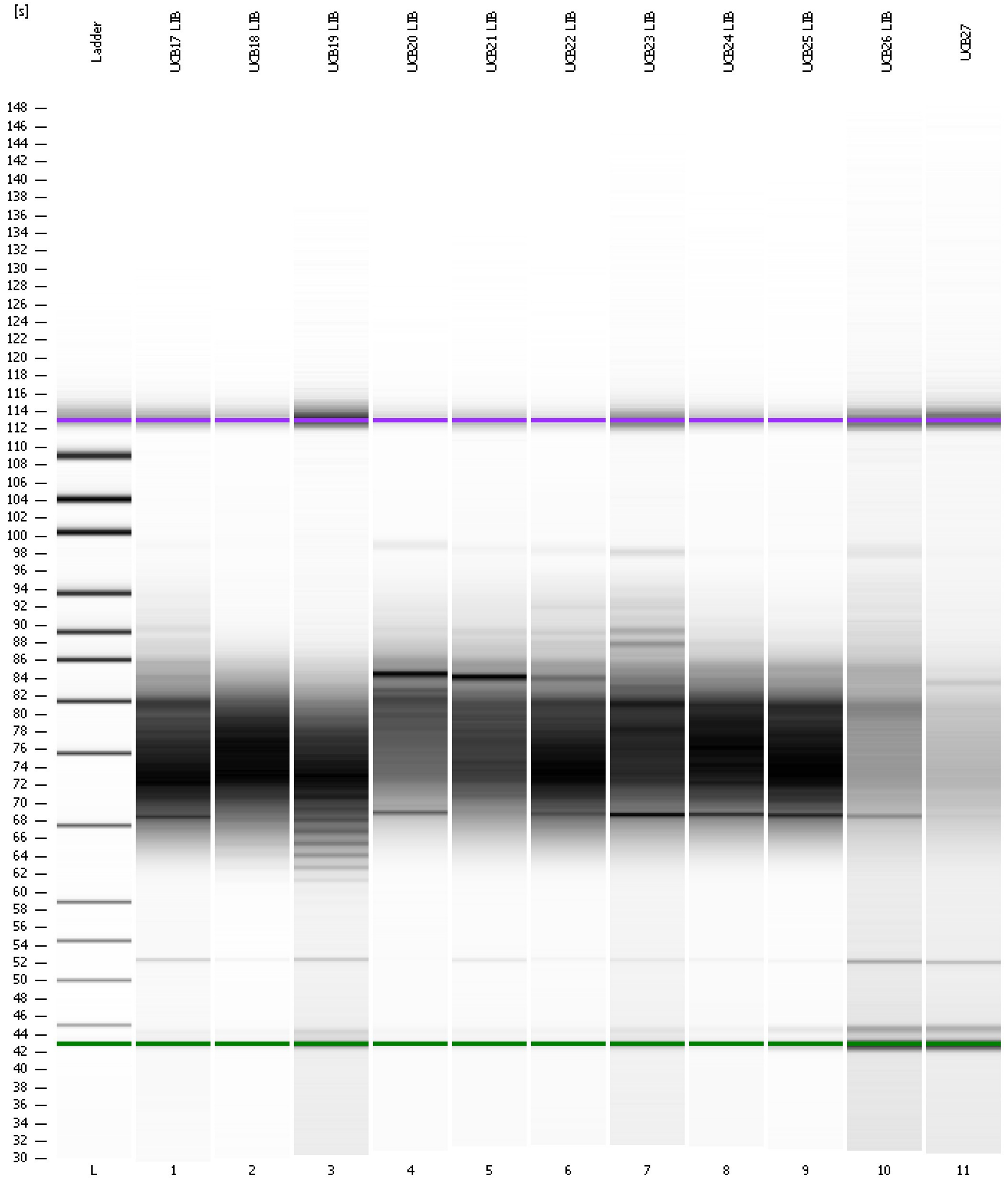
Region table for sample 11 : UCB27

From [s]	Molarity [pmol/l]	Average Size [bp]	Conc. [pg/μl]	To [s]	Corr. Area	% of Total	Size distribution in CV [%]	Color
58.95	1,871.0	414	478.85	93.55	142.2	84	23.2	Blue

Assay Class: High Sensitivity DNA Assay
Data Path: C:\...ents and Settings\Bioanalyzer\2012-02-29\2012-02-29_005.xad

Created: 2/29/2012 2:32:43 PM
Modified: 2/29/2012 4:38:17 PM

Gel Image

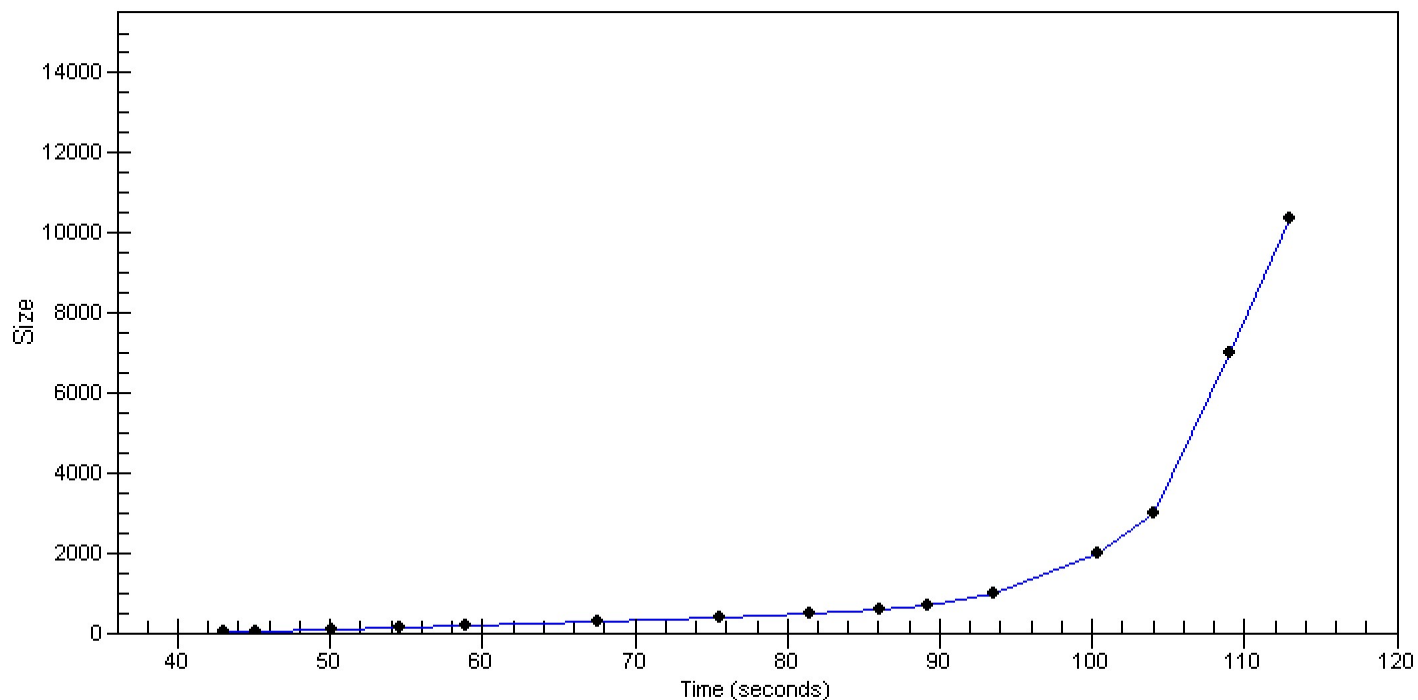


Assay Class: High Sensitivity DNA Assay
Data Path: C:\...ents and Settings\Bioanalyzer\2012-02-29\2012-02-29_005.xad

Created: 2/29/2012 2:32:43 PM
Modified: 2/29/2012 4:38:17 PM

Curves

Standard Curve



Assay Class: High Sensitivity DNA Assay
 Data Path: C:\...ents and Settings\Bioanalyzer\2012-02-29\2012-02-29_005.xad

Created: 2/29/2012 2:32:43 PM
 Modified: 2/29/2012 4:38:17 PM

Run Logbook

Description	Number	Source	Category	Sub Category	Time	Time Zone	User	Host
Run ended on port 1 (Number of wells acquired: 12)		Instrument	Run		2/29/2012 3:14:01 PM	(GMT --08:00) Pacific Standard Time	UC Davis	D8XSMGH1
Run started on port 1 (File: C:\Documents and Settings\Bioanalyzer\2012-02-29\2012-02-29_005.xad)		Instrument	Run		2/29/2012 2:32:49 PM	(GMT --08:00) Pacific Standard Time	UC Davis	D8XSMGH1
Product Number : G2938B		Instrument	Run		2/29/2012 2:32:49 PM	(GMT --08:00) Pacific Standard Time	UC Davis	D8XSMGH1
Name :		Instrument	Run		2/29/2012 2:32:49 PM	(GMT --08:00) Pacific Standard Time	UC Davis	D8XSMGH1
Vendor : Agilent Technologies		Instrument	Run		2/29/2012 2:32:49 PM	(GMT --08:00) Pacific Standard Time	UC Davis	D8XSMGH1
Serial# : DE13701086		Instrument	Run		2/29/2012 2:32:49 PM	(GMT --08:00) Pacific Standard Time	UC Davis	D8XSMGH1
Firmware : C.01.069		Instrument	Run		2/29/2012 2:32:49 PM	(GMT --08:00) Pacific Standard Time	UC Davis	D8XSMGH1
Cartridge : Electrode		Instrument	Run		2/29/2012 2:32:49 PM	(GMT --08:00) Pacific Standard Time	UC Davis	D8XSMGH1