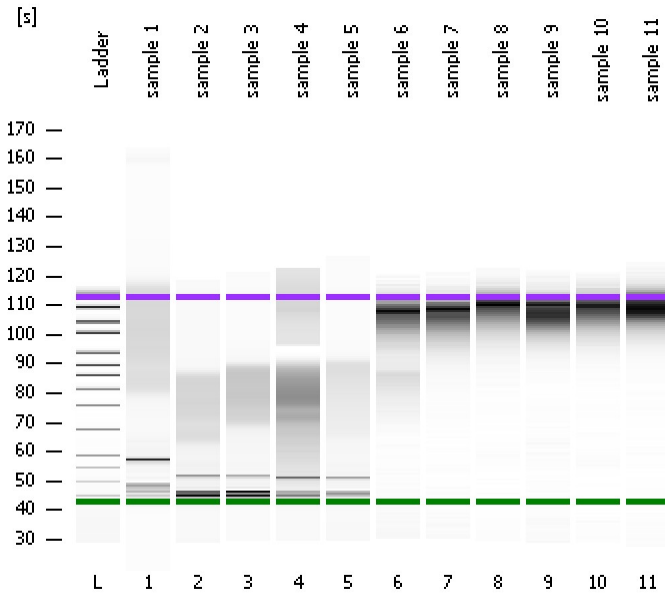


Assay Class: High Sensitivity DNA Assay
Data Path: C:\...ents and Settings\Bioanalyzer\2012-02-29\2012-02-29_006.xad

Created: 2/29/2012 3:40:33 PM
Modified: 2/29/2012 4:24:46 PM

Electrophoresis File Run Summary



Instrument Information:

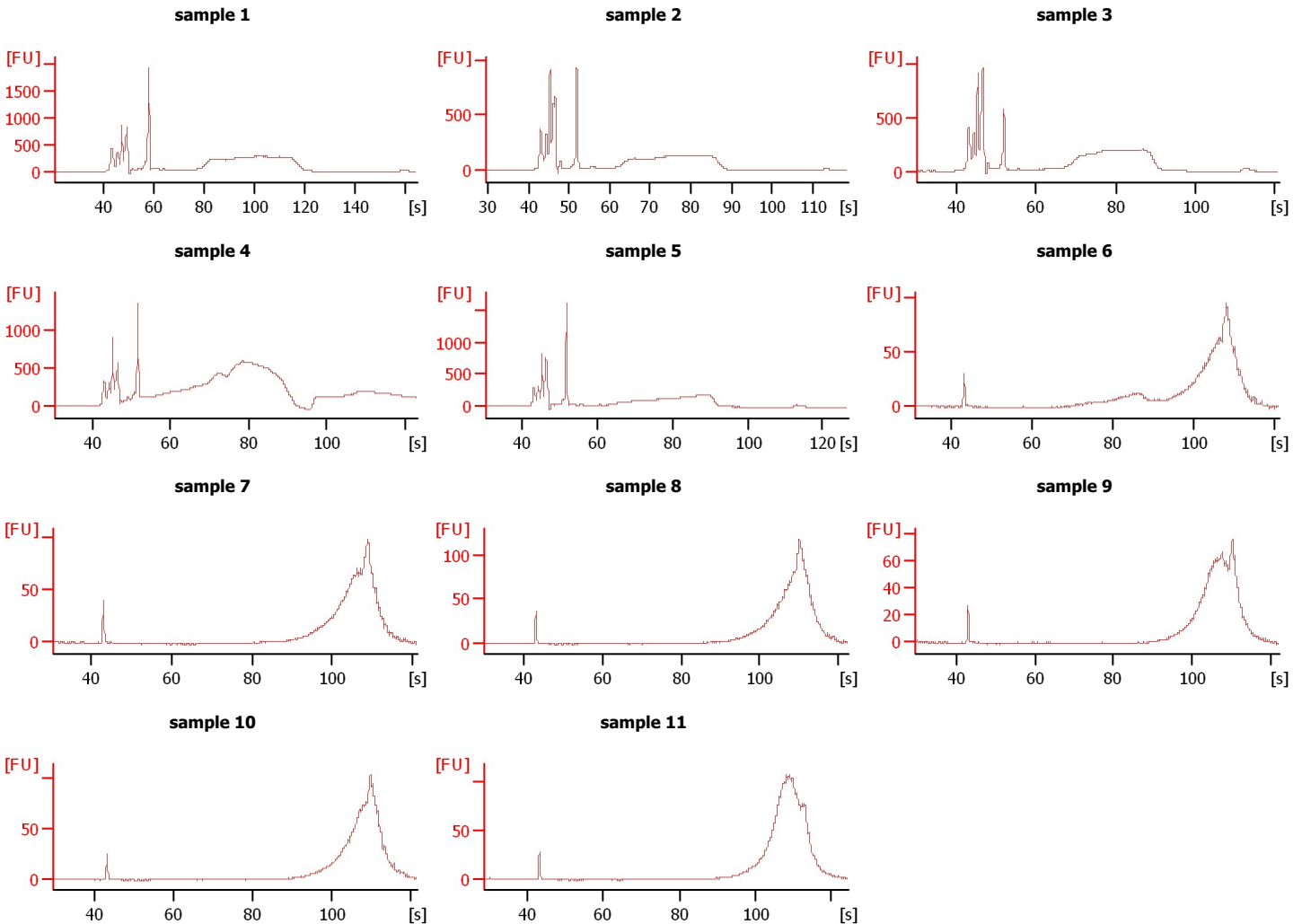
Instrument Name: DE13701086 Firmware: C.01.069
Serial#: DE13701086 Type: G2938B

Assay Information:

Assay Origin Path: C:\Program Files\Agilent\2100 bioanalyzer\2100 expert\assays\dsDNA\High Sensitivity DNA.xsy
Assay Class: High Sensitivity DNA Assay
Version: 1.03
Assay Comments: Copyright © 2003-2010 Agilent Technologies

Chip Information:

Chip Lot #: Reagent Kit Lot #: Chip Comments:



Assay Class: High Sensitivity DNA Assay
 Data Path: C:\...ents and Settings\Bioanalyzer\2012-02-29\2012-02-29_006.xad

Created: 2/29/2012 3:40:33 PM
 Modified: 2/29/2012 4:24:46 PM

Electrophoresis File Run Summary (Chip Summary)

Sample Name	Sample Comment	Rest. Digest	Status	Observation	Result Label	Result Color
sample 1		<input type="checkbox"/>	✓			
sample 2		<input type="checkbox"/>	✓			
sample 3		<input type="checkbox"/>	✓			
sample 4		<input type="checkbox"/>	✓			
sample 5		<input type="checkbox"/>	✓			
sample 6		<input type="checkbox"/>	✓			
sample 7		<input type="checkbox"/>	✓			
sample 8		<input type="checkbox"/>	✓			
sample 9		<input type="checkbox"/>	✓			
sample 10		<input type="checkbox"/>	✓			
sample 11		<input type="checkbox"/>	✓			
Ladder		<input type="checkbox"/>	✓			

Chip Lot #

Reagent Kit Lot #

Chip Comments :

Assay Class: High Sensitivity DNA Assay
Data Path: C:\...ents and Settings\Bioanalyzer\2012-02-29\2012-02-29_006.xad

Created: 2/29/2012 3:40:33 PM
Modified: 2/29/2012 4:24:46 PM

Electrophoresis Assay Details

General Analysis Settings

Number of Available Sample and Ladder Wells (Max.) : 12
Minimum Visible Range [s] : 32
Maximum Visible Range [s] : 138
Start Analysis Time Range [s] : 33
End Analysis Time Range [s] : 137.5
Ladder Concentration [pg/μl] : 1950
Uses Standard Area for Ladder Fragments
Lower Marker Concentration [pg/μl] : 125
Upper Marker Concentration [pg/μl] : 75
Used Upper Marker for Quantitation
Standard Curve Fit is Point to Point
Show Data Aligned to Lower and Upper Marker

Integrator Settings

Integration Start Time [s] : 33.05
Integration End Time [s] : 137
Slope Threshold : 0.8
Height Threshold [FU] : 5
Area Threshold : 0.1
Width Threshold [s] : 0.6
Baseline Plateau [s] : 0.5

Filter Settings

Filter Width [s] : 0.5
Polynomial Order : 4

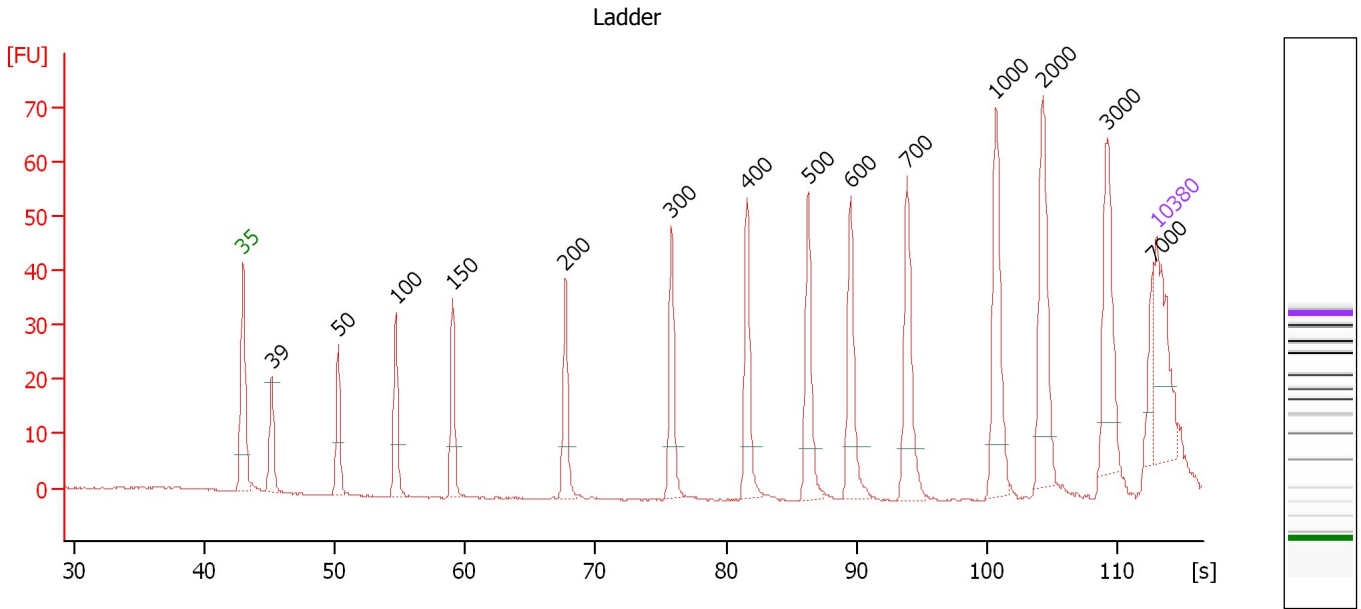
Ladder

Ladder Peak	Size	Area
1	35	160
2	50	210
3	100	208
4	150	221
5	200	242
6	300	270
7	400	305
8	500	306
9	600	336
10	700	321
11	1000	366
12	2000	413
13	3000	411
14	7000	400
15	10380	214

Assay Class: High Sensitivity DNA Assay
 Data Path: C:\...ents and Settings\Bioanalyzer\2012-02-29\2012-02-29_006.xad

Created: 2/29/2012 3:40:33 PM
 Modified: 2/29/2012 4:24:46 PM

Electropherogram Summary



Overall Results for Ladder

Noise: 0.1

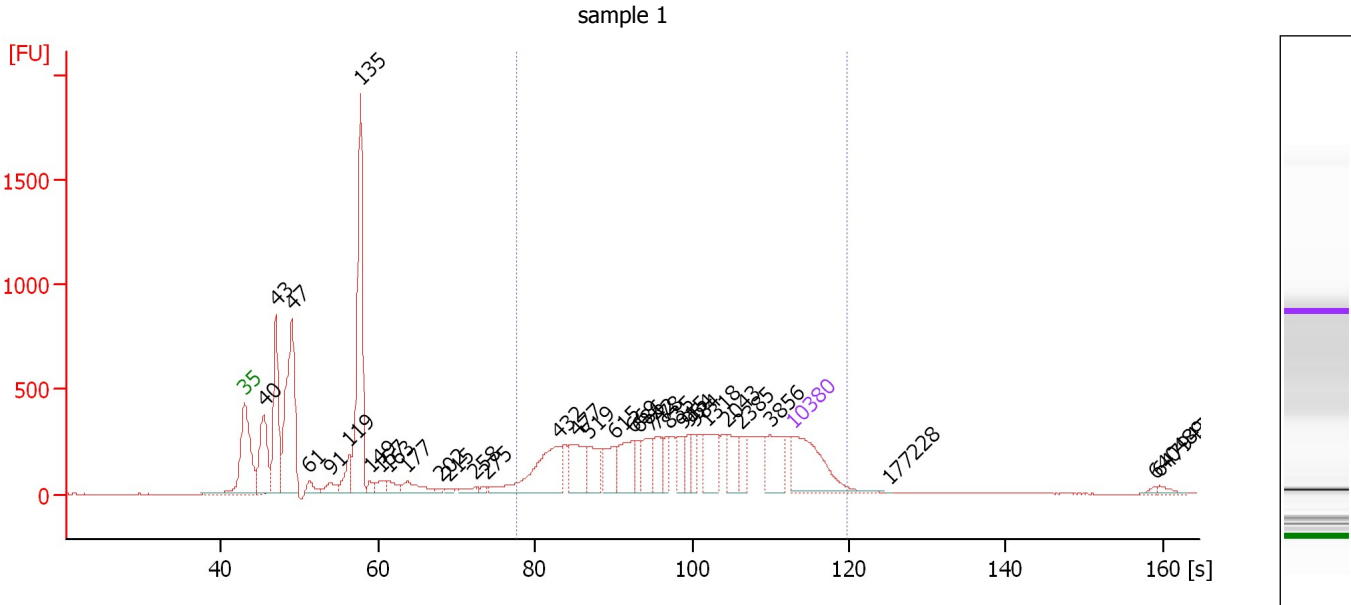
Peak table for Ladder

Peak	Size [bp]	Conc. [pg/μl]	Molarity [pmol/l]	Observations
1	35	125.00	5,411.3	Lower Marker
2	39	0.00	0.0	
3	50	150.00	4,545.5	Ladder Peak
4	100	150.00	2,272.7	Ladder Peak
5	150	150.00	1,515.2	Ladder Peak
6	200	150.00	1,136.4	Ladder Peak
7	300	150.00	757.6	Ladder Peak
8	400	150.00	568.2	Ladder Peak
9	500	150.00	454.5	Ladder Peak
10	600	150.00	378.8	Ladder Peak
11	700	150.00	324.7	Ladder Peak
12	1,000	150.00	227.3	Ladder Peak
13	2,000	150.00	113.6	Ladder Peak
14	3,000	150.00	75.8	Ladder Peak
15	7,000	150.00	32.5	Ladder Peak
16	10,380	75.00	10.9	Upper Marker

Assay Class: High Sensitivity DNA Assay
 Data Path: C:\...ents and Settings\Bioanalyzer\2012-02-29\2012-02-29_006.xad

Created: 2/29/2012 3:40:33 PM
 Modified: 2/29/2012 4:24:46 PM

Electropherogram Summary Continued ...



Overall Results for sample 1 : sample 1

Number of peaks found: 34 Corr. Area 1: 7,007.2
 Noise: 0.2

Peak table for sample 1 : sample 1

Peak	Size [bp]	Conc. [pg/μl]	Molarity [pmol/l]	Observations
1	35	125.00	5,411.3	Lower Marker
2	40	109.92	4,173.2	
3	43	148.95	5,232.2	
4	47	239.44	7,663.4	
5	61	16.20	403.4	
6	91	18.02	300.1	
7	119	34.58	440.2	
8	135	282.51	3,161.2	
9	149	8.91	90.8	
10	157	15.44	148.8	
11	163	14.05	130.5	
12	177	27.95	239.3	
13	202	4.08	30.6	
14	215	4.76	33.4	
15	258	8.71	51.1	
16	275	3.88	21.3	
17	432	102.12	358.1	
18	477	53.34	169.4	
19	519	34.70	101.2	
20	615	35.76	88.1	
21	669	46.80	106.1	
22	686	20.10	44.4	
23	742	33.98	69.4	
24	778	24.63	48.0	
25	835	19.32	35.1	
26	915	21.63	35.8	

Assay Class: High Sensitivity DNA Assay
 Data Path: C:\...ents and Settings\Bioanalyzer\2012-02-29\2012-02-29_006.xad


Created: 2/29/2012 3:40:33 PM
 Modified: 2/29/2012 4:24:46 PM

Electropherogram Summary Continued ...

... Peak table for sample 1 : sample 1

Peak	Size [bp]	Conc. [pg/μl]	Molarity [pmol/l]	Observations
27	954	18.56	29.5	
28	984	18.43	28.4	
29	1,318	41.69	47.9	
30	2,043	27.33	20.3	
31	2,385	18.47	11.7	
32	3,856	42.31	16.6	
33	10,380	75.00	10.9	Upper Marker
34	177,229	0.00	0.0	
35	640,489	0.00	0.0	
36	647,947	0.00	0.0	

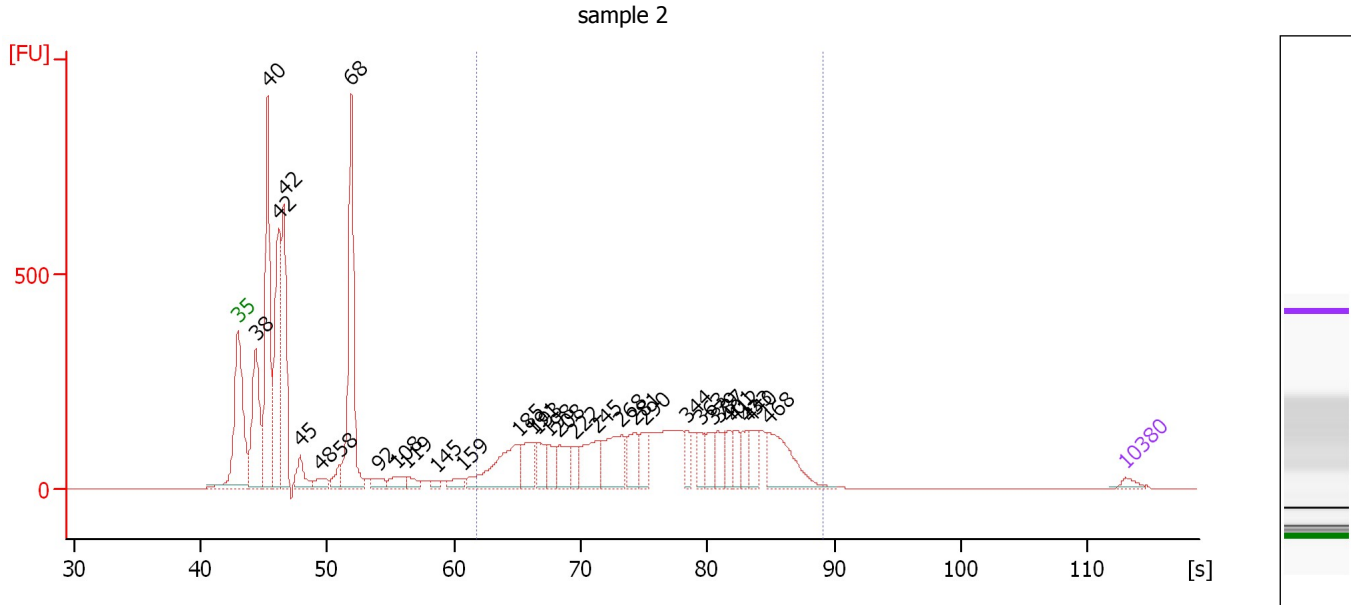
Region table for sample 1 : sample 1

From [s]	Molarity [pmol/l]	Average Size [bp]	Conc. [pg/μl]	To [s]	Corr. Area	% of Total	Size distribution in CV [%]	Color
77.72	1,362.1	6,494	672.82	119.82	7,007.2	53	100.0	

Assay Class: High Sensitivity DNA Assay
 Data Path: C:\...ents and Settings\Bioanalyzer\2012-02-29\2012-02-29_006.xad

Created: 2/29/2012 3:40:33 PM
 Modified: 2/29/2012 4:24:46 PM

Electropherogram Summary Continued ...



Overall Results for sample 2 : sample 2

Number of peaks found: 32 Corr. Area 1: 4,013.2
 Noise: 0.2

Peak table for sample 2 : sample 2


Peak	Size [bp]	Conc. [pg/μl]	Molarity [pmol/l]	Observations
1	35	125.00	5,411.3	Lower Marker
2	38	2,587.09	103,766.6	
3	40	4,431.56	168,830.9	
4	42	3,240.54	118,296.7	
5	42	3,286.83	117,530.3	
6	45	551.13	18,531.2	
7	48	254.03	7,959.3	
8	58	290.49	7,568.0	
9	68	4,026.61	89,454.4	
10	92	250.99	4,128.4	
11	108	313.37	4,377.9	
12	119	203.09	2,594.6	
13	145	99.32	1,040.3	
14	159	218.54	2,076.1	
15	185	1,573.76	12,900.8	
16	191	732.29	5,803.9	
17	193	502.16	3,934.9	
18	198	467.07	3,565.5	
19	208	617.16	4,502.9	
20	222	341.03	2,330.8	
21	245	907.22	5,620.8	
22	268	1,117.26	6,318.1	
23	281	569.14	3,069.7	
24	290	443.32	2,318.2	
25	344	309.26	1,360.3	
26	363	291.97	1,220.0	

Assay Class: High Sensitivity DNA Assay
 Data Path: C:\...ents and Settings\Bioanalyzer\2012-02-29\2012-02-29_006.xad


Created: 2/29/2012 3:40:33 PM
 Modified: 2/29/2012 4:24:46 PM

Electropherogram Summary Continued ...

... Peak table for sample 2 : sample 2

Peak	Size [bp]	Conc. [pg/μl]	Molarity [pmol/l]	Observations
27	379	371.48	1,486.7	
28	387	393.24	1,541.3	
29	401	279.63	1,055.7	
30	412	341.48	1,255.4	
31	433	337.97	1,183.2	
32	440	402.40	1,385.8	
33	468	1,178.14	3,815.9	
34	 10,380	75.00	10.9	Upper Marker

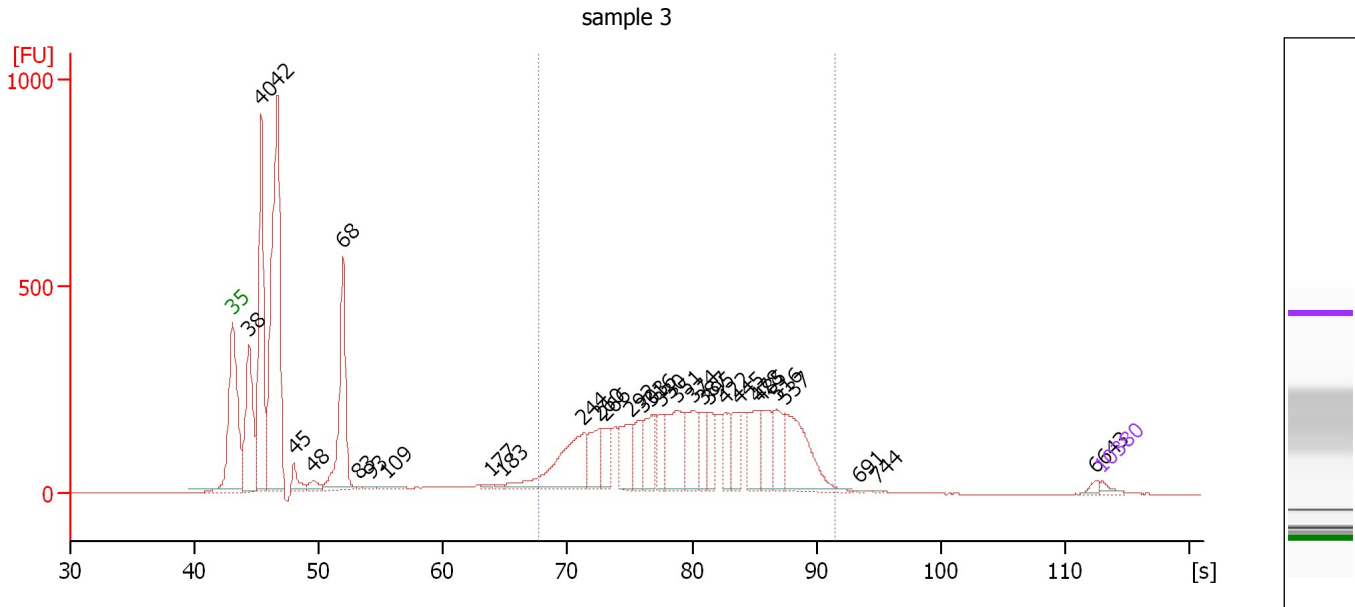
Region table for sample 2 : sample 2

From [s]	Molarity [pmol/l]	Average Size [bp]	Conc. [pg/μl]	To [s]	Corr. Area % of Total	Size distribution in CV [%]	Color	
61.72	76,542.8	319	13,758.24	89.03	4,013.2	47	32.2	

Assay Class: High Sensitivity DNA Assay
 Data Path: C:\...ents and Settings\Bioanalyzer\2012-02-29\2012-02-29_006.xad

Created: 2/29/2012 3:40:33 PM
 Modified: 2/29/2012 4:24:46 PM

Electropherogram Summary Continued ...



Overall Results for sample 3 : sample 3

Number of peaks found: 31 Corr. Area 1: 4,905.6
 Noise: 0.2

Peak table for sample 3 : sample 3

Peak	Size [bp]	Conc. [pg/μl]	Molarity [pmol/l]	Observations
1	35	125.00	5,411.3	Lower Marker
2	38	3,429.61	137,670.7	
3	40	5,671.42	216,006.3	
4	42	9,600.26	342,756.2	
5	45	450.95	15,122.1	
6	48	261.42	8,173.7	
7	68	3,709.23	82,217.2	
8	83	38.94	715.0	
9	93	51.67	839.5	
10	109	89.73	1,247.7	
11	177	58.80	502.5	
12	183	57.92	479.5	
13	244	2,439.58	15,123.0	
14	260	1,012.64	5,905.7	
15	266	703.01	4,009.9	
16	292	1,125.83	5,849.3	
17	303	722.52	3,611.6	
18	316	950.49	4,550.9	
19	330	544.07	2,499.6	
20	351	1,614.53	6,963.8	
21	374	1,043.94	4,226.3	
22	387	546.11	2,138.9	
23	395	684.05	2,623.9	
24	422	666.64	2,392.2	
25	445	592.26	2,015.9	
26	478	925.08	2,931.4	

Assay Class: High Sensitivity DNA Assay
 Data Path: C:\...ents and Settings\Bioanalyzer\2012-02-29\2012-02-29_006.xad


Created: 2/29/2012 3:40:33 PM
 Modified: 2/29/2012 4:24:46 PM

Electropherogram Summary Continued ...

... Peak table for sample 3 : sample 3

Peak	Size [bp]	Conc. [pg/μl]	Molarity [pmol/l]	Observations
27	485	855.69	2,675.6	
28	516	751.10	2,205.2	
29	537	1,871.95	5,279.5	
30	691	12.41	27.2	
31	744	13.64	27.8	
32	6,643	69.42	15.8	
33	▶ 10,380	75.00	10.9	Upper Marker

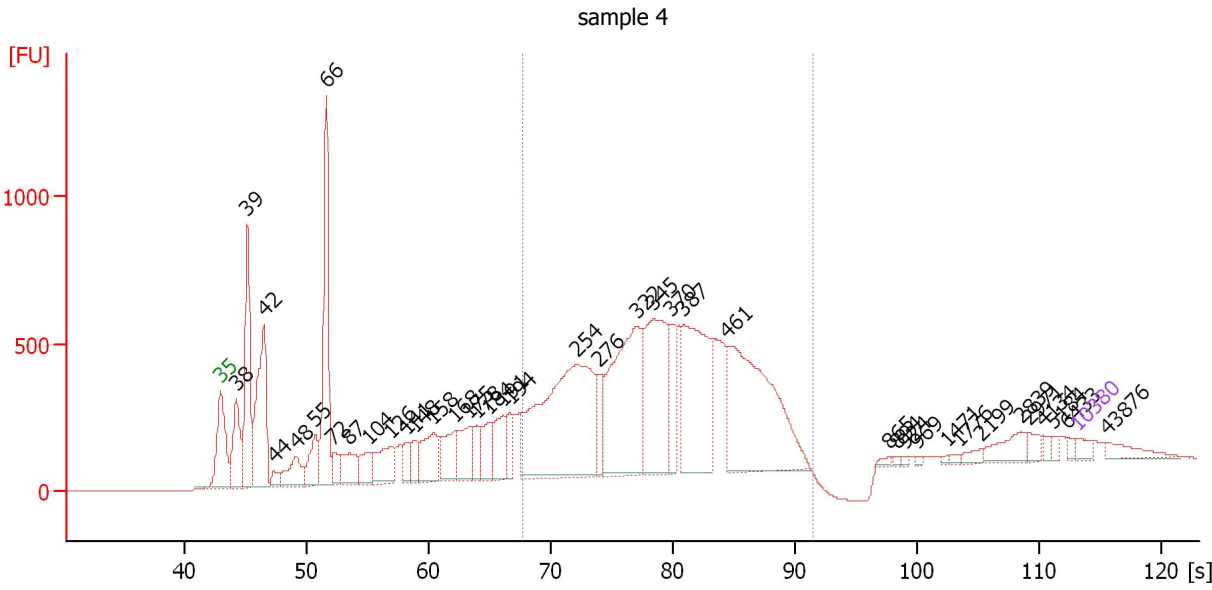
Region table for sample 3 : sample 3

From [s]	Molarity [pmol/l]	Average Size [bp]	Conc. [pg/μl]	To [s]	Corr. Area	% of Total	Size distribution in CV [%]	Color
67.69	85,332.1	386	19,327.91	91.55	4,905.6	50	28.5	

Assay Class: High Sensitivity DNA Assay
 Data Path: C:\...ents and Settings\Bioanalyzer\2012-02-29\2012-02-29_006.xad

Created: 2/29/2012 3:40:33 PM
 Modified: 2/29/2012 4:24:46 PM

Electropherogram Summary Continued ...



Overall Results for sample 4 : sample 4

Number of peaks found: 40 Corr. Area 1: 11,312.0
 Noise: 0.2

Peak table for sample 4 : sample 4

Peak	Size [bp]	Conc. [pg/μl]	Molarity [pmol/l]	Observations
1	35	125.00	5,411.3	Lower Marker
2	38	889.08	35,817.9	
3	39	1,736.38	66,605.9	
4	42	1,885.52	67,556.0	
5	44	150.10	5,179.4	
6	48	487.77	15,497.5	
7	55	500.15	13,750.3	
8	66	2,037.19	47,102.3	
9	72	261.07	5,495.4	
10	87	466.28	8,133.0	
11	104	411.80	5,983.7	
12	126	591.85	7,127.9	
13	141	267.59	2,878.9	
14	148	269.61	2,753.7	
15	158	671.18	6,446.0	
16	168	584.86	5,270.7	
17	175	512.99	4,449.2	
18	178	312.91	2,659.9	
19	184	414.39	3,411.3	
20	191	541.63	4,299.3	
21	194	306.48	2,394.7	
22	254	3,730.20	22,263.9	
23	276	392.20	2,153.4	
24	322	2,293.41	10,787.1	
25	345	1,812.66	7,967.2	
26	370	474.05	1,939.5	

Assay Class: High Sensitivity DNA Assay
 Data Path: C:\...ents and Settings\Bioanalyzer\2012-02-29\2012-02-29_006.xad


Created: 2/29/2012 3:40:33 PM
 Modified: 2/29/2012 4:24:46 PM

Electropherogram Summary Continued ...

... Peak table for sample 4 : sample 4

Peak	Size [bp]	Conc. [pg/µl]	Molarity [pmol/l]	Observations
27	387	1,865.34	7,305.1	
28	461	2,541.68	8,352.0	
29	865	36.86	64.6	
30	894	21.22	36.0	
31	924	23.43	38.4	
32	969	19.50	30.5	
33	1,471	20.11	20.7	
34	1,776	25.71	21.9	
35	2,199	63.18	43.5	
36	2,839	222.52	118.7	
37	2,971	77.94	39.7	
38	4,134	51.09	18.7	
39	5,184	46.32	13.5	
40	6,433	42.92	10.1	
41	10,380	75.00	10.9	Upper Marker
42	43,876	0.00	0.0	

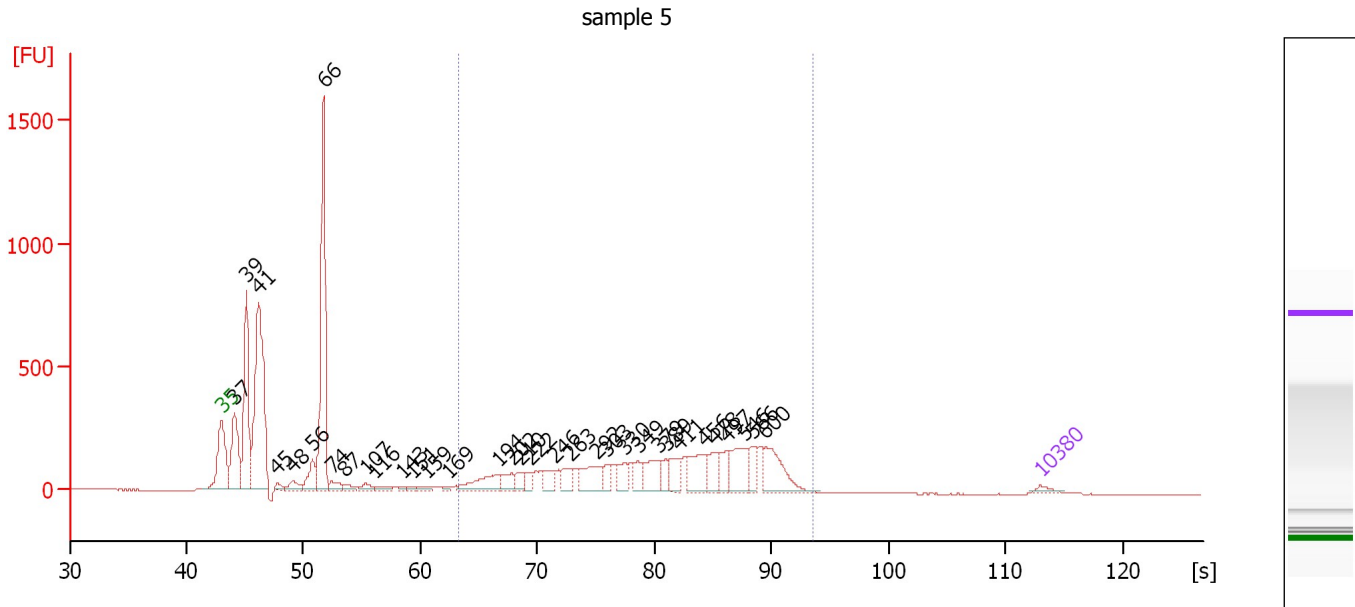
Region table for sample 4 : sample 4

From [s]	Molarity [pmol/l]	Average Size [bp]	Conc. [pg/µl]	To [s]	Corr. Area % of Total	Size distribution in CV [%]	Color	
67.69	63,740.2	369	13,920.97	91.44	11,312.0	55	27.9	

Assay Class: High Sensitivity DNA Assay
 Data Path: C:\...ents and Settings\Bioanalyzer\2012-02-29\2012-02-29_006.xad

Created: 2/29/2012 3:40:33 PM
 Modified: 2/29/2012 4:24:46 PM

Electropherogram Summary Continued ...



Overall Results for sample 5 : sample 5

Number of peaks found: 34 Corr. Area 1: 4,070.0
 Noise: 0.7

Peak table for sample 5 : sample 5

Peak	Size [bp]	Conc. [pg/μl]	Molarity [pmol/l]	Observations
1	35	125.00	5,411.3	Lower Marker
2	37	1,739.00	70,543.3	
3	39	2,854.14	109,965.6	
4	41	4,939.12	180,376.3	
5	45	121.81	4,121.6	
6	48	255.37	8,128.7	
7	56	533.46	14,445.5	
8	66	4,356.41	99,522.2	
9	74	204.79	4,187.4	
10	87	144.26	2,525.5	
11	107	157.14	2,217.8	
12	116	127.74	1,672.4	
13	143	52.50	554.5	
14	151	61.73	618.6	
15	159	101.08	964.1	
16	169	63.32	567.2	
17	194	748.65	5,839.3	
18	202	328.73	2,467.7	
19	210	237.42	1,710.7	
20	222	213.76	1,458.2	
21	246	318.14	1,956.8	
22	263	331.62	1,908.8	
23	292	663.79	3,444.9	
24	303	292.26	1,461.8	
25	330	343.25	1,577.5	
26	349	334.89	1,455.7	

Assay Class: High Sensitivity DNA Assay
 Data Path: C:\...ents and Settings\Bioanalyzer\2012-02-29\2012-02-29_006.xad


Created: 2/29/2012 3:40:33 PM
 Modified: 2/29/2012 4:24:46 PM

Electropherogram Summary Continued ...

... Peak table for sample 5 : sample 5

Peak	Size [bp]	Conc. [pg/μl]	Molarity [pmol/l]	Observations
27	379	561.31	2,242.4	
28	389	219.25	852.9	
29	411	407.39	1,500.6	
30	456	672.00	2,232.4	
31	478	399.83	1,268.7	
32	497	331.49	1,010.6	
33	546	711.73	1,974.3	
34	566	339.93	910.2	
35	600	812.85	2,054.1	
36	▶ 10,380	75.00	10.9	Upper Marker

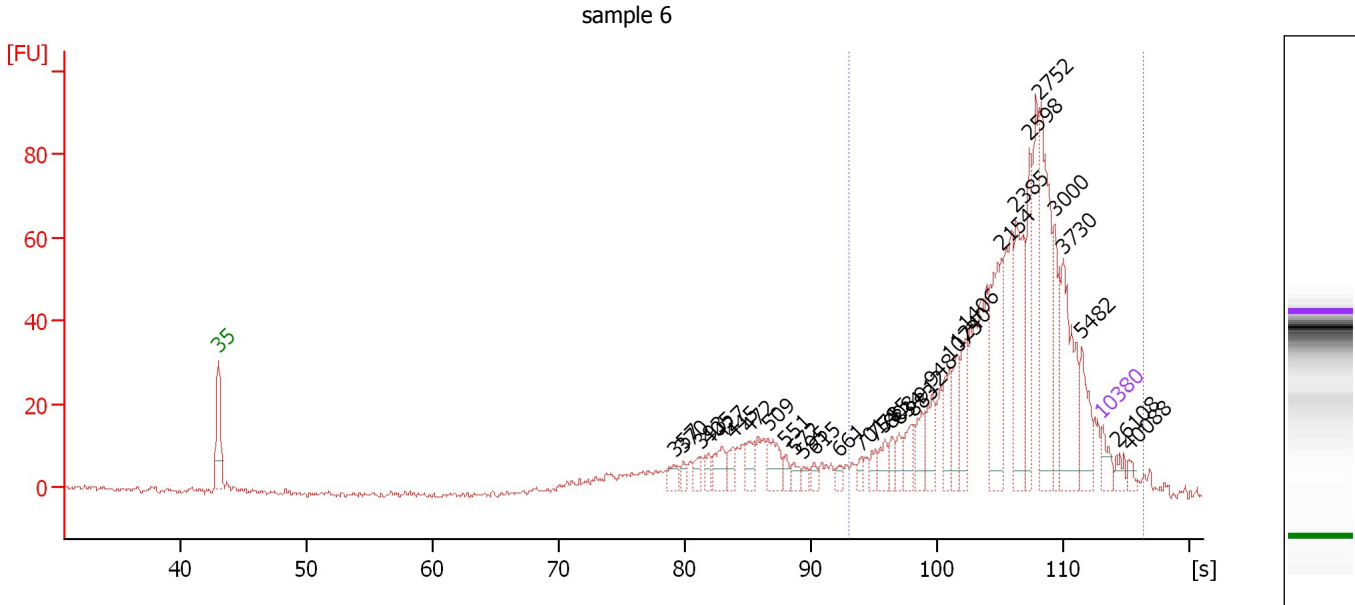
Region table for sample 5 : sample 5

From [s]	Molarity [pmol/l]	Average Size [bp]	Conc. [pg/μl]	To [s]	Corr. Area	% of Total	Size distribution in CV [%]	Color
63.32	44,869.1	403	9,795.85	93.51	4,070.0	46	33.8	

Assay Class: High Sensitivity DNA Assay
 Data Path: C:\...ents and Settings\Bioanalyzer\2012-02-29\2012-02-29_006.xad

Created: 2/29/2012 3:40:33 PM
 Modified: 2/29/2012 4:24:46 PM

Electropherogram Summary Continued ...



Overall Results for sample 6 : sample 6

Number of peaks found: 33 Corr. Area 1: 708.4
 Noise: 0.6

Peak table for sample 6 : sample 6

Peak	Size [bp]	Conc. [pg/μl]	Molarity [pmol/l]	Observations
1	35	125.00	5,411.3	Lower Marker
2	357	81.41	345.8	
3	370	49.11	201.2	
4	393	60.69	234.2	
5	405	65.27	244.0	
6	427	134.02	475.5	
7	445	79.84	271.7	
8	472	110.20	354.1	
9	509	180.29	537.0	
10	551	47.57	130.9	
11	572	56.92	150.9	
12	595	37.97	96.7	
13	615	38.09	93.8	
14	661	42.69	97.8	
15	701	47.57	102.8	
16	754	63.76	128.2	
17	785	89.33	172.3	
18	808	72.86	136.7	
19	834	70.79	128.6	
20	883	125.15	214.9	
21	912	126.26	209.7	
22	948	170.20	272.0	
23	1,073	174.29	246.1	
24	1,240	146.93	179.6	
25	1,406	159.69	172.1	
26	2,154	423.05	297.6	

Assay Class: High Sensitivity DNA Assay
 Data Path: C:\...ents and Settings\Bioanalyzer\2012-02-29\2012-02-29_006.xad


Created: 2/29/2012 3:40:33 PM
 Modified: 2/29/2012 4:24:46 PM

Electropherogram Summary Continued ...

... Peak table for sample 6 : sample 6

Peak	Size [bp]	Conc. [pg/μl]	Molarity [pmol/l]	Observations
27	2,385	429.45	272.8	
28	2,598	299.21	174.5	
29	2,752	641.89	353.4	
30	3,000	251.61	127.1	
31	3,730	465.19	189.0	
32	5,482	199.63	55.2	
33	10,380	75.00	10.9	Upper Marker
34	26,108	0.00	0.0	
35	40,088	0.00	0.0	

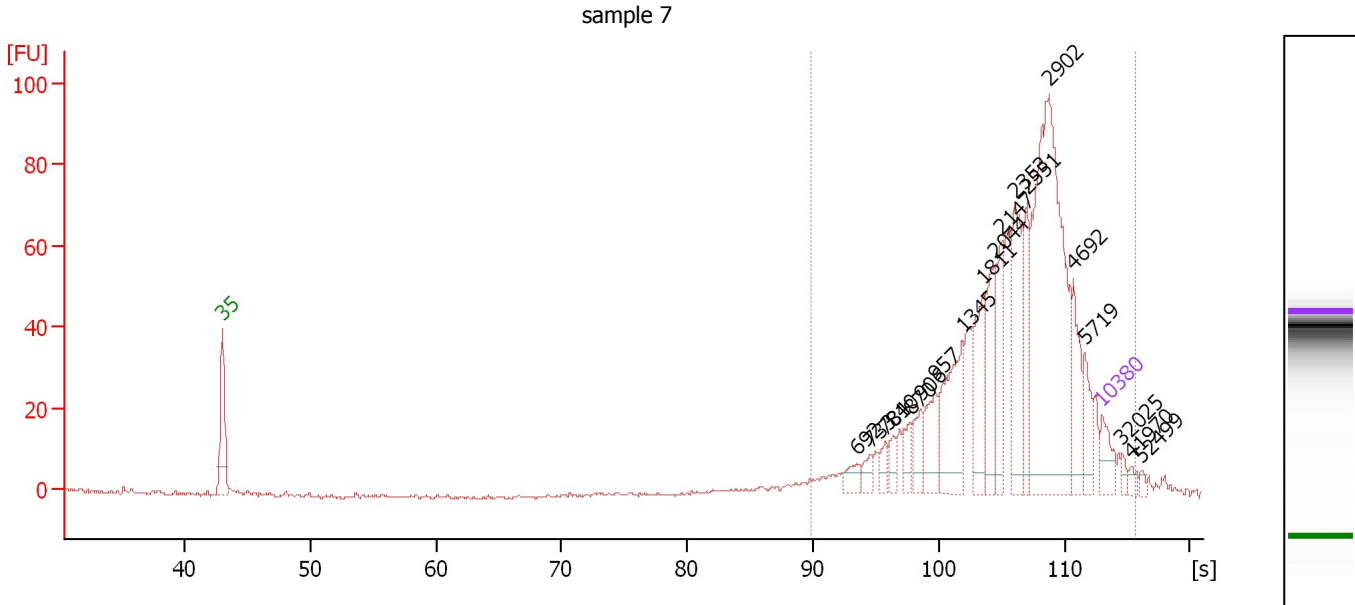
Region table for sample 6 : sample 6

From [s]	Molarity [pmol/l]	Average Size [bp]	Conc. [pg/μl]	To [s]	Corr. Area	% of Total	Size distribution in CV [%]	Color
92.99	4,727.5	3,263	5,644.58	116.24	708.4	78	100.0	

Assay Class: High Sensitivity DNA Assay
 Data Path: C:\...ents and Settings\Bioanalyzer\2012-02-29\2012-02-29_006.xad

Created: 2/29/2012 3:40:33 PM
 Modified: 2/29/2012 4:24:46 PM

Electropherogram Summary Continued ...



Overall Results for sample 7 : sample 7

Number of peaks found: 19 Corr. Area 1: 768.9
 Noise: 0.5

Peak table for sample 7 : sample 7

Peak	Size [bp]	Conc. [pg/μl]	Molarity [pmol/l]	Observations
1	35	125.00	5,411.3	Lower Marker
2	692	59.03	129.3	
3	733	41.44	85.6	
4	784	37.36	72.2	
5	810	47.67	89.1	
6	870	63.43	110.4	
7	906	85.87	143.6	
8	957	145.75	230.8	
9	1,345	299.73	337.6	
10	1,811	193.18	161.6	
11	2,044	194.61	144.2	
12	2,147	147.11	103.8	
13	2,353	266.11	171.3	
14	2,551	176.97	105.1	
15	2,902	1,063.66	555.3	
16	4,692	168.64	54.5	
17	5,719	101.39	26.9	
18	10,380	75.00	10.9	Upper Marker
19	32,025	0.00	0.0	
20	41,970	0.00	0.0	
21	52,499	0.00	0.0	

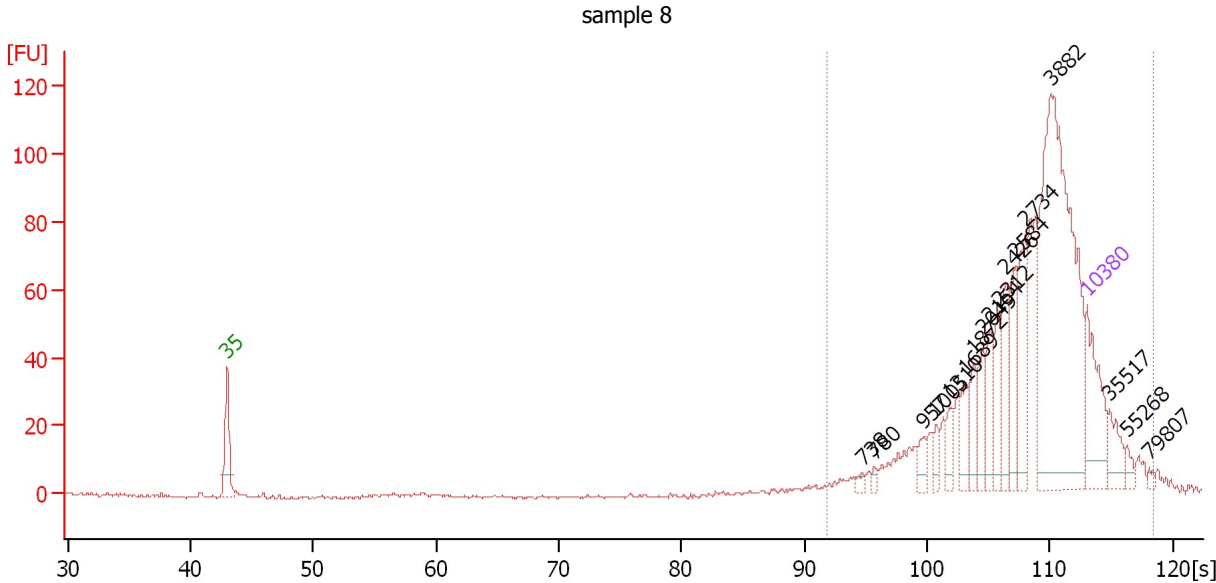
Region table for sample 7 : sample 7

From [s]	Molarity [pmol/l]	Average Size [bp]	Conc. [pg/μl]	To [s]	Corr. Area	% of Total	Size distribution in CV [%]	Color
89.81	3,105.3	3,193	3,629.34	115.70	768.9	98	100.0	Blue

Assay Class: High Sensitivity DNA Assay
 Data Path: C:\...ents and Settings\Bioanalyzer\2012-02-29\2012-02-29_006.xad

Created: 2/29/2012 3:40:33 PM
 Modified: 2/29/2012 4:24:46 PM

Electropherogram Summary Continued ...



Overall Results for sample 8 : sample 8

Number of peaks found: 17 Corr. Area 1: 783.2
 Noise: 0.3

Peak table for sample 8 : sample 8

Peak	Size [bp]	Conc. [pg/μl]	Molarity [pmol/l]	Observations
1	35	125.00	5,411.3	Lower Marker
2	738	6.74	13.8	
3	780	6.46	12.6	
4	957	16.78	26.6	
5	1,005	15.15	22.8	
6	1,310	18.52	21.4	
7	1,689	30.40	27.3	
8	1,872	28.64	23.2	
9	2,049	33.61	24.9	
10	2,154	33.60	23.6	
11	2,312	36.68	24.0	
12	2,426	55.16	34.4	
13	2,584	43.28	25.4	
14	2,734	65.82	36.5	
15	3,882	399.46	155.9	
16	10,380	75.00	10.9	Upper Marker
17	35,517	0.00	0.0	
18	55,268	0.00	0.0	
19	79,807	0.00	0.0	

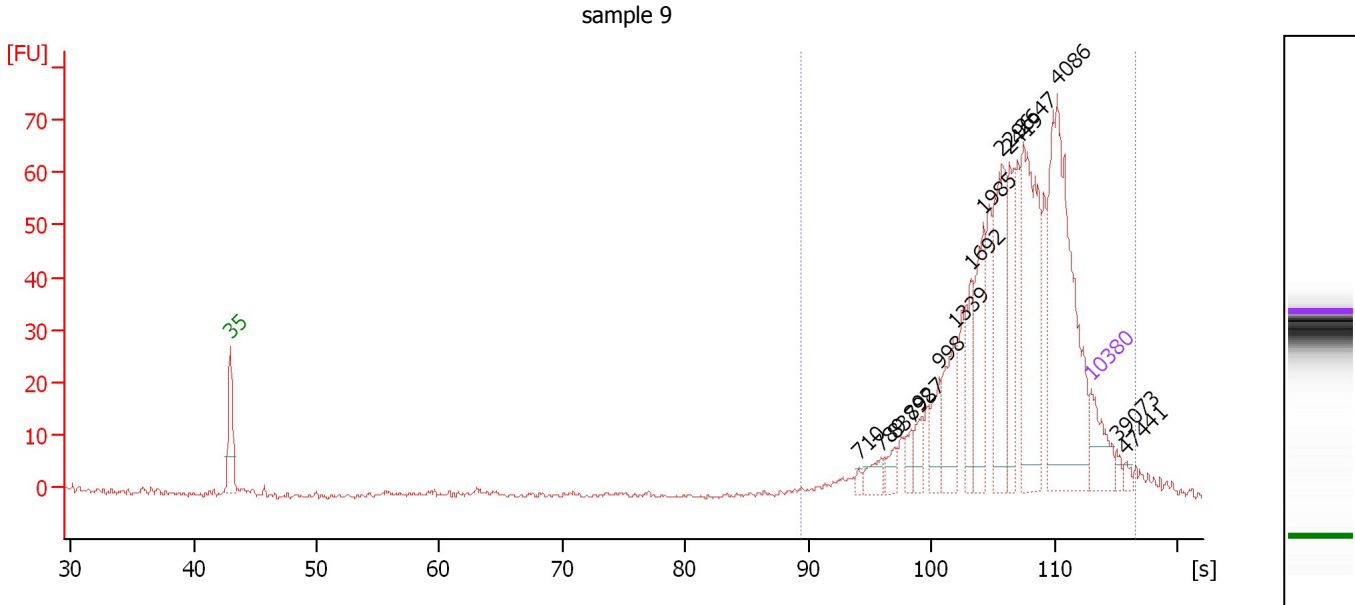
Region table for sample 8 : sample 8

From [s]	Molarity [pmol/l]	Average Size [bp]	Conc. [pg/μl]	To [s]	Corr. Area	% of Total	Size distribution in CV [%]	Color
91.80	646.2	6,783	1,006.14	118.48	783.2	99	100.0	■

Assay Class: High Sensitivity DNA Assay
 Data Path: C:\...ents and Settings\Bioanalyzer\2012-02-29\2012-02-29_006.xad

Created: 2/29/2012 3:40:33 PM
 Modified: 2/29/2012 4:24:46 PM

Electropherogram Summary Continued ...



Overall Results for sample 9 : sample 9

Number of peaks found: 15 Corr. Area 1: 656.8
 Noise: 0.4

Peak table for sample 9 : sample 9

Peak	Size [bp]	Conc. [pg/μl]	Molarity [pmol/l]	Observations
1	35	125.00	5,411.3	Lower Marker
2	710	11.58	24.7	
3	789	40.98	78.7	
4	837	29.05	52.6	
5	898	29.39	49.6	
6	927	38.84	63.5	
7	998	64.49	97.9	
8	1,339	119.99	135.8	
9	1,692	92.31	82.6	
10	1,985	145.85	111.3	
11	2,296	216.94	143.1	
12	2,419	124.65	78.1	
13	2,647	324.89	186.0	
14	4,086	507.55	188.2	
15	10,380	75.00	10.9	Upper Marker
16	39,073	0.00	0.0	
17	47,441	0.00	0.0	

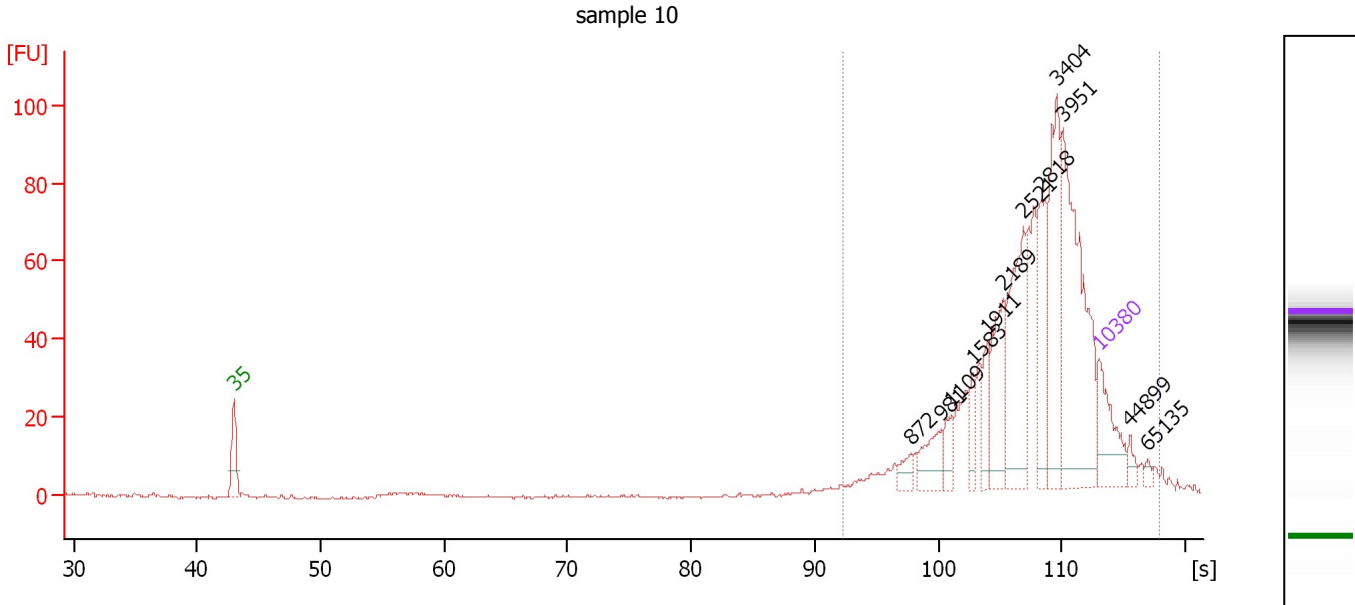
Region table for sample 9 : sample 9

From [s]	Molarity [pmol/l]	Average Size [bp]	Conc. [pg/μl]	To [s]	Corr. Area	% of Total	Size distribution in CV [%]	Color
89.43	1,709.5	4,078	2,218.77	116.63	656.8	97	100.0	Blue

Assay Class: High Sensitivity DNA Assay
 Data Path: C:\...ents and Settings\Bioanalyzer\2012-02-29\2012-02-29_006.xad

Created: 2/29/2012 3:40:33 PM
 Modified: 2/29/2012 4:24:46 PM

Electropherogram Summary Continued ...



Overall Results for sample 10 : sample 10

Number of peaks found: 12 Corr. Area 1: 676.8
 Noise: 0.2

Peak table for sample 10 : sample 10

Peak	Size [bp]	Conc. [pg/μl]	Molarity [pmol/l]	Observations
1	35	125.00	5,411.3	Lower Marker
2	872	21.74	37.8	
3	981	52.34	80.8	
4	1,109	30.47	41.6	
5	1,583	29.07	27.8	
6	1,911	37.72	29.9	
7	2,189	96.30	66.7	
8	2,521	162.70	97.8	
9	2,818	105.17	56.6	
10	3,404	154.63	68.8	
11	3,951	296.01	113.5	
12	10,380	75.00	10.9	Upper Marker
13	44,899	0.00	0.0	
14	65,135	0.00	0.0	

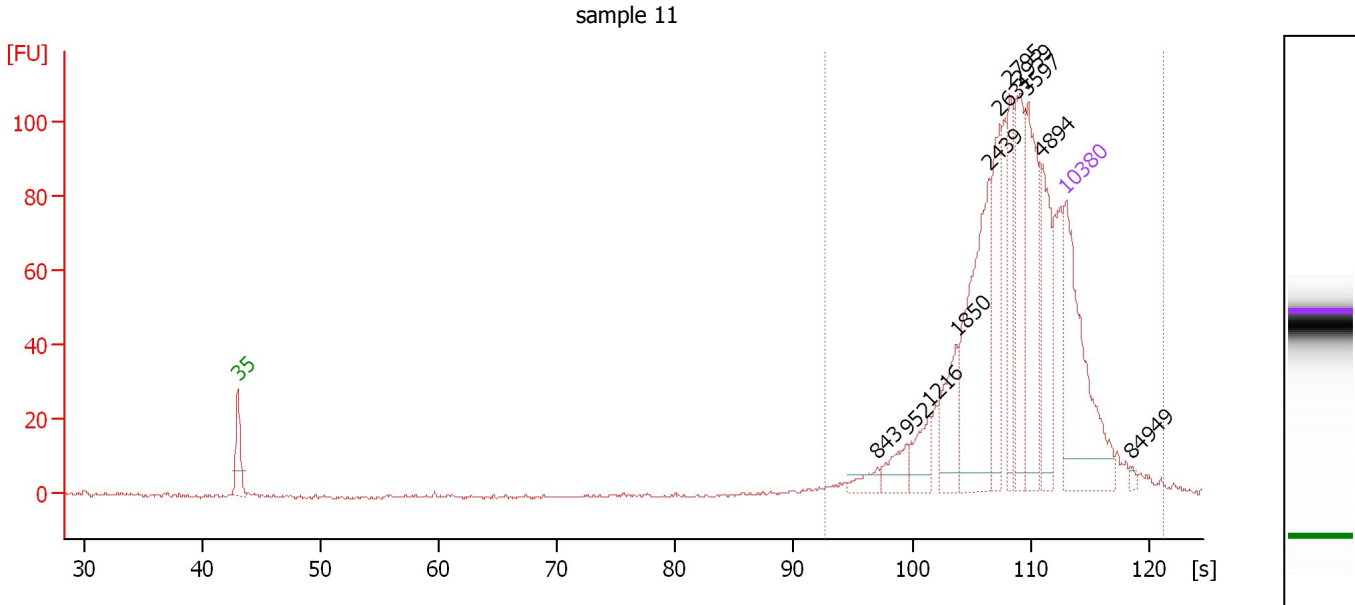
Region table for sample 10 : sample 10

From [s]	Molarity [pmol/l]	Average Size [bp]	Conc. [pg/μl]	To [s]	Corr. Area	% of Total	Size distribution in CV [%]	Color
92.26	810.1	5,433	1,218.73	117.87	676.8	99	100.0	Blue

Assay Class: High Sensitivity DNA Assay
 Data Path: C:\...ents and Settings\Bioanalyzer\2012-02-29\2012-02-29_006.xad

Created: 2/29/2012 3:40:33 PM
 Modified: 2/29/2012 4:24:46 PM

Electropherogram Summary Continued ...



Overall Results for sample 11 : sample 11

Number of peaks found: 11 Corr. Area 1: 817.1
 Noise: 0.4

Peak table for sample 11 : sample 11

Peak	Size [bp]	Conc. [pg/μl]	Molarity [pmol/l]	Observations
1	35	125.00	5,411.3	Lower Marker
2	843	9.00	16.2	
3	952	15.05	23.9	
4	1,216	18.73	23.3	
5	1,850	30.96	25.4	
6	2,439	89.48	55.6	
7	2,631	43.98	25.3	
8	2,795	31.52	17.1	
9	2,959	46.39	23.8	
10	3,597	62.31	26.2	
11	4,894	43.00	13.3	
12	10,380	75.00	10.9	Upper Marker
13	84,949	0.00	0.0	

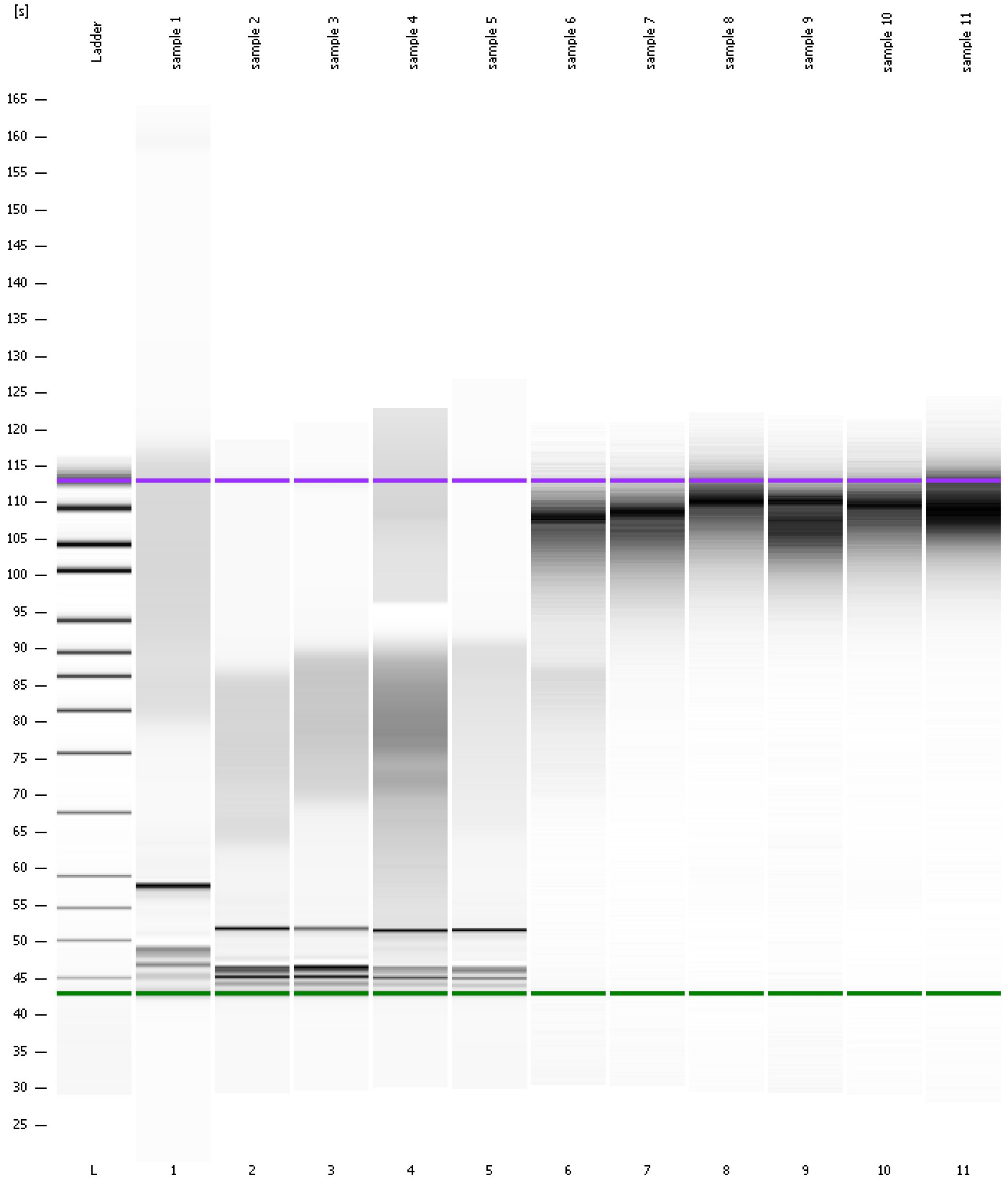
Region table for sample 11 : sample 11

From [s]	Molarity [pmol/l]	Average Size [bp]	Conc. [pg/μl]	To [s]	Corr. Area	% of Total	Size distribution in CV [%]	Color
92.56	287.8	8,419	466.25	121.24	817.1	99	100.0	Blue

Assay Class: High Sensitivity DNA Assay
Data Path: C:\...ents and Settings\Bioanalyzer\2012-02-29\2012-02-29_006.xad

Created: 2/29/2012 3:40:33 PM
Modified: 2/29/2012 4:24:46 PM

Gel Image

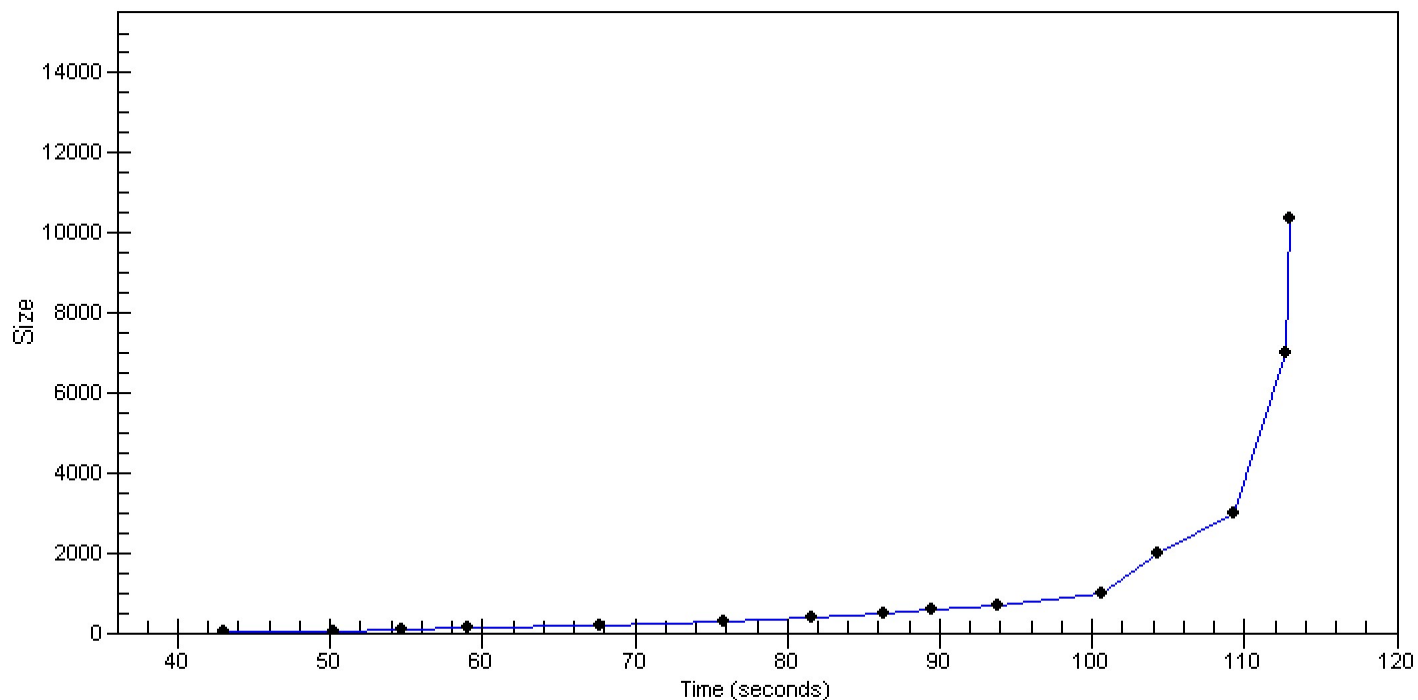


Assay Class: High Sensitivity DNA Assay
Data Path: C:\...ents and Settings\Bioanalyzer\2012-02-29\2012-02-29_006.xad

Created: 2/29/2012 3:40:33 PM
Modified: 2/29/2012 4:24:46 PM

Curves

Standard Curve



Assay Class: High Sensitivity DNA Assay
 Data Path: C:\...ents and Settings\Bioanalyzer\2012-02-29\2012-02-29_006.xad

Created: 2/29/2012 3:40:33 PM
 Modified: 2/29/2012 4:24:46 PM

Run Logbook

Description	Number	Source	Category	Sub Category	Time	Time Zone	User	Host
Run ended on port 1 (Number of wells acquired: 12)		Instrument	Run		2/29/2012 4:21:50 PM	(GMT --08:00) Pacific Standard Time	UC Davis	D8XSMGH1
Run started on port 1 (File: C:\Documents and Settings\Bioanalyzer\2012-02-29\2012-02-29_006.xad)		Instrument	Run		2/29/2012 3:40:39 PM	(GMT --08:00) Pacific Standard Time	UC Davis	D8XSMGH1
Product Number : G2938B		Instrument	Run		2/29/2012 3:40:39 PM	(GMT --08:00) Pacific Standard Time	UC Davis	D8XSMGH1
Name :		Instrument	Run		2/29/2012 3:40:39 PM	(GMT --08:00) Pacific Standard Time	UC Davis	D8XSMGH1
Vendor : Agilent Technologies		Instrument	Run		2/29/2012 3:40:39 PM	(GMT --08:00) Pacific Standard Time	UC Davis	D8XSMGH1
Serial# : DE13701086		Instrument	Run		2/29/2012 3:40:39 PM	(GMT --08:00) Pacific Standard Time	UC Davis	D8XSMGH1
Firmware : C.01.069		Instrument	Run		2/29/2012 3:40:39 PM	(GMT --08:00) Pacific Standard Time	UC Davis	D8XSMGH1
Cartridge : Electrode		Instrument	Run		2/29/2012 3:40:39 PM	(GMT --08:00) Pacific Standard Time	UC Davis	D8XSMGH1