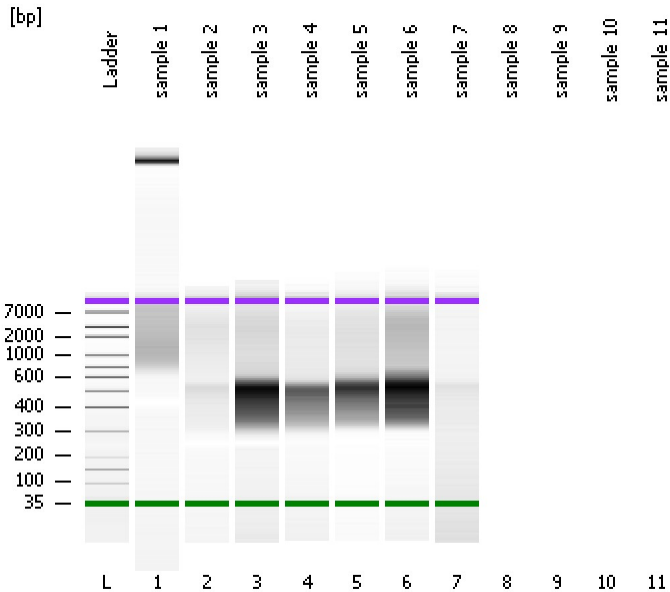


Assay Class: High Sensitivity DNA Assay
Data Path: C:\...ents and Settings\Bioanalyzer\2012-02-24\2012-02-24_004.xad

Created: 2/24/2012 1:13:41 PM
Modified: 2/24/2012 1:45:25 PM

Electrophoresis File Run Summary



Instrument Information:

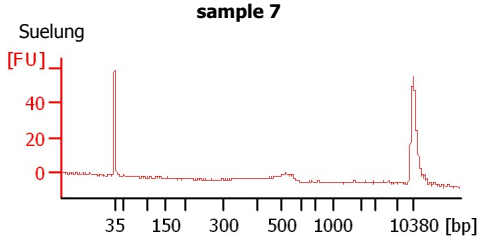
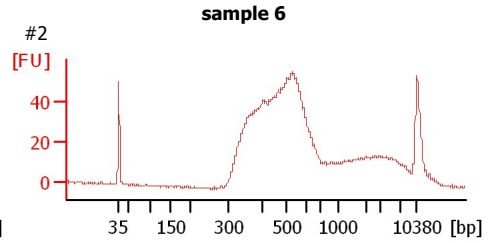
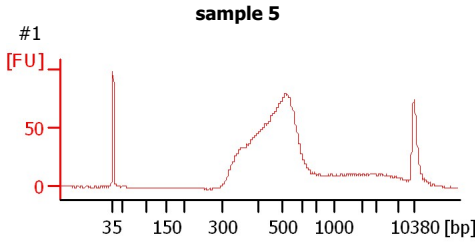
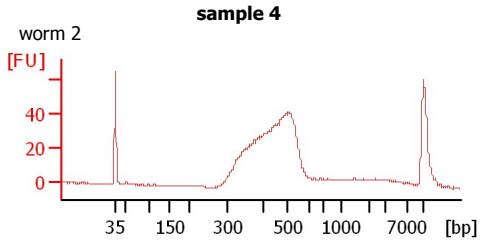
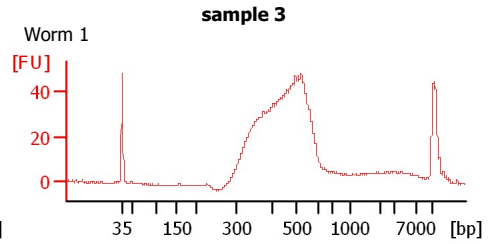
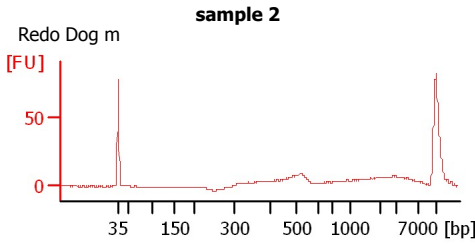
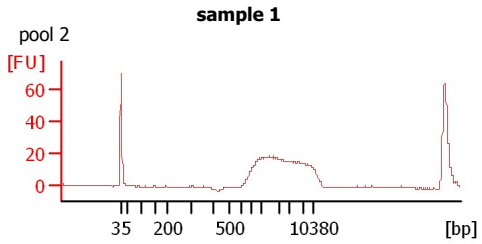
Instrument Name: DE13701086 Firmware: C.01.069
Serial#: DE13701086 Type: G2938B

Assay Information:

Assay Origin Path: C:\Program Files\Agilent\2100 bioanalyzer\2100 expert\assays\dsDNA\High Sensitivity DNA.xsy
Assay Class: High Sensitivity DNA Assay
Version: 1.03
Assay Comments: Copyright © 2003-2010 Agilent Technologies

Chip Information:

Chip Lot #:
Reagent Kit Lot #:
Chip Comments:



Assay Class: High Sensitivity DNA Assay
Data Path: C:\...ents and Settings\Bioanalyzer\2012-02-24\2012-02-24_004.xad

Created: 2/24/2012 1:13:41 PM
Modified: 2/24/2012 1:45:25 PM

Electrophoresis File Run Summary (Chip Summary)

Sample Name	Sample Comment	Rest. Digest	Status	Observation	Result Label	Result Color
sample 1	pool 2	<input type="checkbox"/>	✓			
sample 2	Redo Dog m	<input type="checkbox"/>	✓			
sample 3	Worm 1	<input type="checkbox"/>	✓			
sample 4	worm 2	<input type="checkbox"/>	✓			
sample 5	#1	<input type="checkbox"/>	✓			
sample 6	#2	<input type="checkbox"/>	✓			
sample 7	Suelung	<input type="checkbox"/>	✓			
sample 8		<input checked="" type="checkbox"/>				
sample 9		<input checked="" type="checkbox"/>				
sample 10		<input checked="" type="checkbox"/>				
sample 11		<input checked="" type="checkbox"/>				
Ladder		<input type="checkbox"/>	✓			

Chip Lot #

Reagent Kit Lot #

Chip Comments :

Assay Class: High Sensitivity DNA Assay
Data Path: C:\...ents and Settings\Bioanalyzer\2012-02-24\2012-02-24_004.xad

Created: 2/24/2012 1:13:41 PM
Modified: 2/24/2012 1:45:25 PM

Electrophoresis Assay Details

General Analysis Settings

Number of Available Sample and Ladder Wells (Max.) : 12
Minimum Visible Range [s] : 32
Maximum Visible Range [s] : 138
Start Analysis Time Range [s] : 33
End Analysis Time Range [s] : 137.5
Ladder Concentration [pg/μl] : 1950
Uses Standard Area for Ladder Fragments
Lower Marker Concentration [pg/μl] : 125
Upper Marker Concentration [pg/μl] : 75
Used Upper Marker for Quantitation
Standard Curve Fit is Point to Point
Show Data Aligned to Lower and Upper Marker

Integrator Settings

Integration Start Time [s] : 33.05
Integration End Time [s] : 137
Slope Threshold : 0.8
Height Threshold [FU] : 5
Area Threshold : 0.1
Width Threshold [s] : 0.6
Baseline Plateau [s] : 0.5

Filter Settings

Filter Width [s] : 0.5
Polynomial Order : 4

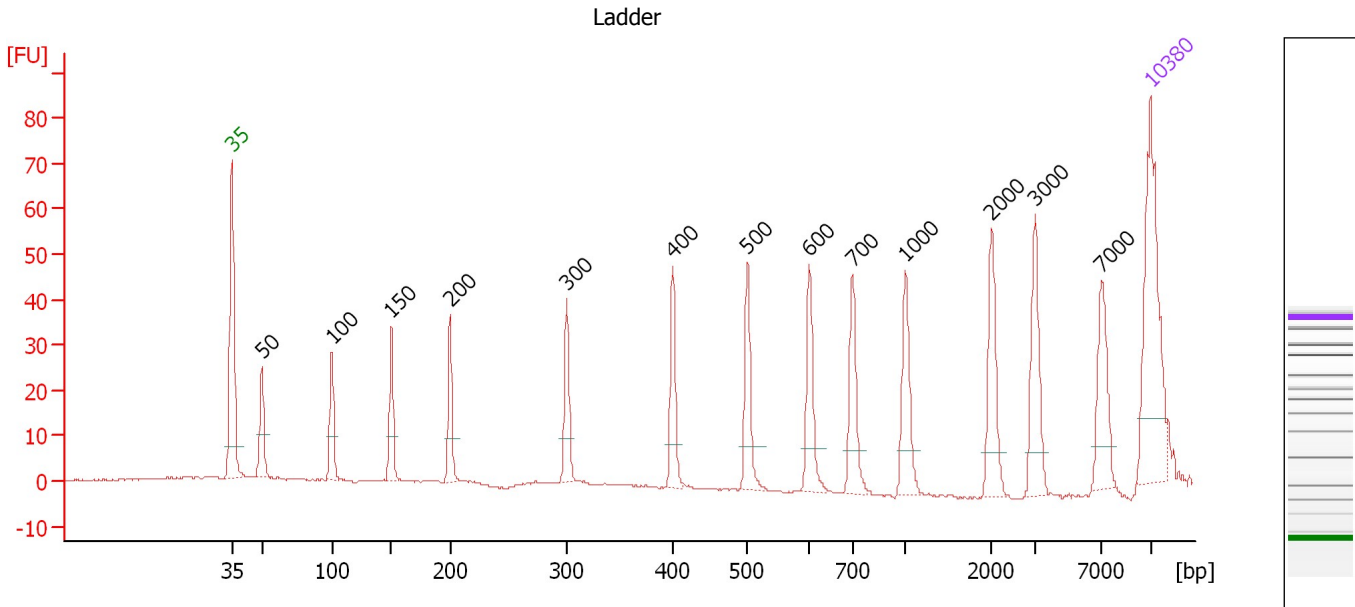
Ladder

Ladder Peak	Size	Area
1	35	160
2	50	210
3	100	208
4	150	221
5	200	242
6	300	270
7	400	305
8	500	306
9	600	336
10	700	321
11	1000	366
12	2000	413
13	3000	411
14	7000	400
15	10380	214

Assay Class: High Sensitivity DNA Assay
 Data Path: C:\...ents and Settings\Bioanalyzer\2012-02-24\2012-02-24_004.xad

Created: 2/24/2012 1:13:41 PM
 Modified: 2/24/2012 1:45:25 PM

Electropherogram Summary



Overall Results for Ladder

Noise: 0.2

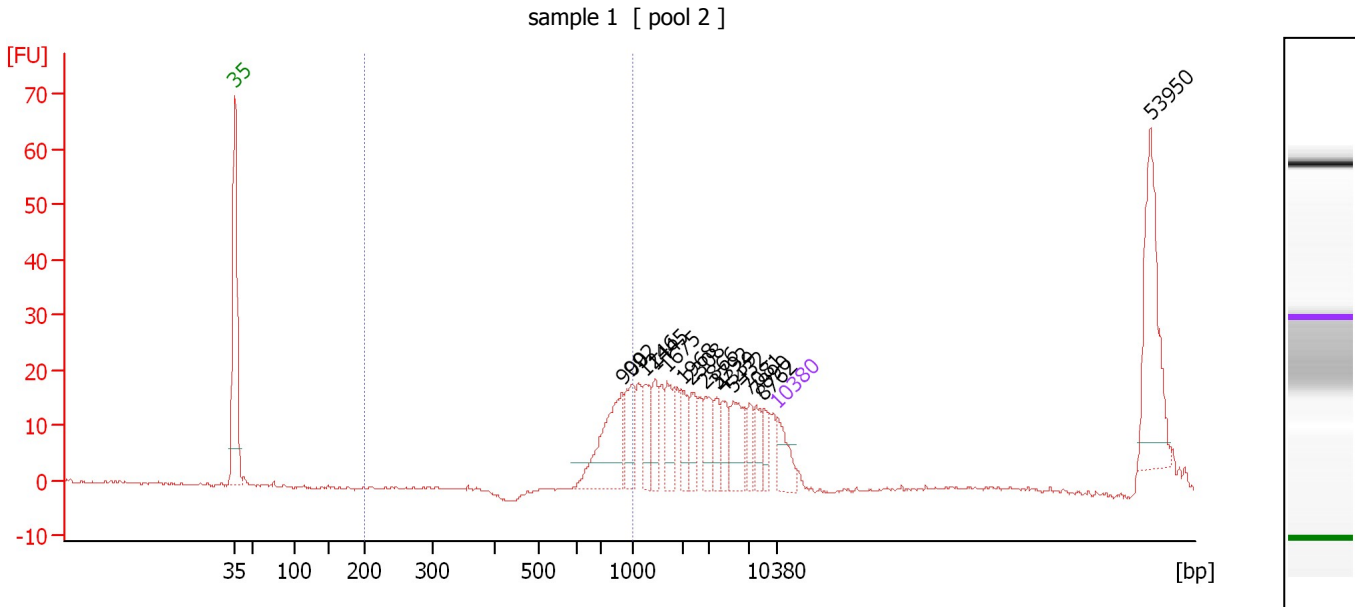
Peak table for Ladder

Peak	Size [bp]	Conc. [pg/μl]	Molarity [pmol/l]	Observations
1	35	125.00	5,411.3	Lower Marker
2	50	150.00	4,545.5	Ladder Peak
3	100	150.00	2,272.7	Ladder Peak
4	150	150.00	1,515.2	Ladder Peak
5	200	150.00	1,136.4	Ladder Peak
6	300	150.00	757.6	Ladder Peak
7	400	150.00	568.2	Ladder Peak
8	500	150.00	454.5	Ladder Peak
9	600	150.00	378.8	Ladder Peak
10	700	150.00	324.7	Ladder Peak
11	1,000	150.00	227.3	Ladder Peak
12	2,000	150.00	113.6	Ladder Peak
13	3,000	150.00	75.8	Ladder Peak
14	7,000	150.00	32.5	Ladder Peak
15	10,380	75.00	10.9	Upper Marker

Assay Class: High Sensitivity DNA Assay
 Data Path: C:\...ents and Settings\Bioanalyzer\2012-02-24\2012-02-24_004.xad

Created: 2/24/2012 1:13:41 PM
 Modified: 2/24/2012 1:45:25 PM

Electropherogram Summary Continued ...



Overall Results for sample 1 : sample 1

Number of peaks found: 15 Corr. Area 1: 56.2
 Noise: 0.2

Peak table for sample 1 : sample 1

Peak	Size [bp]	Conc. [pg/µl]	Molarity [pmol/l]	Observations
1	35	125.00	5,411.3	Lower Marker
2	900	263.19	443.1	
3	992	117.46	179.3	
4	1,246	76.98	93.6	
5	1,445	75.56	79.2	
6	1,675	91.22	82.5	
7	1,968	58.50	45.1	
8	2,308	74.41	48.9	
9	2,866	79.06	41.8	
10	3,792	53.04	21.2	
11	4,339	62.84	21.9	
12	5,432	115.77	32.3	
13	7,081	49.42	10.6	
14	7,890	53.63	10.3	
15	8,762	47.61	8.2	
16	10,380	75.00	10.9	Upper Marker
17	53,950	0.00	0.0	

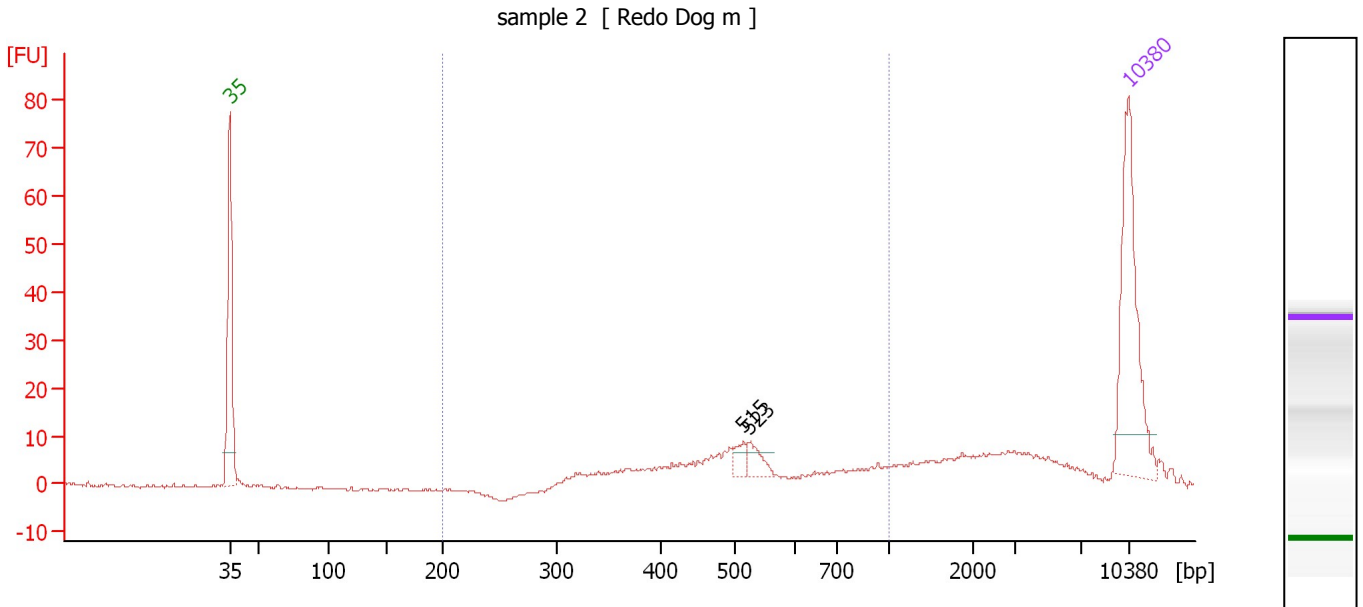
Region table for sample 1 : sample 1

From [bp]	Molarity [pmol/l]	Average Size [bp]	Conc. [pg/µl]	To [bp]	Corr. Area	% of Total	Size distribution in CV [%]	Color
200	573.9	832	311.39	1,000	56.2	16	12.4	Blue

Assay Class: High Sensitivity DNA Assay
 Data Path: C:\...ents and Settings\Bioanalyzer\2012-02-24\2012-02-24_004.xad

Created: 2/24/2012 1:13:41 PM
 Modified: 2/24/2012 1:45:25 PM

Electropherogram Summary Continued ...



Overall Results for sample 2 : sample 2

Number of peaks found: 2 Corr. Area 1: 126.0
 Noise: 0.2

Peak table for sample 2 : sample 2

Peak	Size [bp]	Conc. [pg/μl]	Molarity [pmol/l]	Observations
1	35	125.00	5,411.3	Lower Marker
2	515	8.83	26.0	
3	523	12.32	35.7	
4	10,380	75.00	10.9	Upper Marker

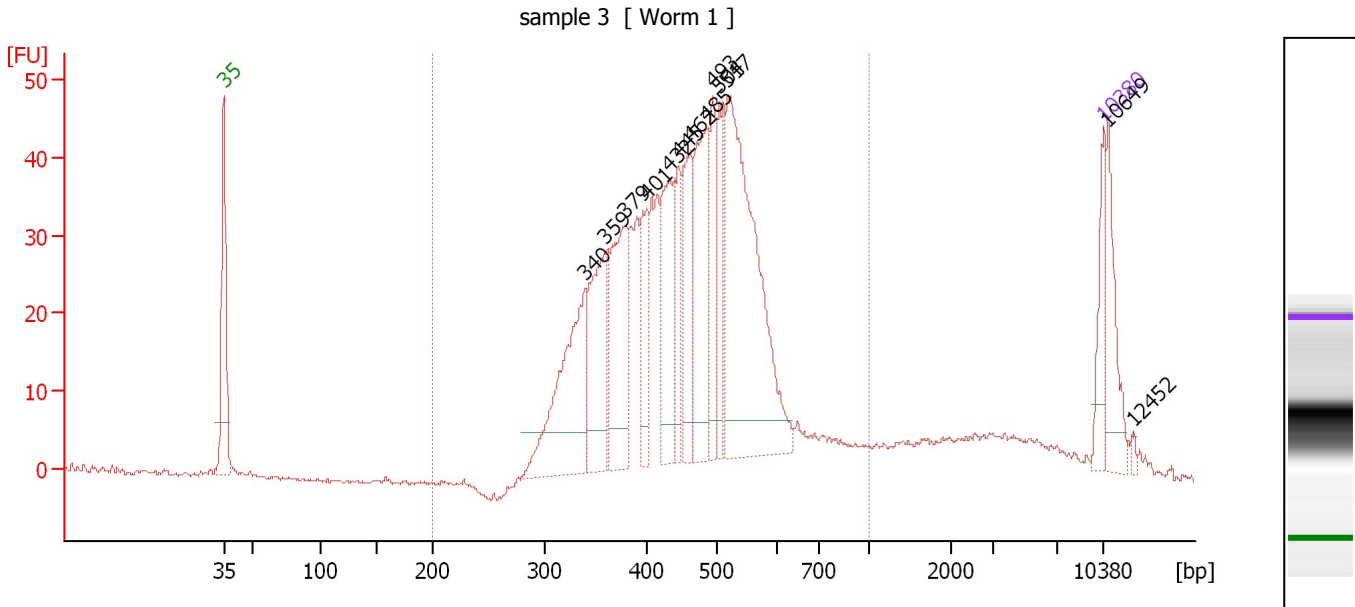
Region table for sample 2 : sample 2

From [bp]	Molarity [pmol/l]	Average Size [bp]	Conc. [pg/μl]	To [bp]	Corr. Area	% of Total	Size distribution in CV [%]	Color
200	430.0	530	134.87	1,000	126.0	56	30.8	Blue

Assay Class: High Sensitivity DNA Assay
 Data Path: C:\...ents and Settings\Bioanalyzer\2012-02-24\2012-02-24_004.xad

Created: 2/24/2012 1:13:41 PM
 Modified: 2/24/2012 1:45:25 PM

Electropherogram Summary Continued ...



Overall Results for sample 3 : sample 3

Number of peaks found: 13 Corr. Area 1: 818.7
 Noise: 0.2

Peak table for sample 3 : sample 3

Peak	Size [bp]	Conc. [pg/μl]	Molarity [pmol/l]	Observations
1	35	125.00	5,411.3	Lower Marker
2	340	403.08	1,795.2	
3	359	279.06	1,177.5	
4	379	289.04	1,155.4	
5	401	125.53	474.6	
6	432	223.90	785.1	
7	445	120.49	410.4	
8	462	209.21	686.2	
9	485	278.54	870.1	
10	493	148.60	456.4	
11	504	137.07	412.4	
12	517	744.14	2,180.5	
13	10,380	75.00	10.9	Upper Marker
14	10,649	0.00	0.0	
15	12,452	0.00	0.0	

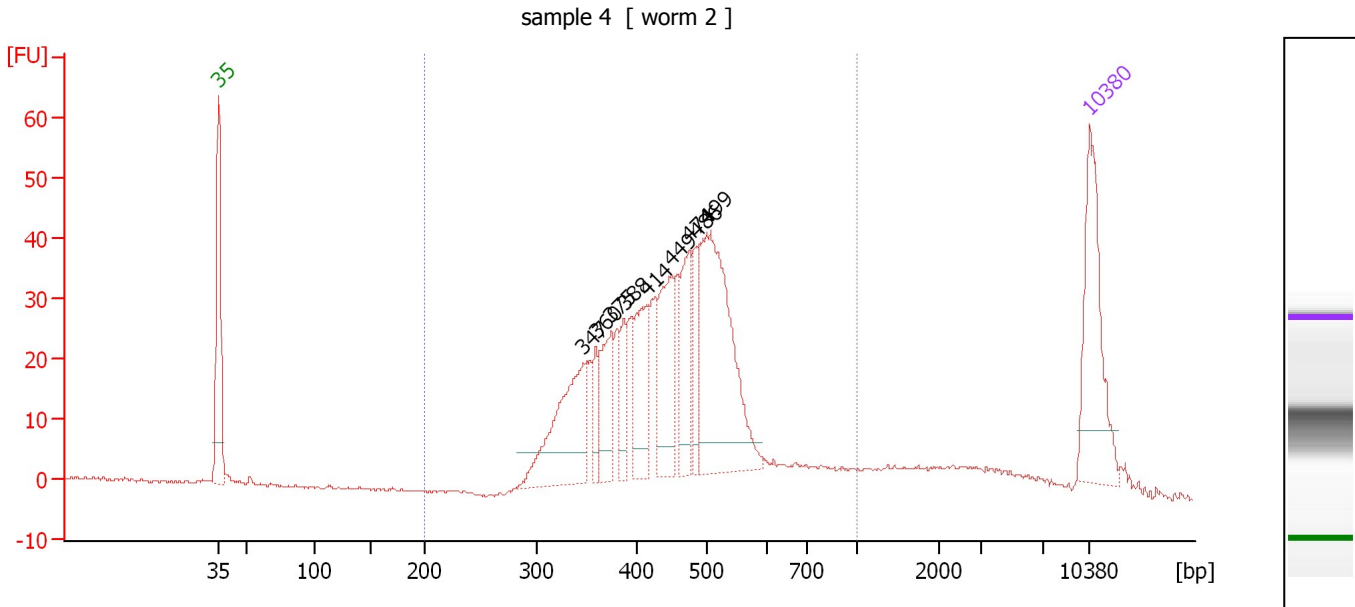
Region table for sample 3 : sample 3

From [bp]	Molarity [pmol/l]	Average Size [bp]	Conc. [pg/μl]	To [bp]	Corr. Area	% of Total	Size distribution in CV [%]	Color
200	12,669.1	463	3,645.01	1,000	818.7	87	22.6	Blue

Assay Class: High Sensitivity DNA Assay
 Data Path: C:\...ents and Settings\Bioanalyzer\2012-02-24\2012-02-24_004.xad

Created: 2/24/2012 1:13:41 PM
 Modified: 2/24/2012 1:45:25 PM

Electropherogram Summary Continued ...



Overall Results for sample 4 : sample 4

Number of peaks found: 9 Corr. Area 1: 647.3
 Noise: 0.2

Peak table for sample 4 : sample 4

Peak	Size [bp]	Conc. [pg/μl]	Molarity [pmol/l]	Observations
1	35	125.00	5,411.3	Lower Marker
2	347	113.72	496.0	
3	360	23.18	97.7	
4	375	50.54	204.2	
5	388	26.42	103.2	
6	414	60.98	223.1	
7	449	77.03	260.1	
8	474	56.15	179.6	
9	486	34.65	108.1	
10	499	192.52	584.3	
11	10,380	75.00	10.9	Upper Marker

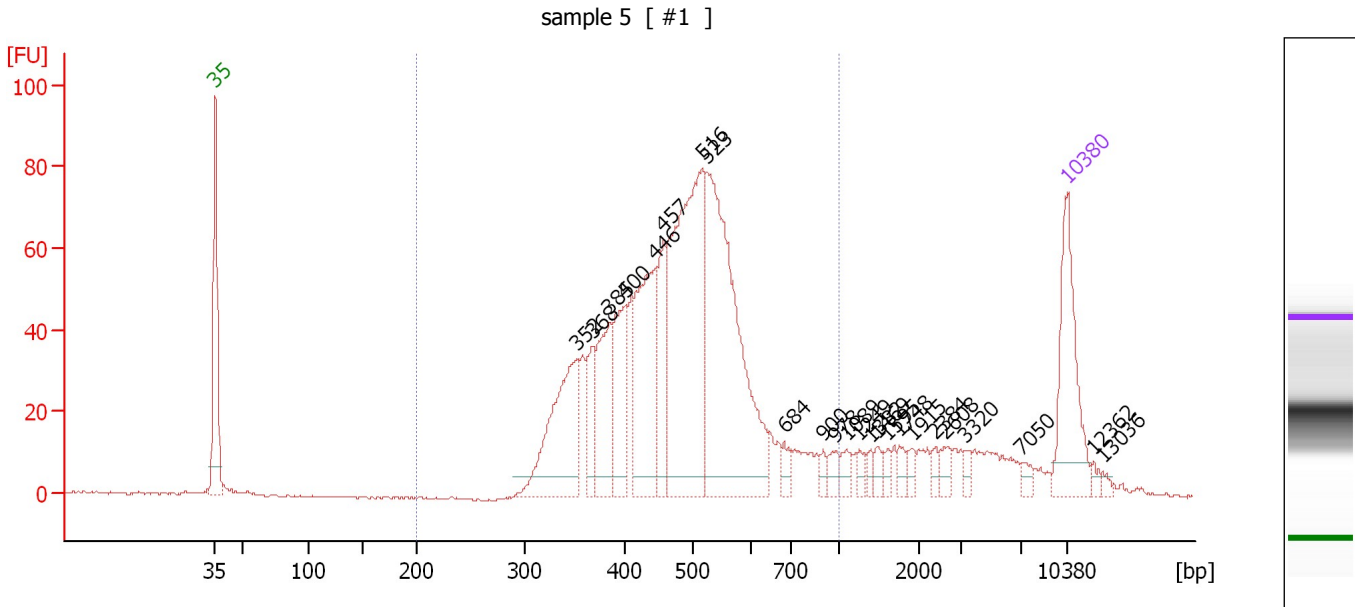
Region table for sample 4 : sample 4

From [bp]	Molarity [pmol/l]	Average Size [bp]	Conc. [pg/μl]	To [bp]	Corr. Area	% of Total	Size distribution in CV [%]	Color
200	2,964.1	458	845.80	1,000	647.3	90	22.8	Blue

Assay Class: High Sensitivity DNA Assay
 Data Path: C:\...ents and Settings\Bioanalyzer\2012-02-24\2012-02-24_004.xad

Created: 2/24/2012 1:13:41 PM
 Modified: 2/24/2012 1:45:25 PM

Electropherogram Summary Continued ...



Overall Results for sample 5 : sample 5

Number of peaks found: 24 Corr. Area 1: 1,212.0
 Noise: 0.3

Peak table for sample 5 : sample 5

Peak	Size [bp]	Conc. [pg/μl]	Molarity [pmol/l]	Observations
1	35	125.00	5,411.3	Lower Marker
2	352	140.39	604.3	
3	368	43.01	177.0	
4	385	82.06	322.9	
5	400	70.27	265.9	
6	446	142.77	485.2	
7	457	60.76	201.3	
8	516	292.97	861.0	
9	523	302.09	875.2	
10	684	11.04	24.4	
11	900	6.16	10.4	
12	978	10.45	16.2	
13	1,089	9.49	13.2	
14	1,249	7.85	9.5	
15	1,382	6.06	6.6	
16	1,469	8.04	8.3	
17	1,595	5.54	5.3	
18	1,748	7.35	6.4	
19	1,915	6.91	5.5	
20	2,384	5.97	3.8	
21	2,608	8.94	5.2	
22	3,320	5.69	2.6	
23	7,050	6.62	1.4	
24	10,380	75.00	10.9	Upper Marker
25	12,362	0.00	0.0	
26	13,036	0.00	0.0	

Assay Class: High Sensitivity DNA Assay
Data Path: C:\...ents and Settings\Bioanalyzer\2012-02-24\2012-02-24_004.xad

Created: 2/24/2012 1:13:41 PM
Modified: 2/24/2012 1:45:25 PM

Electropherogram Summary Continued ...

... Region table for sample 5 :

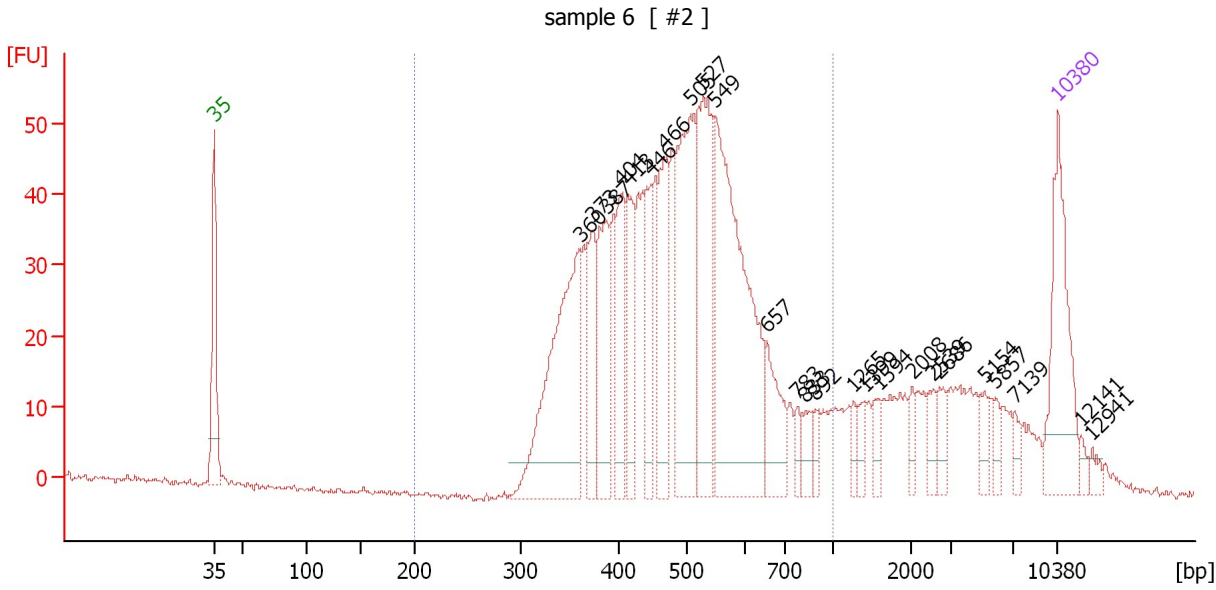
sample 5

From [bp]	Molarity [pmol/l]	Average Size [bp]	Conc. [pg/μl]	To [bp]	Corr. Area	% of Total	Size distribution in CV [%]	Color
200	4,176.4	487	1,257.65	1,000	1,212.0	86	23.5	■

Assay Class: High Sensitivity DNA Assay
 Data Path: C:\...ents and Settings\Bioanalyzer\2012-02-24\2012-02-24_004.xad

Created: 2/24/2012 1:13:41 PM
 Modified: 2/24/2012 1:45:25 PM

Electropherogram Summary Continued ...



Overall Results for sample 6 : sample 6

Number of peaks found: 25 Corr. Area 1: 1,019.0
 Noise: 0.4

Peak table for sample 6 : sample 6

Peak	Size [bp]	Conc. [pg/μl]	Molarity [pmol/l]	Observations
1	35	125.00	5,411.3	Lower Marker
2	360	214.83	904.5	
3	373	60.20	244.5	
4	387	84.30	330.3	
5	404	64.63	242.6	
6	413	60.66	222.5	
7	446	50.56	171.6	
8	466	79.93	259.9	
9	505	158.31	475.1	
10	527	137.67	395.5	
11	549	253.95	700.9	
12	657	45.93	105.9	
13	783	11.05	21.4	
14	833	14.33	26.1	
15	892	10.40	17.7	
16	1,265	9.12	10.9	
17	1,399	10.49	11.4	
18	1,594	11.14	10.6	
19	2,008	9.07	6.8	
20	2,539	11.69	7.0	
21	2,686	12.59	7.1	
22	5,154	11.01	3.2	
23	5,857	8.43	2.2	
24	7,139	7.75	1.6	
25	10,380	75.00	10.9	Upper Marker
26	12,141	0.00	0.0	


Assay Class: High Sensitivity DNA Assay
Data Path: C:\...ents and Settings\Bioanalyzer\2012-02-24\2012-02-24_004.xad

Created: 2/24/2012 1:13:41 PM
Modified: 2/24/2012 1:45:25 PM

Electropherogram Summary Continued ...**... Peak table for sample 6 : sample 6**

Peak	Size [bp]	Conc. [pg/μl]	Molarity [pmol/l]	Observations
27	12,941	0.00	0.0	

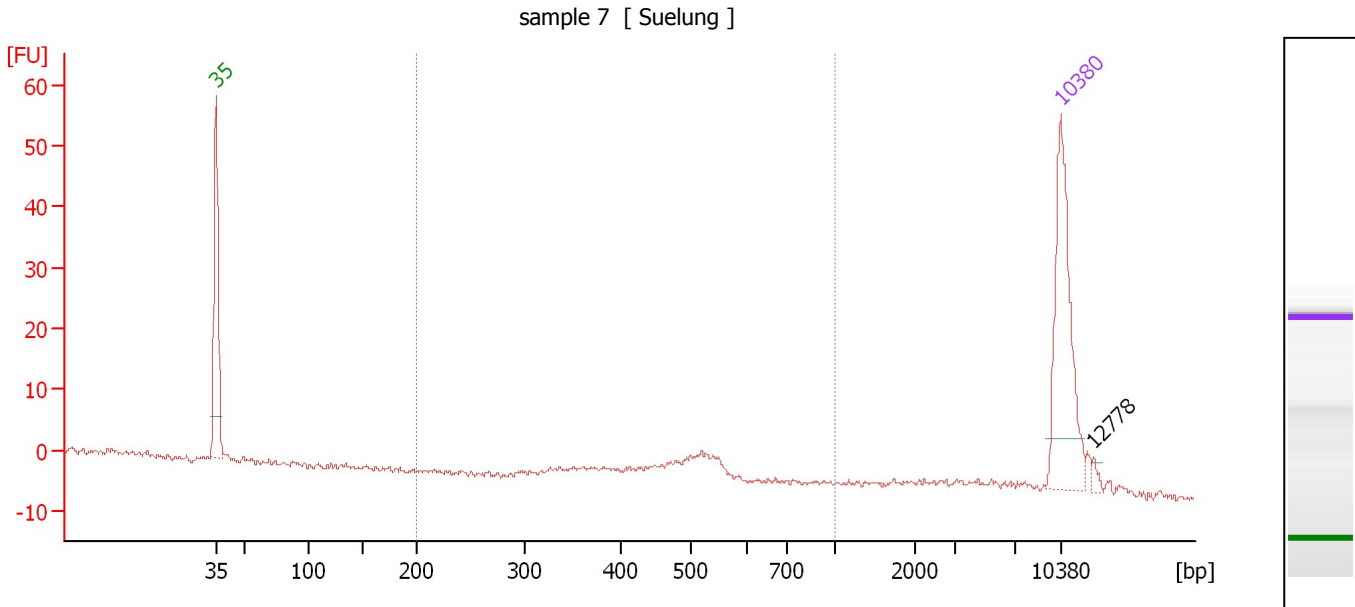
Region table for sample 6 : sample 6

From [bp]	Molarity [pmol/l]	Average Size [bp]	Conc. [pg/μl]	To [bp]	Corr. Area	% of Total	Size distribution in CV [%]	Color
200	4,758.2	495	1,439.99	1,000	1,019.0	81	25.5	

Assay Class: High Sensitivity DNA Assay
 Data Path: C:\...ents and Settings\Bioanalyzer\2012-02-24\2012-02-24_004.xad

Created: 2/24/2012 1:13:41 PM
 Modified: 2/24/2012 1:45:25 PM

Electropherogram Summary Continued ...



Overall Results for sample 7 : sample 7

Number of peaks found: 1 Corr. Area 1: 26.8
 Noise: 0.4

Peak table for sample 7 : sample 7

Peak	Size [bp]	Conc. [pg/μl]	Molarity [pmol/l]	Observations
1	35	125.00	5,411.3	Lower Marker
2	10,380	75.00	10.9	Upper Marker
3	12,778	0.00	0.0	

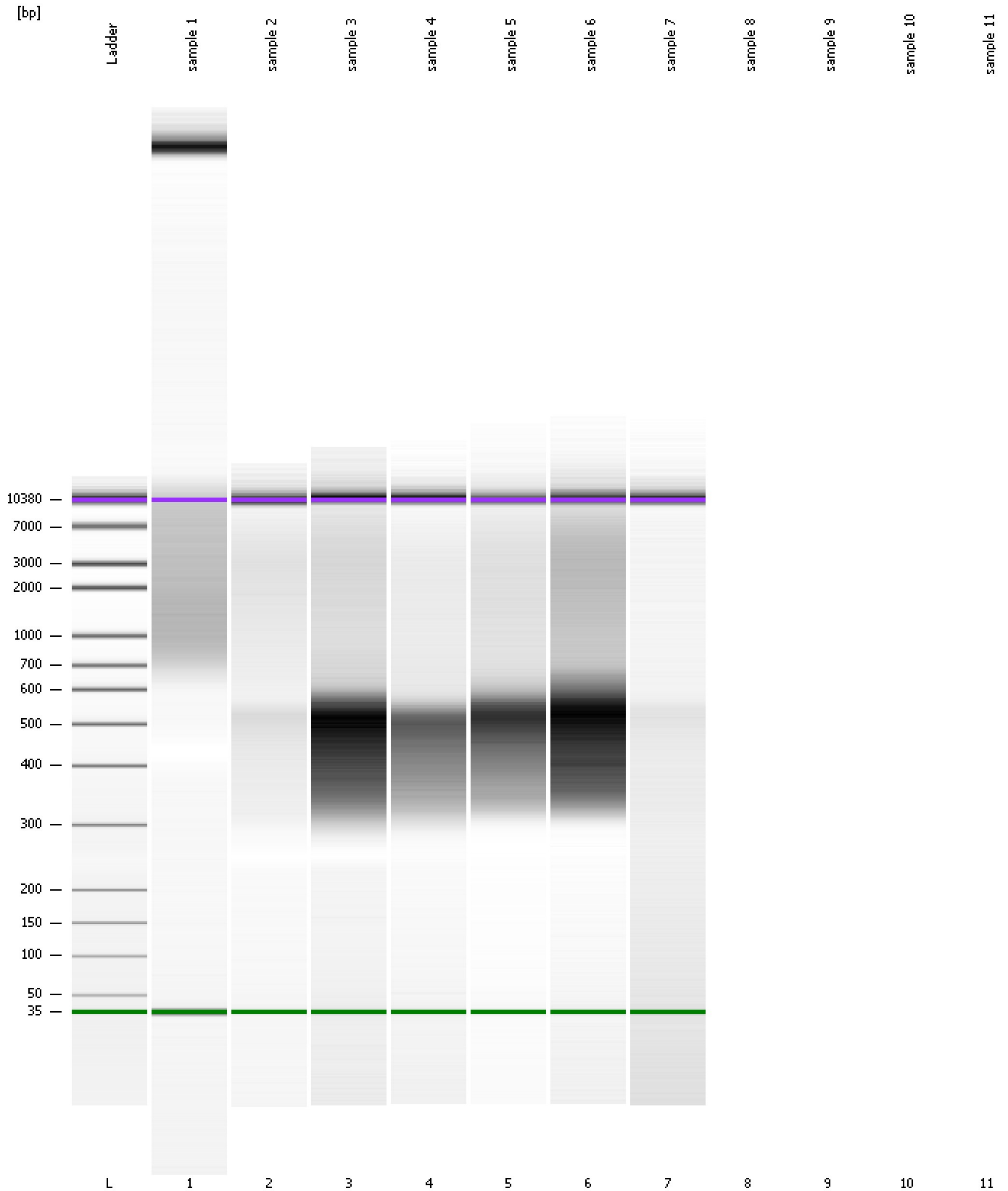
Region table for sample 7 : sample 7

From [bp]	Molarity [pmol/l]	Average Size [bp]	Conc. [pg/μl]	To [bp]	Corr. Area	% of Total	Size distribution in CV [%]	Color
200	111.1	483	34.48	1,000	26.8	58	13.3	Blue

Assay Class: High Sensitivity DNA Assay
Data Path: C:\...ents and Settings\Bioanalyzer\2012-02-24\2012-02-24_004.xad

Created: 2/24/2012 1:13:41 PM
Modified: 2/24/2012 1:45:25 PM

Gel Image

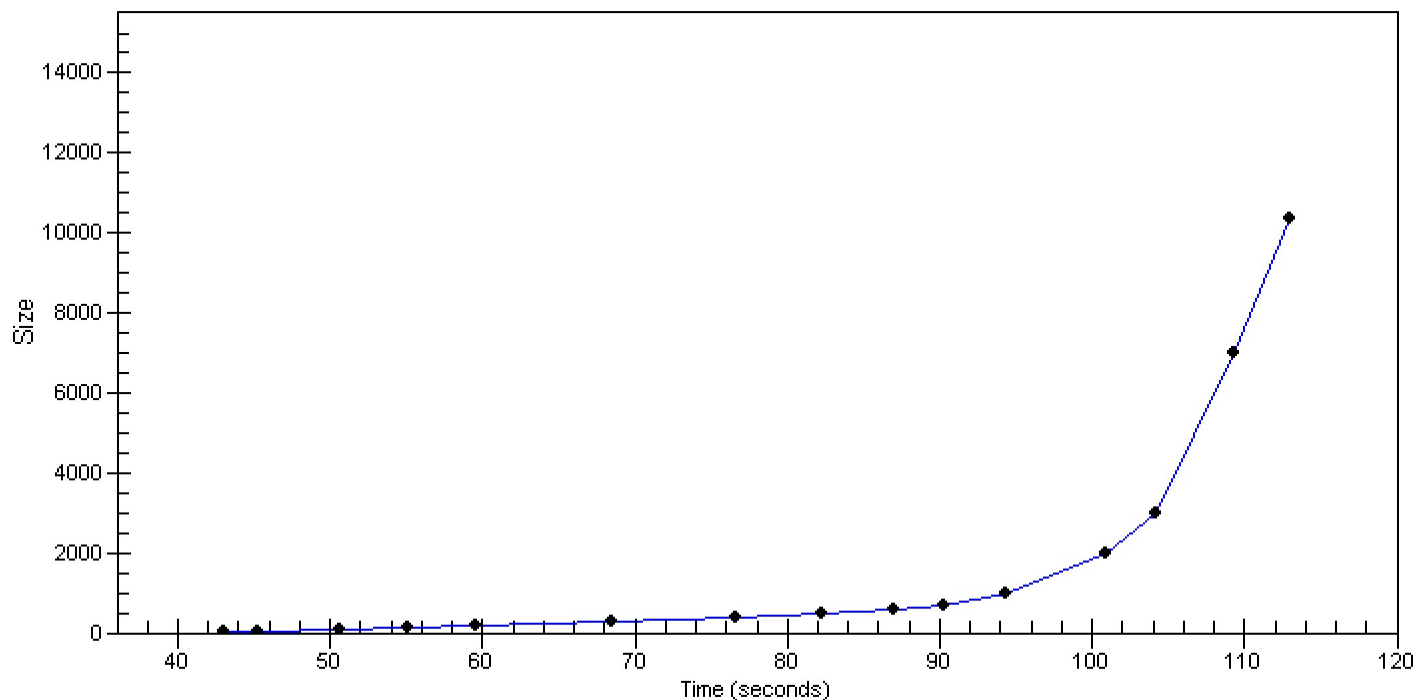


Assay Class: High Sensitivity DNA Assay
Data Path: C:\...ents and Settings\Bioanalyzer\2012-02-24\2012-02-24_004.xad

Created: 2/24/2012 1:13:41 PM
Modified: 2/24/2012 1:45:25 PM

Curves

Standard Curve



Assay Class: High Sensitivity DNA Assay
 Data Path: C:\...ents and Settings\Bioanalyzer\2012-02-24\2012-02-24_004.xad

Created: 2/24/2012 1:13:41 PM
 Modified: 2/24/2012 1:45:25 PM

Run Logbook

Description	Number	Source	Category	Sub Category	Time	Time Zone	User	Host
Run ended on port 1 (Number of wells acquired: 8)		Instrument	Run		2/24/2012 1:43:32 PM	(GMT --08:00) Pacific Standard Time	UC Davis	D8XSMGH1
Run started on port 1 (File: C:\Documents and Settings\Bioanalyzer\2012-02-24\2012-02-24_004.xad)		Instrument	Run		2/24/2012 1:13:47 PM	(GMT --08:00) Pacific Standard Time	UC Davis	D8XSMGH1
Product Number : G2938B		Instrument	Run		2/24/2012 1:13:47 PM	(GMT --08:00) Pacific Standard Time	UC Davis	D8XSMGH1
Name :		Instrument	Run		2/24/2012 1:13:47 PM	(GMT --08:00) Pacific Standard Time	UC Davis	D8XSMGH1
Vendor : Agilent Technologies		Instrument	Run		2/24/2012 1:13:47 PM	(GMT --08:00) Pacific Standard Time	UC Davis	D8XSMGH1
Serial# : DE13701086		Instrument	Run		2/24/2012 1:13:47 PM	(GMT --08:00) Pacific Standard Time	UC Davis	D8XSMGH1
Firmware : C.01.069		Instrument	Run		2/24/2012 1:13:47 PM	(GMT --08:00) Pacific Standard Time	UC Davis	D8XSMGH1
Cartridge : Electrode		Instrument	Run		2/24/2012 1:13:47 PM	(GMT --08:00) Pacific Standard Time	UC Davis	D8XSMGH1