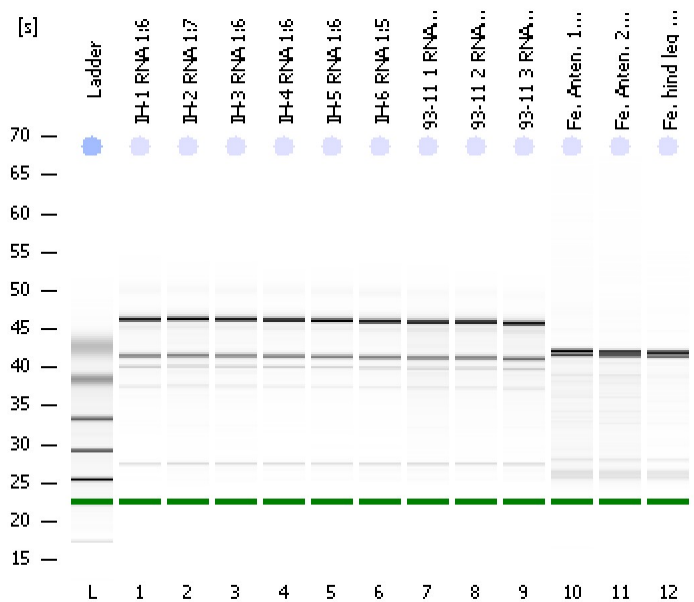


Assay Class: Eukaryote Total RNA Nano
 Data Path: C:\...ents and Settings\Bioanalyzer\2012-12-10\2012-12-10_002.xad

Created: 12/10/2012 12:34:47 PM
 Modified: 12/10/2012 1:00:16 PM

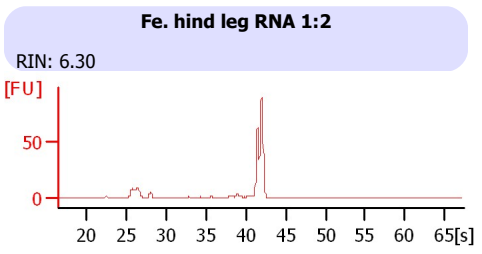
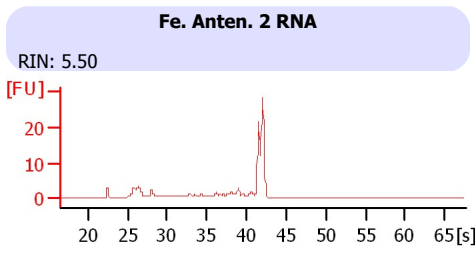
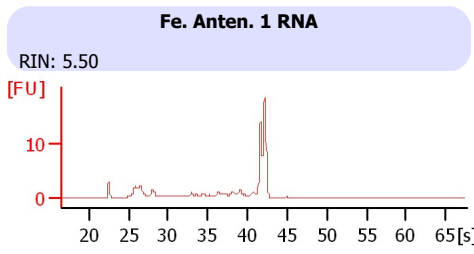
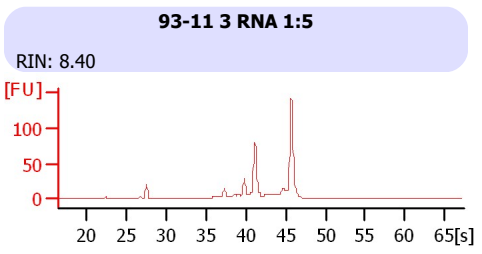
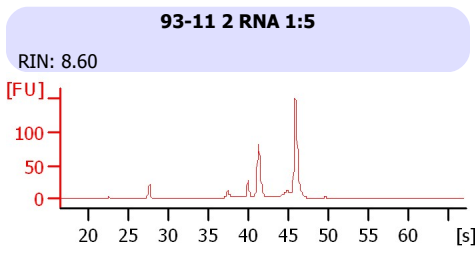
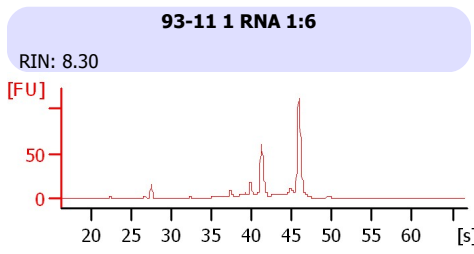
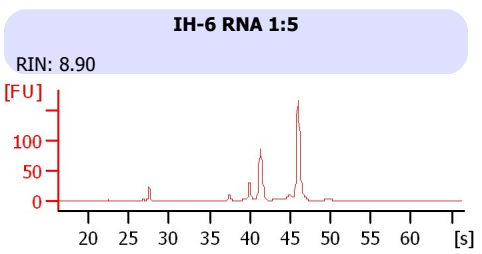
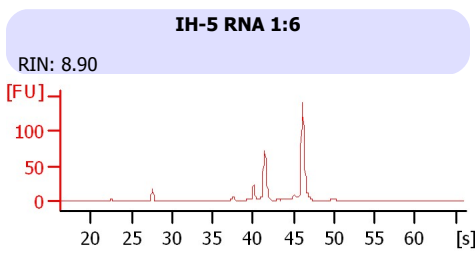
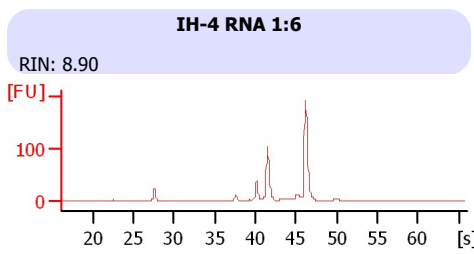
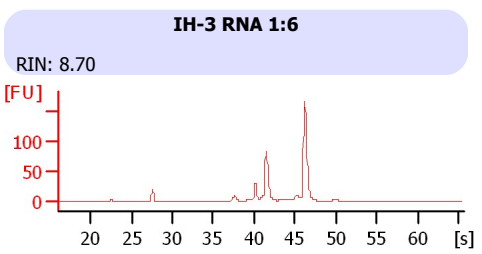
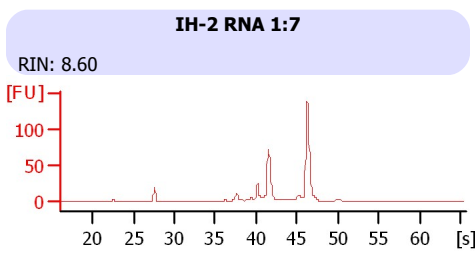
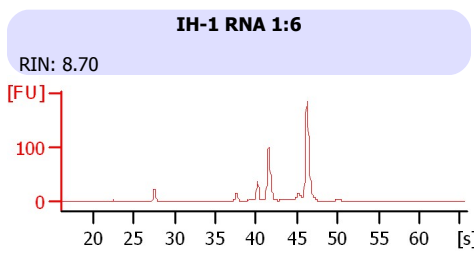
Electrophoresis File Run Summary



Instrument Information:
 Instrument Name: DE13701086 Firmware: C.01.069
 Serial#: DE13701086 Type: G2938B

Assay Information:
 Assay Origin Path: C:\Program Files\Agilent\2100 bioanalyzer\2100 expert\assays\RNA\Eukaryote Total RNA Nano Series II.xsy
 Assay Class: Eukaryote Total RNA Nano
 Version: 2.6
 Assay Comments: Total RNA Analysis ng sensitivity (Eukaryote)

Chip Information:
 Chip Lot #:
 Reagent Kit Lot #:
 Chip Comments:
 © Copyright 2003 - 2009 Agilent Technologies, Inc.



Assay Class: Eukaryote Total RNA Nano
Data Path: C:\...ents and Settings\Bioanalyzer\2012-12-10\2012-12-10_002.xad

Created: 12/10/2012 12:34:47 PM
Modified: 12/10/2012 1:00:16 PM

Electrophoresis File Run Summary (Chip Summary)

Sample Name	Sample Comment	Status	Result Label	Result Color
IH-1 RNA 1:6		✓	RIN: 8.70	
IH-2 RNA 1:7		✓	RIN: 8.60	
IH-3 RNA 1:6		✓	RIN: 8.70	
IH-4 RNA 1:6		✓	RIN: 8.90	
IH-5 RNA 1:6		✓	RIN: 8.90	
IH-6 RNA 1:5		✓	RIN: 8.90	
93-11 1 RNA 1:6		✓	RIN: 8.30	
93-11 2 RNA 1:5		✓	RIN: 8.60	
93-11 3 RNA 1:5		✓	RIN: 8.40	
Fe. Anten. 1 RNA		✓	RIN: 5.50	
Fe. Anten. 2 RNA		✓	RIN: 5.50	
Fe. hind leg RNA 1:2		✓	RIN: 6.30	
Ladder		✓	All Other Samples	

Chip Lot #

Reagent Kit Lot #

Chip Comments :

Assay Class: Eukaryote Total RNA Nano
Data Path: C:\...ents and Settings\Bioanalyzer\2012-12-10\2012-12-10_002.xad

Created: 12/10/2012 12:34:47 PM
Modified: 12/10/2012 1:00:16 PM

Electrophoresis Assay Details

General Analysis Settings

Number of Available Sample and Ladder Wells (Max.) : 13
Minimum Visible Range [s] : 17
Maximum Visible Range [s] : 70
Start Analysis Time Range [s] : 19
End Analysis Time Range [s] : 69
Ladder Concentration [ng/ μ l] : 150
Lower Marker Concentration [ng/ μ l] : 0
Upper Marker Concentration [ng/ μ l] : 0
Used Lower Marker for Quantitation
Standard Curve Fit is Logarithmic
Show Data Aligned to Lower Marker

Integrator Settings

Integration Start Time [s] : 19
Integration End Time [s] : 69
Slope Threshold : 0.6
Height Threshold [FU] : 0.5
Area Threshold : 0.2
Width Threshold [s] : 0.5
Baseline Plateau [s] : 6

Filter Settings

Filter Width [s] : 0.5
Polynomial Order : 4

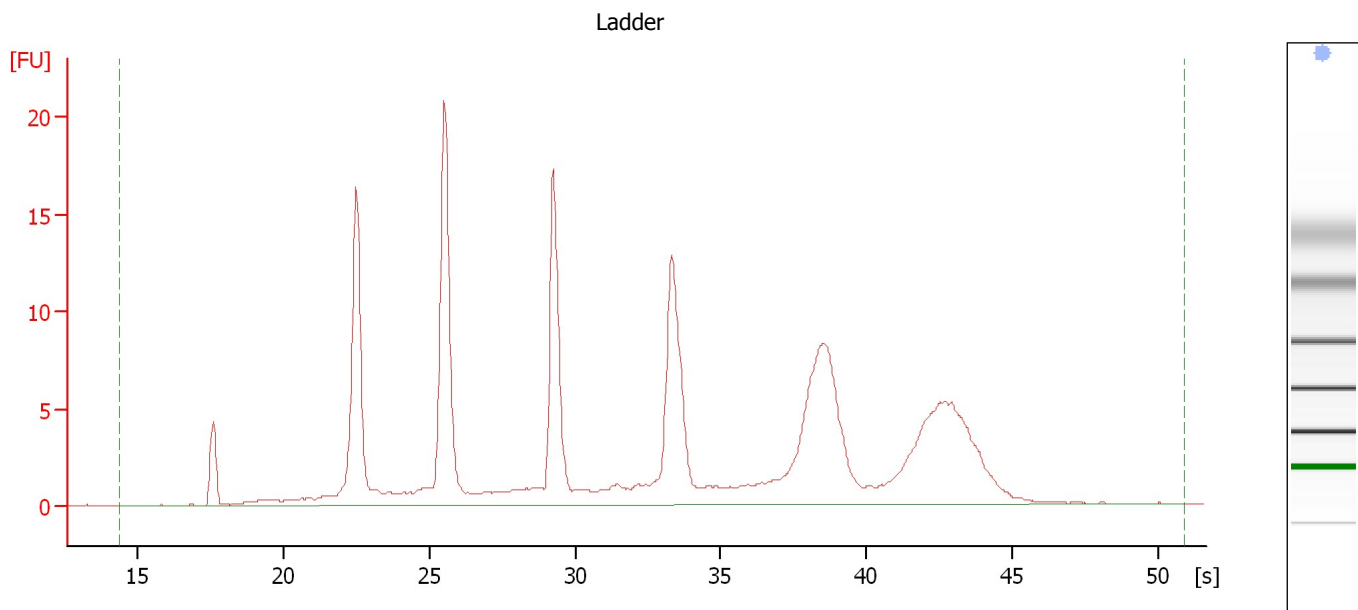
Ladder

Ladder Peak	Size
1	25
2	200
3	500
4	1000
5	2000
6	4000

Assay Class: Eukaryote Total RNA Nano
Data Path: C:\...ents and Settings\Bioanalyzer\2012-12-10\2012-12-10_002.xad

Created: 12/10/2012 12:34:47 PM
Modified: 12/10/2012 1:00:16 PM

Electropherogram Summary



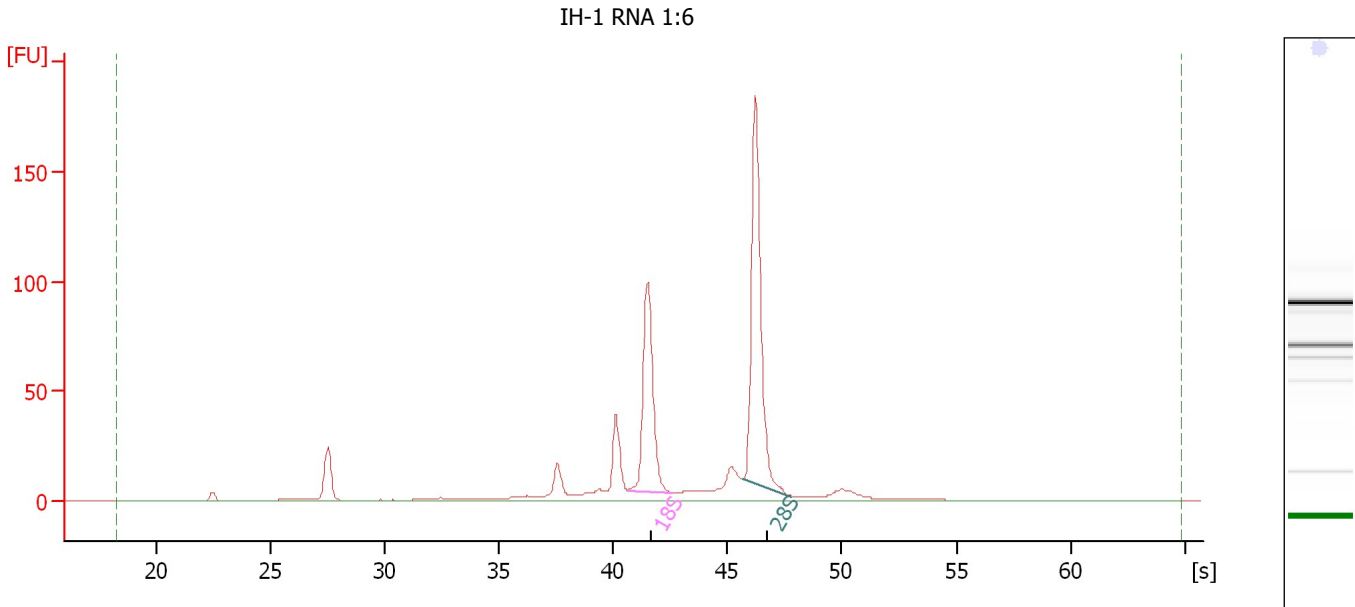
Overall Results for Ladder

RNA Area:	177.1	Result Flagging Color:	
RNA Concentration:	150 ng/μl	Result Flagging Label:	All Other Samples

Assay Class: Eukaryote Total RNA Nano
 Data Path: C:\...ents and Settings\Bioanalyzer\2012-12-10\2012-12-10_002.xad

Created: 12/10/2012 12:34:47 PM
 Modified: 12/10/2012 1:00:16 PM

Electropherogram Summary Continued ...



Overall Results for sample 1 : IH-1 RNA 1:6

RNA Area:	560.8	RNA Integrity Number (RIN):	8.7 (B.02.08, Anomaly Threshold(s) manually adapted)
RNA Concentration:	475 ng/μl	Result Flagging Color:	
rRNA Ratio [28s / 18s]:	1.6	Result Flagging Label:	RIN: 8.70

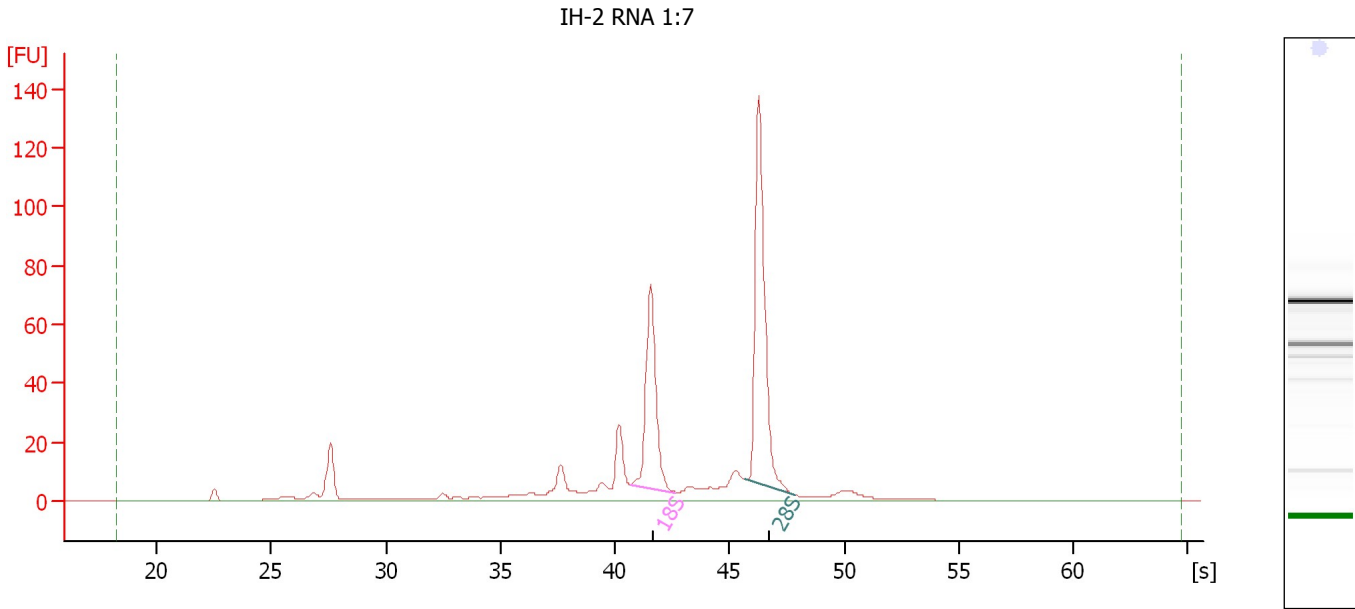
Fragment table for sample 1 : IH-1 RNA 1:6

Name	Start Time [s]	End Time [s]	Area	% of total Area
18S	40.68	42.65	112.5	20.1
28S	45.66	47.82	182.9	32.6

Assay Class: Eukaryote Total RNA Nano
Data Path: C:\...ents and Settings\Bioanalyzer\2012-12-10\2012-12-10_002.xad

Created: 12/10/2012 12:34:47 PM
Modified: 12/10/2012 1:00:16 PM

Electropherogram Summary Continued ...



Overall Results for sample 2 : IH-2 RNA 1:7

RNA Area: 451.5 RNA Integrity Number (RIN): 8.6 (B.02.08)
RNA Concentration: 382 ng/μl Result Flagging Color:
rRNA Ratio [28s / 18s]: 1.7 Result Flagging Label: RIN: 8.60

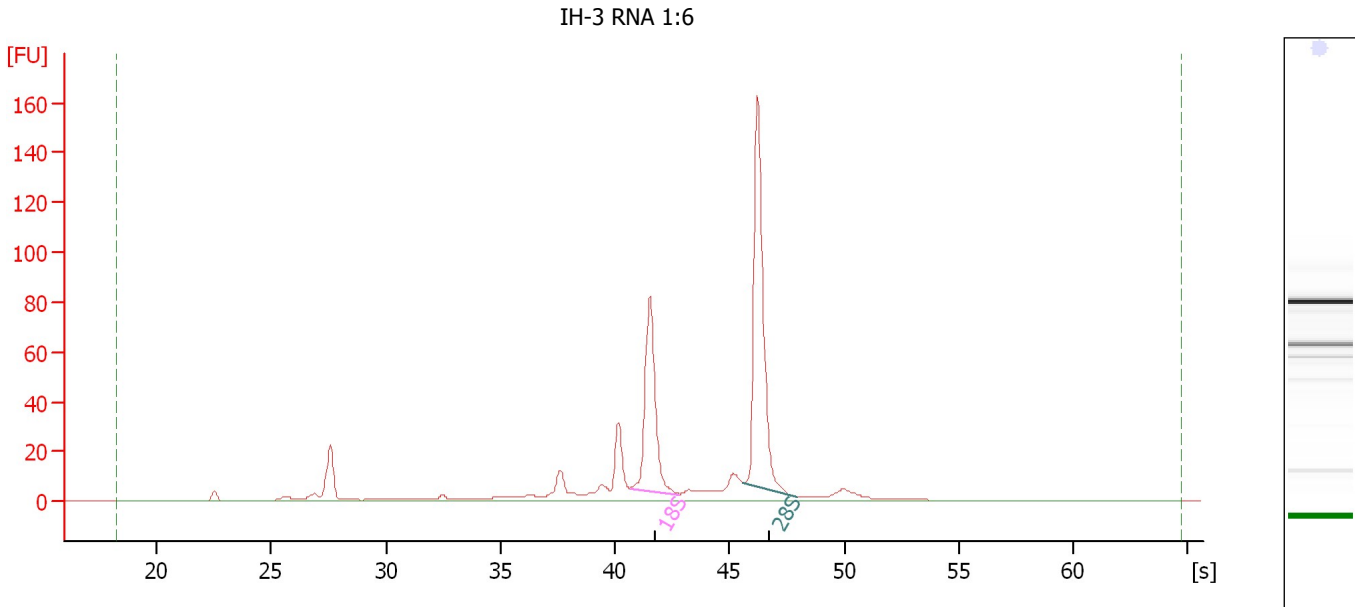
Fragment table for sample 2 : IH-2 RNA 1:7

Name	Start Time [s]	End Time [s]	Area	% of total Area
18S	40.69	42.66	83.3	18.5
28S	45.66	47.86	138.4	30.7

Assay Class: Eukaryote Total RNA Nano
Data Path: C:\...ents and Settings\Bioanalyzer\2012-12-10\2012-12-10_002.xad

Created: 12/10/2012 12:34:47 PM
Modified: 12/10/2012 1:00:16 PM

Electropherogram Summary Continued ...



Overall Results for sample 3 : IH-3 RNA 1:6

RNA Area:	495.4	RNA Integrity Number (RIN):	8.7 (B.02.08, Anomaly Threshold(s) manually adapted)
RNA Concentration:	420 ng/μl	Result Flagging Color:	
rRNA Ratio [28s / 18s]:	1.7	Result Flagging Label:	RIN: 8.70

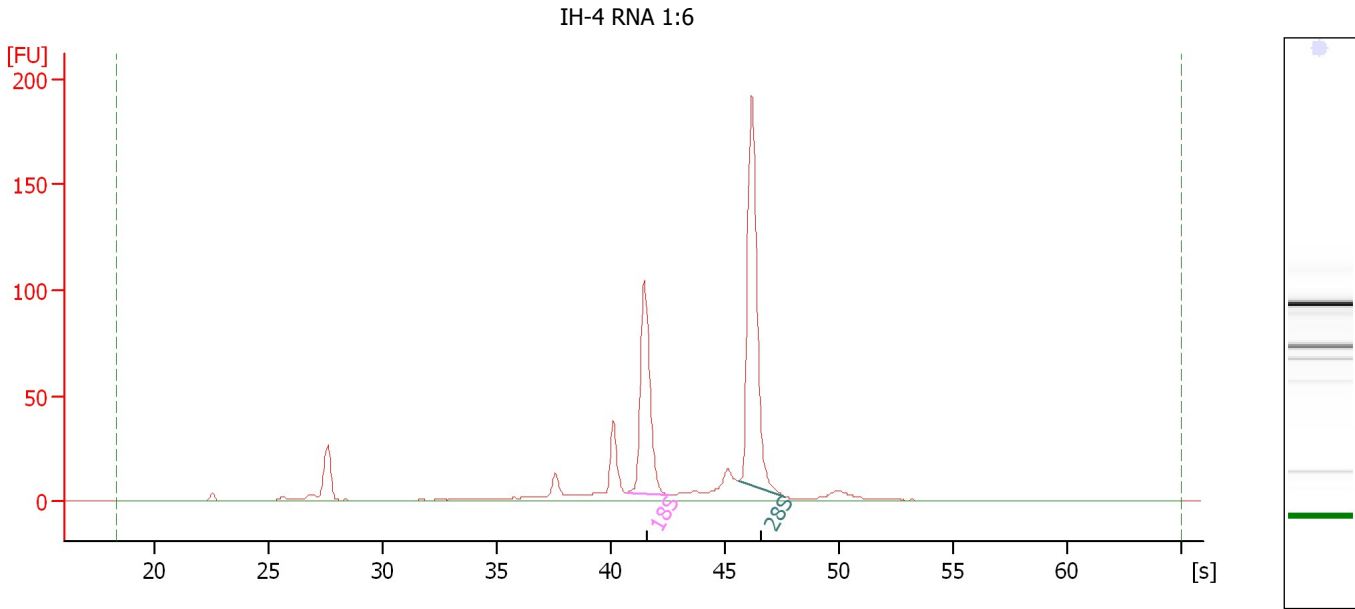
Fragment table for sample 3 : IH-3 RNA 1:6

Name	Start Time [s]	End Time [s]	Area	% of total Area
18S	40.69	42.80	95.1	19.2
28S	45.61	47.91	163.4	33.0

Assay Class: Eukaryote Total RNA Nano
Data Path: C:\...ents and Settings\Bioanalyzer\2012-12-10\2012-12-10_002.xad

Created: 12/10/2012 12:34:47 PM
Modified: 12/10/2012 1:00:16 PM

Electropherogram Summary Continued ...



Overall Results for sample 4 : IH-4 RNA 1:6

RNA Area: 552.5 RNA Integrity Number (RIN): 8.9 (B.02.08, Anomaly Threshold(s) manually adapted)
RNA Concentration: 468 ng/μl
rRNA Ratio [28s / 18s]: 1.6
Result Flagging Color:
Result Flagging Label: RIN: 8.90

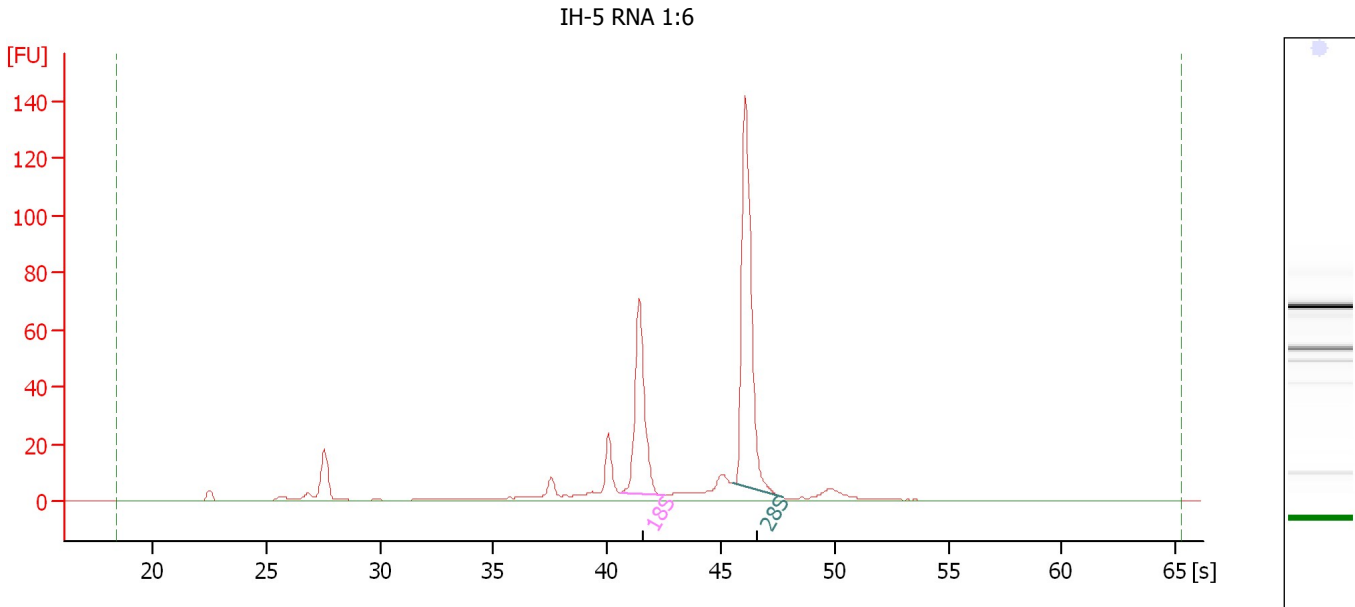
Fragment table for sample 4 : IH-4 RNA 1:6

Name	Start Time [s]	End Time [s]	Area	% of total Area
18S	40.67	42.55	115.4	20.9
28S	45.56	47.64	190.2	34.4

Assay Class: Eukaryote Total RNA Nano
 Data Path: C:\...ents and Settings\Bioanalyzer\2012-12-10\2012-12-10_002.xad

Created: 12/10/2012 12:34:47 PM
 Modified: 12/10/2012 1:00:16 PM

Electropherogram Summary Continued ...



Overall Results for sample 5 : IH-5 RNA 1:6

RNA Area:	399.5	RNA Integrity Number (RIN):	8.9 (B.02.08, Anomaly Threshold(s) manually adapted)
RNA Concentration:	338 ng/μl	Result Flagging Color:	
rRNA Ratio [28s / 18s]:	1.8	Result Flagging Label:	RIN: 8.90

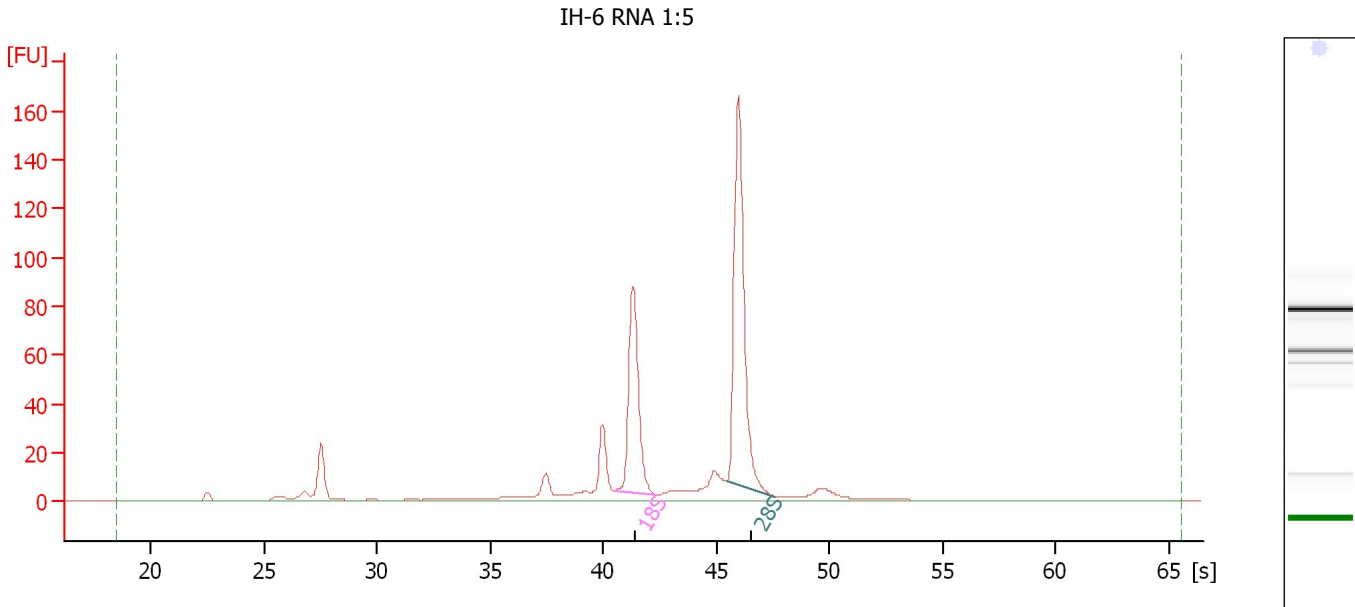
Fragment table for sample 5 : IH-5 RNA 1:6

Name	Start Time [s]	End Time [s]	Area	% of total Area
18S	40.60	42.54	80.7	20.2
28S	45.57	47.69	143.4	35.9

Assay Class: Eukaryote Total RNA Nano
Data Path: C:\...ents and Settings\Bioanalyzer\2012-12-10\2012-12-10_002.xad

Created: 12/10/2012 12:34:47 PM
Modified: 12/10/2012 1:00:16 PM

Electropherogram Summary Continued ...



Overall Results for sample 6 : IH-6 RNA 1:5

RNA Area: 505.9 RNA Integrity Number (RIN): 8.9 (B.02.08, Anomaly Threshold(s) manually adapted)
RNA Concentration: 429 ng/μl
rRNA Ratio [28s / 18s]: 1.7
Result Flagging Color:
Result Flagging Label: RIN: 8.90

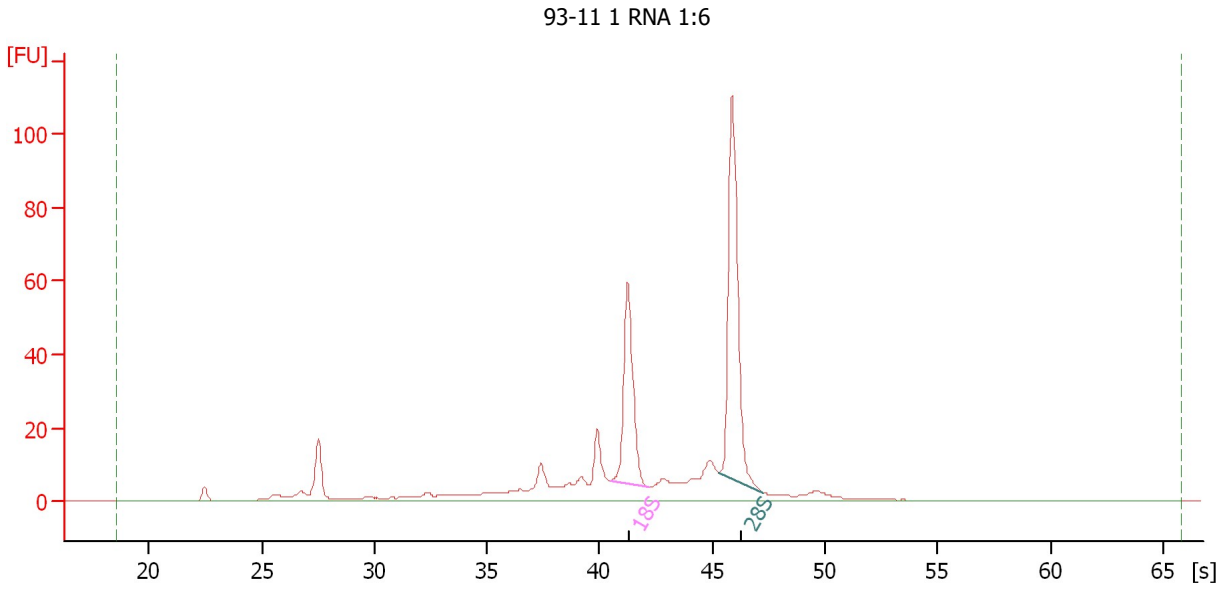
Fragment table for sample 6 : IH-6 RNA 1:5

Name	Start Time [s]	End Time [s]	Area	% of total Area
18S	40.49	42.39	100.5	19.9
28S	45.43	47.61	173.4	34.3

Assay Class: Eukaryote Total RNA Nano
 Data Path: C:\...ents and Settings\Bioanalyzer\2012-12-10\2012-12-10_002.xad

Created: 12/10/2012 12:34:47 PM
 Modified: 12/10/2012 1:00:16 PM

Electropherogram Summary Continued ...



Overall Results for sample 7 : 93-11 1 RNA 1:6

RNA Area:	408.1	RNA Integrity Number (RIN):	8.3 (B.02.08)
RNA Concentration:	346 ng/μl	Result Flagging Color:	
rRNA Ratio [28s / 18s]:	1.7	Result Flagging Label:	RIN: 8.30

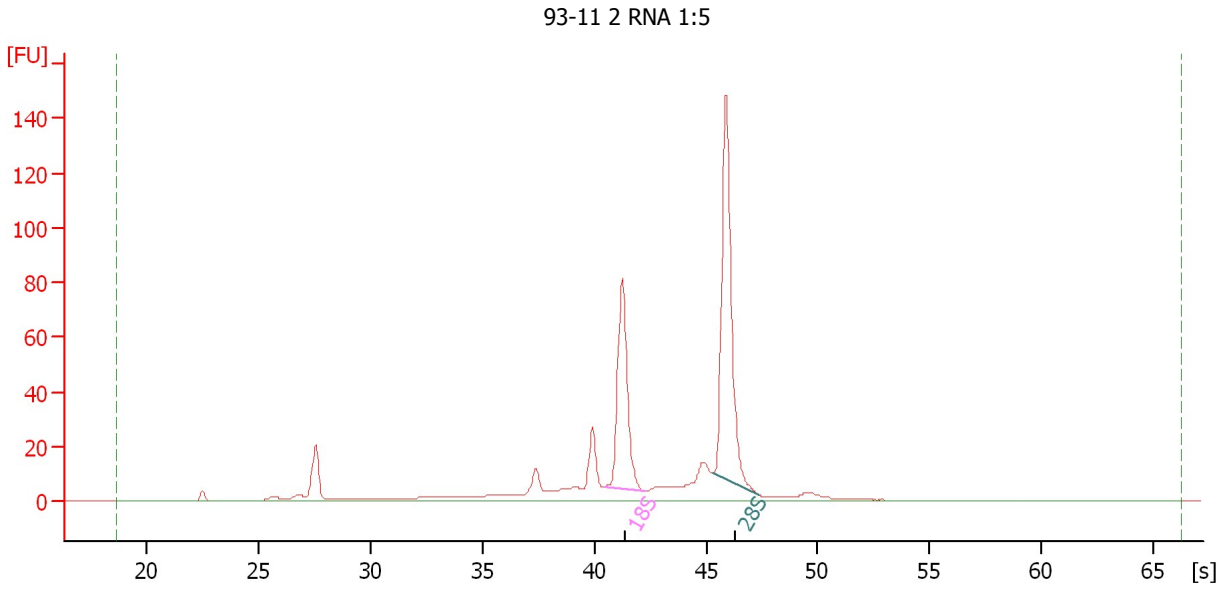
Fragment table for sample 7 : 93-11 1 RNA 1:6

Name	Start Time [s]	End Time [s]	Area	% of total Area
18S	40.47	42.19	63.7	15.6
28S	45.29	47.29	108.0	26.5

Assay Class: Eukaryote Total RNA Nano
Data Path: C:\...ents and Settings\Bioanalyzer\2012-12-10\2012-12-10_002.xad

Created: 12/10/2012 12:34:47 PM
Modified: 12/10/2012 1:00:16 PM

Electropherogram Summary Continued ...



Overall Results for sample 8 : 93-11 2 RNA 1:5

RNA Area: 496.7 RNA Integrity Number (RIN): 8.6 (B.02.08)
RNA Concentration: 421 ng/μl Result Flagging Color:
rRNA Ratio [28s / 18s]: 1.6 Result Flagging Label: RIN: 8.60

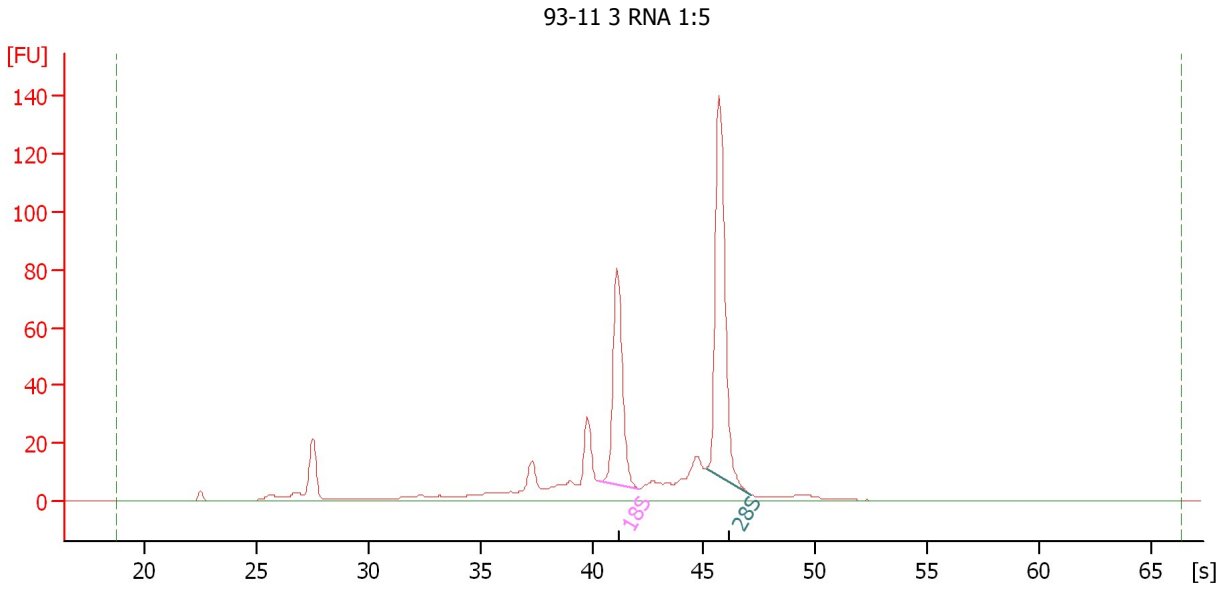
Fragment table for sample 8 : 93-11 2 RNA 1:5

Name	Start Time [s]	End Time [s]	Area	% of total Area
18S	40.44	42.27	92.7	18.7
28S	45.29	47.40	152.1	30.6

Assay Class: Eukaryote Total RNA Nano
Data Path: C:\...ents and Settings\Bioanalyzer\2012-12-10\2012-12-10_002.xad

Created: 12/10/2012 12:34:47 PM
Modified: 12/10/2012 1:00:16 PM

Electropherogram Summary Continued ...



Overall Results for sample 9 : 93-11 3 RNA 1:5

RNA Area: 512.7 RNA Integrity Number (RIN): 8.4 (B.02.08)
RNA Concentration: 434 ng/μl Result Flagging Color:
rRNA Ratio [28s / 18s]: 1.6 Result Flagging Label: RIN: 8.40

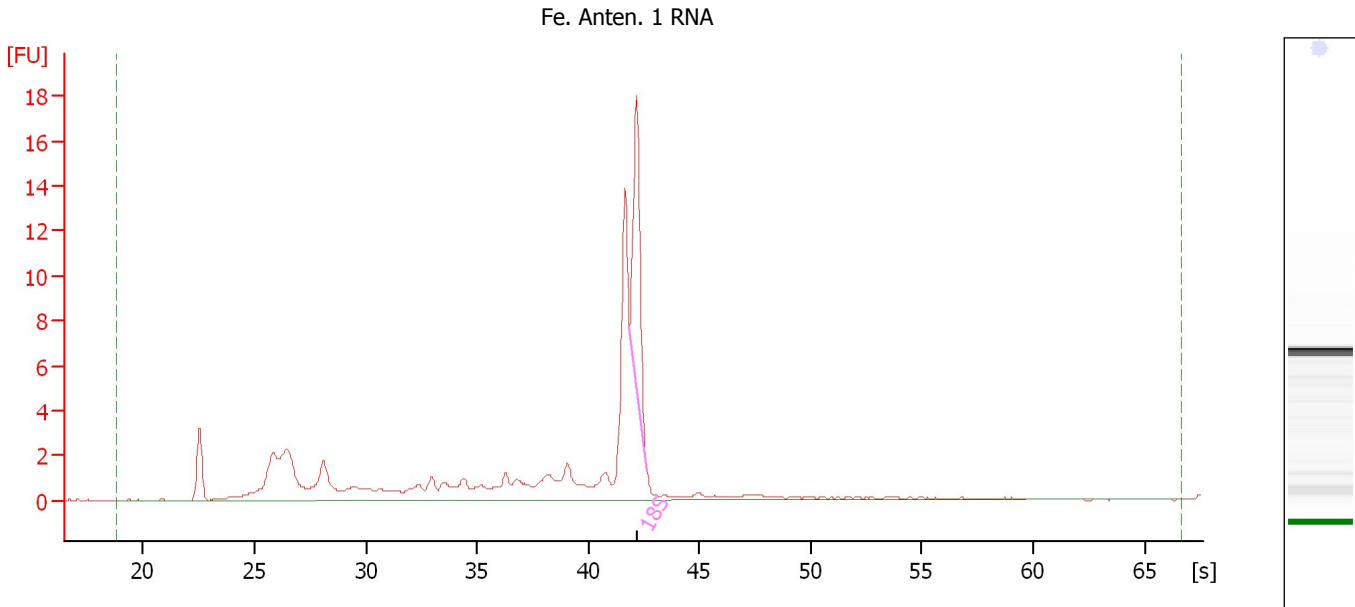
Fragment table for sample 9 : 93-11 3 RNA 1:5

Name	Start Time [s]	End Time [s]	Area	% of total Area
18S	40.29	42.07	87.4	17.0
28S	45.10	47.07	142.0	27.7

Assay Class: Eukaryote Total RNA Nano
Data Path: C:\...ents and Settings\Bioanalyzer\2012-12-10\2012-12-10_002.xad

Created: 12/10/2012 12:34:47 PM
Modified: 12/10/2012 1:00:16 PM

Electropherogram Summary Continued ...



Overall Results for sample 10 : Fe. Anten. 1 RNA

RNA Area:	75.9	RNA Integrity Number (RIN):	5.5 (B.02.08)
RNA Concentration:	64 ng/μl	Result Flagging Color:	
rRNA Ratio [28s / 18s]:	0.0	Result Flagging Label:	RIN: 5.50

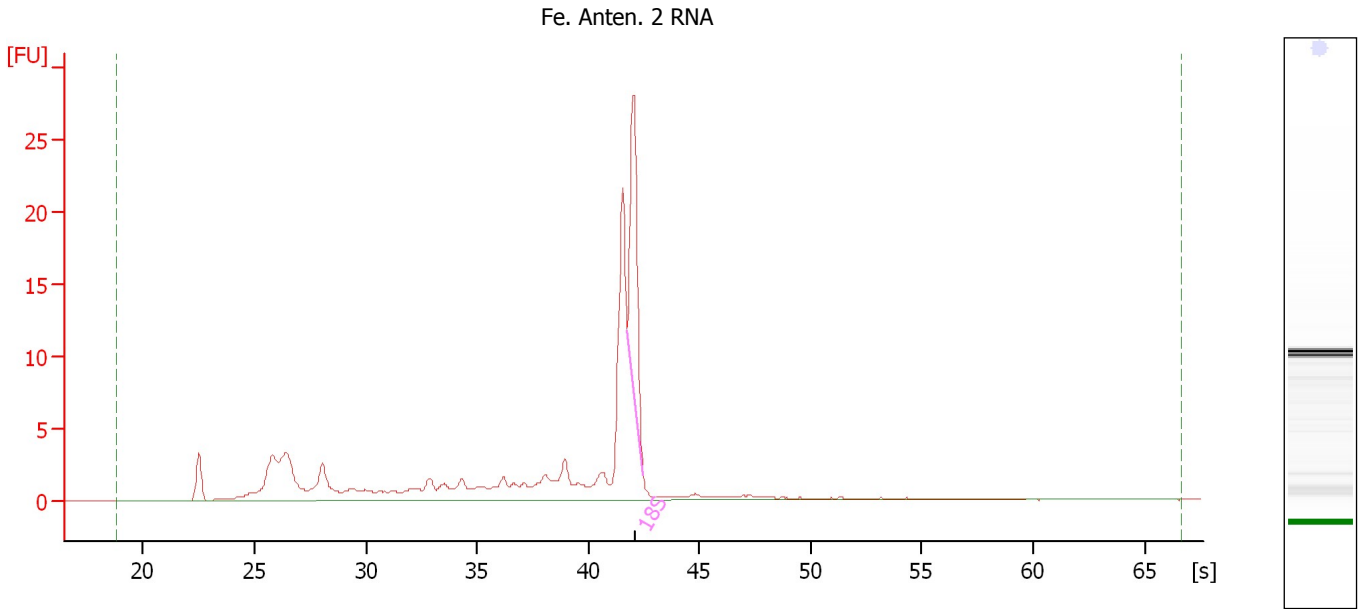
Fragment table for sample 10 : Fe. Anten. 1 RNA

Name	Start Time [s]	End Time [s]	Area	% of total Area
18S	41.86	42.63	10.4	13.8

Assay Class: Eukaryote Total RNA Nano
Data Path: C:\...ents and Settings\Bioanalyzer\2012-12-10\2012-12-10_002.xad

Created: 12/10/2012 12:34:47 PM
Modified: 12/10/2012 1:00:16 PM

Electropherogram Summary Continued ...



Overall Results for sample 11 : Fe. Anten. 2 RNA

RNA Area:	113.5	RNA Integrity Number (RIN):	5.5 (B.02.08)
RNA Concentration:	96 ng/μl	Result Flagging Color:	
rRNA Ratio [28s / 18s]:	0.0	Result Flagging Label:	RIN: 5.50

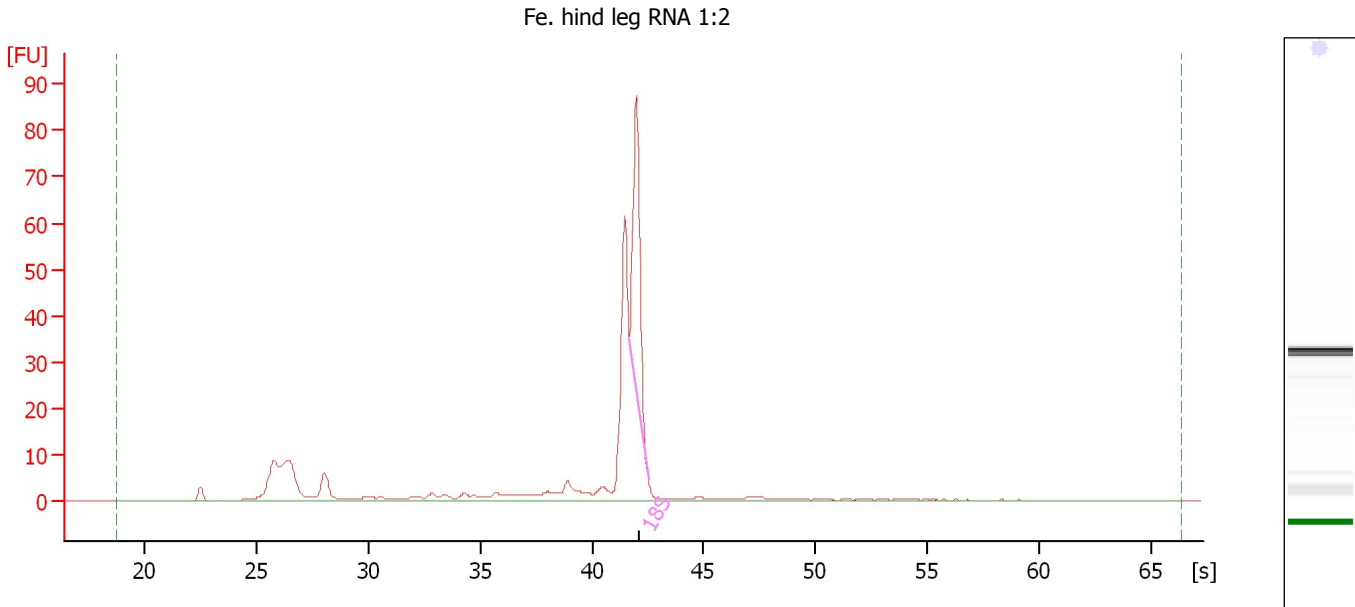
Fragment table for sample 11 : Fe. Anten. 2 RNA

Name	Start Time [s]	End Time [s]	Area	% of total Area
18S	41.77	42.49	15.7	13.8

Assay Class: Eukaryote Total RNA Nano
Data Path: C:\...ents and Settings\Bioanalyzer\2012-12-10\2012-12-10_002.xad

Created: 12/10/2012 12:34:47 PM
Modified: 12/10/2012 1:00:16 PM

Electropherogram Summary Continued ...



Overall Results for sample 12 : Fe. hind leg RNA 1:2

RNA Area:	253.8	RNA Integrity Number (RIN):	6.3 (B.02.08, Anomaly Threshold(s) manually adapted)
RNA Concentration:	215 ng/μl		
rRNA Ratio [28s / 18s]:	0.0	Result Flagging Color:	
		Result Flagging Label:	RIN: 6.30

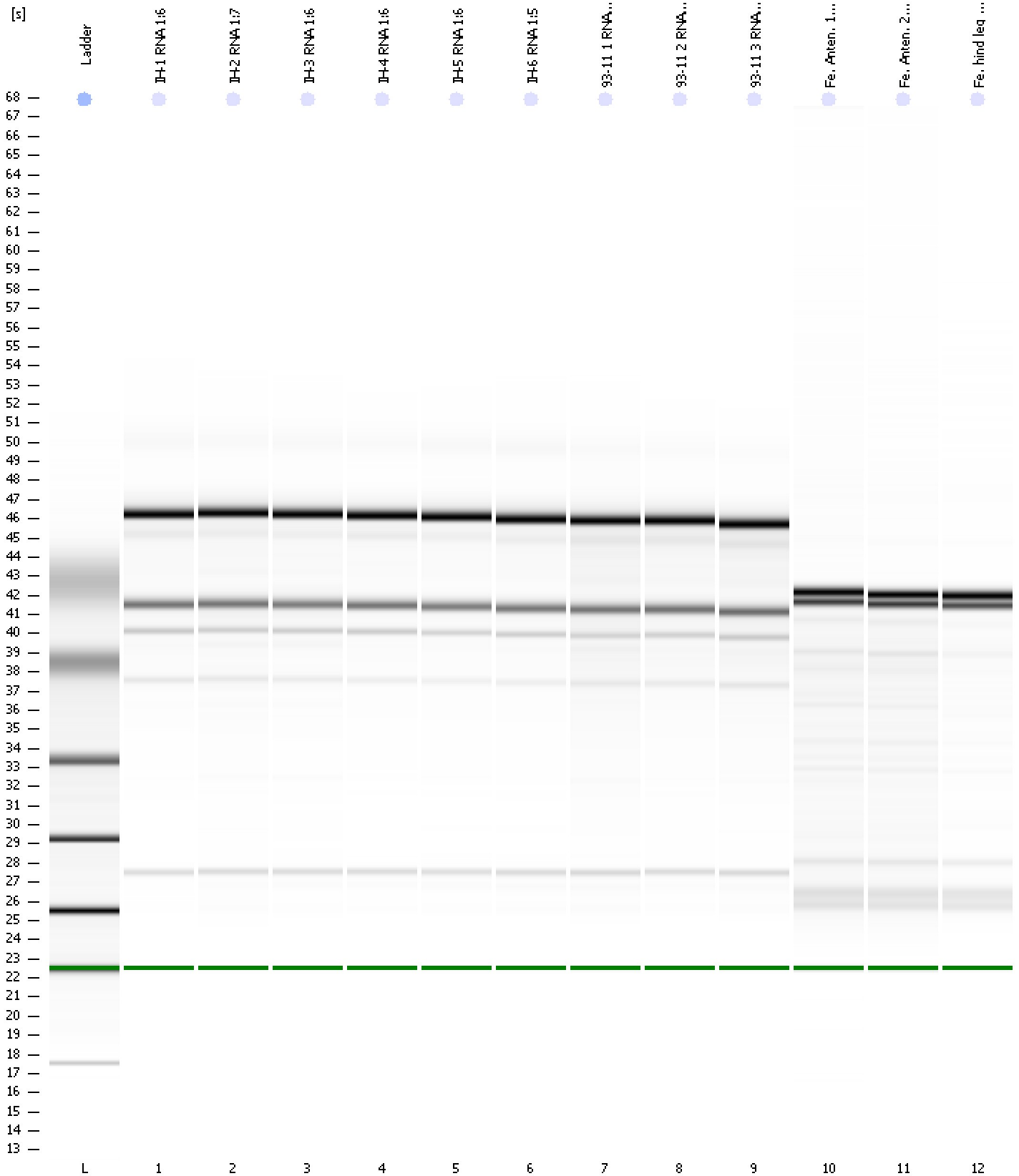
Fragment table for sample 12 : Fe. hind leg RNA 1:2

Name	Start Time [s]	End Time [s]	Area	% of total Area
18S	41.68	42.50	53.0	20.9

Assay Class: Eukaryote Total RNA Nano
Data Path: C:\...ents and Settings\Bioanalyzer\2012-12-10\2012-12-10_002.xad

Created: 12/10/2012 12:34:47 PM
Modified: 12/10/2012 1:00:16 PM

Gel Image



Assay Class: Eukaryote Total RNA Nano
 Data Path: C:\...ents and Settings\Bioanalyzer\2012-12-10\2012-12-10_002.xad

Created: 12/10/2012 12:34:47 PM
 Modified: 12/10/2012 1:00:16 PM

Run Logbook

Description	Number	Source	Category	Sub Category	Time	Time Zone	User	Host
Run ended on port 1 (Number of wells acquired: 13)		Instrument	Run		12/10/2012 12:58:38 PM	(GMT --08:00) Pacific Standard Time	UC Davis	D8XSMGH1
Run started on port 1 (File: C:\Documents and Settings\Bioanalyzer\2012-12-10\2012-12-10_002.xad)		Instrument	Run		12/10/2012 12:34:53 PM	(GMT --08:00) Pacific Standard Time	UC Davis	D8XSMGH1
Product Number : G2938B		Instrument	Run		12/10/2012 12:34:53 PM	(GMT --08:00) Pacific Standard Time	UC Davis	D8XSMGH1
Name :		Instrument	Run		12/10/2012 12:34:53 PM	(GMT --08:00) Pacific Standard Time	UC Davis	D8XSMGH1
Vendor : Agilent Technologies		Instrument	Run		12/10/2012 12:34:53 PM	(GMT --08:00) Pacific Standard Time	UC Davis	D8XSMGH1
Serial# : DE13701086		Instrument	Run		12/10/2012 12:34:53 PM	(GMT --08:00) Pacific Standard Time	UC Davis	D8XSMGH1
Firmware : C.01.069		Instrument	Run		12/10/2012 12:34:53 PM	(GMT --08:00) Pacific Standard Time	UC Davis	D8XSMGH1
Cartridge : Electrode		Instrument	Run		12/10/2012 12:34:53 PM	(GMT --08:00) Pacific Standard Time	UC Davis	D8XSMGH1