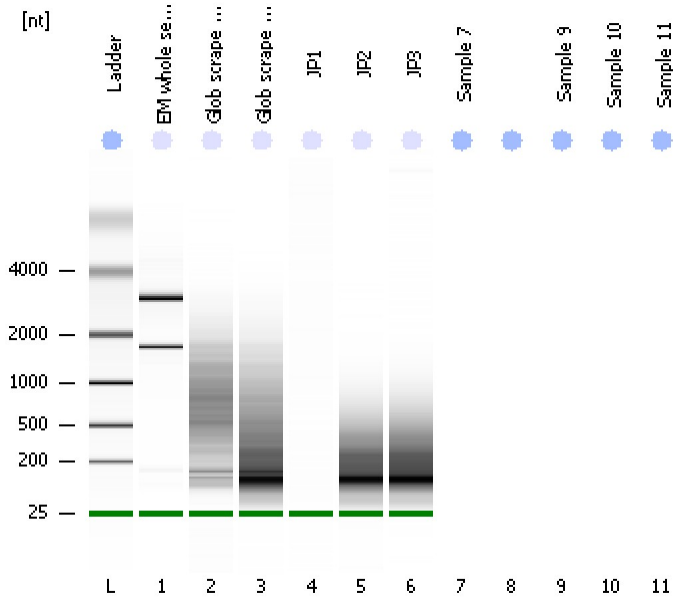


Assay Class: Eukaryote Total RNA Pico
Data Path: C:\...ents and Settings\Bioanalyzer\2012-07-02\2012-07-02_003.xad

Created: 7/2/2012 2:06:28 PM
Modified: 7/2/2012 2:22:23 PM

Electrophoresis File Run Summary



Instrument Information:

Instrument Name: DE13701086 Firmware: C.01.069
Serial#: DE13701086 Type: G2938B

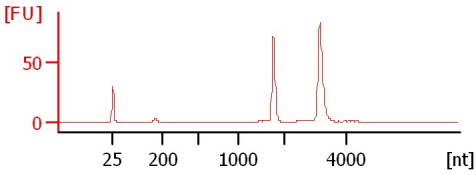
Assay Information:

Assay Origin Path: C:\Program Files\Agilent\2100 bioanalyzer\2100 expert\assays\RNA\Eukaryote Total RNA Pico Series II.xsy
Assay Class: Eukaryote Total RNA Pico
Version: 2.6
Assay Comments: Total RNA Analysis pg sensitivity (Eukaryote)
© Copyright 2003 - 2009 Agilent Technologies, Inc.

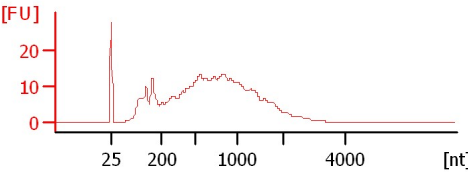
Chip Information:

Chip Lot #:
Reagent Kit Lot #:
Chip Comments:

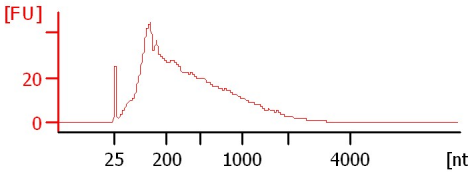
EM whole seed control
RIN:10



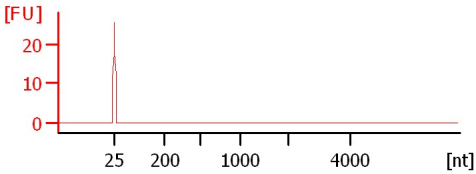
Glob scrape embed 6/28
RIN: 2.40



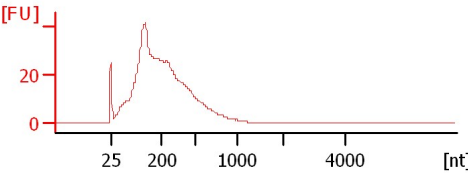
Glob scrape embed 6/29
RIN: 2.10



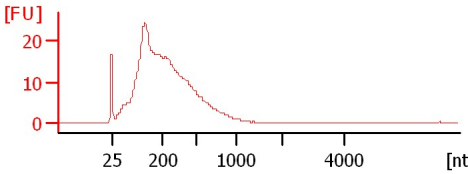
JP1
RIN:1



JP2
RIN: 2.20



JP3
RIN: 2.20



Assay Class: Eukaryote Total RNA Pico
Data Path: C:\...ents and Settings\Bioanalyzer\2012-07-02\2012-07-02_003.xad

Created: 7/2/2012 2:06:28 PM
Modified: 7/2/2012 2:22:23 PM

Electrophoresis File Run Summary (Chip Summary)

Sample Name	Sample Comment	Status	Result Label	Result Color
EM whole seed control		✓	RIN:10	
Glob scrape embed 6/28		✓	RIN: 2.40	
Glob scrape embed 6/29		✓	RIN: 2.10	
JP1		✓	RIN:1	
JP2		✓	RIN: 2.20	
JP3		✓	RIN: 2.20	
Sample 7				
Sample 9				
Sample 10				
Sample 11				
Ladder		✓	All Other Samples	

Chip Lot #

Reagent Kit Lot #

Chip Comments :

Assay Class: Eukaryote Total RNA Pico
Data Path: C:\...ents and Settings\Bioanalyzer\2012-07-02\2012-07-02_003.xad

Created: 7/2/2012 2:06:28 PM
Modified: 7/2/2012 2:22:23 PM

Electrophoresis Assay Details

General Analysis Settings

Number of Available Sample and Ladder Wells (Max.) : 12
Minimum Visible Range [s] : 17
Maximum Visible Range [s] : 70
Start Analysis Time Range [s] : 18
End Analysis Time Range [s] : 69
Ladder Concentration [pg/ μ l] : 1000
Lower Marker Concentration [pg/ μ l] : 0
Upper Marker Concentration [pg/ μ l] : 0
Used Lower Marker for Quantitation
Standard Curve Fit is Logarithmic
Show Data Aligned to Lower Marker

Integrator Settings

Integration Start Time [s] : 18
Integration End Time [s] : 69
Slope Threshold : 0.6
Height Threshold [FU] : 0.5
Area Threshold : 0.2
Width Threshold [s] : 0.3
Baseline Plateau [s] : 6

Filter Settings

Filter Width [s] : 0.5
Polynomial Order : 4

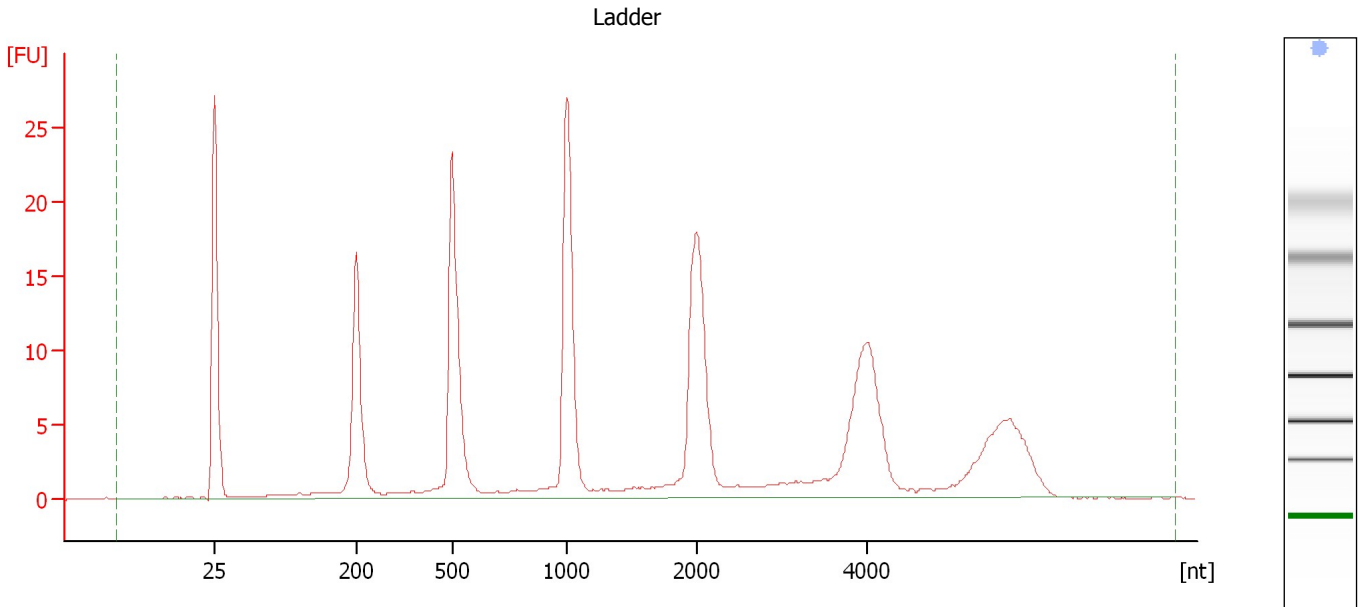
Ladder

Ladder Peak	Size
1	25
2	200
3	500
4	1000
5	2000
6	4000

Assay Class: Eukaryote Total RNA Pico
Data Path: C:\...ents and Settings\Bioanalyzer\2012-07-02\2012-07-02_003.xad

Created: 7/2/2012 2:06:28 PM
Modified: 7/2/2012 2:22:23 PM

Electropherogram Summary



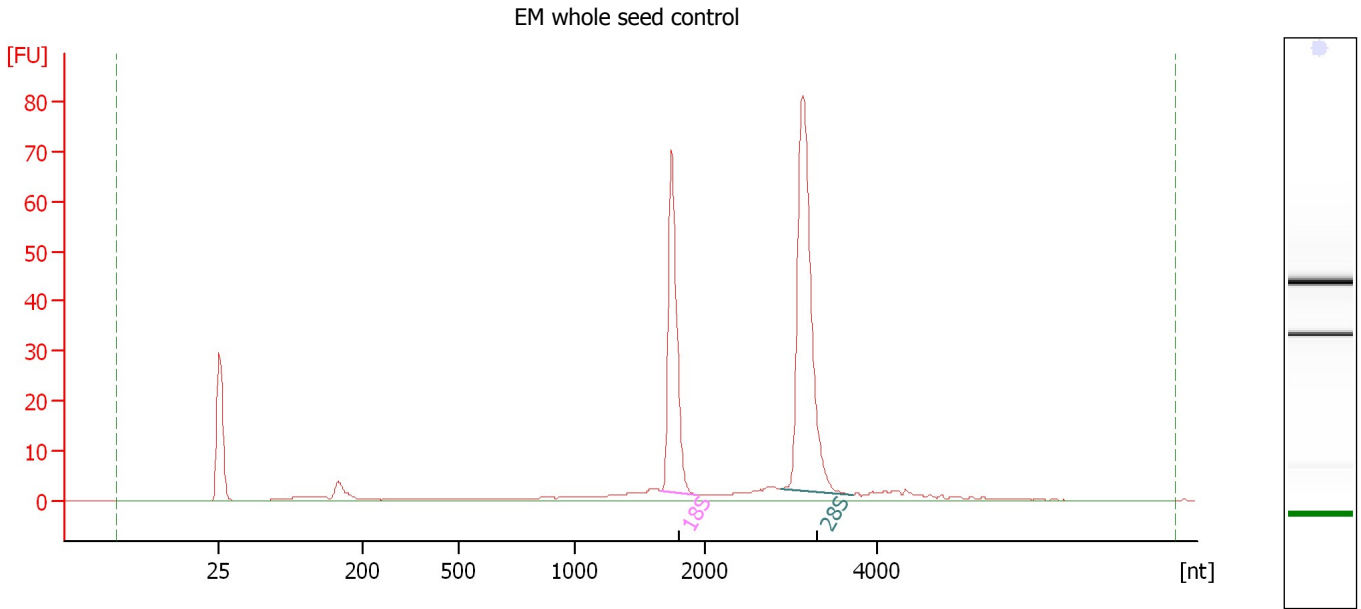
Overall Results for Ladder

RNA Area:	211.3	Result Flagging Color:	
RNA Concentration:	1,000 pg/μl	Result Flagging Label:	All Other Samples

Assay Class: Eukaryote Total RNA Pico
Data Path: C:\...ents and Settings\Bioanalyzer\2012-07-02\2012-07-02_003.xad

Created: 7/2/2012 2:06:28 PM
Modified: 7/2/2012 2:22:23 PM

Electropherogram Summary Continued ...



Overall Results for sample 1 : EM whole seed control

RNA Area: 261.5 RNA Integrity Number (RIN): 10 (B.02.08)
RNA Concentration: 1,238 pg/μl Result Flagging Color:
rRNA Ratio [28s / 18s]: 1.6 Result Flagging Label: RIN:10

Fragment table for sample 1 : EM whole seed control

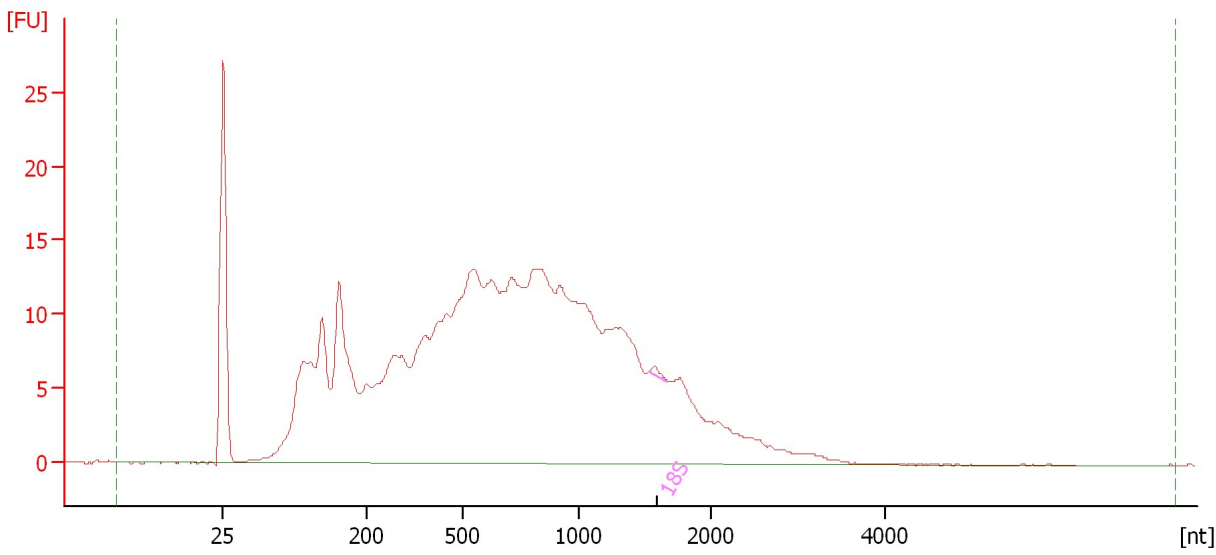
Name	Start Size [nt]	End Size [nt]	Area	% of total Area
18S	1,666	1,936	68.7	26.3
28S	2,895	3,714	111.4	42.6

Assay Class: Eukaryote Total RNA Pico
Data Path: C:\...ents and Settings\Bioanalyzer\2012-07-02\2012-07-02_003.xad

Created: 7/2/2012 2:06:28 PM
Modified: 7/2/2012 2:22:23 PM

Electropherogram Summary Continued ...

Glob scrape embed 6/28



Overall Results for sample 2 : Glob scrape embed 6/28

RNA Area:	480.1	RNA Integrity Number (RIN):	2.4 (B.02.08)
RNA Concentration:	2,272 pg/μl	Result Flagging Color:	
rRNA Ratio [28s / 18s]:	0.0	Result Flagging Label:	RIN: 2.40

Fragment table for sample 2 : Glob scrape embed 6/28

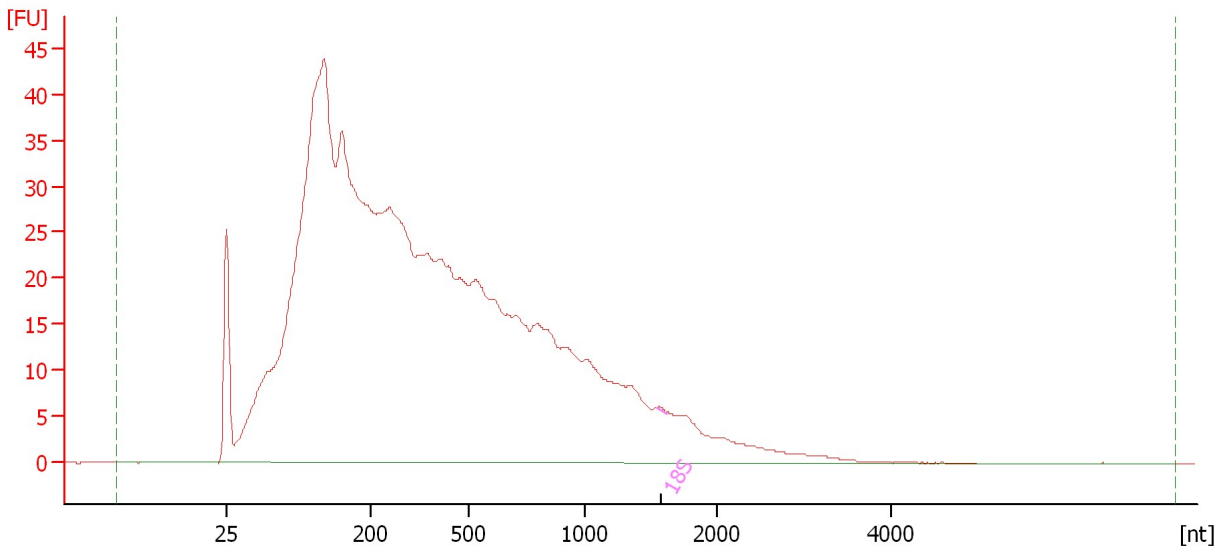
Name	Start Size [nt]	End Size [nt]	Area	% of total Area
18S	1,523	1,669	0.6	0.1

Assay Class: Eukaryote Total RNA Pico
Data Path: C:\...ents and Settings\Bioanalyzer\2012-07-02\2012-07-02_003.xad

Created: 7/2/2012 2:06:28 PM
Modified: 7/2/2012 2:22:23 PM

Electropherogram Summary Continued ...

Glob scrape embed 6/29



Overall Results for sample 3 : Glob scrape embed 6/29

RNA Area:	1,140.6	RNA Integrity Number (RIN):	2.1 (B.02.08)
RNA Concentration:	5,399 pg/μl	Result Flagging Color:	
rRNA Ratio [28s / 18s]:	0.0	Result Flagging Label:	RIN: 2.10

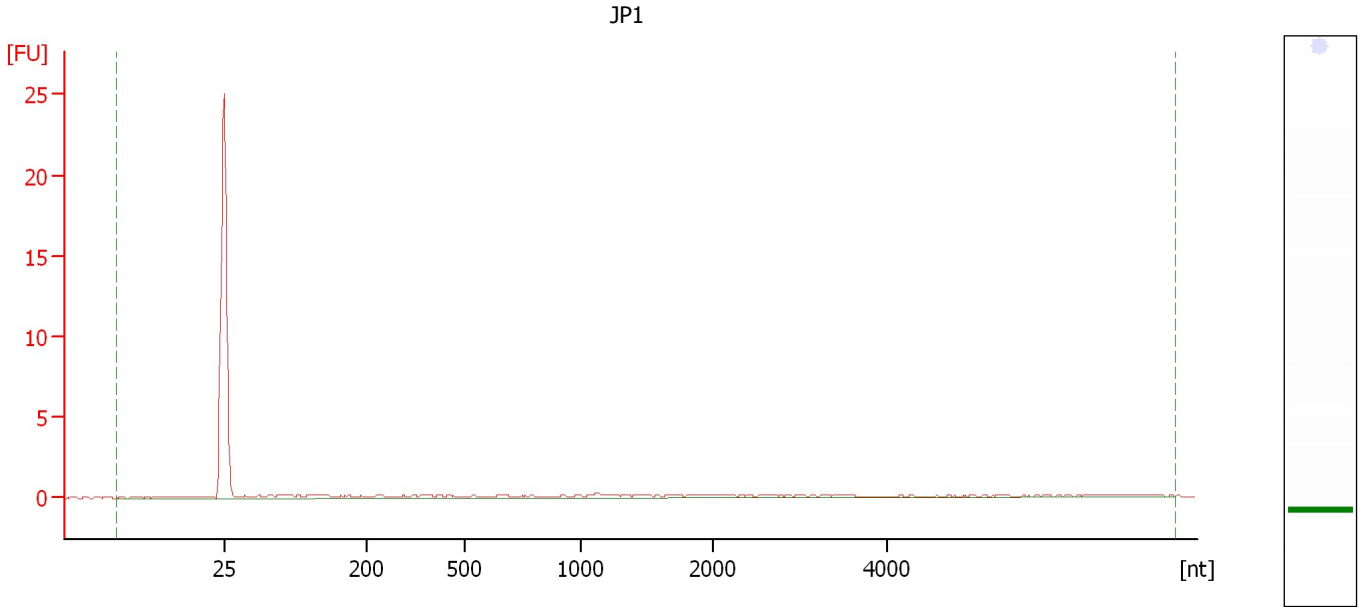
Fragment table for sample 3 : Glob scrape embed 6/29

Name	Start Size [nt]	End Size [nt]	Area	% of total Area
18S	1,543	1,616	0.2	0.0

Assay Class: Eukaryote Total RNA Pico
Data Path: C:\...ents and Settings\Bioanalyzer\2012-07-02\2012-07-02_003.xad

Created: 7/2/2012 2:06:28 PM
Modified: 7/2/2012 2:22:23 PM

Electropherogram Summary Continued ...



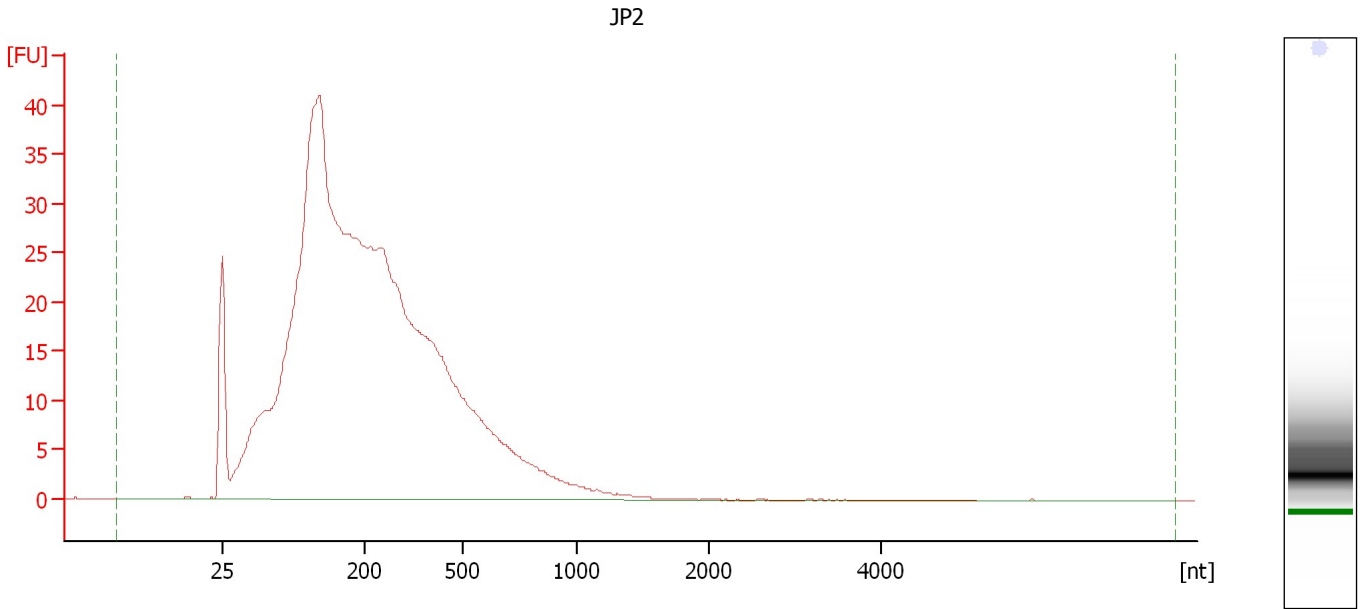
Overall Results for sample 4 : JP1

RNA Area:	9.2	RNA Integrity Number (RIN):	1 (B.02.08)
RNA Concentration:	44 pg/μl	Result Flagging Color:	
rRNA Ratio [28s / 18s]:	0.0	Result Flagging Label:	RIN:1

Assay Class: Eukaryote Total RNA Pico
Data Path: C:\...ents and Settings\Bioanalyzer\2012-07-02\2012-07-02_003.xad

Created: 7/2/2012 2:06:28 PM
Modified: 7/2/2012 2:22:23 PM

Electropherogram Summary Continued ...



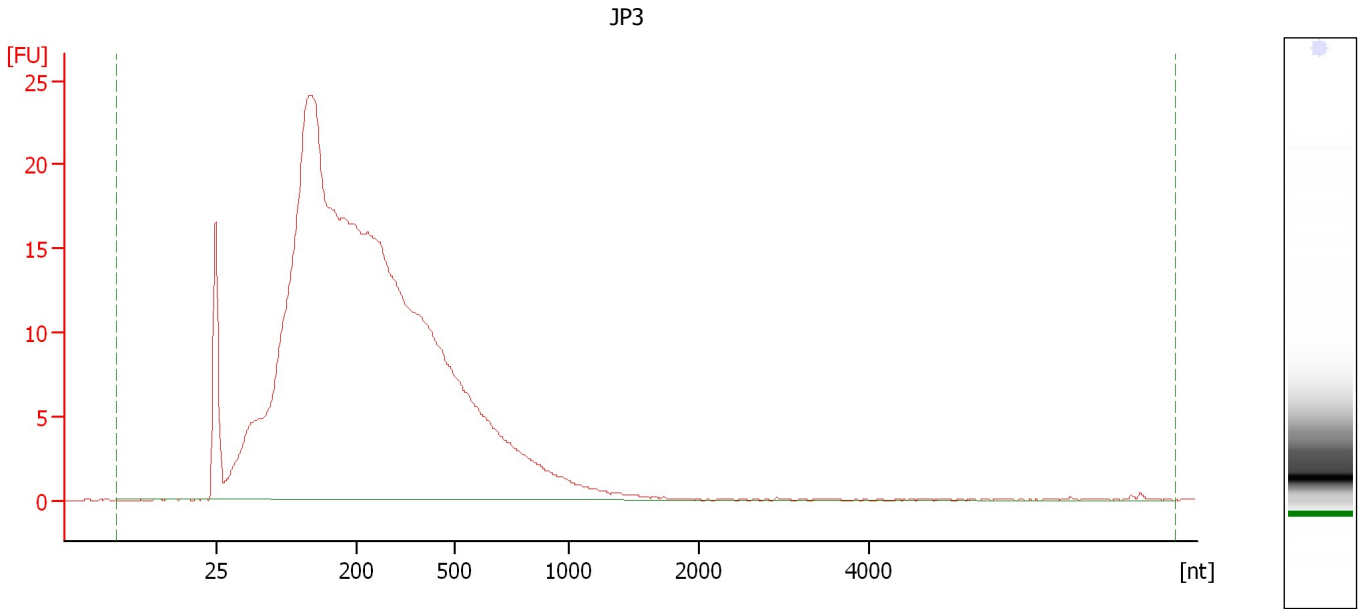
Overall Results for sample 5 : JP2

RNA Area:	769.9	RNA Integrity Number (RIN):	2.2 (B.02.08)
RNA Concentration:	3,644 pg/ μ l	Result Flagging Color:	
rRNA Ratio [28s / 18s]:	0.0	Result Flagging Label:	RIN: 2.20

Assay Class: Eukaryote Total RNA Pico
Data Path: C:\...ents and Settings\Bioanalyzer\2012-07-02\2012-07-02_003.xad

Created: 7/2/2012 2:06:28 PM
Modified: 7/2/2012 2:22:23 PM

Electropherogram Summary Continued ...



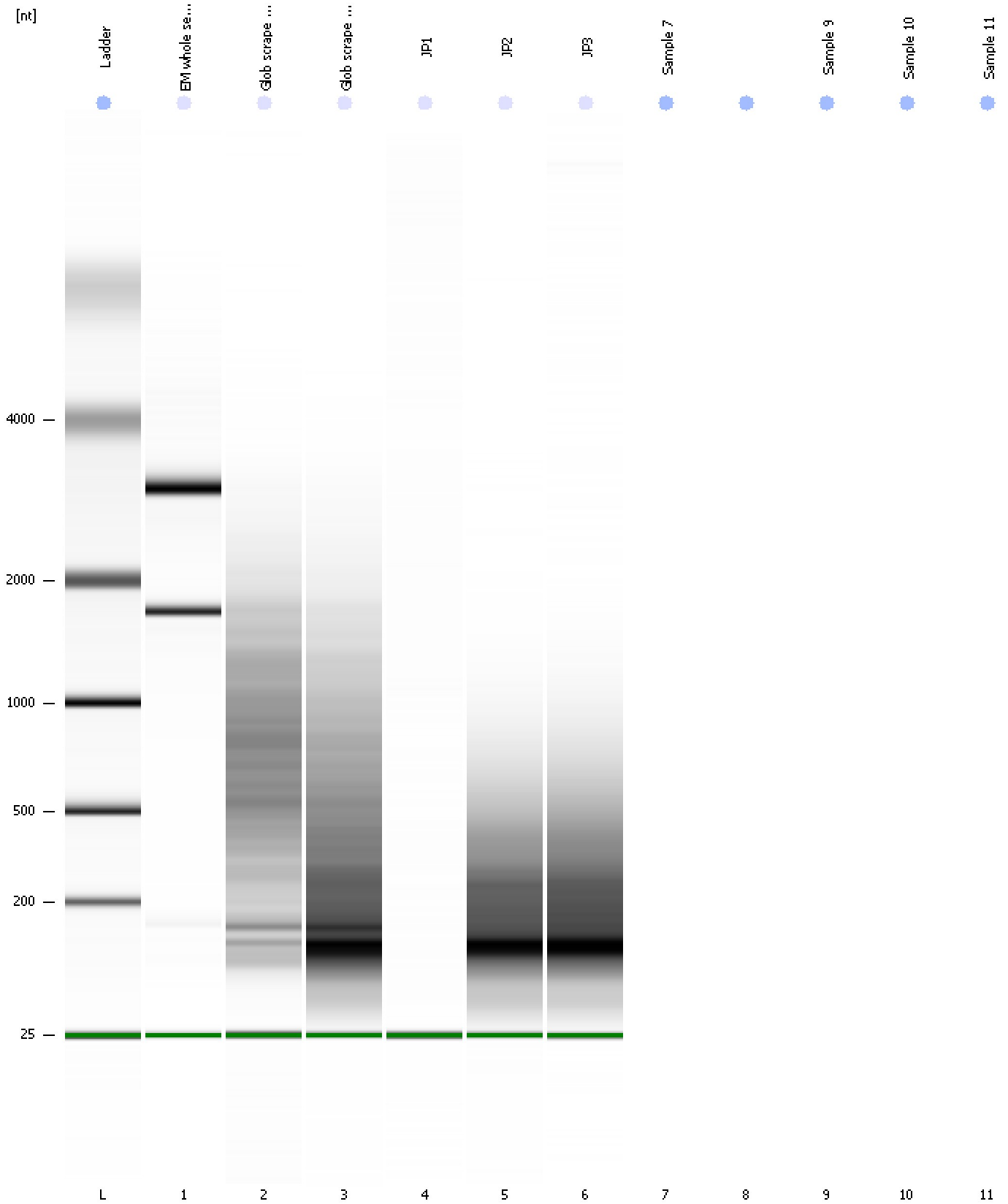
Overall Results for sample 6 : JP3

RNA Area:	491.1	RNA Integrity Number (RIN):	2.2 (B.02.08)
RNA Concentration:	2,324 pg/μl	Result Flagging Color:	
rRNA Ratio [28s / 18s]:	0.0	Result Flagging Label:	RIN: 2.20

Assay Class: Eukaryote Total RNA Pico
Data Path: C:\...ents and Settings\Bioanalyzer\2012-07-02\2012-07-02_003.xad

Created: 7/2/2012 2:06:28 PM
Modified: 7/2/2012 2:22:23 PM

Gel Image



Assay Class: Eukaryote Total RNA Pico
Data Path: C:\...ents and Settings\Bioanalyzer\2012-07-02\2012-07-02_003.xad

Created: 7/2/2012 2:06:28 PM
Modified: 7/2/2012 2:22:23 PM

Invalid Samples

Sample 7 has not been run, no results available.

Sample 8 has not been run, no results available.

Sample 9 has not been run, no results available.

Sample 10 has not been run, no results available.

Sample 11 has not been run, no results available.

Assay Class: Eukaryote Total RNA Pico
 Data Path: C:\...ents and Settings\Bioanalyzer\2012-07-02\2012-07-02_003.xad

Created: 7/2/2012 2:06:28 PM
 Modified: 7/2/2012 2:22:23 PM

Run Logbook

Description	Number	Source	Category	Sub Category	Time	Time Zone	User	Host
Run ended on port 1 (Number of wells acquired: 7)		Instrument	Run		7/2/2012 2:22:13 PM	(GMT --07:00) Pacific Standard Time	UC Davis	D8XSMGH1
Run started on port 1 (File: C:\Documents and Settings\Bioanalyzer\2012-07-02\2012-07-02_003.xad)		Instrument	Run		7/2/2012 2:06:34 PM	(GMT --07:00) Pacific Standard Time	UC Davis	D8XSMGH1
Product Number : G2938B		Instrument	Run		7/2/2012 2:06:34 PM	(GMT --07:00) Pacific Standard Time	UC Davis	D8XSMGH1
Name :		Instrument	Run		7/2/2012 2:06:34 PM	(GMT --07:00) Pacific Standard Time	UC Davis	D8XSMGH1
Vendor : Agilent Technologies		Instrument	Run		7/2/2012 2:06:34 PM	(GMT --07:00) Pacific Standard Time	UC Davis	D8XSMGH1
Serial# : DE13701086		Instrument	Run		7/2/2012 2:06:34 PM	(GMT --07:00) Pacific Standard Time	UC Davis	D8XSMGH1
Firmware : C.01.069		Instrument	Run		7/2/2012 2:06:34 PM	(GMT --07:00) Pacific Standard Time	UC Davis	D8XSMGH1
Cartridge : Electrode		Instrument	Run		7/2/2012 2:06:34 PM	(GMT --07:00) Pacific Standard Time	UC Davis	D8XSMGH1