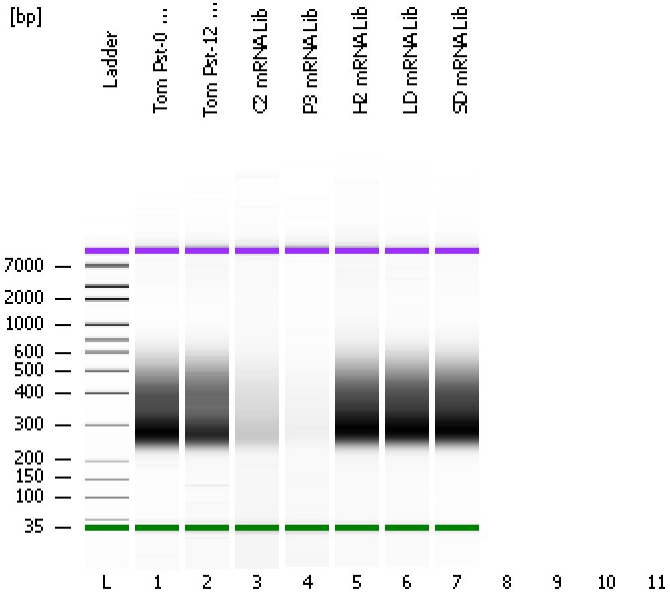


Assay Class: High Sensitivity DNA Assay
Data Path: C:\...ents and Settings\Bioanalyzer\2012-07-02\2012-07-02_004.xad

Created: 7/2/2012 3:48:20 PM
Modified: 7/2/2012 4:28:31 PM

Electrophoresis File Run Summary



Instrument Information:

Instrument Name: DE13701086 Firmware: C.01.069
Serial#: DE13701086 Type: G2938B

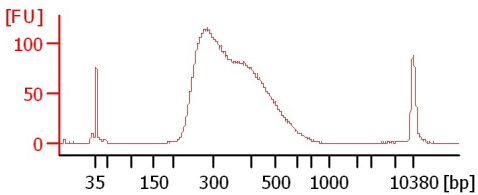
Assay Information:

Assay Origin Path: C:\Program Files\Agilent\2100 bioanalyzer\2100 expert\assays\dsDNA\High Sensitivity DNA.xsy
Assay Class: High Sensitivity DNA Assay
Version: 1.03
Assay Comments: Copyright © 2003-2010 Agilent Technologies

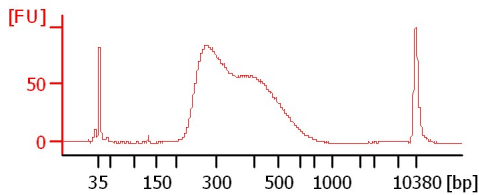
Chip Information:

Chip Lot #: Reagent Kit Lot #: Chip Comments:

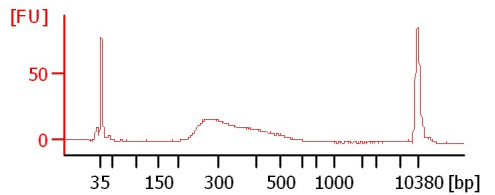
Tom Pst-0 mRNA Lib



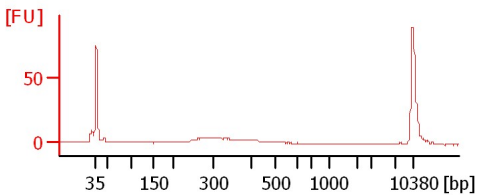
Tom Pst-12 mRNA Lib



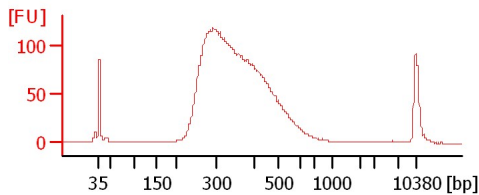
C2 mRNA Lib



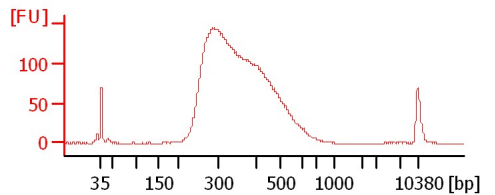
P3 mRNA Lib



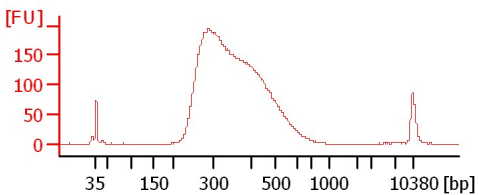
H2 mRNA Lib



LD mRNA Lib



SD mRNA Lib



Assay Class: High Sensitivity DNA Assay
 Data Path: C:\...ents and Settings\Bioanalyzer\2012-07-02\2012-07-02_004.xad

Created: 7/2/2012 3:48:20 PM
 Modified: 7/2/2012 4:28:31 PM

Electrophoresis File Run Summary (Chip Summary)

Sample Name	Sample Comment	Rest. Digest	Status	Observation	Result Label	Result Color
Tom Pst-0 mRNA Lib		<input type="checkbox"/>	✓			
Tom Pst-12 mRNA Lib		<input type="checkbox"/>	✓			
C2 mRNA Lib		<input type="checkbox"/>	✓			
P3 mRNA Lib		<input type="checkbox"/>	✓			
H2 mRNA Lib		<input type="checkbox"/>	✓			
LD mRNA Lib		<input type="checkbox"/>	✓			
SD mRNA Lib		<input type="checkbox"/>	✓			
		<input type="checkbox"/>				
		<input type="checkbox"/>				
		<input type="checkbox"/>				
Ladder		<input type="checkbox"/>	✓			

Chip Lot #

Reagent Kit Lot #

Chip Comments :

Assay Class: High Sensitivity DNA Assay
Data Path: C:\...ents and Settings\Bioanalyzer\2012-07-02\2012-07-02_004.xad

Created: 7/2/2012 3:48:20 PM
Modified: 7/2/2012 4:28:31 PM

Electrophoresis Assay Details

General Analysis Settings

Number of Available Sample and Ladder Wells (Max.) : 12
Minimum Visible Range [s] : 32
Maximum Visible Range [s] : 138
Start Analysis Time Range [s] : 33
End Analysis Time Range [s] : 137.5
Ladder Concentration [pg/ μ l] : 1950
Uses Standard Area for Ladder Fragments
Lower Marker Concentration [pg/ μ l] : 125
Upper Marker Concentration [pg/ μ l] : 75
Used Upper Marker for Quantitation
Standard Curve Fit is Point to Point
Show Data Aligned to Lower and Upper Marker

Integrator Settings

Integration Start Time [s] : 33.05
Integration End Time [s] : 137
Slope Threshold : 0.8
Height Threshold [FU] : 5
Area Threshold : 0.1
Width Threshold [s] : 0.6
Baseline Plateau [s] : 0.5

Filter Settings

Filter Width [s] : 0.5
Polynomial Order : 4

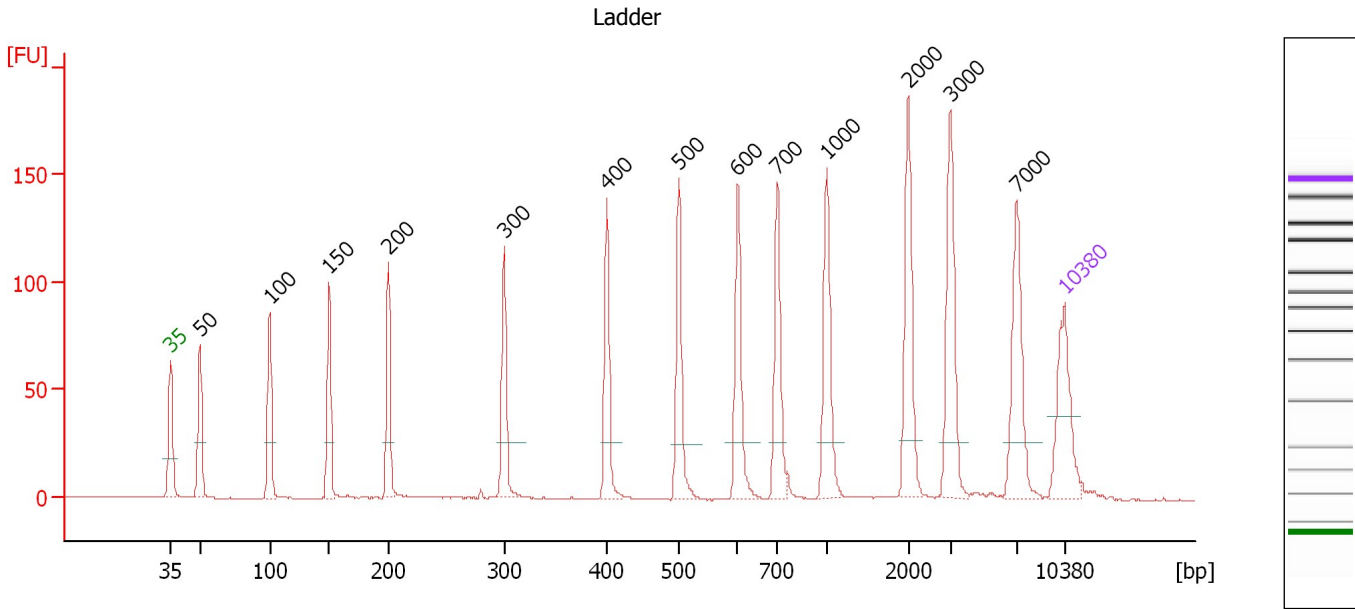
Ladder

Ladder Peak	Size	Area
1	35	160
2	50	210
3	100	208
4	150	221
5	200	242
6	300	270
7	400	305
8	500	306
9	600	336
10	700	321
11	1000	366
12	2000	413
13	3000	411
14	7000	400
15	10380	214

Assay Class: High Sensitivity DNA Assay
 Data Path: C:\...ents and Settings\Bioanalyzer\2012-07-02\2012-07-02_004.xad

Created: 7/2/2012 3:48:20 PM
 Modified: 7/2/2012 4:28:31 PM

Electropherogram Summary



Overall Results for Ladder

Noise: 0.1

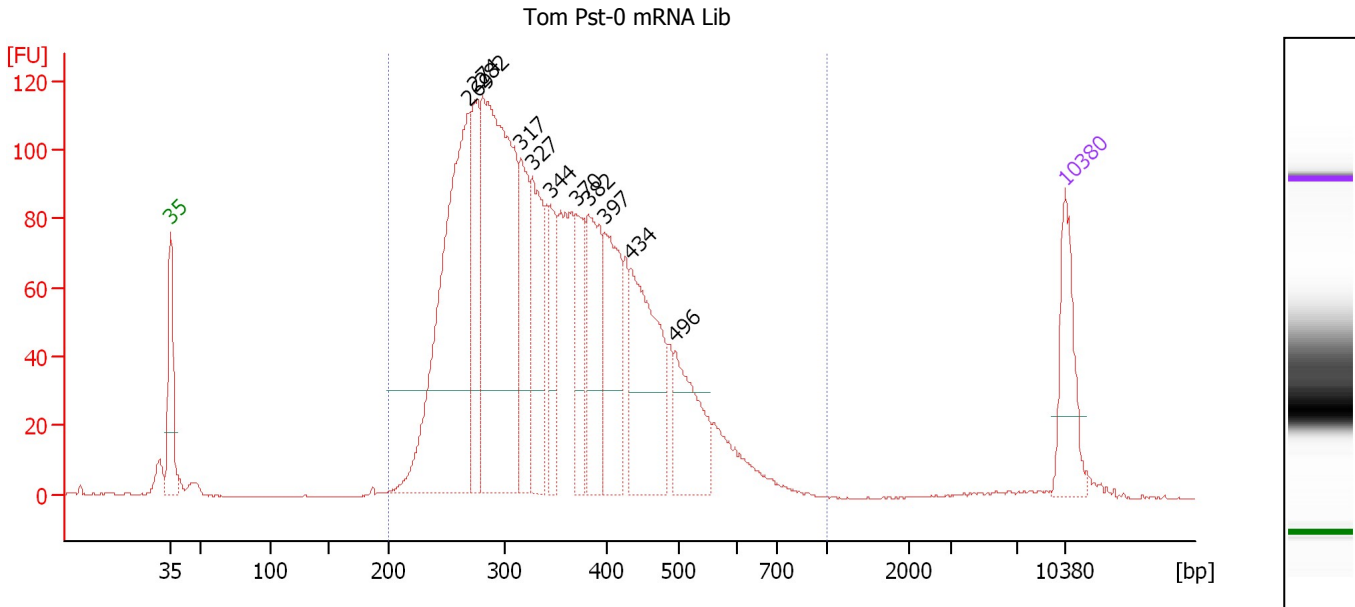
Peak table for Ladder

Peak	Size [bp]	Conc. [pg/μl]	Molarity [pmol/l]	Observations
1	35	125.00	5,411.3	Lower Marker
2	50	150.00	4,545.5	Ladder Peak
3	100	150.00	2,272.7	Ladder Peak
4	150	150.00	1,515.2	Ladder Peak
5	200	150.00	1,136.4	Ladder Peak
6	300	150.00	757.6	Ladder Peak
7	400	150.00	568.2	Ladder Peak
8	500	150.00	454.5	Ladder Peak
9	600	150.00	378.8	Ladder Peak
10	700	150.00	324.7	Ladder Peak
11	1,000	150.00	227.3	Ladder Peak
12	2,000	150.00	113.6	Ladder Peak
13	3,000	150.00	75.8	Ladder Peak
14	7,000	150.00	32.5	Ladder Peak
15	10,380	75.00	10.9	Upper Marker

Assay Class: High Sensitivity DNA Assay
 Data Path: C:\...ents and Settings\Bioanalyzer\2012-07-02\2012-07-02_004.xad

Created: 7/2/2012 3:48:20 PM
 Modified: 7/2/2012 4:28:31 PM

Electropherogram Summary Continued ...



Setpoint Deviations for sample 1 : Tom Pst-0 mRNA Lib

Height Threshold [FU] : 30

Overall Results for sample 1 : Tom Pst-0 mRNA Lib

Number of peaks found: 11 Corr. Area 1: 2,557.4
 Noise: 0.2

Peak table for sample 1 : Tom Pst-0 mRNA Lib

Peak	Size [bp]	Conc. [pg/μl]	Molarity [pmol/l]	Observations
1	35	125.00	5,411.3	Lower Marker
2	269	553.37	3,111.4	
3	274	157.58	869.8	
4	282	613.72	3,303.0	
5	317	133.35	638.3	
6	327	174.35	807.1	
7	344	84.86	373.4	
8	370	94.80	388.4	
9	382	159.16	631.8	
10	397	156.22	596.2	
11	434	225.70	788.2	
12	496	120.40	368.1	
13	10,380	75.00	10.9	Upper Marker

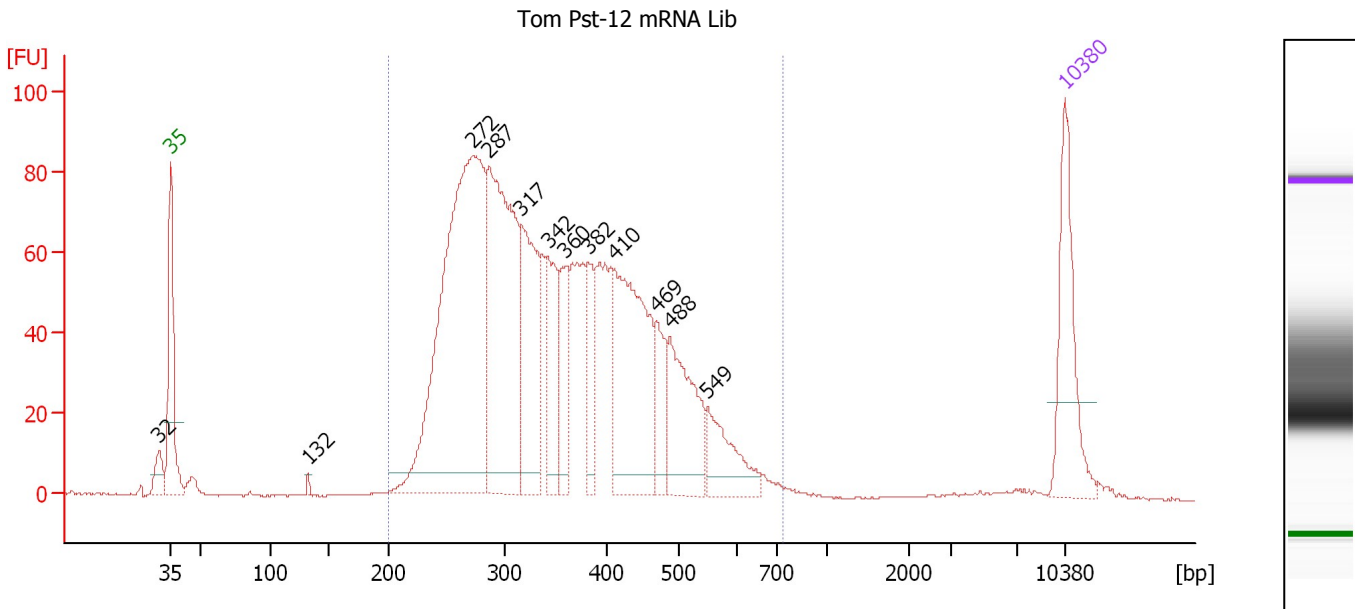
Region table for sample 1 : Tom Pst-0 mRNA Lib

From [bp]	To [bp]	Average Size [bp]	Molarity [pmol/l]	Conc. [pg/μl]	Corr. Area	% of Total	Size distribution in CV [%]	Color
200	1,000	358	13,378.0	2,897.73	2,557.4	97	26.4	Blue

Assay Class: High Sensitivity DNA Assay
 Data Path: C:\...ents and Settings\Bioanalyzer\2012-07-02\2012-07-02_004.xad

Created: 7/2/2012 3:48:20 PM
 Modified: 7/2/2012 4:28:31 PM

Electropherogram Summary Continued ...



Overall Results for sample 2 : Tom Pst-12 mRNA Lib

Number of peaks found: 12 Corr. Area 1: 1,896.2
 Noise: 0.2

Peak table for sample 2 : Tom Pst-12 mRNA Lib

Peak	Size [bp]	Conc. [pg/μl]	Molarity [pmol/l]	Observations
1	32	0.00	0.0	
2	35	125.00	5,411.3	Lower Marker
3	132	3.47	39.9	
4	272	539.09	3,000.5	
5	287	318.67	1,681.7	
6	317	150.27	718.8	
7	342	79.53	352.1	
8	360	60.82	256.2	
9	382	51.61	204.9	
10	410	199.03	735.1	
11	469	47.20	152.4	
12	488	104.90	325.5	
13	549	58.47	161.3	
14	10,380	75.00	10.9	Upper Marker

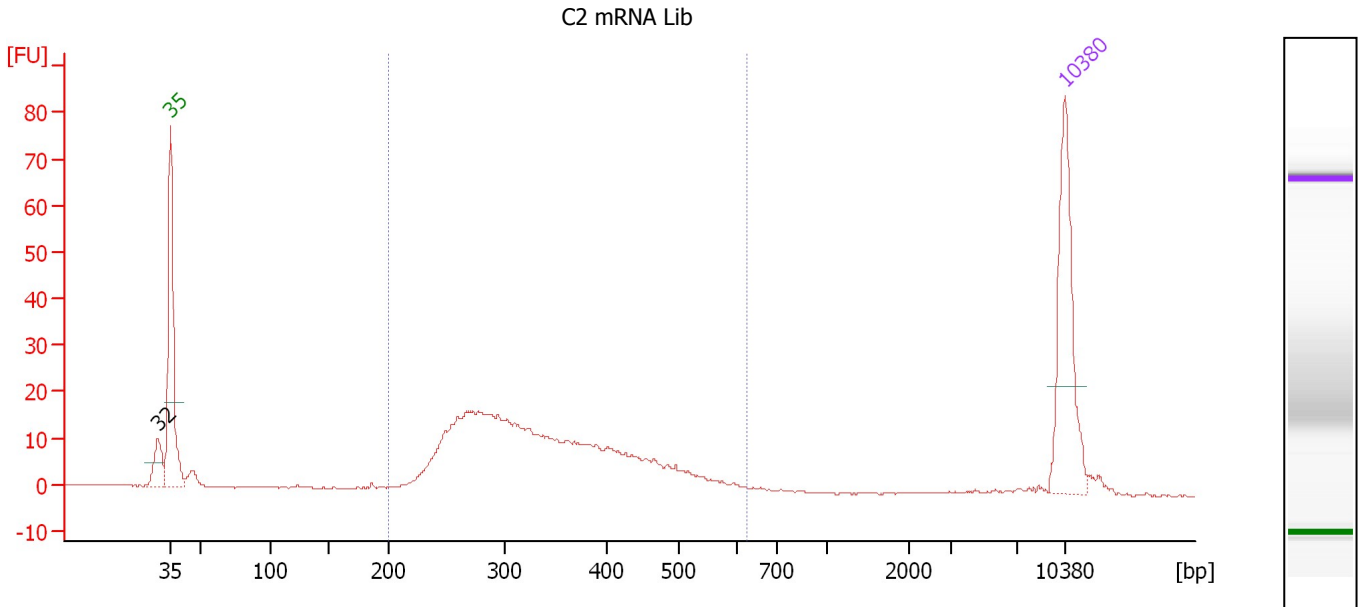
Region table for sample 2 : Tom Pst-12 mRNA Lib

From [bp]	To [bp]	Average Size [bp]	Molarity [pmol/l]	Conc. [pg/μl]	Corr. Area	% of Total	Size distribution in CV [%]	Color
200	735	361	8,683.5	1,891.09	1,896.2	96	26.2	Blue

Assay Class: High Sensitivity DNA Assay
 Data Path: C:\...ents and Settings\Bioanalyzer\2012-07-02\2012-07-02_004.xad

Created: 7/2/2012 3:48:20 PM
 Modified: 7/2/2012 4:28:31 PM

Electropherogram Summary Continued ...



Overall Results for sample 3 : C2 mRNA Lib

Number of peaks found: 1 Corr. Area 1: 328.6
 Noise: 0.2

Peak table for sample 3 : C2 mRNA Lib

Peak	Size [bp]	Conc. [pg/μl]	Molarity [pmol/l]	Observations
1	32	0.00	0.0	
2	35	125.00	5,411.3	Lower Marker
3	10,380	75.00	10.9	Upper Marker

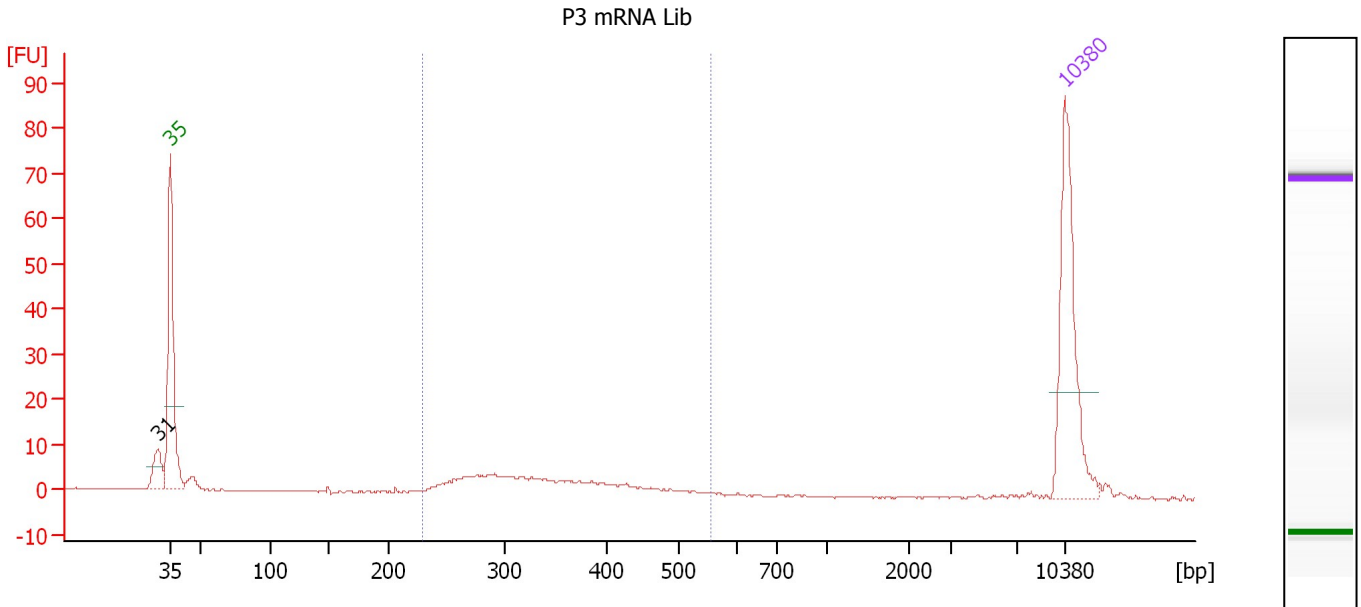
Region table for sample 3 : C2 mRNA Lib

From [bp]	To [bp]	Average Size [bp]	Molarity [pmol/l]	Conc. [pg/μl]	Corr. Area	% of Total	Size distribution in CV [%]	Color
200	621	344	1,867.4	393.79	328.6	89	24.0	Blue

Assay Class: High Sensitivity DNA Assay
 Data Path: C:\...ents and Settings\Bioanalyzer\2012-07-02\2012-07-02_004.xad

Created: 7/2/2012 3:48:20 PM
 Modified: 7/2/2012 4:28:31 PM

Electropherogram Summary Continued ...



Overall Results for sample 4 : P3 mRNA Lib

Number of peaks found: 1 Corr. Area 1: 72.7
 Noise: 0.2

Peak table for sample 4 : P3 mRNA Lib

Peak	Size [bp]	Conc. [pg/μl]	Molarity [pmol/l]	Observations
1	31	0.00	0.0	
2	35	125.00	5,411.3	Lower Marker
3	10,380	75.00	10.9	Upper Marker

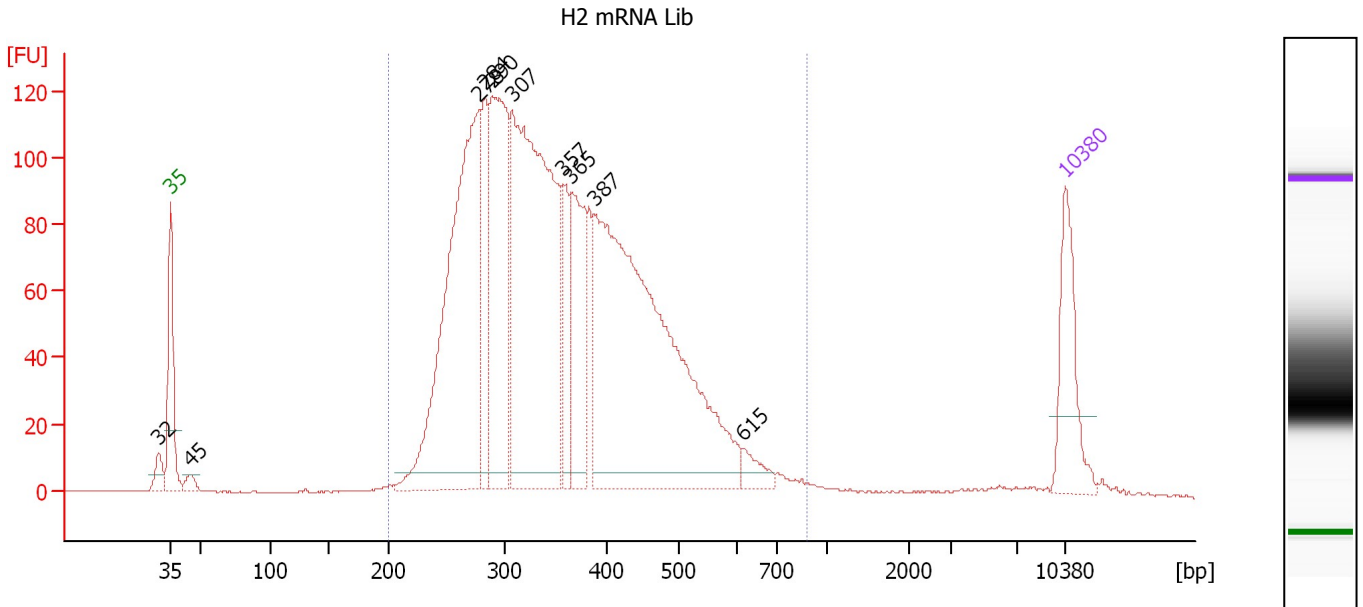
Region table for sample 4 : P3 mRNA Lib

From [bp]	To [bp]	Average Size [bp]	Molarity [pmol/l]	Conc. [pg/μl]	Corr. Area	% of Total	Size distribution in CV [%]	Color
230	555	340	386.2	82.07	72.7	67	20.5	Blue

Assay Class: High Sensitivity DNA Assay
 Data Path: C:\...ents and Settings\Bioanalyzer\2012-07-02\2012-07-02_004.xad

Created: 7/2/2012 3:48:20 PM
 Modified: 7/2/2012 4:28:31 PM

Electropherogram Summary Continued ...



Overall Results for sample 5 : H2 mRNA Lib

Number of peaks found: 10 Corr. Area 1: 2,614.9
 Noise: 0.2

Peak table for sample 5 : H2 mRNA Lib

Peak	Size [bp]	Conc. [pg/μl]	Molarity [pmol/l]	Observations
1	32	0.00	0.0	
2	35	125.00	5,411.3	Lower Marker
3	45	13.89	464.5	
4	278	531.24	2,893.5	
5	284	119.65	639.2	
6	290	300.55	1,572.6	
7	307	612.43	3,020.6	
8	357	78.19	331.5	
9	365	141.61	588.3	
10	387	702.72	2,748.5	
11	615	20.53	50.6	
12	10,380	75.00	10.9	Upper Marker

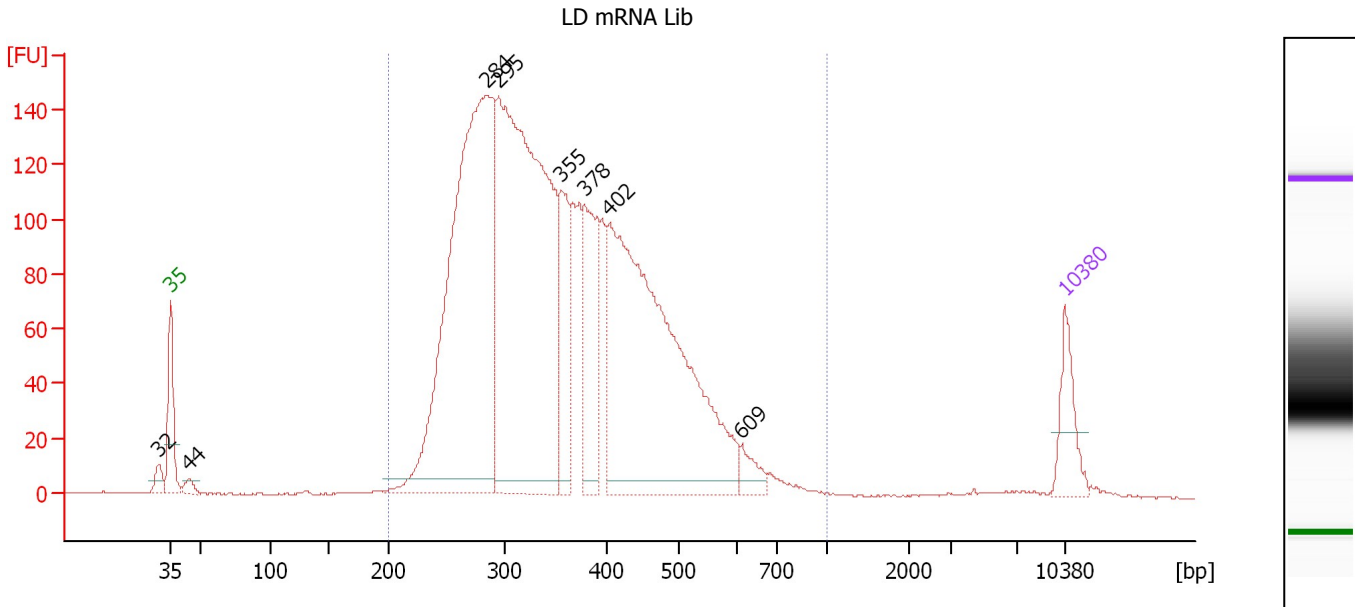
Region table for sample 5 : H2 mRNA Lib

From [bp]	To [bp]	Average Size [bp]	Molarity [pmol/l]	Conc. [pg/μl]	Corr. Area	% of Total	Size distribution in CV [%]	Color
200	875	364	11,793.1	2,600.97	2,614.9	97	26.3	Blue

Assay Class: High Sensitivity DNA Assay
 Data Path: C:\...ents and Settings\Bioanalyzer\2012-07-02\2012-07-02_004.xad

Created: 7/2/2012 3:48:20 PM
 Modified: 7/2/2012 4:28:31 PM

Electropherogram Summary Continued ...



Overall Results for sample 6 : LD mRNA Lib

Number of peaks found: 8 Corr. Area 1: 3,192.0
 Noise: 0.2

Peak table for sample 6 : LD mRNA Lib

Peak	Size [bp]	Conc. [pg/μl]	Molarity [pmol/l]	Observations
1	32	0.00	0.0	
2	35	125.00	5,411.3	Lower Marker
3	44	22.80	783.2	
4	284	1,410.38	7,526.6	
5	295	1,492.59	7,669.5	
6	355	211.27	900.8	
7	378	248.57	995.8	
8	402	1,123.81	4,231.3	
9	609	40.40	100.5	
10	10,380	75.00	10.9	Upper Marker

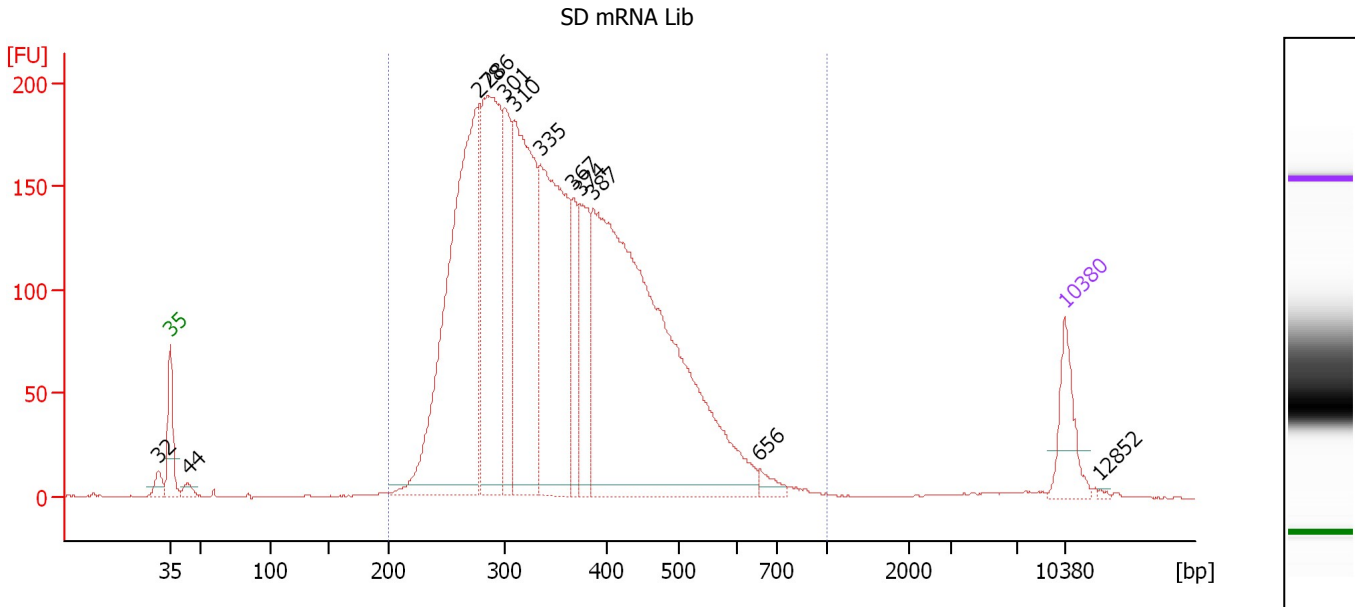
Region table for sample 6 : LD mRNA Lib

From [bp]	To [bp]	Average Size [bp]	Molarity [pmol/l]	Conc. [pg/μl]	Corr. Area	% of Total	Size distribution in CV [%]	Color
200	1,000	365	21,785.5	4,817.07	3,192.0	98	26.5	Blue

Assay Class: High Sensitivity DNA Assay
 Data Path: C:\...ents and Settings\Bioanalyzer\2012-07-02\2012-07-02_004.xad

Created: 7/2/2012 3:48:20 PM
 Modified: 7/2/2012 4:28:31 PM

Electropherogram Summary Continued ...



Overall Results for sample 7 : SD mRNA Lib

Number of peaks found: 12 Corr. Area 1: 4,218.4
 Noise: 0.2

Peak table for sample 7 : SD mRNA Lib

Peak	Size [bp]	Conc. [pg/μl]	Molarity [pmol/l]	Observations
1	32	0.00	0.0	
2	35	125.00	5,411.3	Lower Marker
3	44	18.82	649.9	
4	278	974.02	5,312.3	
5	286	625.71	3,313.7	
6	301	244.06	1,230.4	
7	310	601.07	2,938.8	
8	335	598.54	2,703.3	
9	367	139.28	574.6	
10	374	186.05	754.7	
11	387	1,408.98	5,521.6	
12	656	21.38	49.4	
13	10,380	75.00	10.9	Upper Marker
14	12,852	0.00	0.0	

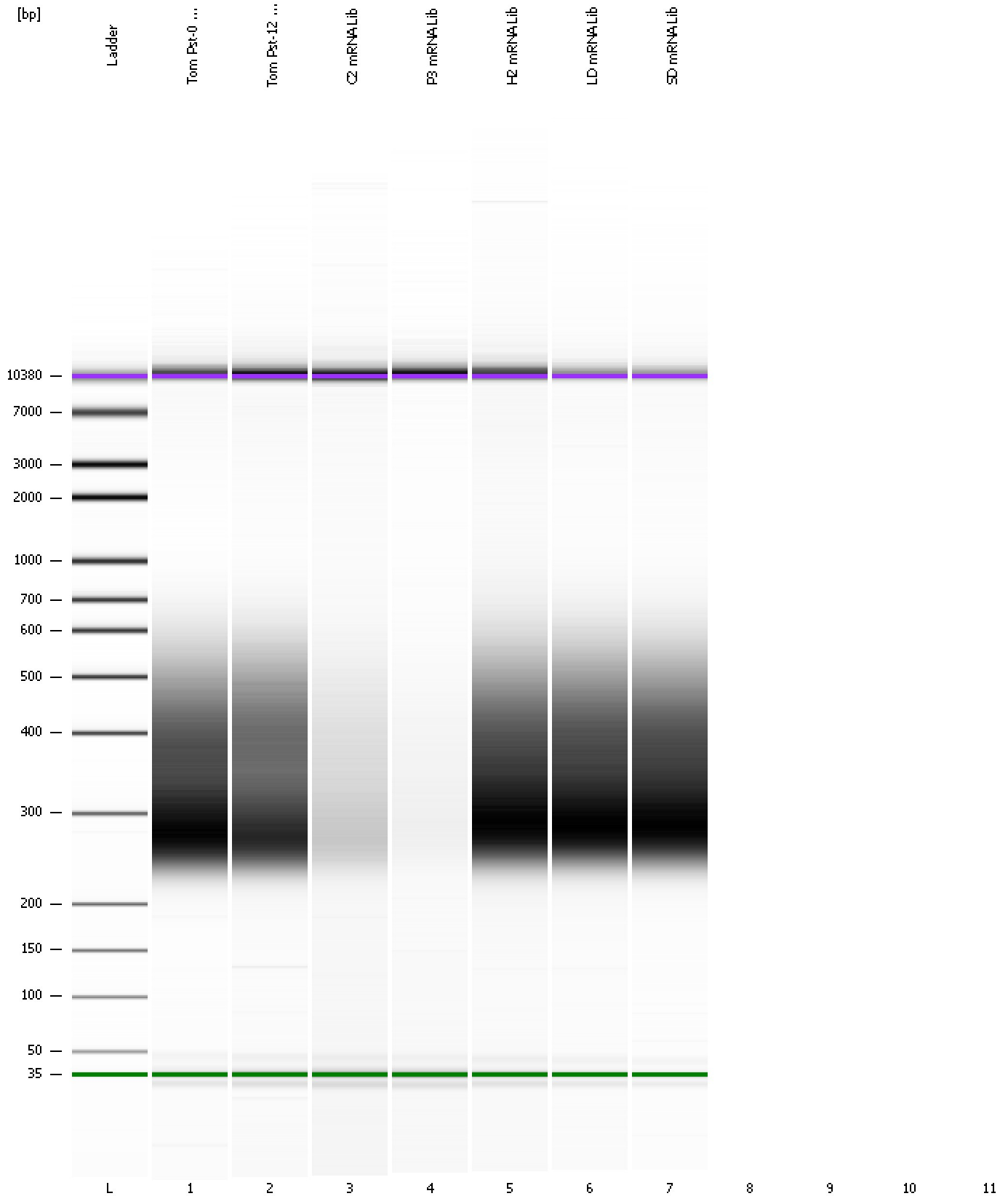
Region table for sample 7 : SD mRNA Lib

From [bp]	To [bp]	Average Size [bp]	Molarity [pmol/l]	Conc. [pg/μl]	Corr. Area	% of Total	Size distribution in CV [%]	Color
200	1,000	364	21,639.8	4,778.67	4,218.4	98	26.4	Blue

Assay Class: High Sensitivity DNA Assay
Data Path: C:\...ents and Settings\Bioanalyzer\2012-07-02\2012-07-02_004.xad

Created: 7/2/2012 3:48:20 PM
Modified: 7/2/2012 4:28:31 PM

Gel Image



Assay Class: High Sensitivity DNA Assay
Data Path: C:\...ents and Settings\Bioanalyzer\2012-07-02\2012-07-02_004.xad

Created: 7/2/2012 3:48:20 PM
Modified: 7/2/2012 4:28:31 PM

Invalid Samples

Sample 8 has not been run, no results available.

Sample 9 has not been run, no results available.

Sample 10 has not been run, no results available.

Sample 11 has not been run, no results available.

Assay Class: High Sensitivity DNA Assay
 Data Path: C:\...ents and Settings\Bioanalyzer\2012-07-02\2012-07-02_004.xad

Created: 7/2/2012 3:48:20 PM
 Modified: 7/2/2012 4:28:31 PM

Run Logbook

Description	Number	Source	Category	Sub Category	Time	Time Zone	User	Host
Run ended on port 1 (Number of wells acquired: 8)		Instrument	Run		7/2/2012 4:18:12 PM	(GMT --07:00) Pacific Standard Time	UC Davis	D8XSMGH1
Run started on port 1 (File: C:\Documents and Settings\Bioanalyzer\2012-07-02\2012-07-02_004.xad)		Instrument	Run		7/2/2012 3:48:26 PM	(GMT --07:00) Pacific Standard Time	UC Davis	D8XSMGH1
Product Number : G2938B		Instrument	Run		7/2/2012 3:48:26 PM	(GMT --07:00) Pacific Standard Time	UC Davis	D8XSMGH1
Name :		Instrument	Run		7/2/2012 3:48:26 PM	(GMT --07:00) Pacific Standard Time	UC Davis	D8XSMGH1
Vendor : Agilent Technologies		Instrument	Run		7/2/2012 3:48:26 PM	(GMT --07:00) Pacific Standard Time	UC Davis	D8XSMGH1
Serial# : DE13701086		Instrument	Run		7/2/2012 3:48:26 PM	(GMT --07:00) Pacific Standard Time	UC Davis	D8XSMGH1
Firmware : C.01.069		Instrument	Run		7/2/2012 3:48:26 PM	(GMT --07:00) Pacific Standard Time	UC Davis	D8XSMGH1
Cartridge : Electrode		Instrument	Run		7/2/2012 3:48:26 PM	(GMT --07:00) Pacific Standard Time	UC Davis	D8XSMGH1