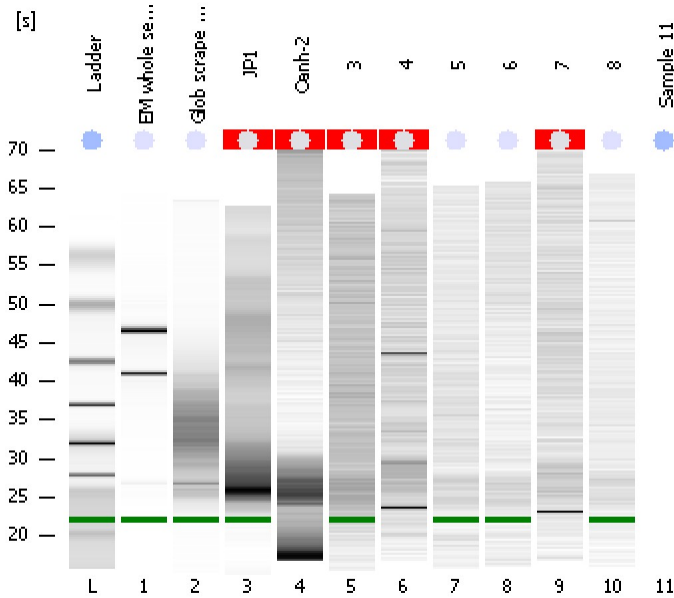


Assay Class: Eukaryote Total RNA Pico  
Data Path: C:\...ents and Settings\Bioanalyzer\2012-07-03\2012-07-03\_002.xad

Created: 7/3/2012 10:36:13 AM  
Modified: 7/3/2012 11:04:02 AM

Electrophoresis File Run Summary



Instrument Information:

Instrument Name: DE13701086      Firmware: C.01.069  
Serial#: DE13701086      Type: G2938B

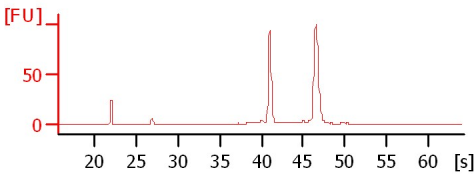
Assay Information:

Assay Origin Path: C:\Program Files\Agilent\2100 bioanalyzer\2100 expert\assays\RNA\Eukaryote Total RNA Pico Series II.xsy  
Assay Class: Eukaryote Total RNA Pico  
Version: 2.6  
Assay Comments: Total RNA Analysis pg sensitivity (Eukaryote)  
© Copyright 2003 - 2009 Agilent Technologies, Inc.

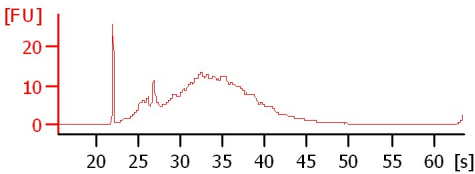
Chip Information:

Chip Lot #:   
Reagent Kit Lot #:   
Chip Comments:

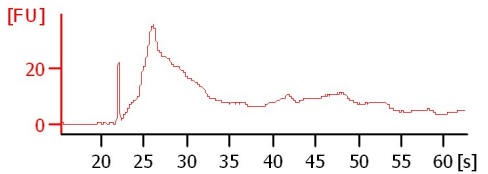
**EM whole seed control**  
RIN: 9.70



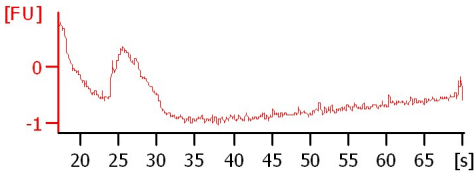
**Glob scrape embed 6/29**  
RIN: 2.30



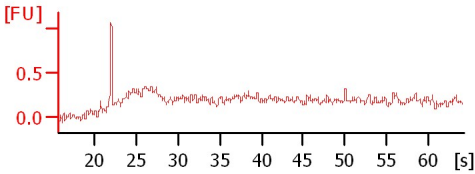
**JP1**  
RIN N/A



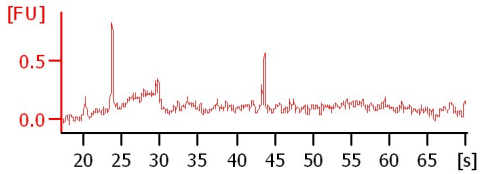
**Oanh-2**  
RIN N/A



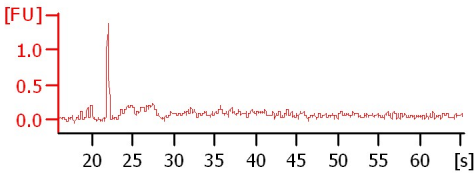
**3**  
RIN N/A



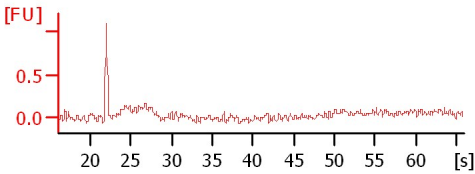
**4**  
RIN N/A



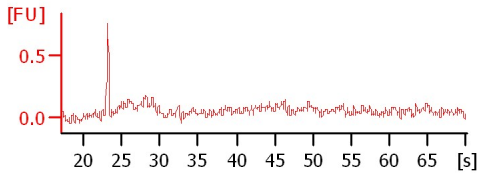
**5**  
RIN: 1.60



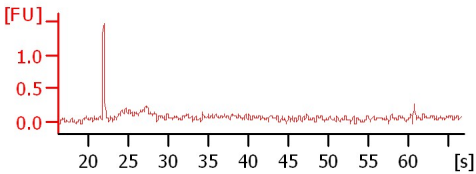
**6**  
RIN: 1.50



**7**  
RIN N/A



**8**  
RIN: 1.60



Assay Class: Eukaryote Total RNA Pico  
Data Path: C:\...ents and Settings\Bioanalyzer\2012-07-03\2012-07-03\_002.xad

Created: 7/3/2012 10:36:13 AM  
Modified: 7/3/2012 11:04:02 AM

**Electrophoresis File Run Summary (Chip Summary)**

Sample Name	Sample Comment	Status	Result Label	Result Color
EM whole seed control		✓	RIN: 9.70	
Glob scrape embed 6/29		✓	RIN: 2.30	
JP1		✓	RIN N/A	
Oanh-2		✓	RIN N/A	
3		✓	RIN N/A	
4		✓	RIN N/A	
5		✓	RIN: 1.60	
6		✓	RIN: 1.50	
7		✓	RIN N/A	
8		✓	RIN: 1.60	
Sample 11			All Other Samples	
Ladder		✓	All Other Samples	

**Chip Lot #**

**Reagent Kit Lot #**

**Chip Comments :**

Assay Class: Eukaryote Total RNA Pico  
Data Path: C:\...ents and Settings\Bioanalyzer\2012-07-03\2012-07-03\_002.xad

Created: 7/3/2012 10:36:13 AM  
Modified: 7/3/2012 11:04:02 AM

## Electrophoresis Assay Details

### General Analysis Settings

Number of Available Sample and Ladder Wells (Max.) : 12  
Minimum Visible Range [s] : 17  
Maximum Visible Range [s] : 70  
Start Analysis Time Range [s] : 18  
End Analysis Time Range [s] : 69  
Ladder Concentration [pg/ $\mu$ l] : 1000  
Lower Marker Concentration [pg/ $\mu$ l] : 0  
Upper Marker Concentration [pg/ $\mu$ l] : 0  
Used Lower Marker for Quantitation  
Standard Curve Fit is Logarithmic  
Show Data Aligned to Lower Marker

### Integrator Settings

Integration Start Time [s] : 18  
Integration End Time [s] : 69  
Slope Threshold : 0.6  
Height Threshold [FU] : 0.5  
Area Threshold : 0.2  
Width Threshold [s] : 0.1  
Baseline Plateau [s] : 6

### Filter Settings

Filter Width [s] : 0.5  
Polynomial Order : 4

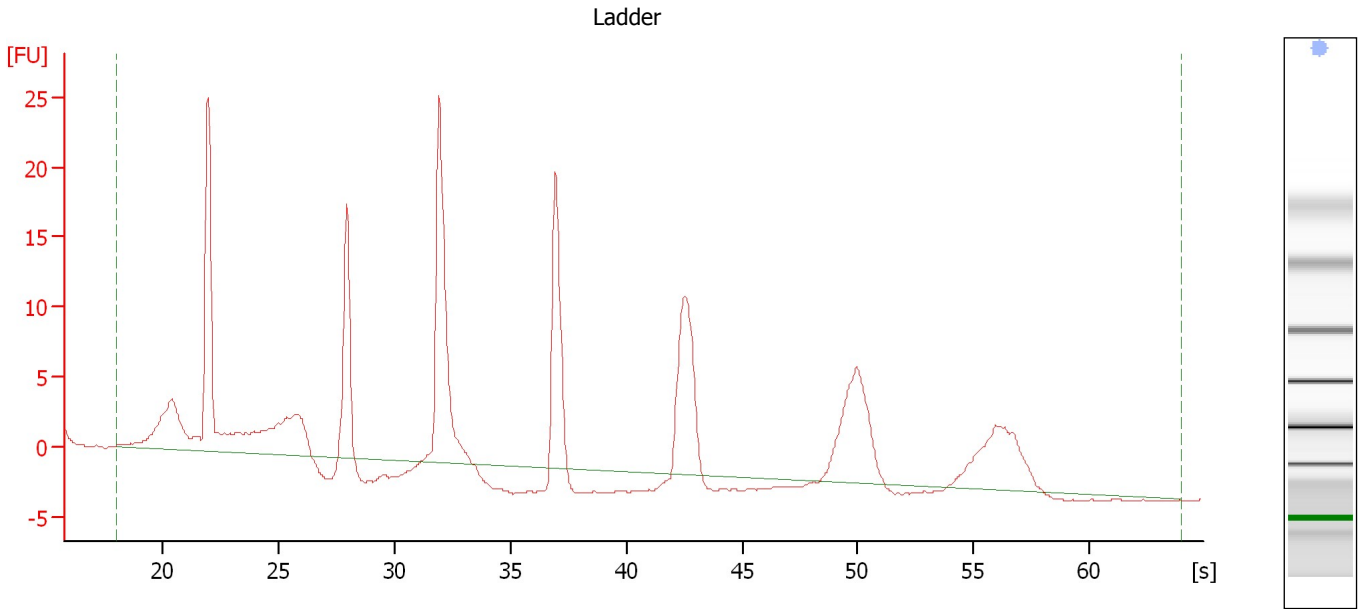
### Ladder

Ladder Peak	Size
1	25
2	200
3	500
4	1000
5	2000
6	4000

Assay Class: Eukaryote Total RNA Pico  
Data Path: C:\...ents and Settings\Bioanalyzer\2012-07-03\2012-07-03\_002.xad

Created: 7/3/2012 10:36:13 AM  
Modified: 7/3/2012 11:04:02 AM

**Electropherogram Summary**



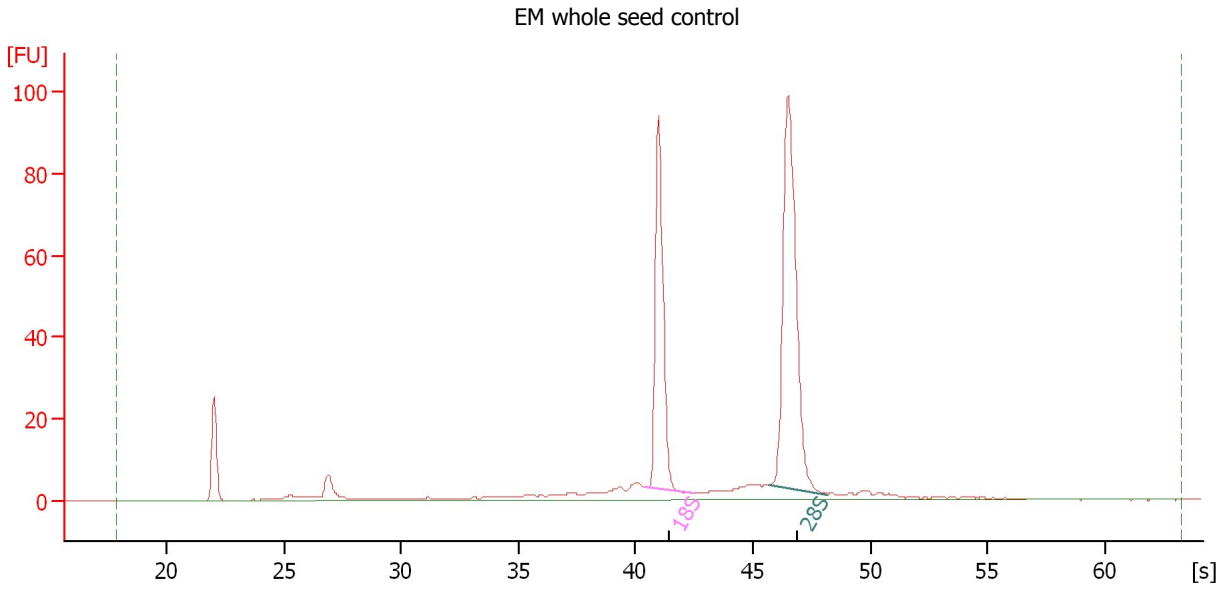
**Overall Results for Ladder**

RNA Area:	193.6	Result Flagging Color:	<span style="background-color: #add8e6; border: 1px solid black; display: inline-block; width: 20px; height: 10px;"></span>
RNA Concentration:	1,000 pg/μl	Result Flagging Label:	All Other Samples

Assay Class: Eukaryote Total RNA Pico  
 Data Path: C:\...ents and Settings\Bioanalyzer\2012-07-03\2012-07-03\_002.xad

Created: 7/3/2012 10:36:13 AM  
 Modified: 7/3/2012 11:04:02 AM

**Electropherogram Summary Continued ...**



**Setpoint Deviations for sample 1 : EM whole seed control**

Height Threshold [FU] : 0.7                      Width Threshold [s] : 0.3

**Overall Results for sample 1 : EM whole seed control**

RNA Area: 335.1                      RNA Integrity Number (RIN): 9.7 (B.02.08)  
 RNA Concentration: 1,731 pg/μl                      Result Flagging Color:   
 rRNA Ratio [28s / 18s]: 1.6                      Result Flagging Label: RIN: 9.70

**Fragment table for sample 1 : EM whole seed control**

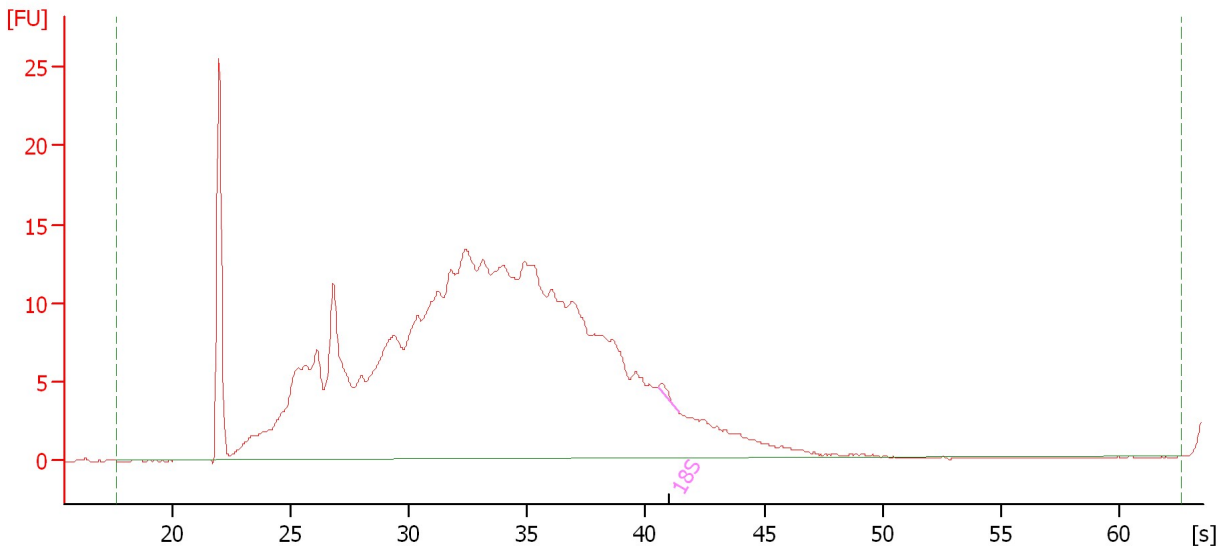
Name	Start Time [s]	End Time [s]	Area	% of total Area
18S	40.43	42.44	86.3	25.8
28S	45.70	48.17	133.9	40.0

Assay Class: Eukaryote Total RNA Pico  
Data Path: C:\...ents and Settings\Bioanalyzer\2012-07-03\2012-07-03\_002.xad

Created: 7/3/2012 10:36:13 AM  
Modified: 7/3/2012 11:04:02 AM

**Electropherogram Summary Continued ...**

Glob scrape embed 6/29



**Overall Results for sample 2 : Glob scrape embed 6/29**

RNA Area:	455.6	RNA Integrity Number (RIN):	2.3 (B.02.08)
RNA Concentration:	2,354 pg/μl	Result Flagging Color:	<span style="background-color: #ccccff; border: 1px solid black; display: inline-block; width: 20px; height: 10px;"></span>
rRNA Ratio [28s / 18s]:	0.0	Result Flagging Label:	RIN: 2.30

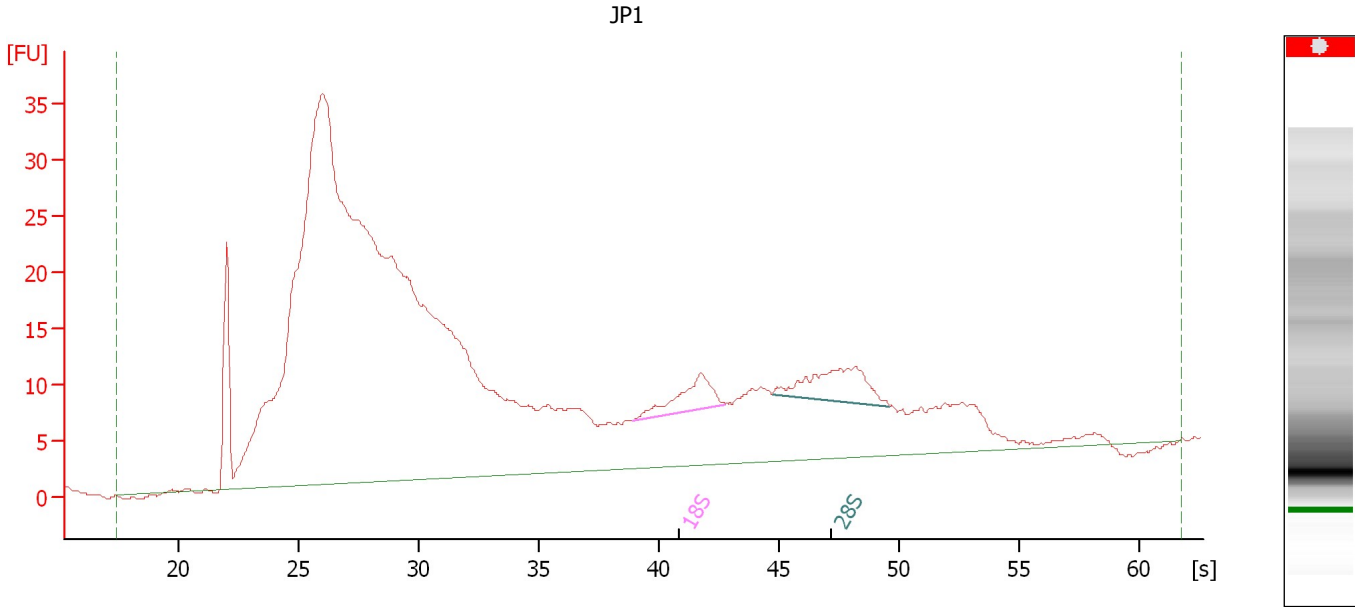
**Fragment table for sample 2 : Glob scrape embed 6/29**

Name	Start Time [s]	End Time [s]	Area	% of total Area
18S	40.55	41.37	0.6	0.1

Assay Class: Eukaryote Total RNA Pico  
Data Path: C:\...ents and Settings\Bioanalyzer\2012-07-03\2012-07-03\_002.xad

Created: 7/3/2012 10:36:13 AM  
Modified: 7/3/2012 11:04:02 AM

**Electropherogram Summary Continued ...**



**Overall Results for sample 3 : JP1**

RNA Area:	926.0	RNA Integrity Number (RIN):	N/A (B.02.08)
RNA Concentration:	4,783 pg/μl	Result Flagging Color:	
rRNA Ratio [28s / 18s]:	1.5	Result Flagging Label:	RIN N/A

**Fragment table for sample 3 : JP1**

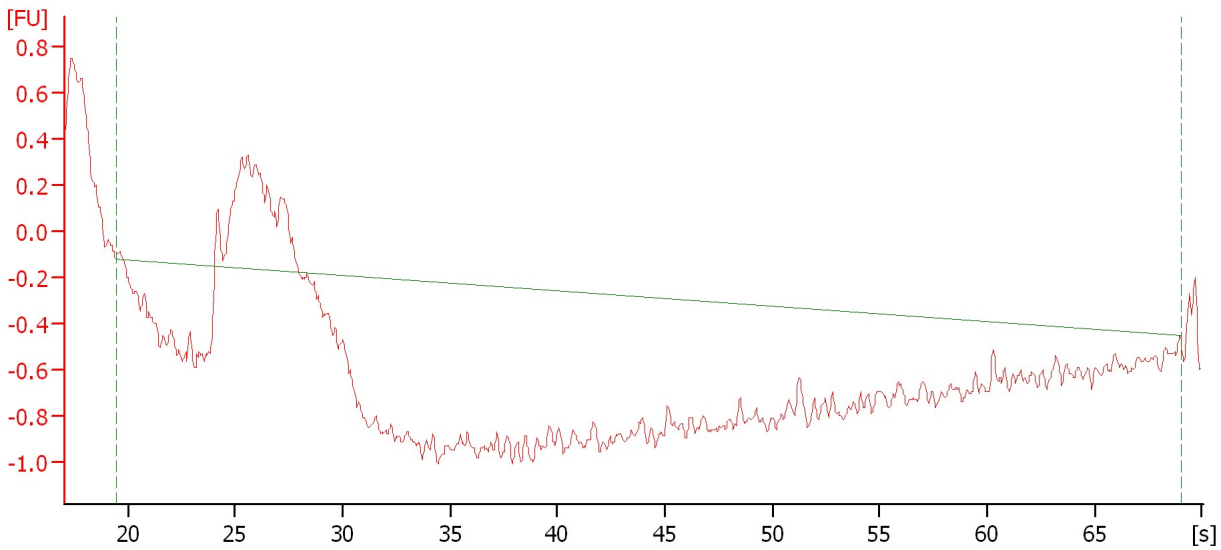
Name	Start Time [s]	End Time [s]	Area	% of total Area
18S	38.90	42.75	12.0	1.3
28S	44.72	49.59	17.4	1.9

Assay Class: Eukaryote Total RNA Pico  
Data Path: C:\...ents and Settings\Bioanalyzer\2012-07-03\2012-07-03\_002.xad

Created: 7/3/2012 10:36:13 AM  
Modified: 7/3/2012 11:04:02 AM

**Electropherogram Summary Continued ...**

Oanh-2



**Overall Results for sample 4 : Oanh-2**

RNA Concentration: 22 pg/μl  
rRNA Ratio [28s / 18s]: 0.0

Result Flagging Color:   
Result Flagging Label: RIN N/A

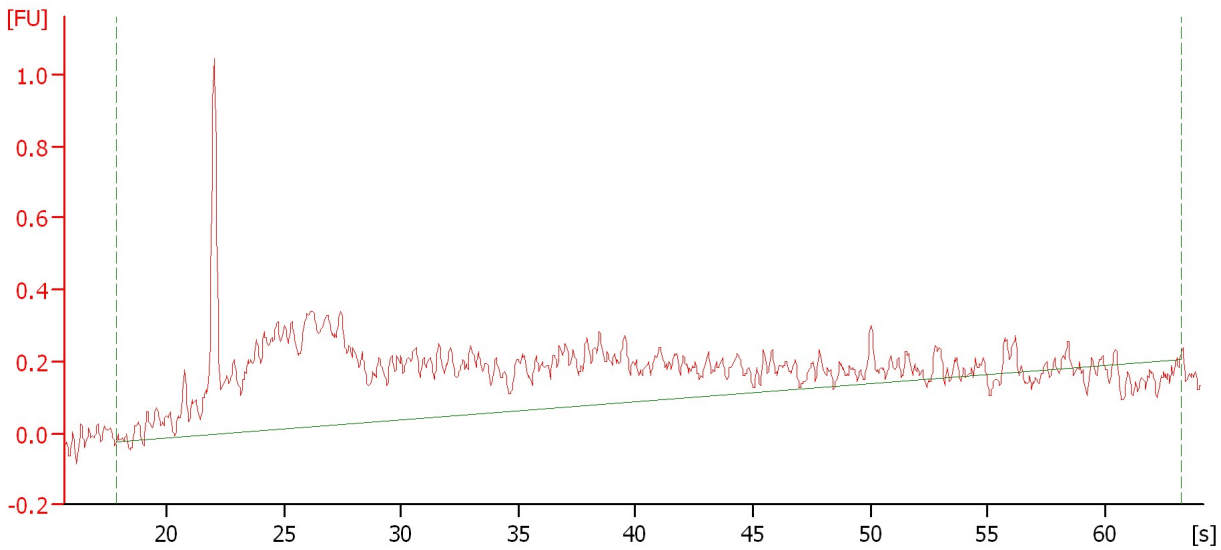


Assay Class: Eukaryote Total RNA Pico  
Data Path: C:\...ents and Settings\Bioanalyzer\2012-07-03\2012-07-03\_002.xad


Created: 7/3/2012 10:36:13 AM  
Modified: 7/3/2012 11:04:02 AM

**Electropherogram Summary Continued ...**

3



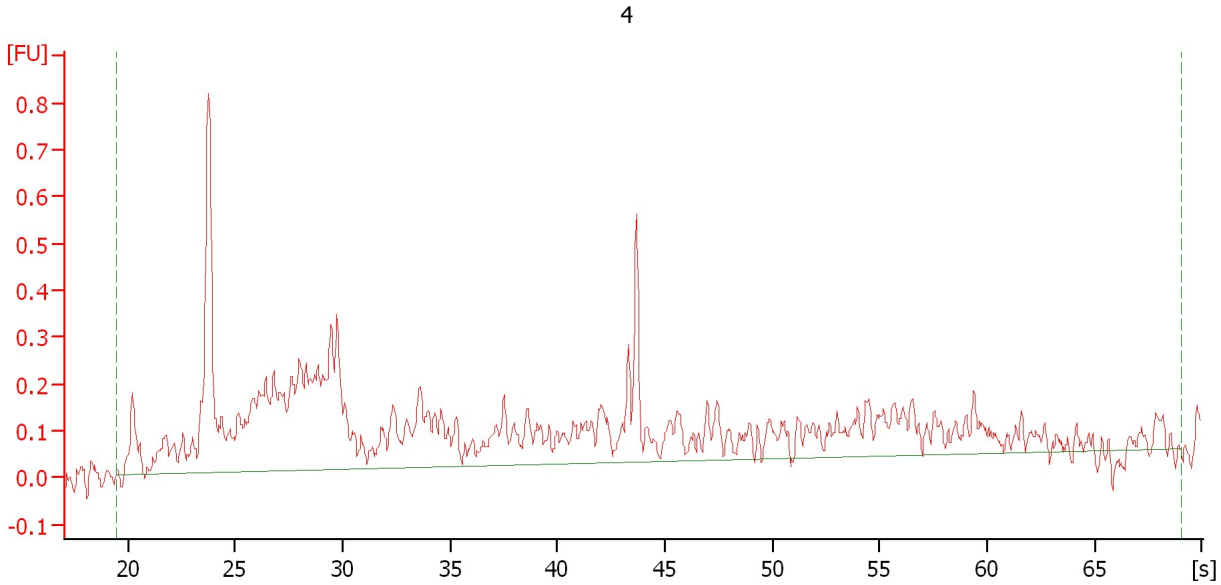
**Overall Results for sample 5 : 3**

RNA Area:	13.5	RNA Integrity Number (RIN):	N/A (B.02.08)
RNA Concentration:	70 pg/μl	Result Flagging Color:	
rRNA Ratio [28s / 18s]:	0.0	Result Flagging Label:	RIN N/A

Assay Class: Eukaryote Total RNA Pico  
Data Path: C:\...ents and Settings\Bioanalyzer\2012-07-03\2012-07-03\_002.xad

Created: 7/3/2012 10:36:13 AM  
Modified: 7/3/2012 11:04:02 AM

**Electropherogram Summary Continued ...**



**Overall Results for sample 6 : 4**

RNA Concentration: 55 pg/ $\mu$ l  
rRNA Ratio [28s / 18s]: 0.0

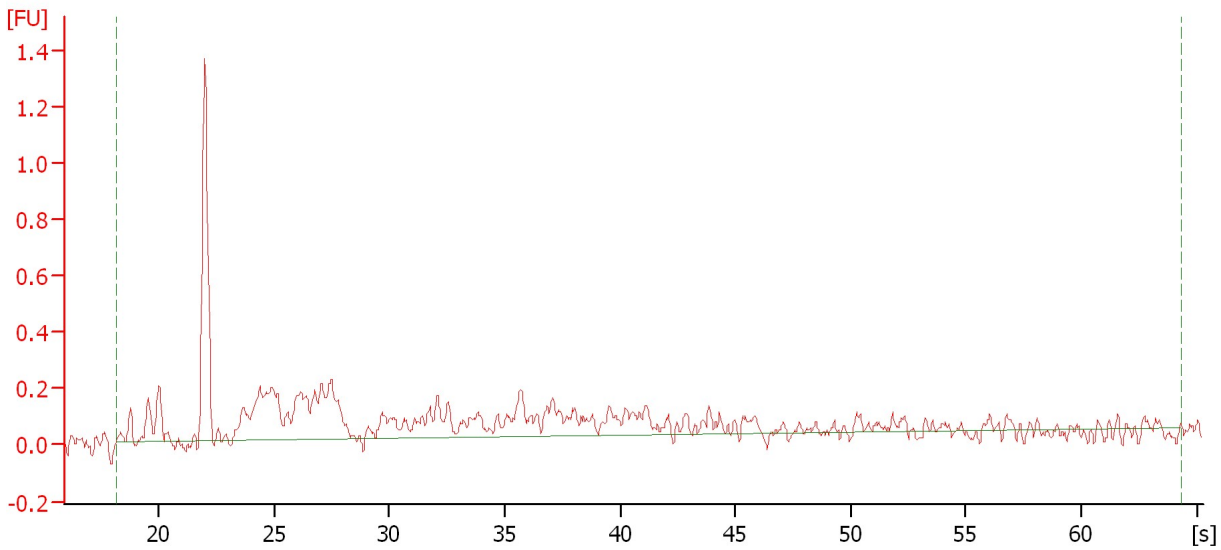
Result Flagging Color:   
Result Flagging Label: RIN N/A

Assay Class: Eukaryote Total RNA Pico  
Data Path: C:\...ents and Settings\Bioanalyzer\2012-07-03\2012-07-03\_002.xad

Created: 7/3/2012 10:36:13 AM  
Modified: 7/3/2012 11:04:02 AM

**Electropherogram Summary Continued ...**

5



**Overall Results for sample 7 : 5**

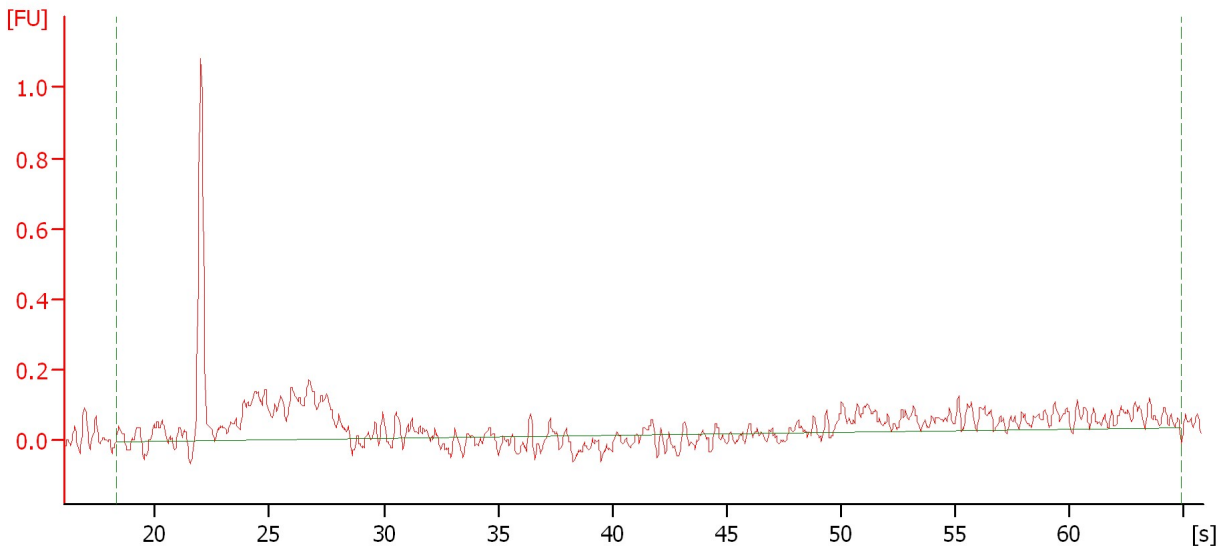
RNA Area:	6.3	RNA Integrity Number (RIN):	1.6 (B.02.08)
RNA Concentration:	33 pg/μl	Result Flagging Color:	<span style="background-color: #ccccff; border: 1px solid black; display: inline-block; width: 20px; height: 10px;"></span>
rRNA Ratio [28s / 18s]:	0.0	Result Flagging Label:	RIN: 1.60

Assay Class: Eukaryote Total RNA Pico  
Data Path: C:\...ents and Settings\Bioanalyzer\2012-07-03\2012-07-03\_002.xad

Created: 7/3/2012 10:36:13 AM  
Modified: 7/3/2012 11:04:02 AM

**Electropherogram Summary Continued ...**

6



**Overall Results for sample 8 : 6**

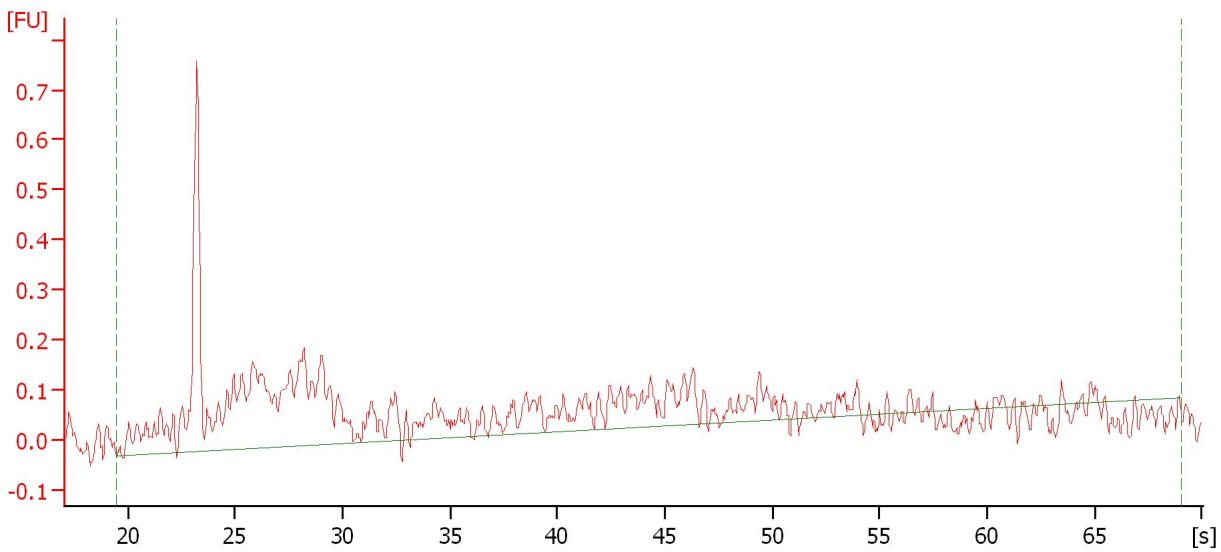
RNA Area:	3.8	RNA Integrity Number (RIN):	1.5 (B.02.08)
RNA Concentration:	20 pg/μl	Result Flagging Color:	<span style="background-color: #ccccff; border: 1px solid black; display: inline-block; width: 20px; height: 10px;"></span>
rRNA Ratio [28s / 18s]:	0.0	Result Flagging Label:	RIN: 1.50

Assay Class: Eukaryote Total RNA Pico  
Data Path: C:\...ents and Settings\Bioanalyzer\2012-07-03\2012-07-03\_002.xad

Created: 7/3/2012 10:36:13 AM  
Modified: 7/3/2012 11:04:02 AM

**Electropherogram Summary Continued ...**

7



**Overall Results for sample 9 : 7**

RNA Concentration: 35 pg/ $\mu$ l  
rRNA Ratio [28s / 18s]: 0.0

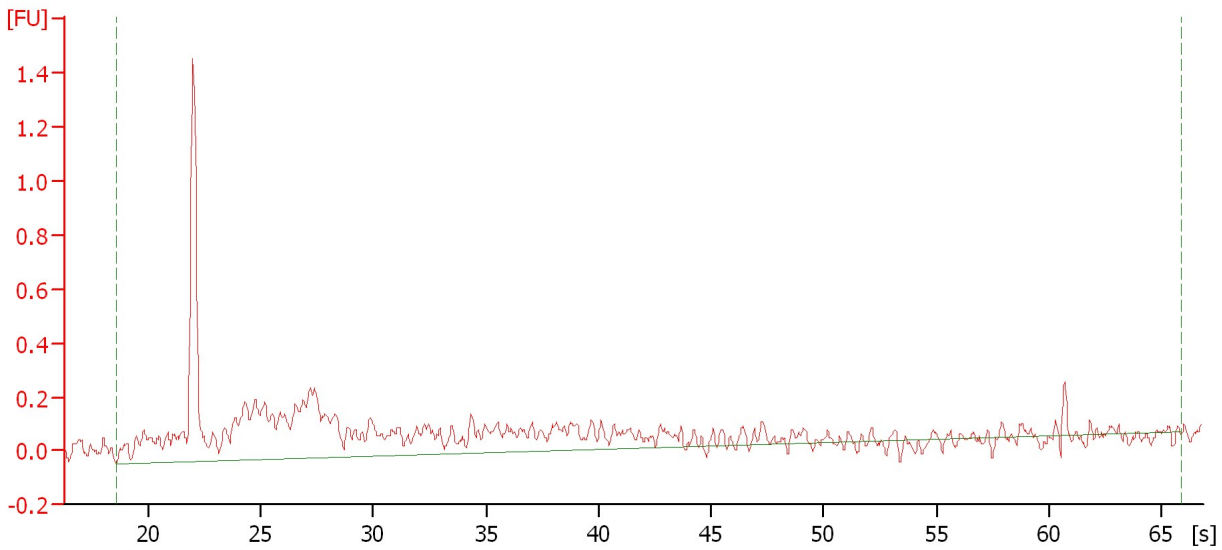
Result Flagging Color:   
Result Flagging Label: RIN N/A

Assay Class: Eukaryote Total RNA Pico  
Data Path: C:\...ents and Settings\Bioanalyzer\2012-07-03\2012-07-03\_002.xad

Created: 7/3/2012 10:36:13 AM  
Modified: 7/3/2012 11:04:02 AM

**Electropherogram Summary Continued ...**

8



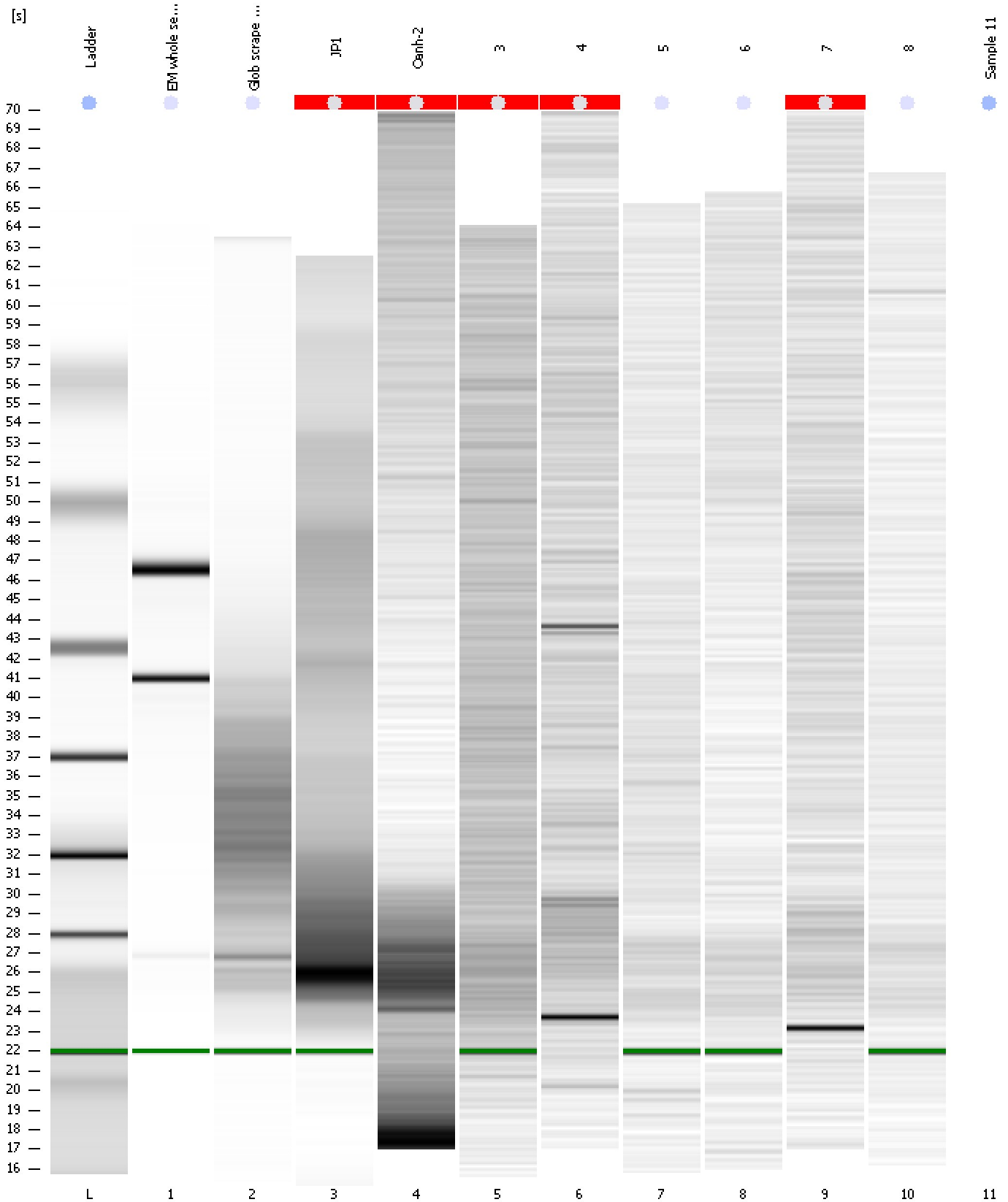
**Overall Results for sample 10 : 8**

RNA Area:	8.7	RNA Integrity Number (RIN):	1.6 (B.02.08)
RNA Concentration:	45 pg/μl	Result Flagging Color:	<span style="background-color: #ccccff; border: 1px solid black; display: inline-block; width: 20px; height: 10px;"></span>
rRNA Ratio [28s / 18s]:	0.0	Result Flagging Label:	RIN: 1.60

Assay Class: Eukaryote Total RNA Pico  
Data Path: C:\...ents and Settings\Bioanalyzer\2012-07-03\2012-07-03\_002.xad

Created: 7/3/2012 10:36:13 AM  
Modified: 7/3/2012 11:04:02 AM

Gel Image



Assay Class: Eukaryote Total RNA Pico  
Data Path: C:\...ents and Settings\Bioanalyzer\2012-07-03\2012-07-03\_002.xad

Created: 7/3/2012 10:36:13 AM  
Modified: 7/3/2012 11:04:02 AM

**Invalid Samples**

Sample 11 has not been run, no results available.



Assay Class: Eukaryote Total RNA Pico  
 Data Path: C:\...ents and Settings\Bioanalyzer\2012-07-03\2012-07-03\_002.xad

Created: 7/3/2012 10:36:13 AM  
 Modified: 7/3/2012 11:04:02 AM

**Run Logbook**

Description	Number	Source	Category	Sub Category	Time	Time Zone	User	Host
Run ended on port 1 (Number of wells acquired: 11)		Instrument	Run		7/3/2012 10:57:40 AM	(GMT --07:00) Pacific Standard Time	UC Davis	D8XSMGH1
Run started on port 1 (File: C:\Documents and Settings\Bioanalyzer\2012-07-03\2012-07-03_002.xad)		Instrument	Run		7/3/2012 10:36:19 AM	(GMT --07:00) Pacific Standard Time	UC Davis	D8XSMGH1
Product Number : G2938B		Instrument	Run		7/3/2012 10:36:19 AM	(GMT --07:00) Pacific Standard Time	UC Davis	D8XSMGH1
Name :		Instrument	Run		7/3/2012 10:36:19 AM	(GMT --07:00) Pacific Standard Time	UC Davis	D8XSMGH1
Vendor : Agilent Technologies		Instrument	Run		7/3/2012 10:36:19 AM	(GMT --07:00) Pacific Standard Time	UC Davis	D8XSMGH1
Serial# : DE13701086		Instrument	Run		7/3/2012 10:36:19 AM	(GMT --07:00) Pacific Standard Time	UC Davis	D8XSMGH1
Firmware : C.01.069		Instrument	Run		7/3/2012 10:36:19 AM	(GMT --07:00) Pacific Standard Time	UC Davis	D8XSMGH1
Cartridge : Electrode		Instrument	Run		7/3/2012 10:36:19 AM	(GMT --07:00) Pacific Standard Time	UC Davis	D8XSMGH1