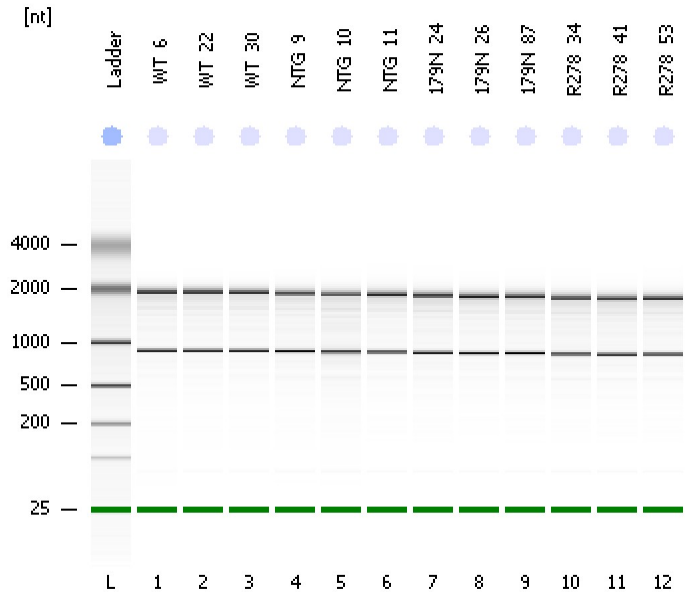


Assay Class: Eukaryote Total RNA Nano
Data Path: C:\...ents and Settings\Bioanalyzer\2012-07-03\2012-07-03_006.xad

Created: 7/3/2012 3:11:09 PM
Modified: 7/3/2012 3:34:59 PM

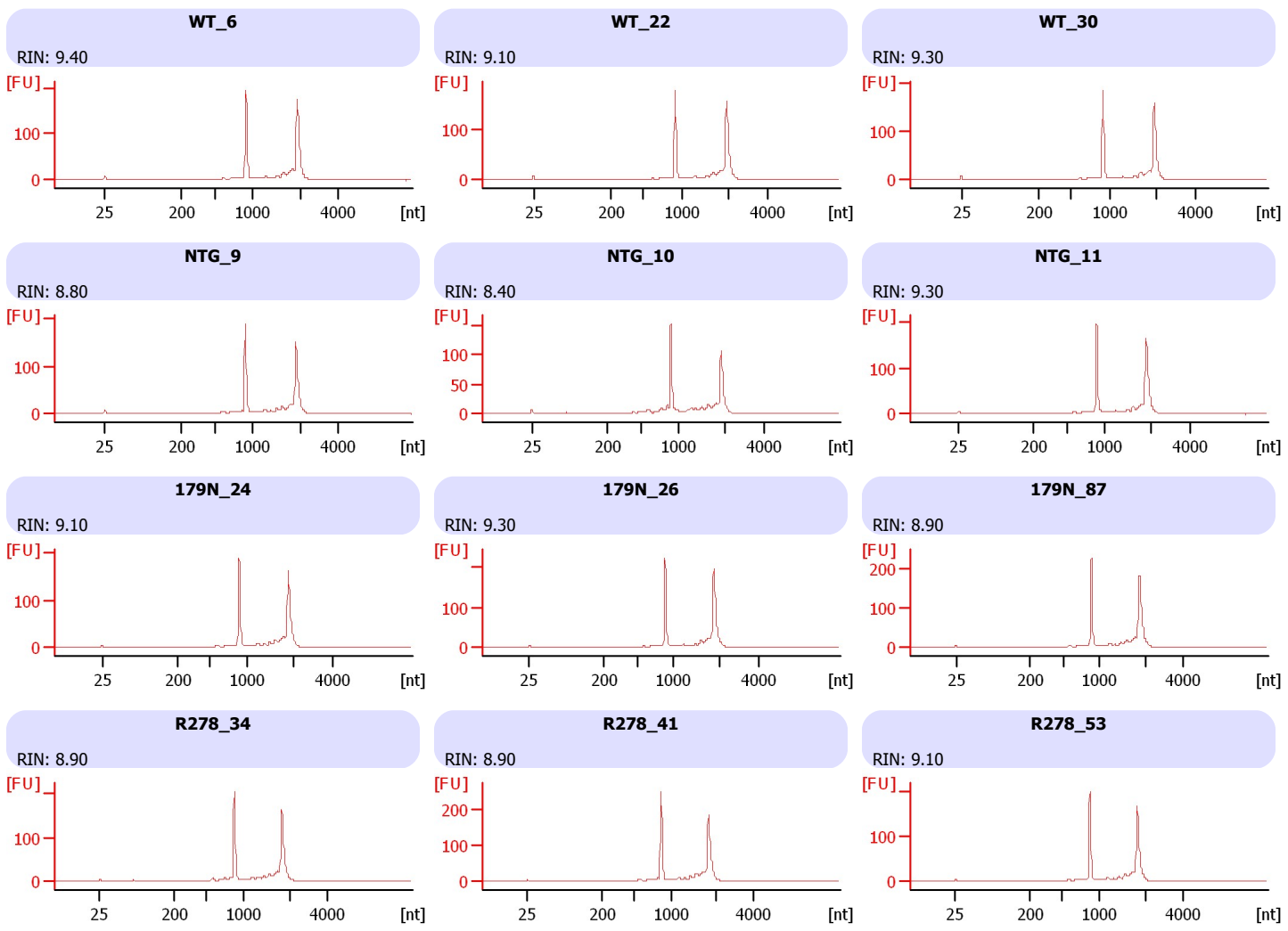
Electrophoresis File Run Summary



Instrument Information:
Instrument Name: DE13701086 Firmware: C.01.069
Serial#: DE13701086 Type: G2938B

Assay Information:
Assay Origin Path: C:\Program Files\Agilent\2100 bioanalyzer\2100 expert\assays\RNA\Eukaryote Total RNA Nano Series II.xsy
Assay Class: Eukaryote Total RNA Nano
Version: 2.6
Assay Comments: Total RNA Analysis ng sensitivity (Eukaryote)
© Copyright 2003 - 2009 Agilent Technologies, Inc.

Chip Information:
Chip Lot #: Reagent Kit Lot #: Chip Comments:



Assay Class: Eukaryote Total RNA Nano
Data Path: C:\...ents and Settings\Bioanalyzer\2012-07-03\2012-07-03_006.xad

Created: 7/3/2012 3:11:09 PM
Modified: 7/3/2012 3:34:59 PM

Electrophoresis File Run Summary (Chip Summary)

Sample Name	Sample Comment	Status	Result Label	Result Color
WT_6		✓	RIN: 9.40	
WT_22		✓	RIN: 9.10	
WT_30		✓	RIN: 9.30	
NTG_9		✓	RIN: 8.80	
NTG_10		✓	RIN: 8.40	
NTG_11		✓	RIN: 9.30	
179N_24		✓	RIN: 9.10	
179N_26		✓	RIN: 9.30	
179N_87		✓	RIN: 8.90	
R278_34		✓	RIN: 8.90	
R278_41		✓	RIN: 8.90	
R278_53		✓	RIN: 9.10	
Ladder		✓	All Other Samples	

Chip Lot #

Reagent Kit Lot #

Chip Comments :

Assay Class: Eukaryote Total RNA Nano
Data Path: C:\...ents and Settings\Bioanalyzer\2012-07-03\2012-07-03_006.xad

Created: 7/3/2012 3:11:09 PM
Modified: 7/3/2012 3:34:59 PM

Electrophoresis Assay Details

General Analysis Settings

Number of Available Sample and Ladder Wells (Max.) : 13
Minimum Visible Range [s] : 17
Maximum Visible Range [s] : 70
Start Analysis Time Range [s] : 19
End Analysis Time Range [s] : 69
Ladder Concentration [ng/ μ l] : 150
Lower Marker Concentration [ng/ μ l] : 0
Upper Marker Concentration [ng/ μ l] : 0
Used Lower Marker for Quantitation
Standard Curve Fit is Logarithmic
Show Data Aligned to Lower Marker

Integrator Settings

Integration Start Time [s] : 19
Integration End Time [s] : 69
Slope Threshold : 0.6
Height Threshold [FU] : 0.5
Area Threshold : 0.2
Width Threshold [s] : 0.5
Baseline Plateau [s] : 6

Filter Settings

Filter Width [s] : 0.5
Polynomial Order : 4

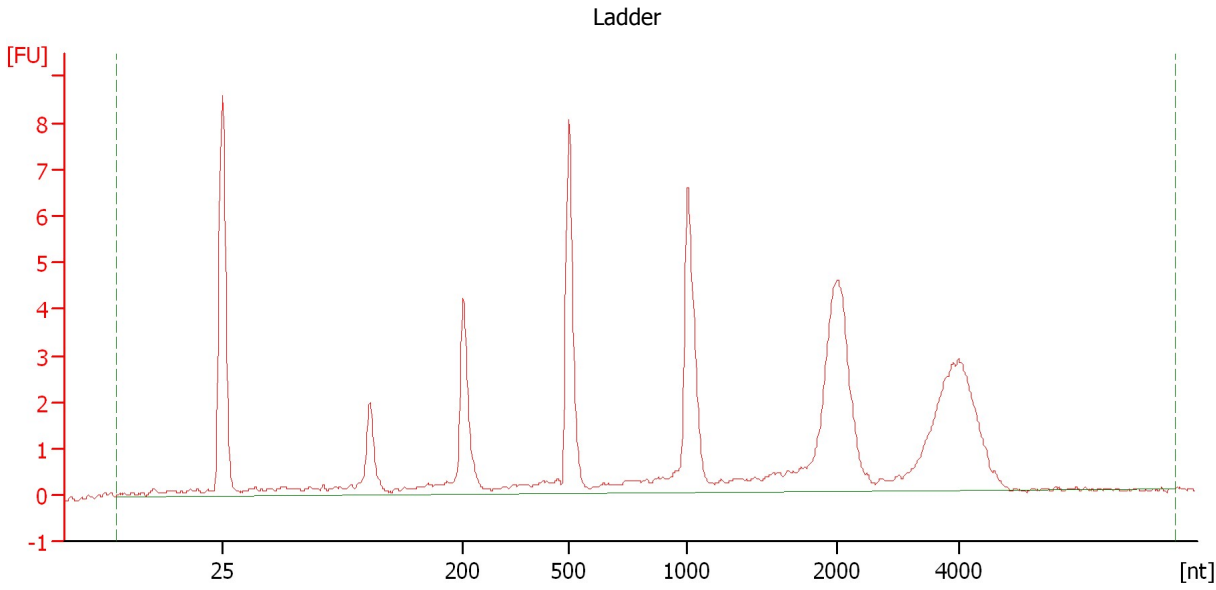
Ladder

Ladder Peak	Size
1	25
2	200
3	500
4	1000
5	2000
6	4000

Assay Class: Eukaryote Total RNA Nano
Data Path: C:\...ents and Settings\Bioanalyzer\2012-07-03\2012-07-03_006.xad

Created: 7/3/2012 3:11:09 PM
Modified: 7/3/2012 3:34:59 PM

Electropherogram Summary



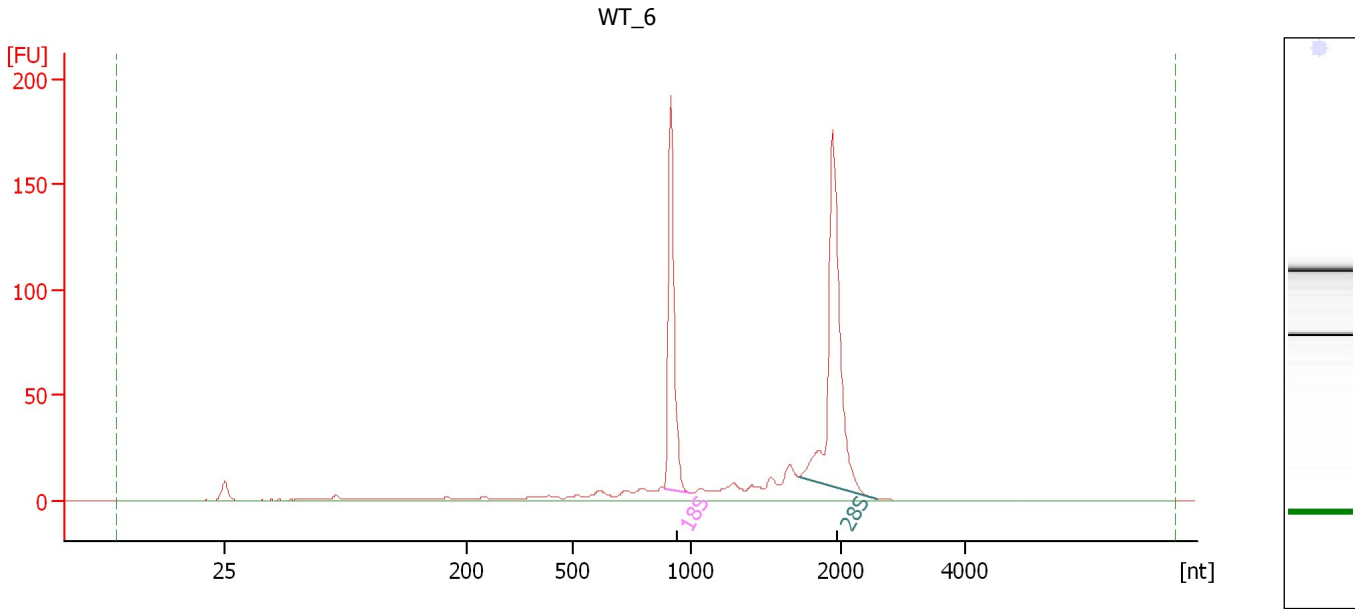
Overall Results for Ladder

RNA Area:	60.7	Result Flagging Color:	
RNA Concentration:	150 ng/ μ l	Result Flagging Label:	All Other Samples

Assay Class: Eukaryote Total RNA Nano
Data Path: C:\...ents and Settings\Bioanalyzer\2012-07-03\2012-07-03_006.xad

Created: 7/3/2012 3:11:09 PM
Modified: 7/3/2012 3:34:59 PM

Electropherogram Summary Continued ...



Overall Results for sample 1 : WT_6

RNA Area:	530.3	RNA Integrity Number (RIN):	9.4 (B.02.08)
RNA Concentration:	1,310 ng/μl	Result Flagging Color:	
rRNA Ratio [28s / 18s]:	1.5	Result Flagging Label:	RIN: 9.40

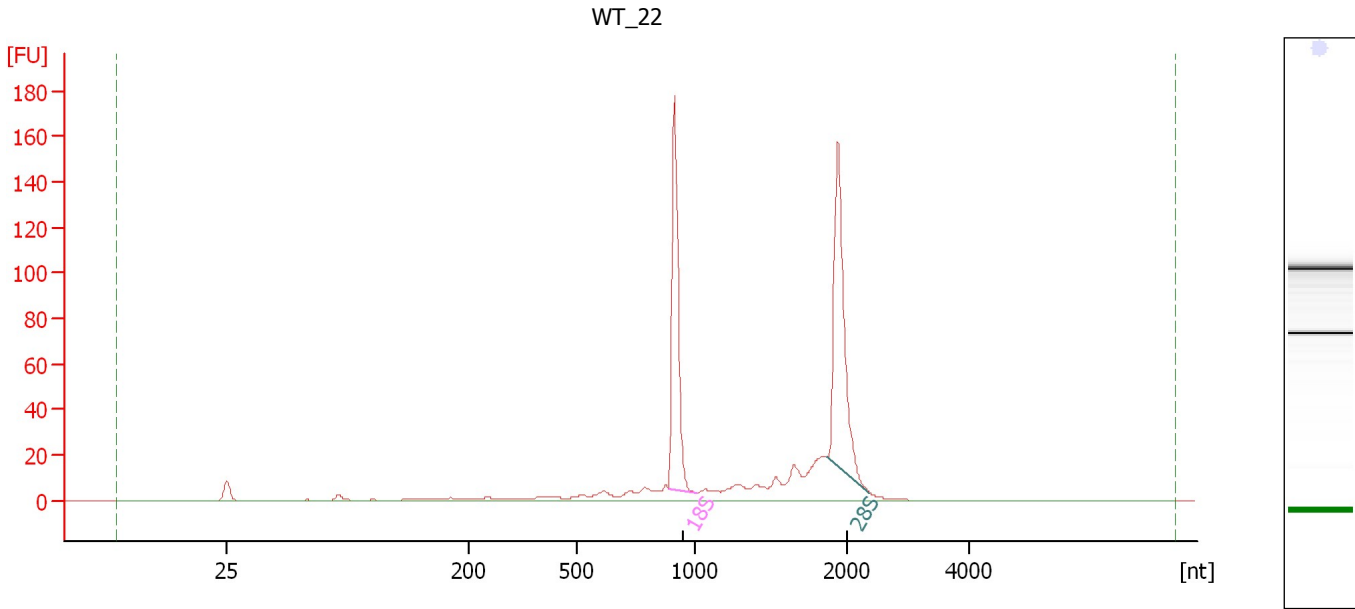
Fragment table for sample 1 : WT_6

Name	Start Size [nt]	End Size [nt]	Area	% of total Area
18S	884	1,001	133.3	25.1
28S	1,720	2,570	194.8	36.7

Assay Class: Eukaryote Total RNA Nano
Data Path: C:\...ents and Settings\Bioanalyzer\2012-07-03\2012-07-03_006.xad

Created: 7/3/2012 3:11:09 PM
Modified: 7/3/2012 3:34:59 PM

Electropherogram Summary Continued ...



Overall Results for sample 2 : WT_22

RNA Area:	488.6	RNA Integrity Number (RIN):	9.1 (B.02.08)
RNA Concentration:	1,207 ng/μl	Result Flagging Color:	
rRNA Ratio [28s / 18s]:	1.2	Result Flagging Label:	RIN: 9.10

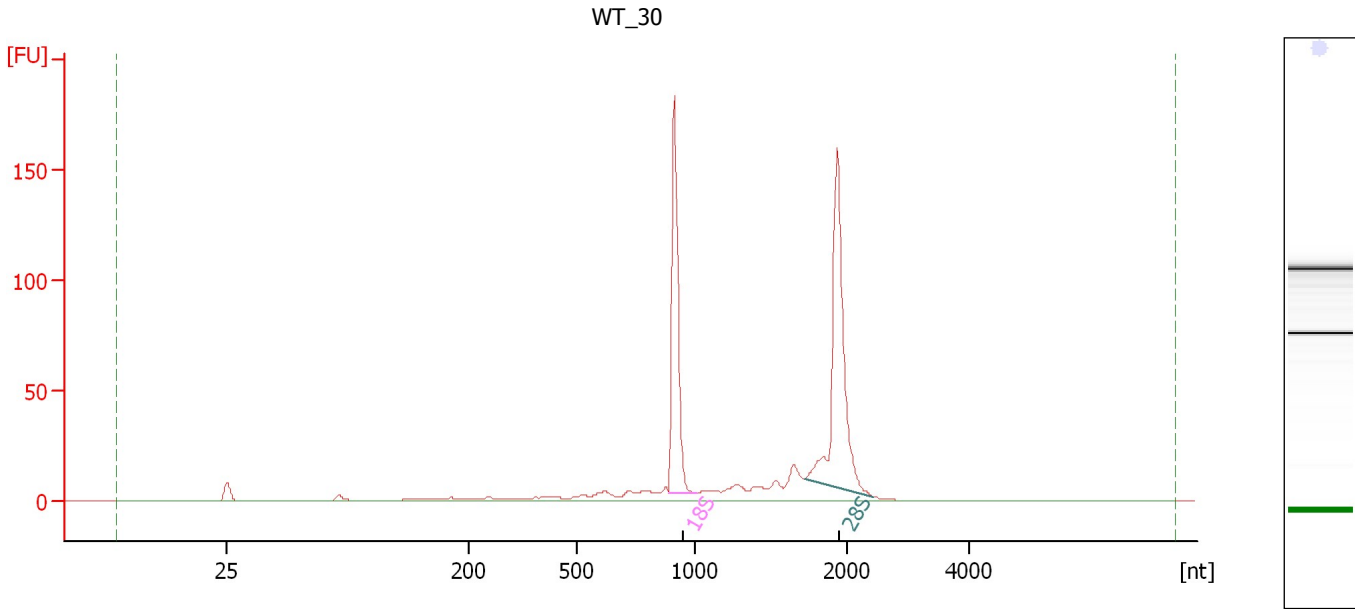
Fragment table for sample 2 : WT_22

Name	Start Size [nt]	End Size [nt]	Area	% of total Area
18S	885	1,010	121.7	24.9
28S	1,874	2,370	141.4	28.9

Assay Class: Eukaryote Total RNA Nano
Data Path: C:\...ents and Settings\Bioanalyzer\2012-07-03\2012-07-03_006.xad

Created: 7/3/2012 3:11:09 PM
Modified: 7/3/2012 3:34:59 PM

Electropherogram Summary Continued ...



Overall Results for sample 3 : WT_30

RNA Area:	480.1	RNA Integrity Number (RIN):	9.3 (B.02.08)
RNA Concentration:	1,186 ng/μl	Result Flagging Color:	
rRNA Ratio [28s / 18s]:	1.3	Result Flagging Label:	RIN: 9.30

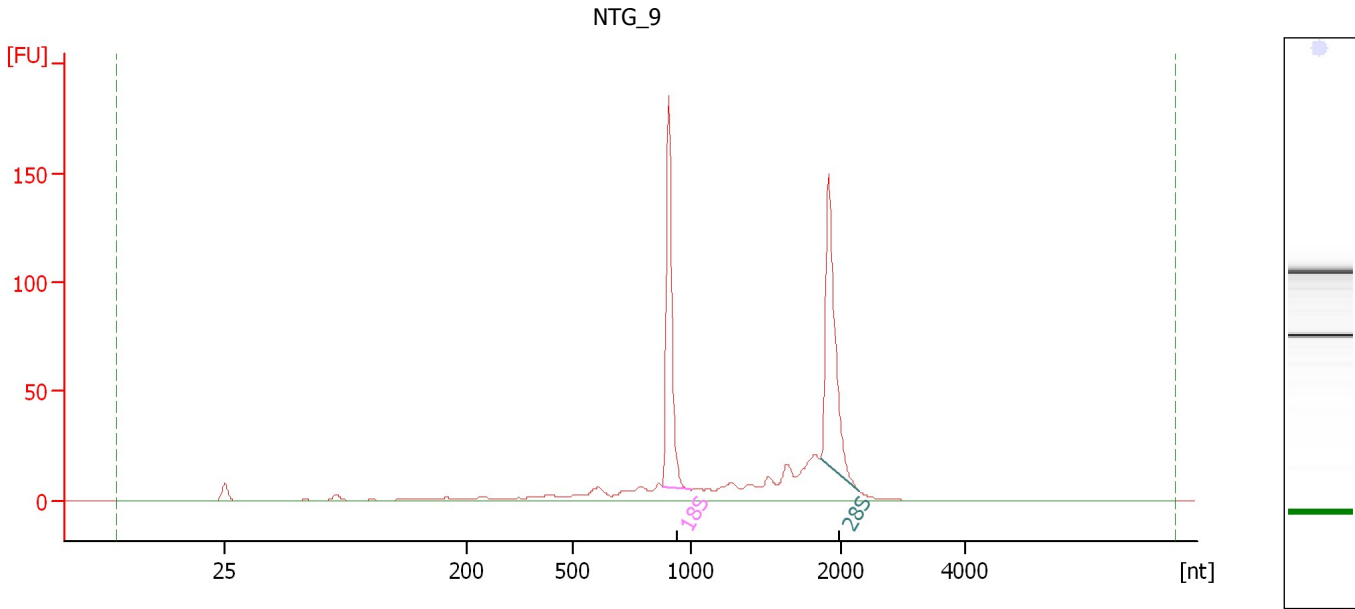
Fragment table for sample 3 : WT_30

Name	Start Size [nt]	End Size [nt]	Area	% of total Area
18S	885	1,003	125.5	26.1
28S	1,725	2,440	168.8	35.1

Assay Class: Eukaryote Total RNA Nano
Data Path: C:\...ents and Settings\Bioanalyzer\2012-07-03\2012-07-03_006.xad

Created: 7/3/2012 3:11:09 PM
Modified: 7/3/2012 3:34:59 PM

Electropherogram Summary Continued ...



Overall Results for sample 4 : NTG_9

RNA Area:	510.0	RNA Integrity Number (RIN):	8.8 (B.02.08)
RNA Concentration:	1,259 ng/μl	Result Flagging Color:	
rRNA Ratio [28s / 18s]:	1.0	Result Flagging Label:	RIN: 8.80

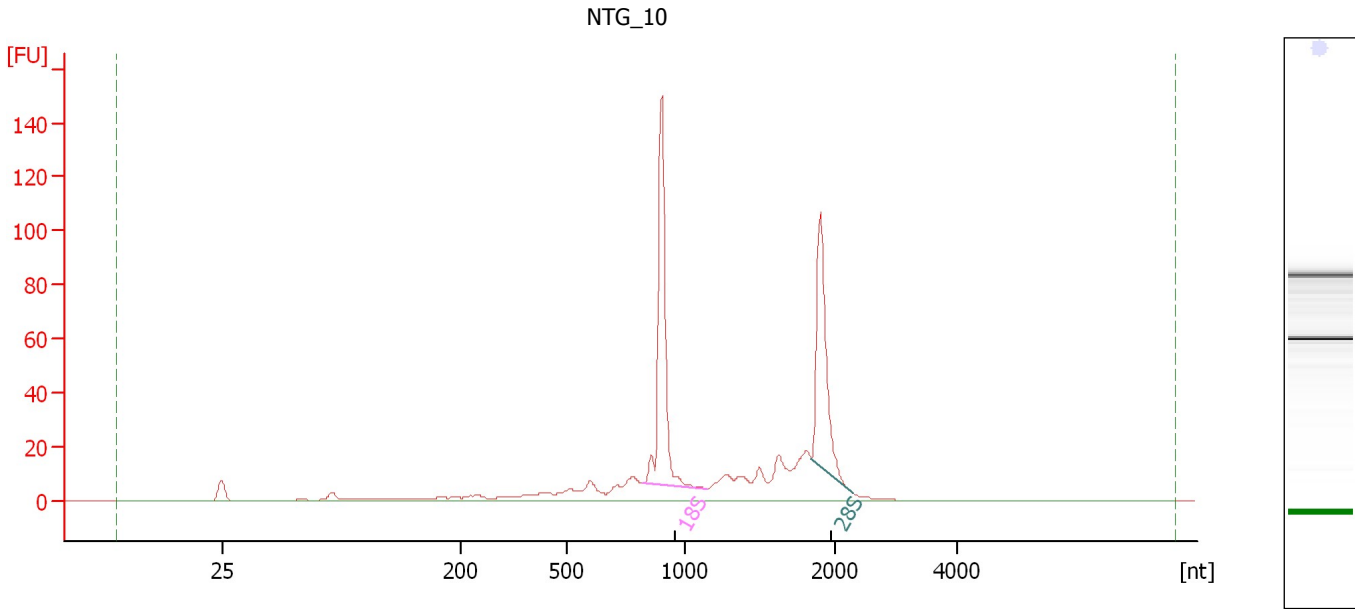
Fragment table for sample 4 : NTG_9

Name	Start Size [nt]	End Size [nt]	Area	% of total Area
18S	875	996	127.3	25.0
28S	1,855	2,290	128.3	25.2

Assay Class: Eukaryote Total RNA Nano
Data Path: C:\...ents and Settings\Bioanalyzer\2012-07-03\2012-07-03_006.xad

Created: 7/3/2012 3:11:09 PM
Modified: 7/3/2012 3:34:59 PM

Electropherogram Summary Continued ...



Overall Results for sample 5 : NTG_10

RNA Area:	472.1	RNA Integrity Number (RIN):	8.4 (B.02.08)
RNA Concentration:	1,166 ng/μl	Result Flagging Color:	
rRNA Ratio [28s / 18s]:	0.8	Result Flagging Label:	RIN: 8.40

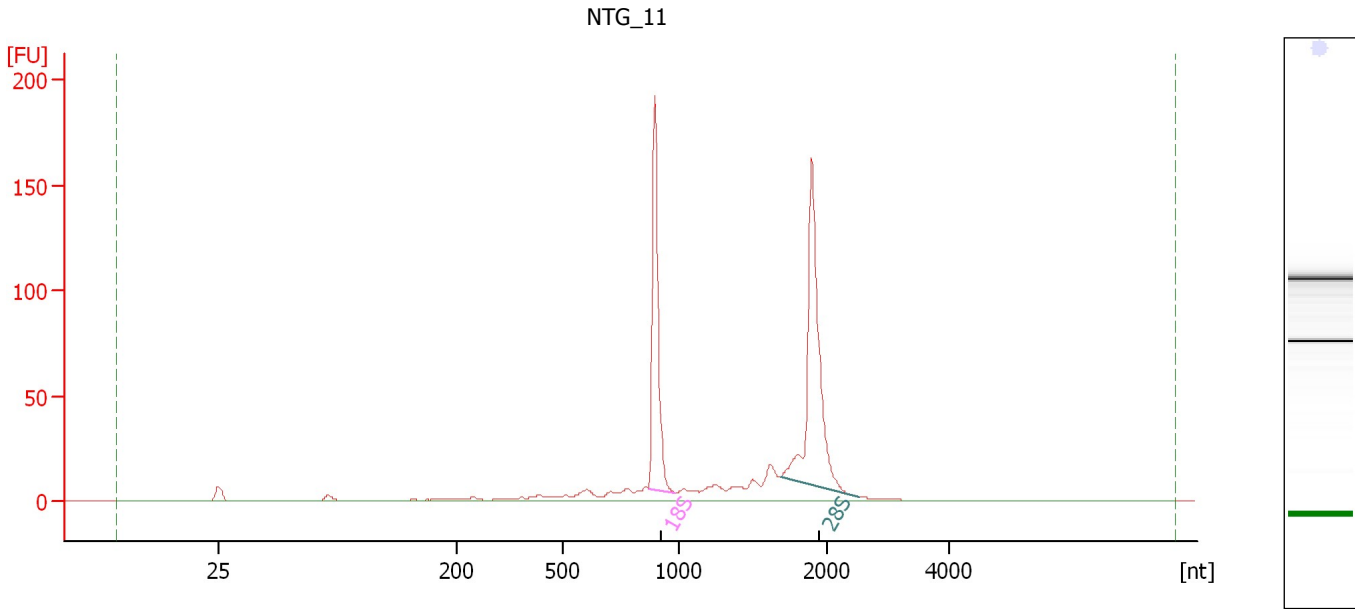
Fragment table for sample 5 : NTG_10

Name	Start Size [nt]	End Size [nt]	Area	% of total Area
18S	823	1,142	117.1	24.8
28S	1,843	2,284	88.0	18.6

Assay Class: Eukaryote Total RNA Nano
Data Path: C:\...ents and Settings\Bioanalyzer\2012-07-03\2012-07-03_006.xad

Created: 7/3/2012 3:11:09 PM
Modified: 7/3/2012 3:34:59 PM

Electropherogram Summary Continued ...



Overall Results for sample 6 : NTG_11

RNA Area:	533.4	RNA Integrity Number (RIN):	9.3 (B.02.08)
RNA Concentration:	1,317 ng/μl	Result Flagging Color:	
rRNA Ratio [28s / 18s]:	1.4	Result Flagging Label:	RIN: 9.30

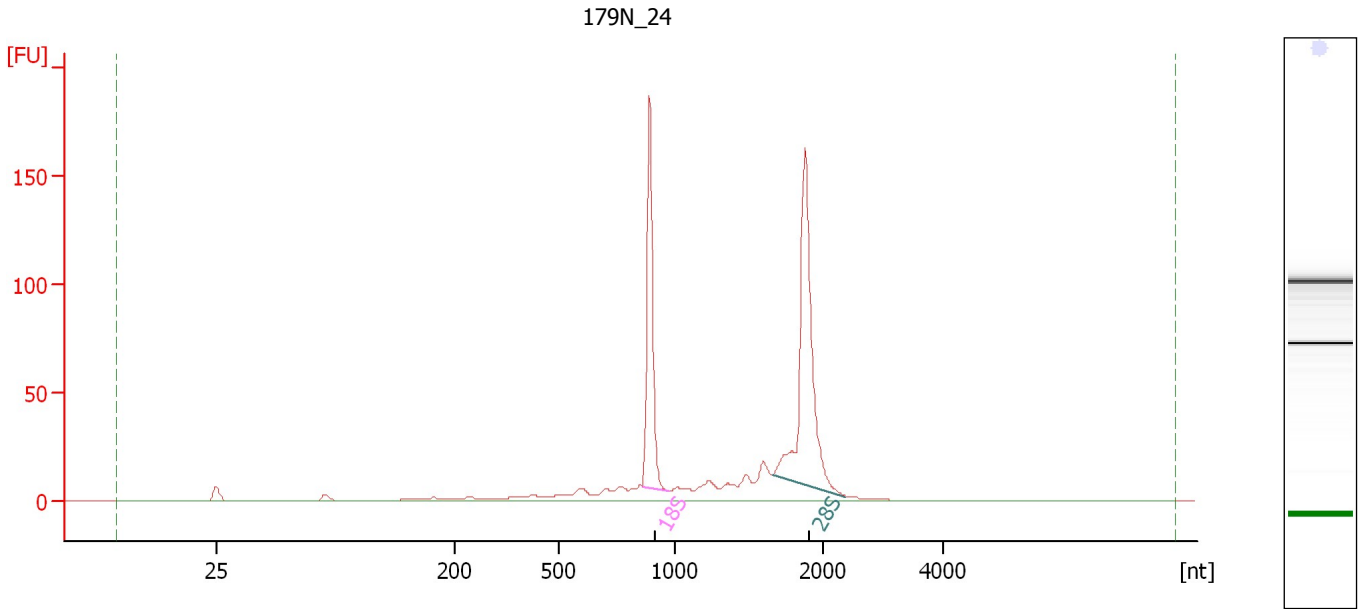
Fragment table for sample 6 : NTG_11

Name	Start Size [nt]	End Size [nt]	Area	% of total Area
18S	866	984	136.3	25.5
28S	1,680	2,507	185.2	34.7

Assay Class: Eukaryote Total RNA Nano
Data Path: C:\...ents and Settings\Bioanalyzer\2012-07-03\2012-07-03_006.xad

Created: 7/3/2012 3:11:09 PM
Modified: 7/3/2012 3:34:59 PM

Electropherogram Summary Continued ...



Overall Results for sample 7 : 179N_24

RNA Area: 545.4 RNA Integrity Number (RIN): 9.1 (B.02.08)
RNA Concentration: 1,347 ng/μl Result Flagging Color:
rRNA Ratio [28s / 18s]: 1.5 Result Flagging Label: RIN: 9.10

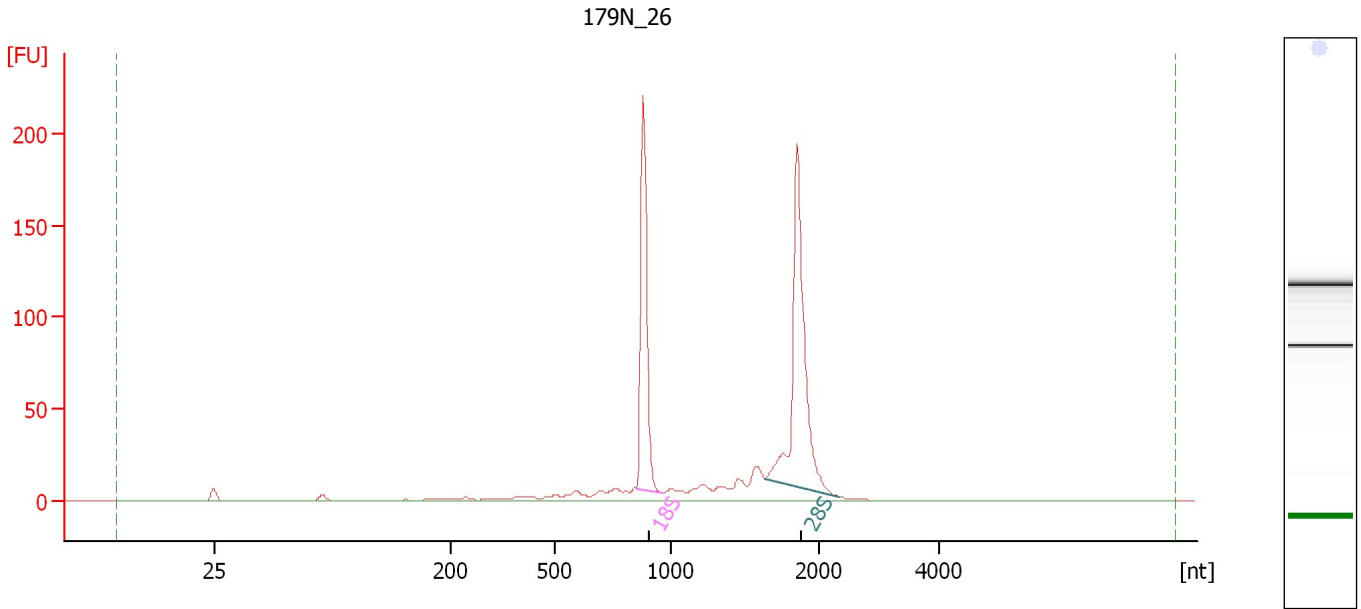
Fragment table for sample 7 : 179N_24

Name	Start Size [nt]	End Size [nt]	Area	% of total Area
18S	860	969	128.0	23.5
28S	1,653	2,373	186.0	34.1

Assay Class: Eukaryote Total RNA Nano
Data Path: C:\...ents and Settings\Bioanalyzer\2012-07-03\2012-07-03_006.xad

Created: 7/3/2012 3:11:09 PM
Modified: 7/3/2012 3:34:59 PM

Electropherogram Summary Continued ...



Overall Results for sample 8 : 179N_26

RNA Area: 615.3 RNA Integrity Number (RIN): 9.3 (B.02.08)
RNA Concentration: 1,519 ng/μl Result Flagging Color:
rRNA Ratio [28s / 18s]: 1.5 Result Flagging Label: RIN: 9.30

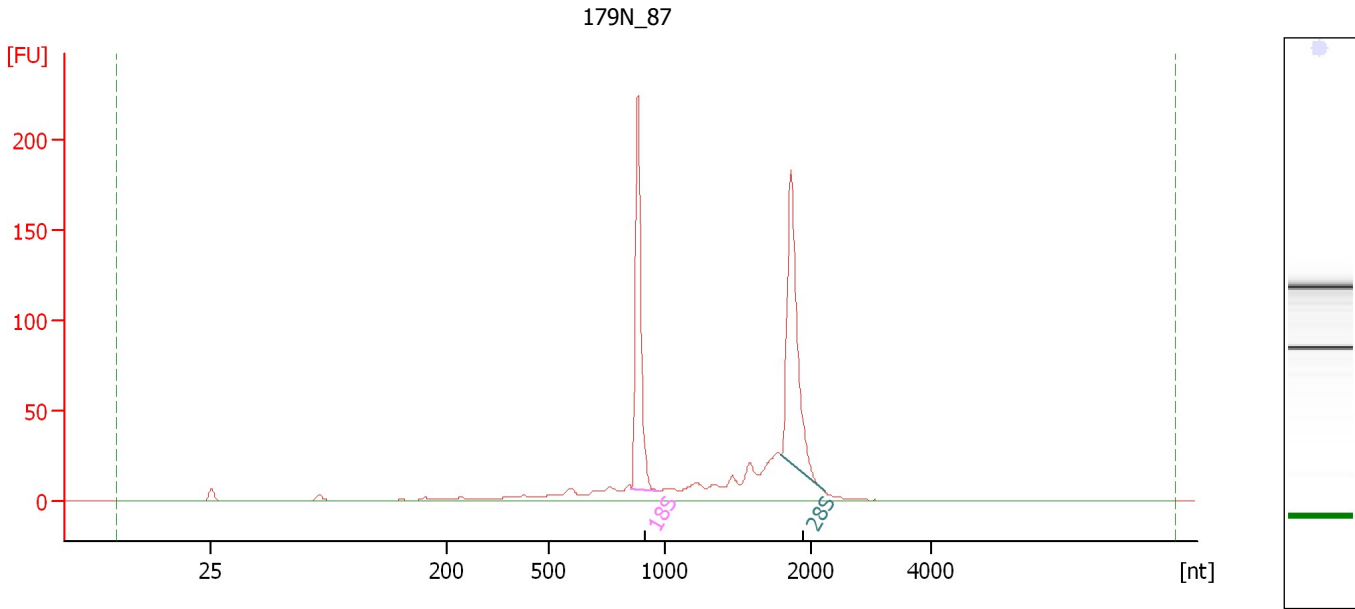
Fragment table for sample 8 : 179N_26

Name	Start Size [nt]	End Size [nt]	Area	% of total Area
18S	853	959	151.5	24.6
28S	1,639	2,346	225.3	36.6

Assay Class: Eukaryote Total RNA Nano
Data Path: C:\...ents and Settings\Bioanalyzer\2012-07-03\2012-07-03_006.xad

Created: 7/3/2012 3:11:09 PM
Modified: 7/3/2012 3:34:59 PM

Electropherogram Summary Continued ...



Overall Results for sample 9 : 179N_87

RNA Area: 650.4 RNA Integrity Number (RIN): 8.9 (B.02.08)
RNA Concentration: 1,606 ng/μl Result Flagging Color:
rRNA Ratio [28s / 18s]: 1.1 Result Flagging Label: RIN: 8.90

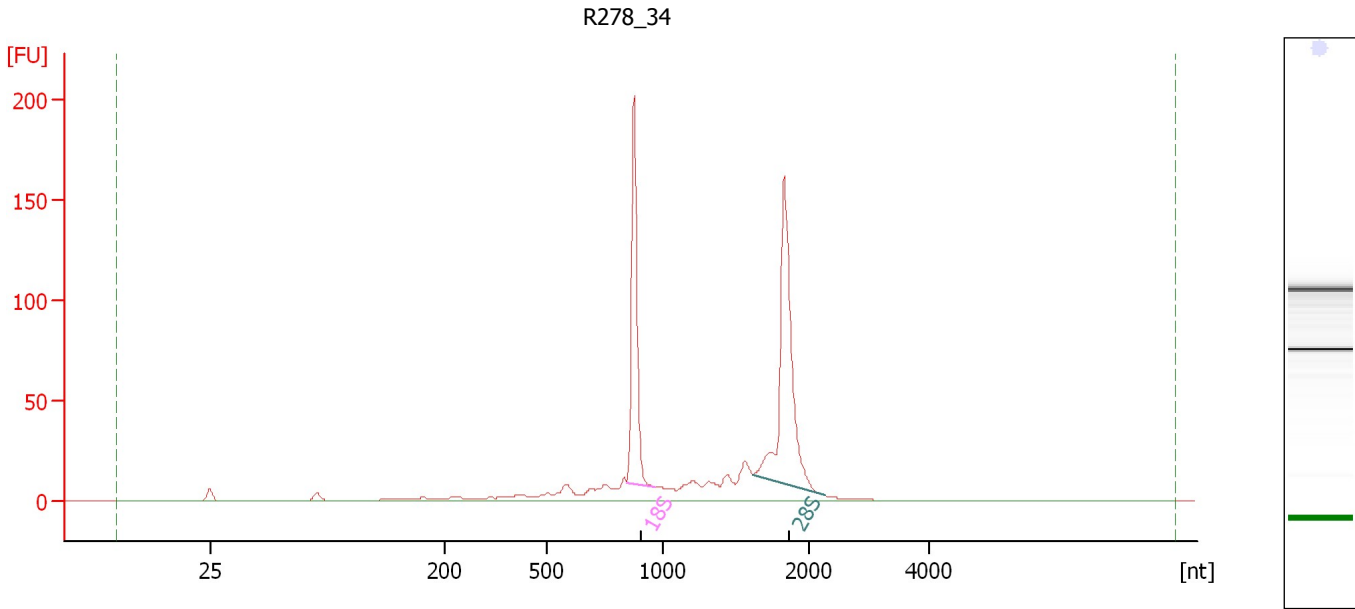
Fragment table for sample 9 : 179N_87

Name	Start Size [nt]	End Size [nt]	Area	% of total Area
18S	851	971	158.2	24.3
28S	1,794	2,214	171.3	26.3

Assay Class: Eukaryote Total RNA Nano
Data Path: C:\...ents and Settings\Bioanalyzer\2012-07-03\2012-07-03_006.xad

Created: 7/3/2012 3:11:09 PM
Modified: 7/3/2012 3:34:59 PM

Electropherogram Summary Continued ...



Overall Results for sample 10 : R278 34

RNA Area:	593.3	RNA Integrity Number (RIN):	8.9 (B.02.08)
RNA Concentration:	1,465 ng/μl	Result Flagging Color:	
rRNA Ratio [28s / 18s]:	1.3	Result Flagging Label:	RIN: 8.90

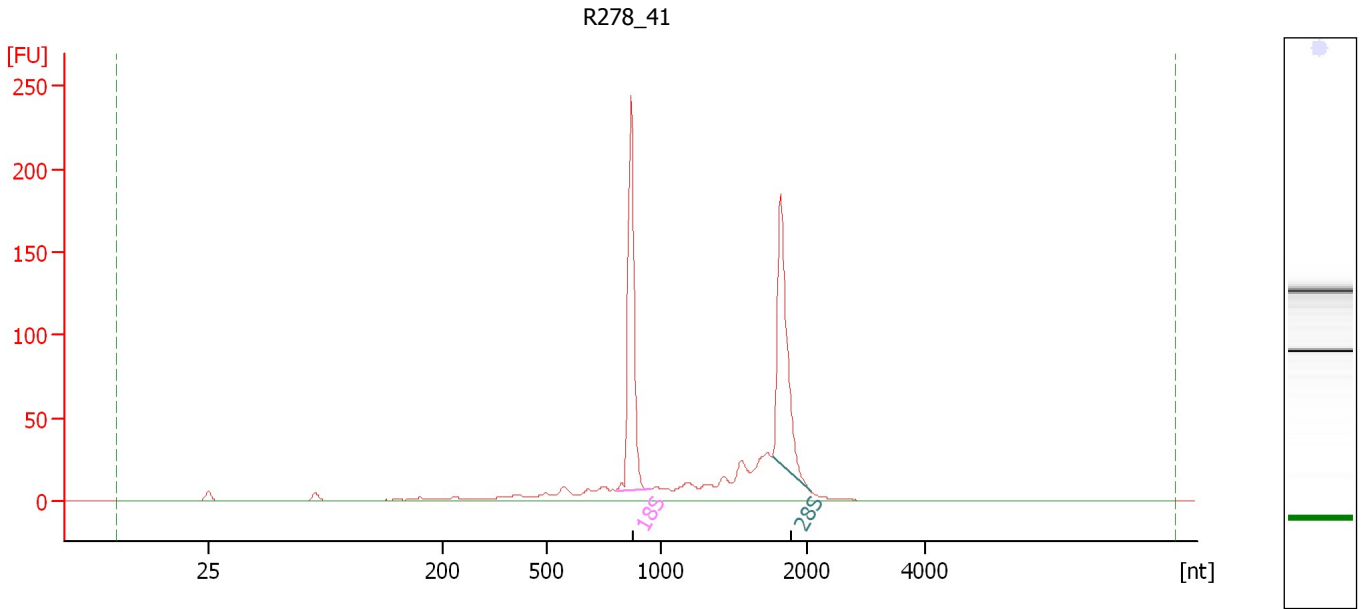
Fragment table for sample 10 : R278 34

Name	Start Size [nt]	End Size [nt]	Area	% of total Area
18S	846	961	137.4	23.2
28S	1,620	2,271	183.0	30.8

Assay Class: Eukaryote Total RNA Nano
Data Path: C:\...ents and Settings\Bioanalyzer\2012-07-03\2012-07-03_006.xad

Created: 7/3/2012 3:11:09 PM
Modified: 7/3/2012 3:34:59 PM

Electropherogram Summary Continued ...



Overall Results for sample 11 : R278 41

RNA Area:	696.9	RNA Integrity Number (RIN):	8.9 (B.02.08)
RNA Concentration:	1,721 ng/μl	Result Flagging Color:	
rRNA Ratio [28s / 18s]:	1.0	Result Flagging Label:	RIN: 8.90

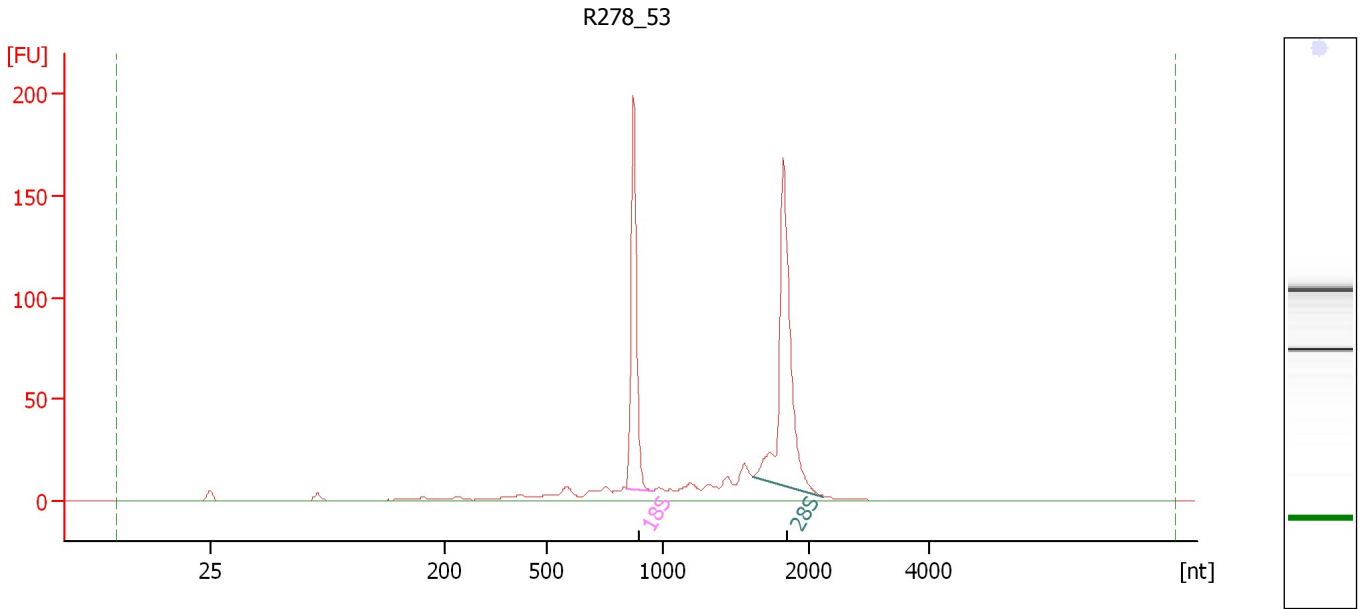
Fragment table for sample 11 : R278 41

Name	Start Size [nt]	End Size [nt]	Area	% of total Area
18S	803	956	171.4	24.6
28S	1,759	2,059	168.1	24.1

Assay Class: Eukaryote Total RNA Nano
Data Path: C:\...ents and Settings\Bioanalyzer\2012-07-03\2012-07-03_006.xad

Created: 7/3/2012 3:11:09 PM
Modified: 7/3/2012 3:34:59 PM

Electropherogram Summary Continued ...



Overall Results for sample 12 : R278 53

RNA Area:	561.7	RNA Integrity Number (RIN):	9.1 (B.02.08)
RNA Concentration:	1,387 ng/μl	Result Flagging Color:	
rRNA Ratio [28s / 18s]:	1.4	Result Flagging Label:	RIN: 9.10

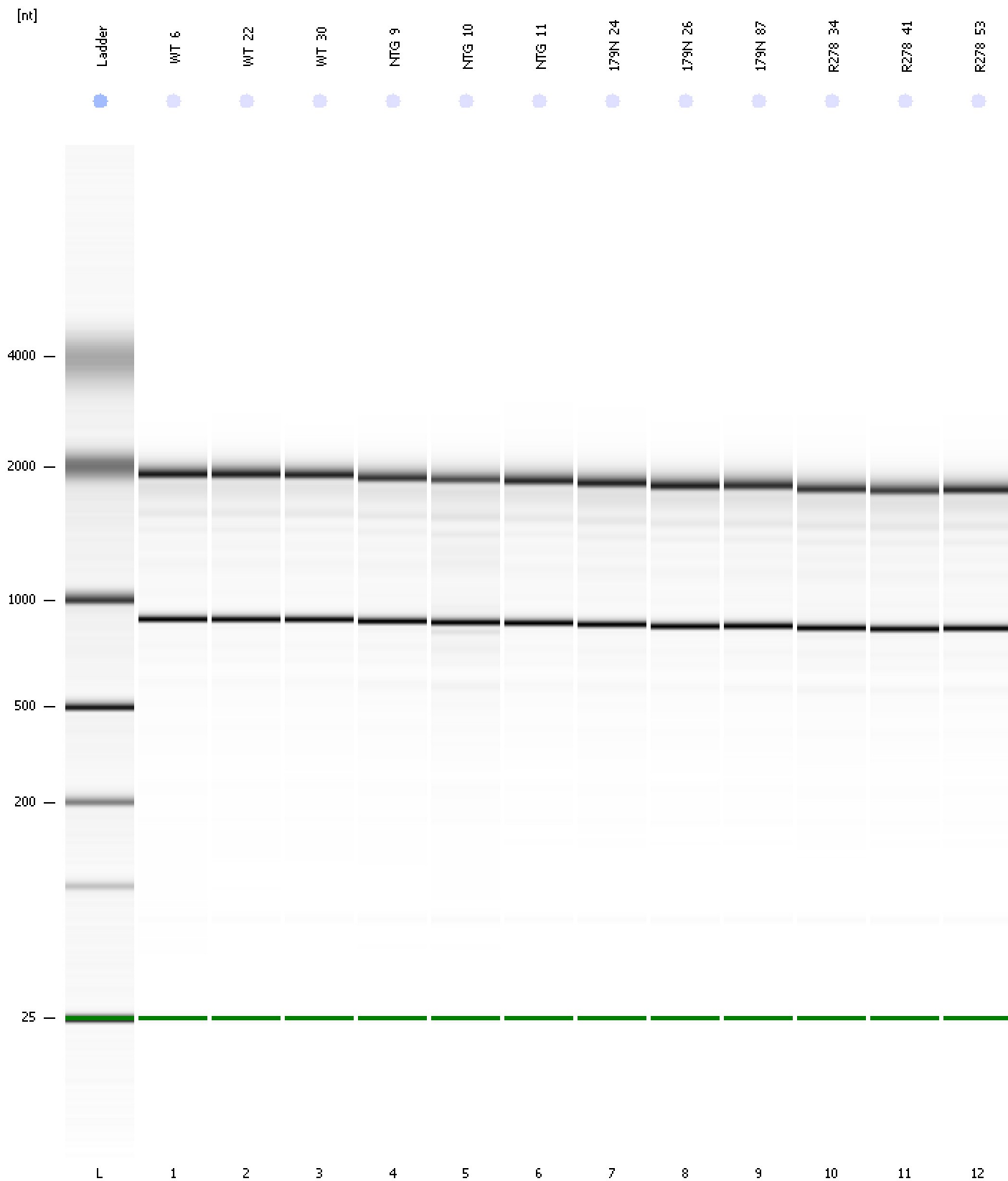
Fragment table for sample 12 : R278 53

Name	Start Size [nt]	End Size [nt]	Area	% of total Area
18S	841	956	136.9	24.4
28S	1,620	2,235	185.1	32.9

Assay Class: Eukaryote Total RNA Nano
Data Path: C:\...ents and Settings\Bioanalyzer\2012-07-03\2012-07-03_006.xad

Created: 7/3/2012 3:11:09 PM
Modified: 7/3/2012 3:34:59 PM

Gel Image



Assay Class: Eukaryote Total RNA Nano Created: 7/3/2012 3:11:09 PM
 Data Path: C:\...ents and Settings\Bioanalyzer\2012-07-03\2012-07-03_006.xad Modified: 7/3/2012 3:34:59 PM

Run Logbook

Description	Number	Source	Category	Sub Category	Time	Time Zone	User	Host
Run ended on port 1 (Number of wells acquired: 13)		Instrument	Run		7/3/2012 3:34:57 PM	(GMT --07:00) Pacific Standard Time	UC Davis	D8XSMGH1
Run started on port 1 (File: C:\Documents and Settings\Bioanalyzer\2012-07-03\2012-07-03_006.xad)		Instrument	Run		7/3/2012 3:11:15 PM	(GMT --07:00) Pacific Standard Time	UC Davis	D8XSMGH1
Product Number : G2938B		Instrument	Run		7/3/2012 3:11:15 PM	(GMT --07:00) Pacific Standard Time	UC Davis	D8XSMGH1
Name :		Instrument	Run		7/3/2012 3:11:15 PM	(GMT --07:00) Pacific Standard Time	UC Davis	D8XSMGH1
Vendor : Agilent Technologies		Instrument	Run		7/3/2012 3:11:15 PM	(GMT --07:00) Pacific Standard Time	UC Davis	D8XSMGH1
Serial# : DE13701086		Instrument	Run		7/3/2012 3:11:15 PM	(GMT --07:00) Pacific Standard Time	UC Davis	D8XSMGH1
Firmware : C.01.069		Instrument	Run		7/3/2012 3:11:15 PM	(GMT --07:00) Pacific Standard Time	UC Davis	D8XSMGH1
Cartridge : Electrode		Instrument	Run		7/3/2012 3:11:15 PM	(GMT --07:00) Pacific Standard Time	UC Davis	D8XSMGH1