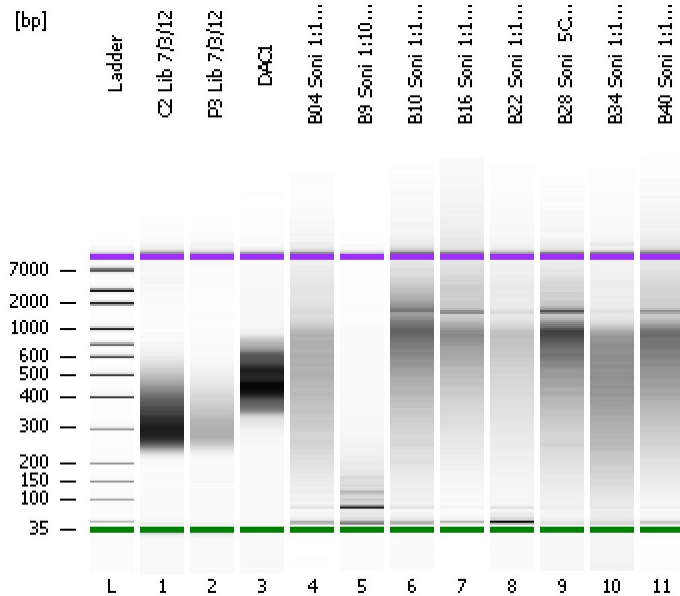


Assay Class: High Sensitivity DNA Assay  
Data Path: C:\...ents and Settings\Bioanalyzer\2012-07-04\2012-07-04\_002.xad

Created: 7/4/2012 4:59:35 PM  
Modified: 7/4/2012 5:42:34 PM

**Electrophoresis File Run Summary**



Instrument Information:

Instrument Name: DE13701086      Firmware: C.01.069  
Serial#: DE13701086      Type: G2938B

Assay Information:

Assay Origin Path: C:\Program Files\Agilent\2100 bioanalyzer\2100 expert\assays\dsDNA\High Sensitivity DNA.xsy  
Assay Class: High Sensitivity DNA Assay  
Version: 1.03  
Assay Comments: Copyright © 2003-2010 Agilent Technologies

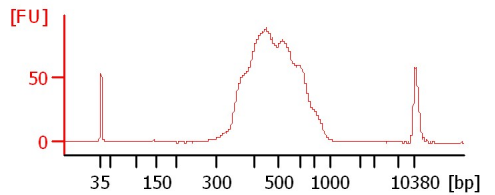
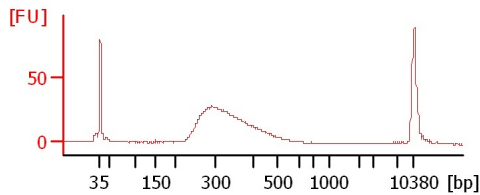
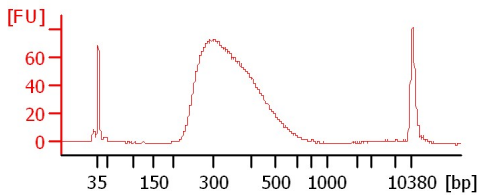
Chip Information:

Chip Lot #:   
Reagent Kit Lot #:   
Chip Comments:

**C2 Lib 7/3/12**

**P3 Lib 7/3/12**

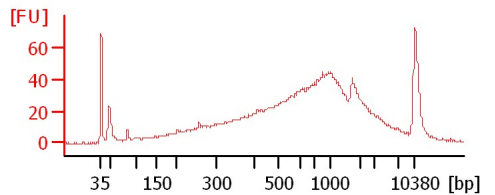
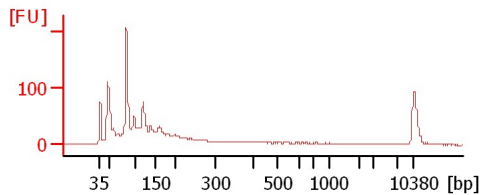
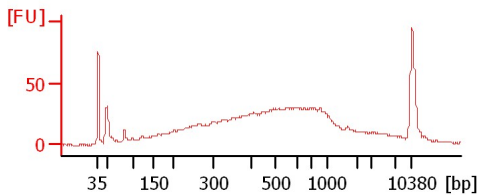
**DAC1**



**B04 Soni 1:10 5Cycles**

**B9 Soni 1:10 5Cycles**

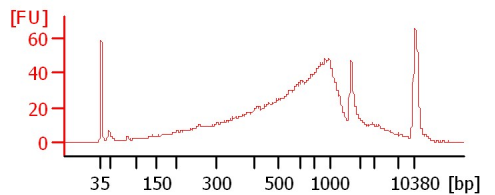
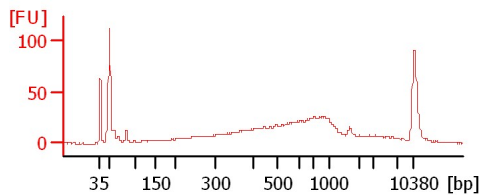
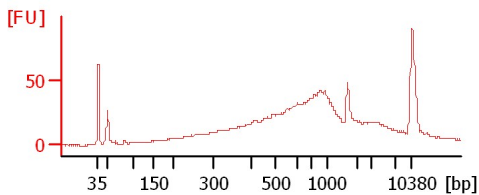
**B10 Soni 1:10 5Cycles**



**B16 Soni 1:10 5Cycles**

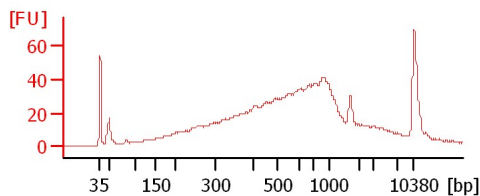
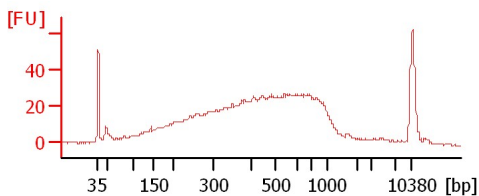
**B22 Soni 1:10 5Cycles**

**B28 Soni 5Cycles**



**B34 Soni 1:10 5Cycles**

**B40 Soni 1:10 5Cycles**



Assay Class: High Sensitivity DNA Assay  
Data Path: C:\...ents and Settings\Bioanalyzer\2012-07-04\2012-07-04\_002.xad

Created: 7/4/2012 4:59:35 PM  
Modified: 7/4/2012 5:42:34 PM

**Electrophoresis File Run Summary (Chip Summary)**

Sample Name	Sample Comment	Rest. Digest	Status	Observation	Result Label	Result Color
C2 Lib 7/3/12		<input type="checkbox"/>	✓			
P3 Lib 7/3/12		<input type="checkbox"/>	✓			
DAC1		<input type="checkbox"/>	✓			
B04 Soni 1:10 5Cycles		<input type="checkbox"/>	✓			
B9 Soni 1:10 5Cycles		<input type="checkbox"/>	✓			
B10 Soni 1:10 5Cycles		<input type="checkbox"/>	✓			
B16 Soni 1:10 5Cycles		<input type="checkbox"/>	✓			
B22 Soni 1:10 5Cycles		<input type="checkbox"/>	✓			
B28 Soni 5Cycles		<input type="checkbox"/>	✓			
B34 Soni 1:10 5Cycles		<input type="checkbox"/>	✓			
B40 Soni 1:10 5Cycles		<input type="checkbox"/>	✓			
Ladder		<input type="checkbox"/>	✓			

**Chip Lot #**

**Reagent Kit Lot #**

**Chip Comments :**

Assay Class: High Sensitivity DNA Assay  
Data Path: C:\...ents and Settings\Bioanalyzer\2012-07-04\2012-07-04\_002.xad

Created: 7/4/2012 4:59:35 PM  
Modified: 7/4/2012 5:42:34 PM

**Electrophoresis Assay Details**

**General Analysis Settings**

Number of Available Sample and Ladder Wells (Max.) : 12  
Minimum Visible Range [s] : 32  
Maximum Visible Range [s] : 138  
Start Analysis Time Range [s] : 33  
End Analysis Time Range [s] : 137.5  
Ladder Concentration [pg/μl] : 1950  
Uses Standard Area for Ladder Fragments  
Lower Marker Concentration [pg/μl] : 125  
Upper Marker Concentration [pg/μl] : 75  
Used Upper Marker for Quantitation  
Standard Curve Fit is Point to Point  
Show Data Aligned to Lower and Upper Marker

**Integrator Settings**

Integration Start Time [s] : 33.05  
Integration End Time [s] : 137  
Slope Threshold : 0.8  
Height Threshold [FU] : 5  
Area Threshold : 0.1  
Width Threshold [s] : 0.6  
Baseline Plateau [s] : 0.5

**Filter Settings**

Filter Width [s] : 0.5  
Polynomial Order : 4

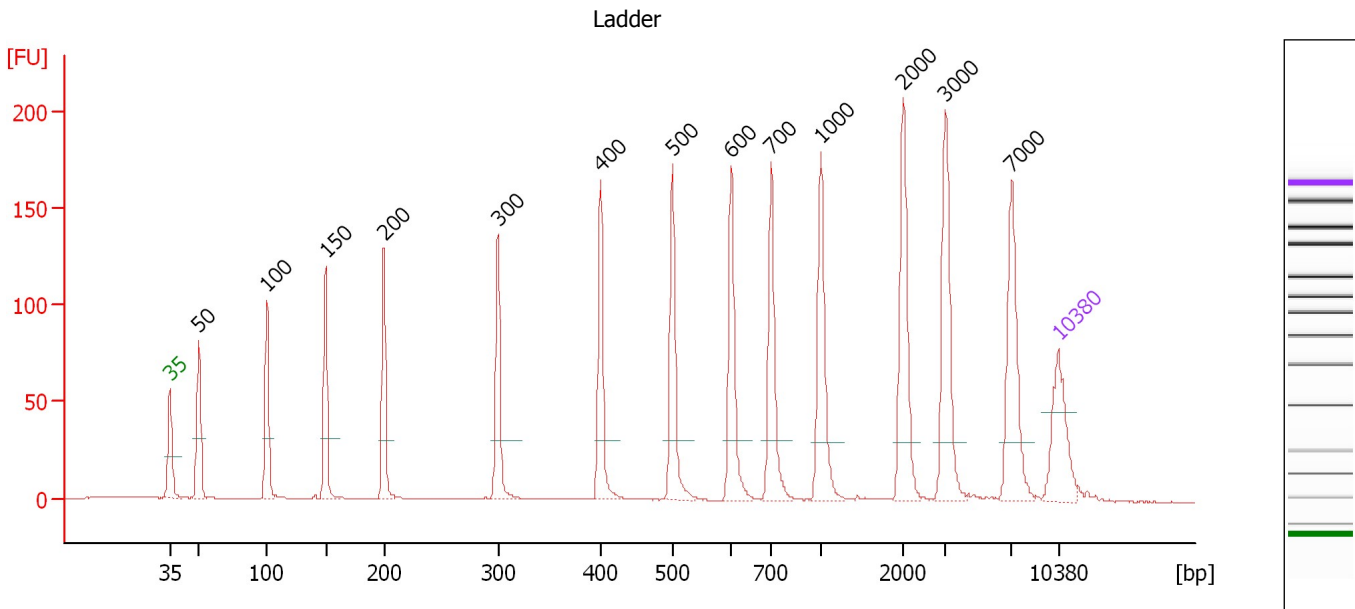
**Ladder**

Ladder Peak	Size	Area
1	35	160
2	50	210
3	100	208
4	150	221
5	200	242
6	300	270
7	400	305
8	500	306
9	600	336
10	700	321
11	1000	366
12	2000	413
13	3000	411
14	7000	400
15	10380	214

Assay Class: High Sensitivity DNA Assay  
 Data Path: C:\...ents and Settings\Bioanalyzer\2012-07-04\2012-07-04\_002.xad

Created: 7/4/2012 4:59:35 PM  
 Modified: 7/4/2012 5:42:34 PM

**Electropherogram Summary**



**Overall Results for Ladder**

Noise: 0.1

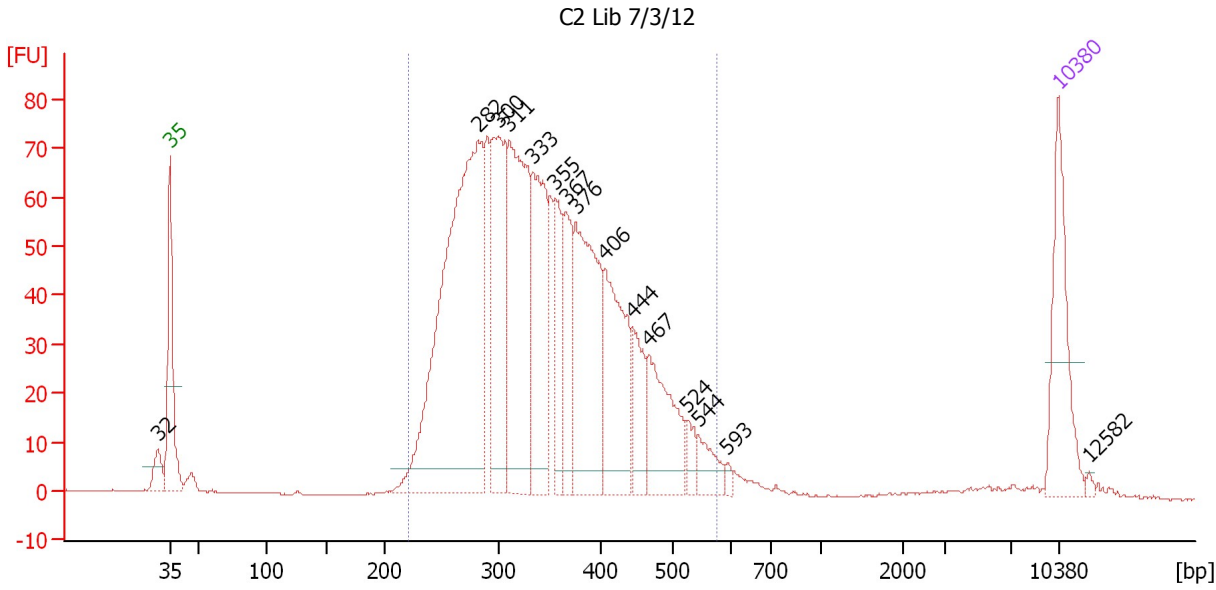
**Peak table for Ladder**

Peak	Size [bp]	Conc. [pg/μl]	Molarity [pmol/l]	Observations
1	35	125.00	5,411.3	Lower Marker
2	50	150.00	4,545.5	Ladder Peak
3	100	150.00	2,272.7	Ladder Peak
4	150	150.00	1,515.2	Ladder Peak
5	200	150.00	1,136.4	Ladder Peak
6	300	150.00	757.6	Ladder Peak
7	400	150.00	568.2	Ladder Peak
8	500	150.00	454.5	Ladder Peak
9	600	150.00	378.8	Ladder Peak
10	700	150.00	324.7	Ladder Peak
11	1,000	150.00	227.3	Ladder Peak
12	2,000	150.00	113.6	Ladder Peak
13	3,000	150.00	75.8	Ladder Peak
14	7,000	150.00	32.5	Ladder Peak
15	10,380	75.00	10.9	Upper Marker

Assay Class: High Sensitivity DNA Assay  
 Data Path: C:\...ents and Settings\Bioanalyzer\2012-07-04\2012-07-04\_002.xad

Created: 7/4/2012 4:59:35 PM  
 Modified: 7/4/2012 5:42:34 PM

**Electropherogram Summary Continued ...**



**Overall Results for sample 1 : C2 Lib 7/3/12**

Number of peaks found: 15      Corr. Area 1: 1,557.2  
 Noise: 0.1

**Peak table for sample 1 : C2 Lib 7/3/12**

Peak	Size [bp]	Conc. [pg/μl]	Molarity [pmol/l]	Observations
1	32	0.00	0.0	
2	35	125.00	5,411.3	Lower Marker
3	282	534.07	2,868.6	
4	300	181.68	917.9	
5	311	237.27	1,156.4	
6	333	152.87	695.7	
7	355	71.55	305.0	
8	367	74.94	309.8	
9	376	187.13	754.3	
10	406	136.12	508.5	
11	444	51.52	175.8	
12	467	96.60	313.5	
13	524	16.21	46.9	
14	544	25.86	72.0	
15	593	5.02	12.8	
16	10,380	75.00	10.9	Upper Marker
17	12,582	0.00	0.0	

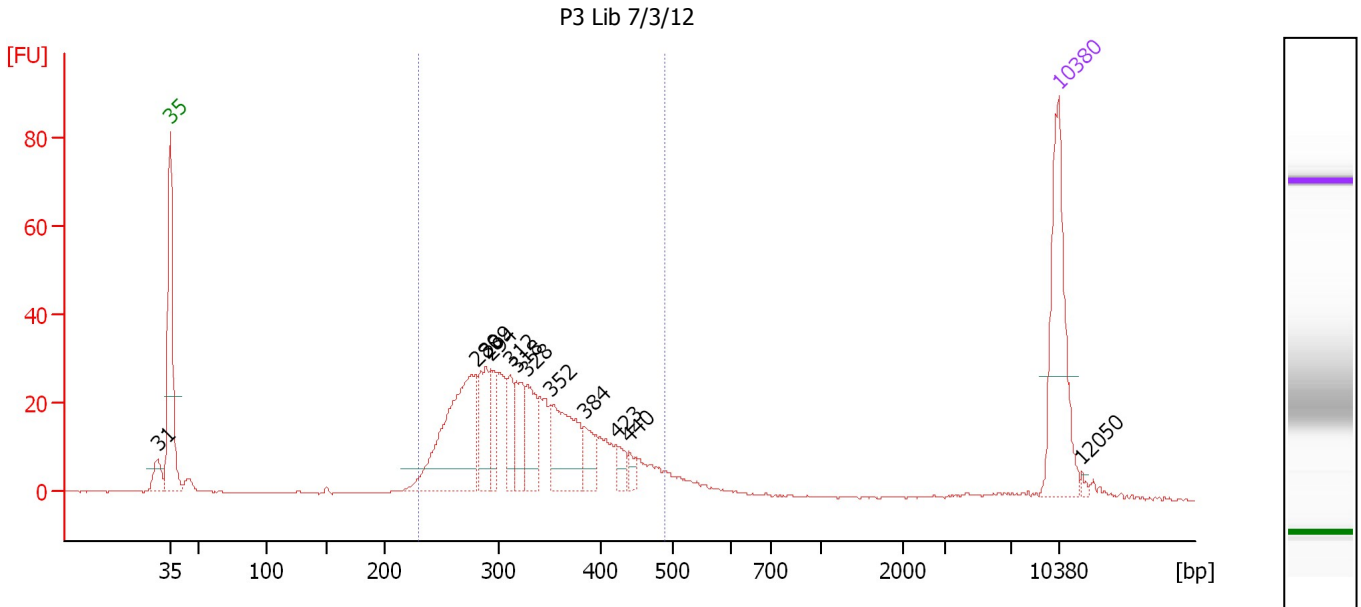
**Region table for sample 1 : C2 Lib 7/3/12**

From [bp]	To [bp]	Average Size [bp]	Molarity [pmol/l]	Conc. [pg/μl]	Corr. Area	% of Total	Size distribution in CV [%]	Color
221	576	347	8,873.9	1,912.06	1,557.2	95	21.5	Blue

Assay Class: High Sensitivity DNA Assay  
 Data Path: C:\...ents and Settings\Bioanalyzer\2012-07-04\2012-07-04\_002.xad

Created: 7/4/2012 4:59:35 PM  
 Modified: 7/4/2012 5:42:34 PM

**Electropherogram Summary Continued ...**



**Overall Results for sample 2 : P3 Lib 7/3/12**

Number of peaks found: 12                      Corr. Area 1: 498.2  
 Noise: 0.2

**Peak table for sample 2 : P3 Lib 7/3/12**

Peak	Size [bp]	Conc. [pg/μl]	Molarity [pmol/l]	Observations
1	31	0.00	0.0	
2	35	125.00	5,411.3	Lower Marker
3	280	145.72	787.2	
4	289	44.63	233.9	
5	294	28.71	148.2	
6	312	27.76	135.0	
7	318	29.83	142.0	
8	328	37.32	172.1	
9	352	68.51	295.3	
10	384	20.13	79.4	
11	423	10.90	39.1	
12	440	6.69	23.1	
13	10,380	75.00	10.9	Upper Marker
14	12,050	0.00	0.0	

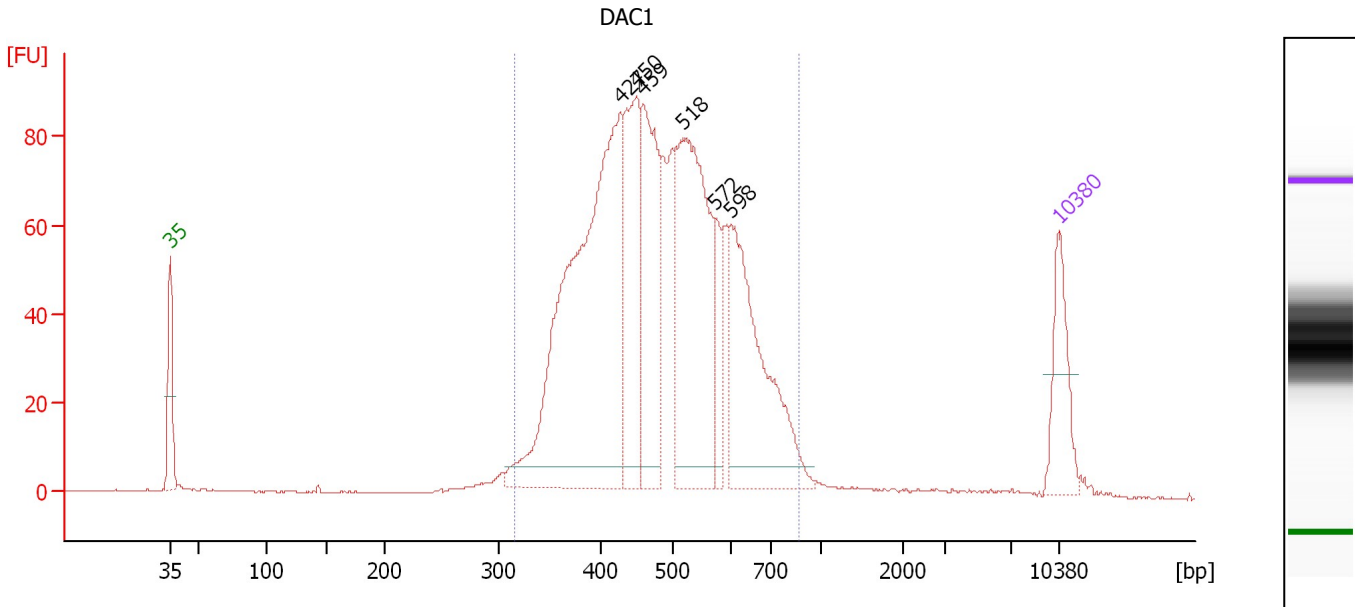
**Region table for sample 2 : P3 Lib 7/3/12**

From [bp]	To [bp]	Average Size [bp]	Molarity [pmol/l]	Conc. [pg/μl]	Corr. Area	% of Total	Size distribution in CV [%]	Color
230	490	330	2,692.7	562.91	498.2	87	17.9	Blue

Assay Class: High Sensitivity DNA Assay  
 Data Path: C:\...ents and Settings\Bioanalyzer\2012-07-04\2012-07-04\_002.xad

Created: 7/4/2012 4:59:35 PM  
 Modified: 7/4/2012 5:42:34 PM

**Electropherogram Summary Continued ...**



**Overall Results for sample 3 : DAC1**

Number of peaks found: 6                      Corr. Area 1: 1,558.4  
 Noise: 0.1

**Peak table for sample 3 : DAC1**

Peak	Size [bp]	Conc. [pg/μl]	Molarity [pmol/l]	Observations
1	35	125.00	5,411.3	Lower Marker
2	427	759.31	2,692.9	
3	450	233.48	785.6	
4	459	239.56	791.6	
5	518	405.01	1,185.5	
6	572	60.72	160.9	
7	598	296.03	750.4	
8	10,380	75.00	10.9	Upper Marker

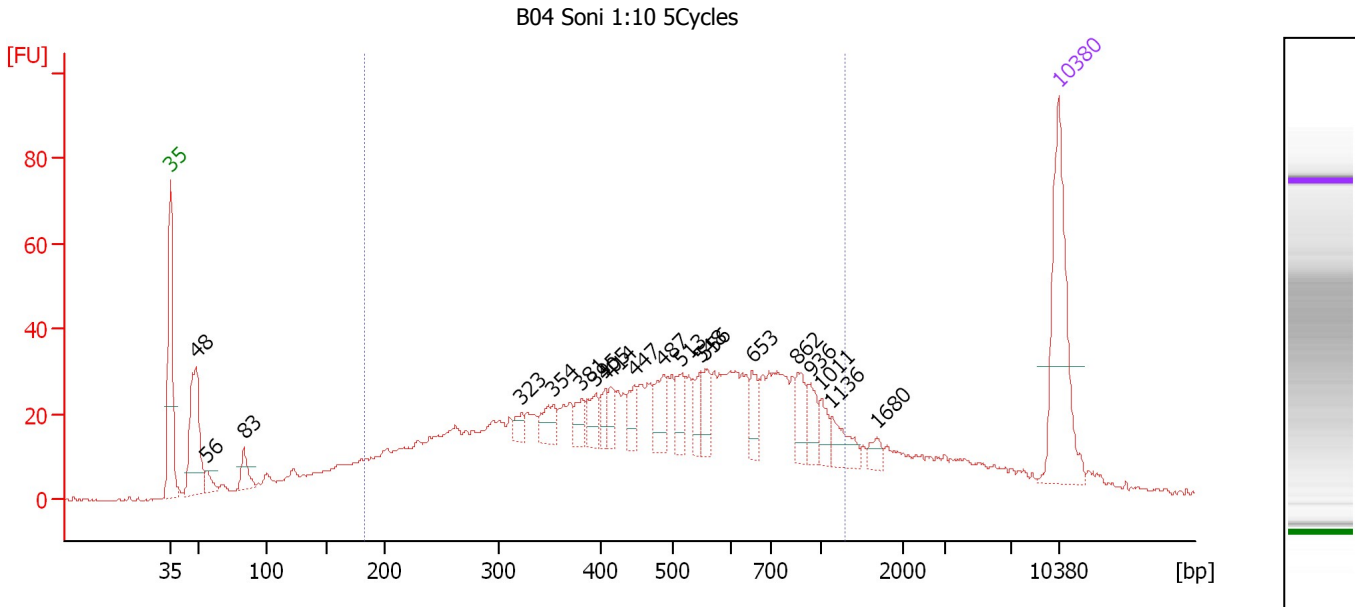
**Region table for sample 3 : DAC1**

From [bp]	To [bp]	Average Size [bp]	Molarity [pmol/l]	Conc. [pg/μl]	Corr. Area	% of Total	Size distribution in CV [%]	Color
317	866	492	7,475.1	2,297.78	1,558.4	95	20.8	Blue

Assay Class: High Sensitivity DNA Assay  
 Data Path: C:\...ents and Settings\Bioanalyzer\2012-07-04\2012-07-04\_002.xad

Created: 7/4/2012 4:59:35 PM  
 Modified: 7/4/2012 5:42:34 PM

**Electropherogram Summary Continued ...**



**Overall Results for sample 4 : B04 Soni 1:10 5Cycles**

Number of peaks found: 20                      Corr. Area 1: 1,093.0  
 Noise: 0.4

**Peak table for sample 4 : B04 Soni 1:10 5Cycles**

Peak	Size [bp]	Conc. [pg/μl]	Molarity [pmol/l]	Observations
1	35	125.00	5,411.3	Lower Marker
2	48	91.19	2,852.3	
3	56	10.91	294.0	
4	83	17.92	328.0	
5	323	8.28	38.9	
6	354	18.68	80.0	
7	381	13.53	53.7	
8	395	16.76	64.3	
9	405	11.04	41.2	
10	414	11.67	42.7	
11	447	15.16	51.4	
12	487	23.95	74.5	
13	513	18.44	54.4	
14	548	13.55	37.4	
15	556	16.51	44.9	
16	653	16.44	38.1	
17	862	18.25	32.1	
18	936	15.01	24.3	
19	1,011	11.37	17.0	
20	1,136	17.39	23.2	
21	1,680	6.44	5.8	
22	10,380	75.00	10.9	Upper Marker

**Region table for sample 4 : B04 Soni 1:10 5Cycles**

From [bp]	To [bp]	Average Size [bp]	Molarity [pmol/l]	Conc. [pg/μl]	Corr. Area	% of Total	Size distribution in CV [%]	Color
184	1,303	514	4,435.9	1,134.53	1,093.0	74	45.2	Blue

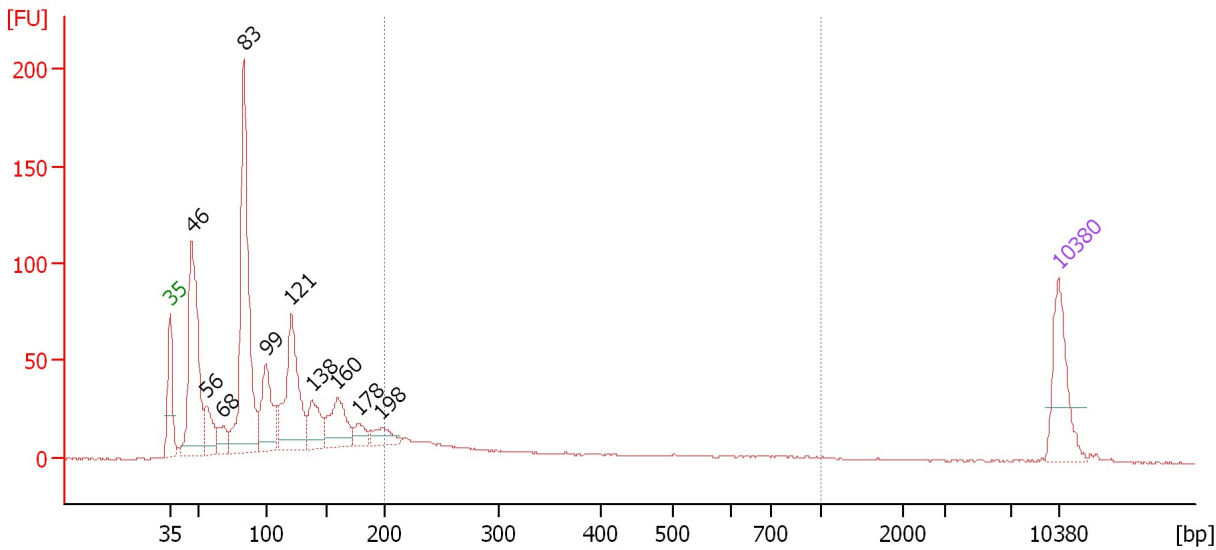


Assay Class: High Sensitivity DNA Assay  
 Data Path: C:\...ents and Settings\Bioanalyzer\2012-07-04\2012-07-04\_002.xad

Created: 7/4/2012 4:59:35 PM  
 Modified: 7/4/2012 5:42:34 PM

**Electropherogram Summary Continued ...**

B9 Soni 1:10 5Cycles



**Overall Results for sample 5 : B9 Soni 1:10 5Cycles**

Number of peaks found: 10                      Corr. Area 1: 215.8  
 Noise: 0.2

**Peak table for sample 5 : B9 Soni 1:10 5Cycles**

Peak	Size [bp]	Conc. [pg/μl]	Molarity [pmol/l]	Observations
1	35	125.00	5,411.3	Lower Marker
2	46	321.54	10,499.3	
3	56	65.05	1,765.2	
4	68	35.93	800.8	
5	83	441.23	8,069.3	
6	99	129.63	1,982.8	
7	121	219.46	2,759.0	
8	138	71.07	777.8	
9	160	96.38	912.2	
10	178	24.78	211.0	
11	198	32.66	250.5	
12	10,380	75.00	10.9	Upper Marker

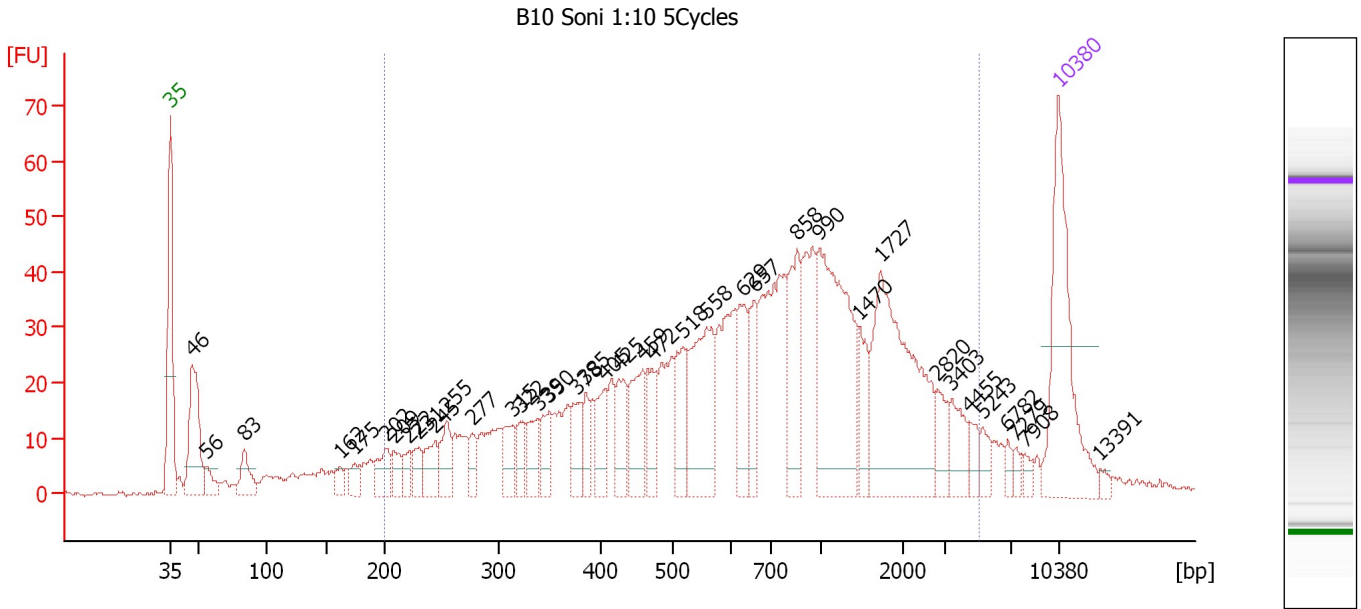
**Region table for sample 5 : B9 Soni 1:10 5Cycles**

From [bp]	To [bp]	Average Size [bp]	Molarity [pmol/l]	Conc. [pg/μl]	Corr. Area	% of Total	Size distribution in CV [%]	Color
200	1,000	365	1,218.7	233.79	215.8	15	47.9	Blue

Assay Class: High Sensitivity DNA Assay  
 Data Path: C:\...ents and Settings\Bioanalyzer\2012-07-04\2012-07-04\_002.xad

Created: 7/4/2012 4:59:35 PM  
 Modified: 7/4/2012 5:42:34 PM

**Electropherogram Summary Continued ...**



**Overall Results for sample 6 : B10 Soni 1:10 5Cycles**

Number of peaks found: 38                      Corr. Area 1: 1,282.2  
 Noise: 0.5

**Peak table for sample 6 : B10 Soni 1:10 5Cycles**

Peak	Size [bp]	Conc. [pg/μl]	Molarity [pmol/l]	Observations
1	35	125.00	5,411.3	Lower Marker
2	46	74.95	2,442.2	
3	56	13.46	366.9	
4	83	22.62	411.5	
5	162	8.84	82.5	
6	175	11.48	99.7	
7	202	20.62	154.4	
8	209	13.74	99.4	
9	222	10.32	70.4	
10	231	13.42	88.2	
11	245	20.54	127.1	
12	255	22.65	134.8	
13	277	12.53	68.6	
14	315	19.31	92.9	
15	322	13.71	64.5	
16	339	21.87	97.8	
17	350	19.64	85.0	
18	378	19.86	79.7	
19	385	15.79	62.1	
20	405	20.81	77.8	
21	425	25.57	91.2	
22	459	35.42	117.0	
23	472	21.36	68.6	
24	518	31.27	91.4	
25	558	72.36	196.3	
26	629	34.52	83.1	

Assay Class: High Sensitivity DNA Assay  
 Data Path: C:\...ents and Settings\Bioanalyzer\2012-07-04\2012-07-04\_002.xad

Created: 7/4/2012 4:59:35 PM  
 Modified: 7/4/2012 5:42:34 PM

**Electropherogram Summary Continued ...**

**... Peak table for sample 6 : B10 Soni 1:10 5Cycles**

Peak	Size [bp]	Conc. [pg/µl]	Molarity [pmol/l]	Observations
27	657	25.76	59.4	
28	858	45.14	79.7	
29	990	114.15	174.7	
30	1,470	18.72	19.3	
31	1,727	117.33	103.0	
32	2,820	14.01	7.5	
33	3,403	17.60	7.8	
34	4,455	8.36	2.8	
35	5,243	7.37	2.1	
36	6,782	4.33	1.0	
37	7,279	4.18	0.9	
38	7,908	4.57	0.9	
39	10,380	75.00	10.9	Upper Marker
40	13,391	0.00	0.0	

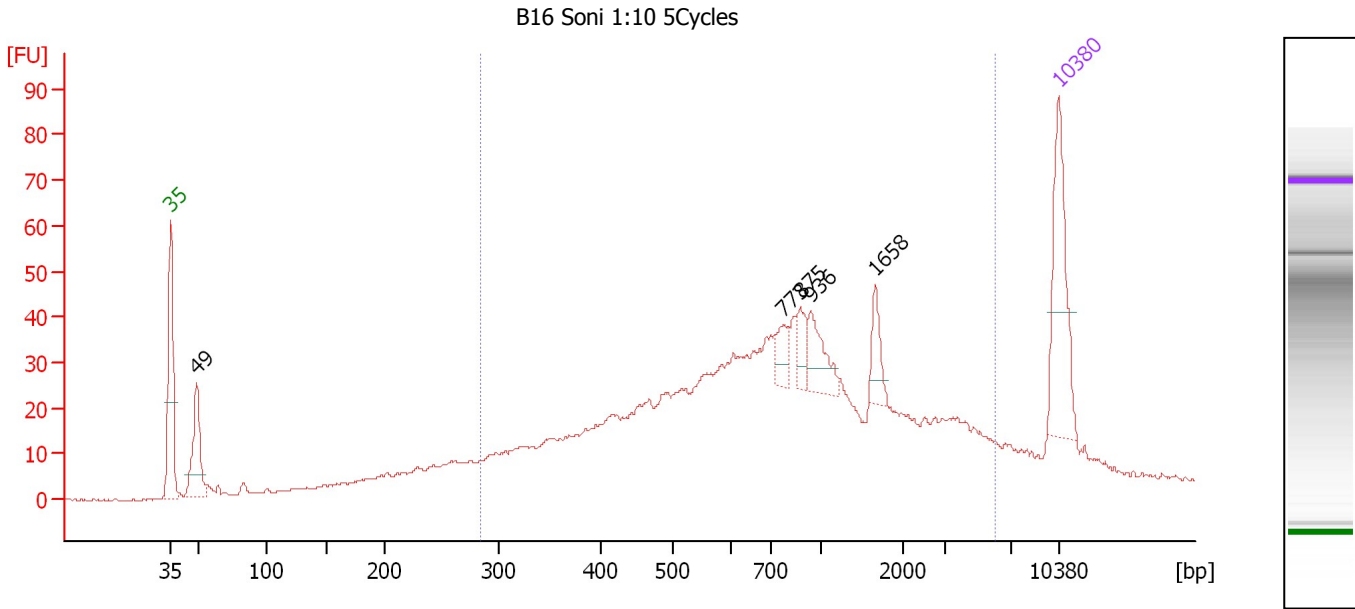
**Region table for sample 6 : B10 Soni 1:10 5Cycles**

From [bp]	To [bp]	Average Size [bp]	Molarity [pmol/l]	Conc. [pg/µl]	Corr. Area	% of Total	Size distribution in CV [%]	Color
200	5,065	1,001	3,564.8	1,224.32	1,282.2	84	85.0	<span style="color: blue;">■</span>

Assay Class: High Sensitivity DNA Assay  
 Data Path: C:\...ents and Settings\Bioanalyzer\2012-07-04\2012-07-04\_002.xad

Created: 7/4/2012 4:59:35 PM  
 Modified: 7/4/2012 5:42:34 PM

**Electropherogram Summary Continued ...**



**Overall Results for sample 7 : B16 Soni 1:10 5Cycles**

Number of peaks found: 5                      Corr. Area 1: 993.4  
 Noise: 0.3

**Peak table for sample 7 : B16 Soni 1:10 5Cycles**

Peak	Size [bp]	Conc. [pg/μl]	Molarity [pmol/l]	Observations
1	35	125.00	5,411.3	Lower Marker
2	49	75.78	2,345.8	
3	773	19.70	38.6	
4	875	19.97	34.6	
5	936	34.02	55.0	
6	1,658	20.97	19.2	
7	10,380	75.00	10.9	Upper Marker

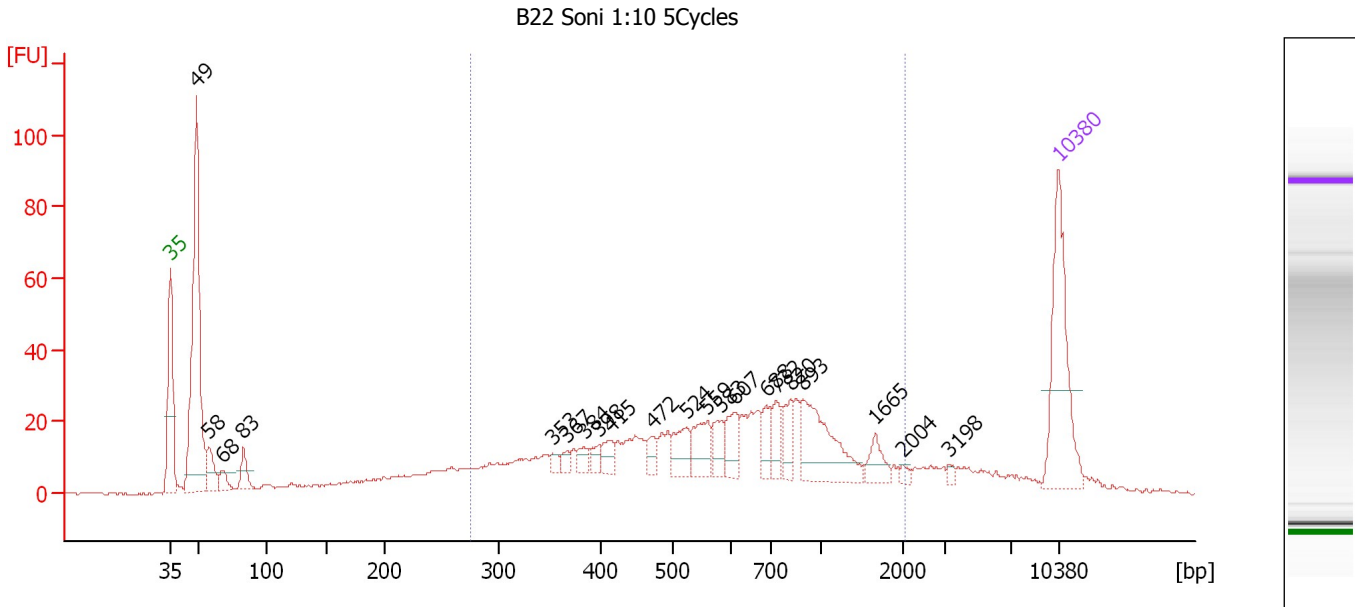
**Region table for sample 7 : B16 Soni 1:10 5Cycles**

From [bp]	To [bp]	Average Size [bp]	Molarity [pmol/l]	Conc. [pg/μl]	Corr. Area	% of Total	Size distribution in CV [%]	Color
284	6,011	1,132	3,108.1	1,249.78	993.4	78	95.2	Blue

Assay Class: High Sensitivity DNA Assay  
 Data Path: C:\...ents and Settings\Bioanalyzer\2012-07-04\2012-07-04\_002.xad

Created: 7/4/2012 4:59:35 PM  
 Modified: 7/4/2012 5:42:34 PM

**Electropherogram Summary Continued ...**



**Overall Results for sample 8 : B22 Soni 1:10 5Cycles**

Number of peaks found: 21                      Corr. Area 1: 658.8  
 Noise: 0.4

**Peak table for sample 8 : B22 Soni 1:10 5Cycles**

Peak	Size [bp]	Conc. [pg/μl]	Molarity [pmol/l]	Observations
1	35	125.00	5,411.3	Lower Marker
2	49	244.12	7,549.5	
3	58	25.03	656.0	
4	68	13.23	294.9	
5	83	19.46	356.5	
6	353	5.43	23.3	
7	367	6.37	26.3	
8	384	8.00	31.6	
9	398	7.63	29.1	
10	415	12.38	45.2	
11	472	11.84	38.0	
12	524	21.89	63.3	
13	559	27.89	75.7	
14	583	16.19	42.1	
15	607	21.33	53.3	
16	688	16.00	35.2	
17	732	17.66	36.5	
18	820	19.33	35.7	
19	893	63.38	107.6	
20	1,665	13.63	12.4	
21	2,004	3.22	2.4	
22	3,198	2.69	1.3	
23	10,380	75.00	10.9	Upper Marker

Assay Class: High Sensitivity DNA Assay  
Data Path: C:\...ents and Settings\Bioanalyzer\2012-07-04\2012-07-04\_002.xad

Created: 7/4/2012 4:59:35 PM  
Modified: 7/4/2012 5:42:34 PM

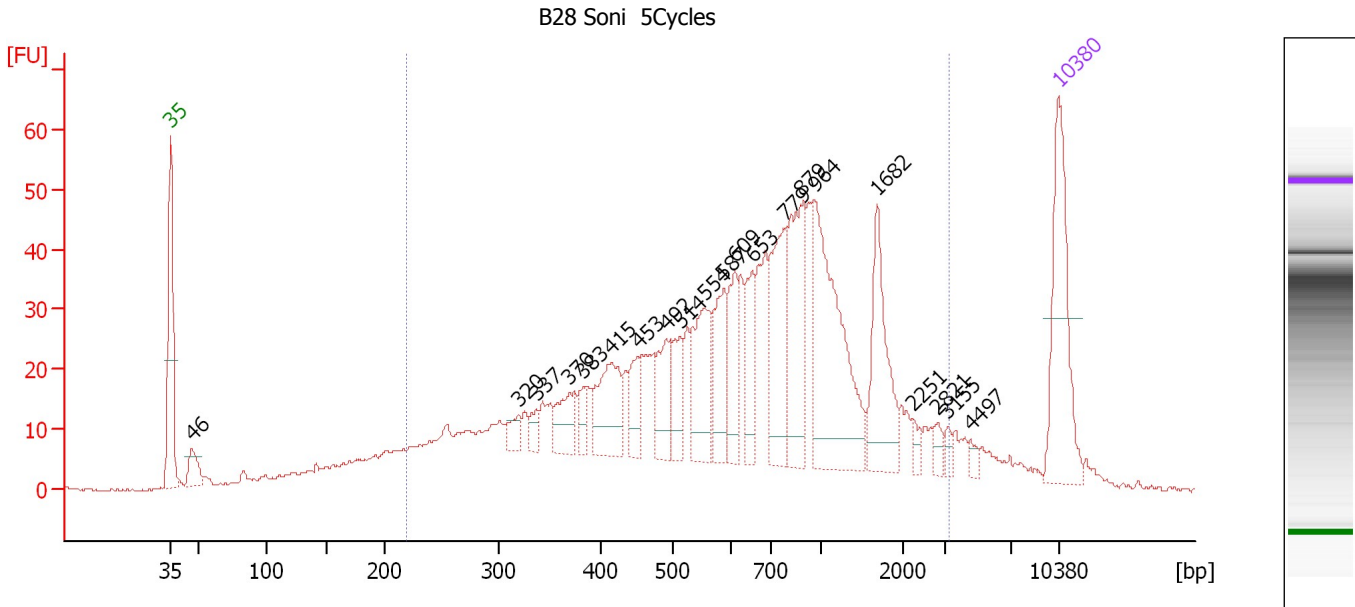
**Electropherogram Summary Continued ...****... Region table for sample 8 : B22 Soni 1:10 5Cycles**

<b>From [bp]</b>	<b>To [bp]</b>	<b>Average Size [bp]</b>	<b>Molarity [pmol/l]</b>	<b>Conc. [pg/μl]</b>	<b>Corr. Area</b>	<b>% of Total</b>	<b>Size distribution in CV [%]</b>	<b>Co lor</b>
277	2,029	696	1,866.0	639.57	658.8	60	54.1	■

Assay Class: High Sensitivity DNA Assay  
 Data Path: C:\...ents and Settings\Bioanalyzer\2012-07-04\2012-07-04\_002.xad

Created: 7/4/2012 4:59:35 PM  
 Modified: 7/4/2012 5:42:34 PM

**Electropherogram Summary Continued ...**



**Overall Results for sample 9 : B28 Soni 5Cycles**

Number of peaks found: 21                      Corr. Area 1: 1,148.0  
 Noise: 0.2

**Peak table for sample 9 : B28 Soni 5Cycles**

Peak	Size [bp]	Conc. [pg/μl]	Molarity [pmol/l]	Observations
1	35	125.00	5,411.3	Lower Marker
2	46	24.19	790.0	
3	320	12.68	60.0	
4	337	10.83	48.7	
5	370	29.72	121.8	
6	383	14.29	56.5	
7	415	57.26	209.0	
8	453	28.95	96.8	
9	492	37.66	116.0	
10	514	32.82	96.8	
11	554	58.99	161.4	
12	587	46.02	118.8	
13	609	37.35	92.9	
14	653	33.79	78.4	
15	779	77.94	151.6	
16	879	77.42	133.4	
17	964	138.48	217.7	
18	1,682	63.01	56.8	
19	2,251	5.74	3.9	
20	2,821	5.95	3.2	
21	3,155	4.86	2.3	
22	4,497	4.38	1.5	
23	10,380	75.00	10.9	Upper Marker

Assay Class: High Sensitivity DNA Assay  
Data Path: C:\...ents and Settings\Bioanalyzer\2012-07-04\2012-07-04\_002.xad

Created: 7/4/2012 4:59:35 PM  
Modified: 7/4/2012 5:42:34 PM

**Electropherogram Summary Continued ...**

... Region table for sample 9 : B28 Soni 5Cycles

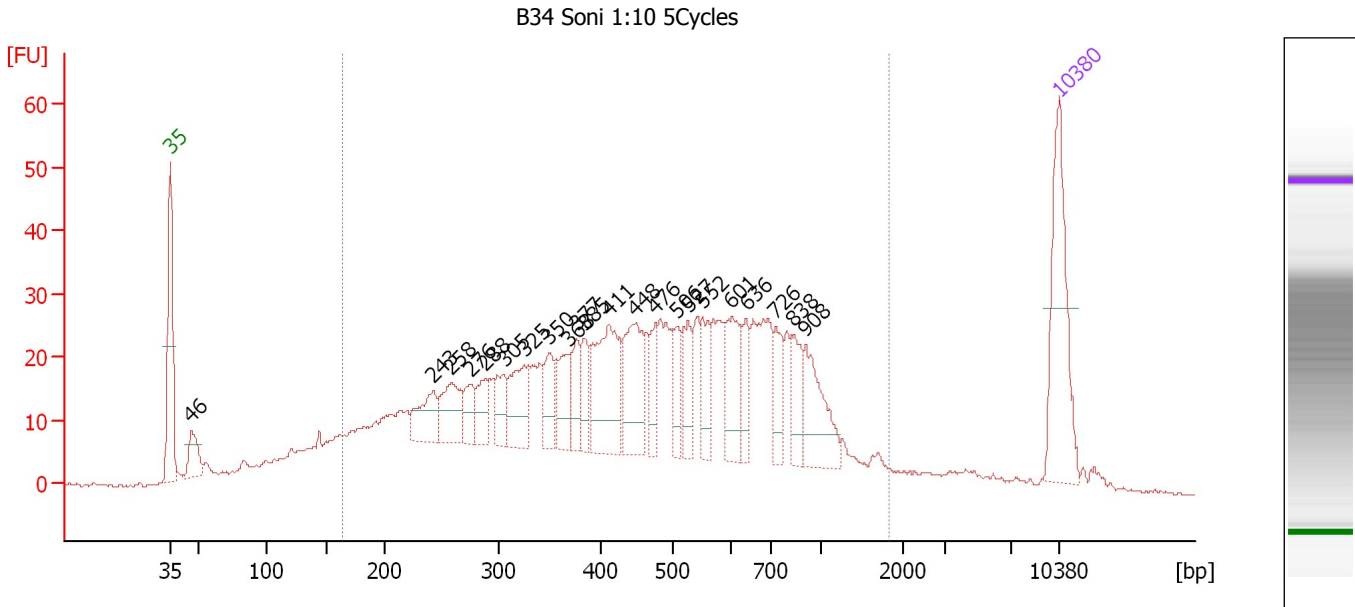
From [bp]	To [bp]	Average Size [bp]	Molarity [pmol/l]	Conc. [pg/μl]	Corr. Area	% of Total	Size distribution in CV [%]	Color
219	3,237	812	4,354.2	1,480.86	1,148.0	86	67.9	■



Assay Class: High Sensitivity DNA Assay  
 Data Path: C:\...ents and Settings\Bioanalyzer\2012-07-04\2012-07-04\_002.xad

Created: 7/4/2012 4:59:35 PM  
 Modified: 7/4/2012 5:42:34 PM

**Electropherogram Summary Continued ...**



**Overall Results for sample 10 : B34 Soni 1:10 5Cycles**

Number of peaks found: 22                      Corr. Area 1: 1,052.1  
 Noise: 0.2


**Peak table for sample 10 : B34 Soni 1:10 5Cycles**

Peak	Size [bp]	Conc. [pg/μl]	Molarity [pmol/l]	Observations
1	35	125.00	5,411.3	Lower Marker
2	46	31.41	1,031.6	
3	243	37.88	235.9	
4	258	43.26	253.6	
5	276	20.36	111.9	
6	288	26.46	139.2	
7	305	26.95	133.7	
8	325	45.26	210.8	
9	350	28.92	125.3	
10	368	34.75	142.9	
11	377	26.20	105.4	
12	385	23.17	91.3	
13	411	84.41	311.2	
14	448	67.95	229.6	
15	476	24.54	78.1	
16	506	24.18	72.3	
17	527	29.35	84.4	
18	552	25.93	71.2	
19	601	45.66	115.1	
20	636	22.72	54.1	
21	726	26.31	54.9	
22	838	24.78	44.8	
23	908	50.71	84.7	
24	10,380	75.00	10.9	Upper Marker

Assay Class: High Sensitivity DNA Assay  
Data Path: C:\...ents and Settings\Bioanalyzer\2012-07-04\2012-07-04\_002.xad

Created: 7/4/2012 4:59:35 PM  
Modified: 7/4/2012 5:42:34 PM

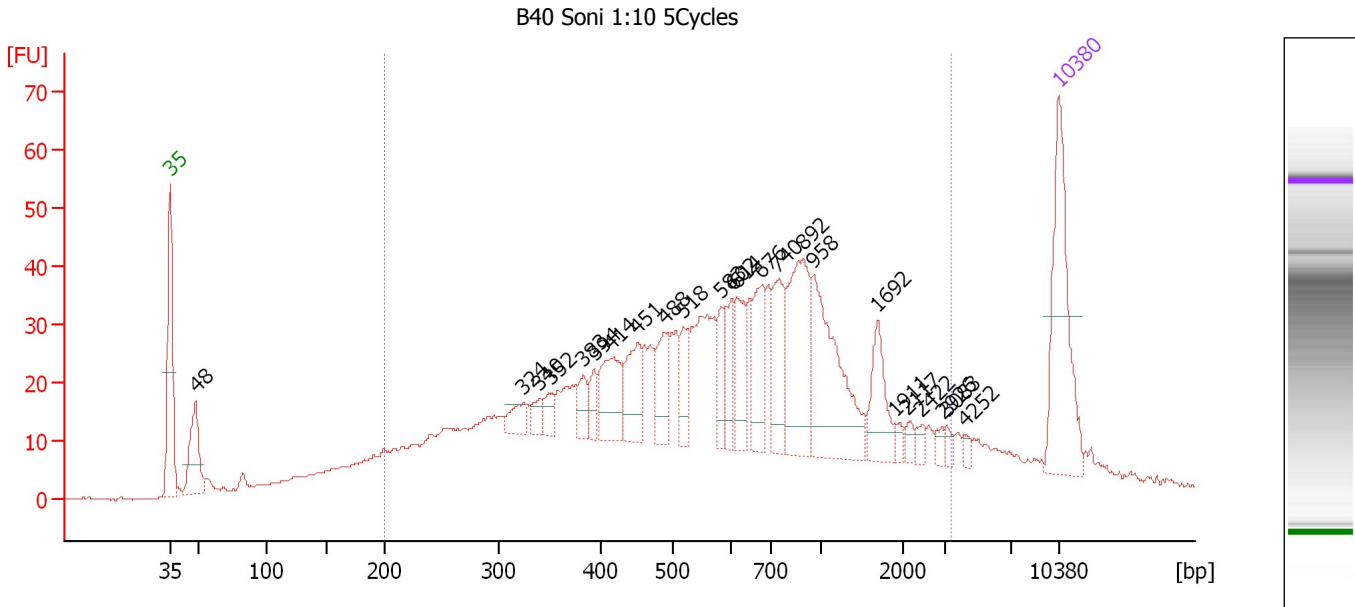
**Electropherogram Summary Continued ...****... Region table for sample 10 : B34 Soni 1:10 5Cycles**

<b>From [bp]</b>	<b>To [bp]</b>	<b>Average Size [bp]</b>	<b>Molarity [pmol/l]</b>	<b>Conc. [pg/μl]</b>	<b>Corr. Area</b>	<b>% of Total</b>	<b>Size distribution in CV [%]</b>	<b>Co lor</b>
164	1,827	511	6,740.9	1,636.40	1,052.1	86	52.6	

Assay Class: High Sensitivity DNA Assay  
 Data Path: C:\...ents and Settings\Bioanalyzer\2012-07-04\2012-07-04\_002.xad

Created: 7/4/2012 4:59:35 PM  
 Modified: 7/4/2012 5:42:34 PM

**Electropherogram Summary Continued ...**



**Overall Results for sample 11 : B40 Soni 1:10 5Cycles**

Number of peaks found: 24                      Corr. Area 1: 1,166.2  
 Noise: 0.2


**Peak table for sample 11 : B40 Soni 1:10 5Cycles**

Peak	Size [bp]	Conc. [pg/μl]	Molarity [pmol/l]	Observations
1	35	125.00	5,411.3	Lower Marker
2	48	58.06	1,821.5	
3	324	15.79	73.7	
4	340	9.91	44.1	
5	352	11.85	51.1	
6	383	16.42	64.9	
7	394	13.88	53.4	
8	414	44.95	164.3	
9	451	39.67	133.2	
10	488	33.23	103.1	
11	518	22.42	65.5	
12	583	22.27	57.9	
13	602	24.75	62.3	
14	614	32.80	81.0	
15	676	41.58	93.2	
16	740	40.81	83.6	
17	892	80.70	137.1	
18	958	90.77	143.5	
19	1,692	31.02	27.8	
20	1,911	4.28	3.4	
21	2,117	5.63	4.0	
22	2,422	4.81	3.0	
23	2,926	4.44	2.3	
24	3,083	4.26	2.1	
25	4,252	3.39	1.2	
26	10,380	75.00	10.9	Upper Marker

Assay Class: High Sensitivity DNA Assay  
Data Path: C:\...ents and Settings\Bioanalyzer\2012-07-04\2012-07-04\_002.xad

Created: 7/4/2012 4:59:35 PM  
Modified: 7/4/2012 5:42:34 PM

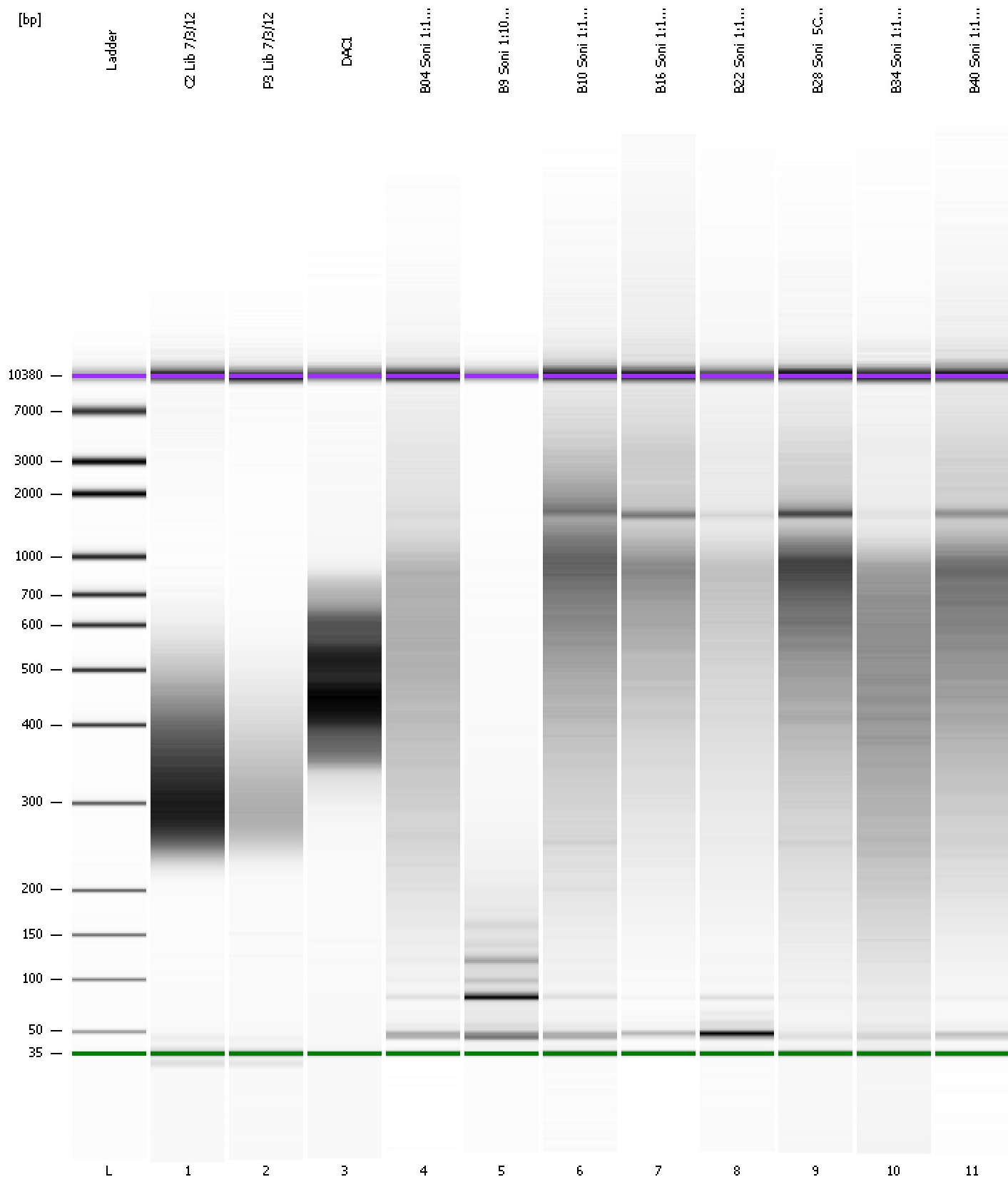
**Electropherogram Summary Continued ...****... Region table for sample 11 : B40 Soni 1:10 5Cycles**

<b>From [bp]</b>	<b>To [bp]</b>	<b>Average Size [bp]</b>	<b>Molarity [pmol/l]</b>	<b>Conc. [pg/μl]</b>	<b>Corr. Area</b>	<b>% of Total</b>	<b>Size distribution in CV [%]</b>	<b>Co lor</b>
200	3,286	751	4,895.8	1,506.27	1,166.2	83	73.8	

Assay Class: High Sensitivity DNA Assay  
Data Path: C:\...ents and Settings\Bioanalyzer\2012-07-04\2012-07-04\_002.xad

Created: 7/4/2012 4:59:35 PM  
Modified: 7/4/2012 5:42:34 PM

**Gel Image**



Assay Class: High Sensitivity DNA Assay Created: 7/4/2012 4:59:35 PM  
 Data Path: C:\...ents and Settings\Bioanalyzer\2012-07-04\2012-07-04\_002.xad Modified: 7/4/2012 5:42:34 PM

**Run Logbook**

Description	Number	Source	Category	Sub Category	Time	Time Zone	User	Host
Run ended on port 1 (Number of wells acquired: 12)		Instrument	Run		7/4/2012 5:40:55 PM	(GMT --07:00) Pacific Standard Time	UC Davis	D8XSMGH1
Run started on port 1 (File: C:\Documents and Settings\Bioanalyzer\2012-07-04\2012-07-04_002.xad)		Instrument	Run		7/4/2012 4:59:41 PM	(GMT --07:00) Pacific Standard Time	UC Davis	D8XSMGH1
Product Number : G2938B		Instrument	Run		7/4/2012 4:59:41 PM	(GMT --07:00) Pacific Standard Time	UC Davis	D8XSMGH1
Name :		Instrument	Run		7/4/2012 4:59:41 PM	(GMT --07:00) Pacific Standard Time	UC Davis	D8XSMGH1
Vendor : Agilent Technologies		Instrument	Run		7/4/2012 4:59:41 PM	(GMT --07:00) Pacific Standard Time	UC Davis	D8XSMGH1
Serial# : DE13701086		Instrument	Run		7/4/2012 4:59:41 PM	(GMT --07:00) Pacific Standard Time	UC Davis	D8XSMGH1
Firmware : C.01.069		Instrument	Run		7/4/2012 4:59:41 PM	(GMT --07:00) Pacific Standard Time	UC Davis	D8XSMGH1
Cartridge : Electrode		Instrument	Run		7/4/2012 4:59:41 PM	(GMT --07:00) Pacific Standard Time	UC Davis	D8XSMGH1