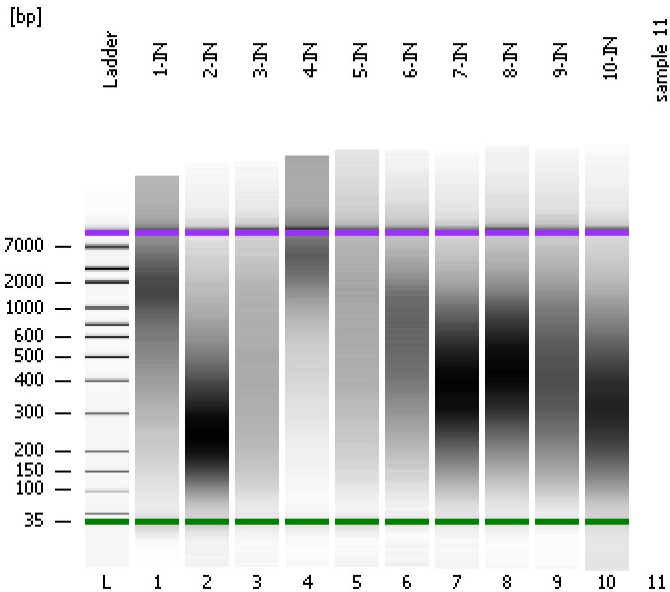


Assay Class: High Sensitivity DNA Assay
Data Path: C:\...ents and Settings\Bioanalyzer\2012-07-05\2012-07-05_003.xad

Created: 7/5/2012 2:16:04 PM
Modified: 7/5/2012 2:54:32 PM

Electrophoresis File Run Summary



Instrument Information:

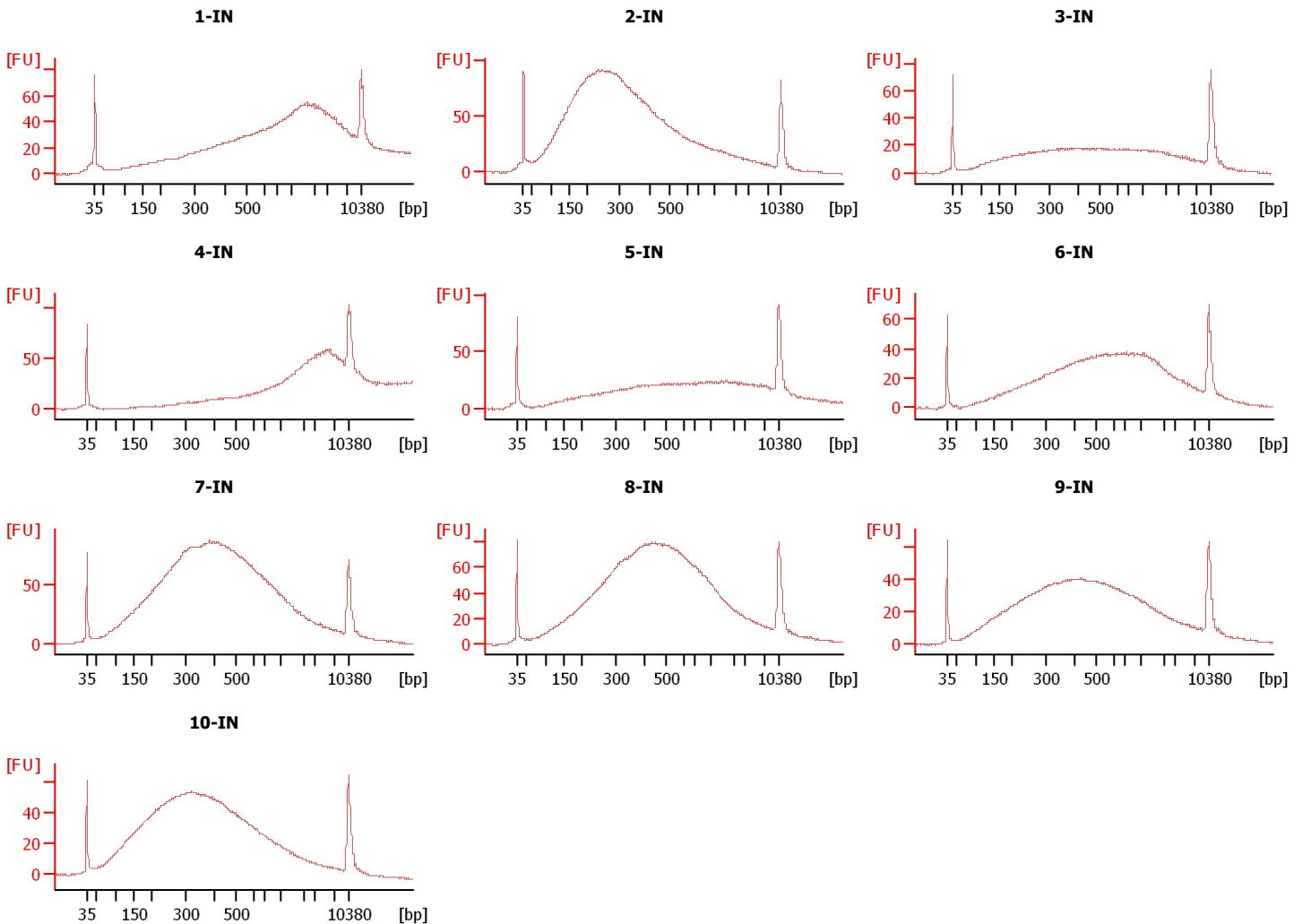
Instrument Name: DE13701086 Firmware: C.01.069
Serial#: DE13701086 Type: G2938B

Assay Information:

Assay Origin Path: C:\Program Files\Agilent\2100 bioanalyzer\2100 expert\assays\dsDNA\High Sensitivity DNA.xsy
Assay Class: High Sensitivity DNA Assay
Version: 1.03
Assay Comments: Copyright © 2003-2010 Agilent Technologies

Chip Information:

Chip Lot #: Reagent Kit Lot #:
Chip Comments:



Assay Class: High Sensitivity DNA Assay
 Data Path: C:\...ents and Settings\Bioanalyzer\2012-07-05\2012-07-05_003.xad

Created: 7/5/2012 2:16:04 PM
 Modified: 7/5/2012 2:54:32 PM

Electrophoresis File Run Summary (Chip Summary)

Sample Name	Sample Comment	Rest. Digest	Status	Observation	Result Label	Result Color
1-IN		<input type="checkbox"/>	✓			
2-IN		<input type="checkbox"/>	✓			
3-IN		<input type="checkbox"/>	✓			
4-IN		<input type="checkbox"/>	✓			
5-IN		<input type="checkbox"/>	✓			
6-IN		<input type="checkbox"/>	✓			
7-IN		<input type="checkbox"/>	✓			
8-IN		<input type="checkbox"/>	✓			
9-IN		<input type="checkbox"/>	✓			
10-IN		<input type="checkbox"/>	✓			
sample 11		<input type="checkbox"/>				
Ladder		<input type="checkbox"/>	✓			

Chip Lot #

Reagent Kit Lot #

Chip Comments :

Assay Class: High Sensitivity DNA Assay
Data Path: C:\...ents and Settings\Bioanalyzer\2012-07-05\2012-07-05_003.xad

Created: 7/5/2012 2:16:04 PM
Modified: 7/5/2012 2:54:32 PM

Electrophoresis Assay Details

General Analysis Settings

Number of Available Sample and Ladder Wells (Max.) : 12
Minimum Visible Range [s] : 32
Maximum Visible Range [s] : 138
Start Analysis Time Range [s] : 33
End Analysis Time Range [s] : 137.5
Ladder Concentration [pg/μl] : 1950
Uses Standard Area for Ladder Fragments
Lower Marker Concentration [pg/μl] : 125
Upper Marker Concentration [pg/μl] : 75
Used Upper Marker for Quantitation
Standard Curve Fit is Point to Point
Show Data Aligned to Lower and Upper Marker

Integrator Settings

Integration Start Time [s] : 33.05
Integration End Time [s] : 137
Slope Threshold : 0.8
Height Threshold [FU] : 5
Area Threshold : 0.1
Width Threshold [s] : 0.6
Baseline Plateau [s] : 0.5

Filter Settings

Filter Width [s] : 0.5
Polynomial Order : 4

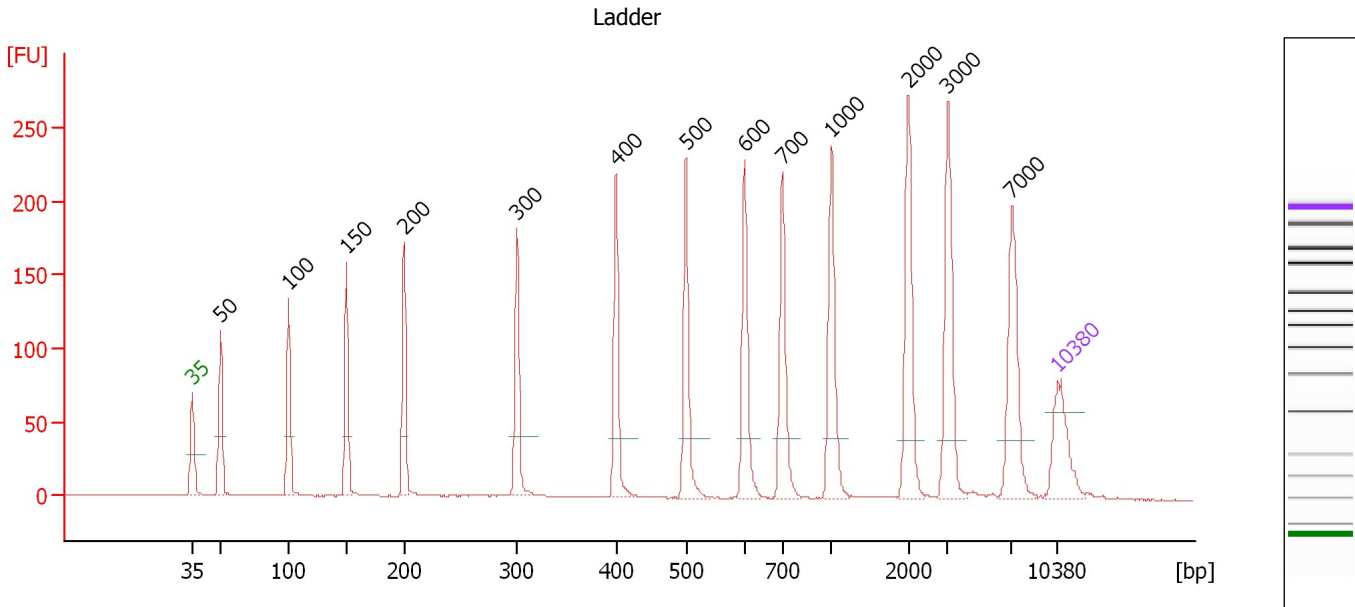
Ladder

Ladder Peak	Size	Area
1	35	160
2	50	210
3	100	208
4	150	221
5	200	242
6	300	270
7	400	305
8	500	306
9	600	336
10	700	321
11	1000	366
12	2000	413
13	3000	411
14	7000	400
15	10380	214

Assay Class: High Sensitivity DNA Assay
 Data Path: C:\...ents and Settings\Bioanalyzer\2012-07-05\2012-07-05_003.xad

Created: 7/5/2012 2:16:04 PM
 Modified: 7/5/2012 2:54:32 PM

Electropherogram Summary



Overall Results for Ladder

Noise: 0.2

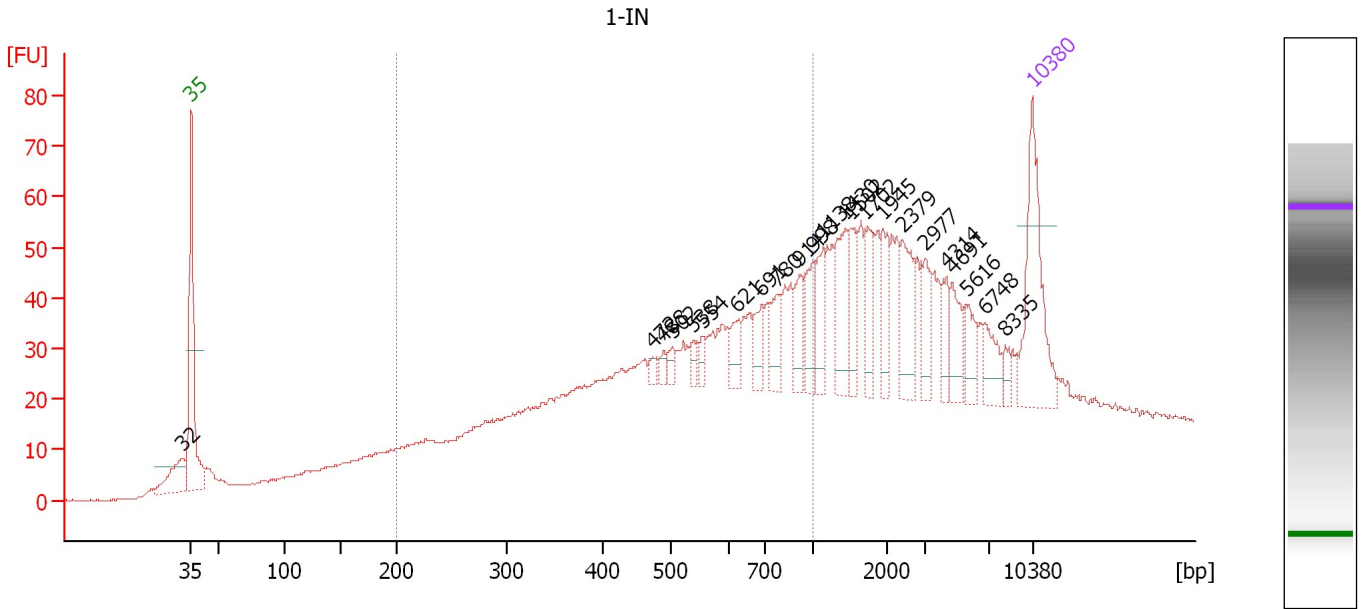
Peak table for Ladder

Peak	Size [bp]	Conc. [pg/μl]	Molarity [pmol/l]	Observations
1	35	125.00	5,411.3	Lower Marker
2	50	150.00	4,545.5	Ladder Peak
3	100	150.00	2,272.7	Ladder Peak
4	150	150.00	1,515.2	Ladder Peak
5	200	150.00	1,136.4	Ladder Peak
6	300	150.00	757.6	Ladder Peak
7	400	150.00	568.2	Ladder Peak
8	500	150.00	454.5	Ladder Peak
9	600	150.00	378.8	Ladder Peak
10	700	150.00	324.7	Ladder Peak
11	1,000	150.00	227.3	Ladder Peak
12	2,000	150.00	113.6	Ladder Peak
13	3,000	150.00	75.8	Ladder Peak
14	7,000	150.00	32.5	Ladder Peak
15	10,380	75.00	10.9	Upper Marker

Assay Class: High Sensitivity DNA Assay
 Data Path: C:\...ents and Settings\Bioanalyzer\2012-07-05\2012-07-05_003.xad

Created: 7/5/2012 2:16:04 PM
 Modified: 7/5/2012 2:54:32 PM

Electropherogram Summary Continued ...



Overall Results for sample 1 : 1-IN

Number of peaks found: 23 Corr. Area 1: 770.1
 Noise: 0.2


Peak table for sample 1 : 1-IN

Peak	Size [bp]	Conc. [pg/μl]	Molarity [pmol/l]	Observations
1	32	0.00	0.0	
2	35	125.00	5,411.3	Lower Marker
3	472	6.52	20.9	
4	488	6.53	20.3	
5	502	7.87	23.8	
6	538	9.40	26.5	
7	554	9.33	25.5	
8	621	17.19	41.9	
9	691	18.62	40.8	
10	780	24.48	47.6	
11	914	20.86	34.6	
12	998	30.40	46.2	
13	1,138	25.27	33.7	
14	1,430	41.78	44.3	
15	1,502	29.78	30.0	
16	1,702	27.21	24.2	
17	1,945	25.43	19.8	
18	2,379	36.35	23.2	
19	2,977	22.64	11.5	
20	4,314	16.75	5.9	
21	4,691	23.00	7.4	
22	5,616	17.12	4.6	
23	6,748	21.74	4.9	
24	8,335	6.90	1.3	
25	10,380	75.00	10.9	Upper Marker

Assay Class: High Sensitivity DNA Assay
Data Path: C:\...ents and Settings\Bioanalyzer\2012-07-05\2012-07-05_003.xad

Created: 7/5/2012 2:16:04 PM
Modified: 7/5/2012 2:54:32 PM

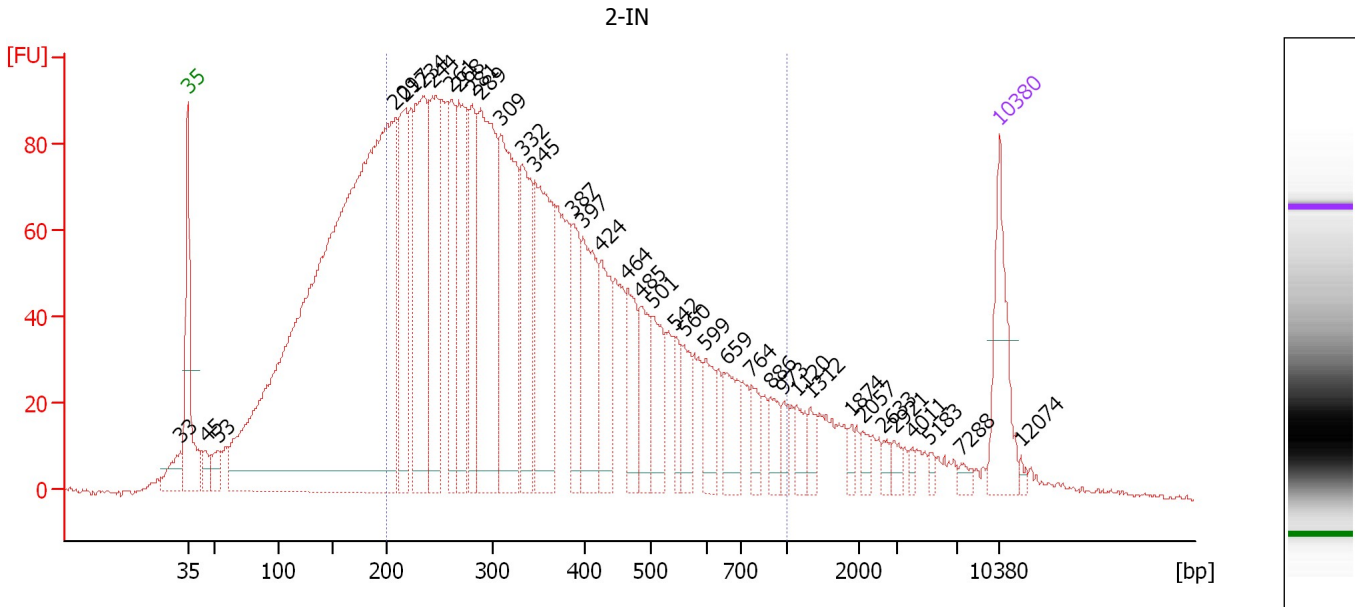
Electropherogram Summary Continued ...**... Region table for sample 1 : 1-IN**

From [bp]	To [bp]	Average Size [bp]	Molarity [pmol/l]	Conc. [pg/μl]	Corr. Area	% of Total	Size distribution in CV [%]	Co lor
200	1,000	543	3,668.8	1,043.53	770.1	52	37.7	

Assay Class: High Sensitivity DNA Assay
 Data Path: C:\...ents and Settings\Bioanalyzer\2012-07-05\2012-07-05_003.xad

Created: 7/5/2012 2:16:04 PM
 Modified: 7/5/2012 2:54:32 PM

Electropherogram Summary Continued ...



Overall Results for sample 2 : 2-IN

Number of peaks found: 37 Corr. Area 1: 2,898.7
 Noise: 0.6

Peak table for sample 2 : 2-IN

Peak	Size [bp]	Conc. [pg/μl]	Molarity [pmol/l]	Observations
1	33	0.00	0.0	
2	35	125.00	5,411.3	Lower Marker
3	45	25.59	856.8	
4	53	30.86	875.1	
5	209	1,769.56	12,849.6	
6	217	177.62	1,239.1	
7	234	271.80	1,761.6	
8	244	200.31	1,244.7	
9	261	117.39	680.4	
10	268	158.13	892.6	
11	281	109.82	592.2	
12	289	312.66	1,639.0	
13	309	273.47	1,342.3	
14	332	155.08	707.4	
15	345	219.78	964.3	
16	387	81.28	318.1	
17	397	134.03	511.0	
18	424	90.66	324.0	
19	464	71.31	232.9	
20	485	65.07	203.3	
21	501	67.58	204.2	
22	542	30.94	86.5	
23	560	40.51	109.7	
24	599	41.04	103.8	
25	659	51.35	118.1	
26	764	29.30	58.1	

Assay Class: High Sensitivity DNA Assay
 Data Path: C:\...ents and Settings\Bioanalyzer\2012-07-05\2012-07-05_003.xad

Created: 7/5/2012 2:16:04 PM
 Modified: 7/5/2012 2:54:32 PM

Electropherogram Summary Continued ...

... Peak table for sample 2 : 2-IN

Peak	Size [bp]	Conc. [pg/μl]	Molarity [pmol/l]	Observations
27	886	26.85	45.9	
28	973	15.41	24.0	
29	1,120	23.01	31.1	
30	1,312	14.75	17.0	
31	1,874	8.30	6.7	
32	2,057	10.17	7.5	
33	2,633	8.25	4.7	
34	2,921	9.17	4.8	
35	4,011	5.32	2.0	
36	5,183	4.77	1.4	
37	7,288	7.26	1.5	
38	10,380	75.00	10.9	Upper Marker
39	12,074	0.00	0.0	

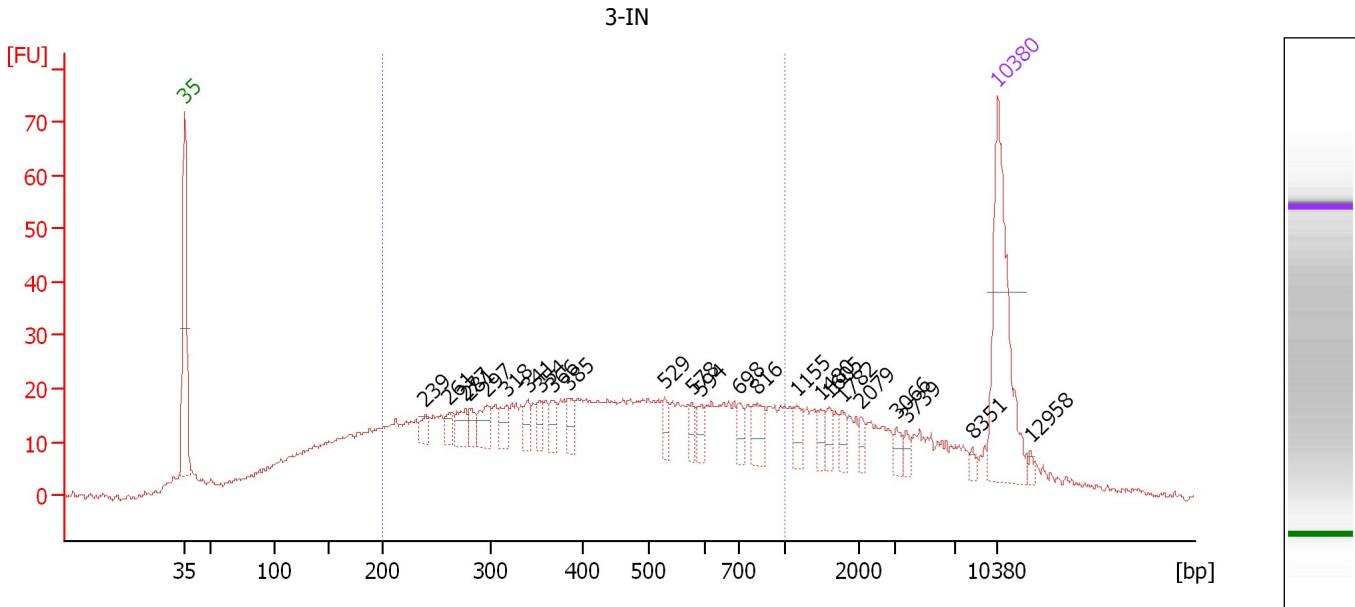
Region table for sample 2 : 2-IN

From [bp]	To [bp]	Average Size [bp]	Molarity [pmol/l]	Conc. [pg/μl]	Corr. Area	% of Total	Size distribution in CV [%]	Color
200	1,000	373	17,961.8	3,686.53	2,898.7	65	41.6	

Assay Class: High Sensitivity DNA Assay
 Data Path: C:\...ents and Settings\Bioanalyzer\2012-07-05\2012-07-05_003.xad

Created: 7/5/2012 2:16:04 PM
 Modified: 7/5/2012 2:54:32 PM

Electropherogram Summary Continued ...



Overall Results for sample 3 : 3-IN

Number of peaks found: 24 Corr. Area 1: 798.5
 Noise: 0.6


Peak table for sample 3 : 3-IN

Peak	Size [bp]	Conc. [pg/μl]	Molarity [pmol/l]	Observations
1	35	125.00	5,411.3	Lower Marker
2	239	8.64	54.7	
3	261	9.54	55.4	
4	277	14.63	80.0	
5	281	8.65	46.7	
6	297	17.65	90.0	
7	318	11.83	56.3	
8	341	9.80	43.6	
9	354	9.24	39.6	
10	366	11.24	46.5	
11	385	10.87	42.8	
12	529	8.69	24.9	
13	578	7.79	20.4	
14	594	9.27	23.7	
15	698	8.65	18.8	
16	816	14.00	26.0	
17	1,155	9.22	12.1	
18	1,480	6.17	6.3	
19	1,605	7.55	7.1	
20	1,782	6.48	5.5	
21	2,079	4.90	3.6	
22	3,066	5.46	2.7	
23	3,739	3.72	1.5	
24	8,351	2.71	0.5	
25	10,380	75.00	10.9	Upper Marker
26	12,958	0.00	0.0	

Assay Class: High Sensitivity DNA Assay
Data Path: C:\...ents and Settings\Bioanalyzer\2012-07-05\2012-07-05_003.xad

Created: 7/5/2012 2:16:04 PM
Modified: 7/5/2012 2:54:32 PM

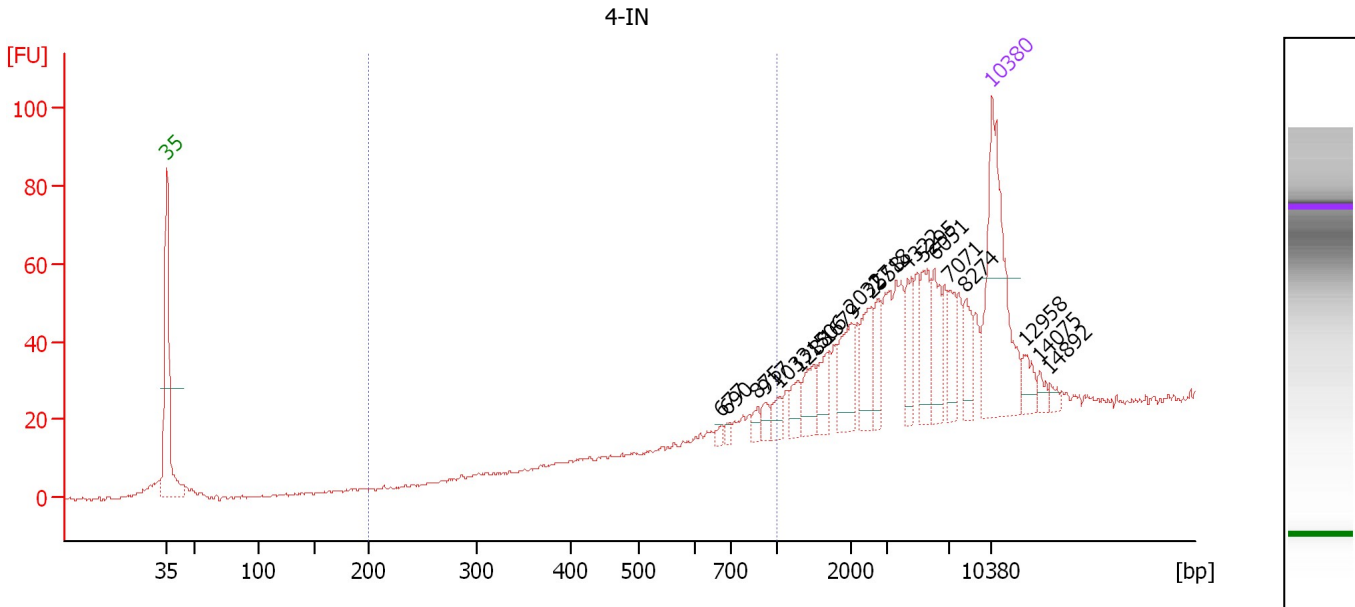
Electropherogram Summary Continued ...**... Region table for sample 3 : 3-IN**

From [bp]	To [bp]	Average Size [bp]	Molarity [pmol/l]	Conc. [pg/μl]	Corr. Area	% of Total	Size distribution in CV [%]	Co lor
200	1,000	458	3,875.4	926.68	798.5	61	41.7	

Assay Class: High Sensitivity DNA Assay
 Data Path: C:\...ents and Settings\Bioanalyzer\2012-07-05\2012-07-05_003.xad

Created: 7/5/2012 2:16:04 PM
 Modified: 7/5/2012 2:54:32 PM

Electropherogram Summary Continued ...



Overall Results for sample 4 : 4-IN

Number of peaks found: 19 Corr. Area 1: 25.1
 Noise: 0.5

Peak table for sample 4 : 4-IN

Peak	Size [bp]	Conc. [pg/μl]	Molarity [pmol/l]	Observations
1	35	125.00	5,411.3	Lower Marker
2	677	2.89	6.5	
3	690	2.82	6.2	
4	875	4.95	8.6	
5	917	5.63	9.3	
6	1,033	7.59	11.1	
7	1,288	9.91	11.7	
8	1,506	14.78	14.9	
9	1,679	14.44	13.0	
10	2,032	23.83	17.8	
11	2,558	21.27	12.6	
12	2,718	12.95	7.2	
13	4,322	17.50	6.1	
14	5,295	21.42	6.1	
15	6,051	20.97	5.2	
16	7,071	13.67	2.9	
17	8,274	14.61	2.7	
18	10,380	75.00	10.9	Upper Marker
19	12,958	0.00	0.0	
20	14,075	0.00	0.0	
21	14,892	0.00	0.0	

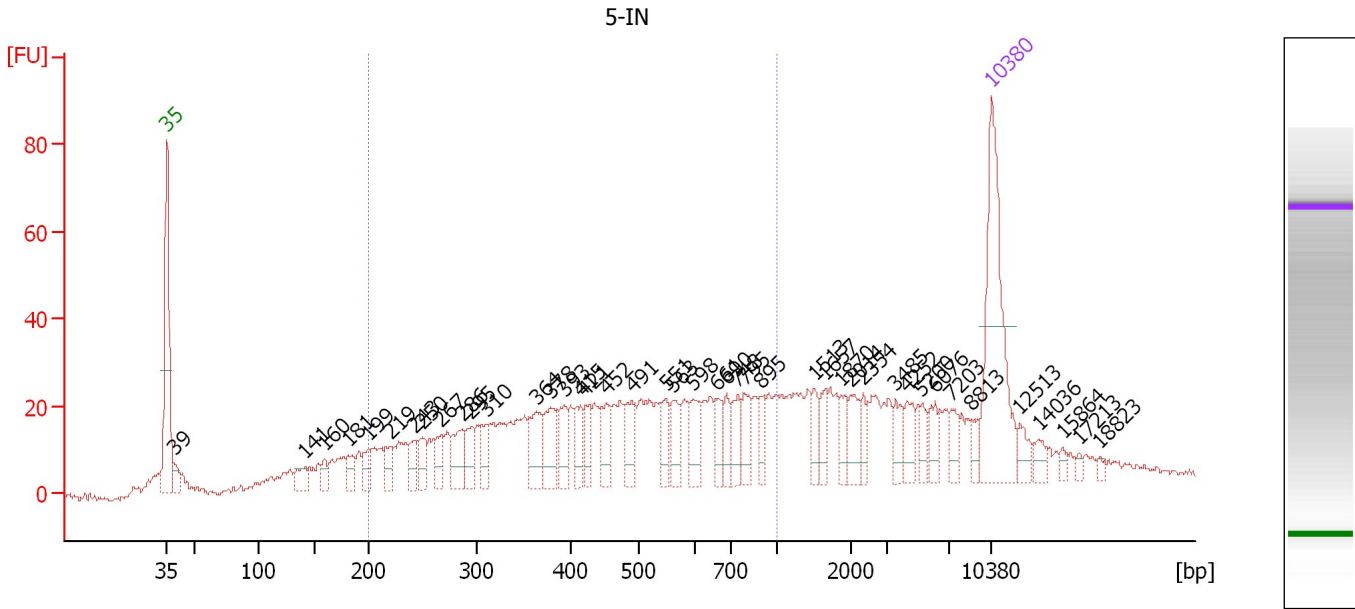
Region table for sample 4 : 4-IN

From [bp]	To [bp]	Average Size [bp]	Molarity [pmol/l]	Conc. [pg/μl]	Corr. Area	% of Total	Size distribution in CV [%]	Color
200	1,000	846	33.3	18.33	25.1	5	12.5	Blue

Assay Class: High Sensitivity DNA Assay
 Data Path: C:\...ents and Settings\Bioanalyzer\2012-07-05\2012-07-05_003.xad

Created: 7/5/2012 2:16:04 PM
 Modified: 7/5/2012 2:54:32 PM

Electropherogram Summary Continued ...



Overall Results for sample 5 : 5-IN

Number of peaks found: 43 Corr. Area 1: 758.3
 Noise: 0.8

Peak table for sample 5 : 5-IN

Peak	Size [bp]	Conc. [pg/μl]	Molarity [pmol/l]	Observations
1	35	125.00	5,411.3	Lower Marker
2	39	11.56	452.5	
3	141	13.58	145.5	
4	160	8.70	82.6	
5	181	11.20	93.8	
6	199	13.53	103.0	
7	219	10.85	75.0	
8	243	13.02	81.2	
9	250	14.40	87.4	
10	267	15.22	86.4	
11	286	21.17	112.0	
12	295	16.42	84.3	
13	310	14.70	71.9	
14	364	26.82	111.7	
15	378	25.49	102.2	
16	393	18.39	70.9	
17	415	14.86	54.3	
18	421	14.09	50.7	
19	452	17.55	58.8	
20	491	18.57	57.3	
21	551	15.43	42.5	
22	563	15.99	43.1	
23	598	16.13	40.8	
24	661	13.78	31.6	
25	690	11.25	24.7	
26	748	15.16	30.7	

Assay Class: High Sensitivity DNA Assay
 Data Path: C:\...ents and Settings\Bioanalyzer\2012-07-05\2012-07-05_003.xad

Created: 7/5/2012 2:16:04 PM
 Modified: 7/5/2012 2:54:32 PM

Electropherogram Summary Continued ...

... Peak table for sample 5 : 5-IN

Peak	Size [bp]	Conc. [pg/µl]	Molarity [pmol/l]	Observations
27	795	14.46	27.6	
28	895	10.36	17.5	
29	1,513	9.13	9.1	
30	1,657	10.88	9.9	
31	1,870	9.44	7.7	
32	2,014	13.41	10.1	
33	2,354	8.26	5.3	
34	3,485	10.60	4.6	
35	4,252	11.18	4.0	
36	5,200	7.12	2.1	
37	6,076	9.10	2.3	
38	7,203	8.54	1.8	
39	8,813	5.12	0.9	
40	10,380	75.00	10.9	Upper Marker
41	12,513	0.00	0.0	
42	14,036	0.00	0.0	
43	15,864	0.00	0.0	
44	17,213	0.00	0.0	
45	18,823	0.00	0.0	

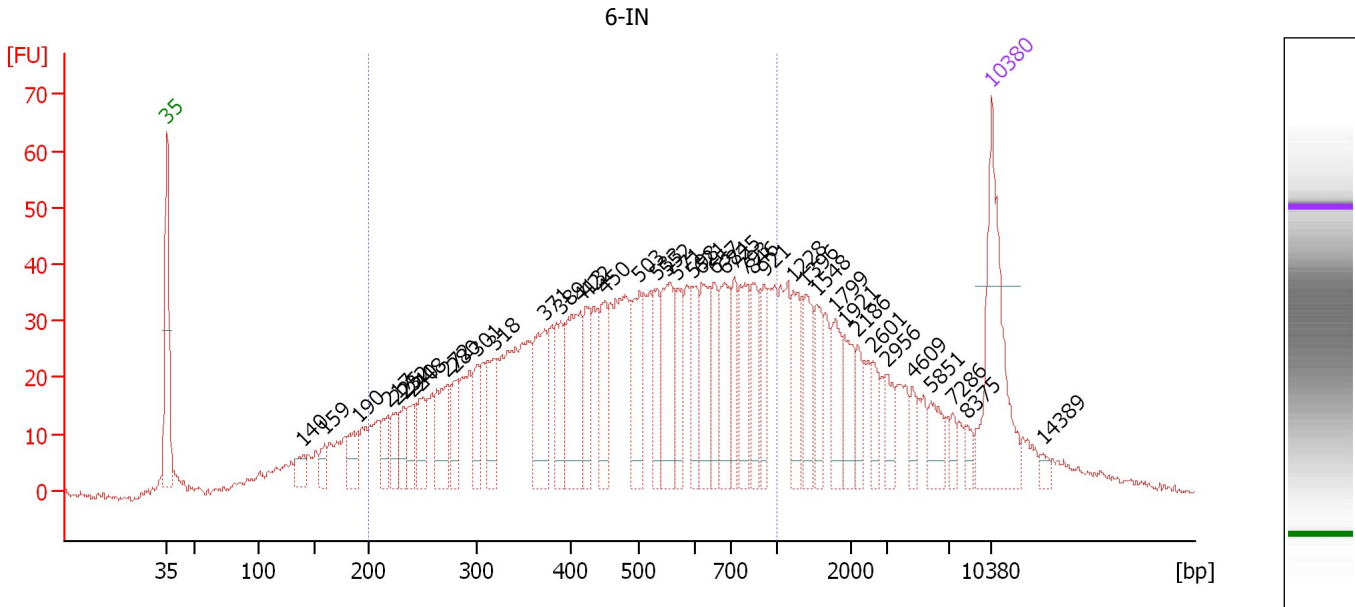
Region table for sample 5 : 5-IN

From [bp]	To [bp]	Average Size [bp]	Molarity [pmol/l]	Conc. [pg/µl]	Corr. Area	% of Total	Size distribution in CV [%]	Color
200	1,000	484	2,661.1	674.03	758.3	59	40.3	

Assay Class: High Sensitivity DNA Assay
 Data Path: C:\...ents and Settings\Bioanalyzer\2012-07-05\2012-07-05_003.xad

Created: 7/5/2012 2:16:04 PM
 Modified: 7/5/2012 2:54:32 PM

Electropherogram Summary Continued ...



Overall Results for sample 6 : 6-IN

Number of peaks found: 42 Corr. Area 1: 1,245.4
 Noise: 0.5

Peak table for sample 6 : 6-IN

Peak	Size [bp]	Conc. [pg/μl]	Molarity [pmol/l]	Observations
1	35	125.00	5,411.3	Lower Marker
2	140	15.95	172.7	
3	159	12.74	121.2	
4	190	23.40	186.4	
5	217	18.61	129.7	
6	225	20.70	139.2	
7	232	18.76	122.3	
8	240	22.15	139.7	
9	248	26.41	161.4	
10	272	42.70	237.6	
11	280	22.48	121.7	
12	301	24.22	122.0	
13	318	36.05	171.5	
14	371	56.15	229.0	
15	389	35.14	136.8	
16	413	66.70	244.7	
17	422	30.30	108.7	
18	450	34.56	116.4	
19	503	45.36	136.6	
20	533	27.76	78.9	
21	552	52.79	144.9	
22	571	30.35	80.6	
23	598	25.61	64.9	
24	621	41.56	101.4	
25	657	25.82	59.6	
26	684	41.98	92.9	

Assay Class: High Sensitivity DNA Assay
 Data Path: C:\...ents and Settings\Bioanalyzer\2012-07-05\2012-07-05_003.xad

Created: 7/5/2012 2:16:04 PM
 Modified: 7/5/2012 2:54:32 PM

Electropherogram Summary Continued ...

... Peak table for sample 6 : 6-IN

Peak	Size [bp]	Conc. [pg/μl]	Molarity [pmol/l]	Observations
27	725	25.87	54.1	
28	793	37.93	72.5	
29	846	23.90	42.8	
30	921	22.67	37.3	
31	1,228	26.17	32.3	
32	1,396	26.09	28.3	
33	1,548	21.59	21.1	
34	1,799	22.12	18.6	
35	1,921	22.70	17.9	
36	2,186	14.02	9.7	
37	2,601	13.21	7.7	
38	2,956	14.62	7.5	
39	4,609	9.54	3.1	
40	5,851	16.42	4.3	
41	7,286	6.00	1.2	
42	8,375	6.14	1.1	
43	10,380	75.00	10.9	Upper Marker
44	14,389	0.00	0.0	

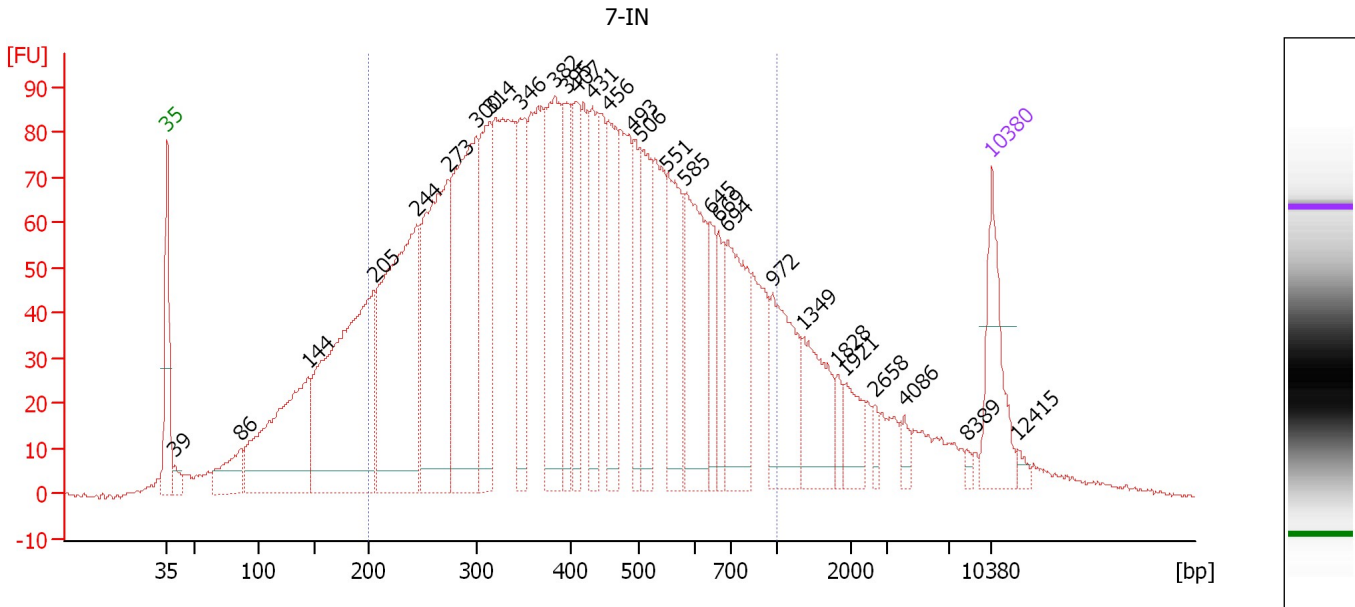
Region table for sample 6 : 6-IN

From [bp]	To [bp]	Average Size [bp]	Molarity [pmol/l]	Conc. [pg/μl]	Corr. Area	% of Total	Size distribution in CV [%]	Color
200	1,000	500	5,285.2	1,397.33	1,245.4	69	38.6	

Assay Class: High Sensitivity DNA Assay
 Data Path: C:\...ents and Settings\Bioanalyzer\2012-07-05\2012-07-05_003.xad

Created: 7/5/2012 2:16:04 PM
 Modified: 7/5/2012 2:54:32 PM

Electropherogram Summary Continued ...



Overall Results for sample 7 : 7-IN

Number of peaks found: 29 Corr. Area 1: 3,251.5
 Noise: 0.5

Peak table for sample 7 : 7-IN

Peak	Size [bp]	Conc. [pg/μl]	Molarity [pmol/l]	Observations
1	35	125.00	5,411.3	Lower Marker
2	39	16.54	635.8	
3	86	64.24	1,134.6	
4	144	306.91	3,219.2	
5	205	484.42	3,583.9	
6	244	437.28	2,713.6	
7	273	346.06	1,920.5	
8	300	359.79	1,818.5	
9	314	177.12	854.4	
10	346	133.11	583.2	
11	382	195.23	773.8	
12	395	98.12	376.5	
13	407	90.03	335.0	
14	431	117.31	412.5	
15	456	128.19	426.4	
16	493	70.00	215.2	
17	506	117.98	353.5	
18	551	135.76	373.2	
19	585	156.95	406.8	
20	645	49.23	115.6	
21	669	50.47	114.4	
22	694	137.13	299.5	
23	972	109.37	170.5	
24	1,349	80.82	90.7	
25	1,828	14.94	12.4	
26	1,921	35.57	28.1	

Assay Class: High Sensitivity DNA Assay
 Data Path: C:\...ents and Settings\Bioanalyzer\2012-07-05\2012-07-05_003.xad

Created: 7/5/2012 2:16:04 PM
 Modified: 7/5/2012 2:54:32 PM

Electropherogram Summary Continued ...

... Peak table for sample 7 : 7-IN

Peak	Size [bp]	Conc. [pg/μl]	Molarity [pmol/l]	Observations
27	2,658	9.72	5.5	
28	4,086	11.02	4.1	
29	8,389	4.41	0.8	
30	10,380	75.00	10.9	Upper Marker
31	12,415	0.00	0.0	

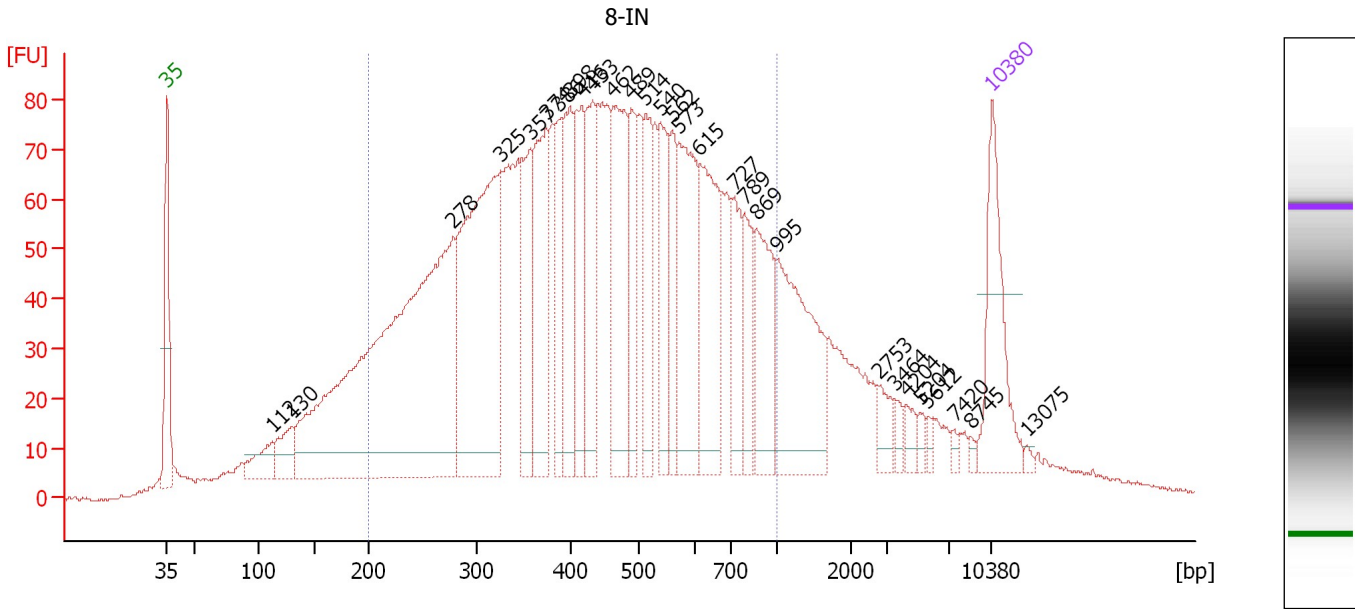
Region table for sample 7 : 7-IN

From [bp]	To [bp]	Average Size [bp]	Molarity [pmol/l]	Conc. [pg/μl]	Corr. Area	% of Total	Size distribution in CV [%]	Color
200	1,000	437	17,141.3	4,054.92	3,251.5	76	39.3	

Assay Class: High Sensitivity DNA Assay
 Data Path: C:\...ents and Settings\Bioanalyzer\2012-07-05\2012-07-05_003.xad

Created: 7/5/2012 2:16:04 PM
 Modified: 7/5/2012 2:54:32 PM

Electropherogram Summary Continued ...



Overall Results for sample 8 : 8-IN

Number of peaks found: 29 Corr. Area 1: 2,818.8
 Noise: 0.4

Peak table for sample 8 : 8-IN

Peak	Size [bp]	Conc. [pg/μl]	Molarity [pmol/l]	Observations
1	35	125.00	5,411.3	Lower Marker
2	112	39.69	537.5	
3	130	43.15	503.5	
4	278	694.02	3,783.9	
5	325	348.99	1,627.1	
6	357	88.56	376.2	
7	374	136.70	553.9	
8	386	62.74	246.3	
9	398	100.63	382.7	
10	416	95.16	346.9	
11	433	99.83	349.7	
12	462	137.56	450.9	
13	489	62.47	193.4	
14	514	72.34	213.4	
15	540	71.57	200.9	
16	562	52.59	141.8	
17	573	130.22	344.2	
18	615	125.20	308.5	
19	727	53.40	111.2	
20	789	48.40	92.9	
21	869	80.00	139.5	
22	995	140.77	214.3	
23	2,753	16.29	9.0	
24	3,464	8.66	3.8	
25	4,204	10.07	3.6	
26	5,204	5.82	1.7	

Assay Class: High Sensitivity DNA Assay
 Data Path: C:\...ents and Settings\Bioanalyzer\2012-07-05\2012-07-05_003.xad


Created: 7/5/2012 2:16:04 PM
 Modified: 7/5/2012 2:54:32 PM

Electropherogram Summary Continued ...

... Peak table for sample 8 : 8-IN

Peak	Size [bp]	Conc. [pg/μl]	Molarity [pmol/l]	Observations
27	5,612	5.14	1.4	
28	7,420	3.74	0.8	
29	8,745	2.93	0.5	
30	10,380	75.00	10.9	Upper Marker
31	13,075	0.00	0.0	

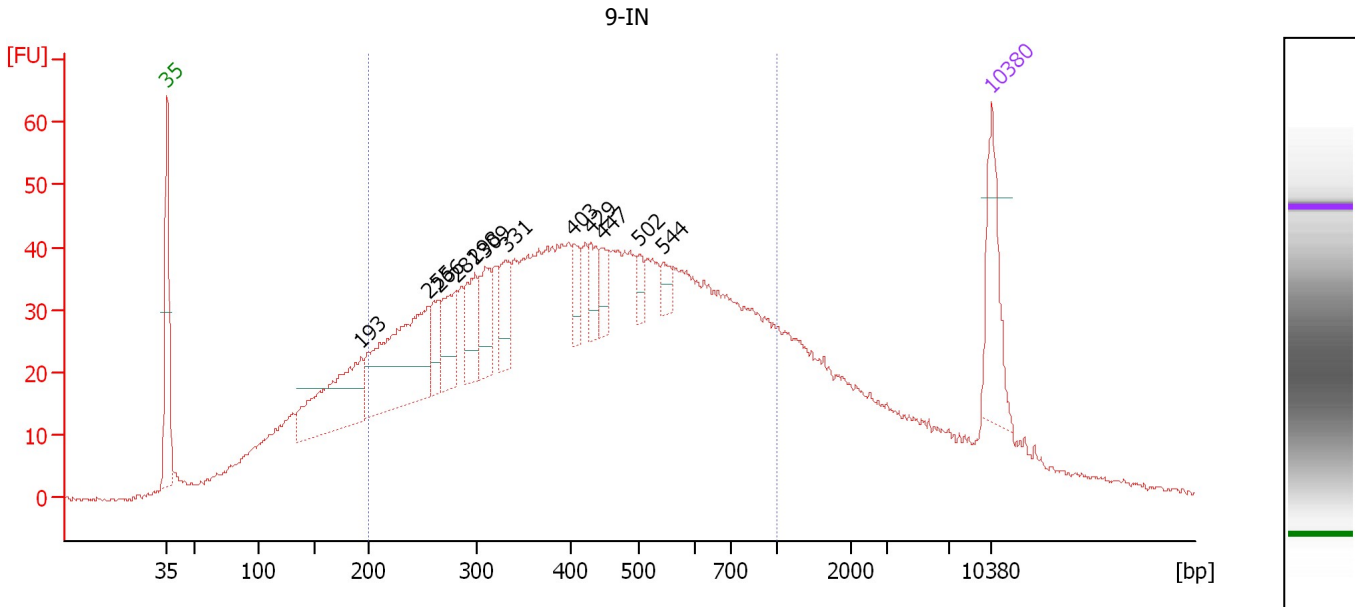
Region table for sample 8 : 8-IN

From [bp]	To [bp]	Average Size [bp]	Molarity [pmol/l]	Conc. [pg/μl]	Corr. Area	% of Total	Size distribution in CV [%]	Color
200	1,000	461	12,124.2	3,019.71	2,818.8	76	38.3	

Assay Class: High Sensitivity DNA Assay
 Data Path: C:\...ents and Settings\Bioanalyzer\2012-07-05\2012-07-05_003.xad

Created: 7/5/2012 2:16:04 PM
 Modified: 7/5/2012 2:54:32 PM

Electropherogram Summary Continued ...



Overall Results for sample 9 : 9-IN

Number of peaks found: 12 Corr. Area 1: 1,588.2
 Noise: 0.4

Peak table for sample 9 : 9-IN

Peak	Size [bp]	Conc. [pg/μl]	Molarity [pmol/l]	Observations
1	35	125.00	5,411.3	Lower Marker
2	193	183.66	1,440.4	
3	255	246.32	1,463.1	
4	266	42.31	241.4	
5	281	68.34	368.3	
6	298	60.89	309.2	
7	309	56.57	277.0	
8	331	49.47	226.2	
9	403	31.11	117.0	
10	429	33.79	119.3	
11	447	29.59	100.3	
12	502	15.56	47.0	
13	544	18.29	50.9	
14	10,380	75.00	10.9	Upper Marker

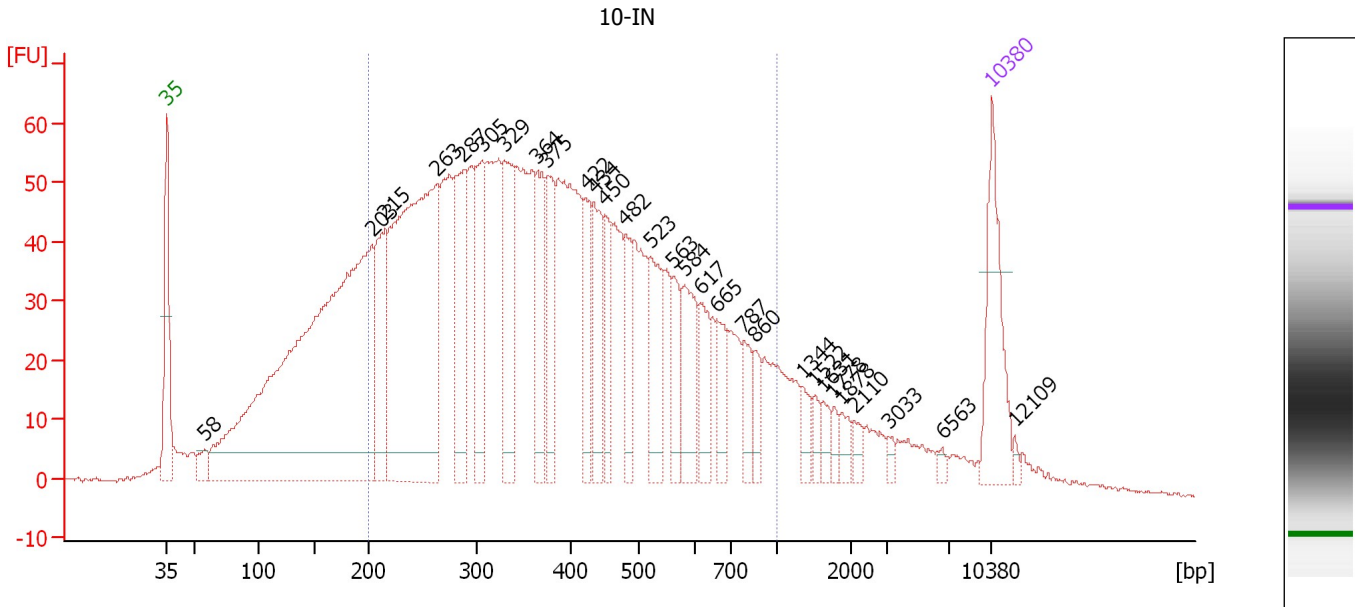
Region table for sample 9 : 9-IN

From [bp]	To [bp]	Average Size [bp]	Molarity [pmol/l]	Conc. [pg/μl]	Corr. Area	% of Total	Size distribution in CV [%]	Color
200	1,000	450	13,468.5	3,225.85	1,588.2	71	40.2	Blue

Assay Class: High Sensitivity DNA Assay
 Data Path: C:\...ents and Settings\Bioanalyzer\2012-07-05\2012-07-05_003.xad

Created: 7/5/2012 2:16:04 PM
 Modified: 7/5/2012 2:54:32 PM

Electropherogram Summary Continued ...



Overall Results for sample 10 : 10-IN

Number of peaks found: 29 Corr. Area 1: 2,021.7
 Noise: 0.4

Peak table for sample 10 : 10-IN

Peak	Size [bp]	Conc. [pg/μl]	Molarity [pmol/l]	Observations
1	35	125.00	5,411.3	Lower Marker
2	58	20.67	535.6	
3	203	893.51	6,683.4	
4	215	122.37	861.6	
5	263	503.91	2,902.7	
6	287	128.21	676.3	
7	305	92.11	457.2	
8	329	114.57	528.3	
9	364	82.42	343.1	
10	375	79.39	321.0	
11	422	56.39	202.5	
12	434	77.17	269.5	
13	450	47.86	161.1	
14	482	46.81	147.3	
15	523	62.72	181.8	
16	563	36.92	99.3	
17	584	67.60	175.2	
18	617	40.46	99.4	
19	665	35.01	79.7	
20	787	27.47	52.9	
21	860	20.59	36.3	
22	1,344	14.25	16.1	
23	1,522	10.59	10.5	
24	1,631	11.64	10.8	
25	1,778	8.04	6.9	
26	1,878	11.74	9.5	

Assay Class: High Sensitivity DNA Assay
 Data Path: C:\...ents and Settings\Bioanalyzer\2012-07-05\2012-07-05_003.xad

Created: 7/5/2012 2:16:04 PM
 Modified: 7/5/2012 2:54:32 PM

Electropherogram Summary Continued ...

... Peak table for sample 10 : 10-IN

Peak	Size [bp]	Conc. [pg/μl]	Molarity [pmol/l]	Observations
27	2,110	9.24	6.6	
28	3,033	5.76	2.9	
29	6,563	4.92	1.1	
30	10,380	75.00	10.9	Upper Marker
31	12,109	0.00	0.0	

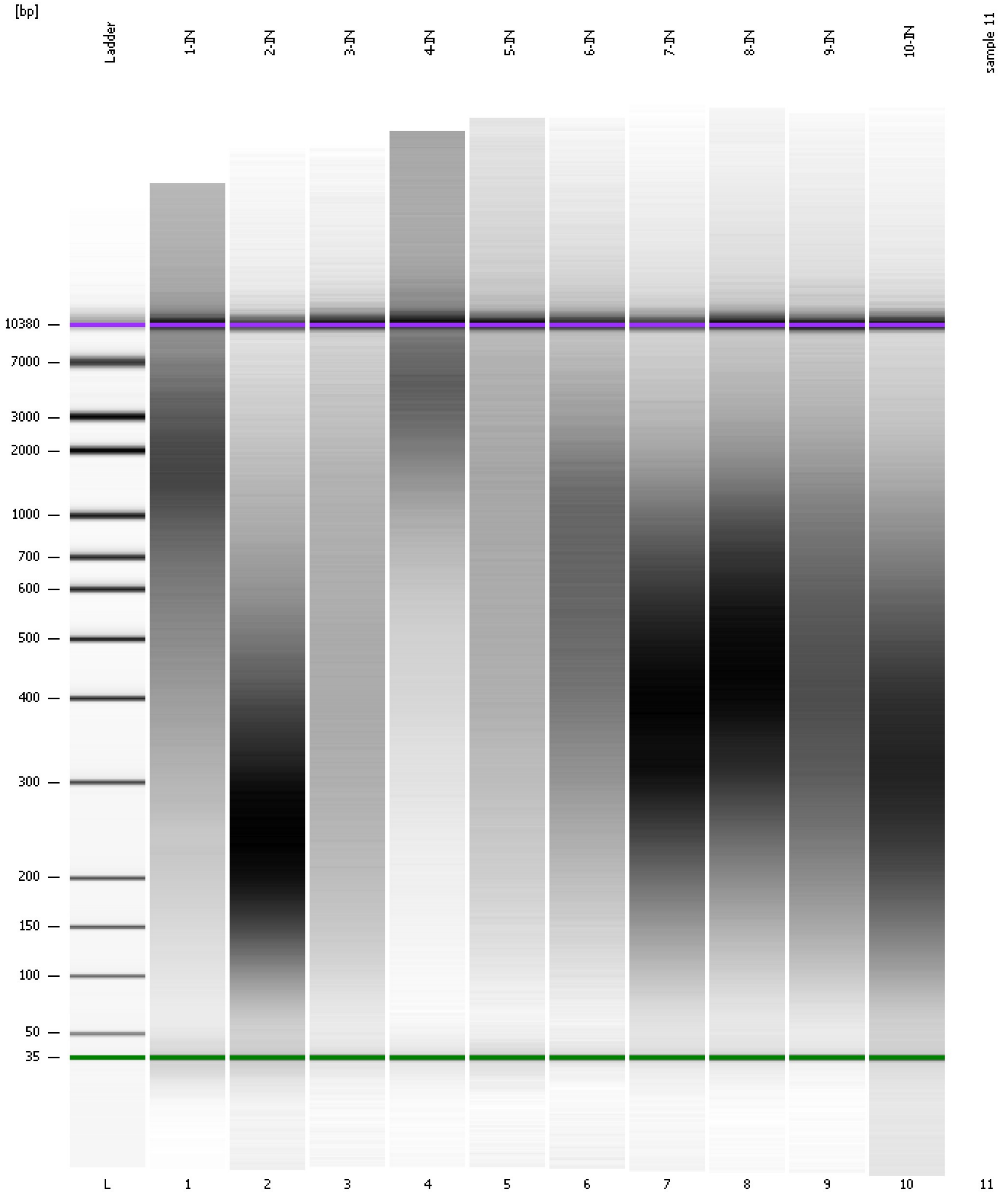
Region table for sample 10 : 10-IN

From [bp]	To [bp]	Average Size [bp]	Molarity [pmol/l]	Conc. [pg/μl]	Corr. Area	% of Total	Size distribution in CV [%]	Color
200	1,000	410	13,201.0	2,941.31	2,021.7	72	40.4	

Assay Class: High Sensitivity DNA Assay
Data Path: C:\...ents and Settings\Bioanalyzer\2012-07-05\2012-07-05_003.xad

Created: 7/5/2012 2:16:04 PM
Modified: 7/5/2012 2:54:32 PM

Gel Image



Assay Class: High Sensitivity DNA Assay
Data Path: C:\...ents and Settings\Bioanalyzer\2012-07-05\2012-07-05_003.xad

Created: 7/5/2012 2:16:04 PM
Modified: 7/5/2012 2:54:32 PM

Invalid Samples

Sample 11 has not been run, no results available.

Assay Class: High Sensitivity DNA Assay
 Data Path: C:\...ents and Settings\Bioanalyzer\2012-07-05\2012-07-05_003.xad

Created: 7/5/2012 2:16:04 PM
 Modified: 7/5/2012 2:54:32 PM

Run Logbook

Description	Number	Source	Category	Sub Category	Time	Time Zone	User	Host
Run ended on port 1 (Number of wells acquired: 11)		Instrument	Run		7/5/2012 2:54:30 PM	(GMT --07:00) Pacific Standard Time	UC Davis	D8XSMGH1
Run started on port 1 (File: C:\Documents and Settings\Bioanalyzer\2012-07-05\2012-07-05_003.xad)		Instrument	Run		7/5/2012 2:16:09 PM	(GMT --07:00) Pacific Standard Time	UC Davis	D8XSMGH1
Product Number : G2938B		Instrument	Run		7/5/2012 2:16:09 PM	(GMT --07:00) Pacific Standard Time	UC Davis	D8XSMGH1
Name :		Instrument	Run		7/5/2012 2:16:09 PM	(GMT --07:00) Pacific Standard Time	UC Davis	D8XSMGH1
Vendor : Agilent Technologies		Instrument	Run		7/5/2012 2:16:09 PM	(GMT --07:00) Pacific Standard Time	UC Davis	D8XSMGH1
Serial# : DE13701086		Instrument	Run		7/5/2012 2:16:09 PM	(GMT --07:00) Pacific Standard Time	UC Davis	D8XSMGH1
Firmware : C.01.069		Instrument	Run		7/5/2012 2:16:09 PM	(GMT --07:00) Pacific Standard Time	UC Davis	D8XSMGH1
Cartridge : Electrode		Instrument	Run		7/5/2012 2:16:09 PM	(GMT --07:00) Pacific Standard Time	UC Davis	D8XSMGH1