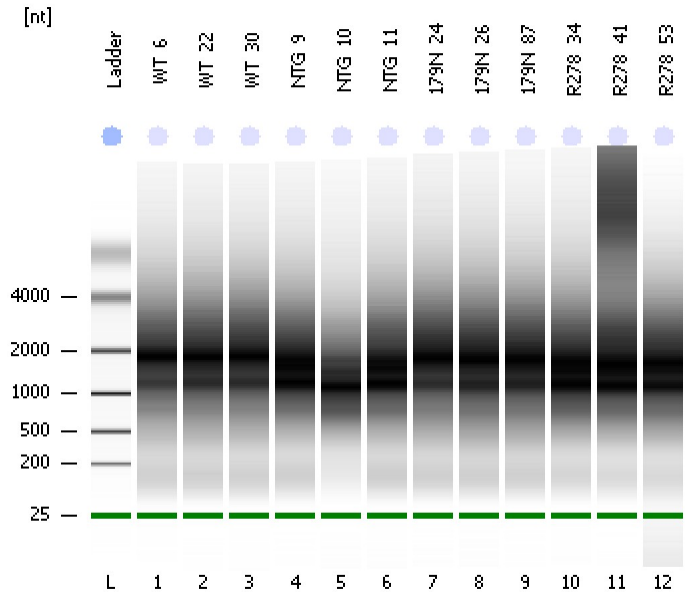


Assay Class: Eukaryote Total RNA Nano
Data Path: C:\...ents and Settings\Bioanalyzer\2012-07-06\2012-07-06_002.xad

Created: 7/6/2012 3:18:23 PM
Modified: 7/9/2012 4:42:51 PM

Electrophoresis File Run Summary



Instrument Information:

Instrument Name: DE13701086 Firmware: C.01.069
Serial#: DE13701086 Type: G2938B

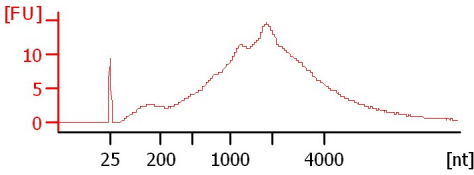
Assay Information:

Assay Origin Path: C:\Program Files\Agilent\2100 bioanalyzer\2100 expert\assays\RNA\Eukaryote Total RNA Nano Series II.xsy
Assay Class: Eukaryote Total RNA Nano
Version: 2.6
Assay Comments: Total RNA Analysis ng sensitivity (Eukaryote)
© Copyright 2003 - 2009 Agilent Technologies, Inc.

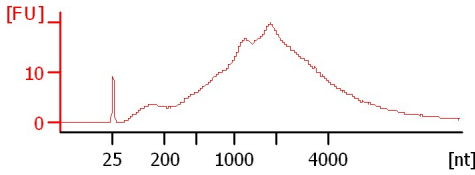
Chip Information:

Chip Lot #: Reagent Kit Lot #: Chip Comments:

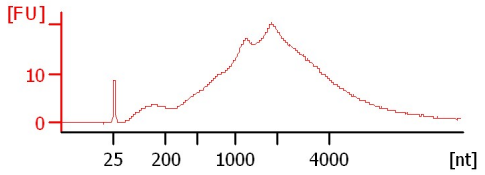
WT_6
RIN: 4.50



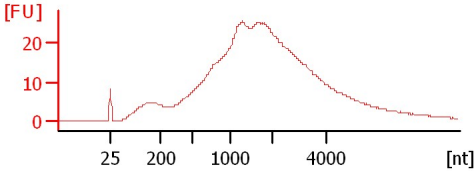
WT_22
RIN: 3.20



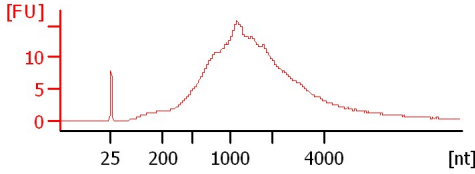
WT_30
RIN: 4.40



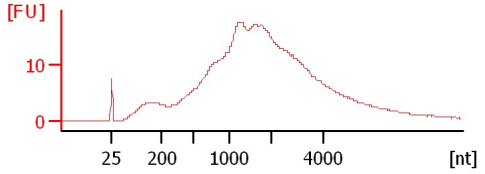
NTG_9
RIN: 2.80



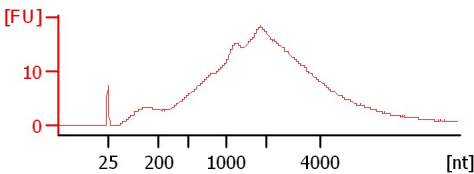
NTG_10
RIN: 3.70



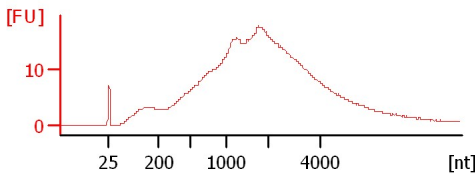
NTG_11
RIN: 2.70



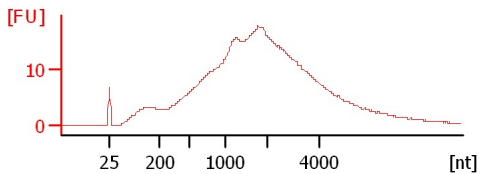
179N_24
RIN: 4.20



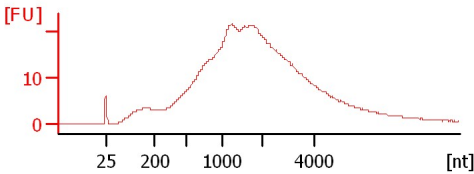
179N_26
RIN: 3.90



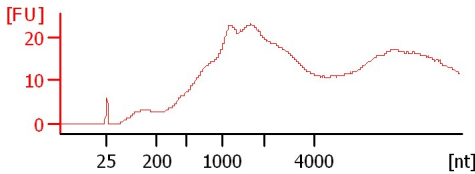
179N_87
RIN: 3.60



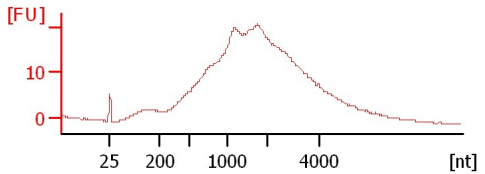
R278_34
RIN: 2.50



R278_41
RIN: 2.30



R278_53
RIN: 2.50



Assay Class: Eukaryote Total RNA Nano
 Data Path: C:\...ents and Settings\Bioanalyzer\2012-07-06\2012-07-06_002.xad

Created: 7/6/2012 3:18:23 PM
 Modified: 7/9/2012 4:42:51 PM

Electrophoresis File Run Summary (Chip Summary)

Sample Name	Sample Comment	Status	Result Label	Result Color
WT_6		✓	RIN: 4.50	
WT_22		✓	RIN: 3.20	
WT_30		✓	RIN: 4.40	
NTG_9		✓	RIN: 2.80	
NTG_10		✓	RIN: 3.70	
NTG_11		✓	RIN: 2.70	
179N_24		✓	RIN: 4.20	
179N_26		✓	RIN: 3.90	
179N_87		✓	RIN: 3.60	
R278_34		✓	RIN: 2.50	
R278_41		✓	RIN: 2.30	
R278_53		✓	RIN: 2.50	
Ladder		✓	All Other Samples	

Chip Lot #

Reagent Kit Lot #

Chip Comments :

Assay Class: Eukaryote Total RNA Nano
Data Path: C:\...ents and Settings\Bioanalyzer\2012-07-06\2012-07-06_002.xad

Created: 7/6/2012 3:18:23 PM
Modified: 7/9/2012 4:42:51 PM

Electrophoresis Assay Details

General Analysis Settings

Number of Available Sample and Ladder Wells (Max.) : 13
Minimum Visible Range [s] : 17
Maximum Visible Range [s] : 70
Start Analysis Time Range [s] : 19
End Analysis Time Range [s] : 69
Ladder Concentration [ng/μl] : 150
Lower Marker Concentration [ng/μl] : 0
Upper Marker Concentration [ng/μl] : 0
Used Lower Marker for Quantitation
Standard Curve Fit is Logarithmic
Show Data Aligned to Lower Marker

Integrator Settings

Integration Start Time [s] : 19
Integration End Time [s] : 69
Slope Threshold : 0.6
Height Threshold [FU] : 0.5
Area Threshold : 0.2
Width Threshold [s] : 0.01
Baseline Plateau [s] : 6

Filter Settings

Filter Width [s] : 0.5
Polynomial Order : 4

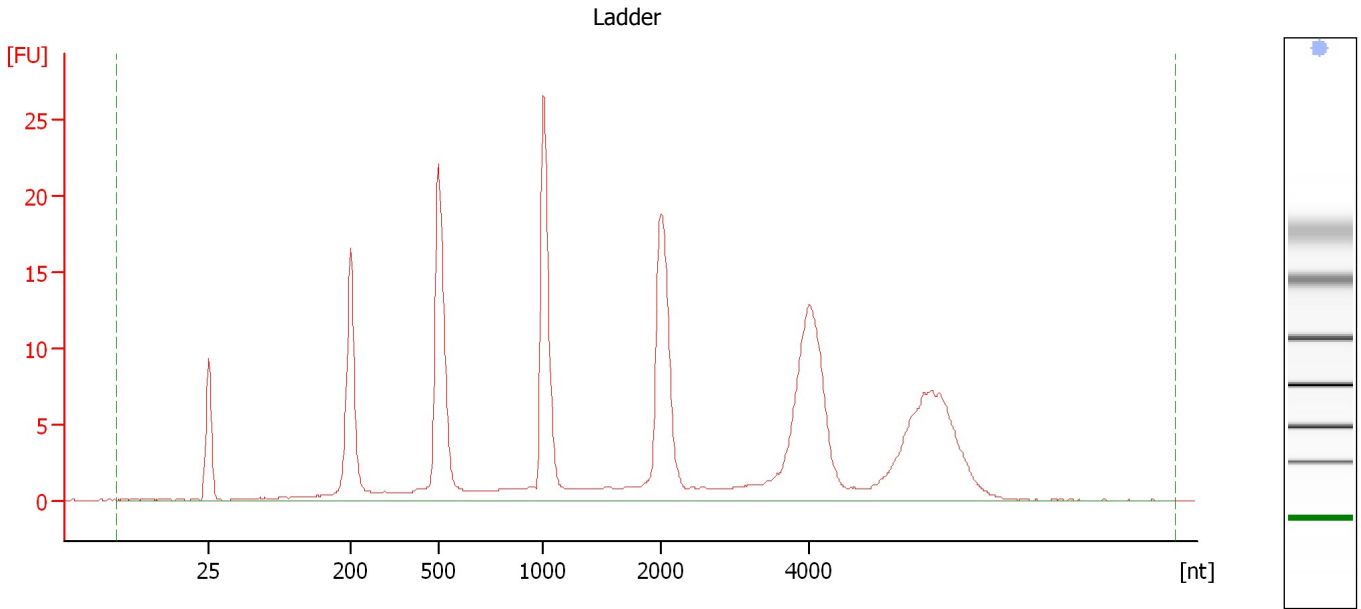
Ladder

Ladder Peak	Size
1	25
2	200
3	500
4	1000
5	2000
6	4000

Assay Class: Eukaryote Total RNA Nano
Data Path: C:\...ents and Settings\Bioanalyzer\2012-07-06\2012-07-06_002.xad

Created: 7/6/2012 3:18:23 PM
Modified: 7/9/2012 4:42:51 PM

Electropherogram Summary



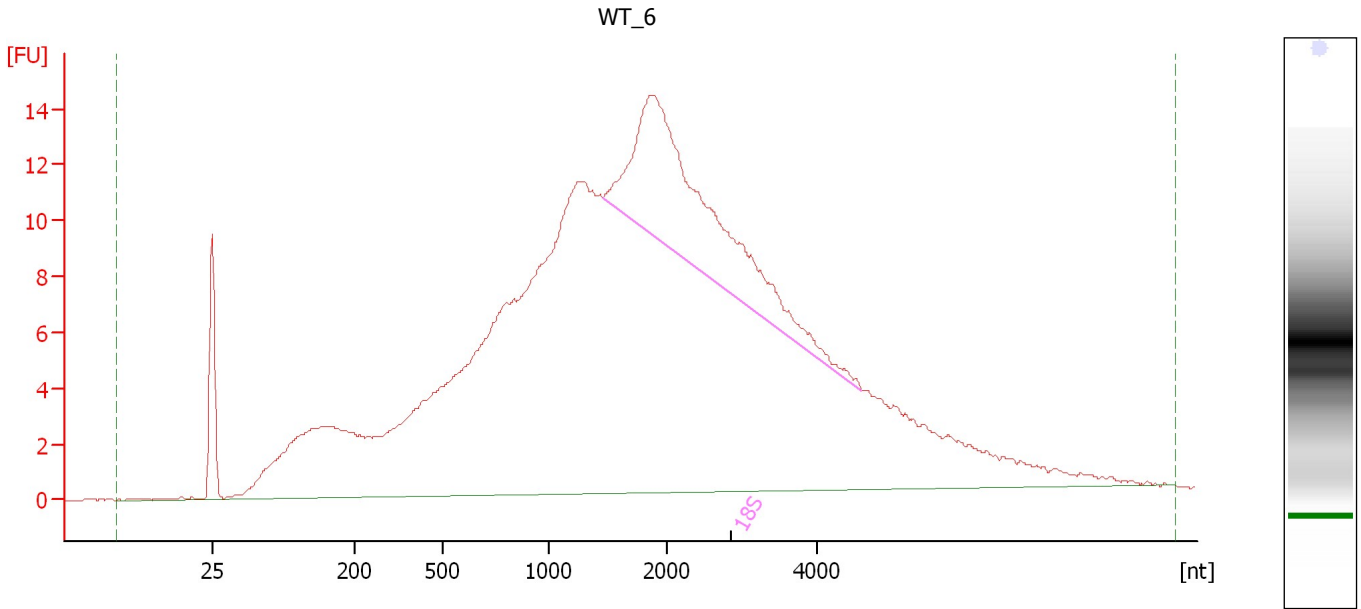
Overall Results for Ladder

RNA Area:	223.2	Result Flagging Color:	
RNA Concentration:	150 ng/μl	Result Flagging Label:	All Other Samples

Assay Class: Eukaryote Total RNA Nano
Data Path: C:\...ents and Settings\Bioanalyzer\2012-07-06\2012-07-06_002.xad

Created: 7/6/2012 3:18:23 PM
Modified: 7/9/2012 4:42:51 PM

Electropherogram Summary Continued ...



Overall Results for sample 1 : WT_6

RNA Area:	472.4	RNA Integrity Number (RIN):	4.5 (B.02.08)
RNA Concentration:	317 ng/μl	Result Flagging Color:	
rRNA Ratio [28s / 18s]:	0.0	Result Flagging Label:	RIN: 4.50

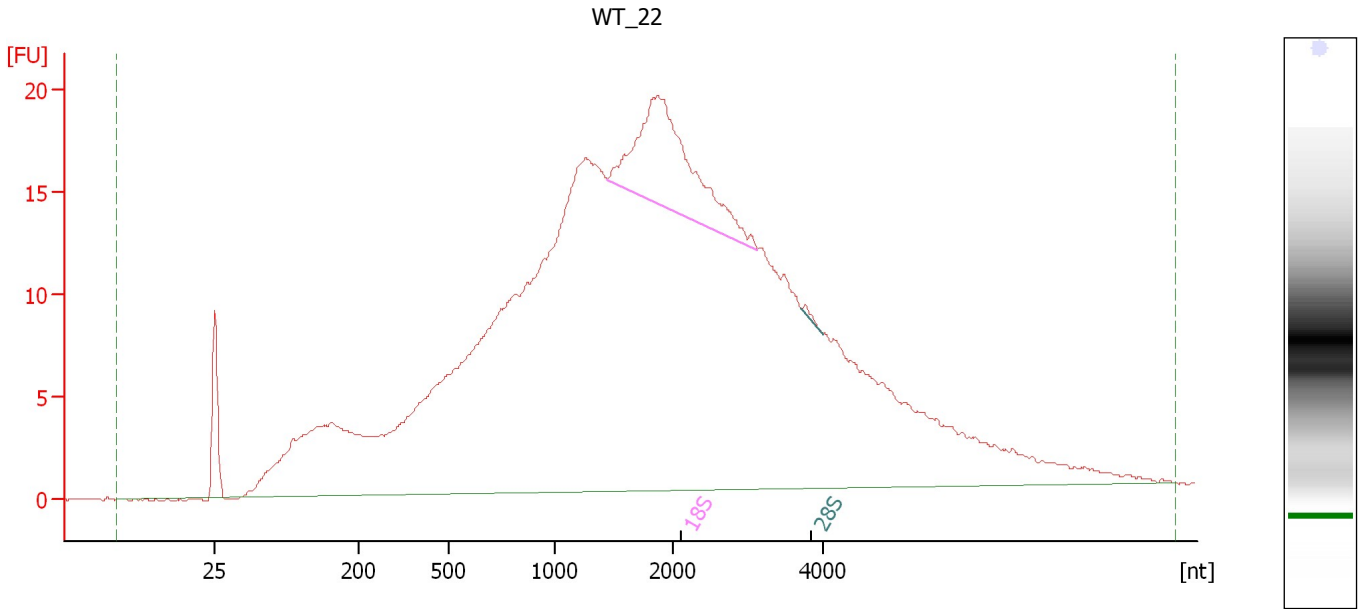
Fragment table for sample 1 : WT_6

Name	Start Size [nt]	End Size [nt]	Area	% of total Area
18S	1,451	4,607	47.4	10.0

Assay Class: Eukaryote Total RNA Nano
Data Path: C:\...ents and Settings\Bioanalyzer\2012-07-06\2012-07-06_002.xad

Created: 7/6/2012 3:18:23 PM
Modified: 7/9/2012 4:42:51 PM

Electropherogram Summary Continued ...



Overall Results for sample 2 : WT_22

RNA Area:	670.5	RNA Integrity Number (RIN):	3.2 (B.02.08)
RNA Concentration:	451 ng/μl	Result Flagging Color:	
rRNA Ratio [28s / 18s]:	0.0	Result Flagging Label:	RIN: 3.20

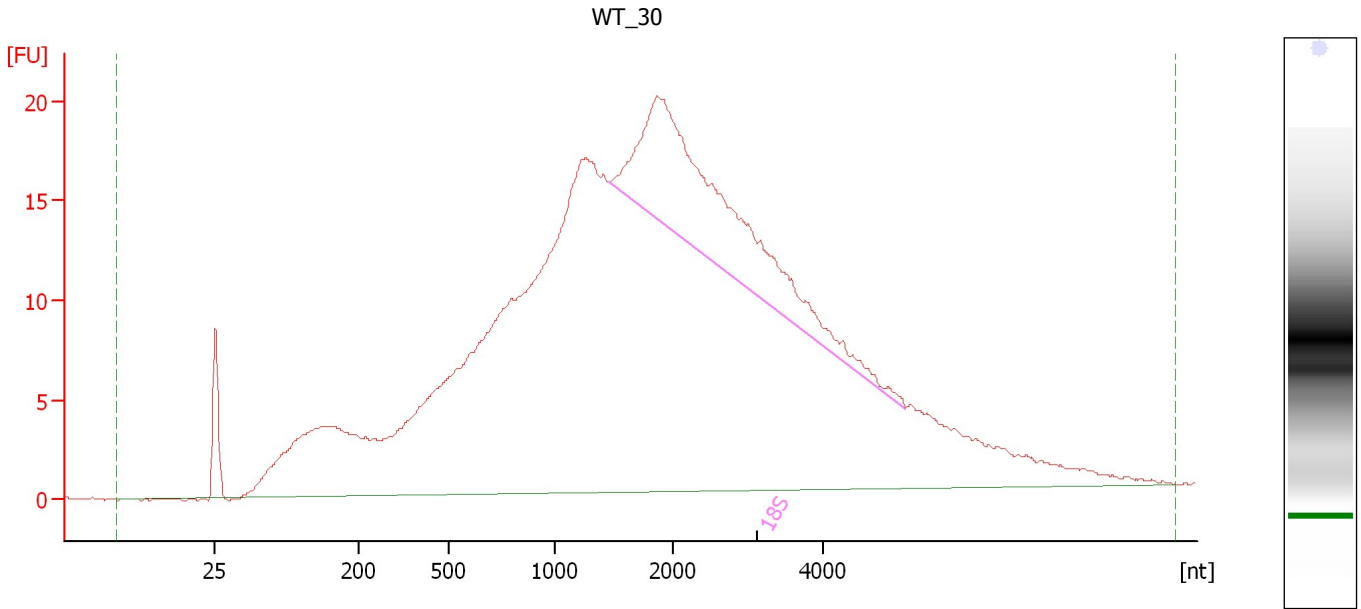
Fragment table for sample 2 : WT_22

Name	Start Size [nt]	End Size [nt]	Area	% of total Area
18S	1,449	3,117	34.8	5.2
28S	3,714	3,998	0.3	0.0

Assay Class: Eukaryote Total RNA Nano
Data Path: C:\...ents and Settings\Bioanalyzer\2012-07-06\2012-07-06_002.xad

Created: 7/6/2012 3:18:23 PM
Modified: 7/9/2012 4:42:51 PM

Electropherogram Summary Continued ...



Overall Results for sample 3 : WT_30

RNA Area:	696.2	RNA Integrity Number (RIN):	4.4 (B.02.08)
RNA Concentration:	468 ng/μl	Result Flagging Color:	
rRNA Ratio [28s / 18s]:	0.0	Result Flagging Label:	RIN: 4.40

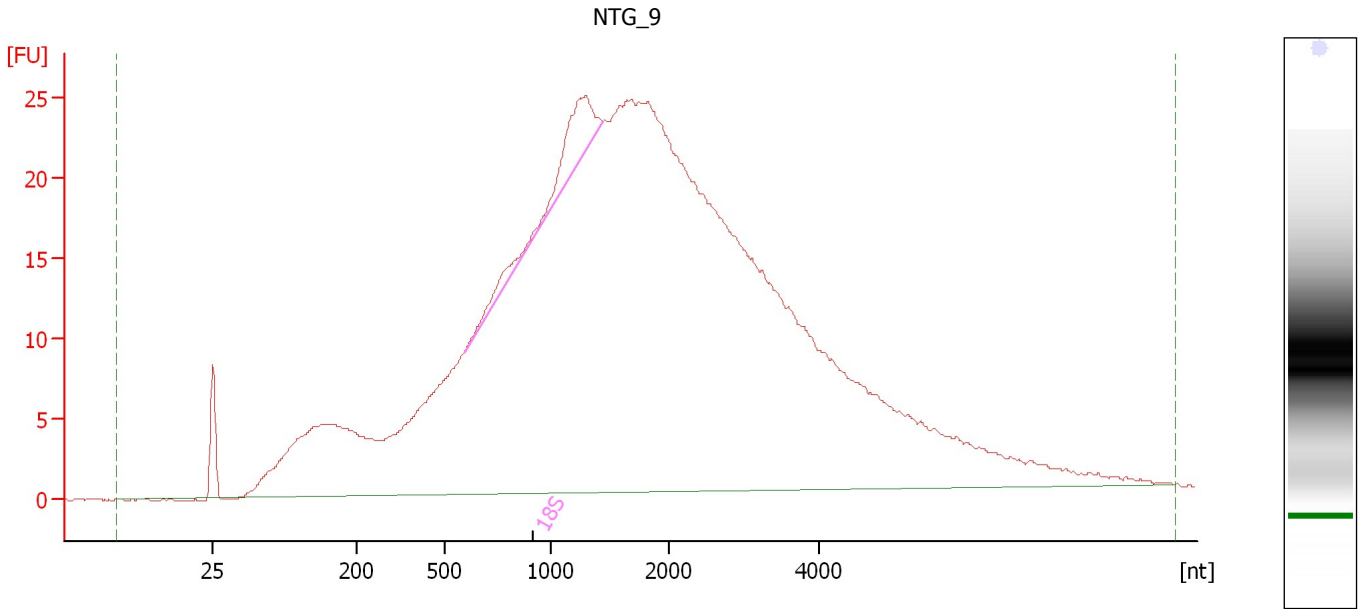
Fragment table for sample 3 : WT_30

Name	Start Size [nt]	End Size [nt]	Area	% of total Area
18S	1,458	5,092	71.1	10.2

Assay Class: Eukaryote Total RNA Nano
Data Path: C:\...ents and Settings\Bioanalyzer\2012-07-06\2012-07-06_002.xad

Created: 7/6/2012 3:18:23 PM
Modified: 7/9/2012 4:42:51 PM

Electropherogram Summary Continued ...



Overall Results for sample 4 : NTG_9

RNA Area:	888.6	RNA Integrity Number (RIN):	2.8 (B.02.08)
RNA Concentration:	597 ng/μl	Result Flagging Color:	
rRNA Ratio [28s / 18s]:	0.0	Result Flagging Label:	RIN: 2.80

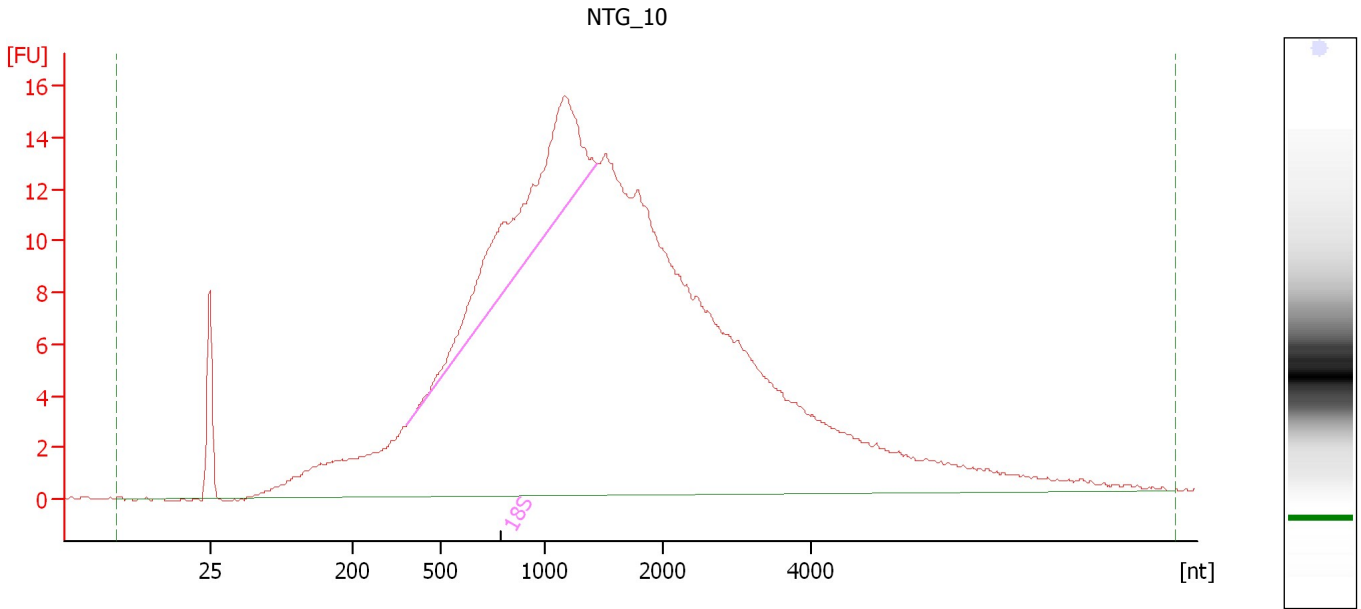
Fragment table for sample 4 : NTG_9

Name	Start Size [nt]	End Size [nt]	Area	% of total Area
18S	592	1,445	18.4	2.1

Assay Class: Eukaryote Total RNA Nano
Data Path: C:\...ents and Settings\Bioanalyzer\2012-07-06\2012-07-06_002.xad

Created: 7/6/2012 3:18:23 PM
Modified: 7/9/2012 4:42:51 PM

Electropherogram Summary Continued ...



Overall Results for sample 5 : NTG_10

RNA Area:	448.6	RNA Integrity Number (RIN):	3.7 (B.02.08)
RNA Concentration:	301 ng/μl	Result Flagging Color:	
rRNA Ratio [28s / 18s]:	0.0	Result Flagging Label:	RIN: 3.70

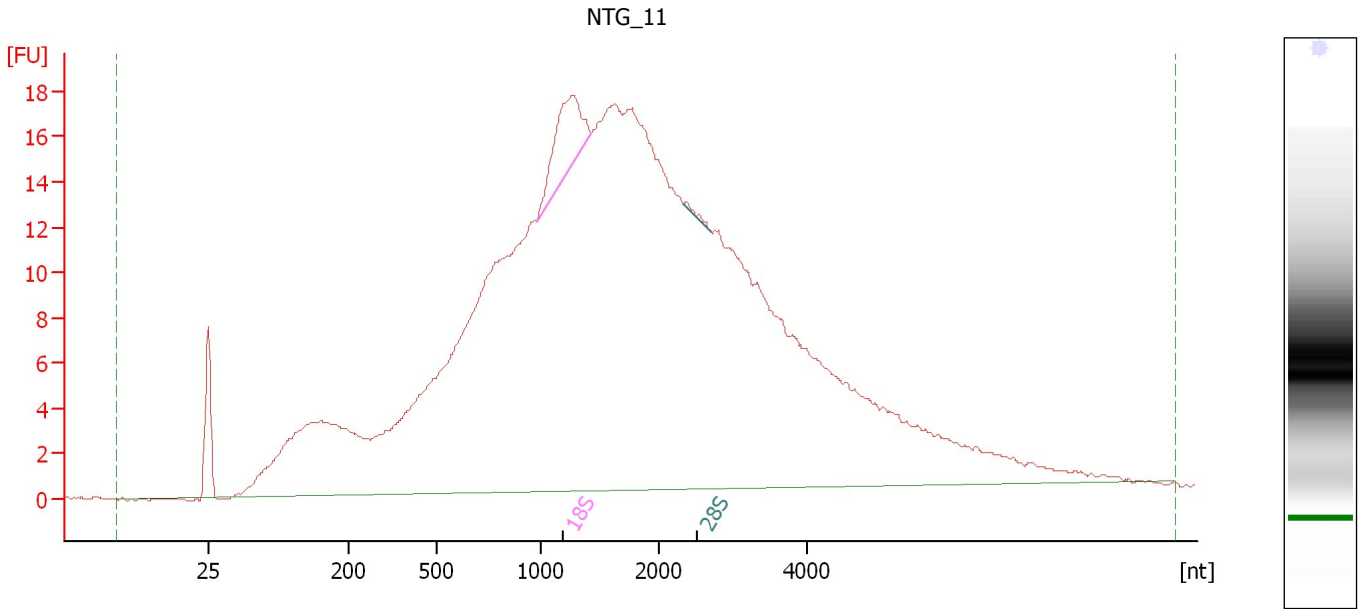
Fragment table for sample 5 : NTG_10

Name	Start Size [nt]	End Size [nt]	Area	% of total Area
18S	388	1,447	42.1	9.4

Assay Class: Eukaryote Total RNA Nano
Data Path: C:\...ents and Settings\Bioanalyzer\2012-07-06\2012-07-06_002.xad

Created: 7/6/2012 3:18:23 PM
Modified: 7/9/2012 4:42:51 PM

Electropherogram Summary Continued ...



Overall Results for sample 6 : NTG_11

RNA Area: 617.1 RNA Integrity Number (RIN): 2.7 (B.02.08)
RNA Concentration: 415 ng/μl Result Flagging Color:
rRNA Ratio [28s / 18s]: 0.0 Result Flagging Label: RIN: 2.70

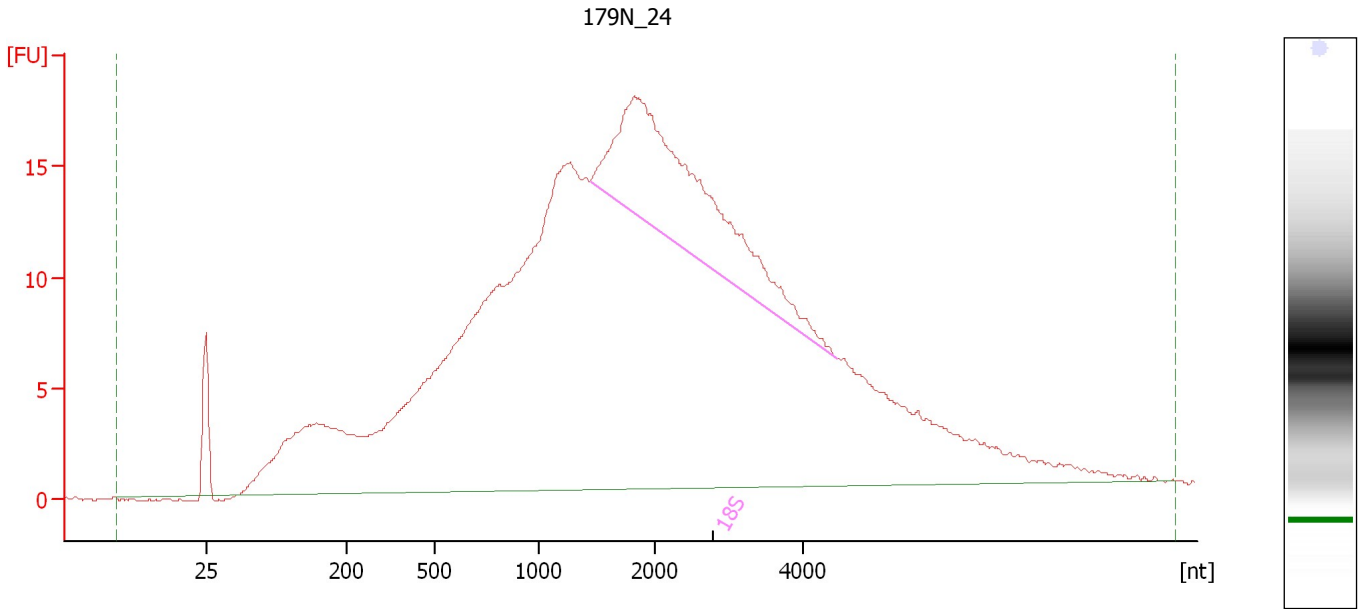
Fragment table for sample 6 : NTG_11

Name	Start Size [nt]	End Size [nt]	Area	% of total Area
18S	972	1,415	11.4	1.8
28S	2,330	2,704	0.5	0.1

Assay Class: Eukaryote Total RNA Nano
Data Path: C:\...ents and Settings\Bioanalyzer\2012-07-06\2012-07-06_002.xad

Created: 7/6/2012 3:18:23 PM
Modified: 7/9/2012 4:42:51 PM

Electropherogram Summary Continued ...



Overall Results for sample 7 : 179N_24

RNA Area:	635.0	RNA Integrity Number (RIN):	4.2 (B.02.08)
RNA Concentration:	427 ng/μl	Result Flagging Color:	
rRNA Ratio [28s / 18s]:	0.0	Result Flagging Label:	RIN: 4.20

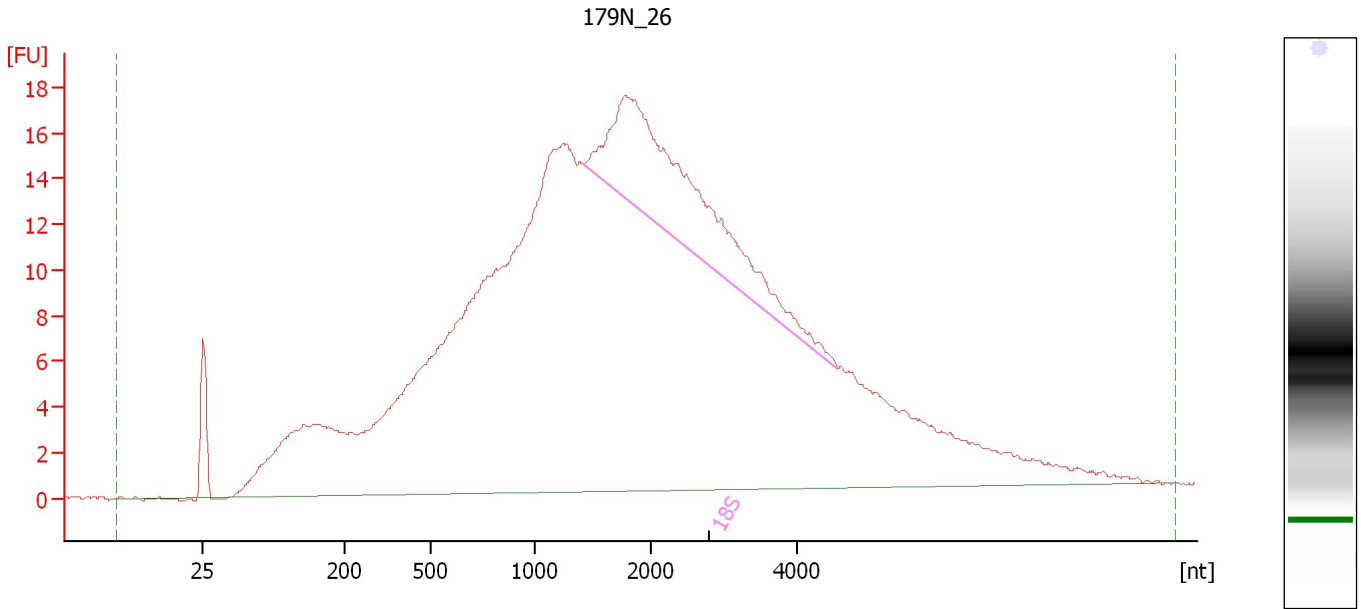
Fragment table for sample 7 : 179N_24

Name	Start Size [nt]	End Size [nt]	Area	% of total Area
18S	1,448	4,456	62.9	9.9

Assay Class: Eukaryote Total RNA Nano
Data Path: C:\...ents and Settings\Bioanalyzer\2012-07-06\2012-07-06_002.xad

Created: 7/6/2012 3:18:23 PM
Modified: 7/9/2012 4:42:51 PM

Electropherogram Summary Continued ...



Overall Results for sample 8 : 179N_26

RNA Area:	646.1	RNA Integrity Number (RIN):	3.9 (B.02.08)
RNA Concentration:	434 ng/μl	Result Flagging Color:	
rRNA Ratio [28s / 18s]:	0.0	Result Flagging Label:	RIN: 3.90

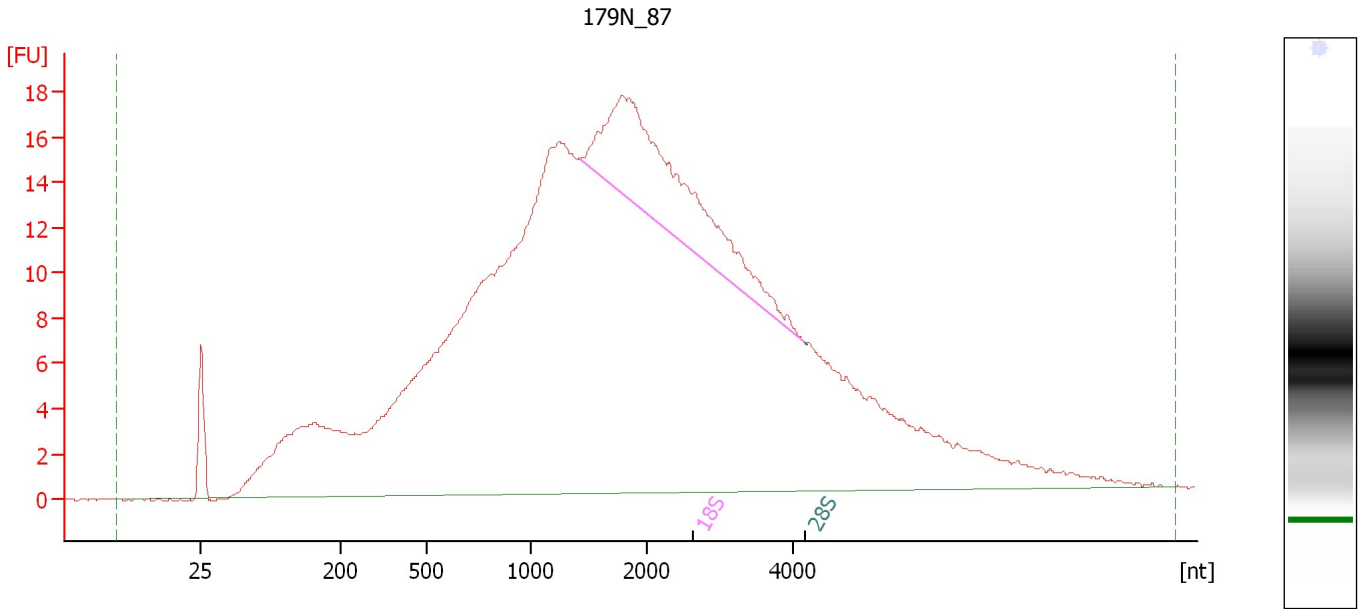
Fragment table for sample 8 : 179N_26

Name	Start Size [nt]	End Size [nt]	Area	% of total Area
18S	1,416	4,536	54.1	8.4

Assay Class: Eukaryote Total RNA Nano
Data Path: C:\...ents and Settings\Bioanalyzer\2012-07-06\2012-07-06_002.xad

Created: 7/6/2012 3:18:23 PM
Modified: 7/9/2012 4:42:51 PM

Electropherogram Summary Continued ...



Overall Results for sample 9 : 179N_87

RNA Area: 648.3 RNA Integrity Number (RIN): 3.6 (B.02.08)
RNA Concentration: 436 ng/μl Result Flagging Color:
rRNA Ratio [28s / 18s]: 0.0 Result Flagging Label: RIN: 3.60

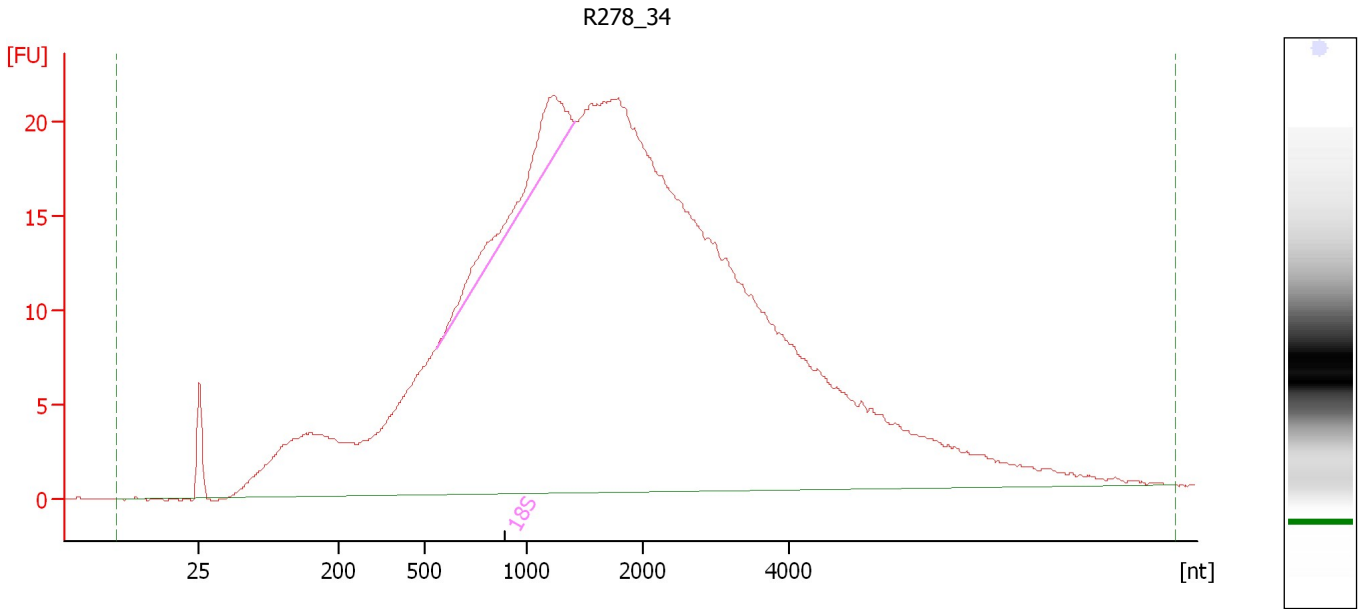
Fragment table for sample 9 : 179N_87

Name	Start Size [nt]	End Size [nt]	Area	% of total Area
18S	1,429	4,149	48.4	7.5
28S	4,179	4,149	0.0	0.0

Assay Class: Eukaryote Total RNA Nano
Data Path: C:\...ents and Settings\Bioanalyzer\2012-07-06\2012-07-06_002.xad

Created: 7/6/2012 3:18:23 PM
Modified: 7/9/2012 4:42:51 PM

Electropherogram Summary Continued ...



Overall Results for sample 10 : R278_34

RNA Area:	767.3	RNA Integrity Number (RIN):	2.5 (B.02.08, Anomaly Threshold(s) manually adapted)
RNA Concentration:	516 ng/μl	Result Flagging Color:	
rRNA Ratio [28s / 18s]:	0.0	Result Flagging Label:	RIN: 2.50

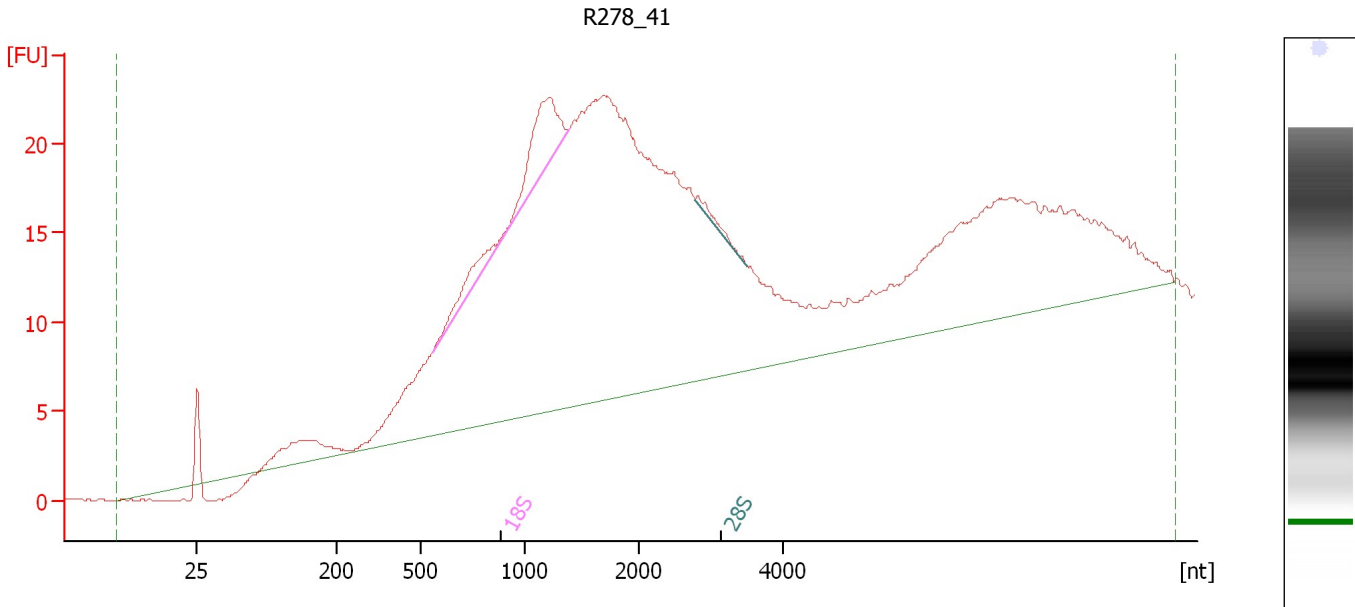
Fragment table for sample 10 : R278_34

Name	Start Size [nt]	End Size [nt]	Area	% of total Area
18S	557	1,406	19.8	2.6

Assay Class: Eukaryote Total RNA Nano
 Data Path: C:\...ents and Settings\Bioanalyzer\2012-07-06\2012-07-06_002.xad

Created: 7/6/2012 3:18:23 PM
 Modified: 7/9/2012 4:42:51 PM

Electropherogram Summary Continued ...



Overall Results for sample 11 : R278_41

RNA Area:	598.7	RNA Integrity Number (RIN):	2.3 (B.02.08, Anomaly Threshold(s) manually adapted)
RNA Concentration:	402 ng/μl	Result Flagging Color:	
rRNA Ratio [28s / 18s]:	0.1	Result Flagging Label:	RIN: 2.30

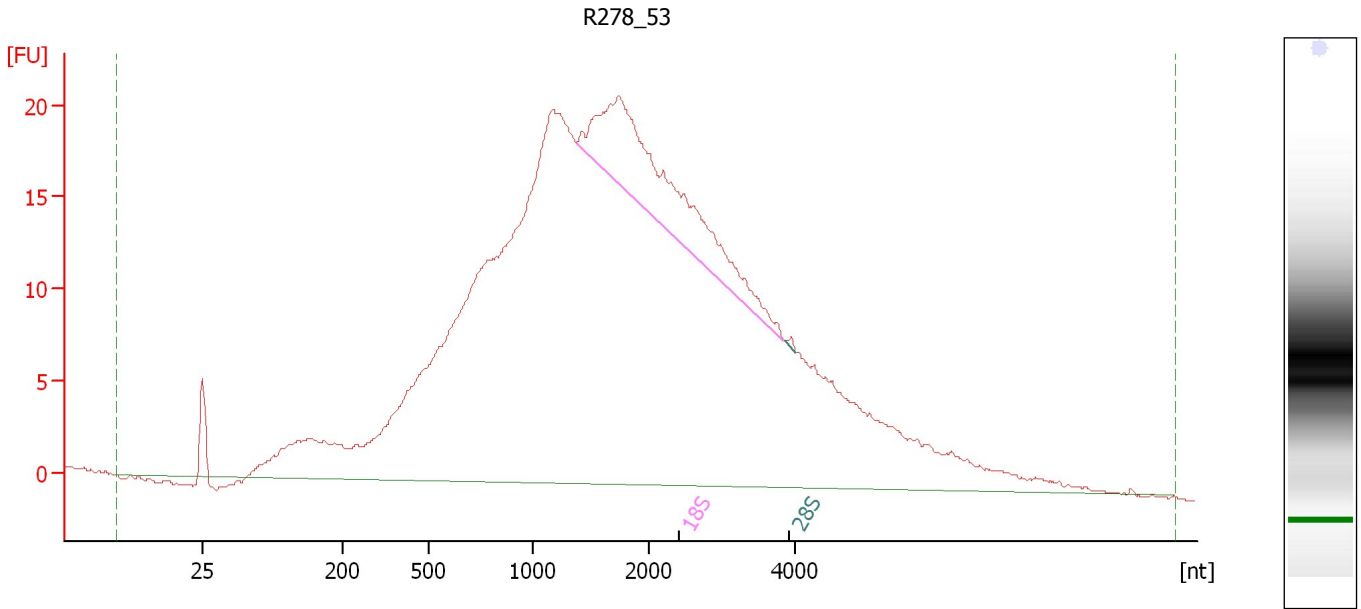
Fragment table for sample 11 : R278_41

Name	Start Size [nt]	End Size [nt]	Area	% of total Area
18S	552	1,383	19.1	3.2
28S	2,777	3,484	1.2	0.2

Assay Class: Eukaryote Total RNA Nano
Data Path: C:\...ents and Settings\Bioanalyzer\2012-07-06\2012-07-06_002.xad

Created: 7/6/2012 3:18:23 PM
Modified: 7/9/2012 4:42:51 PM

Electropherogram Summary Continued ...



Overall Results for sample 12 : R278 53

RNA Area: 716.4 RNA Integrity Number (RIN): 2.5 (B.02.08)
RNA Concentration: 481 ng/μl Result Flagging Color:
rRNA Ratio [28s / 18s]: 0.0 Result Flagging Label: RIN: 2.50

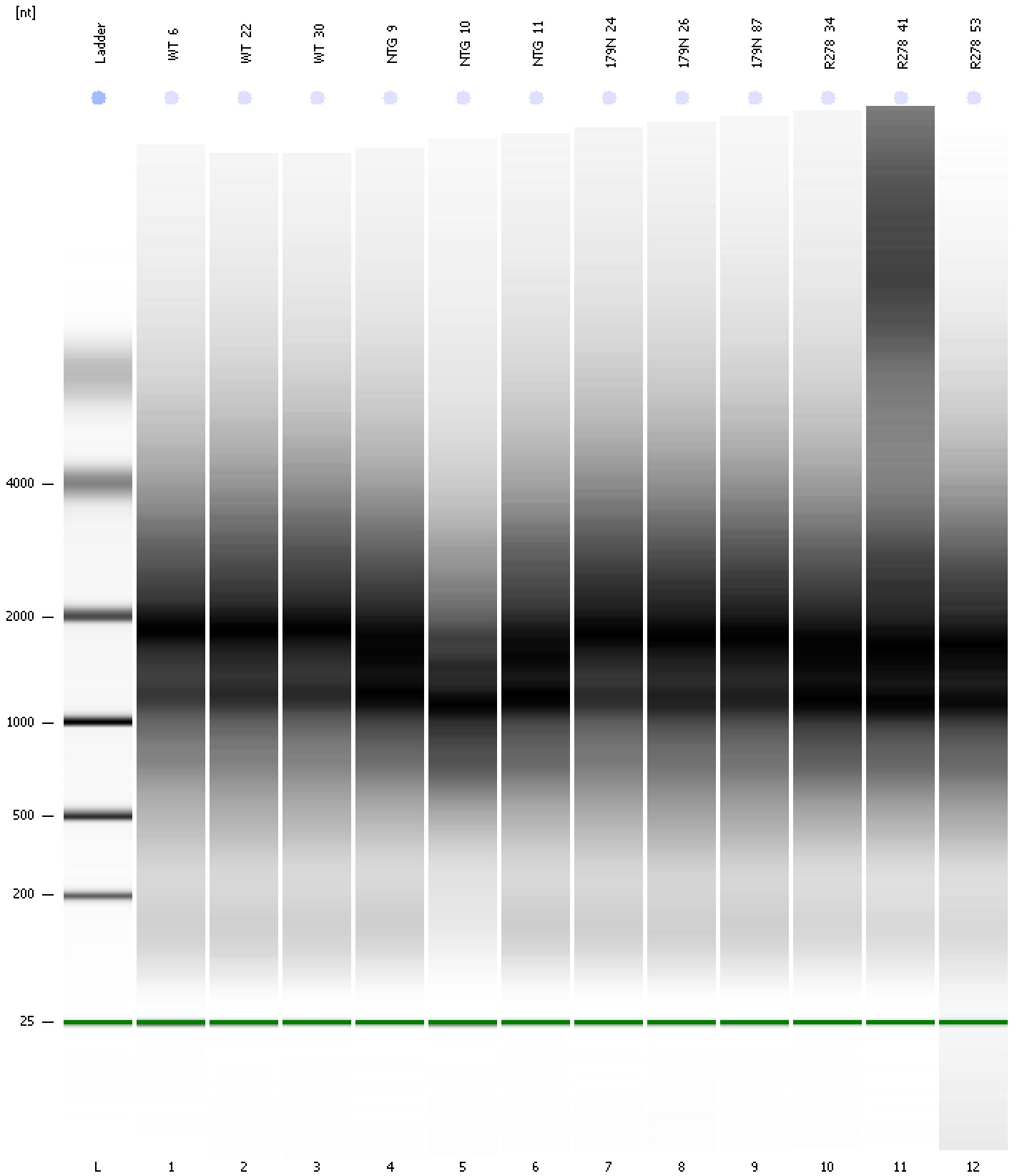
Fragment table for sample 12 : R278 53

Name	Start Size [nt]	End Size [nt]	Area	% of total Area
18S	1,376	3,840	48.4	6.8
28S	3,870	4,001	0.2	0.0

Assay Class: Eukaryote Total RNA Nano
Data Path: C:\...ents and Settings\Bioanalyzer\2012-07-06\2012-07-06_002.xad

Created: 7/6/2012 3:18:23 PM
Modified: 7/9/2012 4:42:51 PM

Gel Image



Assay Class: Eukaryote Total RNA Nano Created: 7/6/2012 3:18:23 PM
 Data Path: C:\...ents and Settings\Bioanalyzer\2012-07-06\2012-07-06_002.xad Modified: 7/9/2012 4:42:51 PM

Run Logbook

Description	Number	Source	Category	Sub Category	Time	Time Zone	User	Host
Run ended on port 1 (Number of wells acquired: 13)		Instrument	Run		7/6/2012 3:42:13 PM	(GMT --07:00) Pacific Standard Time	UC Davis	D8XSMGH1
Run started on port 1 (File: C:\Documents and Settings\Bioanalyzer\2012-07-06\2012-07-06_002.xad)		Instrument	Run		7/6/2012 3:18:29 PM	(GMT --07:00) Pacific Standard Time	UC Davis	D8XSMGH1
Product Number : G2938B		Instrument	Run		7/6/2012 3:18:29 PM	(GMT --07:00) Pacific Standard Time	UC Davis	D8XSMGH1
Name :		Instrument	Run		7/6/2012 3:18:29 PM	(GMT --07:00) Pacific Standard Time	UC Davis	D8XSMGH1
Vendor : Agilent Technologies		Instrument	Run		7/6/2012 3:18:29 PM	(GMT --07:00) Pacific Standard Time	UC Davis	D8XSMGH1
Serial# : DE13701086		Instrument	Run		7/6/2012 3:18:29 PM	(GMT --07:00) Pacific Standard Time	UC Davis	D8XSMGH1
Firmware : C.01.069		Instrument	Run		7/6/2012 3:18:29 PM	(GMT --07:00) Pacific Standard Time	UC Davis	D8XSMGH1
Cartridge : Electrode		Instrument	Run		7/6/2012 3:18:29 PM	(GMT --07:00) Pacific Standard Time	UC Davis	D8XSMGH1