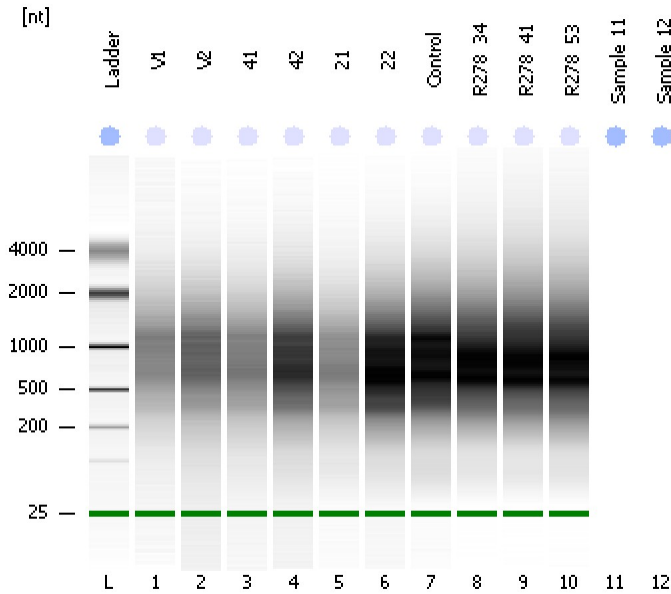


Assay Class: Eukaryote Total RNA Nano
Data Path: C:\...ents and Settings\Bioanalyzer\2012-07-06\2012-07-06_003.xad

Created: 7/6/2012 4:04:39 PM
Modified: 7/6/2012 4:25:46 PM

Electrophoresis File Run Summary



Instrument Information:

Instrument Name: DE13701086 Firmware: C.01.069
Serial#: DE13701086 Type: G2938B

Assay Information:

Assay Origin Path: C:\Program Files\Agilent\2100 bioanalyzer\2100 expert\assays\RNA\Eukaryote Total RNA Nano Series II.xsy

Assay Class: Eukaryote Total RNA Nano

Version: 2.6

Assay Comments: Total RNA Analysis ng sensitivity (Eukaryote)

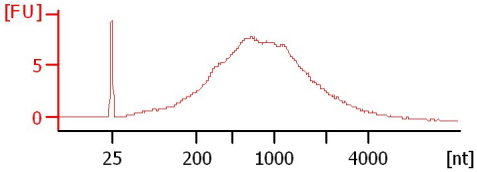
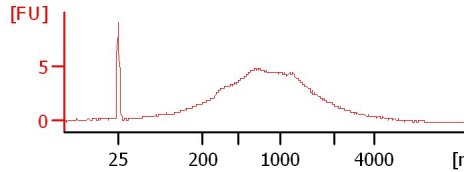
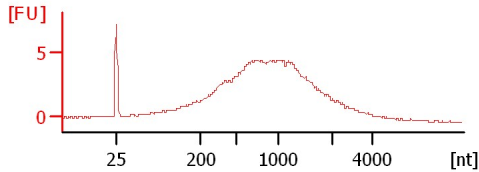
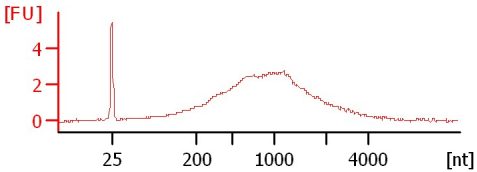
© Copyright 2003 - 2009 Agilent Technologies, Inc.

Chip Information:

Chip Lot #:

Reagent Kit Lot #:

Chip Comments:



Assay Class: Eukaryote Total RNA Nano
 Data Path: C:\...ents and Settings\Bioanalyzer\2012-07-06\2012-07-06_003.xad

Created: 7/6/2012 4:04:39 PM
 Modified: 7/6/2012 4:25:46 PM

Electrophoresis File Run Summary (Chip Summary)

Sample Name	Sample Comment	Status	Result Label	Result Color
V1		✓	RIN: 2.40	
V2		✓	RIN: 2.50	
41		✓	RIN: 5.30	
42		✓	RIN: 2.90	
21		✓	RIN: 3.10	
22		✓	RIN: 2.40	
Control		✓	RIN: 3.10	
R278_34		✓	RIN: 2.90	
R278_41		✓	RIN: 2.70	
R278_53		✓	RIN: 2.80	
Sample 11				
Sample 12				
Ladder		✓	All Other Samples	

Chip Lot #

Reagent Kit Lot #

Chip Comments :

Assay Class: Eukaryote Total RNA Nano
Data Path: C:\...ents and Settings\Bioanalyzer\2012-07-06\2012-07-06_003.xad

Created: 7/6/2012 4:04:39 PM
Modified: 7/6/2012 4:25:46 PM

Electrophoresis Assay Details

General Analysis Settings

Number of Available Sample and Ladder Wells (Max.) : 13
Minimum Visible Range [s] : 17
Maximum Visible Range [s] : 70
Start Analysis Time Range [s] : 19
End Analysis Time Range [s] : 69
Ladder Concentration [ng/μl] : 150
Lower Marker Concentration [ng/μl] : 0
Upper Marker Concentration [ng/μl] : 0
Used Lower Marker for Quantitation
Standard Curve Fit is Logarithmic
Show Data Aligned to Lower Marker

Integrator Settings

Integration Start Time [s] : 19
Integration End Time [s] : 69
Slope Threshold : 0.6
Height Threshold [FU] : 0.5
Area Threshold : 0.2
Width Threshold [s] : 0.5
Baseline Plateau [s] : 6

Filter Settings

Filter Width [s] : 0.5
Polynomial Order : 4

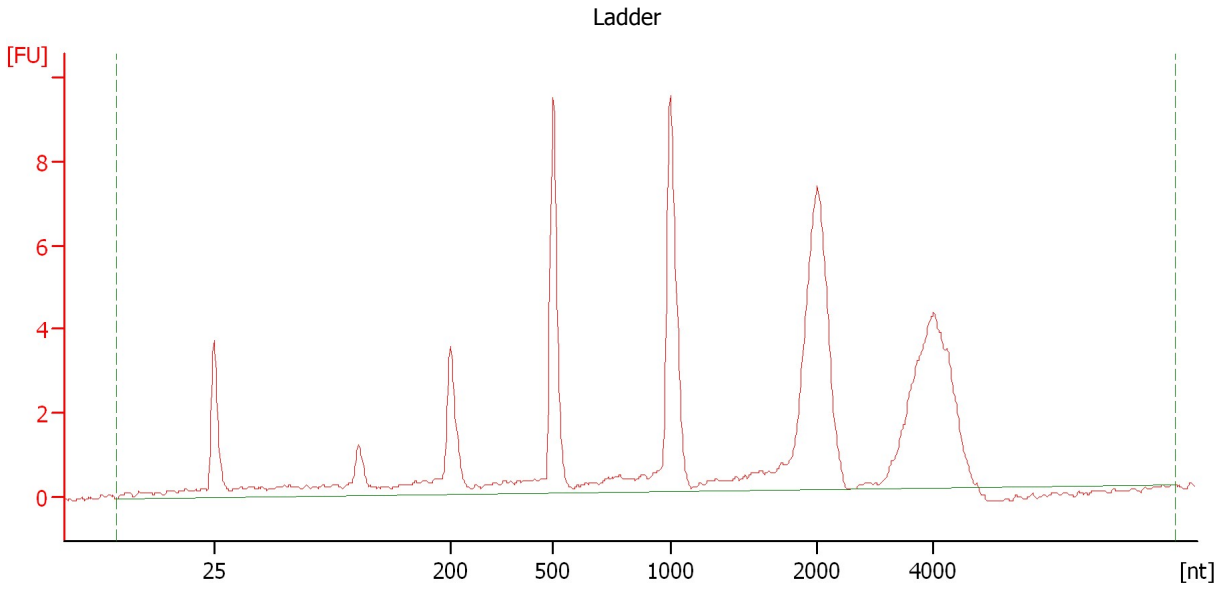
Ladder

Ladder Peak	Size
1	25
2	200
3	500
4	1000
5	2000
6	4000

Assay Class: Eukaryote Total RNA Nano
Data Path: C:\...ents and Settings\Bioanalyzer\2012-07-06\2012-07-06_003.xad

Created: 7/6/2012 4:04:39 PM
Modified: 7/6/2012 4:25:46 PM

Electropherogram Summary



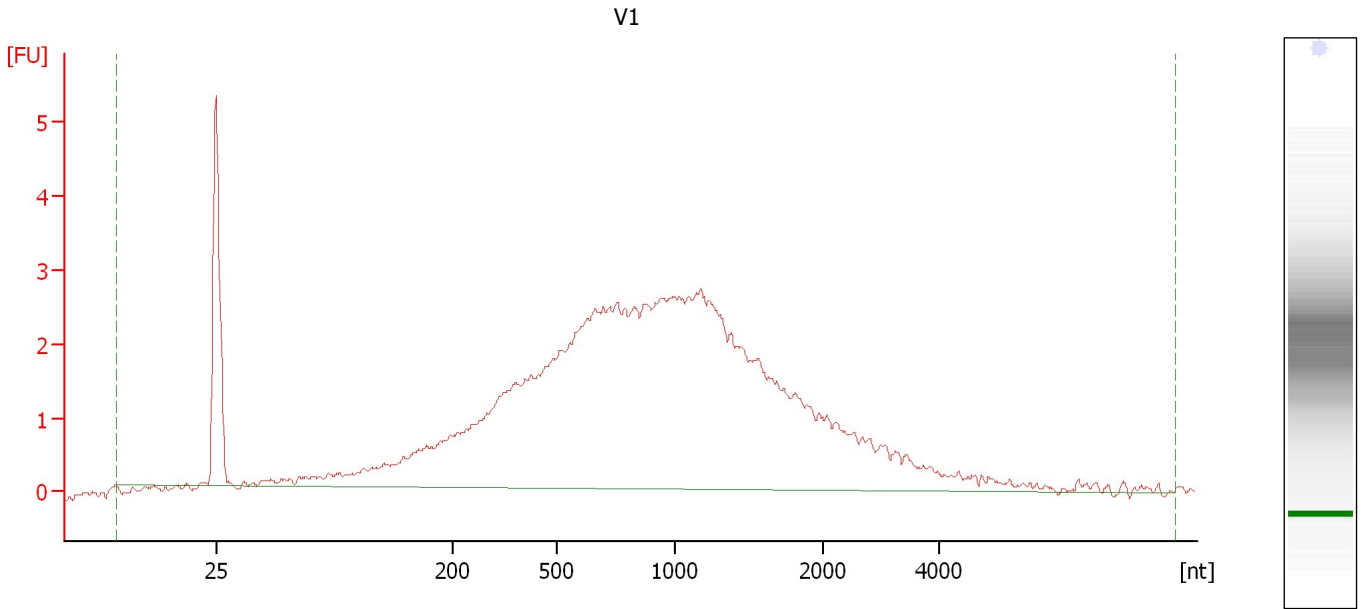
Overall Results for Ladder

RNA Area:	78.9	Result Flagging Color:	
RNA Concentration:	150 ng/μl	Result Flagging Label:	All Other Samples

Assay Class: Eukaryote Total RNA Nano
Data Path: C:\...ents and Settings\Bioanalyzer\2012-07-06\2012-07-06_003.xad

Created: 7/6/2012 4:04:39 PM
Modified: 7/6/2012 4:25:46 PM

Electropherogram Summary Continued ...



Overall Results for sample 1 : V1

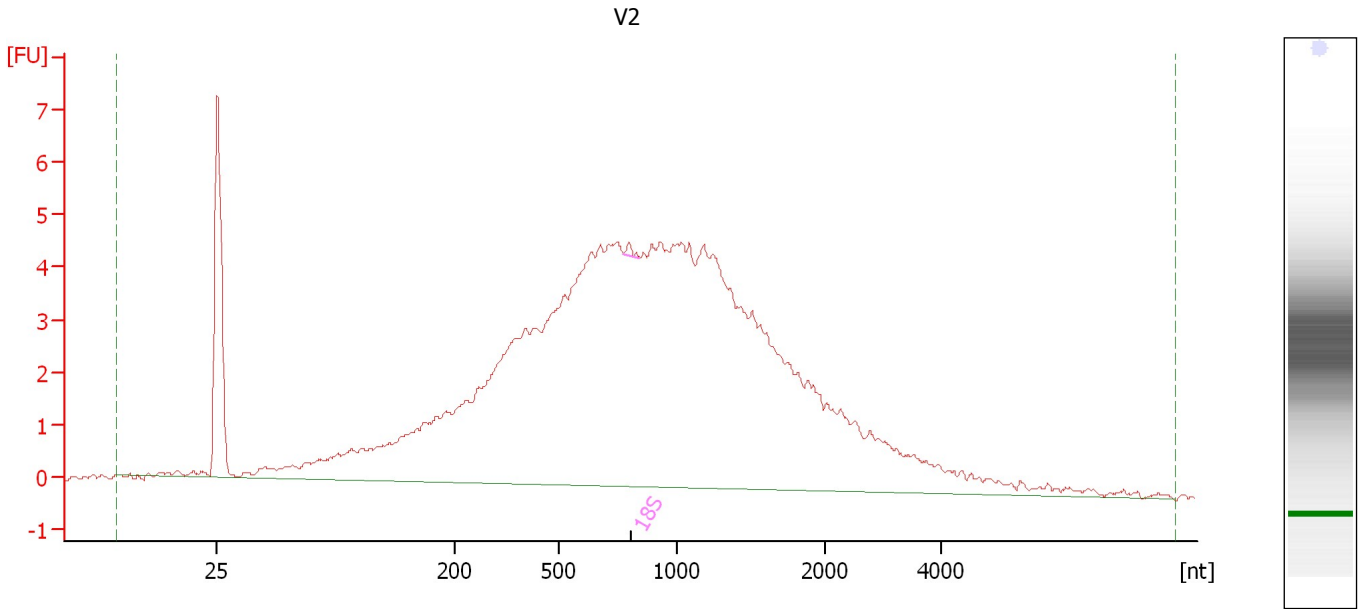
RNA Area: 87.5
RNA Concentration: 166 ng/μl
rRNA Ratio [28s / 18s]: 0.0

RNA Integrity Number (RIN): 2.4 (B.02.08, Anomaly Threshold(s) manually adapted)
Result Flagging Color:
Result Flagging Label: RIN: 2.40

Assay Class: Eukaryote Total RNA Nano
Data Path: C:\...ents and Settings\Bioanalyzer\2012-07-06\2012-07-06_003.xad

Created: 7/6/2012 4:04:39 PM
Modified: 7/6/2012 4:25:46 PM

Electropherogram Summary Continued ...



Overall Results for sample 2 : V2

RNA Area:	166.0	RNA Integrity Number (RIN):	2.5 (B.02.08)
RNA Concentration:	316 ng/μl	Result Flagging Color:	
rRNA Ratio [28s / 18s]:	0.0	Result Flagging Label:	RIN: 2.50

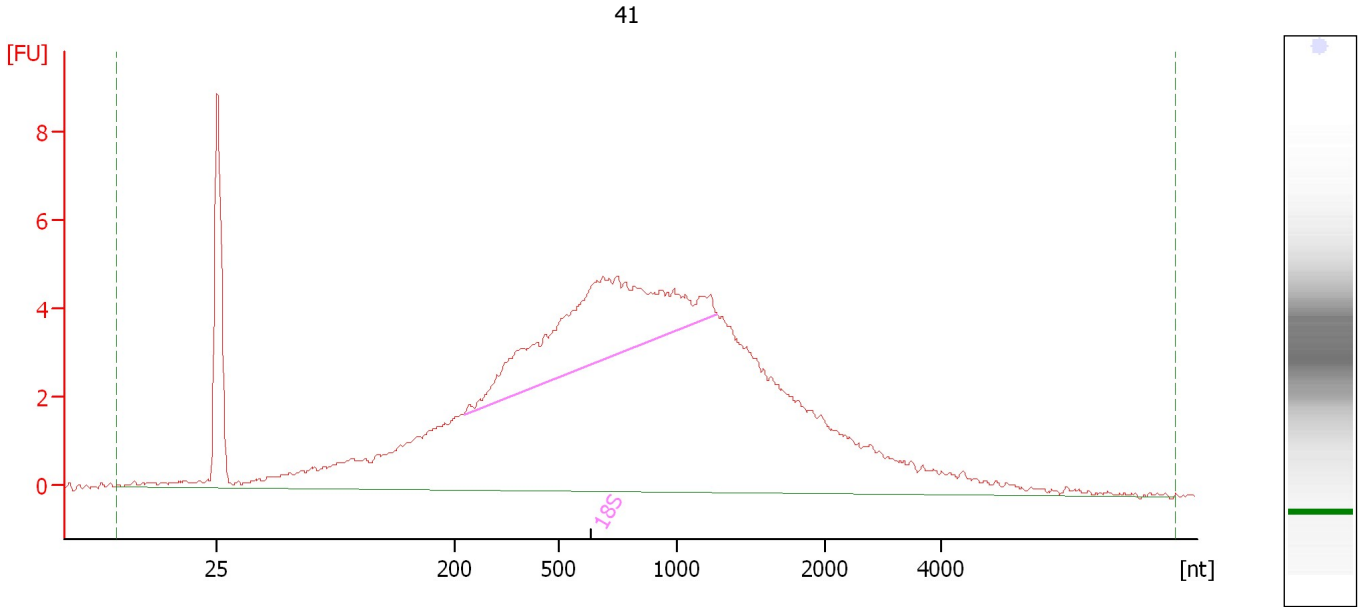
Fragment table for sample 2 : V2

Name	Start Size [nt]	End Size [nt]	Area	% of total Area
18S	775	838	0.1	0.1

Assay Class: Eukaryote Total RNA Nano
Data Path: C:\...ents and Settings\Bioanalyzer\2012-07-06\2012-07-06_003.xad

Created: 7/6/2012 4:04:39 PM
Modified: 7/6/2012 4:25:46 PM

Electropherogram Summary Continued ...



Overall Results for sample 3 : 41

RNA Area:	172.3	RNA Integrity Number (RIN):	5.3 (B.02.08)
RNA Concentration:	328 ng/μl	Result Flagging Color:	
rRNA Ratio [28s / 18s]:	0.0	Result Flagging Label:	RIN: 5.30

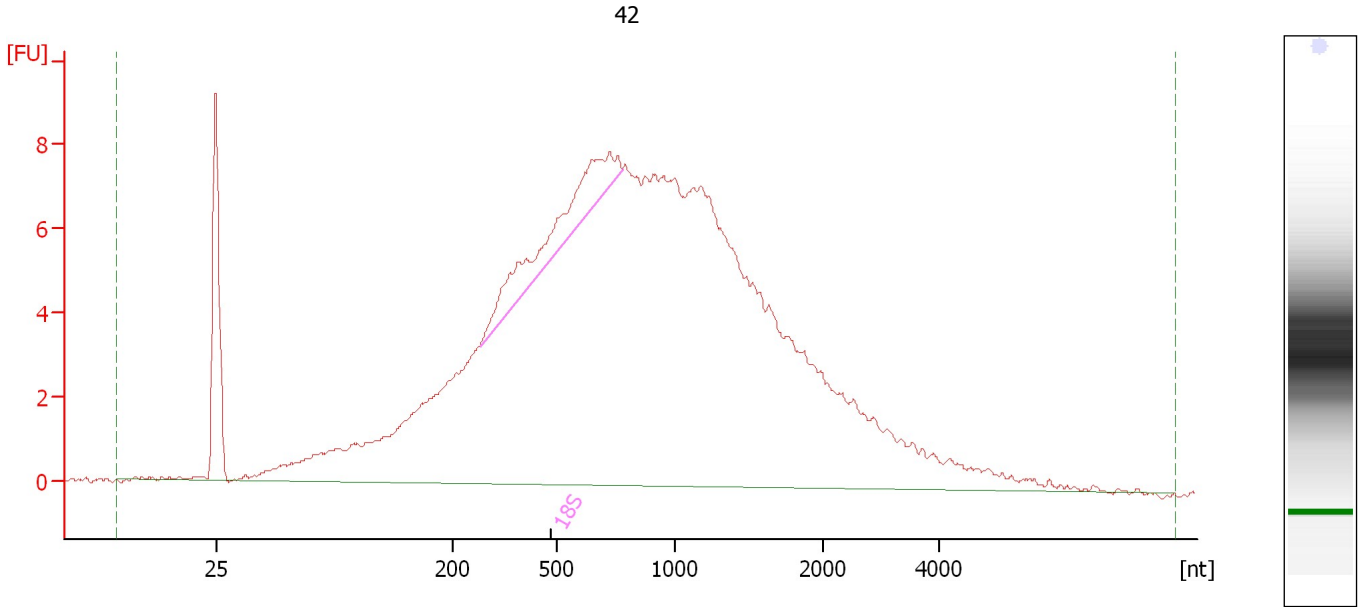
Fragment table for sample 3 : 41

Name	Start Size [nt]	End Size [nt]	Area	% of total Area
18S	226	1,276	27.6	16.0

Assay Class: Eukaryote Total RNA Nano
Data Path: C:\...ents and Settings\Bioanalyzer\2012-07-06\2012-07-06_003.xad

Created: 7/6/2012 4:04:39 PM
Modified: 7/6/2012 4:25:46 PM

Electropherogram Summary Continued ...



Overall Results for sample 4 : 42

RNA Area:	274.2	RNA Integrity Number (RIN):	2.9 (B.02.08)
RNA Concentration:	521 ng/μl	Result Flagging Color:	
rRNA Ratio [28s / 18s]:	0.0	Result Flagging Label:	RIN: 2.90

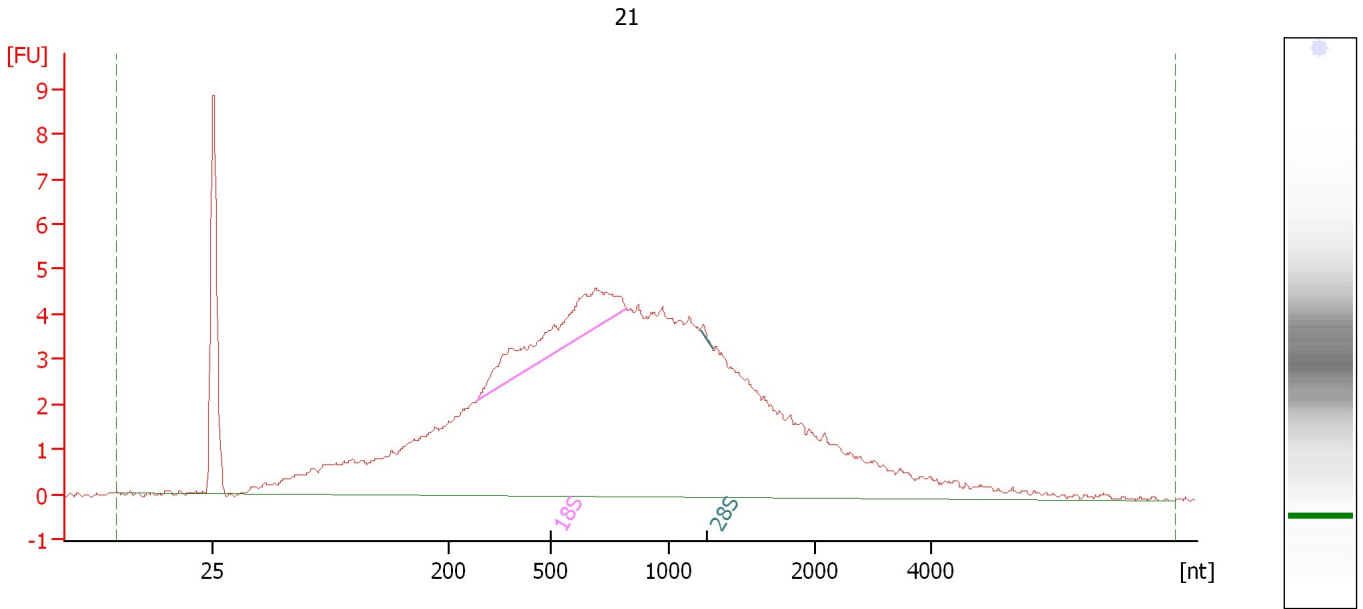
Fragment table for sample 4 : 42

Name	Start Size [nt]	End Size [nt]	Area	% of total Area
18S	278	779	11.1	4.1

Assay Class: Eukaryote Total RNA Nano
Data Path: C:\...ents and Settings\Bioanalyzer\2012-07-06\2012-07-06_003.xad

Created: 7/6/2012 4:04:39 PM
Modified: 7/6/2012 4:25:46 PM

Electropherogram Summary Continued ...



Overall Results for sample 5 : 21

RNA Area:	160.2	RNA Integrity Number (RIN):	3.1 (B.02.08)
RNA Concentration:	305 ng/μl	Result Flagging Color:	
rRNA Ratio [28s / 18s]:	0.0	Result Flagging Label:	RIN: 3.10

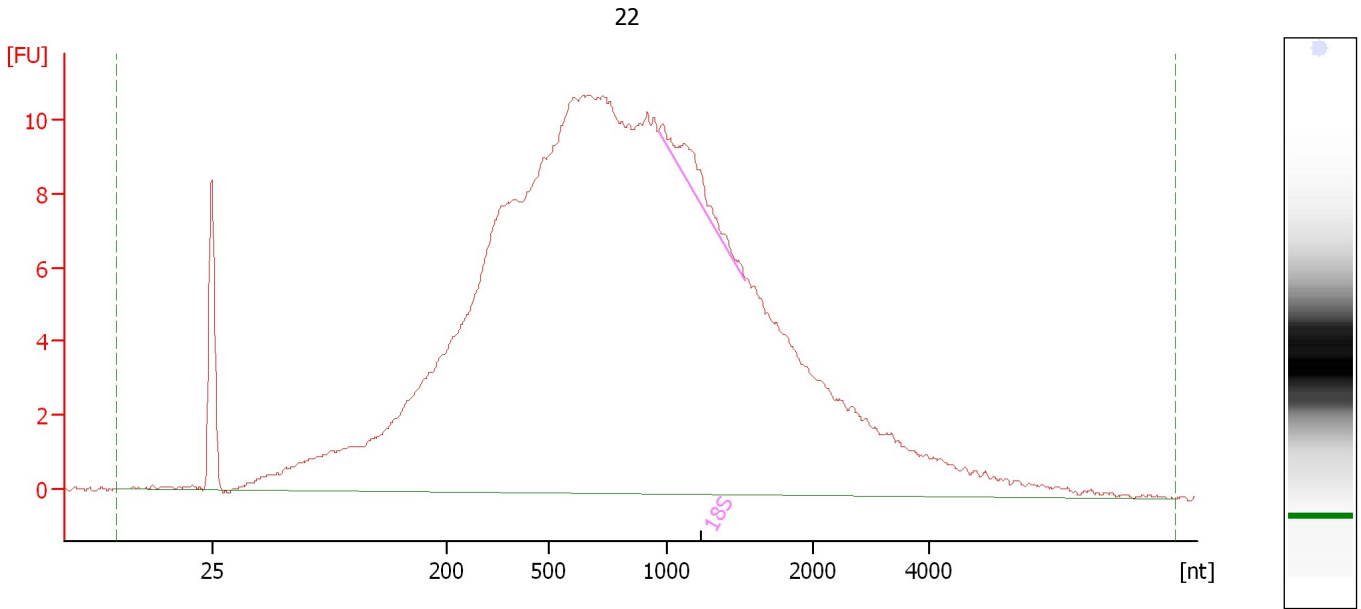
Fragment table for sample 5 : 21

Name	Start Size [nt]	End Size [nt]	Area	% of total Area
18S	282	821	9.6	6.0
28S	1,217	1,296	0.1	0.1

Assay Class: Eukaryote Total RNA Nano
Data Path: C:\...ents and Settings\Bioanalyzer\2012-07-06\2012-07-06_003.xad

Created: 7/6/2012 4:04:39 PM
Modified: 7/6/2012 4:25:46 PM

Electropherogram Summary Continued ...



Overall Results for sample 6 : 22

RNA Area:	379.9	RNA Integrity Number (RIN):	2.4 (B.02.08)
RNA Concentration:	722 ng/μl	Result Flagging Color:	
rRNA Ratio [28s / 18s]:	0.0	Result Flagging Label:	RIN: 2.40

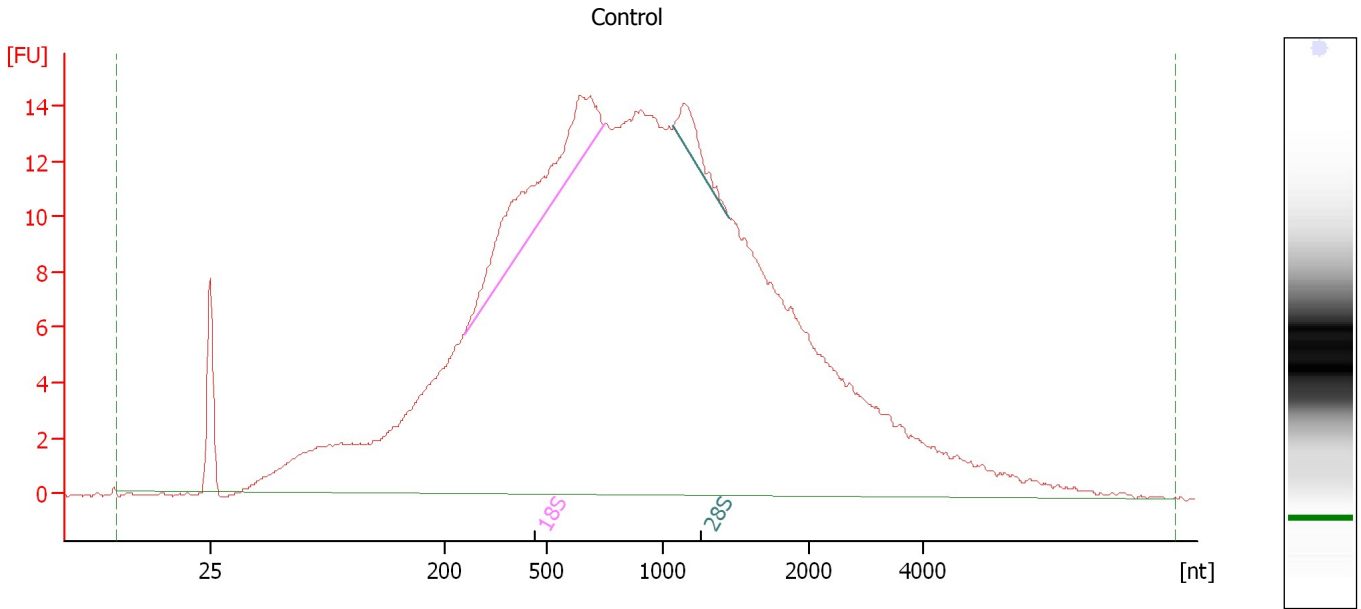
Fragment table for sample 6 : 22

Name	Start Size [nt]	End Size [nt]	Area	% of total Area
18S	967	1,536	3.8	1.0

Assay Class: Eukaryote Total RNA Nano
Data Path: C:\...ents and Settings\Bioanalyzer\2012-07-06\2012-07-06_003.xad

Created: 7/6/2012 4:04:39 PM
Modified: 7/6/2012 4:25:46 PM

Electropherogram Summary Continued ...



Overall Results for sample 7 : Control

RNA Area: 525.3 RNA Integrity Number (RIN): 3.1 (B.02.08)
RNA Concentration: 999 ng/μl Result Flagging Color:
rRNA Ratio [28s / 18s]: 0.2 Result Flagging Label: RIN: 3.10

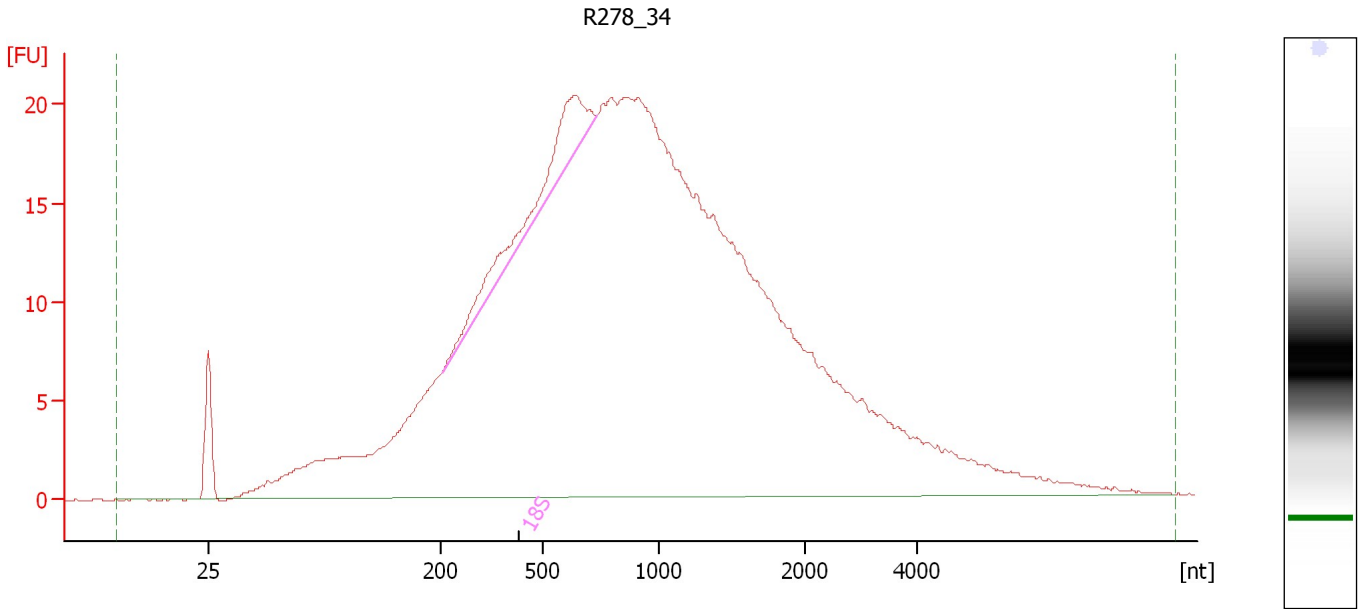
Fragment table for sample 7 : Control

Name	Start Size [nt]	End Size [nt]	Area	% of total Area
18S	259	755	24.0	4.6
28S	1,077	1,449	3.8	0.7

Assay Class: Eukaryote Total RNA Nano
Data Path: C:\...ents and Settings\Bioanalyzer\2012-07-06\2012-07-06_003.xad

Created: 7/6/2012 4:04:39 PM
Modified: 7/6/2012 4:25:46 PM

Electropherogram Summary Continued ...



Overall Results for sample 8 : R278_34

RNA Area:	713.3	RNA Integrity Number (RIN):	2.9 (B.02.08)
RNA Concentration:	1,356 ng/μl	Result Flagging Color:	
rRNA Ratio [28s / 18s]:	0.0	Result Flagging Label:	RIN: 2.90

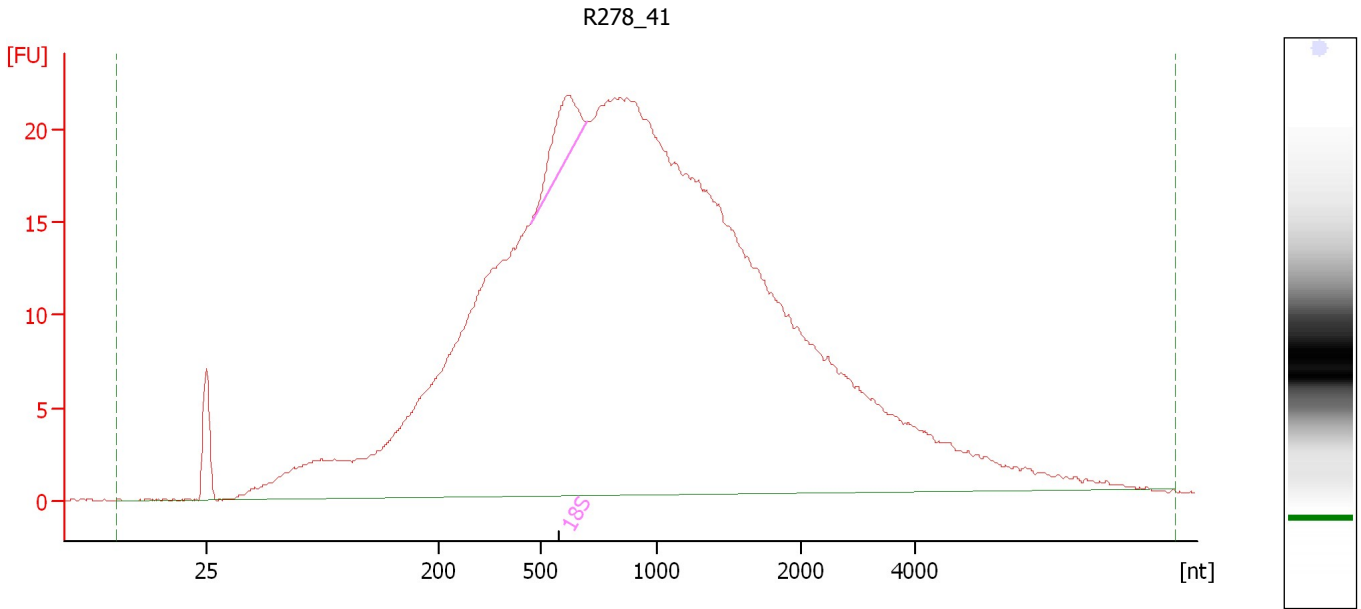
Fragment table for sample 8 : R278_34

Name	Start Size [nt]	End Size [nt]	Area	% of total Area
18S	202	734	19.8	2.8

Assay Class: Eukaryote Total RNA Nano
Data Path: C:\...ents and Settings\Bioanalyzer\2012-07-06\2012-07-06_003.xad

Created: 7/6/2012 4:04:39 PM
Modified: 7/6/2012 4:25:46 PM

Electropherogram Summary Continued ...



Overall Results for sample 9 : R278 41

RNA Area:	766.1	RNA Integrity Number (RIN):	2.7 (B.02.08)
RNA Concentration:	1,457 ng/μl	Result Flagging Color:	
rRNA Ratio [28s / 18s]:	0.0	Result Flagging Label:	RIN: 2.70

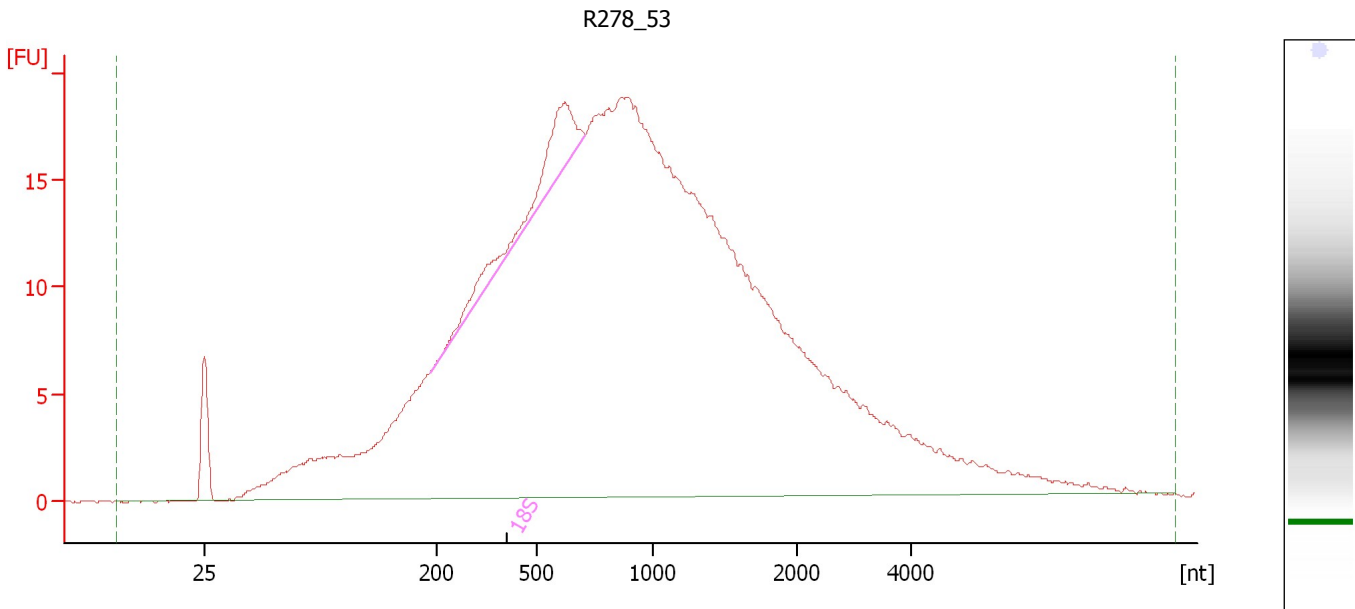
Fragment table for sample 9 : R278 41

Name	Start Size [nt]	End Size [nt]	Area	% of total Area
18S	470	701	11.7	1.5

Assay Class: Eukaryote Total RNA Nano
 Data Path: C:\...ents and Settings\Bioanalyzer\2012-07-06\2012-07-06_003.xad

Created: 7/6/2012 4:04:39 PM
 Modified: 7/6/2012 4:25:46 PM

Electropherogram Summary Continued ...



Overall Results for sample 10 : R278_53

RNA Area:	659.6	RNA Integrity Number (RIN):	2.8 (B.02.08)
RNA Concentration:	1,254 ng/μl	Result Flagging Color:	
rRNA Ratio [28s / 18s]:	0.0	Result Flagging Label:	RIN: 2.80

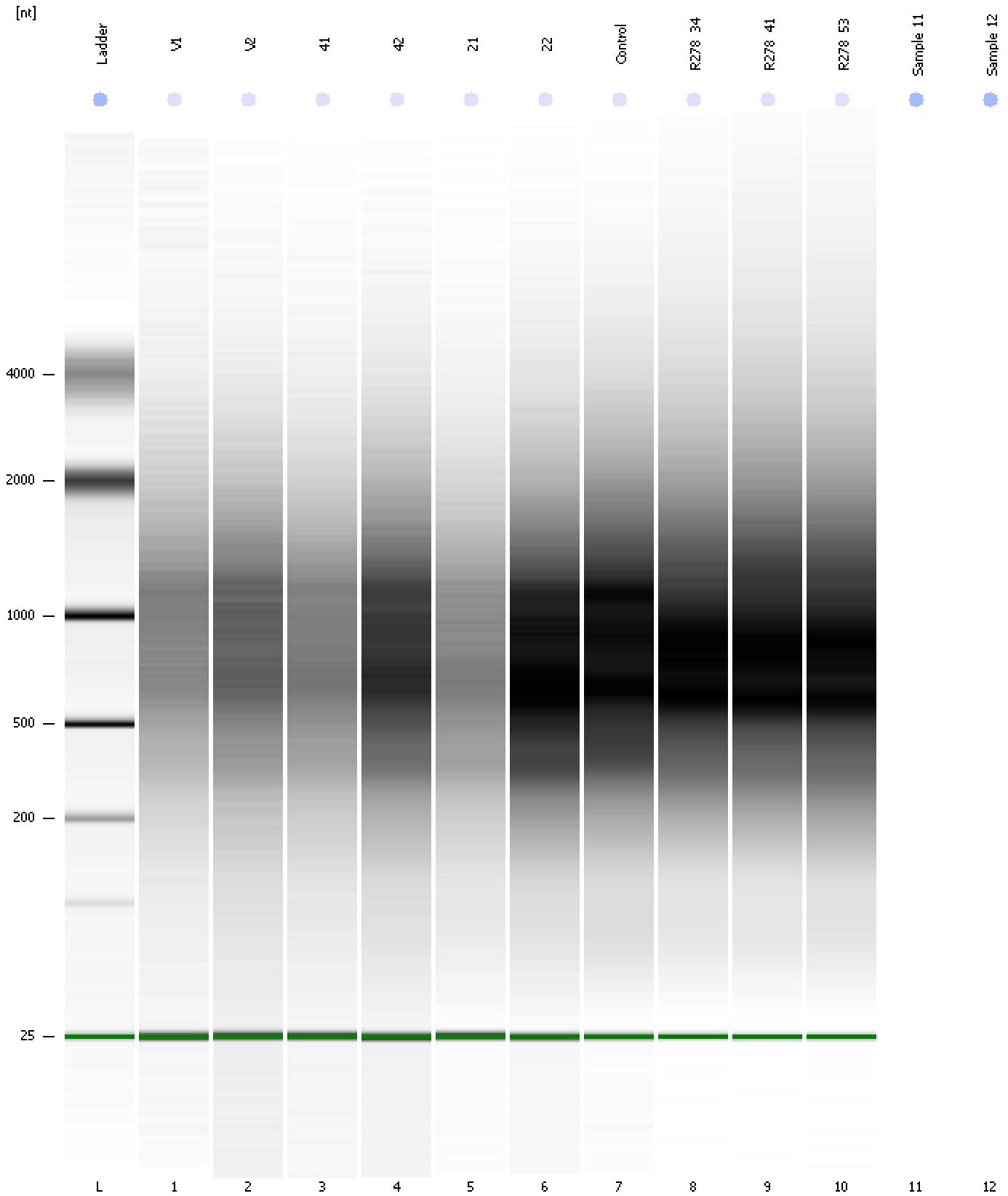
Fragment table for sample 10 : R278_53

Name	Start Size [nt]	End Size [nt]	Area	% of total Area
18S	195	708	16.4	2.5

Assay Class: Eukaryote Total RNA Nano
Data Path: C:\...ents and Settings\Bioanalyzer\2012-07-06\2012-07-06_003.xad

Created: 7/6/2012 4:04:39 PM
Modified: 7/6/2012 4:25:46 PM

Gel Image



Assay Class: Eukaryote Total RNA Nano
Data Path: C:\...ents and Settings\Bioanalyzer\2012-07-06\2012-07-06_003.xad

Created: 7/6/2012 4:04:39 PM
Modified: 7/6/2012 4:25:46 PM

Invalid Samples

Sample 11 has not been run, no results available.

Sample 12 has not been run, no results available.

Assay Class: Eukaryote Total RNA Nano Created: 7/6/2012 4:04:39 PM
 Data Path: C:\...ents and Settings\Bioanalyzer\2012-07-06\2012-07-06_003.xad Modified: 7/6/2012 4:25:46 PM

Run Logbook

Description	Number	Source	Category	Sub Category	Time	Time Zone	User	Host
Run ended on port 1 (Number of wells acquired: 11)		Instrument	Run		7/6/2012 4:25:43 PM	(GMT --07:00) Pacific Standard Time	UC Davis	D8XSMGH1
Run started on port 1 (File: C:\Documents and Settings\Bioanalyzer\2012-07-06\2012-07-06_003.xad)		Instrument	Run		7/6/2012 4:04:44 PM	(GMT --07:00) Pacific Standard Time	UC Davis	D8XSMGH1
Product Number : G2938B		Instrument	Run		7/6/2012 4:04:44 PM	(GMT --07:00) Pacific Standard Time	UC Davis	D8XSMGH1
Name :		Instrument	Run		7/6/2012 4:04:44 PM	(GMT --07:00) Pacific Standard Time	UC Davis	D8XSMGH1
Vendor : Agilent Technologies		Instrument	Run		7/6/2012 4:04:44 PM	(GMT --07:00) Pacific Standard Time	UC Davis	D8XSMGH1
Serial# : DE13701086		Instrument	Run		7/6/2012 4:04:44 PM	(GMT --07:00) Pacific Standard Time	UC Davis	D8XSMGH1
Firmware : C.01.069		Instrument	Run		7/6/2012 4:04:44 PM	(GMT --07:00) Pacific Standard Time	UC Davis	D8XSMGH1
Cartridge : Electrode		Instrument	Run		7/6/2012 4:04:44 PM	(GMT --07:00) Pacific Standard Time	UC Davis	D8XSMGH1