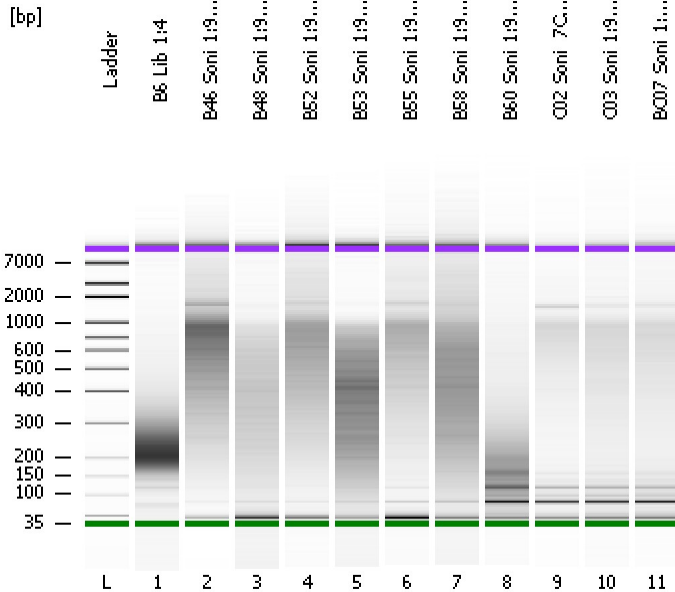


Assay Class: High Sensitivity DNA Assay
Data Path: C:\...ents and Settings\Bioanalyzer\2012-07-09\2012-07-09_001.xad

Created: 7/9/2012 10:06:57 AM
Modified: 7/9/2012 10:50:43 AM

Electrophoresis File Run Summary



Instrument Information:

Instrument Name: DE13701086 Firmware: C.01.069
Serial#: DE13701086 Type: G2938B

Assay Information:

Assay Origin Path: C:\Program Files\Agilent\2100 bioanalyzer\2100 expert\assays\dsDNA\High Sensitivity DNA.xsy
Assay Class: High Sensitivity DNA Assay
Version: 1.03
Assay Comments: Copyright © 2003-2010 Agilent Technologies

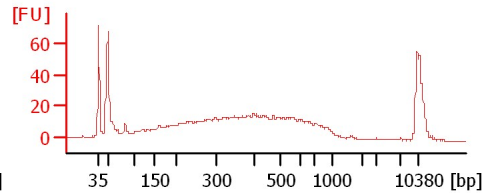
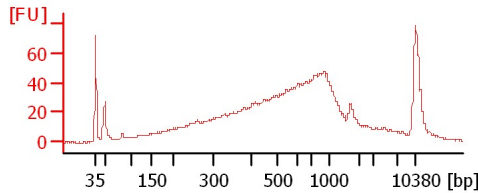
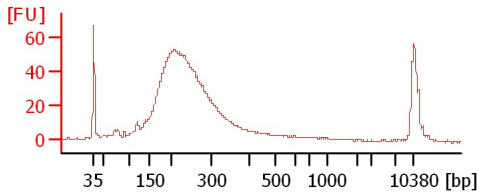
Chip Information:

Chip Lot #:
Reagent Kit Lot #:
Chip Comments:

B6 Lib 1:4

B46 Soni 1:9 7Cycl.

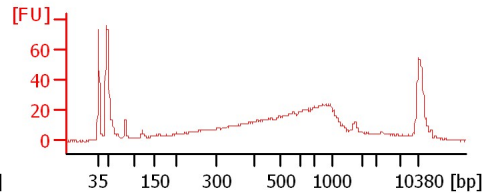
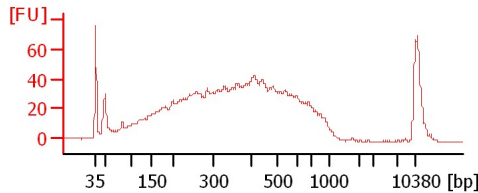
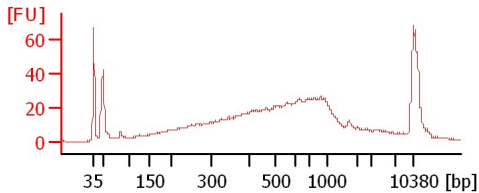
B48 Soni 1:9 7Cycl.



B52 Soni 1:9 7Cycl.

B53 Soni 1:9 7Cycl.

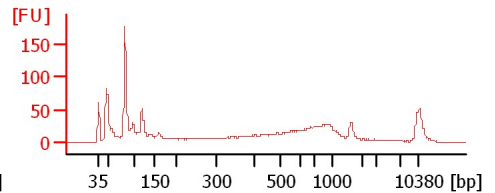
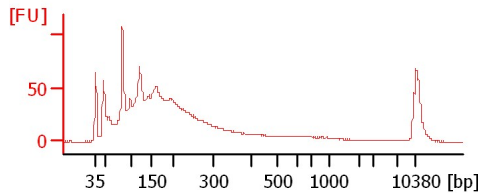
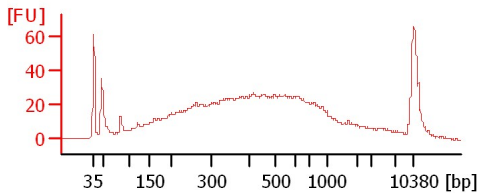
B55 Soni 1:9 7Cycl.



B58 Soni 1:9 7Cycl.

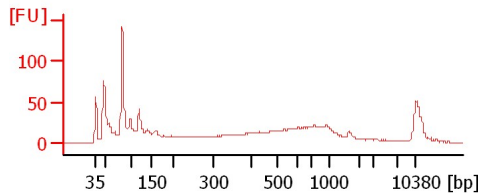
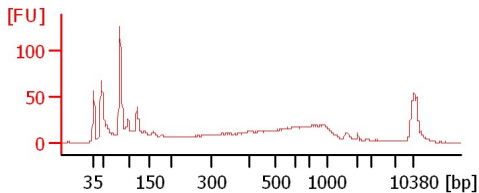
B60 Soni 1:9 7Cycl.

C02 Soni 7Cycl.



C03 Soni 1:9 7Cycl.

BC07 Soni 1:9 7Cycl.



Assay Class: High Sensitivity DNA Assay
Data Path: C:\...ents and Settings\Bioanalyzer\2012-07-09\2012-07-09_001.xad

Created: 7/9/2012 10:06:57 AM
Modified: 7/9/2012 10:50:43 AM

Electrophoresis File Run Summary (Chip Summary)

Sample Name	Sample Comment	Rest. Digest	Status	Observation	Result Label	Result Color
B6 Lib 1:4		<input type="checkbox"/>	✓			
B46 Soni 1:9 7Cycl.		<input type="checkbox"/>	✓			
B48 Soni 1:9 7Cycl.		<input type="checkbox"/>	✓			
B52 Soni 1:9 7Cycl.		<input type="checkbox"/>	✓			
B53 Soni 1:9 7Cycl.		<input type="checkbox"/>	✓			
B55 Soni 1:9 7Cycl.		<input type="checkbox"/>	✓			
B58 Soni 1:9 7Cycl.		<input type="checkbox"/>	✓			
B60 Soni 1:9 7Cycl.		<input type="checkbox"/>	✓			
C02 Soni 7Cycl.		<input type="checkbox"/>	✓			
C03 Soni 1:9 7Cycl.		<input type="checkbox"/>	✓			
BC07 Soni 1:9 7Cycl.		<input type="checkbox"/>	✓			
Ladder		<input type="checkbox"/>	✓			

Chip Lot #

Reagent Kit Lot #

Chip Comments :

Assay Class: High Sensitivity DNA Assay
Data Path: C:\...ents and Settings\Bioanalyzer\2012-07-09\2012-07-09_001.xad

Created: 7/9/2012 10:06:57 AM
Modified: 7/9/2012 10:50:43 AM

Electrophoresis Assay Details

General Analysis Settings

Number of Available Sample and Ladder Wells (Max.) : 12
Minimum Visible Range [s] : 32
Maximum Visible Range [s] : 138
Start Analysis Time Range [s] : 33
End Analysis Time Range [s] : 137.5
Ladder Concentration [pg/μl] : 1950
Uses Standard Area for Ladder Fragments
Lower Marker Concentration [pg/μl] : 125
Upper Marker Concentration [pg/μl] : 75
Used Upper Marker for Quantitation
Standard Curve Fit is Point to Point
Show Data Aligned to Lower and Upper Marker

Integrator Settings

Integration Start Time [s] : 33.05
Integration End Time [s] : 137
Slope Threshold : 0.8
Height Threshold [FU] : 5
Area Threshold : 0.1
Width Threshold [s] : 0.6
Baseline Plateau [s] : 0.5

Filter Settings

Filter Width [s] : 0.5
Polynomial Order : 4

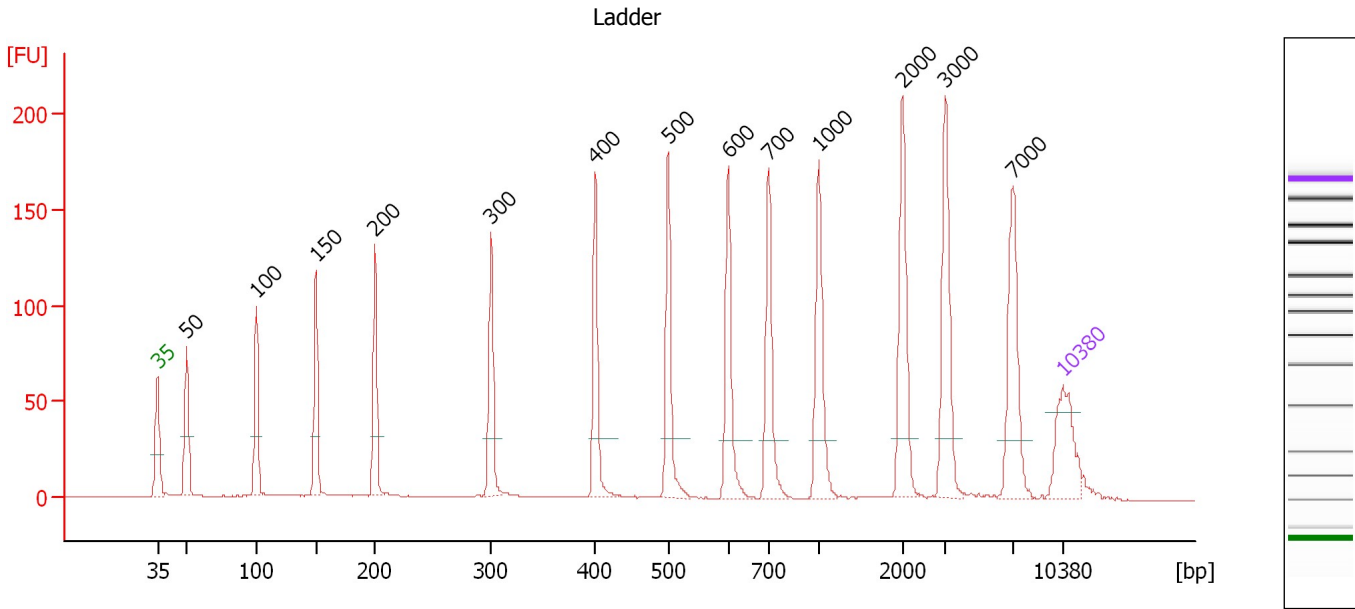
Ladder

Ladder Peak	Size	Area
1	35	160
2	50	210
3	100	208
4	150	221
5	200	242
6	300	270
7	400	305
8	500	306
9	600	336
10	700	321
11	1000	366
12	2000	413
13	3000	411
14	7000	400
15	10380	214

Assay Class: High Sensitivity DNA Assay
 Data Path: C:\...ents and Settings\Bioanalyzer\2012-07-09\2012-07-09_001.xad

Created: 7/9/2012 10:06:57 AM
 Modified: 7/9/2012 10:50:43 AM

Electropherogram Summary



Overall Results for Ladder

Noise: 0.1

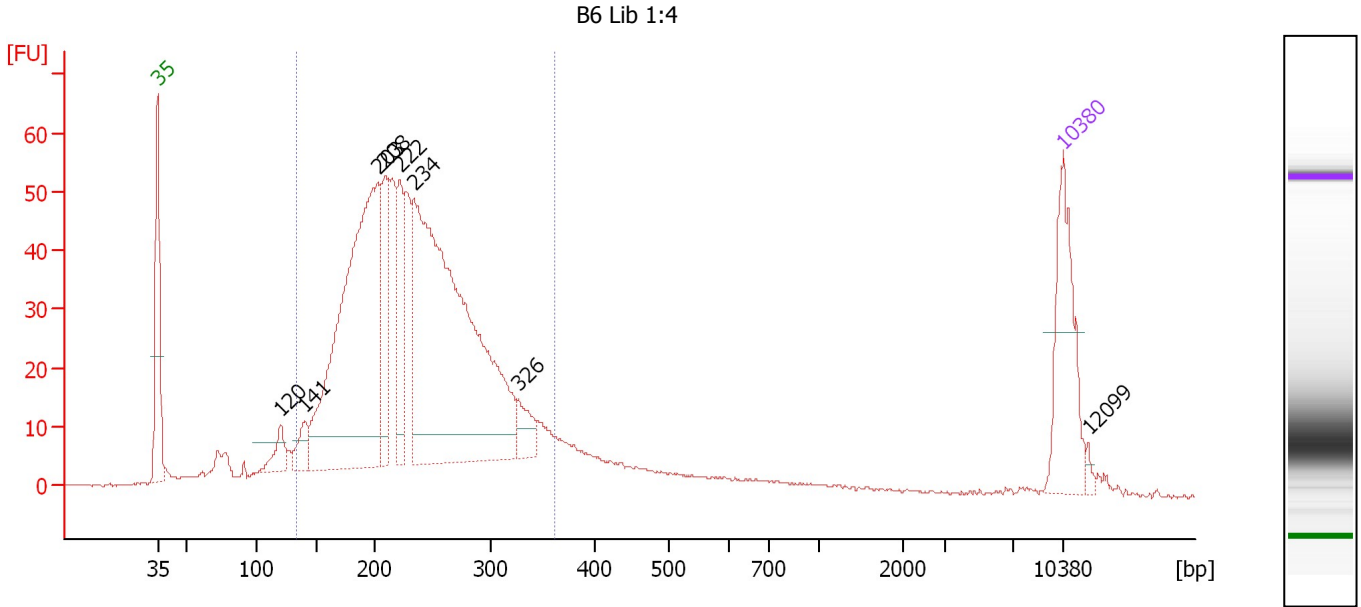
Peak table for Ladder

Peak	Size [bp]	Conc. [pg/μl]	Molarity [pmol/l]	Observations
1	35	125.00	5,411.3	Lower Marker
2	50	150.00	4,545.5	Ladder Peak
3	100	150.00	2,272.7	Ladder Peak
4	150	150.00	1,515.2	Ladder Peak
5	200	150.00	1,136.4	Ladder Peak
6	300	150.00	757.6	Ladder Peak
7	400	150.00	568.2	Ladder Peak
8	500	150.00	454.5	Ladder Peak
9	600	150.00	378.8	Ladder Peak
10	700	150.00	324.7	Ladder Peak
11	1,000	150.00	227.3	Ladder Peak
12	2,000	150.00	113.6	Ladder Peak
13	3,000	150.00	75.8	Ladder Peak
14	7,000	150.00	32.5	Ladder Peak
15	10,380	75.00	10.9	Upper Marker

Assay Class: High Sensitivity DNA Assay
 Data Path: C:\...ents and Settings\Bioanalyzer\2012-07-09\2012-07-09_001.xad

Created: 7/9/2012 10:06:57 AM
 Modified: 7/9/2012 10:50:43 AM

Electropherogram Summary Continued ...



Overall Results for sample 1 : B6 Lib 1:4

Number of peaks found: 8 Corr. Area 1: 1,036.6
 Noise: 0.2

Peak table for sample 1 : B6 Lib 1:4

Peak	Size [bp]	Conc. [pg/μl]	Molarity [pmol/l]	Observations
1	35	125.00	5,411.3	Lower Marker
2	120	28.75	361.8	
3	141	28.29	304.5	
4	203	473.39	3,541.9	
5	208	90.16	655.7	
6	222	73.17	499.5	
7	234	572.76	3,715.0	
8	326	25.37	117.9	
9	10,380	75.00	10.9	Upper Marker
10	12,099	0.00	0.0	

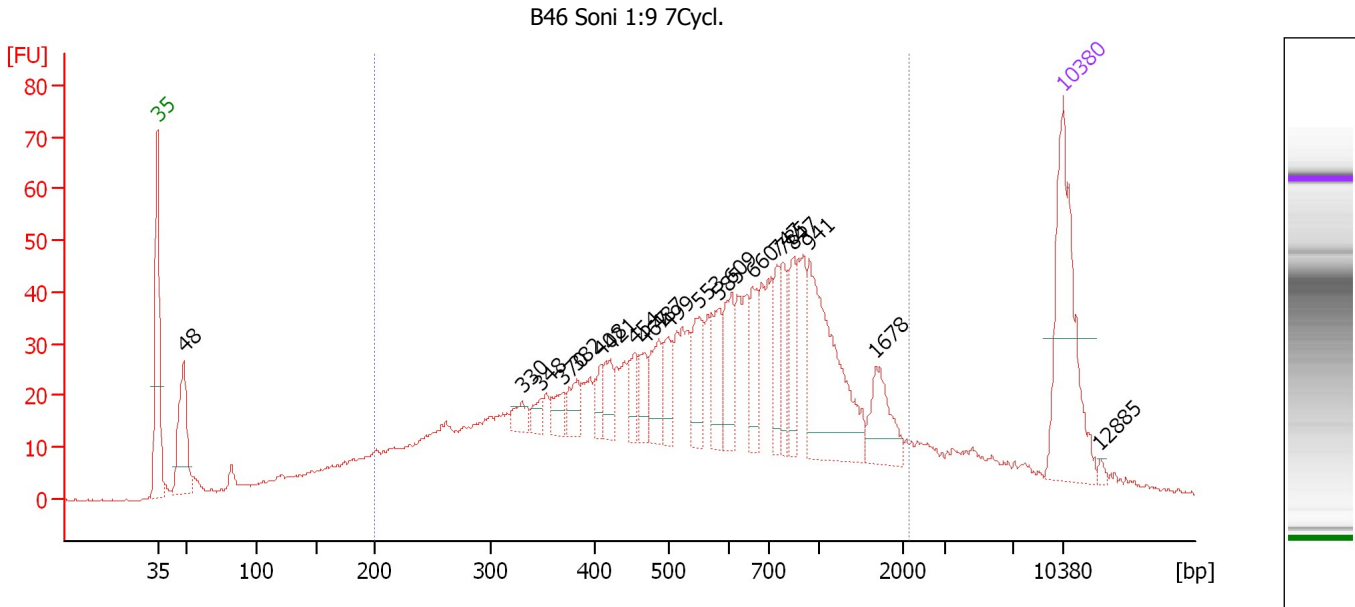
Region table for sample 1 : B6 Lib 1:4

From [bp]	To [bp]	Average Size [bp]	Molarity [pmol/l]	Conc. [pg/μl]	Corr. Area	% of Total	Size distribution in CV [%]	Color
134	360	235	11,175.4	1,627.76	1,036.6	84	21.4	Blue

Assay Class: High Sensitivity DNA Assay
 Data Path: C:\...ents and Settings\Bioanalyzer\2012-07-09\2012-07-09_001.xad

Created: 7/9/2012 10:06:57 AM
 Modified: 7/9/2012 10:50:43 AM

Electropherogram Summary Continued ...



Overall Results for sample 2 : B46 Soni 1:9 7Cycl.

Number of peaks found: 21 Corr. Area 1: 1,281.3
 Noise: 0.2

Peak table for sample 2 : B46 Soni 1:9 7Cycl.

Peak	Size [bp]	Conc. [pg/μl]	Molarity [pmol/l]	Observations
1	35	125.00	5,411.3	Lower Marker
2	48	66.73	2,090.0	
3	330	11.05	50.8	
4	348	7.62	33.2	
5	370	12.05	49.4	
6	382	15.11	59.9	
7	408	10.61	39.4	
8	421	16.23	58.4	
9	454	15.77	52.6	
10	467	15.31	49.7	
11	487	25.79	80.2	
12	499	18.86	57.2	
13	553	27.11	74.3	
14	585	22.98	59.6	
15	609	29.73	74.0	
16	660	22.18	50.9	
17	747	22.97	46.6	
18	785	21.41	41.3	
19	847	22.72	40.6	
20	941	89.75	144.5	
21	1,678	27.04	24.4	
22	10,380	75.00	10.9	Upper Marker
23	12,885	0.00	0.0	

Assay Class: High Sensitivity DNA Assay
Data Path: C:\...ents and Settings\Bioanalyzer\2012-07-09\2012-07-09_001.xad

Created: 7/9/2012 10:06:57 AM
Modified: 7/9/2012 10:50:43 AM

Electropherogram Summary Continued ...

... Region table for sample 2 : B46 Soni 1:9 7Cycl.

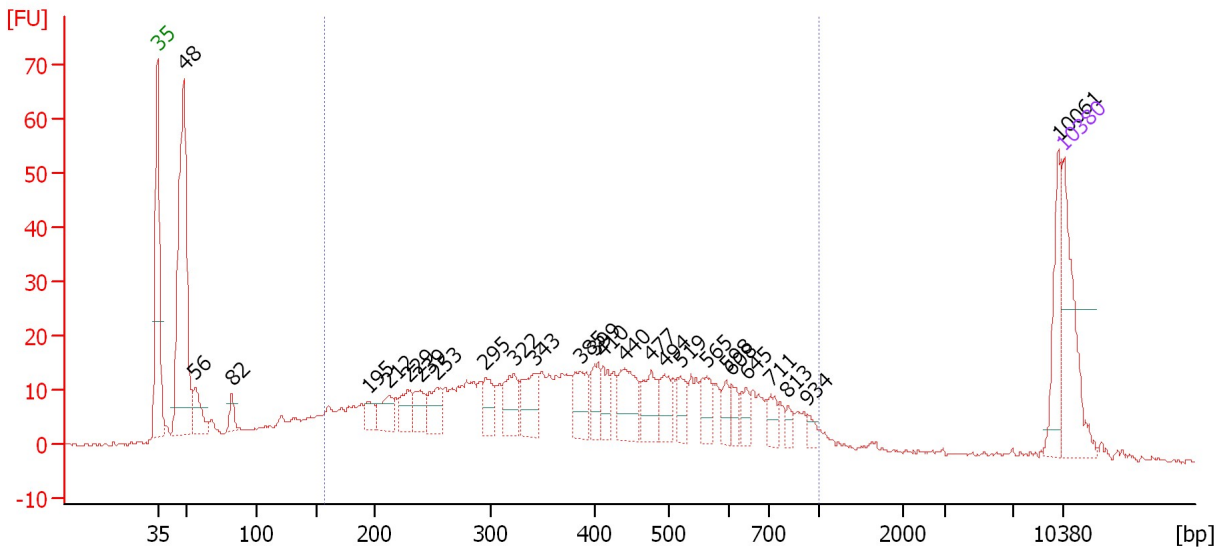
From [bp]	To [bp]	Average Size [bp]	Molarity [pmol/l]	Conc. [pg/μl]	Corr. Area	% of Total	Size distribution in CV [%]	Color
200	2,165	669	4,023.2	1,212.27	1,281.3	83	58.6	■

Assay Class: High Sensitivity DNA Assay
 Data Path: C:\...ents and Settings\Bioanalyzer\2012-07-09\2012-07-09_001.xad

Created: 7/9/2012 10:06:57 AM
 Modified: 7/9/2012 10:50:43 AM

Electropherogram Summary Continued ...

B48 Soni 1:9 7Cycl.



Overall Results for sample 3 : B48 Soni 1:9 7Cycl.

Number of peaks found: 26 Corr. Area 1: 628.4
 Noise: 0.3

Peak table for sample 3 : B48 Soni 1:9 7Cycl.

Peak	Size [bp]	Conc. [pg/μl]	Molarity [pmol/l]	Observations
1	35	125.00	5,411.3	Lower Marker
2	48	342.00	10,722.0	
3	56	39.73	1,072.4	
4	82	17.46	321.2	
5	195	18.48	143.8	
6	212	34.42	246.1	
7	229	29.89	198.0	
8	239	27.89	176.6	
9	253	33.49	200.5	
10	295	32.36	166.1	
11	322	42.97	202.0	
12	343	45.67	202.0	
13	385	41.04	161.3	
14	399	29.07	110.4	
15	410	25.97	96.0	
16	440	55.09	189.8	
17	477	41.18	130.8	
18	494	29.56	90.7	
19	519	24.38	71.1	
20	565	27.69	74.3	
21	598	15.99	40.5	
22	608	16.17	40.3	
23	645	15.48	36.3	
24	711	16.93	36.1	
25	813	8.87	16.5	
26	934	8.20	13.3	


Assay Class: High Sensitivity DNA Assay
Data Path: C:\...ents and Settings\Bioanalyzer\2012-07-09\2012-07-09_001.xad

Created: 7/9/2012 10:06:57 AM
Modified: 7/9/2012 10:50:43 AM

Electropherogram Summary Continued ...**... Peak table for sample 3 : B48 Soni 1:9 7Cycl.**

Peak	Size [bp]	Conc. [pg/μl]	Molarity [pmol/l]	Observations
27	10,061	51.07	7.7	
28	10,380	75.00	10.9	Upper Marker

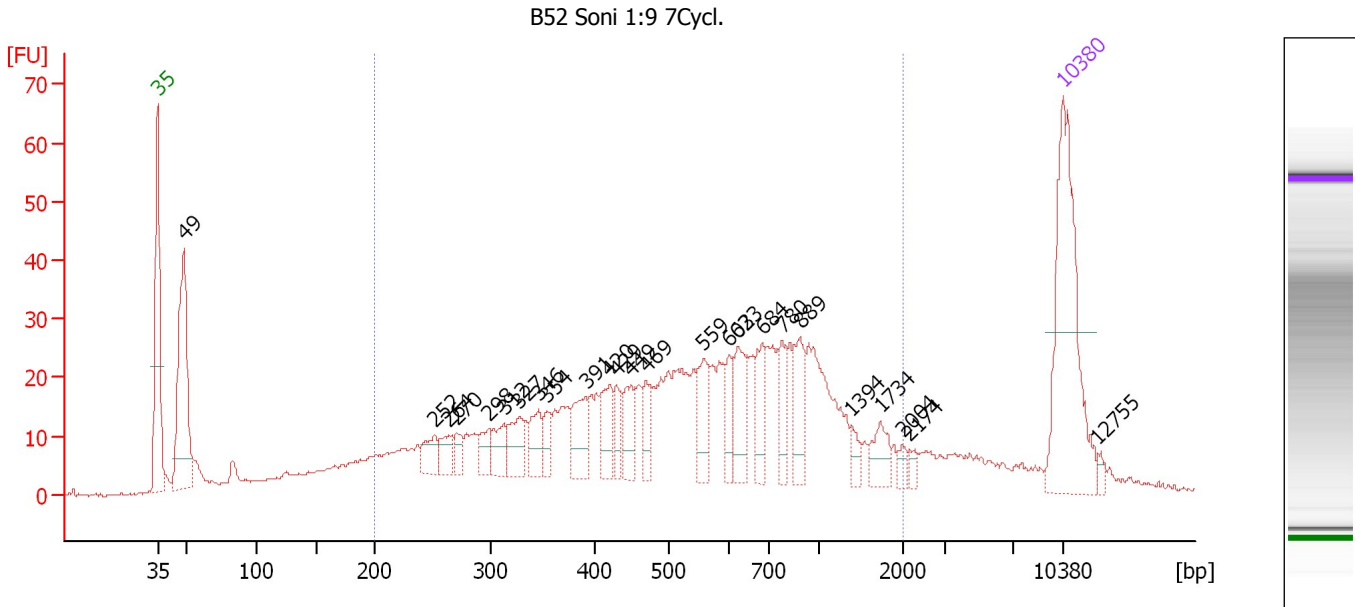
Region table for sample 3 : B48 Soni 1:9 7Cycl.

From [bp]	To [bp]	Average Size [bp]	Molarity [pmol/l]	Conc. [pg/μl]	Corr. Area	% of Total	Size distribution in CV [%]	Color
157	1,000	422	6,122.7	1,313.87	628.4	68	41.8	

Assay Class: High Sensitivity DNA Assay
 Data Path: C:\...ents and Settings\Bioanalyzer\2012-07-09\2012-07-09_001.xad

Created: 7/9/2012 10:06:57 AM
 Modified: 7/9/2012 10:50:43 AM

Electropherogram Summary Continued ...



Overall Results for sample 4 : B52 Soni 1:9 7Cycl.

Number of peaks found: 25 Corr. Area 1: 838.2
 Noise: 0.2

Peak table for sample 4 : B52 Soni 1:9 7Cycl.

Peak	Size [bp]	Conc. [pg/μl]	Molarity [pmol/l]	Observations
1	35	125.00	5,411.3	Lower Marker
2	49	106.14	3,303.1	
3	252	13.87	83.5	
4	264	11.46	65.8	
5	270	8.12	45.5	
6	298	10.66	54.2	
7	312	14.25	69.2	
8	327	17.74	82.1	
9	346	16.09	70.5	
10	354	9.34	40.0	
11	391	21.48	83.2	
12	420	18.83	68.0	
13	429	11.61	41.0	
14	449	16.95	57.2	
15	469	12.83	41.4	
16	559	21.14	57.3	
17	603	12.99	32.7	
18	623	24.23	58.9	
19	684	18.53	41.1	
20	780	15.03	29.2	
21	889	19.45	33.1	
22	1,394	5.89	6.4	
23	1,734	11.68	10.2	
24	2,004	3.59	2.7	
25	2,174	2.92	2.0	
26	10,380	75.00	10.9	Upper Marker


Assay Class: High Sensitivity DNA Assay
Data Path: C:\...ents and Settings\Bioanalyzer\2012-07-09\2012-07-09_001.xad

Created: 7/9/2012 10:06:57 AM
Modified: 7/9/2012 10:50:43 AM

Electropherogram Summary Continued ...**... Peak table for sample 4 : B52 Soni 1:9 7Cycl.**

Peak	Size [bp]	Conc. [pg/ μ l]	Molarity [pmol/l]	Observations
27	12,755	0.00	0.0	

Region table for sample 4 : B52 Soni 1:9 7Cycl.

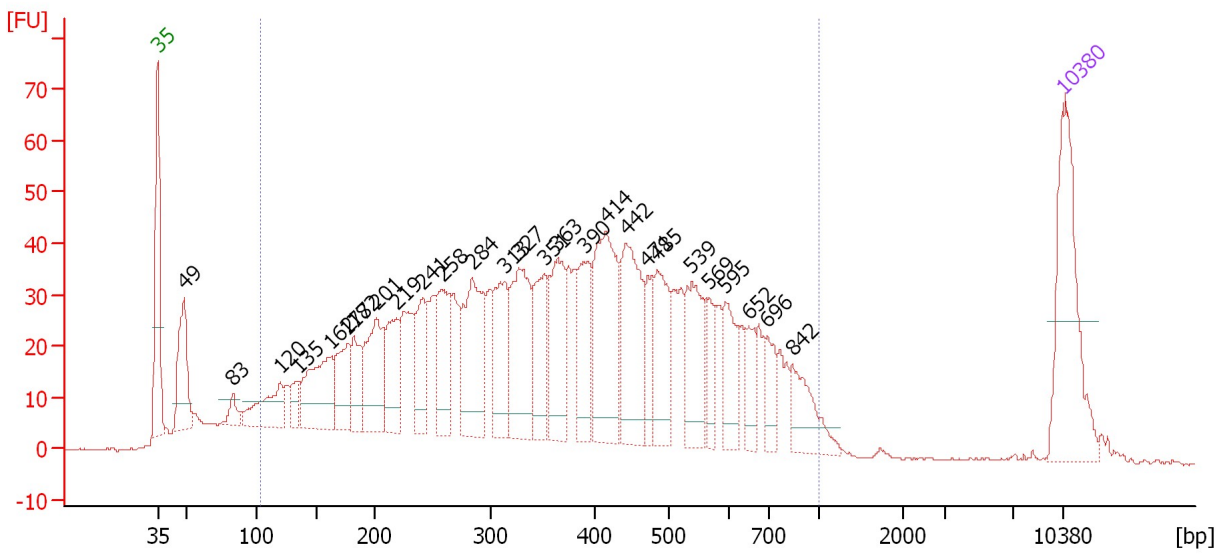
From [bp]	To [bp]	Average Size [bp]	Molarity [pmol/l]	Conc. [pg/ μ l]	Corr. Area	% of Total	Size distribution in CV [%]	Color
200	2,033	628	2,714.3	779.41	838.2	75	58.5	

Assay Class: High Sensitivity DNA Assay
 Data Path: C:\...ents and Settings\Bioanalyzer\2012-07-09\2012-07-09_001.xad

Created: 7/9/2012 10:06:57 AM
 Modified: 7/9/2012 10:50:43 AM

Electropherogram Summary Continued ...

B53 Soni 1:9 7Cycl.



Overall Results for sample 5 : B53 Soni 1:9 7Cycl.

Number of peaks found: 27 Corr. Area 1: 1,712.1
 Noise: 0.2

Peak table for sample 5 : B53 Soni 1:9 7Cycl.

Peak	Size [bp]	Conc. [pg/μl]	Molarity [pmol/l]	Observations
1	35	125.00	5,411.3	Lower Marker
2	49	64.42	2,006.4	
3	83	12.12	220.9	
4	120	44.70	563.1	
5	135	14.98	168.3	
6	162	72.29	674.4	
7	177	42.78	367.1	
8	182	31.81	264.3	
9	201	68.49	515.8	
10	219	46.17	319.8	
11	241	42.00	264.0	
12	258	51.49	302.9	
13	284	85.86	458.7	
14	313	56.57	274.3	
15	327	84.48	391.8	
16	351	50.13	216.4	
17	363	61.78	257.6	
18	390	48.83	189.7	
19	414	99.47	363.6	
20	442	81.56	279.3	
21	471	23.91	76.9	
22	485	56.33	176.1	
23	539	51.08	143.5	
24	569	19.98	53.2	
25	595	33.17	84.4	
26	652	19.33	44.9	

Assay Class: High Sensitivity DNA Assay
 Data Path: C:\...ents and Settings\Bioanalyzer\2012-07-09\2012-07-09_001.xad


Created: 7/9/2012 10:06:57 AM
 Modified: 7/9/2012 10:50:43 AM

Electropherogram Summary Continued ...

... Peak table for sample 5 : B53 Soni 1:9 7Cycl.

Peak	Size [bp]	Conc. [pg/μl]	Molarity [pmol/l]	Observations
27	696	20.22	44.0	
28	842	33.71	60.7	
29	10,380	75.00	10.9	Upper Marker

Region table for sample 5 : B53 Soni 1:9 7Cycl.

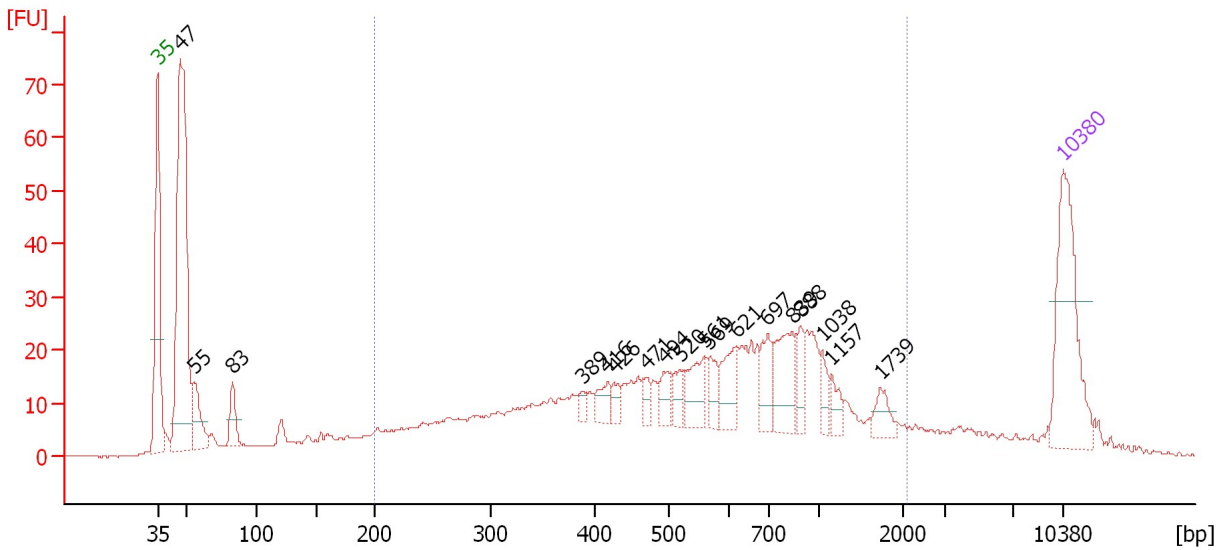
From [bp]	To [bp]	Average Size [bp]	Molarity [pmol/l]	Conc. [pg/μl]	Corr. Area	% of Total	Size distribution in CV [%]	Color
104	1,000	393	9,547.9	1,764.37	1,712.1	91	44.7	

Assay Class: High Sensitivity DNA Assay
 Data Path: C:\...ents and Settings\Bioanalyzer\2012-07-09\2012-07-09_001.xad

Created: 7/9/2012 10:06:57 AM
 Modified: 7/9/2012 10:50:43 AM

Electropherogram Summary Continued ...

B55 Soni 1:9 7Cycl.



Overall Results for sample 6 : B55 Soni 1:9 7Cycl.

Number of peaks found: 18 Corr. Area 1: 672.7
 Noise: 0.2

Peak table for sample 6 : B55 Soni 1:9 7Cycl.

Peak	Size [bp]	Conc. [pg/μl]	Molarity [pmol/l]	Observations
1	35	125.00	5,411.3	Lower Marker
2	47	292.66	9,525.5	
3	55	36.77	1,012.1	
4	83	22.59	413.2	
5	389	5.92	23.1	
6	416	14.54	53.0	
7	426	8.80	31.3	
8	471	8.70	28.0	
9	494	14.93	45.8	
10	520	13.65	39.8	
11	561	27.78	75.0	
12	569	14.16	37.7	
13	621	26.86	65.6	
14	697	23.63	51.4	
15	839	40.61	73.3	
16	888	14.92	25.5	
17	1,038	11.19	16.3	
18	1,157	10.17	13.3	
19	1,739	12.03	10.5	
20	10,380	75.00	10.9	Upper Marker

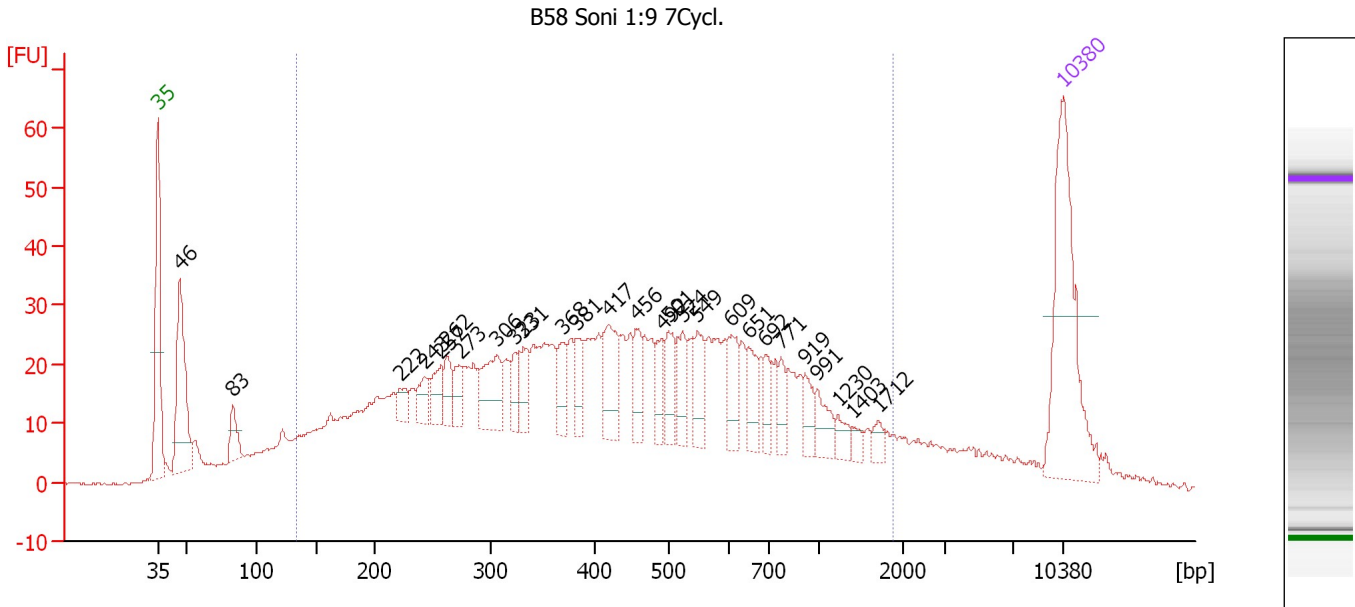
Region table for sample 6 : B55 Soni 1:9 7Cycl.

From [bp]	To [bp]	Average Size [bp]	Molarity [pmol/l]	Conc. [pg/μl]	Corr. Area	% of Total	Size distribution in CV [%]	Color
200	2,119	660	2,795.2	836.32	672.7	65	58.5	Blue

Assay Class: High Sensitivity DNA Assay
 Data Path: C:\...ents and Settings\Bioanalyzer\2012-07-09\2012-07-09_001.xad

Created: 7/9/2012 10:06:57 AM
 Modified: 7/9/2012 10:50:43 AM

Electropherogram Summary Continued ...



Overall Results for sample 7 : B58 Soni 1:9 7Cycl.

Number of peaks found: 27 Corr. Area 1: 1,248.0
 Noise: 0.3

Peak table for sample 7 : B58 Soni 1:9 7Cycl.

Peak	Size [bp]	Conc. [pg/μl]	Molarity [pmol/l]	Observations
1	35	125.00	5,411.3	Lower Marker
2	46	84.11	2,750.6	
3	83	16.53	300.6	
4	222	10.20	69.5	
5	243	13.25	82.7	
6	257	15.47	91.4	
7	262	15.20	87.9	
8	273	13.30	73.7	
9	306	34.68	171.8	
10	323	13.11	61.4	
11	331	16.00	73.3	
12	368	16.20	66.7	
13	381	14.61	58.1	
14	417	32.08	116.5	
15	456	17.40	57.8	
16	492	13.85	42.7	
17	501	18.92	57.2	
18	524	18.20	52.7	
19	549	18.96	52.3	
20	609	21.57	53.7	
21	651	15.94	37.1	
22	692	10.97	24.0	
23	771	11.52	22.6	
24	919	10.65	17.6	
25	991	12.86	19.7	
26	1,230	6.82	8.4	

Assay Class: High Sensitivity DNA Assay
 Data Path: C:\...ents and Settings\Bioanalyzer\2012-07-09\2012-07-09_001.xad


Created: 7/9/2012 10:06:57 AM
 Modified: 7/9/2012 10:50:43 AM

Electropherogram Summary Continued ...

... Peak table for sample 7 : B58 Soni 1:9 7Cycl.

Peak	Size [bp]	Conc. [pg/μl]	Molarity [pmol/l]	Observations
27	1,403	3.72	4.0	
28	1,712	4.81	4.3	
29	10,380	75.00	10.9	Upper Marker

Region table for sample 7 : B58 Soni 1:9 7Cycl.

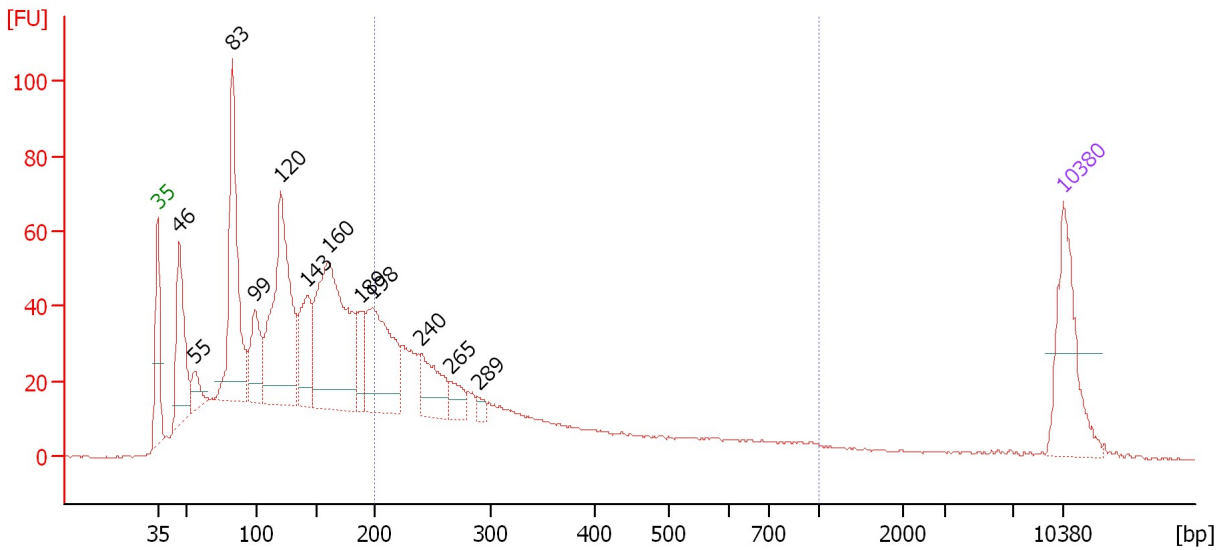
From [bp]	To [bp]	Average Size [bp]	Molarity [pmol/l]	Conc. [pg/μl]	Corr. Area	% of Total	Size distribution in CV [%]	Color
134	1,893	508	6,090.2	1,323.13	1,248.0	81	64.0	

Assay Class: High Sensitivity DNA Assay
 Data Path: C:\...ents and Settings\Bioanalyzer\2012-07-09\2012-07-09_001.xad

Created: 7/9/2012 10:06:57 AM
 Modified: 7/9/2012 10:50:43 AM

Electropherogram Summary Continued ...

B60 Soni 1:9 7Cycl.



Overall Results for sample 8 : B60 Soni 1:9 7Cycl.

Number of peaks found: 12 Corr. Area 1: 595.0
 Noise: 0.2

Peak table for sample 8 : B60 Soni 1:9 7Cycl.

Peak	Size [bp]	Conc. [pg/μl]	Molarity [pmol/l]	Observations
1	35	125.00	5,411.3	Lower Marker
2	46	124.26	4,084.4	
3	55	26.95	735.9	
4	83	215.31	3,937.4	
5	99	72.51	1,106.7	
6	120	256.83	3,229.6	
7	143	85.93	911.1	
8	160	274.29	2,596.4	
9	189	40.10	322.1	
10	198	147.57	1,127.5	
11	240	60.64	383.1	
12	265	22.67	129.4	
13	289	7.45	39.1	
14	10,380	75.00	10.9	Upper Marker

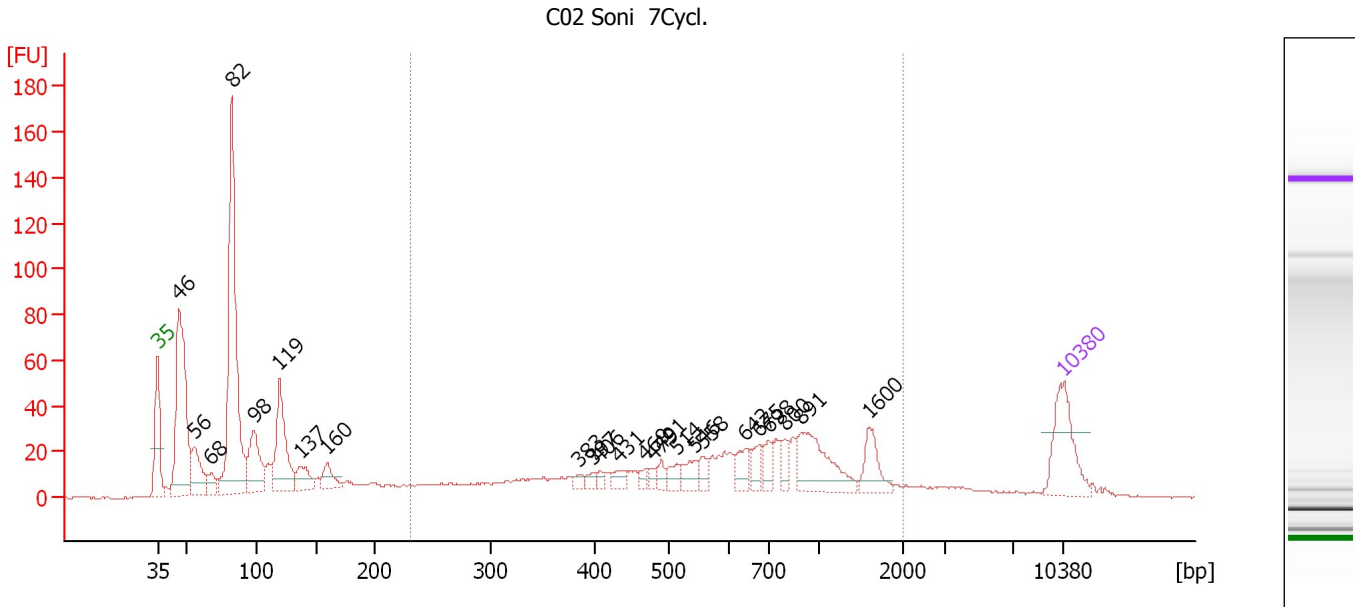
Region table for sample 8 : B60 Soni 1:9 7Cycl.

From [bp]	To [bp]	Average Size [bp]	Molarity [pmol/l]	Conc. [pg/μl]	Corr. Area	% of Total	Size distribution in CV [%]	Color
200	1,000	344	3,786.2	708.47	595.0	32	46.4	Blue

Assay Class: High Sensitivity DNA Assay
 Data Path: C:\...ents and Settings\Bioanalyzer\2012-07-09\2012-07-09_001.xad

Created: 7/9/2012 10:06:57 AM
 Modified: 7/9/2012 10:50:43 AM

Electropherogram Summary Continued ...



Overall Results for sample 9 : C02 Soni 7Cycl.

Number of peaks found: 24 Corr. Area 1: 632.9
 Noise: 0.3

Peak table for sample 9 : C02 Soni 7Cycl.

Peak	Size [bp]	Conc. [pg/μl]	Molarity [pmol/l]	Observations
1	35	125.00	5,411.3	Lower Marker
2	46	330.15	10,839.5	
3	56	75.62	2,060.0	
4	68	27.45	615.8	
5	82	484.86	8,937.0	
6	98	108.17	1,668.2	
7	119	154.47	1,960.3	
8	137	41.71	461.0	
9	160	34.17	324.2	
10	383	9.24	36.5	
11	397	9.46	36.1	
12	406	9.17	34.2	
13	431	16.10	56.6	
14	469	9.78	31.6	
15	479	10.01	31.7	
16	491	12.41	38.3	
17	514	19.48	57.4	
18	546	24.06	66.8	
19	558	15.96	43.3	
20	642	25.97	61.3	
21	675	23.46	52.7	
22	698	24.25	52.6	
23	800	19.71	37.4	
24	891	96.78	164.5	
25	1,600	39.62	37.5	
26	10,380	75.00	10.9	Upper Marker

Assay Class: High Sensitivity DNA Assay
Data Path: C:\...ents and Settings\Bioanalyzer\2012-07-09\2012-07-09_001.xad

Created: 7/9/2012 10:06:57 AM
Modified: 7/9/2012 10:50:43 AM

Electropherogram Summary Continued ...

... Region table for sample 9 : C02 Soni 7Cycl.

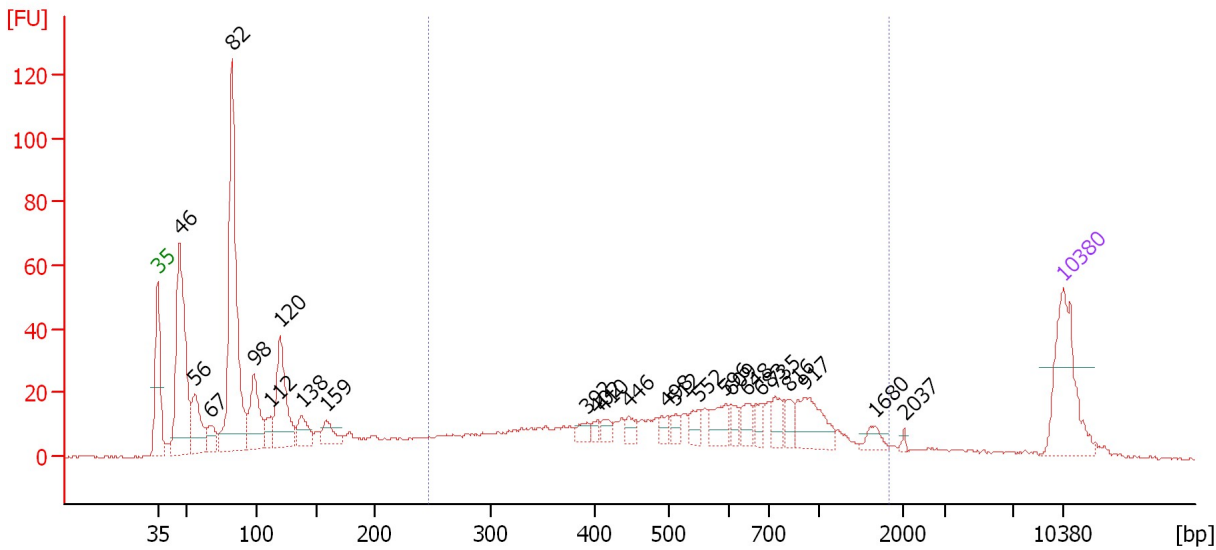
From [bp]	To [bp]	Average Size [bp]	Molarity [pmol/l]	Conc. [pg/μl]	Corr. Area	% of Total	Size distribution in CV [%]	Color
231	1,996	720	2,481.4	822.42	632.9	42	55.4	■

Assay Class: High Sensitivity DNA Assay
 Data Path: C:\...ents and Settings\Bioanalyzer\2012-07-09\2012-07-09_001.xad

Created: 7/9/2012 10:06:57 AM
 Modified: 7/9/2012 10:50:43 AM

Electropherogram Summary Continued ...

C03 Soni 1:9 7Cycl.



Overall Results for sample 10 : C03 Soni 1:9 7Cycl.

Number of peaks found: 25 Corr. Area 1: 527.5
 Noise: 0.3

Peak table for sample 10 : C03 Soni 1:9 7Cycl.

Peak	Size [bp]	Conc. [pg/μl]	Molarity [pmol/l]	Observations
1	35	125.00	5,411.3	Lower Marker
2	46	239.35	7,842.2	
3	56	63.15	1,713.5	
4	67	24.86	558.8	
5	82	330.13	6,085.6	
6	98	77.81	1,198.4	
7	112	23.96	325.3	
8	120	103.68	1,312.1	
9	138	30.71	336.9	
10	159	24.48	233.7	
11	392	11.52	44.5	
12	402	6.90	26.0	
13	410	10.16	37.5	
14	446	11.79	40.1	
15	498	11.16	33.9	
16	512	9.14	27.0	
17	552	12.84	35.2	
18	596	23.38	59.4	
19	609	11.76	29.3	
20	648	18.35	42.9	
21	683	13.43	29.8	
22	735	19.97	41.2	
23	816	13.91	25.8	
24	917	45.51	75.2	
25	1,680	10.41	9.4	
26	2,037	2.23	1.7	

Assay Class: High Sensitivity DNA Assay
Data Path: C:\...ents and Settings\Bioanalyzer\2012-07-09\2012-07-09_001.xad

Created: 7/9/2012 10:06:57 AM
Modified: 7/9/2012 10:50:43 AM

Electropherogram Summary Continued ...**... Peak table for sample 10 : C03 Soni 1:9 7Cycl.**

Peak	Size [bp]	Conc. [pg/ μ l]	Molarity [pmol/l]	Observations
27	10,380	75.00	10.9	Upper Marker

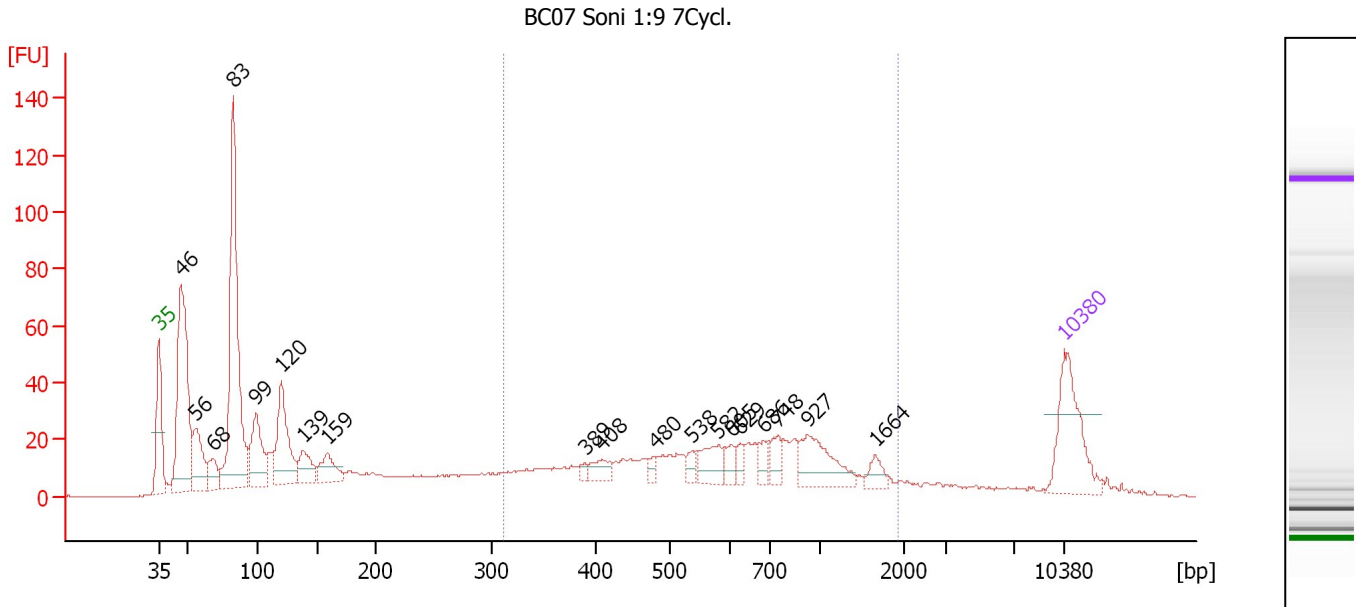
Region table for sample 10 : C03 Soni 1:9 7Cycl.

From [bp]	To [bp]	Average Size [bp]	Molarity [pmol/l]	Conc. [pg/ μ l]	Corr. Area	% of Total	Size distribution in CV [%]	Color
246	1,842	629	2,125.9	656.36	527.5	43	52.4	

Assay Class: High Sensitivity DNA Assay
 Data Path: C:\...ents and Settings\Bioanalyzer\2012-07-09\2012-07-09_001.xad

Created: 7/9/2012 10:06:57 AM
 Modified: 7/9/2012 10:50:43 AM

Electropherogram Summary Continued ...



Overall Results for sample 11 : BC07 Soni 1:9 7Cycl.

Number of peaks found: 19 Corr. Area 1: 522.3
 Noise: 0.3

Peak table for sample 11 : BC07 Soni 1:9 7Cycl.

Peak	Size [bp]	Conc. [pg/μl]	Molarity [pmol/l]	Observations
1	35	125.00	5,411.3	Lower Marker
2	46	273.03	8,922.3	
3	56	74.83	2,020.0	
4	68	33.90	757.4	
5	83	355.33	6,504.8	
6	99	87.45	1,336.8	
7	120	113.01	1,423.6	
8	139	39.77	434.0	
9	159	39.04	371.6	
10	389	5.82	22.7	
11	408	19.82	73.6	
12	480	9.14	28.9	
13	538	10.92	30.8	
14	582	33.27	86.7	
15	605	15.63	39.1	
16	629	11.88	28.6	
17	686	16.03	35.4	
18	748	19.08	38.7	
19	927	60.06	98.1	
20	1,664	13.30	12.1	
21	10,380	75.00	10.9	Upper Marker

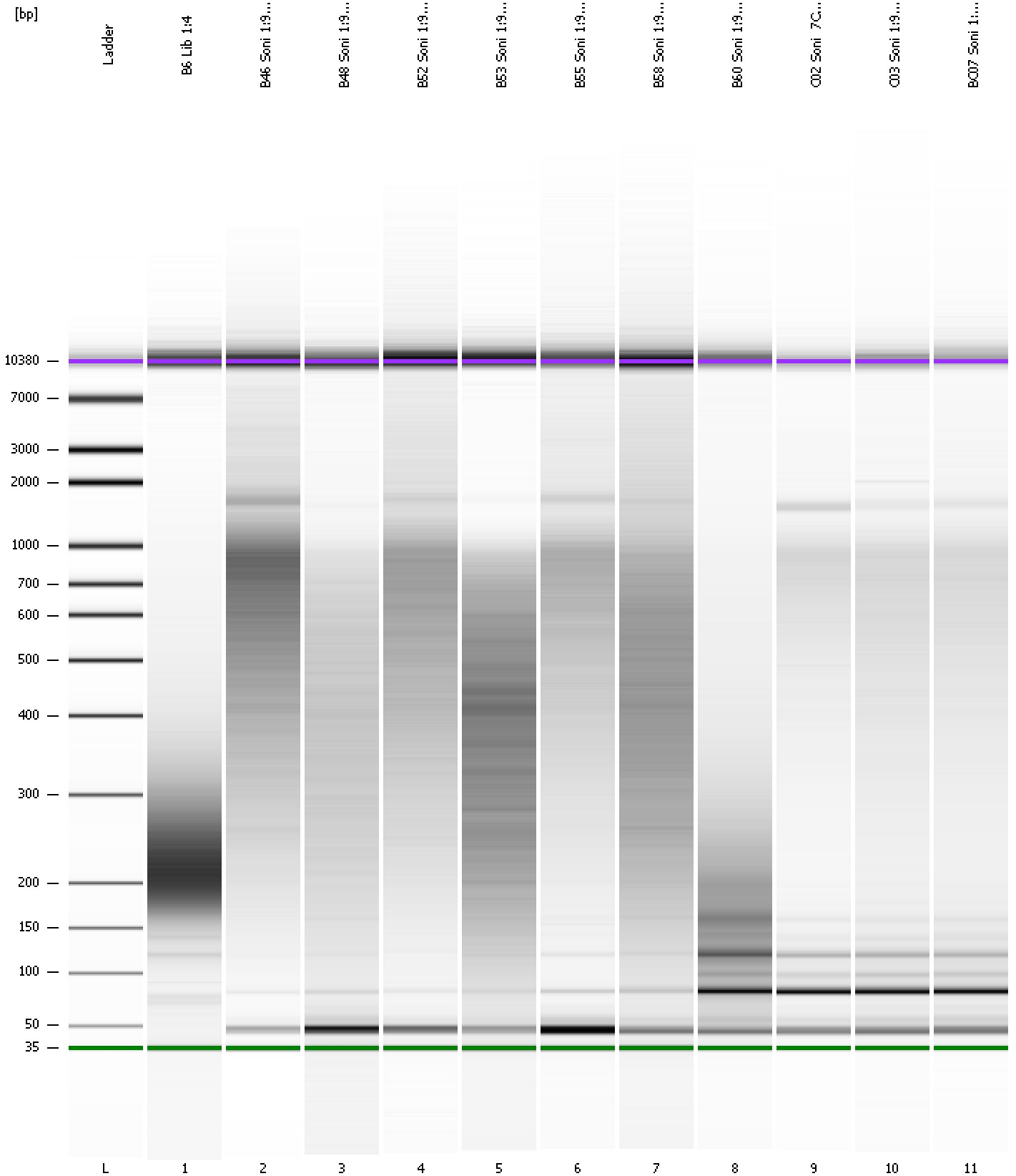
Region table for sample 11 : BC07 Soni 1:9 7Cycl.

From [bp]	To [bp]	Average Size [bp]	Molarity [pmol/l]	Conc. [pg/μl]	Corr. Area	% of Total	Size distribution in CV [%]	Color
312	1,937	702	1,705.6	610.03	522.3	36	51.5	Blue

Assay Class: High Sensitivity DNA Assay
Data Path: C:\...ents and Settings\Bioanalyzer\2012-07-09\2012-07-09_001.xad

Created: 7/9/2012 10:06:57 AM
Modified: 7/9/2012 10:50:43 AM

Gel Image



Assay Class: High Sensitivity DNA Assay
 Data Path: C:\...ents and Settings\Bioanalyzer\2012-07-09\2012-07-09_001.xad

Created: 7/9/2012 10:06:57 AM
 Modified: 7/9/2012 10:50:43 AM

Run Logbook

Description	Number	Source	Category	Sub Category	Time	Time Zone	User	Host
Run ended on port 1 (Number of wells acquired: 12)		Instrument	Run		7/9/2012 10:48:16 AM	(GMT --07:00) Pacific Standard Time	UC Davis	D8XSMGH1
Run started on port 1 (File: C:\Documents and Settings\Bioanalyzer\2012-07-09\2012-07-09_001.xad)		Instrument	Run		7/9/2012 10:07:03 AM	(GMT --07:00) Pacific Standard Time	UC Davis	D8XSMGH1
Product Number : G2938B		Instrument	Run		7/9/2012 10:07:03 AM	(GMT --07:00) Pacific Standard Time	UC Davis	D8XSMGH1
Name :		Instrument	Run		7/9/2012 10:07:03 AM	(GMT --07:00) Pacific Standard Time	UC Davis	D8XSMGH1
Vendor : Agilent Technologies		Instrument	Run		7/9/2012 10:07:03 AM	(GMT --07:00) Pacific Standard Time	UC Davis	D8XSMGH1
Serial# : DE13701086		Instrument	Run		7/9/2012 10:07:03 AM	(GMT --07:00) Pacific Standard Time	UC Davis	D8XSMGH1
Firmware : C.01.069		Instrument	Run		7/9/2012 10:07:03 AM	(GMT --07:00) Pacific Standard Time	UC Davis	D8XSMGH1
Cartridge : Electrode		Instrument	Run		7/9/2012 10:07:03 AM	(GMT --07:00) Pacific Standard Time	UC Davis	D8XSMGH1