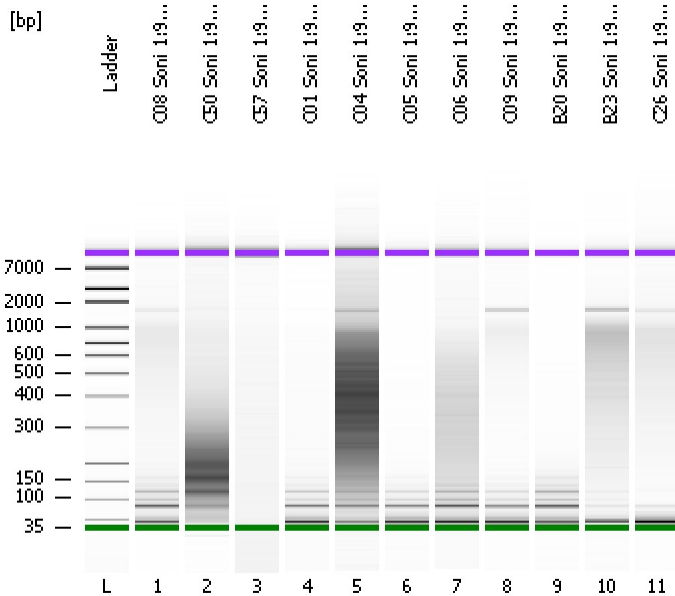


Assay Class: High Sensitivity DNA Assay  
Data Path: C:\...ents and Settings\Bioanalyzer\2012-07-09\2012-07-09\_004.xad

Created: 7/9/2012 1:46:14 PM  
Modified: 7/9/2012 2:29:28 PM

**Electrophoresis File Run Summary**



Instrument Information:

Instrument Name: DE13701086      Firmware: C.01.069  
Serial#: DE13701086      Type: G2938B

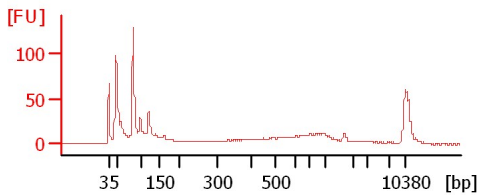
Assay Information:

Assay Origin Path: C:\Program Files\Agilent\2100 bioanalyzer\2100 expert\assays\dsDNA\High Sensitivity DNA.xsy  
Assay Class: High Sensitivity DNA Assay  
Version: 1.03  
Assay Comments: Copyright © 2003-2010 Agilent Technologies

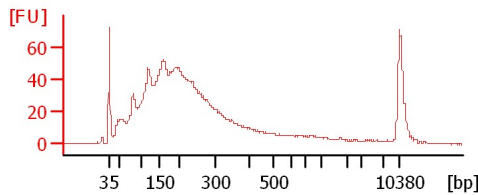
Chip Information:

Chip Lot #:  
Reagent Kit Lot #:  
Chip Comments:

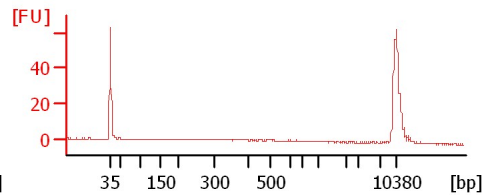
**C08 Soni 1:9 9Cycl.**



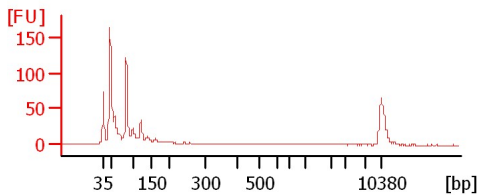
**C50 Soni 1:9 9Cycl.**



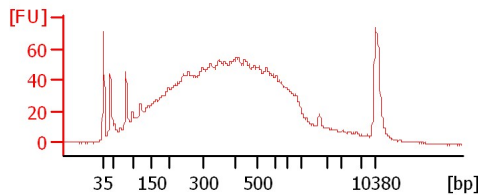
**C57 Soni 1:9 9Cycl.**



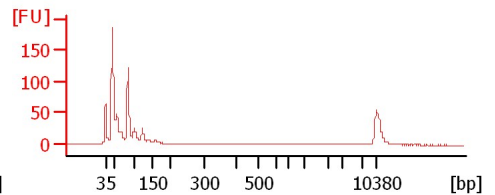
**C01 Soni 1:9 9Cycl.**



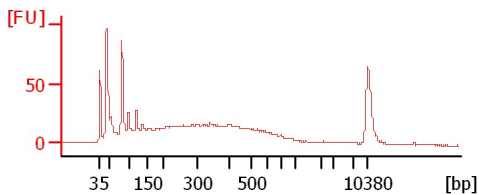
**C04 Soni 1:9 9Cycl.**



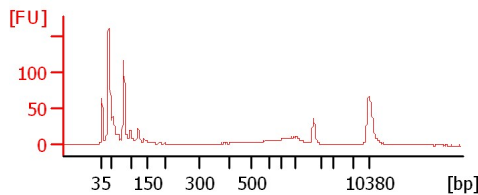
**C05 Soni 1:9 9Cycl.**



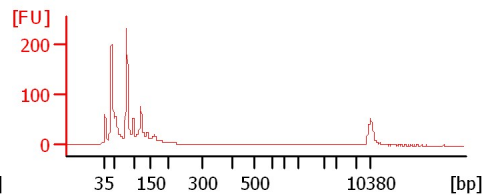
**C06 Soni 1:9 9Cycl.**



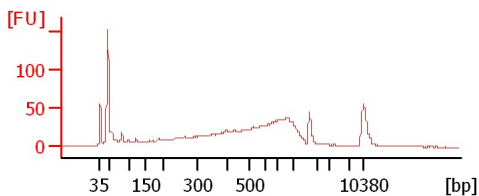
**C09 Soni 1:9 9Cycl.**



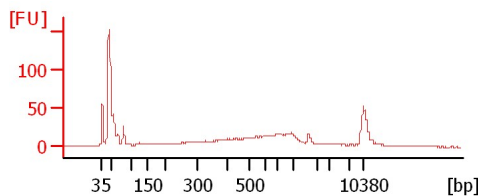
**B20 Soni 1:9 9Cycl.**



**B23 Soni 1:9 9Cycl.**



**C26 Soni 1:9 9Cycl.**



Assay Class: High Sensitivity DNA Assay  
Data Path: C:\...ents and Settings\Bioanalyzer\2012-07-09\2012-07-09\_004.xad

Created: 7/9/2012 1:46:14 PM  
Modified: 7/9/2012 2:29:28 PM

**Electrophoresis File Run Summary (Chip Summary)**

Sample Name	Sample Comment	Rest. Digest	Status	Observation	Result Label	Result Color
C08 Soni 1:9 9Cycl.		<input type="checkbox"/>	✓			
C50 Soni 1:9 9Cycl.		<input type="checkbox"/>	✓			
C57 Soni 1:9 9Cycl.		<input type="checkbox"/>	✓			
C01 Soni 1:9 9Cycl.		<input type="checkbox"/>	✓			
C04 Soni 1:9 9Cycl.		<input type="checkbox"/>	✓			
C05 Soni 1:9 9Cycl.		<input type="checkbox"/>	✓			
C06 Soni 1:9 9Cycl.		<input type="checkbox"/>	✓			
C09 Soni 1:9 9Cycl.		<input type="checkbox"/>	✓			
B20 Soni 1:9 9Cycl.		<input type="checkbox"/>	✓			
B23 Soni 1:9 9Cycl.		<input type="checkbox"/>	✓			
C26 Soni 1:9 9Cycl.		<input type="checkbox"/>	✓			
Ladder		<input type="checkbox"/>	✓			

**Chip Lot #**

**Reagent Kit Lot #**

**Chip Comments :**

Assay Class: High Sensitivity DNA Assay  
Data Path: C:\...ents and Settings\Bioanalyzer\2012-07-09\2012-07-09\_004.xad

Created: 7/9/2012 1:46:14 PM  
Modified: 7/9/2012 2:29:28 PM

**Electrophoresis Assay Details**

**General Analysis Settings**

Number of Available Sample and Ladder Wells (Max.) : 12  
Minimum Visible Range [s] : 32  
Maximum Visible Range [s] : 138  
Start Analysis Time Range [s] : 33  
End Analysis Time Range [s] : 137.5  
Ladder Concentration [pg/μl] : 1950  
Uses Standard Area for Ladder Fragments  
Lower Marker Concentration [pg/μl] : 125  
Upper Marker Concentration [pg/μl] : 75  
Used Upper Marker for Quantitation  
Standard Curve Fit is Point to Point  
Show Data Aligned to Lower and Upper Marker

**Integrator Settings**

Integration Start Time [s] : 33.05  
Integration End Time [s] : 137  
Slope Threshold : 0.8  
Height Threshold [FU] : 5  
Area Threshold : 0.1  
Width Threshold [s] : 0.6  
Baseline Plateau [s] : 0.5

**Filter Settings**

Filter Width [s] : 0.5  
Polynomial Order : 4

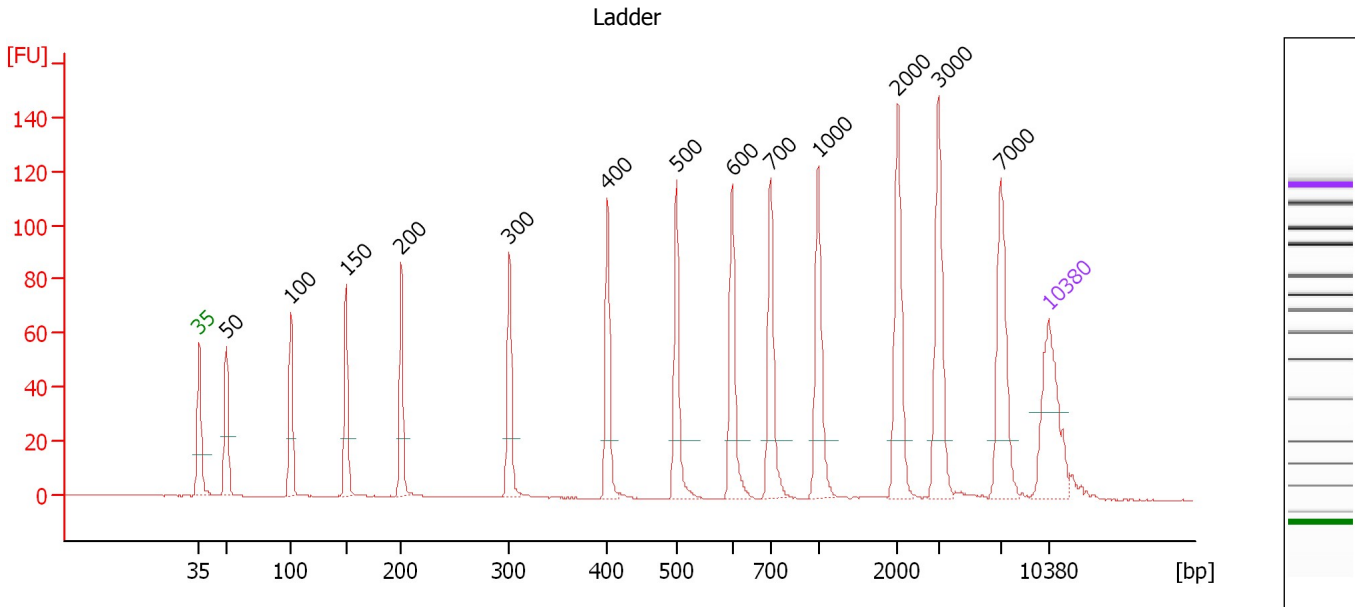
**Ladder**

Ladder Peak	Size	Area
1	35	160
2	50	210
3	100	208
4	150	221
5	200	242
6	300	270
7	400	305
8	500	306
9	600	336
10	700	321
11	1000	366
12	2000	413
13	3000	411
14	7000	400
15	10380	214

Assay Class: High Sensitivity DNA Assay  
 Data Path: C:\...ents and Settings\Bioanalyzer\2012-07-09\2012-07-09\_004.xad

Created: 7/9/2012 1:46:14 PM  
 Modified: 7/9/2012 2:29:28 PM

**Electropherogram Summary**



**Overall Results for Ladder**

Noise: 0.1

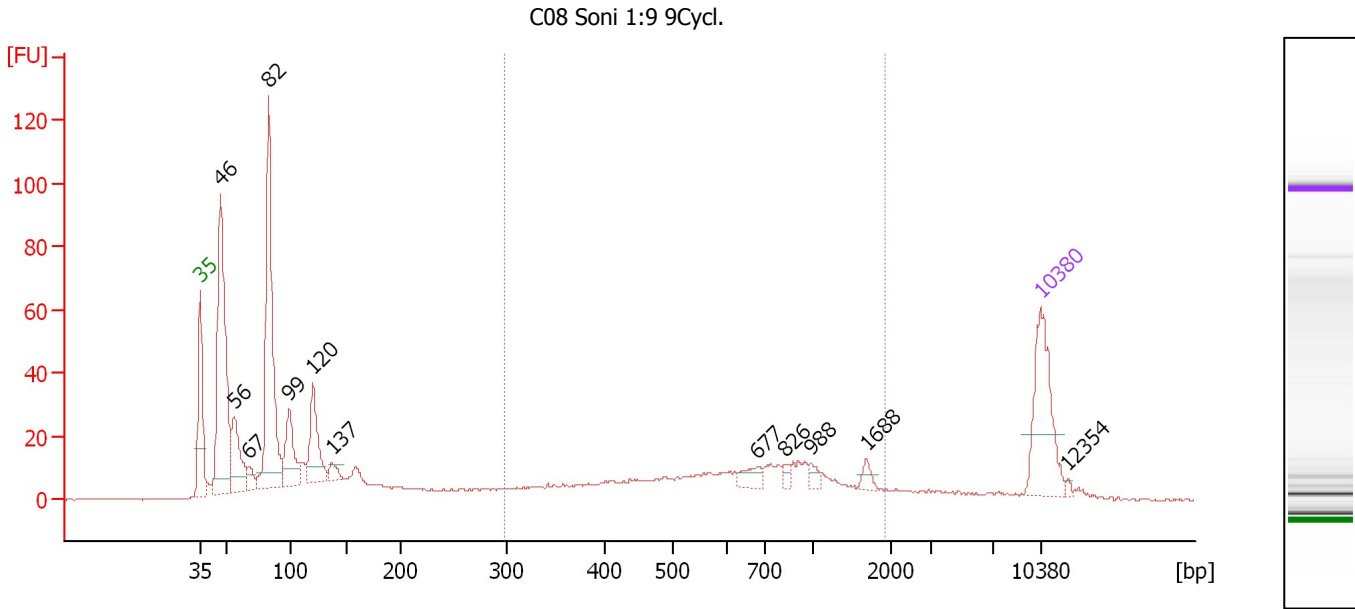
**Peak table for Ladder**

Peak	Size [bp]	Conc. [pg/μl]	Molarity [pmol/l]	Observations
1	35	125.00	5,411.3	Lower Marker
2	50	150.00	4,545.5	Ladder Peak
3	100	150.00	2,272.7	Ladder Peak
4	150	150.00	1,515.2	Ladder Peak
5	200	150.00	1,136.4	Ladder Peak
6	300	150.00	757.6	Ladder Peak
7	400	150.00	568.2	Ladder Peak
8	500	150.00	454.5	Ladder Peak
9	600	150.00	378.8	Ladder Peak
10	700	150.00	324.7	Ladder Peak
11	1,000	150.00	227.3	Ladder Peak
12	2,000	150.00	113.6	Ladder Peak
13	3,000	150.00	75.8	Ladder Peak
14	7,000	150.00	32.5	Ladder Peak
15	10,380	75.00	10.9	Upper Marker

Assay Class: High Sensitivity DNA Assay  
 Data Path: C:\...ents and Settings\Bioanalyzer\2012-07-09\2012-07-09\_004.xad

Created: 7/9/2012 1:46:14 PM  
 Modified: 7/9/2012 2:29:28 PM

**Electropherogram Summary Continued ...**



**Overall Results for sample 1 : C08 Soni 1:9 9Cycl.**

Number of peaks found: 12                      Corr. Area 1: 266.3  
 Noise: 0.2

**Peak table for sample 1 : C08 Soni 1:9 9Cycl.**

Peak	Size [bp]	Conc. [pg/μl]	Molarity [pmol/l]	Observations
1	35	125.00	5,411.3	Lower Marker
2	46	316.31	10,351.8	
3	56	85.47	2,326.7	
4	67	17.43	392.1	
5	82	302.43	5,561.7	
6	99	73.55	1,129.3	
7	120	84.53	1,068.7	
8	137	13.75	151.7	
9	677	15.94	35.7	
10	826	6.14	11.3	
11	988	7.60	11.7	
12	1,688	8.10	7.3	
13	10,380	75.00	10.9	Upper Marker
14	12,354	0.00	0.0	

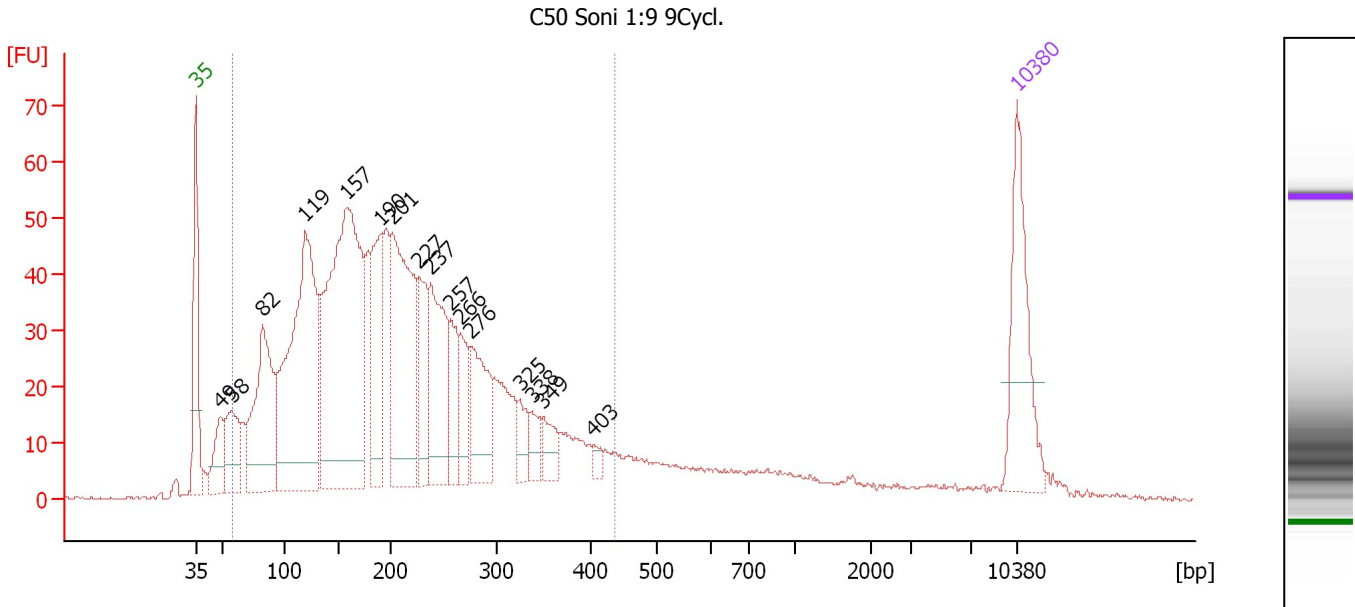
**Region table for sample 1 : C08 Soni 1:9 9Cycl.**

From [bp]	To [bp]	Average Size [bp]	Molarity [pmol/l]	Conc. [pg/μl]	Corr. Area	% of Total	Size distribution in CV [%]	Color
298	1,911	733	843.2	306.62	266.3	26	52.0	Blue

Assay Class: High Sensitivity DNA Assay  
 Data Path: C:\...ents and Settings\Bioanalyzer\2012-07-09\2012-07-09\_004.xad

Created: 7/9/2012 1:46:14 PM  
 Modified: 7/9/2012 2:29:28 PM

**Electropherogram Summary Continued ...**



**Overall Results for sample 2 : C50 Soni 1:9 9Cycl.**

Number of peaks found: 16                      Corr. Area 1: 1,605.4  
 Noise: 0.3

**Peak table for sample 2 : C50 Soni 1:9 9Cycl.**

Peak	Size [bp]	Conc. [pg/μl]	Molarity [pmol/l]	Observations
1	35	125.00	5,411.3	Lower Marker
2	49	48.23	1,501.1	
3	58	66.90	1,761.4	
4	82	181.12	3,333.5	
5	119	368.93	4,689.7	
6	157	444.58	4,289.6	
7	190	110.16	877.7	
8	201	219.66	1,658.3	
9	227	70.92	474.0	
10	237	126.23	805.8	
11	257	48.31	285.1	
12	266	42.94	244.2	
13	276	86.10	473.4	
14	325	22.64	105.6	
15	338	19.28	86.5	
16	349	23.28	100.9	
17	403	7.50	28.2	
18	10,380	75.00	10.9	Upper Marker

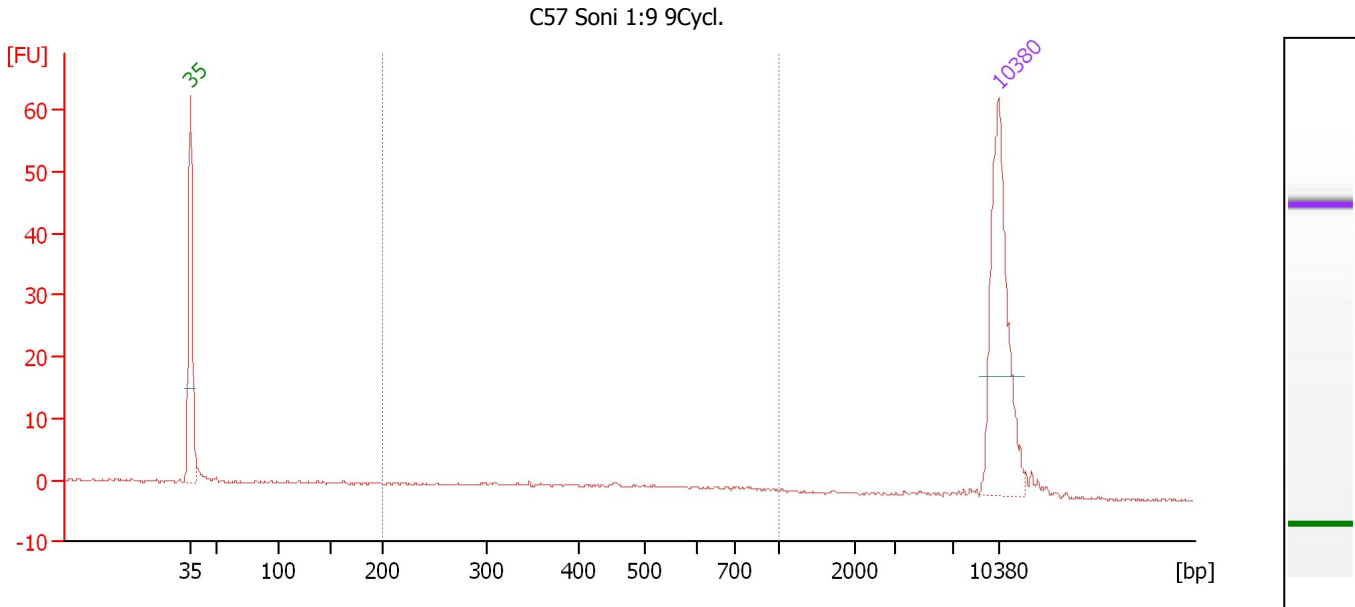
**Region table for sample 2 : C50 Soni 1:9 9Cycl.**

From [bp]	To [bp]	Average Size [bp]	Molarity [pmol/l]	Conc. [pg/μl]	Corr. Area	% of Total	Size distribution in CV [%]	Color
59	434	205	22,067.3	2,277.10	1,605.4	87	41.3	Blue

Assay Class: High Sensitivity DNA Assay  
 Data Path: C:\...ents and Settings\Bioanalyzer\2012-07-09\2012-07-09\_004.xad

Created: 7/9/2012 1:46:14 PM  
 Modified: 7/9/2012 2:29:28 PM

**Electropherogram Summary Continued ...**



**Overall Results for sample 3 : C57 Soni 1:9 9Cycl.**

Number of peaks found: 0                      Corr. Area 1: 31.6  
 Noise: 0.2

**Peak table for sample 3 : C57 Soni 1:9 9Cycl.**

Peak	Size [bp]	Conc. [pg/μl]	Molarity [pmol/l]	Observations
1	35	125.00	5,411.3	Lower Marker
2	10,380	75.00	10.9	Upper Marker

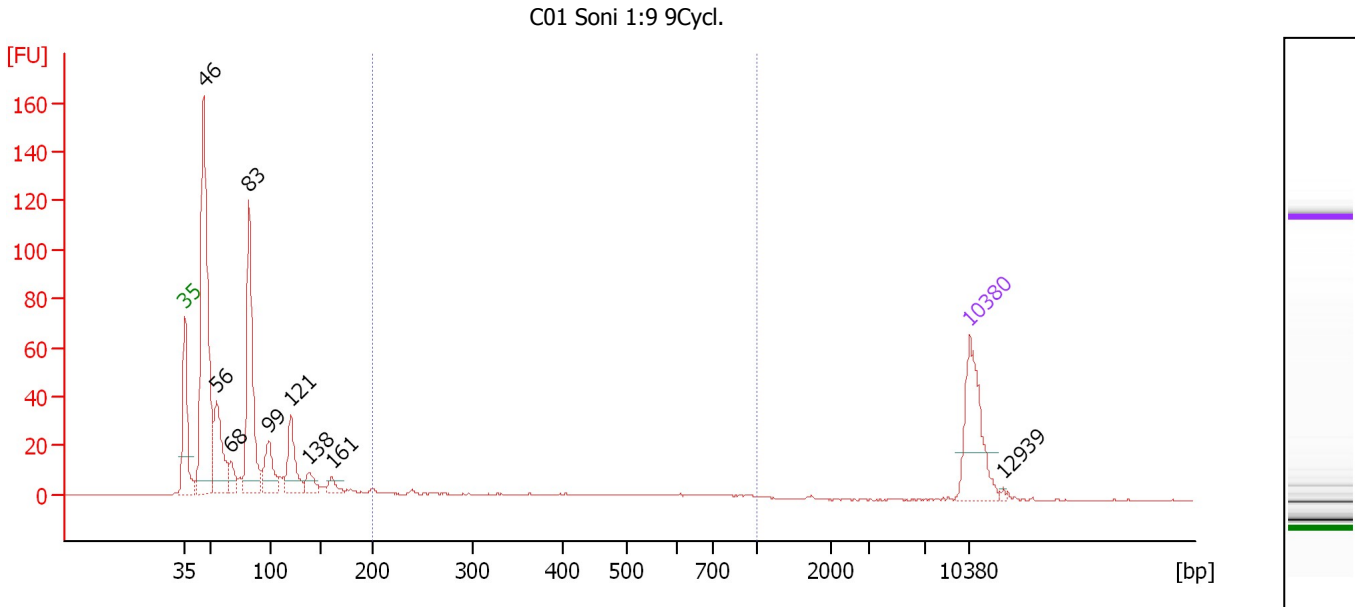
**Region table for sample 3 : C57 Soni 1:9 9Cycl.**

From [bp]	To [bp]	Average Size [bp]	Molarity [pmol/l]	Conc. [pg/μl]	Corr. Area	% of Total	Size distribution in CV [%]	Color
200	1,000	467	145.6	35.89	31.6	48	40.0	Blue

Assay Class: High Sensitivity DNA Assay  
 Data Path: C:\...ents and Settings\Bioanalyzer\2012-07-09\2012-07-09\_004.xad

Created: 7/9/2012 1:46:14 PM  
 Modified: 7/9/2012 2:29:28 PM

**Electropherogram Summary Continued ...**



**Overall Results for sample 4 : C01 Soni 1:9 9Cycl.**

Number of peaks found: 9                      Corr. Area 1: 52.6  
 Noise: 0.2

**Peak table for sample 4 : C01 Soni 1:9 9Cycl.**

Peak	Size [bp]	Conc. [pg/μl]	Molarity [pmol/l]	Observations
1	35	125.00	5,411.3	Lower Marker
2	46	439.67	14,440.0	
3	56	118.81	3,229.6	
4	68	27.20	607.7	
5	83	241.97	4,440.9	
6	99	64.06	979.4	
7	121	72.29	906.8	
8	138	22.32	245.2	
9	161	13.40	126.2	
10	10,380	75.00	10.9	Upper Marker
11	12,939	0.00	0.0	

**Region table for sample 4 : C01 Soni 1:9 9Cycl.**

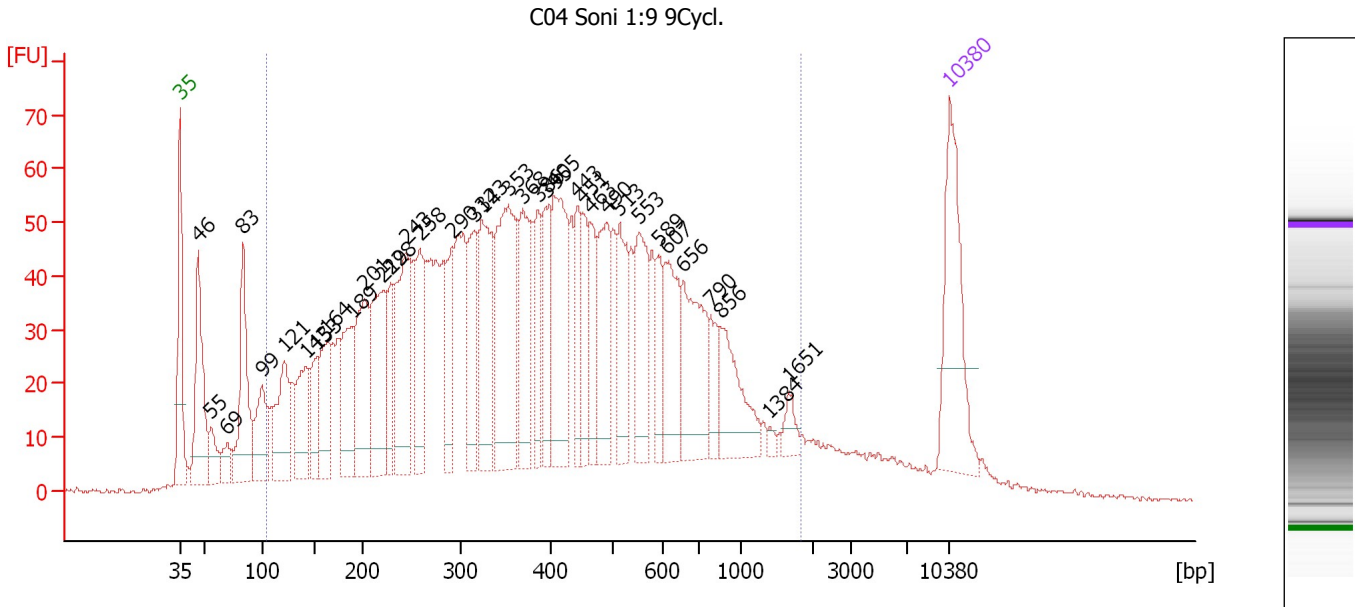
From [bp]	To [bp]	Average Size [bp]	Molarity [pmol/l]	Conc. [pg/μl]	Corr. Area	% of Total	Size distribution in CV [%]	Color
200	1,000	447	266.5	60.51	52.6	7	43.8	Blue



Assay Class: High Sensitivity DNA Assay  
 Data Path: C:\...ents and Settings\Bioanalyzer\2012-07-09\2012-07-09\_004.xad

Created: 7/9/2012 1:46:14 PM  
 Modified: 7/9/2012 2:29:28 PM

**Electropherogram Summary Continued ...**



**Overall Results for sample 5 : C04 Soni 1:9 9Cycl.**

Number of peaks found: 36                      Corr. Area 1: 2,580.6  
 Noise: 0.4

**Peak table for sample 5 : C04 Soni 1:9 9Cycl.**

Peak	Size [bp]	Conc. [pg/μl]	Molarity [pmol/l]	Observations
1	35	125.00	5,411.3	Lower Marker
2	46	113.66	3,741.7	
3	55	27.38	749.5	
4	69	19.97	438.4	
5	83	107.24	1,965.2	
6	99	61.30	941.7	
7	121	80.11	1,006.0	
8	143	65.27	691.9	
9	153	34.82	344.8	
10	164	63.10	583.9	
11	189	74.23	595.4	
12	201	93.95	707.4	
13	219	103.01	712.2	
14	228	44.38	295.2	
15	243	114.71	715.2	
16	258	80.26	471.9	
17	290	47.25	246.6	
18	314	65.76	317.5	
19	323	100.62	471.4	
20	353	148.00	635.6	
21	368	71.45	293.9	
22	386	43.92	172.5	
23	395	50.38	193.4	
24	405	109.47	409.2	
25	443	41.23	141.0	
26	451	37.11	124.5	

Assay Class: High Sensitivity DNA Assay  
 Data Path: C:\...ents and Settings\Bioanalyzer\2012-07-09\2012-07-09\_004.xad


Created: 7/9/2012 1:46:14 PM  
 Modified: 7/9/2012 2:29:28 PM

**Electropherogram Summary Continued ...**

**... Peak table for sample 5 : C04 Soni 1:9 9Cycl.**

Peak	Size [bp]	Conc. [pg/μl]	Molarity [pmol/l]	Observations
27	463	37.92	124.0	
28	490	68.32	211.3	
29	513	56.24	166.1	
30	553	63.20	173.1	
31	589	29.46	75.8	
32	607	60.13	150.0	
33	656	79.63	183.8	
34	790	20.09	38.5	
35	856	56.75	100.4	
36	1,384	3.25	3.6	
37	1,651	10.48	9.6	
38	10,380	75.00	10.9	Upper Marker

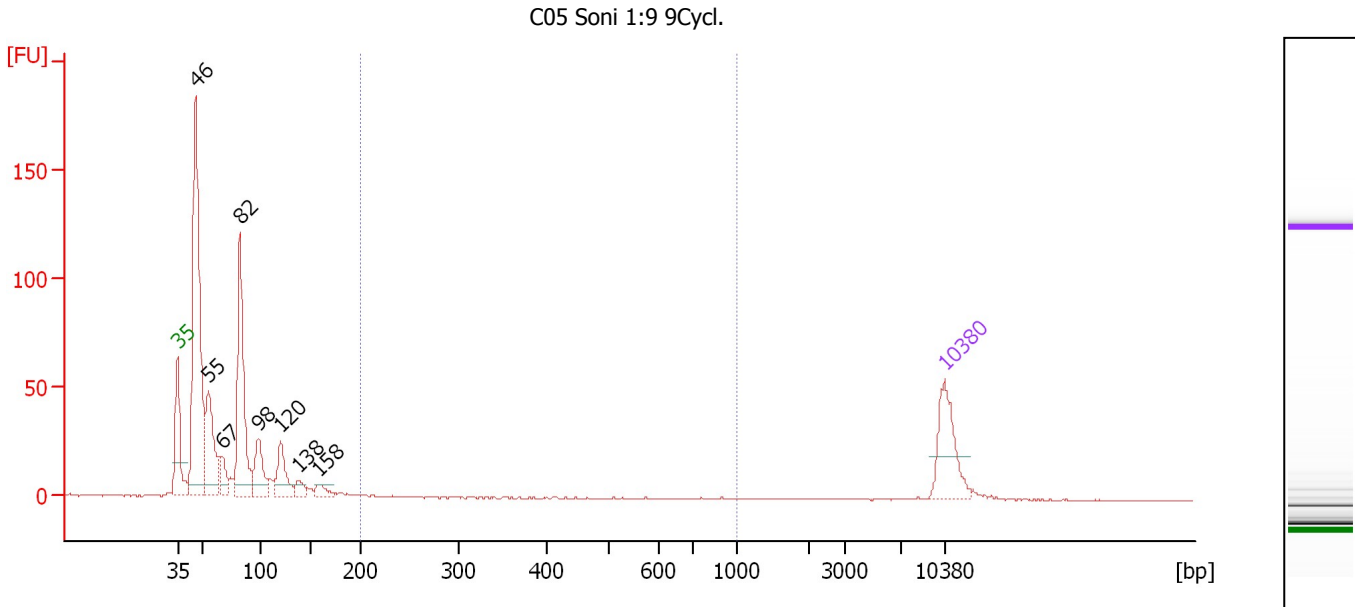
**Region table for sample 5 : C04 Soni 1:9 9Cycl.**

From [bp]	To [bp]	Average Size [bp]	Molarity [pmol/l]	Conc. [pg/μl]	Corr. Area	% of Total	Size distribution in CV [%]	Color
103	1,831	444	15,025.4	2,817.40	2,580.6	87	62.6	

Assay Class: High Sensitivity DNA Assay  
 Data Path: C:\...ents and Settings\Bioanalyzer\2012-07-09\2012-07-09\_004.xad

Created: 7/9/2012 1:46:14 PM  
 Modified: 7/9/2012 2:29:28 PM

**Electropherogram Summary Continued ...**



**Overall Results for sample 6 : C05 Soni 1:9 9Cycl.**

Number of peaks found: 8                      Corr. Area 1: 1.7  
 Noise: 0.2

**Peak table for sample 6 : C05 Soni 1:9 9Cycl.**

Peak	Size [bp]	Conc. [pg/μl]	Molarity [pmol/l]	Observations
1	35	125.00	5,411.3	Lower Marker
2	46	581.24	19,118.5	
3	55	169.58	4,634.6	
4	67	44.08	998.8	
5	82	304.03	5,589.5	
6	98	86.04	1,324.7	
7	120	78.37	985.4	
8	138	21.76	238.8	
9	158	19.98	191.2	
10	10,380	75.00	10.9	Upper Marker

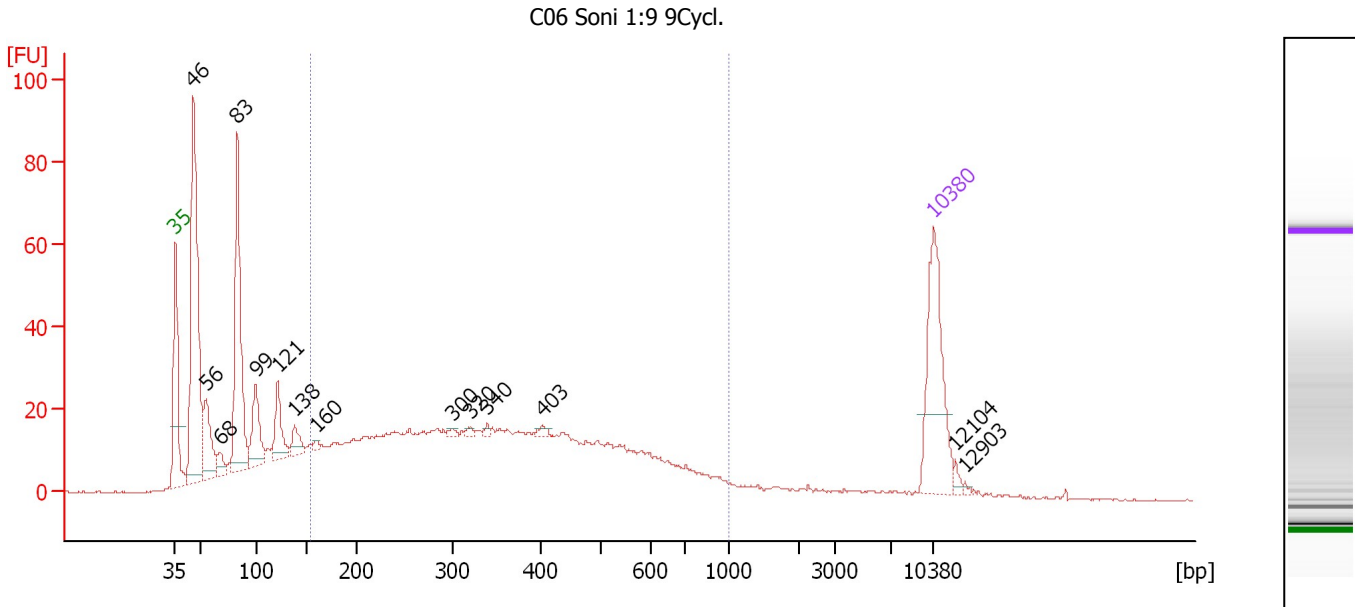
**Region table for sample 6 : C05 Soni 1:9 9Cycl.**

From [bp]	To [bp]	Average Size [bp]	Molarity [pmol/l]	Conc. [pg/μl]	Corr. Area	% of Total	Size distribution in CV [%]	Color
200	1,000	304	15.7	2.52	1.7	0	59.8	Blue

Assay Class: High Sensitivity DNA Assay  
 Data Path: C:\...ents and Settings\Bioanalyzer\2012-07-09\2012-07-09\_004.xad

Created: 7/9/2012 1:46:14 PM  
 Modified: 7/9/2012 2:29:28 PM

**Electropherogram Summary Continued ...**



**Setpoint Deviations for sample 7 : C06 Soni 1:9 9Cycl.**

Height Threshold [FU] : 2

**Overall Results for sample 7 : C06 Soni 1:9 9Cycl.**

Number of peaks found: 14                      Corr. Area 1: 692.8  
 Noise: 0.2

**Peak table for sample 7 : C06 Soni 1:9 9Cycl.**

Peak	Size [bp]	Conc. [pg/µl]	Molarity [pmol/l]	Observations
1	35	125.00	5,411.3	Lower Marker
2	46	273.57	8,972.7	
3	56	59.30	1,611.5	
4	68	12.45	276.4	
5	83	174.65	3,204.0	
6	99	53.10	814.5	
7	121	41.98	527.2	
8	138	17.75	195.1	
9	160	3.35	31.7	
10	300	3.32	16.8	
11	320	2.93	13.9	
12	340	2.39	10.6	
13	403	3.66	13.8	
14	10,380	75.00	10.9	Upper Marker
15	12,104	0.00	0.0	
16	12,903	0.00	0.0	

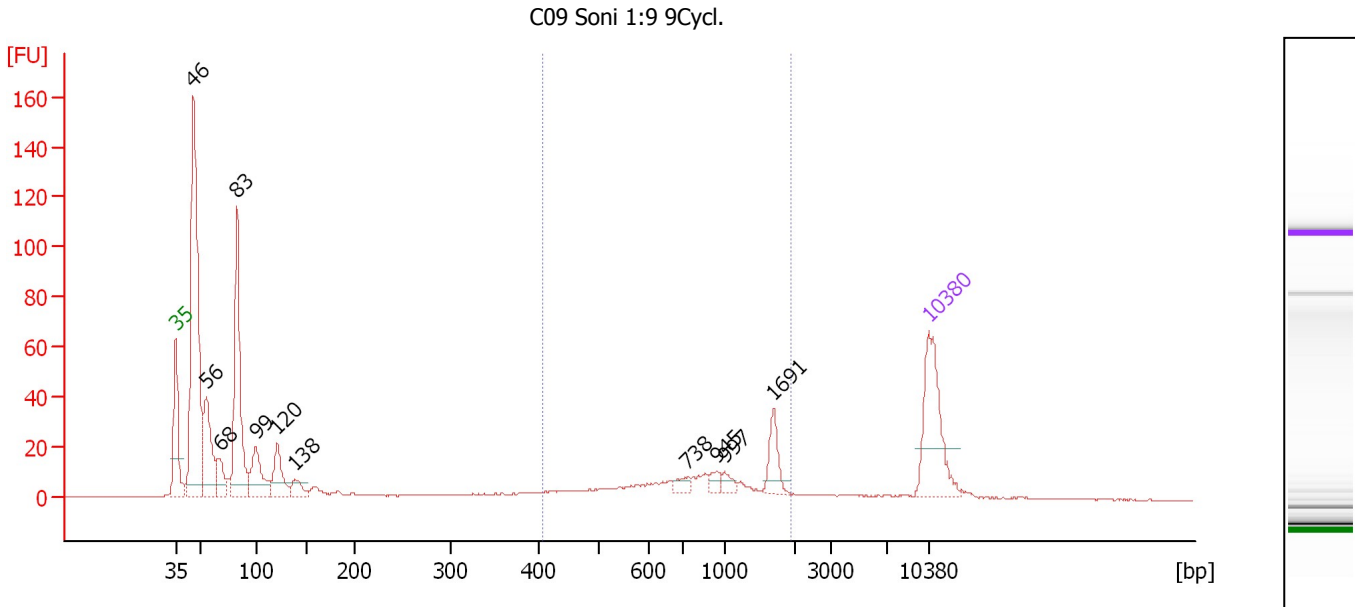
**Region table for sample 7 : C06 Soni 1:9 9Cycl.**

From [bp]	To [bp]	Average Size [bp]	Molarity [pmol/l]	Conc. [pg/µl]	Corr. Area	% of Total	Size distribution in CV [%]	Color
153	1,000	378	4,536.8	877.29	692.8	55	42.9	Blue

Assay Class: High Sensitivity DNA Assay  
 Data Path: C:\...ents and Settings\Bioanalyzer\2012-07-09\2012-07-09\_004.xad

Created: 7/9/2012 1:46:14 PM  
 Modified: 7/9/2012 2:29:28 PM

**Electropherogram Summary Continued ...**



**Overall Results for sample 8 : C09 Soni 1:9 9Cycl.**

Number of peaks found: 11                      Corr. Area 1: 175.1  
 Noise: 0.1

**Peak table for sample 8 : C09 Soni 1:9 9Cycl.**

Peak	Size [bp]	Conc. [pg/μl]	Molarity [pmol/l]	Observations
1	35	125.00	5,411.3	Lower Marker
2	46	431.67	14,235.8	
3	56	113.34	3,069.3	
4	68	37.22	834.4	
5	83	219.69	4,034.5	
6	99	68.53	1,050.9	
7	120	51.90	653.7	
8	138	19.70	216.0	
9	738	9.27	19.0	
10	945	8.85	14.2	
11	997	8.42	12.8	
12	1,691	25.45	22.8	
13	10,380	75.00	10.9	Upper Marker

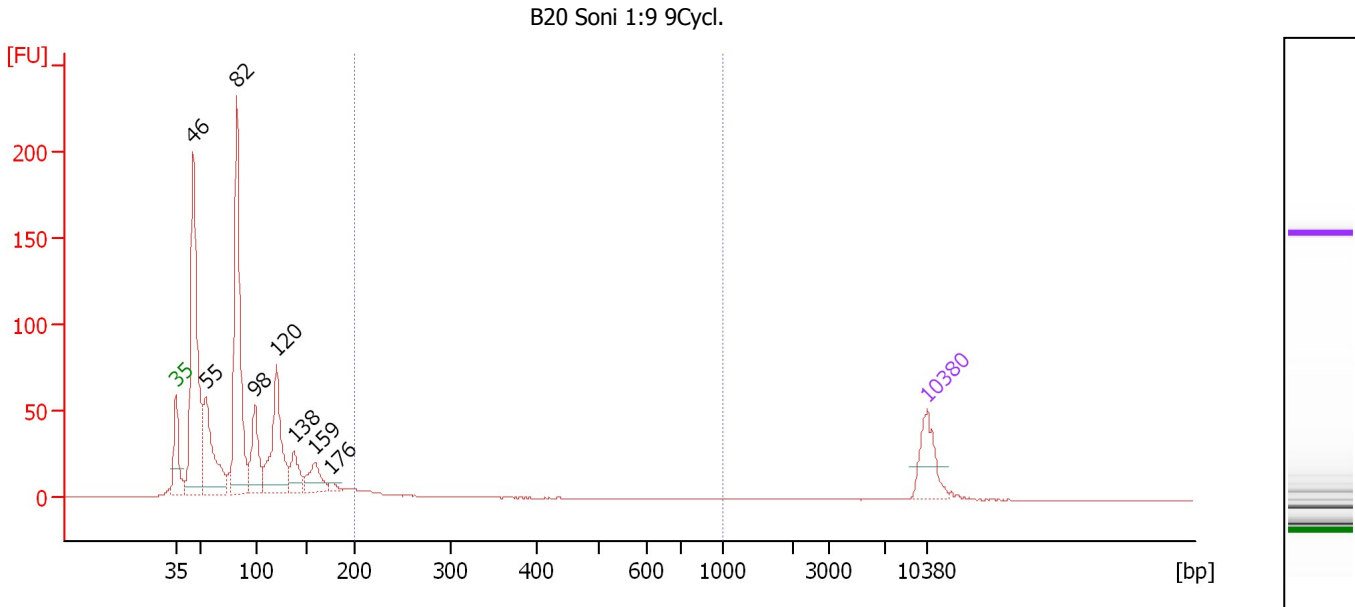
**Region table for sample 8 : C09 Soni 1:9 9Cycl.**

From [bp]	To [bp]	Average Size [bp]	Molarity [pmol/l]	Conc. [pg/μl]	Corr. Area	% of Total	Size distribution in CV [%]	Color
406	1,923	991	313.8	158.10	175.1	19	46.2	Blue

Assay Class: High Sensitivity DNA Assay  
 Data Path: C:\...ents and Settings\Bioanalyzer\2012-07-09\2012-07-09\_004.xad

Created: 7/9/2012 1:46:14 PM  
 Modified: 7/9/2012 2:29:28 PM

**Electropherogram Summary Continued ...**



**Overall Results for sample 9 : B20 Soni 1:9 9Cycl.**

Number of peaks found: 8                      Corr. Area 1: 39.5  
 Noise: 0.1

**Peak table for sample 9 : B20 Soni 1:9 9Cycl.**

Peak	Size [bp]	Conc. [pg/μl]	Molarity [pmol/l]	Observations
1	35	125.00	5,411.3	Lower Marker
2	46	711.14	23,436.7	
3	55	286.43	7,877.8	
4	82	623.34	11,491.2	
5	98	166.09	2,565.9	
6	120	301.65	3,824.6	
7	138	79.36	871.4	
8	159	83.39	793.2	
9	176	14.89	127.9	
10	10,380	75.00	10.9	Upper Marker

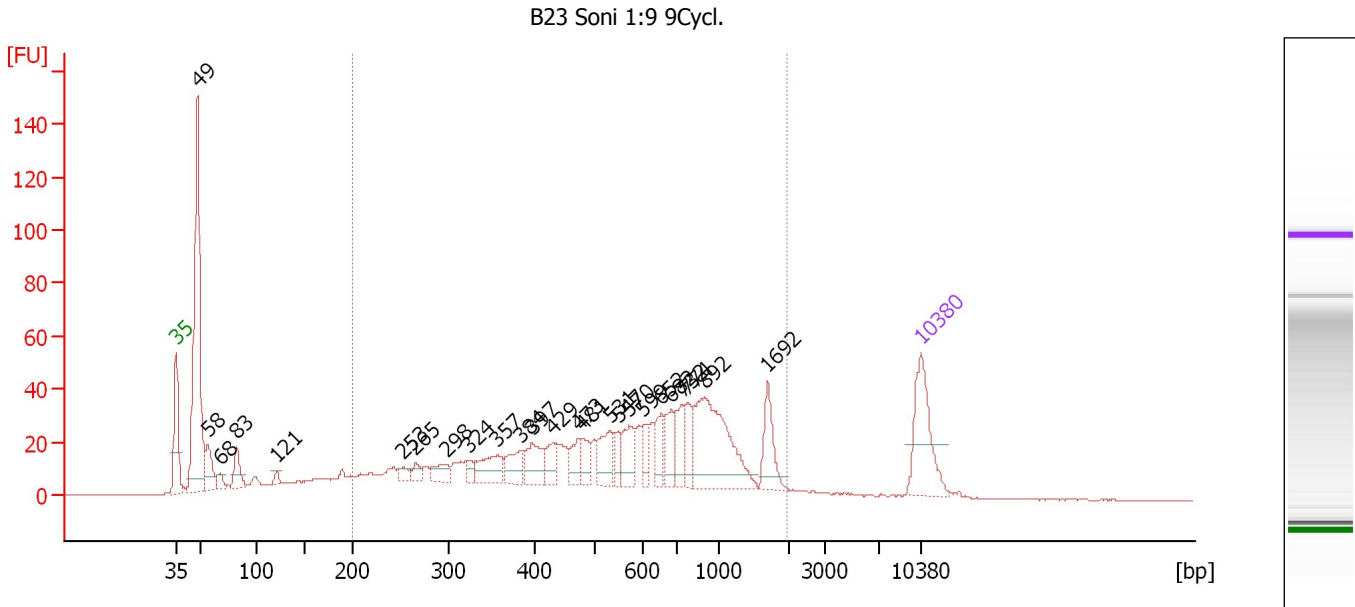
**Region table for sample 9 : B20 Soni 1:9 9Cycl.**

From [bp]	To [bp]	Average Size [bp]	Molarity [pmol/l]	Conc. [pg/μl]	Corr. Area	% of Total	Size distribution in CV [%]	Color
200	1,005	311	382.1	65.53	39.5	3	47.6	Blue

Assay Class: High Sensitivity DNA Assay  
 Data Path: C:\...ents and Settings\Bioanalyzer\2012-07-09\2012-07-09\_004.xad

Created: 7/9/2012 1:46:14 PM  
 Modified: 7/9/2012 2:29:28 PM

**Electropherogram Summary Continued ...**



**Overall Results for sample 10 : B23 Soni 1:9 9Cycl.**

Number of peaks found: 25                      Corr. Area 1: 965.2  
 Noise: 0.2

**Peak table for sample 10 : B23 Soni 1:9 9Cycl.**

Peak	Size [bp]	Conc. [pg/μl]	Molarity [pmol/l]	Observations
1	35	125.00	5,411.3	Lower Marker
2	49	410.79	12,772.0	
3	58	50.17	1,319.0	
4	68	15.50	345.4	
5	83	37.37	685.8	
6	121	8.63	108.3	
7	253	13.18	79.0	
8	265	12.81	73.2	
9	298	24.96	126.8	
10	324	12.48	58.3	
11	357	45.70	194.0	
12	384	33.54	132.5	
13	397	44.58	170.1	
14	429	27.47	96.9	
15	473	28.29	90.7	
16	481	23.42	73.8	
17	531	44.93	128.3	
18	547	19.49	54.0	
19	570	40.55	107.8	
20	599	21.00	53.1	
21	652	30.97	72.0	
22	682	35.40	78.7	
23	732	36.86	76.3	
24	774	29.28	57.3	
25	892	159.61	271.2	
26	1,692	40.50	36.3	

Assay Class: High Sensitivity DNA Assay  
Data Path: C:\...ents and Settings\Bioanalyzer\2012-07-09\2012-07-09\_004.xad

Created: 7/9/2012 1:46:14 PM  
Modified: 7/9/2012 2:29:28 PM

**Electropherogram Summary Continued ...****... Peak table for sample 10 : B23 Soni 1:9 9Cycl.**

Peak	Size [bp]	Conc. [pg/ $\mu$ l]	Molarity [pmol/l]	Observations
27	10,380	75.00	10.9	Upper Marker

**Region table for sample 10 : B23 Soni 1:9 9Cycl.**

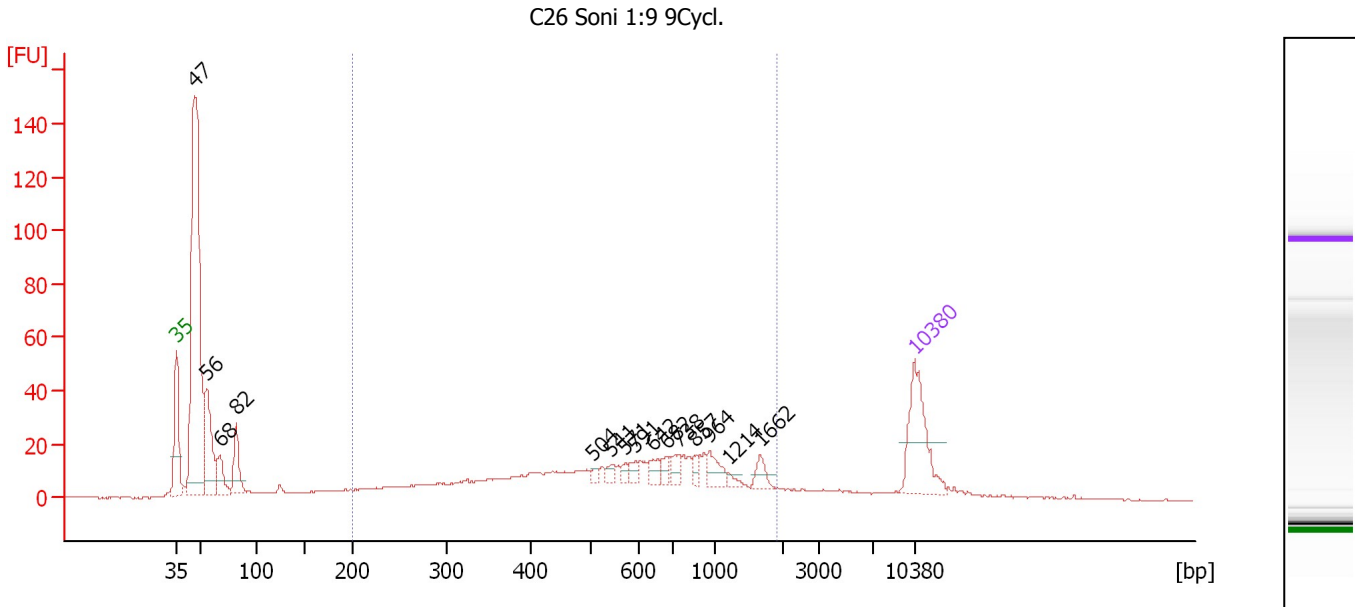
From [bp]	To [bp]	Average Size [bp]	Molarity [pmol/l]	Conc. [pg/ $\mu$ l]	Corr. Area	% of Total	Size distribution in CV [%]	Color
200	1,954	660	4,160.7	1,239.73	965.2	68	57.4	



Assay Class: High Sensitivity DNA Assay  
 Data Path: C:\...ents and Settings\Bioanalyzer\2012-07-09\2012-07-09\_004.xad

Created: 7/9/2012 1:46:14 PM  
 Modified: 7/9/2012 2:29:28 PM

**Electropherogram Summary Continued ...**



**Overall Results for sample 11 : C26 Soni 1:9 9Cycl.**

Number of peaks found: 15                      Corr. Area 1: 461.2  
 Noise: 0.1

**Peak table for sample 11 : C26 Soni 1:9 9Cycl.**

Peak	Size [bp]	Conc. [pg/μl]	Molarity [pmol/l]	Observations
1	35	125.00	5,411.3	Lower Marker
2	47	609.02	19,843.1	
3	56	130.74	3,536.1	
4	68	43.30	966.1	
5	82	54.71	1,009.0	
6	504	5.88	17.7	
7	541	8.84	24.8	
8	571	7.59	20.1	
9	591	9.47	24.3	
10	642	13.62	32.1	
11	682	9.83	21.8	
12	738	13.62	28.0	
13	857	9.23	16.3	
14	964	21.37	33.6	
15	1,214	5.18	6.5	
16	1,662	13.32	12.1	
17	10,380	75.00	10.9	Upper Marker

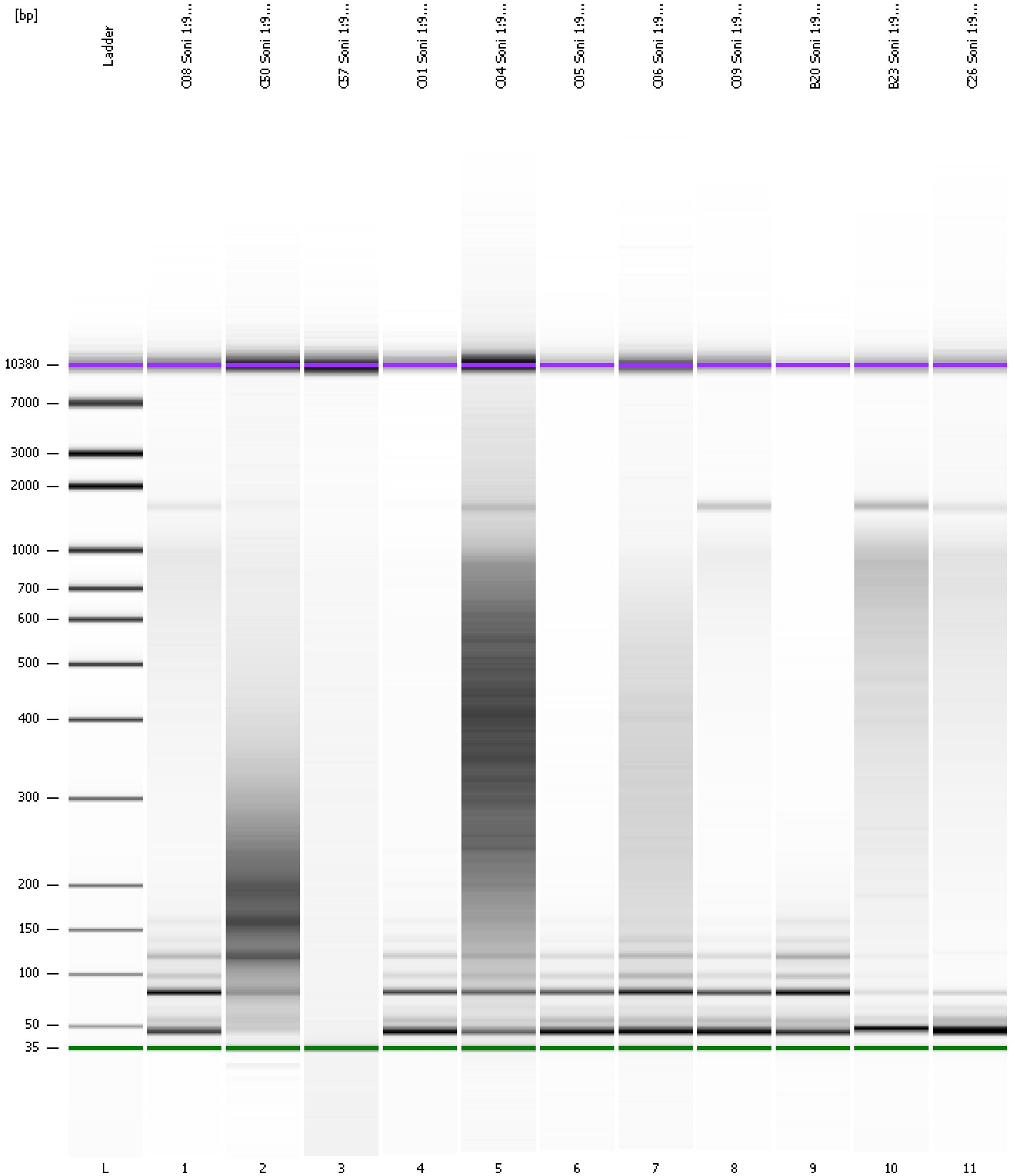
**Region table for sample 11 : C26 Soni 1:9 9Cycl.**

From [bp]	To [bp]	Average Size [bp]	Molarity [pmol/l]	Conc. [pg/μl]	Corr. Area	% of Total	Size distribution in CV [%]	Color
200	1,894	660	1,944.4	586.41	461.2	45	56.5	Blue

Assay Class: High Sensitivity DNA Assay  
Data Path: C:\...ents and Settings\Bioanalyzer\2012-07-09\2012-07-09\_004.xad

Created: 7/9/2012 1:46:14 PM  
Modified: 7/9/2012 2:29:28 PM

**Gel Image**



Assay Class: High Sensitivity DNA Assay  
 Data Path: C:\...ents and Settings\Bioanalyzer\2012-07-09\2012-07-09\_004.xad

Created: 7/9/2012 1:46:14 PM  
 Modified: 7/9/2012 2:29:28 PM

**Run Logbook**

Description	Number	Source	Category	Sub Category	Time	Time Zone	User	Host
Run ended on port 1 (Number of wells acquired: 12)		Instrument	Run		7/9/2012 2:27:33 PM	(GMT --07:00) Pacific Standard Time	UC Davis	D8XSMGH1
Run started on port 1 (File: C:\Documents and Settings\Bioanalyzer\2012-07-09\2012-07-09_004.xad)		Instrument	Run		7/9/2012 1:46:19 PM	(GMT --07:00) Pacific Standard Time	UC Davis	D8XSMGH1
Product Number : G2938B		Instrument	Run		7/9/2012 1:46:19 PM	(GMT --07:00) Pacific Standard Time	UC Davis	D8XSMGH1
Name :		Instrument	Run		7/9/2012 1:46:19 PM	(GMT --07:00) Pacific Standard Time	UC Davis	D8XSMGH1
Vendor : Agilent Technologies		Instrument	Run		7/9/2012 1:46:19 PM	(GMT --07:00) Pacific Standard Time	UC Davis	D8XSMGH1
Serial# : DE13701086		Instrument	Run		7/9/2012 1:46:19 PM	(GMT --07:00) Pacific Standard Time	UC Davis	D8XSMGH1
Firmware : C.01.069		Instrument	Run		7/9/2012 1:46:19 PM	(GMT --07:00) Pacific Standard Time	UC Davis	D8XSMGH1
Cartridge : Electrode		Instrument	Run		7/9/2012 1:46:19 PM	(GMT --07:00) Pacific Standard Time	UC Davis	D8XSMGH1