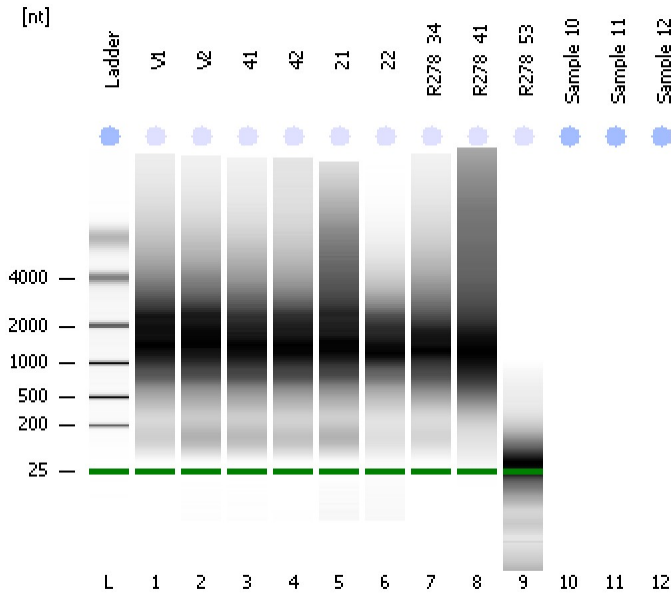


Assay Class: Eukaryote Total RNA Nano  
Data Path: C:\...ents and Settings\Bioanalyzer\2012-07-09\2012-07-09\_005.xad

Created: 7/9/2012 3:23:19 PM  
Modified: 7/9/2012 4:45:20 PM

Electrophoresis File Run Summary



Instrument Information:

Instrument Name: DE13701086      Firmware: C.01.069  
Serial#: DE13701086      Type: G2938B

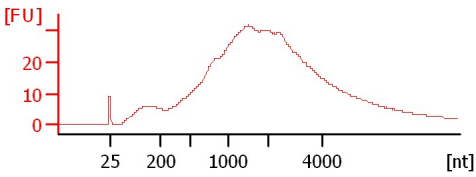
Assay Information:

Assay Origin Path: C:\Program Files\Agilent\2100 bioanalyzer\2100 expert\assays\RNA\Eukaryote Total RNA Nano Series II.xsy  
Assay Class: Eukaryote Total RNA Nano  
Version: 2.6  
Assay Comments: Total RNA Analysis ng sensitivity (Eukaryote)  
© Copyright 2003 - 2009 Agilent Technologies, Inc.

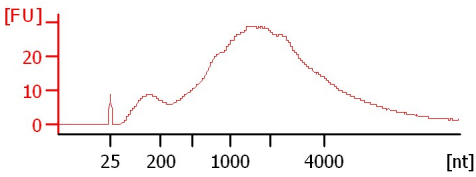
Chip Information:

Chip Lot #:   
Reagent Kit Lot #:   
Chip Comments:

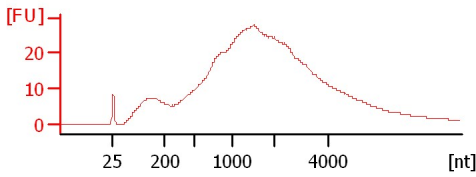
**V1**  
RIN: 3.10



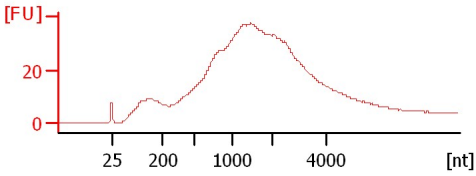
**V2**  
RIN: 2.70



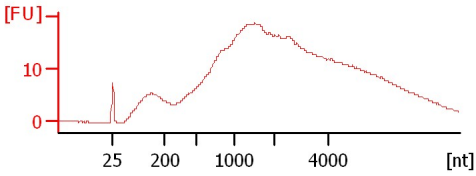
**41**  
RIN: 3.30



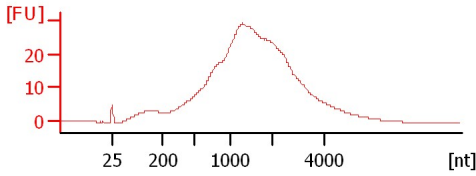
**42**  
RIN: 2.30



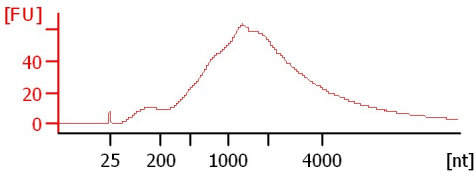
**21**  
RIN: 3.60



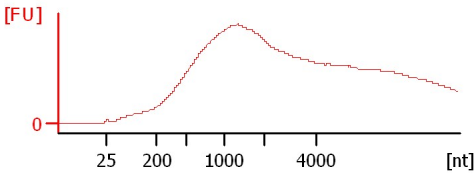
**22**  
RIN: 2.60



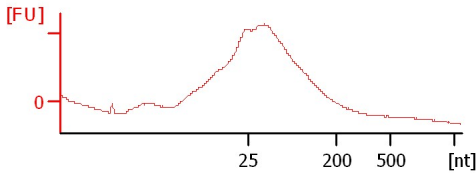
**R278\_34**  
RIN: 5.70



**R278\_41**  
RIN: 10



**R278\_53**  
RIN: 2.50



Assay Class: Eukaryote Total RNA Nano  
 Data Path: C:\...ents and Settings\Bioanalyzer\2012-07-09\2012-07-09\_005.xad

Created: 7/9/2012 3:23:19 PM  
 Modified: 7/9/2012 4:45:20 PM

**Electrophoresis File Run Summary (Chip Summary)**

Sample Name	Sample Comment	Status	Result Label	Result Color
V1		✓	RIN: 3.10	
V2		✓	RIN: 2.70	
41		✓	RIN: 3.30	
42		✓	RIN: 2.30	
21		✓	RIN: 3.60	
22		✓	RIN: 2.60	
R278_34		✓	RIN: 5.70	
R278_41		✓	RIN:10	
R278_53		✓	RIN: 2.50	
Sample 10				
Sample 11				
Sample 12				
Ladder		✓	All Other Samples	

**Chip Lot #**

**Reagent Kit Lot #**

**Chip Comments :**

Assay Class: Eukaryote Total RNA Nano  
Data Path: C:\...ents and Settings\Bioanalyzer\2012-07-09\2012-07-09\_005.xad

Created: 7/9/2012 3:23:19 PM  
Modified: 7/9/2012 4:45:20 PM

**Electrophoresis Assay Details**

**General Analysis Settings**

Number of Available Sample and Ladder Wells (Max.) : 13  
Minimum Visible Range [s] : 17  
Maximum Visible Range [s] : 70  
Start Analysis Time Range [s] : 19  
End Analysis Time Range [s] : 69  
Ladder Concentration [ng/μl] : 150  
Lower Marker Concentration [ng/μl] : 0  
Upper Marker Concentration [ng/μl] : 0  
Used Lower Marker for Quantitation  
Standard Curve Fit is Logarithmic  
Show Data Aligned to Lower Marker

**Integrator Settings**

Integration Start Time [s] : 19  
Integration End Time [s] : 69  
Slope Threshold : 0.6  
Height Threshold [FU] : 0.5  
Area Threshold : 0.2  
Width Threshold [s] : 0.5  
Baseline Plateau [s] : 6

**Filter Settings**

Filter Width [s] : 0.5  
Polynomial Order : 4

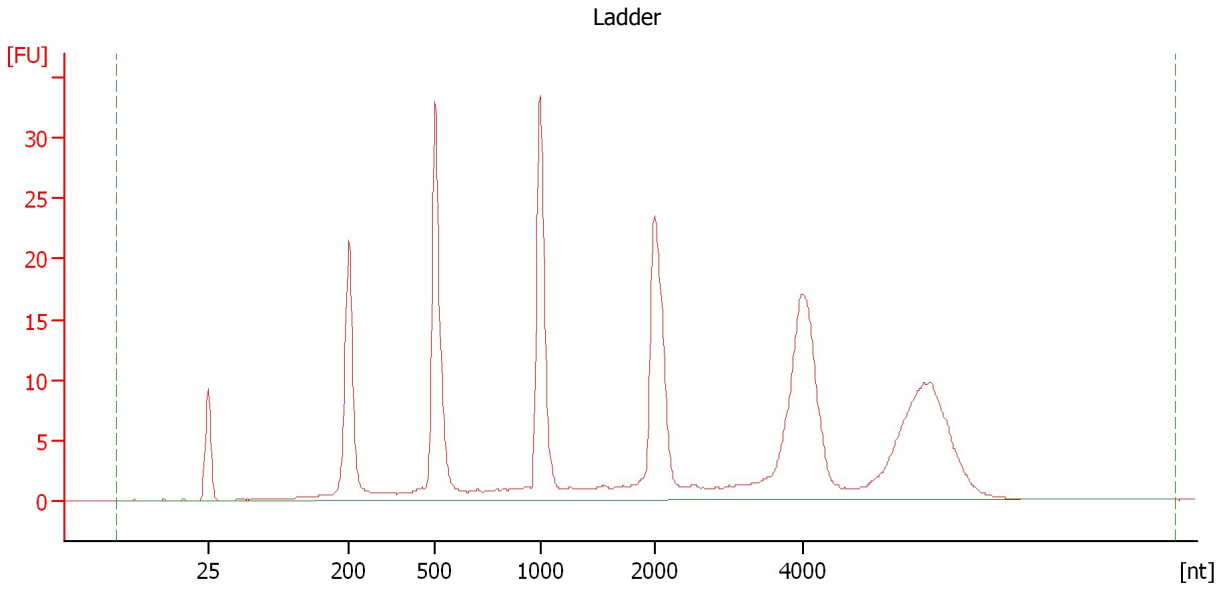
**Ladder**

Ladder Peak	Size
1	25
2	200
3	500
4	1000
5	2000
6	4000

Assay Class: Eukaryote Total RNA Nano  
Data Path: C:\...ents and Settings\Bioanalyzer\2012-07-09\2012-07-09\_005.xad

Created: 7/9/2012 3:23:19 PM  
Modified: 7/9/2012 4:45:20 PM

**Electropherogram Summary**



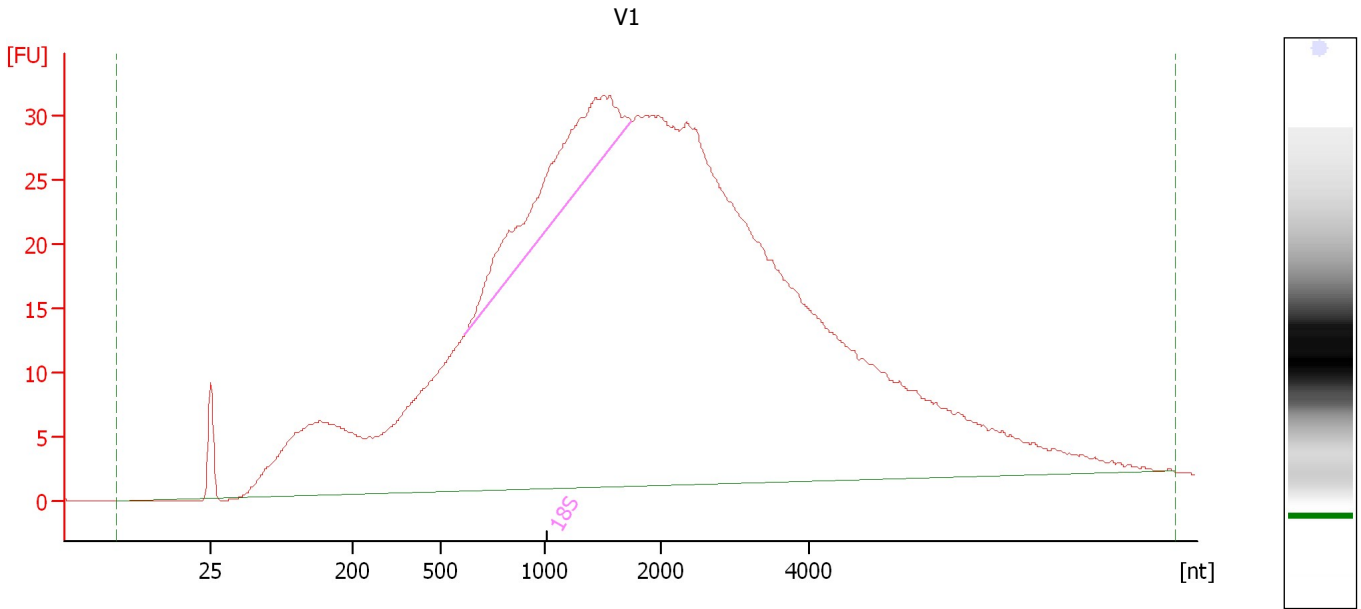
**Overall Results for Ladder**

RNA Area:	286.5	Result Flagging Color:	<span style="background-color: #add8e6; border: 1px solid black; display: inline-block; width: 20px; height: 10px;"></span>
RNA Concentration:	150 ng/μl	Result Flagging Label:	All Other Samples

Assay Class: Eukaryote Total RNA Nano  
Data Path: C:\...ents and Settings\Bioanalyzer\2012-07-09\2012-07-09\_005.xad

Created: 7/9/2012 3:23:19 PM  
Modified: 7/9/2012 4:45:20 PM

**Electropherogram Summary Continued ...**



**Overall Results for sample 1 : V1**

RNA Area:	1,190.0	RNA Integrity Number (RIN):	3.1 (B.02.08)
RNA Concentration:	623 ng/μl	Result Flagging Color:	<span style="background-color: #ccccff; border: 1px solid black; display: inline-block; width: 20px; height: 10px;"></span>
rRNA Ratio [28s / 18s]:	0.0	Result Flagging Label:	RIN: 3.10

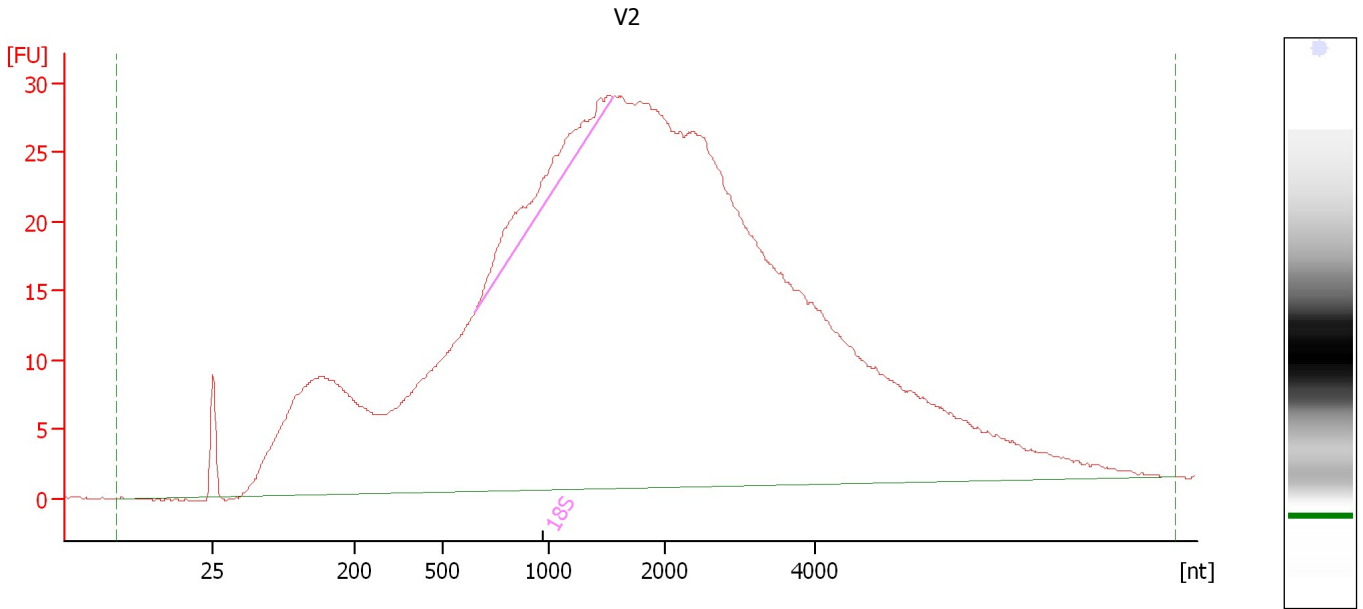
**Fragment table for sample 1 : V1**

Name	Start Size [nt]	End Size [nt]	Area	% of total Area
18S	619	1,743	66.0	5.5

Assay Class: Eukaryote Total RNA Nano  
Data Path: C:\...ents and Settings\Bioanalyzer\2012-07-09\2012-07-09\_005.xad

Created: 7/9/2012 3:23:19 PM  
Modified: 7/9/2012 4:45:20 PM

**Electropherogram Summary Continued ...**



**Overall Results for sample 2 : V2**

RNA Area:	1,167.4	RNA Integrity Number (RIN):	2.7 (B.02.08)
RNA Concentration:	611 ng/μl	Result Flagging Color:	<span style="background-color: #ccccff; border: 1px solid black; display: inline-block; width: 20px; height: 10px;"></span>
rRNA Ratio [28s / 18s]:	0.0	Result Flagging Label:	RIN: 2.70

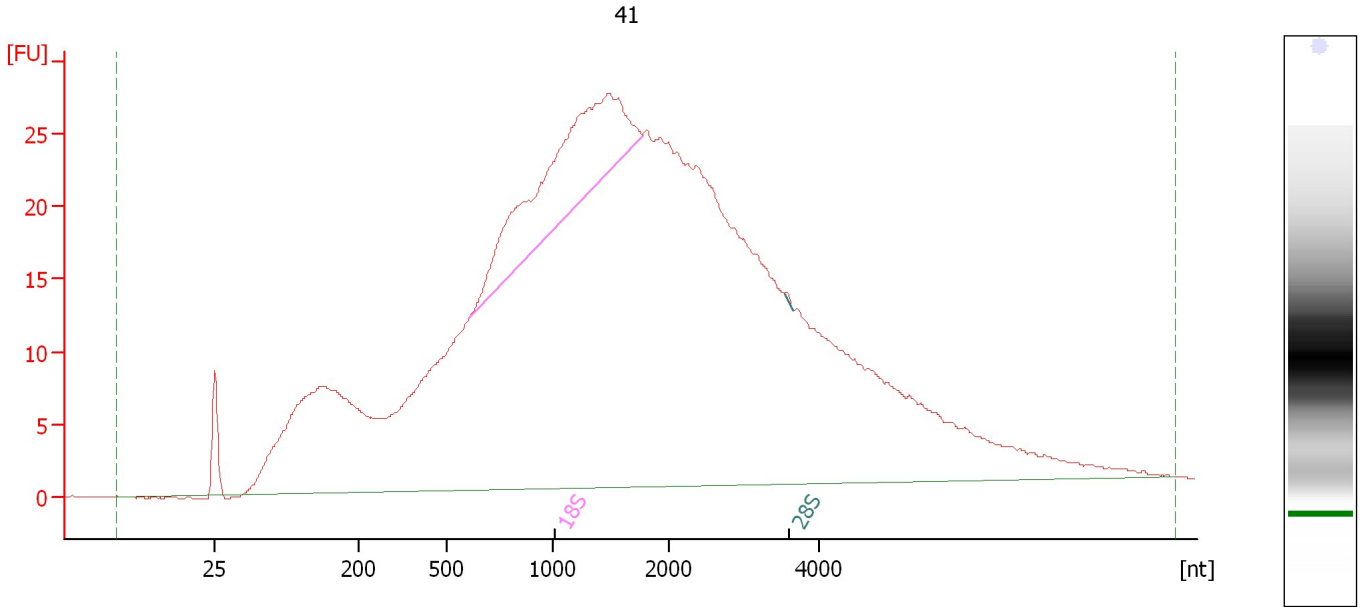
**Fragment table for sample 2 : V2**

Name	Start Size [nt]	End Size [nt]	Area	% of total Area
18S	650	1,561	27.9	2.4

Assay Class: Eukaryote Total RNA Nano  
Data Path: C:\...ents and Settings\Bioanalyzer\2012-07-09\2012-07-09\_005.xad

Created: 7/9/2012 3:23:19 PM  
Modified: 7/9/2012 4:45:20 PM

**Electropherogram Summary Continued ...**



**Overall Results for sample 3 : 41**

RNA Area:	1,055.1	RNA Integrity Number (RIN):	3.3 (B.02.08)
RNA Concentration:	552 ng/μl	Result Flagging Color:	<span style="background-color: #ccccff; border: 1px solid black; display: inline-block; width: 20px; height: 10px;"></span>
rRNA Ratio [28s / 18s]:	0.0	Result Flagging Label:	RIN: 3.30

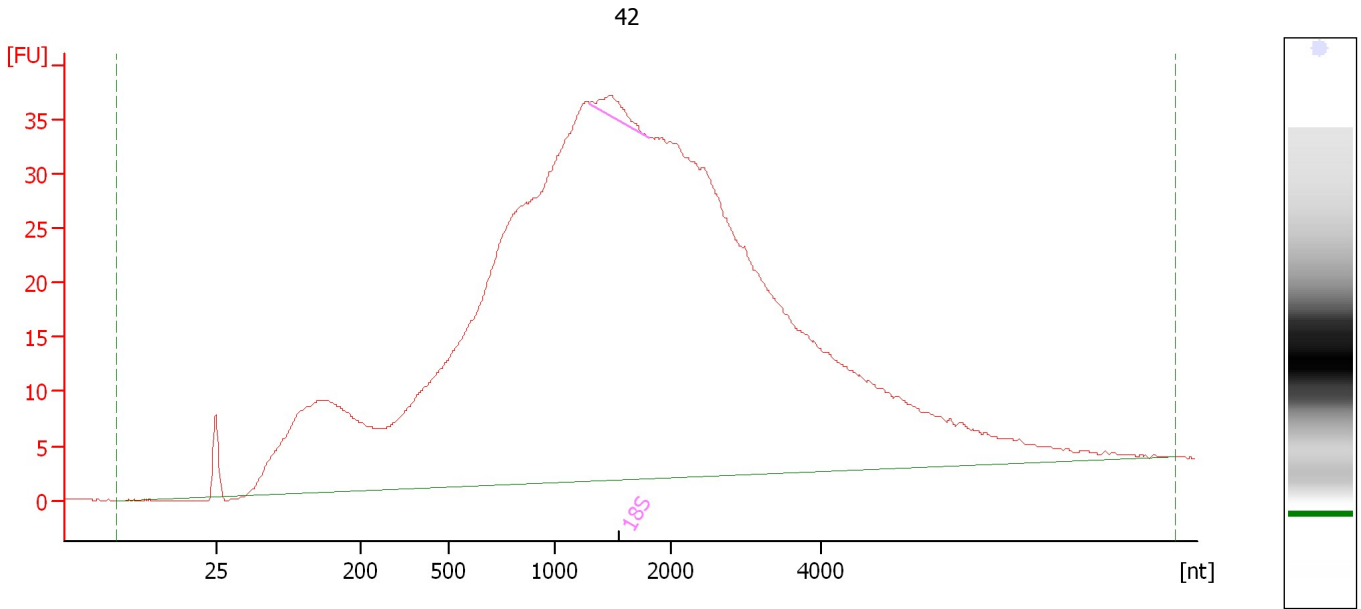
**Fragment table for sample 3 : 41**

Name	Start Size [nt]	End Size [nt]	Area	% of total Area
18S	609	1,777	76.4	7.2
28S	3,543	3,642	0.2	0.0

Assay Class: Eukaryote Total RNA Nano  
Data Path: C:\...ents and Settings\Bioanalyzer\2012-07-09\2012-07-09\_005.xad

Created: 7/9/2012 3:23:19 PM  
Modified: 7/9/2012 4:45:20 PM

**Electropherogram Summary Continued ...**



**Overall Results for sample 4 : 42**

RNA Area:	1,311.0	RNA Integrity Number (RIN):	2.3 (B.02.08, Anomaly Threshold(s) manually adapted)
RNA Concentration:	686 ng/μl	Result Flagging Color:	<span style="background-color: #ccccff; border: 1px solid black; display: inline-block; width: 20px; height: 10px;"></span>
rRNA Ratio [28s / 18s]:	0.0	Result Flagging Label:	RIN: 2.30

**Fragment table for sample 4 : 42**

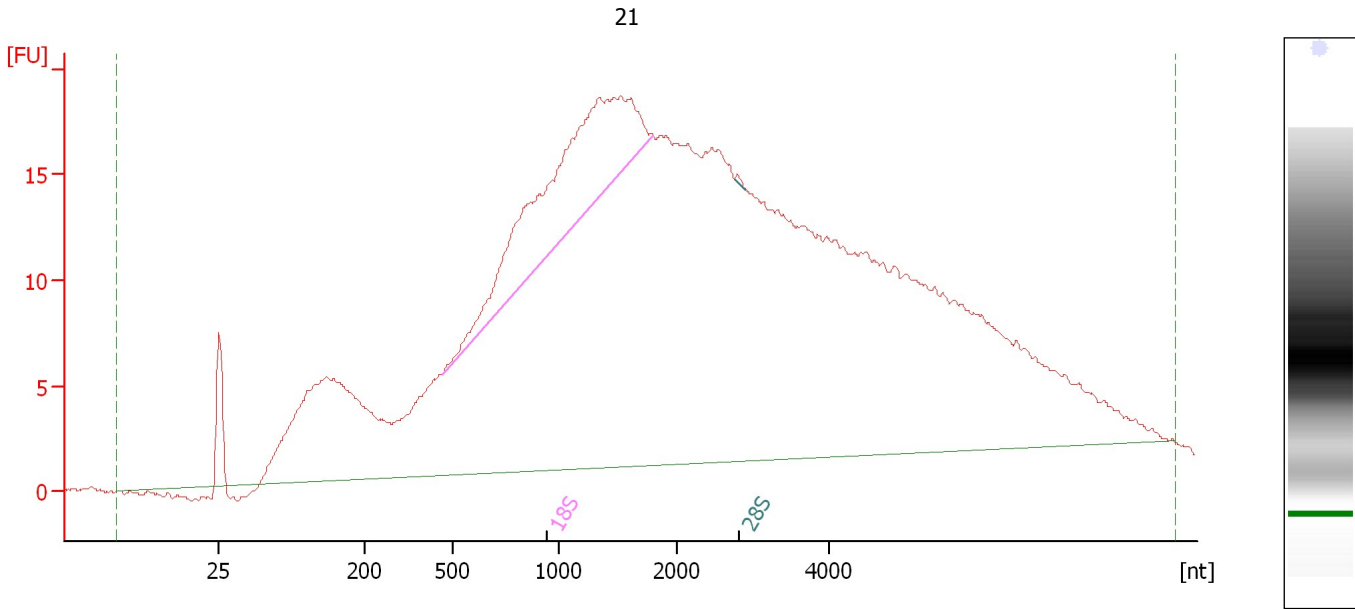
Name	Start Size [nt]	End Size [nt]	Area	% of total Area
18S	1,301	1,806	5.6	0.4



Assay Class: Eukaryote Total RNA Nano  
 Data Path: C:\...ents and Settings\Bioanalyzer\2012-07-09\2012-07-09\_005.xad

Created: 7/9/2012 3:23:19 PM  
 Modified: 7/9/2012 4:45:20 PM

**Electropherogram Summary Continued ...**



**Overall Results for sample 5 : 21**

RNA Area:	778.8	RNA Integrity Number (RIN):	3.6 (B.02.08, Anomaly Threshold(s) manually adapted)
RNA Concentration:	408 ng/μl	Result Flagging Color:	<span style="background-color: #ccccff; border: 1px solid black; display: inline-block; width: 20px; height: 10px;"></span>
rRNA Ratio [28s / 18s]:	0.0	Result Flagging Label:	RIN: 3.60

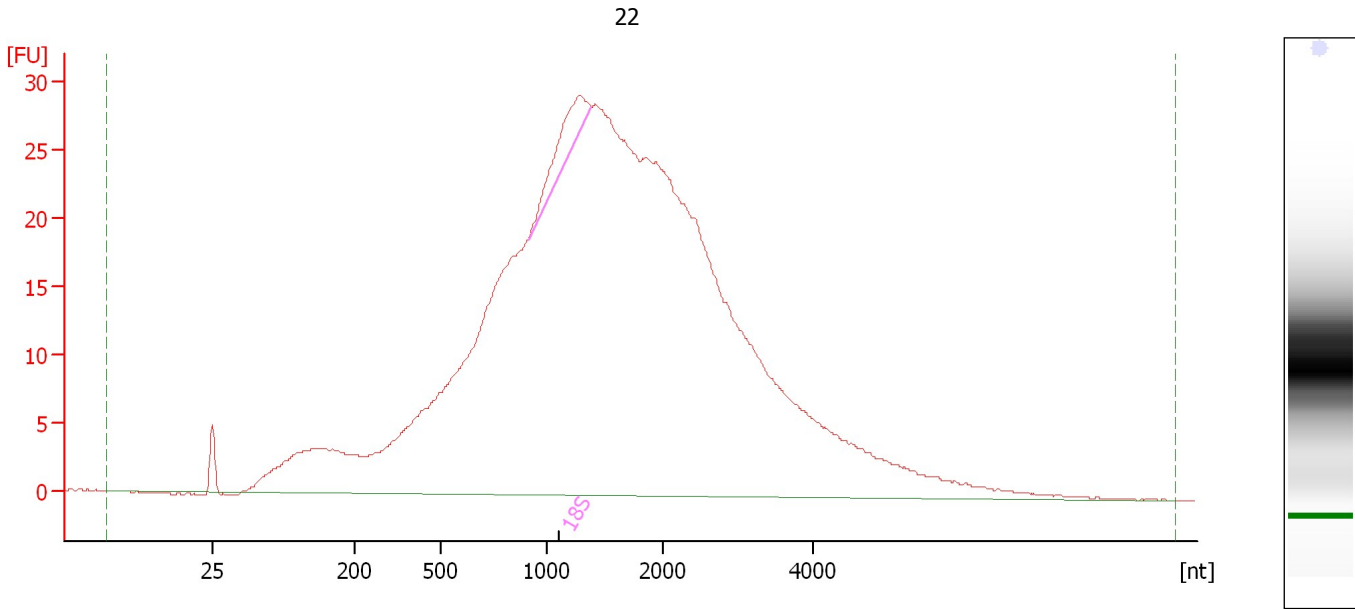
**Fragment table for sample 5 : 21**

Name	Start Size [nt]	End Size [nt]	Area	% of total Area
18S	467	1,801	62.5	8.0
28S	2,763	2,890	0.2	0.0

Assay Class: Eukaryote Total RNA Nano  
Data Path: C:\...ents and Settings\Bioanalyzer\2012-07-09\2012-07-09\_005.xad

Created: 7/9/2012 3:23:19 PM  
Modified: 7/9/2012 4:45:20 PM

**Electropherogram Summary Continued ...**



**Setpoint Deviations for sample 6 : 22**

Width Threshold [s] : 0.01

**Overall Results for sample 6 : 22**

RNA Area:	872.9	RNA Integrity Number (RIN):	2.6 (B.02.08)
RNA Concentration:	457 ng/μl	Result Flagging Color:	<span style="background-color: #ccccff; border: 1px solid black; display: inline-block; width: 20px; height: 10px;"></span>
rRNA Ratio [28s / 18s]:	0.0	Result Flagging Label:	RIN: 2.60

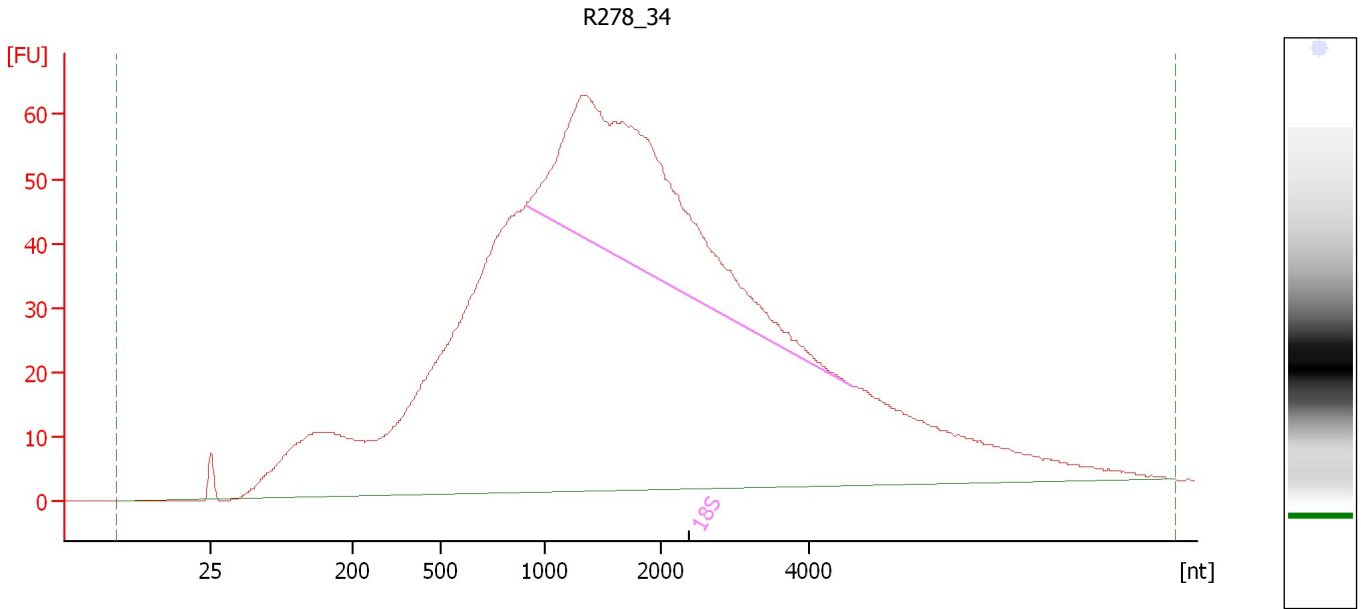
**Fragment table for sample 6 : 22**

Name	Start Size [nt]	End Size [nt]	Area	% of total Area
18S	910	1,383	13.6	1.6

Assay Class: Eukaryote Total RNA Nano  
Data Path: C:\...ents and Settings\Bioanalyzer\2012-07-09\2012-07-09\_005.xad

Created: 7/9/2012 3:23:19 PM  
Modified: 7/9/2012 4:45:20 PM

**Electropherogram Summary Continued ...**



**Overall Results for sample 7 : R278\_34**

RNA Area:	2,182.0	RNA Integrity Number (RIN):	5.7 (B.02.08)
RNA Concentration:	1,143 ng/μl	Result Flagging Color:	<span style="background-color: #ccccff; border: 1px solid black; display: inline-block; width: 20px; height: 10px;"></span>
rRNA Ratio [28s / 18s]:	0.0	Result Flagging Label:	RIN: 5.70

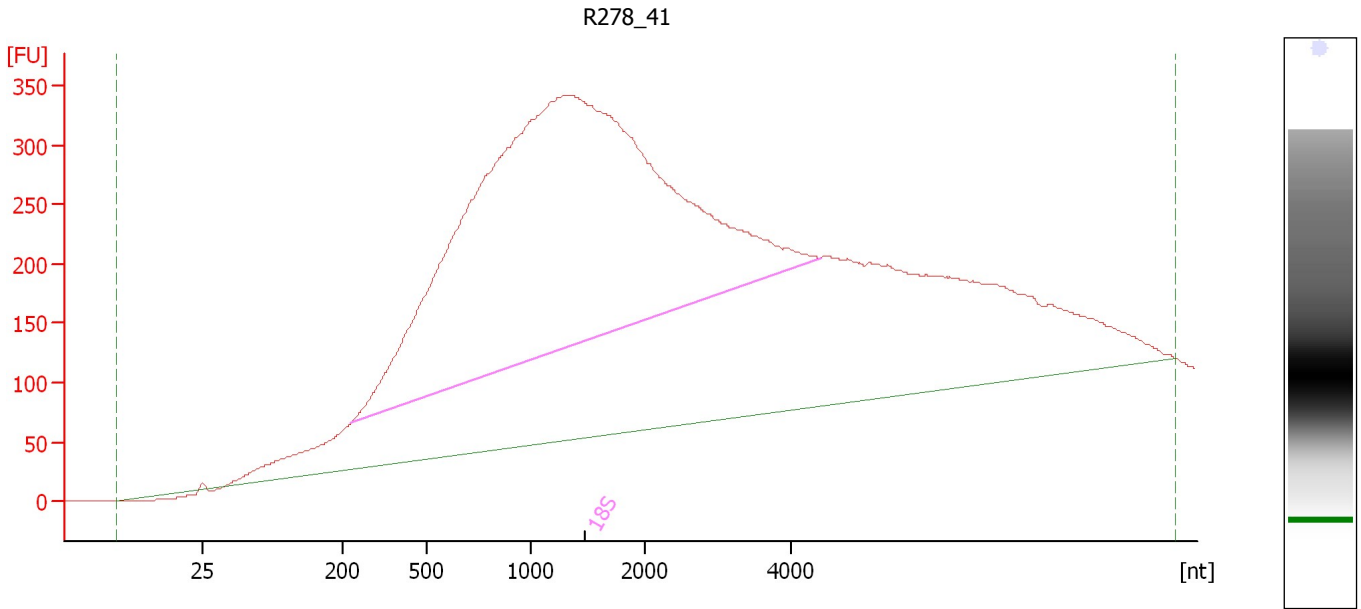
**Fragment table for sample 7 : R278\_34**

Name	Start Size [nt]	End Size [nt]	Area	% of total Area
18S	908	4,564	354.0	16.2

Assay Class: Eukaryote Total RNA Nano  
 Data Path: C:\...ents and Settings\Bioanalyzer\2012-07-09\2012-07-09\_005.xad

Created: 7/9/2012 3:23:19 PM  
 Modified: 7/9/2012 4:45:20 PM

**Electropherogram Summary Continued ...**



**Overall Results for sample 8 : R278\_41**

RNA Area:	12,592.9	RNA Integrity Number (RIN):	10 (B.02.08, Anomaly Threshold(s) manually adapted)
RNA Concentration:	6,594 ng/μl	Result Flagging Color:	<span style="background-color: #ccccff; border: 1px solid black; display: inline-block; width: 20px; height: 10px;"></span>
rRNA Ratio [28s / 18s]:	0.0	Result Flagging Label:	RIN:10

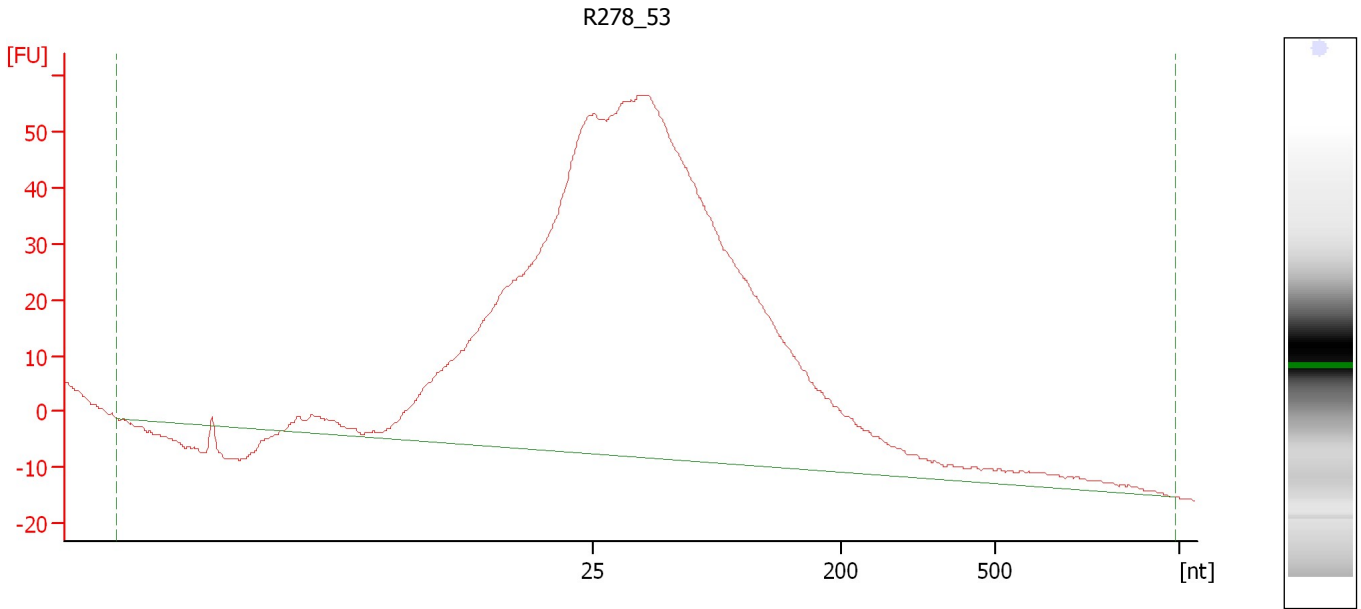
**Fragment table for sample 8 : R278\_41**

Name	Start Size [nt]	End Size [nt]	Area	% of total Area
18S	233	4,390	5,865.8	46.6

Assay Class: Eukaryote Total RNA Nano  
Data Path: C:\...ents and Settings\Bioanalyzer\2012-07-09\2012-07-09\_005.xad

Created: 7/9/2012 3:23:19 PM  
Modified: 7/9/2012 4:45:20 PM


**Electropherogram Summary Continued ...**



**Setpoint Deviations for sample 9 : R278\_53**

Width Threshold [s] : 0.01

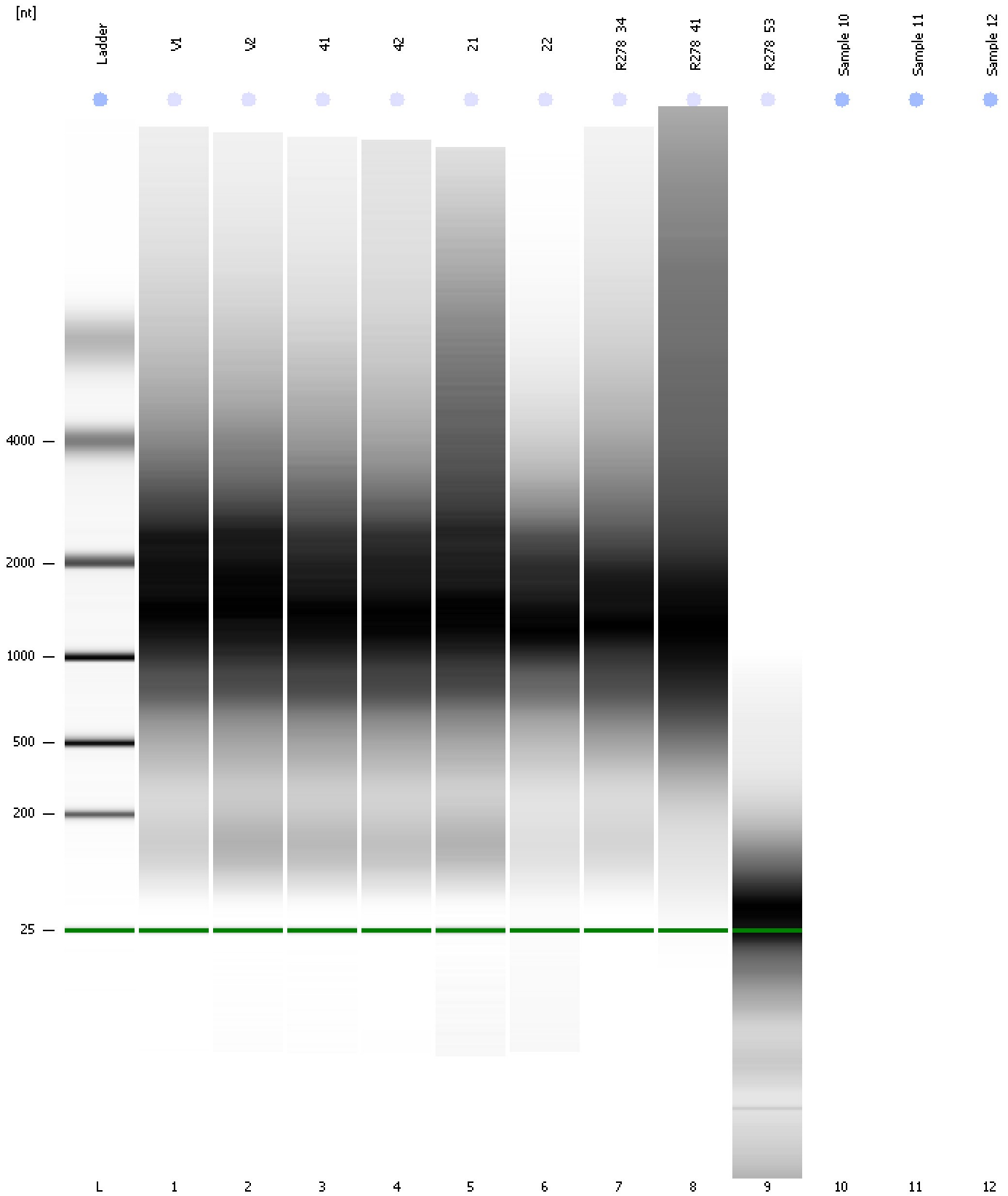
**Overall Results for sample 9 : R278\_53**

RNA Area:	1,294.3	RNA Integrity Number (RIN):	2.5 (B.02.08, Anomaly Threshold(s) manually adapted)
RNA Concentration:	678 ng/μl	Result Flagging Color:	
rRNA Ratio [28s / 18s]:	0.0	Result Flagging Label:	RIN: 2.50

Assay Class: Eukaryote Total RNA Nano  
Data Path: C:\...ents and Settings\Bioanalyzer\2012-07-09\2012-07-09\_005.xad

Created: 7/9/2012 3:23:19 PM  
Modified: 7/9/2012 4:45:20 PM

**Gel Image**



Assay Class: Eukaryote Total RNA Nano  
Data Path: C:\...ents and Settings\Bioanalyzer\2012-07-09\2012-07-09\_005.xad

Created: 7/9/2012 3:23:19 PM  
Modified: 7/9/2012 4:45:20 PM

**Invalid Samples**

Sample 10 has not been run, no results available.

Sample 11 has not been run, no results available.

Sample 12 has not been run, no results available.

Assay Class: Eukaryote Total RNA Nano Created: 7/9/2012 3:23:19 PM  
 Data Path: C:\...ents and Settings\Bioanalyzer\2012-07-09\2012-07-09\_005.xad Modified: 7/9/2012 4:45:20 PM

**Run Logbook**

Description	Number	Source	Category	Sub Category	Time	Time Zone	User	Host
Run ended on port 1 (Number of wells acquired: 10)		Instrument	Run		7/9/2012 3:43:04 PM	(GMT --07:00) Pacific Standard Time	UC Davis	D8XSMGH1
Run started on port 1 (File: C:\Documents and Settings\Bioanalyzer\2012-07-09\2012-07-09_005.xad)		Instrument	Run		7/9/2012 3:23:24 PM	(GMT --07:00) Pacific Standard Time	UC Davis	D8XSMGH1
Product Number : G2938B		Instrument	Run		7/9/2012 3:23:24 PM	(GMT --07:00) Pacific Standard Time	UC Davis	D8XSMGH1
Name :		Instrument	Run		7/9/2012 3:23:24 PM	(GMT --07:00) Pacific Standard Time	UC Davis	D8XSMGH1
Vendor : Agilent Technologies		Instrument	Run		7/9/2012 3:23:24 PM	(GMT --07:00) Pacific Standard Time	UC Davis	D8XSMGH1
Serial# : DE13701086		Instrument	Run		7/9/2012 3:23:24 PM	(GMT --07:00) Pacific Standard Time	UC Davis	D8XSMGH1
Firmware : C.01.069		Instrument	Run		7/9/2012 3:23:24 PM	(GMT --07:00) Pacific Standard Time	UC Davis	D8XSMGH1
Cartridge : Electrode		Instrument	Run		7/9/2012 3:23:24 PM	(GMT --07:00) Pacific Standard Time	UC Davis	D8XSMGH1