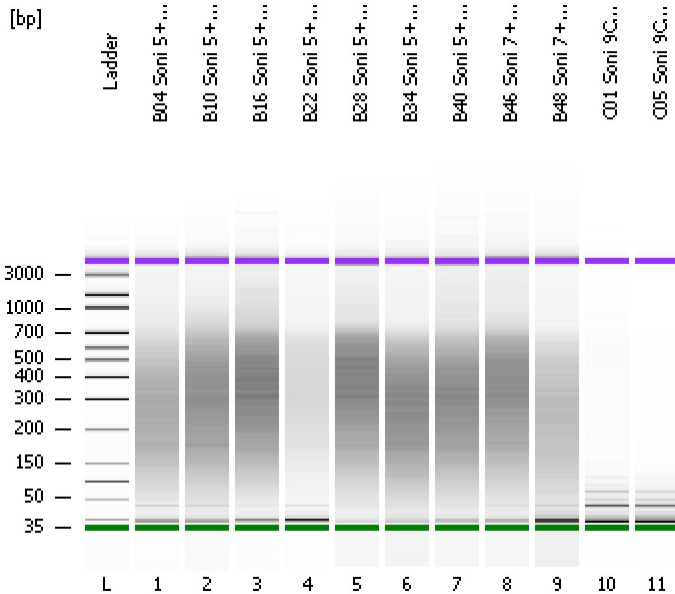


Assay Class: High Sensitivity DNA Assay  
Data Path: C:\...ents and Settings\Bioanalyzer\2012-07-09\2012-07-09\_006.xad

Created: 7/9/2012 4:27:24 PM  
Modified: 7/9/2012 5:08:47 PM

**Electrophoresis File Run Summary**



Instrument Information:

Instrument Name: DE13701086      Firmware: C.01.069  
Serial#: DE13701086      Type: G2938B

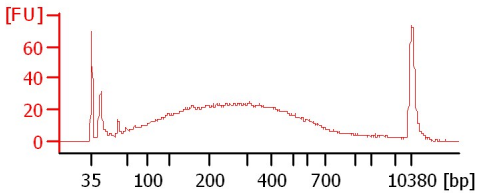
Assay Information:

Assay Origin Path: C:\Program Files\Agilent\2100 bioanalyzer\2100 expert\assays\dsDNA\High Sensitivity DNA.xsy  
Assay Class: High Sensitivity DNA Assay  
Version: 1.03  
Assay Comments: Copyright © 2003-2010 Agilent Technologies

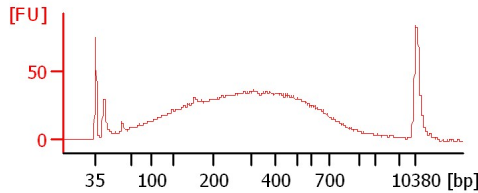
Chip Information:

Chip Lot #:   
Reagent Kit Lot #:   
Chip Comments:

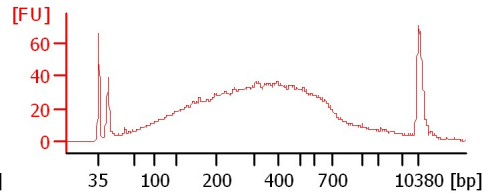
**B04 Soni 5+3+2Cycles 1:8**



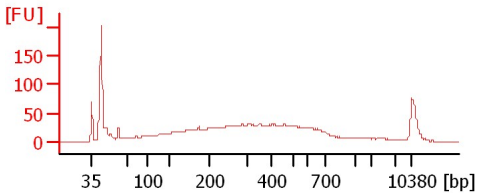
**B10 Soni 5+3+2Cycles 1:8**



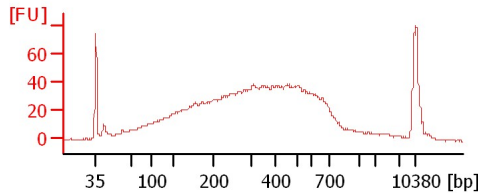
**B16 Soni 5+3+3Cycles 1:8**



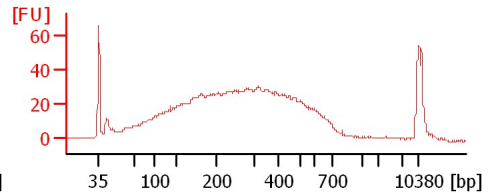
**B22 Soni 5+3+3Cycles 1:7**



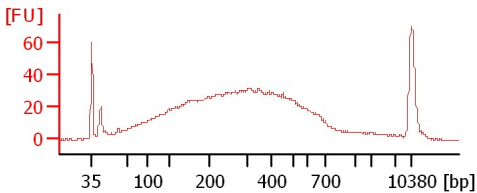
**B28 Soni 5+3+3Cycles 1:8**



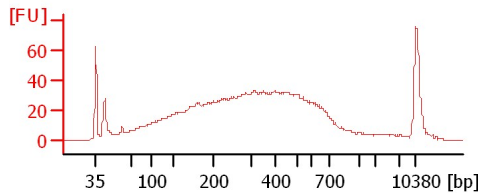
**B34 Soni 5+3+2Cycles 1:8**



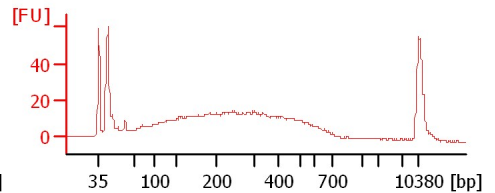
**B40 Soni 5+3+3Cycles 1:8**



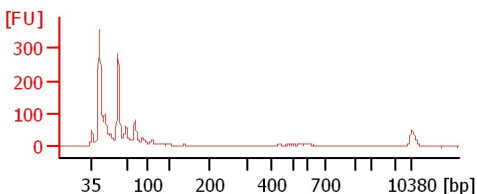
**B46 Soni 7+4Cycles**



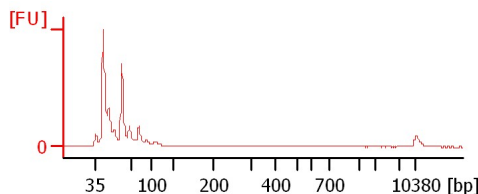
**B48 Soni 7+2Cycles**



**C01 Soni 9Cycles 1:2**



**C05 Soni 9Cycles 1:2**



Assay Class: High Sensitivity DNA Assay  
Data Path: C:\...ents and Settings\Bioanalyzer\2012-07-09\2012-07-09\_006.xad

Created: 7/9/2012 4:27:24 PM  
Modified: 7/9/2012 5:08:47 PM

**Electrophoresis File Run Summary (Chip Summary)**

Sample Name	Sample Comment	Rest. Digest	Status	Observation	Result Label	Result Color
B04 Soni 5+3+2Cycles 1:8		<input type="checkbox"/>	✓			
B10 Soni 5+3+2Cycles 1:8		<input type="checkbox"/>	✓			
B16 Soni 5+3+3Cycles 1:8		<input type="checkbox"/>	✓			
B22 Soni 5+3+3Cycles 1:7		<input type="checkbox"/>	✓			
B28 Soni 5+3+3Cycles 1:8		<input type="checkbox"/>	✓			
B34 Soni 5+3+2Cycles 1:8		<input type="checkbox"/>	✓			
B40 Soni 5+3+3Cycles 1:8		<input type="checkbox"/>	✓			
B46 Soni 7+4Cycles		<input type="checkbox"/>	✓			
B48 Soni 7+2Cycles		<input type="checkbox"/>	✓			
C01 Soni 9Cycles 1:2		<input type="checkbox"/>	✓			
C05 Soni 9Cycles 1:2		<input type="checkbox"/>	✓			
Ladder		<input type="checkbox"/>	✓			

**Chip Lot #**

**Reagent Kit Lot #**

**Chip Comments :**

Assay Class: High Sensitivity DNA Assay  
Data Path: C:\...ents and Settings\Bioanalyzer\2012-07-09\2012-07-09\_006.xad

Created: 7/9/2012 4:27:24 PM  
Modified: 7/9/2012 5:08:47 PM

## Electrophoresis Assay Details

### General Analysis Settings

Number of Available Sample and Ladder Wells (Max.) : 12  
Minimum Visible Range [s] : 32  
Maximum Visible Range [s] : 138  
Start Analysis Time Range [s] : 33  
End Analysis Time Range [s] : 137.5  
Ladder Concentration [pg/ $\mu$ l] : 1950  
Uses Standard Area for Ladder Fragments  
Lower Marker Concentration [pg/ $\mu$ l] : 125  
Upper Marker Concentration [pg/ $\mu$ l] : 75  
Used Upper Marker for Quantitation  
Standard Curve Fit is Point to Point  
Show Data Aligned to Lower and Upper Marker

### Integrator Settings

Integration Start Time [s] : 33.05  
Integration End Time [s] : 137  
Slope Threshold : 0.8  
Height Threshold [FU] : 5  
Area Threshold : 0.1  
Width Threshold [s] : 0.6  
Baseline Plateau [s] : 0.5

### Filter Settings

Filter Width [s] : 0.5  
Polynomial Order : 4

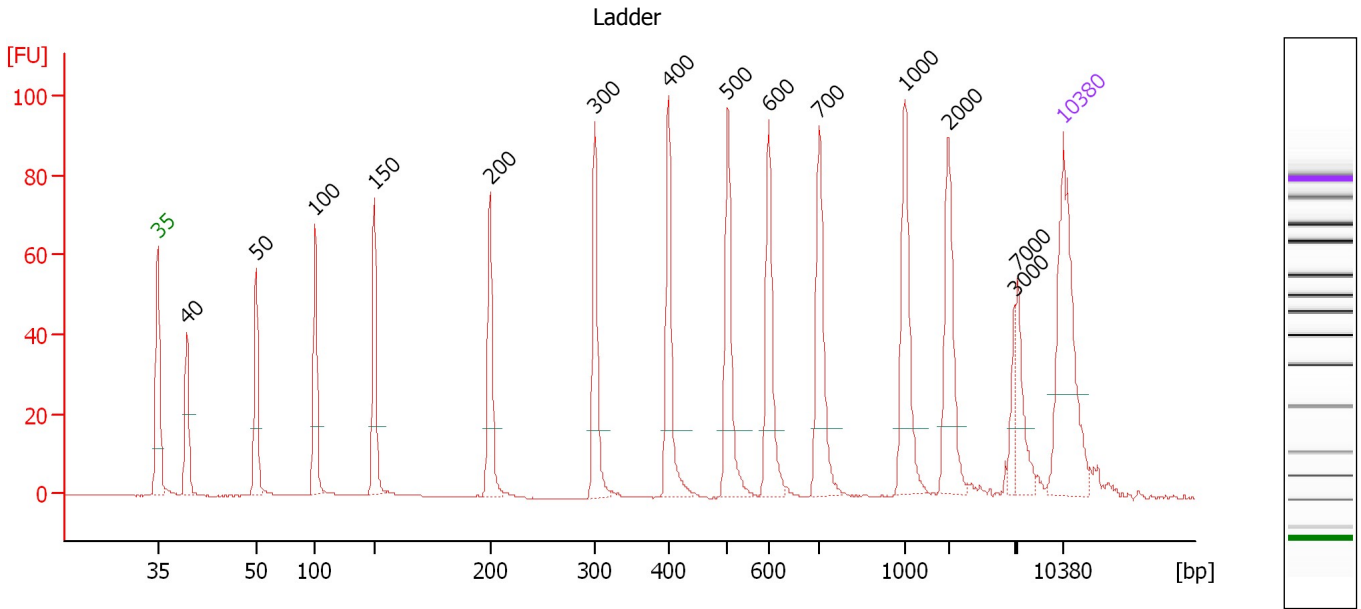
### Ladder

Ladder Peak	Size	Area
1	35	160
2	50	210
3	100	208
4	150	221
5	200	242
6	300	270
7	400	305
8	500	306
9	600	336
10	700	321
11	1000	366
12	2000	413
13	3000	411
14	7000	400
15	10380	214

Assay Class: High Sensitivity DNA Assay  
 Data Path: C:\...ents and Settings\Bioanalyzer\2012-07-09\2012-07-09\_006.xad

Created: 7/9/2012 4:27:24 PM  
 Modified: 7/9/2012 5:08:47 PM

**Electropherogram Summary**



**Overall Results for Ladder**

Noise: 0.1

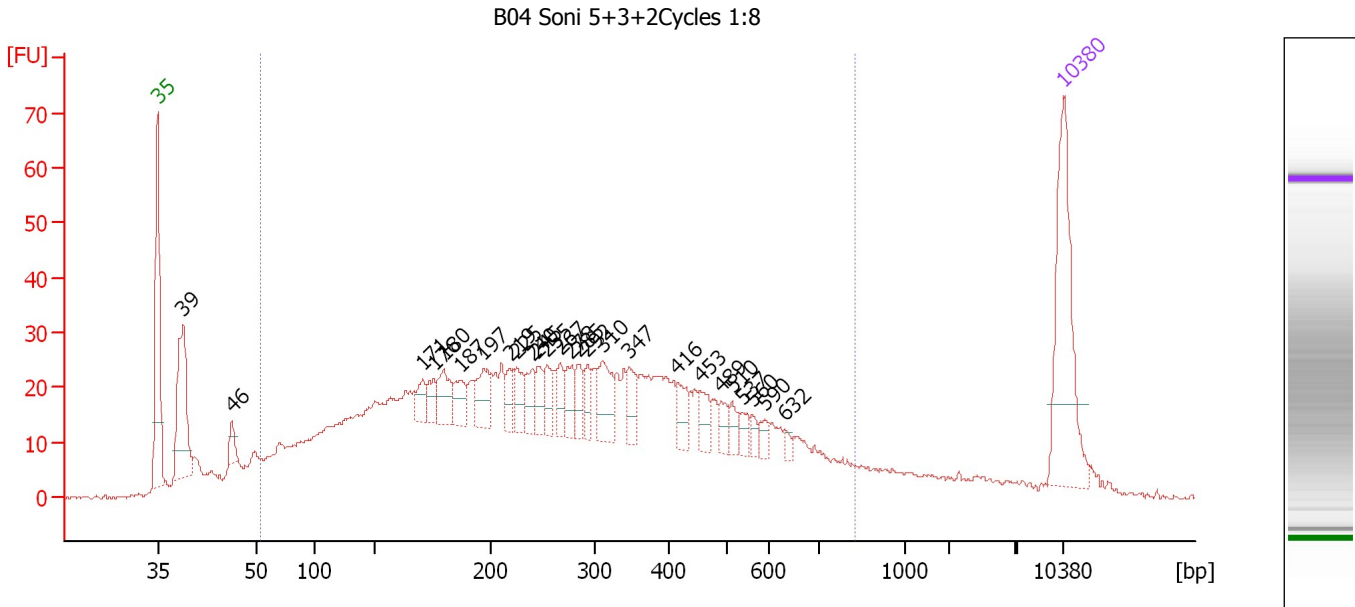
**Peak table for Ladder**

Peak	Size [bp]	Conc. [pg/μl]	Molarity [pmol/l]	Observations
1	35	125.00	5,411.3	Lower Marker
2	40	0.00	0.0	
3	50	150.00	4,545.5	Ladder Peak
4	100	150.00	2,272.7	Ladder Peak
5	150	150.00	1,515.2	Ladder Peak
6	200	150.00	1,136.4	Ladder Peak
7	300	150.00	757.6	Ladder Peak
8	400	150.00	568.2	Ladder Peak
9	500	150.00	454.5	Ladder Peak
10	600	150.00	378.8	Ladder Peak
11	700	150.00	324.7	Ladder Peak
12	1,000	150.00	227.3	Ladder Peak
13	2,000	150.00	113.6	Ladder Peak
14	3,000	150.00	75.8	Ladder Peak
15	7,000	150.00	32.5	Ladder Peak
16	10,380	75.00	10.9	Upper Marker

Assay Class: High Sensitivity DNA Assay  
 Data Path: C:\...ents and Settings\Bioanalyzer\2012-07-09\2012-07-09\_006.xad

Created: 7/9/2012 4:27:24 PM  
 Modified: 7/9/2012 5:08:47 PM

**Electropherogram Summary Continued ...**



**Overall Results for sample 1 : B04 Soni 5+3+2Cycles 1:8**

Number of peaks found: 26                      Corr. Area 1: 1,164.3  
 Noise: 0.3

**Peak table for sample 1 : B04 Soni 5+3+2Cycles 1:8**

Peak	Size [bp]	Conc. [pg/μl]	Molarity [pmol/l]	Observations
1	35	125.00	5,411.3	Lower Marker
2	39	102.55	3,990.2	
3	46	12.86	420.9	
4	171	16.03	142.1	
5	176	14.30	123.4	
6	180	26.86	226.3	
7	187	19.82	160.8	
8	197	28.45	218.9	
9	219	14.08	97.4	
10	225	17.02	114.7	
11	240	16.56	104.4	
12	245	16.45	101.6	
13	255	17.49	104.1	
14	267	14.33	81.4	
15	278	19.32	105.4	
16	285	15.26	81.2	
17	292	14.06	72.9	
18	310	33.84	165.2	
19	347	16.76	73.2	
20	416	16.45	59.9	
21	453	14.89	49.8	
22	489	9.34	28.9	
23	510	8.57	25.4	
24	537	7.81	22.0	
25	560	5.73	15.5	
26	590	6.64	17.1	


Assay Class: High Sensitivity DNA Assay  
Data Path: C:\...ents and Settings\Bioanalyzer\2012-07-09\2012-07-09\_006.xad

Created: 7/9/2012 4:27:24 PM  
Modified: 7/9/2012 5:08:47 PM

**Electropherogram Summary Continued ...****... Peak table for sample 1 : B04 Soni 5+3+2Cycles 1:8**

Peak	Size [bp]	Conc. [pg/ $\mu$ l]	Molarity [pmol/l]	Observations
27	632	3.79	9.1	
28	10,380	75.00	10.9	Upper Marker

**Region table for sample 1 : B04 Soni 5+3+2Cycles 1:8**

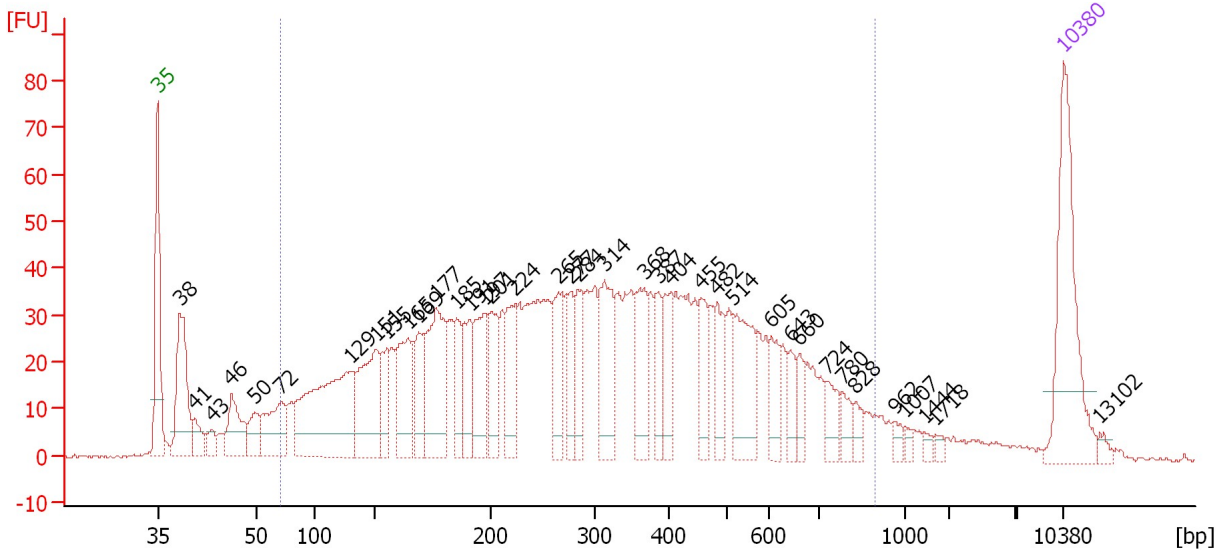
From [bp]	To [bp]	Average Size [bp]	Molarity [pmol/l]	Conc. [pg/ $\mu$ l]	Corr. Area	% of Total	Size distribution in CV [%]	Color
54	824	304	13,003.2	1,662.58	1,164.3	85	54.5	

Assay Class: High Sensitivity DNA Assay  
 Data Path: C:\...ents and Settings\Bioanalyzer\2012-07-09\2012-07-09\_006.xad

Created: 7/9/2012 4:27:24 PM  
 Modified: 7/9/2012 5:08:47 PM

**Electropherogram Summary Continued ...**

B10 Soni 5+3+2Cycles 1:8



**Overall Results for sample 2 : B10 Soni 5+3+2Cycles 1:8**

Number of peaks found: 38                      Corr. Area 1: 1,710.7  
 Noise: 0.3

**Peak table for sample 2 : B10 Soni 5+3+2Cycles 1:8**

Peak	Size [bp]	Conc. [pg/µl]	Molarity [pmol/l]	Observations
1	35	125.00	5,411.3	Lower Marker
2	38	93.18	3,674.2	
3	41	18.55	691.1	
4	43	11.66	407.3	
5	46	42.54	1,393.1	
6	50	21.98	667.8	
7	72	49.94	1,057.8	
8	129	159.23	1,867.2	
9	151	84.43	849.4	
10	155	30.49	297.2	
11	165	65.19	600.1	
12	169	39.57	354.3	
13	177	95.94	823.2	
14	185	33.98	277.6	
15	191	39.97	316.9	
16	197	56.89	436.6	
17	201	38.30	289.3	
18	224	45.23	306.3	
19	265	44.17	252.6	
20	277	32.34	177.0	
21	284	34.54	184.2	
22	314	61.84	298.7	
23	368	41.24	169.9	
24	387	25.97	101.7	
25	404	30.71	115.2	
26	455	30.25	100.7	

Assay Class: High Sensitivity DNA Assay  
 Data Path: C:\...ents and Settings\Bioanalyzer\2012-07-09\2012-07-09\_006.xad


Created: 7/9/2012 4:27:24 PM  
 Modified: 7/9/2012 5:08:47 PM

### Electropherogram Summary Continued ...

#### ... Peak table for sample 2 : B10 Soni 5+3+2Cycles 1:8

Peak	Size [bp]	Conc. [pg/μl]	Molarity [pmol/l]	Observations
27	482	29.60	93.1	
28	514	55.88	164.7	
29	605	20.52	51.4	
30	643	14.49	34.2	
31	660	12.19	28.0	
32	724	15.91	33.3	
33	780	11.54	22.4	
34	828	8.27	15.1	
35	962	4.31	6.8	
36	1,007	3.52	5.3	
37	1,444	2.89	3.0	
38	1,718	3.12	2.8	
39	10,380	75.00	10.9	Upper Marker
40	13,102	0.00	0.0	

#### Region table for sample 2 : B10 Soni 5+3+2Cycles 1:8

From [bp]	To [bp]	Average Size [bp]	Molarity [pmol/l]	Conc. [pg/μl]	Corr. Area	% of Total	Size distribution in CV [%]	Color
70	895	341	12,446.4	1,793.16	1,710.7	87	53.8	

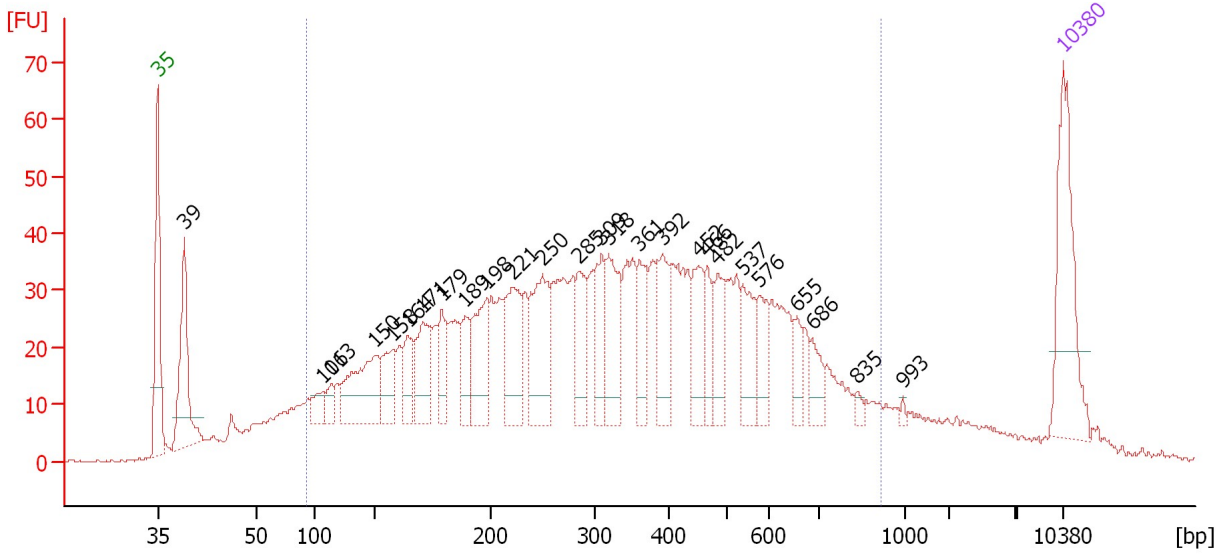


Assay Class: High Sensitivity DNA Assay  
 Data Path: C:\...ents and Settings\Bioanalyzer\2012-07-09\2012-07-09\_006.xad

Created: 7/9/2012 4:27:24 PM  
 Modified: 7/9/2012 5:08:47 PM

**Electropherogram Summary Continued ...**

B16 Soni 5+3+3Cycles 1:8



**Overall Results for sample 3 : B16 Soni 5+3+3Cycles 1:8**

Number of peaks found: 26                      Corr. Area 1: 1,555.7  
 Noise: 0.3

**Peak table for sample 3 : B16 Soni 5+3+3Cycles 1:8**

Peak	Size [bp]	Conc. [pg/μl]	Molarity [pmol/l]	Observations
1	35	125.00	5,411.3	Lower Marker
2	39	114.97	4,459.2	
3	106	20.31	291.2	
4	113	14.29	191.0	
5	150	89.54	903.7	
6	158	38.07	365.2	
7	164	35.81	329.9	
8	171	56.80	504.0	
9	179	34.92	295.4	
10	189	37.42	299.9	
11	198	67.37	514.4	
12	221	75.46	517.7	
13	250	89.06	540.2	
14	285	44.43	236.1	
15	309	45.61	223.4	
16	318	65.97	313.9	
17	361	40.86	171.7	
18	392	46.20	178.6	
19	452	43.71	146.5	
20	466	26.58	86.4	
21	482	34.94	109.7	
22	537	37.36	105.5	
23	576	28.28	74.3	
24	655	15.97	36.9	
25	686	19.54	43.1	
26	835	5.12	9.3	

Assay Class: High Sensitivity DNA Assay  
 Data Path: C:\...ents and Settings\Bioanalyzer\2012-07-09\2012-07-09\_006.xad

Created: 7/9/2012 4:27:24 PM  
 Modified: 7/9/2012 5:08:47 PM

### Electropherogram Summary Continued ...

#### ... Peak table for sample 3 : B16 Soni 5+3+3Cycles 1:8

Peak	Size [bp]	Conc. [pg/μl]	Molarity [pmol/l]	Observations
27	993	2.26	3.4	
28	▶ 10,380	75.00	10.9	Upper Marker

#### Region table for sample 3 : B16 Soni 5+3+3Cycles 1:8

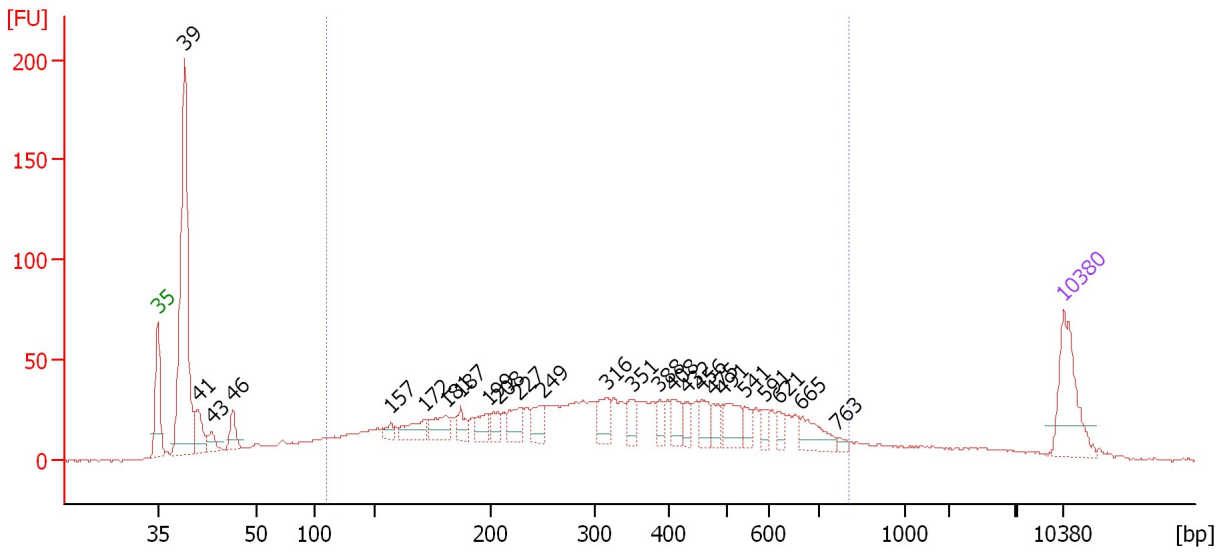
From [bp]	To [bp]	Average Size [bp]	Molarity [pmol/l]	Conc. [pg/μl]	Corr. Area	% of Total	Size distribution in CV [%]	Color
93	917	362	14,333.3	2,287.18	1,555.7	84	51.7	■

Assay Class: High Sensitivity DNA Assay  
 Data Path: C:\...ents and Settings\Bioanalyzer\2012-07-09\2012-07-09\_006.xad

Created: 7/9/2012 4:27:24 PM  
 Modified: 7/9/2012 5:08:47 PM

**Electropherogram Summary Continued ...**

B22 Soni 5+3+3Cycles 1:7



**Overall Results for sample 4 : B22 Soni 5+3+3Cycles 1:7**

Number of peaks found: 25                      Corr. Area 1: 1,306.5  
 Noise: 0.4

**Peak table for sample 4 : B22 Soni 5+3+3Cycles 1:7**

Peak	Size [bp]	Conc. [pg/μl]	Molarity [pmol/l]	Observations
1	35	125.00	5,411.3	Lower Marker
2	39	474.62	18,396.6	
3	41	53.63	1,977.5	
4	43	22.64	792.8	
5	46	34.05	1,111.4	
6	157	13.90	134.2	
7	172	36.28	320.1	
8	181	40.88	342.0	
9	187	24.05	194.5	
10	199	29.29	222.9	
11	208	24.16	176.3	
12	227	40.31	268.7	
13	249	34.99	212.6	
14	316	39.60	189.8	
15	351	27.47	118.6	
16	388	18.75	73.1	
17	408	26.60	98.8	
18	432	17.49	61.4	
19	456	26.21	87.1	
20	475	21.88	69.8	
21	491	42.04	129.6	
22	541	14.52	40.7	
23	591	14.32	36.7	
24	621	14.18	34.6	
25	665	35.08	79.9	
26	763	5.80	11.5	

Assay Class: High Sensitivity DNA Assay  
Data Path: C:\...ents and Settings\Bioanalyzer\2012-07-09\2012-07-09\_006.xad

Created: 7/9/2012 4:27:24 PM  
Modified: 7/9/2012 5:08:47 PM

**Electropherogram Summary Continued ...****... Peak table for sample 4 : B22 Soni 5+3+3Cycles 1:7**

Peak	Size [bp]	Conc. [pg/ $\mu$ l]	Molarity [pmol/l]	Observations
27	10,380	75.00	10.9	Upper Marker

**Region table for sample 4 : B22 Soni 5+3+3Cycles 1:7**

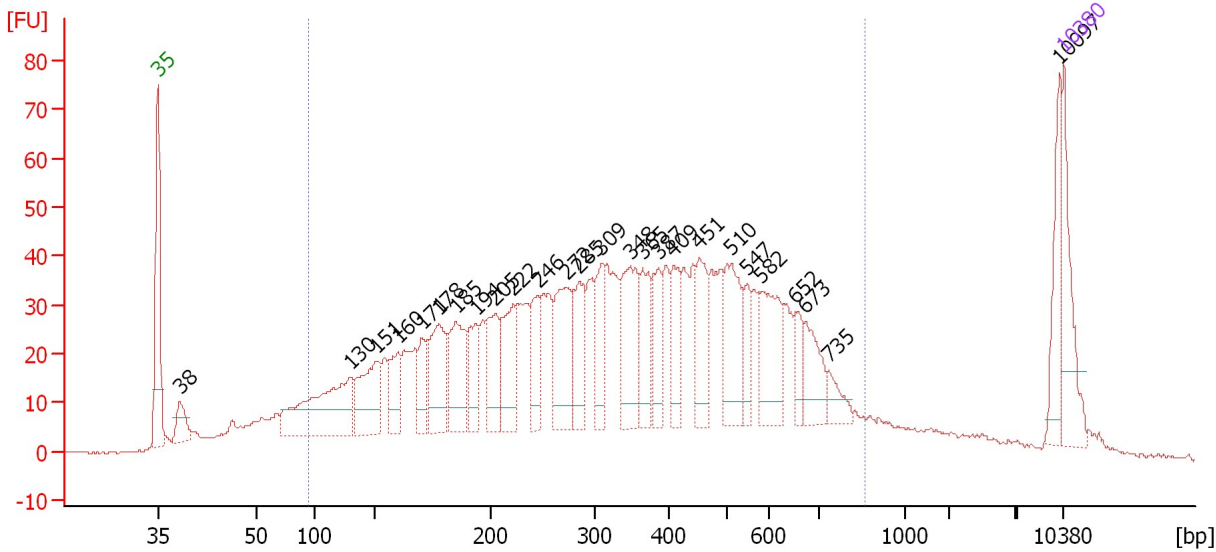
From [bp]	To [bp]	Average Size [bp]	Molarity [pmol/l]	Conc. [pg/ $\mu$ l]	Corr. Area	% of Total	Size distribution in CV [%]	Color
109	807	355	9,570.2	1,572.83	1,306.5	66	48.1	

Assay Class: High Sensitivity DNA Assay  
 Data Path: C:\...ents and Settings\Bioanalyzer\2012-07-09\2012-07-09\_006.xad

Created: 7/9/2012 4:27:24 PM  
 Modified: 7/9/2012 5:08:47 PM

**Electropherogram Summary Continued ...**

B28 Soni 5+3+3Cycles 1:8



**Overall Results for sample 5 : B28 Soni 5+3+3Cycles 1:8**

Number of peaks found: 26                      Corr. Area 1: 1,639.0  
 Noise: 0.2

**Peak table for sample 5 : B28 Soni 5+3+3Cycles 1:8**

Peak	Size [bp]	Conc. [pg/μl]	Molarity [pmol/l]	Observations
1	35	125.00	5,411.3	Lower Marker
2	38	45.99	1,815.6	
3	130	203.32	2,363.9	
4	151	110.68	1,111.3	
5	160	56.24	532.0	
6	171	48.89	433.6	
7	178	116.93	995.6	
8	185	109.31	895.1	
9	194	61.84	483.5	
10	205	87.92	649.8	
11	222	91.87	627.1	
12	246	60.03	370.4	
13	272	127.35	708.8	
14	285	72.23	384.0	
15	309	67.23	329.9	
16	348	115.65	504.0	
17	365	69.68	289.3	
18	387	53.13	207.8	
19	409	56.05	207.7	
20	451	73.28	245.9	
21	510	97.60	290.1	
22	547	35.33	97.9	
23	582	92.11	239.6	
24	652	28.26	65.6	
25	673	54.26	122.1	
26	735	23.96	49.4	


Assay Class: High Sensitivity DNA Assay  
Data Path: C:\...ents and Settings\Bioanalyzer\2012-07-09\2012-07-09\_006.xad

Created: 7/9/2012 4:27:24 PM  
Modified: 7/9/2012 5:08:47 PM

**Electropherogram Summary Continued ...****... Peak table for sample 5 : B28 Soni 5+3+3Cycles 1:8**

Peak	Size [bp]	Conc. [pg/μl]	Molarity [pmol/l]	Observations
27	10,097	53.78	8.1	
28	10,380	75.00	10.9	Upper Marker

**Region table for sample 5 : B28 Soni 5+3+3Cycles 1:8**

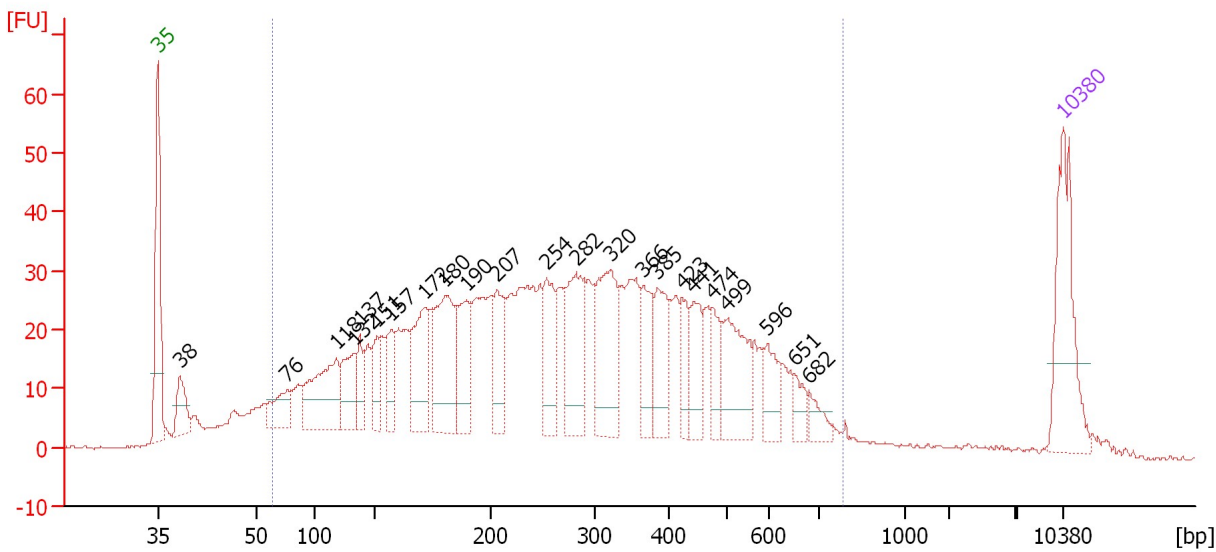
From [bp]	To [bp]	Average Size [bp]	Molarity [pmol/l]	Conc. [pg/μl]	Corr. Area	% of Total	Size distribution in CV [%]	Color
94	863	363	20,563.1	3,350.72	1,639.0	85	48.9	

Assay Class: High Sensitivity DNA Assay  
 Data Path: C:\...ents and Settings\Bioanalyzer\2012-07-09\2012-07-09\_006.xad

Created: 7/9/2012 4:27:24 PM  
 Modified: 7/9/2012 5:08:47 PM

**Electropherogram Summary Continued ...**

B34 Soni 5+3+2Cycles 1:8



**Overall Results for sample 6 : B34 Soni 5+3+2Cycles 1:8**

Number of peaks found: 23                      Corr. Area 1: 1,332.3  
 Noise: 0.2

**Peak table for sample 6 : B34 Soni 5+3+2Cycles 1:8**

Peak	Size [bp]	Conc. [pg/μl]	Molarity [pmol/l]	Observations
1	35	125.00	5,411.3	Lower Marker
2	38	43.68	1,726.2	
3	76	38.16	765.8	
4	118	105.30	1,355.0	
5	132	51.84	593.0	
6	137	32.21	355.3	
7	151	33.36	334.6	
8	157	37.78	364.3	
9	172	81.94	723.5	
10	180	118.41	994.1	
11	190	61.42	490.7	
12	207	58.61	429.9	
13	254	60.19	359.1	
14	282	88.25	474.6	
15	320	102.20	483.2	
16	366	44.51	184.2	
17	385	53.22	209.7	
18	423	30.10	107.8	
19	441	38.88	133.5	
20	474	31.92	102.1	
21	499	72.33	219.8	
22	596	29.06	73.9	
23	651	15.10	35.1	
24	682	16.07	35.7	
25	10,380	75.00	10.9	Upper Marker

Assay Class: High Sensitivity DNA Assay  
Data Path: C:\...ents and Settings\Bioanalyzer\2012-07-09\2012-07-09\_006.xad

Created: 7/9/2012 4:27:24 PM  
Modified: 7/9/2012 5:08:47 PM

**Electropherogram Summary Continued ...**

... Region table for sample 6 : **B34 Soni 5+3+2Cycles 1:8**

From [bp]	To [bp]	Average Size [bp]	Molarity [pmol/l]	Conc. [pg/μl]	Corr. Area	% of Total	Size distribution in CV [%]	Color
64	780	307	16,827.0	2,275.34	1,332.3	90	50.9	■

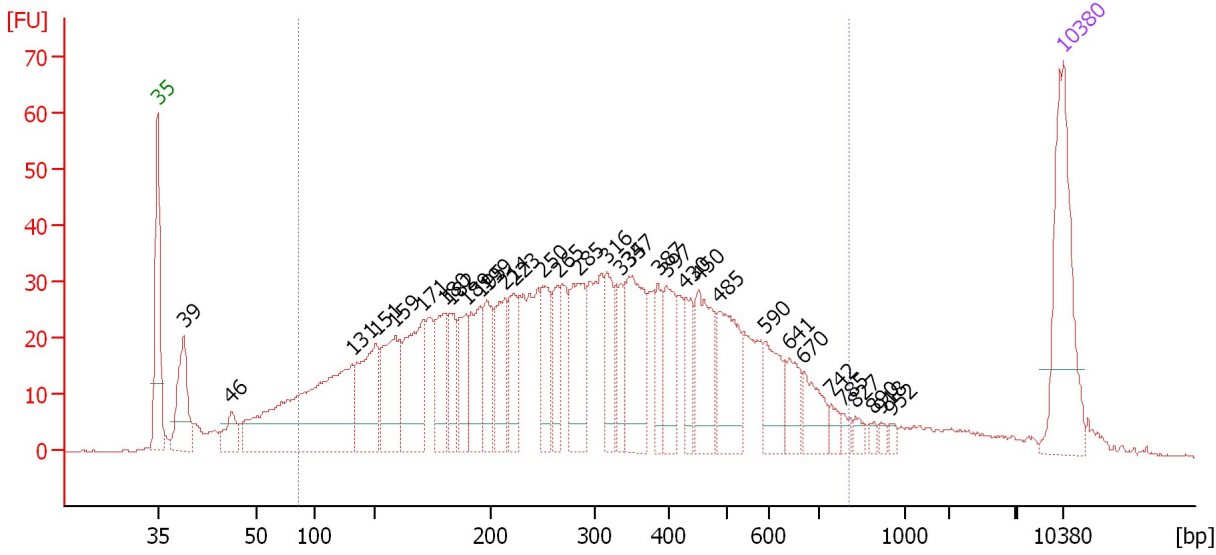


Assay Class: High Sensitivity DNA Assay  
 Data Path: C:\...ents and Settings\Bioanalyzer\2012-07-09\2012-07-09\_006.xad

Created: 7/9/2012 4:27:24 PM  
 Modified: 7/9/2012 5:08:47 PM

**Electropherogram Summary Continued ...**

B40 Soni 5+3+3Cycles 1:8



**Overall Results for sample 7 : B40 Soni 5+3+3Cycles 1:8**

Number of peaks found: 33                      Corr. Area 1: 1,335.7  
 Noise: 0.2

**Peak table for sample 7 : B40 Soni 5+3+3Cycles 1:8**

Peak	Size [bp]	Conc. [pg/μl]	Molarity [pmol/l]	Observations
1	35	125.00	5,411.3	Lower Marker
2	39	67.48	2,622.6	
3	46	24.32	796.6	
4	131	232.25	2,689.0	
5	151	82.98	834.5	
6	159	72.13	688.1	
7	171	89.39	792.4	
8	180	48.71	410.2	
9	182	40.25	334.2	
10	189	38.75	309.9	
11	195	57.58	446.5	
12	199	37.85	288.9	
13	214	42.21	298.6	
14	223	43.25	294.0	
15	250	45.22	273.7	
16	265	33.57	191.7	
17	285	65.50	348.6	
18	316	41.62	199.3	
19	335	29.66	134.1	
20	347	76.42	334.0	
21	387	26.27	102.9	
22	397	41.25	157.3	
23	430	27.06	95.4	
24	450	57.81	194.4	
25	485	58.27	181.9	
26	590	35.97	92.3	

Assay Class: High Sensitivity DNA Assay  
 Data Path: C:\...ents and Settings\Bioanalyzer\2012-07-09\2012-07-09\_006.xad


Created: 7/9/2012 4:27:24 PM  
 Modified: 7/9/2012 5:08:47 PM

**Electropherogram Summary Continued ...**

**... Peak table for sample 7 : B40 Soni 5+3+3Cycles 1:8**

Peak	Size [bp]	Conc. [pg/μl]	Molarity [pmol/l]	Observations
27	641	22.32	52.7	
28	670	25.54	57.8	
29	742	8.28	16.9	
30	785	5.26	10.1	
31	827	6.18	11.3	
32	890	3.46	5.9	
33	918	3.36	5.5	
34	952	3.40	5.4	
35	▶ 10,380	75.00	10.9	Upper Marker

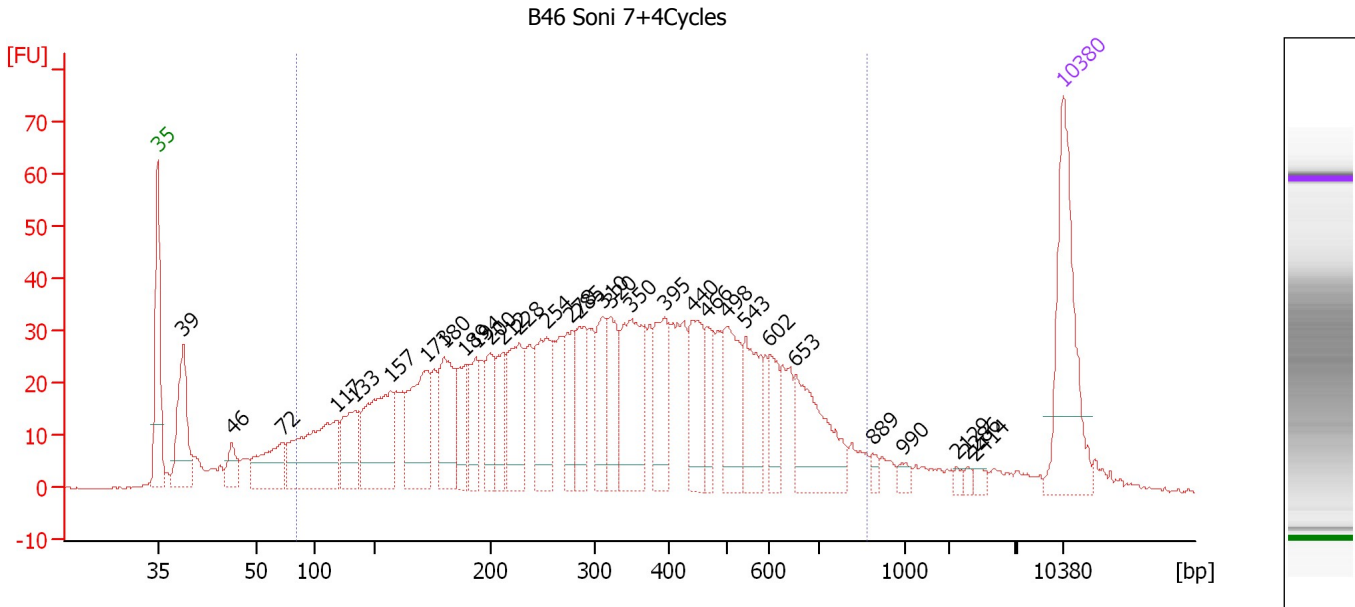
**Region table for sample 7 : B40 Soni 5+3+3Cycles 1:8**

From [bp]	To [bp]	Average Size [bp]	Molarity [pmol/l]	Conc. [pg/μl]	Corr. Area	% of Total	Size distribution in CV [%]	Color
86	805	324	11,638.7	1,720.40	1,335.7	85	50.0	

Assay Class: High Sensitivity DNA Assay  
 Data Path: C:\...ents and Settings\Bioanalyzer\2012-07-09\2012-07-09\_006.xad

Created: 7/9/2012 4:27:24 PM  
 Modified: 7/9/2012 5:08:47 PM

**Electropherogram Summary Continued ...**



**Overall Results for sample 8 : B46 Soni 7+4Cycles**

Number of peaks found: 31                      Corr. Area 1: 1,417.4  
 Noise: 0.2

**Peak table for sample 8 : B46 Soni 7+4Cycles**

Peak	Size [bp]	Conc. [pg/μl]	Molarity [pmol/l]	Observations
1	35	125.00	5,411.3	Lower Marker
2	39	81.66	3,179.0	
3	46	21.50	702.9	
4	72	50.14	1,056.0	
5	117	112.50	1,452.3	
6	133	48.05	547.4	
7	157	100.39	969.2	
8	173	90.57	795.2	
9	180	67.32	566.8	
10	189	39.92	320.4	
11	194	38.31	299.4	
12	200	36.47	276.5	
13	212	35.72	255.0	
14	228	65.42	434.7	
15	254	69.64	415.7	
16	278	38.57	210.4	
17	285	44.15	235.0	
18	310	43.54	213.0	
19	320	44.88	212.2	
20	350	85.94	371.9	
21	395	51.54	197.7	
22	440	49.49	170.3	
23	466	24.61	80.1	
24	498	53.63	163.3	
25	543	48.60	135.6	
26	602	22.46	56.5	

Assay Class: High Sensitivity DNA Assay  
 Data Path: C:\...ents and Settings\Bioanalyzer\2012-07-09\2012-07-09\_006.xad

Created: 7/9/2012 4:27:24 PM  
 Modified: 7/9/2012 5:08:47 PM

### Electropherogram Summary Continued ...

#### ... Peak table for sample 8 : B46 Soni 7+4Cycles

Peak	Size [bp]	Conc. [pg/μl]	Molarity [pmol/l]	Observations
27	653	64.59	149.9	
28	889	4.69	8.0	
29	990	5.01	7.7	
30	2,129	2.63	1.9	
31	2,286	2.32	1.5	
32	2,414	3.46	2.2	
33	10,380	75.00	10.9	Upper Marker

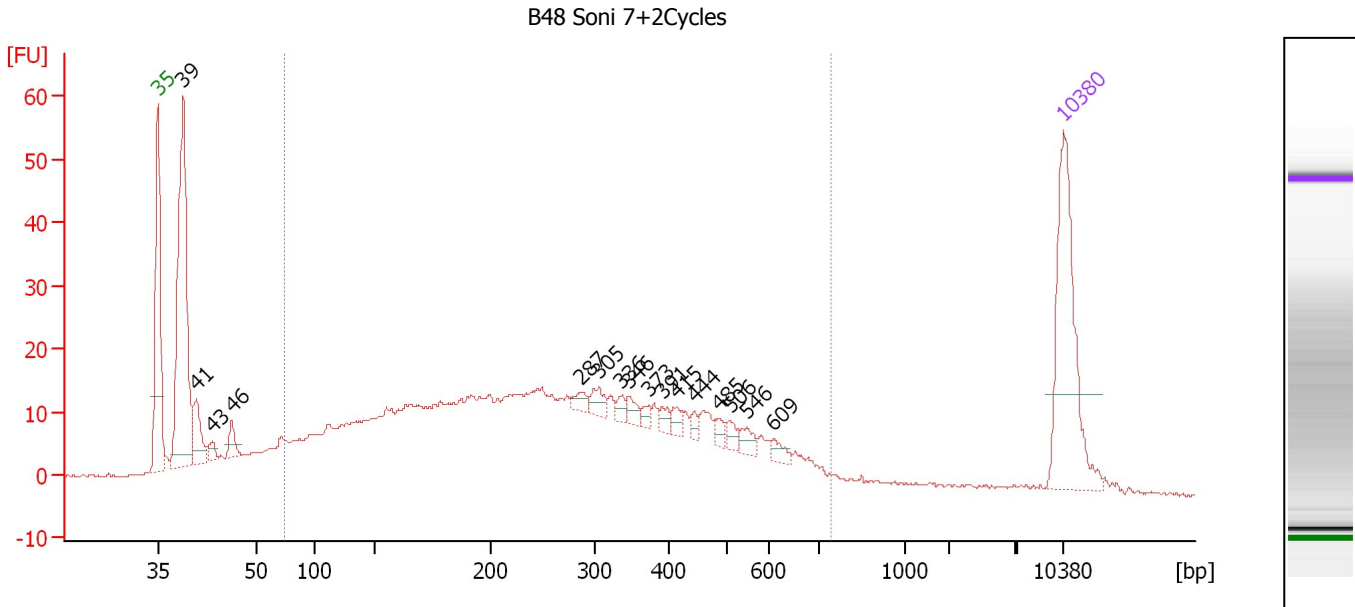
#### Region table for sample 8 : B46 Soni 7+4Cycles

From [bp]	To [bp]	Average Size [bp]	Molarity [pmol/l]	Conc. [pg/μl]	Corr. Area	% of Total	Size distribution in CV [%]	Color
85	870	350	10,692.3	1,653.35	1,417.4	85	50.5	

Assay Class: High Sensitivity DNA Assay  
 Data Path: C:\...ents and Settings\Bioanalyzer\2012-07-09\2012-07-09\_006.xad

Created: 7/9/2012 4:27:24 PM  
 Modified: 7/9/2012 5:08:47 PM

**Electropherogram Summary Continued ...**



**Setpoint Deviations for sample 9 : B48 Soni 7+2Cycles**

Height Threshold [FU] : 2

**Overall Results for sample 9 : B48 Soni 7+2Cycles**

Number of peaks found: 16                      Corr. Area 1: 640.3  
 Noise: 0.2

**Peak table for sample 9 : B48 Soni 7+2Cycles**

Peak	Size [bp]	Conc. [pg/µl]	Molarity [pmol/l]	Observations
1	35	125.00	5,411.3	Lower Marker
2	39	222.60	8,660.1	
3	41	30.79	1,138.8	
4	43	6.70	233.8	
5	46	11.62	380.2	
6	287	6.78	35.8	
7	305	9.57	47.5	
8	336	5.38	24.3	
9	346	7.14	31.3	
10	373	3.99	16.2	
11	391	5.68	22.0	
12	415	5.83	21.3	
13	444	4.36	14.9	
14	485	4.67	14.6	
15	506	5.67	17.0	
16	546	7.31	20.3	
17	609	5.63	14.0	
18	10,380	75.00	10.9	Upper Marker

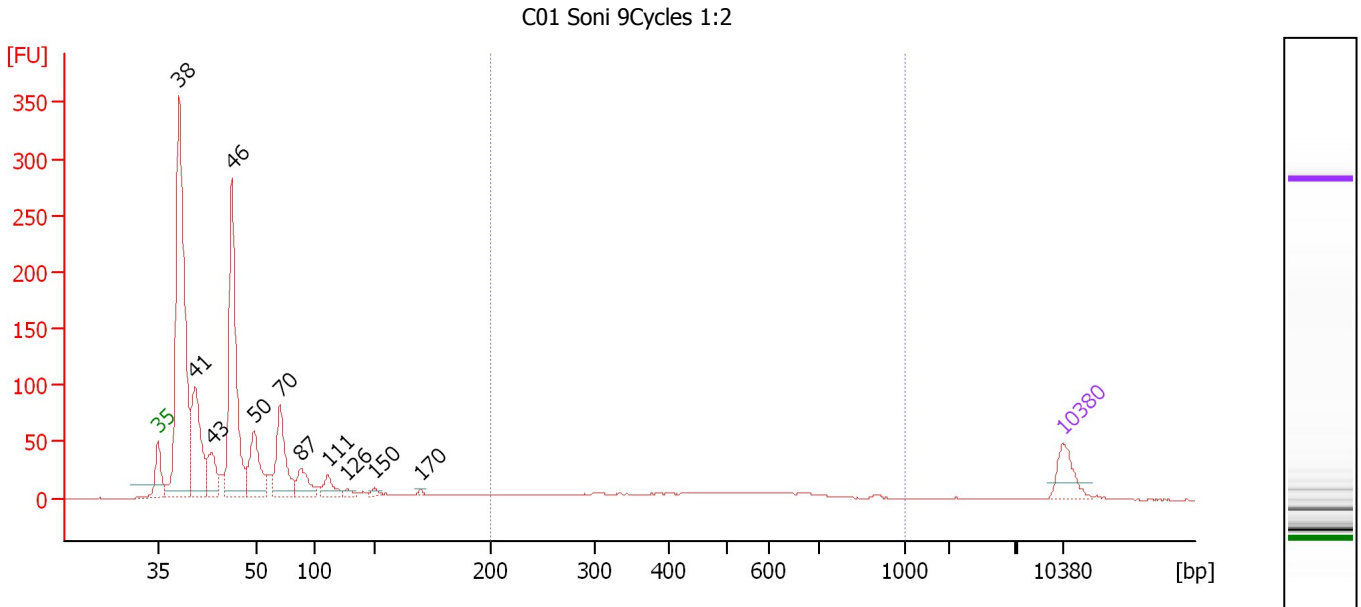
**Region table for sample 9 : B48 Soni 7+2Cycles**

From [bp]	To [bp]	Average Size [bp]	Molarity [pmol/l]	Conc. [pg/µl]	Corr. Area	% of Total	Size distribution in CV [%]	Color
73	742	295	7,637.1	1,018.20	640.3	74	50.7	Blue

Assay Class: High Sensitivity DNA Assay  
 Data Path: C:\...ents and Settings\Bioanalyzer\2012-07-09\2012-07-09\_006.xad

Created: 7/9/2012 4:27:24 PM  
 Modified: 7/9/2012 5:08:47 PM

**Electropherogram Summary Continued ...**



**Overall Results for sample 10 : C01 Soni 9Cycles 1:2**

Number of peaks found: 11                      Corr. Area 1: 170.7  
 Noise: 0.2

**Peak table for sample 10 : C01 Soni 9Cycles 1:2**

Peak	Size [bp]	Conc. [pg/μl]	Molarity [pmol/l]	Observations
1	35	125.00	5,411.3	Lower Marker
2	38	1,540.08	60,983.5	
3	41	454.61	16,919.2	
4	43	163.92	5,741.0	
5	46	881.25	28,825.9	
6	50	249.69	7,598.5	
7	70	294.32	6,359.6	
8	87	115.71	2,004.0	
9	111	72.62	995.3	
10	126	18.70	224.2	
11	150	17.46	176.3	
12	170	8.65	77.1	
13	10,380	75.00	10.9	Upper Marker

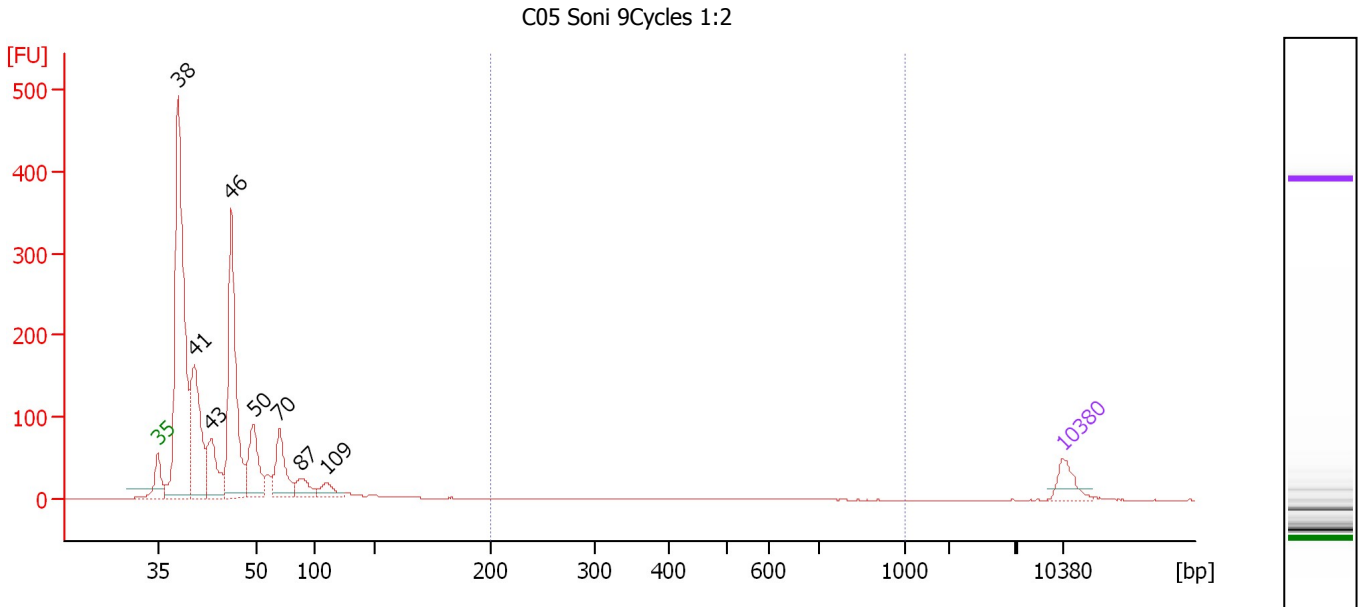
**Region table for sample 10 : C01 Soni 9Cycles 1:2**

From [bp]	To [bp]	Average Size [bp]	Molarity [pmol/l]	Conc. [pg/μl]	Corr. Area	% of Total	Size distribution in CV [%]	Color
200	1,000	470	1,175.8	289.28	170.7	9	40.6	Blue

Assay Class: High Sensitivity DNA Assay  
 Data Path: C:\...ents and Settings\Bioanalyzer\2012-07-09\2012-07-09\_006.xad

Created: 7/9/2012 4:27:24 PM  
 Modified: 7/9/2012 5:08:47 PM

**Electropherogram Summary Continued ...**



**Overall Results for sample 11 : C05 Soni 9Cycles 1:2**

Number of peaks found: 8                      Corr. Area 1: 26.5  
 Noise: 0.2

**Peak table for sample 11 : C05 Soni 9Cycles 1:2**

Peak	Size [bp]	Conc. [pg/μl]	Molarity [pmol/l]	Observations
1	35	125.00	5,411.3	Lower Marker
2	38	2,144.05	85,047.5	
3	41	759.27	28,284.9	
4	43	348.71	12,245.3	
5	46	1,145.89	37,546.6	
6	50	349.78	10,675.4	
7	70	319.32	6,954.6	
8	87	117.54	2,044.0	
9	109	95.38	1,329.0	
10	10,380	75.00	10.9	Upper Marker

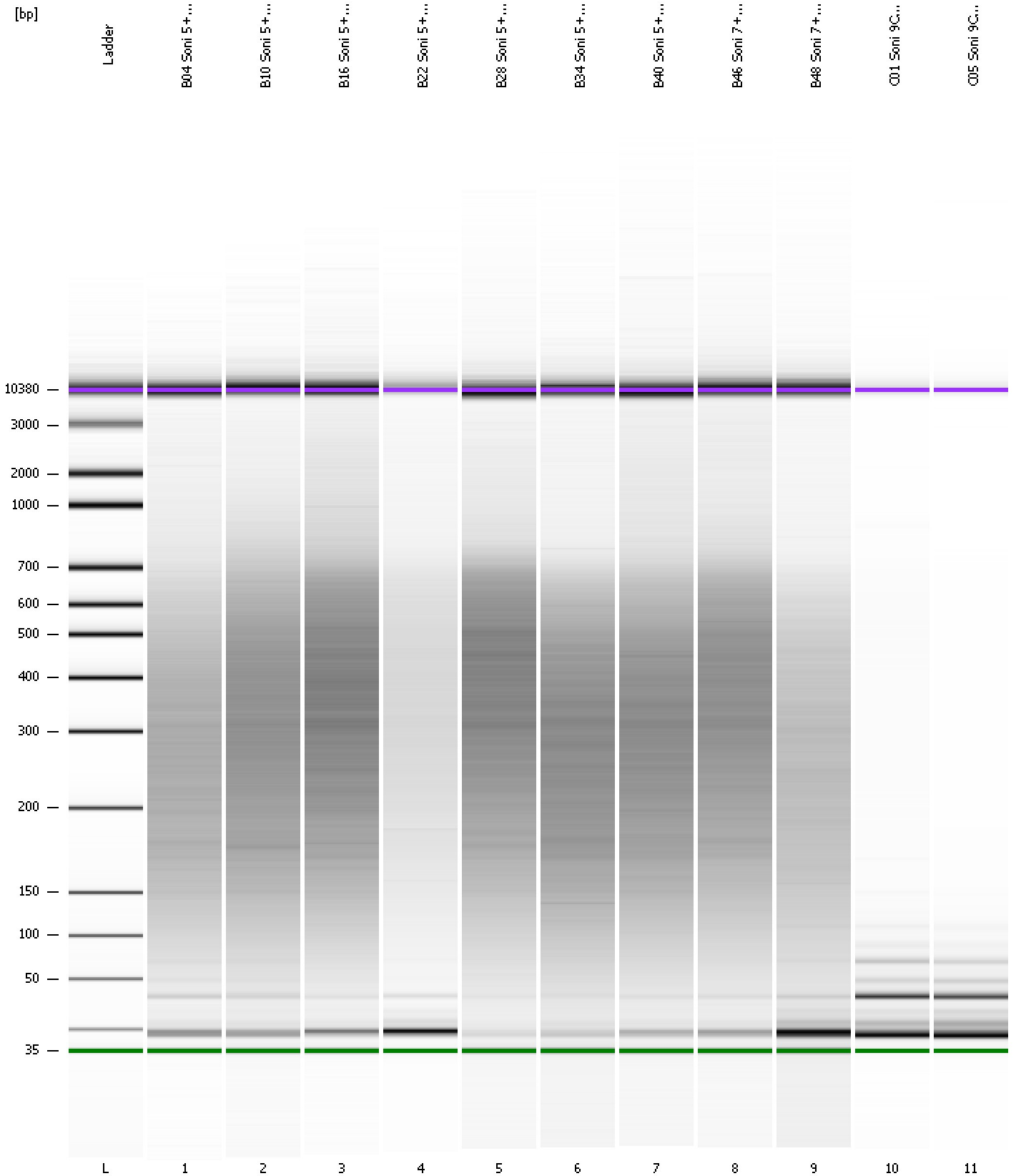
**Region table for sample 11 : C05 Soni 9Cycles 1:2**

From [bp]	To [bp]	Average Size [bp]	Molarity [pmol/l]	Conc. [pg/μl]	Corr. Area	% of Total	Size distribution in CV [%]	Color
200	1,000	421	199.6	45.00	26.5	1	40.5	Blue

Assay Class: High Sensitivity DNA Assay  
Data Path: C:\...ents and Settings\Bioanalyzer\2012-07-09\2012-07-09\_006.xad

Created: 7/9/2012 4:27:24 PM  
Modified: 7/9/2012 5:08:47 PM

**Gel Image**





Assay Class: High Sensitivity DNA Assay  
 Data Path: C:\...ents and Settings\Bioanalyzer\2012-07-09\2012-07-09\_006.xad

Created: 7/9/2012 4:27:24 PM  
 Modified: 7/9/2012 5:08:47 PM

**Run Logbook**

Description	Number	Source	Category	Sub Category	Time	Time Zone	User	Host
Run ended on port 1 (Number of wells acquired: 12)		Instrument	Run		7/9/2012 5:08:43 PM	(GMT --07:00) Pacific Standard Time	UC Davis	D8XSMGH1
Run started on port 1 (File: C:\Documents and Settings\Bioanalyzer\2012-07-09\2012-07-09_006.xad)		Instrument	Run		7/9/2012 4:27:29 PM	(GMT --07:00) Pacific Standard Time	UC Davis	D8XSMGH1
Product Number : G2938B		Instrument	Run		7/9/2012 4:27:29 PM	(GMT --07:00) Pacific Standard Time	UC Davis	D8XSMGH1
Name :		Instrument	Run		7/9/2012 4:27:29 PM	(GMT --07:00) Pacific Standard Time	UC Davis	D8XSMGH1
Vendor : Agilent Technologies		Instrument	Run		7/9/2012 4:27:29 PM	(GMT --07:00) Pacific Standard Time	UC Davis	D8XSMGH1
Serial# : DE13701086		Instrument	Run		7/9/2012 4:27:29 PM	(GMT --07:00) Pacific Standard Time	UC Davis	D8XSMGH1
Firmware : C.01.069		Instrument	Run		7/9/2012 4:27:29 PM	(GMT --07:00) Pacific Standard Time	UC Davis	D8XSMGH1
Cartridge : Electrode		Instrument	Run		7/9/2012 4:27:29 PM	(GMT --07:00) Pacific Standard Time	UC Davis	D8XSMGH1