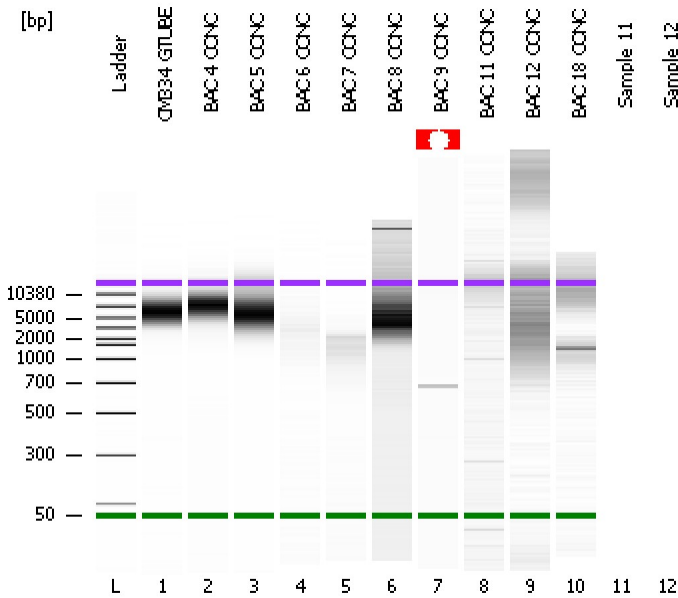


Assay Class: DNA 12000
Data Path: C:\...ents and Settings\Bioanalyzer\2012-07-10\2012-07-10_001.xad

Created: 7/10/2012 8:49:09 AM
Modified: 7/10/2012 3:57:11 PM

Electrophoresis File Run Summary



Instrument Information:

Instrument Name: DE13701086 Firmware: C.01.069
Serial#: DE13701086 Type: G2938B

Assay Information:

Assay Origin Path: C:\Program Files\Agilent\2100 bioanalyzer\2100 expert\assays\dsDNA\DNA 12000 Series II.xsy

Assay Class: DNA 12000

Version: 2.4

Assay Comments: DNA Analysis 100 -12000 bp

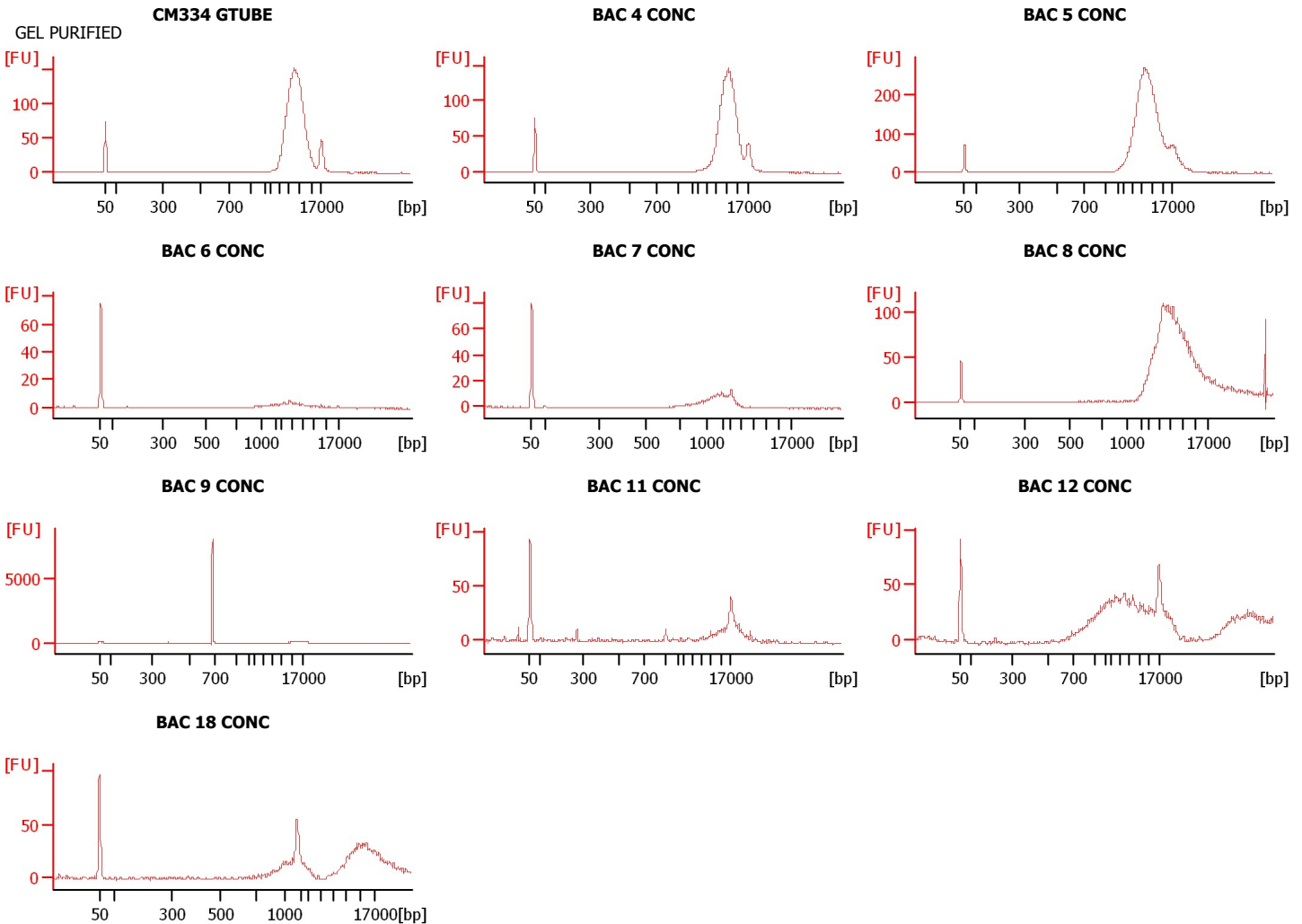
© Copyright 2003-2009 Agilent Technologies, Inc.

Chip Information:

Chip Lot #:

Reagent Kit Lot #:

Chip Comments:



Assay Class: DNA 12000
 Data Path: C:\...ents and Settings\Bioanalyzer\2012-07-10\2012-07-10_001.xad

Created: 7/10/2012 8:49:09 AM
 Modified: 7/10/2012 3:57:11 PM

Electrophoresis File Run Summary (Chip Summary)

Sample Name	Sample Comment	Rest. Digest	Status	Observation	Result Label	Result Color
CM334 GTUBE	GEL PURIFIED	<input type="checkbox"/>	✓			
BAC 4 CONC		<input type="checkbox"/>	✓			
BAC 5 CONC		<input type="checkbox"/>	✓			
BAC 6 CONC		<input type="checkbox"/>	✓			
BAC 7 CONC		<input type="checkbox"/>	✓			
BAC 8 CONC		<input type="checkbox"/>	✓			
BAC 9 CONC		<input type="checkbox"/>	⚠			
BAC 11 CONC		<input type="checkbox"/>	✓			
BAC 12 CONC		<input type="checkbox"/>	✓			
BAC 18 CONC		<input type="checkbox"/>	✓			
Sample 11		<input type="checkbox"/>				
Sample 12		<input type="checkbox"/>				
Ladder		<input type="checkbox"/>	✓			

Chip Lot #

Reagent Kit Lot #

Chip Comments :

Assay Class: DNA 12000
Data Path: C:\...ents and Settings\Bioanalyzer\2012-07-10\2012-07-10_001.xad

Created: 7/10/2012 8:49:09 AM
Modified: 7/10/2012 3:57:11 PM

Electrophoresis Assay Details

General Analysis Settings

Number of Available Sample and Ladder Wells (Max.) : 13
Minimum Visible Range [s] : 20
Maximum Visible Range [s] : 99
Start Analysis Time Range [s] : 20
End Analysis Time Range [s] : 98.95
Ladder Concentration [ng/μl] : 44
Uses Standard Area for Ladder Fragments
Lower Marker Concentration [ng/μl] : 8.3
Upper Marker Concentration [ng/μl] : 4.2
Used Upper Marker for Quantitation
This is a Qualitative Assay Only
Standard Curve Fit is Point to Point
Show Data Aligned to Lower and Upper Marker

Integrator Settings

Integration Start Time [s] : 20
Integration End Time [s] : 98.95
Slope Threshold : 0.8
Height Threshold [FU] : 20
Area Threshold : 0.1
Width Threshold [s] : 0.5
Baseline Plateau [s] : 0.5

Filter Settings

Filter Width [s] : 0.5
Polynomial Order : 4

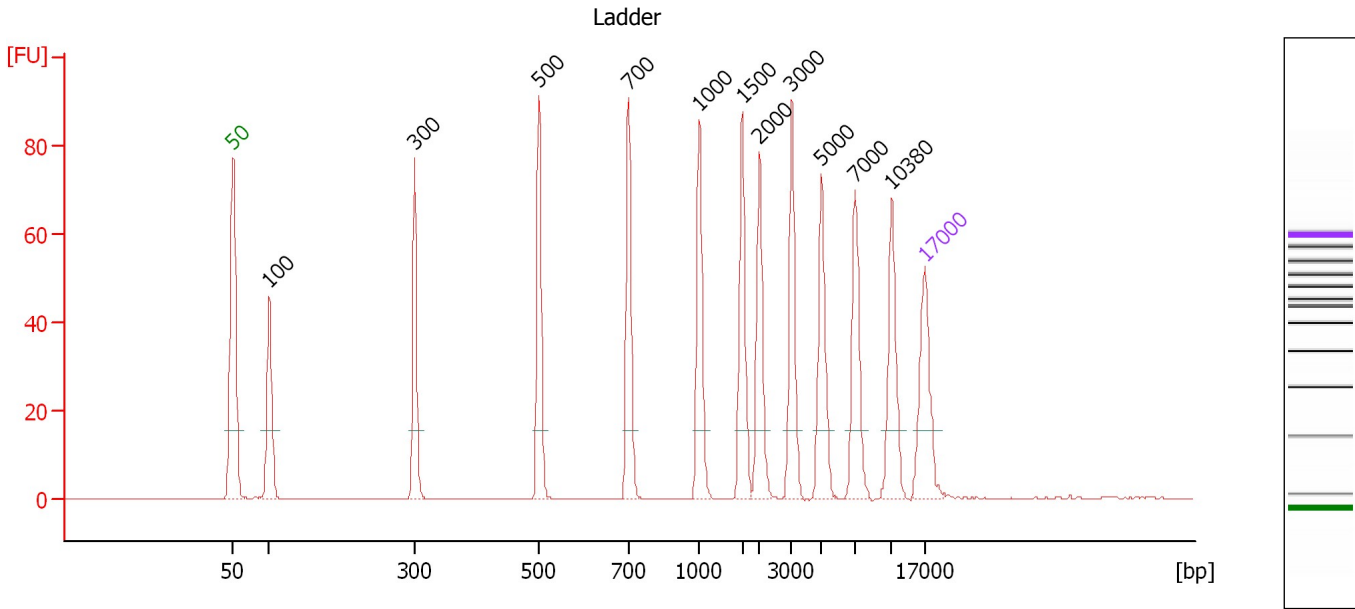
Ladder

Ladder Peak	Size	Area
1	50	120
2	100	48
3	300	61
4	500	77
5	700	81
6	1000	86
7	1500	92
8	2000	92
9	3000	96
10	5000	100
11	7000	98
12	10380	102
13	17000	110

Assay Class: DNA 12000
 Data Path: C:\...ents and Settings\Bioanalyzer\2012-07-10\2012-07-10_001.xad

Created: 7/10/2012 8:49:09 AM
 Modified: 7/10/2012 3:57:11 PM

Electropherogram Summary



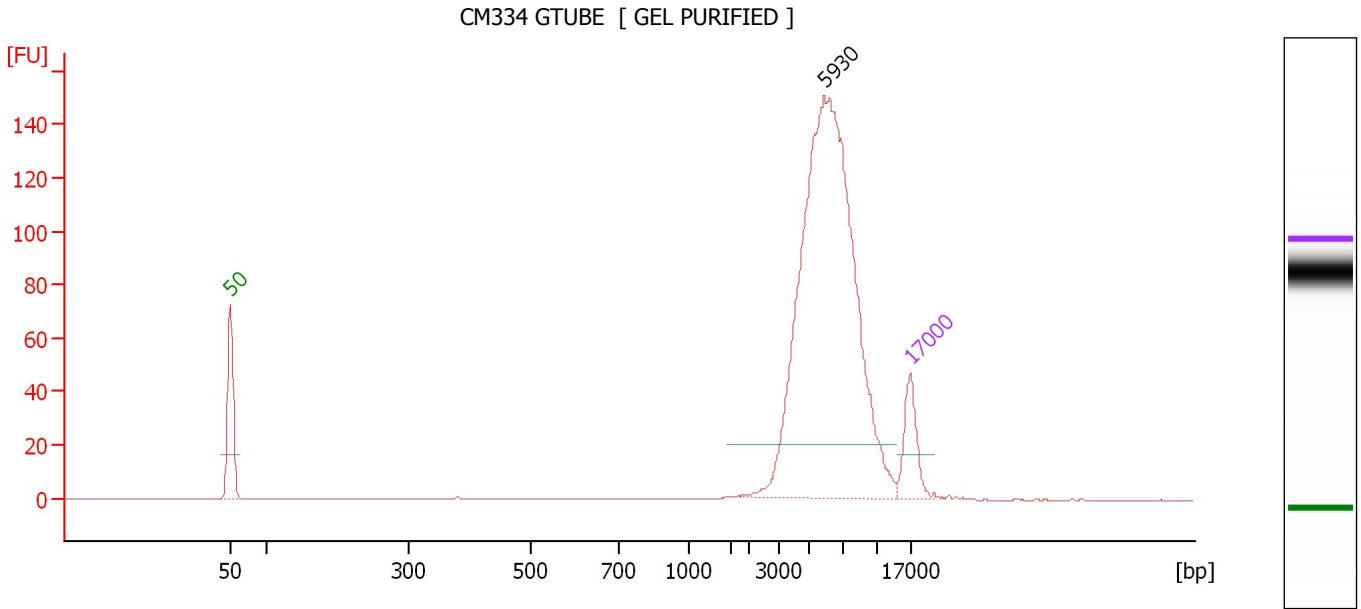
Peak table for Ladder

Peak	Size [bp]	Conc. [ng/μl]	Molarity [nmol/l]	Observations
1	50	8.30	251.5	Lower Marker
2	100	4.00	60.6	Ladder Peak
3	300	4.00	20.2	Ladder Peak
4	500	4.00	12.1	Ladder Peak
5	700	4.00	8.7	Ladder Peak
6	1,000	4.00	6.1	Ladder Peak
7	1,500	4.00	4.0	Ladder Peak
8	2,000	4.00	3.0	Ladder Peak
9	3,000	4.00	2.0	Ladder Peak
10	5,000	4.00	1.2	Ladder Peak
11	7,000	4.00	0.9	Ladder Peak
12	10,380	4.00	0.6	Ladder Peak
13	17,000	4.20	0.4	Upper Marker

Assay Class: DNA 12000
Data Path: C:\...ents and Settings\Bioanalyzer\2012-07-10\2012-07-10_001.xad

Created: 7/10/2012 8:49:09 AM
Modified: 7/10/2012 3:57:11 PM

Electropherogram Summary Continued ...



Overall Results for sample 1 : CM334 GTUBE

Number of peaks found: 1

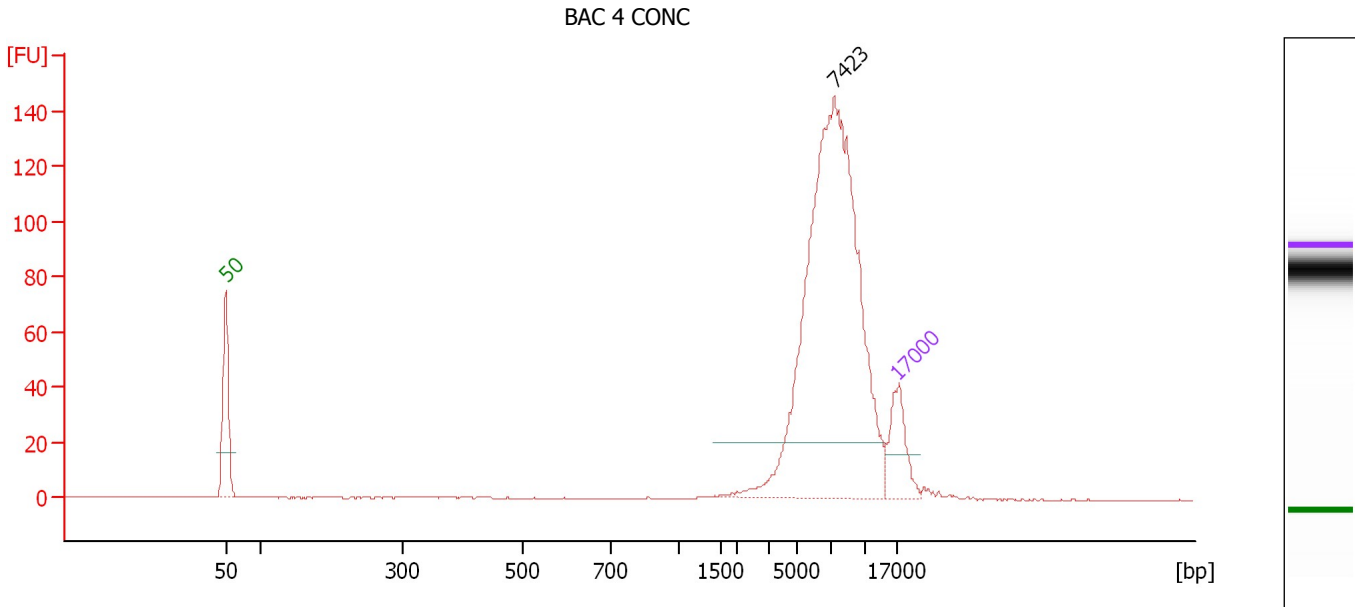
Peak table for sample 1 : CM334 GTUBE

Peak	Size [bp]	Conc. [ng/μl]	Molarity [nmol/l]	Observations
1	50	8.30	251.5	Lower Marker
2	5,930	61.70	15.8	
3	17,000	4.20	0.4	Upper Marker

Assay Class: DNA 12000
Data Path: C:\...ents and Settings\Bioanalyzer\2012-07-10\2012-07-10_001.xad

Created: 7/10/2012 8:49:09 AM
Modified: 7/10/2012 3:57:11 PM

Electropherogram Summary Continued ...



Overall Results for sample 2 : BAC 4 CONC

Number of peaks found: 1

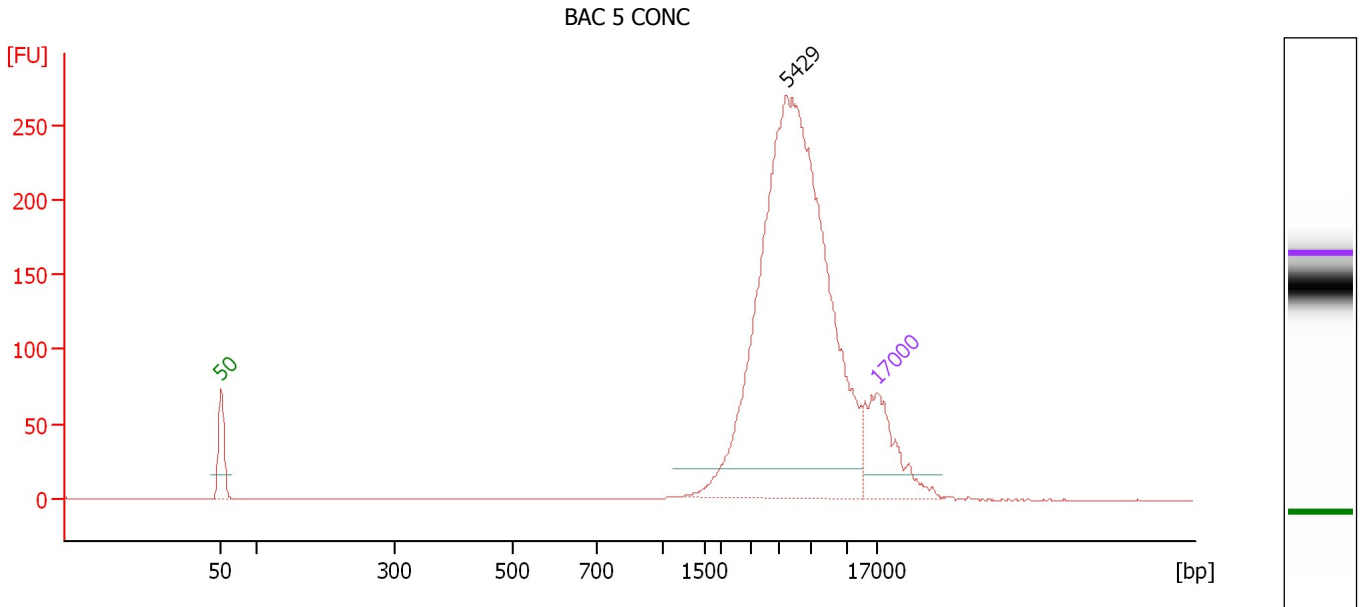
Peak table for sample 2 : BAC 4 CONC

Peak	Size [bp]	Conc. [ng/μl]	Molarity [nmol/l]	Observations
1	50	8.30	251.5	Lower Marker
2	7,423	49.80	10.2	
3	17,000	4.20	0.4	Upper Marker

Assay Class: DNA 12000
Data Path: C:\...ents and Settings\Bioanalyzer\2012-07-10\2012-07-10_001.xad

Created: 7/10/2012 8:49:09 AM
Modified: 7/10/2012 3:57:11 PM

Electropherogram Summary Continued ...



Overall Results for sample 3 : BAC 5 CONC

Number of peaks found: 1

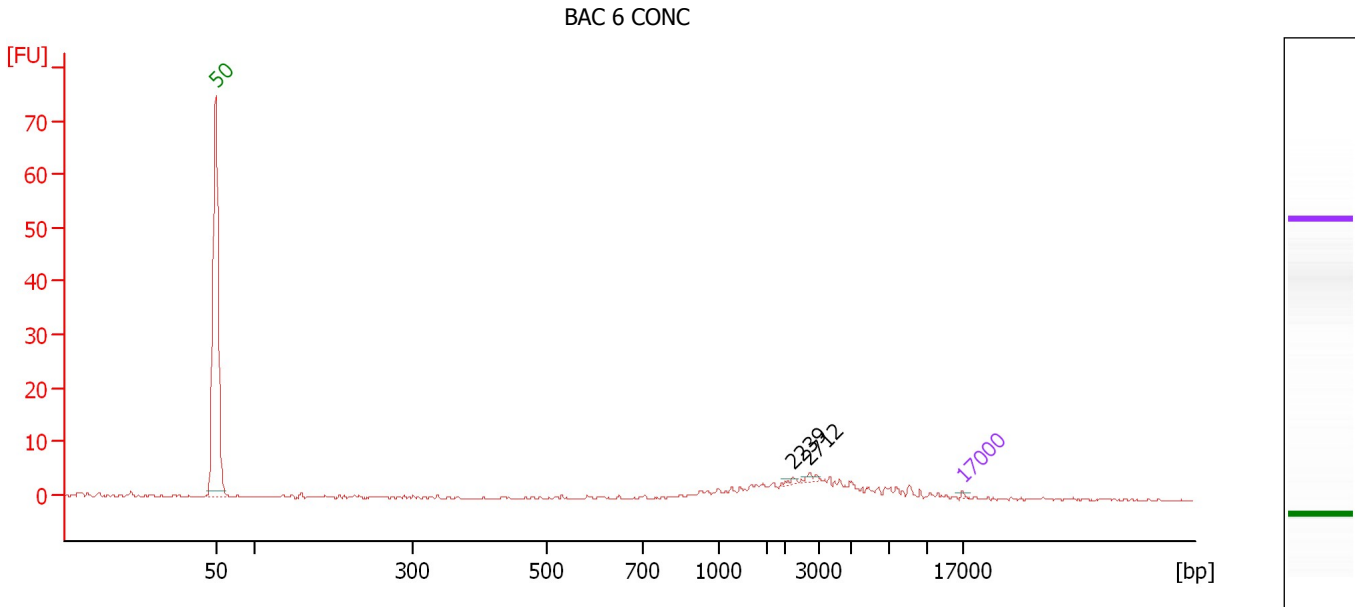
Peak table for sample 3 : BAC 5 CONC

Peak	Size [bp]	Conc. [ng/μl]	Molarity [nmol/l]	Observations
1	50	8.30	251.5	Lower Marker
2	5,429	36.60	10.2	
3	17,000	4.20	0.4	Upper Marker

Assay Class: DNA 12000
Data Path: C:\...ents and Settings\Bioanalyzer\2012-07-10\2012-07-10_001.xad

Created: 7/10/2012 8:49:09 AM
Modified: 7/10/2012 3:57:11 PM

Electropherogram Summary Continued ...



Setpoint Deviations for sample 4 : BAC 6 CONC

Height Threshold [FU] : 1

Overall Results for sample 4 : BAC 6 CONC

Number of peaks found: 2

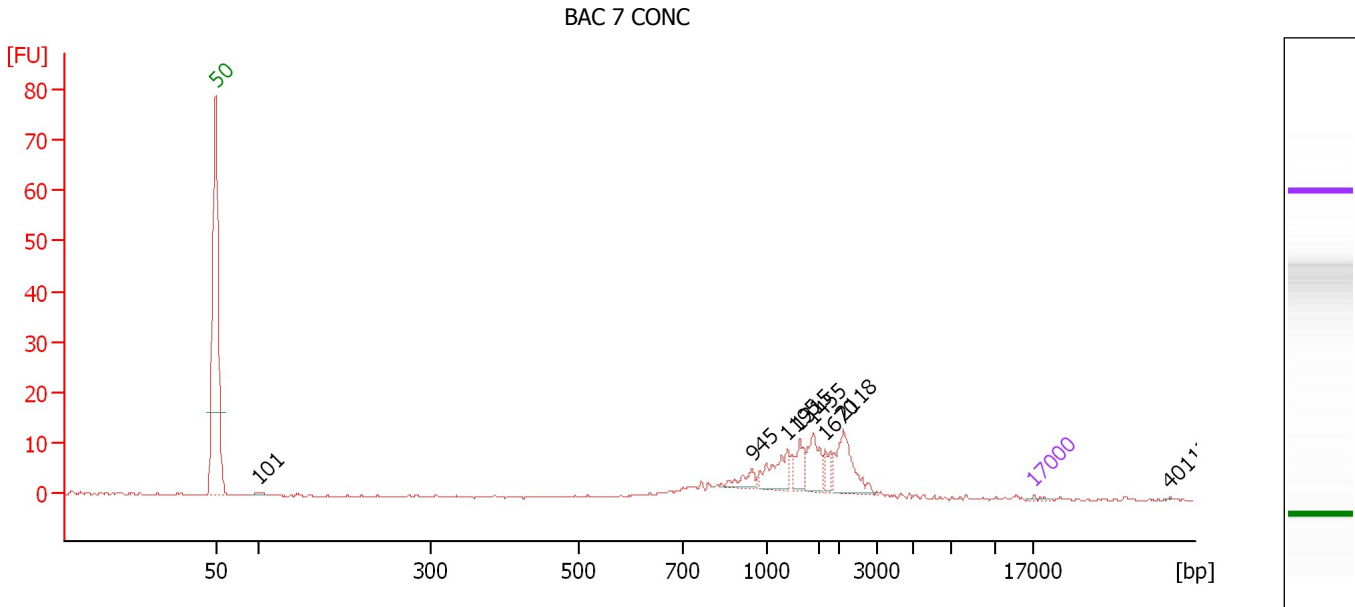
Peak table for sample 4 : BAC 6 CONC

Peak	Size [bp]	Conc. [ng/μl]	Molarity [nmol/l]	Observations
1	50	8.30	251.5	Lower Marker
2	2,239	12.04	8.1	
3	2,712	17.94	10.0	
4	17,000	4.20	0.4	Upper Marker

Assay Class: DNA 12000
 Data Path: C:\...ents and Settings\Bioanalyzer\2012-07-10\2012-07-10_001.xad

Created: 7/10/2012 8:49:09 AM
 Modified: 7/10/2012 3:57:11 PM

Electropherogram Summary Continued ...



Setpoint Deviations for sample 5 : BAC 7 CONC

Height Threshold [FU] : 0.2

Overall Results for sample 5 : BAC 7 CONC

Number of peaks found: 7

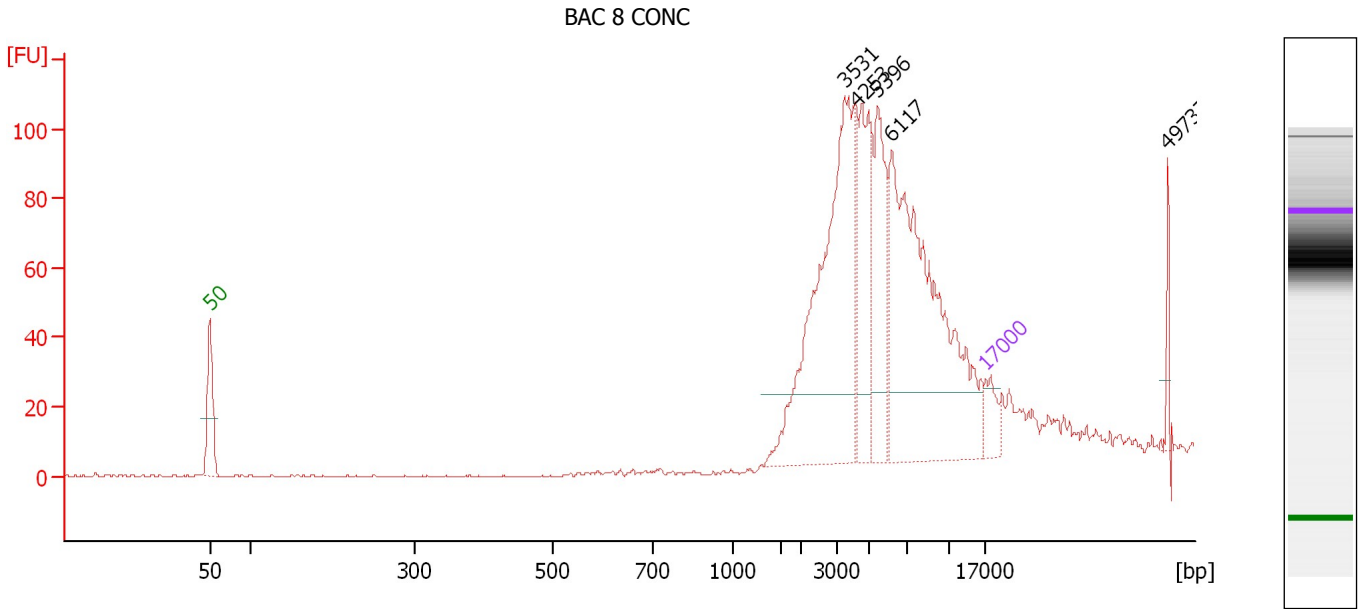
Peak table for sample 5 : BAC 7 CONC

Peak	Size [bp]	Conc. [ng/μl]	Molarity [nmol/l]	Observations
1	50	8.30	251.5	Lower Marker
2	101	4.26	64.2	
3	945	27.61	44.3	
4	1,195	65.08	82.5	
5	1,315	40.93	47.2	
6	1,455	66.12	68.8	
7	1,670	22.64	20.5	
8	2,118	94.81	67.8	
9	17,000	4.20	0.4	Upper Marker
10	40,113	0.00	0.0	

Assay Class: DNA 12000
Data Path: C:\...ents and Settings\Bioanalyzer\2012-07-10\2012-07-10_001.xad

Created: 7/10/2012 8:49:09 AM
Modified: 7/10/2012 3:57:11 PM

Electropherogram Summary Continued ...



Overall Results for sample 6 : BAC 8 CONC

Number of peaks found: 4

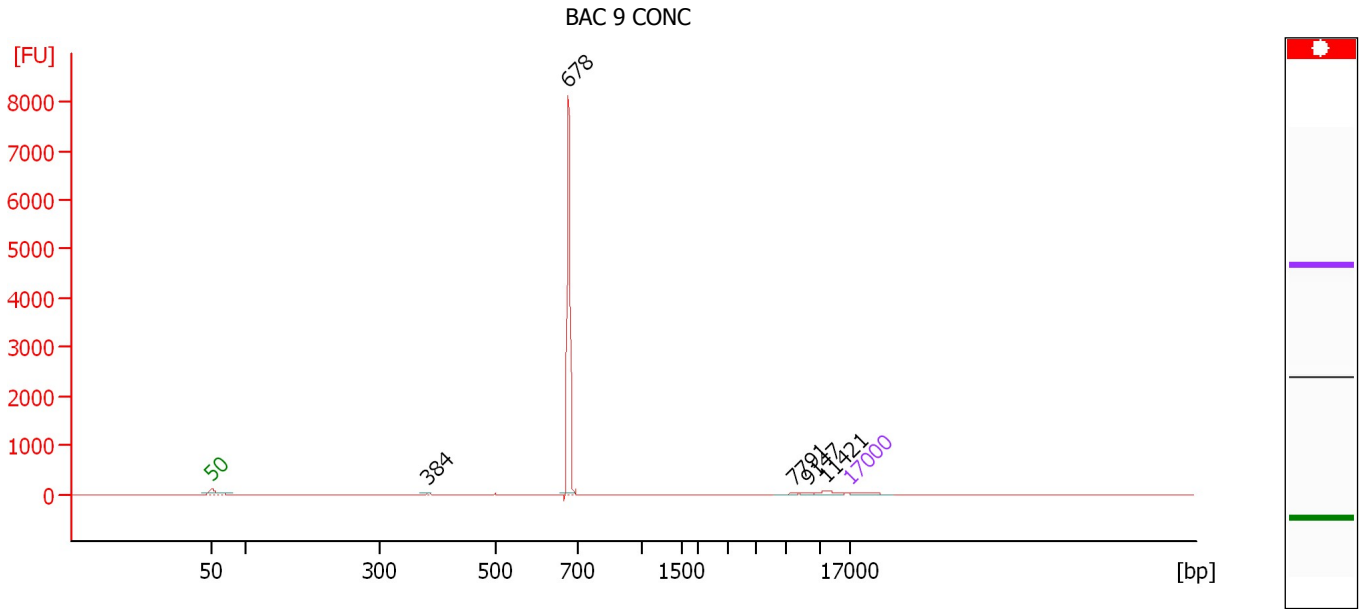
Peak table for sample 6 : BAC 8 CONC

Peak	Size [bp]	Conc. [ng/μl]	Molarity [nmol/l]	Observations
1	50	8.30	251.5	Lower Marker
2	3,531	51.64	22.2	
3	4,253	18.14	6.5	
4	5,396	17.64	5.0	
5	6,117	57.97	14.4	
6	17,000	4.20	0.4	Upper Marker
7	49,737	0.00	0.0	

Assay Class: DNA 12000
 Data Path: C:\...ents and Settings\Bioanalyzer\2012-07-10\2012-07-10_001.xad

Created: 7/10/2012 8:49:09 AM
 Modified: 7/10/2012 3:57:11 PM

Electropherogram Summary Continued ...



Overall Results for sample 7 : BAC 9 CONC

Number of peaks found: 5

Peak table for sample 7 : BAC 9 CONC

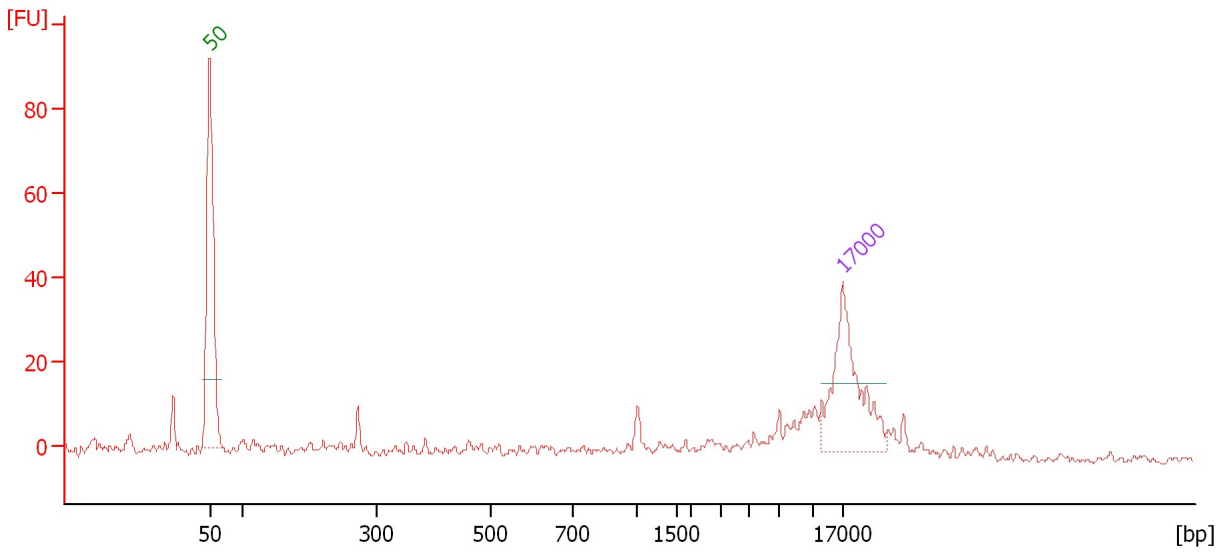
Peak	Size [bp]	Conc. [ng/μl]	Molarity [nmol/l]	Observations
1	50	8.30	251.5	Lower Marker
2	384	1.17	4.6	
3	678	147.83	330.2	
4	7,791	1.71	0.3	
5	9,147	1.48	0.2	
6	11,421	6.31	0.8	
7	17,000	4.20	0.4	Upper Marker

Assay Class: DNA 12000
Data Path: C:\...ents and Settings\Bioanalyzer\2012-07-10\2012-07-10_001.xad

Created: 7/10/2012 8:49:09 AM
Modified: 7/10/2012 3:57:11 PM

Electropherogram Summary Continued ...

BAC 11 CONC



Overall Results for sample 8 : BAC 11 CONC

Number of peaks found: 0

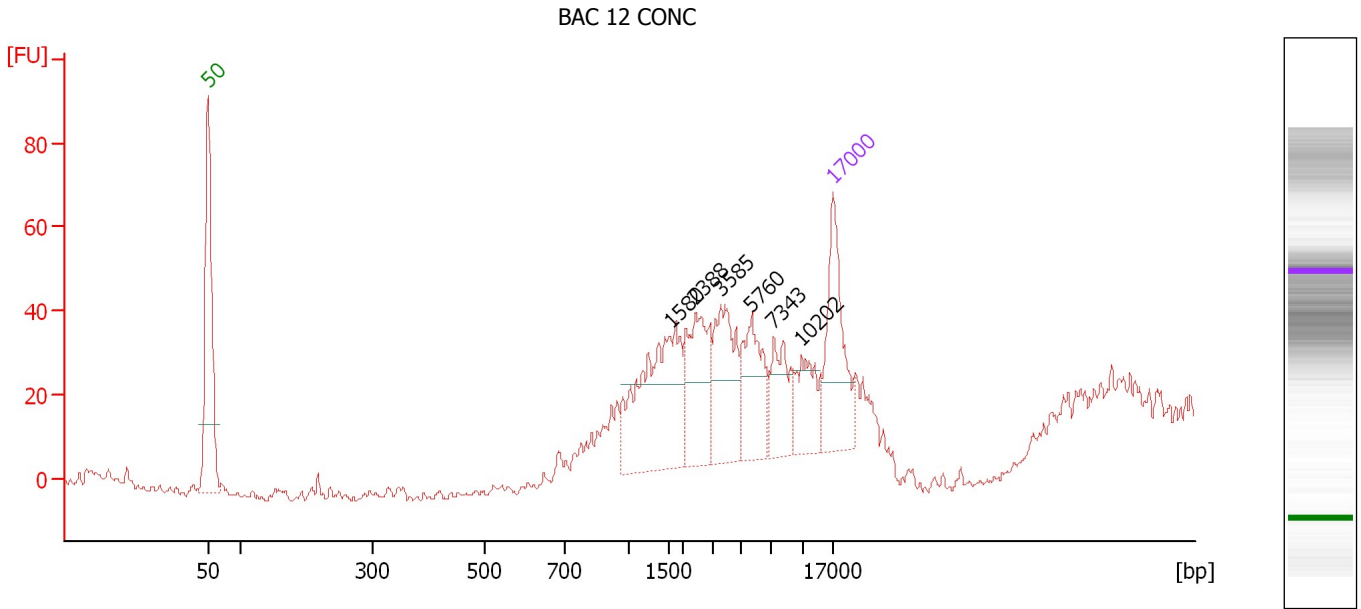
Peak table for sample 8 : BAC 11 CONC

Peak	Size [bp]	Conc. [ng/μl]	Molarity [nmol/l]	Observations
1	50	8.30	251.5	Lower Marker
2	17,000	4.20	0.4	Upper Marker

Assay Class: DNA 12000
 Data Path: C:\...ents and Settings\Bioanalyzer\2012-07-10\2012-07-10_001.xad

Created: 7/10/2012 8:49:09 AM
 Modified: 7/10/2012 3:57:11 PM

Electropherogram Summary Continued ...



Overall Results for sample 9 : BAC 12 CONC

Number of peaks found: 6

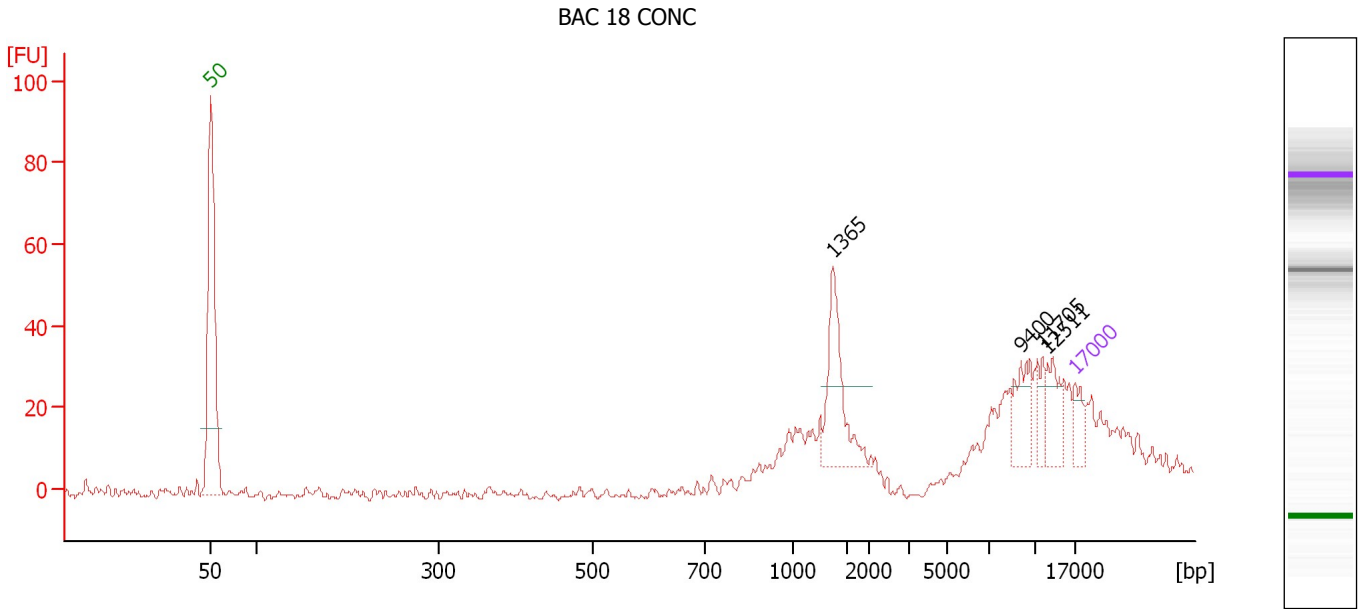
Peak table for sample 9 : BAC 12 CONC

Peak	Size [bp]	Conc. [ng/μl]	Molarity [nmol/l]	Observations
1	50	8.30	251.5	Lower Marker
2	1,580	7.05	6.8	
3	2,388	3.62	2.3	
4	3,585	3.95	1.7	
5	5,760	2.87	0.8	
6	7,343	2.31	0.5	
7	10,202	2.11	0.3	
8	17,000	4.20	0.4	Upper Marker

Assay Class: DNA 12000
 Data Path: C:\...ents and Settings\Bioanalyzer\2012-07-10\2012-07-10_001.xad

Created: 7/10/2012 8:49:09 AM
 Modified: 7/10/2012 3:57:11 PM

Electropherogram Summary Continued ...



Overall Results for sample 10 : BAC 18 CONC

Number of peaks found: 4

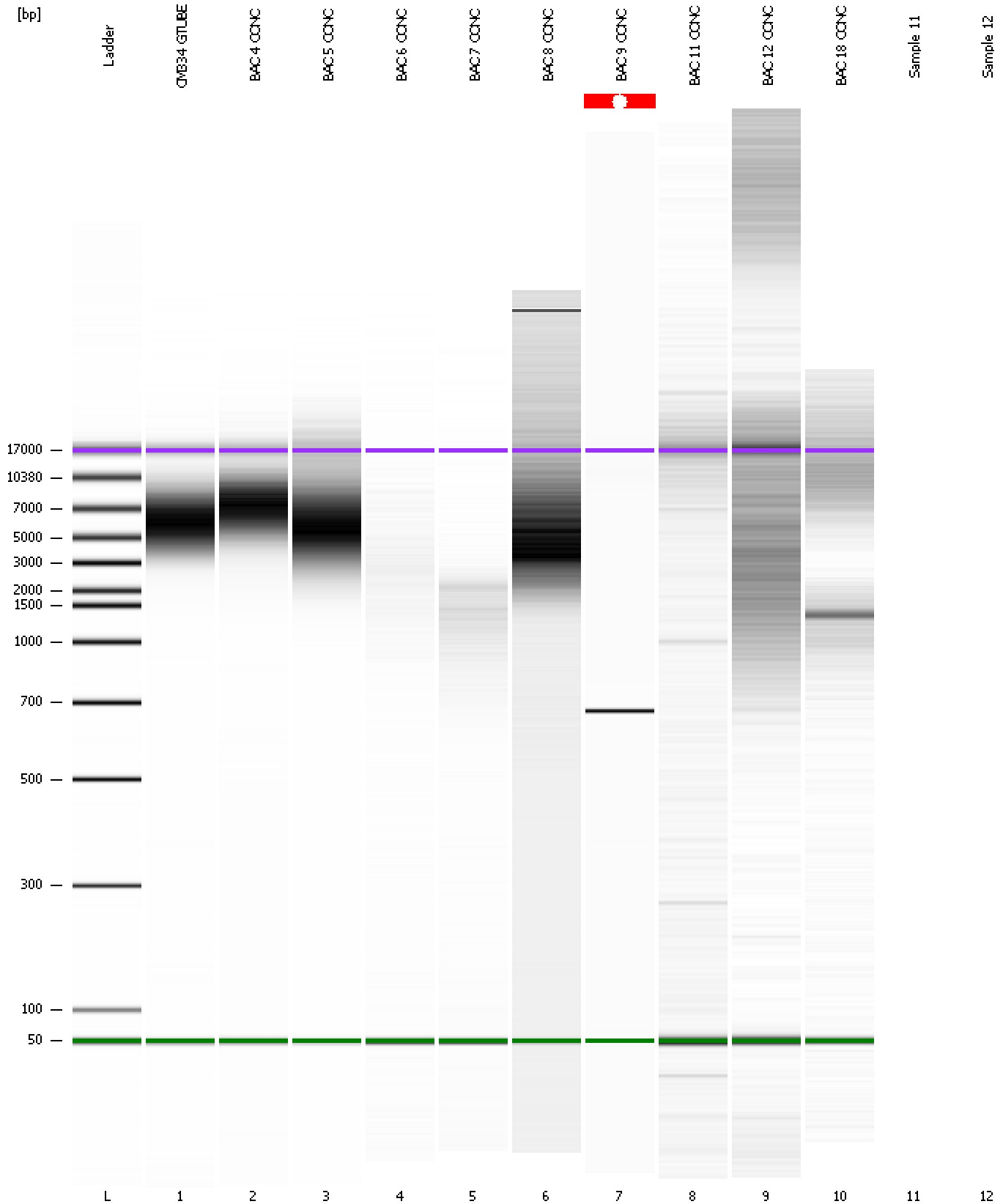
Peak table for sample 10 : BAC 18 CONC

Peak	Size [bp]	Conc. [ng/μl]	Molarity [nmol/l]	Observations
1	50	8.30	251.5	Lower Marker
2	1,365	18.15	20.1	
3	9,400	8.80	1.4	
4	11,705	3.80	0.5	
5	12,511	8.34	1.0	
6	17,000	4.20	0.4	Upper Marker

Assay Class: DNA 12000
Data Path: C:\...ents and Settings\Bioanalyzer\2012-07-10\2012-07-10_001.xad

Created: 7/10/2012 8:49:09 AM
Modified: 7/10/2012 3:57:11 PM

Gel Image



Assay Class: DNA 12000
Data Path: C:\...ents and Settings\Bioanalyzer\2012-07-10\2012-07-10_001.xad

Created: 7/10/2012 8:49:09 AM
Modified: 7/10/2012 3:57:11 PM

Invalid Samples

Sample 11 has not been run, no results available.

Sample 12 has not been run, no results available.

Assay Class: DNA 12000
 Data Path: C:\...ents and Settings\Bioanalyzer\2012-07-10\2012-07-10_001.xad

Created: 7/10/2012 8:49:09 AM
 Modified: 7/10/2012 3:57:11 PM

Run Logbook

Description	Number	Source	Category	Sub Category	Time	Time Zone	User	Host
Run ended on port 1 (Number of wells acquired: 11)		Instrument	Run		7/10/2012 9:19:54 AM	(GMT --07:00) Pacific Standard Time	UC Davis	D8XSMGH1
Instrument error occurred on port 1, Optical signal too high (1605h)	559	Instrument	Run	Sample 7	7/10/2012 9:12:56 AM	(GMT --07:00) Pacific Standard Time	UC Davis	D8XSMGH1
Run started on port 1 (File: C:\Documents and Settings\Bioanalyzer\2012-07-10\2012-07-10_001.xad)		Instrument	Run		7/10/2012 8:49:15 AM	(GMT --07:00) Pacific Standard Time	UC Davis	D8XSMGH1
Product Number : G2938B		Instrument	Run		7/10/2012 8:49:15 AM	(GMT --07:00) Pacific Standard Time	UC Davis	D8XSMGH1
Name :		Instrument	Run		7/10/2012 8:49:15 AM	(GMT --07:00) Pacific Standard Time	UC Davis	D8XSMGH1
Vendor : Agilent Technologies		Instrument	Run		7/10/2012 8:49:15 AM	(GMT --07:00) Pacific Standard Time	UC Davis	D8XSMGH1
Serial# : DE13701086		Instrument	Run		7/10/2012 8:49:15 AM	(GMT --07:00) Pacific Standard Time	UC Davis	D8XSMGH1
Firmware : C.01.069		Instrument	Run		7/10/2012 8:49:15 AM	(GMT --07:00) Pacific Standard Time	UC Davis	D8XSMGH1
Cartridge : Electrode		Instrument	Run		7/10/2012 8:49:15 AM	(GMT --07:00) Pacific Standard Time	UC Davis	D8XSMGH1