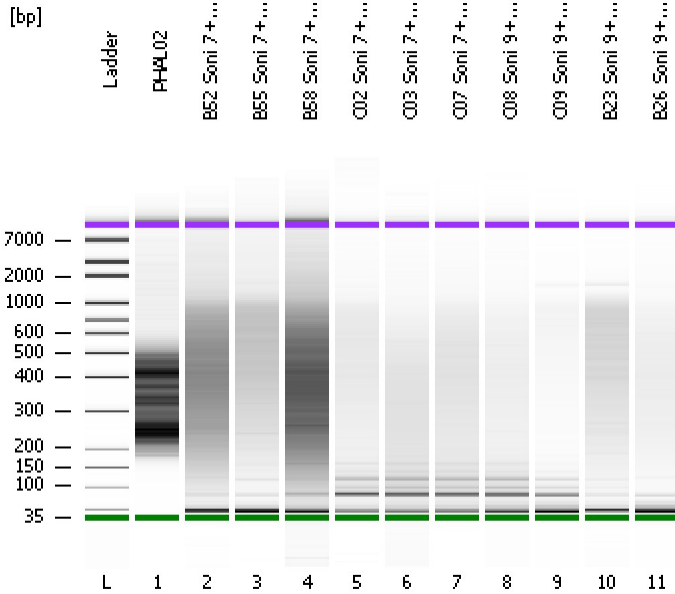


Assay Class: High Sensitivity DNA Assay
Data Path: C:\...ents and Settings\Bioanalyzer\2012-07-10\2012-07-10_003.xad

Created: 7/10/2012 11:17:15 AM
Modified: 7/10/2012 11:59:28 AM

Electrophoresis File Run Summary



Instrument Information:

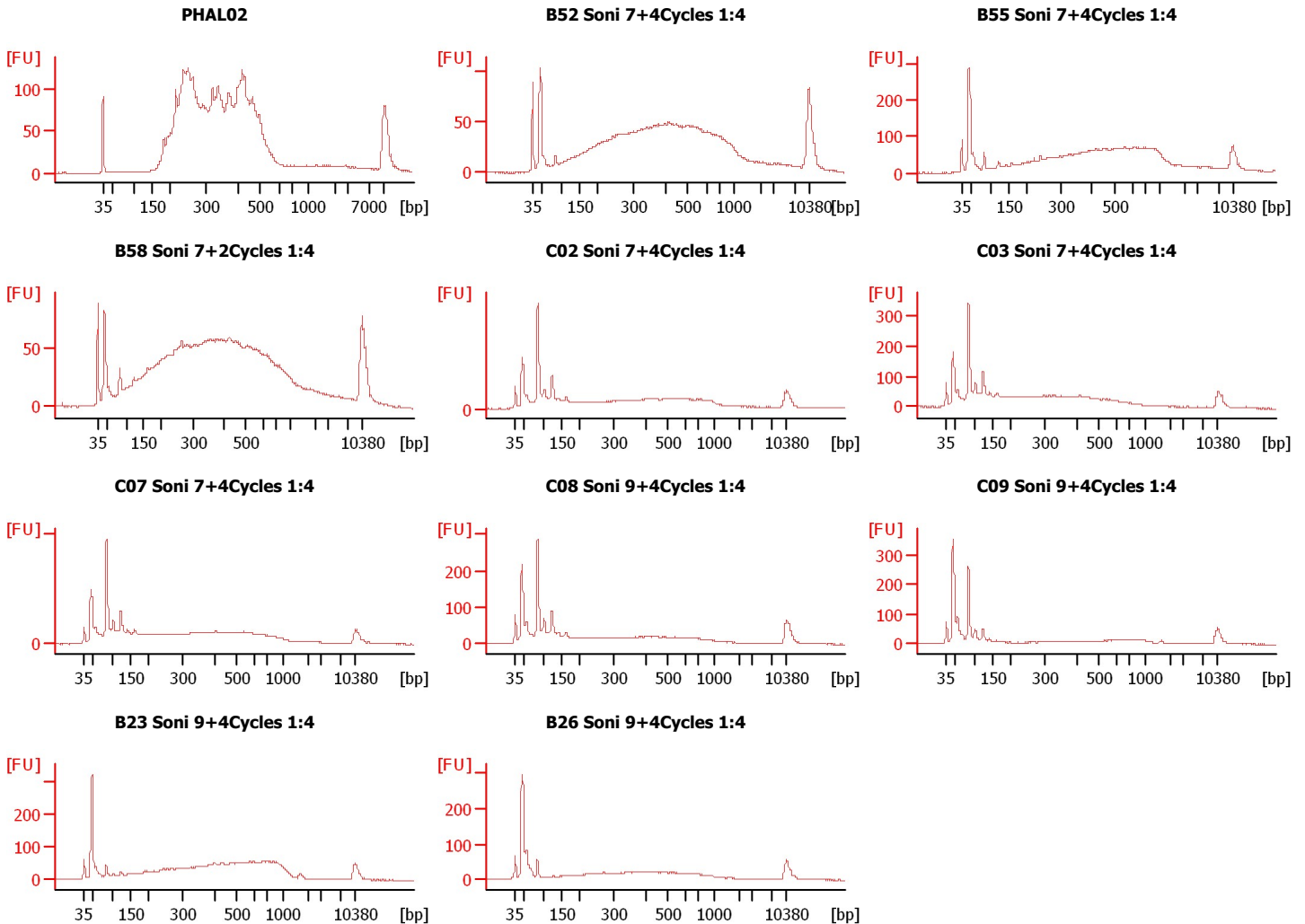
Instrument Name: DE13701086 Firmware: C.01.069
Serial#: DE13701086 Type: G2938B

Assay Information:

Assay Origin Path: C:\Program Files\Agilent\2100 bioanalyzer\2100 expert\assays\dsDNA\High Sensitivity DNA.xsy
Assay Class: High Sensitivity DNA Assay
Version: 1.03
Assay Comments: Copyright © 2003-2010 Agilent Technologies

Chip Information:

Chip Lot #:
Reagent Kit Lot #:
Chip Comments:



Assay Class: High Sensitivity DNA Assay
 Data Path: C:\...ents and Settings\Bioanalyzer\2012-07-10\2012-07-10_003.xad

Created: 7/10/2012 11:17:15 AM
 Modified: 7/10/2012 11:59:28 AM

Electrophoresis File Run Summary (Chip Summary)

Sample Name	Sample Comment	Rest. Digest	Status	Observation	Result Label	Result Color
PHAL02		<input type="checkbox"/>	✓			
B52 Soni 7+4Cycles 1:4		<input type="checkbox"/>	✓			
B55 Soni 7+4Cycles 1:4		<input type="checkbox"/>	✓			
B58 Soni 7+2Cycles 1:4		<input type="checkbox"/>	✓			
C02 Soni 7+4Cycles 1:4		<input type="checkbox"/>	✓			
C03 Soni 7+4Cycles 1:4		<input type="checkbox"/>	✓			
C07 Soni 7+4Cycles 1:4		<input type="checkbox"/>	✓			
C08 Soni 9+4Cycles 1:4		<input type="checkbox"/>	✓			
C09 Soni 9+4Cycles 1:4		<input type="checkbox"/>	✓			
B23 Soni 9+4Cycles 1:4		<input type="checkbox"/>	✓			
B26 Soni 9+4Cycles 1:4		<input type="checkbox"/>	✓			
Ladder		<input type="checkbox"/>	✓			

Chip Lot #

Reagent Kit Lot #

Chip Comments :

Assay Class: High Sensitivity DNA Assay
Data Path: C:\...ents and Settings\Bioanalyzer\2012-07-10\2012-07-10_003.xad

Created: 7/10/2012 11:17:15 AM
Modified: 7/10/2012 11:59:28 AM

Electrophoresis Assay Details

General Analysis Settings

Number of Available Sample and Ladder Wells (Max.) : 12
Minimum Visible Range [s] : 32
Maximum Visible Range [s] : 138
Start Analysis Time Range [s] : 33
End Analysis Time Range [s] : 137.5
Ladder Concentration [pg/μl] : 1950
Uses Standard Area for Ladder Fragments
Lower Marker Concentration [pg/μl] : 125
Upper Marker Concentration [pg/μl] : 75
Used Upper Marker for Quantitation
Standard Curve Fit is Point to Point
Show Data Aligned to Lower and Upper Marker

Integrator Settings

Integration Start Time [s] : 33.05
Integration End Time [s] : 137
Slope Threshold : 0.8
Height Threshold [FU] : 5
Area Threshold : 0.1
Width Threshold [s] : 0.6
Baseline Plateau [s] : 0.5

Filter Settings

Filter Width [s] : 0.5
Polynomial Order : 4

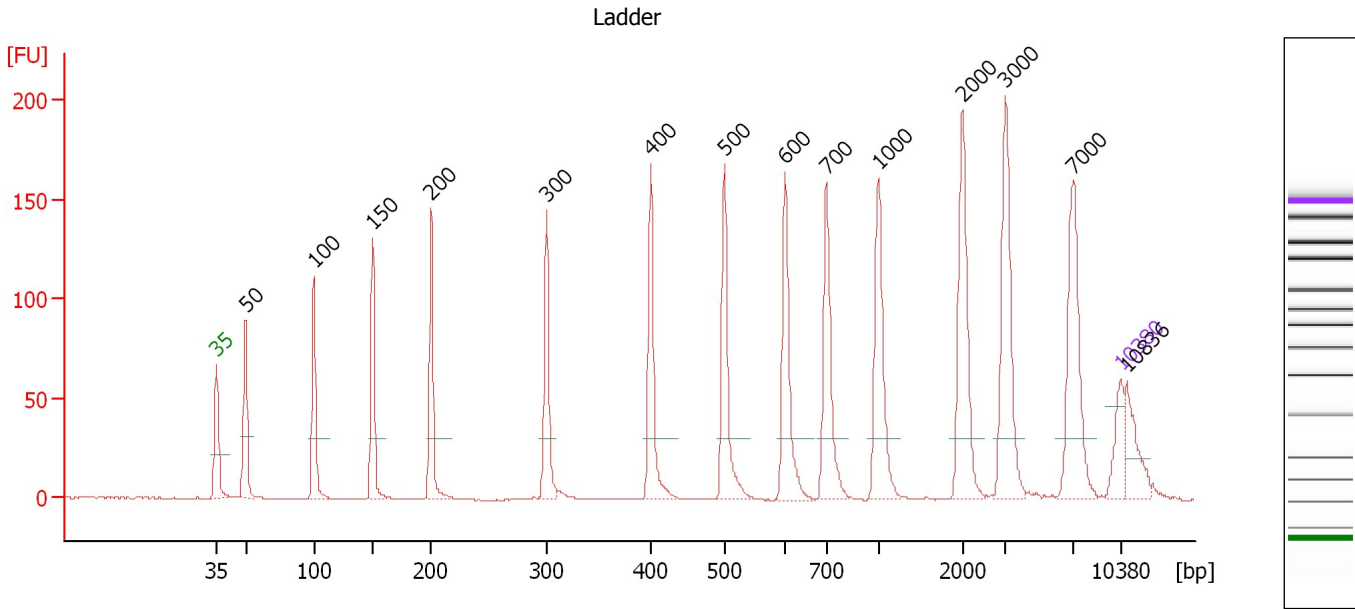
Ladder

Ladder Peak	Size	Area
1	35	160
2	50	210
3	100	208
4	150	221
5	200	242
6	300	270
7	400	305
8	500	306
9	600	336
10	700	321
11	1000	366
12	2000	413
13	3000	411
14	7000	400
15	10380	214

Assay Class: High Sensitivity DNA Assay
 Data Path: C:\...ents and Settings\Bioanalyzer\2012-07-10\2012-07-10_003.xad

Created: 7/10/2012 11:17:15 AM
 Modified: 7/10/2012 11:59:28 AM

Electropherogram Summary



Overall Results for Ladder

Noise: 0.1

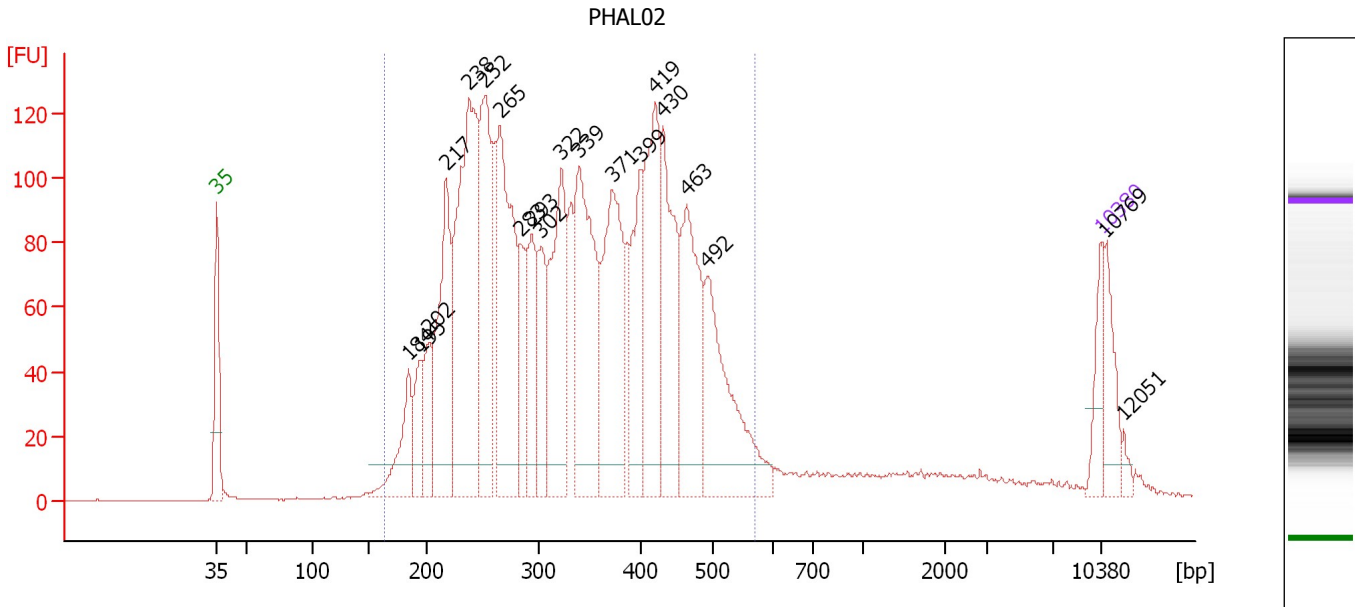
Peak table for Ladder

Peak	Size [bp]	Conc. [pg/μl]	Molarity [pmol/l]	Observations
1	35	125.00	5,411.3	Lower Marker
2	50	150.00	4,545.5	Ladder Peak
3	100	150.00	2,272.7	Ladder Peak
4	150	150.00	1,515.2	Ladder Peak
5	200	150.00	1,136.4	Ladder Peak
6	300	150.00	757.6	Ladder Peak
7	400	150.00	568.2	Ladder Peak
8	500	150.00	454.5	Ladder Peak
9	600	150.00	378.8	Ladder Peak
10	700	150.00	324.7	Ladder Peak
11	1,000	150.00	227.3	Ladder Peak
12	2,000	150.00	113.6	Ladder Peak
13	3,000	150.00	75.8	Ladder Peak
14	7,000	150.00	32.5	Ladder Peak
15	10,380	75.00	10.9	Upper Marker
16	10,836	0.00	0.0	

Assay Class: High Sensitivity DNA Assay
 Data Path: C:\...ents and Settings\Bioanalyzer\2012-07-10\2012-07-10_003.xad

Created: 7/10/2012 11:17:15 AM
 Modified: 7/10/2012 11:59:28 AM

Electropherogram Summary Continued ...



Setpoint Deviations for sample 1 : PHAL02

Height Threshold [FU] : 10

Overall Results for sample 1 : PHAL02

Number of peaks found: 20 Corr. Area 1: 3,337.0
 Noise: 0.2

Peak table for sample 1 : PHAL02

Peak	Size [bp]	Conc. [pg/μl]	Molarity [pmol/l]	Observations
1	35	125.00	5,411.3	Lower Marker
2	184	201.07	1,653.0	
3	195	132.38	1,028.5	
4	202	135.63	1,017.2	
5	217	466.23	3,252.5	
6	238	892.41	5,691.7	
7	252	462.46	2,783.0	
8	265	649.80	3,714.6	
9	283	151.49	812.3	
10	293	217.63	1,123.6	
11	302	215.57	1,080.8	
12	322	439.27	2,070.0	
13	339	551.04	2,464.6	
14	371	491.47	2,006.4	
15	399	254.78	967.9	
16	419	408.80	1,477.9	
17	430	364.79	1,284.7	
18	463	390.96	1,279.8	
19	492	426.39	1,313.7	
20	10,380	75.00	10.9	Upper Marker
21	10,769	0.00	0.0	
22	12,051	0.00	0.0	

Assay Class: High Sensitivity DNA Assay
Data Path: C:\...ents and Settings\Bioanalyzer\2012-07-10\2012-07-10_003.xad

Created: 7/10/2012 11:17:15 AM
Modified: 7/10/2012 11:59:28 AM

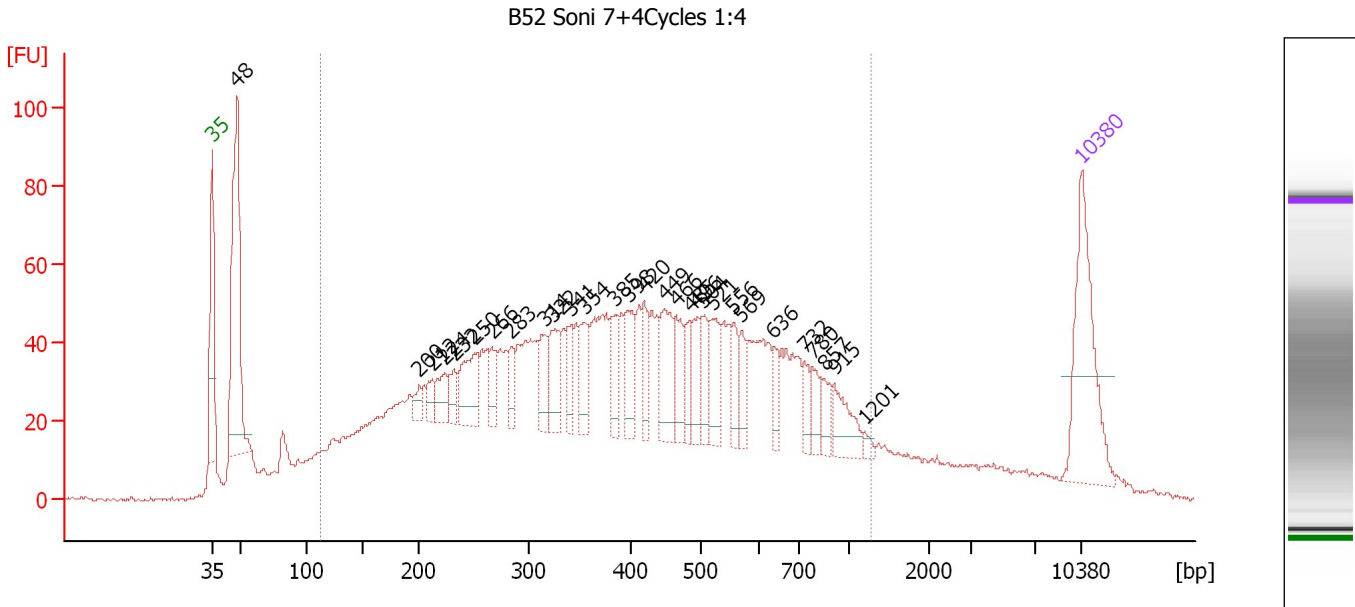
Electropherogram Summary Continued ...**... Region table for sample 1 : PHAL02**

From [bp]	To [bp]	Average Size [bp]	Molarity [pmol/l]	Conc. [pg/μl]	Corr. Area	% of Total	Size distribution in CV [%]	Co lor
163	571	338	36,595.7	7,229.75	3,337.0	92	27.8	

Assay Class: High Sensitivity DNA Assay
 Data Path: C:\...ents and Settings\Bioanalyzer\2012-07-10\2012-07-10_003.xad

Created: 7/10/2012 11:17:15 AM
 Modified: 7/10/2012 11:59:28 AM

Electropherogram Summary Continued ...



Overall Results for sample 2 : B52 Soni 7+4Cycles 1:4

Number of peaks found: 29 Corr. Area 1: 2,243.7
 Noise: 0.5

Peak table for sample 2 : B52 Soni 7+4Cycles 1:4

Peak	Size [bp]	Conc. [pg/μl]	Molarity [pmol/l]	Observations
1	35	125.00	5,411.3	Lower Marker
2	48	206.86	6,485.2	
3	200	10.80	81.7	
4	212	12.35	88.1	
5	224	22.13	149.8	
6	232	16.02	104.6	
7	250	46.43	281.1	
8	266	19.70	112.1	
9	283	18.06	96.7	
10	314	29.12	140.4	
11	322	36.75	172.8	
12	341	21.04	93.4	
13	354	27.73	118.5	
14	385	26.59	104.7	
15	398	33.48	127.5	
16	420	22.42	80.9	
17	449	43.86	148.0	
18	466	29.10	94.7	
19	485	19.35	60.4	
20	496	24.40	74.5	
21	504	23.16	69.6	
22	521	29.51	85.9	
23	556	17.50	47.7	
24	569	17.36	46.2	
25	636	14.00	33.3	
26	732	14.64	30.3	

Assay Class: High Sensitivity DNA Assay
 Data Path: C:\...ents and Settings\Bioanalyzer\2012-07-10\2012-07-10_003.xad

Created: 7/10/2012 11:17:15 AM
 Modified: 7/10/2012 11:59:28 AM

Electropherogram Summary Continued ...

... Peak table for sample 2 : B52 Soni 7+4Cycles 1:4

Peak	Size [bp]	Conc. [pg/μl]	Molarity [pmol/l]	Observations
27	780	15.81	30.7	
28	857	13.48	23.8	
29	915	26.02	43.1	
30	1,201	4.27	5.4	
31	10,380	75.00	10.9	Upper Marker

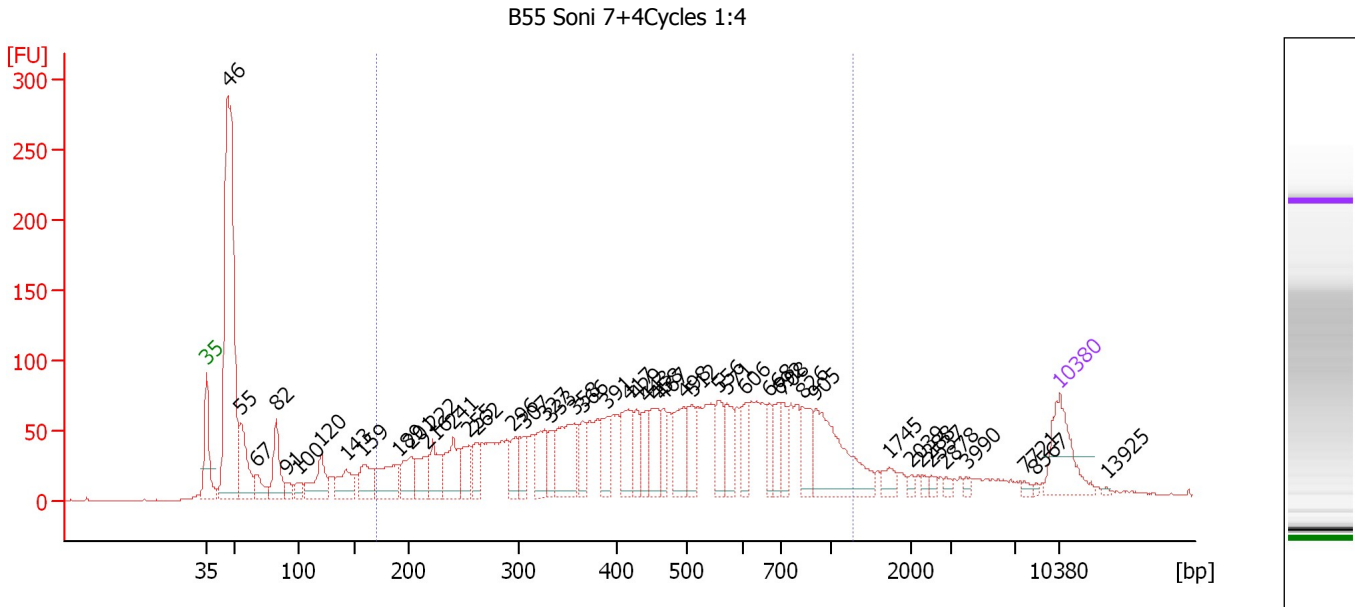
Region table for sample 2 : B52 Soni 7+4Cycles 1:4

From [bp]	To [bp]	Average Size [bp]	Molarity [pmol/l]	Conc. [pg/μl]	Corr. Area	% of Total	Size distribution in CV [%]	Color
113	1,284	433	10,741.4	2,129.85	2,243.7	82	49.2	

Assay Class: High Sensitivity DNA Assay
 Data Path: C:\...ents and Settings\Bioanalyzer\2012-07-10\2012-07-10_003.xad

Created: 7/10/2012 11:17:15 AM
 Modified: 7/10/2012 11:59:28 AM

Electropherogram Summary Continued ...



Overall Results for sample 3 : B55 Soni 7+4Cycles 1:4

Number of peaks found: 47 Corr. Area 1: 2,662.6
 Noise: 0.4

Peak table for sample 3 : B55 Soni 7+4Cycles 1:4

Peak	Size [bp]	Conc. [pg/μl]	Molarity [pmol/l]	Observations
1	35	125.00	5,411.3	Lower Marker
2	46	767.71	25,133.0	
3	55	121.82	3,354.0	
4	67	39.59	889.2	
5	82	94.42	1,736.6	
6	91	19.27	320.5	
7	100	22.40	340.1	
8	120	84.49	1,062.6	
9	143	61.62	654.5	
10	159	66.41	634.6	
11	189	83.69	669.4	
12	201	64.54	485.3	
13	216	59.37	417.0	
14	222	63.92	437.0	
15	241	82.80	521.1	
16	255	52.28	310.6	
17	262	43.19	249.4	
18	296	43.46	222.6	
19	307	45.97	227.1	
20	327	64.26	298.0	
21	333	36.51	166.3	
22	358	112.44	476.4	
23	366	46.47	192.5	
24	391	52.80	204.8	
25	417	72.73	264.5	
26	429	45.03	159.1	

Assay Class: High Sensitivity DNA Assay
 Data Path: C:\...ents and Settings\Bioanalyzer\2012-07-10\2012-07-10_003.xad


Created: 7/10/2012 11:17:15 AM
 Modified: 7/10/2012 11:59:28 AM

Electropherogram Summary Continued ...

... Peak table for sample 3 : B55 Soni 7+4Cycles 1:4

Peak	Size [bp]	Conc. [pg/µl]	Molarity [pmol/l]	Observations
27	443	47.18	161.5	
28	458	63.21	209.1	
29	467	38.24	124.0	
30	498	75.22	228.8	
31	512	47.22	139.8	
32	556	51.31	139.8	
33	571	51.22	135.9	
34	606	39.44	98.7	
35	668	34.25	77.7	
36	692	37.23	81.5	
37	708	34.36	73.5	
38	826	56.07	102.8	
39	905	153.17	256.5	
40	1,745	17.42	15.1	
41	2,039	5.35	4.0	
42	2,288	5.13	3.4	
43	2,537	5.67	3.4	
44	2,878	5.82	3.1	
45	3,990	4.82	1.8	
46	7,721	4.60	0.9	
47	8,567	2.84	0.5	
48	10,380	75.00	10.9	Upper Marker
49	13,925	0.00	0.0	

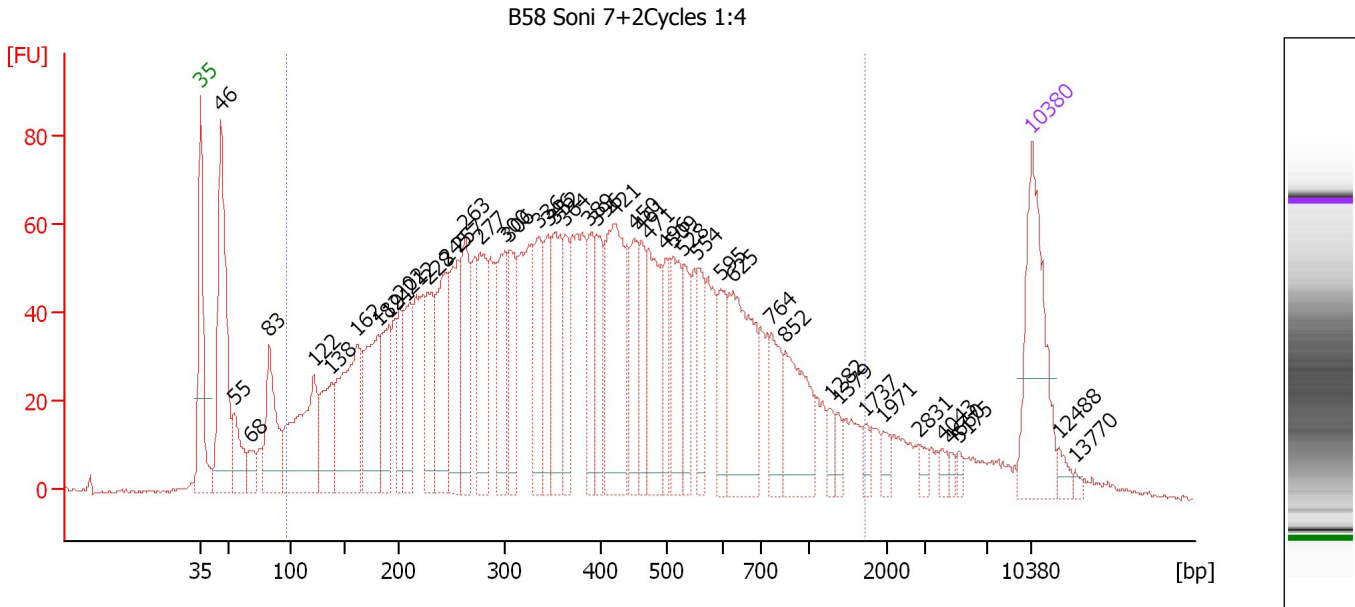
Region table for sample 3 : B55 Soni 7+4Cycles 1:4

From [bp]	To [bp]	Average Size [bp]	Molarity [pmol/l]	Conc. [pg/µl]	Corr. Area	% of Total	Size distribution in CV [%]	Color
170	1,270	497	9,464.6	2,313.84	2,662.6	67	45.0	

Assay Class: High Sensitivity DNA Assay
 Data Path: C:\...ents and Settings\Bioanalyzer\2012-07-10\2012-07-10_003.xad

Created: 7/10/2012 11:17:15 AM
 Modified: 7/10/2012 11:59:28 AM

Electropherogram Summary Continued ...



Overall Results for sample 4 : B58 Soni 7+2Cycles 1:4

Number of peaks found: 46 Corr. Area 1: 2,949.2
 Noise: 0.5

Peak table for sample 4 : B58 Soni 7+2Cycles 1:4

Peak	Size [bp]	Conc. [pg/μl]	Molarity [pmol/l]	Observations
1	35	125.00	5,411.3	Lower Marker
2	46	191.60	6,313.1	
3	55	44.82	1,228.0	
4	68	17.59	389.2	
5	83	84.33	1,540.4	
6	122	131.20	1,633.2	
7	138	65.56	719.6	
8	162	134.58	1,260.2	
9	182	96.38	804.1	
10	191	52.30	414.9	
11	202	42.96	322.4	
12	212	56.43	403.3	
13	228	60.98	405.1	
14	245	89.86	555.1	
15	257	75.39	444.7	
16	263	71.54	411.5	
17	277	67.60	369.7	
18	300	64.25	324.3	
19	306	57.16	283.2	
20	336	59.22	266.8	
21	346	48.72	213.5	
22	352	71.21	306.7	
23	364	40.72	169.7	
24	389	47.50	185.0	
25	396	46.39	177.6	
26	421	117.59	423.4	

Assay Class: High Sensitivity DNA Assay
 Data Path: C:\...ents and Settings\Bioanalyzer\2012-07-10\2012-07-10_003.xad


Created: 7/10/2012 11:17:15 AM
 Modified: 7/10/2012 11:59:28 AM

Electropherogram Summary Continued ...

... Peak table for sample 4 : B58 Soni 7+2Cycles 1:4

Peak	Size [bp]	Conc. [pg/µl]	Molarity [pmol/l]	Observations
27	450	48.90	164.7	
28	461	34.60	113.7	
29	471	74.84	240.6	
30	496	34.02	103.8	
31	509	54.83	163.2	
32	528	33.64	96.5	
33	554	33.97	92.9	
34	595	32.85	83.7	
35	625	98.01	237.5	
36	764	31.67	62.8	
37	852	61.55	109.5	
38	1,282	8.57	10.1	
39	1,379	7.37	8.1	
40	1,737	6.52	5.7	
41	1,971	6.40	4.9	
42	2,831	6.18	3.3	
43	4,043	4.95	1.9	
44	4,660	3.40	1.1	
45	5,175	3.30	1.0	
46	10,380	75.00	10.9	Upper Marker
47	12,488	0.00	0.0	
48	13,770	0.00	0.0	

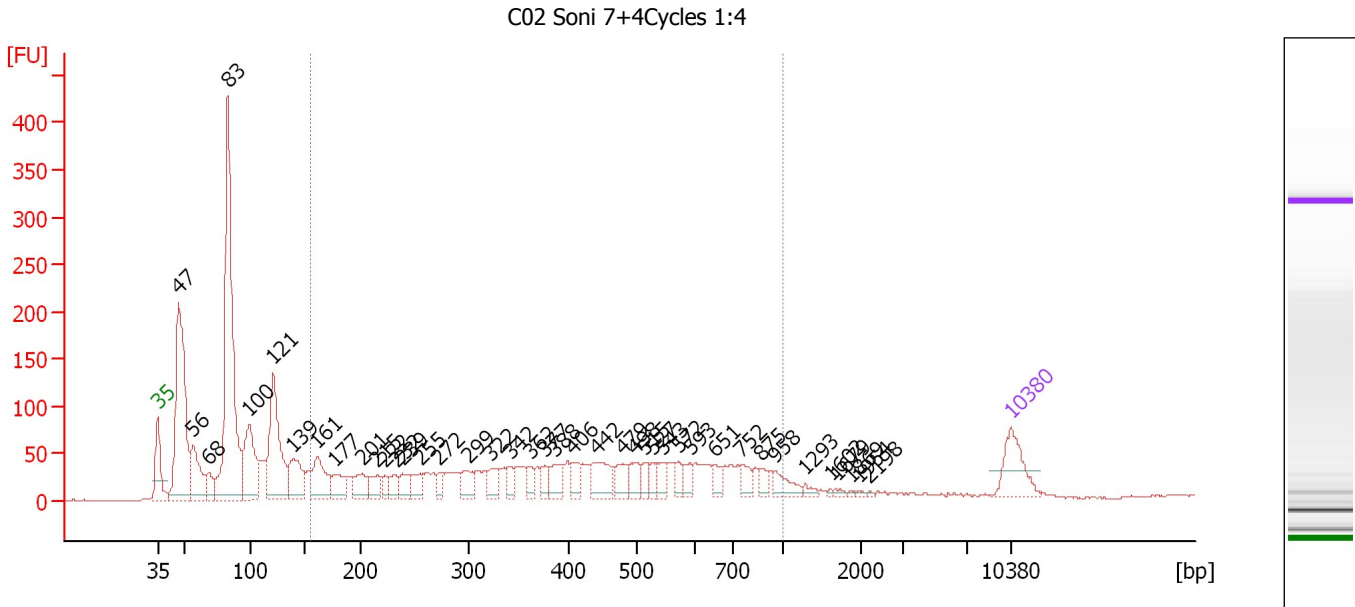
Region table for sample 4 : B58 Soni 7+2Cycles 1:4

From [bp]	To [bp]	Average Size [bp]	Molarity [pmol/l]	Conc. [pg/µl]	Corr. Area	% of Total	Size distribution in CV [%]	Color
96	1,735	436	14,265.4	2,625.48	2,949.2	87	61.5	

Assay Class: High Sensitivity DNA Assay
 Data Path: C:\...ents and Settings\Bioanalyzer\2012-07-10\2012-07-10_003.xad

Created: 7/10/2012 11:17:15 AM
 Modified: 7/10/2012 11:59:28 AM

Electropherogram Summary Continued ...



Overall Results for sample 5 : C02 Soni 7+4Cycles 1:4

Number of peaks found: 41 Corr. Area 1: 1,674.2
 Noise: 0.8

Peak table for sample 5 : C02 Soni 7+4Cycles 1:4

Peak	Size [bp]	Conc. [pg/μl]	Molarity [pmol/l]	Observations
1	35	125.00	5,411.3	Lower Marker
2	47	588.50	19,171.2	
3	56	161.63	4,351.3	
4	68	49.14	1,088.0	
5	83	888.47	16,183.4	
6	100	234.58	3,566.1	
7	121	333.45	4,164.4	
8	139	130.86	1,426.5	
9	161	128.11	1,204.1	
10	177	65.47	559.3	
11	201	64.73	487.7	
12	215	45.28	319.1	
13	222	27.50	187.5	
14	232	35.40	230.7	
15	239	44.70	283.8	
16	255	45.58	271.3	
17	272	27.02	150.5	
18	299	56.03	284.1	
19	322	39.70	186.5	
20	342	27.66	122.6	
21	362	26.54	111.0	
22	377	29.88	120.1	
23	388	50.02	195.5	
24	406	33.72	125.9	
25	442	79.95	274.1	
26	479	46.46	146.9	

Assay Class: High Sensitivity DNA Assay
 Data Path: C:\...ents and Settings\Bioanalyzer\2012-07-10\2012-07-10_003.xad

Created: 7/10/2012 11:17:15 AM
 Modified: 7/10/2012 11:59:28 AM

Electropherogram Summary Continued ...

... Peak table for sample 5 : C02 Soni 7+4Cycles 1:4

Peak	Size [bp]	Conc. [pg/µl]	Molarity [pmol/l]	Observations
27	498	41.88	127.5	
28	515	27.74	81.7	
29	527	23.69	68.1	
30	543	28.84	80.5	
31	572	24.12	63.9	
32	593	25.61	65.5	
33	651	27.20	63.3	
34	752	31.51	63.5	
35	875	19.21	33.3	
36	958	38.00	60.1	
37	1,293	10.88	12.7	
38	1,602	3.46	3.3	
39	1,679	5.83	5.3	
40	1,869	2.78	2.3	
41	1,954	3.40	2.6	
42	2,198	2.21	1.5	
43	▶ 10,380	75.00	10.9	Upper Marker

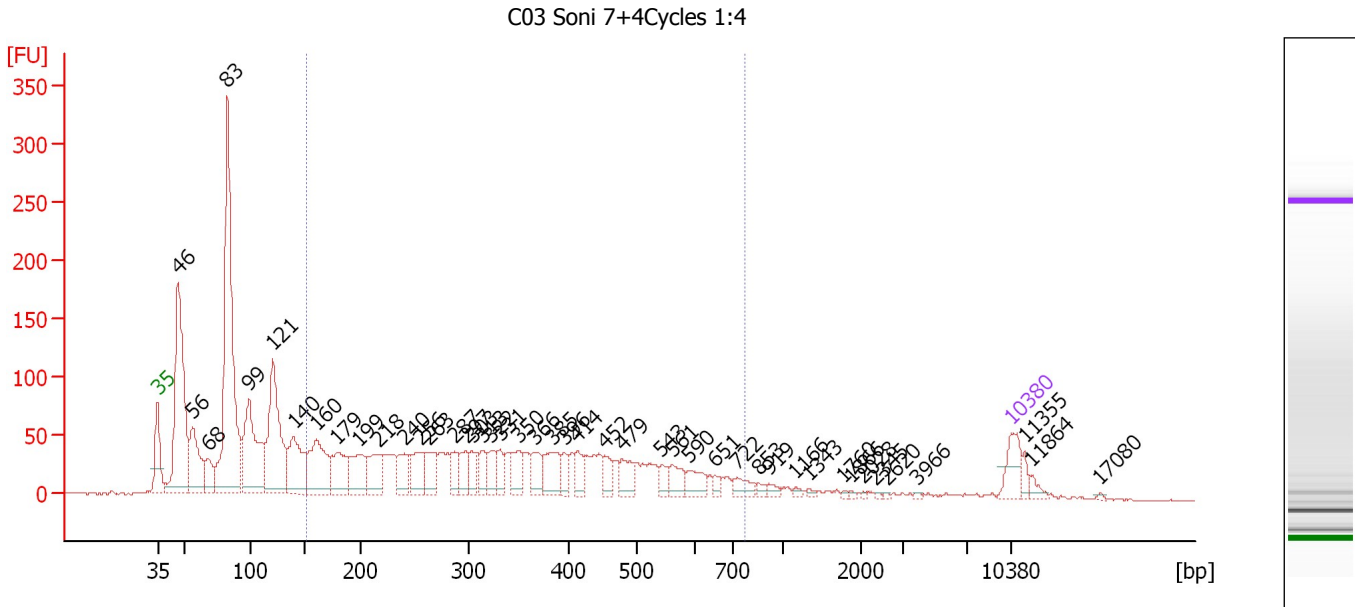
Region table for sample 5 : C02 Soni 7+4Cycles 1:4

From [bp]	To [bp]	Average Size [bp]	Molarity [pmol/l]	Conc. [pg/µl]	Corr. Area	% of Total	Size distribution in CV [%]	Color
156	1,000	435	7,861.2	1,641.97	1,674.2	46	44.7	■

Assay Class: High Sensitivity DNA Assay
 Data Path: C:\...ents and Settings\Bioanalyzer\2012-07-10\2012-07-10_003.xad

Created: 7/10/2012 11:17:15 AM
 Modified: 7/10/2012 11:59:28 AM

Electropherogram Summary Continued ...



Overall Results for sample 6 : C03 Soni 7+4Cycles 1:4

Number of peaks found: 45 Corr. Area 1: 1,700.1
 Noise: 0.5

Peak table for sample 6 : C03 Soni 7+4Cycles 1:4


Peak	Size [bp]	Conc. [pg/μl]	Molarity [pmol/l]	Observations
1	35	125.00	5,411.3	Lower Marker
2	46	856.74	28,242.6	
3	56	279.73	7,628.9	
4	68	101.68	2,273.3	
5	83	1,268.84	23,275.3	
6	99	496.04	7,578.6	
7	121	541.25	6,785.5	
8	140	272.49	2,956.7	
9	160	296.03	2,795.6	
10	179	180.99	1,534.4	
11	199	164.59	1,256.2	
12	218	158.31	1,102.3	
13	240	94.51	595.8	
14	256	122.54	725.7	
15	263	107.15	617.1	
16	287	60.46	319.3	
17	297	82.98	423.0	
18	303	58.81	294.5	
19	313	71.34	345.5	
20	322	66.40	312.4	
21	331	65.09	297.8	
22	350	90.43	391.6	
23	366	80.55	333.6	
24	385	117.94	463.9	
25	396	46.40	177.5	
26	414	59.92	219.4	

Assay Class: High Sensitivity DNA Assay
 Data Path: C:\...ents and Settings\Bioanalyzer\2012-07-10\2012-07-10_003.xad

Created: 7/10/2012 11:17:15 AM
 Modified: 7/10/2012 11:59:28 AM

Electropherogram Summary Continued ...

... Peak table for sample 6 : C03 Soni 7+4Cycles 1:4

Peak	Size [bp]	Conc. [pg/μl]	Molarity [pmol/l]	Observations
27	452	55.52	186.2	
28	479	72.14	228.4	
29	543	37.94	105.9	
30	561	61.60	166.3	
31	590	63.35	162.8	
32	651	18.13	42.2	
33	722	44.72	93.8	
34	853	14.77	26.2	
35	919	17.51	28.9	
36	1,166	8.45	11.0	
37	1,343	7.45	8.4	
38	1,760	4.30	3.7	
39	1,866	4.08	3.3	
40	2,028	3.62	2.7	
41	2,345	3.81	2.5	
42	2,620	3.17	1.8	
43	3,966	3.86	1.5	
44	 10,380	75.00	10.9	Upper Marker
45	11,355	0.00	0.0	
46	11,864	0.00	0.0	
47	17,080	0.00	0.0	

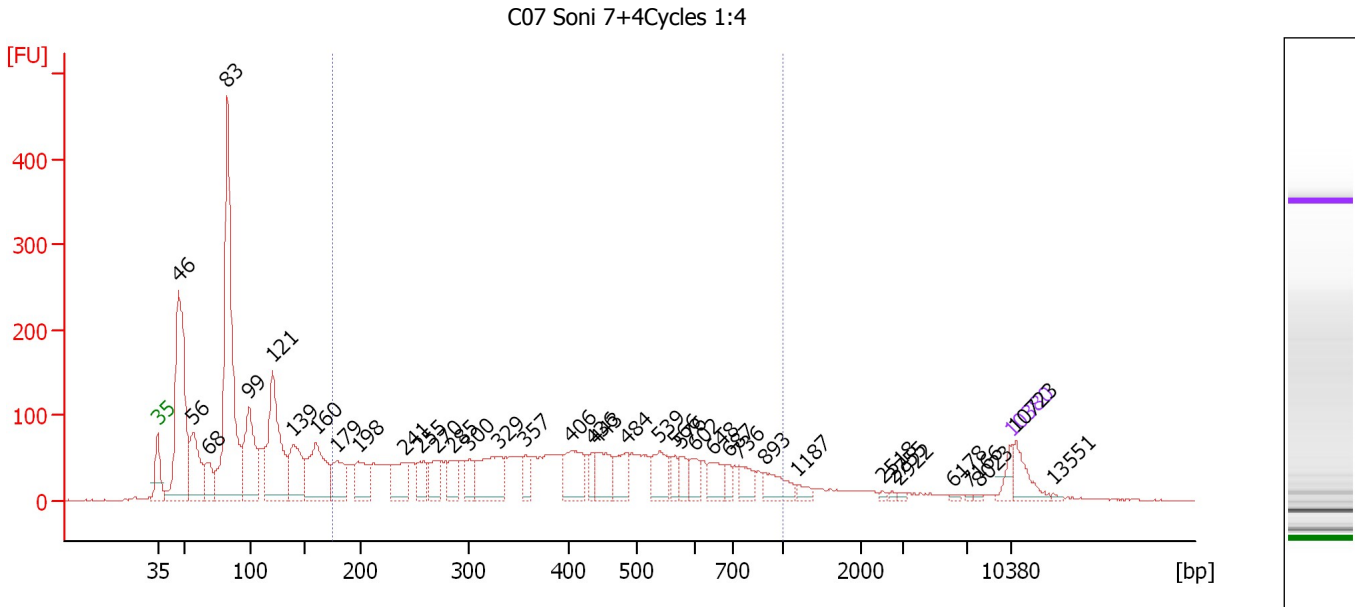
Region table for sample 6 : C03 Soni 7+4Cycles 1:4

From [bp]	To [bp]	Average Size [bp]	Molarity [pmol/l]	Conc. [pg/μl]	Corr. Area	% of Total	Size distribution in CV [%]	Color
152	768	355	16,333.5	3,012.86	1,700.1	48	39.3	

Assay Class: High Sensitivity DNA Assay
 Data Path: C:\...ents and Settings\Bioanalyzer\2012-07-10\2012-07-10_003.xad

Created: 7/10/2012 11:17:15 AM
 Modified: 7/10/2012 11:59:28 AM

Electropherogram Summary Continued ...



Overall Results for sample 7 : C07 Soni 7+4Cycles 1:4

Number of peaks found: 38 Corr. Area 1: 2,418.3
 Noise: 0.4

Peak table for sample 7 : C07 Soni 7+4Cycles 1:4


Peak	Size [bp]	Conc. [pg/μl]	Molarity [pmol/l]	Observations
1	35	125.00	5,411.3	Lower Marker
2	46	2,043.51	66,748.1	
3	56	637.06	17,284.4	
4	68	283.23	6,334.5	
5	83	2,799.33	51,266.7	
6	99	871.00	13,265.7	
7	121	1,176.00	14,733.1	
8	139	573.50	6,233.2	
9	160	717.40	6,796.9	
10	179	335.57	2,842.0	
11	198	332.13	2,543.1	
12	241	336.41	2,113.3	
13	255	204.93	1,218.7	
14	270	180.35	1,010.4	
15	285	188.29	1,000.7	
16	300	164.24	828.8	
17	329	497.14	2,289.2	
18	357	120.93	512.9	
19	406	352.88	1,318.5	
20	436	113.09	393.2	
21	443	272.76	932.6	
22	484	218.47	683.9	
23	539	236.39	664.4	
24	566	105.68	283.0	
25	576	133.41	351.1	
26	602	117.87	296.6	

Assay Class: High Sensitivity DNA Assay
 Data Path: C:\...ents and Settings\Bioanalyzer\2012-07-10\2012-07-10_003.xad


Created: 7/10/2012 11:17:15 AM
 Modified: 7/10/2012 11:59:28 AM

Electropherogram Summary Continued ...

... Peak table for sample 7 : C07 Soni 7+4Cycles 1:4

Peak	Size [bp]	Conc. [pg/µl]	Molarity [pmol/l]	Observations
27	648	174.29	407.8	
28	687	69.81	153.9	
29	736	139.90	288.2	
30	893	174.37	296.0	
31	1,187	51.49	65.7	
32	2,518	11.72	7.0	
33	2,755	11.05	6.1	
34	2,922	12.37	6.4	
35	6,178	12.66	3.1	
36	7,166	6.98	1.5	
37	8,023	10.35	2.0	
38	 10,380	75.00	10.9	Upper Marker
39	10,723	0.00	0.0	
40	13,551	0.00	0.0	

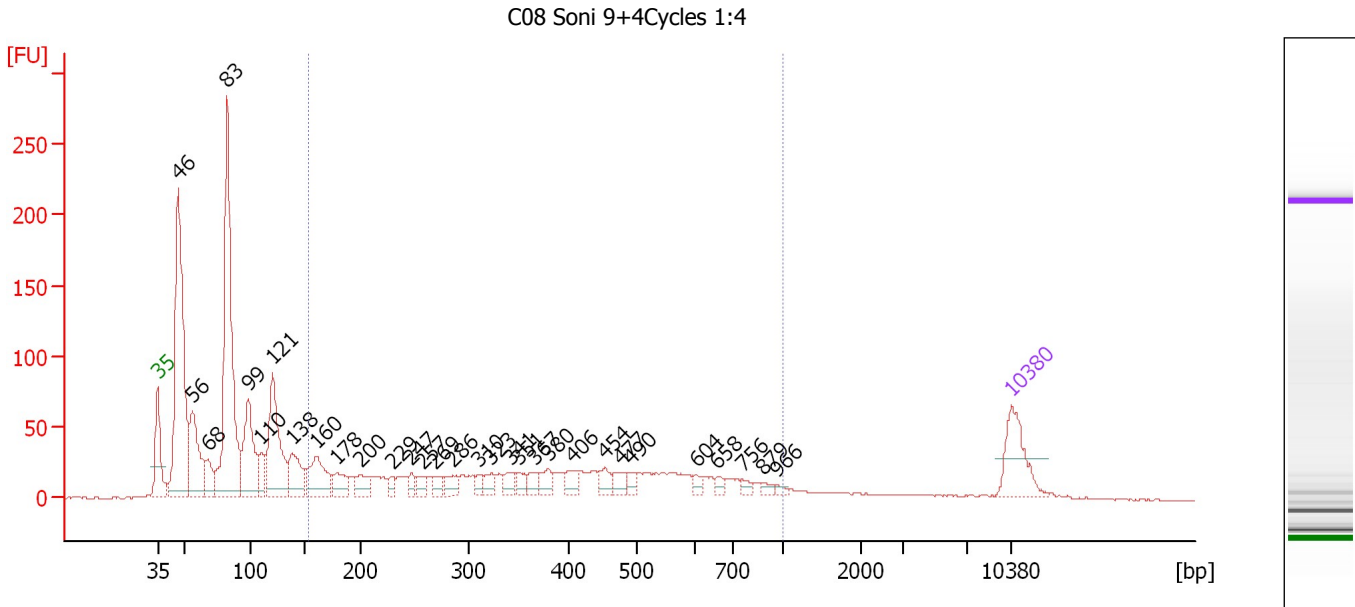
Region table for sample 7 : C07 Soni 7+4Cycles 1:4

From [bp]	To [bp]	Average Size [bp]	Molarity [pmol/l]	Conc. [pg/µl]	Corr. Area	% of Total	Size distribution in CV [%]	Color
174	1,000	426	31,035.5	6,734.84	2,418.3	46	42.4	

Assay Class: High Sensitivity DNA Assay
 Data Path: C:\...ents and Settings\Bioanalyzer\2012-07-10\2012-07-10_003.xad

Created: 7/10/2012 11:17:15 AM
 Modified: 7/10/2012 11:59:28 AM

Electropherogram Summary Continued ...



Overall Results for sample 8 : C08 Soni 9+4Cycles 1:4

Number of peaks found: 31 Corr. Area 1: 919.6
 Noise: 0.4

Peak table for sample 8 : C08 Soni 9+4Cycles 1:4

Peak	Size [bp]	Conc. [pg/μl]	Molarity [pmol/l]	Observations
1	35	125.00	5,411.3	Lower Marker
2	46	603.76	19,852.5	
3	56	187.85	5,096.6	
4	68	55.50	1,241.3	
5	83	620.74	11,368.1	
6	99	192.68	2,947.6	
7	110	53.32	733.3	
8	121	240.96	3,018.8	
9	138	98.65	1,080.2	
10	160	112.73	1,068.1	
11	178	45.45	386.0	
12	200	38.89	294.7	
13	229	16.11	106.5	
14	247	16.88	103.6	
15	257	21.72	128.1	
16	269	22.14	124.7	
17	286	29.23	155.0	
18	310	14.38	70.3	
19	323	23.39	109.8	
20	341	24.54	109.0	
21	351	18.43	79.6	
22	367	21.15	87.3	
23	380	26.17	104.3	
24	406	26.54	99.0	
25	454	22.50	75.1	
26	477	22.94	72.9	

Assay Class: High Sensitivity DNA Assay
 Data Path: C:\...ents and Settings\Bioanalyzer\2012-07-10\2012-07-10_003.xad

Created: 7/10/2012 11:17:15 AM
 Modified: 7/10/2012 11:59:28 AM

Electropherogram Summary Continued ...

... Peak table for sample 8 : C08 Soni 9+4Cycles 1:4

Peak	Size [bp]	Conc. [pg/μl]	Molarity [pmol/l]	Observations
27	490	15.43	47.7	
28	604	11.63	29.2	
29	658	9.96	22.9	
30	756	9.87	19.8	
31	879	7.72	13.3	
32	966	5.60	8.8	
33	▶ 10,380	75.00	10.9	Upper Marker

Region table for sample 8 : C08 Soni 9+4Cycles 1:4

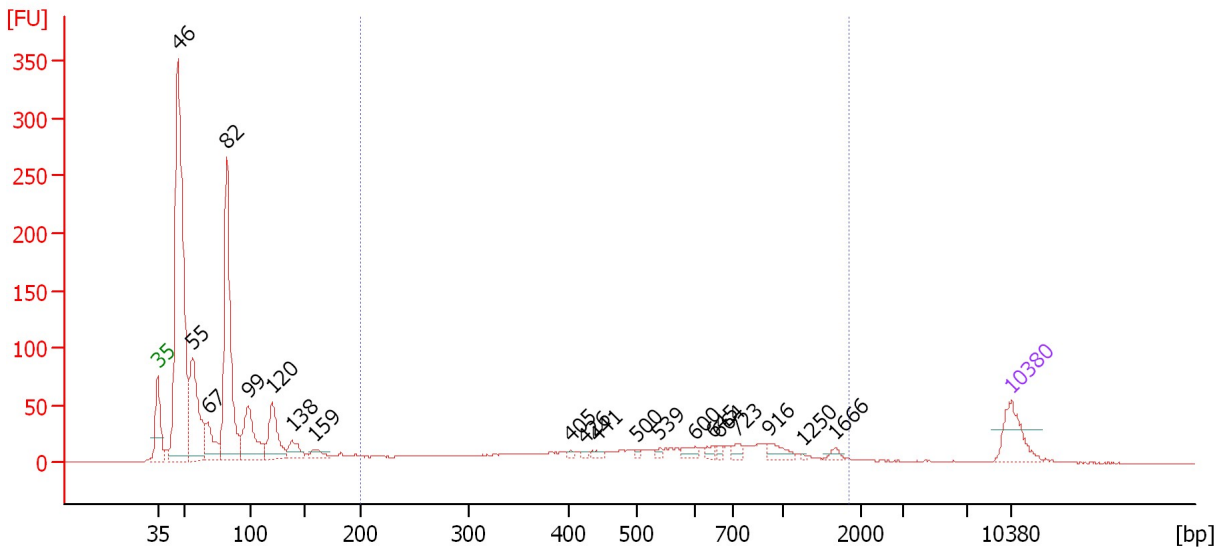
From [bp]	To [bp]	Average Size [bp]	Molarity [pmol/l]	Conc. [pg/μl]	Corr. Area	% of Total	Size distribution in CV [%]	Color
153	1,000	408	5,130.8	1,003.71	919.6	38	45.7	■

Assay Class: High Sensitivity DNA Assay
 Data Path: C:\...ents and Settings\Bioanalyzer\2012-07-10\2012-07-10_003.xad

Created: 7/10/2012 11:17:15 AM
 Modified: 7/10/2012 11:59:28 AM

Electropherogram Summary Continued ...

C09 Soni 9+4Cycles 1:4



Overall Results for sample 9 : C09 Soni 9+4Cycles 1:4

Number of peaks found: 20 Corr. Area 1: 484.7
 Noise: 0.2

Peak table for sample 9 : C09 Soni 9+4Cycles 1:4

Peak	Size [bp]	Conc. [pg/μl]	Molarity [pmol/l]	Observations
1	35	125.00	5,411.3	Lower Marker
2	46	1,178.98	38,735.8	
3	55	338.51	9,242.6	
4	67	106.60	2,395.2	
5	82	629.06	11,557.1	
6	99	196.13	3,006.7	
7	120	150.44	1,895.4	
8	138	53.11	582.0	
9	159	26.69	254.5	
10	405	5.34	20.0	
11	426	5.74	20.4	
12	441	11.65	40.0	
13	500	6.51	19.7	
14	539	8.49	23.9	
15	600	20.16	50.9	
16	645	12.02	28.2	
17	664	9.50	21.7	
18	723	17.54	36.8	
19	916	27.61	45.7	
20	1,250	2.90	3.5	
21	1,666	10.46	9.5	
22	10,380	75.00	10.9	Upper Marker

Region table for sample 9 : C09 Soni 9+4Cycles 1:4

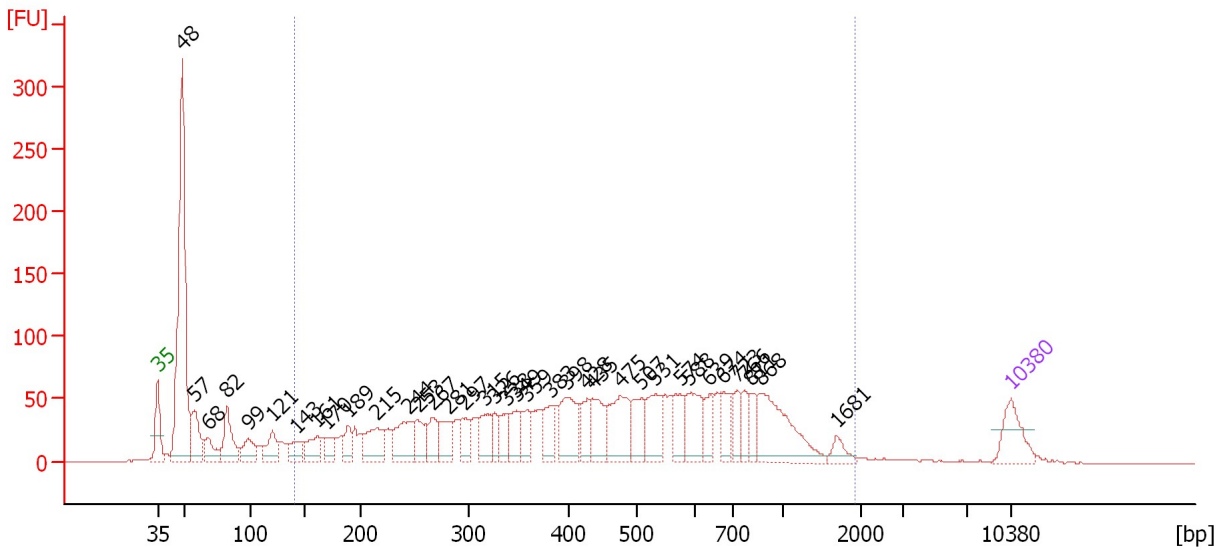
From [bp]	To [bp]	Average Size [bp]	Molarity [pmol/l]	Conc. [pg/μl]	Corr. Area	% of Total	Size distribution in CV [%]	Color
200	1,848	619	2,141.7	611.22	484.7	23	55.5	Blue

Assay Class: High Sensitivity DNA Assay
 Data Path: C:\...ents and Settings\Bioanalyzer\2012-07-10\2012-07-10_003.xad

Created: 7/10/2012 11:17:15 AM
 Modified: 7/10/2012 11:59:28 AM

Electropherogram Summary Continued ...

B23 Soni 9+4Cycles 1:4



Overall Results for sample 10 : B23 Soni 9+4Cycles 1:4

Number of peaks found: 37 Corr. Area 1: 2,287.0
 Noise: 0.2

Peak table for sample 10 : B23 Soni 9+4Cycles 1:4

Peak	Size [bp]	Conc. [pg/μl]	Molarity [pmol/l]	Observations
1	35	125.00	5,411.3	Lower Marker
2	48	901.40	28,242.7	
3	57	135.70	3,607.6	
4	68	73.66	1,649.2	
5	82	139.04	2,558.1	
6	99	78.46	1,203.0	
7	121	87.17	1,092.5	
8	143	62.92	666.0	
9	161	81.67	767.3	
10	170	57.30	510.5	
11	189	52.35	420.3	
12	215	124.91	878.7	
13	244	135.67	841.1	
14	253	77.20	462.7	
15	267	74.29	422.3	
16	281	80.04	431.1	
17	297	68.30	348.9	
18	315	89.19	428.4	
19	326	47.95	222.9	
20	338	64.73	290.6	
21	349	73.87	321.1	
22	359	62.45	263.6	
23	383	78.40	309.8	
24	398	149.35	568.6	
25	428	66.23	234.2	
26	435	108.59	378.2	

Assay Class: High Sensitivity DNA Assay
 Data Path: C:\...ents and Settings\Bioanalyzer\2012-07-10\2012-07-10_003.xad

Created: 7/10/2012 11:17:15 AM
 Modified: 7/10/2012 11:59:28 AM

Electropherogram Summary Continued ...

... Peak table for sample 10 : B23 Soni 9+4Cycles 1:4

Peak	Size [bp]	Conc. [pg/µl]	Molarity [pmol/l]	Observations
27	475	167.18	532.7	
28	507	90.37	269.9	
29	531	114.82	327.5	
30	574	76.81	202.7	
31	588	117.87	303.6	
32	639	62.31	147.8	
33	674	58.56	131.6	
34	723	58.54	122.6	
35	766	49.52	98.0	
36	811	43.89	81.9	
37	868	217.69	380.1	
38	1,681	27.52	24.8	
39	▶ 10,380	75.00	10.9	Upper Marker

Region table for sample 10 : B23 Soni 9+4Cycles 1:4

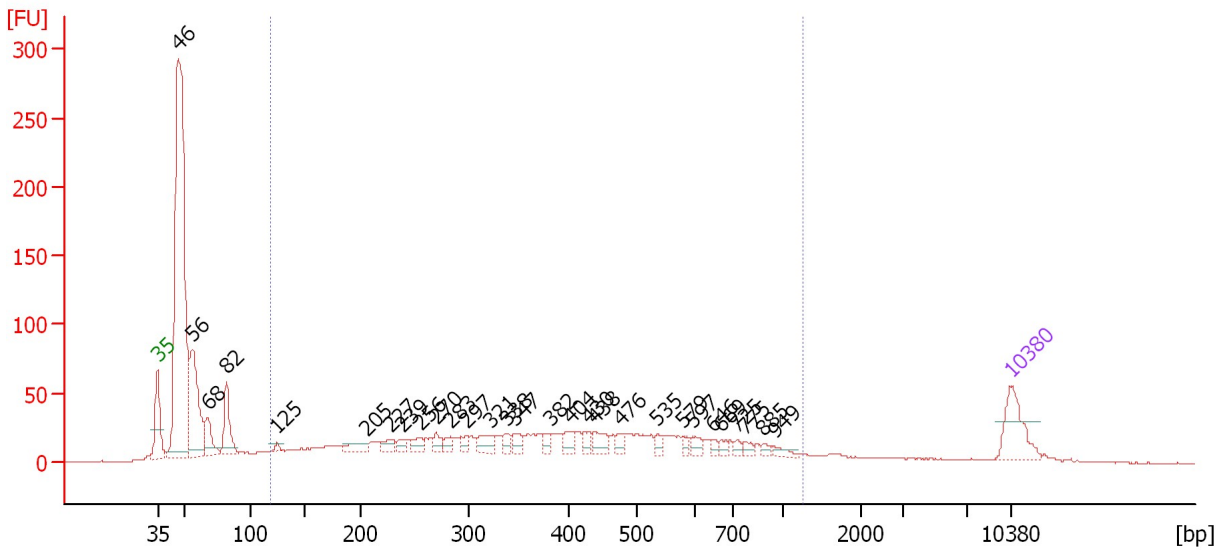
From [bp]	To [bp]	Average Size [bp]	Molarity [pmol/l]	Conc. [pg/µl]	Corr. Area	% of Total	Size distribution in CV [%]	Color
140	1,905	517	13,457.3	3,100.33	2,287.0	73	55.8	■

Assay Class: High Sensitivity DNA Assay
 Data Path: C:\...ents and Settings\Bioanalyzer\2012-07-10\2012-07-10_003.xad

Created: 7/10/2012 11:17:15 AM
 Modified: 7/10/2012 11:59:28 AM

Electropherogram Summary Continued ...

B26 Soni 9+4Cycles 1:4



Overall Results for sample 11 : B26 Soni 9+4Cycles 1:4

Number of peaks found: 29 Corr. Area 1: 1,014.5
 Noise: 0.2

Peak table for sample 11 : B26 Soni 9+4Cycles 1:4

Peak	Size [bp]	Conc. [pg/μl]	Molarity [pmol/l]	Observations
1	35	125.00	5,411.3	Lower Marker
2	46	1,173.11	38,398.4	
3	56	262.04	7,100.6	
4	68	73.87	1,656.0	
5	82	108.09	1,998.1	
6	125	9.14	110.8	
7	205	28.76	212.5	
8	227	22.37	149.4	
9	239	17.27	109.7	
10	256	25.67	152.2	
11	270	21.34	119.7	
12	283	19.13	102.5	
13	297	18.73	95.5	
14	321	33.30	157.2	
15	338	17.66	79.2	
16	347	23.39	102.2	
17	382	18.00	71.4	
18	404	27.10	101.6	
19	430	17.23	60.7	
20	438	34.57	119.4	
21	476	19.15	60.9	
22	535	13.17	37.3	
23	579	11.63	30.5	
24	597	19.14	48.6	
25	646	10.26	24.1	
26	669	12.70	28.8	

Assay Class: High Sensitivity DNA Assay
 Data Path: C:\...ents and Settings\Bioanalyzer\2012-07-10\2012-07-10_003.xad

Created: 7/10/2012 11:17:15 AM
 Modified: 7/10/2012 11:59:28 AM

Electropherogram Summary Continued ...

... Peak table for sample 11 : B26 Soni 9+4Cycles 1:4

Peak	Size [bp]	Conc. [pg/μl]	Molarity [pmol/l]	Observations
27	725	10.85	22.7	
28	775	11.07	21.6	
29	885	8.73	14.9	
30	949	12.36	19.7	
31	10,380	75.00	10.9	Upper Marker

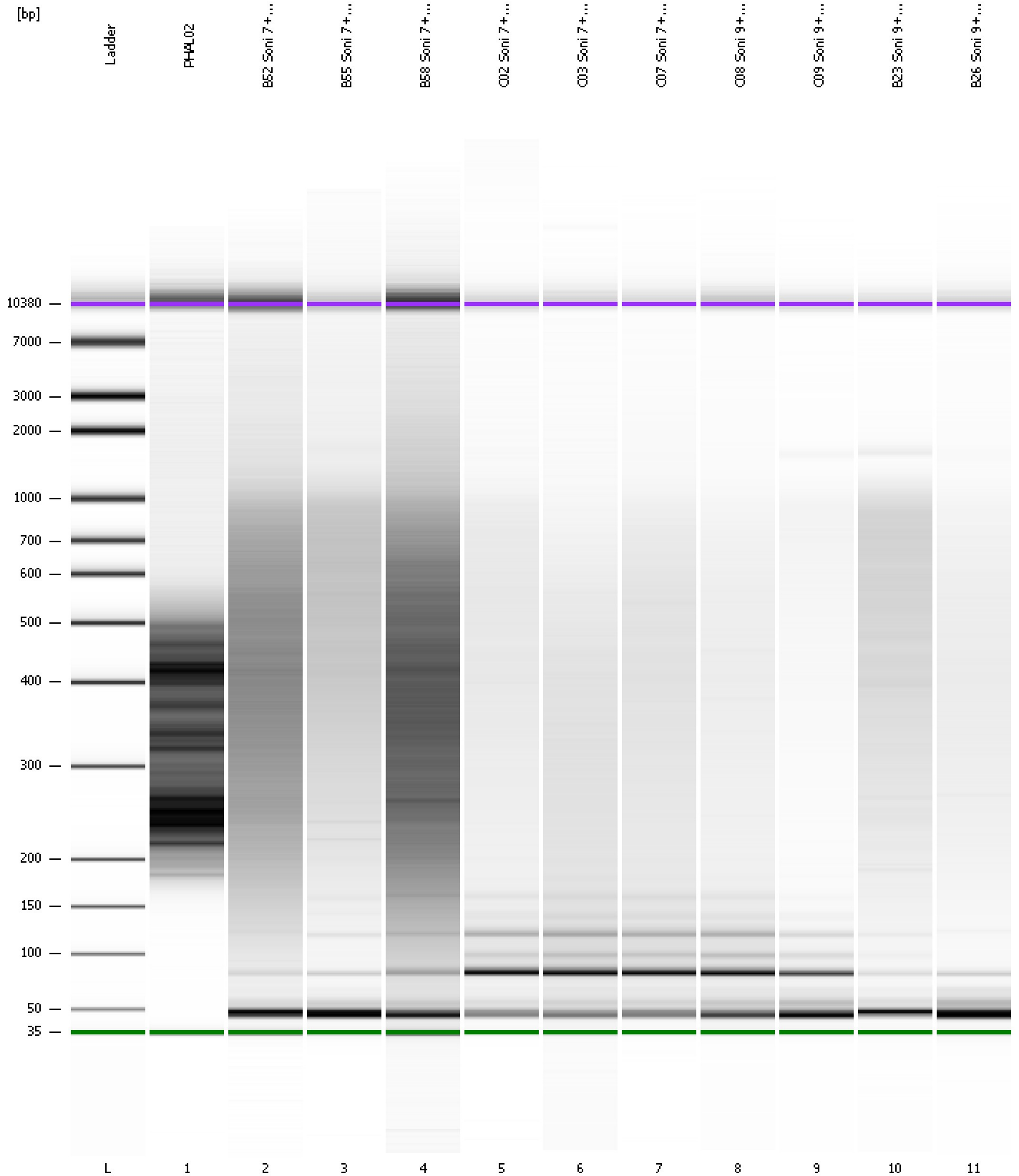
Region table for sample 11 : B26 Soni 9+4Cycles 1:4

From [bp]	To [bp]	Average Size [bp]	Molarity [pmol/l]	Conc. [pg/μl]	Corr. Area	% of Total	Size distribution in CV [%]	Color
118	1,263	424	7,284.9	1,412.53	1,014.5	49	49.4	

Assay Class: High Sensitivity DNA Assay
Data Path: C:\...ents and Settings\Bioanalyzer\2012-07-10\2012-07-10_003.xad

Created: 7/10/2012 11:17:15 AM
Modified: 7/10/2012 11:59:28 AM

Gel Image



Assay Class: High Sensitivity DNA Assay
 Data Path: C:\...ents and Settings\Bioanalyzer\2012-07-10\2012-07-10_003.xad

Created: 7/10/2012 11:17:15 AM
 Modified: 7/10/2012 11:59:28 AM

Run Logbook

Description	Number	Source	Category	Sub Category	Time	Time Zone	User	Host
Run ended on port 1 (Number of wells acquired: 12)		Instrument	Run		7/10/2012 11:58:30 AM	(GMT --07:00) Pacific Standard Time	UC Davis	D8XSMGH1
Run started on port 1 (File: C:\Documents and Settings\Bioanalyzer\2012-07-10\2012-07-10_003.xad)		Instrument	Run		7/10/2012 11:17:15 AM	(GMT --07:00) Pacific Standard Time	UC Davis	D8XSMGH1
Product Number : G2938B		Instrument	Run		7/10/2012 11:17:15 AM	(GMT --07:00) Pacific Standard Time	UC Davis	D8XSMGH1
Name :		Instrument	Run		7/10/2012 11:17:15 AM	(GMT --07:00) Pacific Standard Time	UC Davis	D8XSMGH1
Vendor : Agilent Technologies		Instrument	Run		7/10/2012 11:17:15 AM	(GMT --07:00) Pacific Standard Time	UC Davis	D8XSMGH1
Serial# : DE13701086		Instrument	Run		7/10/2012 11:17:15 AM	(GMT --07:00) Pacific Standard Time	UC Davis	D8XSMGH1
Firmware : C.01.069		Instrument	Run		7/10/2012 11:17:15 AM	(GMT --07:00) Pacific Standard Time	UC Davis	D8XSMGH1
Cartridge : Electrode		Instrument	Run		7/10/2012 11:17:15 AM	(GMT --07:00) Pacific Standard Time	UC Davis	D8XSMGH1