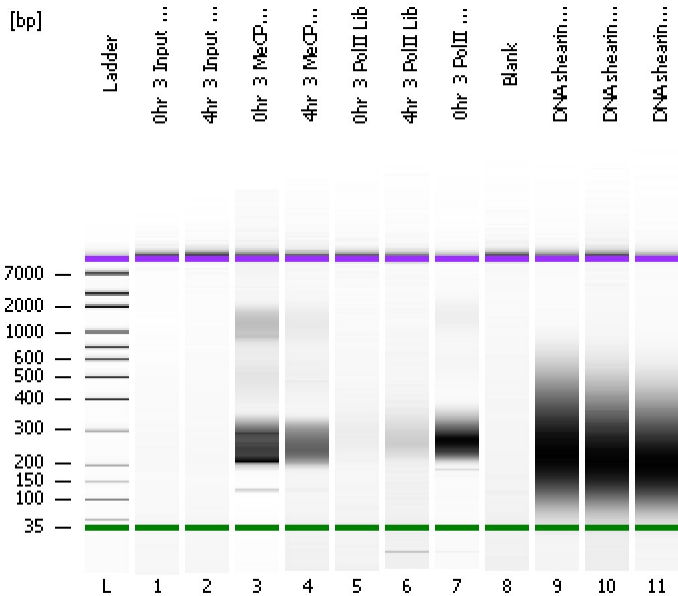


Assay Class: High Sensitivity DNA Assay
 Data Path: C:\...ents and Settings\Bioanalyzer\2012-07-10\2012-07-10_004.xad

Created: 7/10/2012 12:14:43 PM
 Modified: 7/10/2012 12:56:45 PM

Electrophoresis File Run Summary



Instrument Information:

Instrument Name: DE13701086 Firmware: C.01.069
 Serial#: DE13701086 Type: G2938B

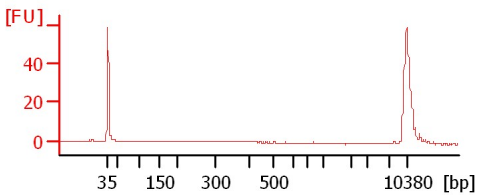
Assay Information:

Assay Origin Path: C:\Program Files\Agilent\2100 bioanalyzer\2100 expert\assays\dsDNA\High Sensitivity DNA.xsy
 Assay Class: High Sensitivity DNA Assay
 Version: 1.03
 Assay Comments: Copyright © 2003-2010 Agilent Technologies

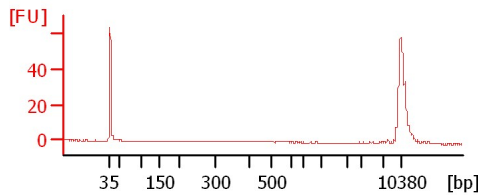
Chip Information:

Chip Lot #:
 Reagent Kit Lot #:
 Chip Comments:

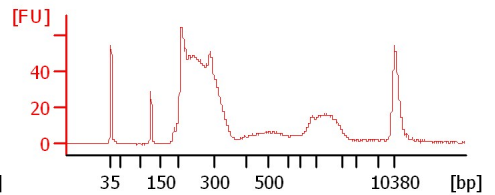
Ohr_3 Input Lib



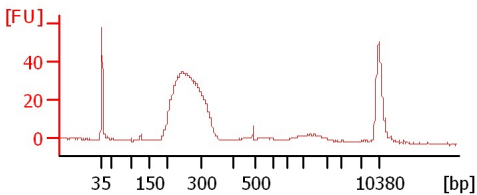
4hr_3 Input Lib



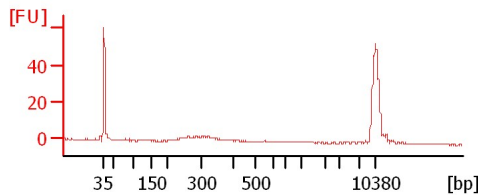
Ohr_3 MeCP2 Lib



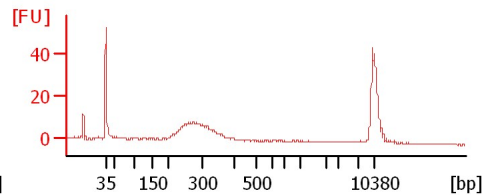
4hr_3 MeCP2 Lib



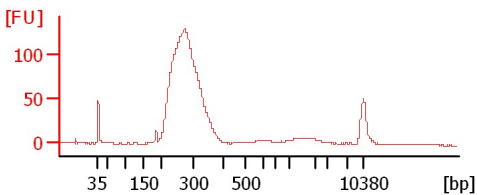
Ohr_3 PolII Lib



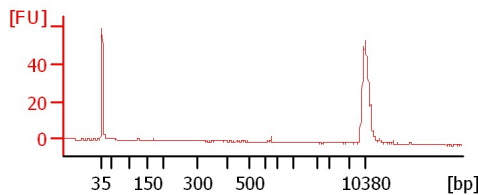
4hr_3 PolII Lib



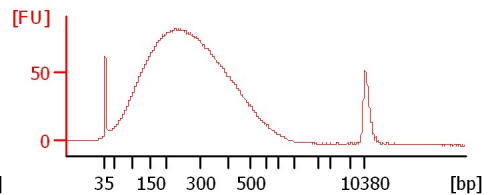
Ohr_3 PolII Lib_2



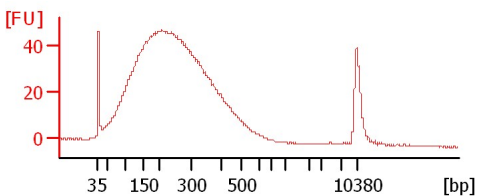
Blank



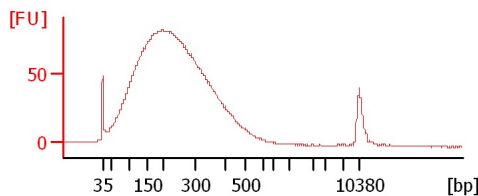
DNA shearing 50'



DNA shearing 60'



DNA shearing 70'



Assay Class: High Sensitivity DNA Assay
 Data Path: C:\...ents and Settings\Bioanalyzer\2012-07-10\2012-07-10_004.xad

Created: 7/10/2012 12:14:43 PM
 Modified: 7/10/2012 12:56:45 PM

Electrophoresis File Run Summary (Chip Summary)

Sample Name	Sample Comment	Rest. Digest	Status	Observation	Result Label	Result Color
0hr_3 Input Lib		<input type="checkbox"/>	✓			
4hr_3 Input Lib		<input type="checkbox"/>	✓			
0hr_3 MeCP2 Lib		<input type="checkbox"/>	✓			
4hr_3 MeCP2 Lib		<input type="checkbox"/>	✓			
0hr_3 PolII Lib		<input type="checkbox"/>	✓			
4hr_3 PolII Lib		<input type="checkbox"/>	✓			
0hr_3 PolII Lib_2		<input type="checkbox"/>	✓			
Blank		<input type="checkbox"/>	✓			
DNA shearing 50'		<input type="checkbox"/>	✓			
DNA shearing 60'		<input type="checkbox"/>	✓			
DNA shearing 70'		<input type="checkbox"/>	✓			
Ladder		<input type="checkbox"/>	✓			

Chip Lot #

Reagent Kit Lot #

Chip Comments :

Assay Class: High Sensitivity DNA Assay
Data Path: C:\...ents and Settings\Bioanalyzer\2012-07-10\2012-07-10_004.xad

Created: 7/10/2012 12:14:43 PM
Modified: 7/10/2012 12:56:45 PM

Electrophoresis Assay Details

General Analysis Settings

Number of Available Sample and Ladder Wells (Max.) : 12
Minimum Visible Range [s] : 32
Maximum Visible Range [s] : 138
Start Analysis Time Range [s] : 33
End Analysis Time Range [s] : 137.5
Ladder Concentration [pg/μl] : 1950
Uses Standard Area for Ladder Fragments
Lower Marker Concentration [pg/μl] : 125
Upper Marker Concentration [pg/μl] : 75
Used Upper Marker for Quantitation
Standard Curve Fit is Point to Point
Show Data Aligned to Lower and Upper Marker

Integrator Settings

Integration Start Time [s] : 33.05
Integration End Time [s] : 137
Slope Threshold : 0.8
Height Threshold [FU] : 5
Area Threshold : 0.1
Width Threshold [s] : 0.6
Baseline Plateau [s] : 0.5

Filter Settings

Filter Width [s] : 0.5
Polynomial Order : 4

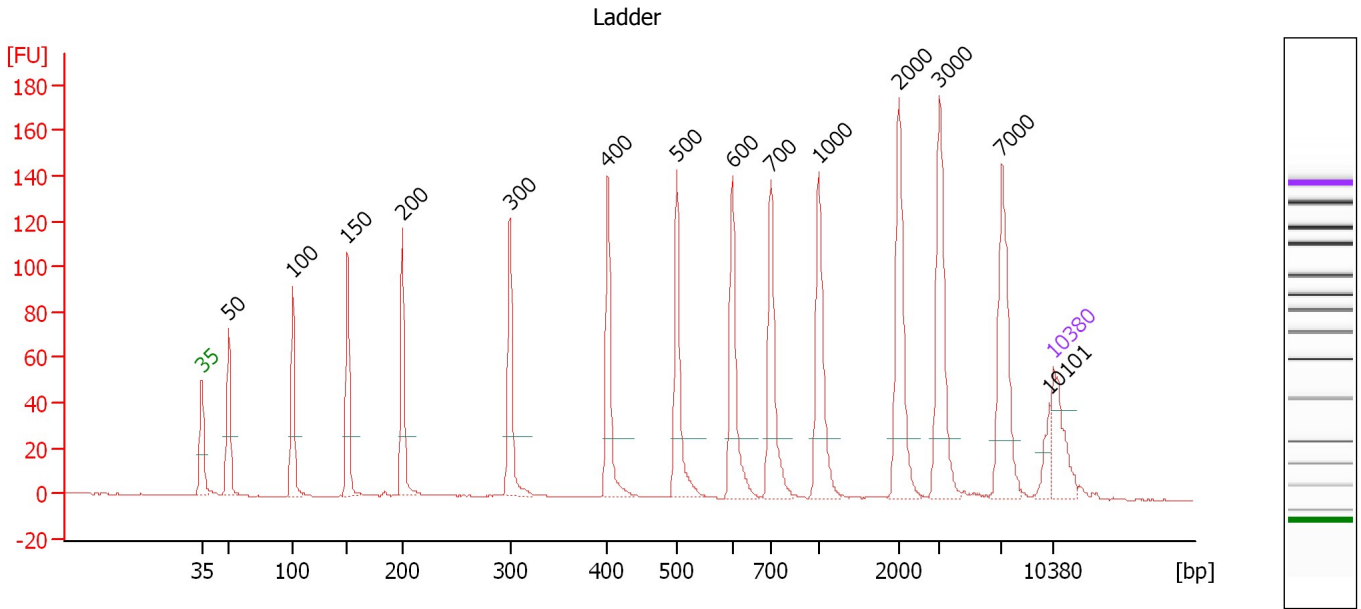
Ladder

Ladder Peak	Size	Area
1	35	160
2	50	210
3	100	208
4	150	221
5	200	242
6	300	270
7	400	305
8	500	306
9	600	336
10	700	321
11	1000	366
12	2000	413
13	3000	411
14	7000	400
15	10380	214

Assay Class: High Sensitivity DNA Assay
 Data Path: C:\...ents and Settings\Bioanalyzer\2012-07-10\2012-07-10_004.xad

Created: 7/10/2012 12:14:43 PM
 Modified: 7/10/2012 12:56:45 PM

Electropherogram Summary



Overall Results for Ladder

Noise: 0.1

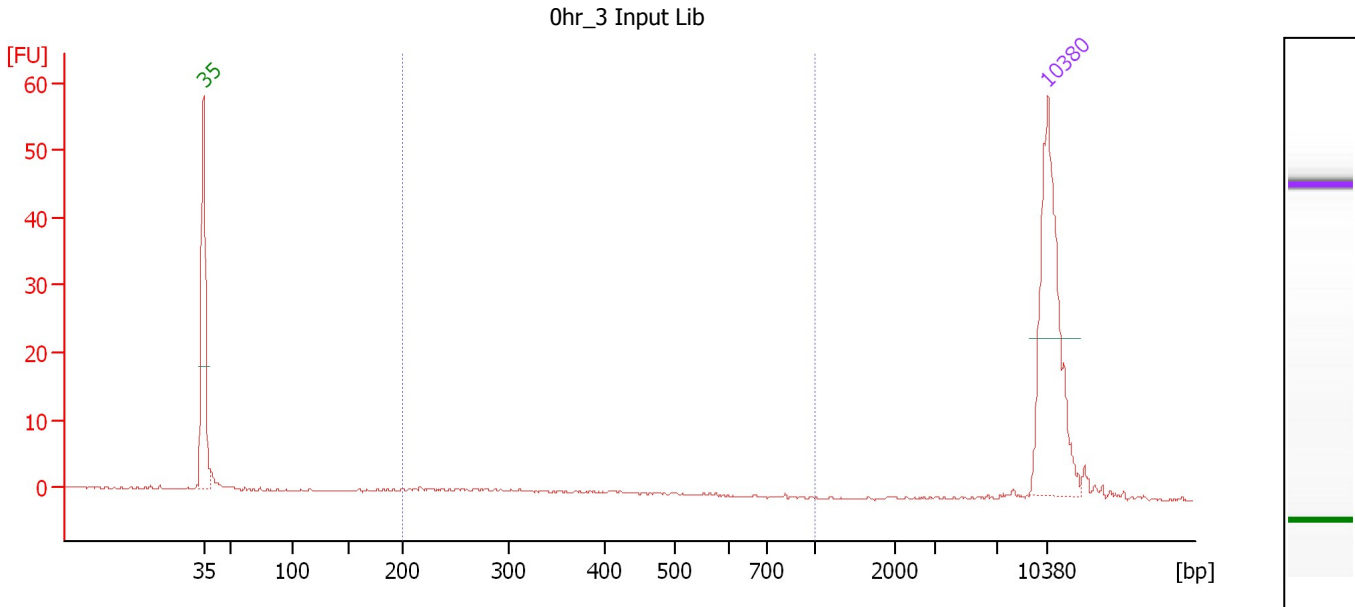
Peak table for Ladder

Peak	Size [bp]	Conc. [pg/μl]	Molarity [pmol/l]	Observations
1	35	125.00	5,411.3	Lower Marker
2	50	150.00	4,545.5	Ladder Peak
3	100	150.00	2,272.7	Ladder Peak
4	150	150.00	1,515.2	Ladder Peak
5	200	150.00	1,136.4	Ladder Peak
6	300	150.00	757.6	Ladder Peak
7	400	150.00	568.2	Ladder Peak
8	500	150.00	454.5	Ladder Peak
9	600	150.00	378.8	Ladder Peak
10	700	150.00	324.7	Ladder Peak
11	1,000	150.00	227.3	Ladder Peak
12	2,000	150.00	113.6	Ladder Peak
13	3,000	150.00	75.8	Ladder Peak
14	7,000	150.00	32.5	Ladder Peak
15	10,101	0.00	0.0	
16	10,380	75.00	10.9	Upper Marker

Assay Class: High Sensitivity DNA Assay
 Data Path: C:\...ents and Settings\Bioanalyzer\2012-07-10\2012-07-10_004.xad

Created: 7/10/2012 12:14:43 PM
 Modified: 7/10/2012 12:56:45 PM

Electropherogram Summary Continued ...



Overall Results for sample 1 : Ohr_3 Input Lib

Number of peaks found: 0 Corr. Area 1: 6.9
 Noise: 0.2

Peak table for sample 1 : Ohr_3 Input Lib

Peak	Size [bp]	Conc. [pg/μl]	Molarity [pmol/l]	Observations
1	35	125.00	5,411.3	Lower Marker
2	10,380	75.00	10.9	Upper Marker

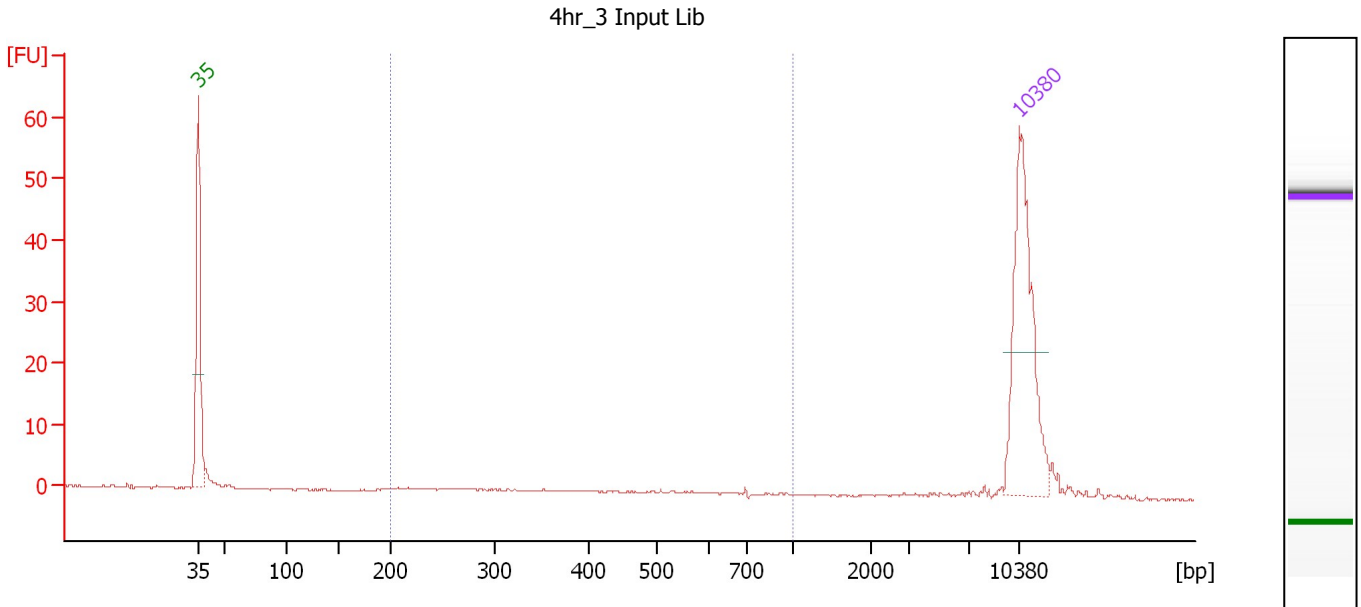
Region table for sample 1 : Ohr_3 Input Lib

From [bp]	To [bp]	Average Size [bp]	Molarity [pmol/l]	Conc. [pg/μl]	Corr. Area	% of Total	Size distribution in CV [%]	Color
200	1,000	324	45.4	8.80	6.9	37	29.7	Blue

Assay Class: High Sensitivity DNA Assay
 Data Path: C:\...ents and Settings\Bioanalyzer\2012-07-10\2012-07-10_004.xad

Created: 7/10/2012 12:14:43 PM
 Modified: 7/10/2012 12:56:45 PM

Electropherogram Summary Continued ...



Overall Results for sample 2 : 4hr 3 Input Lib

Number of peaks found: 0 Corr. Area 1: 9.9
 Noise: 0.1

Peak table for sample 2 : 4hr 3 Input Lib

Peak	Size [bp]	Conc. [pg/μl]	Molarity [pmol/l]	Observations
1	35	125.00	5,411.3	Lower Marker
2	10,380	75.00	10.9	Upper Marker

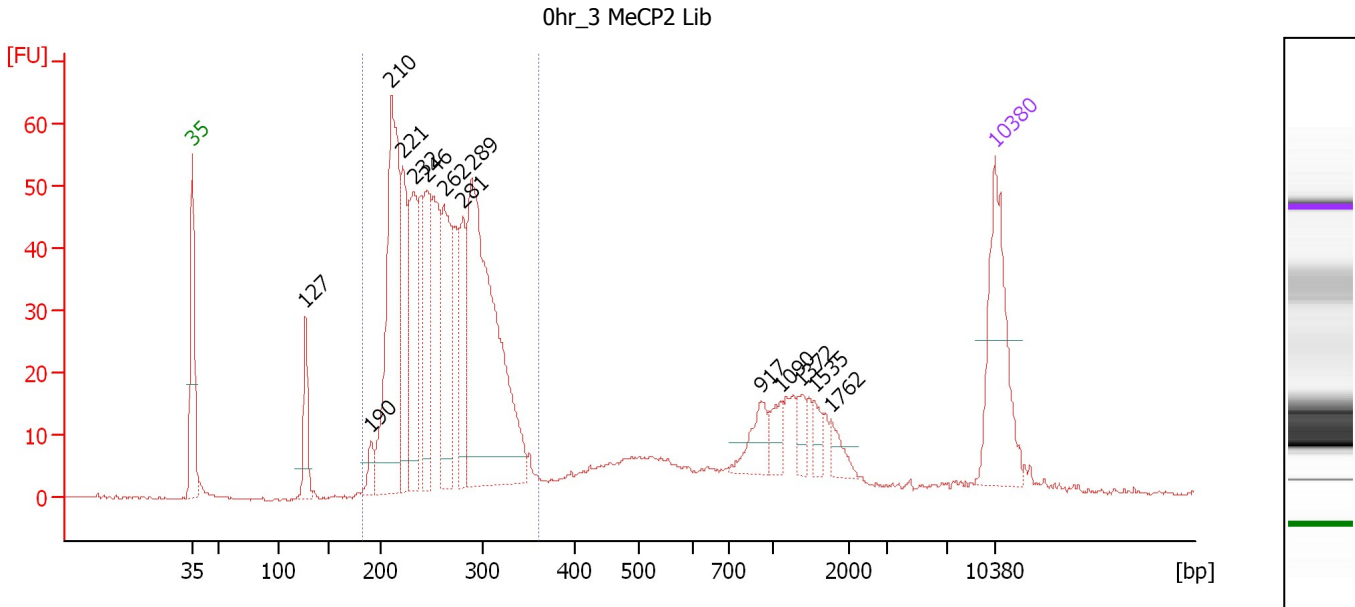
Region table for sample 2 : 4hr 3 Input Lib

From [bp]	To [bp]	Average Size [bp]	Molarity [pmol/l]	Conc. [pg/μl]	Corr. Area	% of Total	Size distribution in CV [%]	Color
200	1,000	428	51.2	11.45	9.9	34	43.0	Blue

Assay Class: High Sensitivity DNA Assay
 Data Path: C:\...ents and Settings\Bioanalyzer\2012-07-10\2012-07-10_004.xad

Created: 7/10/2012 12:14:43 PM
 Modified: 7/10/2012 12:56:45 PM

Electropherogram Summary Continued ...



Overall Results for sample 3 : 0hr_3 MeCP2 Lib

Number of peaks found: 14 Corr. Area 1: 814.6
 Noise: 0.2

Peak table for sample 3 : 0hr_3 MeCP2 Lib

Peak	Size [bp]	Conc. [pg/μl]	Molarity [pmol/l]	Observations
1	35	125.00	5,411.3	Lower Marker
2	127	43.63	521.8	
3	190	15.12	120.6	
4	210	225.64	1,629.5	
5	221	79.11	542.8	
6	232	101.24	661.6	
7	246	87.54	540.2	
8	262	106.13	614.2	
9	281	57.84	312.2	
10	289	313.73	1,644.1	
11	917	24.25	40.1	
12	1,090	15.59	21.7	
13	1,372	11.42	12.6	
14	1,535	9.64	9.5	
15	1,762	11.04	9.5	
16	10,380	75.00	10.9	Upper Marker

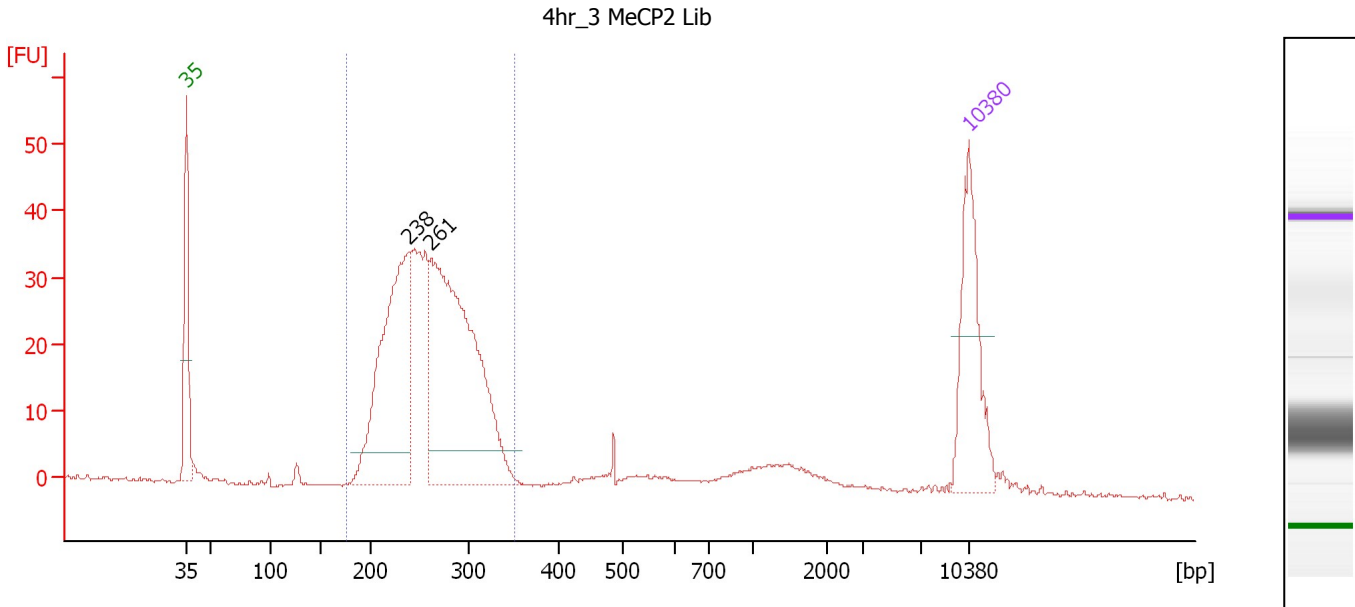
Region table for sample 3 : 0hr_3 MeCP2 Lib

From [bp]	To [bp]	Average Size [bp]	Molarity [pmol/l]	Conc. [pg/μl]	Corr. Area	% of Total	Size distribution in CV [%]	Color
182	361	261	7,210.5	1,219.68	814.6	74	14.8	Blue

Assay Class: High Sensitivity DNA Assay
 Data Path: C:\...ents and Settings\Bioanalyzer\2012-07-10\2012-07-10_004.xad

Created: 7/10/2012 12:14:43 PM
 Modified: 7/10/2012 12:56:45 PM

Electropherogram Summary Continued ...



Overall Results for sample 4 : 4hr 3 MeCP2 Lib

Number of peaks found: 2 Corr. Area 1: 494.5
 Noise: 0.2

Peak table for sample 4 : 4hr 3 MeCP2 Lib

Peak	Size [bp]	Conc. [pg/μl]	Molarity [pmol/l]	Observations
1	35	125.00	5,411.3	Lower Marker
2	238	254.80	1,625.4	
3	261	366.54	2,126.0	
4	10,380	75.00	10.9	Upper Marker

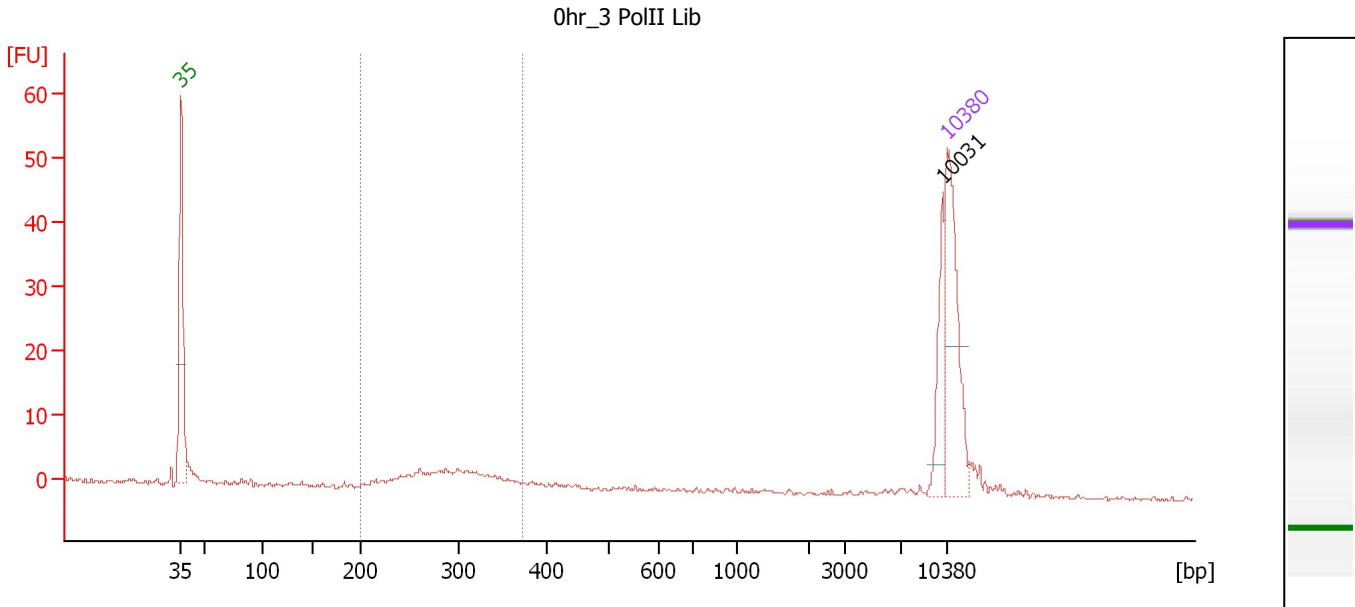
Region table for sample 4 : 4hr 3 MeCP2 Lib

From [bp]	To [bp]	Average Size [bp]	Molarity [pmol/l]	Conc. [pg/μl]	Corr. Area	% of Total	Size distribution in CV [%]	Color
175	351	261	4,363.6	740.29	494.5	87	13.5	Blue

Assay Class: High Sensitivity DNA Assay
 Data Path: C:\...ents and Settings\Bioanalyzer\2012-07-10\2012-07-10_004.xad

Created: 7/10/2012 12:14:43 PM
 Modified: 7/10/2012 12:56:45 PM

Electropherogram Summary Continued ...



Overall Results for sample 5 : 0hr 3 PolII Lib

Number of peaks found: 1 Corr. Area 1: 37.7
 Noise: 0.3

Peak table for sample 5 : 0hr 3 PolII Lib

Peak	Size [bp]	Conc. [pg/μl]	Molarity [pmol/l]	Observations
1	35	125.00	5,411.3	Lower Marker
2	10,031	31.18	4.7	
3	10,380	75.00	10.9	Upper Marker

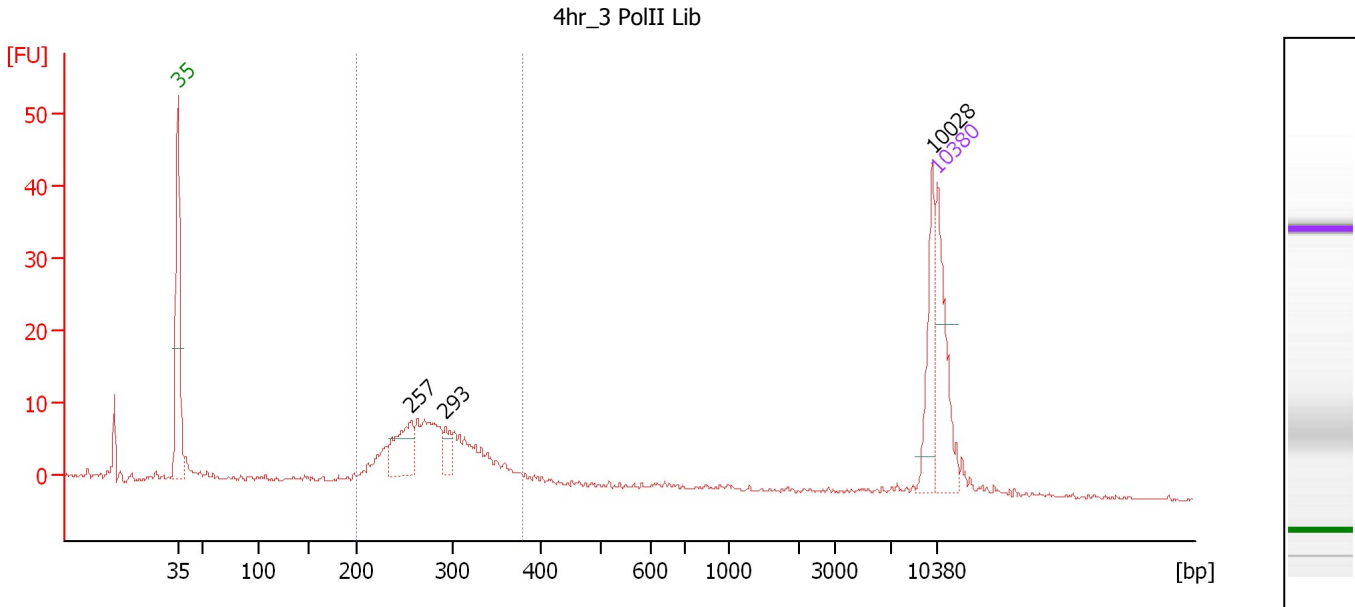
Region table for sample 5 : 0hr 3 PolII Lib

From [bp]	To [bp]	Average Size [bp]	Molarity [pmol/l]	Conc. [pg/μl]	Corr. Area	% of Total	Size distribution in CV [%]	Color
200	374	292	370.2	69.80	37.7	39	13.8	Blue

Assay Class: High Sensitivity DNA Assay
 Data Path: C:\...ents and Settings\Bioanalyzer\2012-07-10\2012-07-10_004.xad

Created: 7/10/2012 12:14:43 PM
 Modified: 7/10/2012 12:56:45 PM

Electropherogram Summary Continued ...



Overall Results for sample 6 : 4hr 3 PolII Lib

Number of peaks found: 3 Corr. Area 1: 120.3
 Noise: 0.2

Peak table for sample 6 : 4hr 3 PolII Lib

Peak	Size [bp]	Conc. [pg/μl]	Molarity [pmol/l]	Observations
1	35	125.00	5,411.3	Lower Marker
2	257	69.13	407.5	
3	293	20.98	108.7	
4	10,028	56.96	8.6	
5	10,380	75.00	10.9	Upper Marker

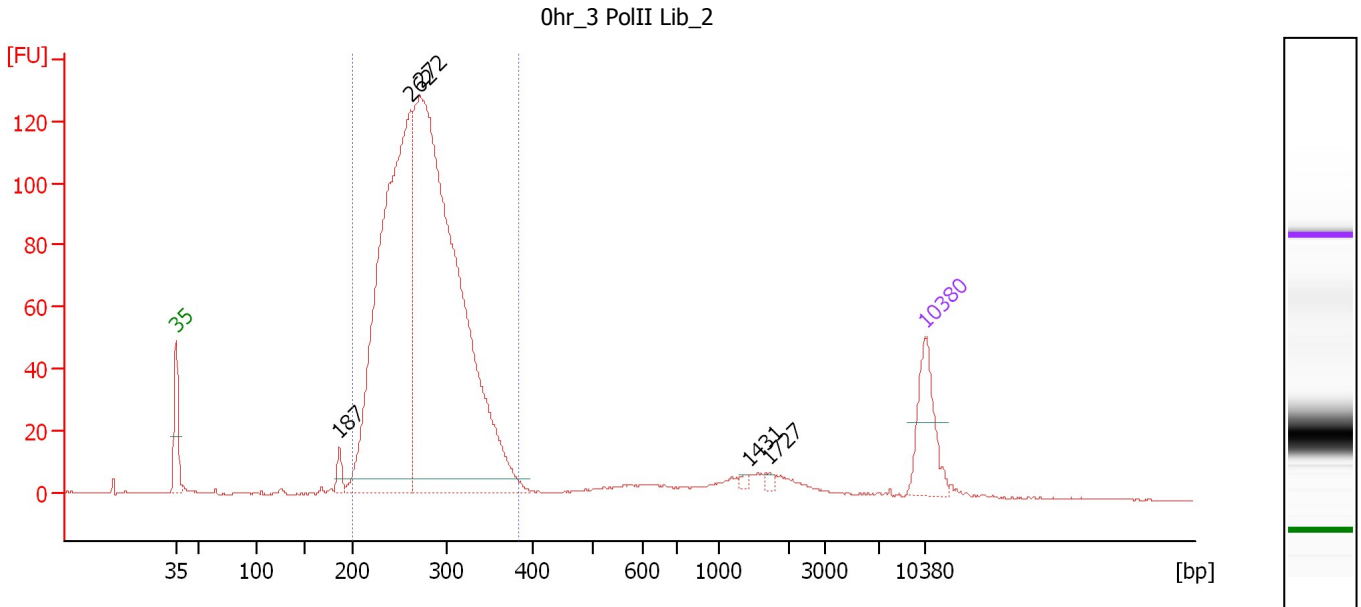
Region table for sample 6 : 4hr 3 PolII Lib

From [bp]	To [bp]	Average Size [bp]	Molarity [pmol/l]	Conc. [pg/μl]	Corr. Area	% of Total	Size distribution in CV [%]	Color
200	381	283	1,957.8	358.30	120.3	62	14.3	Blue

Assay Class: High Sensitivity DNA Assay
 Data Path: C:\...ents and Settings\Bioanalyzer\2012-07-10\2012-07-10_004.xad

Created: 7/10/2012 12:14:43 PM
 Modified: 7/10/2012 12:56:45 PM

Electropherogram Summary Continued ...



Overall Results for sample 7 : Ohr_3 PolII Lib_2

Number of peaks found: 5 Corr. Area 1: 1,625.7
 Noise: 0.2

Peak table for sample 7 : Ohr_3 PolII Lib_2

Peak	Size [bp]	Conc. [pg/μl]	Molarity [pmol/l]	Observations
1	35	125.00	5,411.3	Lower Marker
2	187	22.64	183.4	
3	262	1,015.47	5,880.9	
4	272	1,467.38	8,181.1	
5	1,431	5.02	5.3	
6	1,727	5.07	4.4	
7	10,380	75.00	10.9	Upper Marker

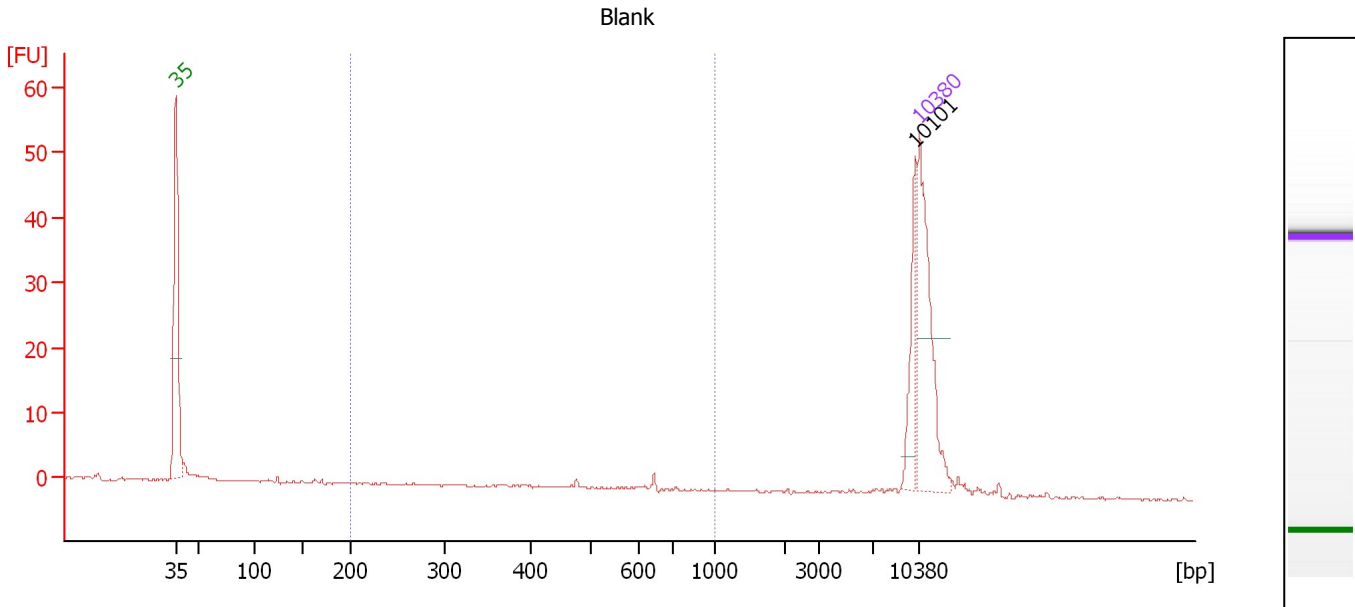
Region table for sample 7 : Ohr_3 PolII Lib_2

From [bp]	To [bp]	Average Size [bp]	Molarity [pmol/l]	Conc. [pg/μl]	Corr. Area	% of Total	Size distribution in CV [%]	Color
200	385	276	13,680.7	2,455.61	1,625.7	89	13.4	Blue

Assay Class: High Sensitivity DNA Assay
 Data Path: C:\...ents and Settings\Bioanalyzer\2012-07-10\2012-07-10_004.xad

Created: 7/10/2012 12:14:43 PM
 Modified: 7/10/2012 12:56:45 PM

Electropherogram Summary Continued ...



Overall Results for sample 8 : Blank

Number of peaks found: 1 Corr. Area 1: 4.6
 Noise: 0.1

Peak table for sample 8 : Blank

Peak	Size [bp]	Conc. [pg/μl]	Molarity [pmol/l]	Observations
1	35	125.00	5,411.3	Lower Marker
2	10,101	29.01	4.4	
3	10,380	75.00	10.9	Upper Marker

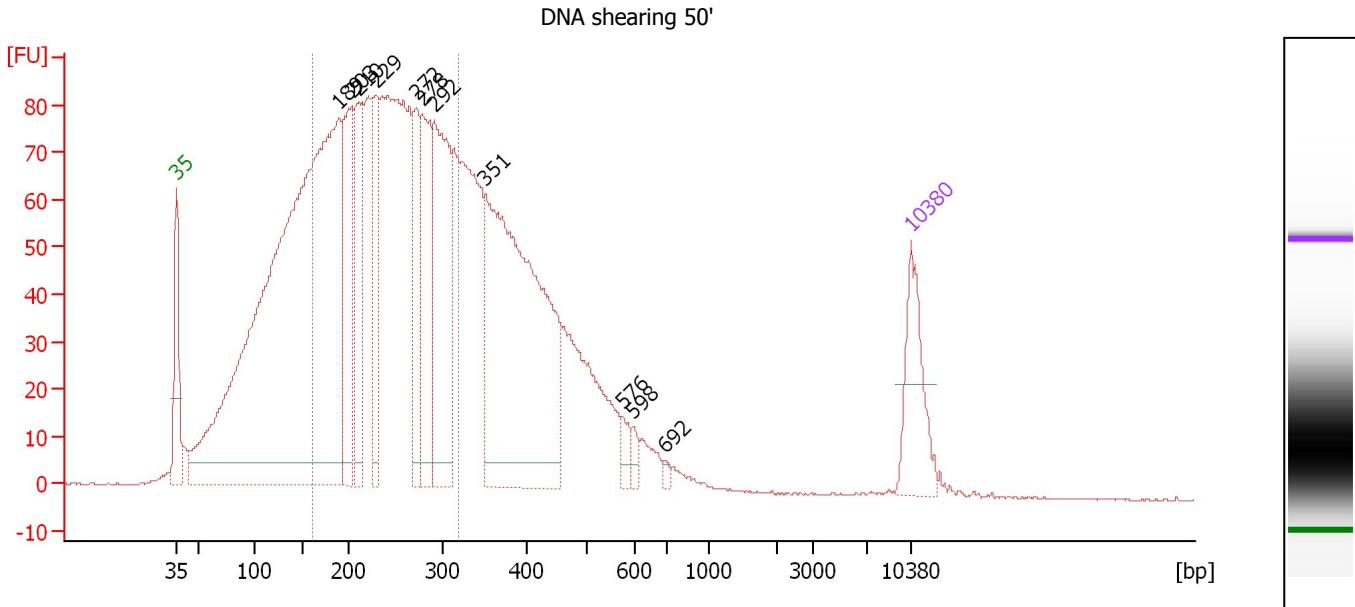
Region table for sample 8 : Blank

From [bp]	To [bp]	Average Size [bp]	Molarity [pmol/l]	Conc. [pg/μl]	Corr. Area	% of Total	Size distribution in CV [%]	Color
200	1,000	529	22.4	6.88	4.6	9	27.2	Blue

Assay Class: High Sensitivity DNA Assay
 Data Path: C:\...ents and Settings\Bioanalyzer\2012-07-10\2012-07-10_004.xad

Created: 7/10/2012 12:14:43 PM
 Modified: 7/10/2012 12:56:45 PM

Electropherogram Summary Continued ...



Overall Results for sample 9 : DNA shearing 50'

Number of peaks found: 11 Corr. Area 1: 1,731.3
 Noise: 0.1

Peak table for sample 9 : DNA shearing 50'

Peak	Size [bp]	Conc. [pg/μl]	Molarity [pmol/l]	Observations
1	35	125.00	5,411.3	Lower Marker
2	189	1,614.93	12,941.9	
3	203	213.68	1,597.9	
4	210	153.50	1,110.1	
5	229	138.92	919.1	
6	272	120.45	670.8	
7	278	182.27	994.2	
8	292	283.87	1,475.3	
9	351	624.60	2,692.6	
10	576	17.77	46.7	
11	598	11.65	29.5	
12	692	5.38	11.8	
13	10,380	75.00	10.9	Upper Marker

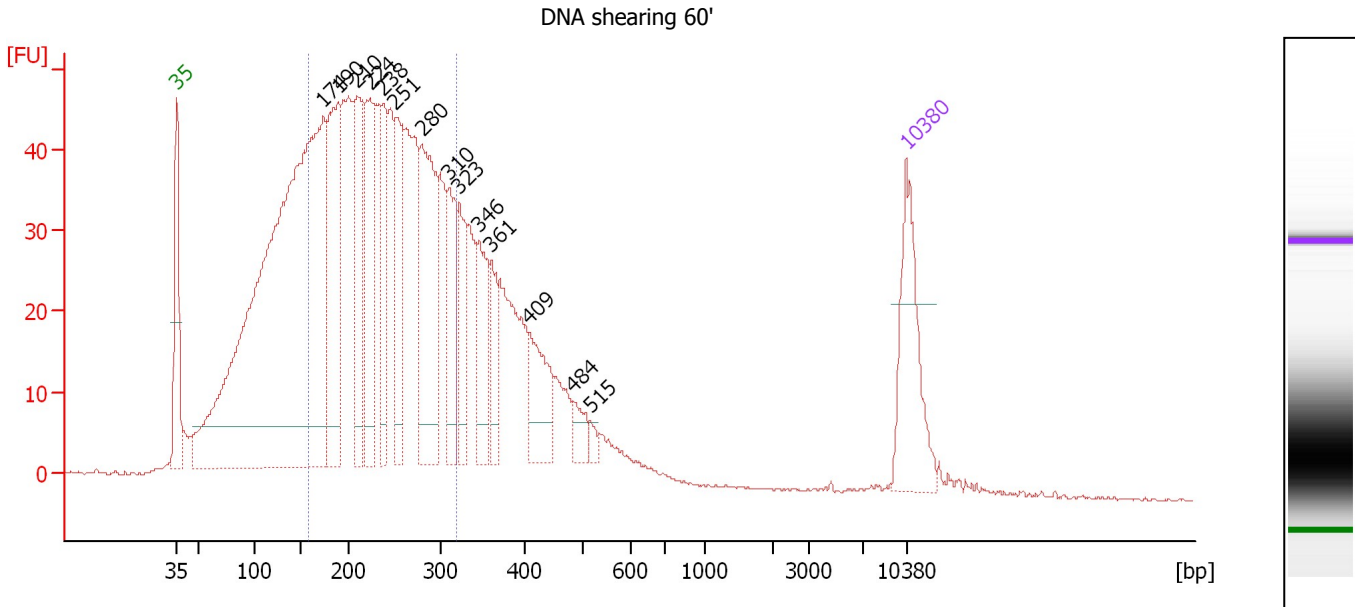
Region table for sample 9 : DNA shearing 50'

From [bp]	To [bp]	Average Size [bp]	Molarity [pmol/l]	Conc. [pg/μl]	Corr. Area	% of Total	Size distribution in CV [%]	Color
161	321	239	16,877.8	2,550.93	1,731.3	50	18.7	Blue

Assay Class: High Sensitivity DNA Assay
 Data Path: C:\...ents and Settings\Bioanalyzer\2012-07-10\2012-07-10_004.xad

Created: 7/10/2012 12:14:43 PM
 Modified: 7/10/2012 12:56:45 PM

Electropherogram Summary Continued ...



Overall Results for sample 10 : DNA shearing 60'

Number of peaks found: 14 Corr. Area 1: 979.2
 Noise: 0.2

Peak table for sample 10 : DNA shearing 60'

Peak	Size [bp]	Conc. [pg/μl]	Molarity [pmol/l]	Observations
1	35	125.00	5,411.3	Lower Marker
2	174	1,056.98	9,216.1	
3	190	193.49	1,546.0	
4	210	130.23	941.3	
5	224	124.60	842.5	
6	238	85.56	544.8	
7	251	97.72	589.4	
8	280	177.15	960.3	
9	310	78.63	384.5	
10	323	63.36	297.5	
11	346	69.13	302.5	
12	361	39.40	165.4	
13	409	62.73	232.5	
14	484	18.38	57.6	
15	515	6.47	19.1	
16	10,380	75.00	10.9	Upper Marker

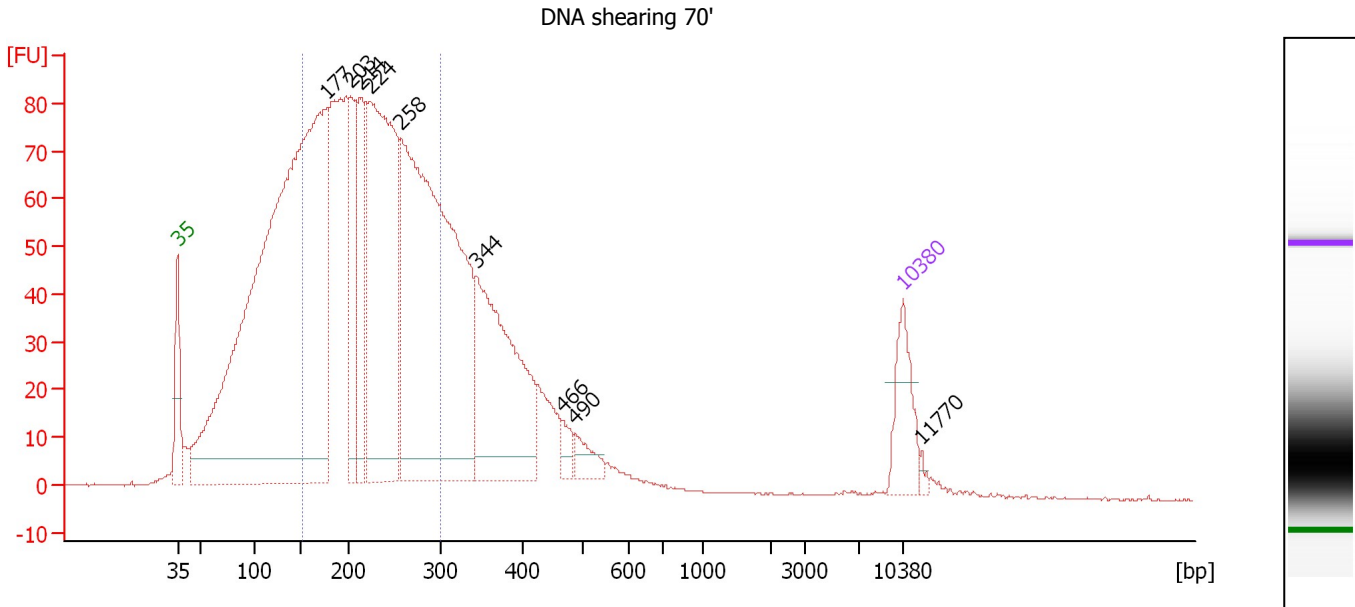
Region table for sample 10 : DNA shearing 60'

From [bp]	To [bp]	Average Size [bp]	Molarity [pmol/l]	Conc. [pg/μl]	Corr. Area	% of Total	Size distribution in CV [%]	Color
158	318	234	12,336.4	1,818.10	979.2	53	19.2	Blue

Assay Class: High Sensitivity DNA Assay
 Data Path: C:\...ents and Settings\Bioanalyzer\2012-07-10\2012-07-10_004.xad

Created: 7/10/2012 12:14:43 PM
 Modified: 7/10/2012 12:56:45 PM

Electropherogram Summary Continued ...



Overall Results for sample 11 : DNA shearing 70'

Number of peaks found: 9 Corr. Area 1: 1,600.3
 Noise: 0.1

Peak table for sample 11 : DNA shearing 70'

Peak	Size [bp]	Conc. [pg/μl]	Molarity [pmol/l]	Observations
1	35	125.00	5,411.3	Lower Marker
2	177	2,216.56	18,977.7	
3	203	184.96	1,382.9	
4	214	206.61	1,465.0	
5	224	794.99	5,387.8	
6	258	1,254.54	7,372.2	
7	344	449.30	1,979.7	
8	466	26.82	87.2	
9	490	39.08	120.9	
10	10,380	75.00	10.9	Upper Marker
11	11,770	0.00	0.0	

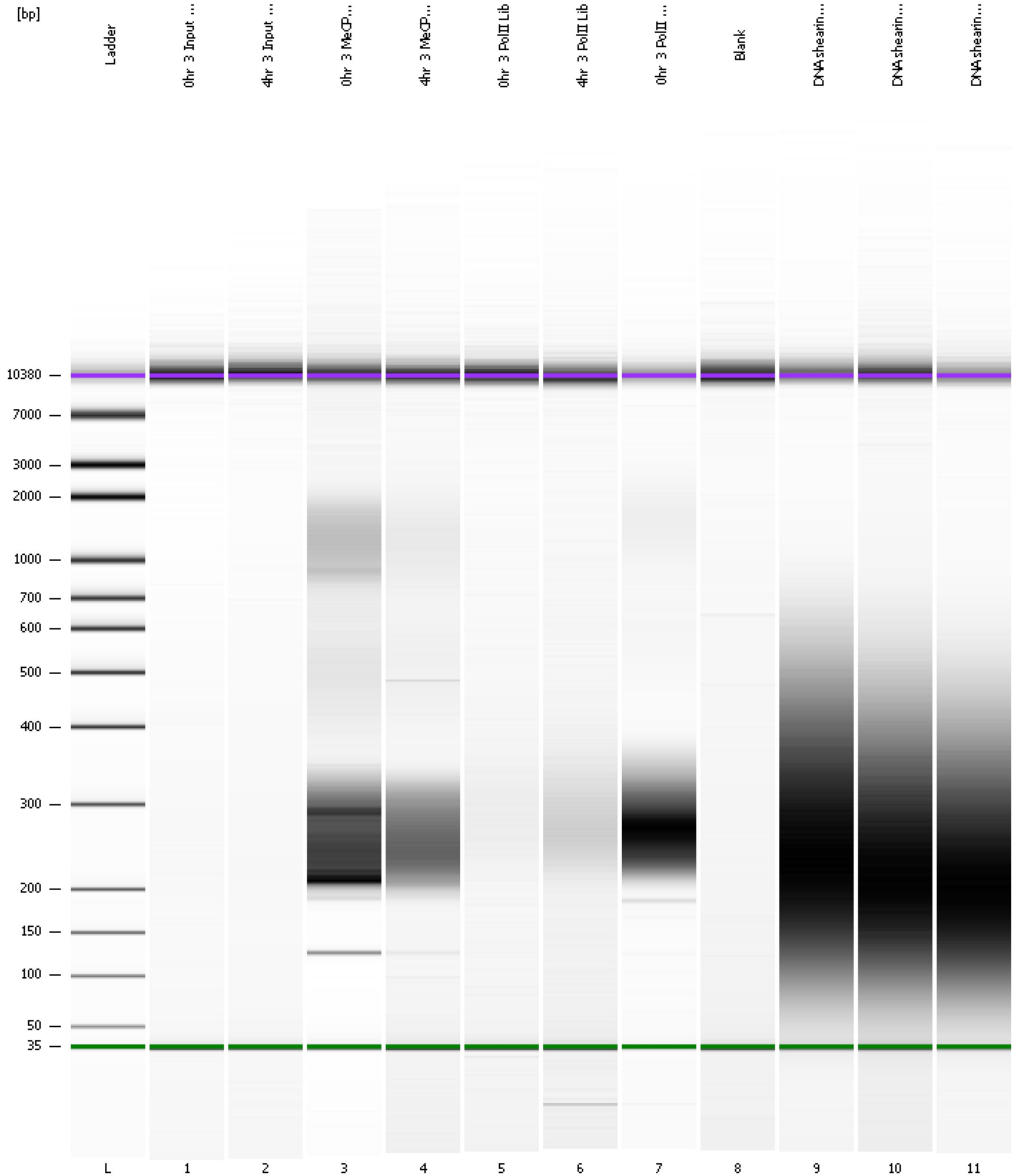
Region table for sample 11 : DNA shearing 70'

From [bp]	To [bp]	Average Size [bp]	Molarity [pmol/l]	Conc. [pg/μl]	Corr. Area	% of Total	Size distribution in CV [%]	Color
152	300	222	23,373.7	3,288.44	1,600.3	52	18.8	Blue

Assay Class: High Sensitivity DNA Assay
Data Path: C:\...ents and Settings\Bioanalyzer\2012-07-10\2012-07-10_004.xad

Created: 7/10/2012 12:14:43 PM
Modified: 7/10/2012 12:56:45 PM

Gel Image



Assay Class: High Sensitivity DNA Assay
 Data Path: C:\...ents and Settings\Bioanalyzer\2012-07-10\2012-07-10_004.xad

Created: 7/10/2012 12:14:43 PM
 Modified: 7/10/2012 12:56:45 PM

Run Logbook

Description	Number	Source	Category	Sub Category	Time	Time Zone	User	Host
Run ended on port 1 (Number of wells acquired: 12)		Instrument	Run		7/10/2012 12:56:03 PM	(GMT --07:00) Pacific Standard Time	UC Davis	D8XSMGH1
Run started on port 1 (File: C:\Documents and Settings\Bioanalyzer\2012-07-10\2012-07-10_004.xad)		Instrument	Run		7/10/2012 12:14:48 PM	(GMT --07:00) Pacific Standard Time	UC Davis	D8XSMGH1
Product Number : G2938B		Instrument	Run		7/10/2012 12:14:48 PM	(GMT --07:00) Pacific Standard Time	UC Davis	D8XSMGH1
Name :		Instrument	Run		7/10/2012 12:14:48 PM	(GMT --07:00) Pacific Standard Time	UC Davis	D8XSMGH1
Vendor : Agilent Technologies		Instrument	Run		7/10/2012 12:14:48 PM	(GMT --07:00) Pacific Standard Time	UC Davis	D8XSMGH1
Serial# : DE13701086		Instrument	Run		7/10/2012 12:14:48 PM	(GMT --07:00) Pacific Standard Time	UC Davis	D8XSMGH1
Firmware : C.01.069		Instrument	Run		7/10/2012 12:14:48 PM	(GMT --07:00) Pacific Standard Time	UC Davis	D8XSMGH1
Cartridge : Electrode		Instrument	Run		7/10/2012 12:14:48 PM	(GMT --07:00) Pacific Standard Time	UC Davis	D8XSMGH1