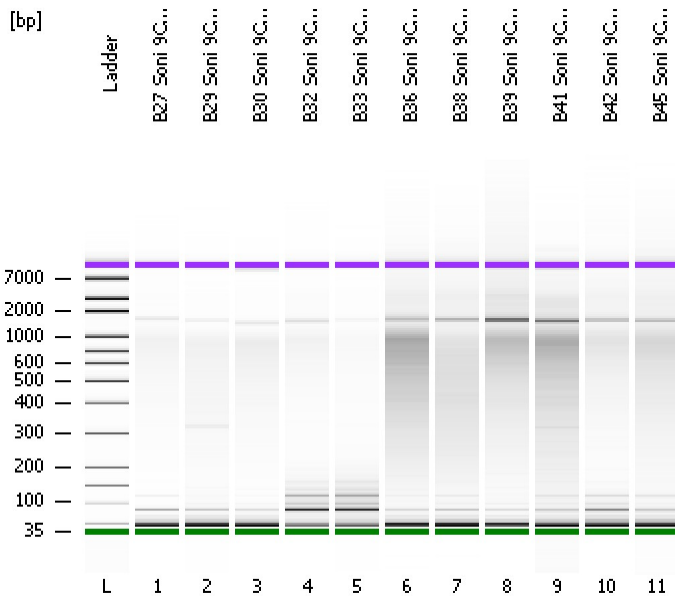


Assay Class: High Sensitivity DNA Assay
Data Path: C:\...ents and Settings\Bioanalyzer\2012-07-10\2012-07-10_005.xad

Created: 7/10/2012 1:14:50 PM
Modified: 7/10/2012 1:58:37 PM

Electrophoresis File Run Summary



Instrument Information:

Instrument Name: DE13701086 Firmware: C.01.069
Serial#: DE13701086 Type: G2938B

Assay Information:

Assay Origin Path: C:\Program Files\Agilent\2100 bioanalyzer\2100 expert\assays\dsDNA\High Sensitivity DNA.xsy
Assay Class: High Sensitivity DNA Assay
Version: 1.03
Assay Comments: Copyright © 2003-2010 Agilent Technologies

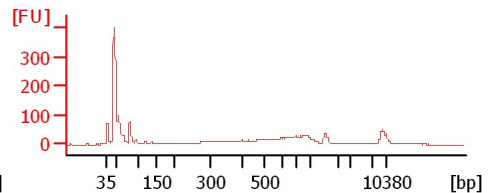
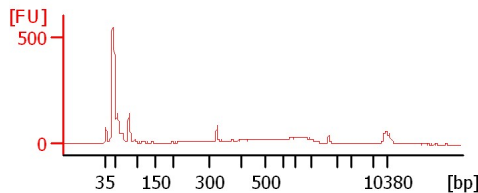
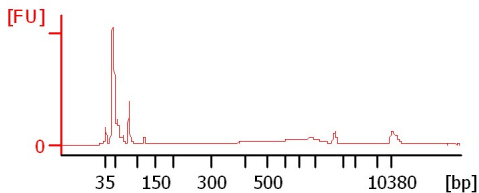
Chip Information:

Chip Lot #:
Reagent Kit Lot #:
Chip Comments:

B27 Soni 9Cycles 1:3

B29 Soni 9Cycles 1:3

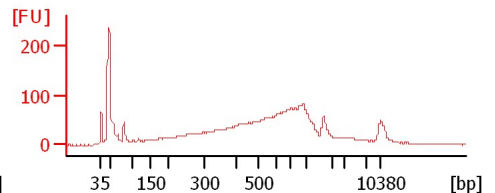
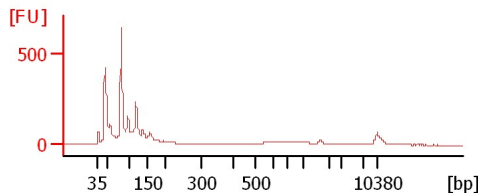
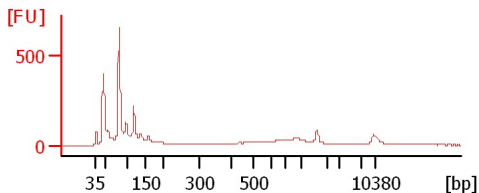
B30 Soni 9Cycles 1:4



B32 Soni 9Cycles 1:4

B33 Soni 9Cycles 1:4

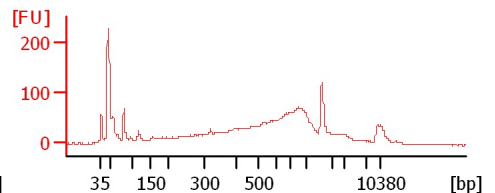
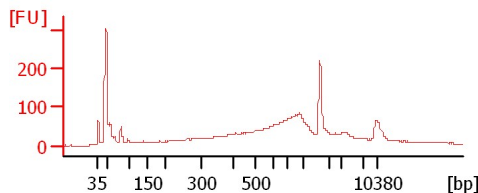
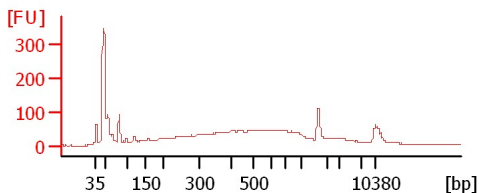
B36 Soni 9Cycles 1:4



B38 Soni 9Cycles 1:4

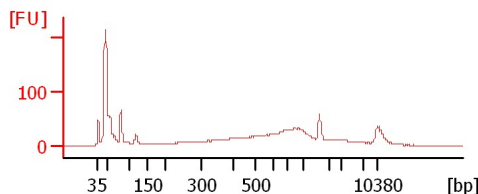
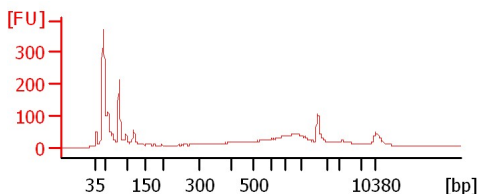
B39 Soni 9Cycles 1:4

B41 Soni 9Cycles 1:4



B42 Soni 9Cycles 1:4

B45 Soni 9Cycles 1:4



Assay Class: High Sensitivity DNA Assay
 Data Path: C:\...ents and Settings\Bioanalyzer\2012-07-10\2012-07-10_005.xad

Created: 7/10/2012 1:14:50 PM
 Modified: 7/10/2012 1:58:37 PM

Electrophoresis File Run Summary (Chip Summary)

Sample Name	Sample Comment	Rest. Digest	Status	Observation	Result Label	Result Color
B27 Soni 9Cycles 1:3		<input type="checkbox"/>	✓			
B29 Soni 9Cycles 1:3		<input type="checkbox"/>	✓			
B30 Soni 9Cycles 1:4		<input type="checkbox"/>	✓			
B32 Soni 9Cycles 1:4		<input type="checkbox"/>	✓			
B33 Soni 9Cycles 1:4		<input type="checkbox"/>	✓			
B36 Soni 9Cycles 1:4		<input type="checkbox"/>	✓			
B38 Soni 9Cycles 1:4		<input type="checkbox"/>	✓			
B39 Soni 9Cycles 1:4		<input type="checkbox"/>	✓			
B41 Soni 9Cycles 1:4		<input type="checkbox"/>	✓			
B42 Soni 9Cycles 1:4		<input type="checkbox"/>	✓			
B45 Soni 9Cycles 1:4		<input type="checkbox"/>	✓			
Ladder		<input type="checkbox"/>	✓			

Chip Lot #

Reagent Kit Lot #

Chip Comments :

Assay Class: High Sensitivity DNA Assay
Data Path: C:\...ents and Settings\Bioanalyzer\2012-07-10\2012-07-10_005.xad

Created: 7/10/2012 1:14:50 PM
Modified: 7/10/2012 1:58:37 PM

Electrophoresis Assay Details

General Analysis Settings

Number of Available Sample and Ladder Wells (Max.) : 12
Minimum Visible Range [s] : 32
Maximum Visible Range [s] : 138
Start Analysis Time Range [s] : 33
End Analysis Time Range [s] : 137.5
Ladder Concentration [pg/μl] : 1950
Uses Standard Area for Ladder Fragments
Lower Marker Concentration [pg/μl] : 125
Upper Marker Concentration [pg/μl] : 75
Used Upper Marker for Quantitation
Standard Curve Fit is Point to Point
Show Data Aligned to Lower and Upper Marker

Integrator Settings

Integration Start Time [s] : 33.05
Integration End Time [s] : 137
Slope Threshold : 0.8
Height Threshold [FU] : 5
Area Threshold : 0.1
Width Threshold [s] : 0.6
Baseline Plateau [s] : 0.5

Filter Settings

Filter Width [s] : 0.5
Polynomial Order : 4

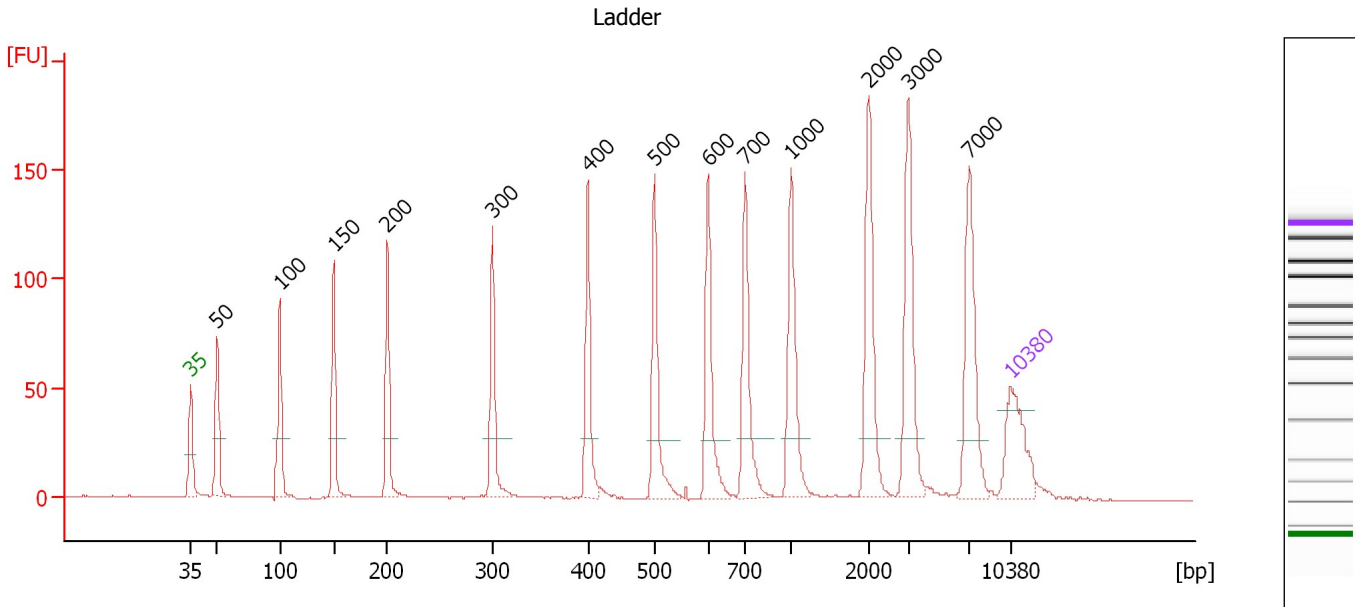
Ladder

Ladder Peak	Size	Area
1	35	160
2	50	210
3	100	208
4	150	221
5	200	242
6	300	270
7	400	305
8	500	306
9	600	336
10	700	321
11	1000	366
12	2000	413
13	3000	411
14	7000	400
15	10380	214

Assay Class: High Sensitivity DNA Assay
 Data Path: C:\...ents and Settings\Bioanalyzer\2012-07-10\2012-07-10_005.xad

Created: 7/10/2012 1:14:50 PM
 Modified: 7/10/2012 1:58:37 PM

Electropherogram Summary



Overall Results for Ladder

Noise: 0.1

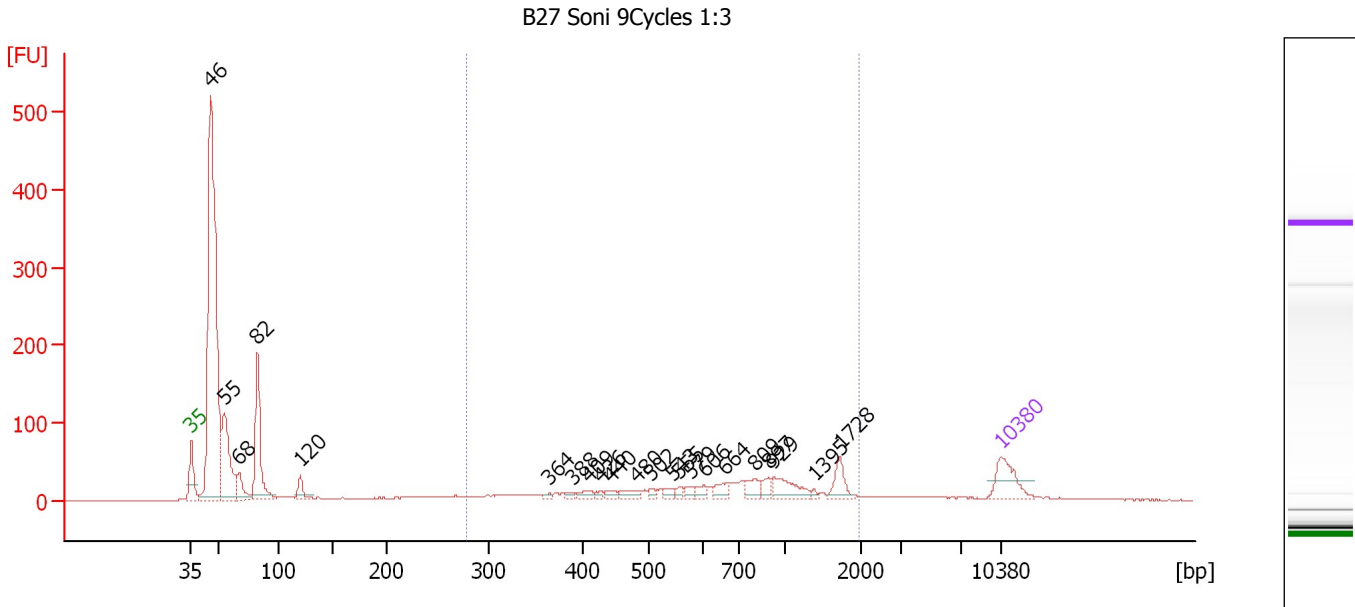
Peak table for Ladder

Peak	Size [bp]	Conc. [pg/μl]	Molarity [pmol/l]	Observations
1	35	125.00	5,411.3	Lower Marker
2	50	150.00	4,545.5	Ladder Peak
3	100	150.00	2,272.7	Ladder Peak
4	150	150.00	1,515.2	Ladder Peak
5	200	150.00	1,136.4	Ladder Peak
6	300	150.00	757.6	Ladder Peak
7	400	150.00	568.2	Ladder Peak
8	500	150.00	454.5	Ladder Peak
9	600	150.00	378.8	Ladder Peak
10	700	150.00	324.7	Ladder Peak
11	1,000	150.00	227.3	Ladder Peak
12	2,000	150.00	113.6	Ladder Peak
13	3,000	150.00	75.8	Ladder Peak
14	7,000	150.00	32.5	Ladder Peak
15	10,380	75.00	10.9	Upper Marker

Assay Class: High Sensitivity DNA Assay
 Data Path: C:\...ents and Settings\Bioanalyzer\2012-07-10\2012-07-10_005.xad

Created: 7/10/2012 1:14:50 PM
 Modified: 7/10/2012 1:58:37 PM

Electropherogram Summary Continued ...



Overall Results for sample 1 : B27 Soni 9Cycles 1:3

Number of peaks found: 22 Corr. Area 1: 609.4
 Noise: 0.3

Peak table for sample 1 : B27 Soni 9Cycles 1:3

Peak	Size [bp]	Conc. [pg/μl]	Molarity [pmol/l]	Observations
1	35	125.00	5,411.3	Lower Marker
2	46	1,605.22	52,947.6	
3	55	335.10	9,154.8	
4	68	87.44	1,960.6	
5	82	331.97	6,112.6	
6	120	49.90	632.3	
7	364	7.22	30.1	
8	388	9.66	37.7	
9	409	18.18	67.3	
10	426	9.21	32.8	
11	440	16.66	57.4	
12	480	27.21	86.0	
13	502	11.65	35.2	
14	543	16.85	47.0	
15	555	11.38	31.0	
16	579	15.11	39.6	
17	606	19.28	48.2	
18	664	30.26	69.1	
19	809	36.89	69.1	
20	897	21.59	36.5	
21	929	68.32	111.4	
22	1,395	5.49	6.0	
23	1,728	46.24	40.6	
24	10,380	75.00	10.9	Upper Marker

Assay Class: High Sensitivity DNA Assay
Data Path: C:\...ents and Settings\Bioanalyzer\2012-07-10\2012-07-10_005.xad

Created: 7/10/2012 1:14:50 PM
Modified: 7/10/2012 1:58:37 PM

Electropherogram Summary Continued ...

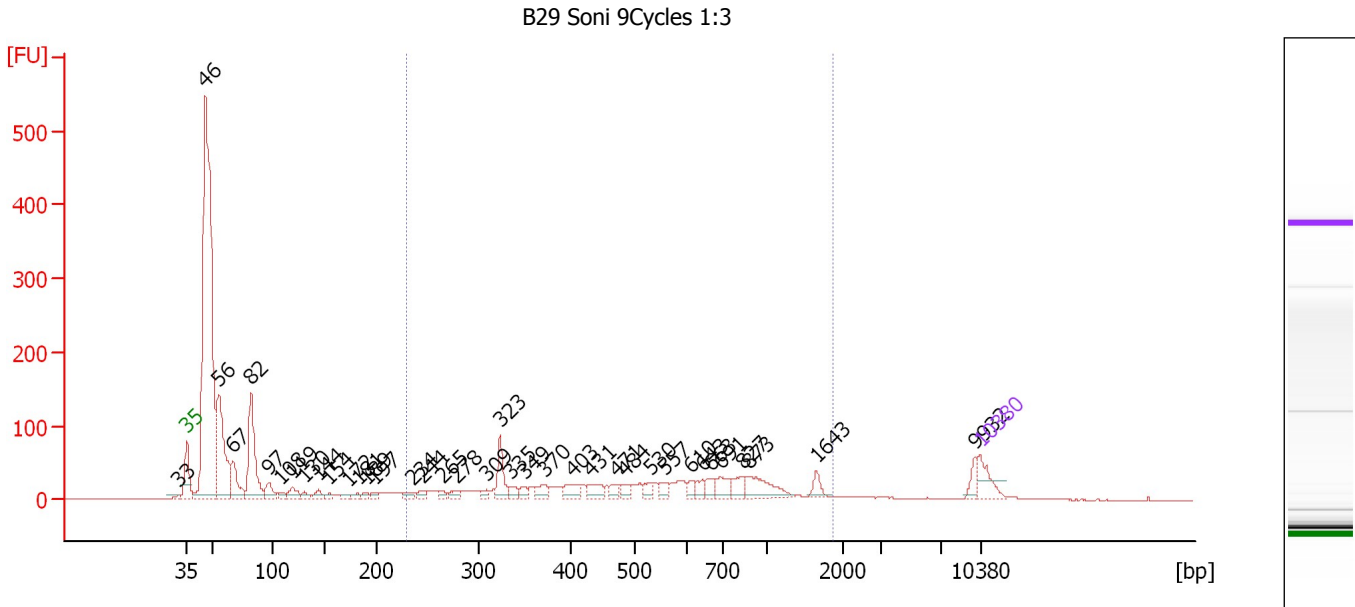
... Region table for sample 1 : B27 Soni 9Cycles 1:3

From [bp]	To [bp]	Average Size [bp]	Molarity [pmol/l]	Conc. [pg/μl]	Corr. Area	% of Total	Size distribution in CV [%]	Color
279	1,970	793	1,698.7	633.06	609.4	27	54.6	■

Assay Class: High Sensitivity DNA Assay
 Data Path: C:\...ents and Settings\Bioanalyzer\2012-07-10\2012-07-10_005.xad

Created: 7/10/2012 1:14:50 PM
 Modified: 7/10/2012 1:58:37 PM

Electropherogram Summary Continued ...



Overall Results for sample 2 : B29 Soni 9Cycles 1:3

Number of peaks found: 38 Corr. Area 1: 959.5
 Noise: 0.3

Peak table for sample 2 : B29 Soni 9Cycles 1:3

Peak	Size [bp]	Conc. [pg/μl]	Molarity [pmol/l]	Observations
1	33	0.00	0.0	
2	35	125.00	5,411.3	Lower Marker
3	46	2,667.52	88,159.0	
4	56	639.41	17,437.4	
5	67	184.36	4,139.8	
6	82	466.43	8,613.8	
7	97	81.64	1,280.3	
8	108	28.76	404.1	
9	119	63.96	813.7	
10	130	25.97	301.9	
11	144	34.43	363.2	
12	154	18.58	182.3	
13	172	20.73	182.3	
14	181	20.24	169.0	
15	189	18.18	145.6	
16	197	23.31	179.5	
17	234	30.25	195.4	
18	244	26.65	165.2	
19	265	21.85	125.0	
20	278	33.10	180.4	
21	309	24.18	118.7	
22	323	126.07	591.2	
23	335	34.30	155.0	
24	349	29.19	126.7	
25	370	47.09	192.6	
26	403	60.78	228.5	

Assay Class: High Sensitivity DNA Assay
 Data Path: C:\...ents and Settings\Bioanalyzer\2012-07-10\2012-07-10_005.xad

Created: 7/10/2012 1:14:50 PM
 Modified: 7/10/2012 1:58:37 PM

Electropherogram Summary Continued ...

... Peak table for sample 2 : B29 Soni 9Cycles 1:3

Peak	Size [bp]	Conc. [pg/µl]	Molarity [pmol/l]	Observations
27	431	57.31	201.4	
28	471	32.61	104.9	
29	484	36.81	115.2	
30	530	34.38	98.3	
31	557	32.07	87.3	
32	610	25.25	62.7	
33	643	32.12	75.7	
34	663	35.72	81.6	
35	691	64.98	142.4	
36	827	59.27	108.6	
37	873	120.89	209.7	
38	1,643	35.99	33.2	
39	9,932	36.30	5.5	
40	▶ 10,380	75.00	10.9	Upper Marker

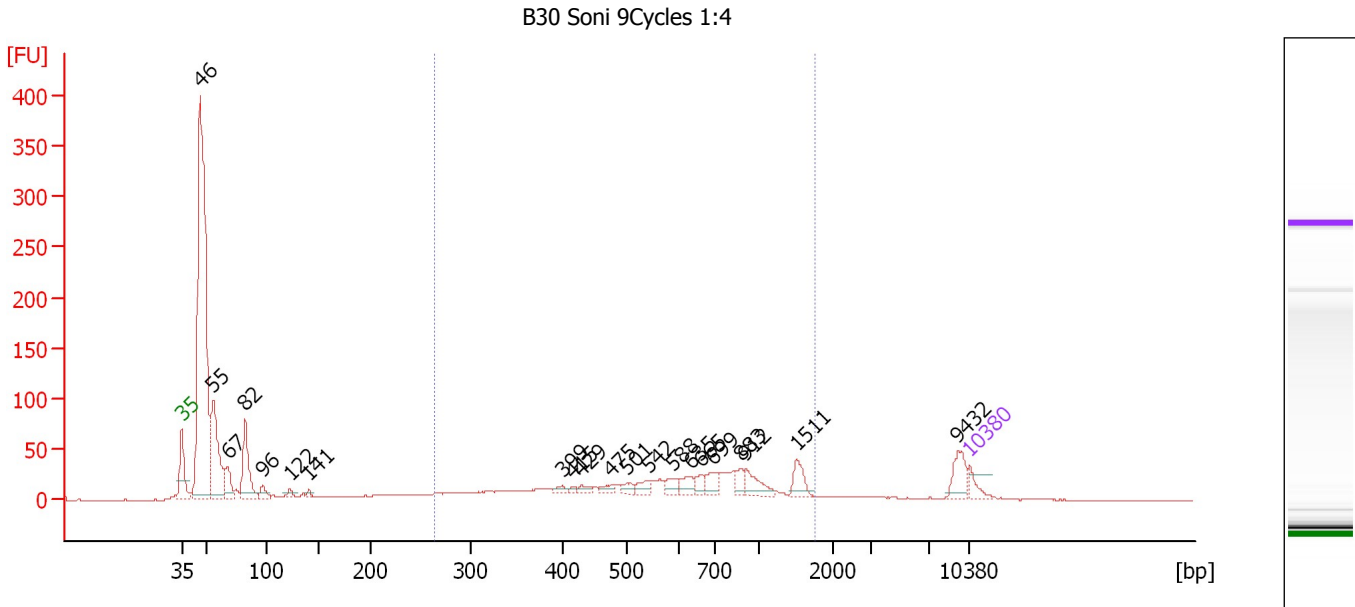
Region table for sample 2 : B29 Soni 9Cycles 1:3

From [bp]	To [bp]	Average Size [bp]	Molarity [pmol/l]	Conc. [pg/µl]	Corr. Area	% of Total	Size distribution in CV [%]	Color
230	1,862	609	5,244.0	1,524.84	959.5	32	56.1	■

Assay Class: High Sensitivity DNA Assay
 Data Path: C:\...ents and Settings\Bioanalyzer\2012-07-10\2012-07-10_005.xad

Created: 7/10/2012 1:14:50 PM
 Modified: 7/10/2012 1:58:37 PM

Electropherogram Summary Continued ...



Overall Results for sample 3 : B30 Soni 9Cycles 1:4

Number of peaks found: 21 Corr. Area 1: 653.2
 Noise: 0.3

Peak table for sample 3 : B30 Soni 9Cycles 1:4

Peak	Size [bp]	Conc. [pg/μl]	Molarity [pmol/l]	Observations
1	35	125.00	5,411.3	Lower Marker
2	46	4,968.65	163,894.0	
3	55	1,094.58	30,215.5	
4	67	274.17	6,209.2	
5	82	625.56	11,617.2	
6	96	104.46	1,644.0	
7	122	54.80	680.7	
8	141	36.19	390.2	
9	399	45.18	171.8	
10	415	21.61	79.0	
11	429	48.38	170.9	
12	475	57.88	184.8	
13	501	63.90	193.4	
14	542	80.03	223.7	
15	588	89.73	231.2	
16	635	106.24	253.5	
17	665	79.54	181.3	
18	699	112.38	243.6	
19	883	79.63	136.7	
20	912	156.48	260.1	
21	1,511	131.47	131.8	
22	9,432	168.82	27.1	
23	10,380	75.00	10.9	Upper Marker

Assay Class: High Sensitivity DNA Assay
Data Path: C:\...ents and Settings\Bioanalyzer\2012-07-10\2012-07-10_005.xad

Created: 7/10/2012 1:14:50 PM
Modified: 7/10/2012 1:58:37 PM

Electropherogram Summary Continued ...

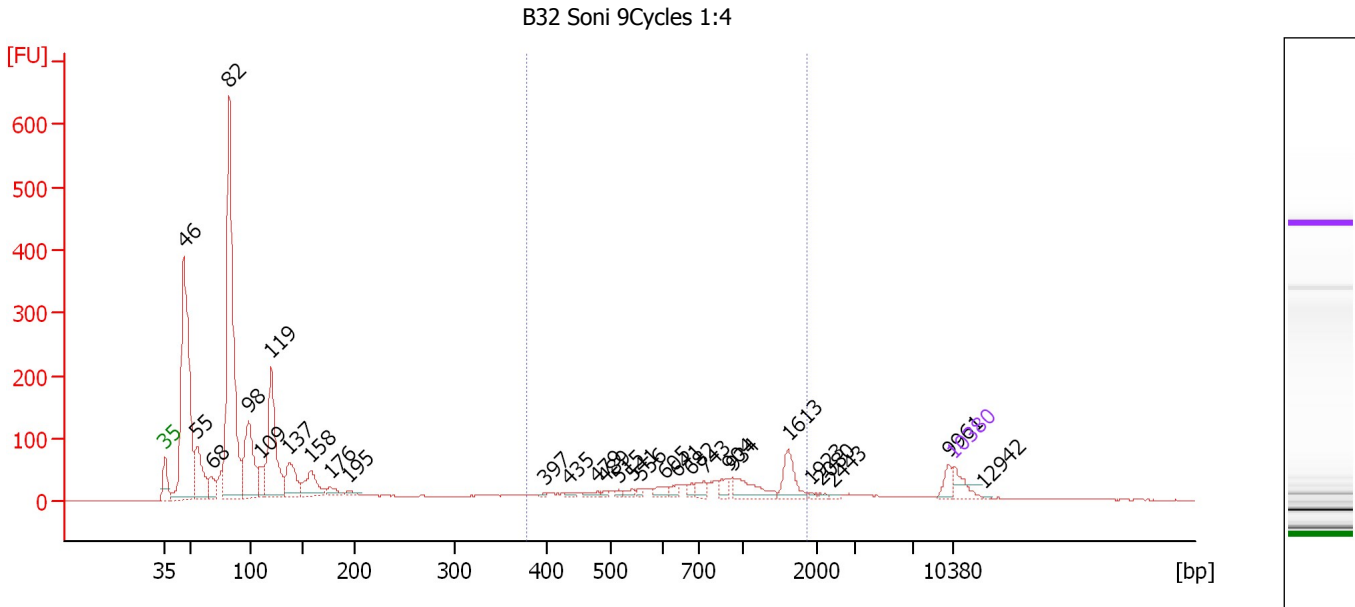
... Region table for sample 3 : B30 Soni 9Cycles 1:4

From [bp]	To [bp]	Average Size [bp]	Molarity [pmol/l]	Conc. [pg/μl]	Corr. Area	% of Total	Size distribution in CV [%]	Color
263	1,763	691	7,882.0	2,682.62	653.2	32	50.8	■

Assay Class: High Sensitivity DNA Assay
 Data Path: C:\...ents and Settings\Bioanalyzer\2012-07-10\2012-07-10_005.xad

Created: 7/10/2012 1:14:50 PM
 Modified: 7/10/2012 1:58:37 PM

Electropherogram Summary Continued ...



Overall Results for sample 4 : B32 Soni 9Cycles 1:4

Number of peaks found: 30 Corr. Area 1: 619.9
 Noise: 0.3

Peak table for sample 4 : B32 Soni 9Cycles 1:4

Peak	Size [bp]	Conc. [pg/μl]	Molarity [pmol/l]	Observations
1	35	125.00	5,411.3	Lower Marker
2	46	2,017.15	66,495.0	
3	55	427.44	11,717.1	
4	68	139.15	3,115.5	
5	82	2,357.81	43,613.2	
6	98	616.09	9,481.9	
7	109	166.84	2,311.2	
8	119	823.13	10,438.0	
9	137	279.49	3,090.1	
10	158	231.22	2,212.7	
11	176	58.40	501.6	
12	195	26.09	202.6	
13	397	9.41	35.9	
14	435	16.09	56.0	
15	479	27.32	86.4	
16	489	13.85	42.9	
17	515	14.61	43.0	
18	541	27.39	76.7	
19	556	19.02	51.8	
20	605	44.05	110.3	
21	641	31.83	75.3	
22	682	33.07	73.5	
23	743	47.41	96.7	
24	904	47.34	79.4	
25	934	136.03	220.7	
26	1,613	130.85	122.9	

Assay Class: High Sensitivity DNA Assay
 Data Path: C:\...ents and Settings\Bioanalyzer\2012-07-10\2012-07-10_005.xad


Created: 7/10/2012 1:14:50 PM
 Modified: 7/10/2012 1:58:37 PM

Electropherogram Summary Continued ...

... Peak table for sample 4 : B32 Soni 9Cycles 1:4

Peak	Size [bp]	Conc. [pg/μl]	Molarity [pmol/l]	Observations
27	1,923	6.61	5.2	
28	2,080	8.41	6.1	
29	2,443	9.81	6.1	
30	9,961	52.90	8.0	
31	10,380	75.00	10.9	Upper Marker
32	12,942	0.00	0.0	

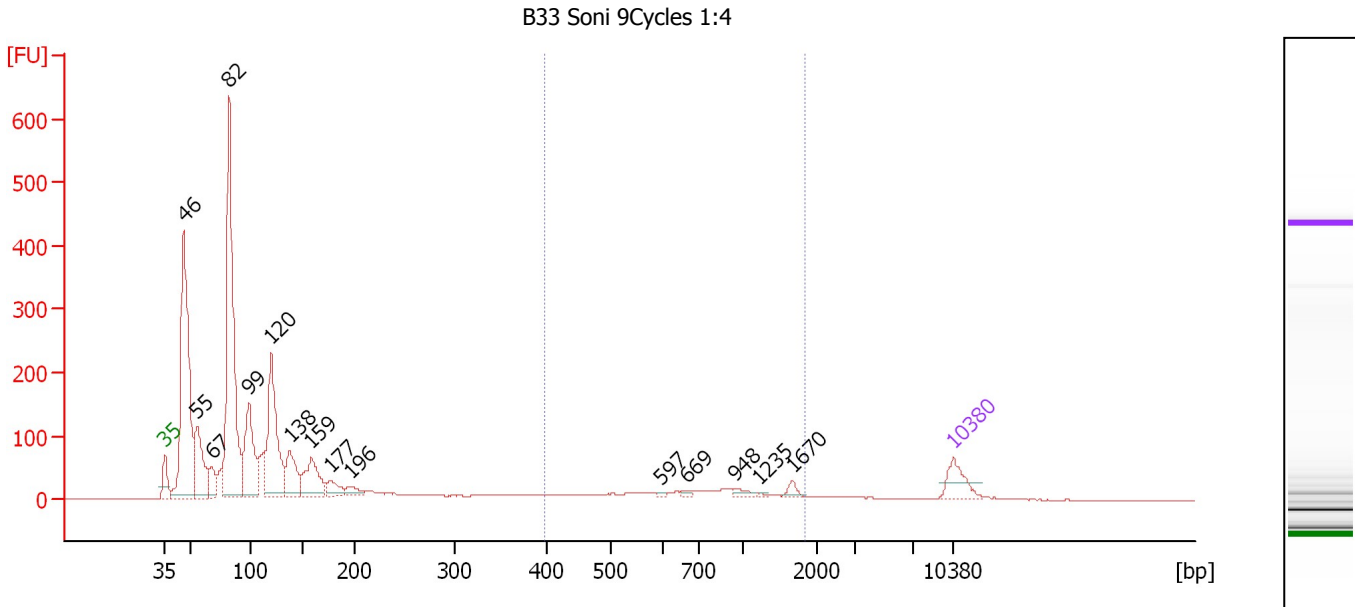
Region table for sample 4 : B32 Soni 9Cycles 1:4

From [bp]	To [bp]	Average Size [bp]	Molarity [pmol/l]	Conc. [pg/μl]	Corr. Area	% of Total	Size distribution in CV [%]	Color
378	1,862	895	2,228.9	1,013.64	619.9	16	47.3	

Assay Class: High Sensitivity DNA Assay
 Data Path: C:\...ents and Settings\Bioanalyzer\2012-07-10\2012-07-10_005.xad

Created: 7/10/2012 1:14:50 PM
 Modified: 7/10/2012 1:58:37 PM

Electropherogram Summary Continued ...



Overall Results for sample 5 : B33 Soni 9Cycles 1:4

Number of peaks found: 15 Corr. Area 1: 324.2
 Noise: 0.5

Peak table for sample 5 : B33 Soni 9Cycles 1:4

Peak	Size [bp]	Conc. [pg/μl]	Molarity [pmol/l]	Observations
1	35	125.00	5,411.3	Lower Marker
2	46	1,257.26	41,558.7	
3	55	357.82	9,804.2	
4	67	102.33	2,298.4	
5	82	1,395.88	25,804.2	
6	99	428.02	6,563.7	
7	120	609.98	7,717.9	
8	138	211.89	2,332.7	
9	159	230.22	2,197.1	
10	177	75.43	647.0	
11	196	47.65	368.1	
12	597	6.20	15.8	
13	669	9.09	20.6	
14	948	20.02	32.0	
15	1,235	4.40	5.4	
16	1,670	19.27	17.5	
17	10,380	75.00	10.9	Upper Marker

Region table for sample 5 : B33 Soni 9Cycles 1:4

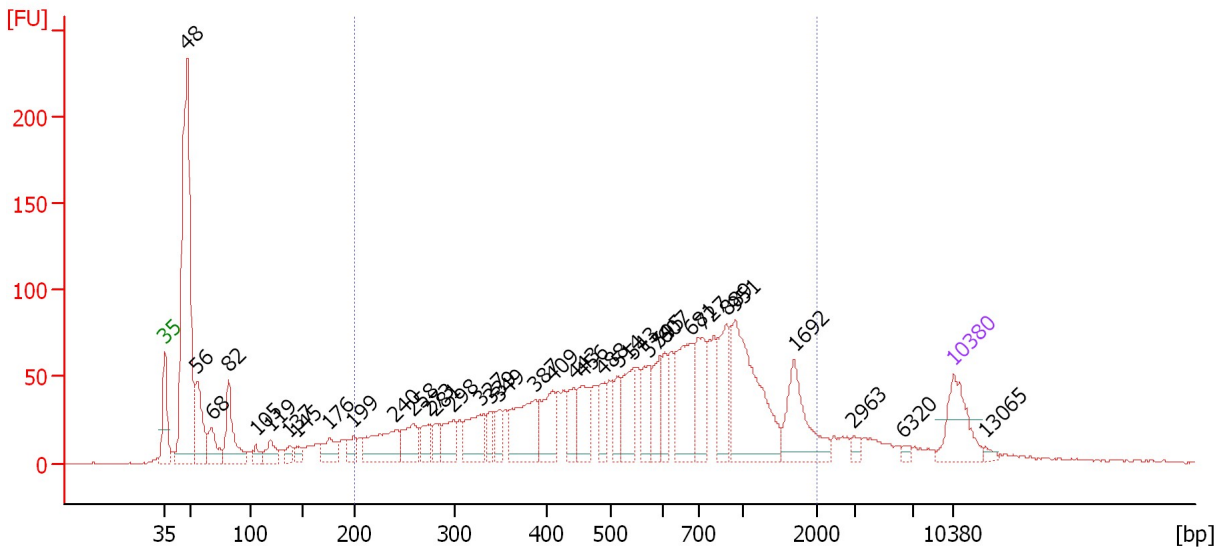
From [bp]	To [bp]	Average Size [bp]	Molarity [pmol/l]	Conc. [pg/μl]	Corr. Area	% of Total	Size distribution in CV [%]	Color
398	1,848	844	717.5	316.76	324.2	8	47.1	Blue

Assay Class: High Sensitivity DNA Assay
 Data Path: C:\...ents and Settings\Bioanalyzer\2012-07-10\2012-07-10_005.xad

Created: 7/10/2012 1:14:50 PM
 Modified: 7/10/2012 1:58:37 PM

Electropherogram Summary Continued ...

B36 Soni 9Cycles 1:4



Overall Results for sample 6 : B36 Soni 9Cycles 1:4

Number of peaks found: 36 Corr. Area 1: 2,044.0
 Noise: 0.5

Peak table for sample 6 : B36 Soni 9Cycles 1:4

Peak	Size [bp]	Conc. [pg/μl]	Molarity [pmol/l]	Observations
1	35	125.00	5,411.3	Lower Marker
2	48	780.20	24,655.4	
3	56	138.29	3,769.6	
4	68	68.80	1,535.6	
5	82	123.30	2,289.7	
6	105	23.60	340.6	
7	119	41.36	525.7	
8	137	18.73	206.7	
9	145	22.99	240.3	
10	176	51.05	439.0	
11	199	32.77	249.3	
12	240	117.35	742.1	
13	258	71.26	419.2	
14	273	43.77	243.1	
15	281	31.15	168.2	
16	298	66.82	339.7	
17	327	89.05	412.8	
18	339	32.80	146.8	
19	349	35.83	155.8	
20	387	140.12	547.9	
21	409	83.39	309.2	
22	443	49.77	170.2	
23	456	72.73	241.5	
24	488	48.27	149.8	
25	514	43.59	128.5	
26	543	85.60	238.9	

Assay Class: High Sensitivity DNA Assay
 Data Path: C:\...ents and Settings\Bioanalyzer\2012-07-10\2012-07-10_005.xad

Created: 7/10/2012 1:14:50 PM
 Modified: 7/10/2012 1:58:37 PM

Electropherogram Summary Continued ...

... Peak table for sample 6 : B36 Soni 9Cycles 1:4

Peak	Size [bp]	Conc. [pg/µl]	Molarity [pmol/l]	Observations
27	574	65.98	174.2	
28	595	60.37	153.8	
29	607	49.25	123.0	
30	681	142.88	317.8	
31	727	94.22	196.3	
32	889	87.00	148.2	
33	951	244.77	389.9	
34	1,692	106.65	95.5	
35	2,963	10.34	5.3	
36	6,320	6.81	1.6	
37	10,380	75.00	10.9	Upper Marker
38	13,065	0.00	0.0	

Region table for sample 6 : B36 Soni 9Cycles 1:4

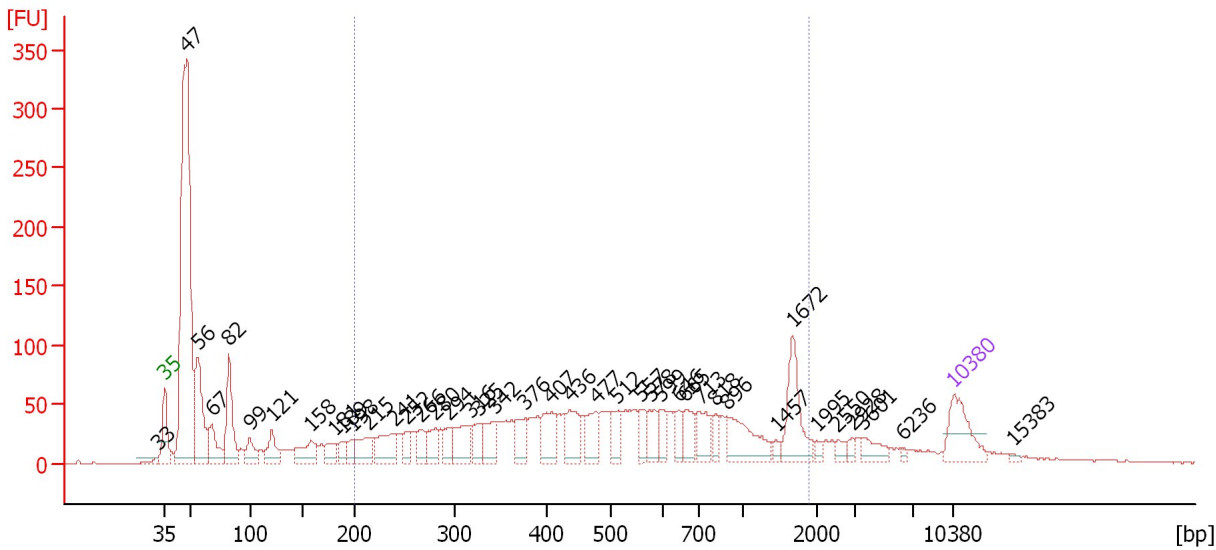
From [bp]	To [bp]	Average Size [bp]	Molarity [pmol/l]	Conc. [pg/µl]	Corr. Area	% of Total	Size distribution in CV [%]	Color
200	1,991	674	7,549.7	2,298.54	2,044.0	67	57.2	

Assay Class: High Sensitivity DNA Assay
 Data Path: C:\...ents and Settings\Bioanalyzer\2012-07-10\2012-07-10_005.xad

Created: 7/10/2012 1:14:50 PM
 Modified: 7/10/2012 1:58:37 PM

Electropherogram Summary Continued ...

B38 Soni 9Cycles 1:4



Overall Results for sample 7 : B38 Soni 9Cycles 1:4

Number of peaks found: 41 Corr. Area 1: 1,826.5
 Noise: 0.4

Peak table for sample 7 : B38 Soni 9Cycles 1:4

Peak	Size [bp]	Conc. [pg/μl]	Molarity [pmol/l]	Observations
1	33	0.00	0.0	
2	35	125.00	5,411.3	Lower Marker
3	47	1,030.09	32,897.1	
4	56	218.58	5,920.4	
5	67	90.23	2,027.4	
6	82	158.86	2,942.2	
7	99	47.63	728.6	
8	121	61.61	774.3	
9	158	72.25	691.7	
10	181	41.63	348.4	
11	189	27.23	218.5	
12	198	26.03	199.0	
13	215	62.24	439.3	
14	241	90.30	568.0	
15	252	33.71	202.5	
16	266	36.51	208.0	
17	280	50.16	271.3	
18	294	38.59	198.6	
19	316	72.21	345.9	
20	325	37.59	175.2	
21	342	64.57	286.0	
22	376	56.69	228.2	
23	407	74.41	277.2	
24	436	66.49	230.9	
25	477	58.02	184.4	
26	512	48.08	142.2	

Assay Class: High Sensitivity DNA Assay
 Data Path: C:\...ents and Settings\Bioanalyzer\2012-07-10\2012-07-10_005.xad

Created: 7/10/2012 1:14:50 PM
 Modified: 7/10/2012 1:58:37 PM

Electropherogram Summary Continued ...

... Peak table for sample 7 : B38 Soni 9Cycles 1:4

Peak	Size [bp]	Conc. [pg/µl]	Molarity [pmol/l]	Observations
27	557	38.62	105.1	
28	578	42.00	110.0	
29	599	38.50	97.5	
30	646	31.42	73.7	
31	665	49.21	112.1	
32	713	53.79	114.4	
33	818	25.09	46.4	
34	896	100.57	170.0	
35	1,457	10.77	11.2	
36	1,672	100.71	91.3	
37	1,995	8.54	6.5	
38	2,550	13.03	7.7	
39	2,928	9.56	4.9	
40	3,601	27.31	11.5	
41	6,236	5.00	1.2	
42	10,380	75.00	10.9	Upper Marker
43	15,383	0.00	0.0	

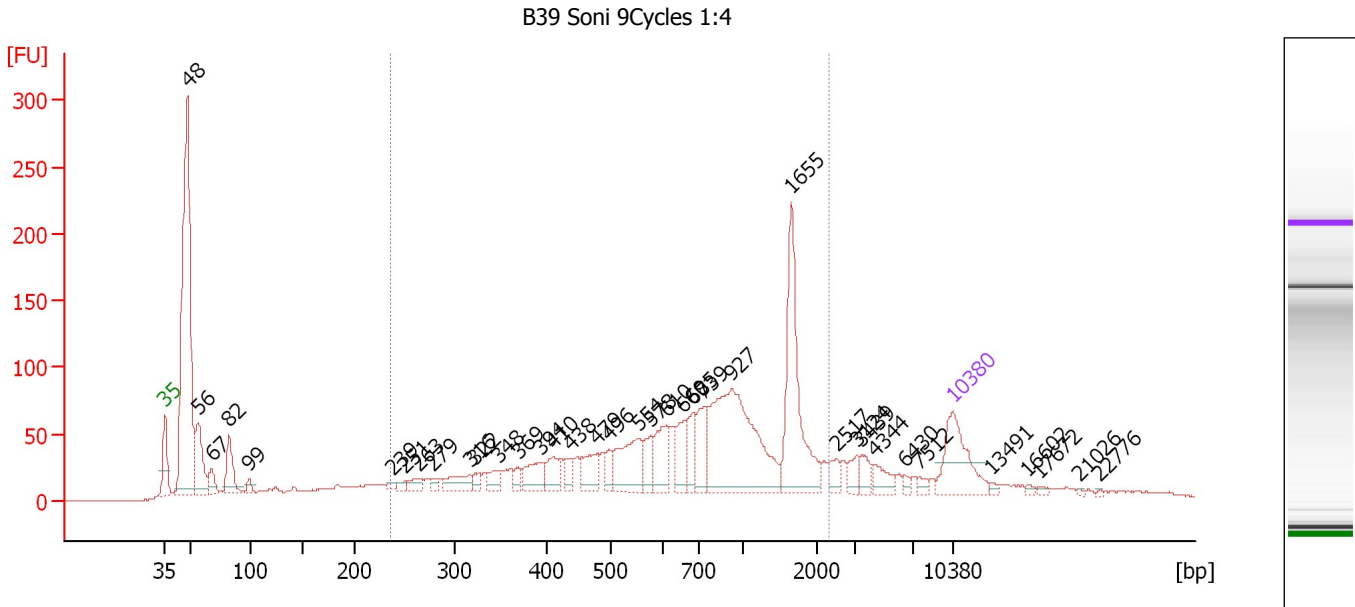
Region table for sample 7 : B38 Soni 9Cycles 1:4

From [bp]	To [bp]	Average Size [bp]	Molarity [pmol/l]	Conc. [pg/µl]	Corr. Area	% of Total	Size distribution in CV [%]	Color
200	1,890	625	6,493.3	1,763.21	1,826.5	54	65.9	■

Assay Class: High Sensitivity DNA Assay
 Data Path: C:\...ents and Settings\Bioanalyzer\2012-07-10\2012-07-10_005.xad

Created: 7/10/2012 1:14:50 PM
 Modified: 7/10/2012 1:58:37 PM

Electropherogram Summary Continued ...



Overall Results for sample 8 : B39 Soni 9Cycles 1:4

Number of peaks found: 37 Corr. Area 1: 1,804.5
 Noise: 0.4

Peak table for sample 8 : B39 Soni 9Cycles 1:4

Peak	Size [bp]	Conc. [pg/μl]	Molarity [pmol/l]	Observations
1	35	125.00	5,411.3	Lower Marker
2	48	639.09	20,120.7	
3	56	100.88	2,708.2	
4	67	29.42	660.7	
5	82	65.78	1,217.8	
6	99	10.75	165.2	
7	239	6.72	42.6	
8	251	7.65	46.2	
9	263	15.29	88.0	
10	279	8.09	44.0	
11	316	32.63	156.5	
12	322	12.73	60.0	
13	348	21.03	91.6	
14	369	13.62	56.0	
15	394	43.32	166.7	
16	410	33.04	122.2	
17	438	20.44	70.8	
18	479	44.83	141.8	
19	496	20.02	61.2	
20	554	86.17	235.5	
21	578	30.56	80.1	
22	610	54.93	136.4	
23	660	40.52	93.1	
24	685	39.84	88.1	
25	739	47.69	97.8	
26	927	263.82	431.3	

Assay Class: High Sensitivity DNA Assay
 Data Path: C:\...ents and Settings\Bioanalyzer\2012-07-10\2012-07-10_005.xad


Created: 7/10/2012 1:14:50 PM
 Modified: 7/10/2012 1:58:37 PM

Electropherogram Summary Continued ...

... Peak table for sample 8 : B39 Soni 9Cycles 1:4

Peak	Size [bp]	Conc. [pg/μl]	Molarity [pmol/l]	Observations
27	1,655	164.51	150.6	
28	2,517	15.51	9.3	
29	3,124	15.28	7.4	
30	3,439	17.08	7.5	
31	4,344	20.22	7.1	
32	6,430	5.44	1.3	
33	7,512	6.49	1.3	
34	10,380	75.00	10.9	Upper Marker
35	13,491	0.00	0.0	
36	16,602	0.00	0.0	
37	17,672	0.00	0.0	
38	21,026	0.00	0.0	
39	22,776	0.00	0.0	

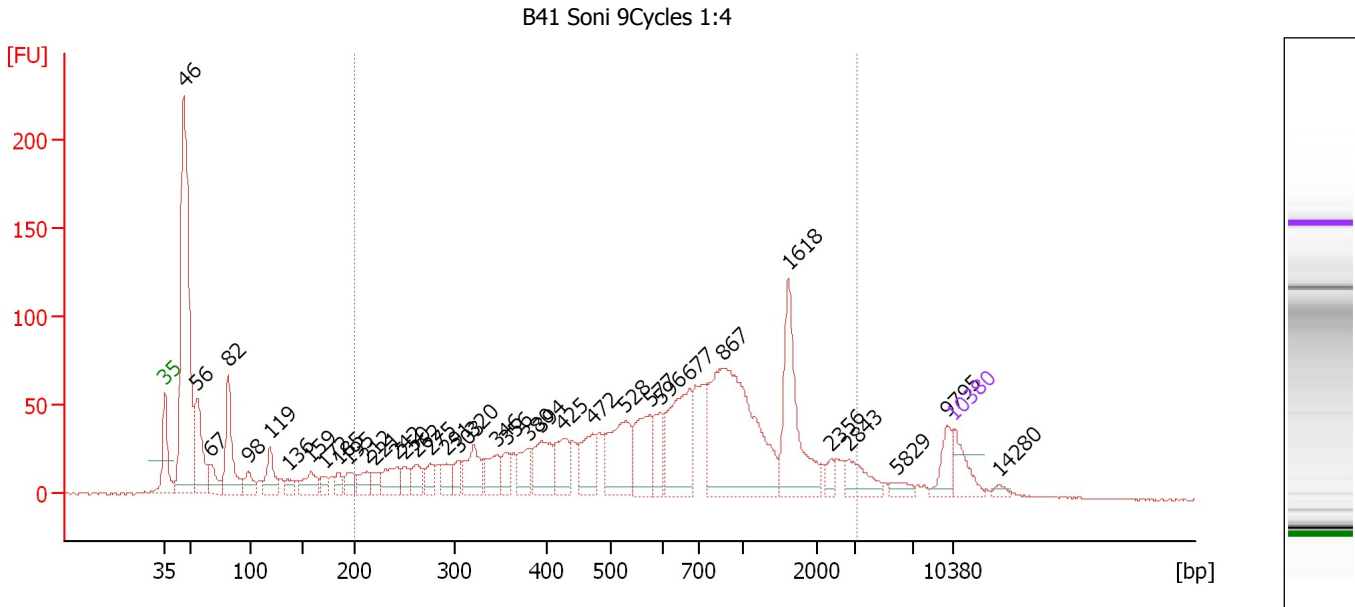
Region table for sample 8 : B39 Soni 9Cycles 1:4

From [bp]	To [bp]	Average Size [bp]	Molarity [pmol/l]	Conc. [pg/μl]	Corr. Area	% of Total	Size distribution in CV [%]	Color
237	2,314	860	3,710.4	1,356.10	1,804.5	59	58.8	

Assay Class: High Sensitivity DNA Assay
 Data Path: C:\...ents and Settings\Bioanalyzer\2012-07-10\2012-07-10_005.xad

Created: 7/10/2012 1:14:50 PM
 Modified: 7/10/2012 1:58:37 PM

Electropherogram Summary Continued ...



Overall Results for sample 9 : B41 Soni 9Cycles 1:4

Number of peaks found: 37 Corr. Area 1: 1,795.6
 Noise: 0.4

Peak table for sample 9 : B41 Soni 9Cycles 1:4

Peak	Size [bp]	Conc. [pg/μl]	Molarity [pmol/l]	Observations
1	35	125.00	5,411.3	Lower Marker
2	46	1,418.42	46,923.3	
3	56	311.63	8,498.6	
4	67	96.23	2,173.0	
5	82	304.77	5,664.5	
6	98	69.02	1,068.6	
7	119	120.89	1,543.2	
8	136	38.11	424.7	
9	159	93.13	888.6	
10	172	39.73	349.7	
11	185	41.38	339.0	
12	195	55.90	434.4	
13	212	64.86	463.5	
14	221	47.48	326.1	
15	242	105.01	656.7	
16	250	51.27	310.4	
17	262	64.94	376.0	
18	275	56.26	309.5	
19	291	59.04	307.0	
20	303	54.81	274.0	
21	320	134.66	637.5	
22	346	105.07	460.3	
23	356	61.23	260.7	
24	380	85.29	340.3	
25	394	165.00	634.1	
26	425	126.20	449.9	

Assay Class: High Sensitivity DNA Assay
 Data Path: C:\...ents and Settings\Bioanalyzer\2012-07-10\2012-07-10_005.xad

Created: 7/10/2012 1:14:50 PM
 Modified: 7/10/2012 1:58:37 PM

Electropherogram Summary Continued ...

... Peak table for sample 9 : B41 Soni 9Cycles 1:4

Peak	Size [bp]	Conc. [pg/µl]	Molarity [pmol/l]	Observations
27	472	141.74	455.1	
28	528	247.95	711.8	
29	577	181.12	475.3	
30	596	88.45	224.7	
31	677	317.30	710.2	
32	867	731.58	1,278.0	
33	1,618	300.14	281.1	
34	2,356	25.03	16.1	
35	2,843	76.56	40.8	
36	5,829	27.62	7.2	
37	9,795	64.68	10.0	
38	10,380	75.00	10.9	Upper Marker
39	14,280	0.00	0.0	

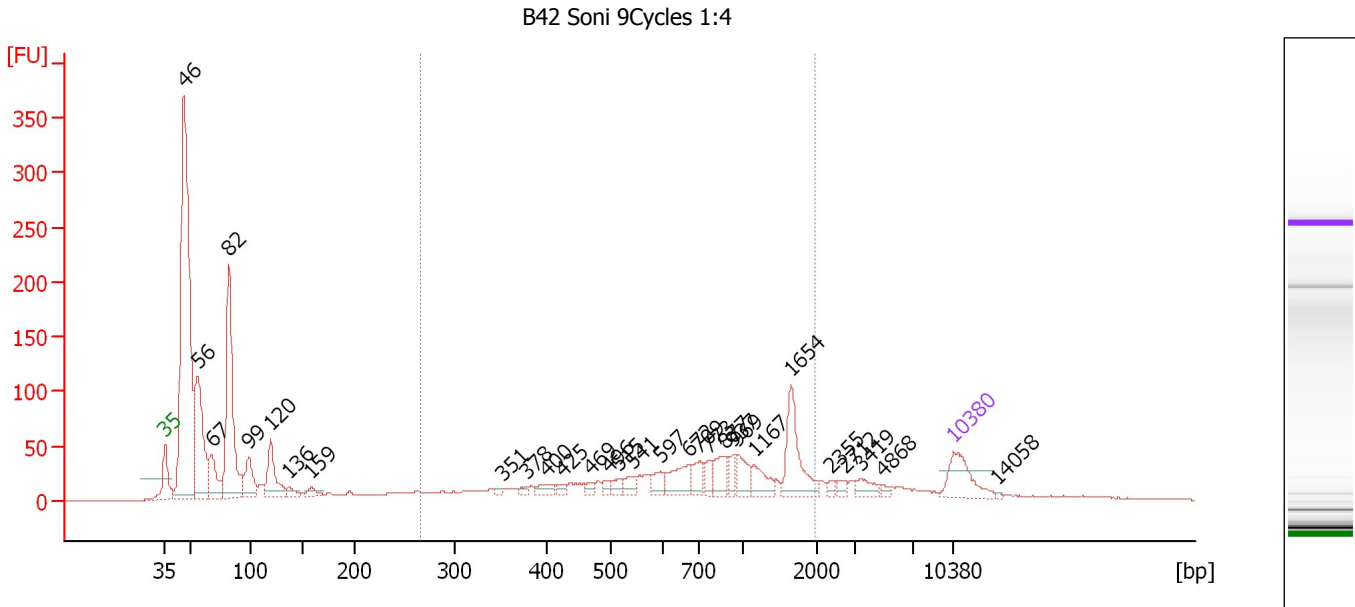
Region table for sample 9 : B41 Soni 9Cycles 1:4

From [bp]	To [bp]	Average Size [bp]	Molarity [pmol/l]	Conc. [pg/µl]	Corr. Area	% of Total	Size distribution in CV [%]	Color
200	3,134	827	11,646.8	3,810.74	1,795.6	65	69.5	■

Assay Class: High Sensitivity DNA Assay
 Data Path: C:\...ents and Settings\Bioanalyzer\2012-07-10\2012-07-10_005.xad

Created: 7/10/2012 1:14:50 PM
 Modified: 7/10/2012 1:58:37 PM

Electropherogram Summary Continued ...



Overall Results for sample 10 : B42 Soni 9Cycles 1:4

Number of peaks found: 30 Corr. Area 1: 860.9
 Noise: 0.4

Peak table for sample 10 : B42 Soni 9Cycles 1:4

Peak	Size [bp]	Conc. [pg/μl]	Molarity [pmol/l]	Observations
1	35	125.00	5,411.3	Lower Marker
2	46	1,288.24	42,422.7	
3	56	372.24	10,057.1	
4	67	122.10	2,746.8	
5	82	502.19	9,272.8	
6	99	104.37	1,601.9	
7	120	134.19	1,701.0	
8	136	22.77	253.7	
9	159	21.51	205.3	
10	351	5.73	24.7	
11	378	8.42	33.8	
12	400	24.08	91.1	
13	425	13.52	48.2	
14	469	15.20	49.1	
15	496	14.47	44.2	
16	515	20.77	61.0	
17	541	24.12	67.6	
18	597	32.29	82.0	
19	672	70.53	158.9	
20	709	39.41	84.2	
21	773	27.83	54.6	
22	877	49.29	85.2	
23	937	27.56	44.6	
24	969	44.01	68.8	
25	1,167	44.11	57.3	
26	1,654	121.35	111.2	

Assay Class: High Sensitivity DNA Assay
 Data Path: C:\...ents and Settings\Bioanalyzer\2012-07-10\2012-07-10_005.xad


Created: 7/10/2012 1:14:50 PM
 Modified: 7/10/2012 1:58:37 PM

Electropherogram Summary Continued ...

... Peak table for sample 10 : B42 Soni 9Cycles 1:4

Peak	Size [bp]	Conc. [pg/μl]	Molarity [pmol/l]	Observations
27	2,355	10.24	6.6	
28	2,712	10.99	6.1	
29	3,419	26.64	11.8	
30	4,868	7.62	2.4	
31	10,380	75.00	10.9	Upper Marker
32	14,058	0.00	0.0	

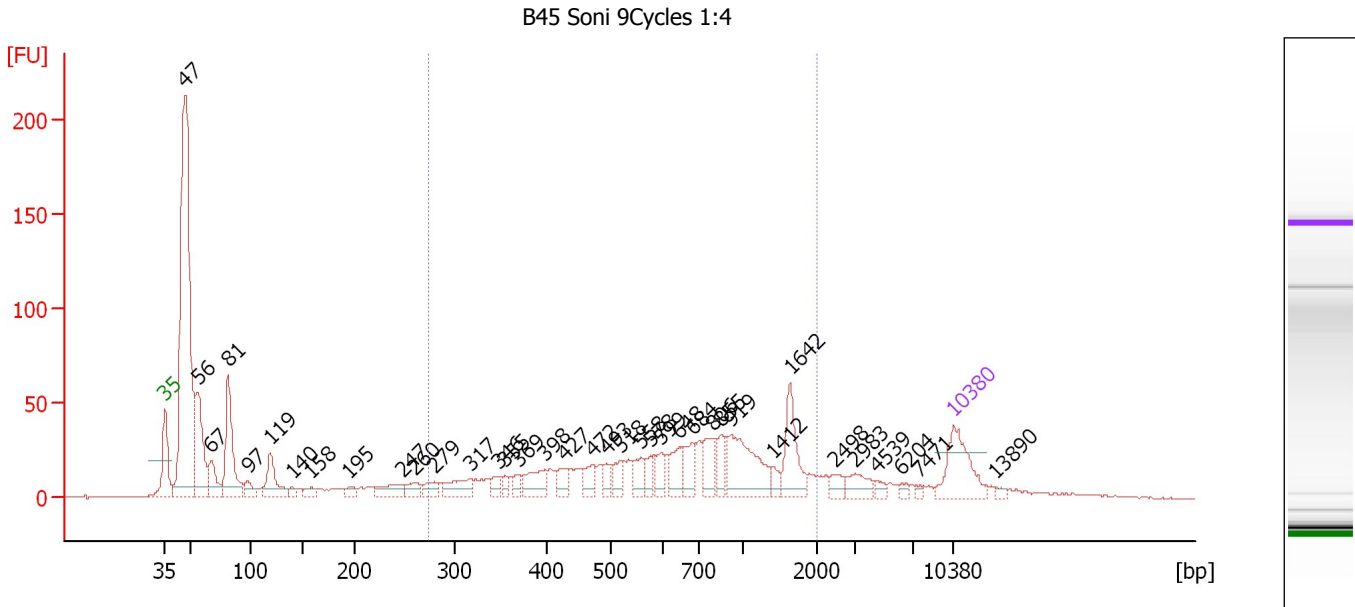
Region table for sample 10 : B42 Soni 9Cycles 1:4

From [bp]	To [bp]	Average Size [bp]	Molarity [pmol/l]	Conc. [pg/μl]	Corr. Area	% of Total	Size distribution in CV [%]	Color
266	1,967	864	2,489.0	967.40	860.9	33	54.7	

Assay Class: High Sensitivity DNA Assay
 Data Path: C:\...ents and Settings\Bioanalyzer\2012-07-10\2012-07-10_005.xad

Created: 7/10/2012 1:14:50 PM
 Modified: 7/10/2012 1:58:37 PM

Electropherogram Summary Continued ...



Overall Results for sample 11 : B45 Soni 9Cycles 1:4

Number of peaks found: 37 Corr. Area 1: 756.6
 Noise: 0.4

Peak table for sample 11 : B45 Soni 9Cycles 1:4

Peak	Size [bp]	Conc. [pg/μl]	Molarity [pmol/l]	Observations
1	35	125.00	5,411.3	Lower Marker
2	47	905.30	29,306.5	
3	56	186.90	5,072.0	
4	67	62.56	1,410.3	
5	81	185.34	3,464.6	
6	97	27.13	422.2	
7	119	81.73	1,038.0	
8	140	11.39	123.3	
9	158	18.22	174.4	
10	195	16.22	125.7	
11	247	41.51	254.6	
12	260	25.19	146.8	
13	279	25.34	137.4	
14	317	49.72	237.8	
15	346	18.81	82.2	
16	355	14.59	62.3	
17	369	17.22	70.7	
18	398	50.75	193.4	
19	427	24.73	87.7	
20	472	29.67	95.3	
21	493	22.54	69.3	
22	518	27.62	80.8	
23	558	33.41	90.7	
24	578	21.30	55.9	
25	599	30.29	76.7	
26	648	42.84	100.2	

Assay Class: High Sensitivity DNA Assay
 Data Path: C:\...ents and Settings\Bioanalyzer\2012-07-10\2012-07-10_005.xad


Created: 7/10/2012 1:14:50 PM
 Modified: 7/10/2012 1:58:37 PM

Electropherogram Summary Continued ...

... Peak table for sample 11 : B45 Soni 9Cycles 1:4

Peak	Size [bp]	Conc. [pg/μl]	Molarity [pmol/l]	Observations
27	684	43.43	96.2	
28	806	45.65	85.8	
29	855	31.00	55.0	
30	919	125.75	207.2	
31	1,412	13.83	14.8	
32	1,642	73.06	67.4	
33	2,498	15.10	9.2	
34	2,983	27.79	14.1	
35	4,539	8.96	3.0	
36	6,204	6.55	1.6	
37	7,471	4.15	0.8	
38	10,380	75.00	10.9	Upper Marker
39	13,890	0.00	0.0	

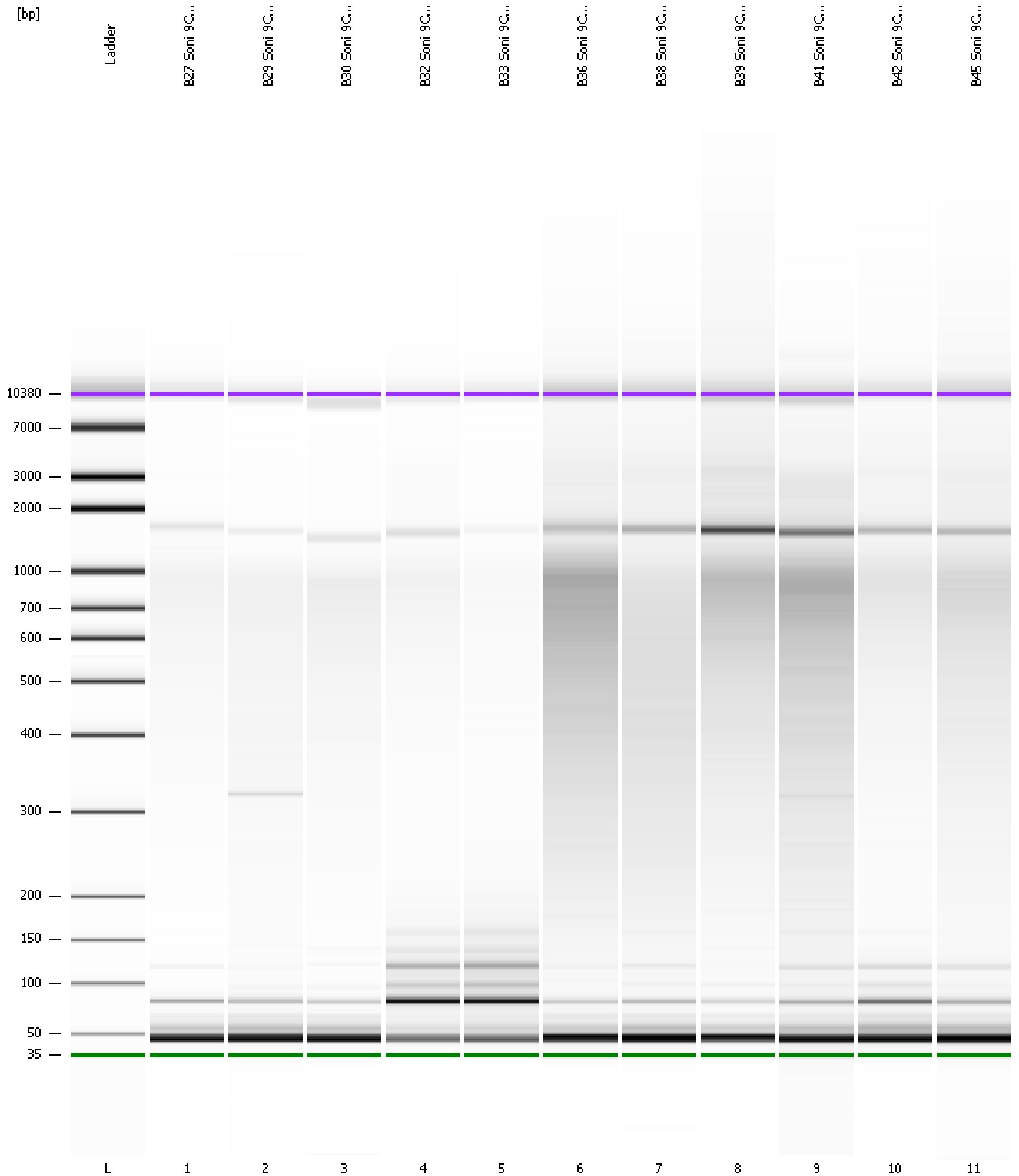
Region table for sample 11 : B45 Soni 9Cycles 1:4

From [bp]	To [bp]	Average Size [bp]	Molarity [pmol/l]	Conc. [pg/μl]	Corr. Area	% of Total	Size distribution in CV [%]	Color
274	2,000	785	2,653.0	970.00	756.6	43	55.5	

Assay Class: High Sensitivity DNA Assay
Data Path: C:\...ents and Settings\Bioanalyzer\2012-07-10\2012-07-10_005.xad

Created: 7/10/2012 1:14:50 PM
Modified: 7/10/2012 1:58:37 PM

Gel Image



Assay Class: High Sensitivity DNA Assay
 Data Path: C:\...ents and Settings\Bioanalyzer\2012-07-10\2012-07-10_005.xad

Created: 7/10/2012 1:14:50 PM
 Modified: 7/10/2012 1:58:37 PM

Run Logbook

Description	Number	Source	Category	Sub Category	Time	Time Zone	User	Host
Run ended on port 1 (Number of wells acquired: 12)		Instrument	Run		7/10/2012 1:56:11 PM	(GMT --07:00) Pacific Standard Time	UC Davis	D8XSMGH1
Run started on port 1 (File: C:\Documents and Settings\Bioanalyzer\2012-07-10\2012-07-10_005.xad)		Instrument	Run		7/10/2012 1:14:57 PM	(GMT --07:00) Pacific Standard Time	UC Davis	D8XSMGH1
Product Number : G2938B		Instrument	Run		7/10/2012 1:14:57 PM	(GMT --07:00) Pacific Standard Time	UC Davis	D8XSMGH1
Name :		Instrument	Run		7/10/2012 1:14:57 PM	(GMT --07:00) Pacific Standard Time	UC Davis	D8XSMGH1
Vendor : Agilent Technologies		Instrument	Run		7/10/2012 1:14:57 PM	(GMT --07:00) Pacific Standard Time	UC Davis	D8XSMGH1
Serial# : DE13701086		Instrument	Run		7/10/2012 1:14:57 PM	(GMT --07:00) Pacific Standard Time	UC Davis	D8XSMGH1
Firmware : C.01.069		Instrument	Run		7/10/2012 1:14:57 PM	(GMT --07:00) Pacific Standard Time	UC Davis	D8XSMGH1
Cartridge : Electrode		Instrument	Run		7/10/2012 1:14:57 PM	(GMT --07:00) Pacific Standard Time	UC Davis	D8XSMGH1