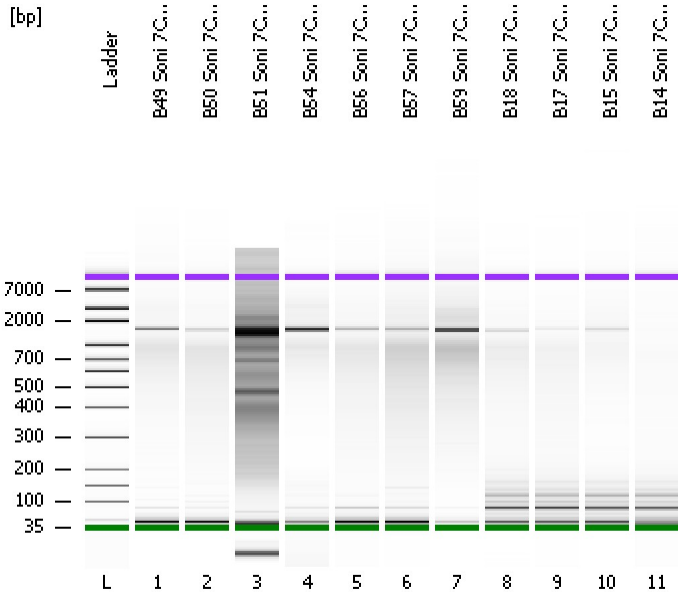


Assay Class: High Sensitivity DNA Assay  
Data Path: C:\...ents and Settings\Bioanalyzer\2012-07-10\2012-07-10\_006.xad

Created: 7/10/2012 2:15:28 PM  
Modified: 7/10/2012 2:59:15 PM

**Electrophoresis File Run Summary**



Instrument Information:  
 Instrument Name: DE13701086      Firmware: C.01.069  
 Serial#: DE13701086      Type: G2938B

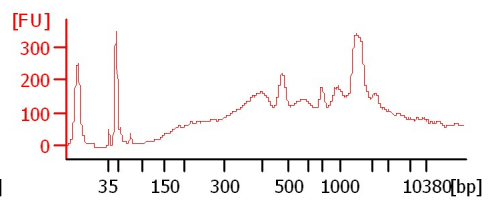
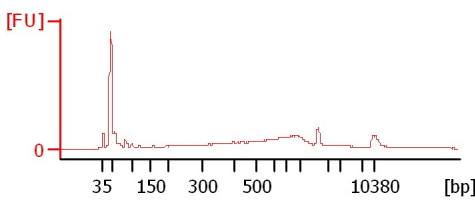
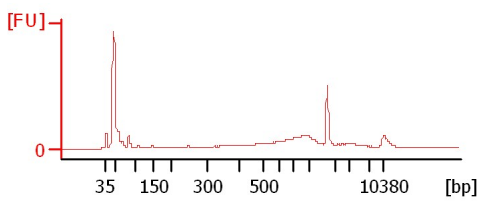
Assay Information:  
 Assay Origin Path: C:\Program Files\Agilent\2100 bioanalyzer\2100 expert\assays\dsDNA\High Sensitivity DNA.xsy  
 Assay Class: High Sensitivity DNA Assay  
 Version: 1.03  
 Assay Comments: Copyright © 2003-2010 Agilent Technologies

Chip Information:  
 Chip Lot #:   
 Reagent Kit Lot #:   
 Chip Comments:

**B49 Soni 7Cycles 1:3**

**B50 Soni 7Cycles 1:3**

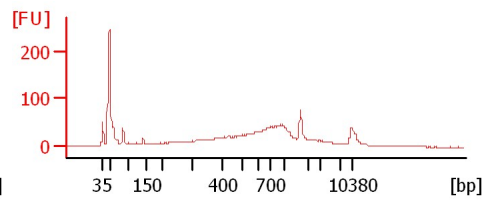
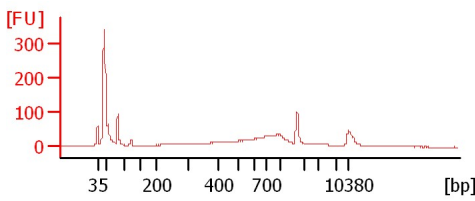
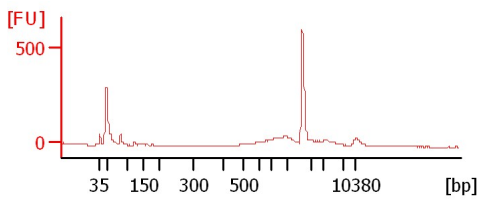
**B51 Soni 7Cycles 1:3**



**B54 Soni 7Cycles 1:3**

**B56 Soni 7Cycles 1:3**

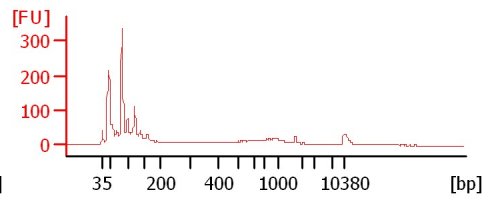
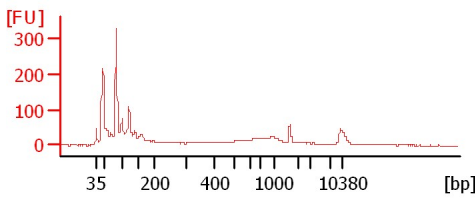
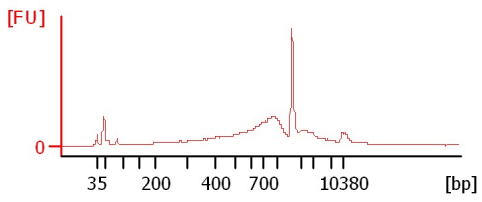
**B57 Soni 7Cycles 1:4**



**B59 Soni 7Cycles 1:4**

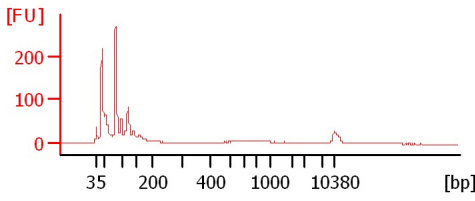
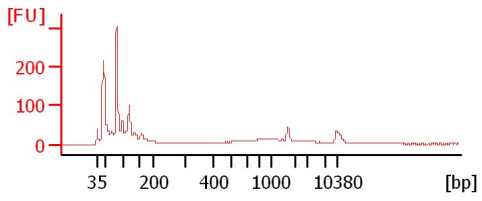
**B18 Soni 7Cycles 1:4**

**B17 Soni 7Cycles 1:4**



**B15 Soni 7Cycles 1:4**

**B14 Soni 7Cycles 1:4**



Assay Class: High Sensitivity DNA Assay  
Data Path: C:\...ents and Settings\Bioanalyzer\2012-07-10\2012-07-10\_006.xad

Created: 7/10/2012 2:15:28 PM  
Modified: 7/10/2012 2:59:15 PM

**Electrophoresis File Run Summary (Chip Summary)**

Sample Name	Sample Comment	Rest. Digest	Status	Observation	Result Label	Result Color
B49 Soni 7Cycles 1:3		<input type="checkbox"/>	✓			
B50 Soni 7Cycles 1:3		<input type="checkbox"/>	✓			
B51 Soni 7Cycles 1:3		<input type="checkbox"/>	✓			
B54 Soni 7Cycles 1:3		<input type="checkbox"/>	✓			
B56 Soni 7Cycles 1:3		<input type="checkbox"/>	✓			
B57 Soni 7Cycles 1:4		<input type="checkbox"/>	✓			
B59 Soni 7Cycles 1:4		<input type="checkbox"/>	✓			
B18 Soni 7Cycles 1:4		<input type="checkbox"/>	✓			
B17 Soni 7Cycles 1:4		<input type="checkbox"/>	✓			
B15 Soni 7Cycles 1:4		<input type="checkbox"/>	✓			
B14 Soni 7Cycles 1:4		<input type="checkbox"/>	✓			
Ladder		<input type="checkbox"/>	✓			

**Chip Lot #**

**Reagent Kit Lot #**

**Chip Comments :**

Assay Class: High Sensitivity DNA Assay  
Data Path: C:\...ents and Settings\Bioanalyzer\2012-07-10\2012-07-10\_006.xad

Created: 7/10/2012 2:15:28 PM  
Modified: 7/10/2012 2:59:15 PM

**Electrophoresis Assay Details**

**General Analysis Settings**

Number of Available Sample and Ladder Wells (Max.) : 12  
Minimum Visible Range [s] : 32  
Maximum Visible Range [s] : 138  
Start Analysis Time Range [s] : 33  
End Analysis Time Range [s] : 137.5  
Ladder Concentration [pg/ $\mu$ l] : 1950  
Uses Standard Area for Ladder Fragments  
Lower Marker Concentration [pg/ $\mu$ l] : 125  
Upper Marker Concentration [pg/ $\mu$ l] : 75  
Used Upper Marker for Quantitation  
Standard Curve Fit is Point to Point  
Show Data Aligned to Lower and Upper Marker

**Integrator Settings**

Integration Start Time [s] : 33.05  
Integration End Time [s] : 137  
Slope Threshold : 0.8  
Height Threshold [FU] : 5  
Area Threshold : 0.1  
Width Threshold [s] : 0.6  
Baseline Plateau [s] : 0.5

**Filter Settings**

Filter Width [s] : 0.5  
Polynomial Order : 4

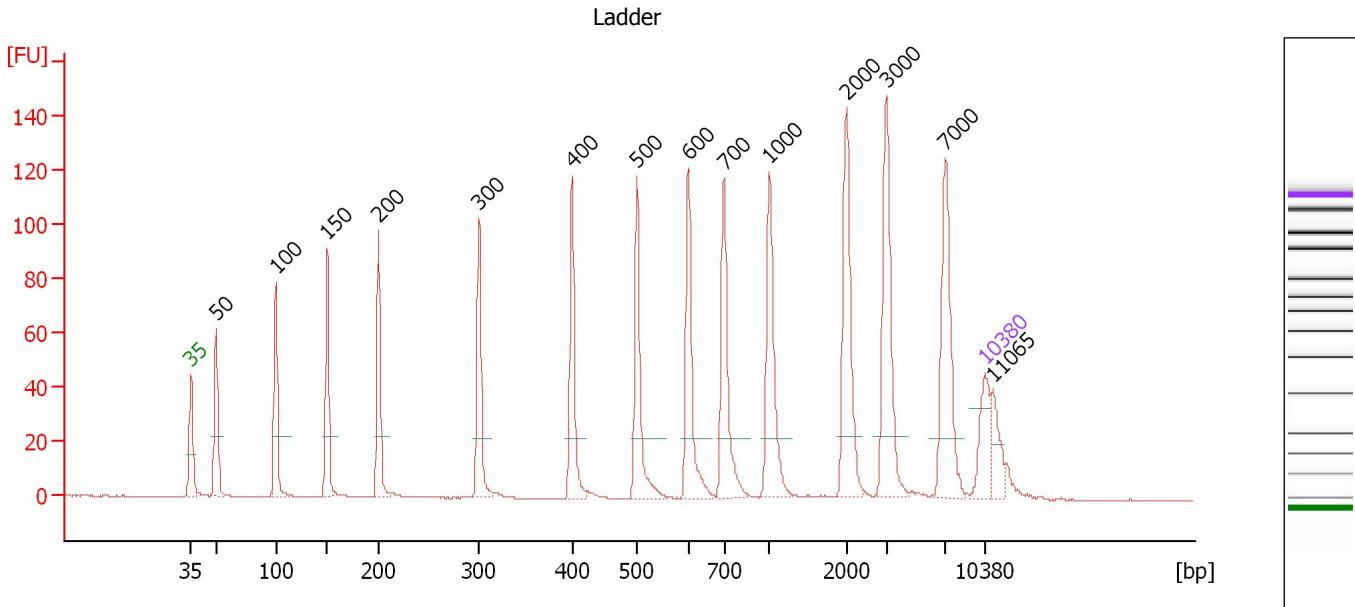
**Ladder**

Ladder Peak	Size	Area
1	35	160
2	50	210
3	100	208
4	150	221
5	200	242
6	300	270
7	400	305
8	500	306
9	600	336
10	700	321
11	1000	366
12	2000	413
13	3000	411
14	7000	400
15	10380	214

Assay Class: High Sensitivity DNA Assay  
 Data Path: C:\...ents and Settings\Bioanalyzer\2012-07-10\2012-07-10\_006.xad

Created: 7/10/2012 2:15:28 PM  
 Modified: 7/10/2012 2:59:15 PM

**Electropherogram Summary**



**Overall Results for Ladder**

Noise: 0.1

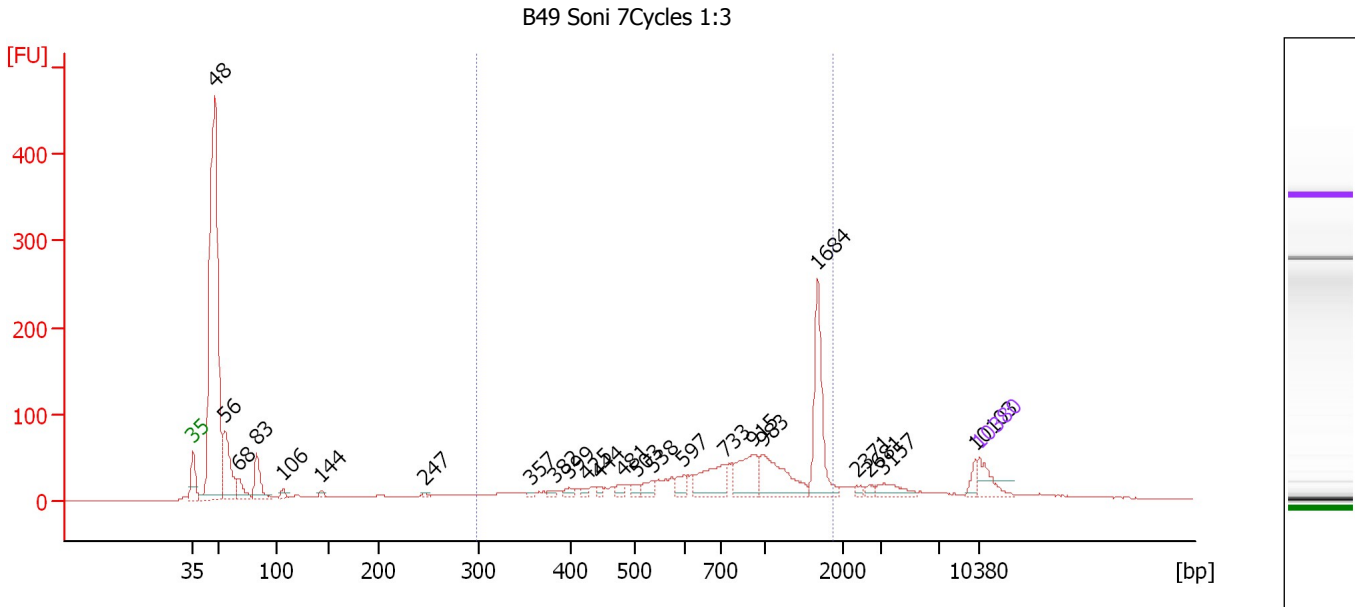
**Peak table for Ladder**

Peak	Size [bp]	Conc. [pg/μl]	Molarity [pmol/l]	Observations
1	35	125.00	5,411.3	Lower Marker
2	50	150.00	4,545.5	Ladder Peak
3	100	150.00	2,272.7	Ladder Peak
4	150	150.00	1,515.2	Ladder Peak
5	200	150.00	1,136.4	Ladder Peak
6	300	150.00	757.6	Ladder Peak
7	400	150.00	568.2	Ladder Peak
8	500	150.00	454.5	Ladder Peak
9	600	150.00	378.8	Ladder Peak
10	700	150.00	324.7	Ladder Peak
11	1,000	150.00	227.3	Ladder Peak
12	2,000	150.00	113.6	Ladder Peak
13	3,000	150.00	75.8	Ladder Peak
14	7,000	150.00	32.5	Ladder Peak
15	10,380	75.00	10.9	Upper Marker
16	11,065	0.00	0.0	

Assay Class: High Sensitivity DNA Assay  
 Data Path: C:\...ents and Settings\Bioanalyzer\2012-07-10\2012-07-10\_006.xad

Created: 7/10/2012 2:15:28 PM  
 Modified: 7/10/2012 2:59:15 PM

**Electropherogram Summary Continued ...**



**Overall Results for sample 1 : B49 Soni 7Cycles 1:3**

Number of peaks found: 24                      Corr. Area 1: 999.5  
 Noise: 0.2

**Peak table for sample 1 : B49 Soni 7Cycles 1:3**

Peak	Size [bp]	Conc. [pg/μl]	Molarity [pmol/l]	Observations
1	35	125.00	5,411.3	Lower Marker
2	48	2,359.29	74,149.1	
3	56	349.90	9,448.0	
4	68	94.01	2,082.6	
5	83	167.20	3,037.8	
6	106	24.01	341.6	
7	144	17.19	180.9	
8	247	7.91	48.6	
9	357	10.46	44.4	
10	382	13.57	53.8	
11	399	23.83	90.4	
12	425	13.87	49.4	
13	444	16.38	55.9	
14	481	27.11	85.4	
15	503	28.13	84.7	
16	538	43.85	123.6	
17	597	50.09	127.2	
18	733	183.35	378.7	
19	915	166.59	275.8	
20	983	216.50	333.7	
21	1,684	286.63	257.9	
22	2,371	13.87	8.9	
23	2,681	16.59	9.4	
24	3,157	52.30	25.1	
25	10,103	27.63	4.1	
26	10,380	75.00	10.9	Upper Marker

Assay Class: High Sensitivity DNA Assay  
Data Path: C:\...ents and Settings\Bioanalyzer\2012-07-10\2012-07-10\_006.xad

Created: 7/10/2012 2:15:28 PM  
Modified: 7/10/2012 2:59:15 PM

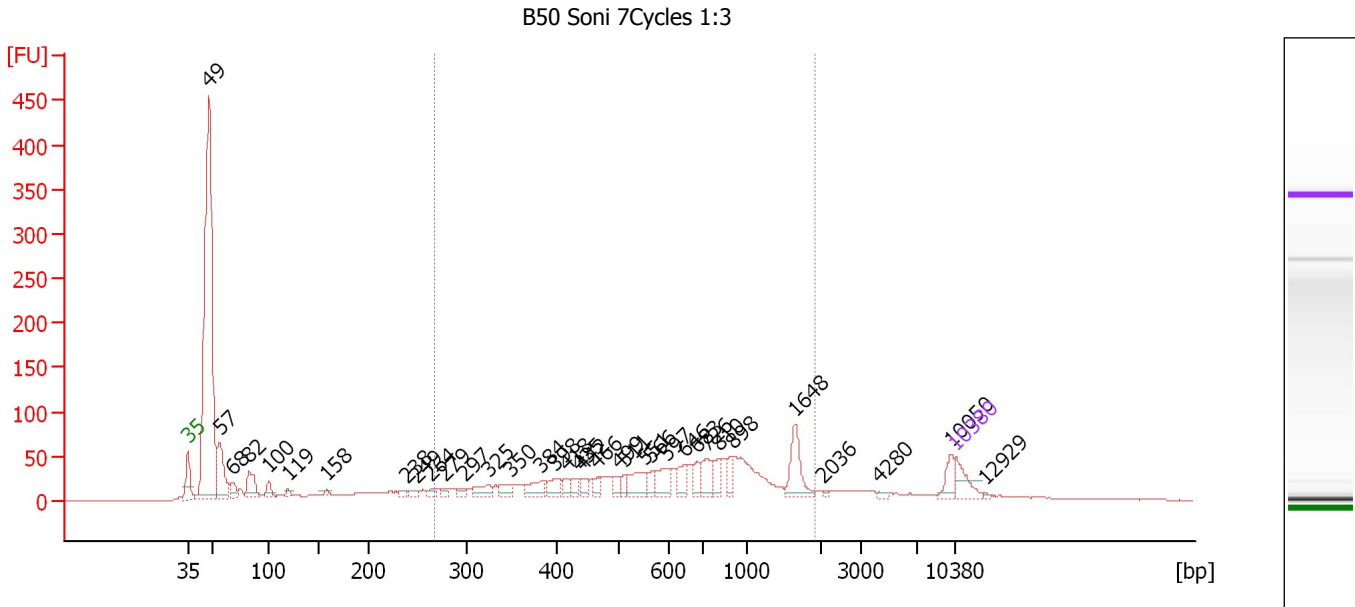
**Electropherogram Summary Continued ...****... Region table for sample 1 : B49 Soni 7Cycles 1:3**

<b>From [bp]</b>	<b>To [bp]</b>	<b>Average Size [bp]</b>	<b>Molarity [pmol/l]</b>	<b>Conc. [pg/μl]</b>	<b>Corr. Area</b>	<b>% of Total</b>	<b>Size distribution in CV [%]</b>	<b>Color</b>
299	1,889	962	3,537.7	1,575.32	999.5	39	50.2	■

Assay Class: High Sensitivity DNA Assay  
 Data Path: C:\...ents and Settings\Bioanalyzer\2012-07-10\2012-07-10\_006.xad

Created: 7/10/2012 2:15:28 PM  
 Modified: 7/10/2012 2:59:15 PM

**Electropherogram Summary Continued ...**



**Overall Results for sample 2 : B50 Soni 7Cycles 1:3**

Number of peaks found: 35                      Corr. Area 1: 1,157.4  
 Noise: 0.3

**Peak table for sample 2 : B50 Soni 7Cycles 1:3**

Peak	Size [bp]	Conc. [pg/μl]	Molarity [pmol/l]	Observations
1	35	125.00	5,411.3	Lower Marker
2	49	2,466.93	77,033.7	
3	57	302.14	8,065.7	
4	68	70.60	1,564.0	
5	82	150.88	2,775.8	
6	100	54.01	821.8	
7	119	19.75	251.0	
8	158	18.20	174.9	
9	238	15.87	101.1	
10	249	24.44	148.5	
11	264	25.68	147.3	
12	279	20.74	112.7	
13	297	27.93	142.2	
14	325	67.62	315.6	
15	350	54.26	234.8	
16	384	80.01	315.7	
17	398	65.53	249.3	
18	418	43.19	156.6	
19	435	42.06	146.6	
20	442	38.89	133.4	
21	466	34.28	111.4	
22	499	42.86	130.1	
23	511	38.24	113.4	
24	551	112.73	310.2	
25	566	41.53	111.3	
26	597	99.38	252.3	

Assay Class: High Sensitivity DNA Assay  
 Data Path: C:\...ents and Settings\Bioanalyzer\2012-07-10\2012-07-10\_006.xad


Created: 7/10/2012 2:15:28 PM  
 Modified: 7/10/2012 2:59:15 PM

**Electropherogram Summary Continued ...**

**... Peak table for sample 2 : B50 Soni 7Cycles 1:3**

Peak	Size [bp]	Conc. [pg/µl]	Molarity [pmol/l]	Observations
27	646	81.46	190.9	
28	683	54.35	120.5	
29	726	108.87	227.1	
30	810	64.10	119.9	
31	898	56.02	94.5	
32	1,648	148.24	136.3	
33	2,036	7.37	5.5	
34	4,280	9.26	3.3	
35	10,050	59.87	9.0	
36	10,380	75.00	10.9	Upper Marker
37	12,929	0.00	0.0	

**Region table for sample 2 : B50 Soni 7Cycles 1:3**

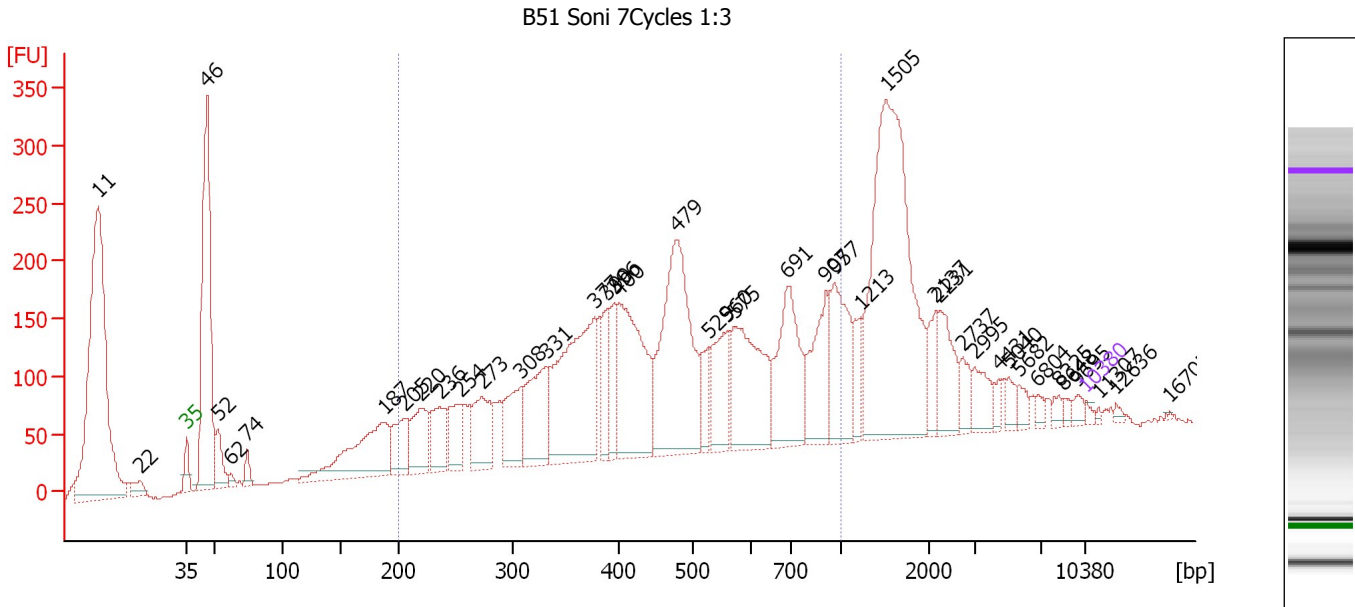
From [bp]	To [bp]	Average Size [bp]	Molarity [pmol/l]	Conc. [pg/µl]	Corr. Area	% of Total	Size distribution in CV [%]	Color
267	1,897	736	6,565.7	2,284.58	1,157.4	44	54.7	



Assay Class: High Sensitivity DNA Assay  
 Data Path: C:\...ents and Settings\Bioanalyzer\2012-07-10\2012-07-10\_006.xad

Created: 7/10/2012 2:15:28 PM  
 Modified: 7/10/2012 2:59:15 PM

**Electropherogram Summary Continued ...**



**Overall Results for sample 3 : B51 Soni 7Cycles 1:3**

Number of peaks found: 41                      Corr. Area 1: 4,161.1  
 Noise: 0.7

**Peak table for sample 3 : B51 Soni 7Cycles 1:3**

Peak	Size [bp]	Conc. [pg/μl]	Molarity [pmol/l]	Observations
1	11	0.00	0.0	
2	22	0.00	0.0	
3	35	125.00	5,411.3	Lower Marker
4	46	8,860.35	291,978.6	
5	52	1,055.65	30,599.9	
6	62	178.32	4,343.5	
7	74	410.47	8,390.5	
8	187	3,813.21	30,869.2	
9	205	1,378.48	10,180.3	
10	220	1,657.48	11,434.5	
11	236	1,467.71	9,424.4	
12	254	1,272.82	7,587.7	
13	273	1,736.02	9,640.9	
14	308	1,636.21	8,049.0	
15	331	2,415.13	11,044.6	
16	377	5,235.01	21,014.3	
17	390	990.46	3,846.7	
18	396	1,090.11	4,168.7	
19	400	4,081.46	15,469.6	
20	479	5,836.44	18,454.8	
21	529	755.58	2,165.5	
22	560	1,643.29	4,446.9	
23	575	3,135.92	8,269.0	
24	691	2,809.99	6,158.7	
25	907	1,677.44	2,803.1	
26	957	2,063.39	3,268.5	

Assay Class: High Sensitivity DNA Assay  
 Data Path: C:\...ents and Settings\Bioanalyzer\2012-07-10\2012-07-10\_006.xad

Created: 7/10/2012 2:15:28 PM  
 Modified: 7/10/2012 2:59:15 PM

**Electropherogram Summary Continued ...**

**... Peak table for sample 3 : B51 Soni 7Cycles 1:3**

Peak	Size [bp]	Conc. [pg/µl]	Molarity [pmol/l]	Observations
27	1,213	622.47	777.5	
28	1,505	7,793.61	7,845.8	
29	2,137	631.30	447.6	
30	2,231	1,049.73	712.9	
31	2,737	425.36	235.5	
32	2,995	586.26	296.5	
33	4,431	172.23	58.9	
34	5,040	253.51	76.2	
35	5,682	220.86	58.9	
36	6,804	129.26	28.8	
37	8,325	135.17	24.6	
38	8,648	113.35	19.9	
39	9,695	150.57	23.5	
40	10,380	75.00	10.9	Upper Marker
41	11,307	0.00	0.0	
42	12,636	0.00	0.0	
43	16,705	0.00	0.0	

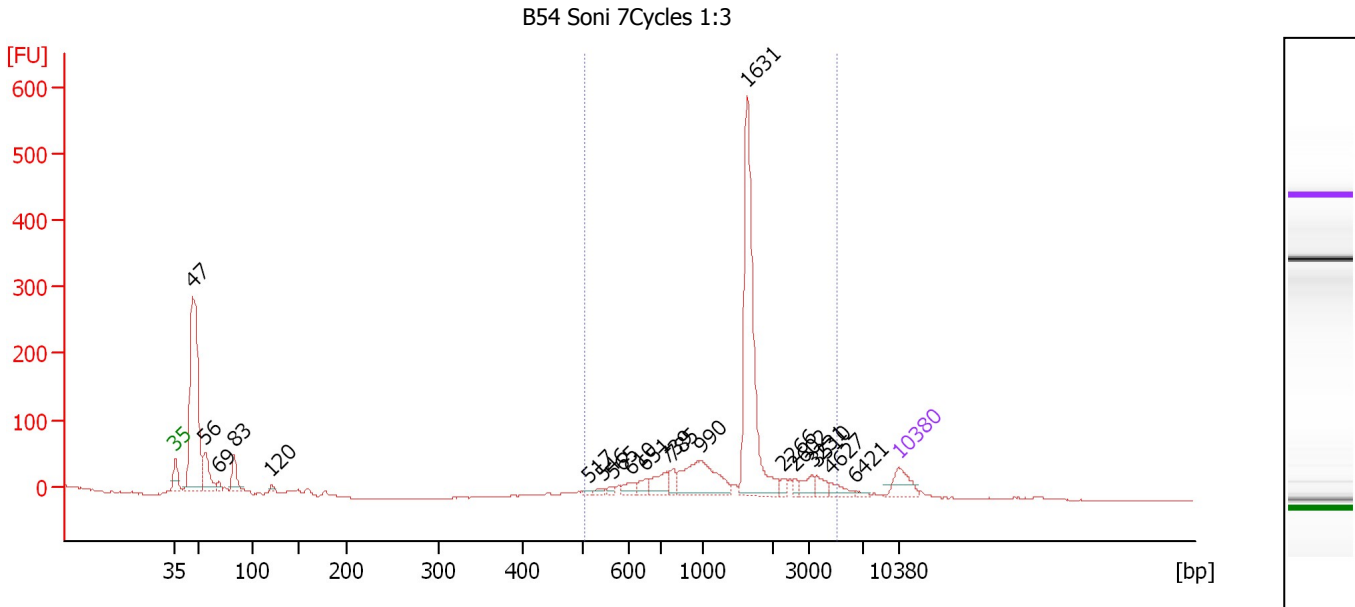
**Region table for sample 3 : B51 Soni 7Cycles 1:3**

From [bp]	To [bp]	Average Size [bp]	Molarity [pmol/l]	Conc. [pg/µl]	Corr. Area	% of Total	Size distribution in CV [%]	Color
200	1,000	491	147,262.3	38,461.18	4,161.1	51	39.2	<span style="color: blue;">■</span>

Assay Class: High Sensitivity DNA Assay  
 Data Path: C:\...ents and Settings\Bioanalyzer\2012-07-10\2012-07-10\_006.xad

Created: 7/10/2012 2:15:28 PM  
 Modified: 7/10/2012 2:59:15 PM

**Electropherogram Summary Continued ...**



**Overall Results for sample 4 : B54 Soni 7Cycles 1:3**

Number of peaks found: 20                      Corr. Area 1: 1,154.8  
 Noise: 0.5

**Peak table for sample 4 : B54 Soni 7Cycles 1:3**

Peak	Size [bp]	Conc. [pg/μl]	Molarity [pmol/l]	Observations
1	35	125.00	5,411.3	Lower Marker
2	47	1,243.32	40,469.8	
3	56	189.37	5,079.4	
4	69	30.65	669.9	
5	83	117.56	2,141.8	
6	120	17.30	217.9	
7	517	9.36	27.5	
8	546	15.17	42.1	
9	565	14.31	38.4	
10	610	36.58	90.9	
11	651	37.60	87.5	
12	739	81.52	167.3	
13	785	37.73	72.8	
14	990	250.27	383.0	
15	1,631	688.32	639.5	
16	2,266	18.43	12.3	
17	2,602	16.75	9.8	
18	3,231	40.55	19.0	
19	3,510	33.45	14.4	
20	4,627	33.17	10.9	
21	6,421	10.57	2.5	
22	10,380	75.00	10.9	Upper Marker

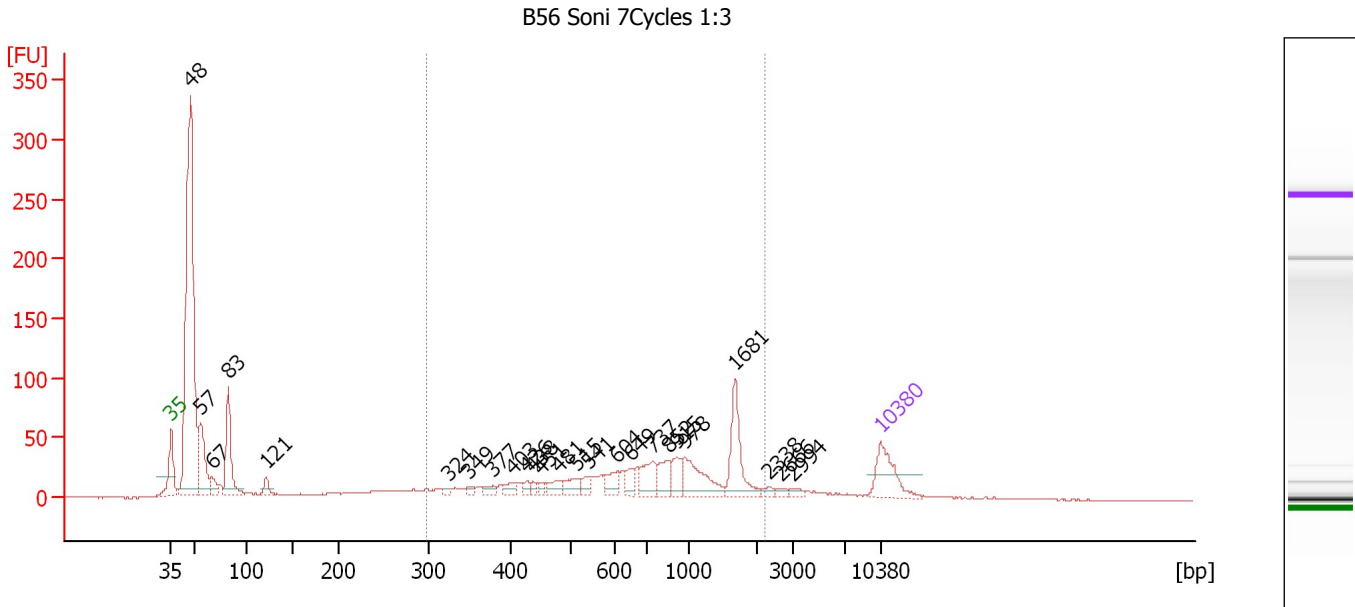
**Region table for sample 4 : B54 Soni 7Cycles 1:3**

From [bp]	To [bp]	Average Size [bp]	Molarity [pmol/l]	Conc. [pg/μl]	Corr. Area	% of Total	Size distribution in CV [%]	Color
507	5,036	1,611	1,587.0	1,312.96	1,154.8	59	47.4	Blue

Assay Class: High Sensitivity DNA Assay  
 Data Path: C:\...ents and Settings\Bioanalyzer\2012-07-10\2012-07-10\_006.xad

Created: 7/10/2012 2:15:28 PM  
 Modified: 7/10/2012 2:59:15 PM

**Electropherogram Summary Continued ...**



**Overall Results for sample 5 : B56 Soni 7Cycles 1:3**

Number of peaks found: 25                      Corr. Area 1: 707.1  
 Noise: 0.5

**Peak table for sample 5 : B56 Soni 7Cycles 1:3**

Peak	Size [bp]	Conc. [pg/μl]	Molarity [pmol/l]	Observations
1	35	125.00	5,411.3	Lower Marker
2	48	1,179.88	37,088.1	
3	57	178.19	4,734.1	
4	67	32.88	742.5	
5	83	186.76	3,421.1	
6	121	25.28	316.2	
7	324	8.90	41.7	
8	349	9.49	41.2	
9	377	16.77	67.4	
10	403	18.88	71.0	
11	426	11.51	40.9	
12	438	11.39	39.4	
13	451	11.14	37.5	
14	481	24.89	78.4	
15	515	32.50	95.5	
16	541	23.74	66.5	
17	604	34.61	86.8	
18	649	24.59	57.4	
19	737	58.86	121.0	
20	852	46.81	83.3	
21	915	38.26	63.4	
22	978	90.15	139.7	
23	1,681	102.91	92.7	
24	2,338	9.02	5.8	
25	2,666	8.24	4.7	
26	2,994	9.17	4.6	

Assay Class: High Sensitivity DNA Assay  
Data Path: C:\...ents and Settings\Bioanalyzer\2012-07-10\2012-07-10\_006.xad

Created: 7/10/2012 2:15:28 PM  
Modified: 7/10/2012 2:59:15 PM

**Electropherogram Summary Continued ...****... Peak table for sample 5 : B56 Soni 7Cycles 1:3**

Peak	Size [bp]	Conc. [pg/μl]	Molarity [pmol/l]	Observations
27	10,380	75.00	10.9	Upper Marker

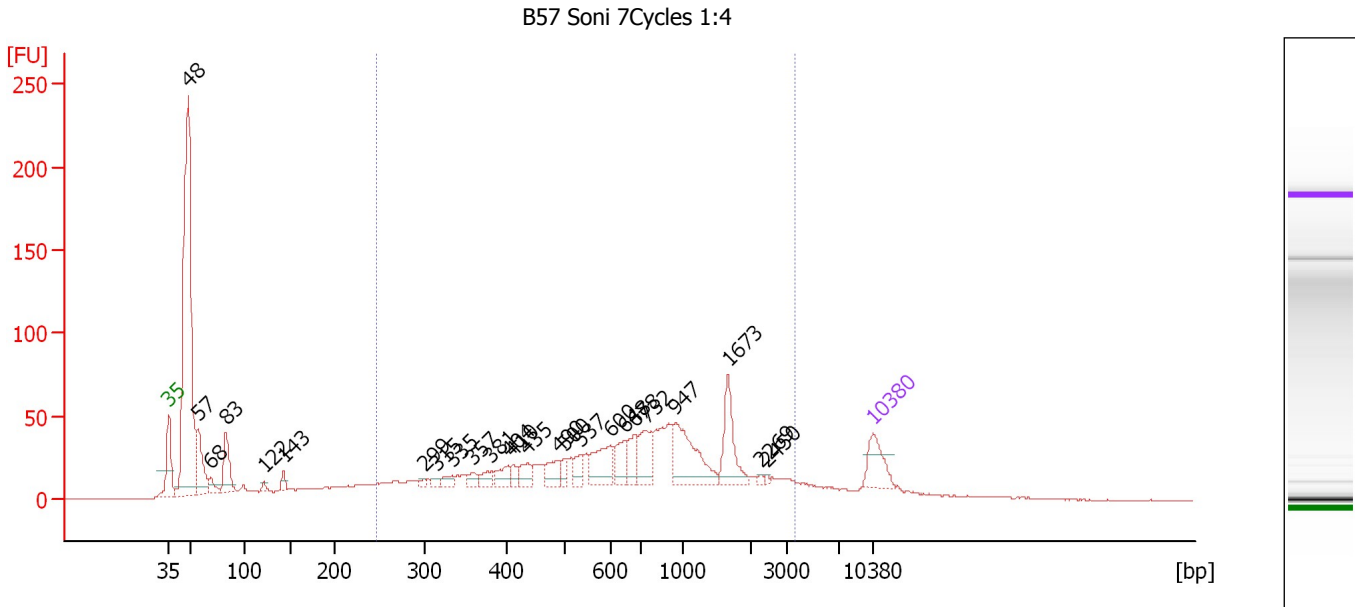
**Region table for sample 5 : B56 Soni 7Cycles 1:3**

From [bp]	To [bp]	Average Size [bp]	Molarity [pmol/l]	Conc. [pg/μl]	Corr. Area	% of Total	Size distribution in CV [%]	Color
298	2,220	885	1,990.5	812.19	707.1	39	54.5	■

Assay Class: High Sensitivity DNA Assay  
 Data Path: C:\...ents and Settings\Bioanalyzer\2012-07-10\2012-07-10\_006.xad

Created: 7/10/2012 2:15:28 PM  
 Modified: 7/10/2012 2:59:15 PM

**Electropherogram Summary Continued ...**



**Overall Results for sample 6 : B57 Soni 7Cycles 1:4**

Number of peaks found: 25                      Corr. Area 1: 1,110.9  
 Noise: 0.3

**Peak table for sample 6 : B57 Soni 7Cycles 1:4**

Peak	Size [bp]	Conc. [pg/μl]	Molarity [pmol/l]	Observations
1	35	125.00	5,411.3	Lower Marker
2	48	1,456.26	46,023.6	
3	57	209.04	5,582.6	
4	68	43.90	972.3	
5	83	148.33	2,703.9	
6	122	12.93	160.7	
7	143	25.04	264.6	
8	299	12.32	62.4	
9	315	17.64	84.9	
10	335	29.23	132.3	
11	357	28.04	118.9	
12	381	36.81	146.5	
13	404	48.37	181.5	
14	410	25.54	94.3	
15	435	50.27	175.0	
16	490	55.84	172.8	
17	500	28.92	87.7	
18	537	42.29	119.2	
19	600	115.22	291.2	
20	648	68.92	161.1	
21	678	68.23	152.4	
22	732	108.36	224.2	
23	947	189.42	303.1	
24	1,673	120.51	109.1	
25	2,269	5.70	3.8	
26	2,450	4.85	3.0	

Assay Class: High Sensitivity DNA Assay  
Data Path: C:\...ents and Settings\Bioanalyzer\2012-07-10\2012-07-10\_006.xad

Created: 7/10/2012 2:15:28 PM  
Modified: 7/10/2012 2:59:15 PM

**Electropherogram Summary Continued ...****... Peak table for sample 6 : B57 Soni 7Cycles 1:4**

Peak	Size [bp]	Conc. [pg/ $\mu$ l]	Molarity [pmol/l]	Observations
27	10,380	75.00	10.9	Upper Marker

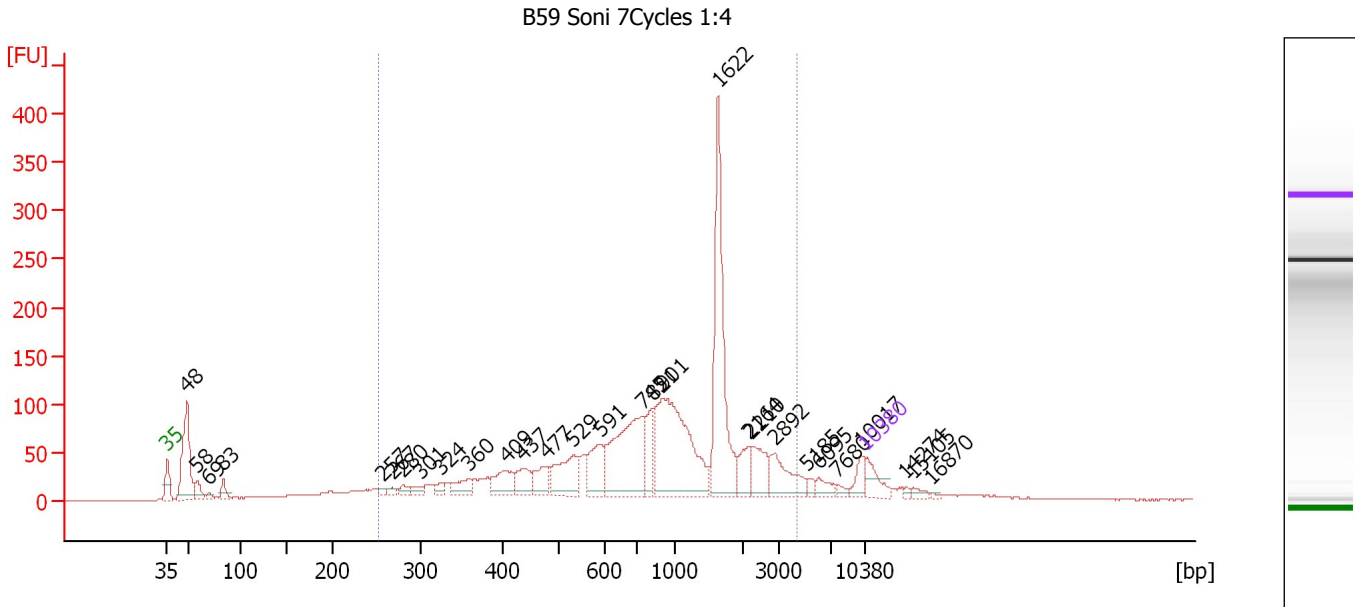
**Region table for sample 6 : B57 Soni 7Cycles 1:4**

From [bp]	To [bp]	Average Size [bp]	Molarity [pmol/l]	Conc. [pg/ $\mu$ l]	Corr. Area	% of Total	Size distribution in CV [%]	Color
246	3,608	881	6,225.2	2,240.98	1,110.9	56	69.9	

Assay Class: High Sensitivity DNA Assay  
 Data Path: C:\...ents and Settings\Bioanalyzer\2012-07-10\2012-07-10\_006.xad

Created: 7/10/2012 2:15:28 PM  
 Modified: 7/10/2012 2:59:15 PM

**Electropherogram Summary Continued ...**



**Overall Results for sample 7 : B59 Soni 7Cycles 1:4**

Number of peaks found: 29                      Corr. Area 1: 2,301.3  
 Noise: 0.3

**Peak table for sample 7 : B59 Soni 7Cycles 1:4**

Peak	Size [bp]	Conc. [pg/μl]	Molarity [pmol/l]	Observations
1	35	125.00	5,411.3	Lower Marker
2	48	497.00	15,550.9	
3	58	81.64	2,151.1	
4	69	19.42	427.9	
5	83	57.95	1,063.1	
6	257	17.94	105.7	
7	267	21.76	123.3	
8	280	32.48	176.1	
9	301	31.39	158.2	
10	324	33.16	155.0	
11	360	86.73	364.9	
12	409	134.31	497.3	
13	437	109.03	377.9	
14	477	105.77	335.8	
15	529	222.99	638.6	
16	591	175.36	449.8	
17	745	524.39	1,066.7	
18	821	144.25	266.2	
19	901	700.03	1,176.8	
20	1,622	601.54	561.8	
21	2,164	87.07	61.0	
22	2,210	118.97	81.6	
23	2,892	149.22	78.2	
24	5,185	23.81	7.0	
25	6,095	41.83	10.4	
26	7,680	16.28	3.2	



Assay Class: High Sensitivity DNA Assay  
 Data Path: C:\...ents and Settings\Bioanalyzer\2012-07-10\2012-07-10\_006.xad

Created: 7/10/2012 2:15:28 PM  
 Modified: 7/10/2012 2:59:15 PM

### Electropherogram Summary Continued ...

#### ... Peak table for sample 7 : B59 Soni 7Cycles 1:4

Peak	Size [bp]	Conc. [pg/μl]	Molarity [pmol/l]	Observations
27	10,017	50.50	7.6	
28	10,380	75.00	10.9	Upper Marker
29	14,274	0.00	0.0	
30	15,105	0.00	0.0	
31	16,870	0.00	0.0	

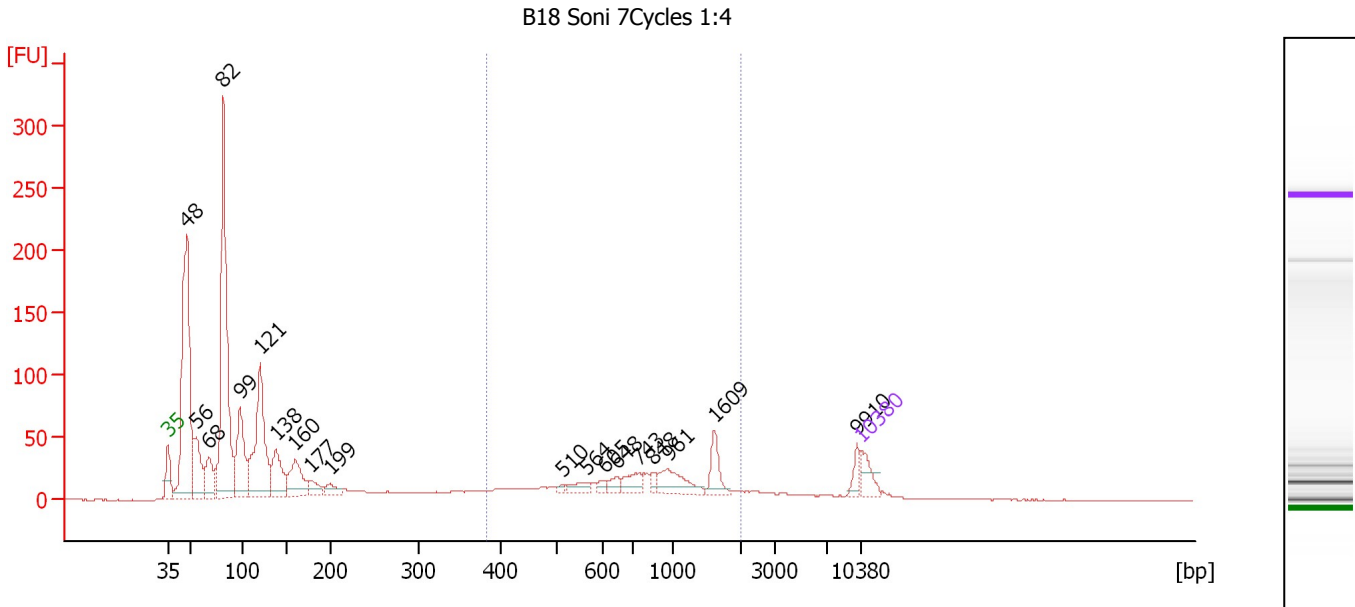
#### Region table for sample 7 : B59 Soni 7Cycles 1:4

From [bp]	To [bp]	Average Size [bp]	Molarity [pmol/l]	Conc. [pg/μl]	Corr. Area	% of Total	Size distribution in CV [%]	Color
252	4,322	1,129	8,850.6	3,882.01	2,301.3	79	66.3	

Assay Class: High Sensitivity DNA Assay  
 Data Path: C:\...ents and Settings\Bioanalyzer\2012-07-10\2012-07-10\_006.xad

Created: 7/10/2012 2:15:28 PM  
 Modified: 7/10/2012 2:59:15 PM

**Electropherogram Summary Continued ...**



**Overall Results for sample 8 : B18 Soni 7Cycles 1:4**

Number of peaks found: 19                      Corr. Area 1: 423.1  
 Noise: 0.3

**Peak table for sample 8 : B18 Soni 7Cycles 1:4**

Peak	Size [bp]	Conc. [pg/μl]	Molarity [pmol/l]	Observations
1	35	125.00	5,411.3	Lower Marker
2	48	1,698.08	53,852.7	
3	56	352.15	9,505.1	
4	68	233.43	5,163.3	
5	82	1,739.74	31,986.2	
6	99	497.73	7,625.6	
7	121	874.40	10,990.1	
8	138	285.80	3,146.0	
9	160	280.88	2,667.2	
10	177	89.21	764.3	
11	199	66.11	503.7	
12	510	15.09	44.9	
13	564	52.18	140.1	
14	605	28.46	71.2	
15	648	43.22	101.1	
16	743	84.67	172.8	
17	848	30.23	54.0	
18	961	151.51	239.0	
19	1,609	106.55	100.3	
20	9,910	49.18	7.5	
21	10,380	75.00	10.9	Upper Marker

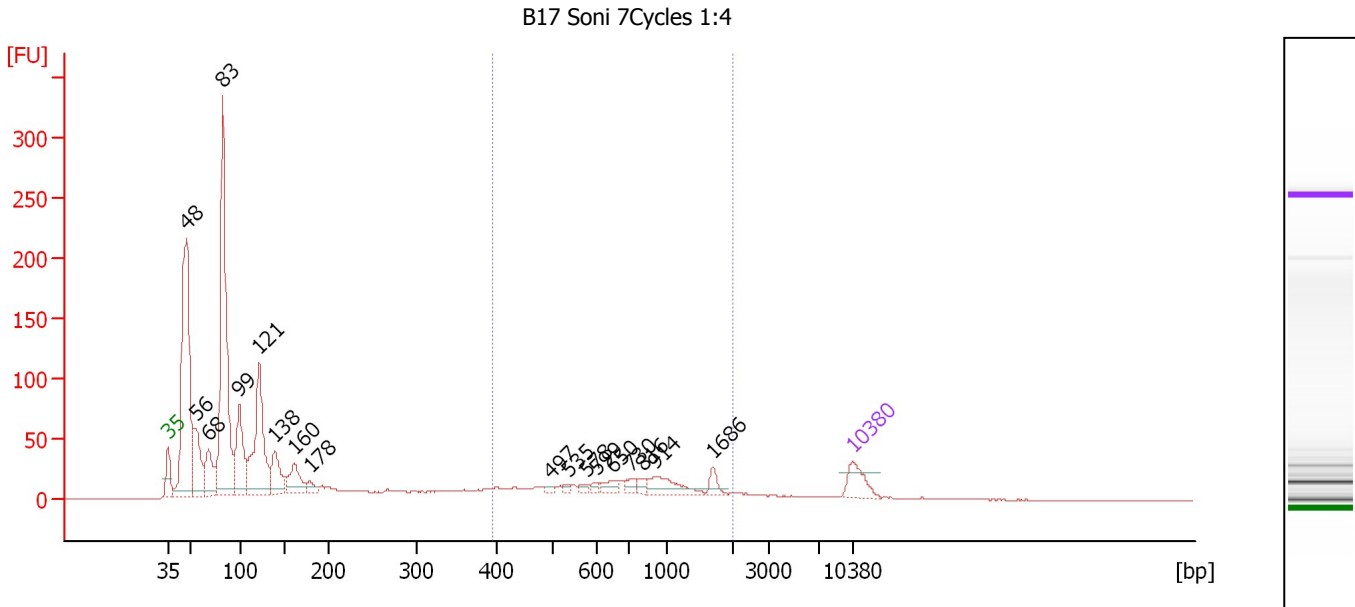
**Region table for sample 8 : B18 Soni 7Cycles 1:4**

From [bp]	To [bp]	Average Size [bp]	Molarity [pmol/l]	Conc. [pg/μl]	Corr. Area	% of Total	Size distribution in CV [%]	Color
382	2,031	896	2,324.2	1,055.66	423.1	19	48.4	Blue

Assay Class: High Sensitivity DNA Assay  
 Data Path: C:\...ents and Settings\Bioanalyzer\2012-07-10\2012-07-10\_006.xad

Created: 7/10/2012 2:15:28 PM  
 Modified: 7/10/2012 2:59:15 PM

**Electropherogram Summary Continued ...**



**Overall Results for sample 9 : B17 Soni 7Cycles 1:4**

Number of peaks found: 18                      Corr. Area 1: 332.8  
 Noise: 0.2

**Peak table for sample 9 : B17 Soni 7Cycles 1:4**

Peak	Size [bp]	Conc. [pg/μl]	Molarity [pmol/l]	Observations
1	35	125.00	5,411.3	Lower Marker
2	48	1,314.41	41,546.7	
3	56	296.57	8,031.0	
4	68	236.93	5,242.8	
5	83	1,371.03	25,162.9	
6	99	378.16	5,803.8	
7	121	625.47	7,856.4	
8	138	184.77	2,029.6	
9	160	158.90	1,503.5	
10	178	45.65	389.4	
11	497	11.55	35.2	
12	535	11.43	32.4	
13	578	16.51	43.2	
14	599	15.39	38.9	
15	650	37.68	87.8	
16	730	28.44	59.1	
17	816	22.61	42.0	
18	914	97.86	162.3	
19	1,686	34.67	31.2	
20	10,380	75.00	10.9	Upper Marker

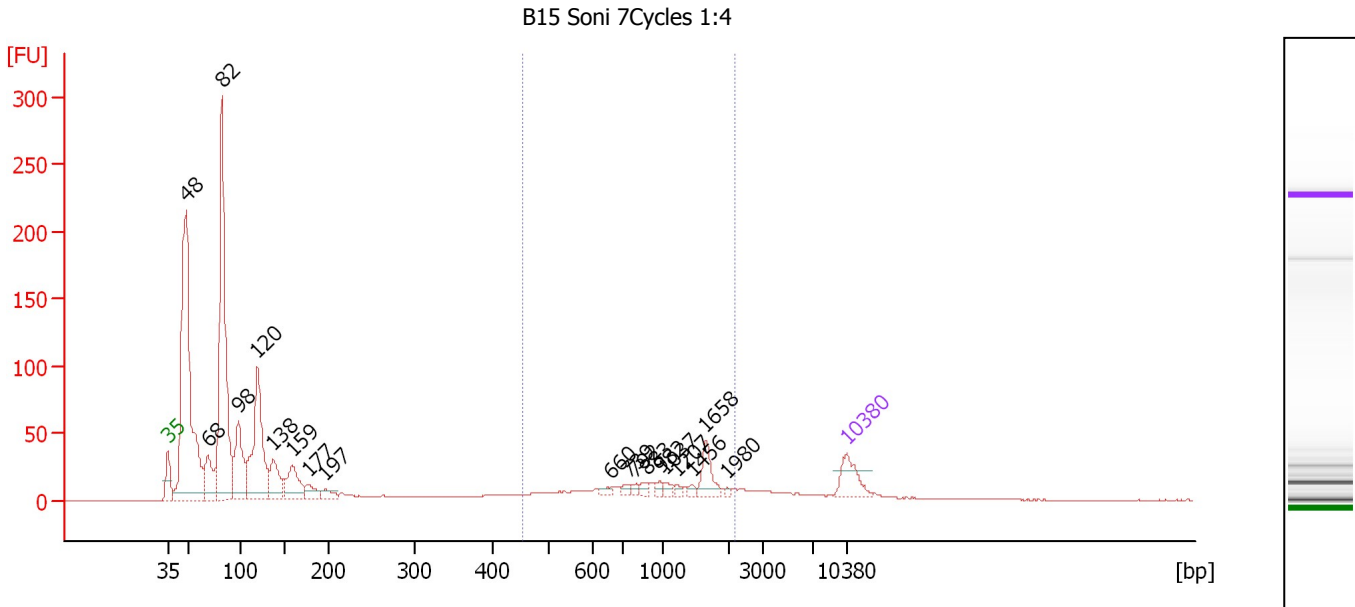
**Region table for sample 9 : B17 Soni 7Cycles 1:4**

From [bp]	To [bp]	Average Size [bp]	Molarity [pmol/l]	Conc. [pg/μl]	Corr. Area	% of Total	Size distribution in CV [%]	Color
395	1,977	836	1,452.7	632.73	332.8	15	48.5	Blue

Assay Class: High Sensitivity DNA Assay  
 Data Path: C:\...ents and Settings\Bioanalyzer\2012-07-10\2012-07-10\_006.xad

Created: 7/10/2012 2:15:28 PM  
 Modified: 7/10/2012 2:59:15 PM

**Electropherogram Summary Continued ...**



**Overall Results for sample 10 : B15 Soni 7Cycles 1:4**

Number of peaks found: 19                      Corr. Area 1: 237.6  
 Noise: 0.3

**Peak table for sample 10 : B15 Soni 7Cycles 1:4**

Peak	Size [bp]	Conc. [pg/μl]	Molarity [pmol/l]	Observations
1	35	125.00	5,411.3	Lower Marker
2	48	1,451.97	46,136.4	
3	68	189.64	4,205.7	
4	82	1,146.40	21,180.5	
5	98	287.19	4,425.2	
6	120	550.63	6,965.1	
7	138	149.92	1,647.7	
8	159	155.48	1,481.3	
9	177	53.86	461.8	
10	197	32.25	248.3	
11	660	17.38	39.9	
12	739	14.46	29.7	
13	792	12.62	24.1	
14	883	15.79	27.1	
15	982	15.87	24.5	
16	1,037	14.85	21.7	
17	1,207	8.48	10.6	
18	1,456	11.10	11.5	
19	1,658	70.17	64.1	
20	1,980	5.86	4.5	
21	10,380	75.00	10.9	Upper Marker

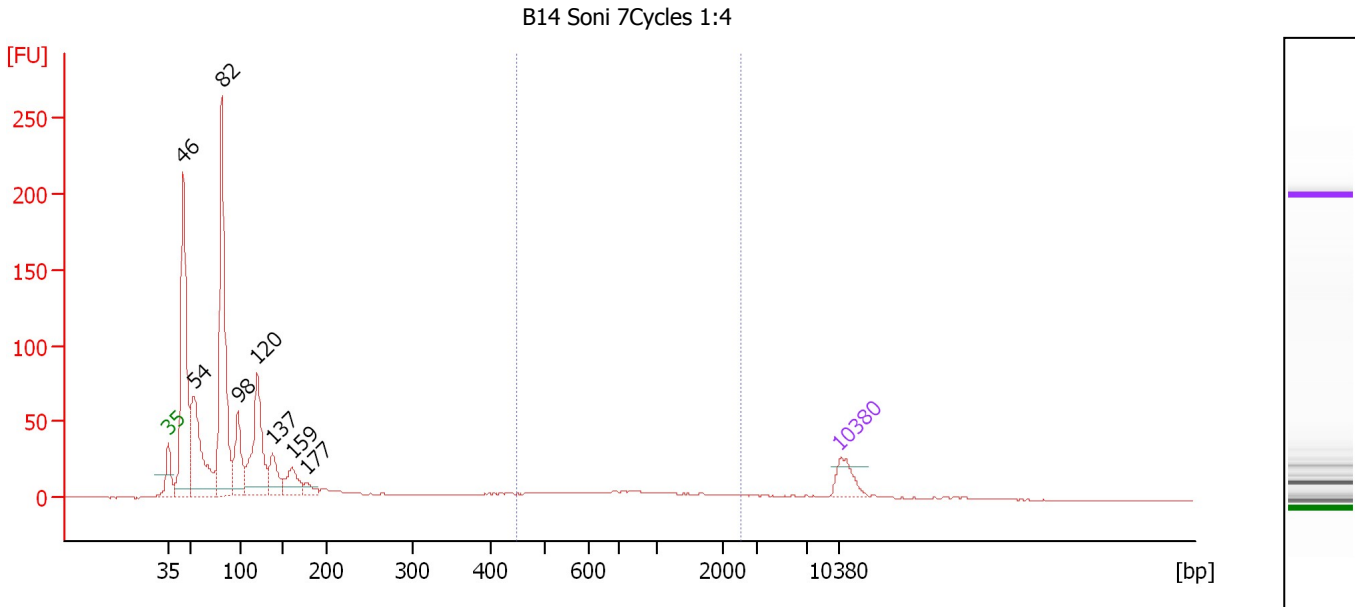
**Region table for sample 10 : B15 Soni 7Cycles 1:4**

From [bp]	To [bp]	Average Size [bp]	Molarity [pmol/l]	Conc. [pg/μl]	Corr. Area	% of Total	Size distribution in CV [%]	Color
454	2,164	1,092	711.2	395.77	237.6	13	44.5	Blue

Assay Class: High Sensitivity DNA Assay  
 Data Path: C:\...ents and Settings\Bioanalyzer\2012-07-10\2012-07-10\_006.xad

Created: 7/10/2012 2:15:28 PM  
 Modified: 7/10/2012 2:59:15 PM

**Electropherogram Summary Continued ...**



**Overall Results for sample 11 : B14 Soni 7Cycles 1:4**

Number of peaks found: 8                      Corr. Area 1: 99.3  
 Noise: 0.2

**Peak table for sample 11 : B14 Soni 7Cycles 1:4**

Peak	Size [bp]	Conc. [pg/μl]	Molarity [pmol/l]	Observations
1	35	125.00	5,411.3	Lower Marker
2	46	1,102.79	36,673.4	
3	54	647.38	18,036.5	
4	82	1,160.56	21,426.7	
5	98	282.70	4,369.0	
6	120	546.12	6,913.4	
7	137	156.41	1,725.4	
8	159	138.07	1,312.5	
9	177	44.69	383.4	
10	10,380	75.00	10.9	Upper Marker

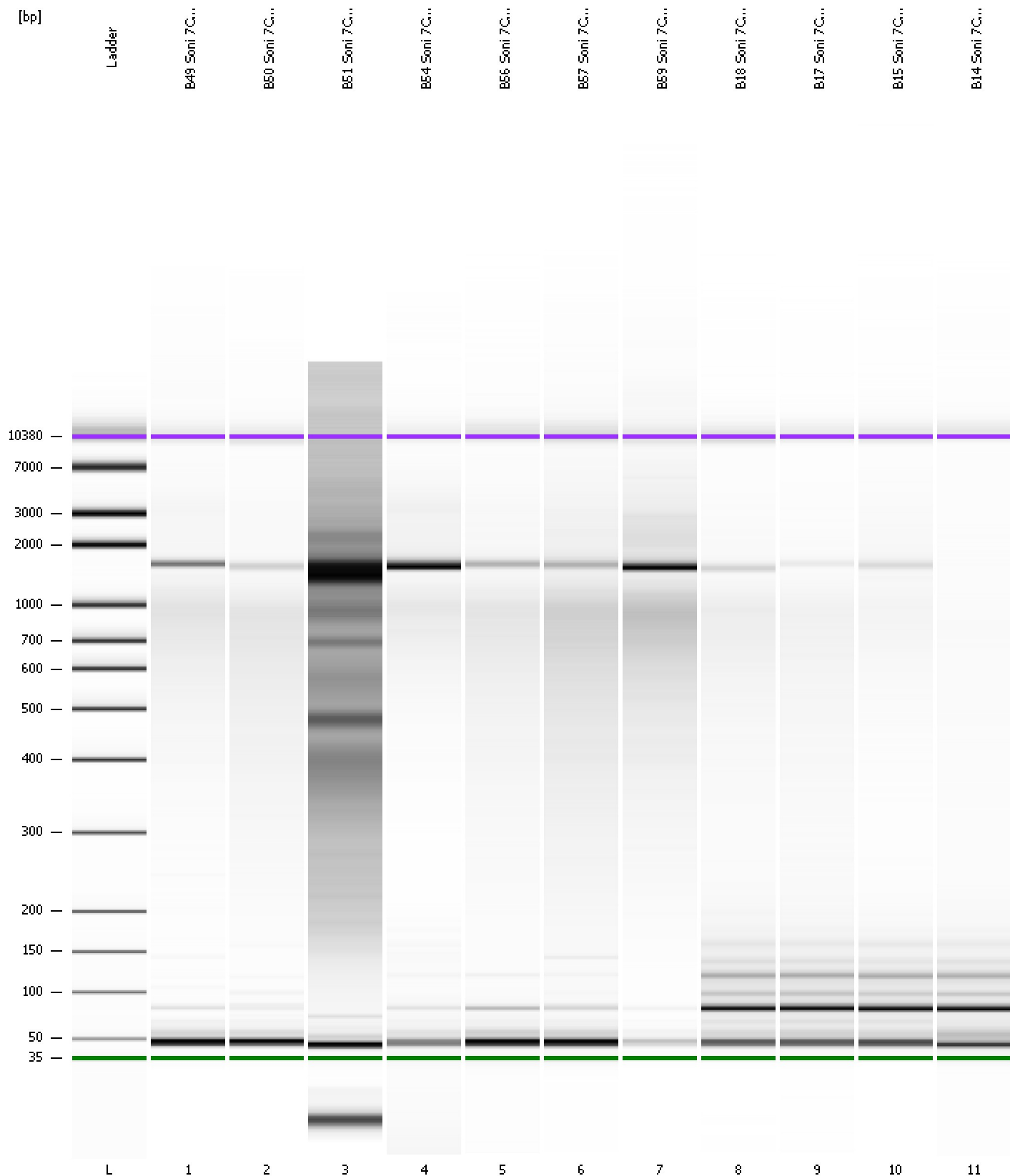
**Region table for sample 11 : B14 Soni 7Cycles 1:4**

From [bp]	To [bp]	Average Size [bp]	Molarity [pmol/l]	Conc. [pg/μl]	Corr. Area	% of Total	Size distribution in CV [%]	Color
446	2,506	948	439.2	208.42	99.3	7	54.1	Blue

Assay Class: High Sensitivity DNA Assay  
Data Path: C:\...ents and Settings\Bioanalyzer\2012-07-10\2012-07-10\_006.xad

Created: 7/10/2012 2:15:28 PM  
Modified: 7/10/2012 2:59:15 PM

**Gel Image**



Assay Class: High Sensitivity DNA Assay  
 Data Path: C:\...ents and Settings\Bioanalyzer\2012-07-10\2012-07-10\_006.xad

Created: 7/10/2012 2:15:28 PM  
 Modified: 7/10/2012 2:59:15 PM

**Run Logbook**

Description	Number	Source	Category	Sub Category	Time	Time Zone	User	Host
Run ended on port 1 (Number of wells acquired: 12)		Instrument	Run		7/10/2012 2:56:47 PM	(GMT --07:00) Pacific Standard Time	UC Davis	D8XSMGH1
Run started on port 1 (File: C:\Documents and Settings\Bioanalyzer\2012-07-10\2012-07-10_006.xad)		Instrument	Run		7/10/2012 2:15:34 PM	(GMT --07:00) Pacific Standard Time	UC Davis	D8XSMGH1
Product Number : G2938B		Instrument	Run		7/10/2012 2:15:34 PM	(GMT --07:00) Pacific Standard Time	UC Davis	D8XSMGH1
Name :		Instrument	Run		7/10/2012 2:15:34 PM	(GMT --07:00) Pacific Standard Time	UC Davis	D8XSMGH1
Vendor : Agilent Technologies		Instrument	Run		7/10/2012 2:15:34 PM	(GMT --07:00) Pacific Standard Time	UC Davis	D8XSMGH1
Serial# : DE13701086		Instrument	Run		7/10/2012 2:15:34 PM	(GMT --07:00) Pacific Standard Time	UC Davis	D8XSMGH1
Firmware : C.01.069		Instrument	Run		7/10/2012 2:15:34 PM	(GMT --07:00) Pacific Standard Time	UC Davis	D8XSMGH1
Cartridge : Electrode		Instrument	Run		7/10/2012 2:15:34 PM	(GMT --07:00) Pacific Standard Time	UC Davis	D8XSMGH1