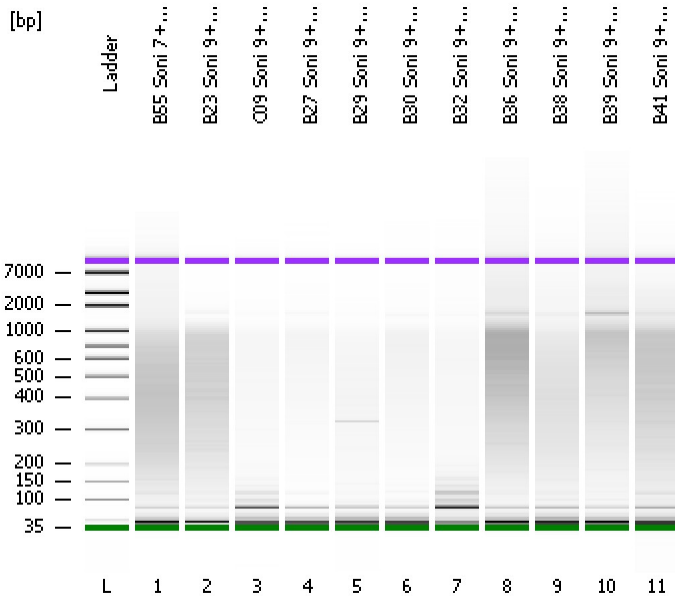


Assay Class: High Sensitivity DNA Assay
Data Path: C:\...ents and Settings\Bioanalyzer\2012-07-10\2012-07-10_008.xad

Created: 7/10/2012 4:30:18 PM
Modified: 7/10/2012 5:14:30 PM

Electrophoresis File Run Summary



Instrument Information:

Instrument Name: DE13701086 Firmware: C.01.069
Serial#: DE13701086 Type: G2938B

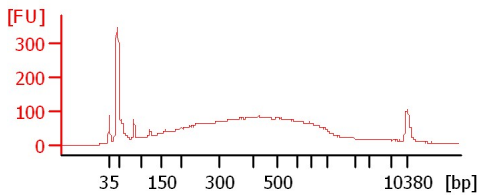
Assay Information:

Assay Origin Path: C:\Program Files\Agilent\2100 bioanalyzer\2100 expert\assays\dsDNA\High Sensitivity DNA.xsy
Assay Class: High Sensitivity DNA Assay
Version: 1.03
Assay Comments: Copyright © 2003-2010 Agilent Technologies

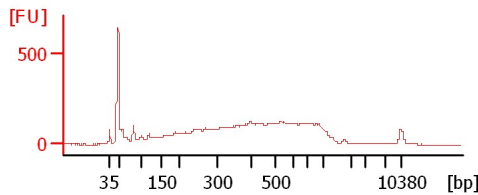
Chip Information:

Chip Lot #:
Reagent Kit Lot #:
Chip Comments:

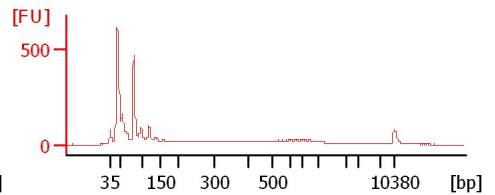
B55 Soni 7+4+3 Cycles 1:2



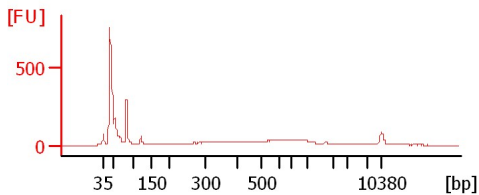
B23 Soni 9+4+3 Cycles 1:2



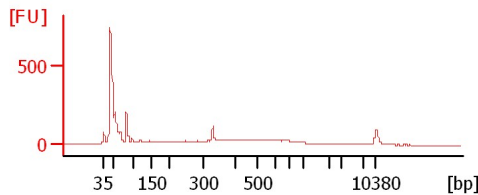
C09 Soni 9+4+3 Cycles 1:2



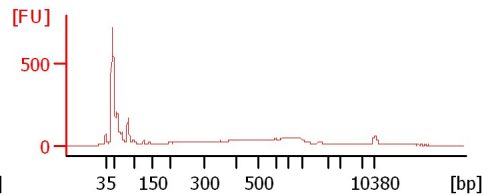
B27 Soni 9+4Cycles 1:2



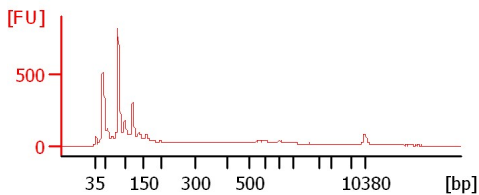
B29 Soni 9+4Cycles 1:2



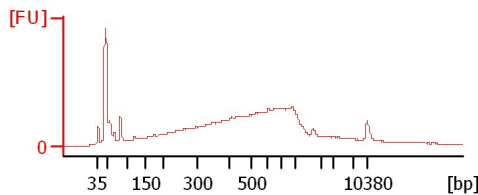
B30 Soni 9+4Cycles 1:2



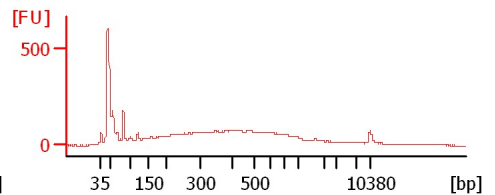
B32 Soni 9+4Cycles 1:2



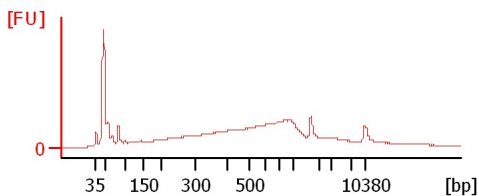
B36 Soni 9+4Cycles 1:2



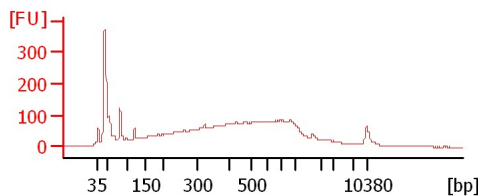
B38 Soni 9+4Cycles 1:2



B39 Soni 9+4Cycles 1:2



B41 Soni 9+4Cycles 1:2



Assay Class: High Sensitivity DNA Assay
 Data Path: C:\...ents and Settings\Bioanalyzer\2012-07-10\2012-07-10_008.xad

Created: 7/10/2012 4:30:18 PM
 Modified: 7/10/2012 5:14:30 PM

Electrophoresis File Run Summary (Chip Summary)

Sample Name	Sample Comment	Rest. Digest	Status	Observation	Result Label	Result Color
B55 Soni 7+4+3 Cycles 1:2		<input type="checkbox"/>	✓			
B23 Soni 9+4+3 Cycles 1:2		<input type="checkbox"/>	✓			
C09 Soni 9+4+3 Cycles 1:2		<input type="checkbox"/>	✓			
B27 Soni 9+4Cycles 1:2		<input type="checkbox"/>	✓			
B29 Soni 9+4Cycles 1:2		<input type="checkbox"/>	✓			
B30 Soni 9+4Cycles 1:2		<input type="checkbox"/>	✓			
B32 Soni 9+4Cycles 1:2		<input type="checkbox"/>	✓			
B36 Soni 9+4Cycles 1:2		<input type="checkbox"/>	✓			
B38 Soni 9+4Cycles 1:2		<input type="checkbox"/>	✓			
B39 Soni 9+4Cycles 1:2		<input type="checkbox"/>	✓			
B41 Soni 9+4Cycles 1:2		<input type="checkbox"/>	✓			
Ladder		<input type="checkbox"/>	✓			

Chip Lot #

Reagent Kit Lot #

Chip Comments :

Assay Class: High Sensitivity DNA Assay
Data Path: C:\...ents and Settings\Bioanalyzer\2012-07-10\2012-07-10_008.xad

Created: 7/10/2012 4:30:18 PM
Modified: 7/10/2012 5:14:30 PM

Electrophoresis Assay Details

General Analysis Settings

Number of Available Sample and Ladder Wells (Max.) : 12
Minimum Visible Range [s] : 32
Maximum Visible Range [s] : 138
Start Analysis Time Range [s] : 33
End Analysis Time Range [s] : 137.5
Ladder Concentration [pg/μl] : 1950
Uses Standard Area for Ladder Fragments
Lower Marker Concentration [pg/μl] : 125
Upper Marker Concentration [pg/μl] : 75
Used Upper Marker for Quantitation
Standard Curve Fit is Point to Point
Show Data Aligned to Lower and Upper Marker

Integrator Settings

Integration Start Time [s] : 33.05
Integration End Time [s] : 137
Slope Threshold : 0.8
Height Threshold [FU] : 5
Area Threshold : 0.1
Width Threshold [s] : 0.6
Baseline Plateau [s] : 0.5

Filter Settings

Filter Width [s] : 0.5
Polynomial Order : 4

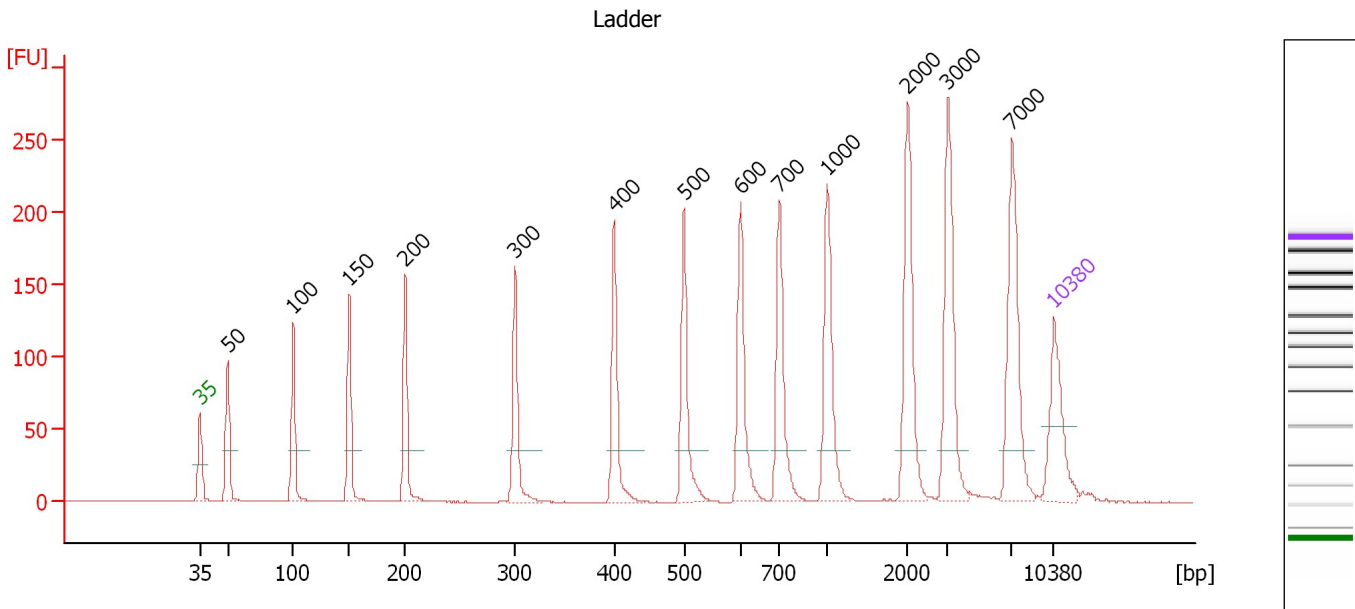
Ladder

Ladder Peak	Size	Area
1	35	160
2	50	210
3	100	208
4	150	221
5	200	242
6	300	270
7	400	305
8	500	306
9	600	336
10	700	321
11	1000	366
12	2000	413
13	3000	411
14	7000	400
15	10380	214

Assay Class: High Sensitivity DNA Assay
 Data Path: C:\...ents and Settings\Bioanalyzer\2012-07-10\2012-07-10_008.xad

Created: 7/10/2012 4:30:18 PM
 Modified: 7/10/2012 5:14:30 PM

Electropherogram Summary



Overall Results for Ladder

Noise: 0.2

Peak table for Ladder

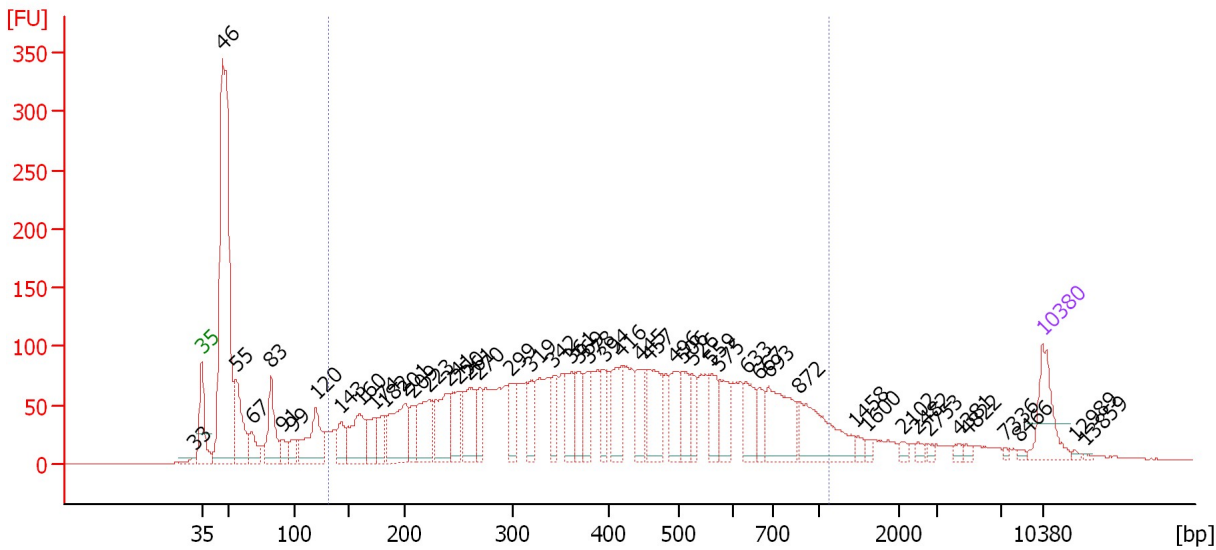
Peak	Size [bp]	Conc. [pg/μl]	Molarity [pmol/l]	Observations
1	35	125.00	5,411.3	Lower Marker
2	50	150.00	4,545.5	Ladder Peak
3	100	150.00	2,272.7	Ladder Peak
4	150	150.00	1,515.2	Ladder Peak
5	200	150.00	1,136.4	Ladder Peak
6	300	150.00	757.6	Ladder Peak
7	400	150.00	568.2	Ladder Peak
8	500	150.00	454.5	Ladder Peak
9	600	150.00	378.8	Ladder Peak
10	700	150.00	324.7	Ladder Peak
11	1,000	150.00	227.3	Ladder Peak
12	2,000	150.00	113.6	Ladder Peak
13	3,000	150.00	75.8	Ladder Peak
14	7,000	150.00	32.5	Ladder Peak
15	10,380	75.00	10.9	Upper Marker

Assay Class: High Sensitivity DNA Assay
 Data Path: C:\...ents and Settings\Bioanalyzer\2012-07-10\2012-07-10_008.xad

Created: 7/10/2012 4:30:18 PM
 Modified: 7/10/2012 5:14:30 PM

Electropherogram Summary Continued ...

B55 Soni 7+4+3 Cycles 1:2



Overall Results for sample 1 : B55 Soni 7+4+3 Cycles 1:2

Number of peaks found: 49 Corr. Area 1: 3,622.2
 Noise: 0.2

Peak table for sample 1 : B55 Soni 7+4+3 Cycles 1:2

Peak	Size [bp]	Conc. [pg/μl]	Molarity [pmol/l]	Observations
1	33	0.00	0.0	
2	35	125.00	5,411.3	Lower Marker
3	46	947.76	30,924.5	
4	55	167.79	4,596.6	
5	67	52.07	1,172.4	
6	83	131.04	2,404.3	
7	91	35.31	589.0	
8	99	31.22	477.3	
9	120	147.64	1,860.2	
10	143	61.09	647.3	
11	160	127.53	1,208.0	
12	174	61.21	533.1	
13	182	52.81	440.3	
14	201	155.09	1,168.5	
15	209	51.22	372.2	
16	223	128.96	876.9	
17	241	128.69	810.5	
18	250	87.38	528.6	
19	261	109.98	638.9	
20	270	60.75	341.3	
21	299	77.21	390.9	
22	319	55.13	261.9	
23	342	59.36	262.7	
24	361	75.93	318.7	
25	369	62.49	256.9	
26	378	53.24	213.4	

Assay Class: High Sensitivity DNA Assay
 Data Path: C:\...ents and Settings\Bioanalyzer\2012-07-10\2012-07-10_008.xad


Created: 7/10/2012 4:30:18 PM
 Modified: 7/10/2012 5:14:30 PM

Electropherogram Summary Continued ...

... Peak table for sample 1 : B55 Soni 7+4+3 Cycles 1:2

Peak	Size [bp]	Conc. [pg/µl]	Molarity [pmol/l]	Observations
27	394	52.24	200.7	
28	416	104.18	379.4	
29	445	69.21	235.4	
30	457	115.96	384.3	
31	496	74.92	228.9	
32	506	63.45	189.8	
33	526	46.53	134.1	
34	559	59.56	161.4	
35	575	63.19	166.6	
36	633	63.03	150.9	
37	667	39.93	90.6	
38	693	134.06	293.3	
39	872	135.32	235.2	
40	1,458	11.25	11.7	
41	1,600	7.31	6.9	
42	2,102	8.76	6.3	
43	2,482	7.79	4.8	
44	2,753	6.18	3.4	
45	4,381	7.43	2.6	
46	4,822	6.04	1.9	
47	7,336	3.95	0.8	
48	8,466	4.00	0.7	
49	10,380	75.00	10.9	Upper Marker
50	12,989	0.00	0.0	
51	13,859	0.00	0.0	

Region table for sample 1 : B55 Soni 7+4+3 Cycles 1:2

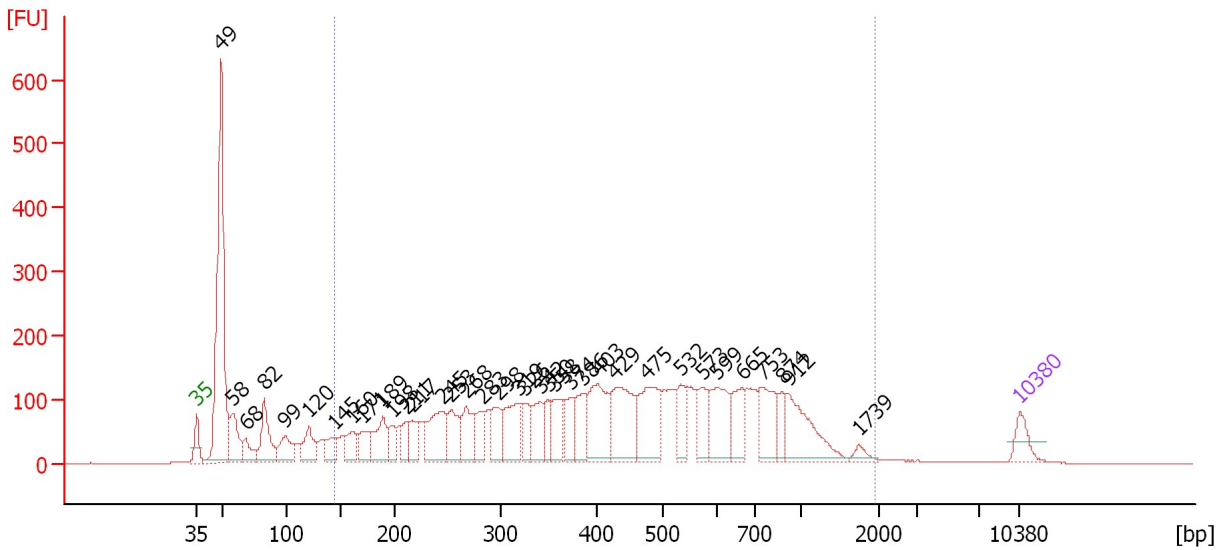
From [bp]	To [bp]	Average Size [bp]	Molarity [pmol/l]	Conc. [pg/µl]	Corr. Area	% of Total	Size distribution in CV [%]	Color
131	1,120	427	16,201.5	3,301.34	3,622.2	70	46.0	

Assay Class: High Sensitivity DNA Assay
 Data Path: C:\...ents and Settings\Bioanalyzer\2012-07-10\2012-07-10_008.xad

Created: 7/10/2012 4:30:18 PM
 Modified: 7/10/2012 5:14:30 PM

Electropherogram Summary Continued ...

B23 Soni 9+4+3 Cycles 1:2



Overall Results for sample 2 : B23 Soni 9+4+3 Cycles 1:2

Number of peaks found: 36 Corr. Area 1: 5,325.0
 Noise: 0.3

Peak table for sample 2 : B23 Soni 9+4+3 Cycles 1:2

Peak	Size [bp]	Conc. [pg/μl]	Molarity [pmol/l]	Observations
1	35	125.00	5,411.3	Lower Marker
2	49	1,635.56	50,814.8	
3	58	258.10	6,795.9	
4	68	121.94	2,730.6	
5	82	284.39	5,227.5	
6	99	177.64	2,722.1	
7	120	192.54	2,422.5	
8	145	112.13	1,174.6	
9	160	139.93	1,321.5	
10	171	147.36	1,303.3	
11	189	211.47	1,694.4	
12	198	105.99	811.1	
13	211	97.66	701.1	
14	217	128.51	899.0	
15	245	332.86	2,056.0	
16	253	186.21	1,113.6	
17	268	216.46	1,223.9	
18	283	126.29	677.1	
19	298	152.44	774.6	
20	319	273.05	1,298.4	
21	326	122.49	569.5	
22	342	172.07	762.2	
23	350	99.34	430.2	
24	358	184.79	782.8	
25	374	128.24	518.9	
26	386	185.22	727.8	

Assay Class: High Sensitivity DNA Assay
 Data Path: C:\...ents and Settings\Bioanalyzer\2012-07-10\2012-07-10_008.xad


Created: 7/10/2012 4:30:18 PM
 Modified: 7/10/2012 5:14:30 PM

Electropherogram Summary Continued ...

... Peak table for sample 2 : B23 Soni 9+4+3 Cycles 1:2

Peak	Size [bp]	Conc. [pg/µl]	Molarity [pmol/l]	Observations
27	403	340.57	1,279.6	
28	429	380.51	1,342.6	
29	475	356.18	1,135.3	
30	532	163.14	464.5	
31	573	141.77	374.7	
32	599	250.58	634.1	
33	665	178.74	407.3	
34	753	222.92	448.5	
35	874	82.96	143.8	
36	912	299.76	497.9	
37	1,739	29.04	25.3	
38	10,380	75.00	10.9	Upper Marker

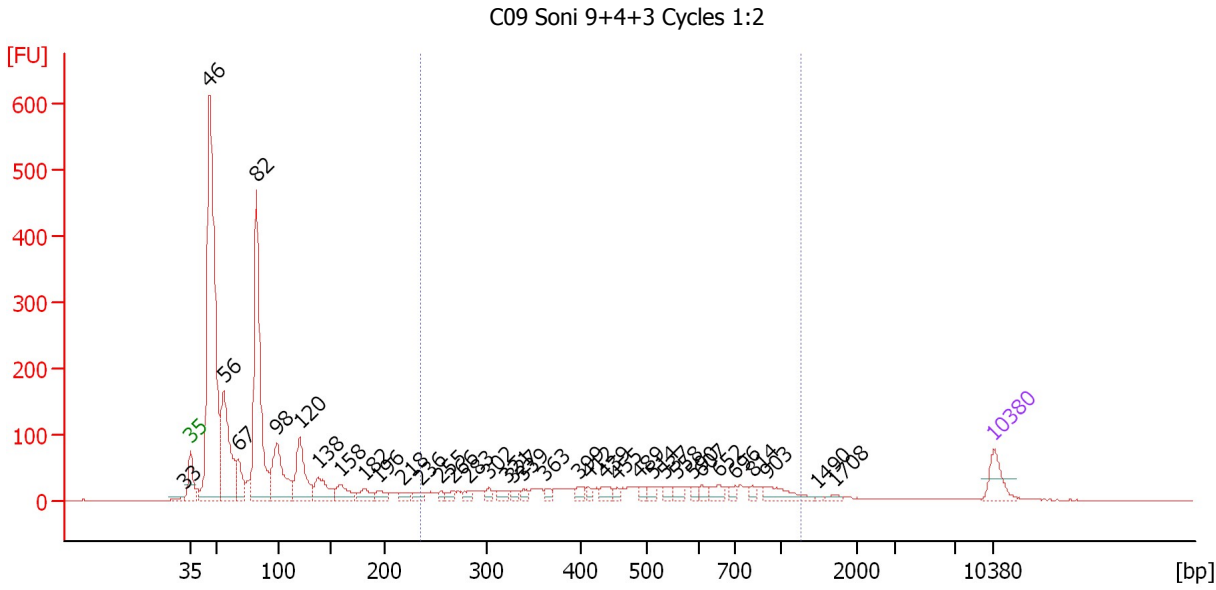
Region table for sample 2 : B23 Soni 9+4+3 Cycles 1:2

From [bp]	To [bp]	Average Size [bp]	Molarity [pmol/l]	Conc. [pg/µl]	Corr. Area	% of Total	Size distribution in CV [%]	Color
144	1,951	497	29,114.7	6,541.97	5,325.0	75	55.5	

Assay Class: High Sensitivity DNA Assay
 Data Path: C:\...ents and Settings\Bioanalyzer\2012-07-10\2012-07-10_008.xad

Created: 7/10/2012 4:30:18 PM
 Modified: 7/10/2012 5:14:30 PM

Electropherogram Summary Continued ...



Overall Results for sample 3 : C09 Soni 9+4+3 Cycles 1:2

Number of peaks found: 37 Corr. Area 1: 772.0
 Noise: 0.3

Peak table for sample 3 : C09 Soni 9+4+3 Cycles 1:2

Peak	Size [bp]	Conc. [pg/μl]	Molarity [pmol/l]	Observations
1	33	0.00	0.0	
2	35	125.00	5,411.3	Lower Marker
3	46	2,037.75	67,501.3	
4	56	602.71	16,403.3	
5	67	146.72	3,300.9	
6	82	1,089.80	20,124.7	
7	98	381.90	5,875.6	
8	120	297.81	3,760.2	
9	138	145.36	1,599.1	
10	158	91.34	873.1	
11	182	61.98	516.6	
12	196	41.68	322.2	
13	218	33.50	233.3	
14	236	31.03	199.1	
15	255	18.14	107.7	
16	266	24.35	138.6	
17	283	23.87	127.9	
18	302	21.64	108.6	
19	321	32.87	154.9	
20	327	23.33	108.1	
21	339	22.22	99.3	
22	363	18.81	78.6	
23	399	30.50	115.8	
24	412	18.59	68.4	
25	439	34.34	118.6	
26	455	18.80	62.6	

Assay Class: High Sensitivity DNA Assay
 Data Path: C:\...ents and Settings\Bioanalyzer\2012-07-10\2012-07-10_008.xad

Created: 7/10/2012 4:30:18 PM
 Modified: 7/10/2012 5:14:30 PM

Electropherogram Summary Continued ...

... Peak table for sample 3 : C09 Soni 9+4+3 Cycles 1:2

Peak	Size [bp]	Conc. [pg/µl]	Molarity [pmol/l]	Observations
27	489	20.92	64.8	
28	514	26.01	76.6	
29	537	29.21	82.5	
30	558	26.94	73.2	
31	590	19.78	50.8	
32	607	22.98	57.4	
33	652	36.91	85.8	
34	696	19.79	43.1	
35	814	15.64	29.1	
36	903	69.65	116.9	
37	1,490	3.55	3.6	
38	1,708	10.74	9.5	
39	▶ 10,380	75.00	10.9	Upper Marker

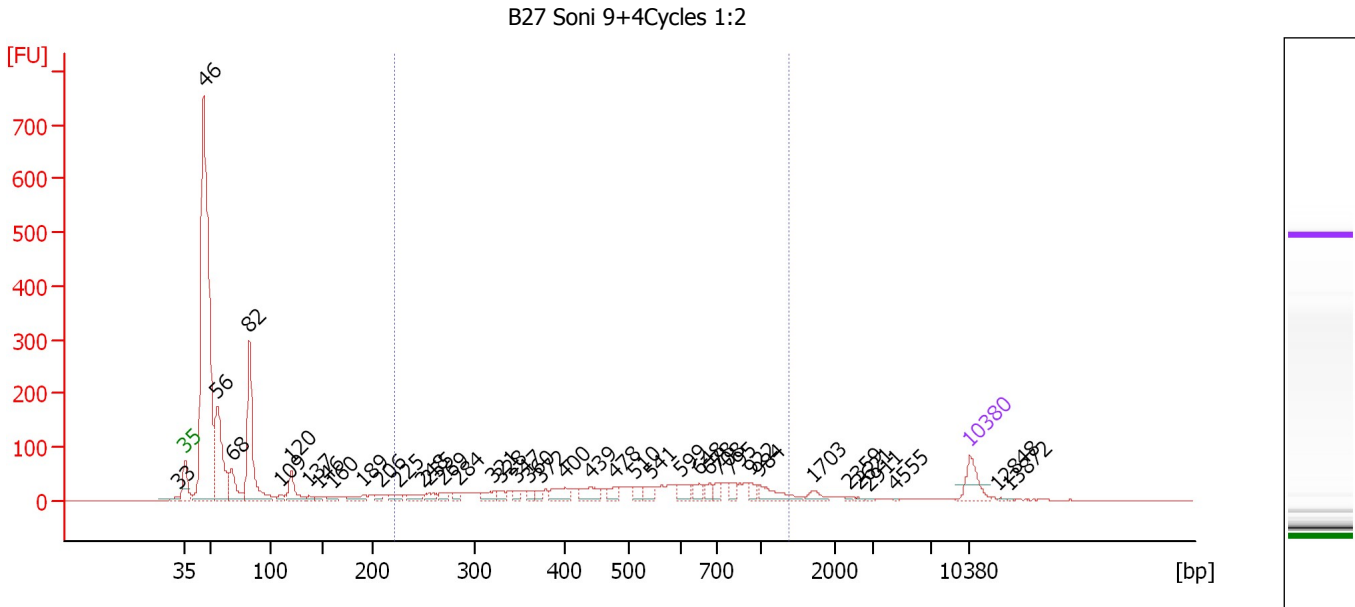
Region table for sample 3 : C09 Soni 9+4+3 Cycles 1:2

From [bp]	To [bp]	Average Size [bp]	Molarity [pmol/l]	Conc. [pg/µl]	Corr. Area	% of Total	Size distribution in CV [%]	Color
236	1,278	525	3,400.1	939.39	772.0	21	41.8	■

Assay Class: High Sensitivity DNA Assay
 Data Path: C:\...ents and Settings\Bioanalyzer\2012-07-10\2012-07-10_008.xad

Created: 7/10/2012 4:30:18 PM
 Modified: 7/10/2012 5:14:30 PM

Electropherogram Summary Continued ...



Overall Results for sample 4 : B27 Soni 9+4Cycles 1:2

Number of peaks found: 41 Corr. Area 1: 987.9
 Noise: 0.3

Peak table for sample 4 : B27 Soni 9+4Cycles 1:2

Peak	Size [bp]	Conc. [pg/µl]	Molarity [pmol/l]	Observations
1	33	0.00	0.0	
2	35	125.00	5,411.3	Lower Marker
3	46	2,375.33	78,259.4	
4	56	527.33	14,306.2	
5	68	159.49	3,564.5	
6	82	581.31	10,689.8	
7	109	22.68	315.5	
8	120	116.61	1,474.8	
9	137	18.01	198.5	
10	146	14.84	154.3	
11	160	26.94	255.6	
12	189	38.03	304.5	
13	206	16.80	123.3	
14	225	31.52	211.8	
15	248	39.01	238.6	
16	255	29.47	175.1	
17	269	25.06	141.3	
18	284	20.47	109.3	
19	321	42.00	198.2	
20	328	24.57	113.5	
21	347	18.71	81.8	
22	360	21.79	91.6	
23	372	20.67	84.2	
24	400	60.28	228.3	
25	439	67.79	233.9	
26	478	36.13	114.5	

Assay Class: High Sensitivity DNA Assay
 Data Path: C:\...ents and Settings\Bioanalyzer\2012-07-10\2012-07-10_008.xad

Created: 7/10/2012 4:30:18 PM
 Modified: 7/10/2012 5:14:30 PM

Electropherogram Summary Continued ...

... Peak table for sample 4 : B27 Soni 9+4Cycles 1:2

Peak	Size [bp]	Conc. [pg/µl]	Molarity [pmol/l]	Observations
27	510	30.40	90.3	
28	541	38.20	107.0	
29	599	48.93	123.7	
30	648	36.46	85.2	
31	678	30.54	68.3	
32	708	25.89	55.4	
33	795	29.91	57.0	
34	922	25.48	41.9	
35	984	64.51	99.4	
36	1,703	25.09	22.3	
37	2,359	3.57	2.3	
38	2,621	3.79	2.2	
39	2,911	3.68	1.9	
40	4,555	2.45	0.8	
41	10,380	75.00	10.9	Upper Marker
42	12,848	0.00	0.0	
43	13,872	0.00	0.0	

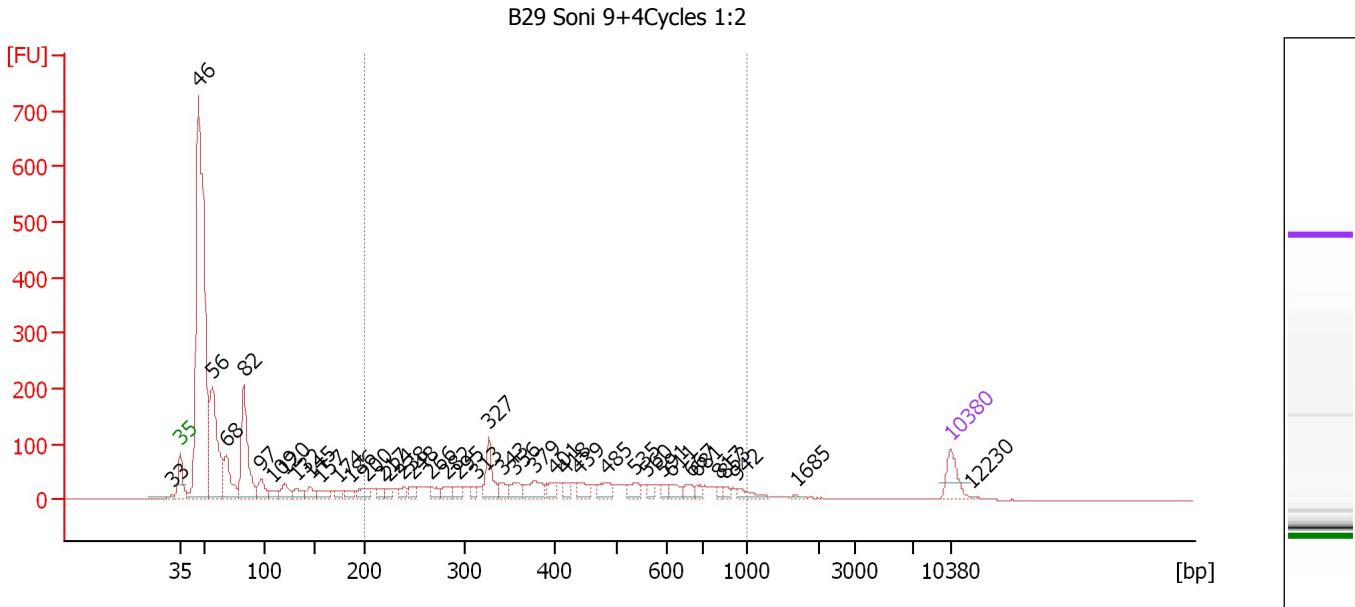
Region table for sample 4 : B27 Soni 9+4Cycles 1:2

From [bp]	To [bp]	Average Size [bp]	Molarity [pmol/l]	Conc. [pg/µl]	Corr. Area	% of Total	Size distribution in CV [%]	Color
220	1,361	555	3,897.9	1,106.11	987.9	28	43.4	■

Assay Class: High Sensitivity DNA Assay
 Data Path: C:\...ents and Settings\Bioanalyzer\2012-07-10\2012-07-10_008.xad

Created: 7/10/2012 4:30:18 PM
 Modified: 7/10/2012 5:14:30 PM

Electropherogram Summary Continued ...



Overall Results for sample 5 : B29 Soni 9+4Cycles 1:2

Number of peaks found: 41 Corr. Area 1: 1,258.4
 Noise: 0.4

Peak table for sample 5 : B29 Soni 9+4Cycles 1:2

Peak	Size [bp]	Conc. [pg/µl]	Molarity [pmol/l]	Observations
1	33	0.00	0.0	
2	35	125.00	5,411.3	Lower Marker
3	46	2,465.59	81,436.0	
4	56	619.06	16,778.8	
5	68	217.65	4,844.6	
6	82	478.07	8,780.9	
7	97	94.67	1,480.1	
8	109	46.72	652.2	
9	120	73.88	931.7	
10	132	52.58	604.6	
11	145	54.00	564.4	
12	157	50.31	486.9	
13	174	35.75	311.3	
14	186	43.98	359.0	
15	200	53.70	406.0	
16	217	34.84	243.8	
17	224	27.07	183.5	
18	238	35.61	226.7	
19	248	35.73	218.5	
20	266	36.20	206.2	
21	282	49.54	266.0	
22	295	38.38	197.0	
23	313	28.28	136.9	
24	327	128.85	596.3	
25	343	43.24	191.1	
26	356	52.30	222.6	

Assay Class: High Sensitivity DNA Assay
 Data Path: C:\...ents and Settings\Bioanalyzer\2012-07-10\2012-07-10_008.xad

Created: 7/10/2012 4:30:18 PM
 Modified: 7/10/2012 5:14:30 PM

Electropherogram Summary Continued ...

... Peak table for sample 5 : B29 Soni 9+4Cycles 1:2

Peak	Size [bp]	Conc. [pg/µl]	Molarity [pmol/l]	Observations
27	379	82.15	328.7	
28	401	39.43	149.0	
29	418	33.30	120.8	
30	439	53.72	185.4	
31	485	52.74	164.9	
32	535	43.88	124.4	
33	560	25.92	70.2	
34	591	22.31	57.2	
35	611	34.43	85.4	
36	667	31.57	71.7	
37	681	18.99	42.2	
38	817	14.84	27.5	
39	853	15.08	26.8	
40	942	31.90	51.3	
41	1,685	5.06	4.5	
42	10,380	75.00	10.9	Upper Marker
43	12,230	0.00	0.0	

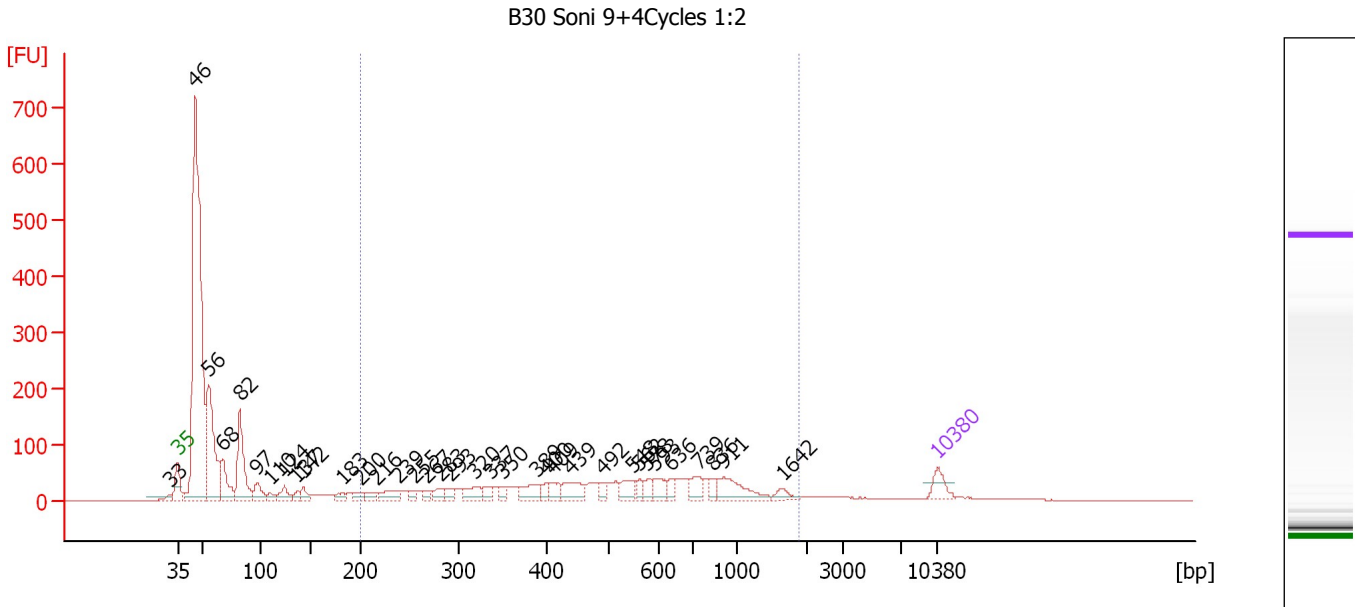
Region table for sample 5 : B29 Soni 9+4Cycles 1:2

From [bp]	To [bp]	Average Size [bp]	Molarity [pmol/l]	Conc. [pg/µl]	Corr. Area	% of Total	Size distribution in CV [%]	Color
200	1,000	448	6,141.0	1,473.09	1,258.4	31	40.0	■

Assay Class: High Sensitivity DNA Assay
 Data Path: C:\...ents and Settings\Bioanalyzer\2012-07-10\2012-07-10_008.xad

Created: 7/10/2012 4:30:18 PM
 Modified: 7/10/2012 5:14:30 PM

Electropherogram Summary Continued ...



Overall Results for sample 6 : B30 Soni 9+4Cycles 1:2

Number of peaks found: 35 Corr. Area 1: 1,369.3
 Noise: 0.3

Peak table for sample 6 : B30 Soni 9+4Cycles 1:2

Peak	Size [bp]	Conc. [pg/μl]	Molarity [pmol/l]	Observations
1	33	0.00	0.0	
2	35	125.00	5,411.3	Lower Marker
3	46	3,396.77	112,631.8	
4	56	910.83	24,729.4	
5	68	305.01	6,828.2	
6	82	530.81	9,773.2	
7	97	127.73	1,997.1	
8	110	41.58	574.1	
9	124	99.95	1,224.6	
10	137	38.03	420.5	
11	142	66.09	703.3	
12	183	42.54	353.2	
13	200	44.27	336.0	
14	216	52.94	371.4	
15	239	103.92	659.1	
16	255	40.93	243.0	
17	267	36.03	204.3	
18	283	58.50	313.7	
19	293	48.30	249.4	
20	320	104.27	493.9	
21	337	50.52	227.3	
22	350	37.31	161.5	
23	389	114.01	443.7	
24	400	39.04	148.0	
25	409	68.11	252.4	
26	439	132.64	457.9	

Assay Class: High Sensitivity DNA Assay
 Data Path: C:\...ents and Settings\Bioanalyzer\2012-07-10\2012-07-10_008.xad


Created: 7/10/2012 4:30:18 PM
 Modified: 7/10/2012 5:14:30 PM

Electropherogram Summary Continued ...

... Peak table for sample 6 : B30 Soni 9+4Cycles 1:2

Peak	Size [bp]	Conc. [pg/μl]	Molarity [pmol/l]	Observations
27	492	51.54	158.7	
28	548	91.10	251.7	
29	562	43.92	118.3	
30	578	49.86	130.7	
31	593	83.15	212.4	
32	636	39.94	95.1	
33	739	84.76	173.8	
34	836	38.21	69.2	
35	911	174.39	289.9	
36	1,642	39.07	36.0	
37	▶ 10,380	75.00	10.9	Upper Marker

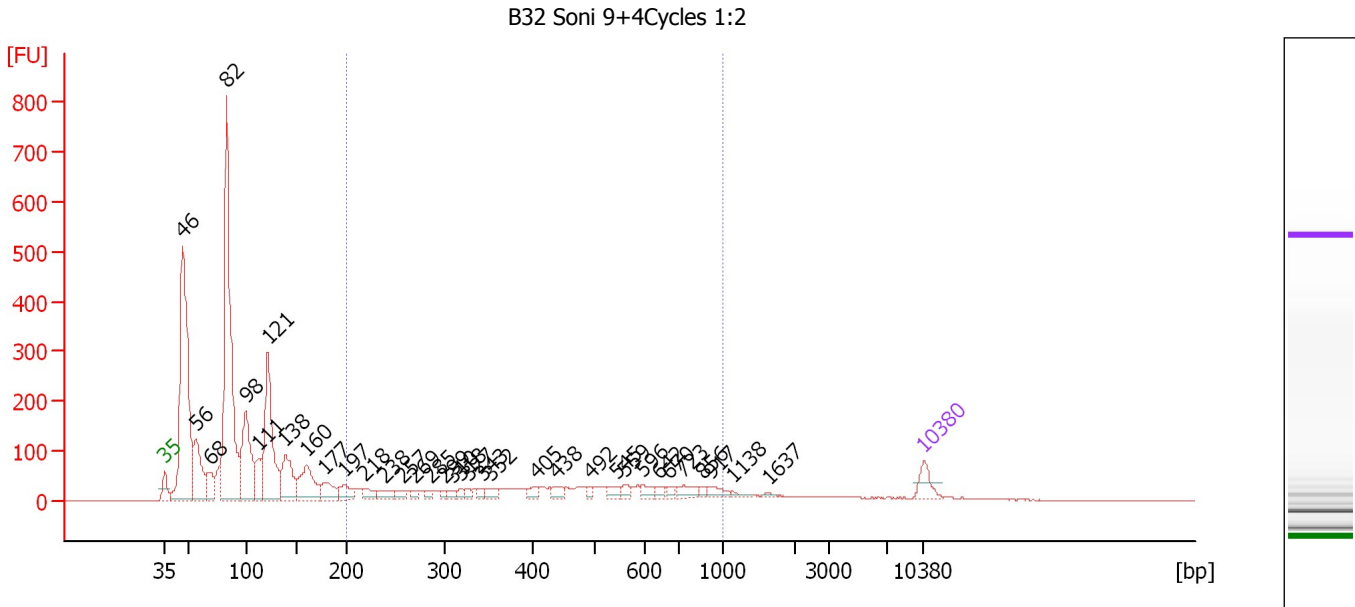
Region table for sample 6 : B30 Soni 9+4Cycles 1:2

From [bp]	To [bp]	Average Size [bp]	Molarity [pmol/l]	Conc. [pg/μl]	Corr. Area	% of Total	Size distribution in CV [%]	Color
200	1,863	574	8,144.6	2,222.24	1,369.3	35	54.6	

Assay Class: High Sensitivity DNA Assay
 Data Path: C:\...ents and Settings\Bioanalyzer\2012-07-10\2012-07-10_008.xad

Created: 7/10/2012 4:30:18 PM
 Modified: 7/10/2012 5:14:30 PM

Electropherogram Summary Continued ...



Overall Results for sample 7 : B32 Soni 9+4Cycles 1:2

Number of peaks found: 35 Corr. Area 1: 1,155.5
 Noise: 0.4

Peak table for sample 7 : B32 Soni 9+4Cycles 1:2

Peak	Size [bp]	Conc. [pg/μl]	Molarity [pmol/l]	Observations
1	35	125.00	5,411.3	Lower Marker
2	46	2,100.83	69,394.3	
3	56	462.03	12,549.4	
4	68	189.55	4,232.7	
5	82	2,320.58	42,753.0	
6	98	708.25	10,896.0	
7	111	208.39	2,837.5	
8	121	928.88	11,677.7	
9	138	363.30	3,991.2	
10	160	363.50	3,449.4	
11	177	153.30	1,311.8	
12	197	109.54	841.7	
13	218	72.73	505.0	
14	238	79.07	504.2	
15	257	45.78	269.9	
16	269	33.77	190.1	
17	285	37.75	200.9	
18	299	27.11	137.3	
19	310	30.37	148.4	
20	318	33.48	159.5	
21	327	26.99	125.2	
22	343	28.92	127.9	
23	352	54.67	235.5	
24	405	40.30	150.8	
25	438	48.45	167.6	
26	492	27.38	84.3	

Assay Class: High Sensitivity DNA Assay
 Data Path: C:\...ents and Settings\Bioanalyzer\2012-07-10\2012-07-10_008.xad

Created: 7/10/2012 4:30:18 PM
 Modified: 7/10/2012 5:14:30 PM

Electropherogram Summary Continued ...

... Peak table for sample 7 : B32 Soni 9+4Cycles 1:2

Peak	Size [bp]	Conc. [pg/µl]	Molarity [pmol/l]	Observations
27	545	48.37	134.5	
28	559	38.18	103.5	
29	596	45.63	116.1	
30	642	30.03	70.9	
31	670	23.62	53.4	
32	723	66.16	138.7	
33	856	21.08	37.3	
34	917	47.61	78.7	
35	1,138	16.85	22.4	
36	1,637	10.55	9.8	
37	10,380	75.00	10.9	Upper Marker

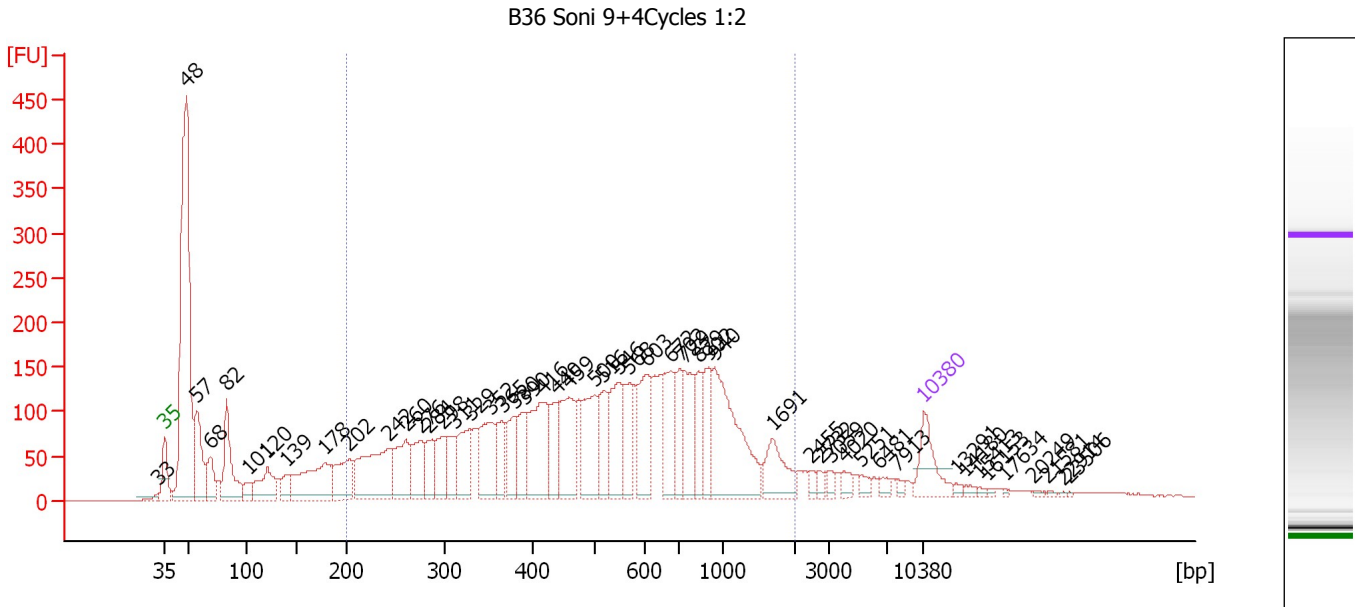
Region table for sample 7 : B32 Soni 9+4Cycles 1:2

From [bp]	To [bp]	Average Size [bp]	Molarity [pmol/l]	Conc. [pg/µl]	Corr. Area	% of Total	Size distribution in CV [%]	Color
200	1,000	469	6,966.3	1,689.26	1,155.5	22	41.3	

Assay Class: High Sensitivity DNA Assay
 Data Path: C:\...ents and Settings\Bioanalyzer\2012-07-10\2012-07-10_008.xad

Created: 7/10/2012 4:30:18 PM
 Modified: 7/10/2012 5:14:30 PM

Electropherogram Summary Continued ...



Overall Results for sample 8 : B36 Soni 9+4Cycles 1:2

Number of peaks found: 52 Corr. Area 1: 4,723.3
 Noise: 0.4

Peak table for sample 8 : B36 Soni 9+4Cycles 1:2

Peak	Size [bp]	Conc. [pg/μl]	Molarity [pmol/l]	Observations
1	33	0.00	0.0	
2	35	125.00	5,411.3	Lower Marker
3	48	1,035.55	32,479.6	
4	57	198.36	5,317.3	
5	68	91.60	2,033.7	
6	82	196.10	3,609.7	
7	101	35.94	540.8	
8	120	119.56	1,510.6	
9	139	48.18	526.7	
10	178	225.57	1,924.5	
11	202	124.12	929.4	
12	242	268.36	1,679.5	
13	260	131.28	765.0	
14	276	110.65	608.1	
15	284	73.31	391.0	
16	298	90.99	462.5	
17	311	73.43	357.9	
18	329	115.42	531.7	
19	352	155.00	667.5	
20	365	79.27	329.2	
21	380	89.99	359.1	
22	390	83.56	324.9	
23	416	208.95	760.8	
24	440	93.94	323.6	
25	459	170.01	560.9	
26	500	157.82	478.5	

Assay Class: High Sensitivity DNA Assay
 Data Path: C:\...ents and Settings\Bioanalyzer\2012-07-10\2012-07-10_008.xad

Created: 7/10/2012 4:30:18 PM
 Modified: 7/10/2012 5:14:30 PM

Electropherogram Summary Continued ...

... Peak table for sample 8 : B36 Soni 9+4Cycles 1:2

Peak	Size [bp]	Conc. [pg/µl]	Molarity [pmol/l]	Observations
27	516	102.56	301.1	
28	546	141.35	391.9	
29	568	102.24	272.6	
30	603	140.01	351.9	
31	672	113.96	256.8	
32	702	80.80	174.4	
33	729	117.27	243.8	
34	829	68.40	125.0	
35	902	87.92	147.7	
36	940	283.07	456.1	
37	1,691	83.39	74.7	
38	2,455	12.33	7.6	
39	2,732	11.47	6.4	
40	3,059	10.51	5.2	
41	4,020	16.63	6.3	
42	5,251	13.96	4.0	
43	6,481	13.55	3.2	
44	7,913	8.56	1.6	
45	10,380	75.00	10.9	Upper Marker
46	13,291	0.00	0.0	
47	14,180	0.00	0.0	
48	15,413	0.00	0.0	
49	16,153	0.00	0.0	
50	17,634	0.00	0.0	
51	20,249	0.00	0.0	
52	21,581	0.00	0.0	
53	22,914	0.00	0.0	
54	23,506	0.00	0.0	

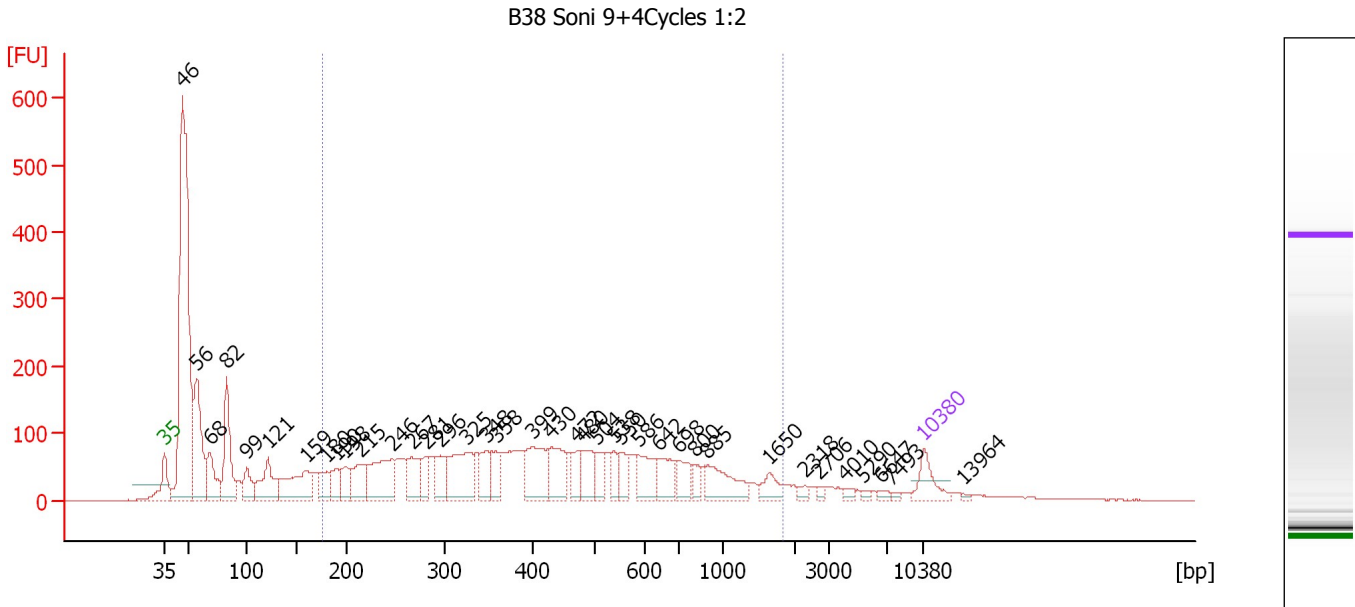
Region table for sample 8 : B36 Soni 9+4Cycles 1:2

From [bp]	To [bp]	Average Size [bp]	Molarity [pmol/l]	Conc. [pg/µl]	Corr. Area	% of Total	Size distribution in CV [%]	Color
200	2,012	605	12,747.6	3,586.82	4,723.3	67	57.2	

Assay Class: High Sensitivity DNA Assay
 Data Path: C:\...ents and Settings\Bioanalyzer\2012-07-10\2012-07-10_008.xad

Created: 7/10/2012 4:30:18 PM
 Modified: 7/10/2012 5:14:30 PM

Electropherogram Summary Continued ...



Overall Results for sample 9 : B38 Soni 9+4Cycles 1:2

Number of peaks found: 38 Corr. Area 1: 3,319.1
 Noise: 0.5

Peak table for sample 9 : B38 Soni 9+4Cycles 1:2

Peak	Size [bp]	Conc. [pg/μl]	Molarity [pmol/l]	Observations
1	35	125.00	5,411.3	Lower Marker
2	46	1,915.92	63,466.7	
3	56	469.80	12,645.2	
4	68	210.99	4,693.3	
5	82	347.37	6,395.0	
6	99	116.69	1,780.0	
7	121	209.94	2,632.8	
8	159	276.75	2,636.5	
9	180	97.18	817.6	
10	190	85.97	687.3	
11	198	105.10	802.7	
12	215	144.76	1,021.4	
13	246	275.69	1,695.6	
14	267	137.38	780.5	
15	281	79.01	426.3	
16	296	133.81	684.8	
17	325	261.17	1,217.5	
18	348	108.90	473.9	
19	358	91.05	385.2	
20	399	223.56	848.0	
21	430	179.41	631.7	
22	472	69.54	223.2	
23	480	111.77	352.8	
24	504	84.25	253.3	
25	538	58.72	165.4	
26	550	72.15	198.8	

Assay Class: High Sensitivity DNA Assay
 Data Path: C:\...ents and Settings\Bioanalyzer\2012-07-10\2012-07-10_008.xad

Created: 7/10/2012 4:30:18 PM
 Modified: 7/10/2012 5:14:30 PM

Electropherogram Summary Continued ...

... Peak table for sample 9 : B38 Soni 9+4Cycles 1:2

Peak	Size [bp]	Conc. [pg/µl]	Molarity [pmol/l]	Observations
27	586	131.32	339.4	
28	642	109.15	257.6	
29	698	87.02	188.9	
30	800	45.81	86.8	
31	885	149.47	255.9	
32	1,650	55.25	50.7	
33	2,318	17.14	11.2	
34	2,706	11.49	6.4	
35	4,010	14.06	5.3	
36	5,290	9.97	2.9	
37	6,647	12.19	2.8	
38	7,493	8.17	1.7	
39	▶ 10,380	75.00	10.9	Upper Marker
40	13,964	0.00	0.0	

Region table for sample 9 : B38 Soni 9+4Cycles 1:2

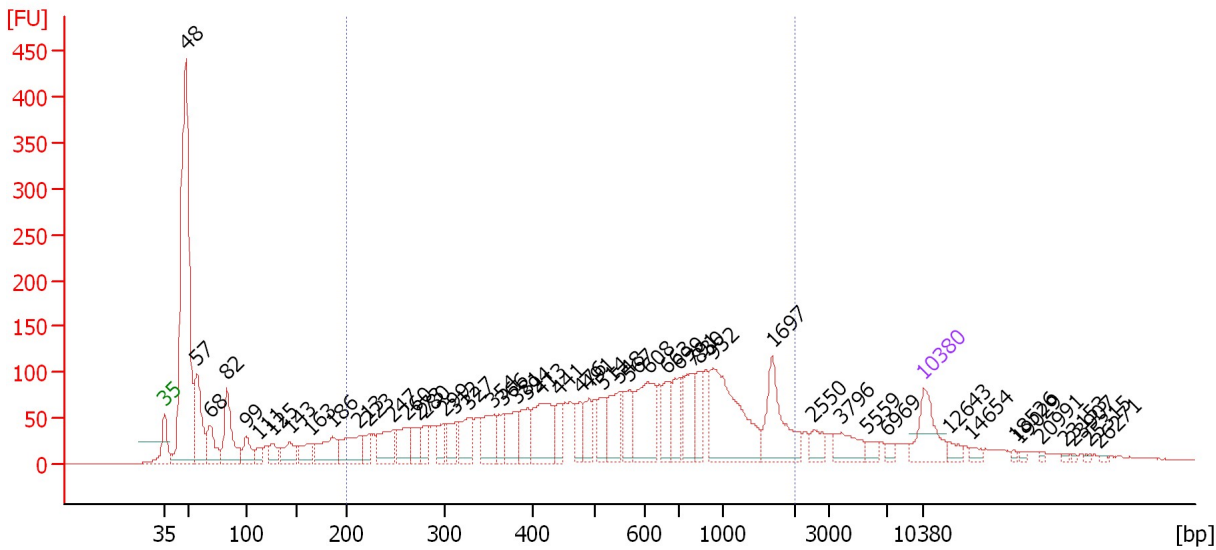
From [bp]	To [bp]	Average Size [bp]	Molarity [pmol/l]	Conc. [pg/µl]	Corr. Area	% of Total	Size distribution in CV [%]	Color
175	1,856	499	15,318.8	3,527.63	3,319.1	55	61.8	■

Assay Class: High Sensitivity DNA Assay
 Data Path: C:\...ents and Settings\Bioanalyzer\2012-07-10\2012-07-10_008.xad

Created: 7/10/2012 4:30:18 PM
 Modified: 7/10/2012 5:14:30 PM

Electropherogram Summary Continued ...

B39 Soni 9+4Cycles 1:2



Overall Results for sample 10 : B39 Soni 9+4Cycles 1:2

Number of peaks found: 50 Corr. Area 1: 3,010.2
 Noise: 0.4

Peak table for sample 10 : B39 Soni 9+4Cycles 1:2

Peak	Size [bp]	Conc. [pg/μl]	Molarity [pmol/l]	Observations
1	35	125.00	5,411.3	Lower Marker
2	48	1,061.36	33,347.7	
3	57	207.99	5,570.5	
4	68	99.20	2,209.1	
5	82	171.29	3,150.7	
6	99	58.09	888.2	
7	111	32.00	438.0	
8	125	42.30	511.7	
9	143	62.88	668.2	
10	163	54.40	504.7	
11	186	96.65	788.6	
12	213	104.79	746.1	
13	223	39.51	269.0	
14	247	89.53	549.1	
15	260	72.78	423.9	
16	273	52.69	292.7	
17	280	44.35	240.4	
18	299	44.28	224.4	
19	312	53.64	260.4	
20	327	80.96	375.5	
21	354	91.90	392.8	
22	366	50.77	209.9	
23	381	70.32	279.7	
24	394	72.23	278.0	
25	413	145.48	533.2	
26	441	48.07	165.1	

Assay Class: High Sensitivity DNA Assay
 Data Path: C:\...ents and Settings\Bioanalyzer\2012-07-10\2012-07-10_008.xad

Created: 7/10/2012 4:30:18 PM
 Modified: 7/10/2012 5:14:30 PM

Electropherogram Summary Continued ...

... Peak table for sample 10 : B39 Soni 9+4Cycles 1:2

Peak	Size [bp]	Conc. [pg/µl]	Molarity [pmol/l]	Observations
27	476	54.81	174.4	
28	491	56.21	173.6	
29	514	57.06	168.3	
30	548	88.71	245.2	
31	567	76.38	204.1	
32	608	152.16	378.9	
33	663	66.52	152.0	
34	699	73.66	159.7	
35	791	93.81	179.7	
36	830	53.34	97.4	
37	932	248.98	404.8	
38	1,697	130.67	116.6	
39	2,550	28.26	16.8	
40	3,796	48.00	19.2	
41	5,559	15.95	4.3	
42	6,969	10.90	2.4	
43	10,380	75.00	10.9	Upper Marker
44	12,643	0.00	0.0	
45	14,654	0.00	0.0	
46	18,527	0.00	0.0	
47	19,029	0.00	0.0	
48	20,991	0.00	0.0	
49	23,153	0.00	0.0	
50	23,907	0.00	0.0	
51	25,315	0.00	0.0	
52	26,271	0.00	0.0	

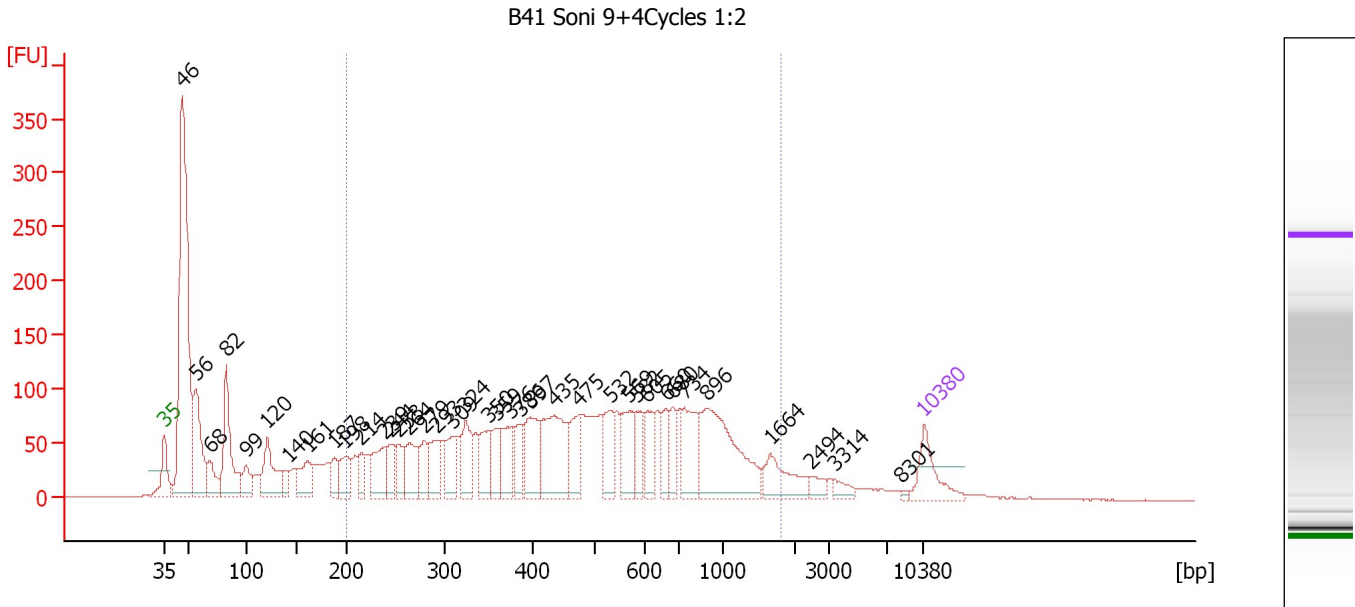
Region table for sample 10 : B39 Soni 9+4Cycles 1:2

From [bp]	To [bp]	Average Size [bp]	Molarity [pmol/l]	Conc. [pg/µl]	Corr. Area	% of Total	Size distribution in CV [%]	Color
200	2,003	664	8,558.6	2,489.95	3,010.2	60	61.3	■

Assay Class: High Sensitivity DNA Assay
 Data Path: C:\...ents and Settings\Bioanalyzer\2012-07-10\2012-07-10_008.xad

Created: 7/10/2012 4:30:18 PM
 Modified: 7/10/2012 5:14:30 PM

Electropherogram Summary Continued ...



Overall Results for sample 11 : B41 Soni 9+4Cycles 1:2

Number of peaks found: 38 Corr. Area 1: 3,148.8
 Noise: 0.5

Peak table for sample 11 : B41 Soni 9+4Cycles 1:2

Peak	Size [bp]	Conc. [pg/μl]	Molarity [pmol/l]	Observations
1	35	125.00	5,411.3	Lower Marker
2	46	1,093.64	36,071.1	
3	56	276.18	7,494.5	
4	68	97.43	2,174.7	
5	82	280.86	5,199.4	
6	99	75.26	1,155.3	
7	120	171.64	2,168.5	
8	140	42.99	464.5	
9	161	108.19	1,021.0	
10	187	63.37	513.2	
11	198	87.93	673.6	
12	214	55.03	388.8	
13	239	114.96	728.3	
14	244	65.70	408.3	
15	253	68.59	410.8	
16	264	112.55	646.2	
17	279	68.49	372.2	
18	293	99.24	513.8	
19	309	87.52	429.0	
20	324	117.17	548.4	
21	350	106.94	463.1	
22	359	75.56	318.6	
23	376	106.49	429.2	
24	386	80.19	314.6	
25	397	143.33	547.1	
26	435	245.86	857.1	

Assay Class: High Sensitivity DNA Assay
 Data Path: C:\...ents and Settings\Bioanalyzer\2012-07-10\2012-07-10_008.xad

Created: 7/10/2012 4:30:18 PM
 Modified: 7/10/2012 5:14:30 PM

Electropherogram Summary Continued ...

... Peak table for sample 11 : B41 Soni 9+4Cycles 1:2

Peak	Size [bp]	Conc. [pg/μl]	Molarity [pmol/l]	Observations
27	475	104.75	333.9	
28	532	99.91	284.5	
29	569	122.03	325.0	
30	582	62.35	162.2	
31	605	78.11	195.5	
32	660	66.89	153.4	
33	680	58.65	130.7	
34	734	134.50	277.6	
35	896	311.03	525.9	
36	1,664	92.00	83.7	
37	2,494	23.84	14.5	
38	3,314	22.88	10.5	
39	8,301	4.64	0.8	
40	▶ 10,380	75.00	10.9	Upper Marker

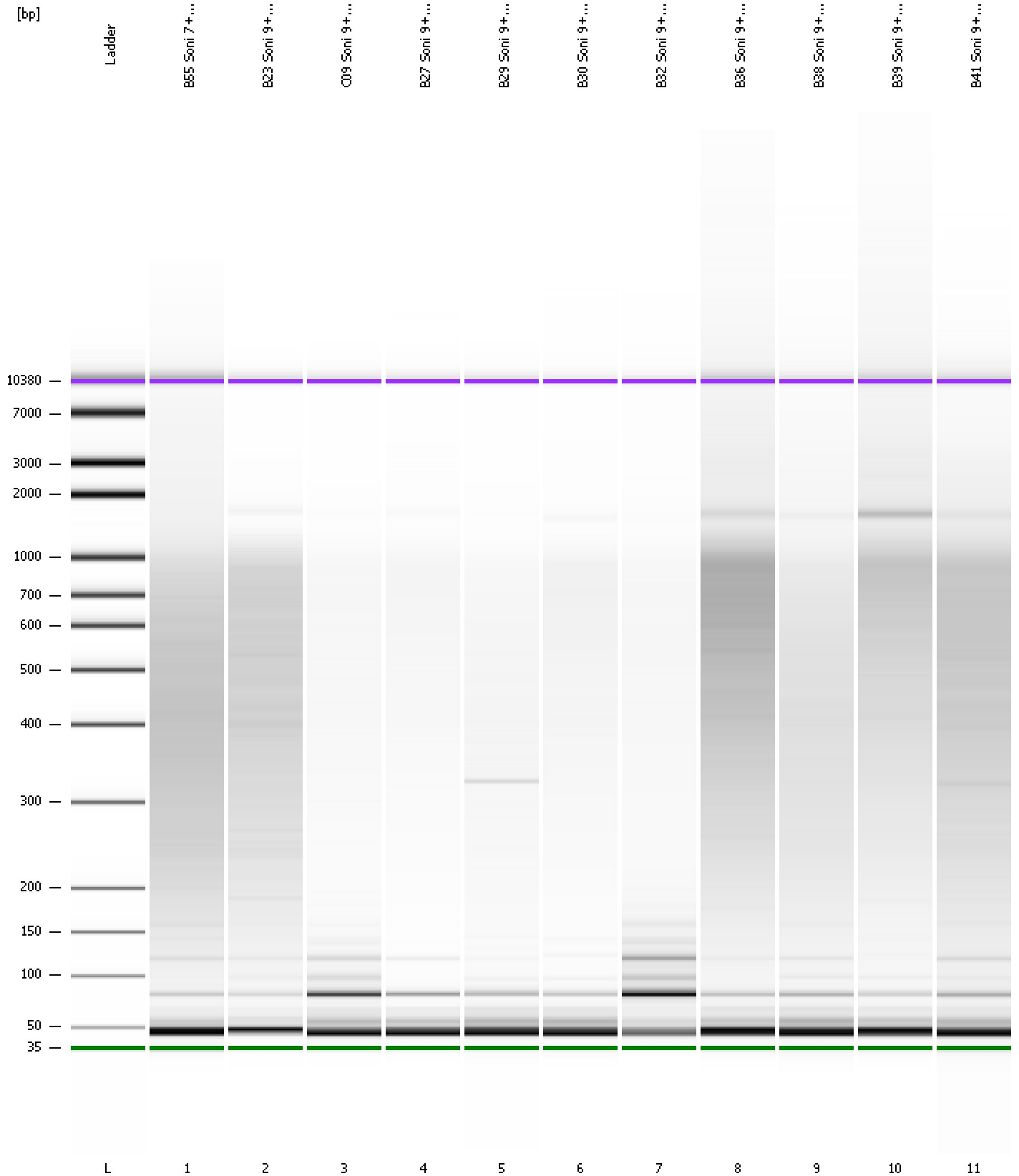
Region table for sample 11 : B41 Soni 9+4Cycles 1:2

From [bp]	To [bp]	Average Size [bp]	Molarity [pmol/l]	Conc. [pg/μl]	Corr. Area	% of Total	Size distribution in CV [%]	Color
200	1,807	560	12,177.1	3,230.55	3,148.8	62	56.0	■

Assay Class: High Sensitivity DNA Assay
Data Path: C:\...ents and Settings\Bioanalyzer\2012-07-10\2012-07-10_008.xad

Created: 7/10/2012 4:30:18 PM
Modified: 7/10/2012 5:14:30 PM

Gel Image



Assay Class: High Sensitivity DNA Assay
 Data Path: C:\...ents and Settings\Bioanalyzer\2012-07-10\2012-07-10_008.xad

Created: 7/10/2012 4:30:18 PM
 Modified: 7/10/2012 5:14:30 PM

Run Logbook

Description	Number	Source	Category	Sub Category	Time	Time Zone	User	Host
Run ended on port 1 (Number of wells acquired: 12)		Instrument	Run		7/10/2012 5:11:38 PM	(GMT --07:00) Pacific Standard Time	UC Davis	D8XSMGH1
Run started on port 1 (File: C:\Documents and Settings\Bioanalyzer\2012-07-10\2012-07-10_008.xad)		Instrument	Run		7/10/2012 4:30:23 PM	(GMT --07:00) Pacific Standard Time	UC Davis	D8XSMGH1
Product Number : G2938B		Instrument	Run		7/10/2012 4:30:23 PM	(GMT --07:00) Pacific Standard Time	UC Davis	D8XSMGH1
Name :		Instrument	Run		7/10/2012 4:30:23 PM	(GMT --07:00) Pacific Standard Time	UC Davis	D8XSMGH1
Vendor : Agilent Technologies		Instrument	Run		7/10/2012 4:30:23 PM	(GMT --07:00) Pacific Standard Time	UC Davis	D8XSMGH1
Serial# : DE13701086		Instrument	Run		7/10/2012 4:30:23 PM	(GMT --07:00) Pacific Standard Time	UC Davis	D8XSMGH1
Firmware : C.01.069		Instrument	Run		7/10/2012 4:30:23 PM	(GMT --07:00) Pacific Standard Time	UC Davis	D8XSMGH1
Cartridge : Electrode		Instrument	Run		7/10/2012 4:30:23 PM	(GMT --07:00) Pacific Standard Time	UC Davis	D8XSMGH1