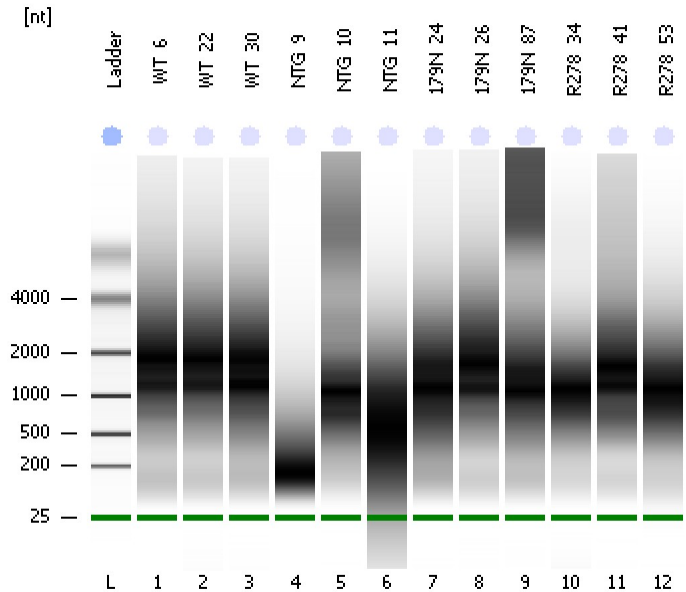


Assay Class: Eukaryote Total RNA Nano
Data Path: C:\...ents and Settings\Bioanalyzer\2012-07-11\2012-07-11_001.xad

Created: 7/11/2012 9:24:51 AM
Modified: 7/11/2012 9:50:30 AM

Electrophoresis File Run Summary



Instrument Information:

Instrument Name: DE13701086 Firmware: C.01.069
Serial#: DE13701086 Type: G2938B

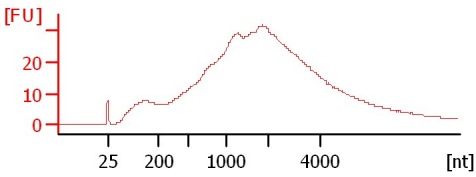
Assay Information:

Assay Origin Path: C:\Program Files\Agilent\2100 bioanalyzer\2100 expert\assays\RNA\Eukaryote Total RNA Nano Series II.xsy
Assay Class: Eukaryote Total RNA Nano
Version: 2.6
Assay Comments: Total RNA Analysis ng sensitivity (Eukaryote)
© Copyright 2003 - 2009 Agilent Technologies, Inc.

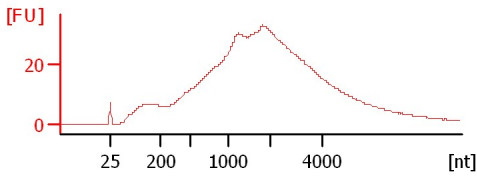
Chip Information:

Chip Lot #:
Reagent Kit Lot #:
Chip Comments:

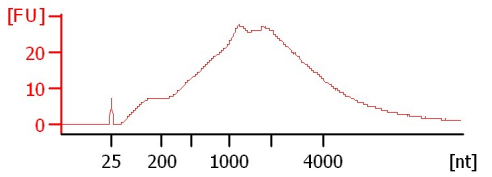
WT_6
RIN: 3.50



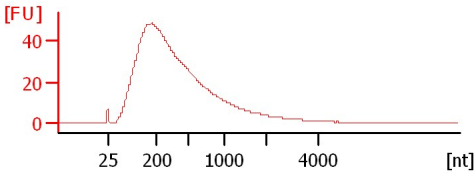
WT_22
RIN: 3.10



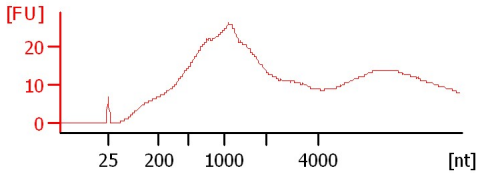
WT_30
RIN: 2.80



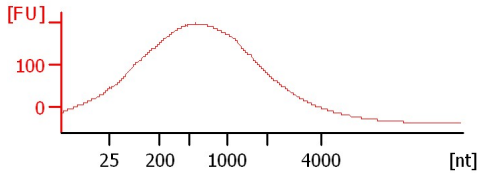
NTG_9
RIN: 1.90



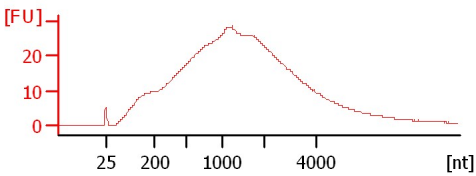
NTG_10
RIN: 9.80



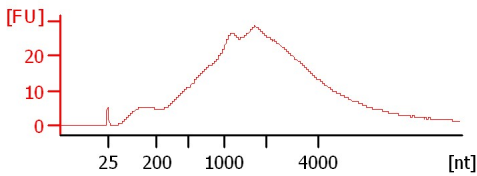
NTG_11
RIN: 1.70



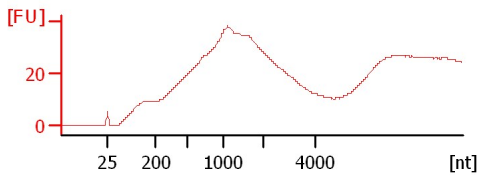
179N_24
RIN: 3.30



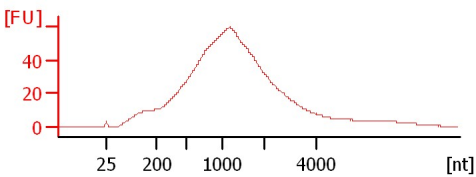
179N_26
RIN: 3.60



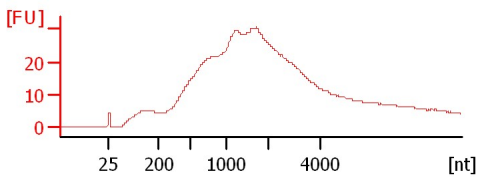
179N_87
RIN: 2.60



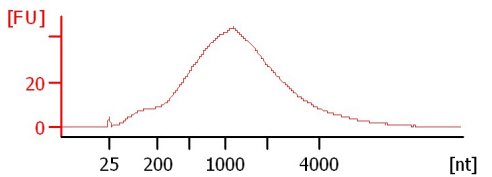
R278_34
RIN: 1.10



R278_41
RIN: 2.80



R278_53
RIN: 10



Assay Class: Eukaryote Total RNA Nano
Data Path: C:\...ents and Settings\Bioanalyzer\2012-07-11\2012-07-11_001.xad

Created: 7/11/2012 9:24:51 AM
Modified: 7/11/2012 9:50:30 AM

Electrophoresis File Run Summary (Chip Summary)

Sample Name	Sample Comment	Status	Result Label	Result Color
WT_6		✓	RIN: 3.50	
WT_22		✓	RIN: 3.10	
WT_30		✓	RIN: 2.80	
NTG_9		✓	RIN: 1.90	
NTG_10		✓	RIN: 9.80	
NTG_11		✓	RIN: 1.70	
179N_24		✓	RIN: 3.30	
179N_26		✓	RIN: 3.60	
179N_87		✓	RIN: 2.60	
R278_34		✓	RIN: 1.10	
R278_41		✓	RIN: 2.80	
R278_53		✓	RIN:10	
Ladder		✓	All Other Samples	

Chip Lot #

Reagent Kit Lot #

Chip Comments :

Assay Class: Eukaryote Total RNA Nano
Data Path: C:\...ents and Settings\Bioanalyzer\2012-07-11\2012-07-11_001.xad

Created: 7/11/2012 9:24:51 AM
Modified: 7/11/2012 9:50:30 AM

Electrophoresis Assay Details

General Analysis Settings

Number of Available Sample and Ladder Wells (Max.) : 13
Minimum Visible Range [s] : 17
Maximum Visible Range [s] : 70
Start Analysis Time Range [s] : 19
End Analysis Time Range [s] : 69
Ladder Concentration [ng/μl] : 150
Lower Marker Concentration [ng/μl] : 0
Upper Marker Concentration [ng/μl] : 0
Used Lower Marker for Quantitation
Standard Curve Fit is Logarithmic
Show Data Aligned to Lower Marker

Integrator Settings

Integration Start Time [s] : 19
Integration End Time [s] : 69
Slope Threshold : 0.6
Height Threshold [FU] : 0.5
Area Threshold : 0.2
Width Threshold [s] : 0.5
Baseline Plateau [s] : 6

Filter Settings

Filter Width [s] : 0.5
Polynomial Order : 4

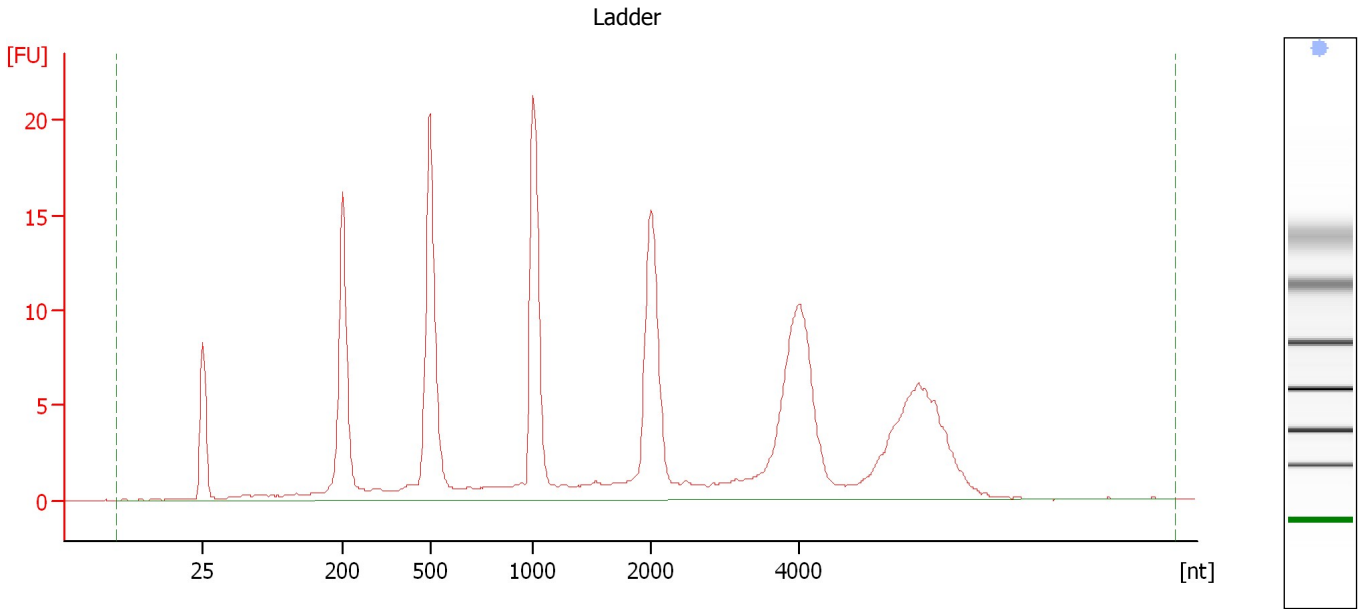
Ladder

Ladder Peak	Size
1	25
2	200
3	500
4	1000
5	2000
6	4000

Assay Class: Eukaryote Total RNA Nano
Data Path: C:\...ents and Settings\Bioanalyzer\2012-07-11\2012-07-11_001.xad

Created: 7/11/2012 9:24:51 AM
Modified: 7/11/2012 9:50:30 AM

Electropherogram Summary



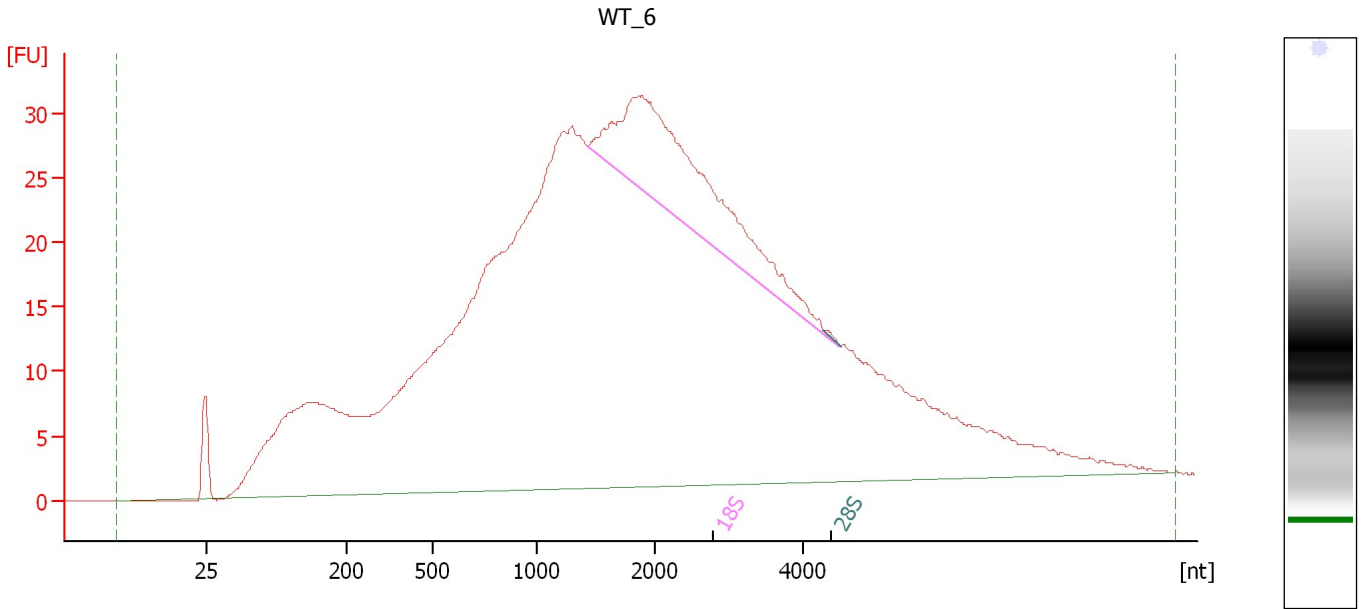
Overall Results for Ladder

RNA Area:	206.1	Result Flagging Color:	
RNA Concentration:	150 ng/ μ l	Result Flagging Label:	All Other Samples

Assay Class: Eukaryote Total RNA Nano
Data Path: C:\...ents and Settings\Bioanalyzer\2012-07-11\2012-07-11_001.xad

Created: 7/11/2012 9:24:51 AM
Modified: 7/11/2012 9:50:30 AM

Electropherogram Summary Continued ...



Overall Results for sample 1 : WT_6

RNA Area:	1,223.3	RNA Integrity Number (RIN):	3.5 (B.02.08)
RNA Concentration:	890 ng/μl	Result Flagging Color:	
rRNA Ratio [28s / 18s]:	0.0	Result Flagging Label:	RIN: 3.50

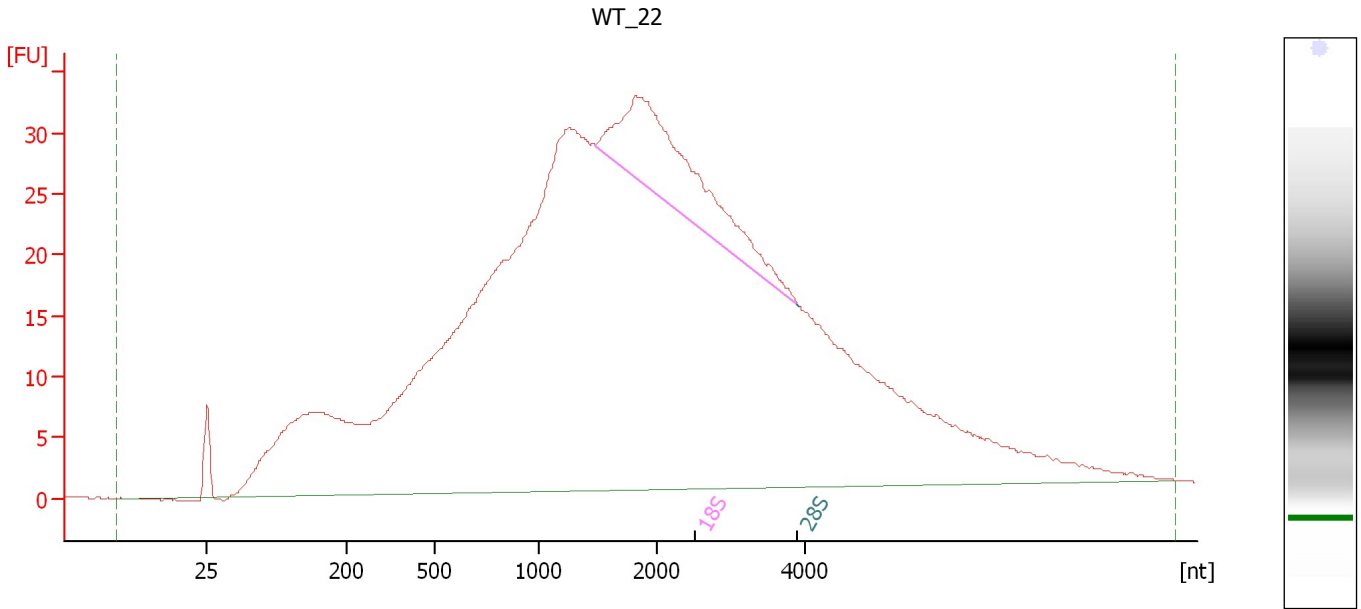
Fragment table for sample 1 : WT_6

Name	Start Size [nt]	End Size [nt]	Area	% of total Area
18S	1,422	4,485	89.8	7.3
28S	4,514	4,254	0.0	0.0

Assay Class: Eukaryote Total RNA Nano
Data Path: C:\...ents and Settings\Bioanalyzer\2012-07-11\2012-07-11_001.xad

Created: 7/11/2012 9:24:51 AM
Modified: 7/11/2012 9:50:30 AM

Electropherogram Summary Continued ...



Overall Results for sample 2 : WT_22

RNA Area:	1,263.0	RNA Integrity Number (RIN):	3.1 (B.02.08)
RNA Concentration:	919 ng/μl	Result Flagging Color:	
rRNA Ratio [28s / 18s]:	0.0	Result Flagging Label:	RIN: 3.10

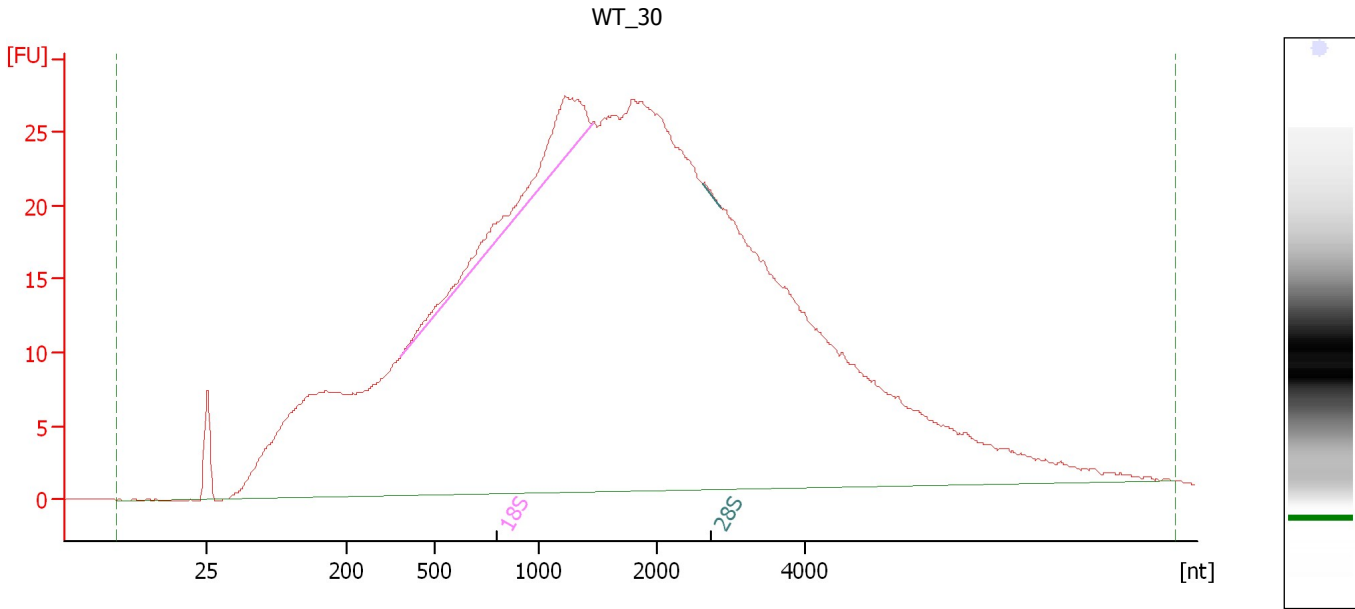
Fragment table for sample 2 : WT_22

Name	Start Size [nt]	End Size [nt]	Area	% of total Area
18S	1,479	3,891	69.2	5.5
28S	3,920	3,891	0.0	0.0

Assay Class: Eukaryote Total RNA Nano
 Data Path: C:\...ents and Settings\Bioanalyzer\2012-07-11\2012-07-11_001.xad

Created: 7/11/2012 9:24:51 AM
 Modified: 7/11/2012 9:50:30 AM

Electropherogram Summary Continued ...



Overall Results for sample 3 : WT_30

RNA Area:	1,151.5	RNA Integrity Number (RIN):	2.8 (B.02.08)
RNA Concentration:	838 ng/μl	Result Flagging Color:	
rRNA Ratio [28s / 18s]:	0.0	Result Flagging Label:	RIN: 2.80

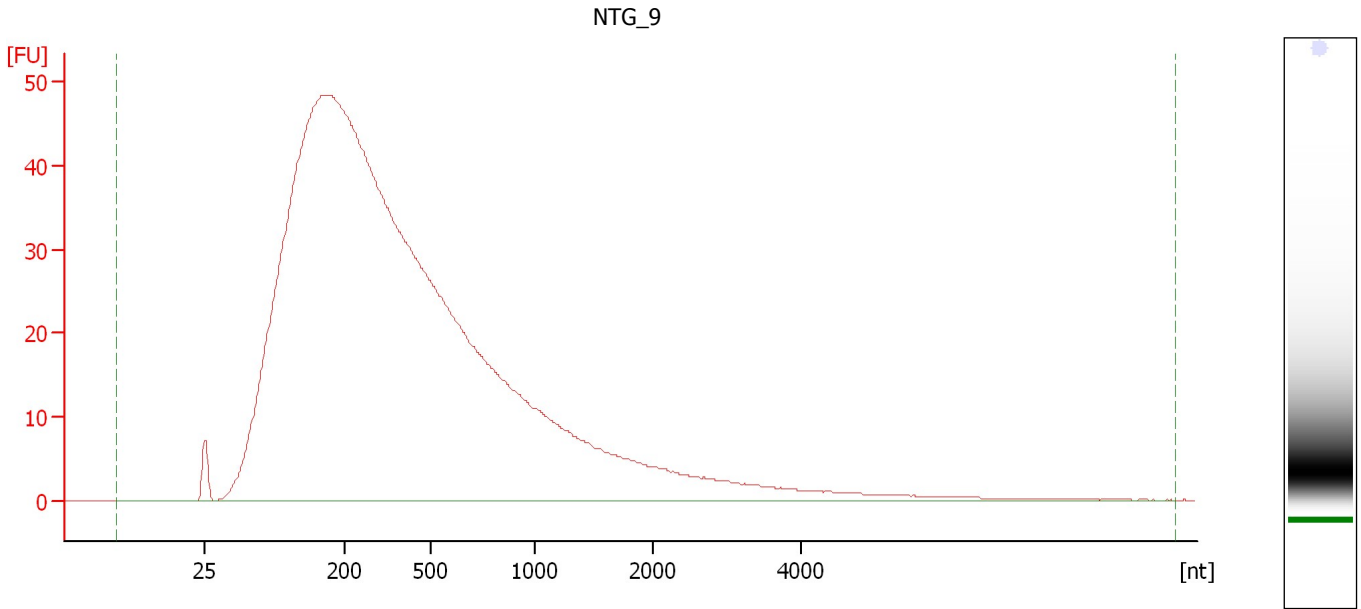
Fragment table for sample 3 : WT_30

Name	Start Size [nt]	End Size [nt]	Area	% of total Area
18S	384	1,451	28.1	2.4
28S	2,624	2,868	0.2	0.0

Assay Class: Eukaryote Total RNA Nano
Data Path: C:\...ents and Settings\Bioanalyzer\2012-07-11\2012-07-11_001.xad

Created: 7/11/2012 9:24:51 AM
Modified: 7/11/2012 9:50:30 AM

Electropherogram Summary Continued ...



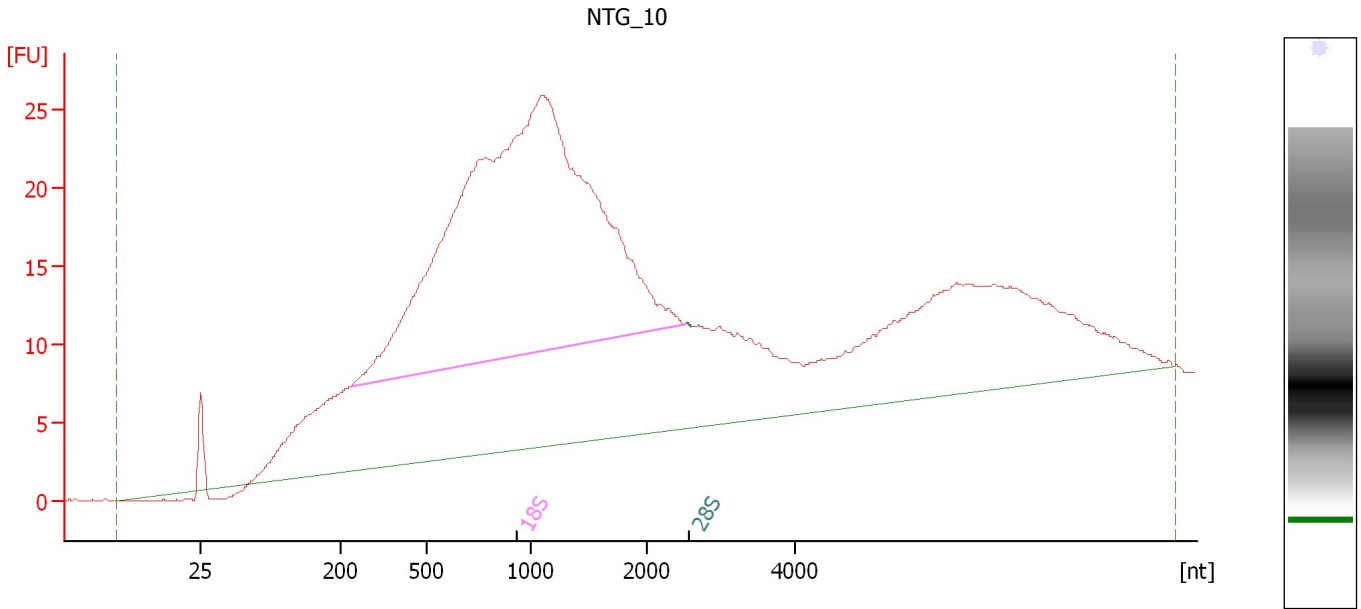
Overall Results for sample 4 : NTG_9

RNA Area:	1,390.9	RNA Integrity Number (RIN):	1.9 (B.02.08)
RNA Concentration:	1,012 ng/μl	Result Flagging Color:	
rRNA Ratio [28s / 18s]:	0.0	Result Flagging Label:	RIN: 1.90

Assay Class: Eukaryote Total RNA Nano
 Data Path: C:\...ents and Settings\Bioanalyzer\2012-07-11\2012-07-11_001.xad

Created: 7/11/2012 9:24:51 AM
 Modified: 7/11/2012 9:50:30 AM

Electropherogram Summary Continued ...



Overall Results for sample 5 : NTG_10

RNA Area:	809.8	RNA Integrity Number (RIN):	9.8 (B.02.08, Anomaly Threshold(s) manually adapted)
RNA Concentration:	589 ng/μl	Result Flagging Color:	
rRNA Ratio [28s / 18s]:	0.0	Result Flagging Label:	RIN: 9.80

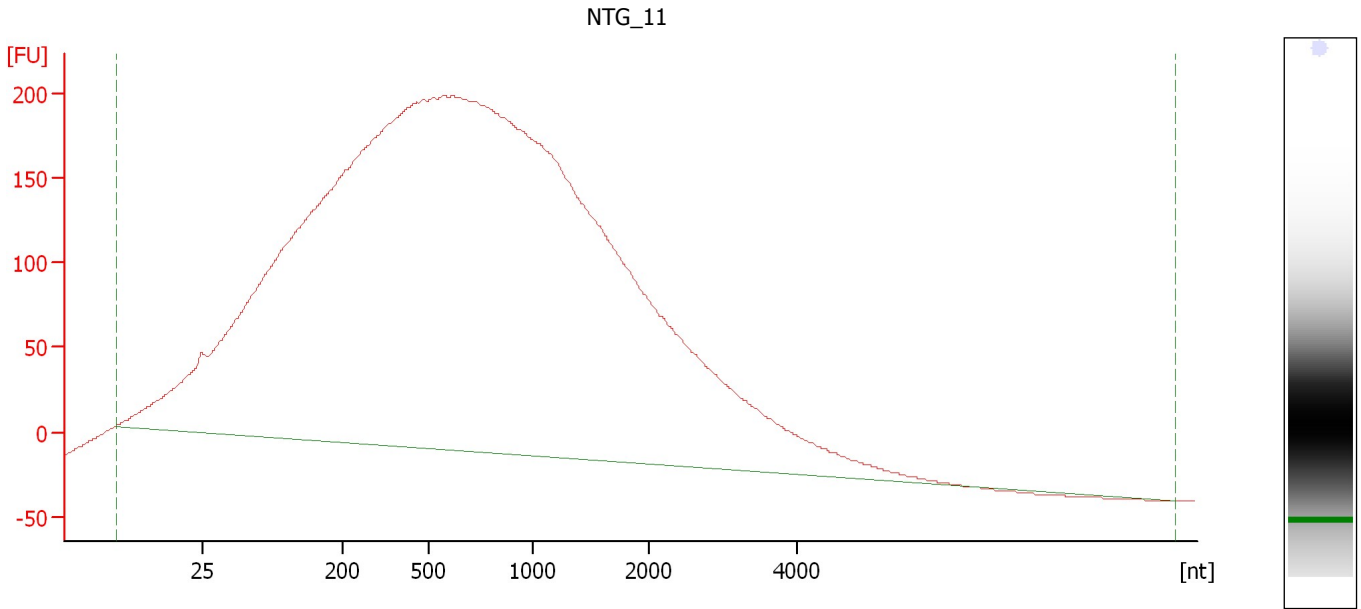
Fragment table for sample 5 : NTG_10

Name	Start Size [nt]	End Size [nt]	Area	% of total Area
18S	231	2,520	321.0	39.6
28S	2,549	2,608	0.0	0.0

Assay Class: Eukaryote Total RNA Nano
Data Path: C:\...ents and Settings\Bioanalyzer\2012-07-11\2012-07-11_001.xad

Created: 7/11/2012 9:24:51 AM
Modified: 7/11/2012 9:50:30 AM

Electropherogram Summary Continued ...



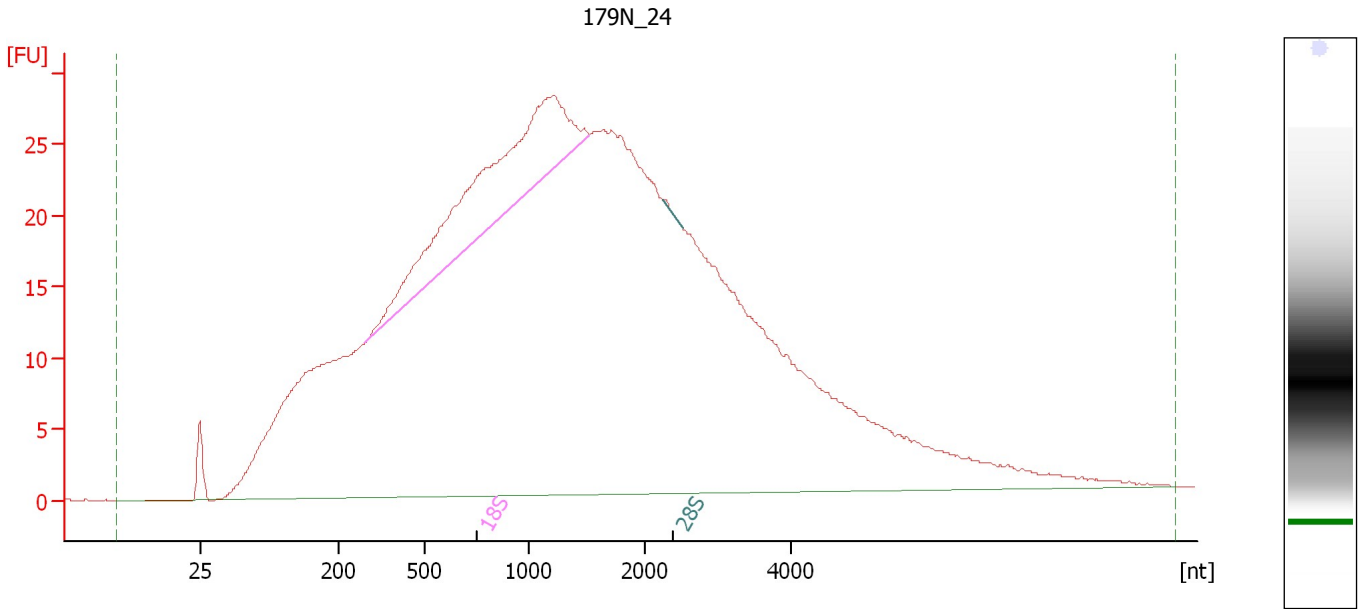
Overall Results for sample 6 : NTG_11

RNA Area:	10,185.5	RNA Integrity Number (RIN):	1.7 (B.02.08, Anomaly Threshold(s) manually adapted)
RNA Concentration:	7,412 ng/ μ l	Result Flagging Color:	
rRNA Ratio [28s / 18s]:	0.0	Result Flagging Label:	RIN: 1.70

Assay Class: Eukaryote Total RNA Nano
Data Path: C:\...ents and Settings\Bioanalyzer\2012-07-11\2012-07-11_001.xad

Created: 7/11/2012 9:24:51 AM
Modified: 7/11/2012 9:50:30 AM

Electropherogram Summary Continued ...



Overall Results for sample 7 : 179N_24

RNA Area:	1,214.5	RNA Integrity Number (RIN):	3.3 (B.02.08)
RNA Concentration:	884 ng/μl	Result Flagging Color:	
rRNA Ratio [28s / 18s]:	0.0	Result Flagging Label:	RIN: 3.30

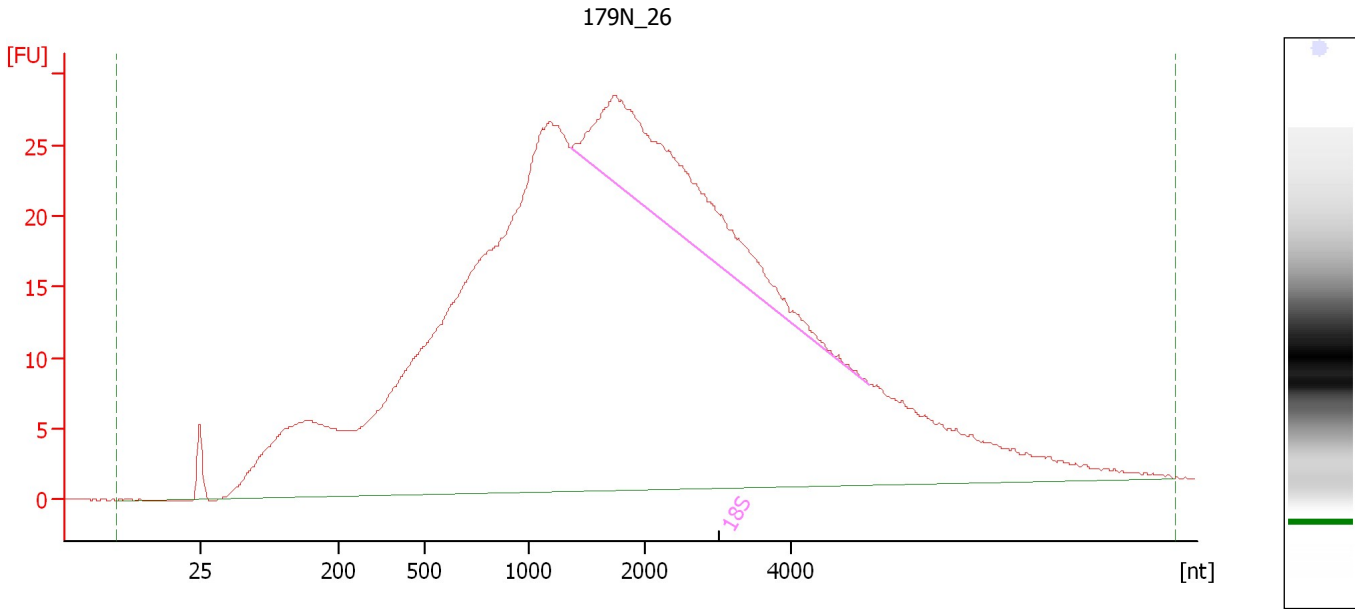
Fragment table for sample 7 : 179N_24

Name	Start Size [nt]	End Size [nt]	Area	% of total Area
18S	288	1,521	86.6	7.1
28S	2,243	2,505	0.2	0.0

Assay Class: Eukaryote Total RNA Nano
Data Path: C:\...ents and Settings\Bioanalyzer\2012-07-11\2012-07-11_001.xad

Created: 7/11/2012 9:24:51 AM
Modified: 7/11/2012 9:50:30 AM

Electropherogram Summary Continued ...



Overall Results for sample 8 : 179N_26

RNA Area:	1,109.2	RNA Integrity Number (RIN):	3.6 (B.02.08)
RNA Concentration:	807 ng/μl	Result Flagging Color:	
rRNA Ratio [28s / 18s]:	0.0	Result Flagging Label:	RIN: 3.60

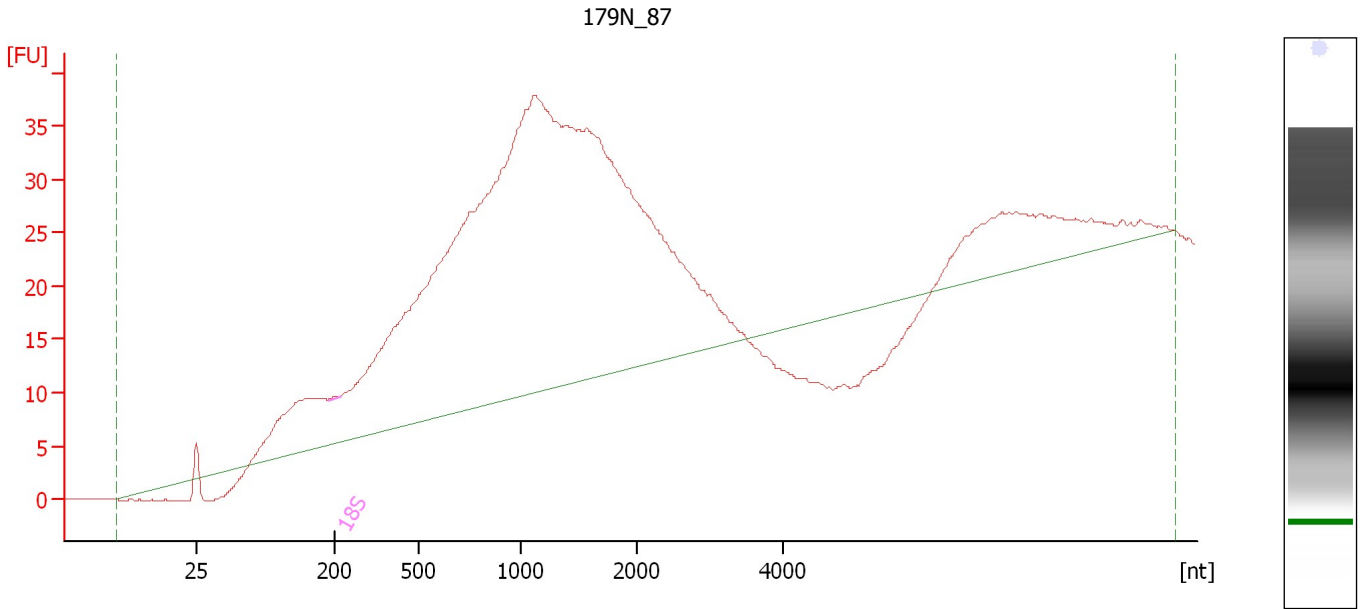
Fragment table for sample 8 : 179N_26

Name	Start Size [nt]	End Size [nt]	Area	% of total Area
18S	1,356	5,043	88.1	7.9

Assay Class: Eukaryote Total RNA Nano
Data Path: C:\...ents and Settings\Bioanalyzer\2012-07-11\2012-07-11_001.xad

Created: 7/11/2012 9:24:51 AM
Modified: 7/11/2012 9:50:30 AM

Electropherogram Summary Continued ...



Overall Results for sample 9 : 179N_87

RNA Area:	830.6	RNA Integrity Number (RIN):	2.6 (B.02.08, Anomaly Threshold(s) manually adapted)
RNA Concentration:	604 ng/μl	Result Flagging Color:	
rRNA Ratio [28s / 18s]:	0.0	Result Flagging Label:	RIN: 2.60

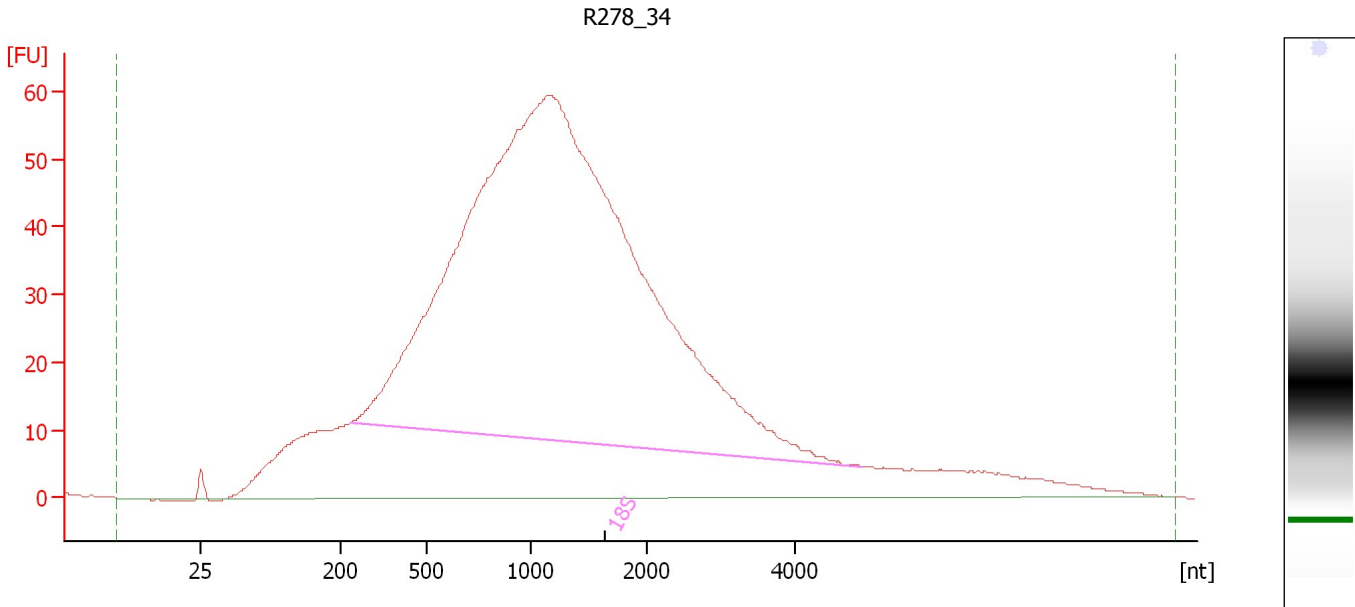
Fragment table for sample 9 : 179N_87

Name	Start Size [nt]	End Size [nt]	Area	% of total Area
18S	226	192	0.0	0.0

Assay Class: Eukaryote Total RNA Nano
 Data Path: C:\...ents and Settings\Bioanalyzer\2012-07-11\2012-07-11_001.xad

Created: 7/11/2012 9:24:51 AM
 Modified: 7/11/2012 9:50:30 AM

Electropherogram Summary Continued ...



Setpoint Deviations for sample 10 : R278_34

Width Threshold [s] : 0.01

Overall Results for sample 10 : R278_34

RNA Area:	1,907.6	RNA Integrity Number (RIN):	1.1 (B.02.08, Anomaly Threshold(s) manually adapted)
RNA Concentration:	1,388 ng/μl	Result Flagging Color:	
rRNA Ratio [28s / 18s]:	0.0	Result Flagging Label:	RIN: 1.10

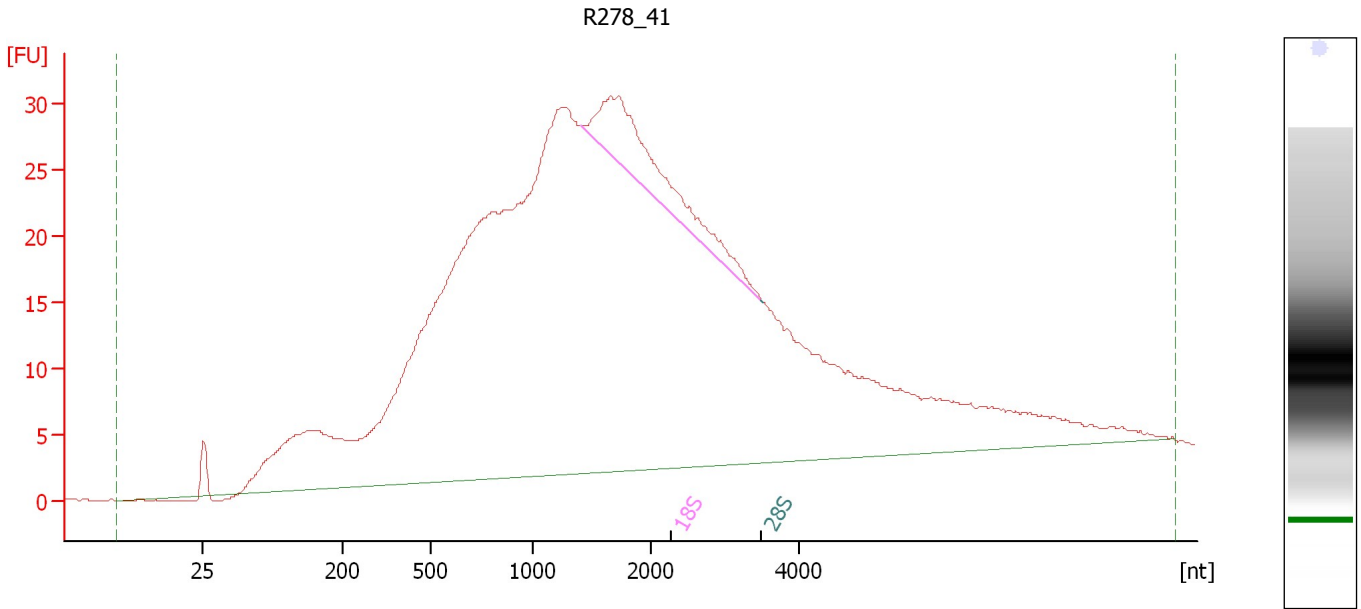
Fragment table for sample 10 : R278_34

Name	Start Size [nt]	End Size [nt]	Area	% of total Area
18S	231	4,907	1,236.9	64.8

Assay Class: Eukaryote Total RNA Nano
 Data Path: C:\...ents and Settings\Bioanalyzer\2012-07-11\2012-07-11_001.xad

Created: 7/11/2012 9:24:51 AM
 Modified: 7/11/2012 9:50:30 AM

Electropherogram Summary Continued ...



Overall Results for sample 11 : R278_41

RNA Area:	1,065.5	RNA Integrity Number (RIN):	2.8 (B.02.08, Anomaly Threshold(s) manually adapted)
RNA Concentration:	775 ng/μl	Result Flagging Color:	
rRNA Ratio [28s / 18s]:	0.0	Result Flagging Label:	RIN: 2.80

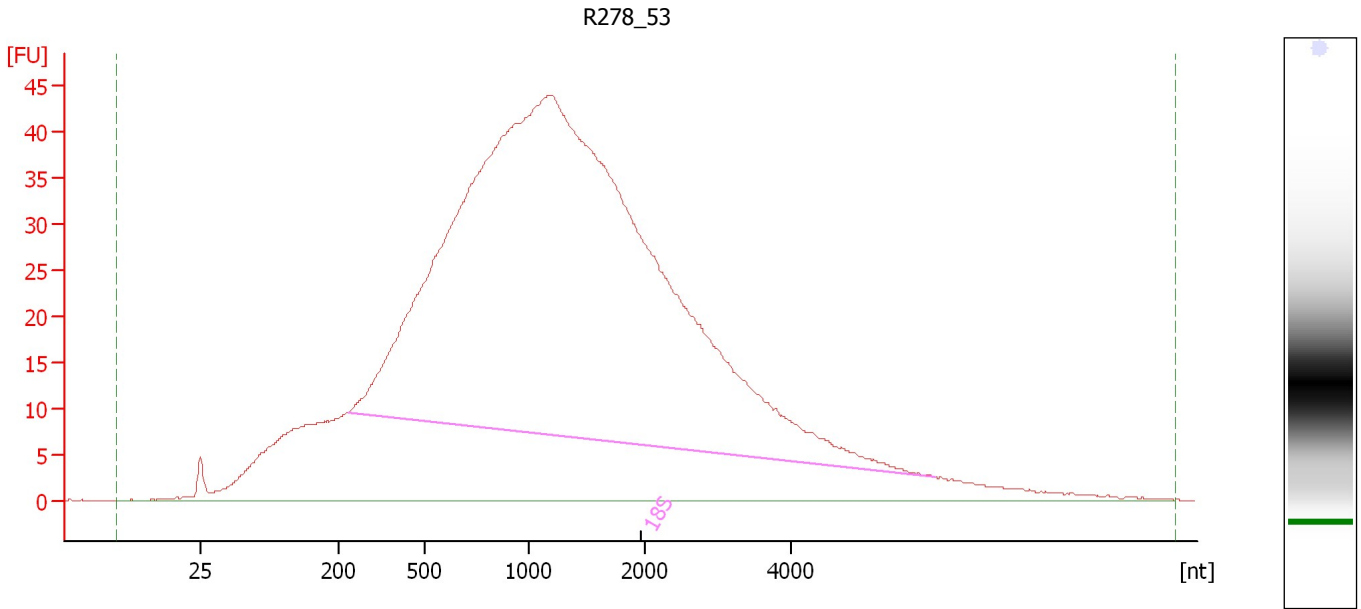
Fragment table for sample 11 : R278_41

Name	Start Size [nt]	End Size [nt]	Area	% of total Area
18S	1,400	3,492	40.3	3.8
28S	3,521	3,492	0.0	0.0

Assay Class: Eukaryote Total RNA Nano
Data Path: C:\...ents and Settings\Bioanalyzer\2012-07-11\2012-07-11_001.xad

Created: 7/11/2012 9:24:51 AM
Modified: 7/11/2012 9:50:30 AM

Electropherogram Summary Continued ...



Overall Results for sample 12 : R278_53

RNA Area:	1,586.2	RNA Integrity Number (RIN):	10 (B.02.08, Anomaly Threshold(s) manually adapted)
RNA Concentration:	1,154 ng/μl	Result Flagging Color:	
rRNA Ratio [28s / 18s]:	0.0	Result Flagging Label:	RIN:10

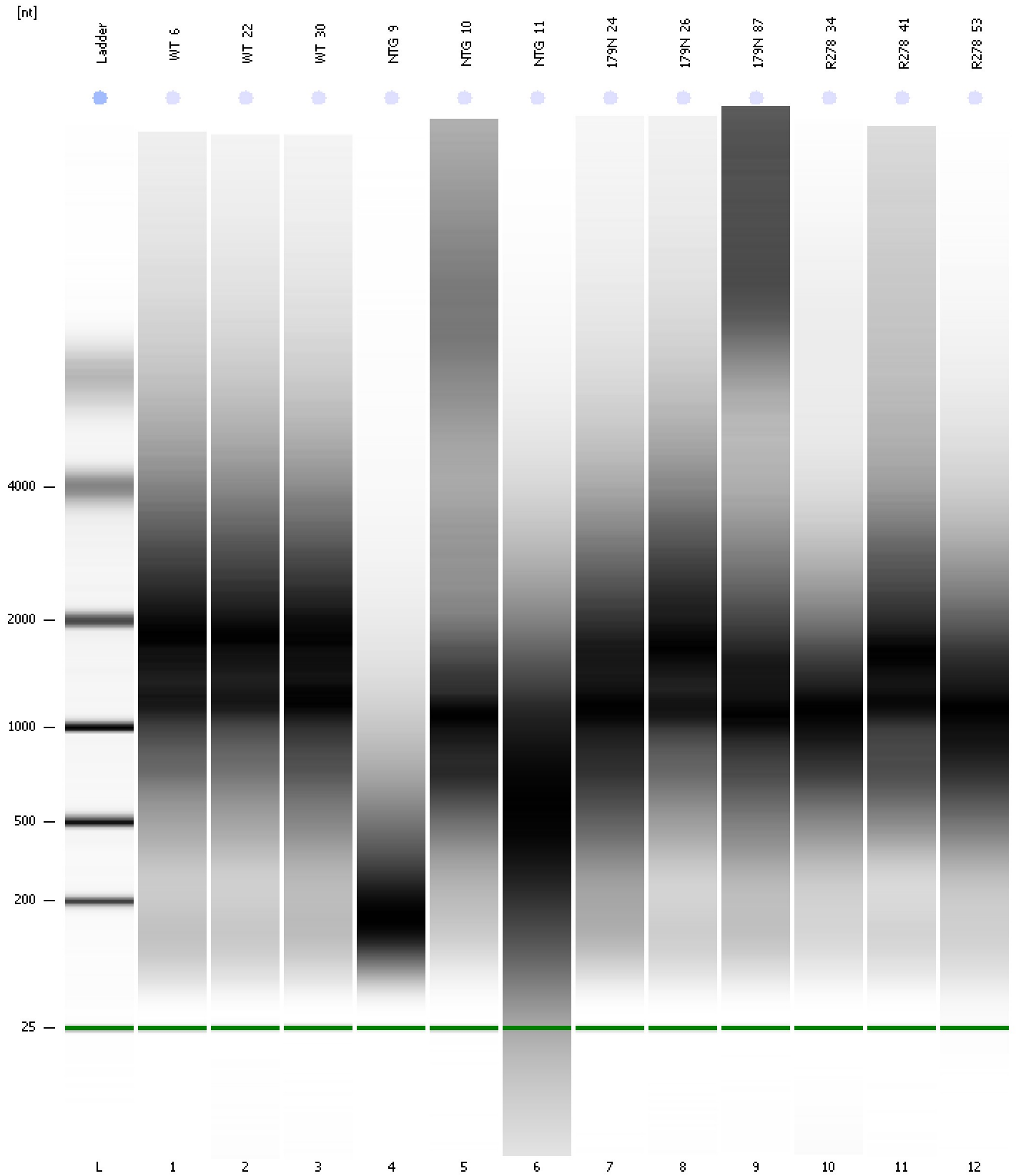
Fragment table for sample 12 : R278_53

Name	Start Size [nt]	End Size [nt]	Area	% of total Area
18S	230	5,962	1,025.5	64.7

Assay Class: Eukaryote Total RNA Nano
Data Path: C:\...ents and Settings\Bioanalyzer\2012-07-11\2012-07-11_001.xad

Created: 7/11/2012 9:24:51 AM
Modified: 7/11/2012 9:50:30 AM

Gel Image



Assay Class: Eukaryote Total RNA Nano
 Data Path: C:\...ents and Settings\Bioanalyzer\2012-07-11\2012-07-11_001.xad

Created: 7/11/2012 9:24:51 AM
 Modified: 7/11/2012 9:50:30 AM

Run Logbook

Description	Number	Source	Category	Sub Category	Time	Time Zone	User	Host
Run ended on port 1 (Number of wells acquired: 13)		Instrument	Run		7/11/2012 9:48:40 AM	(GMT --07:00) Pacific Standard Time	UC Davis	D8XSMGH1
Run started on port 1 (File: C:\Documents and Settings\Bioanalyzer\2012-07-11\2012-07-11_001.xad)		Instrument	Run		7/11/2012 9:24:56 AM	(GMT --07:00) Pacific Standard Time	UC Davis	D8XSMGH1
Product Number : G2938B		Instrument	Run		7/11/2012 9:24:56 AM	(GMT --07:00) Pacific Standard Time	UC Davis	D8XSMGH1
Name :		Instrument	Run		7/11/2012 9:24:56 AM	(GMT --07:00) Pacific Standard Time	UC Davis	D8XSMGH1
Vendor : Agilent Technologies		Instrument	Run		7/11/2012 9:24:56 AM	(GMT --07:00) Pacific Standard Time	UC Davis	D8XSMGH1
Serial# : DE13701086		Instrument	Run		7/11/2012 9:24:56 AM	(GMT --07:00) Pacific Standard Time	UC Davis	D8XSMGH1
Firmware : C.01.069		Instrument	Run		7/11/2012 9:24:56 AM	(GMT --07:00) Pacific Standard Time	UC Davis	D8XSMGH1
Cartridge : Electrode		Instrument	Run		7/11/2012 9:24:56 AM	(GMT --07:00) Pacific Standard Time	UC Davis	D8XSMGH1